

# WHO WILL YOU TALK TO FIRST? GET READY TO ASK YOUR QUESTIONS.

## UNIVERSITIES & COLLEGES

| Exhibiting as . . .                 | Stand Number |
|-------------------------------------|--------------|
| University of Aberdeen              | 12           |
| Abertay University                  | 20           |
| Anglia Ruskin University (ARU)      | 8            |
| Arts University Bournemouth         | 53           |
| Aston University, Birmingham        | 22           |
| Bangor University                   | 70           |
| University of Bath                  | 25           |
| Bath Spa University                 | 56           |
| University of Birmingham            | 78           |
| Bishop Grosseteste University       | 71           |
| Bournemouth University              | 49           |
| University of Brighton              | 66           |
| University Of Bristol               | 41           |
| Brunel University of London         | 13           |
| The University of Buckingham        | 87           |
| Buckinghamshire New University      | 9            |
| University of Cambridge             | 19           |
| Canterbury Christ Church University | 60           |

|                                   |     |
|-----------------------------------|-----|
| Cardiff University                | 85  |
| Cardiff Metropolitan University   | 94  |
| University of Chester             | 75  |
| University of Chichester          | 1   |
| McTimoney College of Chiropractic | 3   |
| Coventry University               | 67  |
| University for the Creative Arts  | 62  |
| De Montfort University, Leicester | 99  |
| University of Derby               | 26  |
| Durham University                 | 16  |
| University of East Anglia (UEA)   | 100 |



|                                 |    |
|---------------------------------|----|
| Edge Hill University            | 50 |
| University of Essex             | 40 |
| University of Exeter            | 18 |
| Falmouth University             | 65 |
| The University of Glasgow       | 59 |
| Goldsmiths University of London | 34 |
| Harper Adams University         | 6  |
| Health Sciences University      | 17 |
| Hereford College of Arts        | 10 |
| University of Hertfordshire     | 64 |
| University of Kent              | 29 |
| Lancaster University            | 79 |
| The University of Law           | 95 |
| University of Leeds             | 80 |
| Leeds Beckett University        | 38 |
| Leeds Trinity University        | 36 |
| University of Leicester         | 11 |

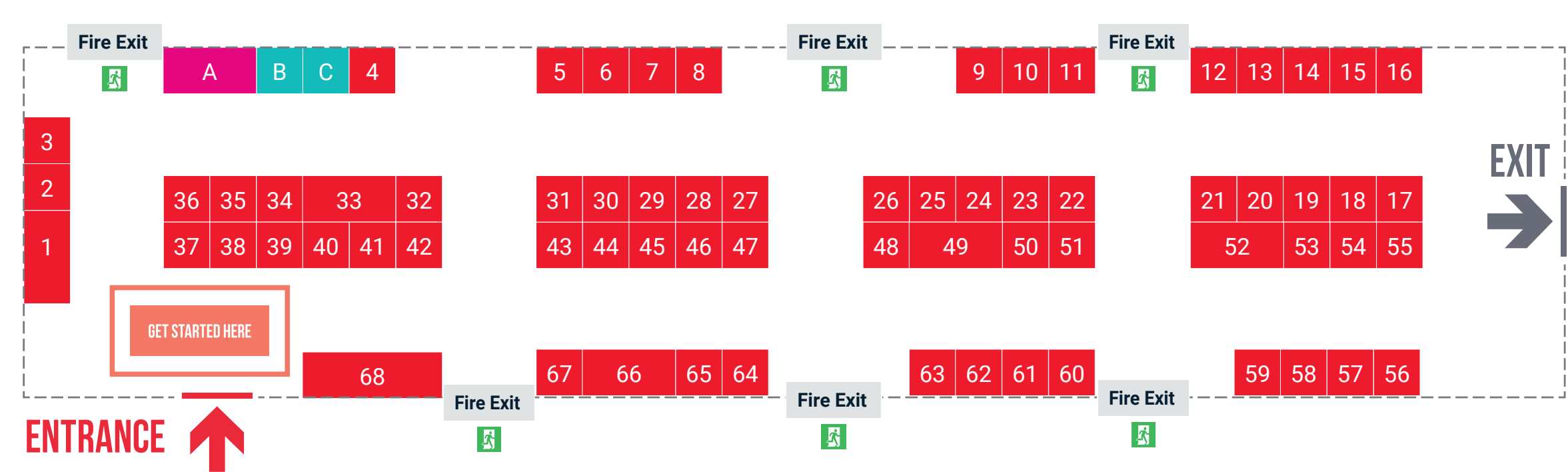
|                                      |     |
|--------------------------------------|-----|
| University of Liverpool              | 92  |
| Liverpool John Moores University     | 98  |
| London Metropolitan University       | 27  |
| London South Bank University         | 46  |
| Loughborough University              | 24  |
| The University of Manchester         | 91  |
| New College Swindon                  | 74  |
| University of Northampton            | 43  |
| Northeastern University London       | 44  |
| Northumbria University               | 69  |
| Norwich University of the Arts       | 2   |
| University of Nottingham             | 23  |
| Nottingham Trent University          | 42  |
| University of Oxford                 | 45  |
| Oxford Brookes University            | 101 |
| Plumpton College                     | 82  |
| University of Plymouth               | 61  |
| Plymouth Marjon University           | 90  |
| Arts University Plymouth             | 88  |
| University of Portsmouth             | 52  |
| Queen Mary University of London      | 86  |
| Queens University Belfast            | 15  |
| Ravensbourne University London       | 28  |
| University of Reading                | 57  |
| Roehampton University                | 30  |
| Royal Agricultural University        | 77  |
| Royal Conservatoire of Scotland      | 48  |
| Royal Holloway, University of London | 32  |

|                                               |           |
|-----------------------------------------------|-----------|
| University of Salford                         | 14        |
| University of Sheffield                       | 76        |
| SOAS University of London                     | 54        |
| <b>University of Southampton</b>              | <b>93</b> |
| Southampton Solent University                 | 81        |
| University Centre Sparsholt                   | 83        |
| SP Jain London School of Management           | 72        |
| University of Staffordshire                   | 55        |
| St Marys University London                    | 39        |
| University of Stirling                        | 9         |
| University of Suffolk                         | 58        |
| University of Surrey                          | 33        |
| University of Sussex                          | 37        |
| Swansea University                            | 63        |
| Teesside University                           | 7         |
| The University of Wales Trinity Saint David   | 89        |
| University Campus of Football Business (UCFB) | 5         |
| University of the Arts London (UAL)           | 84        |
| University of South Wales                     | 21        |
| University of West London                     | 47        |
| University of the West of England (UWE)       | 4         |
| University of Warwick                         | 35        |
| University Centre Weston                      | 51        |
| <b>UNIVERSITY OF WINCHESTER</b>               | <b>68</b> |
| University of Worcester                       | 31        |
| Wrexham University                            | 73        |

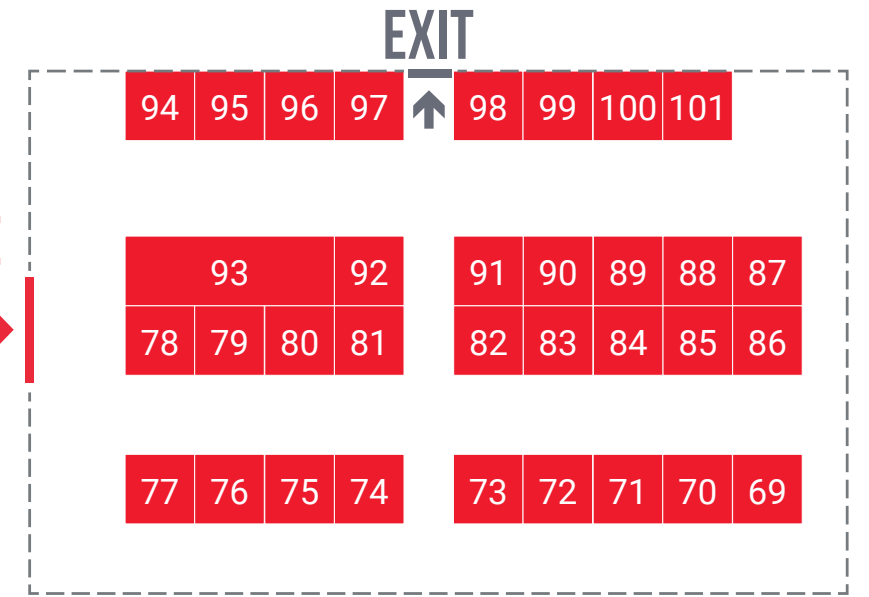
## INFORMATION & ADVICE

|                             |   |
|-----------------------------|---|
| UCAS                        | A |
| Employers & Apprenticeships |   |
| Specsavers                  | B |
| Softcat PLC                 | C |

### MARQUEE



### SPORTS HALL



Exhibitor list and floor plan are correct at the time of printing – see posters around the venue for up-to-date information.



# THE BIG Q&A

**GOT LOTS OF QUESTIONS ABOUT YOUR FUTURE? HERE ARE A FEW WAYS TO FIND THE ANSWERS YOU NEED TODAY:**



## GET STARTED HERE

Take a good look over this Events Guide to find out who's here, what's on offer. Visit the UCAS stand for some advice on the all important questions to ask.



## DISCOVER THE POSSIBILITIES

Find out about all of your options after school or college. Head to The Big Q&A stage to hear from the experts and discover courses, apprenticeships and all kinds of careers.



## ASK QUESTIONS. GET ADVICE

Talk to different universities, colleges, conservatoires, apprenticeship providers, and employers to get the answers you need to find your path.

# WHAT'S ON STAGE?

**WEDNESDAY 23 APRIL: THE BIG Q&A - LINE UP**



| Time        | Room   | Talk                                                            |
|-------------|--------|-----------------------------------------------------------------|
| 10:00-10:30 | SAB001 | Your options explained: how to figure out what's right for you. |
| 10:30-11:00 | SAB001 | What is an apprenticeship and is it right for me?               |
|             | SAB002 | History                                                         |
|             | SAB003 | Physiotherapy                                                   |
|             | SAB004 | Criminal Justice subjects                                       |
|             | SAB202 | Languages                                                       |
|             | SAB203 | Primary Education                                               |
| 11:00-11:30 | SAB204 | Economics, Accounting & Finance                                 |
|             | SAB001 | How to stand out: UCAS application and personal statement tips. |
|             | SAB002 | Law                                                             |
|             | SAB003 | Maths                                                           |
|             | SAB004 | Medicine                                                        |
|             | SAB202 | Psychology                                                      |
| 11:30-12:00 | SAB204 | Engineering                                                     |
|             | SAB301 | Computing Courses                                               |
|             | SAB001 | Your options explained: how to figure out what's right for you. |
|             | SAB002 | Veterinary Nursing                                              |
|             | SAB003 | English & Creative Writing                                      |
|             | SAB004 | Business Management                                             |
| 12:00-12:30 | SAB202 | Classical Studies                                               |
|             | SAB203 | Architecture                                                    |
|             | SAB204 | Nursing                                                         |
|             | SAB301 | Biochemistry                                                    |
|             | SAB001 | How to stand out: UCAS application and personal statement tips  |
|             | SAB002 | History                                                         |

| Time        | Room   | Talk                                                            |
|-------------|--------|-----------------------------------------------------------------|
| 12:00-12:30 | SAB003 | Physiotherapy                                                   |
|             | SAB004 | Criminal Justice Subjects                                       |
|             | SAB202 | Languages                                                       |
|             | SAB203 | Primary Education                                               |
| 12:30-13:00 | SAB204 | Economics, Accounting & Finance                                 |
|             | SAB001 | What is an apprenticeship and is it right for me?               |
|             | SAB002 | Law                                                             |
|             | SAB003 | Maths                                                           |
|             | SAB004 | Medicine                                                        |
|             | SAB202 | Psychology                                                      |
| 13:00-13:30 | SAB204 | Engineering                                                     |
|             | SAB301 | Computing Courses                                               |
|             | SAB001 | How to stand out: UCAS application and personal statement tips. |
|             | SAB002 | Veterinary Nursing                                              |
|             | SAB003 | English & Creative Writing                                      |
|             | SAB004 | Business Management                                             |
| 13:30-14:00 | SAB202 | Classical Studies                                               |
|             | SAB203 | Architecture                                                    |
|             | SAB204 | Nursing                                                         |
|             | SAB301 | Biochemistry                                                    |
|             | SAB001 | Your options explained: how to figure out what's right for you. |
|             | SAB002 | Law                                                             |
| 12:00-12:30 | SAB003 | Maths                                                           |
|             | SAB004 | Medicine                                                        |
|             | SAB202 | Psychology                                                      |
|             | SAB203 | Primary Education                                               |
|             | SAB204 | Engineering                                                     |
|             | SAB301 | Computing Courses                                               |

# LOOKING FOR CAREER INSPIRATION?



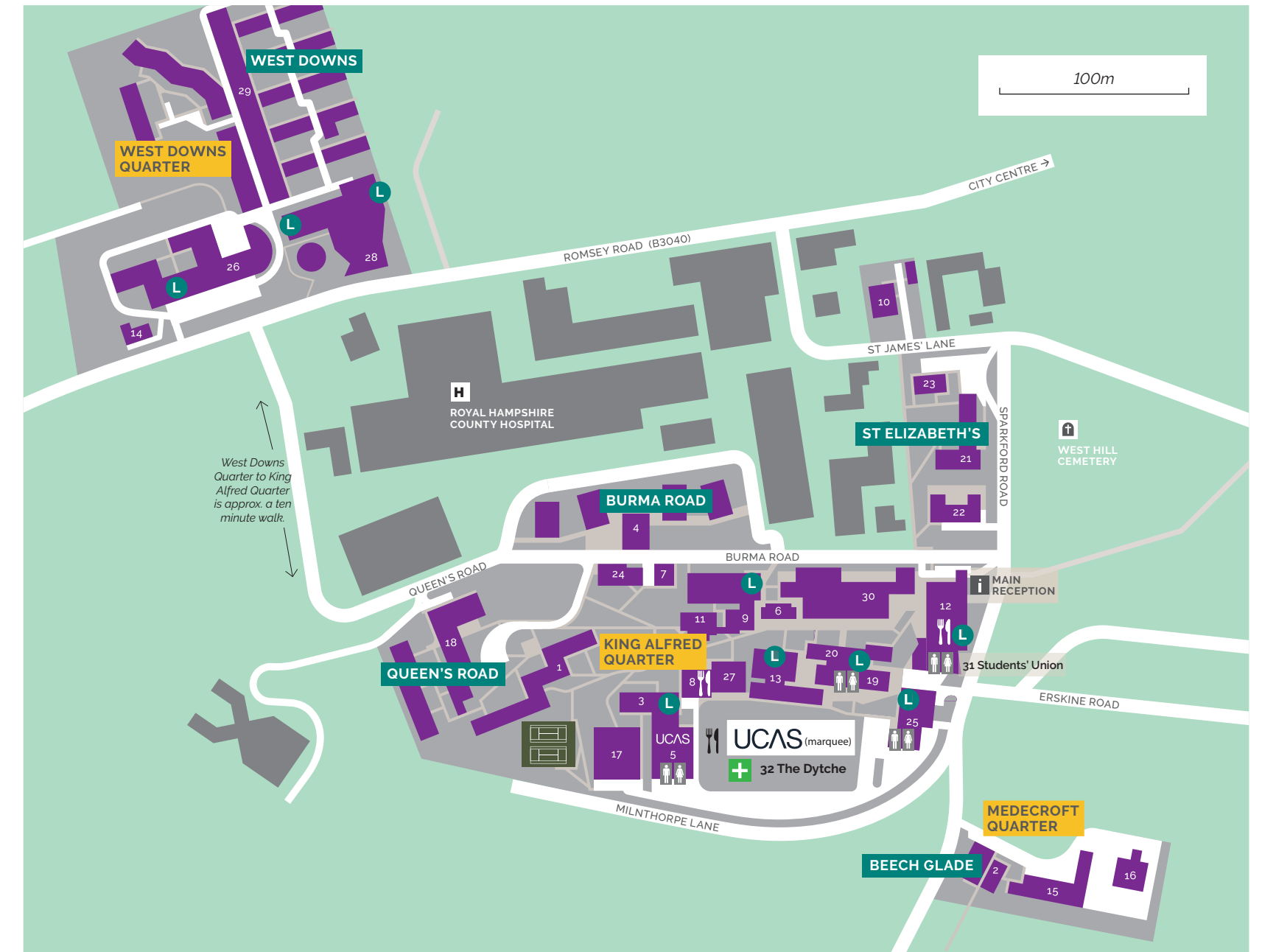
Match your personality to different career possibilities. Take our Careers Quiz: [ucas.com/careers-quiz](https://ucas.com/careers-quiz)

# WHAT PATH WILL YOU TAKE?



Explore different courses, universities, employers, and apprenticeships in one place. Save your favourites. Make notes. Check deadlines. Take part in live sessions. Watch videos on-demand.

## FIND YOUR WAY ROUND CAMPUS



- 1 Alwyn Hall (AH)
- 2 Beech Glade Hall (BGH)
- 3 Bowers Building (BB)
- 4 Burma Road Student Village (BRSV)
- 5 Centre for Sport (CFS) (UCAS stands)
- 6 Chapel
- 7 Cottage
- 8 Fred Wheeler Building (FWB)
- 9 Herbert Jarman Building (HJB)
- 10 Holm Lodge (HL)
- 11 Kenneth Kettle Building (KKB)
- 12 King Alfred Centre (KAC)
- 13 Martial Rose Library (MRL)
- 14 Masters Lodge
- 15 Medecroft (MC)
- 16 Medecroft Annexe (MCA)
- 17 Paul Chamberlain Building (PCB)
- 18 Queen's Road Student Village (QRSV)
- 19 St Alphege (SAB)
- 20 St Edburga (SEB)
- 21 St Elizabeth's Hall (SEH)
- 22 St Grimbold's Court (SGC)
- 23 St James' Hall
- 24 St Swithun's Lodge (SSL)
- 25 The Stripe
- 26 The University of Winchester Business School (UWBS)
- 27 Tom Atkinson Building (TAB)
- 28 West Downs Centre (WDC)
- 29 West Downs Student Village (WDSV)
- 30 Winton Building (WB)
- 31 Students' Union
- 32 The Dytche (UCAS stands in marquee)

**UCAS**

**First Aid**

**Nearest Toilets**

**Nearest Catering**

**LIFT**