

U40 University of the West of Scotland

Cycle years: 2012 - 2017

Cycle Reference Point: End of Cycle

Applicant coverage: UK domiciled

Reporting groups: Sex, POLAR3, SIMD 2016, ethnic group

Applicant statistics: June deadline applicants, placed June deadline applicants, all placed applicants, June deadline applicants per 10,000 population, placed June deadline applicants per 10,000 population, all placed applicants per 10,000 population

Application statistics: June deadline applications, offers, offer rate, average offer rate, percentage point difference between offer rate and average offer rate, contribution of group to the average offer rate

Non-disclosure controls: To avoid the disclosure of information about any individual the following measures are taken

- Applicants, placed applicants, applications and offers are rounded to the nearest 5.
- Applicants/placed applicants per 10,000 population figures are reported as 0 if the applicant/placed applicant figures are rounded to 0.
- All statistics related to the offer rate are not reported when the number of applications for a group is less than 10. The percentage point difference between the offer rate and the average offer rate is not reported when the number of applications for a group is less than 50.
- Offer rates are reported as 0% if there are fewer than 5 offers, and 100% if the number of offers is within 5 of the number of applications. When the offer rate is reported as 0% or 100%, it is reported in italics.

Contents:

18 year old applicants:	P.1
18 year old applications:	P.2
18 year old applicants by sex:	P.3
18 year old applications by sex:	P.4
18 year old applicants by POLAR3 quintile:	P.7
18 year old applications by POLAR3 quintile:	P.8
18 year old, Scotland domiciled applicants by SIMD 2016 quintile:	P.11
18 year old, Scotland domiciled applications by SIMD 2016 quintile:	P.12
18 year old applicants by ethnic group:	P.15
18 year old applications by ethnic group:	P.16
Applicants (all ages):	P.19
Applications (all ages):	P.20
Applicants (all ages) by sex:	P.21
Applications (all ages) by sex:	P.22
Applicants (all ages) by POLAR3 quintile:	P.23
Applications (all ages) by POLAR3 quintile:	P.24
Scotland domiciled applicants (all ages) by SIMD 2016 quintile:	P.25
Scotland domiciled applications (all ages) by SIMD 2016 quintile:	P.26
Applicants (all ages) by ethnic group:	P.27
Applications (all ages) by ethnic group:	P.28

P.1 18 year old applicants

Statistic	2012	2013	2014	2015	2016	2017
June deadline applicants	3,665	3,695	4,080	3,915	3,595	3,400
Placed June deadline applicants	855	755	610	605	625	730
All placed applicants	1,100	970	740	870	810	920
June deadline applicants per 10,000 population	47.4	48.5	54.2	51.1	47.9	45.9
Placed June deadline applicants per 10,000	11.0	9.9	8.1	7.9	8.3	9.9
All placed applicants per 10,000 population	14.2	12.8	9.8	11.3	10.8	12.4

P.2 18 year old applications

Statistic	2012	2013	2014	2015	2016	2017
June deadline applications	4,925	4,885	5,425	4,920	4,525	4,215
Offers	3,615	3,310	3,380	3,185	3,110	3,070
Offer rate	73.4%	67.8%	62.4%	64.8%	68.8%	72.9%

P.3 18 year old applicants by sex

Statistic	Sex	2012	2013	2014	2015	2016	2017
June deadline applicants	Men	1,475	1,515	1,650	1,510	1,320	1,280
	Women	2,190	2,180	2,430	2,410	2,275	2,115
Placed June deadline applicants	Men	355	340	250	250	240	300
	Women	495	415	355	355	385	430
All placed applicants	Men	470	430	305	375	315	390
	Women	630	540	435	495	495	525
June deadline applicants per 10,000 population	Men	37.1	38.8	42.6	38.4	34.4	33.8
	Women	58.1	58.8	66.4	64.5	62.2	58.6
Placed June deadline applicants per 10,000 population	Men	9.0	8.7	6.5	6.4	6.3	8.0
	Women	13.2	11.3	9.8	9.5	10.5	11.9
All placed applicants per 10,000 population	Men	11.8	11.0	7.9	9.6	8.1	10.3
	Women	16.7	14.6	11.8	13.2	13.6	14.6

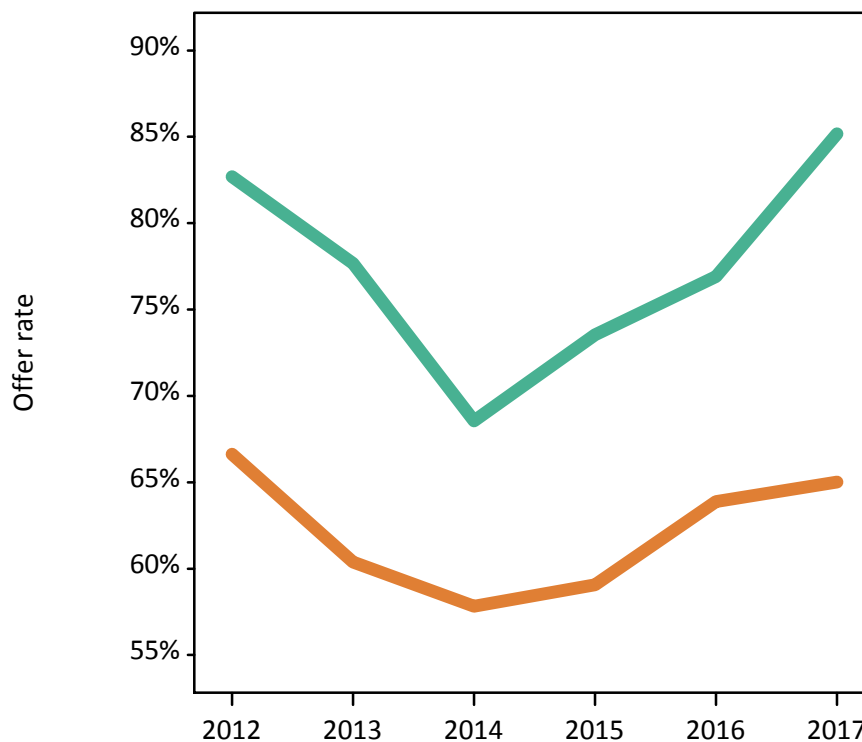
P.4 18 year old applications by sex

Statistic	Sex	2012	2013	2014	2015	2016	2017
June deadline applications	Men	2,080	2,090	2,290	1,935	1,700	1,640
	Women	2,845	2,790	3,135	2,985	2,820	2,575
Offers	Men	1,720	1,625	1,570	1,425	1,310	1,395
	Women	1,895	1,685	1,810	1,765	1,805	1,675
Offer rate	Men	82.7%	77.7%	68.6%	73.5%	76.9%	85.2%
	Women	66.6%	60.4%	57.8%	59.1%	63.9%	65.0%
Average offer rate	Men	83.3%	77.5%	68.3%	73.3%	77.0%	84.9%
	Women	66.2%	60.5%	58.0%	59.2%	63.8%	65.2%
Percentage point difference between offer rate and average offer rate	Men	-0.6	0.2	0.3	0.2	-0.1	0.3
	Women	0.4	-0.2	-0.2	-0.2	0.1	-0.2
Contribution of group to the average offer rate	Men	0.650	0.662	0.650	0.620	0.581	0.621
	Women	0.744	0.747	0.745	0.754	0.748	0.759

P.5 18 year old offer rate by sex

Note: The line for a group is not plotted when that group made fewer than 10 applications in any of the years from 2012-2017.

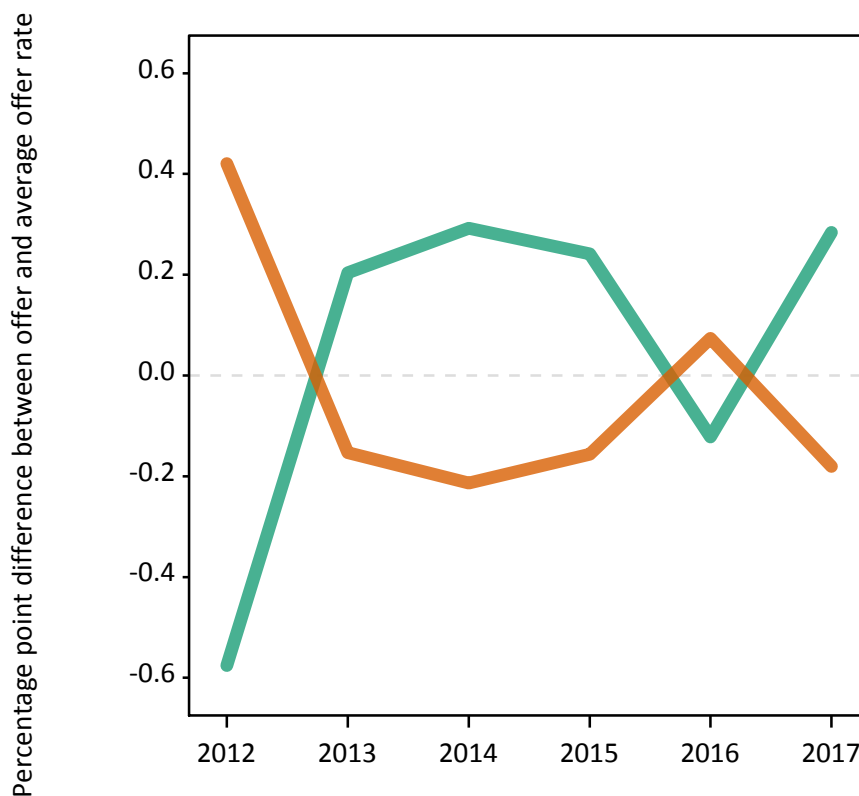
Men
Women



P.6 Percentage point difference between 18 year old offer rate and average offer rate by sex

Note: The line for a group is not plotted when that group made fewer than 50 applications in any of the years from 2012-2017.

Men
Women



P.7 18 year old applicants by POLAR3 quintile

Statistic	POLAR3 quintile	2012	2013	2014	2015	2016	2017
June deadline applicants	Quintile 1	220	240	285	300	260	280
	Quintile 2	565	575	695	620	615	595
	Quintile 3	765	720	760	765	750	710
	Quintile 4	895	885	990	955	810	760
	Quintile 5	1,215	1,265	1,345	1,275	1,150	1,050
Placed June deadline applicants	Quintile 1	55	50	35	35	30	50
	Quintile 2	140	100	110	80	105	130
	Quintile 3	190	170	105	125	140	160
	Quintile 4	200	170	145	150	130	145
	Quintile 5	265	265	210	215	215	245
All placed applicants	Quintile 1	75	65	45	50	40	65
	Quintile 2	180	130	125	115	125	165
	Quintile 3	230	215	135	175	175	200
	Quintile 4	260	225	175	205	165	190
	Quintile 5	350	340	255	320	300	305
June deadline applicants per 10,000 population	Quintile 1	15.6	17.2	20.5	21.5	19.4	20.9
	Quintile 2	37.7	39.0	47.5	41.7	42.5	42.0
	Quintile 3	49.4	47.3	50.6	49.7	49.8	47.5
	Quintile 4	56.3	56.5	64.2	61.0	52.6	49.8
	Quintile 5	72.3	76.6	82.3	76.1	69.6	64.1
Placed June deadline applicants per 10,000 population	Quintile 1	3.9	3.7	2.6	2.6	2.3	3.8
	Quintile 2	9.2	6.8	7.5	5.5	7.3	9.3
	Quintile 3	12.4	11.1	7.1	8.1	9.2	10.7
	Quintile 4	12.7	10.9	9.5	9.5	8.4	9.5
	Quintile 5	15.7	16.1	12.8	12.8	13.1	14.9
All placed applicants per 10,000 population	Quintile 1	5.2	4.5	3.2	3.6	3.0	4.9
	Quintile 2	11.9	8.8	8.7	7.7	8.7	11.5
	Quintile 3	15.0	14.0	9.1	11.5	11.6	13.3
	Quintile 4	16.4	14.5	11.4	13.2	10.8	12.3
	Quintile 5	20.8	20.4	15.7	19.1	18.2	18.6

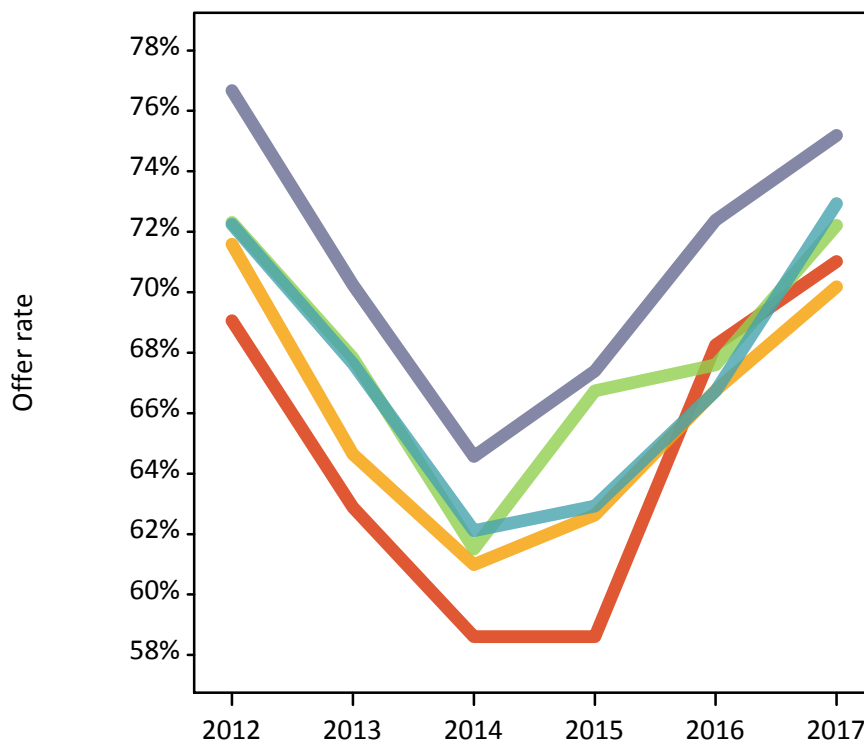
P.8 18 year old applications by POLAR3 quintile

Statistic	POLAR3 quintile	2012	2013	2014	2015	2016	2017
June deadline applications	Quintile 1	305	325	360	370	315	345
	Quintile 2	785	760	935	775	780	730
	Quintile 3	1,040	975	1,020	970	965	880
	Quintile 4	1,200	1,170	1,310	1,195	1,015	945
	Quintile 5	1,585	1,650	1,790	1,605	1,445	1,310
Offers	Quintile 1	210	205	210	220	215	245
	Quintile 2	560	490	570	485	520	515
	Quintile 3	750	660	630	645	650	635
	Quintile 4	865	790	815	750	675	690
	Quintile 5	1,215	1,160	1,155	1,080	1,045	985
Offer rate	Quintile 1	69.1%	62.9%	58.6%	58.6%	68.3%	71.0%
	Quintile 2	71.6%	64.6%	61.0%	62.6%	66.8%	70.2%
	Quintile 3	72.3%	67.8%	61.5%	66.7%	67.6%	72.2%
	Quintile 4	72.3%	67.6%	62.1%	62.9%	66.7%	72.9%
	Quintile 5	76.7%	70.2%	64.6%	67.4%	72.4%	75.2%
Average offer rate	Quintile 1	69.6%	66.7%	61.6%	61.6%	69.6%	70.9%
	Quintile 2	73.4%	67.0%	60.9%	64.1%	68.0%	71.3%
	Quintile 3	72.5%	66.4%	61.8%	64.9%	67.7%	72.1%
	Quintile 4	72.8%	67.5%	62.4%	64.0%	67.3%	73.1%
	Quintile 5	75.2%	69.4%	63.7%	66.3%	70.9%	74.5%
Percentage point difference between offer rate and average offer rate	Quintile 1	-0.6	-3.8	-3.0	-3.0	-1.3	0.1
	Quintile 2	-1.8	-2.4	0.1	-1.5	-1.3	-1.2
	Quintile 3	-0.1	1.4	-0.3	1.8	-0.1	0.1
	Quintile 4	-0.5	0.2	-0.2	-1.1	-0.5	-0.2
	Quintile 5	1.5	0.9	0.9	1.1	1.5	0.7
Contribution of group to the average offer rate	Quintile 1	0.145	0.129	0.133	0.137	0.160	0.145
	Quintile 2	0.208	0.201	0.209	0.200	0.217	0.226
	Quintile 3	0.252	0.244	0.228	0.239	0.254	0.255
	Quintile 4	0.285	0.278	0.277	0.282	0.266	0.263
	Quintile 5	0.359	0.377	0.366	0.370	0.360	0.351

P.9 18 year old offer rate by POLAR3 quintile

Note: The line for a group is not plotted when that group made fewer than 10 applications in any of the years from 2012-2017.

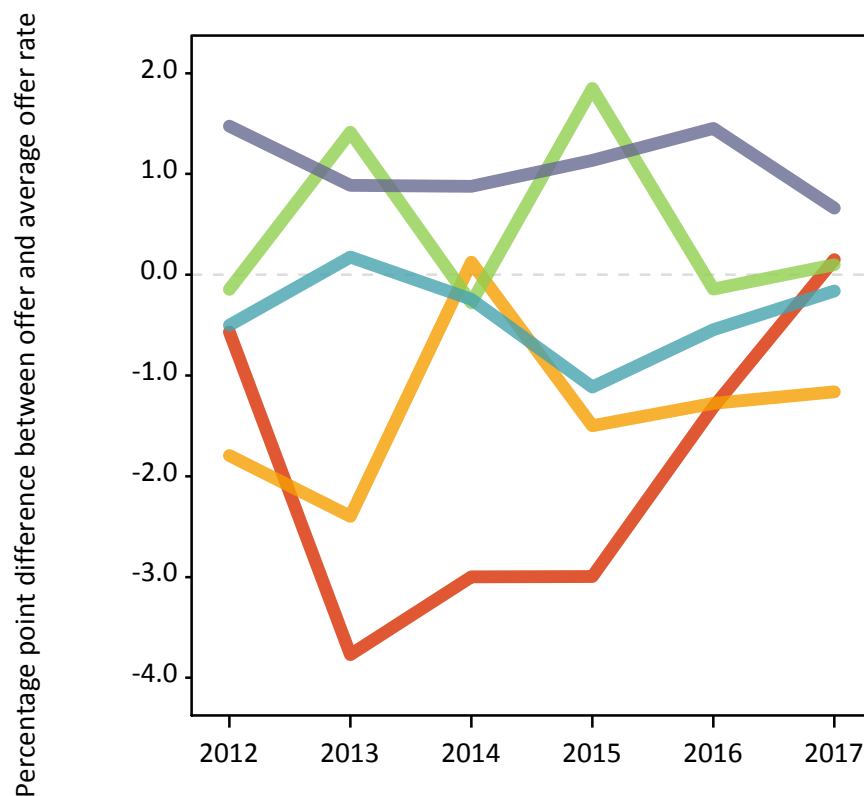
- Quintile 1
- Quintile 2
- Quintile 3
- Quintile 4
- Quintile 5



P.10 Percentage point difference between 18 year old offer rate and average offer rate by POLAR3 quintile

Note: The line for a group is not plotted when that group made fewer than 50 applications in any of the years from 2012-2017.

- Quintile 1
- Quintile 2
- Quintile 3
- Quintile 4
- Quintile 5



P.11 18 year old, Scotland domiciled applicants by SIMD 2016 quintile

Statistic	SIMD quintile	2012	2013	2014	2015	2016	2017
June deadline applicants	Quintile 1	625	570	730	675	670	655
	Quintile 2	680	670	740	675	670	630
	Quintile 3	680	710	735	755	610	620
	Quintile 4	715	745	810	735	670	625
	Quintile 5	765	765	830	835	765	670
Placed June deadline applicants	Quintile 1	170	130	110	85	110	125
	Quintile 2	185	140	130	100	120	130
	Quintile 3	150	145	105	140	115	155
	Quintile 4	160	170	120	135	120	150
	Quintile 5	170	160	135	135	150	165
All placed applicants	Quintile 1	210	160	130	120	130	155
	Quintile 2	230	185	150	140	150	165
	Quintile 3	190	195	120	180	155	195
	Quintile 4	210	205	155	195	165	185
	Quintile 5	230	210	175	210	200	205
June deadline applicants per 10,000 population	Quintile 1	491.0	445.2	576.2	549.7	556.3	564.3
	Quintile 2	574.2	567.5	629.9	590.7	610.4	586.0
	Quintile 3	567.6	599.9	627.4	645.4	542.6	571.9
	Quintile 4	574.4	604.3	659.8	612.3	558.3	534.3
	Quintile 5	590.3	596.0	646.2	656.7	610.4	536.0
Placed June deadline applicants per 10,000 population	Quintile 1	134.3	100.3	85.8	69.8	90.2	107.0
	Quintile 2	157.9	120.6	109.7	87.6	110.8	121.3
	Quintile 3	124.6	122.7	90.6	118.0	103.9	144.6
	Quintile 4	127.6	136.7	98.6	114.0	99.3	128.6
	Quintile 5	132.1	125.1	106.8	106.8	120.0	130.2
All placed applicants per 10,000 population	Quintile 1	166.5	124.6	103.1	96.6	109.3	135.5
	Quintile 2	195.1	155.5	125.8	124.5	136.2	152.1
	Quintile 3	158.0	165.0	103.4	153.0	139.4	181.4
	Quintile 4	166.9	167.5	125.4	163.9	136.0	159.5
	Quintile 5	177.7	163.9	137.2	165.8	158.4	164.5

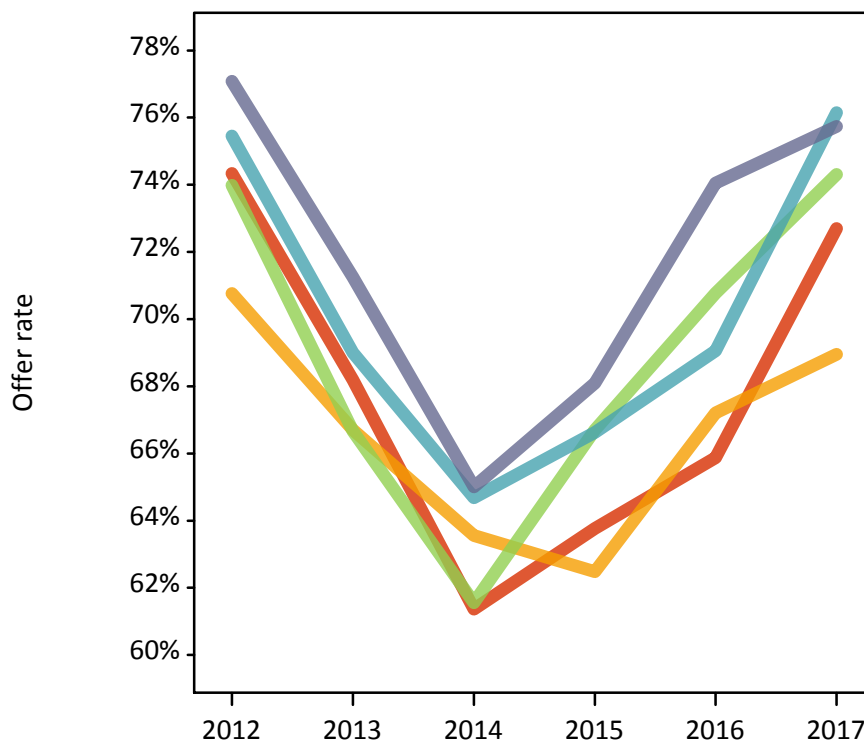
P.12 18 year old, Scotland domiciled applications by SIMD 2016 quintile

Statistic	SIMD quintile	2012	2013	2014	2015	2016	2017
June deadline applications	Quintile 1	910	785	1,000	885	885	825
	Quintile 2	945	935	1,020	855	865	820
	Quintile 3	905	925	965	945	765	790
	Quintile 4	950	970	1,075	940	850	765
	Quintile 5	1,010	1,020	1,125	1,055	950	810
Offers	Quintile 1	675	535	615	565	585	600
	Quintile 2	670	625	645	535	580	565
	Quintile 3	670	620	595	630	540	585
	Quintile 4	715	670	695	625	585	580
	Quintile 5	775	725	730	715	700	615
Offer rate	Quintile 1	74.3%	68.2%	61.4%	63.8%	65.9%	72.7%
	Quintile 2	70.8%	66.7%	63.6%	62.5%	67.2%	68.9%
	Quintile 3	74.0%	66.7%	61.6%	66.7%	70.8%	74.3%
	Quintile 4	75.4%	69.0%	64.7%	66.6%	69.1%	76.1%
	Quintile 5	77.1%	71.2%	65.0%	68.1%	74.1%	75.7%
Average offer rate	Quintile 1	74.8%	69.6%	63.5%	65.6%	69.8%	74.2%
	Quintile 2	71.7%	67.6%	62.6%	65.3%	67.7%	71.1%
	Quintile 3	74.5%	66.8%	62.1%	65.2%	68.4%	73.6%
	Quintile 4	74.6%	69.1%	64.6%	64.6%	69.6%	74.7%
	Quintile 5	76.2%	69.2%	63.7%	67.5%	71.4%	74.1%
Percentage point difference between offer rate and average offer rate	Quintile 1	-0.5	-1.4	-2.1	-1.8	-3.9	-1.5
	Quintile 2	-0.9	-0.8	1.0	-2.8	-0.5	-2.1
	Quintile 3	-0.5	-0.2	-0.5	1.5	2.4	0.7
	Quintile 4	0.8	-0.1	0.1	2.0	-0.5	1.5
	Quintile 5	0.9	2.1	1.3	0.6	2.7	1.6
Contribution of group to the average offer rate	Quintile 1	0.217	0.198	0.217	0.214	0.234	0.237
	Quintile 2	0.232	0.221	0.215	0.204	0.226	0.228
	Quintile 3	0.214	0.226	0.201	0.215	0.196	0.218
	Quintile 4	0.220	0.232	0.223	0.220	0.224	0.218
	Quintile 5	0.245	0.240	0.239	0.251	0.248	0.224

P.13 18 year old, Scotland domiciled offer rate by SIMD 2016 quintile

Note: The line for a group is not plotted when that group made fewer than 10 applications in any of the years from 2012-2017.

- Quintile 1
- Quintile 2
- Quintile 3
- Quintile 4
- Quintile 5



P.14 Percentage point difference between 18 year old, Scotland domiciled offer rate and average offer rate by SIMD 2016 quintile

Note: The line for a group is not plotted when that group made fewer than 50 applications in any of the years from 2012-2017.

- Quintile 1
- Quintile 2
- Quintile 3
- Quintile 4
- Quintile 5



P.15 18 year old applicants by ethnic group

Statistic	Ethnic group	2012	2013	2014	2015	2016	2017
June deadline applicants	Asian	165	160	160	160	155	170
	Black	25	30	40	30	45	40
	Mixed	30	35	45	55	55	40
	White	3,425	3,450	3,820	3,645	3,315	3,120
	Other	10	15	10	15	15	20
Placed June deadline applicants	Asian	35	25	15	20	20	35
	Black	5	5	0	5	5	5
	Mixed	5	10	5	5	10	5
	White	800	720	585	570	585	680
	Other	5	5	0	5	5	5
All placed applicants	Asian	60	40	25	40	40	45
	Black	10	5	5	5	5	5
	Mixed	5	10	5	5	10	5
	White	1,020	910	705	805	750	855
	Other	5	5	0	5	5	5
June deadline applicants per 10,000 population	Asian	25.5	24.1	23.9	22.9	21.8	23.0
	Black	8.5	9.8	12.5	8.8	14.1	12.1
	Mixed	11.9	12.6	15.3	17.8	16.8	12.5
	White	53.0	54.8	61.9	58.5	54.8	52.6
	Other	12.4	16.5	9.7	16.6	14.1	18.4
Placed June deadline applicants per 10,000 population	Asian	5.4	3.6	2.5	3.0	3.1	5.0
	Black	2.5	1.3	0.0	0.9	1.3	1.3
	Mixed	2.3	3.0	1.4	1.6	2.5	1.2
	White	12.4	11.4	9.5	9.1	9.7	11.4
	Other	3.4	3.3	0.0	5.2	3.0	5.8
All placed applicants per 10,000 population	Asian	9.1	6.4	3.7	5.4	5.6	6.4
	Black	3.6	1.7	1.3	1.6	1.9	1.3
	Mixed	2.7	3.3	1.4	2.3	2.9	1.9
	White	15.8	14.5	11.4	12.9	12.4	14.4
	Other	3.4	3.3	0.0	7.3	4.0	5.8

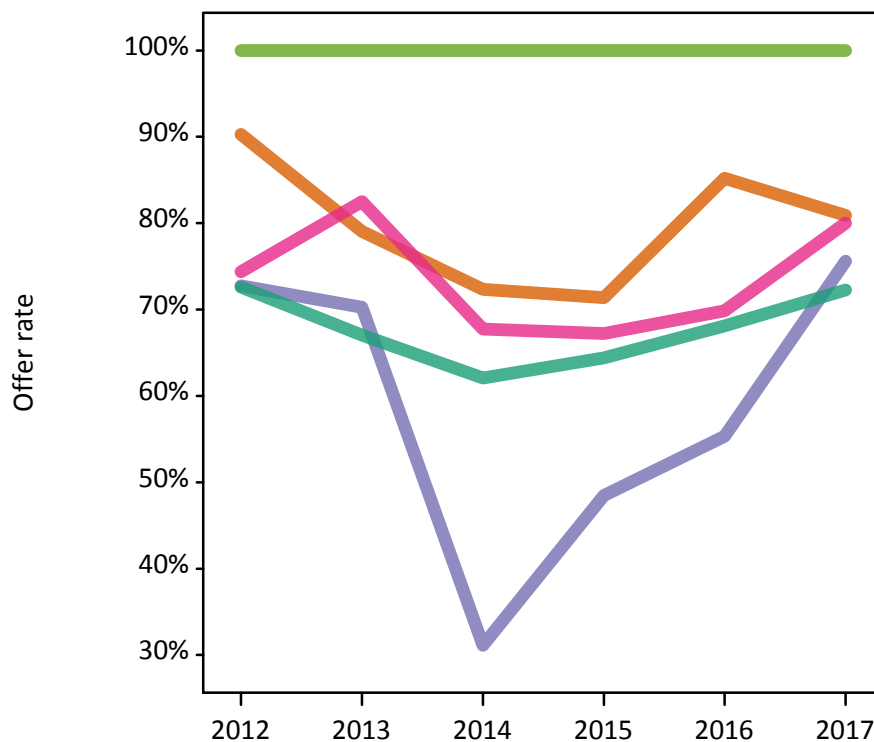
P.16 18 year old applications by ethnic group

Statistic	Ethnic group	2012	2013	2014	2015	2016	2017
June deadline applications	Asian	215	210	225	205	195	205
	Black	35	35	45	35	45	40
	Mixed	40	40	60	60	65	45
	White	4,610	4,570	5,070	4,585	4,180	3,890
	Other	20	15	10	20	25	25
Offers	Asian	195	165	160	145	165	165
	Black	25	25	15	15	25	30
	Mixed	30	35	40	40	45	35
	White	3,345	3,065	3,145	2,950	2,845	2,810
	Other	15	15	5	15	20	20
Offer rate	Asian	90.3%	79.0%	72.3%	71.4%	85.2%	80.9%
	Black	72.7%	70.3%	31.1%	48.5%	55.3%	75.6%
	Mixed	74.4%	82.5%	67.7%	67.2%	69.8%	80.0%
	White	72.6%	67.0%	62.1%	64.4%	68.1%	72.2%
	Other	100.0%	100.0%	100.0%	100.0%	100.0%	100.0%
Average offer rate	Asian	87.0%	79.4%	76.4%	74.3%	82.4%	83.0%
	Black	81.1%	72.9%	59.1%	62.9%	72.3%	80.8%
	Mixed	79.2%	79.0%	67.9%	69.0%	72.1%	76.3%
	White	72.6%	67.0%	61.6%	64.2%	68.0%	72.2%
	Other	75.5%	90.5%	77.8%	77.0%	81.0%	77.6%
Percentage point difference between offer rate and average offer rate	Asian	3.3	-0.4	-4.1	-2.9	2.8	-2.1
	Black	N/A	N/A	N/A	N/A	N/A	N/A
	Mixed	N/A	N/A	-0.1	-1.8	-2.2	N/A
	White	-0.1	-0.0	0.4	0.2	0.1	0.1
	Other	N/A	N/A	N/A	N/A	N/A	N/A
Contribution of group to the average offer rate	Asian	0.139	0.108	0.112	0.133	0.148	0.147
	Black	0.138	0.119	0.101	0.145	0.158	0.192
	Mixed	0.090	0.133	0.096	0.098	0.161	0.148
	White	0.944	0.943	0.940	0.940	0.935	0.933
	Other	0.105	0.061	0.068	0.065	0.081	0.112

P.17 18 year old offer rate by ethnic group

Note: The line for a group is not plotted when that group made fewer than 10 applications in any of the years from 2012-2017.

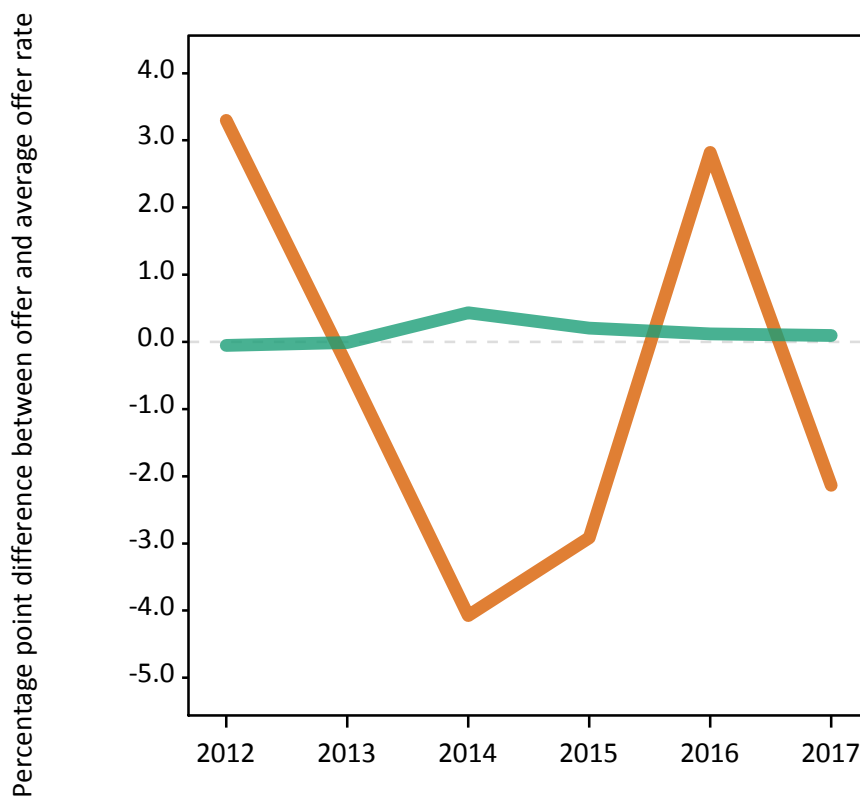
- Asian
- Black
- Mixed
- White
- Other



P.18 Percentage point difference between 18 year old offer rate and average offer rate by ethnic group

Note: The line for a group is not plotted when that group made fewer than 50 applications in any of the years from 2012-2017.

- Asian
- Black
- Mixed
- White
- Other



P.19 Applicants (all ages)

Statistic	2012	2013	2014	2015	2016	2017
June deadline applicants	10,400	10,925	11,700	13,315	13,175	12,980
Placed June deadline applicants	3,170	3,095	2,925	3,235	3,195	3,585
All placed applicants	3,850	3,730	3,305	3,985	3,825	4,235

P.20 Applications (all ages)

Statistic	2012	2013	2014	2015	2016	2017
June deadline applications	14,230	14,805	16,320	17,890	17,630	17,490
Offers	8,830	8,640	8,880	9,080	9,245	9,830
Offer rate	62.0%	58.4%	54.4%	50.8%	52.4%	56.2%

P.21 Applicants (all ages) by sex

Statistic	Sex	2012	2013	2014	2015	2016	2017
June deadline applicants	Men	4,015	4,265	4,400	4,595	4,520	4,295
	Women	6,385	6,660	7,300	8,720	8,655	8,685
Placed June deadline applicants	Men	1,285	1,280	1,125	1,170	1,110	1,190
	Women	1,885	1,815	1,795	2,065	2,085	2,395
All placed applicants	Men	1,575	1,530	1,280	1,495	1,380	1,500
	Women	2,275	2,195	2,030	2,490	2,440	2,740

P.22 Applications (all ages) by sex

Statistic	Sex	2012	2013	2014	2015	2016	2017
June deadline applications	Men	5,650	5,940	6,310	6,120	6,020	5,780
	Women	8,580	8,865	10,010	11,770	11,615	11,710
Offers	Men	4,035	4,040	3,925	3,770	3,775	3,925
	Women	4,795	4,600	4,955	5,310	5,475	5,905
Offer rate	Men	71.4%	68.0%	62.2%	61.6%	62.7%	67.9%
	Women	55.9%	51.9%	49.5%	45.1%	47.1%	50.4%

P.23 Applicants (all ages) by POLAR3 quintile

Statistic	POLAR3 quintile	2012	2013	2014	2015	2016	2017
June deadline applicants	Quintile 1	825	875	1,010	1,160	1,115	1,175
	Quintile 2	1,905	1,945	2,185	2,390	2,365	2,475
	Quintile 3	2,120	2,190	2,350	2,600	2,665	2,550
	Quintile 4	2,320	2,515	2,630	3,025	2,940	2,830
	Quintile 5	3,210	3,375	3,515	4,125	4,065	3,920
Placed June deadline applicants	Quintile 1	255	235	250	270	250	305
	Quintile 2	595	570	605	615	600	775
	Quintile 3	650	645	585	685	675	725
	Quintile 4	700	700	640	700	710	770
	Quintile 5	965	940	840	970	955	1,010
All placed applicants	Quintile 1	320	270	280	335	295	375
	Quintile 2	725	650	665	720	695	890
	Quintile 3	780	790	665	835	805	860
	Quintile 4	840	850	725	870	850	895
	Quintile 5	1,175	1,150	970	1,220	1,175	1,200

P.24 Applications (all ages) by POLAR3 quintile

Statistic	POLAR3 quintile	2012	2013	2014	2015	2016	2017
June deadline applications	Quintile 1	1,145	1,180	1,355	1,575	1,510	1,615
	Quintile 2	2,680	2,685	3,125	3,325	3,305	3,390
	Quintile 3	2,900	3,005	3,315	3,500	3,605	3,450
	Quintile 4	3,185	3,390	3,655	3,980	3,870	3,800
	Quintile 5	4,295	4,515	4,850	5,485	5,305	5,180
Offers	Quintile 1	665	655	705	755	755	870
	Quintile 2	1,590	1,505	1,640	1,660	1,715	1,930
	Quintile 3	1,820	1,750	1,785	1,815	1,905	1,935
	Quintile 4	1,940	1,985	2,015	2,015	2,000	2,145
	Quintile 5	2,800	2,730	2,730	2,825	2,855	2,930
Offer rate	Quintile 1	57.9%	55.2%	51.8%	47.9%	49.9%	54.0%
	Quintile 2	59.3%	56.0%	52.4%	49.9%	52.0%	57.0%
	Quintile 3	62.8%	58.3%	53.8%	51.8%	52.8%	56.1%
	Quintile 4	60.9%	58.5%	55.1%	50.6%	51.7%	56.5%
	Quintile 5	65.2%	60.4%	56.3%	51.5%	53.8%	56.5%

P.25 Scotland domiciled applicants (all ages) by SIMD 2016 quintile

Statistic	SIMD quintile	2012	2013	2014	2015	2016	2017
June deadline applicants	Quintile 1	2,510	2,450	2,960	3,170	3,195	3,310
	Quintile 2	2,045	2,225	2,360	2,595	2,625	2,545
	Quintile 3	1,915	2,035	2,080	2,410	2,315	2,280
	Quintile 4	1,710	1,835	1,895	2,215	2,260	2,140
	Quintile 5	1,740	1,805	1,850	2,285	2,230	2,175
Placed June deadline applicants	Quintile 1	865	740	840	880	885	995
	Quintile 2	685	695	630	665	690	755
	Quintile 3	570	590	540	595	585	690
	Quintile 4	510	530	430	565	510	575
	Quintile 5	485	505	450	480	490	535
All placed applicants	Quintile 1	1,035	880	925	1,050	1,040	1,165
	Quintile 2	810	810	705	790	820	870
	Quintile 3	690	720	600	730	690	815
	Quintile 4	625	640	500	700	610	685
	Quintile 5	610	620	530	635	605	645

P.26 Scotland domiciled applications (all ages) by SIMD 2016 quintile

Statistic	SIMD quintile	2012	2013	2014	2015	2016	2017
June deadline applications	Quintile 1	3,595	3,420	4,220	4,470	4,540	4,645
	Quintile 2	2,855	3,100	3,420	3,520	3,655	3,520
	Quintile 3	2,600	2,765	2,870	3,205	3,045	3,110
	Quintile 4	2,340	2,475	2,630	3,005	2,955	2,845
	Quintile 5	2,320	2,435	2,575	2,995	2,835	2,790
Offers	Quintile 1	2,190	1,935	2,265	2,315	2,400	2,630
	Quintile 2	1,750	1,835	1,815	1,785	1,915	1,960
	Quintile 3	1,605	1,625	1,590	1,645	1,590	1,745
	Quintile 4	1,515	1,465	1,485	1,540	1,520	1,645
	Quintile 5	1,550	1,505	1,500	1,550	1,600	1,600
Offer rate	Quintile 1	60.9%	56.6%	53.7%	51.8%	52.8%	56.6%
	Quintile 2	61.2%	59.2%	53.1%	50.6%	52.4%	55.6%
	Quintile 3	61.8%	58.7%	55.3%	51.3%	52.2%	56.1%
	Quintile 4	64.8%	59.3%	56.5%	51.3%	51.5%	57.8%
	Quintile 5	67.0%	61.8%	58.3%	51.7%	56.5%	57.3%

P.27 Applicants (all ages) by ethnic group

Statistic	Ethnic group	2012	2013	2014	2015	2016	2017
June deadline applicants	Asian	470	520	505	585	610	580
	Black	290	255	305	340	365	375
	Mixed	110	110	130	160	160	165
	White	9,470	9,960	10,690	12,095	11,915	11,730
	Other	30	45	45	70	55	55
Placed June deadline applicants	Asian	140	135	105	155	115	155
	Black	65	55	55	65	80	85
	Mixed	30	30	30	30	40	35
	White	2,920	2,850	2,720	2,950	2,920	3,285
	Other	10	15	10	25	15	15
All placed applicants	Asian	195	200	130	210	180	205
	Black	85	70	65	85	120	110
	Mixed	35	35	30	40	50	55
	White	3,515	3,390	3,015	3,605	3,425	3,825
	Other	10	15	10	30	20	20

P.28 Applications (all ages) by ethnic group

Statistic	Ethnic group	2012	2013	2014	2015	2016	2017
June deadline applications	Asian	645	695	690	785	795	740
	Black	365	325	385	435	495	500
	Mixed	145	140	175	195	210	210
	White	13,000	13,545	14,975	16,305	15,965	15,880
	Other	45	55	55	95	85	65
Offers	Asian	495	515	450	485	505	520
	Black	165	165	140	150	215	225
	Mixed	95	90	105	105	120	125
	White	8,015	7,815	8,135	8,235	8,315	8,855
	Other	30	35	30	55	50	50
Offer rate	Asian	77.1%	74.0%	64.8%	62.0%	63.7%	70.5%
	Black	45.5%	50.5%	37.0%	34.8%	43.1%	44.8%
	Mixed	65.0%	65.0%	58.8%	54.6%	57.2%	59.1%
	White	61.7%	57.7%	54.3%	50.5%	52.1%	55.8%
	Other	63.6%	60.7%	50.9%	60.2%	58.3%	78.5%

Technical Notes and Definitions

UCAS undergraduate scheme

Adjustment

Adjustment allows applicants who have met and exceeded the terms of their conditional firm offer to seek and find a place at another provider whilst keeping their place at their original firm choice provider.

Clearing

Clearing is a route for applicants that are not placed and holding no offers to find a place on courses with vacancies.

Cycle year

The UCAS application cycle which runs from September to October the following year. For example the 2017 cycle runs from September 2016 through to October 2017.

End of cycle

The point in the cycle to which the numbers in this report refer, and the point at which the cycle is closed such that no more applications or offers can be made, and no more applicants can be placed. Numbers reported at the end of cycle exclude information on a small number of applicants who cancelled during the cycle.

Extra

Applicants who are unsuccessful in obtaining an offer or decline all offers may be eligible to apply through Extra, where they can apply to one further course at a time. Extra operates from 25 February until early July. It provides applicants who are eligible the possibility of obtaining an offer before exam results are published and Clearing starts.

June 30 deadline

The deadline for main scheme applications. Applicants who apply after this date will go directly into Clearing.

Record of Prior Acceptance (RPA)

RPA is an acceptance route used when a provider informs UCAS of applicants it has accepted outside of the normal application process (e.g. individuals who have applied directly to the provider).

Reporting groups

Ethnic group

High level grouping of ethnic origin as declared by the applicant: 'White', 'Black', 'Asian', 'Mixed', 'Other', 'Unknown'. Applicants who declare themselves as 'Unknown' ethnic origin are not reported in these tables, but are included in the associated csv data file.

POLAR3 quintile

Developed by HEFCE, POLAR3 classifies small areas across the UK into five groups according to their level of young participation in Higher Education. Each of these groups represents around 20 per cent of young people and is ranked from Quintile 1 (areas with the lowest young participation rates, considered as the most disadvantaged) to Quintile 5 (highest young participation rates, considered most advantaged). POLAR3 is based on the participation rates of young people between 2005 and 2009 who entered Higher Education between 2005-06 and 2010-11, therefore is most suitable for applicants aged 19 and under. These groups are assigned using the postcode declared by the applicant at the time of their application. If a UK postcode is invalid, considered unsafe for measurement or there is no link to Census geography possible then the applicant is not assigned to a quintile. Applicants with no POLAR3 quintile are not reported.

Sex

Sex as declared by the applicant.

SIMD 2016 quintile

Scottish index of multiple deprivation (SIMD) identifies small area concentrations of multiple deprivation across all of Scotland, providing a relative measure of deprivation amongst 6505 small areas (data zones) based on 7 socio-economic domains. These small areas are classified into five groups ranked from Quintile 1 (considered the most deprived) to Quintile 5 (considered least deprived), with equal populations in each quintile. Quintiles are assigned using the postcode declared by the applicant, applicants declaring invalid postcodes are classified as 'Not assigned' and are not reported.

SIMD is only defined for applicants domiciled in Scotland, therefore any applicants domiciled outside of Scotland cannot be assigned to an SIMD quintile and so are not reported for this measure.

SIMD is only reported for providers in Scotland. Application and entry rates by SIMD are reported in the 2017 End of Cycle Report and the 2017 cycle January deadline application rate report.

Statistics reported in the tables

All placed applicants

The number of applicants placed for entry into higher education at the provider through one of their choices, including any choices made through Extra, or via Adjustment, Clearing or RPA.

All placed applicants per 10,000 population

The number of total UK domiciled 18 year old placed applicants for entry into higher education at the provider divided by the number of UK 18 year olds in the population, multiplied by 10,000. This gives the number of 18 year olds, for every 10,000 in the population, that were placed at the provider through one of their choices, including any choices made through Extra, or via Adjustment, Clearing or RPA. It is an alternative way of expressing the entry rate to a provider. By referencing the underlying population this statistic shows how the number of placed applicants is changing in relation to the available pool of potential applicants and so gives the chance that somebody from the group will be placed at a provider.

This statistic is only reported for 18 year olds.

Average offer rate

The offer rate that you might expect if the predicted grades and subject choice of applicants were the only factors that influenced whether an applicant was made an offer by the provider. The average offer rate is calculated by dividing applicants according to their specific combination of grades (for A levels the best three predicted grades are used, for BTECs, International Baccalaureate and Scottish Highers and Advanced Highers, predicted grades along with any grades already achieved upon applying are used) and subject choice. For each combination the number of main scheme offers is divided by the number of main scheme applications, to give an overall offer rate. This is then multiplied by the number of applications made by the group for which the average offer rate is being calculated (for example POLAR3 quintile 1), to give an average number of offers for that group. These average number of offers are then added together across all combinations of predicted grade and subject and divided by the number of main scheme applications from the group to give the average offer rate.

The average offer rate does not attempt to control for any other factors that may play a part in the decision to make an offer, such as the subject of the qualifications studied, their relevance to a course, or the grade in each subject; higher numbers of A levels being studied; the exact profile of grades predicted; personal statements; teacher references; interviews; or any other criteria (such as work experience or portfolios) that may be part of the admissions decision.

This statistic is only reported for 18 year olds.

Contribution of group to the average offer rate

The way in which the average offer rate is defined means that the pattern of application and offers of a group (for example POLAR3 quintile 1) will always contribute, in part, to the average offer rate for that group. When this contribution is large, the average offer rate will mainly reflect the patterns for the group, meaning that the value of the average offer rate will be similar to the offer rate, the percentage point difference statistic will be small, and any real difference between the offer rate and what might be expected given the predicted grades and subject choices of the applicants will be difficult to detect.

Values of the contribution of group to the average offer rate range between 0 and 1. The closer the value is to 1 the greater the contribution a group makes to its own average offer rate.

This statistic is only reported for 18 year olds.

Placed June deadline applicants

An applicant who has been placed for entry into higher education at the provider through a June deadline application.

Placed June deadline applicants per 10,000 population

The number of UK domiciled 18 year old placed June deadline applicants at the provider divided by the number of UK 18 year olds in the population, multiplied by 10,000. This gives the number of 18 year olds, for every 10,000 in the population, that were placed at the provider through one of their June deadline applications. It is an alternative way of expressing the entry rate to a provider, but for placed June deadline applicants only. By referencing the underlying population this statistic shows how the number of placed June deadline applicants is changing in relation to the available pool of potential 18 year old applicants and so gives the chance that somebody from the group will be placed at a provider through a June deadline application.

This statistic is only reported for 18 year olds.

June deadline applications

An application (or choice) to a course in higher education to the provider that is made by the June 30 deadline. Each applicant can make up to five choices this way. The number of June deadline applications does not include choices made through the following routes: Clearing, Extra, Adjustment and RPAs. Applications made to October deadline courses received after the October deadline are not included in these statistics.

June deadline applicants

The number of applicants that made at least one application to the provider by the June 30 deadline.

June deadline applicants per 10,000 population

The number of UK domiciled 18 year old June deadline applicants to the provider divided by the number of UK 18 year olds in the population, multiplied by 10,000. This gives the number of 18 year olds, for every 10,000 in the population, who applied by the June 30 deadline. It is equivalent to the application rate. By referencing the underlying population this statistic shows how the number of June deadline applicants is changing in relation to the available pool of potential 18 year old applicants and so gives the chance that somebody from the group will apply to a provider by the June 30 deadline.

This statistic is only reported for 18 year olds.

Offers

An offer is defined as a provider's decision in response to an application to offer a place to an applicant, often subject to the applicant satisfying academic and/or other criteria, via a June deadline application (i.e. does not cover choices made through the following routes: Clearing, Extra, Adjustment and RPAs).

Offer rate

The number of offers made divided by the number of June deadline applications. This gives the proportion of all June deadline applications to the provider that received an offer.

Percentage point difference between offer rate and average offer rate

The offer rate minus the average offer rate.

The percentage point difference can be compared to the expected range of statistical variation resulting from the calculation of the average offer rate using the Average Offer Rate Lookup Table. Where the value of the percentage point difference lies outside of this range, the percentage point difference may be considered to represent a real difference between the offer rate and the average offer rate.

Other definitions

Age

This analysis uses country-specific age definitions that align with the cut off points for school and college cohorts within the different administrations of the UK. For England and Wales, ages are defined on the 31 August, for Northern Ireland on the 1 July and for Scotland on the 28 February the following year. Defining ages in this way matches the assignment of children to school cohorts. For applicants outside of the UK a cohort cut off of 31 August has been used. Numbers for applicants aged 17 and under are included in the tables that report numbers for all age groups. Providers in Scotland typically receive a higher proportion of applicants aged 17 and under compared to providers elsewhere in the UK.

Provider

A higher education provider - a university or college.

UK domiciled

Declared area of permanent residence within England, Northern Ireland, Scotland and Wales. Applicants from the Channel Islands and Isle of Man are not included.