

S78 The University of Strathclyde

Cycle years: 2012 - 2017

Cycle Reference Point: End of Cycle

Applicant coverage: UK domiciled

Reporting groups: Sex, POLAR3, SIMD 2016, ethnic group

Applicant statistics: June deadline applicants, placed June deadline applicants, all placed applicants, June deadline applicants per 10,000 population, placed June deadline applicants per 10,000 population, all placed applicants per 10,000 population

Application statistics: June deadline applications, offers, offer rate, average offer rate, percentage point difference between offer rate and average offer rate, contribution of group to the average offer rate

Non-disclosure controls: To avoid the disclosure of information about any individual the following measures are taken

- Applicants, placed applicants, applications and offers are rounded to the nearest 5.
- Applicants/placed applicants per 10,000 population figures are reported as 0 if the applicant/placed applicant figures are rounded to 0.
- All statistics related to the offer rate are not reported when the number of applications for a group is less than 10. The percentage point difference between the offer rate and the average offer rate is not reported when the number of applications for a group is less than 50.
- Offer rates are reported as 0% if there are fewer than 5 offers, and 100% if the number of offers is within 5 of the number of applications. When the offer rate is reported as 0% or 100%, it is reported in italics.

Contents:

18 year old applicants:	P.1
18 year old applications:	P.2
18 year old applicants by sex:	P.3
18 year old applications by sex:	P.4
18 year old applicants by POLAR3 quintile:	P.7
18 year old applications by POLAR3 quintile:	P.8
18 year old, Scotland domiciled applicants by SIMD 2016 quintile:	P.11
18 year old, Scotland domiciled applications by SIMD 2016 quintile:	P.12
18 year old applicants by ethnic group:	P.15
18 year old applications by ethnic group:	P.16
Applicants (all ages):	P.19
Applications (all ages):	P.20
Applicants (all ages) by sex:	P.21
Applications (all ages) by sex:	P.22
Applicants (all ages) by POLAR3 quintile:	P.23
Applications (all ages) by POLAR3 quintile:	P.24
Scotland domiciled applicants (all ages) by SIMD 2016 quintile:	P.25
Scotland domiciled applications (all ages) by SIMD 2016 quintile:	P.26
Applicants (all ages) by ethnic group:	P.27
Applications (all ages) by ethnic group:	P.28

P.1 18 year old applicants

Statistic	2012	2013	2014	2015	2016	2017
June deadline applicants	6,910	6,710	7,420	8,030	8,265	8,715
Placed June deadline applicants	1,710	1,830	1,995	2,080	2,035	1,930
All placed applicants	1,795	1,915	2,060	2,155	2,100	2,010
June deadline applicants per 10,000 population	89.3	88.2	98.5	104.8	110.3	117.6
Placed June deadline applicants per 10,000	22.1	24.0	26.5	27.1	27.1	26.1
All placed applicants per 10,000 population	23.2	25.2	27.4	28.1	28.0	27.1

P.2 18 year old applications

Statistic	2012	2013	2014	2015	2016	2017
June deadline applications	9,290	9,065	10,200	11,250	11,385	11,740
Offers	6,295	6,775	7,310	7,705	7,260	7,035
Offer rate	67.8%	74.8%	71.7%	68.5%	63.8%	59.9%

P.3 18 year old applicants by sex

Statistic	Sex	2012	2013	2014	2015	2016	2017
June deadline applicants	Men	3,270	3,310	3,500	3,820	3,730	3,975
	Women	3,640	3,405	3,920	4,210	4,535	4,740
Placed June deadline applicants	Men	840	960	1,005	1,030	975	975
	Women	870	870	995	1,050	1,060	960
All placed applicants	Men	890	1,015	1,040	1,075	1,010	1,005
	Women	905	900	1,020	1,080	1,095	1,000
June deadline applicants per 10,000 population	Men	82.5	84.8	90.4	97.3	97.1	104.7
	Women	96.5	91.8	107.1	112.7	124.2	131.2
Placed June deadline applicants per 10,000 population	Men	21.2	24.6	25.9	26.2	25.3	25.6
	Women	23.1	23.5	27.1	28.1	29.0	26.6
All placed applicants per 10,000 population	Men	22.5	26.0	26.9	27.4	26.3	26.5
	Women	24.0	24.3	27.9	28.9	29.9	27.8

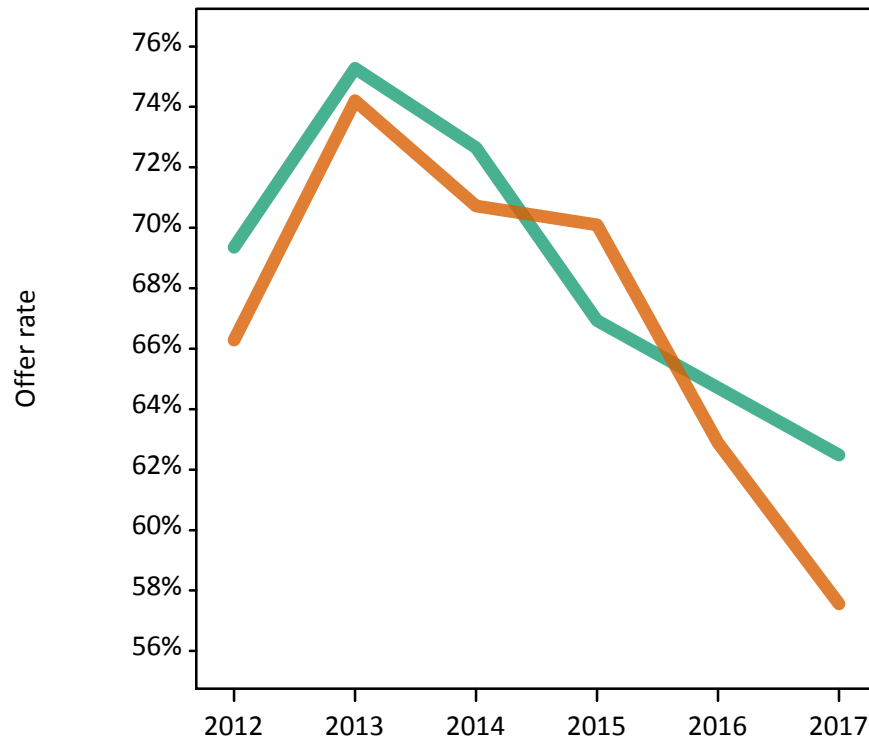
P.4 18 year old applications by sex

Statistic	Sex	2012	2013	2014	2015	2016	2017
June deadline applications	Men	4,535	4,645	5,075	5,705	5,420	5,660
	Women	4,750	4,420	5,125	5,545	5,965	6,080
Offers	Men	3,145	3,495	3,685	3,820	3,510	3,535
	Women	3,150	3,280	3,625	3,885	3,750	3,500
Offer rate	Men	69.4%	75.3%	72.6%	66.9%	64.7%	62.5%
	Women	66.3%	74.2%	70.7%	70.1%	62.9%	57.6%
Average offer rate	Men	70.3%	76.2%	74.2%	69.3%	66.3%	65.1%
	Women	65.4%	73.2%	69.2%	67.7%	61.4%	55.2%
Percentage point difference between offer rate and average offer rate	Men	-0.9	-0.9	-1.5	-2.3	-1.6	-2.6
	Women	0.9	1.0	1.5	2.4	1.5	2.4
Contribution of group to the average offer rate	Men	0.634	0.647	0.641	0.641	0.619	0.634
	Women	0.650	0.629	0.644	0.631	0.654	0.659

P.5 18 year old offer rate by sex

Note: The line for a group is not plotted when that group made fewer than 10 applications in any of the years from 2012-2017.

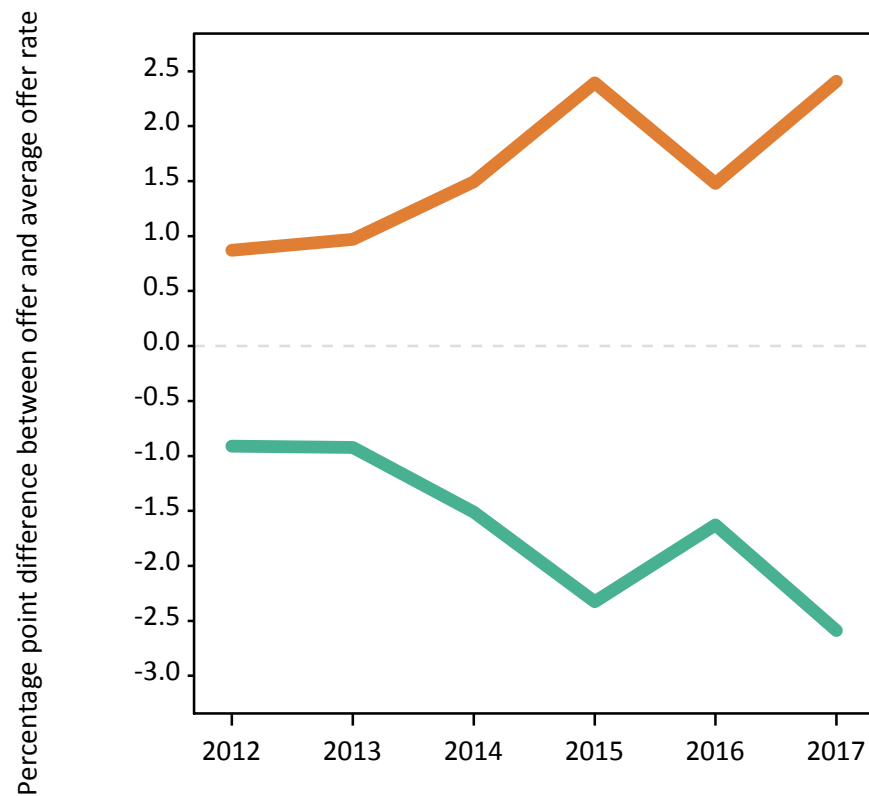
Men
Women



P.6 Percentage point difference between 18 year old offer rate and average offer rate by sex

Note: The line for a group is not plotted when that group made fewer than 50 applications in any of the years from 2012-2017.

Men
Women



P.7 18 year old applicants by POLAR3 quintile

Statistic	POLAR3 quintile	2012	2013	2014	2015	2016	2017
June deadline applicants	Quintile 1	265	255	360	345	385	450
	Quintile 2	715	710	770	925	895	970
	Quintile 3	1,120	1,015	1,155	1,190	1,330	1,330
	Quintile 4	1,505	1,515	1,695	1,855	1,880	1,985
	Quintile 5	3,300	3,210	3,430	3,705	3,755	3,955
Placed June deadline applicants	Quintile 1	50	55	75	70	75	100
	Quintile 2	150	155	160	215	200	205
	Quintile 3	265	265	295	270	310	295
	Quintile 4	355	405	420	455	460	425
	Quintile 5	885	945	1,045	1,065	990	900
All placed applicants	Quintile 1	55	55	80	75	80	100
	Quintile 2	165	165	170	225	215	215
	Quintile 3	275	275	300	285	320	310
	Quintile 4	370	420	430	475	475	440
	Quintile 5	930	1,000	1,085	1,090	1,015	935
June deadline applicants per 10,000 population	Quintile 1	18.5	18.4	25.7	24.8	28.6	33.9
	Quintile 2	47.6	48.3	52.6	62.3	62.0	68.4
	Quintile 3	72.6	66.4	76.7	77.6	88.5	89.3
	Quintile 4	94.9	96.8	109.9	118.4	121.8	129.9
	Quintile 5	196.3	194.1	210.2	221.2	227.3	241.0
Placed June deadline applicants per 10,000 population	Quintile 1	3.7	3.9	5.2	5.1	5.6	7.5
	Quintile 2	10.1	10.7	10.9	14.6	13.8	14.5
	Quintile 3	17.2	17.3	19.7	17.6	20.6	19.9
	Quintile 4	22.4	25.9	27.3	28.9	29.9	27.7
	Quintile 5	52.6	57.3	64.2	63.6	59.9	54.9
All placed applicants per 10,000 population	Quintile 1	3.8	4.0	5.6	5.3	5.8	7.5
	Quintile 2	10.9	11.2	11.5	15.2	14.7	15.1
	Quintile 3	17.9	18.1	20.0	18.6	21.4	20.9
	Quintile 4	23.4	26.8	27.9	30.5	30.8	28.9
	Quintile 5	55.3	60.4	66.5	65.1	61.4	57.0

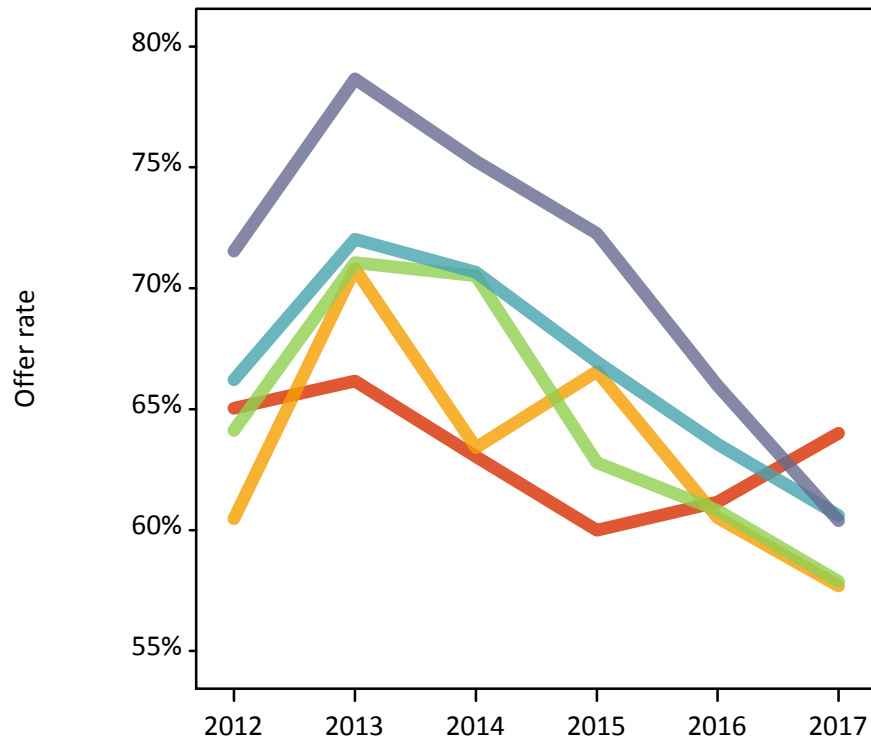
P.8 18 year old applications by POLAR3 quintile

Statistic	POLAR3 quintile	2012	2013	2014	2015	2016	2017
June deadline applications	Quintile 1	350	330	470	450	500	590
	Quintile 2	980	940	1,065	1,285	1,220	1,260
	Quintile 3	1,505	1,395	1,585	1,670	1,800	1,780
	Quintile 4	1,995	2,015	2,305	2,605	2,625	2,700
	Quintile 5	4,450	4,365	4,760	5,235	5,215	5,385
Offers	Quintile 1	225	215	295	270	305	375
	Quintile 2	590	665	675	855	735	730
	Quintile 3	965	990	1,115	1,050	1,095	1,030
	Quintile 4	1,320	1,450	1,630	1,745	1,670	1,635
	Quintile 5	3,185	3,435	3,585	3,785	3,440	3,250
Offer rate	Quintile 1	65.0%	66.2%	63.0%	60.0%	61.2%	64.0%
	Quintile 2	60.5%	70.8%	63.4%	66.6%	60.5%	57.7%
	Quintile 3	64.1%	71.1%	70.5%	62.8%	60.8%	57.9%
	Quintile 4	66.2%	72.0%	70.7%	67.0%	63.6%	60.6%
	Quintile 5	71.5%	78.7%	75.3%	72.3%	66.0%	60.4%
Average offer rate	Quintile 1	66.7%	67.4%	66.9%	65.5%	62.5%	58.8%
	Quintile 2	63.6%	72.0%	67.9%	67.3%	61.6%	56.9%
	Quintile 3	66.6%	73.5%	71.0%	66.2%	62.2%	58.9%
	Quintile 4	68.0%	73.7%	71.1%	68.6%	65.1%	60.9%
	Quintile 5	69.1%	76.8%	73.5%	69.7%	64.4%	60.7%
Percentage point difference between offer rate and average offer rate	Quintile 1	-1.7	-1.2	-3.9	-5.5	-1.3	5.2
	Quintile 2	-3.1	-1.2	-4.5	-0.7	-1.1	0.8
	Quintile 3	-2.5	-2.4	-0.4	-3.4	-1.4	-1.0
	Quintile 4	-1.8	-1.7	-0.4	-1.6	-1.5	-0.3
	Quintile 5	2.4	1.9	1.7	2.5	1.6	-0.3
Contribution of group to the average offer rate	Quintile 1	0.093	0.117	0.123	0.099	0.121	0.128
	Quintile 2	0.155	0.150	0.155	0.160	0.150	0.159
	Quintile 3	0.204	0.192	0.188	0.188	0.200	0.194
	Quintile 4	0.253	0.257	0.260	0.265	0.265	0.272
	Quintile 5	0.513	0.514	0.499	0.498	0.490	0.496

P.9 18 year old offer rate by POLAR3 quintile

Note: The line for a group is not plotted when that group made fewer than 10 applications in any of the years from 2012-2017.

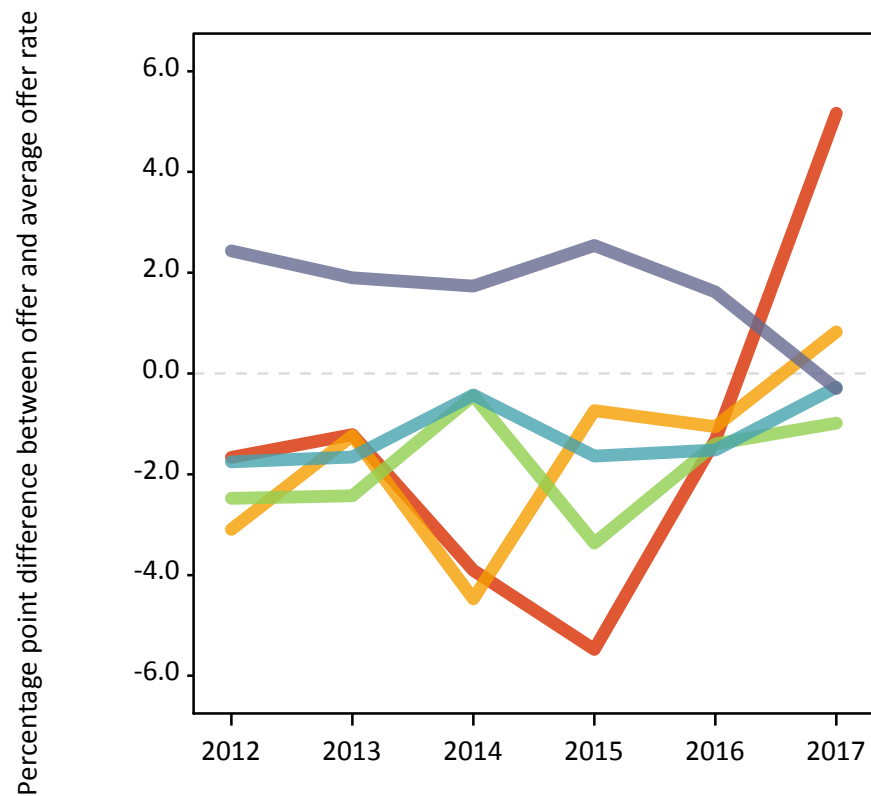
- Quintile 1
- Quintile 2
- Quintile 3
- Quintile 4
- Quintile 5



P.10 Percentage point difference between 18 year old offer rate and average offer rate by POLAR3 quintile

Note: The line for a group is not plotted when that group made fewer than 50 applications in any of the years from 2012-2017.

- Quintile 1
- Quintile 2
- Quintile 3
- Quintile 4
- Quintile 5



P.11 18 year old, Scotland domiciled applicants by SIMD 2016 quintile

Statistic	SIMD quintile	2012	2013	2014	2015	2016	2017
June deadline applicants	Quintile 1	625	620	795	780	875	870
	Quintile 2	870	870	960	990	1,045	1,070
	Quintile 3	1,180	1,160	1,175	1,335	1,315	1,290
	Quintile 4	1,500	1,450	1,615	1,740	1,720	1,750
	Quintile 5	2,305	2,185	2,350	2,620	2,610	2,620
Placed June deadline applicants	Quintile 1	140	140	185	195	205	215
	Quintile 2	210	245	235	250	270	290
	Quintile 3	315	305	315	340	330	290
	Quintile 4	385	420	475	475	440	375
	Quintile 5	625	680	750	780	725	650
All placed applicants	Quintile 1	150	145	195	200	210	220
	Quintile 2	225	250	240	260	280	295
	Quintile 3	325	325	325	345	335	305
	Quintile 4	400	435	490	485	445	385
	Quintile 5	660	710	770	795	740	670
June deadline applicants per 10,000 population	Quintile 1	491.8	486.7	624.2	633.3	724.3	752.4
	Quintile 2	735.5	738.3	816.9	867.7	948.3	999.4
	Quintile 3	986.5	981.5	1,005.2	1,142.1	1,166.8	1,186.2
	Quintile 4	1,205.0	1,173.9	1,316.3	1,446.8	1,437.0	1,502.6
	Quintile 5	1,779.3	1,697.0	1,830.9	2,057.3	2,087.1	2,093.6
Placed June deadline applicants per 10,000 population	Quintile 1	111.5	111.3	145.6	156.7	168.0	186.4
	Quintile 2	178.2	206.5	200.6	218.2	245.2	272.5
	Quintile 3	262.5	256.4	270.1	288.9	294.8	267.1
	Quintile 4	309.7	339.0	387.7	394.3	367.2	323.3
	Quintile 5	481.3	529.1	583.0	612.7	581.6	518.4
All placed applicants per 10,000 population	Quintile 1	118.6	112.1	152.7	163.2	174.7	189.0
	Quintile 2	190.8	213.3	205.7	227.9	253.4	276.2
	Quintile 3	272.5	273.3	276.1	296.6	299.3	279.1
	Quintile 4	320.1	352.7	397.5	401.8	373.0	330.2
	Quintile 5	509.9	551.7	599.4	624.5	591.2	534.4

P.12 18 year old, Scotland domiciled applications by SIMD 2016 quintile

Statistic	SIMD quintile	2012	2013	2014	2015	2016	2017
June deadline applications	Quintile 1	885	880	1,135	1,125	1,260	1,220
	Quintile 2	1,210	1,190	1,355	1,455	1,485	1,495
	Quintile 3	1,580	1,580	1,630	1,870	1,845	1,795
	Quintile 4	2,020	2,005	2,255	2,505	2,415	2,460
	Quintile 5	3,150	2,965	3,285	3,720	3,650	3,605
Offers	Quintile 1	495	580	705	680	710	730
	Quintile 2	775	845	910	910	925	925
	Quintile 3	1,050	1,125	1,130	1,200	1,060	970
	Quintile 4	1,395	1,480	1,630	1,700	1,475	1,305
	Quintile 5	2,250	2,360	2,470	2,680	2,430	2,130
Offer rate	Quintile 1	56.2%	66.2%	62.0%	60.4%	56.4%	59.7%
	Quintile 2	64.1%	71.1%	67.1%	62.6%	62.3%	61.8%
	Quintile 3	66.5%	71.3%	69.5%	64.3%	57.3%	54.1%
	Quintile 4	69.0%	73.6%	72.3%	67.9%	61.1%	52.9%
	Quintile 5	71.5%	79.6%	75.2%	72.1%	66.5%	59.0%
Average offer rate	Quintile 1	63.0%	69.6%	65.9%	63.7%	58.1%	54.9%
	Quintile 2	66.8%	72.4%	69.8%	65.0%	60.5%	55.4%
	Quintile 3	66.6%	72.1%	69.9%	66.0%	61.8%	58.3%
	Quintile 4	68.0%	74.7%	70.8%	68.7%	62.5%	57.3%
	Quintile 5	69.1%	76.9%	73.5%	68.8%	63.4%	58.3%
Percentage point difference between offer rate and average offer rate	Quintile 1	-6.8	-3.4	-3.8	-3.3	-1.8	4.9
	Quintile 2	-2.7	-1.3	-2.7	-2.4	1.9	6.4
	Quintile 3	-0.1	-0.8	-0.4	-1.7	-4.5	-4.2
	Quintile 4	0.9	-1.0	1.4	-0.8	-1.5	-4.4
	Quintile 5	2.4	2.6	1.7	3.3	3.1	0.8
Contribution of group to the average offer rate	Quintile 1	0.132	0.130	0.155	0.131	0.150	0.148
	Quintile 2	0.161	0.162	0.161	0.161	0.160	0.164
	Quintile 3	0.198	0.201	0.192	0.191	0.188	0.188
	Quintile 4	0.241	0.246	0.250	0.249	0.241	0.253
	Quintile 5	0.378	0.375	0.365	0.375	0.367	0.369

P.13 18 year old, Scotland domiciled offer rate by SIMD 2016 quintile

Note: The line for a group is not plotted when that group made fewer than 10 applications in any of the years from 2012-2017.

- Quintile 1
- Quintile 2
- Quintile 3
- Quintile 4
- Quintile 5



P.14 Percentage point difference between 18 year old, Scotland domiciled offer rate and average offer rate by SIMD 2016 quintile

Note: The line for a group is not plotted when that group made fewer than 50 applications in any of the years from 2012-2017.

- Quintile 1
- Quintile 2
- Quintile 3
- Quintile 4
- Quintile 5



P.15 18 year old applicants by ethnic group

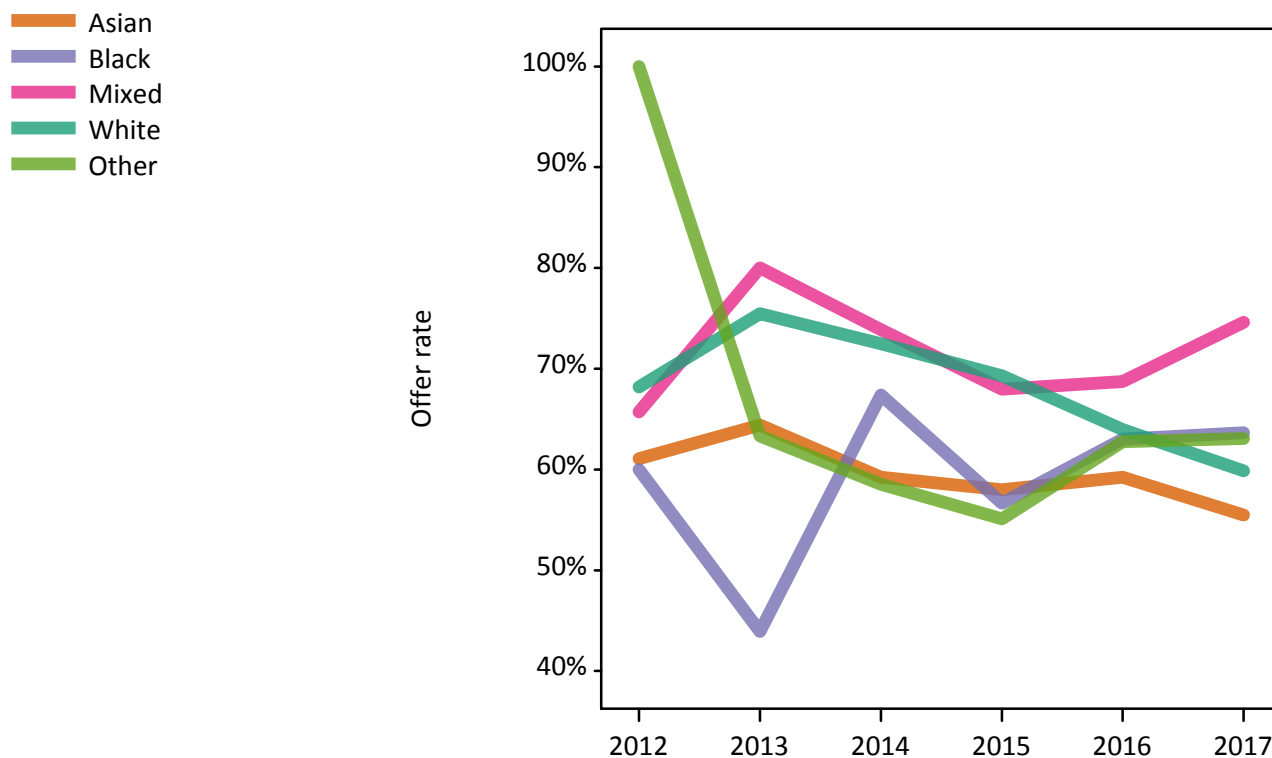
Statistic	Ethnic group	2012	2013	2014	2015	2016	2017
June deadline applicants	Asian	350	335	395	420	465	500
	Black	35	35	40	55	65	100
	Mixed	80	90	110	140	150	160
	White	6,415	6,215	6,825	7,365	7,495	7,865
	Other	15	25	35	30	40	45
Placed June deadline applicants	Asian	65	80	95	95	105	90
	Black	5	5	5	10	10	10
	Mixed	20	20	25	30	30	40
	White	1,615	1,720	1,860	1,935	1,870	1,770
	Other	0	5	10	5	10	10
All placed applicants	Asian	70	85	100	105	110	100
	Black	10	5	5	10	15	15
	Mixed	20	25	25	35	35	40
	White	1,690	1,795	1,915	1,995	1,925	1,830
	Other	0	5	10	10	10	10
June deadline applicants per 10,000 population	Asian	54.0	50.9	58.5	59.3	64.5	68.2
	Black	13.1	12.1	12.9	16.6	20.1	32.1
	Mixed	29.9	32.5	37.5	44.8	47.4	49.5
	White	99.4	98.8	110.6	118.2	123.9	132.5
	Other	19.2	25.4	35.5	33.2	41.2	45.6
Placed June deadline applicants per 10,000 population	Asian	9.7	12.0	14.2	13.1	14.9	12.5
	Black	2.5	1.3	1.3	3.5	3.2	3.8
	Mixed	7.7	7.8	8.3	10.4	10.2	12.8
	White	25.0	27.3	30.1	31.1	30.9	29.8
	Other	0.0	3.3	9.7	7.3	8.0	9.7
All placed applicants per 10,000 population	Asian	10.8	13.2	15.0	14.7	15.6	13.6
	Black	3.2	1.3	1.3	3.8	4.2	5.4
	Mixed	8.1	8.5	8.7	11.4	10.5	13.1
	White	26.2	28.5	31.1	32.0	31.8	30.9
	Other	0.0	3.3	10.7	9.3	10.0	10.7

P.16 18 year old applications by ethnic group

Statistic	Ethnic group	2012	2013	2014	2015	2016	2017
June deadline applications	Asian	490	475	550	615	695	710
	Black	45	40	45	60	75	120
	Mixed	105	110	135	180	180	195
	White	8,615	8,390	9,405	10,325	10,320	10,600
	Other	20	30	40	50	50	65
Offers	Asian	300	305	325	355	410	395
	Black	25	20	30	35	45	75
	Mixed	70	90	100	120	125	145
	White	5,875	6,330	6,815	7,155	6,600	6,350
	Other	15	20	25	25	30	40
Offer rate	Asian	61.1%	64.4%	59.2%	58.0%	59.2%	55.5%
	Black	60.0%	43.9%	67.4%	56.7%	63.0%	63.6%
	Mixed	65.7%	80.0%	73.9%	68.0%	68.7%	74.6%
	White	68.2%	75.5%	72.5%	69.3%	64.0%	59.9%
	Other	100.0%	63.3%	58.5%	55.1%	62.7%	63.1%
Average offer rate	Asian	67.6%	70.8%	66.2%	65.3%	62.0%	62.8%
	Black	65.6%	59.8%	68.7%	63.4%	59.2%	57.1%
	Mixed	68.6%	80.3%	74.8%	68.0%	68.3%	65.0%
	White	67.8%	75.0%	72.0%	68.7%	63.8%	59.6%
	Other	79.6%	76.1%	59.2%	68.0%	67.7%	65.5%
Percentage point difference between offer rate and average offer rate	Asian	-6.5	-6.4	-7.0	-7.3	-2.7	-7.3
	Black	N/A	N/A	N/A	-6.7	3.8	6.5
	Mixed	-2.9	-0.3	-0.9	-0.0	0.4	9.6
	White	0.4	0.5	0.4	0.6	0.2	0.2
	Other	N/A	N/A	N/A	N/A	-4.9	-2.5
Contribution of group to the average offer rate	Asian	0.121	0.149	0.124	0.136	0.132	0.135
	Black	0.067	0.145	0.155	0.134	0.144	0.139
	Mixed	0.075	0.107	0.082	0.102	0.094	0.100
	White	0.934	0.934	0.929	0.926	0.916	0.914
	Other	0.070	0.077	0.136	0.102	0.117	0.173

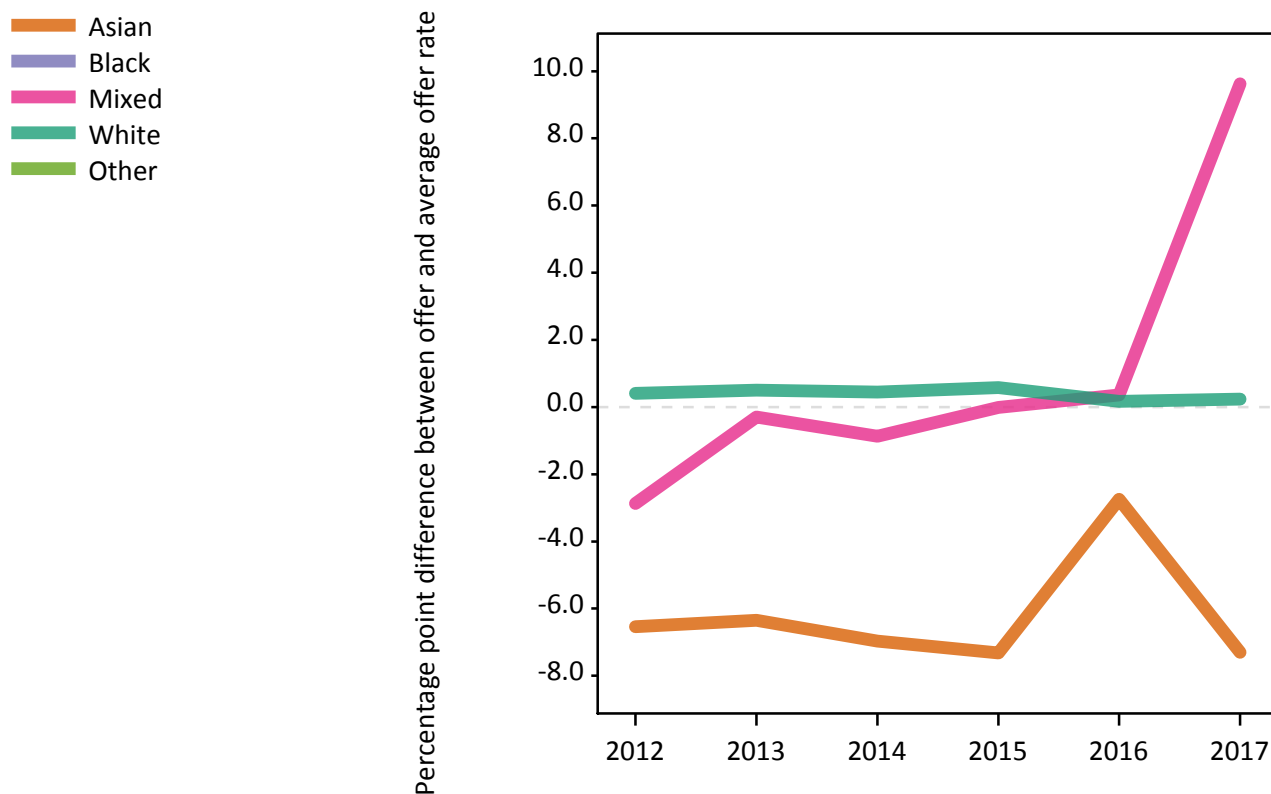
P.17 18 year old offer rate by ethnic group

Note: The line for a group is not plotted when that group made fewer than 10 applications in any of the years from 2012-2017.



P.18 Percentage point difference between 18 year old offer rate and average offer rate by ethnic group

Note: The line for a group is not plotted when that group made fewer than 50 applications in any of the years from 2012-2017.



P.19 Applicants (all ages)

Statistic	2012	2013	2014	2015	2016	2017
June deadline applicants	12,040	11,985	13,185	17,105	18,250	19,130
Placed June deadline applicants	2,465	2,620	2,920	3,695	3,755	3,705
All placed applicants	2,630	2,795	3,065	3,885	3,935	3,900

P.20 Applications (all ages)

Statistic	2012	2013	2014	2015	2016	2017
June deadline applications	15,640	15,715	17,825	22,675	24,050	25,035
Offers	8,840	9,855	10,595	11,815	11,500	11,295
Offer rate	56.5%	62.7%	59.4%	52.1%	47.8%	45.1%

P.21 Applicants (all ages) by sex

Statistic	Sex	2012	2013	2014	2015	2016	2017
June deadline applicants	Men	5,730	5,920	6,280	7,575	7,890	8,035
	Women	6,310	6,065	6,905	9,530	10,360	11,095
Placed June deadline applicants	Men	1,235	1,400	1,470	1,685	1,705	1,685
	Women	1,230	1,220	1,450	2,010	2,055	2,020
All placed applicants	Men	1,345	1,500	1,555	1,780	1,795	1,765
	Women	1,285	1,295	1,510	2,105	2,140	2,135

P.22 Applications (all ages) by sex

Statistic	Sex	2012	2013	2014	2015	2016	2017
June deadline applications	Men	7,695	8,060	8,875	10,650	10,930	11,080
	Women	7,945	7,655	8,950	12,025	13,125	13,955
Offers	Men	4,530	5,190	5,420	5,705	5,515	5,450
	Women	4,305	4,665	5,175	6,110	5,980	5,840
Offer rate	Men	58.9%	64.4%	61.1%	53.5%	50.5%	49.2%
	Women	54.2%	61.0%	57.8%	50.8%	45.6%	41.8%

P.23 Applicants (all ages) by POLAR3 quintile

Statistic	POLAR3 quintile	2012	2013	2014	2015	2016	2017
June deadline applicants	Quintile 1	620	650	775	1,005	1,085	1,190
	Quintile 2	1,480	1,480	1,595	2,180	2,235	2,430
	Quintile 3	2,020	1,895	2,160	2,735	3,045	3,170
	Quintile 4	2,625	2,690	2,990	3,850	4,155	4,375
	Quintile 5	5,270	5,240	5,640	7,305	7,685	7,920
Placed June deadline applicants	Quintile 1	105	90	130	180	190	210
	Quintile 2	255	260	280	410	435	460
	Quintile 3	385	390	440	535	605	605
	Quintile 4	530	580	635	810	825	830
	Quintile 5	1,185	1,290	1,435	1,755	1,695	1,595
All placed applicants	Quintile 1	115	95	140	190	200	220
	Quintile 2	275	275	295	435	455	475
	Quintile 3	405	415	460	565	640	650
	Quintile 4	565	605	660	860	855	870
	Quintile 5	1,260	1,395	1,510	1,830	1,775	1,675

P.24 Applications (all ages) by POLAR3 quintile

Statistic	POLAR3 quintile	2012	2013	2014	2015	2016	2017
June deadline applications	Quintile 1	790	820	1,015	1,295	1,385	1,515
	Quintile 2	1,955	1,915	2,140	2,840	2,915	3,120
	Quintile 3	2,590	2,480	2,930	3,625	3,980	4,100
	Quintile 4	3,365	3,520	4,015	5,065	5,500	5,720
	Quintile 5	6,905	6,940	7,695	9,815	10,215	10,525
Offers	Quintile 1	405	415	495	550	630	695
	Quintile 2	960	1,090	1,115	1,350	1,315	1,315
	Quintile 3	1,380	1,470	1,690	1,735	1,820	1,760
	Quintile 4	1,855	2,105	2,350	2,605	2,575	2,590
	Quintile 5	4,225	4,745	4,930	5,560	5,135	4,905
Offer rate	Quintile 1	51.1%	50.9%	48.9%	42.5%	45.7%	45.7%
	Quintile 2	49.2%	56.9%	52.1%	47.5%	45.2%	42.2%
	Quintile 3	53.2%	59.3%	57.6%	47.8%	45.7%	42.9%
	Quintile 4	55.1%	59.8%	58.5%	51.4%	46.8%	45.3%
	Quintile 5	61.2%	68.3%	64.1%	56.6%	50.3%	46.6%

P.25 Scotland domiciled applicants (all ages) by SIMD 2016 quintile

Statistic	SIMD quintile	2012	2013	2014	2015	2016	2017
June deadline applicants	Quintile 1	1,675	1,685	1,955	2,425	2,655	2,820
	Quintile 2	1,735	1,815	1,940	2,480	2,650	2,770
	Quintile 3	2,090	2,090	2,165	2,915	3,115	3,030
	Quintile 4	2,400	2,390	2,700	3,525	3,625	3,770
	Quintile 5	3,460	3,345	3,590	4,745	4,935	4,985
Placed June deadline applicants	Quintile 1	295	280	370	480	515	565
	Quintile 2	330	375	375	495	570	625
	Quintile 3	445	425	480	595	620	575
	Quintile 4	535	595	650	810	780	710
	Quintile 5	810	890	985	1,210	1,135	1,055
All placed applicants	Quintile 1	320	290	390	505	540	585
	Quintile 2	355	390	390	520	595	640
	Quintile 3	470	460	500	625	645	605
	Quintile 4	565	625	680	840	805	740
	Quintile 5	865	950	1,030	1,260	1,165	1,100

P.26 Scotland domiciled applications (all ages) by SIMD 2016 quintile

Statistic	SIMD quintile	2012	2013	2014	2015	2016	2017
June deadline applications	Quintile 1	2,225	2,240	2,690	3,240	3,625	3,815
	Quintile 2	2,300	2,375	2,670	3,370	3,545	3,670
	Quintile 3	2,685	2,755	2,975	3,845	4,130	4,025
	Quintile 4	3,130	3,180	3,685	4,755	4,840	5,035
	Quintile 5	4,580	4,470	4,945	6,395	6,575	6,640
Offers	Quintile 1	975	1,150	1,315	1,380	1,525	1,610
	Quintile 2	1,205	1,340	1,430	1,520	1,625	1,635
	Quintile 3	1,500	1,655	1,680	1,870	1,715	1,610
	Quintile 4	1,870	2,080	2,275	2,510	2,245	2,040
	Quintile 5	2,865	3,130	3,265	3,785	3,430	3,070
Offer rate	Quintile 1	43.7%	51.2%	48.8%	42.6%	42.0%	42.3%
	Quintile 2	52.4%	56.4%	53.7%	45.1%	45.8%	44.5%
	Quintile 3	55.9%	60.1%	56.4%	48.6%	41.5%	39.9%
	Quintile 4	59.8%	65.4%	61.7%	52.8%	46.4%	40.5%
	Quintile 5	62.6%	70.0%	66.0%	59.2%	52.1%	46.3%

P.27 Applicants (all ages) by ethnic group

Statistic	Ethnic group	2012	2013	2014	2015	2016	2017
June deadline applicants	Asian	705	745	820	940	1,060	1,090
	Black	215	195	210	255	275	325
	Mixed	170	170	190	290	330	355
	White	10,860	10,760	11,835	15,405	16,320	17,095
	Other	50	65	80	105	125	135
Placed June deadline applicants	Asian	115	135	155	180	190	180
	Black	15	15	20	30	30	35
	Mixed	30	35	40	55	55	65
	White	2,290	2,415	2,680	3,390	3,440	3,370
	Other	5	10	15	25	20	25
All placed applicants	Asian	130	145	170	205	205	200
	Black	20	15	20	35	40	45
	Mixed	35	40	45	60	60	70
	White	2,425	2,560	2,805	3,545	3,575	3,525
	Other	10	10	15	30	20	25

P.28 Applications (all ages) by ethnic group

Statistic	Ethnic group	2012	2013	2014	2015	2016	2017
June deadline applications	Asian	950	985	1,125	1,305	1,500	1,530
	Black	255	220	240	300	320	395
	Mixed	205	210	235	395	425	450
	White	14,110	14,150	16,065	20,400	21,445	22,325
	Other	60	85	95	160	175	175
Offers	Asian	465	540	545	615	650	650
	Black	75	75	90	85	120	165
	Mixed	115	130	140	205	195	210
	White	8,140	9,025	9,740	10,795	10,365	10,090
	Other	30	50	45	65	80	85
Offer rate	Asian	48.8%	54.6%	48.5%	47.2%	43.4%	42.6%
	Black	29.0%	34.2%	37.5%	28.4%	37.0%	42.2%
	Mixed	55.3%	61.3%	59.4%	51.8%	45.7%	46.6%
	White	57.7%	63.8%	60.6%	52.9%	48.3%	45.2%
	Other	46.8%	56.5%	45.8%	41.5%	45.7%	49.7%

Technical Notes and Definitions

UCAS undergraduate scheme

Adjustment

Adjustment allows applicants who have met and exceeded the terms of their conditional firm offer to seek and find a place at another provider whilst keeping their place at their original firm choice provider.

Clearing

Clearing is a route for applicants that are not placed and holding no offers to find a place on courses with vacancies.

Cycle year

The UCAS application cycle which runs from September to October the following year. For example the 2017 cycle runs from September 2016 through to October 2017.

End of cycle

The point in the cycle to which the numbers in this report refer, and the point at which the cycle is closed such that no more applications or offers can be made, and no more applicants can be placed. Numbers reported at the end of cycle exclude information on a small number of applicants who cancelled during the cycle.

Extra

Applicants who are unsuccessful in obtaining an offer or decline all offers may be eligible to apply through Extra, where they can apply to one further course at a time. Extra operates from 25 February until early July. It provides applicants who are eligible the possibility of obtaining an offer before exam results are published and Clearing starts.

June 30 deadline

The deadline for main scheme applications. Applicants who apply after this date will go directly into Clearing.

Record of Prior Acceptance (RPA)

RPA is an acceptance route used when a provider informs UCAS of applicants it has accepted outside of the normal application process (e.g. individuals who have applied directly to the provider).

Reporting groups

Ethnic group

High level grouping of ethnic origin as declared by the applicant: 'White', 'Black', 'Asian', 'Mixed', 'Other', 'Unknown'. Applicants who declare themselves as 'Unknown' ethnic origin are not reported in these tables, but are included in the associated csv data file.

POLAR3 quintile

Developed by HEFCE, POLAR3 classifies small areas across the UK into five groups according to their level of young participation in Higher Education. Each of these groups represents around 20 per cent of young people and is ranked from Quintile 1 (areas with the lowest young participation rates, considered as the most disadvantaged) to Quintile 5 (highest young participation rates, considered most advantaged). POLAR3 is based on the participation rates of young people between 2005 and 2009 who entered Higher Education between 2005-06 and 2010-11, therefore is most suitable for applicants aged 19 and under. These groups are assigned using the postcode declared by the applicant at the time of their application. If a UK postcode is invalid, considered unsafe for measurement or there is no link to Census geography possible then the applicant is not assigned to a quintile. Applicants with no POLAR3 quintile are not reported.

Sex

Sex as declared by the applicant.

SIMD 2016 quintile

Scottish index of multiple deprivation (SIMD) identifies small area concentrations of multiple deprivation across all of Scotland, providing a relative measure of deprivation amongst 6505 small areas (data zones) based on 7 socio-economic domains. These small areas are classified into five groups ranked from Quintile 1 (considered the most deprived) to Quintile 5 (considered least deprived), with equal populations in each quintile. Quintiles are assigned using the postcode declared by the applicant, applicants declaring invalid postcodes are classified as 'Not assigned' and are not reported.

SIMD is only defined for applicants domiciled in Scotland, therefore any applicants domiciled outside of Scotland cannot be assigned to an SIMD quintile and so are not reported for this measure.

SIMD is only reported for providers in Scotland. Application and entry rates by SIMD are reported in the 2017 End of Cycle Report and the 2017 cycle January deadline application rate report.

Statistics reported in the tables

All placed applicants

The number of applicants placed for entry into higher education at the provider through one of their choices, including any choices made through Extra, or via Adjustment, Clearing or RPA.

All placed applicants per 10,000 population

The number of total UK domiciled 18 year old placed applicants for entry into higher education at the provider divided by the number of UK 18 year olds in the population, multiplied by 10,000. This gives the number of 18 year olds, for every 10,000 in the population, that were placed at the provider through one of their choices, including any choices made through Extra, or via Adjustment, Clearing or RPA. It is an alternative way of expressing the entry rate to a provider. By referencing the underlying population this statistic shows how the number of placed applicants is changing in relation to the available pool of potential applicants and so gives the chance that somebody from the group will be placed at a provider.

This statistic is only reported for 18 year olds.

Average offer rate

The offer rate that you might expect if the predicted grades and subject choice of applicants were the only factors that influenced whether an applicant was made an offer by the provider. The average offer rate is calculated by dividing applicants according to their specific combination of grades (for A levels the best three predicted grades are used, for BTECs, International Baccalaureate and Scottish Highers and Advanced Highers, predicted grades along with any grades already achieved upon applying are used) and subject choice. For each combination the number of main scheme offers is divided by the number of main scheme applications, to give an overall offer rate. This is then multiplied by the number of applications made by the group for which the average offer rate is being calculated (for example POLAR3 quintile 1), to give an average number of offers for that group. These average number of offers are then added together across all combinations of predicted grade and subject and divided by the number of main scheme applications from the group to give the average offer rate.

The average offer rate does not attempt to control for any other factors that may play a part in the decision to make an offer, such as the subject of the qualifications studied, their relevance to a course, or the grade in each subject; higher numbers of A levels being studied; the exact profile of grades predicted; personal statements; teacher references; interviews; or any other criteria (such as work experience or portfolios) that may be part of the admissions decision.

This statistic is only reported for 18 year olds.

Contribution of group to the average offer rate

The way in which the average offer rate is defined means that the pattern of application and offers of a group (for example POLAR3 quintile 1) will always contribute, in part, to the average offer rate for that group. When this contribution is large, the average offer rate will mainly reflect the patterns for the group, meaning that the value of the average offer rate will be similar to the offer rate, the percentage point difference statistic will be small, and any real difference between the offer rate and what might be expected given the predicted grades and subject choices of the applicants will be difficult to detect.

Values of the contribution of group to the average offer rate range between 0 and 1. The closer the value is to 1 the greater the contribution a group makes to its own average offer rate.

This statistic is only reported for 18 year olds.

Placed June deadline applicants

An applicant who has been placed for entry into higher education at the provider through a June deadline application.

Placed June deadline applicants per 10,000 population

The number of UK domiciled 18 year old placed June deadline applicants at the provider divided by the number of UK 18 year olds in the population, multiplied by 10,000. This gives the number of 18 year olds, for every 10,000 in the population, that were placed at the provider through one of their June deadline applications. It is an alternative way of expressing the entry rate to a provider, but for placed June deadline applicants only. By referencing the underlying population this statistic shows how the number of placed June deadline applicants is changing in relation to the available pool of potential 18 year old applicants and so gives the chance that somebody from the group will be placed at a provider through a June deadline application.

This statistic is only reported for 18 year olds.

June deadline applications

An application (or choice) to a course in higher education to the provider that is made by the June 30 deadline. Each applicant can make up to five choices this way. The number of June deadline applications does not include choices made through the following routes: Clearing, Extra, Adjustment and RPAs. Applications made to October deadline courses received after the October deadline are not included in these statistics.

June deadline applicants

The number of applicants that made at least one application to the provider by the June 30 deadline.

June deadline applicants per 10,000 population

The number of UK domiciled 18 year old June deadline applicants to the provider divided by the number of UK 18 year olds in the population, multiplied by 10,000. This gives the number of 18 year olds, for every 10,000 in the population, who applied by the June 30 deadline. It is equivalent to the application rate. By referencing the underlying population this statistic shows how the number of June deadline applicants is changing in relation to the available pool of potential 18 year old applicants and so gives the chance that somebody from the group will apply to a provider by the June 30 deadline.

This statistic is only reported for 18 year olds.

Offers

An offer is defined as a provider's decision in response to an application to offer a place to an applicant, often subject to the applicant satisfying academic and/or other criteria, via a June deadline application (i.e. does not cover choices made through the following routes: Clearing, Extra, Adjustment and RPAs).

Offer rate

The number of offers made divided by the number of June deadline applications. This gives the proportion of all June deadline applications to the provider that received an offer.

Percentage point difference between offer rate and average offer rate

The offer rate minus the average offer rate.

The percentage point difference can be compared to the expected range of statistical variation resulting from the calculation of the average offer rate using the Average Offer Rate Lookup Table. Where the value of the percentage point difference lies outside of this range, the percentage point difference may be considered to represent a real difference between the offer rate and the average offer rate.

Other definitions

Age

This analysis uses country-specific age definitions that align with the cut off points for school and college cohorts within the different administrations of the UK. For England and Wales, ages are defined on the 31 August, for Northern Ireland on the 1 July and for Scotland on the 28 February the following year. Defining ages in this way matches the assignment of children to school cohorts. For applicants outside of the UK a cohort cut off of 31 August has been used. Numbers for applicants aged 17 and under are included in the tables that report numbers for all age groups. Providers in Scotland typically receive a higher proportion of applicants aged 17 and under compared to providers elsewhere in the UK.

Provider

A higher education provider - a university or college.

UK domiciled

Declared area of permanent residence within England, Northern Ireland, Scotland and Wales. Applicants from the Channel Islands and Isle of Man are not included.