

Medium tariff providers

Cycle years: 2012 - 2017

Cycle Reference Point: End of Cycle

Applicant coverage: UK domiciled

Reporting groups: Sex, POLAR3, ethnic group

Applicant statistics: June deadline applicants, placed June deadline applicants, all placed applicants, June deadline applicants per 10,000 population, placed June deadline applicants per 10,000 population, all placed applicants per 10,000 population

Application statistics: June deadline applications, offers, offer rate, average offer rate, percentage point difference between offer rate and average offer rate, contribution of group to the average offer rate

Non-disclosure controls: To avoid the disclosure of information about any individual the following measures are taken

- Applicants, placed applicants, applications and offers are rounded to the nearest 5.
- Applicants/placed applicants per 10,000 population figures are reported as 0 if the applicant/placed applicant figures are rounded to 0.
- All statistics related to the offer rate are not reported when the number of applications for a group is less than 10. The percentage point difference between the offer rate and the average offer rate is not reported when the number of applications for a group is less than 50.
- Offer rates are reported as 0% if there are fewer than 5 offers, and 100% if the number of offers is within 5 of the number of applications. When the offer rate is reported as 0% or 100%, it is reported in italics.

Contents:

18 year old applicants:	P.1
18 year old applications:	P.2
18 year old applicants by sex:	P.3
18 year old applications by sex:	P.4
18 year old applicants by POLAR3 quintile:	P.7
18 year old applications by POLAR3 quintile:	P.8
18 year old applicants by ethnic group:	P.11
18 year old applications by ethnic group:	P.12
Applicants (all ages):	P.15
Applications (all ages):	P.16
Applicants (all ages) by sex:	P.17
Applications (all ages) by sex:	P.18
Applicants (all ages) by POLAR3 quintile:	P.19
Applications (all ages) by POLAR3 quintile:	P.20
Applicants (all ages) by ethnic group:	P.21
Applications (all ages) by ethnic group:	P.22

P.1 18 year old applicants

Statistic	2012	2013	2014	2015	2016	2017
June deadline applicants	182,020	183,530	188,080	195,430	198,660	197,560
Placed June deadline applicants	58,355	60,665	61,555	64,335	67,065	69,010
All placed applicants	67,570	69,170	70,855	74,905	79,240	82,665
June deadline applicants per 10,000 population	2,353.2	2,411.8	2,497.2	2,550.9	2,650.4	2,666.5
Placed June deadline applicants per 10,000	754.4	797.2	817.3	839.7	894.7	931.4
All placed applicants per 10,000 population	873.6	908.9	940.8	977.7	1,057.2	1,115.8

P.2 18 year old applications

Statistic	2012	2013	2014	2015	2016	2017
June deadline applications	382,360	385,000	398,050	413,995	421,890	414,980
Offers	281,785	296,680	309,295	320,740	331,165	334,095
Offer rate	73.7%	77.1%	77.7%	77.5%	78.5%	80.5%

P.3 18 year old applicants by sex

Statistic	Sex	2012	2013	2014	2015	2016	2017
June deadline applicants	Men	78,760	79,660	81,975	83,070	84,900	84,765
	Women	103,260	103,875	106,105	112,360	113,760	112,795
Placed June deadline applicants	Men	26,415	27,415	27,725	28,125	30,030	30,450
	Women	31,940	33,250	33,835	36,215	37,035	38,560
All placed applicants	Men	30,865	31,355	32,115	33,000	35,600	36,845
	Women	36,705	37,815	38,735	41,905	43,640	45,820
June deadline applicants per 10,000 population	Men	1,986.0	2,040.4	2,117.6	2,116.8	2,210.1	2,231.7
	Women	2,739.5	2,803.1	2,898.7	3,006.6	3,113.2	3,123.9
Placed June deadline applicants per 10,000 population	Men	666.1	702.2	716.2	716.6	781.7	801.7
	Women	847.4	897.3	924.3	969.0	1,013.5	1,067.9
All placed applicants per 10,000 population	Men	778.3	803.1	829.7	840.9	926.8	970.0
	Women	973.8	1,020.4	1,058.3	1,121.3	1,194.3	1,269.1

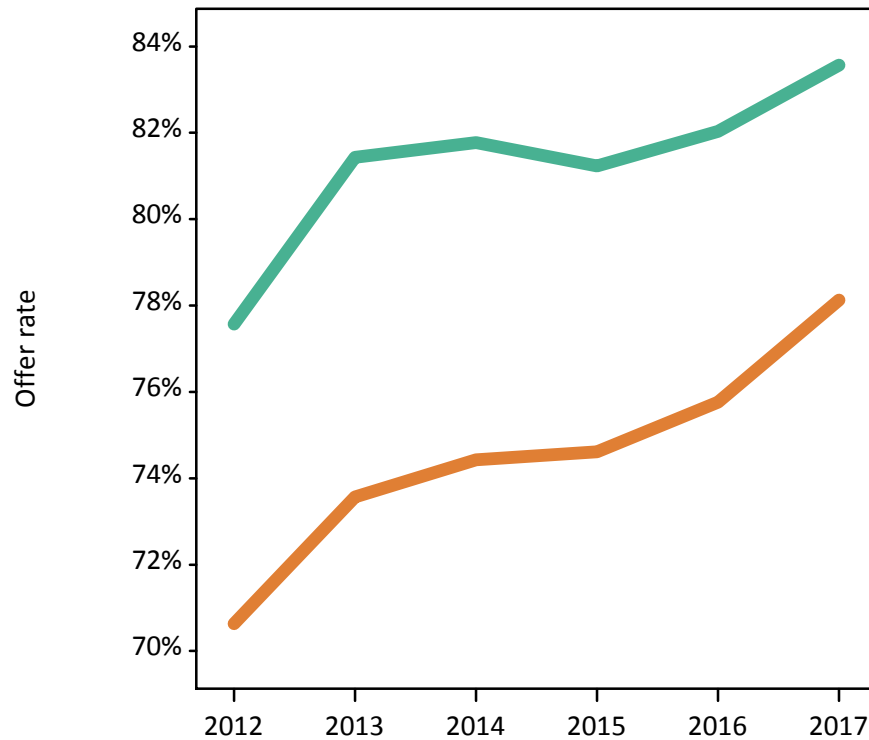
P.4 18 year old applications by sex

Statistic	Sex	2012	2013	2014	2015	2016	2017
June deadline applications	Men	168,930	170,855	177,565	178,980	183,865	181,490
	Women	213,425	214,145	220,480	235,020	238,025	233,490
Offers	Men	131,040	139,130	145,200	145,390	150,835	151,670
	Women	150,750	157,550	164,095	175,350	180,330	182,425
Offer rate	Men	77.6%	81.4%	81.8%	81.2%	82.0%	83.6%
	Women	70.6%	73.6%	74.4%	74.6%	75.8%	78.1%
Average offer rate	Men	77.8%	81.6%	82.1%	81.5%	82.4%	83.9%
	Women	70.4%	73.4%	74.2%	74.4%	75.5%	77.8%
Percentage point difference between offer rate and average offer rate	Men	-0.3	-0.2	-0.3	-0.3	-0.4	-0.4
	Women	0.2	0.2	0.3	0.2	0.3	0.3
Contribution of group to the average offer rate	Men	0.612	0.616	0.620	0.607	0.610	0.613
	Women	0.693	0.694	0.694	0.701	0.699	0.699

P.5 18 year old offer rate by sex

Note: The line for a group is not plotted when that group made fewer than 10 applications in any of the years from 2012-2017.

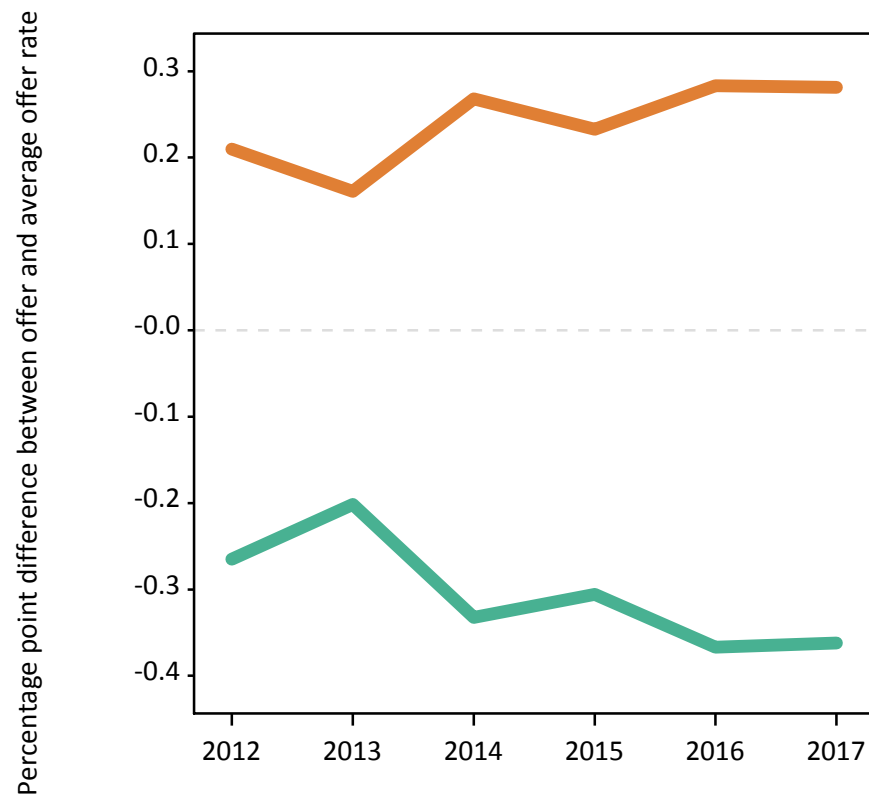
Men
Women



P.6 Percentage point difference between 18 year old offer rate and average offer rate by sex

Note: The line for a group is not plotted when that group made fewer than 50 applications in any of the years from 2012-2017.

Men
Women



P.7 18 year old applicants by POLAR3 quintile

Statistic	POLAR3 quintile	2012	2013	2014	2015	2016	2017
June deadline applicants	Quintile 1	18,225	18,900	20,195	21,190	21,670	21,840
	Quintile 2	27,220	27,935	29,145	30,530	31,155	30,995
	Quintile 3	35,300	35,940	36,925	38,685	39,410	39,220
	Quintile 4	44,195	44,615	44,820	46,625	47,325	46,690
	Quintile 5	56,725	55,825	56,645	58,035	58,700	58,280
Placed June deadline applicants	Quintile 1	5,670	5,930	6,510	6,805	7,205	7,740
	Quintile 2	8,575	9,130	9,600	10,060	10,550	10,870
	Quintile 3	11,190	11,785	12,060	12,505	13,200	13,695
	Quintile 4	14,575	15,040	14,980	15,700	16,495	16,480
	Quintile 5	18,240	18,695	18,310	19,155	19,485	20,035
All placed applicants	Quintile 1	6,445	6,620	7,310	7,800	8,280	8,960
	Quintile 2	9,870	10,255	10,815	11,525	12,180	12,730
	Quintile 3	12,925	13,470	13,965	14,615	15,625	16,340
	Quintile 4	16,855	17,240	17,170	18,250	19,500	19,855
	Quintile 5	21,345	21,475	21,470	22,575	23,495	24,555
June deadline applicants per 10,000 population	Quintile 1	1,279.4	1,356.1	1,451.3	1,512.3	1,605.2	1,642.2
	Quintile 2	1,815.4	1,895.7	1,992.0	2,055.4	2,154.6	2,182.4
	Quintile 3	2,285.9	2,356.7	2,453.7	2,519.1	2,621.6	2,633.4
	Quintile 4	2,785.2	2,852.5	2,908.3	2,978.5	3,065.4	3,057.2
	Quintile 5	3,376.6	3,376.2	3,473.1	3,466.6	3,553.0	3,548.7
Placed June deadline applicants per 10,000 population	Quintile 1	398.1	425.6	467.8	485.8	533.5	582.2
	Quintile 2	571.9	619.5	656.0	677.2	729.6	765.2
	Quintile 3	724.6	772.8	801.4	814.3	878.1	919.6
	Quintile 4	918.4	961.6	972.1	1,002.9	1,068.4	1,079.0
	Quintile 5	1,085.8	1,130.5	1,122.5	1,144.2	1,179.5	1,220.1
All placed applicants per 10,000 population	Quintile 1	452.5	475.0	525.3	556.8	613.2	673.8
	Quintile 2	658.2	696.0	739.0	775.8	842.3	896.4
	Quintile 3	837.0	883.2	927.9	951.6	1,039.4	1,097.0
	Quintile 4	1,062.3	1,102.3	1,114.3	1,165.9	1,263.2	1,300.1
	Quintile 5	1,270.4	1,298.7	1,316.5	1,348.4	1,421.9	1,495.3

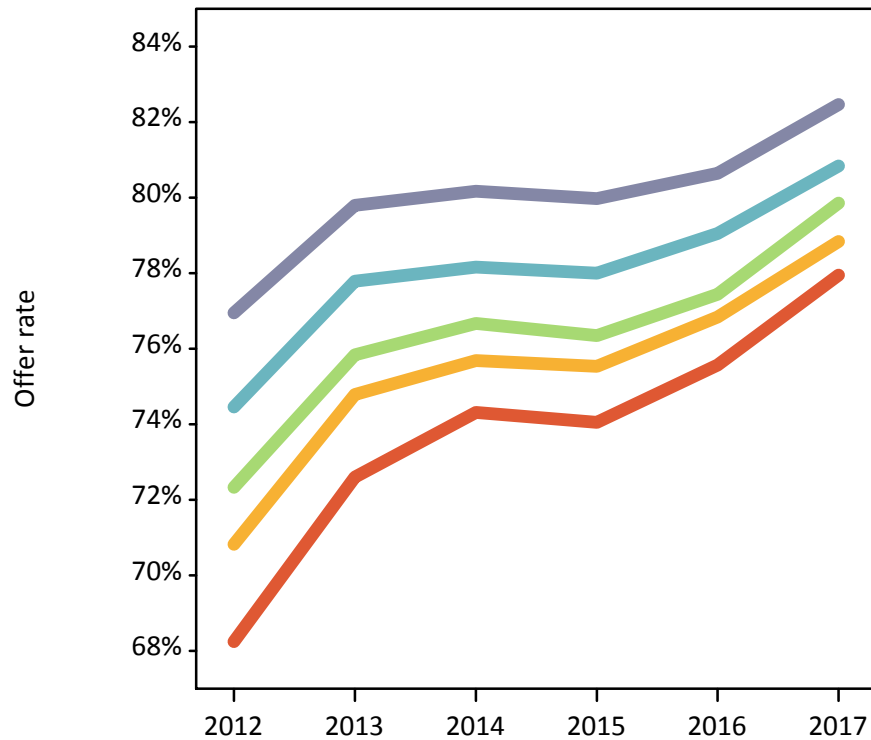
P.8 18 year old applications by POLAR3 quintile

Statistic	POLAR3 quintile	2012	2013	2014	2015	2016	2017
June deadline applications	Quintile 1	36,690	37,680	40,870	42,800	44,255	44,410
	Quintile 2	55,990	57,470	60,585	63,130	64,825	63,995
	Quintile 3	73,995	75,160	77,930	81,810	83,805	82,210
	Quintile 4	94,125	95,405	96,425	100,720	102,070	99,540
	Quintile 5	120,780	118,645	121,515	124,755	126,085	123,680
Offers	Quintile 1	25,040	27,355	30,370	31,695	33,440	34,620
	Quintile 2	39,655	42,985	45,855	47,680	49,810	50,450
	Quintile 3	53,525	56,995	59,745	62,460	64,895	65,645
	Quintile 4	70,080	74,215	75,360	78,560	80,690	80,465
	Quintile 5	92,935	94,670	97,420	99,770	101,685	101,990
Offer rate	Quintile 1	68.2%	72.6%	74.3%	74.1%	75.6%	78.0%
	Quintile 2	70.8%	74.8%	75.7%	75.5%	76.8%	78.8%
	Quintile 3	72.3%	75.8%	76.7%	76.3%	77.4%	79.9%
	Quintile 4	74.5%	77.8%	78.2%	78.0%	79.1%	80.8%
	Quintile 5	76.9%	79.8%	80.2%	80.0%	80.6%	82.5%
Average offer rate	Quintile 1	69.6%	73.8%	75.2%	75.3%	76.7%	79.1%
	Quintile 2	71.4%	75.3%	76.0%	76.1%	77.4%	79.2%
	Quintile 3	72.7%	76.1%	76.9%	76.5%	77.7%	80.0%
	Quintile 4	74.3%	77.6%	78.1%	77.9%	78.8%	80.6%
	Quintile 5	76.2%	79.2%	79.6%	79.2%	80.0%	81.9%
Percentage point difference between offer rate and average offer rate	Quintile 1	-1.3	-1.2	-0.9	-1.3	-1.1	-1.1
	Quintile 2	-0.6	-0.5	-0.4	-0.6	-0.5	-0.4
	Quintile 3	-0.4	-0.3	-0.2	-0.1	-0.2	-0.2
	Quintile 4	0.2	0.2	0.1	0.1	0.2	0.3
	Quintile 5	0.8	0.6	0.5	0.8	0.6	0.5
Contribution of group to the average offer rate	Quintile 1	0.195	0.194	0.199	0.196	0.197	0.200
	Quintile 2	0.226	0.226	0.226	0.226	0.224	0.229
	Quintile 3	0.260	0.261	0.260	0.259	0.260	0.261
	Quintile 4	0.307	0.307	0.301	0.301	0.298	0.299
	Quintile 5	0.392	0.385	0.381	0.376	0.374	0.374

P.9 18 year old offer rate by POLAR3 quintile

Note: The line for a group is not plotted when that group made fewer than 10 applications in any of the years from 2012-2017.

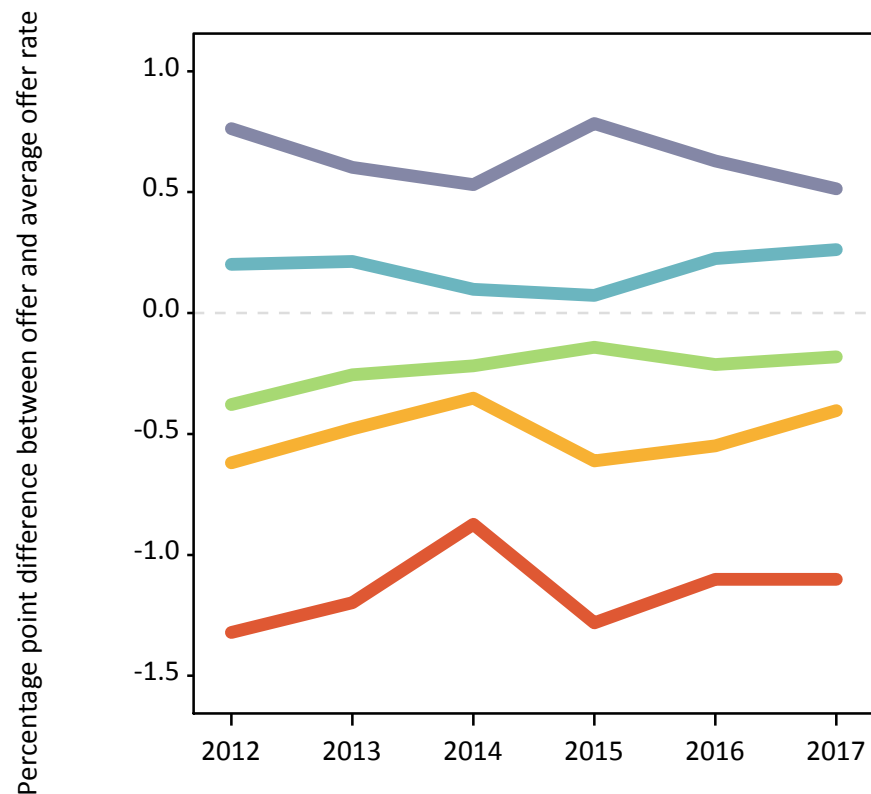
- Quintile 1
- Quintile 2
- Quintile 3
- Quintile 4
- Quintile 5



P.10 Percentage point difference between 18 year old offer rate and average offer rate by POLAR3 quintile

Note: The line for a group is not plotted when that group made fewer than 50 applications in any of the years from 2012-2017.

- Quintile 1
- Quintile 2
- Quintile 3
- Quintile 4
- Quintile 5



P.11 18 year old applicants by ethnic group

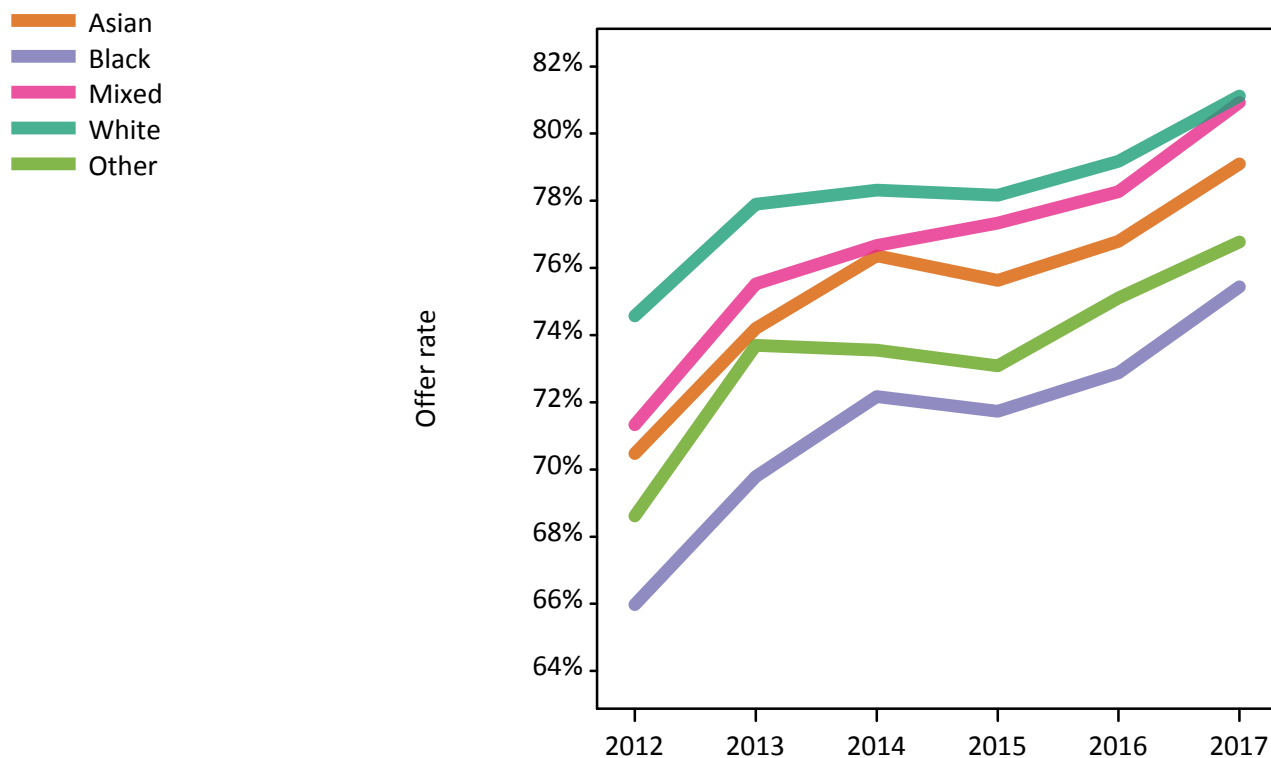
Statistic	Ethnic group	2012	2013	2014	2015	2016	2017
June deadline applicants	Asian	16,535	17,390	18,820	20,335	21,810	23,195
	Black	7,880	8,900	9,510	10,450	10,810	11,055
	Mixed	5,955	6,315	6,770	7,725	8,010	8,410
	White	149,000	148,220	149,955	153,400	154,075	150,710
	Other	1,900	2,000	2,320	2,580	2,820	3,115
Placed June deadline applicants	Asian	3,925	4,500	4,890	5,435	6,180	6,755
	Black	1,940	2,345	2,595	2,905	3,105	3,315
	Mixed	1,730	1,855	2,055	2,375	2,470	2,780
	White	50,095	51,210	51,235	52,670	54,150	54,905
	Other	460	545	575	685	815	915
All placed applicants	Asian	5,515	5,920	6,555	7,380	8,565	9,485
	Black	2,640	3,075	3,545	3,865	4,305	4,590
	Mixed	2,110	2,220	2,440	2,825	3,020	3,475
	White	56,365	56,935	57,230	59,555	61,730	63,285
	Other	615	695	785	910	1,125	1,325
June deadline applicants per 10,000 population	Asian	2,553.0	2,636.5	2,775.3	2,873.4	3,031.1	3,152.5
	Black	2,797.8	2,997.6	3,136.5	3,282.1	3,453.2	3,513.5
	Mixed	2,286.7	2,334.9	2,353.6	2,504.5	2,544.9	2,620.6
	White	2,307.6	2,355.6	2,430.6	2,462.0	2,547.2	2,539.6
	Other	2,145.0	2,206.7	2,490.4	2,675.7	2,832.8	3,026.1
Placed June deadline applicants per 10,000 population	Asian	606.4	682.1	720.9	767.8	859.1	918.0
	Black	688.2	789.5	855.7	912.6	991.8	1,053.8
	Mixed	664.6	686.8	714.0	770.2	785.0	866.0
	White	775.8	813.9	830.5	845.3	895.3	925.2
	Other	521.0	603.2	619.9	710.7	819.0	887.3
All placed applicants per 10,000 population	Asian	851.6	897.9	966.6	1,042.4	1,190.5	1,289.0
	Black	937.8	1,036.4	1,169.8	1,213.8	1,374.4	1,458.0
	Mixed	809.3	820.7	847.8	916.8	959.1	1,081.9
	White	872.9	904.9	927.6	955.9	1,020.5	1,066.4
	Other	697.3	766.4	842.3	944.1	1,132.5	1,285.4

P.12 18 year old applications by ethnic group

Statistic	Ethnic group	2012	2013	2014	2015	2016	2017
June deadline applications	Asian	32,390	33,940	37,505	40,600	43,790	46,320
	Black	16,095	18,260	19,920	22,160	22,870	23,085
	Mixed	12,125	12,975	14,140	16,075	16,755	17,465
	White	316,470	314,350	320,330	327,935	330,295	319,485
	Other	3,765	4,070	4,690	5,305	5,900	6,465
Offers	Asian	22,825	25,185	28,640	30,705	33,630	36,640
	Black	10,620	12,745	14,375	15,895	16,665	17,415
	Mixed	8,645	9,800	10,840	12,430	13,115	14,135
	White	235,990	244,865	250,875	256,335	261,525	259,170
	Other	2,580	3,000	3,450	3,875	4,430	4,965
Offer rate	Asian	70.5%	74.2%	76.4%	75.6%	76.8%	79.1%
	Black	66.0%	69.8%	72.2%	71.7%	72.9%	75.4%
	Mixed	71.3%	75.5%	76.7%	77.3%	78.3%	80.9%
	White	74.6%	77.9%	78.3%	78.2%	79.2%	81.1%
	Other	68.6%	73.7%	73.6%	73.1%	75.1%	76.8%
Average offer rate	Asian	72.1%	75.4%	77.3%	76.8%	77.9%	80.0%
	Black	68.8%	72.8%	74.5%	73.9%	75.5%	77.8%
	Mixed	71.7%	76.1%	77.2%	77.7%	78.6%	81.1%
	White	74.2%	77.5%	78.0%	77.8%	78.8%	80.8%
	Other	70.4%	75.1%	75.2%	74.9%	76.5%	78.9%
Percentage point difference between offer rate and average offer rate	Asian	-1.6	-1.2	-0.9	-1.2	-1.1	-0.9
	Black	-2.8	-3.1	-2.3	-2.2	-2.7	-2.4
	Mixed	-0.4	-0.6	-0.5	-0.4	-0.3	-0.2
	White	0.4	0.4	0.3	0.3	0.4	0.3
	Other	-1.8	-1.4	-1.7	-1.8	-1.4	-2.1
Contribution of group to the average offer rate	Asian	0.302	0.302	0.296	0.301	0.308	0.319
	Black	0.180	0.187	0.187	0.184	0.179	0.185
	Mixed	0.118	0.118	0.117	0.121	0.118	0.122
	White	0.874	0.866	0.857	0.848	0.843	0.836
	Other	0.121	0.116	0.117	0.111	0.108	0.111

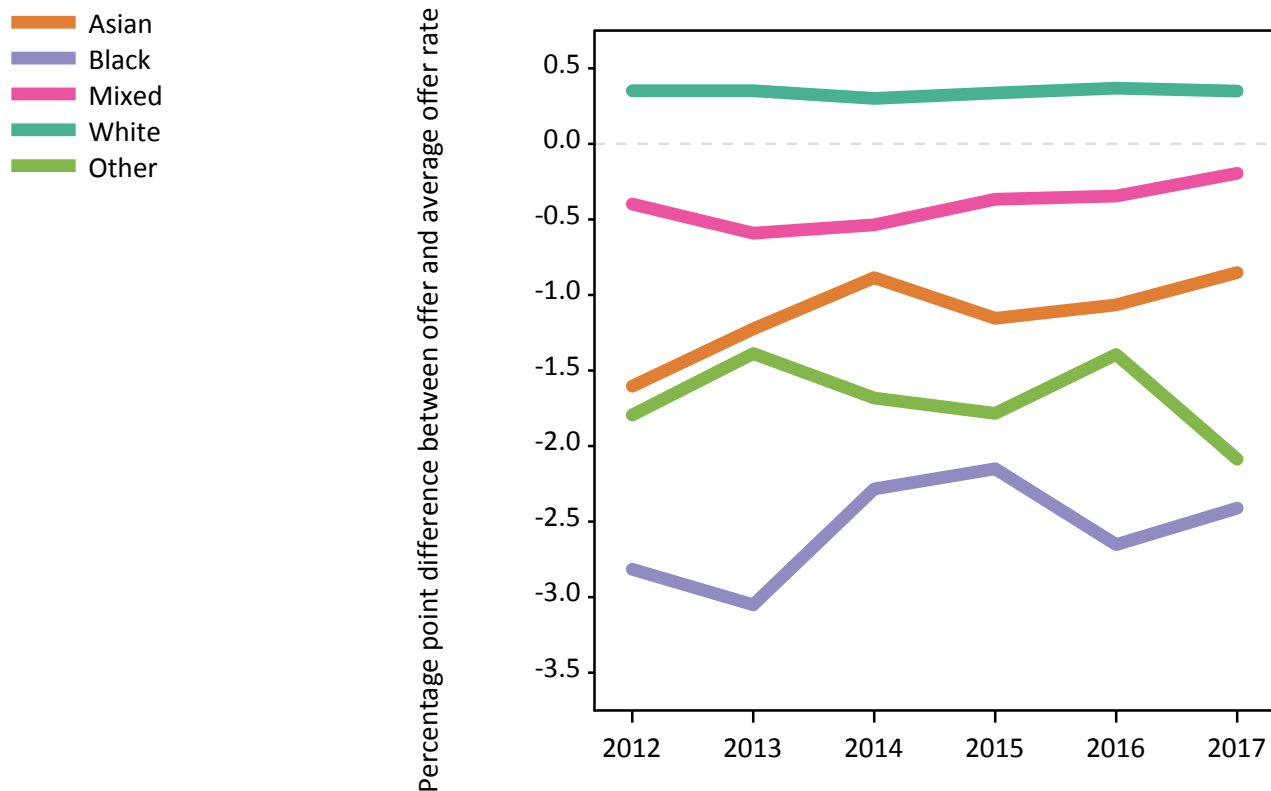
P.13 18 year old offer rate by ethnic group

Note: The line for a group is not plotted when that group made fewer than 10 applications in any of the years from 2012-2017.



P.14 Percentage point difference between 18 year old offer rate and average offer rate by ethnic group

Note: The line for a group is not plotted when that group made fewer than 50 applications in any of the years from 2012-2017.



P.15 Applicants (all ages)

Statistic	2012	2013	2014	2015	2016	2017
June deadline applicants	339,515	350,965	362,395	370,940	372,355	356,410
Placed June deadline applicants	106,165	114,745	117,800	121,570	125,065	126,165
All placed applicants	126,600	134,245	137,005	144,915	150,560	153,445

P.16 Applications (all ages)

Statistic	2012	2013	2014	2015	2016	2017
June deadline applications	686,545	710,380	742,460	761,935	766,210	732,110
Offers	425,470	464,295	490,170	506,525	517,765	515,675
Offer rate	62.0%	65.4%	66.0%	66.5%	67.6%	70.4%

P.17 Applicants (all ages) by sex

Statistic	Sex	2012	2013	2014	2015	2016	2017
June deadline applicants	Men	144,535	149,875	154,525	156,265	156,575	150,610
	Women	194,980	201,090	207,870	214,670	215,780	205,800
Placed June deadline applicants	Men	47,620	51,460	52,165	53,150	55,175	54,885
	Women	58,545	63,285	65,640	68,420	69,895	71,285
All placed applicants	Men	57,250	60,560	61,300	64,025	67,160	67,700
	Women	69,350	73,685	75,705	80,890	83,400	85,745

P.18 Applications (all ages) by sex

Statistic	Sex	2012	2013	2014	2015	2016	2017
June deadline applications	Men	300,790	313,230	326,905	329,835	331,885	317,945
	Women	385,755	397,150	415,555	432,105	434,325	414,165
Offers	Men	201,565	222,445	233,095	235,385	240,110	236,630
	Women	223,905	241,850	257,075	271,140	277,655	279,045
Offer rate	Men	67.0%	71.0%	71.3%	71.4%	72.3%	74.4%
	Women	58.0%	60.9%	61.9%	62.7%	63.9%	67.4%

P.19 Applicants (all ages) by POLAR3 quintile

Statistic	POLAR3 quintile	2012	2013	2014	2015	2016	2017
June deadline applicants	Quintile 1	40,355	42,075	44,750	45,475	46,200	44,095
	Quintile 2	54,155	56,390	59,020	60,560	60,815	58,210
	Quintile 3	68,445	71,075	73,575	75,340	75,695	71,815
	Quintile 4	79,255	82,345	83,755	86,020	85,965	82,010
	Quintile 5	96,335	98,245	100,470	102,685	102,755	99,155
Placed June deadline applicants	Quintile 1	12,235	13,300	14,260	14,650	15,245	15,655
	Quintile 2	16,540	18,240	19,055	19,755	20,370	20,555
	Quintile 3	20,525	22,475	23,355	23,845	24,780	24,965
	Quintile 4	25,560	27,425	27,800	28,700	29,620	29,415
	Quintile 5	31,045	33,045	33,090	34,365	34,770	35,200
All placed applicants	Quintile 1	14,425	15,240	16,305	17,250	17,880	18,595
	Quintile 2	19,580	21,015	21,820	23,165	24,035	24,560
	Quintile 3	24,570	26,490	27,265	28,630	30,065	30,360
	Quintile 4	30,470	32,245	32,305	34,310	35,805	35,955
	Quintile 5	37,185	38,915	38,995	41,220	42,415	43,465

P.20 Applications (all ages) by POLAR3 quintile

Statistic	POLAR3 quintile	2012	2013	2014	2015	2016	2017
June deadline applications	Quintile 1	77,645	80,510	86,710	88,370	90,530	86,905
	Quintile 2	106,605	110,885	118,110	121,040	122,300	116,855
	Quintile 3	136,670	142,060	148,900	153,235	154,260	146,275
	Quintile 4	162,855	170,035	174,695	180,450	180,305	171,360
	Quintile 5	200,765	205,210	212,360	217,070	216,950	208,335
Offers	Quintile 1	43,175	48,250	53,325	55,020	57,250	58,035
	Quintile 2	62,480	69,840	74,950	77,785	80,010	80,030
	Quintile 3	81,955	90,015	95,905	99,490	102,130	101,485
	Quintile 4	103,040	113,065	116,920	121,475	123,540	122,075
	Quintile 5	133,740	142,165	148,080	151,710	153,745	152,510
Offer rate	Quintile 1	55.6%	59.9%	61.5%	62.3%	63.2%	66.8%
	Quintile 2	58.6%	63.0%	63.5%	64.3%	65.4%	68.5%
	Quintile 3	60.0%	63.4%	64.4%	64.9%	66.2%	69.4%
	Quintile 4	63.3%	66.5%	66.9%	67.3%	68.5%	71.2%
	Quintile 5	66.6%	69.3%	69.7%	69.9%	70.9%	73.2%

P.21 Applicants (all ages) by ethnic group

Statistic	Ethnic group	2012	2013	2014	2015	2016	2017
June deadline applicants	Asian	32,925	34,810	37,670	39,895	41,470	41,340
	Black	26,605	27,075	28,520	29,670	29,870	27,715
	Mixed	11,905	12,750	13,810	14,990	15,495	15,395
	White	261,205	269,195	274,760	277,700	276,195	262,545
	Other	4,750	4,935	5,485	5,920	6,305	6,560
Placed June deadline applicants	Asian	7,385	8,625	9,280	10,130	11,115	11,665
	Black	4,865	5,385	5,760	6,265	6,575	6,805
	Mixed	3,435	3,790	4,030	4,585	4,745	5,105
	White	88,870	95,130	96,865	98,355	100,080	99,845
	Other	1,065	1,205	1,290	1,480	1,660	1,865
All placed applicants	Asian	10,435	11,485	12,600	13,950	15,640	16,520
	Black	6,660	7,195	7,950	8,700	9,410	9,680
	Mixed	4,260	4,555	4,895	5,575	5,935	6,430
	White	102,385	108,150	108,560	113,135	115,520	116,275
	Other	1,480	1,605	1,765	2,080	2,355	2,780

P.22 Applications (all ages) by ethnic group

Statistic	Ethnic group	2012	2013	2014	2015	2016	2017
June deadline applications	Asian	62,565	66,240	73,405	78,215	81,540	81,470
	Black	46,725	48,080	51,790	55,115	55,550	52,160
	Mixed	23,565	25,380	27,885	30,490	31,540	31,380
	White	540,780	557,085	574,730	581,065	579,290	548,480
	Other	8,850	9,440	10,515	11,725	12,505	13,075
Offers	Asian	37,340	42,315	48,365	51,450	54,890	57,165
	Black	20,055	23,400	26,175	28,725	29,765	30,125
	Mixed	14,090	16,145	17,980	20,210	21,230	22,015
	White	346,915	374,350	388,970	395,770	400,405	394,120
	Other	4,790	5,690	6,330	7,130	7,875	8,670
Offer rate	Asian	59.7%	63.9%	65.9%	65.8%	67.3%	70.2%
	Black	42.9%	48.7%	50.5%	52.1%	53.6%	57.8%
	Mixed	59.8%	63.6%	64.5%	66.3%	67.3%	70.2%
	White	64.2%	67.2%	67.7%	68.1%	69.1%	71.9%
	Other	54.1%	60.3%	60.2%	60.8%	63.0%	66.3%

Technical Notes and Definitions

UCAS undergraduate scheme

Adjustment

Adjustment allows applicants who have met and exceeded the terms of their conditional firm offer to seek and find a place at another provider whilst keeping their place at their original firm choice provider.

Clearing

Clearing is a route for applicants that are not placed and holding no offers to find a place on courses with vacancies.

Cycle year

The UCAS application cycle which runs from September to October the following year. For example the 2017 cycle runs from September 2016 through to October 2017.

End of cycle

The point in the cycle to which the numbers in this report refer, and the point at which the cycle is closed such that no more applications or offers can be made, and no more applicants can be placed. Numbers reported at the end of cycle exclude information on a small number of applicants who cancelled during the cycle.

Extra

Applicants who are unsuccessful in obtaining an offer or decline all offers may be eligible to apply through Extra, where they can apply to one further course at a time. Extra operates from 25 February until early July. It provides applicants who are eligible the possibility of obtaining an offer before exam results are published and Clearing starts.

June 30 deadline

The deadline for main scheme applications. Applicants who apply after this date will go directly into Clearing.

Record of Prior Acceptance (RPA)

RPA is an acceptance route used when a provider informs UCAS of applicants it has accepted outside of the normal application process (e.g. individuals who have applied directly to the provider).

Reporting groups

Ethnic group

High level grouping of ethnic origin as declared by the applicant: 'White', 'Black', 'Asian', 'Mixed', 'Other', 'Unknown'. Applicants who declare themselves as 'Unknown' ethnic origin are not reported in these tables, but are included in the associated csv data file.

POLAR3 quintile

Developed by HEFCE, POLAR3 classifies small areas across the UK into five groups according to their level of young participation in Higher Education. Each of these groups represents around 20 per cent of young people and is ranked from Quintile 1 (areas with the lowest young participation rates, considered as the most disadvantaged) to Quintile 5 (highest young participation rates, considered most advantaged). POLAR3 is based on the participation rates of young people between 2005 and 2009 who entered Higher Education between 2005-06 and 2010-11, therefore is most suitable for applicants aged 19 and under. These groups are assigned using the postcode declared by the applicant at the time of their application. If a UK postcode is invalid, considered unsafe for measurement or there is no link to Census geography possible then the applicant is not assigned to a quintile. Applicants with no POLAR3 quintile are not reported.

Sex

Sex as declared by the applicant.

SIMD 2016 quintile

Scottish index of multiple deprivation (SIMD) identifies small area concentrations of multiple deprivation across all of Scotland, providing a relative measure of deprivation amongst 6505 small areas (data zones) based on 7 socio-economic domains. These small areas are classified into five groups ranked from Quintile 1 (considered the most deprived) to Quintile 5 (considered least deprived), with equal populations in each quintile. Quintiles are assigned using the postcode declared by the applicant, applicants declaring invalid postcodes are classified as 'Not assigned' and are not reported.

SIMD is only defined for applicants domiciled in Scotland, therefore any applicants domiciled outside of Scotland cannot be assigned to an SIMD quintile and so are not reported for this measure.

SIMD is only reported for providers in Scotland. Application and entry rates by SIMD are reported in the 2017 End of Cycle Report and the 2017 cycle January deadline application rate report.

Statistics reported in the tables

All placed applicants

The number of applicants placed for entry into higher education at the provider through one of their choices, including any choices made through Extra, or via Adjustment, Clearing or RPA.

All placed applicants per 10,000 population

The number of total UK domiciled 18 year old placed applicants for entry into higher education at the provider divided by the number of UK 18 year olds in the population, multiplied by 10,000. This gives the number of 18 year olds, for every 10,000 in the population, that were placed at the provider through one of their choices, including any choices made through Extra, or via Adjustment, Clearing or RPA. It is an alternative way of expressing the entry rate to a provider. By referencing the underlying population this statistic shows how the number of placed applicants is changing in relation to the available pool of potential applicants and so gives the chance that somebody from the group will be placed at a provider.

This statistic is only reported for 18 year olds.

Average offer rate

The offer rate that you might expect if the predicted grades and subject choice of applicants were the only factors that influenced whether an applicant was made an offer by the provider. The average offer rate is calculated by dividing applicants according to their specific combination of grades (for A levels the best three predicted grades are used, for BTECs, International Baccalaureate and Scottish Highers and Advanced Highers, predicted grades along with any grades already achieved upon applying are used) and subject choice. For each combination the number of main scheme offers is divided by the number of main scheme applications, to give an overall offer rate. This is then multiplied by the number of applications made by the group for which the average offer rate is being calculated (for example POLAR3 quintile 1), to give an average number of offers for that group. These average number of offers are then added together across all combinations of predicted grade and subject and divided by the number of main scheme applications from the group to give the average offer rate.

The average offer rate does not attempt to control for any other factors that may play a part in the decision to make an offer, such as the subject of the qualifications studied, their relevance to a course, or the grade in each subject; higher numbers of A levels being studied; the exact profile of grades predicted; personal statements; teacher references; interviews; or any other criteria (such as work experience or portfolios) that may be part of the admissions decision.

This statistic is only reported for 18 year olds.

Contribution of group to the average offer rate

The way in which the average offer rate is defined means that the pattern of application and offers of a group (for example POLAR3 quintile 1) will always contribute, in part, to the average offer rate for that group. When this contribution is large, the average offer rate will mainly reflect the patterns for the group, meaning that the value of the average offer rate will be similar to the offer rate, the percentage point difference statistic will be small, and any real difference between the offer rate and what might be expected given the predicted grades and subject choices of the applicants will be difficult to detect.

Values of the contribution of group to the average offer rate range between 0 and 1. The closer the value is to 1 the greater the contribution a group makes to its own average offer rate.

This statistic is only reported for 18 year olds.

Placed June deadline applicants

An applicant who has been placed for entry into higher education at the provider through a June deadline application.

Placed June deadline applicants per 10,000 population

The number of UK domiciled 18 year old placed June deadline applicants at the provider divided by the number of UK 18 year olds in the population, multiplied by 10,000. This gives the number of 18 year olds, for every 10,000 in the population, that were placed at the provider through one of their June deadline applications. It is an alternative way of expressing the entry rate to a provider, but for placed June deadline applicants only. By referencing the underlying population this statistic shows how the number of placed June deadline applicants is changing in relation to the available pool of potential 18 year old applicants and so gives the chance that somebody from the group will be placed at a provider through a June deadline application.

This statistic is only reported for 18 year olds.

June deadline applications

An application (or choice) to a course in higher education to the provider that is made by the June 30 deadline. Each applicant can make up to five choices this way. The number of June deadline applications does not include choices made through the following routes: Clearing, Extra, Adjustment and RPAs. Applications made to October deadline courses received after the October deadline are not included in these statistics.

June deadline applicants

The number of applicants that made at least one application to the provider by the June 30 deadline.

June deadline applicants per 10,000 population

The number of UK domiciled 18 year old June deadline applicants to the provider divided by the number of UK 18 year olds in the population, multiplied by 10,000. This gives the number of 18 year olds, for every 10,000 in the population, who applied by the June 30 deadline. It is equivalent to the application rate. By referencing the underlying population this statistic shows how the number of June deadline applicants is changing in relation to the available pool of potential 18 year old applicants and so gives the chance that somebody from the group will apply to a provider by the June 30 deadline.

This statistic is only reported for 18 year olds.

Offers

An offer is defined as a provider's decision in response to an application to offer a place to an applicant, often subject to the applicant satisfying academic and/or other criteria, via a June deadline application (i.e. does not cover choices made through the following routes: Clearing, Extra, Adjustment and RPAs).

Offer rate

The number of offers made divided by the number of June deadline applications. This gives the proportion of all June deadline applications to the provider that received an offer.

Percentage point difference between offer rate and average offer rate

The offer rate minus the average offer rate.

The percentage point difference can be compared to the expected range of statistical variation resulting from the calculation of the average offer rate using the Average Offer Rate Lookup Table. Where the value of the percentage point difference lies outside of this range, the percentage point difference may be considered to represent a real difference between the offer rate and the average offer rate.

Other definitions

Age

This analysis uses country-specific age definitions that align with the cut off points for school and college cohorts within the different administrations of the UK. For England and Wales, ages are defined on the 31 August, for Northern Ireland on the 1 July and for Scotland on the 28 February the following year. Defining ages in this way matches the assignment of children to school cohorts. For applicants outside of the UK a cohort cut off of 31 August has been used. Numbers for applicants aged 17 and under are included in the tables that report numbers for all age groups. Providers in Scotland typically receive a higher proportion of applicants aged 17 and under compared to providers elsewhere in the UK.

Provider

A higher education provider - a university or college.

UK domiciled

Declared area of permanent residence within England, Northern Ireland, Scotland and Wales. Applicants from the Channel Islands and Isle of Man are not included.