

## L27 Leeds Beckett University

**Cycle years:** 2012 - 2017

**Cycle Reference Point:** End of Cycle

**Applicant coverage:** UK domiciled

**Reporting groups:** Sex, POLAR3, ethnic group

**Applicant statistics:** June deadline applicants, placed June deadline applicants, all placed applicants, June deadline applicants per 10,000 population, placed June deadline applicants per 10,000 population, all placed applicants per 10,000 population

**Application statistics:** June deadline applications, offers, offer rate, average offer rate, percentage point difference between offer rate and average offer rate, contribution of group to the average offer rate

**Non-disclosure controls:** To avoid the disclosure of information about any individual the following measures are taken

- Applicants, placed applicants, applications and offers are rounded to the nearest 5.
- Applicants/placed applicants per 10,000 population figures are reported as 0 if the applicant/placed applicant figures are rounded to 0.
- All statistics related to the offer rate are not reported when the number of applications for a group is less than 10. The percentage point difference between the offer rate and the average offer rate is not reported when the number of applications for a group is less than 50.
- Offer rates are reported as 0% if there are fewer than 5 offers, and 100% if the number of offers is within 5 of the number of applications. When the offer rate is reported as 0% or 100%, it is reported in italics.

### Contents:

- 18 year old applicants: P.1
- 18 year old applications: P.2
- 18 year old applicants by sex: P.3
- 18 year old applications by sex: P.4
- 18 year old applicants by POLAR3 quintile: P.7
- 18 year old applications by POLAR3 quintile: P.8
- 18 year old applicants by ethnic group: P.11
- 18 year old applications by ethnic group: P.12
- Applicants (all ages): P.15
- Applications (all ages): P.16
- Applicants (all ages) by sex: P.17
- Applications (all ages) by sex: P.18
- Applicants (all ages) by POLAR3 quintile: P.19
- Applications (all ages) by POLAR3 quintile: P.20
- Applicants (all ages) by ethnic group: P.21
- Applications (all ages) by ethnic group: P.22

## P.1 18 year old applicants

Statistic	2012	2013	2014	2015	2016	2017
June deadline applicants	19,315	15,275	16,250	14,725	14,785	14,725
Placed June deadline applicants	2,435	2,585	2,935	3,340	3,130	2,680
All placed applicants	2,960	3,560	3,820	3,910	3,670	3,395
June deadline applicants per 10,000 population	249.7	200.7	215.8	192.2	197.2	198.7
Placed June deadline applicants per 10,000	31.5	34.0	39.0	43.6	41.8	36.1
All placed applicants per 10,000 population	38.3	46.8	50.7	51.1	49.0	45.9

## P.2 18 year old applications

Statistic	2012	2013	2014	2015	2016	2017
June deadline applications	21,070	16,245	17,310	15,685	15,745	15,715
Offers	10,700	12,205	13,535	12,460	12,525	12,775
Offer rate	50.8%	75.1%	78.2%	79.4%	79.5%	81.3%

### P.3 18 year old applicants by sex

Statistic	Sex	2012	2013	2014	2015	2016	2017
June deadline applicants	Men	8,255	6,685	7,170	6,320	6,230	6,005
	Women	11,065	8,585	9,085	8,400	8,555	8,720
Placed June deadline applicants	Men	1,080	1,265	1,430	1,605	1,420	1,150
	Women	1,350	1,320	1,505	1,735	1,715	1,525
All placed applicants	Men	1,345	1,745	1,845	1,845	1,650	1,445
	Women	1,615	1,815	1,975	2,065	2,025	1,955
June deadline applicants per 10,000 population	Men	208.1	171.3	185.2	161.1	162.2	158.1
	Women	293.5	231.7	248.1	224.8	234.1	241.5
Placed June deadline applicants per 10,000 population	Men	27.3	32.4	36.9	40.8	36.9	30.3
	Women	35.9	35.6	41.1	46.5	46.9	42.3
All placed applicants per 10,000 population	Men	33.9	44.7	47.7	47.0	42.9	38.0
	Women	42.9	49.0	54.0	55.3	55.4	54.1

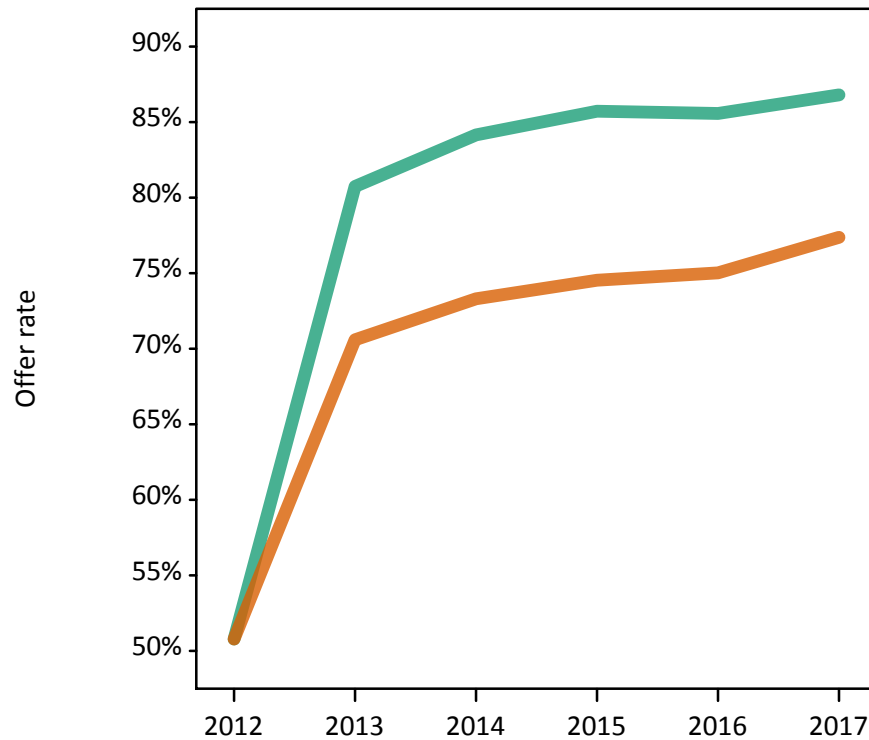
### P.4 18 year old applications by sex

Statistic	Sex	2012	2013	2014	2015	2016	2017
June deadline applications	Men	9,245	7,285	7,830	6,890	6,760	6,545
	Women	11,825	8,960	9,480	8,795	8,985	9,170
Offers	Men	4,695	5,880	6,590	5,905	5,785	5,680
	Women	6,005	6,325	6,945	6,555	6,740	7,095
Offer rate	Men	50.8%	80.7%	84.2%	85.7%	85.6%	86.8%
	Women	50.8%	70.6%	73.3%	74.5%	75.0%	77.4%
Average offer rate	Men	53.3%	81.7%	84.7%	86.2%	86.0%	87.2%
	Women	48.8%	69.8%	72.8%	74.1%	74.7%	77.1%
Percentage point difference between offer rate and average offer rate	Men	-2.5	-0.9	-0.6	-0.5	-0.4	-0.4
	Women	2.0	0.8	0.5	0.4	0.3	0.3
Contribution of group to the average offer rate	Men	0.611	0.622	0.628	0.622	0.609	0.600
	Women	0.696	0.693	0.693	0.704	0.706	0.714

### P.5 18 year old offer rate by sex

Note: The line for a group is not plotted when that group made fewer than 10 applications in any of the years from 2012-2017.

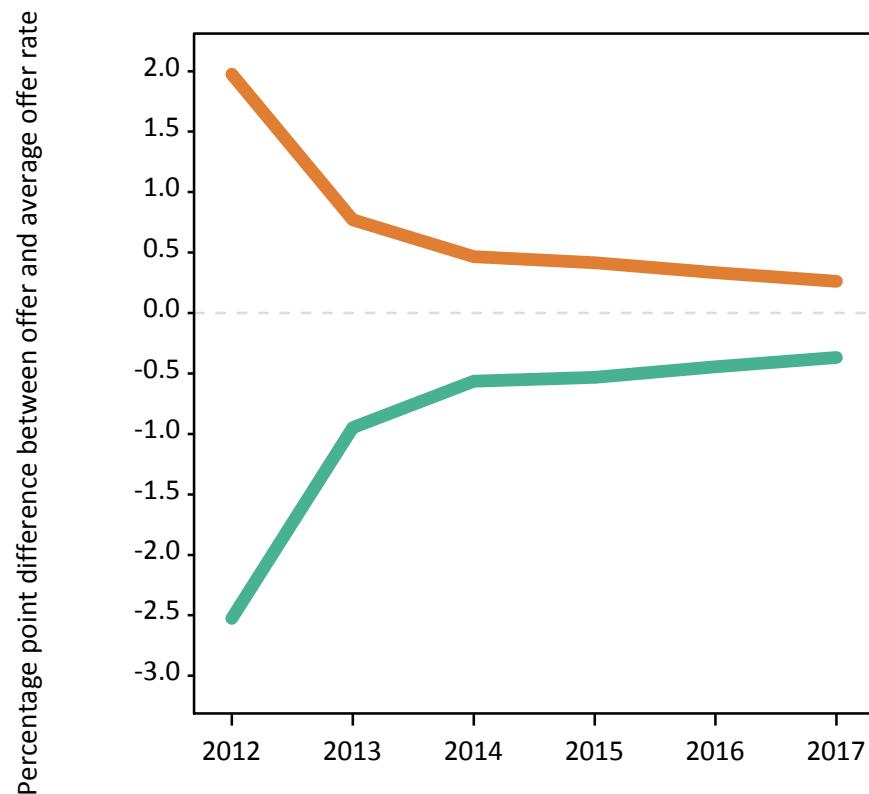
Men  
Women



### P.6 Percentage point difference between 18 year old offer rate and average offer rate by sex

Note: The line for a group is not plotted when that group made fewer than 50 applications in any of the years from 2012-2017.

Men  
Women



## P.7 18 year old applicants by POLAR3 quintile

Statistic	POLAR3 quintile	2012	2013	2014	2015	2016	2017
June deadline applicants	Quintile 1	2,975	2,360	2,740	2,520	2,565	2,425
	Quintile 2	3,660	2,995	3,135	2,965	2,980	2,970
	Quintile 3	3,915	3,125	3,395	3,020	3,025	3,070
	Quintile 4	3,985	3,165	3,345	2,990	2,970	3,015
	Quintile 5	4,750	3,615	3,605	3,210	3,200	3,220
Placed June deadline applicants	Quintile 1	330	390	495	575	550	455
	Quintile 2	450	480	550	670	615	515
	Quintile 3	485	520	575	655	620	530
	Quintile 4	525	555	625	660	615	580
	Quintile 5	645	635	690	775	720	595
All placed applicants	Quintile 1	400	520	620	660	645	585
	Quintile 2	550	670	705	780	715	660
	Quintile 3	580	705	735	790	720	665
	Quintile 4	645	750	800	765	745	705
	Quintile 5	785	905	955	910	840	770
June deadline applicants per 10,000 population	Quintile 1	208.8	169.2	196.8	180.0	190.1	182.4
	Quintile 2	244.0	203.1	214.3	199.7	206.0	209.0
	Quintile 3	253.4	205.0	225.7	196.6	201.3	206.2
	Quintile 4	251.3	202.2	217.1	191.1	192.4	197.5
	Quintile 5	282.7	218.6	221.1	191.8	193.8	196.0
Placed June deadline applicants per 10,000 population	Quintile 1	23.2	28.0	35.4	41.0	40.6	34.1
	Quintile 2	29.9	32.7	37.5	45.1	42.6	36.2
	Quintile 3	31.3	34.1	38.1	42.7	41.3	35.5
	Quintile 4	33.0	35.5	40.6	42.1	39.8	37.9
	Quintile 5	38.5	38.3	42.2	46.4	43.6	36.3
All placed applicants per 10,000 population	Quintile 1	28.1	37.4	44.4	47.0	47.7	44.1
	Quintile 2	36.5	45.4	48.2	52.6	49.3	46.6
	Quintile 3	37.6	46.2	49.0	51.5	47.8	44.6
	Quintile 4	40.5	48.1	52.0	49.0	48.3	46.3
	Quintile 5	46.7	54.9	58.4	54.4	50.7	46.9

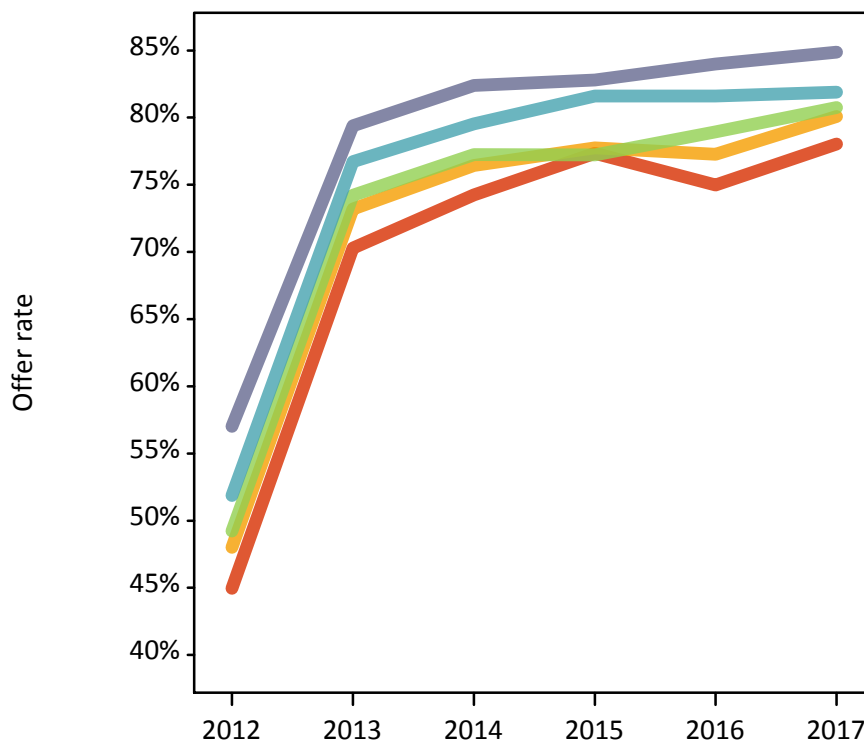
## P.8 18 year old applications by POLAR3 quintile

Statistic	POLAR3 quintile	2012	2013	2014	2015	2016	2017
June deadline applications	Quintile 1	3,275	2,535	2,980	2,720	2,755	2,640
	Quintile 2	4,010	3,185	3,345	3,175	3,190	3,210
	Quintile 3	4,275	3,300	3,600	3,185	3,225	3,255
	Quintile 4	4,330	3,350	3,550	3,180	3,165	3,185
	Quintile 5	5,145	3,840	3,800	3,405	3,370	3,395
Offers	Quintile 1	1,475	1,785	2,210	2,105	2,065	2,060
	Quintile 2	1,925	2,335	2,555	2,470	2,465	2,570
	Quintile 3	2,105	2,450	2,780	2,460	2,545	2,630
	Quintile 4	2,245	2,570	2,825	2,595	2,580	2,610
	Quintile 5	2,930	3,050	3,135	2,820	2,830	2,880
Offer rate	Quintile 1	45.0%	70.3%	74.3%	77.3%	75.0%	78.0%
	Quintile 2	48.0%	73.2%	76.4%	77.7%	77.3%	80.1%
	Quintile 3	49.2%	74.2%	77.3%	77.2%	78.9%	80.7%
	Quintile 4	51.9%	76.7%	79.5%	81.6%	81.6%	81.9%
	Quintile 5	57.0%	79.4%	82.4%	82.8%	84.0%	84.9%
Average offer rate	Quintile 1	46.1%	71.9%	75.7%	77.6%	76.9%	79.0%
	Quintile 2	48.5%	73.2%	75.9%	78.7%	77.9%	80.3%
	Quintile 3	49.9%	74.1%	77.4%	77.0%	78.6%	80.4%
	Quintile 4	51.9%	76.6%	79.2%	81.2%	80.8%	81.7%
	Quintile 5	55.2%	78.6%	81.9%	82.2%	82.9%	84.4%
Percentage point difference between offer rate and average offer rate	Quintile 1	-1.2	-1.6	-1.4	-0.3	-1.9	-0.9
	Quintile 2	-0.5	0.0	0.5	-1.0	-0.6	-0.2
	Quintile 3	-0.7	0.1	-0.2	0.2	0.3	0.3
	Quintile 4	-0.1	0.2	0.4	0.4	0.8	0.2
	Quintile 5	1.8	0.8	0.5	0.6	1.1	0.5
Contribution of group to the average offer rate	Quintile 1	0.206	0.214	0.229	0.226	0.228	0.220
	Quintile 2	0.229	0.241	0.237	0.251	0.249	0.252
	Quintile 3	0.239	0.246	0.243	0.246	0.244	0.249
	Quintile 4	0.242	0.251	0.245	0.248	0.245	0.247
	Quintile 5	0.304	0.306	0.295	0.292	0.288	0.291

### P.9 18 year old offer rate by POLAR3 quintile

Note: The line for a group is not plotted when that group made fewer than 10 applications in any of the years from 2012-2017.

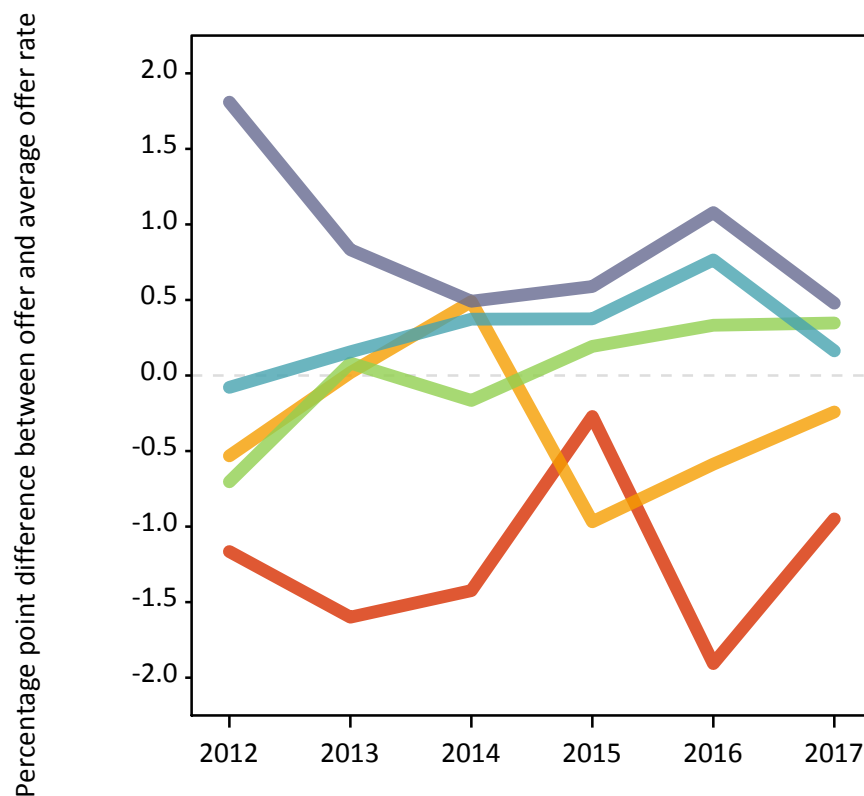
- Quintile 1
- Quintile 2
- Quintile 3
- Quintile 4
- Quintile 5



### P.10 Percentage point difference between 18 year old offer rate and average offer rate by POLAR3 quintile

Note: The line for a group is not plotted when that group made fewer than 50 applications in any of the years from 2012-2017.

- Quintile 1
- Quintile 2
- Quintile 3
- Quintile 4
- Quintile 5



## P.11 18 year old applicants by ethnic group

Statistic	Ethnic group	2012	2013	2014	2015	2016	2017
June deadline applicants	Asian	1,520	1,155	1,305	1,255	1,420	1,495
	Black	440	340	350	360	370	340
	Mixed	600	445	560	470	510	525
	White	16,640	13,235	13,945	12,535	12,370	12,250
	Other	70	65	70	65	70	80
Placed June deadline applicants	Asian	125	160	170	210	215	230
	Black	30	50	65	70	55	60
	Mixed	80	80	130	135	115	105
	White	2,195	2,280	2,555	2,900	2,720	2,265
	Other	5	10	10	10	15	15
All placed applicants	Asian	200	265	280	280	295	340
	Black	55	90	100	90	75	85
	Mixed	100	120	170	160	140	130
	White	2,600	3,055	3,255	3,360	3,130	2,820
	Other	10	20	15	15	25	20
June deadline applicants per 10,000 population	Asian	234.6	175.0	192.3	177.2	197.2	203.2
	Black	157.0	114.5	115.1	112.8	117.9	108.7
	Mixed	231.1	163.8	194.3	152.4	161.4	163.6
	White	257.7	210.3	226.0	201.2	204.5	206.4
	Other	81.4	72.8	74.1	69.5	72.4	77.7
Placed June deadline applicants per 10,000 population	Asian	19.0	24.0	24.9	29.7	29.9	31.4
	Black	11.0	17.5	21.8	22.6	17.6	19.7
	Mixed	30.3	29.2	44.5	43.8	37.2	32.1
	White	34.0	36.2	41.4	46.5	45.0	38.1
	Other	5.7	13.2	10.7	12.4	16.1	15.5
All placed applicants per 10,000 population	Asian	30.6	39.9	41.3	39.7	40.7	46.1
	Black	18.8	29.6	32.3	27.6	23.6	26.7
	Mixed	37.6	45.1	58.7	51.2	43.9	41.1
	White	40.3	48.6	52.7	53.9	51.8	47.5
	Other	9.0	22.1	14.0	14.5	23.1	18.4

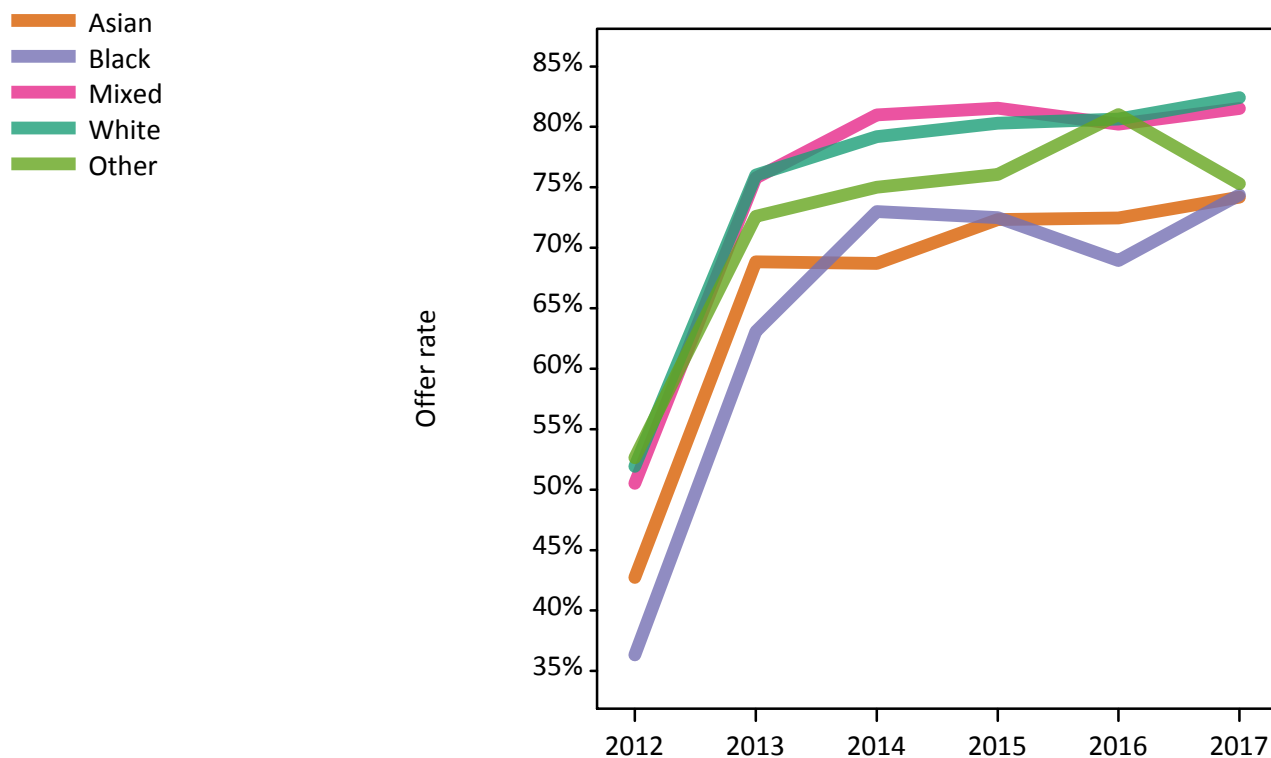


## P.12 18 year old applications by ethnic group

Statistic	Ethnic group	2012	2013	2014	2015	2016	2017
June deadline applications	Asian	1,700	1,250	1,420	1,360	1,570	1,640
	Black	465	350	375	370	380	355
	Mixed	660	460	590	505	540	550
	White	18,130	14,075	14,820	13,335	13,120	13,050
	Other	75	75	75	70	80	85
Offers	Asian	725	860	975	985	1,140	1,220
	Black	170	220	275	270	260	265
	Mixed	335	345	475	410	435	450
	White	9,415	10,700	11,735	10,710	10,580	10,755
	Other	40	55	55	55	65	65
Offer rate	Asian	42.7%	68.8%	68.7%	72.3%	72.5%	74.2%
	Black	36.3%	63.1%	73.0%	72.5%	68.9%	74.4%
	Mixed	50.5%	75.8%	81.0%	81.5%	80.2%	81.5%
	White	51.9%	76.0%	79.2%	80.3%	80.6%	82.4%
	Other	52.6%	72.6%	75.0%	76.1%	81.0%	75.3%
Average offer rate	Asian	46.6%	73.3%	72.8%	76.2%	75.5%	77.2%
	Black	47.6%	73.1%	76.6%	78.1%	76.1%	79.2%
	Mixed	52.7%	76.8%	81.6%	81.7%	81.0%	81.5%
	White	51.2%	75.3%	78.6%	79.7%	80.1%	81.9%
	Other	54.3%	80.3%	82.4%	79.0%	75.4%	80.7%
Percentage point difference between offer rate and average offer rate	Asian	-3.8	-4.4	-4.1	-3.9	-3.1	-3.0
	Black	-11.2	-10.0	-3.6	-5.6	-7.2	-4.8
	Mixed	-2.1	-1.1	-0.7	-0.1	-0.8	-0.0
	White	0.8	0.7	0.6	0.6	0.5	0.6
	Other	-1.7	-7.7	-7.4	-3.0	5.7	-5.4
Contribution of group to the average offer rate	Asian	0.206	0.204	0.206	0.198	0.225	0.238
	Black	0.078	0.087	0.068	0.092	0.078	0.080
	Mixed	0.080	0.086	0.083	0.082	0.087	0.082
	White	0.877	0.884	0.872	0.867	0.854	0.852
	Other	0.048	0.063	0.069	0.081	0.080	0.063

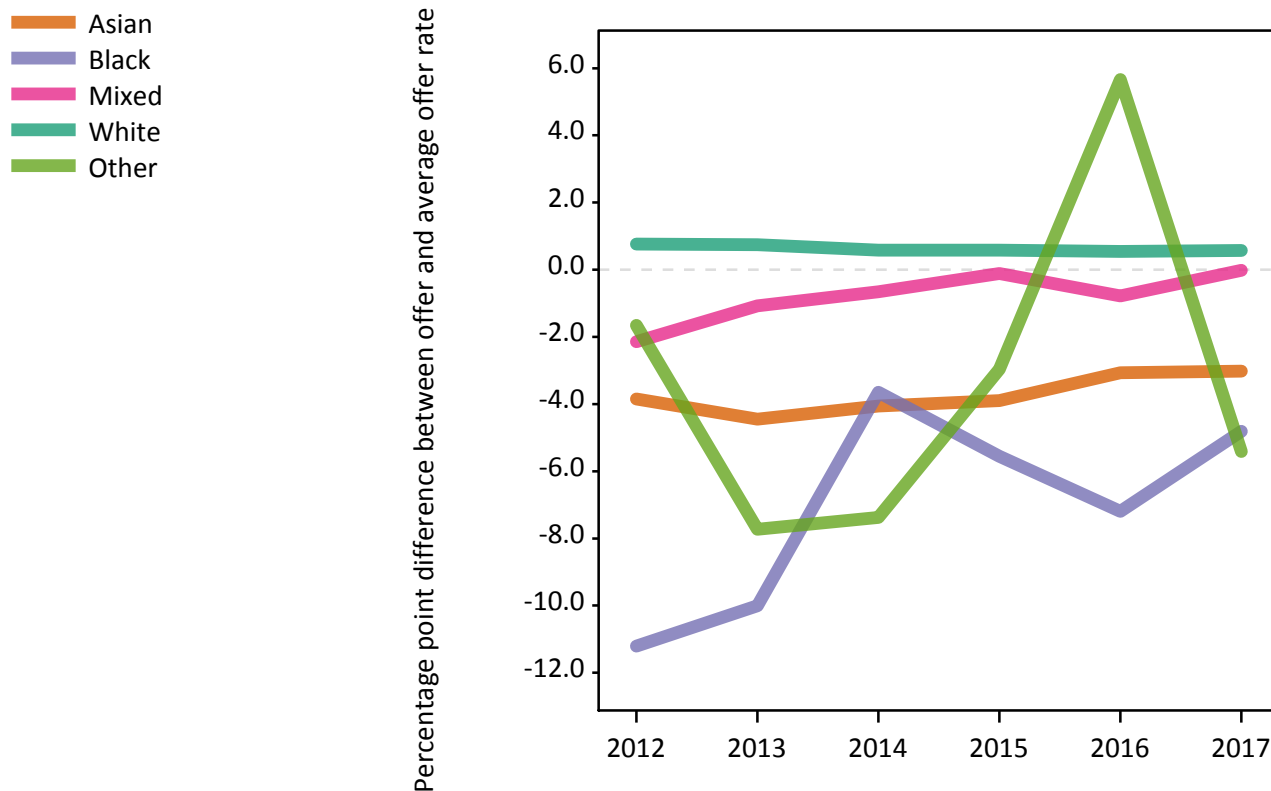
### P.13 18 year old offer rate by ethnic group

Note: The line for a group is not plotted when that group made fewer than 10 applications in any of the years from 2012-2017.



### P.14 Percentage point difference between 18 year old offer rate and average offer rate by ethnic group

Note: The line for a group is not plotted when that group made fewer than 50 applications in any of the years from 2012-2017.



### P.15 Applicants (all ages)

Statistic	2012	2013	2014	2015	2016	2017
June deadline applicants	34,005	28,075	28,990	25,600	25,280	24,575
Placed June deadline applicants	4,570	4,935	5,220	5,480	5,035	4,505
All placed applicants	5,810	6,855	6,995	6,715	6,120	5,890

### P.16 Applications (all ages)

Statistic	2012	2013	2014	2015	2016	2017
June deadline applications	37,655	30,395	31,260	27,560	27,240	26,490
Offers	17,070	20,075	21,590	19,650	19,220	19,325
Offer rate	45.3%	66.1%	69.1%	71.3%	70.5%	72.9%

### P.17 Applicants (all ages) by sex

Statistic	Sex	2012	2013	2014	2015	2016	2017
June deadline applicants	Men	15,635	13,045	13,570	11,540	11,100	10,575
	Women	18,370	15,030	15,425	14,060	14,180	14,000
Placed June deadline applicants	Men	2,295	2,615	2,705	2,800	2,420	2,110
	Women	2,275	2,315	2,515	2,680	2,615	2,395
All placed applicants	Men	2,985	3,685	3,675	3,430	2,965	2,755
	Women	2,825	3,170	3,320	3,285	3,155	3,135

### P.18 Applications (all ages) by sex

Statistic	Sex	2012	2013	2014	2015	2016	2017
June deadline applications	Men	17,815	14,440	15,035	12,720	12,220	11,670
	Women	19,840	15,955	16,225	14,845	15,020	14,820
Offers	Men	8,275	10,320	11,245	9,955	9,445	9,165
	Women	8,800	9,760	10,345	9,695	9,775	10,160
Offer rate	Men	46.4%	71.5%	74.8%	78.3%	77.3%	78.5%
	Women	44.3%	61.2%	63.8%	65.3%	65.1%	68.6%

### P.19 Applicants (all ages) by POLAR3 quintile

Statistic	POLAR3 quintile	2012	2013	2014	2015	2016	2017
June deadline applicants	Quintile 1	6,000	4,895	5,410	4,815	4,770	4,415
	Quintile 2	6,695	5,570	5,730	5,225	5,275	5,020
	Quintile 3	6,825	5,610	5,895	5,165	5,050	5,060
	Quintile 4	6,700	5,660	5,740	4,960	4,910	4,835
	Quintile 5	7,720	6,295	6,160	5,405	5,215	5,195
Placed June deadline applicants	Quintile 1	715	850	940	990	960	815
	Quintile 2	840	915	970	1,090	1,010	870
	Quintile 3	895	980	1,015	1,065	965	885
	Quintile 4	935	1,015	1,080	1,055	955	905
	Quintile 5	1,170	1,160	1,210	1,275	1,135	1,020
All placed applicants	Quintile 1	925	1,155	1,245	1,200	1,160	1,080
	Quintile 2	1,090	1,290	1,290	1,330	1,230	1,170
	Quintile 3	1,125	1,365	1,345	1,350	1,160	1,150
	Quintile 4	1,195	1,385	1,445	1,285	1,185	1,160
	Quintile 5	1,465	1,650	1,655	1,545	1,370	1,320

### P.20 Applications (all ages) by POLAR3 quintile

Statistic	POLAR3 quintile	2012	2013	2014	2015	2016	2017
June deadline applications	Quintile 1	6,735	5,385	5,940	5,240	5,195	4,850
	Quintile 2	7,470	6,005	6,180	5,650	5,695	5,450
	Quintile 3	7,515	6,020	6,355	5,505	5,440	5,455
	Quintile 4	7,360	6,130	6,140	5,345	5,270	5,150
	Quintile 5	8,505	6,815	6,585	5,785	5,590	5,530
Offers	Quintile 1	2,630	3,195	3,725	3,465	3,365	3,285
	Quintile 2	3,150	3,760	4,095	3,915	3,855	3,855
	Quintile 3	3,270	4,005	4,365	3,870	3,825	3,925
	Quintile 4	3,515	4,250	4,405	3,995	3,890	3,905
	Quintile 5	4,465	4,840	4,955	4,385	4,240	4,315
Offer rate	Quintile 1	39.1%	59.3%	62.7%	66.1%	64.8%	67.7%
	Quintile 2	42.2%	62.6%	66.2%	69.3%	67.7%	70.7%
	Quintile 3	43.5%	66.6%	68.7%	70.3%	70.3%	72.0%
	Quintile 4	47.8%	69.3%	71.8%	74.8%	73.8%	75.8%
	Quintile 5	52.5%	71.1%	75.3%	75.8%	75.9%	78.0%

## P.21 Applicants (all ages) by ethnic group

Statistic	Ethnic group	2012	2013	2014	2015	2016	2017
June deadline applicants	Asian	3,160	2,500	2,645	2,480	2,650	2,760
	Black	1,670	1,275	1,210	1,165	1,210	1,145
	Mixed	1,160	900	1,080	965	955	925
	White	27,675	23,095	23,785	20,695	20,175	19,455
	Other	230	190	195	185	185	190
Placed June deadline applicants	Asian	265	335	330	385	390	430
	Black	140	170	160	185	160	160
	Mixed	160	170	230	245	200	185
	White	3,965	4,195	4,450	4,600	4,240	3,680
	Other	20	40	30	40	35	40
All placed applicants	Asian	475	625	600	575	580	660
	Black	240	285	275	250	225	255
	Mixed	215	250	320	310	265	245
	White	4,790	5,585	5,715	5,490	4,970	4,650
	Other	40	65	50	55	55	55

## P.22 Applications (all ages) by ethnic group

Statistic	Ethnic group	2012	2013	2014	2015	2016	2017
June deadline applications	Asian	3,575	2,740	2,885	2,710	2,940	3,055
	Black	1,850	1,385	1,325	1,250	1,285	1,230
	Mixed	1,290	970	1,170	1,050	1,025	990
	White	30,560	24,960	25,590	22,230	21,670	20,880
	Other	255	215	210	205	205	215
Offers	Asian	1,335	1,625	1,750	1,750	1,925	2,070
	Black	480	560	590	625	605	570
	Mixed	570	635	825	765	710	715
	White	14,540	17,045	18,260	16,295	15,765	15,775
	Other	95	140	125	130	140	130
Offer rate	Asian	37.3%	59.3%	60.6%	64.6%	65.5%	67.8%
	Black	26.1%	40.4%	44.7%	50.1%	47.2%	46.1%
	Mixed	44.1%	65.6%	70.8%	72.9%	69.0%	72.1%
	White	47.6%	68.3%	71.3%	73.3%	72.8%	75.5%
	Other	37.8%	64.4%	58.8%	63.9%	68.9%	60.2%

## Technical Notes and Definitions

### UCAS undergraduate scheme

#### Adjustment

Adjustment allows applicants who have met and exceeded the terms of their conditional firm offer to seek and find a place at another provider whilst keeping their place at their original firm choice provider.

#### Clearing

Clearing is a route for applicants that are not placed and holding no offers to find a place on courses with vacancies.

#### Cycle year

The UCAS application cycle which runs from September to October the following year. For example the 2017 cycle runs from September 2016 through to October 2017.

#### End of cycle

The point in the cycle to which the numbers in this report refer, and the point at which the cycle is closed such that no more applications or offers can be made, and no more applicants can be placed. Numbers reported at the end of cycle exclude information on a small number of applicants who cancelled during the cycle.

#### Extra

Applicants who are unsuccessful in obtaining an offer or decline all offers may be eligible to apply through Extra, where they can apply to one further course at a time. Extra operates from 25 February until early July. It provides applicants who are eligible the possibility of obtaining an offer before exam results are published and Clearing starts.

#### June 30 deadline

The deadline for main scheme applications. Applicants who apply after this date will go directly into Clearing.

#### Record of Prior Acceptance (RPA)

RPA is an acceptance route used when a provider informs UCAS of applicants it has accepted outside of the normal application process (e.g. individuals who have applied directly to the provider).

### Reporting groups

#### Ethnic group

High level grouping of ethnic origin as declared by the applicant: 'White', 'Black', 'Asian', 'Mixed', 'Other', 'Unknown'. Applicants who declare themselves as 'Unknown' ethnic origin are not reported in these tables, but are included in the associated csv data file.

#### POLAR3 quintile

Developed by HEFCE, POLAR3 classifies small areas across the UK into five groups according to their level of young participation in Higher Education. Each of these groups represents around 20 per cent of young people and is ranked from Quintile 1 (areas with the lowest young participation rates, considered as the most disadvantaged) to Quintile 5 (highest young participation rates, considered most advantaged). POLAR3 is based on the participation rates of young people between 2005 and 2009 who entered Higher Education between 2005-06 and 2010-11, therefore is most suitable for applicants aged 19 and under. These groups are assigned using the postcode declared by the applicant at the time of their application. If a UK postcode is invalid, considered unsafe for measurement or there is no link to Census geography possible then the applicant is not assigned to a quintile. Applicants with no POLAR3 quintile are not reported.

#### Sex

Sex as declared by the applicant.

### **SIMD 2016 quintile**

Scottish index of multiple deprivation (SIMD) identifies small area concentrations of multiple deprivation across all of Scotland, providing a relative measure of deprivation amongst 6505 small areas (data zones) based on 7 socio-economic domains. These small areas are classified into five groups ranked from Quintile 1 (considered the most deprived) to Quintile 5 (considered least deprived), with equal populations in each quintile. Quintiles are assigned using the postcode declared by the applicant, applicants declaring invalid postcodes are classified as 'Not assigned' and are not reported.

SIMD is only defined for applicants domiciled in Scotland, therefore any applicants domiciled outside of Scotland cannot be assigned to an SIMD quintile and so are not reported for this measure.

SIMD is only reported for providers in Scotland. Application and entry rates by SIMD are reported in the 2017 End of Cycle Report and the 2017 cycle January deadline application rate report.

### **Statistics reported in the tables**

#### **All placed applicants**

The number of applicants placed for entry into higher education at the provider through one of their choices, including any choices made through Extra, or via Adjustment, Clearing or RPA.

#### **All placed applicants per 10,000 population**

The number of total UK domiciled 18 year old placed applicants for entry into higher education at the provider divided by the number of UK 18 year olds in the population, multiplied by 10,000. This gives the number of 18 year olds, for every 10,000 in the population, that were placed at the provider through one of their choices, including any choices made through Extra, or via Adjustment, Clearing or RPA. It is an alternative way of expressing the entry rate to a provider. By referencing the underlying population this statistic shows how the number of placed applicants is changing in relation to the available pool of potential applicants and so gives the chance that somebody from the group will be placed at a provider.

This statistic is only reported for 18 year olds.

#### **Average offer rate**

The offer rate that you might expect if the predicted grades and subject choice of applicants were the only factors that influenced whether an applicant was made an offer by the provider. The average offer rate is calculated by dividing applicants according to their specific combination of grades (for A levels the best three predicted grades are used, for BTECs, International Baccalaureate and Scottish Highers and Advanced Highers, predicted grades along with any grades already achieved upon applying are used) and subject choice. For each combination the number of main scheme offers is divided by the number of main scheme applications, to give an overall offer rate. This is then multiplied by the number of applications made by the group for which the average offer rate is being calculated (for example POLAR3 quintile 1), to give an average number of offers for that group. These average number of offers are then added together across all combinations of predicted grade and subject and divided by the number of main scheme applications from the group to give the average offer rate.

The average offer rate does not attempt to control for any other factors that may play a part in the decision to make an offer, such as the subject of the qualifications studied, their relevance to a course, or the grade in each subject; higher numbers of A levels being studied; the exact profile of grades predicted; personal statements; teacher references; interviews; or any other criteria (such as work experience or portfolios) that may be part of the admissions decision.

This statistic is only reported for 18 year olds.



### Contribution of group to the average offer rate

The way in which the average offer rate is defined means that the pattern of application and offers of a group (for example POLAR3 quintile 1) will always contribute, in part, to the average offer rate for that group. When this contribution is large, the average offer rate will mainly reflect the patterns for the group, meaning that the value of the average offer rate will be similar to the offer rate, the percentage point difference statistic will be small, and any real difference between the offer rate and what might be expected given the predicted grades and subject choices of the applicants will be difficult to detect.

Values of the contribution of group to the average offer rate range between 0 and 1. The closer the value is to 1 the greater the contribution a group makes to its own average offer rate.

This statistic is only reported for 18 year olds.

### Placed June deadline applicants

An applicant who has been placed for entry into higher education at the provider through a June deadline application.

### Placed June deadline applicants per 10,000 population

The number of UK domiciled 18 year old placed June deadline applicants at the provider divided by the number of UK 18 year olds in the population, multiplied by 10,000. This gives the number of 18 year olds, for every 10,000 in the population, that were placed at the provider through one of their June deadline applications. It is an alternative way of expressing the entry rate to a provider, but for placed June deadline applicants only. By referencing the underlying population this statistic shows how the number of placed June deadline applicants is changing in relation to the available pool of potential 18 year old applicants and so gives the chance that somebody from the group will be placed at a provider through a June deadline application.

This statistic is only reported for 18 year olds.

### June deadline applications

An application (or choice) to a course in higher education to the provider that is made by the June 30 deadline. Each applicant can make up to five choices this way. The number of June deadline applications does not include choices made through the following routes: Clearing, Extra, Adjustment and RPAs. Applications made to October deadline courses received after the October deadline are not included in these statistics.

### June deadline applicants

The number of applicants that made at least one application to the provider by the June 30 deadline.

### June deadline applicants per 10,000 population

The number of UK domiciled 18 year old June deadline applicants to the provider divided by the number of UK 18 year olds in the population, multiplied by 10,000. This gives the number of 18 year olds, for every 10,000 in the population, who applied by the June 30 deadline. It is equivalent to the application rate. By referencing the underlying population this statistic shows how the number of June deadline applicants is changing in relation to the available pool of potential 18 year old applicants and so gives the chance that somebody from the group will apply to a provider by the June 30 deadline.

This statistic is only reported for 18 year olds.

### Offers

An offer is defined as a provider's decision in response to an application to offer a place to an applicant, often subject to the applicant satisfying academic and/or other criteria, via a June deadline application (i.e. does not cover choices made through the following routes: Clearing, Extra, Adjustment and RPAs).

### Offer rate

The number of offers made divided by the number of June deadline applications. This gives the proportion of all June deadline applications to the provider that received an offer.

### Percentage point difference between offer rate and average offer rate

The offer rate minus the average offer rate.

The percentage point difference can be compared to the expected range of statistical variation resulting from the calculation of the average offer rate using the Average Offer Rate Lookup Table. Where the value of the percentage point difference lies outside of this range, the percentage point difference may be considered to represent a real difference between the offer rate and the average offer rate.

### Other definitions

#### Age

This analysis uses country-specific age definitions that align with the cut off points for school and college cohorts within the different administrations of the UK. For England and Wales, ages are defined on the 31 August, for Northern Ireland on the 1 July and for Scotland on the 28 February the following year. Defining ages in this way matches the assignment of children to school cohorts. For applicants outside of the UK a cohort cut off of 31 August has been used. Numbers for applicants aged 17 and under are included in the tables that report numbers for all age groups. Providers in Scotland typically receive a higher proportion of applicants aged 17 and under compared to providers elsewhere in the UK.

#### Provider

A higher education provider - a university or college.

#### UK domiciled

Declared area of permanent residence within England, Northern Ireland, Scotland and Wales. Applicants from the Channel Islands and Isle of Man are not included.