

L14 Lancaster University

Cycle years: 2012 - 2017

Cycle Reference Point: End of Cycle

Applicant coverage: UK domiciled

Reporting groups: Sex, POLAR3, ethnic group

Applicant statistics: June deadline applicants, placed June deadline applicants, all placed applicants, June deadline applicants per 10,000 population, placed June deadline applicants per 10,000 population, all placed applicants per 10,000 population

Application statistics: June deadline applications, offers, offer rate, average offer rate, percentage point difference between offer rate and average offer rate, contribution of group to the average offer rate

Non-disclosure controls: To avoid the disclosure of information about any individual the following measures are taken

- Applicants, placed applicants, applications and offers are rounded to the nearest 5.
- Applicants/placed applicants per 10,000 population figures are reported as 0 if the applicant/placed applicant figures are rounded to 0.
- All statistics related to the offer rate are not reported when the number of applications for a group is less than 10. The percentage point difference between the offer rate and the average offer rate is not reported when the number of applications for a group is less than 50.
- Offer rates are reported as 0% if there are fewer than 5 offers, and 100% if the number of offers is within 5 of the number of applications. When the offer rate is reported as 0% or 100%, it is reported in italics.

Contents:

- 18 year old applicants: P.1
- 18 year old applications: P.2
- 18 year old applicants by sex: P.3
- 18 year old applications by sex: P.4
- 18 year old applicants by POLAR3 quintile: P.7
- 18 year old applications by POLAR3 quintile: P.8
- 18 year old applicants by ethnic group: P.11
- 18 year old applications by ethnic group: P.12
- Applicants (all ages): P.15
- Applications (all ages): P.16
- Applicants (all ages) by sex: P.17
- Applications (all ages) by sex: P.18
- Applicants (all ages) by POLAR3 quintile: P.19
- Applications (all ages) by POLAR3 quintile: P.20
- Applicants (all ages) by ethnic group: P.21
- Applications (all ages) by ethnic group: P.22

P.1 18 year old applicants

Statistic	2012	2013	2014	2015	2016	2017
June deadline applicants	9,930	8,485	7,835	9,440	9,020	9,695
Placed June deadline applicants	1,570	1,545	1,255	1,510	1,670	1,845
All placed applicants	1,695	1,785	1,580	1,715	1,890	2,075
June deadline applicants per 10,000 population	128.4	111.5	104.0	123.2	120.4	130.9
Placed June deadline applicants per 10,000	20.3	20.3	16.7	19.7	22.3	24.9
All placed applicants per 10,000 population	21.9	23.5	21.0	22.4	25.2	28.0

P.2 18 year old applications

Statistic	2012	2013	2014	2015	2016	2017
June deadline applications	10,270	8,760	8,080	9,740	9,315	9,965
Offers	9,335	7,975	7,200	8,355	8,495	9,095
Offer rate	90.9%	91.0%	89.1%	85.8%	91.2%	91.3%

P.3 18 year old applicants by sex

Statistic	Sex	2012	2013	2014	2015	2016	2017
June deadline applicants	Men	5,140	4,255	3,850	4,675	4,535	5,060
	Women	4,790	4,230	3,985	4,770	4,485	4,635
Placed June deadline applicants	Men	790	750	640	730	800	910
	Women	780	795	615	780	865	935
All placed applicants	Men	850	875	815	835	935	1,025
	Women	845	910	765	880	955	1,050
June deadline applicants per 10,000 population	Men	129.7	109.0	99.5	119.1	118.1	133.2
	Women	127.1	114.1	108.8	127.6	122.7	128.4
Placed June deadline applicants per 10,000 population	Men	20.0	19.2	16.5	18.7	20.9	24.0
	Women	20.7	21.5	16.8	20.8	23.7	25.9
All placed applicants per 10,000 population	Men	21.4	22.4	21.1	21.3	24.3	26.9
	Women	22.5	24.6	20.8	23.6	26.2	29.1

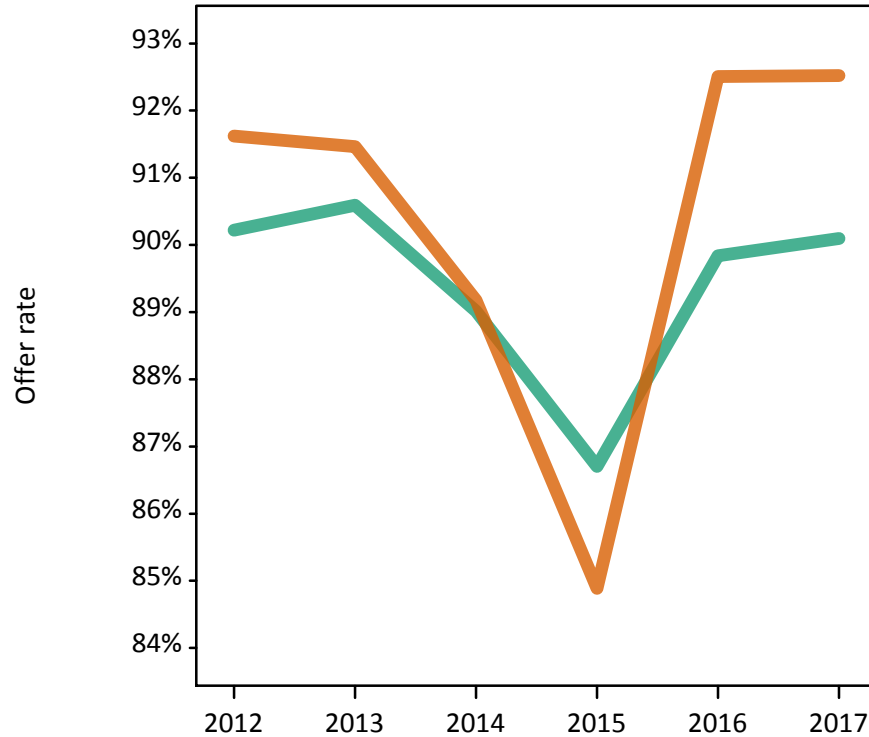
P.4 18 year old applications by sex

Statistic	Sex	2012	2013	2014	2015	2016	2017
June deadline applications	Men	5,320	4,400	3,985	4,835	4,685	5,180
	Women	4,955	4,360	4,095	4,905	4,630	4,785
Offers	Men	4,800	3,985	3,550	4,195	4,210	4,670
	Women	4,540	3,985	3,650	4,165	4,285	4,430
Offer rate	Men	90.2%	90.6%	89.0%	86.7%	89.8%	90.1%
	Women	91.6%	91.5%	89.2%	84.9%	92.5%	92.5%
Average offer rate	Men	90.4%	90.9%	89.3%	87.0%	90.3%	90.4%
	Women	91.4%	91.1%	88.9%	84.6%	92.1%	92.2%
Percentage point difference between offer rate and average offer rate	Men	-0.2	-0.3	-0.2	-0.3	-0.4	-0.3
	Women	0.2	0.3	0.2	0.3	0.4	0.3
Contribution of group to the average offer rate	Men	0.645	0.651	0.649	0.651	0.653	0.667
	Women	0.619	0.647	0.658	0.656	0.649	0.640

P.5 18 year old offer rate by sex

Note: The line for a group is not plotted when that group made fewer than 10 applications in any of the years from 2012-2017.

Men
Women



P.6 Percentage point difference between 18 year old offer rate and average offer rate by sex

Note: The line for a group is not plotted when that group made fewer than 50 applications in any of the years from 2012-2017.

Men
Women



P.7 18 year old applicants by POLAR3 quintile

Statistic	POLAR3 quintile	2012	2013	2014	2015	2016	2017
June deadline applicants	Quintile 1	875	780	730	940	935	995
	Quintile 2	1,350	1,175	1,140	1,355	1,245	1,380
	Quintile 3	1,870	1,600	1,470	1,810	1,790	1,865
	Quintile 4	2,450	2,055	1,870	2,400	2,260	2,315
	Quintile 5	3,370	2,865	2,600	2,920	2,775	3,130
Placed June deadline applicants	Quintile 1	155	145	120	140	155	195
	Quintile 2	210	210	185	195	225	245
	Quintile 3	310	315	240	310	335	350
	Quintile 4	400	390	340	410	415	485
	Quintile 5	495	490	370	450	535	570
All placed applicants	Quintile 1	155	165	135	160	170	215
	Quintile 2	225	235	235	230	250	275
	Quintile 3	345	360	305	340	380	385
	Quintile 4	430	435	415	460	470	540
	Quintile 5	545	590	485	530	615	655
June deadline applicants per 10,000 population	Quintile 1	61.3	56.1	52.5	67.1	69.2	74.7
	Quintile 2	90.0	79.7	78.1	91.2	86.0	97.1
	Quintile 3	121.0	104.8	97.5	117.9	119.0	125.2
	Quintile 4	154.5	131.5	121.5	153.4	146.4	151.4
	Quintile 5	200.7	173.3	159.4	174.5	168.1	190.6
Placed June deadline applicants per 10,000 population	Quintile 1	10.8	10.5	8.5	10.0	11.6	14.7
	Quintile 2	14.1	14.3	12.7	13.2	15.6	17.3
	Quintile 3	20.1	20.5	15.9	20.3	22.4	23.4
	Quintile 4	25.1	24.9	22.0	26.1	26.8	31.8
	Quintile 5	29.6	29.5	22.7	27.0	32.4	34.8
All placed applicants per 10,000 population	Quintile 1	11.0	11.8	9.8	11.3	12.6	16.2
	Quintile 2	14.9	15.9	15.9	15.4	17.3	19.5
	Quintile 3	22.3	23.7	20.1	22.1	25.3	26.0
	Quintile 4	27.0	27.8	27.1	29.4	30.5	35.2
	Quintile 5	32.3	35.6	29.7	31.6	37.2	39.9

P.8 18 year old applications by POLAR3 quintile

Statistic	POLAR3 quintile	2012	2013	2014	2015	2016	2017
June deadline applications	Quintile 1	920	820	745	980	975	1,030
	Quintile 2	1,395	1,220	1,190	1,395	1,280	1,415
	Quintile 3	1,920	1,655	1,510	1,870	1,835	1,915
	Quintile 4	2,555	2,125	1,940	2,490	2,335	2,370
	Quintile 5	3,470	2,940	2,670	2,985	2,870	3,215
Offers	Quintile 1	785	710	635	815	830	895
	Quintile 2	1,235	1,095	1,045	1,150	1,145	1,260
	Quintile 3	1,730	1,485	1,345	1,580	1,650	1,735
	Quintile 4	2,335	1,940	1,725	2,160	2,150	2,175
	Quintile 5	3,245	2,735	2,430	2,640	2,705	3,015
Offer rate	Quintile 1	85.4%	86.7%	84.9%	82.9%	85.1%	86.9%
	Quintile 2	88.5%	90.0%	87.8%	82.4%	89.5%	89.0%
	Quintile 3	90.0%	89.7%	89.1%	84.4%	89.9%	90.6%
	Quintile 4	91.5%	91.4%	88.8%	86.7%	91.9%	91.7%
	Quintile 5	93.5%	93.2%	91.1%	88.4%	94.2%	93.8%
Average offer rate	Quintile 1	86.9%	88.2%	86.0%	84.1%	86.9%	87.2%
	Quintile 2	88.9%	89.4%	88.4%	82.8%	90.3%	89.8%
	Quintile 3	90.0%	90.3%	89.4%	84.4%	89.9%	90.9%
	Quintile 4	91.2%	91.0%	88.9%	86.7%	92.0%	92.0%
	Quintile 5	93.1%	93.0%	90.3%	87.8%	93.2%	92.9%
Percentage point difference between offer rate and average offer rate	Quintile 1	-1.5	-1.5	-1.2	-1.2	-1.8	-0.4
	Quintile 2	-0.4	0.6	-0.6	-0.4	-0.8	-0.8
	Quintile 3	0.1	-0.6	-0.2	0.0	0.1	-0.3
	Quintile 4	0.2	0.4	-0.1	0.0	-0.1	-0.3
	Quintile 5	0.4	0.2	0.8	0.6	1.0	0.9
Contribution of group to the average offer rate	Quintile 1	0.196	0.200	0.203	0.208	0.198	0.208
	Quintile 2	0.217	0.226	0.237	0.228	0.227	0.232
	Quintile 3	0.264	0.267	0.270	0.266	0.278	0.270
	Quintile 4	0.316	0.315	0.316	0.324	0.321	0.303
	Quintile 5	0.407	0.409	0.411	0.385	0.383	0.399

P.9 18 year old offer rate by POLAR3 quintile

Note: The line for a group is not plotted when that group made fewer than 10 applications in any of the years from 2012-2017.

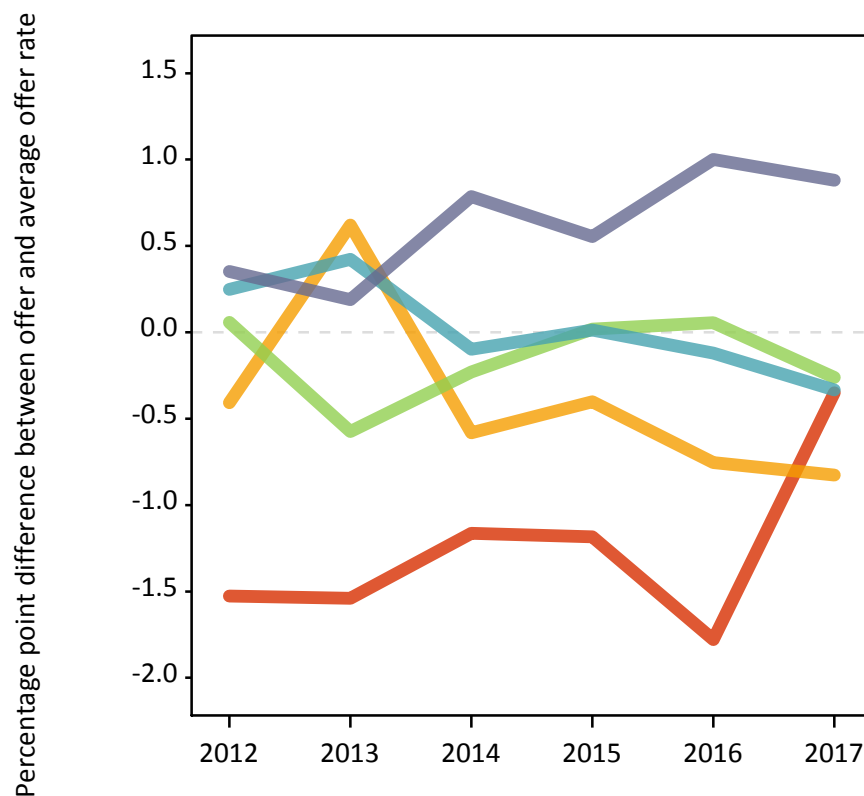
- Quintile 1
- Quintile 2
- Quintile 3
- Quintile 4
- Quintile 5



P.10 Percentage point difference between 18 year old offer rate and average offer rate by POLAR3 quintile

Note: The line for a group is not plotted when that group made fewer than 50 applications in any of the years from 2012-2017.

- Quintile 1
- Quintile 2
- Quintile 3
- Quintile 4
- Quintile 5



P.11 18 year old applicants by ethnic group

Statistic	Ethnic group	2012	2013	2014	2015	2016	2017
June deadline applicants	Asian	665	625	650	945	790	995
	Black	205	235	260	295	265	320
	Mixed	285	260	235	320	300	385
	White	8,690	7,280	6,610	7,740	7,535	7,845
	Other	45	35	50	80	75	85
Placed June deadline applicants	Asian	75	60	70	90	90	110
	Black	20	35	25	25	25	30
	Mixed	35	35	45	50	35	60
	White	1,430	1,410	1,110	1,335	1,505	1,615
	Other	5	5	5	5	5	10
All placed applicants	Asian	80	85	110	115	120	150
	Black	30	45	45	40	40	50
	Mixed	40	40	60	65	45	70
	White	1,535	1,605	1,350	1,480	1,665	1,770
	Other	5	5	5	10	10	10
June deadline applicants per 10,000 population	Asian	102.5	94.5	95.6	133.5	110.1	135.1
	Black	73.1	79.8	85.8	93.0	85.3	101.4
	Mixed	109.4	95.4	81.3	103.5	96.0	119.9
	White	134.6	115.7	107.2	124.2	124.6	132.2
	Other	52.0	39.7	53.7	82.0	75.4	84.5
Placed June deadline applicants per 10,000 population	Asian	11.6	8.8	10.0	12.6	12.2	15.1
	Black	7.8	11.5	8.9	8.2	8.0	9.2
	Mixed	13.1	12.2	15.3	15.6	11.1	18.7
	White	22.1	22.4	18.0	21.4	24.9	27.2
	Other	6.8	4.4	5.4	7.3	7.0	7.8
All placed applicants per 10,000 population	Asian	12.7	12.7	16.5	16.0	16.4	20.3
	Black	10.7	14.8	14.8	12.3	13.1	16.2
	Mixed	15.0	15.2	20.9	20.4	14.0	22.1
	White	23.8	25.5	21.9	23.8	27.5	29.8
	Other	7.9	4.4	6.4	11.4	11.1	10.7

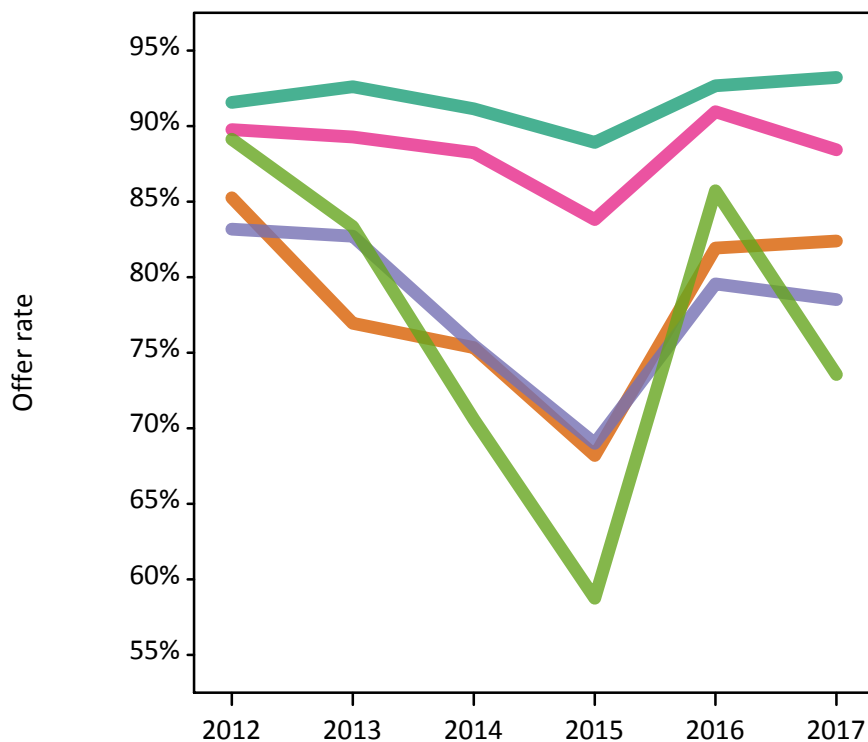
P.12 18 year old applications by ethnic group

Statistic	Ethnic group	2012	2013	2014	2015	2016	2017
June deadline applications	Asian	680	630	665	960	810	1,010
	Black	210	235	260	300	270	320
	Mixed	295	260	240	320	310	390
	White	9,005	7,545	6,830	8,015	7,800	8,090
	Other	45	35	50	80	75	85
Offers	Asian	580	485	500	655	660	835
	Black	175	195	195	205	215	250
	Mixed	265	235	210	270	280	345
	White	8,245	6,985	6,225	7,130	7,225	7,540
	Other	40	30	35	45	65	65
Offer rate	Asian	85.3%	76.9%	75.3%	68.2%	81.9%	82.4%
	Black	83.2%	82.7%	75.5%	69.0%	79.6%	78.5%
	Mixed	89.8%	89.3%	88.2%	83.8%	90.9%	88.4%
	White	91.6%	92.6%	91.1%	88.9%	92.7%	93.2%
	Other	89.1%	83.3%	70.6%	58.8%	85.7%	73.6%
Average offer rate	Asian	86.3%	79.7%	77.2%	70.6%	84.6%	84.2%
	Black	85.8%	84.2%	77.7%	71.5%	83.5%	81.0%
	Mixed	89.8%	89.9%	88.5%	83.8%	91.3%	90.5%
	White	91.4%	92.3%	90.8%	88.5%	92.2%	92.7%
	Other	90.1%	86.2%	73.1%	64.7%	83.5%	81.4%
Percentage point difference between offer rate and average offer rate	Asian	-1.1	-2.7	-1.8	-2.4	-2.6	-1.8
	Black	-2.6	-1.5	-2.2	-2.5	-4.0	-2.5
	Mixed	-0.1	-0.6	-0.3	0.0	-0.4	-2.0
	White	0.2	0.3	0.3	0.4	0.4	0.5
	Other	N/A	N/A	-2.5	-6.0	2.2	-7.8
Contribution of group to the average offer rate	Asian	0.198	0.231	0.242	0.241	0.222	0.247
	Black	0.156	0.156	0.215	0.159	0.173	0.160
	Mixed	0.117	0.144	0.137	0.135	0.132	0.139
	White	0.895	0.886	0.877	0.857	0.866	0.845
	Other	0.105	0.102	0.197	0.114	0.174	0.102

P.13 18 year old offer rate by ethnic group

Note: The line for a group is not plotted when that group made fewer than 10 applications in any of the years from 2012-2017.

- Asian
- Black
- Mixed
- White
- Other



P.14 Percentage point difference between 18 year old offer rate and average offer rate by ethnic group

Note: The line for a group is not plotted when that group made fewer than 50 applications in any of the years from 2012-2017.

- Asian
- Black
- Mixed
- White
- Other



P.15 Applicants (all ages)

Statistic	2012	2013	2014	2015	2016	2017
June deadline applicants	12,405	11,160	10,870	13,085	12,100	12,655
Placed June deadline applicants	1,945	2,020	1,710	2,020	2,195	2,375
All placed applicants	2,110	2,340	2,120	2,305	2,485	2,675

P.16 Applications (all ages)

Statistic	2012	2013	2014	2015	2016	2017
June deadline applications	12,875	11,605	11,275	13,545	12,560	13,090
Offers	11,035	9,760	9,190	10,630	10,715	11,280
Offer rate	85.7%	84.1%	81.5%	78.5%	85.3%	86.2%

P.17 Applicants (all ages) by sex

Statistic	Sex	2012	2013	2014	2015	2016	2017
June deadline applicants	Men	6,550	5,635	5,450	6,665	6,215	6,765
	Women	5,855	5,525	5,425	6,420	5,885	5,890
Placed June deadline applicants	Men	1,010	995	875	1,030	1,095	1,205
	Women	930	1,025	830	990	1,105	1,175
All placed applicants	Men	1,090	1,170	1,105	1,175	1,270	1,355
	Women	1,020	1,170	1,015	1,130	1,215	1,320

P.18 Applications (all ages) by sex

Statistic	Sex	2012	2013	2014	2015	2016	2017
June deadline applications	Men	6,800	5,875	5,665	6,920	6,435	6,985
	Women	6,075	5,730	5,605	6,620	6,120	6,105
Offers	Men	5,785	4,910	4,595	5,540	5,420	5,935
	Women	5,250	4,850	4,590	5,090	5,290	5,350
Offer rate	Men	85.1%	83.6%	81.1%	80.0%	84.2%	85.0%
	Women	86.4%	84.7%	81.9%	76.9%	86.5%	87.6%

P.19 Applicants (all ages) by POLAR3 quintile

Statistic	POLAR3 quintile	2012	2013	2014	2015	2016	2017
June deadline applicants	Quintile 1	1,200	1,115	1,160	1,390	1,345	1,365
	Quintile 2	1,735	1,630	1,625	1,965	1,740	1,835
	Quintile 3	2,310	2,125	2,080	2,495	2,380	2,465
	Quintile 4	3,025	2,660	2,585	3,235	3,005	3,025
	Quintile 5	4,110	3,620	3,390	3,965	3,600	3,935
Placed June deadline applicants	Quintile 1	200	205	180	205	225	260
	Quintile 2	260	290	255	275	300	320
	Quintile 3	380	390	340	415	435	440
	Quintile 4	495	480	460	520	545	615
	Quintile 5	605	655	480	600	685	735
All placed applicants	Quintile 1	210	230	210	230	245	285
	Quintile 2	280	330	310	320	340	360
	Quintile 3	420	455	420	465	490	495
	Quintile 4	535	555	560	590	620	690
	Quintile 5	670	775	620	695	790	840

P.20 Applications (all ages) by POLAR3 quintile

Statistic	POLAR3 quintile	2012	2013	2014	2015	2016	2017
June deadline applications	Quintile 1	1,270	1,180	1,195	1,460	1,420	1,425
	Quintile 2	1,810	1,710	1,710	2,040	1,795	1,895
	Quintile 3	2,375	2,200	2,145	2,580	2,460	2,540
	Quintile 4	3,150	2,755	2,700	3,370	3,110	3,130
	Quintile 5	4,240	3,745	3,495	4,065	3,745	4,065
Offers	Quintile 1	985	905	885	1,080	1,090	1,145
	Quintile 2	1,480	1,405	1,350	1,505	1,485	1,590
	Quintile 3	2,010	1,795	1,720	2,020	2,070	2,135
	Quintile 4	2,755	2,355	2,235	2,675	2,695	2,710
	Quintile 5	3,790	3,290	2,975	3,325	3,350	3,680
Offer rate	Quintile 1	77.4%	76.8%	74.0%	74.1%	76.8%	80.2%
	Quintile 2	81.7%	82.2%	78.8%	73.9%	82.6%	84.0%
	Quintile 3	84.7%	81.6%	80.4%	78.2%	84.1%	84.0%
	Quintile 4	87.4%	85.4%	82.9%	79.3%	86.7%	86.6%
	Quintile 5	89.3%	87.9%	85.1%	81.7%	89.5%	90.5%

P.21 Applicants (all ages) by ethnic group

Statistic	Ethnic group	2012	2013	2014	2015	2016	2017
June deadline applicants	Asian	955	1,020	1,120	1,605	1,315	1,450
	Black	360	425	470	575	495	550
	Mixed	395	365	365	475	435	505
	White	10,540	9,175	8,760	10,175	9,630	9,875
	Other	80	90	95	145	130	170
Placed June deadline applicants	Asian	115	85	100	125	150	165
	Black	35	55	45	40	45	55
	Mixed	50	50	65	65	60	80
	White	1,720	1,815	1,490	1,765	1,915	2,035
	Other	10	10	10	10	10	15
All placed applicants	Asian	130	130	165	160	200	220
	Black	45	70	70	60	65	80
	Mixed	60	60	85	85	75	95
	White	1,850	2,055	1,790	1,965	2,110	2,225
	Other	10	10	10	15	20	20

P.22 Applications (all ages) by ethnic group

Statistic	Ethnic group	2012	2013	2014	2015	2016	2017
June deadline applications	Asian	975	1,040	1,145	1,635	1,345	1,480
	Black	365	430	475	585	505	550
	Mixed	405	370	380	480	445	510
	White	10,970	9,590	9,115	10,585	10,030	10,260
	Other	80	90	95	145	135	175
Offers	Asian	770	685	735	955	1,005	1,130
	Black	250	295	290	335	325	390
	Mixed	330	300	300	350	375	425
	White	9,560	8,355	7,765	8,825	8,835	9,140
	Other	65	60	60	85	105	115
Offer rate	Asian	79.1%	66.1%	63.9%	58.5%	74.8%	76.3%
	Black	68.5%	69.4%	61.4%	57.6%	64.5%	70.7%
	Mixed	81.5%	80.9%	78.9%	72.7%	84.7%	82.8%
	White	87.1%	87.1%	85.2%	83.3%	88.1%	89.1%
	Other	81.5%	65.2%	63.5%	59.7%	76.3%	65.5%

Technical Notes and Definitions

UCAS undergraduate scheme

Adjustment

Adjustment allows applicants who have met and exceeded the terms of their conditional firm offer to seek and find a place at another provider whilst keeping their place at their original firm choice provider.

Clearing

Clearing is a route for applicants that are not placed and holding no offers to find a place on courses with vacancies.

Cycle year

The UCAS application cycle which runs from September to October the following year. For example the 2017 cycle runs from September 2016 through to October 2017.

End of cycle

The point in the cycle to which the numbers in this report refer, and the point at which the cycle is closed such that no more applications or offers can be made, and no more applicants can be placed. Numbers reported at the end of cycle exclude information on a small number of applicants who cancelled during the cycle.

Extra

Applicants who are unsuccessful in obtaining an offer or decline all offers may be eligible to apply through Extra, where they can apply to one further course at a time. Extra operates from 25 February until early July. It provides applicants who are eligible the possibility of obtaining an offer before exam results are published and Clearing starts.

June 30 deadline

The deadline for main scheme applications. Applicants who apply after this date will go directly into Clearing.

Record of Prior Acceptance (RPA)

RPA is an acceptance route used when a provider informs UCAS of applicants it has accepted outside of the normal application process (e.g. individuals who have applied directly to the provider).

Reporting groups

Ethnic group

High level grouping of ethnic origin as declared by the applicant: 'White', 'Black', 'Asian', 'Mixed', 'Other', 'Unknown'. Applicants who declare themselves as 'Unknown' ethnic origin are not reported in these tables, but are included in the associated csv data file.

POLAR3 quintile

Developed by HEFCE, POLAR3 classifies small areas across the UK into five groups according to their level of young participation in Higher Education. Each of these groups represents around 20 per cent of young people and is ranked from Quintile 1 (areas with the lowest young participation rates, considered as the most disadvantaged) to Quintile 5 (highest young participation rates, considered most advantaged). POLAR3 is based on the participation rates of young people between 2005 and 2009 who entered Higher Education between 2005-06 and 2010-11, therefore is most suitable for applicants aged 19 and under. These groups are assigned using the postcode declared by the applicant at the time of their application. If a UK postcode is invalid, considered unsafe for measurement or there is no link to Census geography possible then the applicant is not assigned to a quintile. Applicants with no POLAR3 quintile are not reported.

Sex

Sex as declared by the applicant.

SIMD 2016 quintile

Scottish index of multiple deprivation (SIMD) identifies small area concentrations of multiple deprivation across all of Scotland, providing a relative measure of deprivation amongst 6505 small areas (data zones) based on 7 socio-economic domains. These small areas are classified into five groups ranked from Quintile 1 (considered the most deprived) to Quintile 5 (considered least deprived), with equal populations in each quintile. Quintiles are assigned using the postcode declared by the applicant, applicants declaring invalid postcodes are classified as 'Not assigned' and are not reported.

SIMD is only defined for applicants domiciled in Scotland, therefore any applicants domiciled outside of Scotland cannot be assigned to an SIMD quintile and so are not reported for this measure.

SIMD is only reported for providers in Scotland. Application and entry rates by SIMD are reported in the 2017 End of Cycle Report and the 2017 cycle January deadline application rate report.

Statistics reported in the tables

All placed applicants

The number of applicants placed for entry into higher education at the provider through one of their choices, including any choices made through Extra, or via Adjustment, Clearing or RPA.

All placed applicants per 10,000 population

The number of total UK domiciled 18 year old placed applicants for entry into higher education at the provider divided by the number of UK 18 year olds in the population, multiplied by 10,000. This gives the number of 18 year olds, for every 10,000 in the population, that were placed at the provider through one of their choices, including any choices made through Extra, or via Adjustment, Clearing or RPA. It is an alternative way of expressing the entry rate to a provider. By referencing the underlying population this statistic shows how the number of placed applicants is changing in relation to the available pool of potential applicants and so gives the chance that somebody from the group will be placed at a provider.

This statistic is only reported for 18 year olds.

Average offer rate

The offer rate that you might expect if the predicted grades and subject choice of applicants were the only factors that influenced whether an applicant was made an offer by the provider. The average offer rate is calculated by dividing applicants according to their specific combination of grades (for A levels the best three predicted grades are used, for BTECs, International Baccalaureate and Scottish Highers and Advanced Highers, predicted grades along with any grades already achieved upon applying are used) and subject choice. For each combination the number of main scheme offers is divided by the number of main scheme applications, to give an overall offer rate. This is then multiplied by the number of applications made by the group for which the average offer rate is being calculated (for example POLAR3 quintile 1), to give an average number of offers for that group. These average number of offers are then added together across all combinations of predicted grade and subject and divided by the number of main scheme applications from the group to give the average offer rate.

The average offer rate does not attempt to control for any other factors that may play a part in the decision to make an offer, such as the subject of the qualifications studied, their relevance to a course, or the grade in each subject; higher numbers of A levels being studied; the exact profile of grades predicted; personal statements; teacher references; interviews; or any other criteria (such as work experience or portfolios) that may be part of the admissions decision.

This statistic is only reported for 18 year olds.

Contribution of group to the average offer rate

The way in which the average offer rate is defined means that the pattern of application and offers of a group (for example POLAR3 quintile 1) will always contribute, in part, to the average offer rate for that group. When this contribution is large, the average offer rate will mainly reflect the patterns for the group, meaning that the value of the average offer rate will be similar to the offer rate, the percentage point difference statistic will be small, and any real difference between the offer rate and what might be expected given the predicted grades and subject choices of the applicants will be difficult to detect.

Values of the contribution of group to the average offer rate range between 0 and 1. The closer the value is to 1 the greater the contribution a group makes to its own average offer rate.

This statistic is only reported for 18 year olds.

Placed June deadline applicants

An applicant who has been placed for entry into higher education at the provider through a June deadline application.

Placed June deadline applicants per 10,000 population

The number of UK domiciled 18 year old placed June deadline applicants at the provider divided by the number of UK 18 year olds in the population, multiplied by 10,000. This gives the number of 18 year olds, for every 10,000 in the population, that were placed at the provider through one of their June deadline applications. It is an alternative way of expressing the entry rate to a provider, but for placed June deadline applicants only. By referencing the underlying population this statistic shows how the number of placed June deadline applicants is changing in relation to the available pool of potential 18 year old applicants and so gives the chance that somebody from the group will be placed at a provider through a June deadline application.

This statistic is only reported for 18 year olds.

June deadline applications

An application (or choice) to a course in higher education to the provider that is made by the June 30 deadline. Each applicant can make up to five choices this way. The number of June deadline applications does not include choices made through the following routes: Clearing, Extra, Adjustment and RPAs. Applications made to October deadline courses received after the October deadline are not included in these statistics.

June deadline applicants

The number of applicants that made at least one application to the provider by the June 30 deadline.

June deadline applicants per 10,000 population

The number of UK domiciled 18 year old June deadline applicants to the provider divided by the number of UK 18 year olds in the population, multiplied by 10,000. This gives the number of 18 year olds, for every 10,000 in the population, who applied by the June 30 deadline. It is equivalent to the application rate. By referencing the underlying population this statistic shows how the number of June deadline applicants is changing in relation to the available pool of potential 18 year old applicants and so gives the chance that somebody from the group will apply to a provider by the June 30 deadline.

This statistic is only reported for 18 year olds.

Offers

An offer is defined as a provider's decision in response to an application to offer a place to an applicant, often subject to the applicant satisfying academic and/or other criteria, via a June deadline application (i.e. does not cover choices made through the following routes: Clearing, Extra, Adjustment and RPAs).

Offer rate

The number of offers made divided by the number of June deadline applications. This gives the proportion of all June deadline applications to the provider that received an offer.

Percentage point difference between offer rate and average offer rate

The offer rate minus the average offer rate.

The percentage point difference can be compared to the expected range of statistical variation resulting from the calculation of the average offer rate using the Average Offer Rate Lookup Table. Where the value of the percentage point difference lies outside of this range, the percentage point difference may be considered to represent a real difference between the offer rate and the average offer rate.

Other definitions

Age

This analysis uses country-specific age definitions that align with the cut off points for school and college cohorts within the different administrations of the UK. For England and Wales, ages are defined on the 31 August, for Northern Ireland on the 1 July and for Scotland on the 28 February the following year. Defining ages in this way matches the assignment of children to school cohorts. For applicants outside of the UK a cohort cut off of 31 August has been used. Numbers for applicants aged 17 and under are included in the tables that report numbers for all age groups. Providers in Scotland typically receive a higher proportion of applicants aged 17 and under compared to providers elsewhere in the UK.

Provider

A higher education provider - a university or college.

UK domiciled

Declared area of permanent residence within England, Northern Ireland, Scotland and Wales. Applicants from the Channel Islands and Isle of Man are not included.