

A30 Abertay University

Cycle years: 2012 - 2017

Cycle Reference Point: End of Cycle

Applicant coverage: UK domiciled

Reporting groups: Sex, POLAR3, SIMD 2016, ethnic group

Applicant statistics: June deadline applicants, placed June deadline applicants, all placed applicants, June deadline applicants per 10,000 population, placed June deadline applicants per 10,000 population, all placed applicants per 10,000 population

Application statistics: June deadline applications, offers, offer rate, average offer rate, percentage point difference between offer rate and average offer rate, contribution of group to the average offer rate

Non-disclosure controls: To avoid the disclosure of information about any individual the following measures are taken

- Applicants, placed applicants, applications and offers are rounded to the nearest 5.
- Applicants/placed applicants per 10,000 population figures are reported as 0 if the applicant/placed applicant figures are rounded to 0.
- All statistics related to the offer rate are not reported when the number of applications for a group is less than 10. The percentage point difference between the offer rate and the average offer rate is not reported when the number of applications for a group is less than 50.
- Offer rates are reported as 0% if there are fewer than 5 offers, and 100% if the number of offers is within 5 of the number of applications. When the offer rate is reported as 0% or 100%, it is reported in italics.

Contents:

18 year old applicants:	P.1
18 year old applications:	P.2
18 year old applicants by sex:	P.3
18 year old applications by sex:	P.4
18 year old applicants by POLAR3 quintile:	P.7
18 year old applications by POLAR3 quintile:	P.8
18 year old, Scotland domiciled applicants by SIMD 2016 quintile:	P.11
18 year old, Scotland domiciled applications by SIMD 2016 quintile:	P.12
18 year old applicants by ethnic group:	P.15
18 year old applications by ethnic group:	P.16
Applicants (all ages):	P.19
Applications (all ages):	P.20
Applicants (all ages) by sex:	P.21
Applications (all ages) by sex:	P.22
Applicants (all ages) by POLAR3 quintile:	P.23
Applications (all ages) by POLAR3 quintile:	P.24
Scotland domiciled applicants (all ages) by SIMD 2016 quintile:	P.25
Scotland domiciled applications (all ages) by SIMD 2016 quintile:	P.26
Applicants (all ages) by ethnic group:	P.27
Applications (all ages) by ethnic group:	P.28

P.1 18 year old applicants

Statistic	2012	2013	2014	2015	2016	2017
June deadline applicants	2,100	1,820	1,715	1,515	1,440	1,440
Placed June deadline applicants	350	295	260	200	235	255
All placed applicants	460	360	290	280	300	315
June deadline applicants per 10,000 population	27.1	23.9	22.7	19.8	19.2	19.4
Placed June deadline applicants per 10,000	4.5	3.9	3.5	2.6	3.1	3.4
All placed applicants per 10,000 population	5.9	4.7	3.9	3.7	4.0	4.2

P.2 18 year old applications

Statistic	2012	2013	2014	2015	2016	2017
June deadline applications	2,575	2,210	2,055	1,775	1,665	1,710
Offers	2,000	1,875	1,825	1,485	1,405	1,520
Offer rate	77.6%	84.8%	88.8%	83.7%	84.5%	88.7%

P.3 18 year old applicants by sex

Statistic	Sex	2012	2013	2014	2015	2016	2017
June deadline applicants	Men	985	930	805	750	720	745
	Women	1,115	895	910	765	720	695
Placed June deadline applicants	Men	190	155	130	100	135	150
	Women	160	140	130	100	95	105
All placed applicants	Men	240	185	145	145	165	180
	Women	220	175	145	135	135	135
June deadline applicants per 10,000 population	Men	24.8	23.8	20.8	19.1	18.7	19.6
	Women	29.6	24.1	24.8	20.5	19.7	19.2
Placed June deadline applicants per 10,000 population	Men	4.8	4.0	3.4	2.6	3.6	4.0
	Women	4.3	3.8	3.6	2.6	2.7	2.9
All placed applicants per 10,000 population	Men	6.1	4.7	3.8	3.7	4.2	4.7
	Women	5.8	4.8	4.0	3.6	3.7	3.8

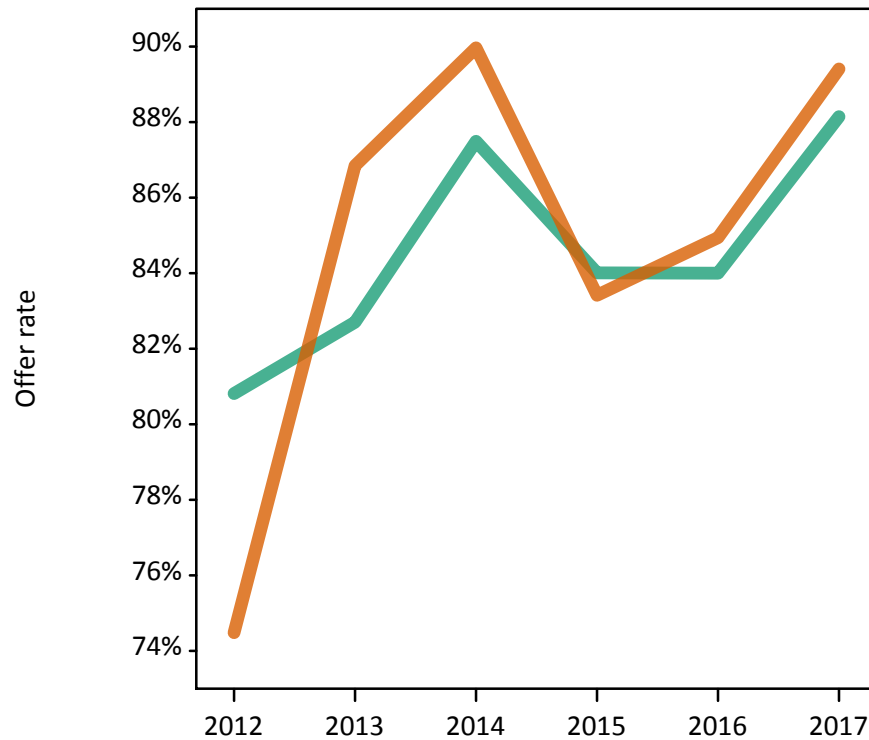
P.4 18 year old applications by sex

Statistic	Sex	2012	2013	2014	2015	2016	2017
June deadline applications	Men	1,255	1,115	1,000	920	855	920
	Women	1,320	1,095	1,055	855	810	795
Offers	Men	1,015	925	875	770	720	810
	Women	985	950	950	715	690	710
Offer rate	Men	80.8%	82.7%	87.5%	84.0%	84.0%	88.1%
	Women	74.5%	86.8%	90.0%	83.4%	84.9%	89.4%
Average offer rate	Men	81.0%	82.9%	88.5%	84.3%	84.4%	88.6%
	Women	74.3%	86.7%	89.0%	83.1%	84.5%	88.8%
Percentage point difference between offer rate and average offer rate	Men	-0.2	-0.2	-1.0	-0.3	-0.4	-0.5
	Women	0.2	0.2	0.9	0.3	0.4	0.6
Contribution of group to the average offer rate	Men	0.700	0.693	0.700	0.723	0.697	0.707
	Women	0.715	0.687	0.716	0.702	0.680	0.661

P.5 18 year old offer rate by sex

Note: The line for a group is not plotted when that group made fewer than 10 applications in any of the years from 2012-2017.

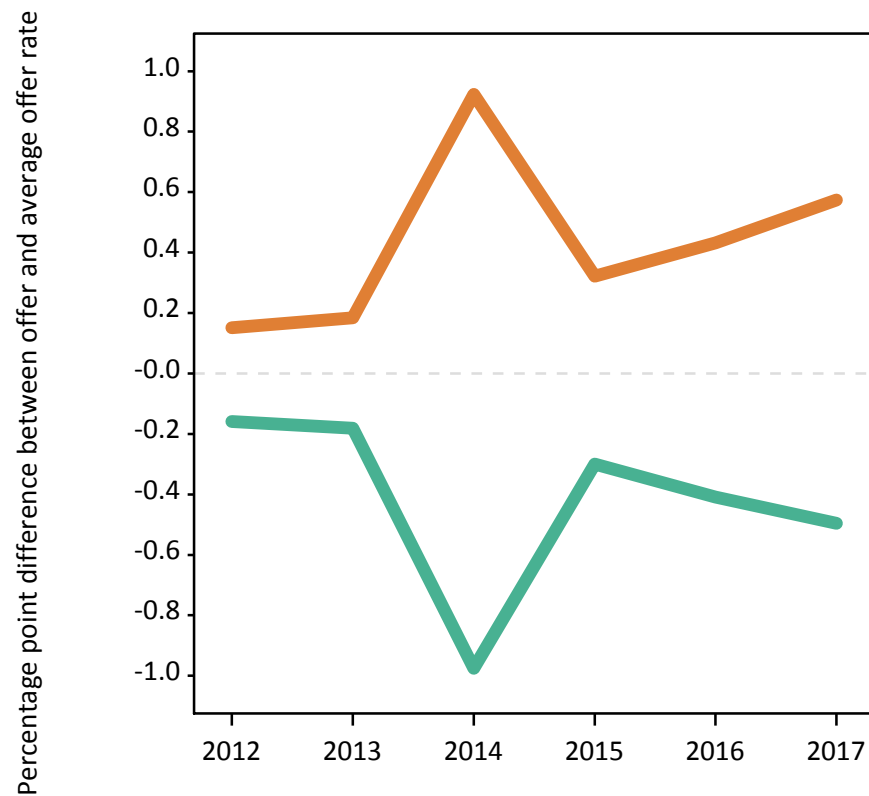
Men
Women



P.6 Percentage point difference between 18 year old offer rate and average offer rate by sex

Note: The line for a group is not plotted when that group made fewer than 50 applications in any of the years from 2012-2017.

Men
Women



P.7 18 year old applicants by POLAR3 quintile

Statistic	POLAR3 quintile	2012	2013	2014	2015	2016	2017
June deadline applicants	Quintile 1	150	125	140	125	110	120
	Quintile 2	285	240	225	245	205	215
	Quintile 3	335	300	295	250	270	230
	Quintile 4	555	510	430	365	375	365
	Quintile 5	765	640	615	525	485	505
Placed June deadline applicants	Quintile 1	20	20	10	10	15	15
	Quintile 2	45	30	30	20	35	35
	Quintile 3	55	30	40	30	40	35
	Quintile 4	95	95	75	60	60	70
	Quintile 5	140	120	100	75	90	100
All placed applicants	Quintile 1	25	30	15	15	15	15
	Quintile 2	50	35	30	30	40	40
	Quintile 3	70	45	45	40	45	40
	Quintile 4	125	115	85	90	80	90
	Quintile 5	185	140	115	100	125	125
June deadline applicants per 10,000 population	Quintile 1	10.7	9.1	10.0	8.8	8.0	8.9
	Quintile 2	19.1	16.3	15.4	16.6	14.0	15.1
	Quintile 3	21.7	19.5	19.7	16.4	17.8	15.5
	Quintile 4	34.8	32.7	28.0	23.3	24.2	24.0
	Quintile 5	45.5	38.7	37.8	31.4	29.4	30.8
Placed June deadline applicants per 10,000 population	Quintile 1	1.3	1.4	0.9	0.8	1.0	1.1
	Quintile 2	3.0	2.0	2.2	1.4	2.4	2.3
	Quintile 3	3.4	2.1	2.8	2.0	2.6	2.5
	Quintile 4	5.9	6.1	5.0	4.0	3.9	4.6
	Quintile 5	8.3	7.1	6.0	4.5	5.3	6.0
All placed applicants per 10,000 population	Quintile 1	1.8	2.0	1.0	1.2	1.0	1.2
	Quintile 2	3.3	2.5	2.2	2.1	2.6	2.9
	Quintile 3	4.6	2.8	3.1	2.5	2.9	2.8
	Quintile 4	7.8	7.3	5.5	5.8	5.1	5.8
	Quintile 5	11.1	8.3	7.0	6.0	7.6	7.7

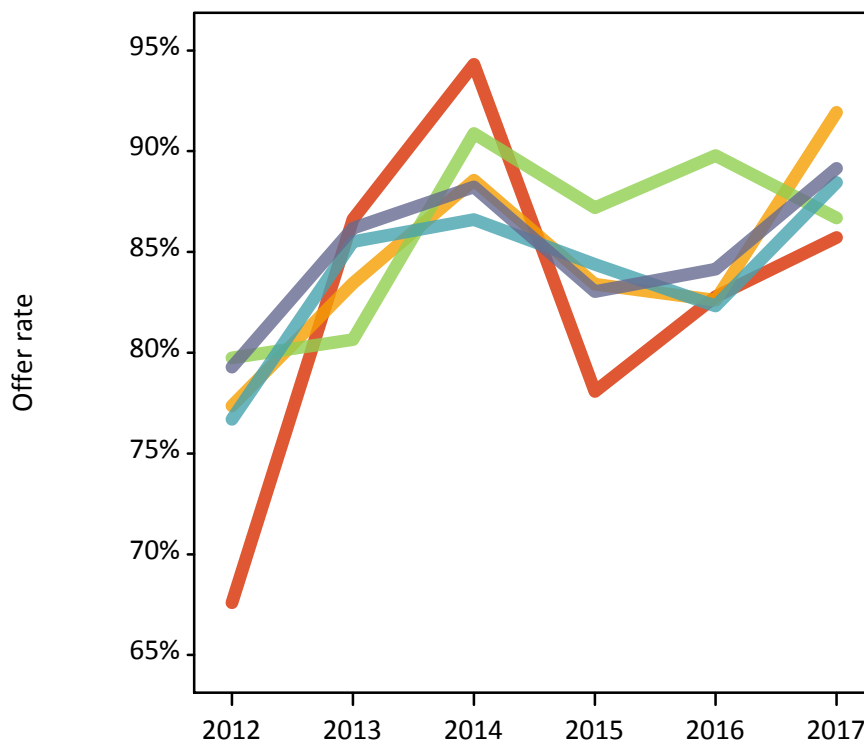
P.8 18 year old applications by POLAR3 quintile

Statistic	POLAR3 quintile	2012	2013	2014	2015	2016	2017
June deadline applications	Quintile 1	180	155	160	145	120	140
	Quintile 2	350	290	270	285	230	250
	Quintile 3	405	340	350	290	315	265
	Quintile 4	680	620	515	430	425	450
	Quintile 5	955	795	755	625	575	610
Offers	Quintile 1	120	135	150	115	100	120
	Quintile 2	270	240	240	235	190	230
	Quintile 3	325	275	320	250	280	230
	Quintile 4	520	530	445	360	350	400
	Quintile 5	760	685	665	520	485	540
Offer rate	Quintile 1	67.6%	86.6%	94.3%	78.1%	82.8%	85.7%
	Quintile 2	77.4%	83.4%	88.6%	83.4%	82.6%	91.9%
	Quintile 3	79.8%	80.6%	90.9%	87.2%	89.8%	86.7%
	Quintile 4	76.7%	85.5%	86.6%	84.4%	82.3%	88.4%
	Quintile 5	79.3%	86.2%	88.2%	83.0%	84.1%	89.1%
Average offer rate	Quintile 1	73.2%	86.6%	91.2%	79.7%	79.6%	84.3%
	Quintile 2	78.1%	82.8%	89.5%	82.5%	82.9%	89.1%
	Quintile 3	78.3%	83.4%	88.7%	86.3%	87.3%	87.9%
	Quintile 4	75.9%	84.7%	87.2%	84.1%	85.1%	89.5%
	Quintile 5	79.1%	85.9%	89.1%	83.6%	84.0%	89.3%
Percentage point difference between offer rate and average offer rate	Quintile 1	-5.6	-0.0	3.1	-1.6	3.2	1.4
	Quintile 2	-0.8	0.7	-1.0	0.9	-0.3	2.8
	Quintile 3	1.4	-2.7	2.2	0.9	2.5	-1.2
	Quintile 4	0.8	0.8	-0.6	0.2	-2.8	-1.1
	Quintile 5	0.2	0.3	-0.9	-0.6	0.1	-0.2
Contribution of group to the average offer rate	Quintile 1	0.228	0.181	0.180	0.207	0.199	0.224
	Quintile 2	0.210	0.226	0.216	0.267	0.226	0.225
	Quintile 3	0.240	0.236	0.254	0.246	0.285	0.228
	Quintile 4	0.326	0.345	0.322	0.328	0.320	0.338
	Quintile 5	0.436	0.432	0.424	0.430	0.410	0.418

P.9 18 year old offer rate by POLAR3 quintile

Note: The line for a group is not plotted when that group made fewer than 10 applications in any of the years from 2012-2017.

- Quintile 1
- Quintile 2
- Quintile 3
- Quintile 4
- Quintile 5



P.10 Percentage point difference between 18 year old offer rate and average offer rate by POLAR3 quintile

Note: The line for a group is not plotted when that group made fewer than 50 applications in any of the years from 2012-2017.

- Quintile 1
- Quintile 2
- Quintile 3
- Quintile 4
- Quintile 5



P.11 18 year old, Scotland domiciled applicants by SIMD 2016 quintile

Statistic	SIMD quintile	2012	2013	2014	2015	2016	2017
June deadline applicants	Quintile 1	150	140	160	155	120	150
	Quintile 2	225	195	205	185	175	145
	Quintile 3	365	340	275	255	250	280
	Quintile 4	460	370	380	320	335	285
	Quintile 5	495	410	415	345	340	350
Placed June deadline applicants	Quintile 1	30	30	20	15	15	20
	Quintile 2	30	40	30	25	30	20
	Quintile 3	60	55	45	40	35	60
	Quintile 4	100	65	70	55	70	50
	Quintile 5	90	85	80	55	75	75
All placed applicants	Quintile 1	40	35	20	25	20	25
	Quintile 2	40	45	30	35	35	30
	Quintile 3	80	70	50	60	45	70
	Quintile 4	125	80	75	75	85	70
	Quintile 5	115	105	90	75	105	95
June deadline applicants per 10,000 population	Quintile 1	117.8	110.5	127.5	124.2	97.7	131.2
	Quintile 2	190.8	166.5	174.3	162.1	159.0	134.4
	Quintile 3	304.3	288.5	234.2	216.3	221.1	256.0
	Quintile 4	369.8	297.7	307.9	264.6	281.2	243.6
	Quintile 5	381.7	318.6	321.9	271.8	273.6	280.4
Placed June deadline applicants per 10,000 population	Quintile 1	24.4	24.3	15.0	12.2	13.2	19.0
	Quintile 2	23.6	32.3	23.8	23.7	28.2	20.5
	Quintile 3	51.0	45.7	40.2	32.5	29.3	56.2
	Quintile 4	80.2	54.2	55.4	47.4	56.7	43.7
	Quintile 5	68.0	67.6	60.8	42.4	60.0	60.7
All placed applicants per 10,000 population	Quintile 1	31.4	25.9	16.5	20.3	14.9	21.6
	Quintile 2	35.5	38.2	25.5	31.6	31.8	27.1
	Quintile 3	67.7	58.4	43.6	49.6	40.8	66.3
	Quintile 4	101.1	66.3	61.1	61.6	70.9	58.3
	Quintile 5	87.3	82.4	70.9	60.5	83.2	76.7

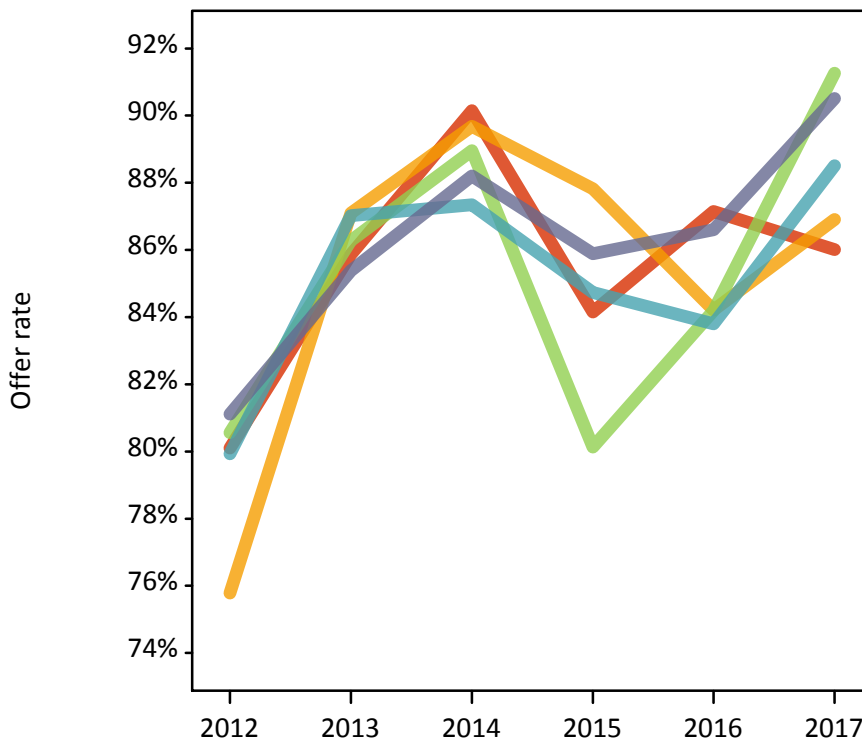
P.12 18 year old, Scotland domiciled applications by SIMD 2016 quintile

Statistic	SIMD quintile	2012	2013	2014	2015	2016	2017
June deadline applications	Quintile 1	190	185	205	185	140	195
	Quintile 2	285	250	250	230	210	170
	Quintile 3	470	410	325	295	290	330
	Quintile 4	590	470	475	380	395	350
	Quintile 5	610	515	500	410	405	430
Offers	Quintile 1	155	160	185	155	120	165
	Quintile 2	215	215	225	200	175	145
	Quintile 3	375	350	290	240	245	305
	Quintile 4	470	410	415	320	330	310
	Quintile 5	495	440	440	355	350	390
Offer rate	Quintile 1	80.1%	85.9%	90.1%	84.2%	87.1%	86.0%
	Quintile 2	75.8%	87.1%	89.7%	87.8%	84.2%	86.9%
	Quintile 3	80.6%	86.3%	89.0%	80.1%	84.2%	91.3%
	Quintile 4	79.9%	87.0%	87.3%	84.7%	83.8%	88.5%
	Quintile 5	81.1%	85.4%	88.2%	85.9%	86.6%	90.5%
Average offer rate	Quintile 1	79.5%	86.3%	88.9%	82.7%	82.7%	87.1%
	Quintile 2	78.7%	86.9%	88.7%	85.6%	84.5%	89.1%
	Quintile 3	79.0%	86.4%	88.6%	84.2%	85.8%	89.5%
	Quintile 4	80.5%	86.2%	87.4%	82.7%	84.7%	89.5%
	Quintile 5	80.6%	85.9%	89.4%	86.7%	86.0%	89.6%
Percentage point difference between offer rate and average offer rate	Quintile 1	0.6	-0.4	1.3	1.4	4.5	-1.1
	Quintile 2	-2.9	0.2	0.9	2.2	-0.2	-2.2
	Quintile 3	1.5	-0.2	0.4	-4.1	-1.6	1.7
	Quintile 4	-0.6	0.8	-0.1	2.1	-0.9	-1.0
	Quintile 5	0.5	-0.6	-1.2	-0.8	0.6	0.9
Contribution of group to the average offer rate	Quintile 1	0.124	0.132	0.143	0.172	0.145	0.199
	Quintile 2	0.166	0.161	0.178	0.185	0.186	0.132
	Quintile 3	0.243	0.251	0.213	0.233	0.229	0.267
	Quintile 4	0.313	0.286	0.309	0.275	0.302	0.286
	Quintile 5	0.325	0.322	0.316	0.315	0.317	0.319

P.13 18 year old, Scotland domiciled offer rate by SIMD 2016 quintile

Note: The line for a group is not plotted when that group made fewer than 10 applications in any of the years from 2012-2017.

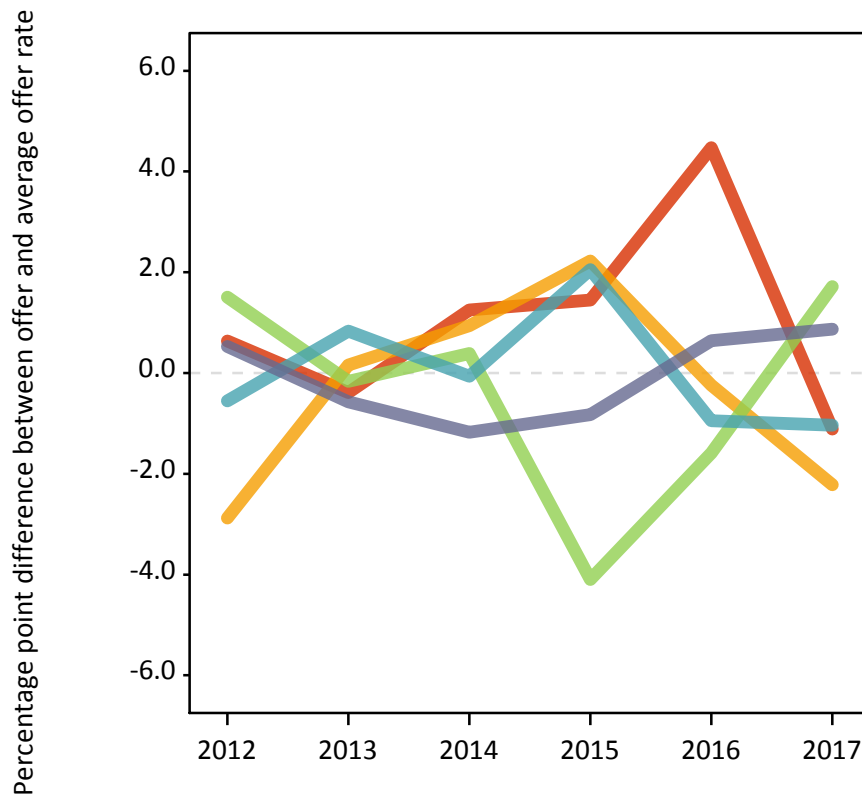
- Quintile 1
- Quintile 2
- Quintile 3
- Quintile 4
- Quintile 5



P.14 Percentage point difference between 18 year old, Scotland domiciled offer rate and average offer rate by SIMD 2016 quintile

Note: The line for a group is not plotted when that group made fewer than 50 applications in any of the years from 2012-2017.

- Quintile 1
- Quintile 2
- Quintile 3
- Quintile 4
- Quintile 5



P.15 18 year old applicants by ethnic group

Statistic	Ethnic group	2012	2013	2014	2015	2016	2017
June deadline applicants	Asian	55	45	45	35	40	45
	Black	25	15	25	20	15	25
	Mixed	25	35	30	35	30	35
	White	1,985	1,710	1,605	1,415	1,355	1,315
	Other	5	5	5	5	5	10
Placed June deadline applicants	Asian	10	10	5	5	5	5
	Black	0	0	0	5	0	5
	Mixed	0	5	5	5	5	5
	White	335	280	250	190	225	240
	Other	0	0	0	0	0	0
All placed applicants	Asian	15	10	5	10	10	5
	Black	5	5	0	5	0	5
	Mixed	0	5	5	5	5	5
	White	435	340	280	260	280	290
	Other	0	0	0	0	0	5
June deadline applicants per 10,000 population	Asian	8.8	7.1	6.6	5.1	5.3	6.4
	Black	8.2	5.7	8.2	6.3	4.2	8.6
	Mixed	10.4	12.9	9.7	11.0	9.2	11.2
	White	30.7	27.2	26.0	22.7	22.4	22.1
	Other	4.5	7.7	7.5	6.2	3.0	8.7
Placed June deadline applicants per 10,000 population	Asian	1.5	1.2	0.6	0.4	0.7	0.7
	Black	0.0	0.0	0.0	0.9	0.0	1.3
	Mixed	0.0	2.2	1.4	1.6	1.9	1.2
	White	5.2	4.4	4.1	3.0	3.7	4.0
	Other	0.0	0.0	0.0	0.0	0.0	0.0
All placed applicants per 10,000 population	Asian	2.5	1.4	0.6	1.1	1.4	1.0
	Black	1.4	1.0	0.0	1.9	0.0	1.6
	Mixed	0.0	2.6	1.4	2.3	1.9	1.2
	White	6.7	5.4	4.6	4.1	4.6	4.9
	Other	0.0	0.0	0.0	0.0	0.0	2.9

P.16 18 year old applications by ethnic group

Statistic	Ethnic group	2012	2013	2014	2015	2016	2017
June deadline applications	Asian	70	55	55	40	40	50
	Black	25	20	25	20	15	30
	Mixed	35	45	35	35	30	40
	White	2,440	2,075	1,925	1,665	1,580	1,575
	Other	5	10	10	5	5	10
Offers	Asian	50	45	45	30	30	45
	Black	15	15	25	15	10	20
	Mixed	20	35	30	30	25	30
	White	1,910	1,765	1,710	1,400	1,335	1,405
	Other	0	5	5	5	0	10
Offer rate	Asian	70.6%	82.1%	85.5%	80.0%	84.2%	86.5%
	Black	60.9%	70.0%	100.0%	72.7%	100.0%	78.6%
	Mixed	58.8%	79.1%	100.0%	83.3%	81.3%	77.5%
	White	78.3%	85.1%	88.8%	84.1%	84.5%	89.2%
	Other	N/A	N/A	N/A	N/A	N/A	N/A
Average offer rate	Asian	70.4%	82.6%	86.8%	82.6%	85.8%	85.4%
	Black	71.9%	75.9%	90.8%	73.6%	87.8%	85.8%
	Mixed	84.4%	83.1%	87.8%	85.4%	84.3%	82.9%
	White	77.7%	84.9%	88.8%	83.9%	84.4%	89.0%
	Other	N/A	N/A	N/A	N/A	N/A	N/A
Percentage point difference between offer rate and average offer rate	Asian	0.2	-0.5	-1.3	N/A	N/A	1.1
	Black	N/A	N/A	N/A	N/A	N/A	N/A
	Mixed	N/A	N/A	N/A	N/A	N/A	N/A
	White	0.5	0.1	0.0	0.2	0.1	0.2
	Other	N/A	N/A	N/A	N/A	N/A	N/A
Contribution of group to the average offer rate	Asian	0.144	0.132	0.155	0.154	0.146	0.190
	Black	0.205	0.258	0.270	0.304	0.158	0.261
	Mixed	0.139	0.171	0.169	0.105	0.102	0.172
	White	0.955	0.951	0.948	0.949	0.954	0.938
	Other	N/A	N/A	N/A	N/A	N/A	N/A

P.17 18 year old offer rate by ethnic group

Note: The line for a group is not plotted when that group made fewer than 10 applications in any of the years from 2012-2017.

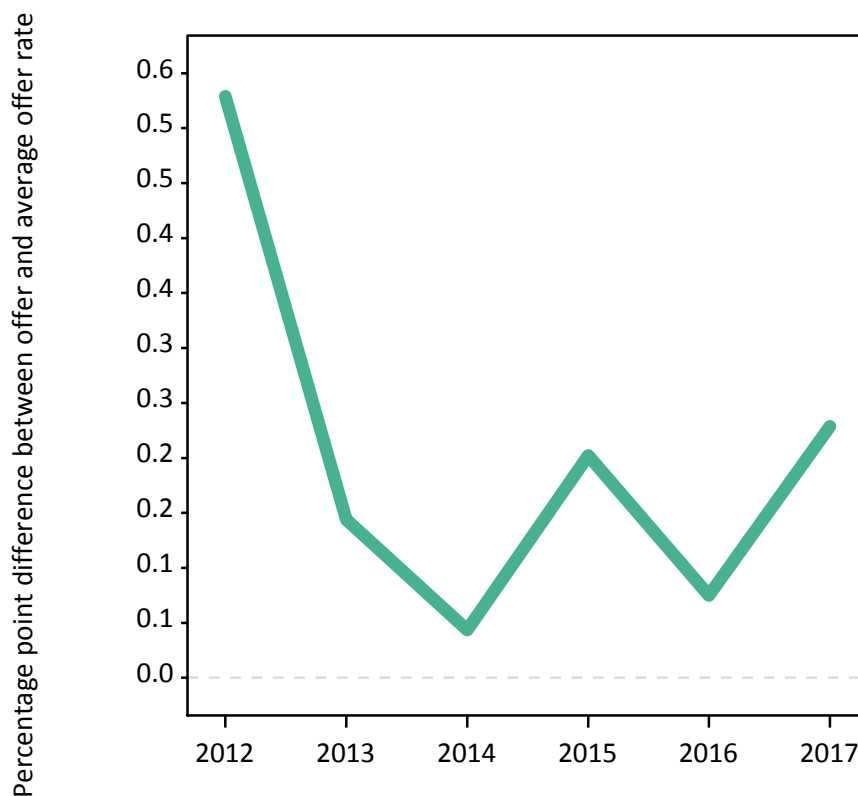
- Asian
- Black
- Mixed
- White
- Other



P.18 Percentage point difference between 18 year old offer rate and average offer rate by ethnic group

Note: The line for a group is not plotted when that group made fewer than 50 applications in any of the years from 2012-2017.

- Asian
- Black
- Mixed
- White
- Other



P.19 Applicants (all ages)

Statistic	2012	2013	2014	2015	2016	2017
June deadline applicants	4,475	3,915	3,770	3,380	3,330	3,370
Placed June deadline applicants	935	880	850	795	765	925
All placed applicants	1,145	1,015	920	985	930	1,135

P.20 Applications (all ages)

Statistic	2012	2013	2014	2015	2016	2017
June deadline applications	5,695	4,875	4,735	4,190	4,020	4,255
Offers	3,780	3,605	3,680	3,215	3,125	3,550
Offer rate	66.4%	73.9%	77.7%	76.7%	77.7%	83.4%

P.21 Applicants (all ages) by sex

Statistic	Sex	2012	2013	2014	2015	2016	2017
June deadline applicants	Men	2,200	2,130	2,005	1,765	1,760	1,810
	Women	2,270	1,785	1,770	1,620	1,570	1,560
Placed June deadline applicants	Men	510	515	470	450	430	530
	Women	425	365	380	345	330	400
All placed applicants	Men	615	580	505	550	510	620
	Women	535	435	415	435	420	515

P.22 Applications (all ages) by sex

Statistic	Sex	2012	2013	2014	2015	2016	2017
June deadline applications	Men	2,915	2,670	2,570	2,265	2,170	2,355
	Women	2,780	2,205	2,165	1,925	1,850	1,900
Offers	Men	1,985	1,940	1,915	1,705	1,680	1,925
	Women	1,795	1,665	1,765	1,505	1,445	1,625
Offer rate	Men	68.1%	72.6%	74.6%	75.3%	77.4%	81.7%
	Women	64.6%	75.4%	81.4%	78.3%	78.1%	85.5%

P.23 Applicants (all ages) by POLAR3 quintile

Statistic	POLAR3 quintile	2012	2013	2014	2015	2016	2017
June deadline applicants	Quintile 1	370	345	325	320	285	315
	Quintile 2	630	555	535	530	505	485
	Quintile 3	695	625	620	550	590	540
	Quintile 4	1,235	1,055	960	835	855	885
	Quintile 5	1,530	1,325	1,325	1,140	1,090	1,140
Placed June deadline applicants	Quintile 1	80	65	60	70	65	90
	Quintile 2	130	125	130	120	120	130
	Quintile 3	135	115	125	120	105	135
	Quintile 4	265	265	240	225	205	260
	Quintile 5	325	310	295	255	265	310
All placed applicants	Quintile 1	95	85	60	85	75	100
	Quintile 2	145	140	135	140	130	160
	Quintile 3	165	135	140	145	125	155
	Quintile 4	325	295	260	285	250	320
	Quintile 5	415	355	330	325	350	395

P.24 Applications (all ages) by POLAR3 quintile

Statistic	POLAR3 quintile	2012	2013	2014	2015	2016	2017
June deadline applications	Quintile 1	470	440	400	410	335	395
	Quintile 2	810	690	665	655	600	605
	Quintile 3	880	755	775	680	705	660
	Quintile 4	1,530	1,335	1,190	1,030	1,035	1,140
	Quintile 5	1,995	1,645	1,705	1,410	1,345	1,445
Offers	Quintile 1	290	315	305	305	260	315
	Quintile 2	525	515	505	495	465	505
	Quintile 3	590	530	590	530	560	555
	Quintile 4	1,015	985	940	815	785	955
	Quintile 5	1,355	1,255	1,335	1,060	1,050	1,215
Offer rate	Quintile 1	61.5%	72.1%	76.3%	74.3%	77.7%	79.5%
	Quintile 2	64.9%	74.8%	76.2%	75.6%	77.5%	83.7%
	Quintile 3	67.2%	69.7%	76.3%	78.4%	79.7%	84.0%
	Quintile 4	66.2%	73.9%	78.8%	79.2%	76.0%	83.5%
	Quintile 5	67.9%	76.1%	78.5%	75.2%	78.3%	84.2%

P.25 Scotland domiciled applicants (all ages) by SIMD 2016 quintile

Statistic	SIMD quintile	2012	2013	2014	2015	2016	2017
June deadline applicants	Quintile 1	505	495	465	445	440	485
	Quintile 2	640	535	525	535	485	445
	Quintile 3	750	680	650	555	585	620
	Quintile 4	920	770	765	680	690	665
	Quintile 5	925	790	825	690	705	750
Placed June deadline applicants	Quintile 1	125	130	115	105	120	165
	Quintile 2	140	140	130	170	125	125
	Quintile 3	155	165	155	155	145	175
	Quintile 4	230	185	190	185	160	190
	Quintile 5	200	190	190	155	180	220
All placed applicants	Quintile 1	150	145	125	135	130	195
	Quintile 2	170	155	135	195	140	150
	Quintile 3	195	190	165	190	175	215
	Quintile 4	270	215	210	220	205	245
	Quintile 5	255	225	205	205	240	265

P.26 Scotland domiciled applications (all ages) by SIMD 2016 quintile

Statistic	SIMD quintile	2012	2013	2014	2015	2016	2017
June deadline applications	Quintile 1	675	660	590	580	550	655
	Quintile 2	850	680	690	690	600	565
	Quintile 3	980	840	840	685	730	765
	Quintile 4	1,210	995	985	870	835	865
	Quintile 5	1,175	1,000	1,050	860	865	960
Offers	Quintile 1	425	470	440	430	420	525
	Quintile 2	515	495	510	550	460	465
	Quintile 3	665	625	625	520	570	655
	Quintile 4	860	750	785	685	645	735
	Quintile 5	845	770	840	665	710	815
Offer rate	Quintile 1	63.2%	70.7%	74.5%	73.8%	77.0%	80.6%
	Quintile 2	60.9%	73.0%	74.0%	80.0%	76.4%	81.9%
	Quintile 3	67.9%	74.6%	74.3%	75.4%	77.7%	85.4%
	Quintile 4	70.9%	75.6%	79.5%	78.7%	76.8%	85.0%
	Quintile 5	71.7%	77.1%	79.9%	77.3%	82.2%	85.1%

P.27 Applicants (all ages) by ethnic group

Statistic	Ethnic group	2012	2013	2014	2015	2016	2017
June deadline applicants	Asian	135	130	115	105	125	125
	Black	85	80	90	60	60	60
	Mixed	75	70	65	70	60	70
	White	4,155	3,595	3,475	3,115	3,060	3,070
	Other	10	15	10	15	10	25
Placed June deadline applicants	Asian	20	30	20	15	25	25
	Black	5	10	15	5	5	5
	Mixed	10	15	15	15	10	15
	White	890	820	795	750	715	865
	Other	0	0	0	0	5	5
All placed applicants	Asian	35	35	20	30	35	30
	Black	15	15	15	10	10	10
	Mixed	15	20	15	20	10	15
	White	1,055	940	860	910	860	1,010
	Other	5	0	0	5	5	15

P.28 Applications (all ages) by ethnic group

Statistic	Ethnic group	2012	2013	2014	2015	2016	2017
June deadline applications	Asian	165	175	135	125	145	145
	Black	95	85	100	65	60	65
	Mixed	90	90	75	90	70	85
	White	5,315	4,480	4,395	3,875	3,715	3,905
	Other	15	20	15	15	15	25
Offers	Asian	100	115	105	90	100	120
	Black	35	45	60	35	40	35
	Mixed	60	60	55	65	55	65
	White	3,570	3,350	3,435	2,995	2,905	3,280
	Other	10	10	10	5	15	20
Offer rate	Asian	59.4%	65.7%	77.2%	73.4%	70.6%	84.0%
	Black	37.6%	54.1%	62.0%	56.9%	62.3%	58.7%
	Mixed	65.6%	70.5%	74.0%	75.3%	79.7%	77.9%
	White	67.2%	74.8%	78.2%	77.3%	78.2%	84.0%
	Other	62.5%	66.7%	100.0%	41.2%	100.0%	76.9%

Technical Notes and Definitions

UCAS undergraduate scheme

Adjustment

Adjustment allows applicants who have met and exceeded the terms of their conditional firm offer to seek and find a place at another provider whilst keeping their place at their original firm choice provider.

Clearing

Clearing is a route for applicants that are not placed and holding no offers to find a place on courses with vacancies.

Cycle year

The UCAS application cycle which runs from September to October the following year. For example the 2017 cycle runs from September 2016 through to October 2017.

End of cycle

The point in the cycle to which the numbers in this report refer, and the point at which the cycle is closed such that no more applications or offers can be made, and no more applicants can be placed. Numbers reported at the end of cycle exclude information on a small number of applicants who cancelled during the cycle.

Extra

Applicants who are unsuccessful in obtaining an offer or decline all offers may be eligible to apply through Extra, where they can apply to one further course at a time. Extra operates from 25 February until early July. It provides applicants who are eligible the possibility of obtaining an offer before exam results are published and Clearing starts.

June 30 deadline

The deadline for main scheme applications. Applicants who apply after this date will go directly into Clearing.

Record of Prior Acceptance (RPA)

RPA is an acceptance route used when a provider informs UCAS of applicants it has accepted outside of the normal application process (e.g. individuals who have applied directly to the provider).

Reporting groups

Ethnic group

High level grouping of ethnic origin as declared by the applicant: 'White', 'Black', 'Asian', 'Mixed', 'Other', 'Unknown'. Applicants who declare themselves as 'Unknown' ethnic origin are not reported in these tables, but are included in the associated csv data file.

POLAR3 quintile

Developed by HEFCE, POLAR3 classifies small areas across the UK into five groups according to their level of young participation in Higher Education. Each of these groups represents around 20 per cent of young people and is ranked from Quintile 1 (areas with the lowest young participation rates, considered as the most disadvantaged) to Quintile 5 (highest young participation rates, considered most advantaged). POLAR3 is based on the participation rates of young people between 2005 and 2009 who entered Higher Education between 2005-06 and 2010-11, therefore is most suitable for applicants aged 19 and under. These groups are assigned using the postcode declared by the applicant at the time of their application. If a UK postcode is invalid, considered unsafe for measurement or there is no link to Census geography possible then the applicant is not assigned to a quintile. Applicants with no POLAR3 quintile are not reported.

Sex

Sex as declared by the applicant.

SIMD 2016 quintile

Scottish index of multiple deprivation (SIMD) identifies small area concentrations of multiple deprivation across all of Scotland, providing a relative measure of deprivation amongst 6505 small areas (data zones) based on 7 socio-economic domains. These small areas are classified into five groups ranked from Quintile 1 (considered the most deprived) to Quintile 5 (considered least deprived), with equal populations in each quintile. Quintiles are assigned using the postcode declared by the applicant, applicants declaring invalid postcodes are classified as 'Not assigned' and are not reported.

SIMD is only defined for applicants domiciled in Scotland, therefore any applicants domiciled outside of Scotland cannot be assigned to an SIMD quintile and so are not reported for this measure.

SIMD is only reported for providers in Scotland. Application and entry rates by SIMD are reported in the 2017 End of Cycle Report and the 2017 cycle January deadline application rate report.

Statistics reported in the tables

All placed applicants

The number of applicants placed for entry into higher education at the provider through one of their choices, including any choices made through Extra, or via Adjustment, Clearing or RPA.

All placed applicants per 10,000 population

The number of total UK domiciled 18 year old placed applicants for entry into higher education at the provider divided by the number of UK 18 year olds in the population, multiplied by 10,000. This gives the number of 18 year olds, for every 10,000 in the population, that were placed at the provider through one of their choices, including any choices made through Extra, or via Adjustment, Clearing or RPA. It is an alternative way of expressing the entry rate to a provider. By referencing the underlying population this statistic shows how the number of placed applicants is changing in relation to the available pool of potential applicants and so gives the chance that somebody from the group will be placed at a provider.

This statistic is only reported for 18 year olds.

Average offer rate

The offer rate that you might expect if the predicted grades and subject choice of applicants were the only factors that influenced whether an applicant was made an offer by the provider. The average offer rate is calculated by dividing applicants according to their specific combination of grades (for A levels the best three predicted grades are used, for BTECs, International Baccalaureate and Scottish Highers and Advanced Highers, predicted grades along with any grades already achieved upon applying are used) and subject choice. For each combination the number of main scheme offers is divided by the number of main scheme applications, to give an overall offer rate. This is then multiplied by the number of applications made by the group for which the average offer rate is being calculated (for example POLAR3 quintile 1), to give an average number of offers for that group. These average number of offers are then added together across all combinations of predicted grade and subject and divided by the number of main scheme applications from the group to give the average offer rate.

The average offer rate does not attempt to control for any other factors that may play a part in the decision to make an offer, such as the subject of the qualifications studied, their relevance to a course, or the grade in each subject; higher numbers of A levels being studied; the exact profile of grades predicted; personal statements; teacher references; interviews; or any other criteria (such as work experience or portfolios) that may be part of the admissions decision.

This statistic is only reported for 18 year olds.

Contribution of group to the average offer rate

The way in which the average offer rate is defined means that the pattern of application and offers of a group (for example POLAR3 quintile 1) will always contribute, in part, to the average offer rate for that group. When this contribution is large, the average offer rate will mainly reflect the patterns for the group, meaning that the value of the average offer rate will be similar to the offer rate, the percentage point difference statistic will be small, and any real difference between the offer rate and what might be expected given the predicted grades and subject choices of the applicants will be difficult to detect.

Values of the contribution of group to the average offer rate range between 0 and 1. The closer the value is to 1 the greater the contribution a group makes to its own average offer rate.

This statistic is only reported for 18 year olds.

Placed June deadline applicants

An applicant who has been placed for entry into higher education at the provider through a June deadline application.

Placed June deadline applicants per 10,000 population

The number of UK domiciled 18 year old placed June deadline applicants at the provider divided by the number of UK 18 year olds in the population, multiplied by 10,000. This gives the number of 18 year olds, for every 10,000 in the population, that were placed at the provider through one of their June deadline applications. It is an alternative way of expressing the entry rate to a provider, but for placed June deadline applicants only. By referencing the underlying population this statistic shows how the number of placed June deadline applicants is changing in relation to the available pool of potential 18 year old applicants and so gives the chance that somebody from the group will be placed at a provider through a June deadline application.

This statistic is only reported for 18 year olds.

June deadline applications

An application (or choice) to a course in higher education to the provider that is made by the June 30 deadline. Each applicant can make up to five choices this way. The number of June deadline applications does not include choices made through the following routes: Clearing, Extra, Adjustment and RPAs. Applications made to October deadline courses received after the October deadline are not included in these statistics.

June deadline applicants

The number of applicants that made at least one application to the provider by the June 30 deadline.

June deadline applicants per 10,000 population

The number of UK domiciled 18 year old June deadline applicants to the provider divided by the number of UK 18 year olds in the population, multiplied by 10,000. This gives the number of 18 year olds, for every 10,000 in the population, who applied by the June 30 deadline. It is equivalent to the application rate. By referencing the underlying population this statistic shows how the number of June deadline applicants is changing in relation to the available pool of potential 18 year old applicants and so gives the chance that somebody from the group will apply to a provider by the June 30 deadline.

This statistic is only reported for 18 year olds.

Offers

An offer is defined as a provider's decision in response to an application to offer a place to an applicant, often subject to the applicant satisfying academic and/or other criteria, via a June deadline application (i.e. does not cover choices made through the following routes: Clearing, Extra, Adjustment and RPAs).

Offer rate

The number of offers made divided by the number of June deadline applications. This gives the proportion of all June deadline applications to the provider that received an offer.

Percentage point difference between offer rate and average offer rate

The offer rate minus the average offer rate.

The percentage point difference can be compared to the expected range of statistical variation resulting from the calculation of the average offer rate using the Average Offer Rate Lookup Table. Where the value of the percentage point difference lies outside of this range, the percentage point difference may be considered to represent a real difference between the offer rate and the average offer rate.

Other definitions

Age

This analysis uses country-specific age definitions that align with the cut off points for school and college cohorts within the different administrations of the UK. For England and Wales, ages are defined on the 31 August, for Northern Ireland on the 1 July and for Scotland on the 28 February the following year. Defining ages in this way matches the assignment of children to school cohorts. For applicants outside of the UK a cohort cut off of 31 August has been used. Numbers for applicants aged 17 and under are included in the tables that report numbers for all age groups. Providers in Scotland typically receive a higher proportion of applicants aged 17 and under compared to providers elsewhere in the UK.

Provider

A higher education provider - a university or college.

UK domiciled

Declared area of permanent residence within England, Northern Ireland, Scotland and Wales. Applicants from the Channel Islands and Isle of Man are not included.