

A20 The University of Aberdeen

Cycle years: 2012 - 2017

Cycle Reference Point: End of Cycle

Applicant coverage: UK domiciled

Reporting groups: Sex, POLAR3, SIMD 2016, ethnic group

Applicant statistics: June deadline applicants, placed June deadline applicants, all placed applicants, June deadline applicants per 10,000 population, placed June deadline applicants per 10,000 population, all placed applicants per 10,000 population

Application statistics: June deadline applications, offers, offer rate, average offer rate, percentage point difference between offer rate and average offer rate, contribution of group to the average offer rate

Non-disclosure controls: To avoid the disclosure of information about any individual the following measures are taken

- Applicants, placed applicants, applications and offers are rounded to the nearest 5.
- Applicants/placed applicants per 10,000 population figures are reported as 0 if the applicant/placed applicant figures are rounded to 0.
- All statistics related to the offer rate are not reported when the number of applications for a group is less than 10. The percentage point difference between the offer rate and the average offer rate is not reported when the number of applications for a group is less than 50.
- Offer rates are reported as 0% if there are fewer than 5 offers, and 100% if the number of offers is within 5 of the number of applications. When the offer rate is reported as 0% or 100%, it is reported in italics.

Contents:

18 year old applicants:	P.1
18 year old applications:	P.2
18 year old applicants by sex:	P.3
18 year old applications by sex:	P.4
18 year old applicants by POLAR3 quintile:	P.7
18 year old applications by POLAR3 quintile:	P.8
18 year old, Scotland domiciled applicants by SIMD 2016 quintile:	P.11
18 year old, Scotland domiciled applications by SIMD 2016 quintile:	P.12
18 year old applicants by ethnic group:	P.15
18 year old applications by ethnic group:	P.16
Applicants (all ages):	P.19
Applications (all ages):	P.20
Applicants (all ages) by sex:	P.21
Applications (all ages) by sex:	P.22
Applicants (all ages) by POLAR3 quintile:	P.23
Applications (all ages) by POLAR3 quintile:	P.24
Scotland domiciled applicants (all ages) by SIMD 2016 quintile:	P.25
Scotland domiciled applications (all ages) by SIMD 2016 quintile:	P.26
Applicants (all ages) by ethnic group:	P.27
Applications (all ages) by ethnic group:	P.28

P.1 18 year old applicants

Statistic	2012	2013	2014	2015	2016	2017
June deadline applicants	7,295	7,645	7,375	7,235	6,680	6,415
Placed June deadline applicants	1,190	700	1,050	910	955	695
All placed applicants	1,310	860	1,160	1,005	1,035	765
June deadline applicants per 10,000 population	94.3	100.5	97.9	94.4	89.1	86.6
Placed June deadline applicants per 10,000	15.4	9.2	13.9	11.9	12.8	9.4
All placed applicants per 10,000 population	16.9	11.3	15.4	13.1	13.8	10.3

P.2 18 year old applications

Statistic	2012	2013	2014	2015	2016	2017
June deadline applications	8,335	8,705	8,160	7,900	7,215	6,995
Offers	6,640	4,630	6,285	6,170	6,100	5,375
Offer rate	79.7%	53.2%	77.1%	78.1%	84.5%	76.9%

P.3 18 year old applicants by sex

Statistic	Sex	2012	2013	2014	2015	2016	2017
June deadline applicants	Men	3,305	3,575	3,265	3,315	2,845	2,630
	Women	3,985	4,070	4,110	3,920	3,835	3,780
Placed June deadline applicants	Men	510	285	460	395	405	280
	Women	680	415	590	515	550	415
All placed applicants	Men	565	365	530	445	440	305
	Women	745	495	630	565	600	455
June deadline applicants per 10,000 population	Men	83.4	91.5	84.3	84.4	74.1	69.3
	Women	105.8	109.9	112.3	104.9	104.9	104.7
Placed June deadline applicants per 10,000 population	Men	12.8	7.3	11.9	10.1	10.6	7.3
	Women	18.0	11.3	16.1	13.7	15.1	11.5
All placed applicants per 10,000 population	Men	14.3	9.3	13.7	11.3	11.4	8.1
	Women	19.7	13.4	17.2	15.1	16.4	12.6

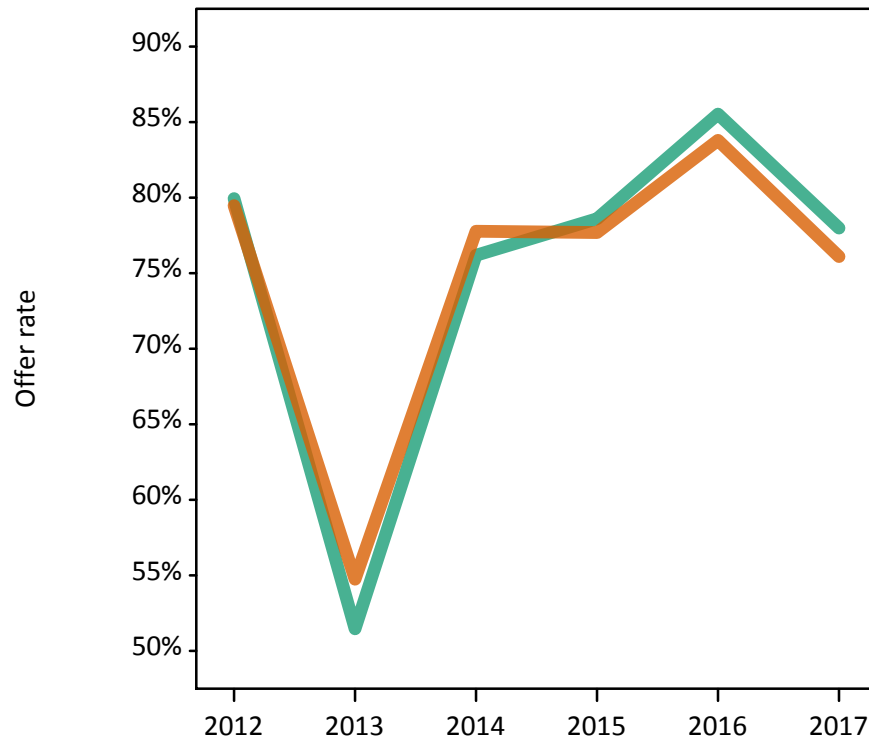
P.4 18 year old applications by sex

Statistic	Sex	2012	2013	2014	2015	2016	2017
June deadline applications	Men	3,795	4,130	3,650	3,660	3,095	2,895
	Women	4,540	4,575	4,510	4,240	4,120	4,100
Offers	Men	3,035	2,125	2,780	2,875	2,650	2,255
	Women	3,605	2,505	3,505	3,295	3,450	3,120
Offer rate	Men	79.9%	51.5%	76.2%	78.6%	85.5%	78.0%
	Women	79.5%	54.8%	77.8%	77.7%	83.8%	76.1%
Average offer rate	Men	79.8%	53.5%	76.8%	78.7%	86.2%	79.2%
	Women	79.6%	52.9%	77.3%	77.6%	83.3%	75.3%
Percentage point difference between offer rate and average offer rate	Men	0.1	-2.1	-0.6	-0.1	-0.7	-1.2
	Women	-0.1	1.9	0.5	0.0	0.5	0.8
Contribution of group to the average offer rate	Men	0.597	0.613	0.606	0.616	0.577	0.574
	Women	0.663	0.650	0.681	0.669	0.682	0.700

P.5 18 year old offer rate by sex

Note: The line for a group is not plotted when that group made fewer than 10 applications in any of the years from 2012-2017.

Men
Women



P.6 Percentage point difference between 18 year old offer rate and average offer rate by sex

Note: The line for a group is not plotted when that group made fewer than 50 applications in any of the years from 2012-2017.

Men
Women



P.7 18 year old applicants by POLAR3 quintile

Statistic	POLAR3 quintile	2012	2013	2014	2015	2016	2017
June deadline applicants	Quintile 1	275	305	315	360	330	330
	Quintile 2	605	685	615	680	650	620
	Quintile 3	1,000	1,105	1,095	1,065	960	960
	Quintile 4	1,735	1,815	1,805	1,725	1,590	1,490
	Quintile 5	3,650	3,710	3,525	3,390	3,135	2,990
Placed June deadline applicants	Quintile 1	20	15	35	35	30	30
	Quintile 2	60	55	65	60	70	60
	Quintile 3	160	85	145	125	100	90
	Quintile 4	275	170	245	220	250	145
	Quintile 5	675	370	560	465	500	370
All placed applicants	Quintile 1	25	20	40	40	35	30
	Quintile 2	70	70	70	75	80	65
	Quintile 3	180	95	160	130	115	100
	Quintile 4	305	215	265	250	265	160
	Quintile 5	725	455	615	510	540	405
June deadline applicants per 10,000 population	Quintile 1	19.4	22.0	22.8	25.6	24.4	24.8
	Quintile 2	40.4	46.4	42.2	45.8	44.8	43.8
	Quintile 3	64.8	72.5	72.8	69.4	63.8	64.5
	Quintile 4	109.3	116.2	117.3	110.3	103.1	97.4
	Quintile 5	217.3	224.3	216.3	202.4	189.9	182.2
Placed June deadline applicants per 10,000 population	Quintile 1	1.5	1.2	2.4	2.4	2.3	2.1
	Quintile 2	3.9	3.9	4.4	4.1	5.0	4.2
	Quintile 3	10.4	5.4	9.8	8.1	6.8	6.1
	Quintile 4	17.3	11.0	15.8	14.2	16.1	9.4
	Quintile 5	40.1	22.4	34.3	27.8	30.3	22.5
All placed applicants per 10,000 population	Quintile 1	1.9	1.5	2.8	2.8	2.4	2.3
	Quintile 2	4.6	4.8	4.9	5.1	5.4	4.6
	Quintile 3	11.6	6.4	10.8	8.5	7.7	6.7
	Quintile 4	19.3	13.8	17.3	15.9	17.2	10.4
	Quintile 5	43.2	27.5	37.8	30.5	32.8	24.7

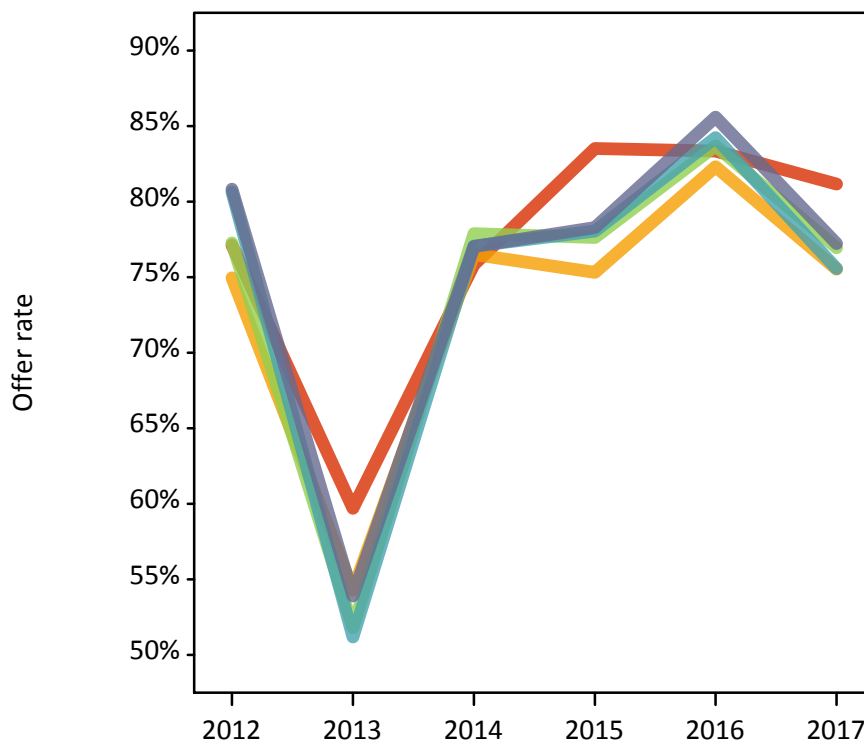
P.8 18 year old applications by POLAR3 quintile

Statistic	POLAR3 quintile	2012	2013	2014	2015	2016	2017
June deadline applications	Quintile 1	295	340	335	390	350	360
	Quintile 2	665	760	670	715	685	660
	Quintile 3	1,145	1,270	1,210	1,175	1,025	1,035
	Quintile 4	1,975	2,095	1,995	1,885	1,720	1,610
	Quintile 5	4,230	4,215	3,935	3,725	3,425	3,300
Offers	Quintile 1	230	205	255	325	290	295
	Quintile 2	500	410	510	535	565	500
	Quintile 3	885	660	945	910	855	800
	Quintile 4	1,590	1,075	1,535	1,470	1,445	1,215
	Quintile 5	3,415	2,275	3,035	2,915	2,935	2,550
Offer rate	Quintile 1	77.1%	59.7%	75.8%	83.5%	83.3%	81.2%
	Quintile 2	75.0%	54.3%	76.5%	75.3%	82.3%	75.5%
	Quintile 3	77.3%	51.8%	77.9%	77.6%	83.7%	77.0%
	Quintile 4	80.6%	51.2%	77.0%	78.0%	84.2%	75.6%
	Quintile 5	80.8%	53.9%	77.0%	78.3%	85.6%	77.2%
Average offer rate	Quintile 1	79.7%	54.7%	75.9%	81.2%	83.2%	77.5%
	Quintile 2	77.2%	54.7%	76.0%	75.8%	83.3%	75.4%
	Quintile 3	79.2%	52.4%	76.4%	78.6%	84.4%	77.1%
	Quintile 4	79.4%	53.8%	78.1%	78.7%	84.3%	76.6%
	Quintile 5	80.3%	52.8%	77.1%	77.8%	85.1%	77.1%
Percentage point difference between offer rate and average offer rate	Quintile 1	-2.6	5.0	-0.1	2.3	0.1	3.7
	Quintile 2	-2.2	-0.4	0.5	-0.5	-1.0	0.1
	Quintile 3	-2.0	-0.6	1.5	-1.0	-0.7	-0.2
	Quintile 4	1.2	-2.6	-1.0	-0.6	-0.1	-1.0
	Quintile 5	0.5	1.1	-0.0	0.5	0.4	0.1
Contribution of group to the average offer rate	Quintile 1	0.212	0.194	0.196	0.204	0.230	0.234
	Quintile 2	0.204	0.192	0.204	0.217	0.212	0.214
	Quintile 3	0.237	0.238	0.252	0.248	0.236	0.254
	Quintile 4	0.315	0.316	0.327	0.315	0.315	0.319
	Quintile 5	0.569	0.549	0.547	0.537	0.542	0.546

P.9 18 year old offer rate by POLAR3 quintile

Note: The line for a group is not plotted when that group made fewer than 10 applications in any of the years from 2012-2017.

- Quintile 1
- Quintile 2
- Quintile 3
- Quintile 4
- Quintile 5



P.10 Percentage point difference between 18 year old offer rate and average offer rate by POLAR3 quintile

Note: The line for a group is not plotted when that group made fewer than 50 applications in any of the years from 2012-2017.

- Quintile 1
- Quintile 2
- Quintile 3
- Quintile 4
- Quintile 5



P.11 18 year old, Scotland domiciled applicants by SIMD 2016 quintile

Statistic	SIMD quintile	2012	2013	2014	2015	2016	2017
June deadline applicants	Quintile 1	230	295	250	315	290	280
	Quintile 2	465	545	505	515	545	490
	Quintile 3	935	905	885	900	790	815
	Quintile 4	1,370	1,465	1,285	1,245	1,335	1,235
	Quintile 5	2,245	2,260	2,065	2,070	2,005	1,890
Placed June deadline applicants	Quintile 1	30	25	20	20	35	25
	Quintile 2	65	40	70	60	70	65
	Quintile 3	165	85	145	125	125	100
	Quintile 4	280	140	230	185	240	160
	Quintile 5	515	265	390	345	375	245
All placed applicants	Quintile 1	30	25	25	25	35	30
	Quintile 2	70	45	75	60	70	65
	Quintile 3	170	100	155	130	130	105
	Quintile 4	290	170	235	190	245	165
	Quintile 5	525	310	410	360	395	255
June deadline applicants per 10,000 population	Quintile 1	182.2	230.4	196.0	254.1	240.9	243.3
	Quintile 2	394.4	461.3	429.3	452.3	496.8	455.4
	Quintile 3	780.8	764.9	756.4	769.4	700.6	748.8
	Quintile 4	1,099.1	1,186.0	1,047.5	1,037.4	1,112.4	1,059.2
	Quintile 5	1,733.0	1,755.3	1,608.0	1,624.5	1,605.5	1,508.9
Placed June deadline applicants per 10,000 population	Quintile 1	22.0	19.6	17.3	17.0	27.3	23.3
	Quintile 2	56.6	35.7	59.5	51.7	63.6	58.8
	Quintile 3	137.1	73.6	125.6	106.0	111.9	93.9
	Quintile 4	225.4	114.9	189.0	153.9	198.6	138.9
	Quintile 5	397.9	204.4	304.8	271.8	299.2	195.7
All placed applicants per 10,000 population	Quintile 1	22.0	20.4	18.9	18.7	27.3	25.0
	Quintile 2	58.3	37.4	62.1	54.3	64.5	58.8
	Quintile 3	141.3	84.6	131.6	111.1	114.6	96.7
	Quintile 4	232.7	139.1	192.2	156.4	203.6	143.2
	Quintile 5	404.8	240.9	321.1	283.6	316.0	204.5

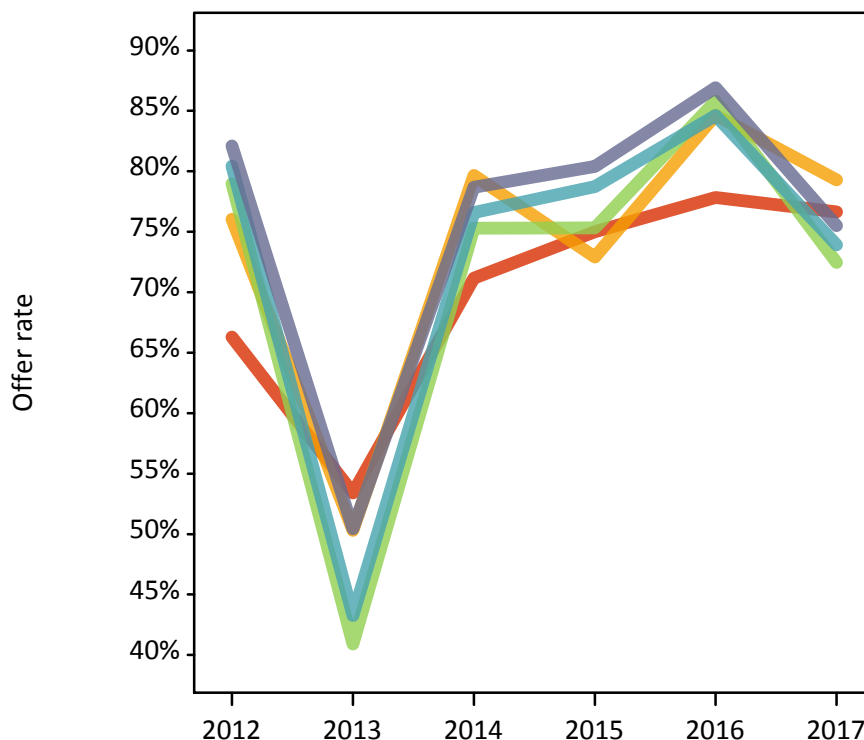
P.12 18 year old, Scotland domiciled applications by SIMD 2016 quintile

Statistic	SIMD quintile	2012	2013	2014	2015	2016	2017
June deadline applications	Quintile 1	265	335	265	335	315	305
	Quintile 2	550	635	585	585	595	535
	Quintile 3	1,115	1,090	1,010	995	880	910
	Quintile 4	1,615	1,735	1,465	1,405	1,445	1,395
	Quintile 5	2,705	2,675	2,365	2,335	2,235	2,110
Offers	Quintile 1	175	180	190	250	245	235
	Quintile 2	420	320	465	430	500	425
	Quintile 3	880	445	760	750	755	660
	Quintile 4	1,300	750	1,125	1,105	1,220	1,030
	Quintile 5	2,220	1,350	1,860	1,880	1,940	1,595
Offer rate	Quintile 1	66.3%	53.4%	71.2%	75.0%	77.8%	76.6%
	Quintile 2	76.0%	50.3%	79.7%	72.9%	84.7%	79.3%
	Quintile 3	79.0%	40.9%	75.3%	75.3%	85.8%	72.5%
	Quintile 4	80.4%	43.3%	76.6%	78.7%	84.6%	73.9%
	Quintile 5	82.1%	50.4%	78.7%	80.4%	86.9%	75.5%
Average offer rate	Quintile 1	72.8%	42.0%	71.6%	74.2%	81.8%	70.9%
	Quintile 2	78.5%	43.1%	75.3%	74.0%	84.4%	73.5%
	Quintile 3	78.8%	44.9%	77.6%	78.5%	85.5%	73.9%
	Quintile 4	79.9%	47.1%	77.4%	78.8%	85.2%	76.6%
	Quintile 5	81.4%	49.4%	78.2%	78.8%	86.2%	75.4%
Percentage point difference between offer rate and average offer rate	Quintile 1	-6.6	11.4	-0.5	0.8	-4.0	5.7
	Quintile 2	-2.4	7.3	4.4	-1.1	0.2	5.8
	Quintile 3	0.2	-4.0	-2.3	-3.2	0.3	-1.4
	Quintile 4	0.6	-3.9	-0.8	-0.1	-0.6	-2.7
	Quintile 5	0.7	1.0	0.5	1.6	0.7	0.1
Contribution of group to the average offer rate	Quintile 1	0.086	0.104	0.090	0.103	0.115	0.113
	Quintile 2	0.131	0.149	0.146	0.151	0.147	0.141
	Quintile 3	0.222	0.212	0.228	0.218	0.200	0.211
	Quintile 4	0.288	0.303	0.297	0.283	0.298	0.299
	Quintile 5	0.465	0.452	0.449	0.451	0.448	0.438

P.13 18 year old, Scotland domiciled offer rate by SIMD 2016 quintile

Note: The line for a group is not plotted when that group made fewer than 10 applications in any of the years from 2012-2017.

- Quintile 1
- Quintile 2
- Quintile 3
- Quintile 4
- Quintile 5



P.14 Percentage point difference between 18 year old, Scotland domiciled offer rate and average offer rate by SIMD 2016 quintile

Note: The line for a group is not plotted when that group made fewer than 50 applications in any of the years from 2012-2017.

- Quintile 1
- Quintile 2
- Quintile 3
- Quintile 4
- Quintile 5



P.15 18 year old applicants by ethnic group

Statistic	Ethnic group	2012	2013	2014	2015	2016	2017
June deadline applicants	Asian	285	305	355	380	345	340
	Black	75	120	135	130	105	110
	Mixed	135	195	175	190	190	160
	White	6,725	6,950	6,640	6,430	5,930	5,705
	Other	35	45	50	55	50	60
Placed June deadline applicants	Asian	25	25	30	30	35	35
	Black	5	5	15	15	15	10
	Mixed	15	15	15	30	25	10
	White	1,130	655	985	825	870	630
	Other	5	0	5	5	10	5
All placed applicants	Asian	35	35	50	40	40	45
	Black	15	10	25	20	15	20
	Mixed	20	20	20	35	30	20
	White	1,225	790	1,060	895	935	675
	Other	5	5	10	5	10	5
June deadline applicants per 10,000 population	Asian	43.9	45.9	52.3	53.7	48.2	46.2
	Black	26.6	40.8	44.2	41.2	34.2	35.3
	Mixed	52.6	71.8	60.1	61.6	61.0	50.5
	White	104.2	110.5	107.6	103.2	98.0	96.1
	Other	39.6	49.6	53.7	59.1	50.2	58.2
Placed June deadline applicants per 10,000 population	Asian	4.2	3.5	4.6	4.0	4.7	4.6
	Black	1.4	2.0	4.6	4.4	4.5	3.8
	Mixed	6.5	4.8	5.6	10.1	7.9	3.4
	White	17.5	10.4	15.9	13.2	14.4	10.6
	Other	5.7	0.0	3.2	5.2	9.0	4.9
All placed applicants per 10,000 population	Asian	5.4	5.5	7.1	5.4	5.8	5.8
	Black	5.7	3.7	7.9	6.6	5.4	6.0
	Mixed	8.1	7.4	6.3	11.7	8.9	5.6
	White	19.0	12.5	17.2	14.4	15.4	11.4
	Other	5.7	4.4	8.6	7.3	12.1	4.9

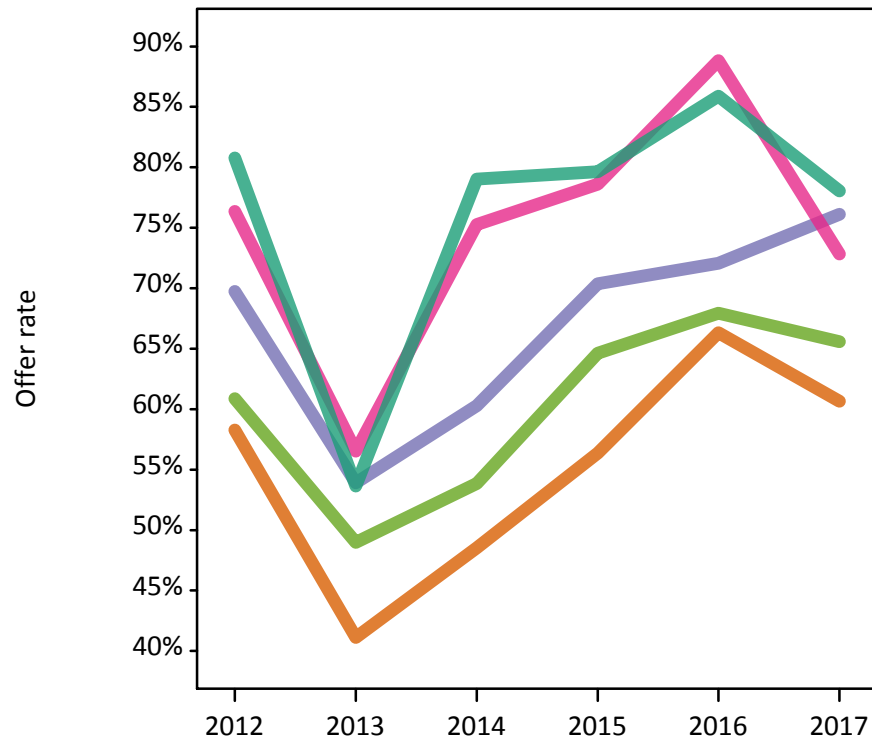
P.16 18 year old applications by ethnic group

Statistic	Ethnic group	2012	2013	2014	2015	2016	2017
June deadline applications	Asian	300	345	375	400	380	360
	Black	75	130	140	135	110	115
	Mixed	150	205	180	200	195	175
	White	7,725	7,945	7,385	7,050	6,420	6,250
	Other	45	50	50	65	55	60
Offers	Asian	175	140	180	225	250	220
	Black	55	70	85	95	80	85
	Mixed	115	115	135	160	175	125
	White	6,240	4,260	5,835	5,615	5,515	4,880
	Other	30	25	30	40	35	40
Offer rate	Asian	58.3%	41.1%	48.5%	56.4%	66.3%	60.7%
	Black	69.7%	53.9%	60.3%	70.4%	72.1%	76.1%
	Mixed	76.4%	56.5%	75.3%	78.6%	88.8%	72.8%
	White	80.8%	53.6%	79.0%	79.6%	85.9%	78.1%
	Other	60.9%	49.0%	53.8%	64.6%	67.9%	65.6%
Average offer rate	Asian	61.0%	45.0%	53.9%	60.3%	69.6%	62.9%
	Black	73.6%	58.0%	64.8%	75.7%	75.8%	78.3%
	Mixed	81.0%	55.1%	75.3%	75.7%	85.4%	74.3%
	White	80.5%	53.4%	78.7%	79.4%	85.7%	77.8%
	Other	66.8%	50.3%	53.9%	63.0%	69.1%	67.9%
Percentage point difference between offer rate and average offer rate	Asian	-2.7	-3.9	-5.3	-4.0	-3.2	-2.3
	Black	-3.9	-4.1	-4.5	-5.4	-3.7	-2.2
	Mixed	-4.6	1.4	-0.0	2.9	3.4	-1.5
	White	0.3	0.2	0.3	0.2	0.2	0.2
	Other	N/A	N/A	-0.0	1.6	-1.2	-2.3
Contribution of group to the average offer rate	Asian	0.186	0.169	0.203	0.198	0.206	0.219
	Black	0.213	0.241	0.244	0.202	0.275	0.229
	Mixed	0.172	0.166	0.170	0.172	0.152	0.182
	White	0.939	0.929	0.927	0.913	0.913	0.917
	Other	0.106	0.179	0.198	0.116	0.199	0.140

P.17 18 year old offer rate by ethnic group

Note: The line for a group is not plotted when that group made fewer than 10 applications in any of the years from 2012-2017.

- Asian
- Black
- Mixed
- White
- Other



P.18 Percentage point difference between 18 year old offer rate and average offer rate by ethnic group

Note: The line for a group is not plotted when that group made fewer than 50 applications in any of the years from 2012-2017.

- Asian
- Black
- Mixed
- White
- Other



P.19 Applicants (all ages)

Statistic	2012	2013	2014	2015	2016	2017
June deadline applicants	11,445	12,165	11,685	12,960	12,555	11,960
Placed June deadline applicants	1,985	1,140	1,745	1,835	2,020	1,600
All placed applicants	2,145	1,385	1,900	2,005	2,200	1,735

P.20 Applications (all ages)

Statistic	2012	2013	2014	2015	2016	2017
June deadline applications	13,495	14,230	13,370	14,455	13,965	13,455
Offers	9,875	6,645	9,330	9,795	9,860	8,755
Offer rate	73.1%	46.7%	69.8%	67.8%	70.6%	65.1%

P.21 Applicants (all ages) by sex

Statistic	Sex	2012	2013	2014	2015	2016	2017
June deadline applicants	Men	5,485	5,965	5,485	6,035	5,445	4,945
	Women	5,960	6,200	6,200	6,925	7,110	7,015
Placed June deadline applicants	Men	920	495	820	795	875	635
	Women	1,065	640	925	1,045	1,145	960
All placed applicants	Men	995	620	915	880	960	690
	Women	1,150	765	985	1,125	1,240	1,040

P.22 Applications (all ages) by sex

Statistic	Sex	2012	2013	2014	2015	2016	2017
June deadline applications	Men	6,445	7,020	6,350	6,835	6,125	5,620
	Women	7,050	7,210	7,020	7,625	7,840	7,835
Offers	Men	4,715	3,170	4,315	4,725	4,510	3,765
	Women	5,155	3,475	5,015	5,070	5,350	4,990
Offer rate	Men	73.2%	45.1%	67.9%	69.2%	73.7%	67.0%
	Women	73.1%	48.2%	71.4%	66.5%	68.2%	63.7%

P.23 Applicants (all ages) by POLAR3 quintile

Statistic	POLAR3 quintile	2012	2013	2014	2015	2016	2017
June deadline applicants	Quintile 1	515	585	585	695	685	645
	Quintile 2	1,020	1,155	1,090	1,275	1,255	1,170
	Quintile 3	1,660	1,800	1,815	2,030	1,820	1,805
	Quintile 4	2,720	2,875	2,740	3,005	2,925	2,800
	Quintile 5	5,480	5,705	5,425	5,915	5,830	5,495
Placed June deadline applicants	Quintile 1	50	40	65	70	80	60
	Quintile 2	115	85	120	140	155	135
	Quintile 3	270	160	280	295	240	225
	Quintile 4	435	265	375	405	475	345
	Quintile 5	1,110	585	895	915	1,060	830
All placed applicants	Quintile 1	60	50	75	80	90	65
	Quintile 2	130	110	135	160	165	150
	Quintile 3	295	180	305	315	270	245
	Quintile 4	475	325	405	450	510	375
	Quintile 5	1,180	715	975	990	1,150	895

P.24 Applications (all ages) by POLAR3 quintile

Statistic	POLAR3 quintile	2012	2013	2014	2015	2016	2017
June deadline applications	Quintile 1	575	670	640	770	735	710
	Quintile 2	1,155	1,305	1,210	1,380	1,360	1,275
	Quintile 3	2,010	2,120	2,110	2,280	2,005	2,020
	Quintile 4	3,140	3,395	3,060	3,350	3,220	3,100
	Quintile 5	6,560	6,680	6,315	6,630	6,600	6,300
Offers	Quintile 1	400	350	410	515	495	455
	Quintile 2	790	610	795	870	895	805
	Quintile 3	1,405	960	1,465	1,495	1,380	1,295
	Quintile 4	2,305	1,525	2,155	2,255	2,270	1,985
	Quintile 5	4,935	3,180	4,485	4,630	4,795	4,175
Offer rate	Quintile 1	69.1%	52.2%	63.7%	67.2%	67.3%	64.5%
	Quintile 2	68.4%	46.7%	65.7%	63.2%	65.7%	63.1%
	Quintile 3	70.0%	45.3%	69.3%	65.5%	68.9%	64.0%
	Quintile 4	73.4%	44.8%	70.4%	67.3%	70.5%	64.1%
	Quintile 5	75.3%	47.6%	71.0%	69.8%	72.6%	66.2%

P.25 Scotland domiciled applicants (all ages) by SIMD 2016 quintile

Statistic	SIMD quintile	2012	2013	2014	2015	2016	2017
June deadline applicants	Quintile 1	505	555	480	635	650	645
	Quintile 2	855	925	855	1,050	1,130	1,035
	Quintile 3	1,485	1,480	1,435	1,690	1,630	1,650
	Quintile 4	2,135	2,290	2,045	2,355	2,525	2,395
	Quintile 5	3,290	3,355	3,070	3,475	3,570	3,380
Placed June deadline applicants	Quintile 1	70	50	55	60	85	85
	Quintile 2	140	85	150	160	170	160
	Quintile 3	285	135	250	280	300	230
	Quintile 4	470	230	380	415	515	395
	Quintile 5	775	390	600	635	720	555
All placed applicants	Quintile 1	70	50	60	60	90	90
	Quintile 2	145	95	160	170	175	165
	Quintile 3	295	165	260	295	315	245
	Quintile 4	480	270	390	420	535	405
	Quintile 5	790	460	630	660	765	580

P.26 Scotland domiciled applications (all ages) by SIMD 2016 quintile

Statistic	SIMD quintile	2012	2013	2014	2015	2016	2017
June deadline applications	Quintile 1	605	655	550	705	725	720
	Quintile 2	1,105	1,135	1,035	1,245	1,285	1,185
	Quintile 3	1,825	1,835	1,705	1,960	1,880	1,925
	Quintile 4	2,635	2,820	2,465	2,750	2,870	2,810
	Quintile 5	4,045	4,105	3,680	3,960	4,080	3,905
Offers	Quintile 1	360	300	365	420	445	425
	Quintile 2	770	515	730	795	860	775
	Quintile 3	1,365	665	1,175	1,285	1,335	1,180
	Quintile 4	1,975	1,085	1,770	1,865	2,070	1,810
	Quintile 5	3,115	1,830	2,690	2,865	3,075	2,600
Offer rate	Quintile 1	59.3%	45.6%	66.2%	59.8%	61.1%	59.3%
	Quintile 2	69.8%	45.3%	70.6%	63.9%	66.7%	65.5%
	Quintile 3	74.9%	36.1%	68.9%	65.7%	71.0%	61.4%
	Quintile 4	75.0%	38.4%	71.8%	67.8%	72.2%	64.4%
	Quintile 5	77.0%	44.6%	73.2%	72.3%	75.4%	66.6%

P.27 Applicants (all ages) by ethnic group

Statistic	Ethnic group	2012	2013	2014	2015	2016	2017
June deadline applicants	Asian	640	685	805	910	830	745
	Black	235	310	355	340	280	285
	Mixed	250	300	315	350	350	295
	White	10,150	10,655	10,025	11,095	10,860	10,365
	Other	90	125	120	135	125	155
Placed June deadline applicants	Asian	65	50	70	75	75	70
	Black	20	15	30	30	30	30
	Mixed	30	25	30	55	50	20
	White	1,845	1,040	1,600	1,645	1,830	1,455
	Other	10	5	10	10	20	10
All placed applicants	Asian	75	65	95	95	100	90
	Black	35	20	45	40	40	45
	Mixed	40	40	35	65	55	30
	White	1,965	1,245	1,710	1,765	1,960	1,545
	Other	10	10	15	15	30	10

P.28 Applications (all ages) by ethnic group

Statistic	Ethnic group	2012	2013	2014	2015	2016	2017
June deadline applications	Asian	715	765	870	970	910	810
	Black	260	330	380	365	300	315
	Mixed	280	335	340	375	365	330
	White	12,045	12,570	11,570	12,465	12,135	11,725
	Other	110	140	135	150	145	165
Offers	Asian	345	250	350	435	465	385
	Black	135	120	165	195	155	155
	Mixed	185	170	215	255	285	200
	White	9,095	6,020	8,500	8,765	8,800	7,880
	Other	60	50	60	75	85	70
Offer rate	Asian	48.4%	32.6%	40.0%	44.9%	51.0%	47.8%
	Black	51.2%	35.5%	43.7%	53.1%	52.7%	50.0%
	Mixed	65.2%	51.4%	63.8%	67.6%	77.7%	61.1%
	White	75.5%	47.9%	73.5%	70.3%	72.5%	67.2%
	Other	53.2%	35.7%	45.2%	50.0%	59.7%	43.0%

Technical Notes and Definitions

UCAS undergraduate scheme

Adjustment

Adjustment allows applicants who have met and exceeded the terms of their conditional firm offer to seek and find a place at another provider whilst keeping their place at their original firm choice provider.

Clearing

Clearing is a route for applicants that are not placed and holding no offers to find a place on courses with vacancies.

Cycle year

The UCAS application cycle which runs from September to October the following year. For example the 2017 cycle runs from September 2016 through to October 2017.

End of cycle

The point in the cycle to which the numbers in this report refer, and the point at which the cycle is closed such that no more applications or offers can be made, and no more applicants can be placed. Numbers reported at the end of cycle exclude information on a small number of applicants who cancelled during the cycle.

Extra

Applicants who are unsuccessful in obtaining an offer or decline all offers may be eligible to apply through Extra, where they can apply to one further course at a time. Extra operates from 25 February until early July. It provides applicants who are eligible the possibility of obtaining an offer before exam results are published and Clearing starts.

June 30 deadline

The deadline for main scheme applications. Applicants who apply after this date will go directly into Clearing.

Record of Prior Acceptance (RPA)

RPA is an acceptance route used when a provider informs UCAS of applicants it has accepted outside of the normal application process (e.g. individuals who have applied directly to the provider).

Reporting groups

Ethnic group

High level grouping of ethnic origin as declared by the applicant: 'White', 'Black', 'Asian', 'Mixed', 'Other', 'Unknown'. Applicants who declare themselves as 'Unknown' ethnic origin are not reported in these tables, but are included in the associated csv data file.

POLAR3 quintile

Developed by HEFCE, POLAR3 classifies small areas across the UK into five groups according to their level of young participation in Higher Education. Each of these groups represents around 20 per cent of young people and is ranked from Quintile 1 (areas with the lowest young participation rates, considered as the most disadvantaged) to Quintile 5 (highest young participation rates, considered most advantaged). POLAR3 is based on the participation rates of young people between 2005 and 2009 who entered Higher Education between 2005-06 and 2010-11, therefore is most suitable for applicants aged 19 and under. These groups are assigned using the postcode declared by the applicant at the time of their application. If a UK postcode is invalid, considered unsafe for measurement or there is no link to Census geography possible then the applicant is not assigned to a quintile. Applicants with no POLAR3 quintile are not reported.

Sex

Sex as declared by the applicant.

SIMD 2016 quintile

Scottish index of multiple deprivation (SIMD) identifies small area concentrations of multiple deprivation across all of Scotland, providing a relative measure of deprivation amongst 6505 small areas (data zones) based on 7 socio-economic domains. These small areas are classified into five groups ranked from Quintile 1 (considered the most deprived) to Quintile 5 (considered least deprived), with equal populations in each quintile. Quintiles are assigned using the postcode declared by the applicant, applicants declaring invalid postcodes are classified as 'Not assigned' and are not reported.

SIMD is only defined for applicants domiciled in Scotland, therefore any applicants domiciled outside of Scotland cannot be assigned to an SIMD quintile and so are not reported for this measure.

SIMD is only reported for providers in Scotland. Application and entry rates by SIMD are reported in the 2017 End of Cycle Report and the 2017 cycle January deadline application rate report.

Statistics reported in the tables

All placed applicants

The number of applicants placed for entry into higher education at the provider through one of their choices, including any choices made through Extra, or via Adjustment, Clearing or RPA.

All placed applicants per 10,000 population

The number of total UK domiciled 18 year old placed applicants for entry into higher education at the provider divided by the number of UK 18 year olds in the population, multiplied by 10,000. This gives the number of 18 year olds, for every 10,000 in the population, that were placed at the provider through one of their choices, including any choices made through Extra, or via Adjustment, Clearing or RPA. It is an alternative way of expressing the entry rate to a provider. By referencing the underlying population this statistic shows how the number of placed applicants is changing in relation to the available pool of potential applicants and so gives the chance that somebody from the group will be placed at a provider.

This statistic is only reported for 18 year olds.

Average offer rate

The offer rate that you might expect if the predicted grades and subject choice of applicants were the only factors that influenced whether an applicant was made an offer by the provider. The average offer rate is calculated by dividing applicants according to their specific combination of grades (for A levels the best three predicted grades are used, for BTECs, International Baccalaureate and Scottish Highers and Advanced Highers, predicted grades along with any grades already achieved upon applying are used) and subject choice. For each combination the number of main scheme offers is divided by the number of main scheme applications, to give an overall offer rate. This is then multiplied by the number of applications made by the group for which the average offer rate is being calculated (for example POLAR3 quintile 1), to give an average number of offers for that group. These average number of offers are then added together across all combinations of predicted grade and subject and divided by the number of main scheme applications from the group to give the average offer rate.

The average offer rate does not attempt to control for any other factors that may play a part in the decision to make an offer, such as the subject of the qualifications studied, their relevance to a course, or the grade in each subject; higher numbers of A levels being studied; the exact profile of grades predicted; personal statements; teacher references; interviews; or any other criteria (such as work experience or portfolios) that may be part of the admissions decision.

This statistic is only reported for 18 year olds.

Contribution of group to the average offer rate

The way in which the average offer rate is defined means that the pattern of application and offers of a group (for example POLAR3 quintile 1) will always contribute, in part, to the average offer rate for that group. When this contribution is large, the average offer rate will mainly reflect the patterns for the group, meaning that the value of the average offer rate will be similar to the offer rate, the percentage point difference statistic will be small, and any real difference between the offer rate and what might be expected given the predicted grades and subject choices of the applicants will be difficult to detect.

Values of the contribution of group to the average offer rate range between 0 and 1. The closer the value is to 1 the greater the contribution a group makes to its own average offer rate.

This statistic is only reported for 18 year olds.

Placed June deadline applicants

An applicant who has been placed for entry into higher education at the provider through a June deadline application.

Placed June deadline applicants per 10,000 population

The number of UK domiciled 18 year old placed June deadline applicants at the provider divided by the number of UK 18 year olds in the population, multiplied by 10,000. This gives the number of 18 year olds, for every 10,000 in the population, that were placed at the provider through one of their June deadline applications. It is an alternative way of expressing the entry rate to a provider, but for placed June deadline applicants only. By referencing the underlying population this statistic shows how the number of placed June deadline applicants is changing in relation to the available pool of potential 18 year old applicants and so gives the chance that somebody from the group will be placed at a provider through a June deadline application.

This statistic is only reported for 18 year olds.

June deadline applications

An application (or choice) to a course in higher education to the provider that is made by the June 30 deadline. Each applicant can make up to five choices this way. The number of June deadline applications does not include choices made through the following routes: Clearing, Extra, Adjustment and RPAs. Applications made to October deadline courses received after the October deadline are not included in these statistics.

June deadline applicants

The number of applicants that made at least one application to the provider by the June 30 deadline.

June deadline applicants per 10,000 population

The number of UK domiciled 18 year old June deadline applicants to the provider divided by the number of UK 18 year olds in the population, multiplied by 10,000. This gives the number of 18 year olds, for every 10,000 in the population, who applied by the June 30 deadline. It is equivalent to the application rate. By referencing the underlying population this statistic shows how the number of June deadline applicants is changing in relation to the available pool of potential 18 year old applicants and so gives the chance that somebody from the group will apply to a provider by the June 30 deadline.

This statistic is only reported for 18 year olds.

Offers

An offer is defined as a provider's decision in response to an application to offer a place to an applicant, often subject to the applicant satisfying academic and/or other criteria, via a June deadline application (i.e. does not cover choices made through the following routes: Clearing, Extra, Adjustment and RPAs).

Offer rate

The number of offers made divided by the number of June deadline applications. This gives the proportion of all June deadline applications to the provider that received an offer.

Percentage point difference between offer rate and average offer rate

The offer rate minus the average offer rate.

The percentage point difference can be compared to the expected range of statistical variation resulting from the calculation of the average offer rate using the Average Offer Rate Lookup Table. Where the value of the percentage point difference lies outside of this range, the percentage point difference may be considered to represent a real difference between the offer rate and the average offer rate.

Other definitions

Age

This analysis uses country-specific age definitions that align with the cut off points for school and college cohorts within the different administrations of the UK. For England and Wales, ages are defined on the 31 August, for Northern Ireland on the 1 July and for Scotland on the 28 February the following year. Defining ages in this way matches the assignment of children to school cohorts. For applicants outside of the UK a cohort cut off of 31 August has been used. Numbers for applicants aged 17 and under are included in the tables that report numbers for all age groups. Providers in Scotland typically receive a higher proportion of applicants aged 17 and under compared to providers elsewhere in the UK.

Provider

A higher education provider - a university or college.

UK domiciled

Declared area of permanent residence within England, Northern Ireland, Scotland and Wales. Applicants from the Channel Islands and Isle of Man are not included.