

Welsh providers

Cycle years: 2011 - 2016

Cycle Reference Point: End of Cycle

Applicant coverage: UK domiciled

Reporting groups: Sex, POLAR3, ethnic group

Applicant statistics: June deadline applicants, placed June deadline applicants, all placed applicants, June deadline applicants per 10,000 population, placed June deadline applicants per 10,000 population, all placed applicants per 10,000 population

Application statistics: June deadline applications, offers, offer rate, average offer rate, percentage point difference between offer rate and average offer rate, contribution of group to the average offer rate

Non-disclosure controls: To avoid the disclosure of information about any individual the following measures are taken

- Applicants, placed applicants, applications and offers are rounded to the nearest 5.
- Applicants/placed applicants per 10,000 population figures are reported as 0 if the applicant/placed applicant figures are rounded to 0.
- All statistics related to the offer rate are not reported when the number of applications for a group is less than 10. The percentage point difference between the offer rate and the average offer rate is not reported when the number of applications for a group is less than 50.
- Offer rates are reported as 0% if there are fewer than 5 offers, and 100% if the number of offers is within 5 of the number of applications. When the offer rate is reported as 0% or 100%, it is reported in italics.

Contents:

18 year old applicants:	P.1
18 year old applications:	P.2
18 year old applicants by sex:	P.3
18 year old applications by sex:	P.4
18 year old applicants by POLAR3 quintile:	P.7
18 year old applications by POLAR3 quintile:	P.8
18 year old applicants by ethnic group:	P.11
18 year old applications by ethnic group:	P.12
Applicants (all ages):	P.15
Applications (all ages):	P.16
Applicants (all ages) by sex:	P.17
Applications (all ages) by sex:	P.18
Applicants (all ages) by POLAR3 quintile:	P.19
Applications (all ages) by POLAR3 quintile:	P.20
Applicants (all ages) by ethnic group:	P.21
Applications (all ages) by ethnic group:	P.22

P.1 18 year old applicants

Statistic	2011	2012	2013	2014	2015	2016
June deadline applicants	36,650	33,545	35,420	37,080	37,480	37,955
Placed June deadline applicants	10,690	9,825	10,330	10,250	10,170	10,310
All placed applicants	13,245	11,890	12,050	12,145	12,025	12,595
June deadline applicants per 10,000 population	475.9	433.7	465.4	492.3	489.2	506.4
Placed June deadline applicants per 10,000	138.8	127.0	135.8	136.1	132.8	137.5
All placed applicants per 10,000 population	172.0	153.7	158.3	161.2	157.0	168.0

P.2 18 year old applications

Statistic	2011	2012	2013	2014	2015	2016
June deadline applications	56,400	50,910	52,485	53,430	53,340	53,570
Offers	42,855	40,470	43,370	44,695	44,950	45,140
Offer rate	76.0%	79.5%	82.6%	83.7%	84.3%	84.3%

P.3 18 year old applicants by sex

Statistic	Sex	2011	2012	2013	2014	2015	2016
June deadline applicants	Men	16,455	14,760	15,895	16,935	16,900	16,855
	Women	20,200	18,785	19,525	20,145	20,575	21,100
Placed June deadline applicants	Men	4,880	4,395	4,745	4,760	4,665	4,645
	Women	5,805	5,435	5,585	5,490	5,510	5,665
All placed applicants	Men	6,130	5,425	5,570	5,695	5,520	5,730
	Women	7,115	6,470	6,480	6,445	6,505	6,865
June deadline applicants per 10,000 population	Men	418.1	372.1	407.1	437.5	430.7	438.8
	Women	536.3	498.4	526.9	550.3	550.6	577.4
Placed June deadline applicants per 10,000 population	Men	124.0	110.8	121.6	123.0	118.8	120.9
	Women	154.2	144.2	150.7	149.9	147.4	155.0
All placed applicants per 10,000 population	Men	155.8	136.7	142.6	147.2	140.7	149.2
	Women	188.9	171.6	174.9	176.1	174.0	187.8

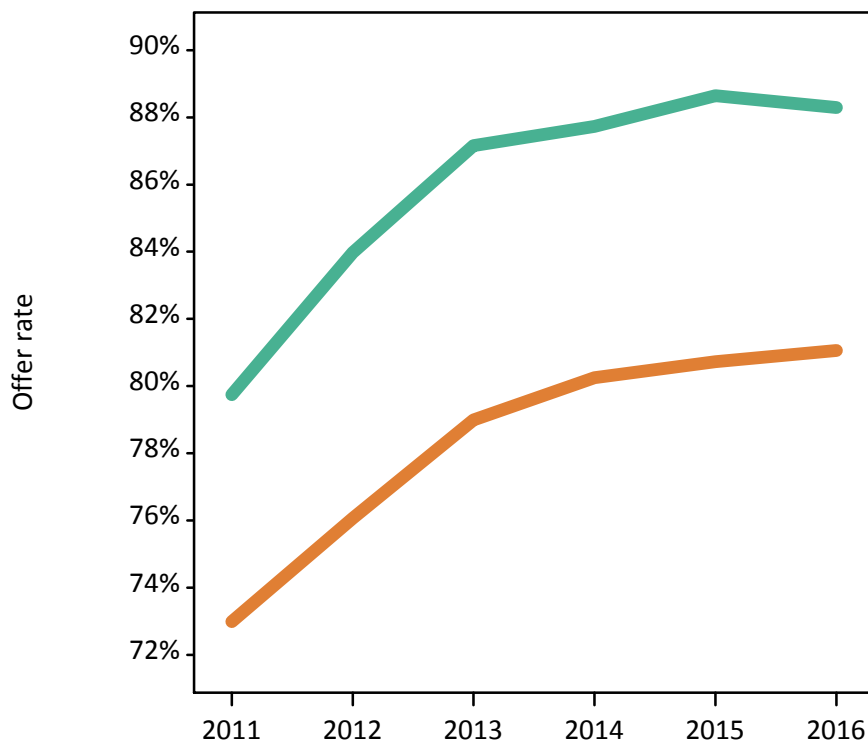
P.4 18 year old applications by sex

Statistic	Sex	2011	2012	2013	2014	2015	2016
June deadline applications	Men	24,985	22,055	23,385	24,305	23,930	23,710
	Women	31,415	28,855	29,100	29,125	29,410	29,860
Offers	Men	19,925	18,520	20,385	21,320	21,210	20,935
	Women	22,930	21,950	22,985	23,375	23,740	24,200
Offer rate	Men	79.7%	84.0%	87.2%	87.7%	88.6%	88.3%
	Women	73.0%	76.1%	79.0%	80.3%	80.7%	81.1%
Average offer rate	Men	80.4%	84.4%	87.6%	88.2%	88.9%	88.7%
	Women	72.5%	75.7%	78.6%	79.9%	80.5%	80.7%
Percentage point difference between offer rate and average offer rate	Men	-0.7	-0.4	-0.4	-0.5	-0.3	-0.4
	Women	0.5	0.3	0.4	0.4	0.2	0.3
Contribution of group to the average offer rate	Men	0.621	0.618	0.630	0.638	0.636	0.625
	Women	0.698	0.708	0.703	0.698	0.704	0.703

P.5 18 year old offer rate by sex

Note: The line for a group is not plotted when that group made fewer than 10 applications in any of the years from 2011-2016.

Men
Women



P.6 Percentage point difference between 18 year old offer rate and average offer rate by sex

Note: The line for a group is not plotted when that group made fewer than 50 applications in any of the years from 2011-2016.

Men
Women



P.7 18 year old applicants by POLAR3 quintile

Statistic	POLAR3 quintile	2011	2012	2013	2014	2015	2016
June deadline applicants	Quintile 1	3,870	3,590	3,670	4,140	4,260	4,150
	Quintile 2	5,745	5,435	5,540	5,665	5,920	6,090
	Quintile 3	6,735	6,185	6,500	6,830	6,835	6,950
	Quintile 4	9,040	8,115	8,665	8,785	9,090	8,865
	Quintile 5	11,195	10,155	10,995	11,595	11,290	11,760
Placed June deadline applicants	Quintile 1	1,260	1,200	1,225	1,390	1,405	1,310
	Quintile 2	1,950	1,825	1,955	1,930	1,990	1,975
	Quintile 3	2,010	1,835	1,890	2,010	1,850	1,955
	Quintile 4	2,560	2,345	2,485	2,290	2,355	2,365
	Quintile 5	2,885	2,605	2,770	2,610	2,555	2,665
All placed applicants	Quintile 1	1,495	1,430	1,415	1,600	1,620	1,575
	Quintile 2	2,325	2,155	2,235	2,220	2,290	2,340
	Quintile 3	2,455	2,160	2,185	2,375	2,195	2,330
	Quintile 4	3,205	2,820	2,890	2,720	2,770	2,885
	Quintile 5	3,740	3,300	3,300	3,200	3,125	3,420
June deadline applicants per 10,000 population	Quintile 1	269.1	251.9	263.5	297.6	303.9	307.2
	Quintile 2	382.3	362.5	375.8	387.3	398.6	421.3
	Quintile 3	437.8	400.4	426.1	453.9	445.2	462.2
	Quintile 4	577.0	511.3	554.0	570.1	580.7	574.3
	Quintile 5	676.3	604.4	664.9	710.8	674.5	711.7
Placed June deadline applicants per 10,000 population	Quintile 1	87.7	84.3	87.8	100.0	100.4	97.1
	Quintile 2	129.6	121.8	132.5	131.8	133.8	136.7
	Quintile 3	130.7	118.8	123.8	133.6	120.3	130.0
	Quintile 4	163.6	147.7	158.8	148.5	150.4	153.2
	Quintile 5	174.4	155.1	167.4	159.9	152.5	161.3
All placed applicants per 10,000 population	Quintile 1	103.9	100.4	101.5	115.0	115.8	116.5
	Quintile 2	154.6	143.7	151.5	151.6	154.1	161.7
	Quintile 3	159.5	139.9	143.4	157.9	142.9	155.1
	Quintile 4	204.7	177.8	184.8	176.6	176.8	187.0
	Quintile 5	225.9	196.5	199.5	196.3	186.8	207.1

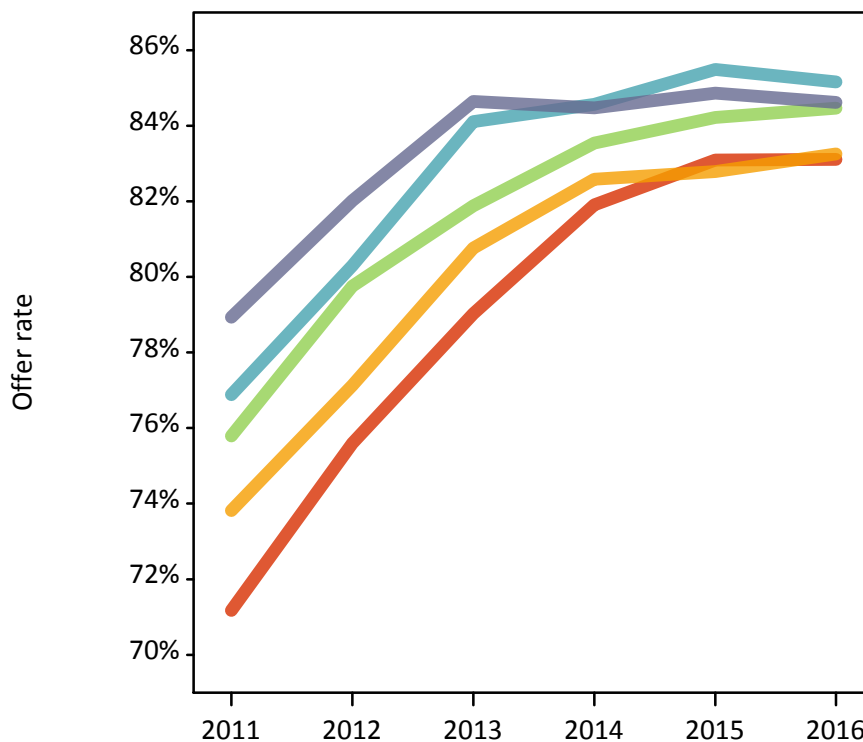
P.8 18 year old applications by POLAR3 quintile

Statistic	POLAR3 quintile	2011	2012	2013	2014	2015	2016
June deadline applications	Quintile 1	6,915	6,350	6,245	6,880	6,870	6,665
	Quintile 2	10,165	9,395	9,420	9,400	9,615	9,750
	Quintile 3	10,535	9,485	9,795	10,190	9,850	10,010
	Quintile 4	13,415	11,800	12,350	12,145	12,535	12,150
	Quintile 5	15,270	13,790	14,590	14,725	14,350	14,805
Offers	Quintile 1	4,920	4,800	4,935	5,635	5,710	5,540
	Quintile 2	7,505	7,250	7,610	7,765	7,960	8,120
	Quintile 3	7,985	7,565	8,020	8,515	8,295	8,455
	Quintile 4	10,315	9,475	10,385	10,270	10,720	10,345
	Quintile 5	12,055	11,310	12,350	12,440	12,180	12,530
Offer rate	Quintile 1	71.2%	75.6%	79.0%	81.9%	83.1%	83.1%
	Quintile 2	73.8%	77.1%	80.8%	82.6%	82.8%	83.3%
	Quintile 3	75.8%	79.8%	81.9%	83.5%	84.2%	84.5%
	Quintile 4	76.9%	80.3%	84.1%	84.6%	85.5%	85.2%
	Quintile 5	78.9%	82.0%	84.6%	84.5%	84.9%	84.6%
Average offer rate	Quintile 1	73.1%	76.4%	79.7%	82.7%	83.6%	83.5%
	Quintile 2	74.6%	77.8%	80.9%	82.3%	83.4%	83.5%
	Quintile 3	75.7%	79.8%	82.2%	83.7%	84.1%	84.8%
	Quintile 4	76.5%	80.2%	83.9%	84.6%	85.4%	85.0%
	Quintile 5	78.0%	81.3%	84.2%	84.1%	84.4%	84.2%
Percentage point difference between offer rate and average offer rate	Quintile 1	-1.9	-0.8	-0.7	-0.7	-0.5	-0.4
	Quintile 2	-0.8	-0.7	-0.1	0.2	-0.6	-0.2
	Quintile 3	0.1	-0.0	-0.3	-0.2	0.1	-0.3
	Quintile 4	0.4	0.1	0.2	-0.0	0.1	0.2
	Quintile 5	1.0	0.8	0.4	0.3	0.4	0.4
Contribution of group to the average offer rate	Quintile 1	0.251	0.260	0.254	0.259	0.261	0.253
	Quintile 2	0.293	0.298	0.292	0.286	0.290	0.293
	Quintile 3	0.287	0.288	0.284	0.282	0.278	0.280
	Quintile 4	0.331	0.324	0.326	0.318	0.322	0.314
	Quintile 5	0.379	0.382	0.387	0.385	0.378	0.386

P.9 18 year old offer rate by POLAR3 quintile

Note: The line for a group is not plotted when that group made fewer than 10 applications in any of the years from 2011-2016.

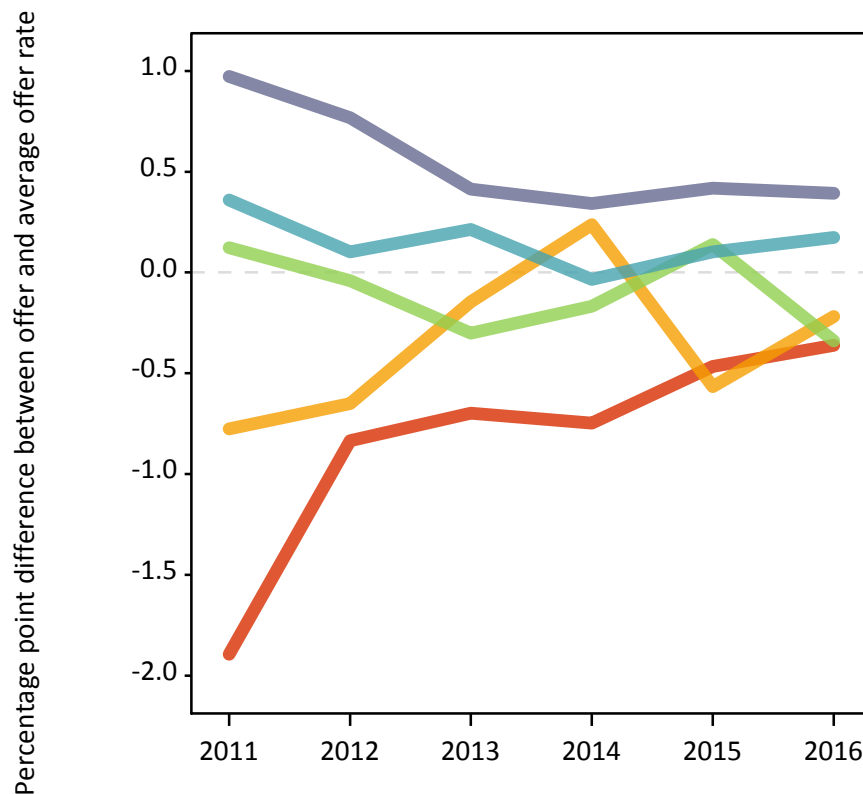
- Quintile 1
- Quintile 2
- Quintile 3
- Quintile 4
- Quintile 5



P.10 Percentage point difference between 18 year old offer rate and average offer rate by POLAR3 quintile

Note: The line for a group is not plotted when that group made fewer than 50 applications in any of the years from 2011-2016.

- Quintile 1
- Quintile 2
- Quintile 3
- Quintile 4
- Quintile 5



P.11 18 year old applicants by ethnic group

Statistic	Ethnic group	2011	2012	2013	2014	2015	2016
June deadline applicants	Asian	1,395	1,390	1,730	2,270	2,295	2,560
	Black	360	430	570	725	780	820
	Mixed	920	810	965	1,105	1,245	1,265
	White	33,680	30,635	31,865	32,550	32,705	32,770
	Other	130	160	170	285	275	330
Placed June deadline applicants	Asian	225	235	320	375	350	375
	Black	50	75	100	110	120	125
	Mixed	190	175	215	225	280	270
	White	10,160	9,275	9,635	9,465	9,335	9,440
	Other	30	35	35	35	55	55
All placed applicants	Asian	380	375	430	500	500	545
	Black	145	150	160	190	180	200
	Mixed	275	235	285	285	345	365
	White	12,325	11,010	11,060	11,065	10,885	11,330
	Other	45	45	50	60	70	90
June deadline applicants per 10,000 population	Asian	221.2	214.3	262.0	334.9	324.4	355.9
	Black	131.3	152.7	192.0	239.8	244.4	262.7
	Mixed	379.0	310.2	356.2	384.4	404.1	402.1
	White	520.2	474.4	506.4	527.6	524.9	541.8
	Other	159.3	181.9	186.4	308.4	284.3	333.4
Placed June deadline applicants per 10,000 population	Asian	35.4	36.1	48.5	55.0	49.7	52.1
	Black	18.3	27.3	34.0	36.9	37.1	40.3
	Mixed	79.3	67.2	79.1	78.9	91.1	85.8
	White	156.9	143.6	153.1	153.4	149.8	156.1
	Other	37.0	38.4	39.7	38.7	58.1	56.4
All placed applicants per 10,000 population	Asian	60.3	58.1	65.3	73.7	70.6	76.0
	Black	52.7	53.3	54.6	62.0	56.5	63.6
	Mixed	113.5	90.2	104.7	99.4	112.2	116.7
	White	190.4	170.5	175.8	179.3	174.7	187.3
	Other	58.0	50.9	56.2	63.4	70.5	91.7

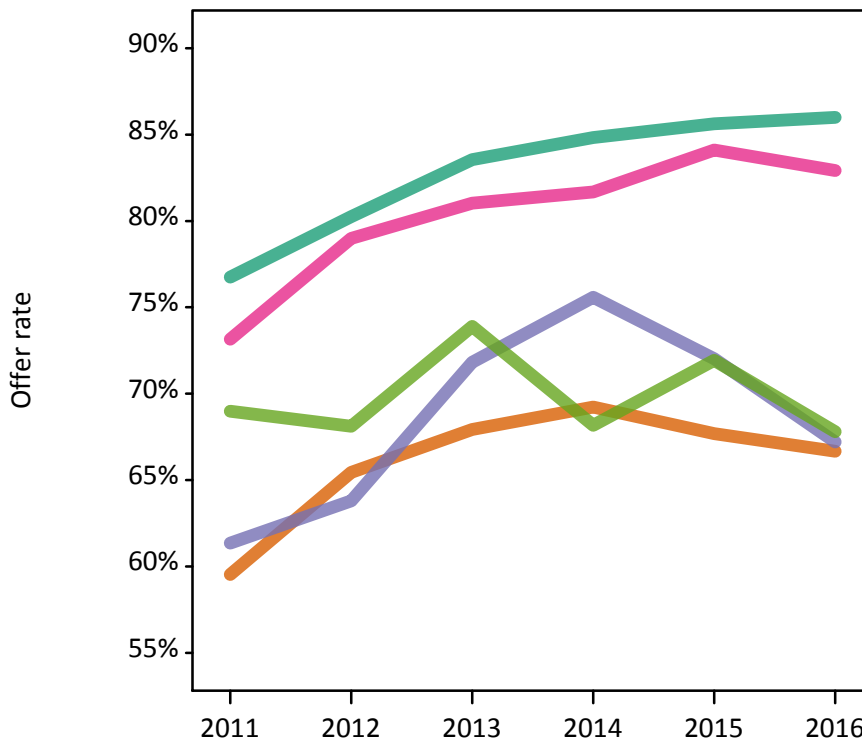
P.12 18 year old applications by ethnic group

Statistic	Ethnic group	2011	2012	2013	2014	2015	2016
June deadline applications	Asian	1,805	1,785	2,160	2,790	2,830	3,100
	Black	430	535	680	890	925	1,005
	Mixed	1,205	1,020	1,220	1,410	1,560	1,560
	White	52,565	47,205	48,040	47,790	47,440	47,220
	Other	160	205	225	375	365	445
Offers	Asian	1,075	1,170	1,470	1,930	1,915	2,065
	Black	265	340	485	670	665	675
	Mixed	880	805	985	1,150	1,310	1,290
	White	40,340	37,890	40,140	40,540	40,620	40,605
	Other	110	140	165	255	265	300
Offer rate	Asian	59.5%	65.5%	67.9%	69.2%	67.7%	66.7%
	Black	61.3%	63.8%	71.8%	75.6%	72.0%	67.2%
	Mixed	73.2%	79.0%	81.0%	81.7%	84.1%	82.9%
	White	76.7%	80.3%	83.6%	84.8%	85.6%	86.0%
	Other	69.0%	68.1%	73.9%	68.2%	71.9%	67.8%
Average offer rate	Asian	62.6%	67.2%	70.2%	71.1%	70.4%	68.8%
	Black	65.8%	71.0%	75.2%	77.5%	76.0%	73.6%
	Mixed	74.9%	78.9%	81.6%	82.4%	84.2%	83.4%
	White	76.6%	80.1%	83.4%	84.6%	85.4%	85.7%
	Other	72.1%	71.9%	77.9%	72.5%	74.5%	71.6%
Percentage point difference between offer rate and average offer rate	Asian	-3.1	-1.7	-2.2	-1.8	-2.7	-2.1
	Black	-4.5	-7.2	-3.3	-1.9	-4.0	-6.4
	Mixed	-1.7	0.1	-0.5	-0.7	-0.1	-0.5
	White	0.2	0.2	0.2	0.2	0.3	0.3
	Other	-3.1	-3.8	-4.0	-4.3	-2.5	-3.8
Contribution of group to the average offer rate	Asian	0.229	0.215	0.242	0.222	0.227	0.233
	Black	0.144	0.167	0.133	0.153	0.155	0.140
	Mixed	0.135	0.131	0.141	0.122	0.131	0.134
	White	0.944	0.940	0.932	0.914	0.910	0.905
	Other	0.102	0.119	0.146	0.119	0.123	0.112

P.13 18 year old offer rate by ethnic group

Note: The line for a group is not plotted when that group made fewer than 10 applications in any of the years from 2011-2016.

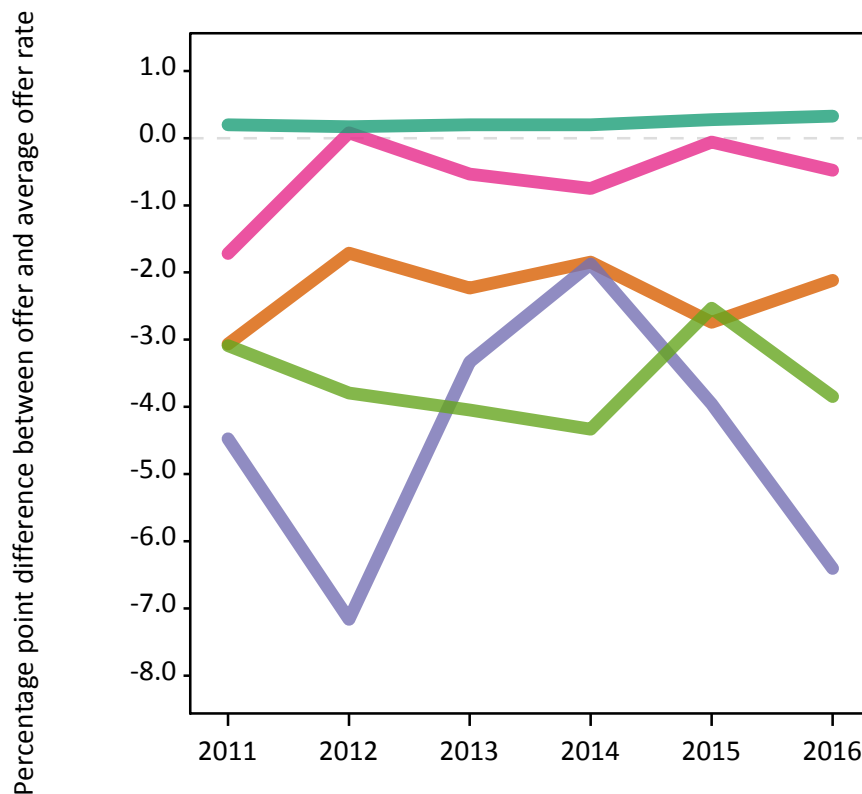
- Asian
- Black
- Mixed
- White
- Other



P.14 Percentage point difference between 18 year old offer rate and average offer rate by ethnic group

Note: The line for a group is not plotted when that group made fewer than 50 applications in any of the years from 2011-2016.

- Asian
- Black
- Mixed
- White
- Other



P.15 Applicants (all ages)

Statistic	2011	2012	2013	2014	2015	2016
June deadline applicants	64,160	57,330	60,700	63,290	63,785	63,830
Placed June deadline applicants	18,695	16,955	18,400	18,550	18,425	18,565
All placed applicants	23,470	21,595	22,845	22,845	22,645	23,235

P.16 Applications (all ages)

Statistic	2011	2012	2013	2014	2015	2016
June deadline applications	100,000	89,880	92,110	93,730	93,115	92,955
Offers	64,450	60,665	66,150	68,925	69,365	69,225
Offer rate	64.5%	67.5%	71.8%	73.5%	74.5%	74.5%

P.17 Applicants (all ages) by sex

Statistic	Sex	2011	2012	2013	2014	2015	2016
June deadline applicants	Men	28,835	25,040	27,170	28,690	28,770	28,115
	Women	35,325	32,290	33,530	34,600	35,015	35,715
Placed June deadline applicants	Men	8,520	7,745	8,550	8,515	8,410	8,195
	Women	10,175	9,210	9,850	10,035	10,020	10,365
All placed applicants	Men	10,940	10,065	10,745	10,585	10,385	10,390
	Women	12,530	11,530	12,100	12,265	12,260	12,845

P.18 Applications (all ages) by sex

Statistic	Sex	2011	2012	2013	2014	2015	2016
June deadline applications	Men	43,930	38,355	40,525	41,920	41,330	40,325
	Women	56,070	51,525	51,585	51,810	51,785	52,630
Offers	Men	30,635	28,495	32,005	33,385	33,300	32,440
	Women	33,815	32,170	34,145	35,540	36,065	36,780
Offer rate	Men	69.7%	74.3%	79.0%	79.6%	80.6%	80.5%
	Women	60.3%	62.4%	66.2%	68.6%	69.6%	69.9%

P.19 Applicants (all ages) by POLAR3 quintile

Statistic	POLAR3 quintile	2011	2012	2013	2014	2015	2016
June deadline applicants	Quintile 1	8,270	7,665	7,865	8,485	8,590	8,400
	Quintile 2	11,025	10,110	10,360	10,665	11,020	11,120
	Quintile 3	11,950	10,610	11,220	11,790	11,725	11,920
	Quintile 4	15,025	13,105	14,080	14,440	14,760	14,335
	Quintile 5	17,720	15,695	17,050	17,785	17,515	17,785
Placed June deadline applicants	Quintile 1	2,630	2,505	2,710	2,975	2,970	2,875
	Quintile 2	3,690	3,370	3,680	3,715	3,785	3,810
	Quintile 3	3,520	3,130	3,335	3,500	3,335	3,485
	Quintile 4	4,265	3,820	4,155	4,010	4,055	3,975
	Quintile 5	4,545	4,090	4,495	4,320	4,235	4,340
All placed applicants	Quintile 1	3,270	3,205	3,400	3,635	3,640	3,595
	Quintile 2	4,490	4,230	4,550	4,510	4,580	4,720
	Quintile 3	4,385	3,880	4,090	4,305	4,110	4,275
	Quintile 4	5,375	4,790	5,055	4,915	4,960	4,985
	Quintile 5	5,880	5,350	5,610	5,410	5,295	5,555

P.20 Applications (all ages) by POLAR3 quintile

Statistic	POLAR3 quintile	2011	2012	2013	2014	2015	2016
June deadline applications	Quintile 1	14,730	13,775	13,730	14,305	14,180	13,765
	Quintile 2	19,365	17,870	17,770	17,770	18,015	18,280
	Quintile 3	18,795	16,620	17,025	17,665	17,215	17,435
	Quintile 4	22,320	19,590	20,400	20,425	20,685	19,975
	Quintile 5	24,535	21,830	23,000	23,405	22,775	23,110
Offers	Quintile 1	8,475	8,405	8,955	9,920	10,030	9,755
	Quintile 2	11,975	11,465	12,280	12,660	13,010	13,105
	Quintile 3	12,050	11,225	12,105	12,935	12,815	12,925
	Quintile 4	14,830	13,660	15,200	15,375	15,790	15,310
	Quintile 5	16,975	15,790	17,495	17,920	17,565	17,860
Offer rate	Quintile 1	57.5%	61.0%	65.2%	69.3%	70.7%	70.9%
	Quintile 2	61.8%	64.1%	69.1%	71.2%	72.2%	71.7%
	Quintile 3	64.1%	67.5%	71.1%	73.2%	74.4%	74.1%
	Quintile 4	66.4%	69.7%	74.5%	75.3%	76.3%	76.6%
	Quintile 5	69.2%	72.3%	76.1%	76.6%	77.1%	77.3%

P.21 Applicants (all ages) by ethnic group

Statistic	Ethnic group	2011	2012	2013	2014	2015	2016
June deadline applicants	Asian	2,965	2,950	3,405	4,195	4,395	4,575
	Black	1,470	1,535	1,745	1,935	2,105	2,170
	Mixed	1,690	1,475	1,710	1,910	2,110	2,185
	White	57,310	50,635	53,045	54,280	54,130	53,720
	Other	330	425	475	620	630	725
Placed June deadline applicants	Asian	470	505	640	700	710	715
	Black	240	260	300	320	345	370
	Mixed	375	325	400	425	510	505
	White	17,465	15,695	16,880	16,925	16,665	16,730
	Other	70	90	100	95	120	145
All placed applicants	Asian	785	800	900	985	1,025	1,065
	Black	480	495	530	525	560	595
	Mixed	515	470	535	555	645	675
	White	21,160	19,195	20,290	20,400	20,075	20,410
	Other	105	135	150	160	170	220

P.22 Applications (all ages) by ethnic group

Statistic	Ethnic group	2011	2012	2013	2014	2015	2016
June deadline applications	Asian	4,000	4,030	4,495	5,395	5,595	5,725
	Black	2,025	2,215	2,350	2,630	2,740	2,960
	Mixed	2,300	2,040	2,275	2,530	2,750	2,780
	White	90,695	80,580	81,890	81,815	80,650	79,915
	Other	445	610	660	895	855	1,020
Offers	Asian	1,930	2,180	2,600	3,210	3,315	3,375
	Black	785	885	1,075	1,415	1,390	1,465
	Mixed	1,450	1,355	1,565	1,825	2,070	2,050
	White	59,755	55,695	60,240	61,655	61,720	61,365
	Other	210	310	395	510	540	600
Offer rate	Asian	48.3%	54.2%	57.9%	59.5%	59.3%	58.9%
	Black	38.9%	39.9%	45.8%	53.9%	50.8%	49.5%
	Mixed	63.0%	66.4%	68.7%	72.1%	75.4%	73.8%
	White	65.9%	69.1%	73.6%	75.4%	76.5%	76.8%
	Other	47.9%	50.7%	59.9%	56.9%	63.0%	59.0%

Technical Notes and Definitions

UCAS undergraduate scheme

Adjustment

Adjustment allows applicants who have met and exceeded the terms of their conditional firm offer to seek and find a place at another provider whilst keeping their place at their original firm choice provider.

Clearing

Clearing is a route for applicants that are not placed and holding no offers to find a place on courses with vacancies.

Cycle year

The UCAS application cycle which runs from September to October the following year. For example the 2016 cycle runs from September 2015 through to October 2016.

End of cycle

The point in the cycle to which the numbers in this report refer, and the point at which the cycle is closed such that no more applications or offers can be made, and no more applicants can be placed. Numbers reported at the end of cycle exclude information on a small number of applicants who cancelled during the cycle.

Extra

Applicants who are unsuccessful in obtaining an offer or decline all offers may be eligible to apply through Extra, where they can apply to one further course at a time. Extra operates from 25 February until early July. It provides applicants who are eligible the possibility of obtaining an offer before exam results are published and Clearing starts.

June 30 deadline

The deadline for main scheme applications. Applicants who apply after this date will go directly into Clearing.

Record of Prior Acceptance (RPA)

RPA is an acceptance route used when a provider informs UCAS of applicants it has accepted outside of the normal application process (e.g. individuals who have applied directly to the provider).

Reporting groups

Ethnic group

High level grouping of ethnic origin as declared by the applicant: 'White', 'Black', 'Asian', 'Mixed', 'Other', 'Unknown'. Applicants who declare themselves as 'Unknown' ethnic origin are not reported in these tables, but are included in the associated csv data file.

POLAR3 quintile

Developed by HEFCE, POLAR3 classifies small areas across the UK into five groups according to their level of young participation in Higher Education. Each of these groups represents around 20 per cent of young people and is ranked from Quintile 1 (areas with the lowest young participation rates, considered as the most disadvantaged) to Quintile 5 (highest young participation rates, considered most advantaged). POLAR3 is based on the participation rates of young people between 2005 and 2009 who entered Higher Education between 2005-06 and 2010-11, therefore is most suitable for applicants aged 19 and under. These groups are assigned using the postcode declared by the applicant at the time of their application. If a UK postcode is invalid, considered unsafe for measurement or there is no link to Census geography possible then the applicant is not assigned to a quintile. Applicants with no POLAR3 quintile are not reported.

Sex

Sex as declared by the applicant.

SIMD quintile

Scottish index of multiple deprivation (SIMD) for 2012 identifies small area concentrations of multiple deprivation across all of Scotland, providing a relative measure of deprivation amongst 6505 small areas (data zones) based on 7 socio-economic domains. These small areas are classified into five groups ranked from Quintile 1 (considered the most deprived) to Quintile 5 (considered least deprived), with equal populations in each quintile. Quintiles are assigned using the postcode declared by the applicant, applicants declaring invalid postcodes are classified as 'Not assigned' and are not reported.

SIMD is only defined for applicants domiciled in Scotland, therefore any applicants domiciled outside of Scotland cannot be assigned to an SIMD quintile and so are not reported for this measure.

SIMD is only reported for providers in Scotland. Application and entry rates by SIMD are reported in the 2016 End of Cycle Report and the 2016 cycle January deadline application rate report.

Statistics reported in the tables

All placed applicants

The number of applicants placed for entry into higher education at the provider through one of their choices, including any choices made through Extra, or via Adjustment, Clearing or RPA.

All placed applicants per 10,000 population

The number of total UK domiciled 18 year old placed applicants for entry into higher education at the provider divided by the number of UK 18 year olds in the population, multiplied by 10,000. This gives the number of 18 year olds, for every 10,000 in the population, that were placed at the provider through one of their choices, including any choices made through Extra, or via Adjustment, Clearing or RPA. It is an alternative way of expressing the entry rate to a provider. By referencing the underlying population this statistic shows how the number of placed applicants is changing in relation to the available pool of potential applicants and so gives the chance that somebody from the group will be placed at a provider.

This statistic is only reported for 18 year olds.

Average offer rate

The offer rate that you might expect if the predicted grades and subject choice of applicants were the only factors that influenced whether an applicant was made an offer by the provider. The average offer rate is calculated by dividing applicants according to their specific combination of grades (for A levels the best three predicted grades are used, for BTECs, International Baccalaureate and Scottish Highers and Advanced Highers, predicted grades along with any grades already achieved upon applying are used) and subject choice. For each combination the number of main scheme offers is divided by the number of main scheme applications, to give an overall offer rate. This is then multiplied by the number of applications made by the group for which the average offer rate is being calculated (for example POLAR3 quintile 1), to give an average number of offers for that group. These average number of offers are then added together across all combinations of predicted grade and subject and divided by the number of main scheme applications from the group to give the average offer rate.

The average offer rate does not attempt to control for any other factors that may play a part in the decision to make an offer, such as the subject of the qualifications studied, their relevance to a course, or the grade in each subject; higher numbers of A levels being studied; the exact profile of grades predicted; personal statements; teacher references; interviews; or any other criteria (such as work experience or portfolios) that may be part of the admissions decision.

This statistic is only reported for 18 year olds.

Contribution of group to the average offer rate

The way in which the average offer rate is defined means that the pattern of application and offers of a group (for example POLAR3 quintile 1) will always contribute, in part, to the average offer rate for that group. When this contribution is large, the average offer rate will mainly reflect the patterns for the group, meaning that the value of the average offer rate will be similar to the offer rate, the percentage point difference statistic will be small, and any real difference between the offer rate and what might be expected given the predicted grades and subject choices of the applicants will be difficult to detect.

Values of the contribution of group to the average offer rate range between 0 and 1. The closer the value is to 1 the greater the contribution a group makes to its own average offer rate.

This statistic is only reported for 18 year olds.

Placed June deadline applicants

An applicant who has been placed for entry into higher education at the provider through a June deadline application.

Placed June deadline applicants per 10,000 population

The number of UK domiciled 18 year old placed June deadline applicants at the provider divided by the number of UK 18 year olds in the population, multiplied by 10,000. This gives the number of 18 year olds, for every 10,000 in the population, that were placed at the provider through one of their June deadline applications. It is an alternative way of expressing the entry rate to a provider, but for placed June deadline applicants only. By referencing the underlying population this statistic shows how the number of placed June deadline applicants is changing in relation to the available pool of potential 18 year old applicants and so gives the chance that somebody from the group will be placed at a provider through a June deadline application.

This statistic is only reported for 18 year olds.

June deadline applications

An application (or choice) to a course in higher education to the provider that is made by the June 30 deadline. Each applicant can make up to five choices this way. The number of June deadline applications does not include choices made through the following routes: Clearing, Extra, Adjustment and RPAs. Applications made to October deadline courses received after the October deadline are not included in these statistics.

June deadline applicants

The number of applicants that made at least one application to the provider by the June 30 deadline.

June deadline applicants per 10,000 population

The number of UK domiciled 18 year old June deadline applicants to the provider divided by the number of UK 18 year olds in the population, multiplied by 10,000. This gives the number of 18 year olds, for every 10,000 in the population, who applied by the June 30 deadline. It is equivalent to the application rate. By referencing the underlying population this statistic shows how the number of June deadline applicants is changing in relation to the available pool of potential 18 year old applicants and so gives the chance that somebody from the group will apply to a provider by the June 30 deadline.

This statistic is only reported for 18 year olds.

Offers

An offer is defined as a provider's decision in response to an application to offer a place to an applicant, often subject to the applicant satisfying academic and/or other criteria, via a June deadline application (i.e. does not cover choices made through the following routes: Clearing, Extra, Adjustment and RPAs).

Offer rate

The number of offers made divided by the number of June deadline applications. This gives the proportion of all June deadline applications to the provider that received an offer.

Percentage point difference between offer rate and average offer rate

The offer rate minus the average offer rate.

The percentage point difference can be compared to the expected range of statistical variation resulting from the calculation of the average offer rate using the Average Offer Rate Lookup Table. Where the value of the percentage point difference lies outside of this range, the percentage point difference may be considered to represent a real difference between the offer rate and the average offer rate.

Other definitions

Age

This analysis uses country-specific age definitions that align with the cut off points for school and college cohorts within the different administrations of the UK. For England and Wales, ages are defined on the 31 August, for Northern Ireland on the 1 July and for Scotland on the 28 February the following year. Defining ages in this way matches the assignment of children to school cohorts. For applicants outside of the UK a cohort cut off of 31 August has been used.

Provider

A higher education provider - a university or college.

UK domiciled

Declared area of permanent residence within England, Northern Ireland, Scotland and Wales. Applicants from the Channel Islands and Isle of Man are not included.