

## L41 The University of Liverpool

**Cycle years:** 2011 - 2016

**Cycle Reference Point:** End of Cycle

**Applicant coverage:** UK domiciled

**Reporting groups:** Sex, POLAR3, ethnic group

**Applicant statistics:** June deadline applicants, placed June deadline applicants, all placed applicants, June deadline applicants per 10,000 population, placed June deadline applicants per 10,000 population, all placed applicants per 10,000 population

**Application statistics:** June deadline applications, offers, offer rate, average offer rate, percentage point difference between offer rate and average offer rate, contribution of group to the average offer rate

**Non-disclosure controls:** To avoid the disclosure of information about any individual the following measures are taken

- Applicants, placed applicants, applications and offers are rounded to the nearest 5.
- Applicants/placed applicants per 10,000 population figures are reported as 0 if the applicant/placed applicant figures are rounded to 0.
- All statistics related to the offer rate are not reported when the number of applications for a group is less than 10. The percentage point difference between the offer rate and the average offer rate is not reported when the number of applications for a group is less than 50.
- Offer rates are reported as 0% if there are fewer than 5 offers, and 100% if the number of offers is within 5 of the number of applications. When the offer rate is reported as 0% or 100%, it is reported in italics.

### Contents:

18 year old applicants:	P.1
18 year old applications:	P.2
18 year old applicants by sex:	P.3
18 year old applications by sex:	P.4
18 year old applicants by POLAR3 quintile:	P.7
18 year old applications by POLAR3 quintile:	P.8
18 year old applicants by ethnic group:	P.11
18 year old applications by ethnic group:	P.12
Applicants (all ages):	P.15
Applications (all ages):	P.16
Applicants (all ages) by sex:	P.17
Applications (all ages) by sex:	P.18
Applicants (all ages) by POLAR3 quintile:	P.19
Applications (all ages) by POLAR3 quintile:	P.20
Applicants (all ages) by ethnic group:	P.21
Applications (all ages) by ethnic group:	P.22

## P.1 18 year old applicants

Statistic	2011	2012	2013	2014	2015	2016
June deadline applicants	17,055	15,570	17,520	18,330	22,840	22,495
Placed June deadline applicants	2,220	1,990	2,310	2,615	3,165	3,280
All placed applicants	2,410	2,355	2,500	2,840	3,465	3,695
June deadline applicants per 10,000 population	221.5	201.3	230.3	243.4	298.1	300.1
Placed June deadline applicants per 10,000	28.8	25.7	30.3	34.7	41.3	43.8
All placed applicants per 10,000 population	31.3	30.4	32.8	37.7	45.2	49.3

## P.2 18 year old applications

Statistic	2011	2012	2013	2014	2015	2016
June deadline applications	18,305	16,575	18,360	19,225	23,845	23,490
Offers	13,935	12,135	14,890	15,990	19,810	20,320
Offer rate	76.1%	73.2%	81.1%	83.2%	83.1%	86.5%

### P.3 18 year old applicants by sex

Statistic	Sex	2011	2012	2013	2014	2015	2016
June deadline applicants	Men	7,815	6,960	7,890	7,590	9,600	9,260
	Women	9,240	8,615	9,630	10,740	13,240	13,230
Placed June deadline applicants	Men	945	860	1,060	1,020	1,275	1,360
	Women	1,275	1,130	1,250	1,595	1,885	1,920
All placed applicants	Men	1,020	1,005	1,135	1,110	1,395	1,545
	Women	1,390	1,350	1,365	1,730	2,070	2,150
June deadline applicants per 10,000 population	Men	198.6	175.5	202.1	196.0	244.6	241.1
	Women	245.4	228.5	259.9	293.4	354.3	362.1
Placed June deadline applicants per 10,000 population	Men	24.1	21.7	27.1	26.3	32.5	35.4
	Women	33.8	29.9	33.7	43.5	50.5	52.6
All placed applicants per 10,000 population	Men	25.9	25.4	29.0	28.6	35.5	40.2
	Women	36.9	35.8	36.8	47.3	55.4	58.9

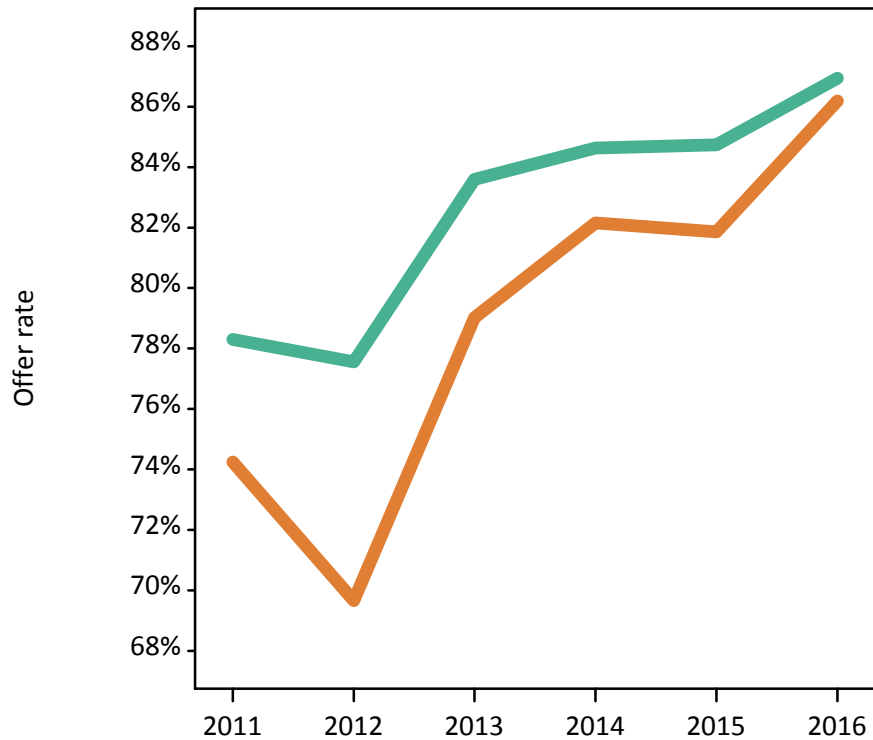
### P.4 18 year old applications by sex

Statistic	Sex	2011	2012	2013	2014	2015	2016
June deadline applications	Men	8,445	7,460	8,360	8,040	10,105	9,770
	Women	9,860	9,115	10,000	11,185	13,740	13,720
Offers	Men	6,610	5,785	6,990	6,805	8,560	8,495
	Women	7,320	6,350	7,905	9,185	11,250	11,825
Offer rate	Men	78.3%	77.6%	83.6%	84.6%	84.7%	86.9%
	Women	74.2%	69.7%	79.0%	82.2%	81.9%	86.2%
Average offer rate	Men	79.3%	78.3%	84.3%	85.5%	85.2%	87.6%
	Women	73.4%	69.1%	78.5%	81.5%	81.6%	85.7%
Percentage point difference between offer rate and average offer rate	Men	-1.0	-0.7	-0.7	-0.8	-0.4	-0.6
	Women	0.9	0.6	0.6	0.6	0.3	0.5
Contribution of group to the average offer rate	Men	0.587	0.589	0.584	0.552	0.544	0.554
	Women	0.647	0.663	0.652	0.678	0.665	0.682

### P.5 18 year old offer rate by sex

Note: The line for a group is not plotted when that group made fewer than 10 applications in any of the years from 2011-2016.

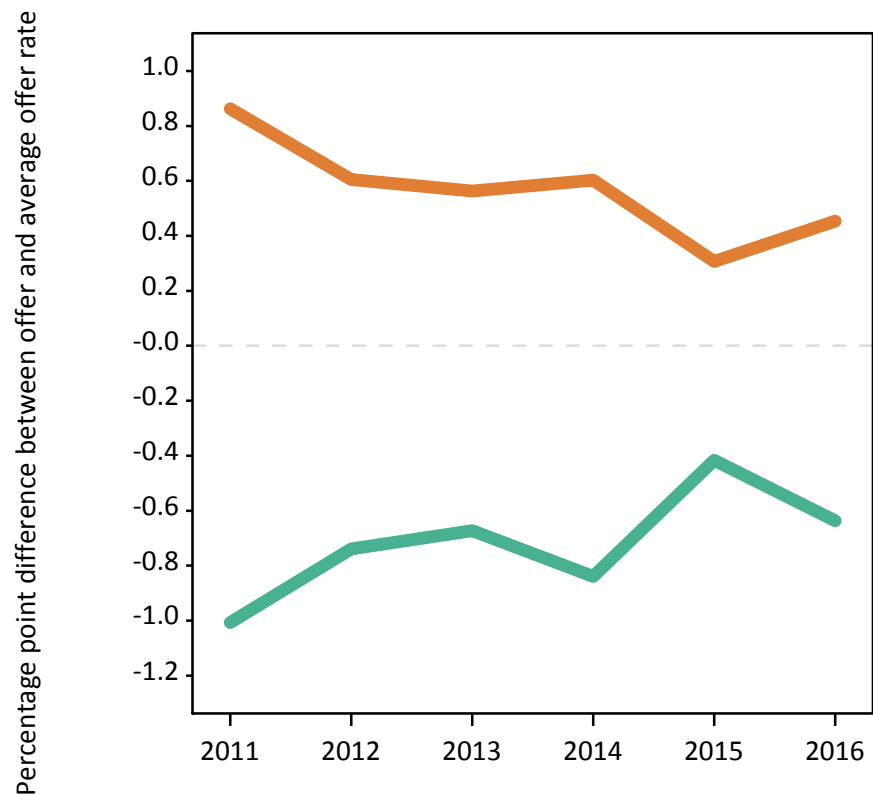
Men  
Women



### P.6 Percentage point difference between 18 year old offer rate and average offer rate by sex

Note: The line for a group is not plotted when that group made fewer than 50 applications in any of the years from 2011-2016.

Men  
Women



## P.7 18 year old applicants by POLAR3 quintile

Statistic	POLAR3 quintile	2011	2012	2013	2014	2015	2016
June deadline applicants	Quintile 1	1,470	1,360	1,550	1,730	2,170	2,200
	Quintile 2	2,175	2,055	2,435	2,480	3,180	3,085
	Quintile 3	2,860	2,615	2,990	3,195	3,930	3,955
	Quintile 4	4,205	3,860	4,280	4,385	5,495	5,350
	Quintile 5	6,315	5,660	6,250	6,520	8,020	7,810
Placed June deadline applicants	Quintile 1	195	175	205	255	275	320
	Quintile 2	285	265	350	360	450	455
	Quintile 3	360	310	355	460	530	565
	Quintile 4	555	510	610	640	820	780
	Quintile 5	820	725	790	895	1,080	1,150
All placed applicants	Quintile 1	205	200	215	275	310	345
	Quintile 2	300	310	380	390	480	495
	Quintile 3	390	360	390	495	585	625
	Quintile 4	600	605	655	695	895	890
	Quintile 5	905	875	860	980	1,195	1,325
June deadline applicants per 10,000 population	Quintile 1	102.3	95.3	111.1	124.3	155.0	162.9
	Quintile 2	144.7	137.1	165.3	169.4	214.2	213.3
	Quintile 3	185.8	169.4	196.0	212.3	256.1	263.2
	Quintile 4	268.4	243.2	273.7	284.5	351.0	346.5
	Quintile 5	381.5	336.8	377.9	399.7	479.2	472.6
Placed June deadline applicants per 10,000 population	Quintile 1	13.6	12.4	14.6	18.4	19.7	23.6
	Quintile 2	18.9	17.6	23.9	24.7	30.3	31.5
	Quintile 3	23.5	20.1	23.2	30.6	34.6	37.5
	Quintile 4	35.6	32.1	39.1	41.6	52.5	50.5
	Quintile 5	49.5	43.1	47.7	54.9	64.5	69.6
All placed applicants per 10,000 population	Quintile 1	14.3	14.2	15.4	19.8	22.1	25.6
	Quintile 2	20.1	20.7	25.8	26.6	32.3	34.4
	Quintile 3	25.4	23.2	25.5	33.0	38.0	41.6
	Quintile 4	38.4	38.3	41.9	45.1	57.2	57.7
	Quintile 5	54.6	52.0	51.9	60.2	71.4	80.1

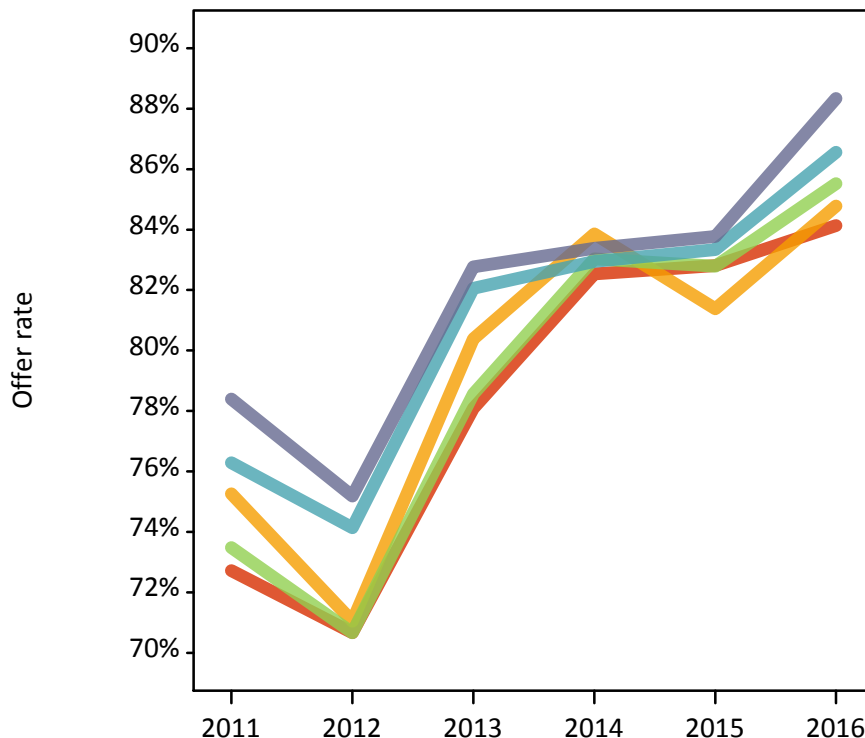
## P.8 18 year old applications by POLAR3 quintile

Statistic	POLAR3 quintile	2011	2012	2013	2014	2015	2016
June deadline applications	Quintile 1	1,635	1,475	1,695	1,845	2,325	2,345
	Quintile 2	2,355	2,240	2,575	2,620	3,355	3,260
	Quintile 3	3,070	2,770	3,095	3,330	4,095	4,110
	Quintile 4	4,535	4,100	4,495	4,635	5,735	5,570
	Quintile 5	6,675	5,960	6,490	6,770	8,285	8,115
Offers	Quintile 1	1,190	1,045	1,320	1,520	1,925	1,970
	Quintile 2	1,775	1,590	2,070	2,195	2,730	2,760
	Quintile 3	2,255	1,960	2,430	2,765	3,390	3,515
	Quintile 4	3,460	3,040	3,685	3,845	4,780	4,820
	Quintile 5	5,230	4,480	5,370	5,645	6,940	7,170
Offer rate	Quintile 1	72.7%	70.7%	78.1%	82.5%	82.8%	84.1%
	Quintile 2	75.3%	71.0%	80.4%	83.9%	81.4%	84.8%
	Quintile 3	73.5%	70.7%	78.6%	83.0%	82.8%	85.5%
	Quintile 4	76.3%	74.1%	82.1%	82.9%	83.3%	86.6%
	Quintile 5	78.4%	75.2%	82.8%	83.4%	83.8%	88.3%
Average offer rate	Quintile 1	74.7%	72.7%	80.3%	83.4%	83.2%	85.4%
	Quintile 2	74.7%	71.9%	81.2%	83.1%	81.8%	85.6%
	Quintile 3	74.4%	71.4%	79.4%	83.4%	83.1%	85.8%
	Quintile 4	76.0%	74.0%	81.4%	83.1%	83.0%	86.3%
	Quintile 5	77.9%	74.1%	81.9%	83.2%	83.6%	87.7%
Percentage point difference between offer rate and average offer rate	Quintile 1	-1.9	-2.1	-2.2	-0.8	-0.4	-1.3
	Quintile 2	0.6	-0.9	-0.8	0.7	-0.4	-0.8
	Quintile 3	-0.9	-0.7	-0.9	-0.3	-0.3	-0.3
	Quintile 4	0.3	0.2	0.7	-0.1	0.4	0.2
	Quintile 5	0.5	1.1	0.8	0.2	0.2	0.7
Contribution of group to the average offer rate	Quintile 1	0.166	0.178	0.173	0.166	0.166	0.166
	Quintile 2	0.193	0.203	0.205	0.193	0.191	0.189
	Quintile 3	0.222	0.219	0.218	0.223	0.211	0.215
	Quintile 4	0.294	0.296	0.285	0.285	0.277	0.274
	Quintile 5	0.420	0.416	0.404	0.401	0.396	0.393

### P.9 18 year old offer rate by POLAR3 quintile

Note: The line for a group is not plotted when that group made fewer than 10 applications in any of the years from 2011-2016.

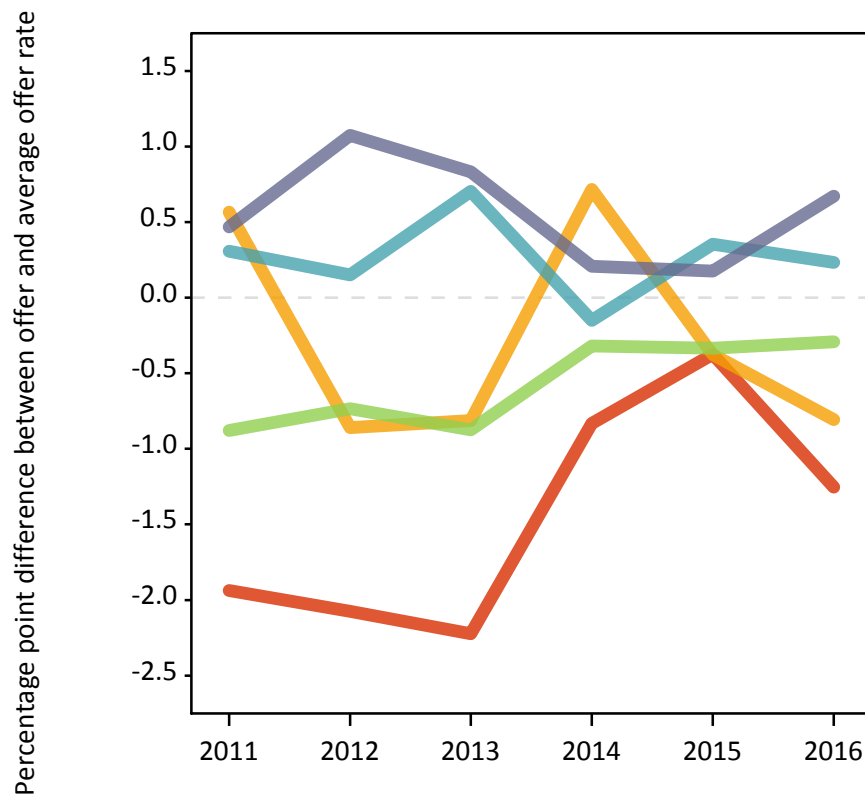
- Quintile 1
- Quintile 2
- Quintile 3
- Quintile 4
- Quintile 5



### P.10 Percentage point difference between 18 year old offer rate and average offer rate by POLAR3 quintile

Note: The line for a group is not plotted when that group made fewer than 50 applications in any of the years from 2011-2016.

- Quintile 1
- Quintile 2
- Quintile 3
- Quintile 4
- Quintile 5



## P.11 18 year old applicants by ethnic group

Statistic	Ethnic group	2011	2012	2013	2014	2015	2016
June deadline applicants	Asian	1,520	1,490	1,705	1,640	2,235	2,065
	Black	305	325	575	640	830	755
	Mixed	515	485	595	610	955	905
	White	14,485	13,060	14,435	15,210	18,480	18,415
	Other	150	150	150	180	225	215
Placed June deadline applicants	Asian	115	110	155	155	180	215
	Black	30	25	45	65	65	75
	Mixed	50	55	80	75	125	120
	White	1,995	1,780	2,000	2,300	2,770	2,830
	Other	15	15	20	15	15	25
All placed applicants	Asian	130	135	180	180	210	240
	Black	35	40	50	75	80	85
	Mixed	55	70	90	75	130	140
	White	2,160	2,080	2,150	2,485	3,010	3,185
	Other	15	15	25	20	20	30
June deadline applicants per 10,000 population	Asian	241.2	229.9	258.4	241.8	315.6	287.2
	Black	112.3	114.7	193.0	211.1	261.1	241.0
	Mixed	213.5	186.6	220.4	211.3	310.0	288.3
	White	223.7	202.3	229.4	246.5	296.6	304.5
	Other	185.2	169.5	166.5	194.5	235.5	218.6
Placed June deadline applicants per 10,000 population	Asian	18.2	17.0	23.5	23.0	25.4	29.7
	Black	11.0	9.6	15.2	21.4	19.8	24.0
	Mixed	21.5	20.3	30.0	25.4	40.2	38.1
	White	30.8	27.6	31.8	37.2	44.4	46.8
	Other	21.0	17.0	23.2	18.3	15.6	26.2
All placed applicants per 10,000 population	Asian	20.6	21.2	27.1	26.2	29.4	33.6
	Black	12.4	14.9	16.2	24.1	25.8	26.8
	Mixed	23.1	27.6	32.9	26.8	42.8	44.5
	White	33.4	32.2	34.2	40.3	48.3	52.6
	Other	21.0	19.2	25.4	22.6	19.7	30.2



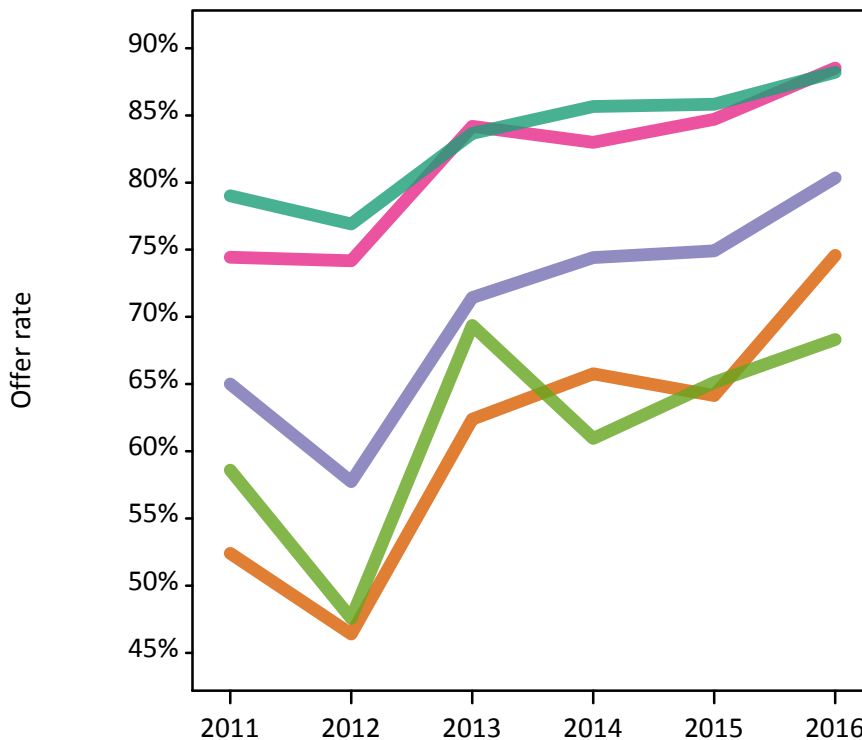
## P.12 18 year old applications by ethnic group

Statistic	Ethnic group	2011	2012	2013	2014	2015	2016
June deadline applications	Asian	1,600	1,580	1,750	1,685	2,285	2,110
	Black	320	335	580	650	845	765
	Mixed	540	510	615	625	985	930
	White	15,605	13,920	15,190	16,030	19,375	19,330
	Other	155	165	160	185	240	220
Offers	Asian	840	735	1,090	1,110	1,465	1,575
	Black	210	195	415	485	635	615
	Mixed	400	380	515	515	835	825
	White	12,330	10,705	12,710	13,730	16,630	17,050
	Other	90	80	110	115	155	150
Offer rate	Asian	52.4%	46.4%	62.4%	65.8%	64.1%	74.6%
	Black	65.0%	57.7%	71.4%	74.4%	74.9%	80.3%
	Mixed	74.4%	74.2%	84.2%	83.0%	84.7%	88.5%
	White	79.0%	76.9%	83.7%	85.7%	85.8%	88.2%
	Other	58.6%	47.6%	69.4%	61.0%	65.1%	68.3%
Average offer rate	Asian	55.4%	49.9%	63.9%	68.5%	66.3%	75.9%
	Black	64.9%	62.0%	77.0%	77.9%	76.8%	82.3%
	Mixed	76.1%	75.0%	83.1%	84.5%	84.7%	87.8%
	White	78.6%	76.3%	83.3%	85.1%	85.5%	88.0%
	Other	58.9%	51.6%	68.2%	66.4%	65.7%	72.1%
Percentage point difference between offer rate and average offer rate	Asian	-2.9	-3.5	-1.6	-2.7	-2.1	-1.3
	Black	0.1	-4.3	-5.5	-3.4	-1.9	-2.0
	Mixed	-1.7	-0.8	1.1	-1.5	-0.0	0.8
	White	0.4	0.6	0.3	0.5	0.3	0.3
	Other	-0.3	-4.1	1.2	-5.5	-0.6	-3.8
Contribution of group to the average offer rate	Asian	0.251	0.260	0.248	0.208	0.220	0.205
	Black	0.118	0.117	0.115	0.122	0.092	0.110
	Mixed	0.094	0.094	0.095	0.088	0.081	0.085
	White	0.878	0.869	0.857	0.858	0.837	0.846
	Other	0.062	0.079	0.085	0.069	0.077	0.060

**P.13 18 year old offer rate by ethnic group**

Note: The line for a group is not plotted when that group made fewer than 10 applications in any of the years from 2011-2016.

- Asian
- Black
- Mixed
- White
- Other



**P.14 Percentage point difference between 18 year old offer rate and average offer rate by ethnic group**

Note: The line for a group is not plotted when that group made fewer than 50 applications in any of the years from 2011-2016.

- Asian
- Black
- Mixed
- White
- Other



### P.15 Applicants (all ages)

Statistic	2011	2012	2013	2014	2015	2016
June deadline applicants	26,790	23,830	26,720	27,495	33,295	32,365
Placed June deadline applicants	3,610	3,025	3,525	3,930	4,565	4,735
All placed applicants	3,875	3,530	3,800	4,300	5,030	5,360

### P.16 Applications (all ages)

Statistic	2011	2012	2013	2014	2015	2016
June deadline applications	29,195	25,785	28,425	29,290	35,155	34,235
Offers	19,185	16,180	20,150	21,365	26,155	26,745
Offer rate	65.7%	62.7%	70.9%	72.9%	74.4%	78.1%

### P.17 Applicants (all ages) by sex

Statistic	Sex	2011	2012	2013	2014	2015	2016
June deadline applicants	Men	12,540	10,895	12,395	11,945	14,575	13,970
	Women	14,255	12,940	14,325	15,550	18,720	18,390
Placed June deadline applicants	Men	1,655	1,365	1,655	1,665	1,945	2,035
	Women	1,955	1,655	1,870	2,265	2,615	2,700
All placed applicants	Men	1,765	1,590	1,770	1,815	2,150	2,330
	Women	2,110	1,940	2,030	2,485	2,880	3,030

### P.18 Applications (all ages) by sex

Statistic	Sex	2011	2012	2013	2014	2015	2016
June deadline applications	Men	13,805	11,890	13,330	12,900	15,515	14,910
	Women	15,390	13,900	15,095	16,390	19,640	19,325
Offers	Men	9,450	7,990	9,820	9,605	11,825	11,615
	Women	9,735	8,190	10,335	11,760	14,330	15,125
Offer rate	Men	68.5%	67.2%	73.7%	74.5%	76.2%	77.9%
	Women	63.2%	58.9%	68.5%	71.7%	73.0%	78.3%

### P.19 Applicants (all ages) by POLAR3 quintile

Statistic	POLAR3 quintile	2011	2012	2013	2014	2015	2016
June deadline applicants	Quintile 1	2,735	2,550	2,835	3,065	3,605	3,565
	Quintile 2	3,745	3,370	3,855	3,975	4,820	4,705
	Quintile 3	4,520	4,060	4,655	4,840	5,785	5,780
	Quintile 4	6,440	5,690	6,355	6,415	7,810	7,480
	Quintile 5	9,275	8,110	8,970	9,165	11,215	10,685
Placed June deadline applicants	Quintile 1	345	335	365	440	445	475
	Quintile 2	470	420	520	570	655	695
	Quintile 3	580	480	555	690	775	830
	Quintile 4	895	750	905	930	1,150	1,095
	Quintile 5	1,305	1,035	1,180	1,295	1,525	1,625
All placed applicants	Quintile 1	360	375	390	480	495	525
	Quintile 2	500	480	565	615	710	770
	Quintile 3	625	555	595	750	860	930
	Quintile 4	955	880	970	1,020	1,260	1,250
	Quintile 5	1,425	1,230	1,275	1,435	1,695	1,860

### P.20 Applications (all ages) by POLAR3 quintile

Statistic	POLAR3 quintile	2011	2012	2013	2014	2015	2016
June deadline applications	Quintile 1	3,085	2,850	3,165	3,380	3,945	3,910
	Quintile 2	4,140	3,725	4,180	4,315	5,140	5,040
	Quintile 3	4,900	4,375	4,890	5,120	6,105	6,050
	Quintile 4	7,025	6,145	6,720	6,830	8,230	7,850
	Quintile 5	9,960	8,640	9,420	9,605	11,665	11,230
Offers	Quintile 1	1,770	1,600	2,020	2,275	2,705	2,785
	Quintile 2	2,570	2,190	2,870	3,045	3,705	3,755
	Quintile 3	3,065	2,595	3,315	3,700	4,470	4,645
	Quintile 4	4,715	3,990	4,880	5,025	6,220	6,220
	Quintile 5	7,015	5,770	7,035	7,285	9,010	9,225
Offer rate	Quintile 1	57.3%	56.1%	63.8%	67.3%	68.6%	71.3%
	Quintile 2	62.1%	58.8%	68.6%	70.6%	72.0%	74.5%
	Quintile 3	62.5%	59.3%	67.8%	72.3%	73.2%	76.8%
	Quintile 4	67.2%	64.9%	72.6%	73.6%	75.6%	79.2%
	Quintile 5	70.5%	66.8%	74.7%	75.9%	77.2%	82.1%

## P.21 Applicants (all ages) by ethnic group

Statistic	Ethnic group	2011	2012	2013	2014	2015	2016
June deadline applicants	Asian	2,825	2,795	3,010	2,830	3,595	3,335
	Black	930	935	1,130	1,265	1,535	1,375
	Mixed	855	795	960	955	1,425	1,350
	White	21,675	18,800	21,085	21,920	26,050	25,625
	Other	325	350	360	385	445	425
Placed June deadline applicants	Asian	225	220	270	255	280	335
	Black	70	60	80	115	105	120
	Mixed	105	90	130	125	180	180
	White	3,150	2,615	2,990	3,380	3,940	4,015
	Other	35	30	45	35	35	50
All placed applicants	Asian	245	265	305	300	330	410
	Black	80	85	85	125	130	135
	Mixed	110	115	140	135	200	210
	White	3,380	3,010	3,205	3,675	4,295	4,510
	Other	35	35	45	45	40	55

## P.22 Applications (all ages) by ethnic group

Statistic	Ethnic group	2011	2012	2013	2014	2015	2016
June deadline applications	Asian	3,035	3,015	3,105	2,935	3,700	3,420
	Black	990	995	1,175	1,315	1,575	1,405
	Mixed	925	855	1,020	995	1,495	1,410
	White	23,680	20,365	22,565	23,475	27,645	27,285
	Other	355	390	380	420	475	445
Offers	Asian	1,275	1,165	1,620	1,640	2,110	2,265
	Black	380	355	635	745	940	915
	Mixed	590	540	745	735	1,140	1,135
	White	16,680	13,885	16,860	17,950	21,545	21,995
	Other	155	145	200	200	255	260
Offer rate	Asian	42.1%	38.6%	52.1%	55.9%	57.1%	66.2%
	Black	38.3%	36.0%	54.0%	56.7%	59.7%	65.0%
	Mixed	63.9%	63.3%	72.9%	73.9%	76.1%	80.4%
	White	70.4%	68.2%	74.7%	76.5%	77.9%	80.6%
	Other	43.9%	37.6%	53.3%	48.0%	53.9%	57.9%

## Technical Notes and Definitions

### UCAS undergraduate scheme

#### Adjustment

Adjustment allows applicants who have met and exceeded the terms of their conditional firm offer to seek and find a place at another provider whilst keeping their place at their original firm choice provider.

#### Clearing

Clearing is a route for applicants that are not placed and holding no offers to find a place on courses with vacancies.

#### Cycle year

The UCAS application cycle which runs from September to October the following year. For example the 2016 cycle runs from September 2015 through to October 2016.

#### End of cycle

The point in the cycle to which the numbers in this report refer, and the point at which the cycle is closed such that no more applications or offers can be made, and no more applicants can be placed. Numbers reported at the end of cycle exclude information on a small number of applicants who cancelled during the cycle.

#### Extra

Applicants who are unsuccessful in obtaining an offer or decline all offers may be eligible to apply through Extra, where they can apply to one further course at a time. Extra operates from 25 February until early July. It provides applicants who are eligible the possibility of obtaining an offer before exam results are published and Clearing starts.

#### June 30 deadline

The deadline for main scheme applications. Applicants who apply after this date will go directly into Clearing.

#### Record of Prior Acceptance (RPA)

RPA is an acceptance route used when a provider informs UCAS of applicants it has accepted outside of the normal application process (e.g. individuals who have applied directly to the provider).

### Reporting groups

#### Ethnic group

High level grouping of ethnic origin as declared by the applicant: 'White', 'Black', 'Asian', 'Mixed', 'Other', 'Unknown'. Applicants who declare themselves as 'Unknown' ethnic origin are not reported in these tables, but are included in the associated csv data file.

#### POLAR3 quintile

Developed by HEFCE, POLAR3 classifies small areas across the UK into five groups according to their level of young participation in Higher Education. Each of these groups represents around 20 per cent of young people and is ranked from Quintile 1 (areas with the lowest young participation rates, considered as the most disadvantaged) to Quintile 5 (highest young participation rates, considered most advantaged). POLAR3 is based on the participation rates of young people between 2005 and 2009 who entered Higher Education between 2005-06 and 2010-11, therefore is most suitable for applicants aged 19 and under. These groups are assigned using the postcode declared by the applicant at the time of their application. If a UK postcode is invalid, considered unsafe for measurement or there is no link to Census geography possible then the applicant is not assigned to a quintile. Applicants with no POLAR3 quintile are not reported.

#### Sex

Sex as declared by the applicant.

### **SIMD quintile**

Scottish index of multiple deprivation (SIMD) for 2012 identifies small area concentrations of multiple deprivation across all of Scotland, providing a relative measure of deprivation amongst 6505 small areas (data zones) based on 7 socio-economic domains. These small areas are classified into five groups ranked from Quintile 1 (considered the most deprived) to Quintile 5 (considered least deprived), with equal populations in each quintile. Quintiles are assigned using the postcode declared by the applicant, applicants declaring invalid postcodes are classified as 'Not assigned' and are not reported.

SIMD is only defined for applicants domiciled in Scotland, therefore any applicants domiciled outside of Scotland cannot be assigned to an SIMD quintile and so are not reported for this measure.

SIMD is only reported for providers in Scotland. Application and entry rates by SIMD are reported in the 2016 End of Cycle Report and the 2016 cycle January deadline application rate report.

### **Statistics reported in the tables**

#### **All placed applicants**

The number of applicants placed for entry into higher education at the provider through one of their choices, including any choices made through Extra, or via Adjustment, Clearing or RPA.

#### **All placed applicants per 10,000 population**

The number of total UK domiciled 18 year old placed applicants for entry into higher education at the provider divided by the number of UK 18 year olds in the population, multiplied by 10,000. This gives the number of 18 year olds, for every 10,000 in the population, that were placed at the provider through one of their choices, including any choices made through Extra, or via Adjustment, Clearing or RPA. It is an alternative way of expressing the entry rate to a provider. By referencing the underlying population this statistic shows how the number of placed applicants is changing in relation to the available pool of potential applicants and so gives the chance that somebody from the group will be placed at a provider.

This statistic is only reported for 18 year olds.

#### **Average offer rate**

The offer rate that you might expect if the predicted grades and subject choice of applicants were the only factors that influenced whether an applicant was made an offer by the provider. The average offer rate is calculated by dividing applicants according to their specific combination of grades (for A levels the best three predicted grades are used, for BTECs, International Baccalaureate and Scottish Highers and Advanced Highers, predicted grades along with any grades already achieved upon applying are used) and subject choice. For each combination the number of main scheme offers is divided by the number of main scheme applications, to give an overall offer rate. This is then multiplied by the number of applications made by the group for which the average offer rate is being calculated (for example POLAR3 quintile 1), to give an average number of offers for that group. These average number of offers are then added together across all combinations of predicted grade and subject and divided by the number of main scheme applications from the group to give the average offer rate.

The average offer rate does not attempt to control for any other factors that may play a part in the decision to make an offer, such as the subject of the qualifications studied, their relevance to a course, or the grade in each subject; higher numbers of A levels being studied; the exact profile of grades predicted; personal statements; teacher references; interviews; or any other criteria (such as work experience or portfolios) that may be part of the admissions decision.

This statistic is only reported for 18 year olds.



### Contribution of group to the average offer rate

The way in which the average offer rate is defined means that the pattern of application and offers of a group (for example POLAR3 quintile 1) will always contribute, in part, to the average offer rate for that group. When this contribution is large, the average offer rate will mainly reflect the patterns for the group, meaning that the value of the average offer rate will be similar to the offer rate, the percentage point difference statistic will be small, and any real difference between the offer rate and what might be expected given the predicted grades and subject choices of the applicants will be difficult to detect.

Values of the contribution of group to the average offer rate range between 0 and 1. The closer the value is to 1 the greater the contribution a group makes to its own average offer rate.

This statistic is only reported for 18 year olds.

### Placed June deadline applicants

An applicant who has been placed for entry into higher education at the provider through a June deadline application.

### Placed June deadline applicants per 10,000 population

The number of UK domiciled 18 year old placed June deadline applicants at the provider divided by the number of UK 18 year olds in the population, multiplied by 10,000. This gives the number of 18 year olds, for every 10,000 in the population, that were placed at the provider through one of their June deadline applications. It is an alternative way of expressing the entry rate to a provider, but for placed June deadline applicants only. By referencing the underlying population this statistic shows how the number of placed June deadline applicants is changing in relation to the available pool of potential 18 year old applicants and so gives the chance that somebody from the group will be placed at a provider through a June deadline application.

This statistic is only reported for 18 year olds.

### June deadline applications

An application (or choice) to a course in higher education to the provider that is made by the June 30 deadline. Each applicant can make up to five choices this way. The number of June deadline applications does not include choices made through the following routes: Clearing, Extra, Adjustment and RPAs. Applications made to October deadline courses received after the October deadline are not included in these statistics.

### June deadline applicants

The number of applicants that made at least one application to the provider by the June 30 deadline.

### June deadline applicants per 10,000 population

The number of UK domiciled 18 year old June deadline applicants to the provider divided by the number of UK 18 year olds in the population, multiplied by 10,000. This gives the number of 18 year olds, for every 10,000 in the population, who applied by the June 30 deadline. It is equivalent to the application rate. By referencing the underlying population this statistic shows how the number of June deadline applicants is changing in relation to the available pool of potential 18 year old applicants and so gives the chance that somebody from the group will apply to a provider by the June 30 deadline.

This statistic is only reported for 18 year olds.

### Offers

An offer is defined as a provider's decision in response to an application to offer a place to an applicant, often subject to the applicant satisfying academic and/or other criteria, via a June deadline application (i.e. does not cover choices made through the following routes: Clearing, Extra, Adjustment and RPAs).

### Offer rate

The number of offers made divided by the number of June deadline applications. This gives the proportion of all June deadline applications to the provider that received an offer.

### Percentage point difference between offer rate and average offer rate

The offer rate minus the average offer rate.

The percentage point difference can be compared to the expected range of statistical variation resulting from the calculation of the average offer rate using the Average Offer Rate Lookup Table. Where the value of the percentage point difference lies outside of this range, the percentage point difference may be considered to represent a real difference between the offer rate and the average offer rate.

### Other definitions

#### Age

This analysis uses country-specific age definitions that align with the cut off points for school and college cohorts within the different administrations of the UK. For England and Wales, ages are defined on the 31 August, for Northern Ireland on the 1 July and for Scotland on the 28 February the following year. Defining ages in this way matches the assignment of children to school cohorts. For applicants outside of the UK a cohort cut off of 31 August has been used.

#### Provider

A higher education provider - a university or college.

#### UK domiciled

Declared area of permanent residence within England, Northern Ireland, Scotland and Wales. Applicants from the Channel Islands and Isle of Man are not included.