

K24 The University of Kent

Cycle years: 2011 - 2016

Cycle Reference Point: End of Cycle

Applicant coverage: UK domiciled

Reporting groups: Sex, POLAR3, ethnic group

Applicant statistics: June deadline applicants, placed June deadline applicants, all placed applicants, June deadline applicants per 10,000 population, placed June deadline applicants per 10,000 population, all placed applicants per 10,000 population

Application statistics: June deadline applications, offers, offer rate, average offer rate, percentage point difference between offer rate and average offer rate, contribution of group to the average offer rate

Non-disclosure controls: To avoid the disclosure of information about any individual the following measures are taken

- Applicants, placed applicants, applications and offers are rounded to the nearest 5.
- Applicants/placed applicants per 10,000 population figures are reported as 0 if the applicant/placed applicant figures are rounded to 0.
- All statistics related to the offer rate are not reported when the number of applications for a group is less than 10. The percentage point difference between the offer rate and the average offer rate is not reported when the number of applications for a group is less than 50.
- Offer rates are reported as 0% if there are fewer than 5 offers, and 100% if the number of offers is within 5 of the number of applications. When the offer rate is reported as 0% or 100%, it is reported in italics.

Contents:

18 year old applicants:	P.1
18 year old applications:	P.2
18 year old applicants by sex:	P.3
18 year old applications by sex:	P.4
18 year old applicants by POLAR3 quintile:	P.7
18 year old applications by POLAR3 quintile:	P.8
18 year old applicants by ethnic group:	P.11
18 year old applications by ethnic group:	P.12
Applicants (all ages):	P.15
Applications (all ages):	P.16
Applicants (all ages) by sex:	P.17
Applications (all ages) by sex:	P.18
Applicants (all ages) by POLAR3 quintile:	P.19
Applications (all ages) by POLAR3 quintile:	P.20
Applicants (all ages) by ethnic group:	P.21
Applications (all ages) by ethnic group:	P.22

P.1 18 year old applicants

Statistic	2011	2012	2013	2014	2015	2016
June deadline applicants	12,605	12,340	13,385	12,480	13,660	14,705
Placed June deadline applicants	1,945	2,075	2,110	2,015	2,095	2,255
All placed applicants	2,515	2,470	2,515	2,635	2,630	2,725
June deadline applicants per 10,000 population	163.7	159.5	175.9	165.7	178.3	196.2
Placed June deadline applicants per 10,000	25.3	26.8	27.7	26.8	27.3	30.1
All placed applicants per 10,000 population	32.7	31.9	33.0	35.0	34.4	36.4

P.2 18 year old applications

Statistic	2011	2012	2013	2014	2015	2016
June deadline applications	13,110	12,795	13,790	12,930	14,115	15,225
Offers	11,170	10,860	12,355	11,240	12,310	13,455
Offer rate	85.2%	84.9%	89.6%	86.9%	87.2%	88.4%

P.3 18 year old applicants by sex

Statistic	Sex	2011	2012	2013	2014	2015	2016
June deadline applicants	Men	6,180	6,055	6,645	6,130	6,475	7,115
	Women	6,425	6,285	6,745	6,355	7,190	7,590
Placed June deadline applicants	Men	910	980	1,000	985	975	1,085
	Women	1,035	1,095	1,110	1,030	1,120	1,170
All placed applicants	Men	1,180	1,165	1,200	1,260	1,240	1,300
	Women	1,335	1,300	1,315	1,375	1,395	1,430
June deadline applicants per 10,000 population	Men	157.0	152.7	170.2	158.3	165.0	185.2
	Women	170.6	166.8	182.0	173.6	192.3	207.7
Placed June deadline applicants per 10,000 population	Men	23.1	24.7	25.6	25.4	24.8	28.3
	Women	27.5	29.1	30.0	28.2	29.9	32.0
All placed applicants per 10,000 population	Men	30.0	29.4	30.7	32.5	31.5	33.8
	Women	35.4	34.5	35.5	37.6	37.3	39.1

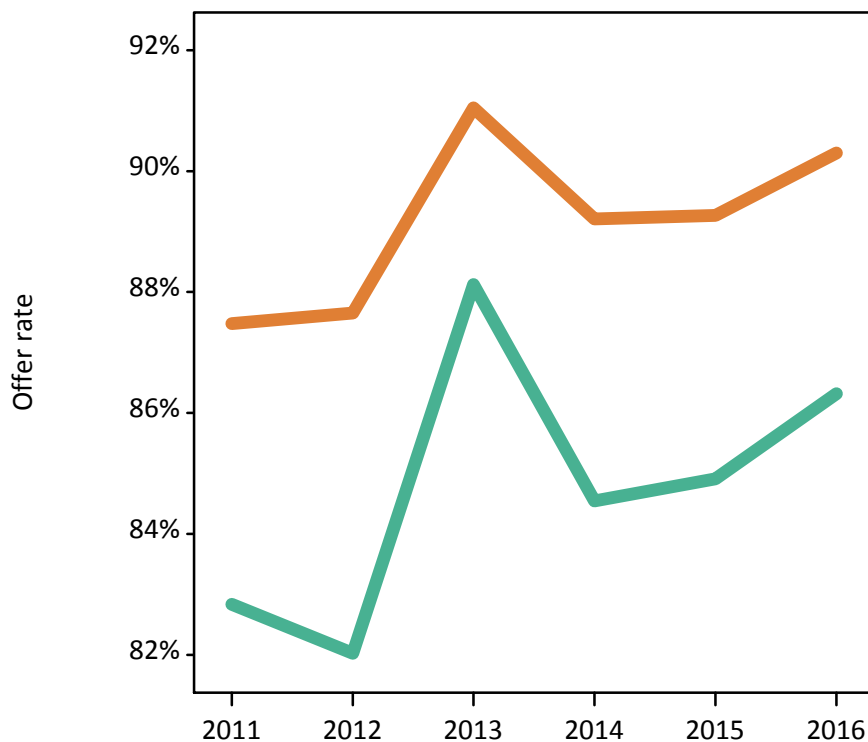
P.4 18 year old applications by sex

Statistic	Sex	2011	2012	2013	2014	2015	2016
June deadline applications	Men	6,445	6,310	6,855	6,380	6,705	7,370
	Women	6,670	6,490	6,935	6,550	7,410	7,855
Offers	Men	5,335	5,175	6,040	5,395	5,695	6,360
	Women	5,835	5,685	6,315	5,845	6,615	7,095
Offer rate	Men	82.8%	82.0%	88.1%	84.5%	84.9%	86.3%
	Women	87.5%	87.7%	91.0%	89.2%	89.3%	90.3%
Average offer rate	Men	83.3%	82.5%	88.5%	85.2%	85.3%	86.7%
	Women	87.0%	87.1%	90.6%	88.5%	88.9%	90.0%
Percentage point difference between offer rate and average offer rate	Men	-0.5	-0.5	-0.4	-0.7	-0.4	-0.3
	Women	0.4	0.5	0.4	0.7	0.4	0.3
Contribution of group to the average offer rate	Men	0.606	0.620	0.610	0.625	0.611	0.609
	Women	0.620	0.630	0.615	0.635	0.648	0.633

P.5 18 year old offer rate by sex

Note: The line for a group is not plotted when that group made fewer than 10 applications in any of the years from 2011-2016.

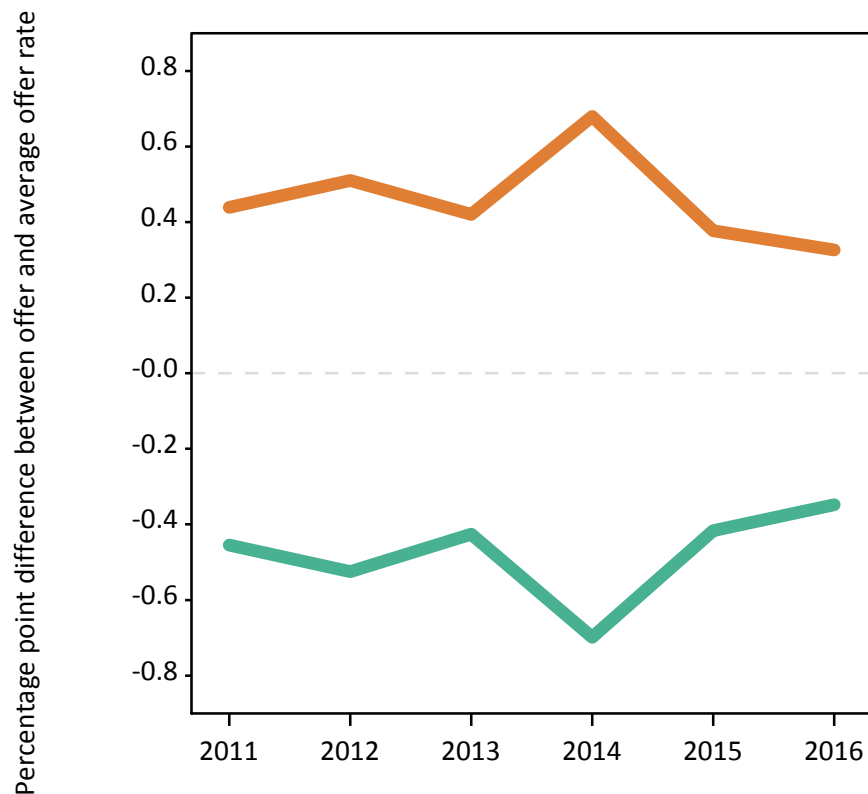
Men
Women



P.6 Percentage point difference between 18 year old offer rate and average offer rate by sex

Note: The line for a group is not plotted when that group made fewer than 50 applications in any of the years from 2011-2016.

Men
Women



P.7 18 year old applicants by POLAR3 quintile

Statistic	POLAR3 quintile	2011	2012	2013	2014	2015	2016
June deadline applicants	Quintile 1	1,030	935	995	1,000	1,125	1,270
	Quintile 2	1,765	1,720	1,910	1,850	2,025	2,120
	Quintile 3	2,565	2,570	2,795	2,710	3,025	3,155
	Quintile 4	3,105	3,180	3,495	3,115	3,460	3,645
	Quintile 5	4,115	3,895	4,170	3,785	4,000	4,460
Placed June deadline applicants	Quintile 1	180	175	180	185	155	225
	Quintile 2	305	305	365	355	345	375
	Quintile 3	400	465	475	460	490	500
	Quintile 4	485	555	545	500	525	550
	Quintile 5	570	580	545	515	575	590
All placed applicants	Quintile 1	215	200	205	225	210	255
	Quintile 2	365	365	415	430	420	430
	Quintile 3	515	535	570	615	605	625
	Quintile 4	625	655	660	640	640	655
	Quintile 5	795	705	660	725	745	750
June deadline applicants per 10,000 population	Quintile 1	71.8	65.6	71.4	71.7	80.4	93.9
	Quintile 2	117.5	114.6	129.6	126.5	136.3	146.5
	Quintile 3	166.6	166.6	183.2	180.1	196.9	209.9
	Quintile 4	198.4	200.5	223.6	202.3	221.1	236.0
	Quintile 5	248.5	232.0	252.2	232.2	239.0	270.1
Placed June deadline applicants per 10,000 population	Quintile 1	12.6	12.1	12.8	13.2	11.2	16.7
	Quintile 2	20.4	20.2	24.6	24.2	23.2	25.9
	Quintile 3	26.0	30.2	31.2	30.6	31.8	33.4
	Quintile 4	31.0	34.8	34.8	32.6	33.4	35.8
	Quintile 5	34.4	34.4	33.1	31.5	34.2	35.8
All placed applicants per 10,000 population	Quintile 1	14.9	14.1	14.8	16.2	15.1	18.8
	Quintile 2	24.3	24.4	28.2	29.3	28.2	29.8
	Quintile 3	33.3	34.8	37.3	40.7	39.5	41.6
	Quintile 4	39.8	41.3	42.3	41.7	41.0	42.6
	Quintile 5	48.0	42.1	40.0	44.4	44.6	45.3

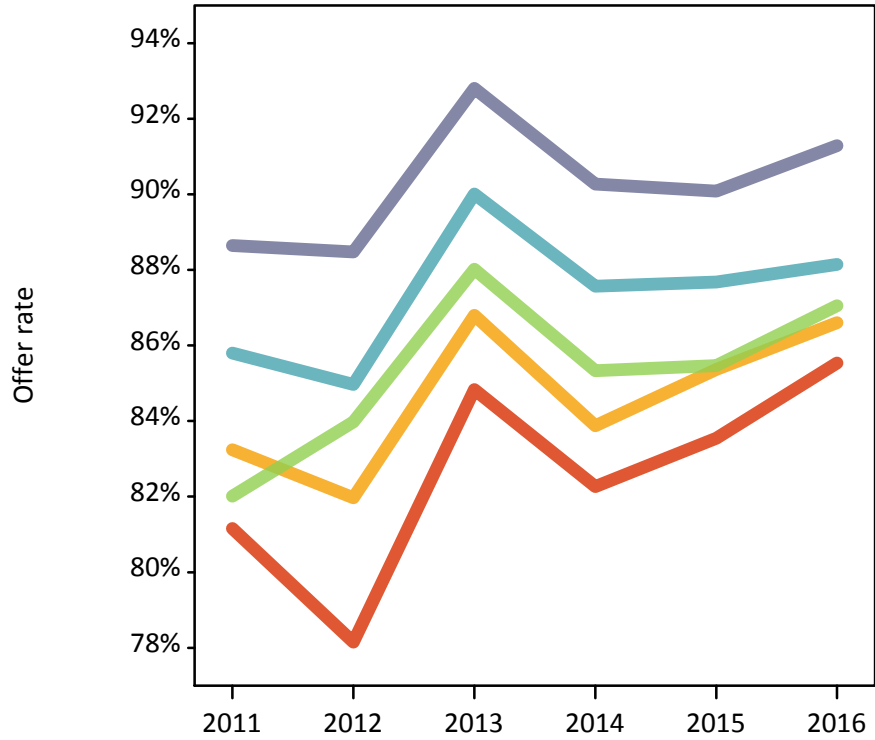
P.8 18 year old applications by POLAR3 quintile

Statistic	POLAR3 quintile	2011	2012	2013	2014	2015	2016
June deadline applications	Quintile 1	1,105	995	1,040	1,050	1,185	1,360
	Quintile 2	1,885	1,820	2,010	1,945	2,125	2,230
	Quintile 3	2,665	2,670	2,865	2,815	3,115	3,250
	Quintile 4	3,225	3,295	3,605	3,225	3,580	3,765
	Quintile 5	4,210	3,985	4,255	3,875	4,085	4,560
Offers	Quintile 1	895	775	885	865	990	1,165
	Quintile 2	1,570	1,490	1,745	1,635	1,815	1,935
	Quintile 3	2,185	2,245	2,520	2,405	2,665	2,830
	Quintile 4	2,765	2,800	3,245	2,825	3,140	3,315
	Quintile 5	3,735	3,525	3,945	3,500	3,680	4,160
Offer rate	Quintile 1	81.2%	78.1%	84.8%	82.3%	83.5%	85.5%
	Quintile 2	83.2%	82.0%	86.8%	83.9%	85.4%	86.6%
	Quintile 3	82.0%	84.0%	88.0%	85.3%	85.5%	87.1%
	Quintile 4	85.8%	85.0%	90.0%	87.6%	87.7%	88.1%
	Quintile 5	88.6%	88.5%	92.8%	90.3%	90.1%	91.3%
Average offer rate	Quintile 1	81.7%	80.3%	85.6%	83.2%	84.5%	84.9%
	Quintile 2	82.7%	81.3%	87.3%	83.7%	85.1%	86.1%
	Quintile 3	83.1%	83.6%	88.2%	85.7%	85.8%	87.3%
	Quintile 4	85.5%	85.5%	90.1%	87.5%	87.8%	89.0%
	Quintile 5	88.3%	88.0%	92.2%	89.9%	89.6%	90.9%
Percentage point difference between offer rate and average offer rate	Quintile 1	-0.6	-2.2	-0.7	-0.9	-0.9	0.6
	Quintile 2	0.5	0.7	-0.5	0.2	0.3	0.5
	Quintile 3	-1.1	0.4	-0.2	-0.4	-0.3	-0.2
	Quintile 4	0.3	-0.6	-0.1	0.1	-0.1	-0.8
	Quintile 5	0.3	0.4	0.6	0.4	0.4	0.4
Contribution of group to the average offer rate	Quintile 1	0.180	0.166	0.153	0.167	0.160	0.163
	Quintile 2	0.219	0.221	0.224	0.228	0.220	0.211
	Quintile 3	0.277	0.276	0.268	0.282	0.286	0.275
	Quintile 4	0.305	0.317	0.312	0.303	0.306	0.296
	Quintile 5	0.394	0.379	0.372	0.369	0.357	0.361

P.9 18 year old offer rate by POLAR3 quintile

Note: The line for a group is not plotted when that group made fewer than 10 applications in any of the years from 2011-2016.

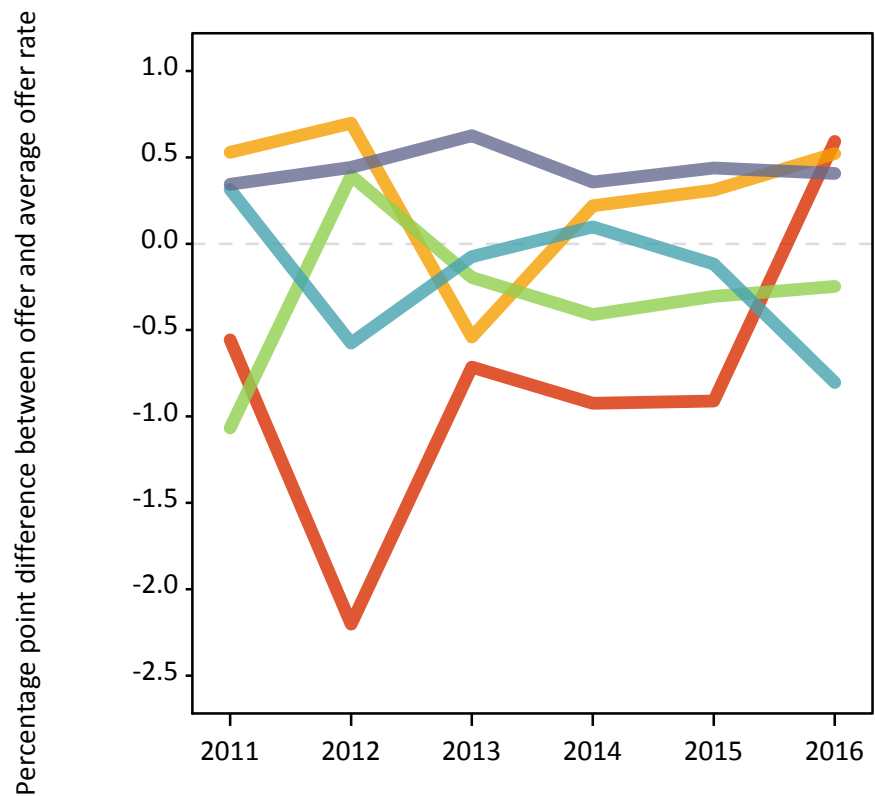
- Quintile 1
- Quintile 2
- Quintile 3
- Quintile 4
- Quintile 5



P.10 Percentage point difference between 18 year old offer rate and average offer rate by POLAR3 quintile

Note: The line for a group is not plotted when that group made fewer than 50 applications in any of the years from 2011-2016.

- Quintile 1
- Quintile 2
- Quintile 3
- Quintile 4
- Quintile 5



P.11 18 year old applicants by ethnic group

Statistic	Ethnic group	2011	2012	2013	2014	2015	2016
June deadline applicants	Asian	1,095	1,240	1,440	1,405	1,435	1,570
	Black	1,175	1,260	1,495	1,540	1,780	1,960
	Mixed	555	580	655	625	765	860
	White	9,535	8,995	9,505	8,630	9,320	9,870
	Other	165	190	225	225	275	315
Placed June deadline applicants	Asian	155	150	155	165	165	195
	Black	150	200	220	250	280	320
	Mixed	80	95	100	105	140	125
	White	1,530	1,605	1,595	1,465	1,465	1,560
	Other	20	20	30	30	30	40
All placed applicants	Asian	225	205	210	250	255	270
	Black	215	260	310	360	385	415
	Mixed	110	120	115	140	180	155
	White	1,920	1,840	1,800	1,815	1,755	1,805
	Other	25	20	40	50	40	55
June deadline applicants per 10,000 population	Asian	173.7	191.2	218.2	207.3	202.8	218.3
	Black	430.5	447.1	503.2	507.7	558.6	626.4
	Mixed	228.7	222.3	242.3	216.6	248.7	273.0
	White	147.3	139.3	151.1	139.9	149.6	163.2
	Other	204.9	214.7	248.1	243.9	285.3	318.3
Placed June deadline applicants per 10,000 population	Asian	24.3	22.9	23.2	24.0	23.6	27.0
	Black	54.1	70.7	74.1	81.8	88.6	102.9
	Mixed	33.9	35.7	37.4	35.8	44.8	40.1
	White	23.7	24.8	25.4	23.8	23.5	25.8
	Other	27.2	21.5	33.1	31.2	31.1	38.3
All placed applicants per 10,000 population	Asian	35.7	31.5	31.5	36.9	36.2	37.7
	Black	78.3	92.0	103.7	118.8	120.3	132.6
	Mixed	45.8	45.7	43.3	48.7	57.7	49.9
	White	29.7	28.5	28.6	29.4	28.1	29.8
	Other	32.1	23.7	46.3	53.7	41.5	53.4

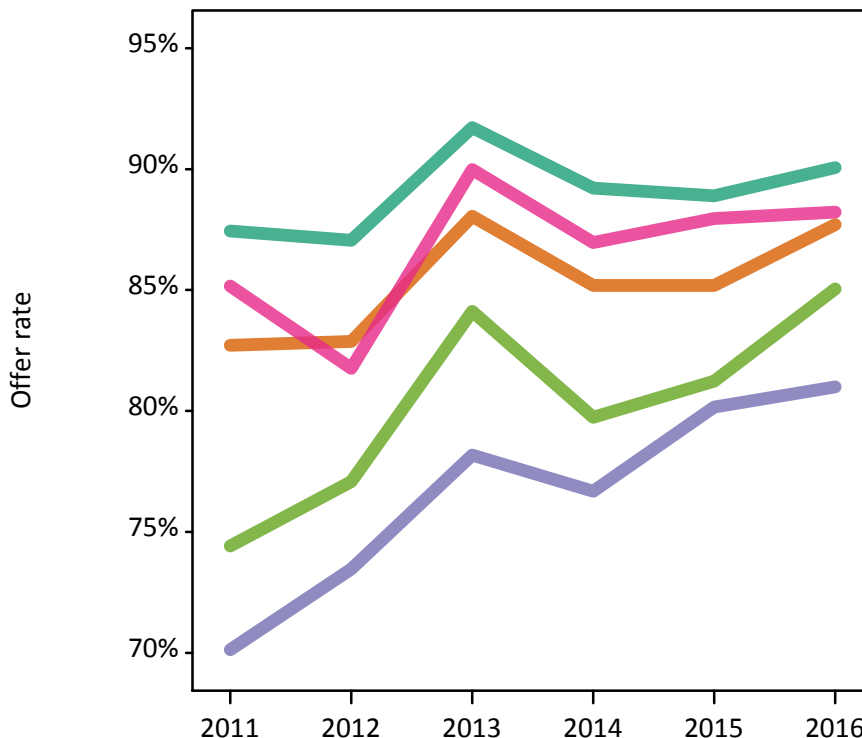
P.12 18 year old applications by ethnic group

Statistic	Ethnic group	2011	2012	2013	2014	2015	2016
June deadline applications	Asian	1,115	1,265	1,465	1,430	1,450	1,605
	Black	1,185	1,270	1,510	1,555	1,795	1,985
	Mixed	565	590	670	635	795	885
	White	9,995	9,395	9,840	9,015	9,705	10,305
	Other	170	190	235	230	275	320
Offers	Asian	925	1,050	1,290	1,220	1,235	1,405
	Black	830	935	1,180	1,195	1,440	1,605
	Mixed	480	485	600	555	700	780
	White	8,740	8,175	9,025	8,040	8,630	9,280
	Other	130	150	195	185	225	275
Offer rate	Asian	82.7%	82.9%	88.1%	85.2%	85.2%	87.7%
	Black	70.1%	73.5%	78.2%	76.7%	80.2%	81.0%
	Mixed	85.2%	81.8%	90.0%	87.0%	88.0%	88.2%
	White	87.4%	87.1%	91.7%	89.2%	88.9%	90.1%
	Other	74.4%	77.1%	84.1%	79.7%	81.2%	85.0%
Average offer rate	Asian	82.3%	84.4%	87.7%	84.9%	86.2%	87.8%
	Black	73.1%	76.4%	81.0%	79.0%	81.2%	82.6%
	Mixed	85.9%	83.3%	89.4%	86.6%	87.9%	87.8%
	White	87.0%	86.3%	91.2%	88.7%	88.5%	89.7%
	Other	79.8%	78.0%	88.6%	83.1%	82.7%	85.8%
Percentage point difference between offer rate and average offer rate	Asian	0.5	-1.6	0.3	0.3	-1.0	-0.1
	Black	-3.0	-2.9	-2.8	-2.3	-1.0	-1.6
	Mixed	-0.7	-1.6	0.6	0.4	0.1	0.4
	White	0.4	0.7	0.5	0.5	0.4	0.3
	Other	-5.4	-0.9	-4.5	-3.3	-1.5	-0.7
Contribution of group to the average offer rate	Asian	0.213	0.221	0.220	0.222	0.219	0.208
	Black	0.229	0.218	0.236	0.240	0.247	0.239
	Mixed	0.119	0.121	0.118	0.117	0.130	0.120
	White	0.807	0.781	0.765	0.748	0.744	0.731
	Other	0.096	0.097	0.084	0.087	0.085	0.076

P.13 18 year old offer rate by ethnic group

Note: The line for a group is not plotted when that group made fewer than 10 applications in any of the years from 2011-2016.

- Asian
- Black
- Mixed
- White
- Other



P.14 Percentage point difference between 18 year old offer rate and average offer rate by ethnic group

Note: The line for a group is not plotted when that group made fewer than 50 applications in any of the years from 2011-2016.

- Asian
- Black
- Mixed
- White
- Other



P.15 Applicants (all ages)

Statistic	2011	2012	2013	2014	2015	2016
June deadline applicants	20,140	18,245	19,820	18,915	20,605	21,590
Placed June deadline applicants	3,255	3,150	3,395	3,145	3,320	3,420
All placed applicants	4,155	3,825	4,085	4,140	4,250	4,235

P.16 Applications (all ages)

Statistic	2011	2012	2013	2014	2015	2016
June deadline applications	21,330	19,170	20,760	19,895	21,615	22,655
Offers	16,135	14,815	17,115	15,660	17,230	18,295
Offer rate	75.7%	77.3%	82.4%	78.7%	79.7%	80.8%

P.17 Applicants (all ages) by sex

Statistic	Sex	2011	2012	2013	2014	2015	2016
June deadline applicants	Men	10,190	9,335	10,220	9,690	10,260	10,920
	Women	9,950	8,910	9,600	9,225	10,345	10,670
Placed June deadline applicants	Men	1,545	1,545	1,650	1,560	1,590	1,690
	Women	1,710	1,605	1,745	1,585	1,725	1,730
All placed applicants	Men	1,995	1,875	1,985	2,035	2,065	2,090
	Women	2,155	1,950	2,100	2,105	2,185	2,150

P.18 Applications (all ages) by sex

Statistic	Sex	2011	2012	2013	2014	2015	2016
June deadline applications	Men	10,795	9,825	10,700	10,200	10,765	11,465
	Women	10,535	9,345	10,060	9,695	10,850	11,190
Offers	Men	7,920	7,335	8,640	7,805	8,340	8,995
	Women	8,215	7,480	8,475	7,855	8,890	9,300
Offer rate	Men	73.4%	74.7%	80.7%	76.5%	77.5%	78.5%
	Women	78.0%	80.0%	84.2%	81.0%	82.0%	83.1%

P.19 Applicants (all ages) by POLAR3 quintile

Statistic	POLAR3 quintile	2011	2012	2013	2014	2015	2016
June deadline applicants	Quintile 1	1,785	1,580	1,700	1,725	1,880	2,070
	Quintile 2	2,930	2,685	2,920	2,935	3,140	3,195
	Quintile 3	4,255	3,875	4,230	4,190	4,670	4,715
	Quintile 4	4,935	4,605	5,075	4,645	5,175	5,325
	Quintile 5	6,175	5,425	5,850	5,380	5,695	6,195
Placed June deadline applicants	Quintile 1	320	300	355	330	315	390
	Quintile 2	550	500	595	560	590	585
	Quintile 3	650	695	765	725	755	750
	Quintile 4	830	830	835	775	810	840
	Quintile 5	900	815	835	755	840	840
All placed applicants	Quintile 1	385	355	415	400	405	450
	Quintile 2	660	610	680	680	730	700
	Quintile 3	840	835	915	960	960	960
	Quintile 4	1,045	1,000	1,040	1,020	1,030	1,020
	Quintile 5	1,215	1,015	1,025	1,070	1,120	1,080

P.20 Applications (all ages) by POLAR3 quintile

Statistic	POLAR3 quintile	2011	2012	2013	2014	2015	2016
June deadline applications	Quintile 1	1,955	1,725	1,845	1,875	2,030	2,260
	Quintile 2	3,205	2,900	3,160	3,195	3,370	3,450
	Quintile 3	4,500	4,045	4,410	4,385	4,875	4,920
	Quintile 4	5,210	4,835	5,295	4,865	5,435	5,575
	Quintile 5	6,395	5,595	6,010	5,535	5,850	6,355
Offers	Quintile 1	1,390	1,175	1,390	1,340	1,510	1,690
	Quintile 2	2,320	2,080	2,465	2,365	2,590	2,640
	Quintile 3	3,190	3,090	3,535	3,345	3,785	3,925
	Quintile 4	3,980	3,760	4,405	3,925	4,360	4,510
	Quintile 5	5,215	4,665	5,280	4,655	4,940	5,460
Offer rate	Quintile 1	71.1%	68.1%	75.5%	71.4%	74.2%	74.7%
	Quintile 2	72.4%	71.7%	77.9%	74.0%	76.9%	76.6%
	Quintile 3	70.8%	76.4%	80.2%	76.3%	77.7%	79.8%
	Quintile 4	76.4%	77.8%	83.2%	80.7%	80.3%	80.9%
	Quintile 5	81.6%	83.4%	87.9%	84.1%	84.5%	85.9%

P.21 Applicants (all ages) by ethnic group

Statistic	Ethnic group	2011	2012	2013	2014	2015	2016
June deadline applicants	Asian	1,955	2,025	2,340	2,300	2,365	2,580
	Black	2,525	2,380	2,675	2,805	3,165	3,420
	Mixed	940	860	985	985	1,190	1,270
	White	14,260	12,475	13,285	12,340	13,235	13,570
	Other	300	350	395	370	475	530
Placed June deadline applicants	Asian	240	245	255	280	280	350
	Black	275	345	405	410	455	505
	Mixed	145	140	165	155	195	195
	White	2,535	2,355	2,500	2,235	2,315	2,265
	Other	40	40	45	50	45	65
All placed applicants	Asian	355	330	345	440	435	485
	Black	390	460	540	590	620	655
	Mixed	190	180	190	220	255	250
	White	3,105	2,705	2,815	2,710	2,755	2,640
	Other	45	45	65	80	65	85

P.22 Applications (all ages) by ethnic group

Statistic	Ethnic group	2011	2012	2013	2014	2015	2016
June deadline applications	Asian	2,035	2,080	2,400	2,345	2,415	2,630
	Black	2,590	2,440	2,730	2,865	3,215	3,485
	Mixed	985	895	1,025	1,015	1,240	1,330
	White	15,240	13,240	14,045	13,175	14,080	14,440
	Other	315	365	410	380	480	540
Offers	Asian	1,505	1,590	1,960	1,880	1,935	2,155
	Black	1,395	1,495	1,845	1,800	2,170	2,430
	Mixed	745	675	845	795	985	1,085
	White	12,175	10,715	12,055	10,825	11,640	12,030
	Other	205	235	305	285	355	415
Offer rate	Asian	74.0%	76.3%	81.6%	80.2%	80.0%	82.0%
	Black	53.8%	61.2%	67.5%	62.8%	67.5%	69.8%
	Mixed	75.5%	75.4%	82.3%	78.6%	79.5%	81.6%
	White	79.9%	80.9%	85.8%	82.1%	82.7%	83.3%
	Other	65.4%	65.0%	74.7%	74.3%	74.4%	76.7%

Technical Notes and Definitions

UCAS undergraduate scheme

Adjustment

Adjustment allows applicants who have met and exceeded the terms of their conditional firm offer to seek and find a place at another provider whilst keeping their place at their original firm choice provider.

Clearing

Clearing is a route for applicants that are not placed and holding no offers to find a place on courses with vacancies.

Cycle year

The UCAS application cycle which runs from September to October the following year. For example the 2016 cycle runs from September 2015 through to October 2016.

End of cycle

The point in the cycle to which the numbers in this report refer, and the point at which the cycle is closed such that no more applications or offers can be made, and no more applicants can be placed. Numbers reported at the end of cycle exclude information on a small number of applicants who cancelled during the cycle.

Extra

Applicants who are unsuccessful in obtaining an offer or decline all offers may be eligible to apply through Extra, where they can apply to one further course at a time. Extra operates from 25 February until early July. It provides applicants who are eligible the possibility of obtaining an offer before exam results are published and Clearing starts.

June 30 deadline

The deadline for main scheme applications. Applicants who apply after this date will go directly into Clearing.

Record of Prior Acceptance (RPA)

RPA is an acceptance route used when a provider informs UCAS of applicants it has accepted outside of the normal application process (e.g. individuals who have applied directly to the provider).

Reporting groups

Ethnic group

High level grouping of ethnic origin as declared by the applicant: 'White', 'Black', 'Asian', 'Mixed', 'Other', 'Unknown'. Applicants who declare themselves as 'Unknown' ethnic origin are not reported in these tables, but are included in the associated csv data file.

POLAR3 quintile

Developed by HEFCE, POLAR3 classifies small areas across the UK into five groups according to their level of young participation in Higher Education. Each of these groups represents around 20 per cent of young people and is ranked from Quintile 1 (areas with the lowest young participation rates, considered as the most disadvantaged) to Quintile 5 (highest young participation rates, considered most advantaged). POLAR3 is based on the participation rates of young people between 2005 and 2009 who entered Higher Education between 2005-06 and 2010-11, therefore is most suitable for applicants aged 19 and under. These groups are assigned using the postcode declared by the applicant at the time of their application. If a UK postcode is invalid, considered unsafe for measurement or there is no link to Census geography possible then the applicant is not assigned to a quintile. Applicants with no POLAR3 quintile are not reported.

Sex

Sex as declared by the applicant.

SIMD quintile

Scottish index of multiple deprivation (SIMD) for 2012 identifies small area concentrations of multiple deprivation across all of Scotland, providing a relative measure of deprivation amongst 6505 small areas (data zones) based on 7 socio-economic domains. These small areas are classified into five groups ranked from Quintile 1 (considered the most deprived) to Quintile 5 (considered least deprived), with equal populations in each quintile. Quintiles are assigned using the postcode declared by the applicant, applicants declaring invalid postcodes are classified as 'Not assigned' and are not reported.

SIMD is only defined for applicants domiciled in Scotland, therefore any applicants domiciled outside of Scotland cannot be assigned to an SIMD quintile and so are not reported for this measure.

SIMD is only reported for providers in Scotland. Application and entry rates by SIMD are reported in the 2016 End of Cycle Report and the 2016 cycle January deadline application rate report.

Statistics reported in the tables

All placed applicants

The number of applicants placed for entry into higher education at the provider through one of their choices, including any choices made through Extra, or via Adjustment, Clearing or RPA.

All placed applicants per 10,000 population

The number of total UK domiciled 18 year old placed applicants for entry into higher education at the provider divided by the number of UK 18 year olds in the population, multiplied by 10,000. This gives the number of 18 year olds, for every 10,000 in the population, that were placed at the provider through one of their choices, including any choices made through Extra, or via Adjustment, Clearing or RPA. It is an alternative way of expressing the entry rate to a provider. By referencing the underlying population this statistic shows how the number of placed applicants is changing in relation to the available pool of potential applicants and so gives the chance that somebody from the group will be placed at a provider.

This statistic is only reported for 18 year olds.

Average offer rate

The offer rate that you might expect if the predicted grades and subject choice of applicants were the only factors that influenced whether an applicant was made an offer by the provider. The average offer rate is calculated by dividing applicants according to their specific combination of grades (for A levels the best three predicted grades are used, for BTECs, International Baccalaureate and Scottish Highers and Advanced Highers, predicted grades along with any grades already achieved upon applying are used) and subject choice. For each combination the number of main scheme offers is divided by the number of main scheme applications, to give an overall offer rate. This is then multiplied by the number of applications made by the group for which the average offer rate is being calculated (for example POLAR3 quintile 1), to give an average number of offers for that group. These average number of offers are then added together across all combinations of predicted grade and subject and divided by the number of main scheme applications from the group to give the average offer rate.

The average offer rate does not attempt to control for any other factors that may play a part in the decision to make an offer, such as the subject of the qualifications studied, their relevance to a course, or the grade in each subject; higher numbers of A levels being studied; the exact profile of grades predicted; personal statements; teacher references; interviews; or any other criteria (such as work experience or portfolios) that may be part of the admissions decision.

This statistic is only reported for 18 year olds.

Contribution of group to the average offer rate

The way in which the average offer rate is defined means that the pattern of application and offers of a group (for example POLAR3 quintile 1) will always contribute, in part, to the average offer rate for that group. When this contribution is large, the average offer rate will mainly reflect the patterns for the group, meaning that the value of the average offer rate will be similar to the offer rate, the percentage point difference statistic will be small, and any real difference between the offer rate and what might be expected given the predicted grades and subject choices of the applicants will be difficult to detect.

Values of the contribution of group to the average offer rate range between 0 and 1. The closer the value is to 1 the greater the contribution a group makes to its own average offer rate.

This statistic is only reported for 18 year olds.

Placed June deadline applicants

An applicant who has been placed for entry into higher education at the provider through a June deadline application.

Placed June deadline applicants per 10,000 population

The number of UK domiciled 18 year old placed June deadline applicants at the provider divided by the number of UK 18 year olds in the population, multiplied by 10,000. This gives the number of 18 year olds, for every 10,000 in the population, that were placed at the provider through one of their June deadline applications. It is an alternative way of expressing the entry rate to a provider, but for placed June deadline applicants only. By referencing the underlying population this statistic shows how the number of placed June deadline applicants is changing in relation to the available pool of potential 18 year old applicants and so gives the chance that somebody from the group will be placed at a provider through a June deadline application.

This statistic is only reported for 18 year olds.

June deadline applications

An application (or choice) to a course in higher education to the provider that is made by the June 30 deadline. Each applicant can make up to five choices this way. The number of June deadline applications does not include choices made through the following routes: Clearing, Extra, Adjustment and RPAs. Applications made to October deadline courses received after the October deadline are not included in these statistics.

June deadline applicants

The number of applicants that made at least one application to the provider by the June 30 deadline.

June deadline applicants per 10,000 population

The number of UK domiciled 18 year old June deadline applicants to the provider divided by the number of UK 18 year olds in the population, multiplied by 10,000. This gives the number of 18 year olds, for every 10,000 in the population, who applied by the June 30 deadline. It is equivalent to the application rate. By referencing the underlying population this statistic shows how the number of June deadline applicants is changing in relation to the available pool of potential 18 year old applicants and so gives the chance that somebody from the group will apply to a provider by the June 30 deadline.

This statistic is only reported for 18 year olds.

Offers

An offer is defined as a provider's decision in response to an application to offer a place to an applicant, often subject to the applicant satisfying academic and/or other criteria, via a June deadline application (i.e. does not cover choices made through the following routes: Clearing, Extra, Adjustment and RPAs).

Offer rate

The number of offers made divided by the number of June deadline applications. This gives the proportion of all June deadline applications to the provider that received an offer.

Percentage point difference between offer rate and average offer rate

The offer rate minus the average offer rate.

The percentage point difference can be compared to the expected range of statistical variation resulting from the calculation of the average offer rate using the Average Offer Rate Lookup Table. Where the value of the percentage point difference lies outside of this range, the percentage point difference may be considered to represent a real difference between the offer rate and the average offer rate.

Other definitions

Age

This analysis uses country-specific age definitions that align with the cut off points for school and college cohorts within the different administrations of the UK. For England and Wales, ages are defined on the 31 August, for Northern Ireland on the 1 July and for Scotland on the 28 February the following year. Defining ages in this way matches the assignment of children to school cohorts. For applicants outside of the UK a cohort cut off of 31 August has been used.

Provider

A higher education provider - a university or college.

UK domiciled

Declared area of permanent residence within England, Northern Ireland, Scotland and Wales. Applicants from the Channel Islands and Isle of Man are not included.