

Higher tariff providers

Cycle years: 2011 - 2016

Cycle Reference Point: End of Cycle

Applicant coverage: UK domiciled

Reporting groups: Sex, POLAR3, ethnic group

Applicant statistics: June deadline applicants, placed June deadline applicants, all placed applicants, June deadline applicants per 10,000 population, placed June deadline applicants per 10,000 population, all placed applicants per 10,000 population

Application statistics: June deadline applications, offers, offer rate, average offer rate, percentage point difference between offer rate and average offer rate, contribution of group to the average offer rate

Non-disclosure controls: To avoid the disclosure of information about any individual the following measures are taken

- Applicants, placed applicants, applications and offers are rounded to the nearest 5.
- Applicants/placed applicants per 10,000 population figures are reported as 0 if the applicant/placed applicant figures are rounded to 0.
- All statistics related to the offer rate are not reported when the number of applications for a group is less than 10. The percentage point difference between the offer rate and the average offer rate is not reported when the number of applications for a group is less than 50.
- Offer rates are reported as 0% if there are fewer than 5 offers, and 100% if the number of offers is within 5 of the number of applications. When the offer rate is reported as 0% or 100%, it is reported in italics.

Contents:

18 year old applicants:	P.1
18 year old applications:	P.2
18 year old applicants by sex:	P.3
18 year old applications by sex:	P.4
18 year old applicants by POLAR3 quintile:	P.7
18 year old applications by POLAR3 quintile:	P.8
18 year old applicants by ethnic group:	P.11
18 year old applications by ethnic group:	P.12
Applicants (all ages):	P.15
Applications (all ages):	P.16
Applicants (all ages) by sex:	P.17
Applications (all ages) by sex:	P.18
Applicants (all ages) by POLAR3 quintile:	P.19
Applications (all ages) by POLAR3 quintile:	P.20
Applicants (all ages) by ethnic group:	P.21
Applications (all ages) by ethnic group:	P.22

P.1 18 year old applicants

Statistic	2011	2012	2013	2014	2015	2016
June deadline applicants	148,355	144,470	146,955	151,690	161,255	166,585
Placed June deadline applicants	62,125	64,415	67,695	68,410	71,955	72,820
All placed applicants	64,270	68,985	72,465	73,655	77,820	79,250
June deadline applicants per 10,000 population	1,926.4	1,867.8	1,931.1	2,014.1	2,104.7	2,222.5
Placed June deadline applicants per 10,000	806.7	832.8	889.6	908.3	939.2	971.5
All placed applicants per 10,000 population	834.6	891.8	952.2	978.0	1,015.8	1,057.3

P.2 18 year old applications

Statistic	2011	2012	2013	2014	2015	2016
June deadline applications	429,770	422,625	433,260	444,795	470,220	485,225
Offers	266,525	281,420	300,440	319,405	344,440	356,235
Offer rate	62.0%	66.6%	69.3%	71.8%	73.3%	73.4%

P.3 18 year old applicants by sex

Statistic	Sex	2011	2012	2013	2014	2015	2016
June deadline applicants	Men	67,465	65,100	66,280	67,880	71,360	72,950
	Women	80,890	79,375	80,675	83,810	89,890	93,635
Placed June deadline applicants	Men	28,990	29,580	31,195	31,195	32,505	32,115
	Women	33,135	34,835	36,500	37,215	39,450	40,700
All placed applicants	Men	29,915	31,600	33,395	33,650	35,150	35,105
	Women	34,355	37,380	39,070	40,005	42,670	44,145
June deadline applicants per 10,000 population	Men	1,714.4	1,641.5	1,697.7	1,753.5	1,818.4	1,899.1
	Women	2,148.0	2,105.8	2,177.0	2,289.7	2,405.4	2,562.5
Placed June deadline applicants per 10,000 population	Men	736.7	745.9	799.1	805.9	828.3	836.1
	Women	879.8	924.1	985.0	1,016.6	1,055.6	1,113.9
All placed applicants per 10,000 population	Men	760.2	796.9	855.4	869.3	895.7	913.9
	Women	912.3	991.8	1,054.3	1,092.9	1,141.8	1,208.1

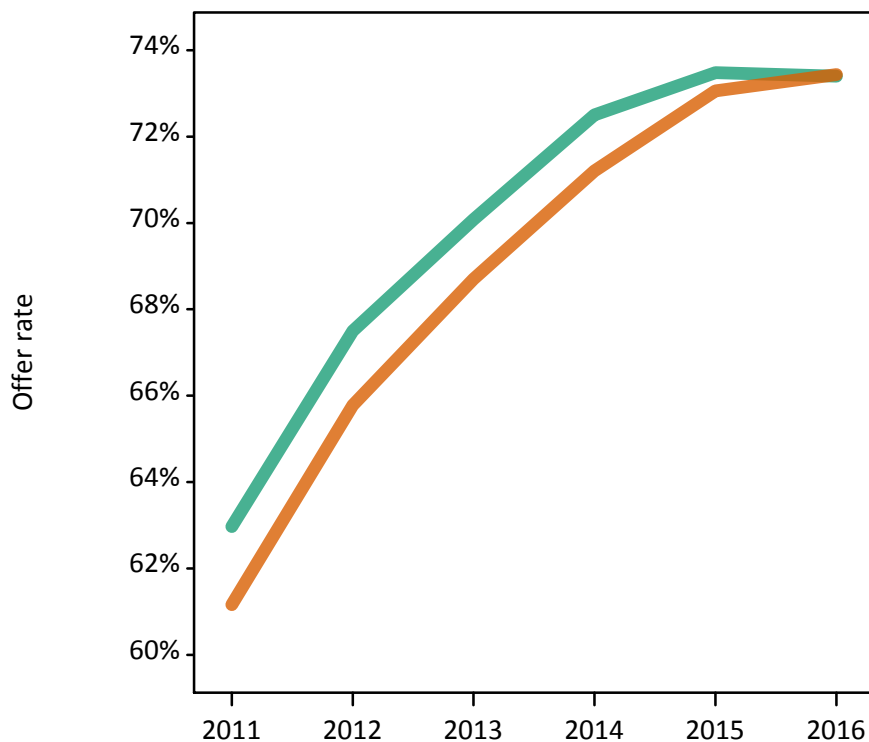
P.4 18 year old applications by sex

Statistic	Sex	2011	2012	2013	2014	2015	2016
June deadline applications	Men	203,410	198,755	203,225	206,520	217,015	220,390
	Women	226,360	223,865	230,030	238,280	253,205	264,835
Offers	Men	128,090	134,155	142,410	149,730	159,460	161,760
	Women	138,435	147,260	158,025	169,675	184,980	194,475
Offer rate	Men	63.0%	67.5%	70.1%	72.5%	73.5%	73.4%
	Women	61.2%	65.8%	68.7%	71.2%	73.1%	73.4%
Average offer rate	Men	63.7%	68.2%	70.8%	73.1%	74.1%	74.0%
	Women	60.5%	65.1%	68.1%	70.7%	72.5%	72.9%
Percentage point difference between offer rate and average offer rate	Men	-0.8	-0.7	-0.7	-0.6	-0.7	-0.6
	Women	0.7	0.6	0.6	0.5	0.6	0.5
Contribution of group to the average offer rate	Men	0.596	0.596	0.597	0.596	0.596	0.588
	Women	0.637	0.641	0.644	0.649	0.654	0.657

P.5 18 year old offer rate by sex

Note: The line for a group is not plotted when that group made fewer than 10 applications in any of the years from 2011-2016.

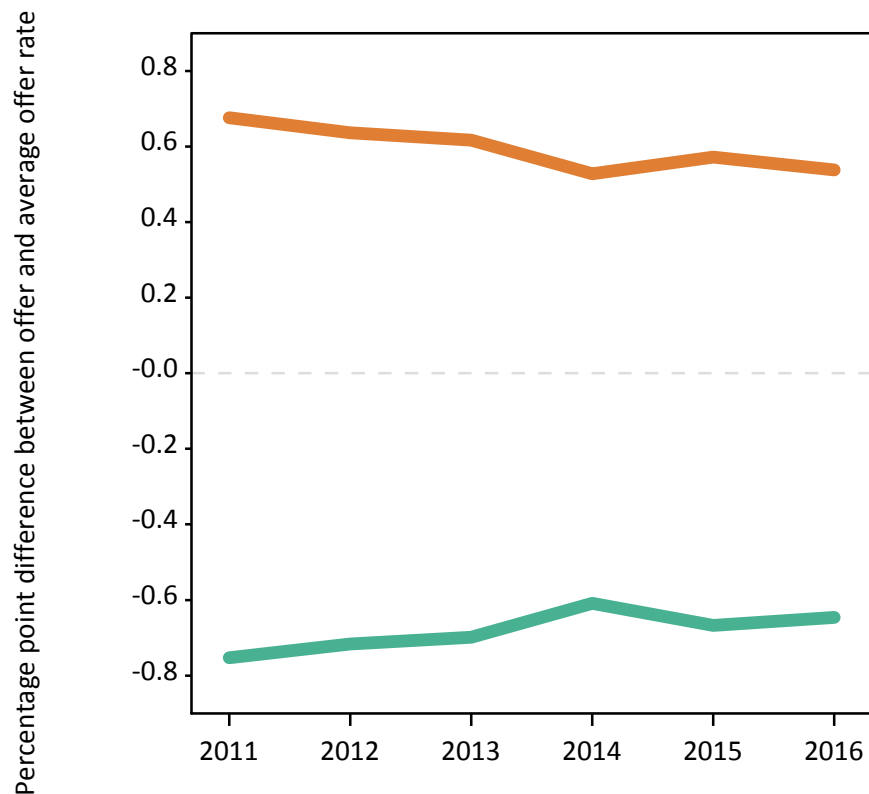
Men
Women



P.6 Percentage point difference between 18 year old offer rate and average offer rate by sex

Note: The line for a group is not plotted when that group made fewer than 50 applications in any of the years from 2011-2016.

Men
Women



P.7 18 year old applicants by POLAR3 quintile

Statistic	POLAR3 quintile	2011	2012	2013	2014	2015	2016
June deadline applicants	Quintile 1	11,270	11,060	11,510	12,580	13,710	14,210
	Quintile 2	18,550	18,105	18,775	19,795	21,530	22,300
	Quintile 3	25,475	24,875	25,560	26,840	28,700	29,675
	Quintile 4	35,550	34,500	35,030	35,380	37,945	38,985
	Quintile 5	57,190	55,630	55,805	56,800	58,985	60,745
Placed June deadline applicants	Quintile 1	3,270	3,495	3,755	4,140	4,325	4,540
	Quintile 2	6,095	6,345	7,035	7,095	7,630	7,785
	Quintile 3	9,255	9,675	10,485	10,515	11,125	11,360
	Quintile 4	14,815	15,350	16,100	16,000	17,250	17,035
	Quintile 5	28,555	29,440	30,225	30,550	31,445	31,825
All placed applicants	Quintile 1	3,390	3,745	4,030	4,445	4,685	4,895
	Quintile 2	6,325	6,805	7,515	7,630	8,240	8,515
	Quintile 3	9,575	10,395	11,230	11,370	12,100	12,380
	Quintile 4	15,305	16,415	17,235	17,235	18,610	18,500
	Quintile 5	29,535	31,495	32,330	32,855	34,000	34,670
June deadline applicants per 10,000 population	Quintile 1	784.0	776.5	826.0	904.1	978.4	1,052.5
	Quintile 2	1,233.8	1,207.7	1,274.2	1,353.0	1,449.6	1,542.0
	Quintile 3	1,655.5	1,610.9	1,675.9	1,783.6	1,869.1	1,974.0
	Quintile 4	2,269.5	2,174.2	2,239.9	2,295.7	2,424.1	2,525.0
	Quintile 5	3,455.1	3,311.4	3,375.0	3,482.8	3,523.3	3,676.7
Placed June deadline applicants per 10,000 population	Quintile 1	227.4	245.3	269.5	297.5	308.8	336.1
	Quintile 2	405.6	423.1	477.4	485.0	513.8	538.4
	Quintile 3	601.5	626.5	687.5	698.6	724.4	755.8
	Quintile 4	945.9	967.5	1,029.3	1,038.1	1,102.1	1,103.4
	Quintile 5	1,725.2	1,752.4	1,827.9	1,873.3	1,878.4	1,926.4
All placed applicants per 10,000 population	Quintile 1	235.8	263.0	289.2	319.4	334.3	362.7
	Quintile 2	420.9	454.0	510.0	521.5	554.8	588.8
	Quintile 3	622.2	673.2	736.4	755.4	787.9	823.4
	Quintile 4	977.0	1,034.6	1,102.0	1,118.5	1,188.8	1,198.2
	Quintile 5	1,784.3	1,874.6	1,955.3	2,014.4	2,031.0	2,098.5

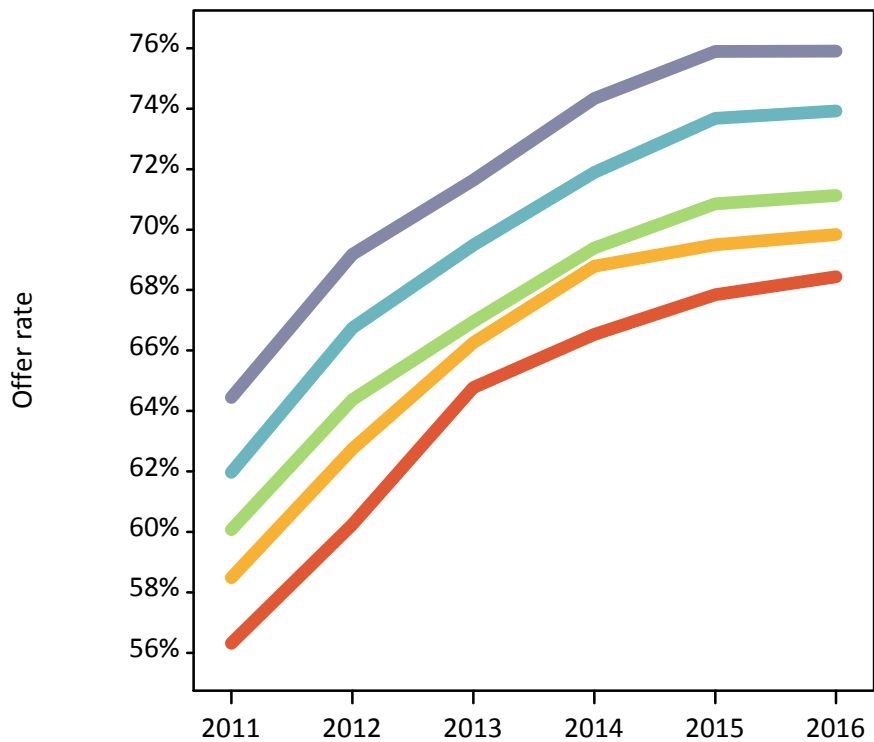
P.8 18 year old applications by POLAR3 quintile

Statistic	POLAR3 quintile	2011	2012	2013	2014	2015	2016
June deadline applications	Quintile 1	26,150	25,760	26,965	29,635	32,130	33,365
	Quintile 2	46,400	45,555	47,315	49,590	54,030	55,655
	Quintile 3	67,770	66,715	69,505	72,125	76,455	79,050
	Quintile 4	102,495	100,605	102,635	103,905	110,925	113,720
	Quintile 5	185,970	183,095	186,040	188,690	195,500	201,455
Offers	Quintile 1	14,730	15,520	17,465	19,720	21,800	22,835
	Quintile 2	27,140	28,585	31,350	34,110	37,550	38,865
	Quintile 3	40,715	42,945	46,535	50,045	54,170	56,225
	Quintile 4	63,520	67,150	71,315	74,705	81,735	84,070
	Quintile 5	119,845	126,665	133,275	140,270	148,380	152,910
Offer rate	Quintile 1	56.3%	60.2%	64.8%	66.5%	67.8%	68.4%
	Quintile 2	58.5%	62.7%	66.3%	68.8%	69.5%	69.8%
	Quintile 3	60.1%	64.4%	67.0%	69.4%	70.8%	71.1%
	Quintile 4	62.0%	66.7%	69.5%	71.9%	73.7%	73.9%
	Quintile 5	64.4%	69.2%	71.6%	74.3%	75.9%	75.9%
Average offer rate	Quintile 1	58.2%	62.0%	65.9%	67.3%	68.7%	68.8%
	Quintile 2	59.7%	63.8%	66.9%	69.1%	69.9%	70.5%
	Quintile 3	60.8%	65.1%	67.7%	70.0%	71.6%	71.7%
	Quintile 4	62.1%	67.1%	69.7%	72.1%	73.9%	74.1%
	Quintile 5	63.5%	68.3%	70.9%	73.8%	75.2%	75.3%
Percentage point difference between offer rate and average offer rate	Quintile 1	-1.8	-1.8	-1.1	-0.7	-0.9	-0.4
	Quintile 2	-1.2	-1.0	-0.6	-0.3	-0.4	-0.6
	Quintile 3	-0.7	-0.7	-0.8	-0.6	-0.8	-0.6
	Quintile 4	-0.2	-0.3	-0.2	-0.2	-0.2	-0.2
	Quintile 5	0.9	0.9	0.7	0.6	0.7	0.6
Contribution of group to the average offer rate	Quintile 1	0.151	0.149	0.151	0.152	0.153	0.151
	Quintile 2	0.180	0.178	0.177	0.177	0.181	0.179
	Quintile 3	0.214	0.213	0.214	0.216	0.216	0.214
	Quintile 4	0.284	0.282	0.279	0.277	0.278	0.276
	Quintile 5	0.487	0.488	0.484	0.479	0.473	0.472

P.9 18 year old offer rate by POLAR3 quintile

Note: The line for a group is not plotted when that group made fewer than 10 applications in any of the years from 2011-2016.

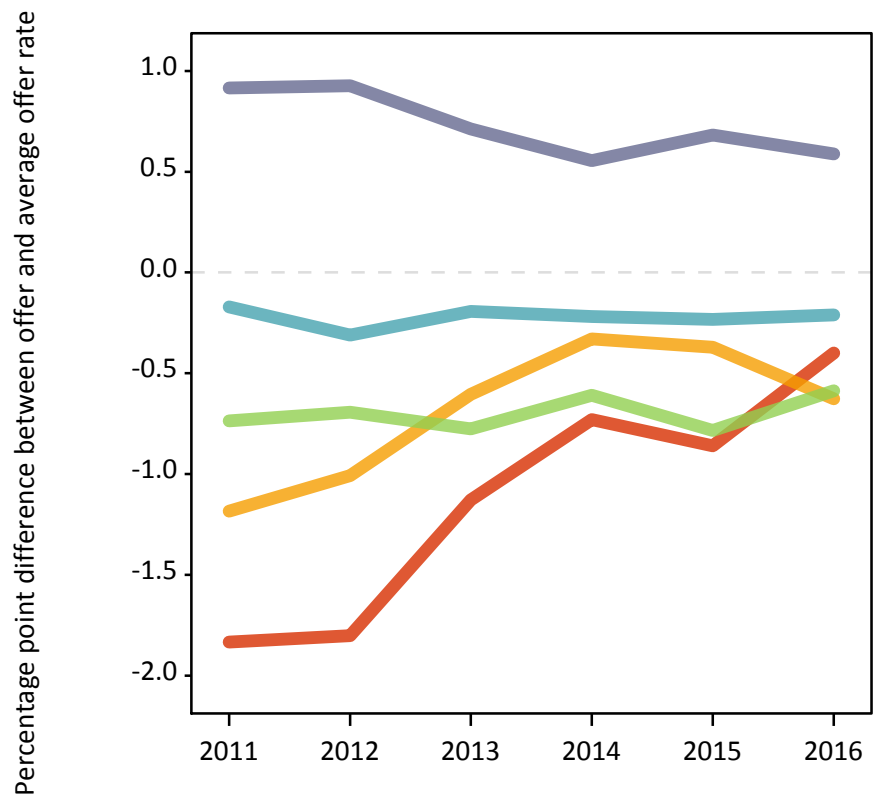
- Quintile 1
- Quintile 2
- Quintile 3
- Quintile 4
- Quintile 5



P.10 Percentage point difference between 18 year old offer rate and average offer rate by POLAR3 quintile

Note: The line for a group is not plotted when that group made fewer than 50 applications in any of the years from 2011-2016.

- Quintile 1
- Quintile 2
- Quintile 3
- Quintile 4
- Quintile 5



P.11 18 year old applicants by ethnic group

Statistic	Ethnic group	2011	2012	2013	2014	2015	2016
June deadline applicants	Asian	14,640	14,625	15,495	16,695	18,390	19,905
	Black	4,435	4,415	5,235	5,865	6,620	7,300
	Mixed	5,125	5,125	5,440	5,905	6,665	7,155
	White	121,910	117,960	118,500	120,675	126,420	128,805
	Other	1,270	1,470	1,515	1,805	2,040	2,205
Placed June deadline applicants	Asian	4,745	5,150	5,675	5,825	6,445	6,645
	Black	955	1,035	1,360	1,480	1,685	1,845
	Mixed	2,205	2,340	2,630	2,785	3,065	3,315
	White	53,295	54,945	57,140	57,370	59,490	59,820
	Other	440	510	510	610	690	670
All placed applicants	Asian	5,015	5,735	6,420	6,625	7,375	7,720
	Black	1,030	1,245	1,580	1,755	2,000	2,200
	Mixed	2,295	2,555	2,840	3,040	3,405	3,685
	White	54,975	58,415	60,605	61,150	63,610	64,260
	Other	460	570	585	715	800	795
June deadline applicants per 10,000 population	Asian	2,323.3	2,258.2	2,349.7	2,462.1	2,598.6	2,765.9
	Black	1,621.8	1,568.1	1,762.9	1,935.5	2,080.3	2,332.6
	Mixed	2,116.0	1,968.4	2,012.0	2,052.5	2,161.5	2,274.0
	White	1,883.0	1,826.9	1,883.2	1,956.0	2,029.0	2,129.4
	Other	1,566.7	1,663.5	1,668.5	1,940.4	2,116.5	2,222.0
Placed June deadline applicants per 10,000 population	Asian	753.1	795.4	860.8	858.9	910.9	923.5
	Black	348.6	367.2	458.7	488.6	529.3	589.0
	Mixed	909.6	899.2	972.0	967.4	993.7	1,053.4
	White	823.2	851.0	908.1	929.9	954.8	988.9
	Other	544.5	577.5	562.4	657.5	713.8	674.8
All placed applicants per 10,000 population	Asian	795.4	885.9	973.6	976.9	1,042.0	1,072.6
	Black	376.0	442.5	532.5	579.6	628.3	703.7
	Mixed	948.4	980.2	1,050.4	1,056.3	1,104.6	1,171.7
	White	849.1	904.7	963.2	991.1	1,020.9	1,062.3
	Other	567.9	645.3	645.1	768.2	828.9	798.7

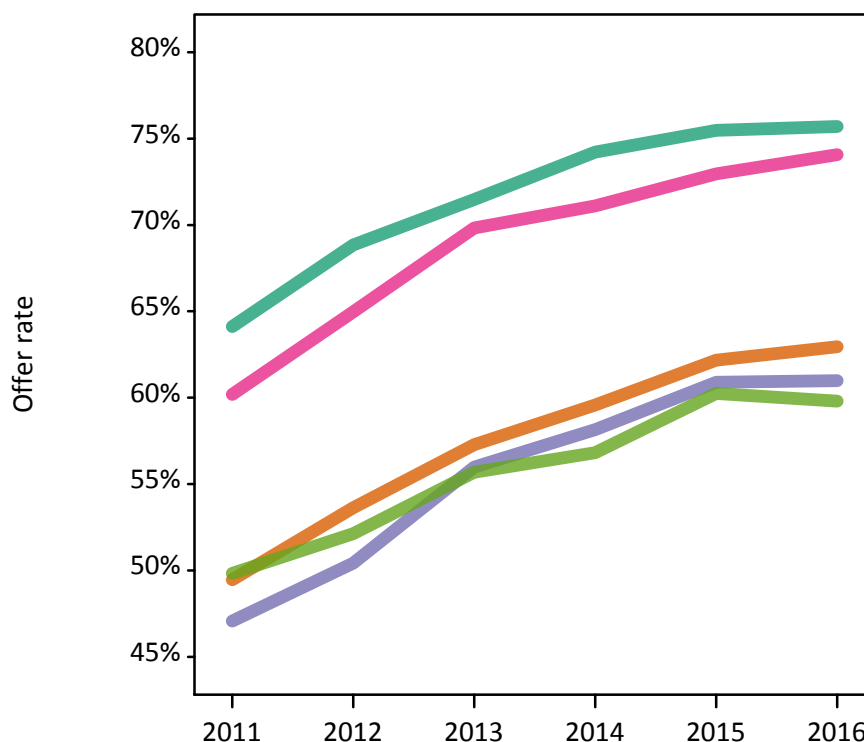
P.12 18 year old applications by ethnic group

Statistic	Ethnic group	2011	2012	2013	2014	2015	2016
June deadline applications	Asian	40,890	40,670	43,405	46,350	50,550	54,470
	Black	10,415	10,395	12,515	14,160	15,905	17,555
	Mixed	15,660	15,935	17,040	18,095	20,340	22,245
	White	355,850	348,545	353,560	358,685	374,080	381,125
	Other	3,645	4,125	4,135	5,100	5,545	5,920
Offers	Asian	20,225	21,810	24,860	27,615	31,430	34,285
	Black	4,905	5,240	7,005	8,235	9,685	10,705
	Mixed	9,425	10,355	11,900	12,865	14,840	16,475
	White	228,155	239,975	252,675	266,200	282,370	288,495
	Other	1,815	2,150	2,305	2,895	3,340	3,540
Offer rate	Asian	49.5%	53.6%	57.3%	59.6%	62.2%	62.9%
	Black	47.1%	50.4%	56.0%	58.1%	60.9%	61.0%
	Mixed	60.2%	65.0%	69.8%	71.1%	73.0%	74.1%
	White	64.1%	68.9%	71.5%	74.2%	75.5%	75.7%
	Other	49.8%	52.1%	55.7%	56.8%	60.2%	59.8%
Average offer rate	Asian	51.3%	55.2%	58.6%	61.2%	63.7%	64.2%
	Black	50.0%	54.2%	58.7%	61.1%	63.8%	64.0%
	Mixed	59.9%	64.9%	69.4%	71.5%	73.0%	73.5%
	White	63.8%	68.5%	71.2%	73.8%	75.1%	75.4%
	Other	51.3%	55.7%	57.7%	59.6%	63.0%	62.8%
Percentage point difference between offer rate and average offer rate	Asian	-1.8	-1.6	-1.3	-1.6	-1.6	-1.2
	Black	-2.9	-3.8	-2.8	-3.0	-2.9	-3.0
	Mixed	0.3	0.1	0.4	-0.4	0.0	0.5
	White	0.3	0.3	0.3	0.4	0.4	0.3
	Other	-1.4	-3.6	-2.0	-2.8	-2.7	-3.0
Contribution of group to the average offer rate	Asian	0.279	0.269	0.268	0.262	0.262	0.265
	Black	0.135	0.135	0.143	0.144	0.132	0.137
	Mixed	0.102	0.105	0.104	0.101	0.103	0.106
	White	0.865	0.861	0.854	0.845	0.835	0.828
	Other	0.081	0.097	0.093	0.090	0.086	0.094

P.13 18 year old offer rate by ethnic group

Note: The line for a group is not plotted when that group made fewer than 10 applications in any of the years from 2011-2016.

- Asian
- Black
- Mixed
- White
- Other



P.14 Percentage point difference between 18 year old offer rate and average offer rate by ethnic group

Note: The line for a group is not plotted when that group made fewer than 50 applications in any of the years from 2011-2016.

- Asian
- Black
- Mixed
- White
- Other



P.15 Applicants (all ages)

Statistic	2011	2012	2013	2014	2015	2016
June deadline applicants	258,445	240,595	249,670	259,255	274,080	281,305
Placed June deadline applicants	91,015	88,915	95,085	97,425	103,420	105,500
All placed applicants	94,715	95,835	102,620	105,550	112,685	115,160

P.16 Applications (all ages)

Statistic	2011	2012	2013	2014	2015	2016
June deadline applications	666,425	627,035	655,435	676,915	714,675	736,310
Offers	352,830	357,790	390,555	416,875	450,365	467,100
Offer rate	52.9%	57.1%	59.6%	61.6%	63.0%	63.4%

P.17 Applicants (all ages) by sex

Statistic	Sex	2011	2012	2013	2014	2015	2016
June deadline applicants	Men	113,565	104,745	109,105	112,495	118,415	120,155
	Women	144,885	135,850	140,560	146,760	155,665	161,150
Placed June deadline applicants	Men	42,190	41,045	43,845	44,365	46,425	46,380
	Women	48,825	47,870	51,240	53,055	56,995	59,120
All placed applicants	Men	43,800	44,185	47,310	48,220	50,685	50,960
	Women	50,915	51,650	55,305	57,335	62,000	64,200

P.18 Applications (all ages) by sex

Statistic	Sex	2011	2012	2013	2014	2015	2016
June deadline applications	Men	310,890	291,290	304,290	311,290	327,005	332,490
	Women	355,530	335,745	351,145	365,625	387,670	403,820
Offers	Men	170,650	172,560	187,190	197,315	211,170	214,760
	Women	182,185	185,230	203,365	219,555	239,195	252,340
Offer rate	Men	54.9%	59.2%	61.5%	63.4%	64.6%	64.6%
	Women	51.2%	55.2%	57.9%	60.0%	61.7%	62.5%

P.19 Applicants (all ages) by POLAR3 quintile

Statistic	POLAR3 quintile	2011	2012	2013	2014	2015	2016
June deadline applicants	Quintile 1	25,245	23,665	24,820	26,490	28,065	28,580
	Quintile 2	35,615	33,520	35,125	37,445	39,755	40,640
	Quintile 3	47,290	43,920	45,855	48,195	50,935	52,245
	Quintile 4	59,685	55,500	57,465	58,990	62,680	64,160
	Quintile 5	89,795	83,290	85,750	87,545	91,830	94,255
Placed June deadline applicants	Quintile 1	5,715	5,670	6,185	6,805	7,060	7,435
	Quintile 2	9,555	9,280	10,450	10,830	11,595	11,990
	Quintile 3	14,080	13,695	15,095	15,415	16,460	16,915
	Quintile 4	21,465	21,025	22,395	22,720	24,465	24,475
	Quintile 5	39,945	39,030	40,780	41,470	43,560	44,210
All placed applicants	Quintile 1	6,010	6,170	6,735	7,410	7,730	8,105
	Quintile 2	9,970	10,070	11,300	11,710	12,645	13,155
	Quintile 3	14,665	14,830	16,300	16,775	18,085	18,545
	Quintile 4	22,300	22,635	24,165	24,590	26,605	26,640
	Quintile 5	41,495	41,890	43,905	44,865	47,305	48,210

P.20 Applications (all ages) by POLAR3 quintile

Statistic	POLAR3 quintile	2011	2012	2013	2014	2015	2016
June deadline applications	Quintile 1	50,930	47,870	50,605	54,605	58,080	59,555
	Quintile 2	78,685	74,335	78,560	83,305	88,785	91,245
	Quintile 3	111,225	104,075	110,200	115,250	121,590	125,090
	Quintile 4	155,470	146,445	152,355	155,805	165,630	169,955
	Quintile 5	267,935	252,415	261,995	266,400	278,380	286,770
Offers	Quintile 1	21,665	21,895	25,175	28,200	30,930	32,765
	Quintile 2	37,335	37,555	42,550	46,385	50,605	52,650
	Quintile 3	54,760	55,300	61,380	66,655	72,120	74,880
	Quintile 4	83,370	84,915	91,905	97,205	105,970	109,405
	Quintile 5	154,710	157,220	168,720	177,620	189,545	195,420
Offer rate	Quintile 1	42.5%	45.7%	49.7%	51.6%	53.3%	55.0%
	Quintile 2	47.4%	50.5%	54.2%	55.7%	57.0%	57.7%
	Quintile 3	49.2%	53.1%	55.7%	57.8%	59.3%	59.9%
	Quintile 4	53.6%	58.0%	60.3%	62.4%	64.0%	64.4%
	Quintile 5	57.7%	62.3%	64.4%	66.7%	68.1%	68.1%

P.21 Applicants (all ages) by ethnic group

Statistic	Ethnic group	2011	2012	2013	2014	2015	2016
June deadline applicants	Asian	27,635	26,390	28,390	30,520	33,110	34,950
	Black	16,165	15,620	16,065	17,080	18,330	19,220
	Mixed	9,295	8,755	9,575	10,390	11,580	12,250
	White	200,120	184,425	190,140	195,330	204,060	207,360
	Other	2,870	3,415	3,505	3,970	4,415	4,705
Placed June deadline applicants	Asian	7,275	7,625	8,235	8,575	9,525	9,855
	Black	1,910	1,970	2,335	2,550	2,965	3,250
	Mixed	3,335	3,280	3,790	4,005	4,460	4,760
	White	76,855	74,430	79,120	80,600	84,340	85,485
	Other	735	860	885	1,005	1,125	1,175
All placed applicants	Asian	7,740	8,565	9,395	9,865	11,045	11,565
	Black	2,090	2,350	2,750	3,055	3,555	3,880
	Mixed	3,490	3,590	4,150	4,405	4,990	5,290
	White	79,600	79,470	84,385	86,235	90,570	91,925
	Other	775	985	1,030	1,190	1,335	1,380

P.22 Applications (all ages) by ethnic group

Statistic	Ethnic group	2011	2012	2013	2014	2015	2016
June deadline applications	Asian	69,910	67,170	72,245	77,000	82,820	87,215
	Black	29,510	28,500	30,275	33,000	35,775	37,765
	Mixed	25,060	23,990	26,335	28,305	31,425	33,685
	White	528,010	493,445	512,510	523,410	546,705	558,535
	Other	7,160	8,235	8,460	9,730	10,650	11,350
Offers	Asian	28,810	30,430	34,705	38,415	44,050	47,550
	Black	8,100	8,415	10,680	12,515	14,770	16,285
	Mixed	12,850	13,520	15,905	17,330	19,880	21,790
	White	297,175	299,265	322,765	341,455	362,380	371,595
	Other	2,720	3,340	3,660	4,385	5,140	5,615
Offer rate	Asian	41.2%	45.3%	48.0%	49.9%	53.2%	54.5%
	Black	27.4%	29.5%	35.3%	37.9%	41.3%	43.1%
	Mixed	51.3%	56.4%	60.4%	61.2%	63.3%	64.7%
	White	56.3%	60.6%	63.0%	65.2%	66.3%	66.5%
	Other	38.0%	40.6%	43.3%	45.1%	48.3%	49.5%

Technical Notes and Definitions

UCAS undergraduate scheme

Adjustment

Adjustment allows applicants who have met and exceeded the terms of their conditional firm offer to seek and find a place at another provider whilst keeping their place at their original firm choice provider.

Clearing

Clearing is a route for applicants that are not placed and holding no offers to find a place on courses with vacancies.

Cycle year

The UCAS application cycle which runs from September to October the following year. For example the 2016 cycle runs from September 2015 through to October 2016.

End of cycle

The point in the cycle to which the numbers in this report refer, and the point at which the cycle is closed such that no more applications or offers can be made, and no more applicants can be placed. Numbers reported at the end of cycle exclude information on a small number of applicants who cancelled during the cycle.

Extra

Applicants who are unsuccessful in obtaining an offer or decline all offers may be eligible to apply through Extra, where they can apply to one further course at a time. Extra operates from 25 February until early July. It provides applicants who are eligible the possibility of obtaining an offer before exam results are published and Clearing starts.

June 30 deadline

The deadline for main scheme applications. Applicants who apply after this date will go directly into Clearing.

Record of Prior Acceptance (RPA)

RPA is an acceptance route used when a provider informs UCAS of applicants it has accepted outside of the normal application process (e.g. individuals who have applied directly to the provider).

Reporting groups

Ethnic group

High level grouping of ethnic origin as declared by the applicant: 'White', 'Black', 'Asian', 'Mixed', 'Other', 'Unknown'. Applicants who declare themselves as 'Unknown' ethnic origin are not reported in these tables, but are included in the associated csv data file.

POLAR3 quintile

Developed by HEFCE, POLAR3 classifies small areas across the UK into five groups according to their level of young participation in Higher Education. Each of these groups represents around 20 per cent of young people and is ranked from Quintile 1 (areas with the lowest young participation rates, considered as the most disadvantaged) to Quintile 5 (highest young participation rates, considered most advantaged). POLAR3 is based on the participation rates of young people between 2005 and 2009 who entered Higher Education between 2005-06 and 2010-11, therefore is most suitable for applicants aged 19 and under. These groups are assigned using the postcode declared by the applicant at the time of their application. If a UK postcode is invalid, considered unsafe for measurement or there is no link to Census geography possible then the applicant is not assigned to a quintile. Applicants with no POLAR3 quintile are not reported.

Sex

Sex as declared by the applicant.

SIMD quintile

Scottish index of multiple deprivation (SIMD) for 2012 identifies small area concentrations of multiple deprivation across all of Scotland, providing a relative measure of deprivation amongst 6505 small areas (data zones) based on 7 socio-economic domains. These small areas are classified into five groups ranked from Quintile 1 (considered the most deprived) to Quintile 5 (considered least deprived), with equal populations in each quintile. Quintiles are assigned using the postcode declared by the applicant, applicants declaring invalid postcodes are classified as 'Not assigned' and are not reported.

SIMD is only defined for applicants domiciled in Scotland, therefore any applicants domiciled outside of Scotland cannot be assigned to an SIMD quintile and so are not reported for this measure.

SIMD is only reported for providers in Scotland. Application and entry rates by SIMD are reported in the 2016 End of Cycle Report and the 2016 cycle January deadline application rate report.

Statistics reported in the tables

All placed applicants

The number of applicants placed for entry into higher education at the provider through one of their choices, including any choices made through Extra, or via Adjustment, Clearing or RPA.

All placed applicants per 10,000 population

The number of total UK domiciled 18 year old placed applicants for entry into higher education at the provider divided by the number of UK 18 year olds in the population, multiplied by 10,000. This gives the number of 18 year olds, for every 10,000 in the population, that were placed at the provider through one of their choices, including any choices made through Extra, or via Adjustment, Clearing or RPA. It is an alternative way of expressing the entry rate to a provider. By referencing the underlying population this statistic shows how the number of placed applicants is changing in relation to the available pool of potential applicants and so gives the chance that somebody from the group will be placed at a provider.

This statistic is only reported for 18 year olds.

Average offer rate

The offer rate that you might expect if the predicted grades and subject choice of applicants were the only factors that influenced whether an applicant was made an offer by the provider. The average offer rate is calculated by dividing applicants according to their specific combination of grades (for A levels the best three predicted grades are used, for BTECs, International Baccalaureate and Scottish Highers and Advanced Highers, predicted grades along with any grades already achieved upon applying are used) and subject choice. For each combination the number of main scheme offers is divided by the number of main scheme applications, to give an overall offer rate. This is then multiplied by the number of applications made by the group for which the average offer rate is being calculated (for example POLAR3 quintile 1), to give an average number of offers for that group. These average number of offers are then added together across all combinations of predicted grade and subject and divided by the number of main scheme applications from the group to give the average offer rate.

The average offer rate does not attempt to control for any other factors that may play a part in the decision to make an offer, such as the subject of the qualifications studied, their relevance to a course, or the grade in each subject; higher numbers of A levels being studied; the exact profile of grades predicted; personal statements; teacher references; interviews; or any other criteria (such as work experience or portfolios) that may be part of the admissions decision.

This statistic is only reported for 18 year olds.

Contribution of group to the average offer rate

The way in which the average offer rate is defined means that the pattern of application and offers of a group (for example POLAR3 quintile 1) will always contribute, in part, to the average offer rate for that group. When this contribution is large, the average offer rate will mainly reflect the patterns for the group, meaning that the value of the average offer rate will be similar to the offer rate, the percentage point difference statistic will be small, and any real difference between the offer rate and what might be expected given the predicted grades and subject choices of the applicants will be difficult to detect.

Values of the contribution of group to the average offer rate range between 0 and 1. The closer the value is to 1 the greater the contribution a group makes to its own average offer rate.

This statistic is only reported for 18 year olds.

Placed June deadline applicants

An applicant who has been placed for entry into higher education at the provider through a June deadline application.

Placed June deadline applicants per 10,000 population

The number of UK domiciled 18 year old placed June deadline applicants at the provider divided by the number of UK 18 year olds in the population, multiplied by 10,000. This gives the number of 18 year olds, for every 10,000 in the population, that were placed at the provider through one of their June deadline applications. It is an alternative way of expressing the entry rate to a provider, but for placed June deadline applicants only. By referencing the underlying population this statistic shows how the number of placed June deadline applicants is changing in relation to the available pool of potential 18 year old applicants and so gives the chance that somebody from the group will be placed at a provider through a June deadline application.

This statistic is only reported for 18 year olds.

June deadline applications

An application (or choice) to a course in higher education to the provider that is made by the June 30 deadline. Each applicant can make up to five choices this way. The number of June deadline applications does not include choices made through the following routes: Clearing, Extra, Adjustment and RPAs. Applications made to October deadline courses received after the October deadline are not included in these statistics.

June deadline applicants

The number of applicants that made at least one application to the provider by the June 30 deadline.

June deadline applicants per 10,000 population

The number of UK domiciled 18 year old June deadline applicants to the provider divided by the number of UK 18 year olds in the population, multiplied by 10,000. This gives the number of 18 year olds, for every 10,000 in the population, who applied by the June 30 deadline. It is equivalent to the application rate. By referencing the underlying population this statistic shows how the number of June deadline applicants is changing in relation to the available pool of potential 18 year old applicants and so gives the chance that somebody from the group will apply to a provider by the June 30 deadline.

This statistic is only reported for 18 year olds.

Offers

An offer is defined as a provider's decision in response to an application to offer a place to an applicant, often subject to the applicant satisfying academic and/or other criteria, via a June deadline application (i.e. does not cover choices made through the following routes: Clearing, Extra, Adjustment and RPAs).

Offer rate

The number of offers made divided by the number of June deadline applications. This gives the proportion of all June deadline applications to the provider that received an offer.

Percentage point difference between offer rate and average offer rate

The offer rate minus the average offer rate.

The percentage point difference can be compared to the expected range of statistical variation resulting from the calculation of the average offer rate using the Average Offer Rate Lookup Table. Where the value of the percentage point difference lies outside of this range, the percentage point difference may be considered to represent a real difference between the offer rate and the average offer rate.

Other definitions

Age

This analysis uses country-specific age definitions that align with the cut off points for school and college cohorts within the different administrations of the UK. For England and Wales, ages are defined on the 31 August, for Northern Ireland on the 1 July and for Scotland on the 28 February the following year. Defining ages in this way matches the assignment of children to school cohorts. For applicants outside of the UK a cohort cut off of 31 August has been used.

Provider

A higher education provider - a university or college.

UK domiciled

Declared area of permanent residence within England, Northern Ireland, Scotland and Wales. Applicants from the Channel Islands and Isle of Man are not included.