

H36 University of Hertfordshire

Cycle years: 2011 - 2016

Cycle Reference Point: End of Cycle

Applicant coverage: UK domiciled

Reporting groups: Sex, POLAR3, ethnic group

Applicant statistics: June deadline applicants, placed June deadline applicants, all placed applicants, June deadline applicants per 10,000 population, placed June deadline applicants per 10,000 population, all placed applicants per 10,000 population

Application statistics: June deadline applications, offers, offer rate, average offer rate, percentage point difference between offer rate and average offer rate, contribution of group to the average offer rate

Non-disclosure controls: To avoid the disclosure of information about any individual the following measures are taken

- Applicants, placed applicants, applications and offers are rounded to the nearest 5.
- Applicants/placed applicants per 10,000 population figures are reported as 0 if the applicant/placed applicant figures are rounded to 0.
- All statistics related to the offer rate are not reported when the number of applications for a group is less than 10. The percentage point difference between the offer rate and the average offer rate is not reported when the number of applications for a group is less than 50.
- Offer rates are reported as 0% if there are fewer than 5 offers, and 100% if the number of offers is within 5 of the number of applications. When the offer rate is reported as 0% or 100%, it is reported in italics.

Contents:

18 year old applicants:	P.1
18 year old applications:	P.2
18 year old applicants by sex:	P.3
18 year old applications by sex:	P.4
18 year old applicants by POLAR3 quintile:	P.7
18 year old applications by POLAR3 quintile:	P.8
18 year old applicants by ethnic group:	P.11
18 year old applications by ethnic group:	P.12
Applicants (all ages):	P.15
Applications (all ages):	P.16
Applicants (all ages) by sex:	P.17
Applications (all ages) by sex:	P.18
Applicants (all ages) by POLAR3 quintile:	P.19
Applications (all ages) by POLAR3 quintile:	P.20
Applicants (all ages) by ethnic group:	P.21
Applications (all ages) by ethnic group:	P.22

P.1 18 year old applicants

Statistic	2011	2012	2013	2014	2015	2016
June deadline applicants	11,810	12,365	11,845	11,190	12,825	12,155
Placed June deadline applicants	1,885	1,685	1,860	1,760	2,010	1,865
All placed applicants	2,610	2,100	2,275	2,360	2,595	2,485
June deadline applicants per 10,000 population	153.4	159.8	155.6	148.6	167.4	162.2
Placed June deadline applicants per 10,000	24.5	21.8	24.5	23.4	26.2	24.9
All placed applicants per 10,000 population	33.9	27.2	29.9	31.4	33.9	33.1

P.2 18 year old applications

Statistic	2011	2012	2013	2014	2015	2016
June deadline applications	12,665	13,115	12,480	11,760	13,415	12,685
Offers	10,005	10,315	9,775	8,985	10,595	10,005
Offer rate	79.0%	78.6%	78.3%	76.4%	79.0%	78.9%

P.3 18 year old applicants by sex

Statistic	Sex	2011	2012	2013	2014	2015	2016
June deadline applicants	Men	5,565	5,785	5,490	5,065	5,645	5,365
	Women	6,245	6,580	6,355	6,130	7,180	6,790
Placed June deadline applicants	Men	890	795	910	820	915	800
	Women	1,000	890	955	940	1,095	1,065
All placed applicants	Men	1,250	1,000	1,110	1,085	1,185	1,075
	Women	1,360	1,100	1,165	1,280	1,410	1,405
June deadline applicants per 10,000 population	Men	141.5	145.8	140.6	130.8	143.9	139.7
	Women	165.8	174.6	171.4	167.4	192.1	185.8
Placed June deadline applicants per 10,000 population	Men	22.6	20.1	23.3	21.2	23.3	20.9
	Women	26.5	23.6	25.7	25.7	29.3	29.2
All placed applicants per 10,000 population	Men	31.8	25.3	28.5	28.0	30.2	28.0
	Women	36.1	29.2	31.4	34.9	37.7	38.5

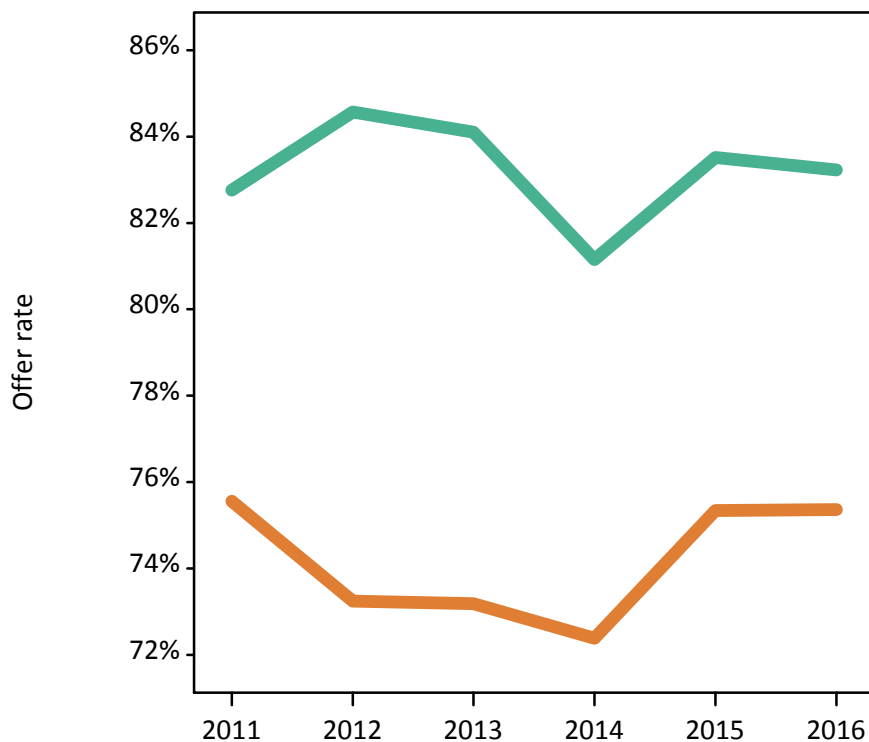
P.4 18 year old applications by sex

Statistic	Sex	2011	2012	2013	2014	2015	2016
June deadline applications	Men	6,055	6,260	5,875	5,400	5,965	5,650
	Women	6,610	6,855	6,605	6,360	7,450	7,035
Offers	Men	5,010	5,295	4,940	4,385	4,980	4,705
	Women	4,995	5,020	4,835	4,605	5,615	5,300
Offer rate	Men	82.8%	84.6%	84.1%	81.2%	83.5%	83.2%
	Women	75.6%	73.2%	73.2%	72.4%	75.3%	75.4%
Average offer rate	Men	83.4%	84.8%	84.8%	82.2%	84.4%	84.1%
	Women	75.0%	73.1%	72.6%	71.5%	74.6%	74.7%
Percentage point difference between offer rate and average offer rate	Men	-0.6	-0.2	-0.7	-1.1	-0.9	-0.9
	Women	0.5	0.2	0.6	0.9	0.7	0.7
Contribution of group to the average offer rate	Men	0.642	0.657	0.657	0.651	0.633	0.633
	Women	0.672	0.687	0.695	0.704	0.706	0.705

P.5 18 year old offer rate by sex

Note: The line for a group is not plotted when that group made fewer than 10 applications in any of the years from 2011-2016.

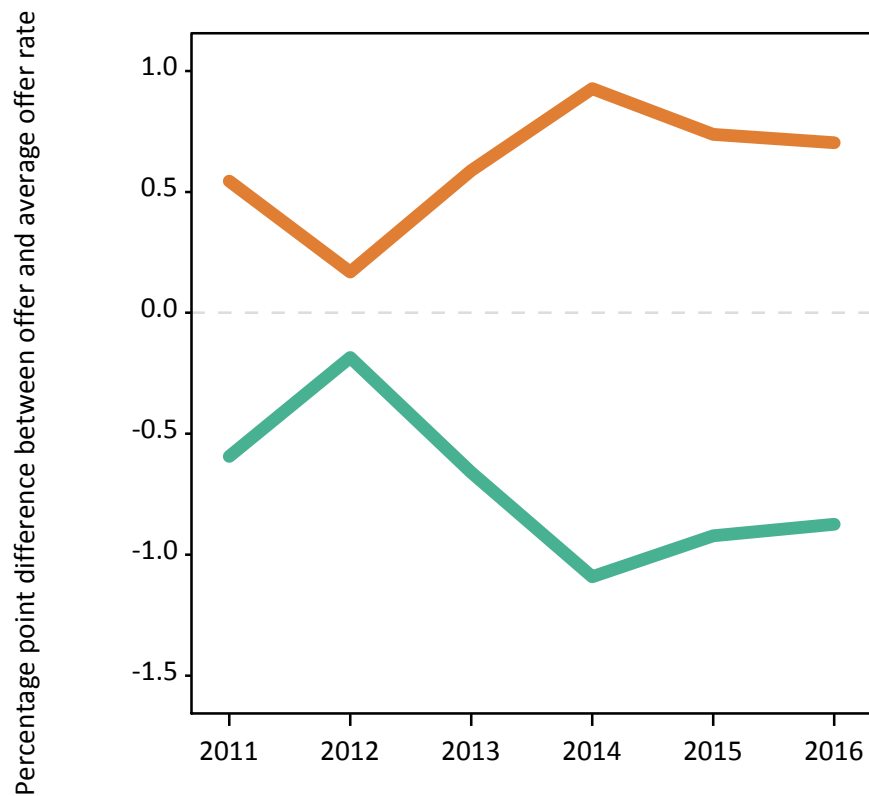
Men
Women



P.6 Percentage point difference between 18 year old offer rate and average offer rate by sex

Note: The line for a group is not plotted when that group made fewer than 50 applications in any of the years from 2011-2016.

Men
Women



P.7 18 year old applicants by POLAR3 quintile

Statistic	POLAR3 quintile	2011	2012	2013	2014	2015	2016
June deadline applicants	Quintile 1	860	1,010	915	960	1,105	1,080
	Quintile 2	1,760	1,840	1,765	1,750	1,940	1,875
	Quintile 3	2,750	2,885	2,895	2,740	3,135	2,990
	Quintile 4	3,060	3,125	3,020	2,815	3,265	3,125
	Quintile 5	3,365	3,490	3,230	2,910	3,345	3,030
Placed June deadline applicants	Quintile 1	135	140	145	130	180	155
	Quintile 2	300	260	290	265	300	305
	Quintile 3	425	405	465	440	520	465
	Quintile 4	510	435	485	470	490	515
	Quintile 5	515	440	480	455	510	415
All placed applicants	Quintile 1	170	165	165	165	220	195
	Quintile 2	400	315	330	335	365	395
	Quintile 3	570	515	570	575	675	630
	Quintile 4	690	530	590	595	630	675
	Quintile 5	775	570	620	690	705	585
June deadline applicants per 10,000 population	Quintile 1	59.8	71.0	65.8	69.1	79.0	80.1
	Quintile 2	117.1	122.8	119.9	119.5	130.5	129.5
	Quintile 3	178.8	186.7	189.7	182.0	204.2	198.8
	Quintile 4	195.4	197.0	193.0	182.6	208.5	202.3
	Quintile 5	203.2	207.6	195.4	178.4	199.9	183.5
Placed June deadline applicants per 10,000 population	Quintile 1	9.3	9.9	10.3	9.2	12.9	11.5
	Quintile 2	20.1	17.3	19.5	18.0	20.1	21.2
	Quintile 3	27.5	26.3	30.5	29.2	33.9	30.9
	Quintile 4	32.6	27.4	30.9	30.5	31.4	33.4
	Quintile 5	31.2	26.3	29.0	28.0	30.5	25.2
All placed applicants per 10,000 population	Quintile 1	11.7	11.7	11.9	11.8	15.6	14.4
	Quintile 2	26.6	20.9	22.3	22.8	24.7	27.2
	Quintile 3	36.9	33.4	37.2	38.3	43.9	41.8
	Quintile 4	44.1	33.3	37.6	38.7	40.1	43.7
	Quintile 5	46.9	34.0	37.6	42.2	42.1	35.3

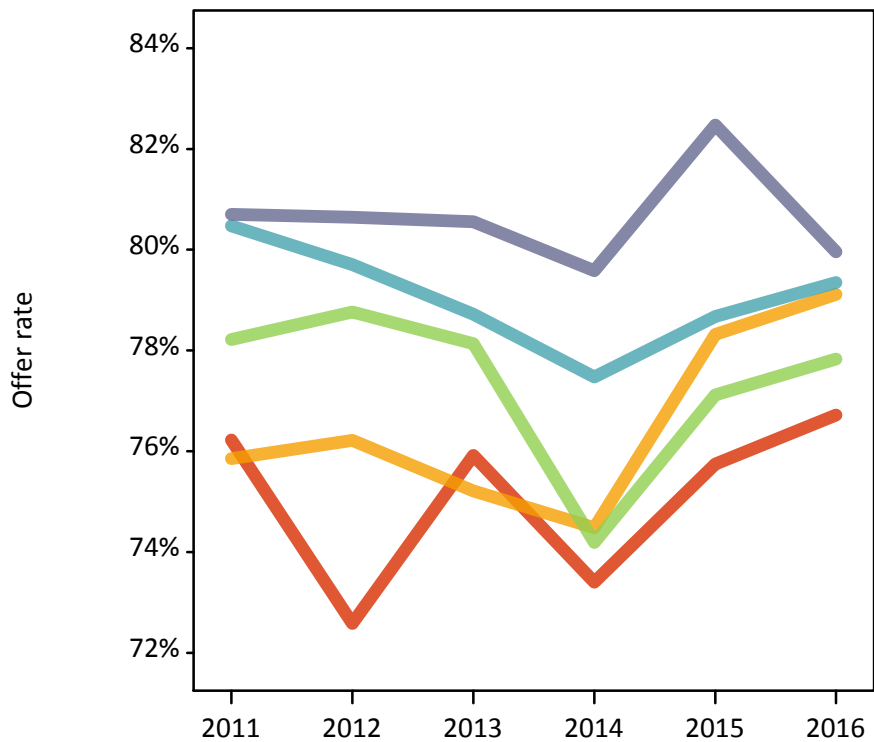
P.8 18 year old applications by POLAR3 quintile

Statistic	POLAR3 quintile	2011	2012	2013	2014	2015	2016
June deadline applications	Quintile 1	920	1,065	950	985	1,140	1,120
	Quintile 2	1,925	1,950	1,885	1,840	2,055	1,990
	Quintile 3	2,945	3,040	3,055	2,860	3,280	3,110
	Quintile 4	3,285	3,355	3,170	2,970	3,405	3,275
	Quintile 5	3,570	3,685	3,400	3,090	3,490	3,135
Offers	Quintile 1	700	775	720	725	865	860
	Quintile 2	1,460	1,485	1,415	1,370	1,610	1,575
	Quintile 3	2,305	2,395	2,385	2,120	2,530	2,420
	Quintile 4	2,640	2,675	2,495	2,300	2,680	2,595
	Quintile 5	2,880	2,970	2,740	2,460	2,880	2,505
Offer rate	Quintile 1	76.2%	72.6%	75.9%	73.4%	75.7%	76.7%
	Quintile 2	75.9%	76.2%	75.2%	74.5%	78.3%	79.1%
	Quintile 3	78.2%	78.8%	78.1%	74.2%	77.1%	77.8%
	Quintile 4	80.5%	79.7%	78.7%	77.5%	78.7%	79.3%
	Quintile 5	80.7%	80.6%	80.6%	79.6%	82.5%	80.0%
Average offer rate	Quintile 1	77.1%	75.1%	76.0%	72.4%	77.7%	76.7%
	Quintile 2	77.2%	75.8%	76.7%	74.5%	78.4%	78.2%
	Quintile 3	77.5%	79.3%	77.7%	75.7%	77.7%	78.2%
	Quintile 4	80.0%	79.4%	78.5%	77.0%	79.0%	79.3%
	Quintile 5	80.8%	79.9%	80.3%	78.9%	80.9%	80.2%
Percentage point difference between offer rate and average offer rate	Quintile 1	-0.9	-2.6	-0.1	1.0	-1.9	0.0
	Quintile 2	-1.3	0.4	-1.5	0.0	-0.1	0.9
	Quintile 3	0.7	-0.5	0.4	-1.6	-0.6	-0.4
	Quintile 4	0.5	0.3	0.2	0.4	-0.3	0.0
	Quintile 5	-0.1	0.7	0.2	0.7	1.6	-0.2
Contribution of group to the average offer rate	Quintile 1	0.150	0.150	0.148	0.158	0.156	0.161
	Quintile 2	0.221	0.211	0.218	0.219	0.212	0.221
	Quintile 3	0.294	0.294	0.304	0.302	0.299	0.302
	Quintile 4	0.315	0.310	0.311	0.307	0.305	0.309
	Quintile 5	0.341	0.339	0.333	0.330	0.320	0.314

P.9 18 year old offer rate by POLAR3 quintile

Note: The line for a group is not plotted when that group made fewer than 10 applications in any of the years from 2011-2016.

- Quintile 1
- Quintile 2
- Quintile 3
- Quintile 4
- Quintile 5



P.10 Percentage point difference between 18 year old offer rate and average offer rate by POLAR3 quintile

Note: The line for a group is not plotted when that group made fewer than 50 applications in any of the years from 2011-2016.

- Quintile 1
- Quintile 2
- Quintile 3
- Quintile 4
- Quintile 5



P.11 18 year old applicants by ethnic group

Statistic	Ethnic group	2011	2012	2013	2014	2015	2016
June deadline applicants	Asian	2,220	2,425	2,340	2,260	2,665	2,660
	Black	1,855	1,795	1,920	1,850	2,260	1,990
	Mixed	540	540	510	560	690	600
	White	6,790	7,165	6,675	6,020	6,635	6,355
	Other	345	365	340	435	485	460
Placed June deadline applicants	Asian	325	315	360	370	445	380
	Black	245	215	240	250	330	295
	Mixed	85	70	85	95	110	100
	White	1,150	1,025	1,120	950	1,030	980
	Other	70	55	45	85	80	90
All placed applicants	Asian	555	430	495	585	640	570
	Black	365	295	320	360	455	425
	Mixed	120	80	105	130	140	125
	White	1,450	1,205	1,285	1,145	1,240	1,215
	Other	100	75	65	130	110	120
June deadline applicants per 10,000 population	Asian	351.9	374.8	355.1	333.5	376.3	369.6
	Black	678.9	637.4	647.4	611.0	709.7	635.6
	Mixed	223.8	208.1	189.4	194.0	223.1	190.4
	White	104.9	111.0	106.1	97.6	106.5	105.0
	Other	423.5	414.8	375.0	467.4	502.1	463.3
Placed June deadline applicants per 10,000 population	Asian	51.4	48.3	54.7	54.3	62.9	53.1
	Black	90.0	76.3	81.5	82.1	104.3	94.6
	Mixed	35.1	26.1	32.2	33.7	35.7	31.5
	White	17.8	15.9	17.8	15.4	16.5	16.2
	Other	84.0	63.3	51.8	92.4	80.9	89.6
All placed applicants per 10,000 population	Asian	87.9	66.1	75.2	86.6	90.1	79.5
	Black	134.2	105.5	107.1	118.4	142.9	135.8
	Mixed	49.5	31.5	38.5	45.2	45.4	40.4
	White	22.4	18.7	20.4	18.6	19.9	20.1
	Other	125.9	83.6	73.9	140.7	113.1	120.9

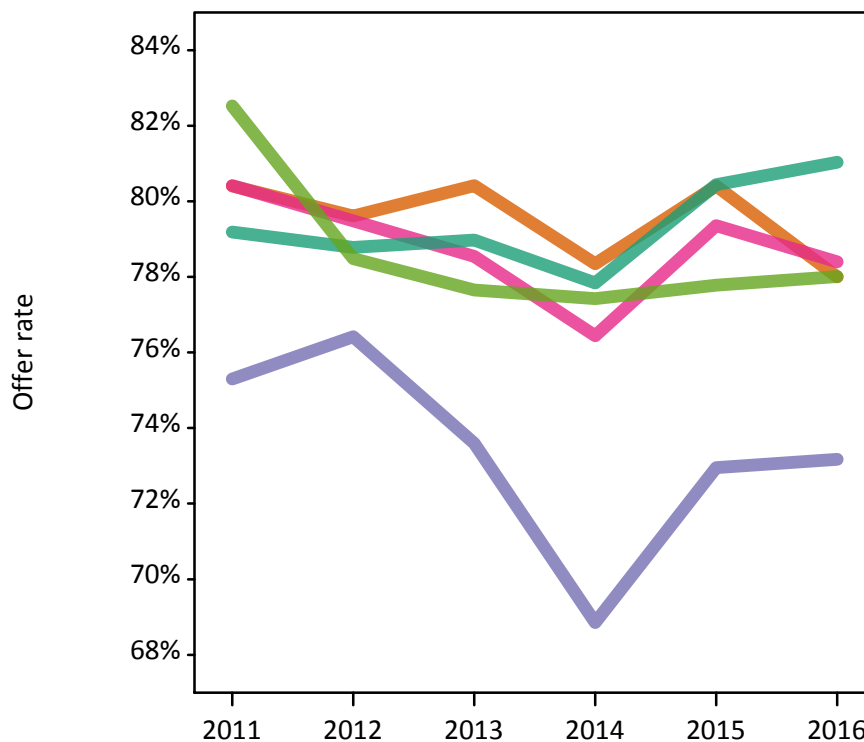
P.12 18 year old applications by ethnic group

Statistic	Ethnic group	2011	2012	2013	2014	2015	2016
June deadline applications	Asian	2,395	2,545	2,465	2,375	2,785	2,780
	Black	1,915	1,850	1,975	1,895	2,310	2,025
	Mixed	580	580	535	575	715	625
	White	7,340	7,670	7,100	6,375	6,990	6,690
	Other	370	395	350	475	505	475
Offers	Asian	1,925	2,025	1,985	1,860	2,240	2,165
	Black	1,440	1,415	1,450	1,305	1,685	1,480
	Mixed	470	460	420	440	570	490
	White	5,810	6,045	5,605	4,965	5,625	5,420
	Other	305	310	270	365	390	370
Offer rate	Asian	80.4%	79.6%	80.4%	78.3%	80.4%	78.0%
	Black	75.3%	76.4%	73.6%	68.8%	73.0%	73.2%
	Mixed	80.4%	79.5%	78.5%	76.4%	79.4%	78.4%
	White	79.2%	78.8%	79.0%	77.8%	80.4%	81.0%
	Other	82.5%	78.5%	77.7%	77.4%	77.8%	78.0%
Average offer rate	Asian	81.2%	80.1%	80.5%	79.5%	80.6%	78.6%
	Black	76.7%	77.8%	76.1%	71.1%	76.0%	76.0%
	Mixed	79.8%	80.4%	78.7%	76.4%	79.8%	80.6%
	White	78.6%	78.2%	78.1%	76.6%	79.3%	79.6%
	Other	82.0%	78.9%	78.2%	79.1%	77.5%	79.8%
Percentage point difference between offer rate and average offer rate	Asian	-0.8	-0.4	-0.1	-1.1	-0.2	-0.6
	Black	-1.4	-1.4	-2.5	-2.2	-3.1	-2.8
	Mixed	0.6	-0.9	-0.2	0.1	-0.4	-2.2
	White	0.6	0.6	0.8	1.2	1.1	1.5
	Other	0.5	-0.4	-0.6	-1.7	0.3	-1.8
Contribution of group to the average offer rate	Asian	0.326	0.326	0.329	0.308	0.324	0.341
	Black	0.258	0.244	0.260	0.256	0.258	0.252
	Mixed	0.120	0.109	0.115	0.131	0.125	0.120
	White	0.674	0.672	0.661	0.627	0.610	0.624
	Other	0.105	0.117	0.099	0.125	0.107	0.099

P.13 18 year old offer rate by ethnic group

Note: The line for a group is not plotted when that group made fewer than 10 applications in any of the years from 2011-2016.

- Asian
- Black
- Mixed
- White
- Other



P.14 Percentage point difference between 18 year old offer rate and average offer rate by ethnic group

Note: The line for a group is not plotted when that group made fewer than 50 applications in any of the years from 2011-2016.

- Asian
- Black
- Mixed
- White
- Other



P.15 Applicants (all ages)

Statistic	2011	2012	2013	2014	2015	2016
June deadline applicants	25,885	25,895	25,670	25,355	27,340	25,960
Placed June deadline applicants	3,910	3,505	3,720	3,715	4,010	3,780
All placed applicants	5,285	4,445	4,645	5,120	5,410	5,275

P.16 Applications (all ages)

Statistic	2011	2012	2013	2014	2015	2016
June deadline applications	28,520	28,045	27,510	27,090	28,990	27,370
Offers	17,625	17,795	16,995	16,100	18,530	17,200
Offer rate	61.8%	63.5%	61.8%	59.4%	63.9%	62.9%

P.17 Applicants (all ages) by sex

Statistic	Sex	2011	2012	2013	2014	2015	2016
June deadline applicants	Men	11,965	11,945	11,590	11,210	12,035	11,085
	Women	13,920	13,950	14,075	14,145	15,305	14,875
Placed June deadline applicants	Men	1,780	1,610	1,810	1,765	1,845	1,570
	Women	2,130	1,895	1,910	1,950	2,165	2,210
All placed applicants	Men	2,465	2,070	2,265	2,415	2,495	2,300
	Women	2,820	2,380	2,380	2,710	2,915	2,980

P.18 Applications (all ages) by sex

Statistic	Sex	2011	2012	2013	2014	2015	2016
June deadline applications	Men	13,355	13,180	12,620	12,175	12,925	11,780
	Women	15,165	14,865	14,890	14,915	16,065	15,585
Offers	Men	8,925	9,315	8,795	8,110	9,115	8,135
	Women	8,700	8,480	8,195	7,990	9,415	9,070
Offer rate	Men	66.8%	70.7%	69.7%	66.6%	70.5%	69.0%
	Women	57.4%	57.1%	55.0%	53.6%	58.6%	58.2%

P.19 Applicants (all ages) by POLAR3 quintile

Statistic	POLAR3 quintile	2011	2012	2013	2014	2015	2016
June deadline applicants	Quintile 1	1,955	2,115	2,170	2,285	2,425	2,335
	Quintile 2	3,775	3,790	3,820	3,845	4,160	3,935
	Quintile 3	6,300	6,480	6,395	6,375	6,960	6,590
	Quintile 4	6,480	6,320	6,340	6,195	6,705	6,520
	Quintile 5	7,330	7,140	6,890	6,590	7,010	6,440
Placed June deadline applicants	Quintile 1	275	270	290	290	345	310
	Quintile 2	625	535	570	570	610	590
	Quintile 3	885	865	890	910	1,035	945
	Quintile 4	1,005	840	955	930	960	965
	Quintile 5	1,115	985	1,005	1,005	1,055	945
All placed applicants	Quintile 1	355	320	345	370	435	410
	Quintile 2	805	665	685	740	800	780
	Quintile 3	1,175	1,090	1,115	1,280	1,380	1,345
	Quintile 4	1,320	1,080	1,175	1,245	1,285	1,330
	Quintile 5	1,625	1,285	1,315	1,475	1,500	1,375

P.20 Applications (all ages) by POLAR3 quintile

Statistic	POLAR3 quintile	2011	2012	2013	2014	2015	2016
June deadline applications	Quintile 1	2,155	2,265	2,290	2,400	2,545	2,460
	Quintile 2	4,280	4,160	4,165	4,165	4,490	4,200
	Quintile 3	6,920	6,975	6,830	6,790	7,345	6,965
	Quintile 4	7,120	6,855	6,765	6,595	7,095	6,875
	Quintile 5	7,990	7,740	7,400	7,075	7,430	6,725
Offers	Quintile 1	1,240	1,300	1,315	1,315	1,515	1,485
	Quintile 2	2,530	2,555	2,440	2,400	2,775	2,595
	Quintile 3	4,165	4,330	4,125	3,890	4,530	4,240
	Quintile 4	4,525	4,415	4,260	4,040	4,610	4,405
	Quintile 5	5,140	5,165	4,820	4,420	5,055	4,390
Offer rate	Quintile 1	57.4%	57.5%	57.4%	54.9%	59.6%	60.5%
	Quintile 2	59.1%	61.4%	58.6%	57.6%	61.8%	61.8%
	Quintile 3	60.2%	62.1%	60.4%	57.3%	61.7%	60.9%
	Quintile 4	63.6%	64.4%	63.0%	61.3%	65.0%	64.1%
	Quintile 5	64.3%	66.7%	65.1%	62.5%	68.1%	65.3%

P.21 Applicants (all ages) by ethnic group

Statistic	Ethnic group	2011	2012	2013	2014	2015	2016
June deadline applicants	Asian	4,920	5,095	5,025	4,970	5,695	5,530
	Black	5,815	5,800	5,915	5,930	6,420	6,245
	Mixed	1,285	1,215	1,225	1,270	1,455	1,340
	White	12,870	12,670	12,420	11,970	12,385	11,475
	Other	785	905	870	1,020	1,100	1,075
Placed June deadline applicants	Asian	680	640	700	710	845	735
	Black	615	635	580	640	745	755
	Mixed	180	160	190	195	220	205
	White	2,290	1,905	2,115	1,995	2,010	1,865
	Other	115	135	110	145	150	170
All placed applicants	Asian	1,115	910	980	1,175	1,300	1,180
	Black	915	865	790	965	1,105	1,125
	Mixed	250	200	235	285	300	285
	White	2,795	2,245	2,445	2,410	2,425	2,335
	Other	175	180	160	235	230	275

P.22 Applications (all ages) by ethnic group

Statistic	Ethnic group	2011	2012	2013	2014	2015	2016
June deadline applications	Asian	5,405	5,455	5,320	5,280	6,020	5,770
	Black	6,180	6,160	6,185	6,170	6,675	6,450
	Mixed	1,420	1,325	1,335	1,355	1,535	1,420
	White	14,435	13,890	13,515	12,985	13,280	12,300
	Other	860	980	925	1,085	1,160	1,125
Offers	Asian	3,690	3,755	3,685	3,480	4,145	3,835
	Black	2,945	3,115	2,900	2,725	3,345	3,100
	Mixed	890	855	835	815	1,010	900
	White	9,410	9,285	8,875	8,285	9,110	8,505
	Other	570	640	570	685	740	695
Offer rate	Asian	68.3%	68.8%	69.2%	65.9%	68.8%	66.5%
	Black	47.6%	50.6%	46.9%	44.2%	50.1%	48.1%
	Mixed	62.7%	64.5%	62.6%	60.0%	65.8%	63.3%
	White	65.2%	66.9%	65.7%	63.8%	68.6%	69.1%
	Other	66.2%	65.3%	61.7%	63.3%	63.6%	62.0%

Technical Notes and Definitions

UCAS undergraduate scheme

Adjustment

Adjustment allows applicants who have met and exceeded the terms of their conditional firm offer to seek and find a place at another provider whilst keeping their place at their original firm choice provider.

Clearing

Clearing is a route for applicants that are not placed and holding no offers to find a place on courses with vacancies.

Cycle year

The UCAS application cycle which runs from September to October the following year. For example the 2016 cycle runs from September 2015 through to October 2016.

End of cycle

The point in the cycle to which the numbers in this report refer, and the point at which the cycle is closed such that no more applications or offers can be made, and no more applicants can be placed. Numbers reported at the end of cycle exclude information on a small number of applicants who cancelled during the cycle.

Extra

Applicants who are unsuccessful in obtaining an offer or decline all offers may be eligible to apply through Extra, where they can apply to one further course at a time. Extra operates from 25 February until early July. It provides applicants who are eligible the possibility of obtaining an offer before exam results are published and Clearing starts.

June 30 deadline

The deadline for main scheme applications. Applicants who apply after this date will go directly into Clearing.

Record of Prior Acceptance (RPA)

RPA is an acceptance route used when a provider informs UCAS of applicants it has accepted outside of the normal application process (e.g. individuals who have applied directly to the provider).

Reporting groups

Ethnic group

High level grouping of ethnic origin as declared by the applicant: 'White', 'Black', 'Asian', 'Mixed', 'Other', 'Unknown'. Applicants who declare themselves as 'Unknown' ethnic origin are not reported in these tables, but are included in the associated csv data file.

POLAR3 quintile

Developed by HEFCE, POLAR3 classifies small areas across the UK into five groups according to their level of young participation in Higher Education. Each of these groups represents around 20 per cent of young people and is ranked from Quintile 1 (areas with the lowest young participation rates, considered as the most disadvantaged) to Quintile 5 (highest young participation rates, considered most advantaged). POLAR3 is based on the participation rates of young people between 2005 and 2009 who entered Higher Education between 2005-06 and 2010-11, therefore is most suitable for applicants aged 19 and under. These groups are assigned using the postcode declared by the applicant at the time of their application. If a UK postcode is invalid, considered unsafe for measurement or there is no link to Census geography possible then the applicant is not assigned to a quintile. Applicants with no POLAR3 quintile are not reported.

Sex

Sex as declared by the applicant.

SIMD quintile

Scottish index of multiple deprivation (SIMD) for 2012 identifies small area concentrations of multiple deprivation across all of Scotland, providing a relative measure of deprivation amongst 6505 small areas (data zones) based on 7 socio-economic domains. These small areas are classified into five groups ranked from Quintile 1 (considered the most deprived) to Quintile 5 (considered least deprived), with equal populations in each quintile. Quintiles are assigned using the postcode declared by the applicant, applicants declaring invalid postcodes are classified as 'Not assigned' and are not reported.

SIMD is only defined for applicants domiciled in Scotland, therefore any applicants domiciled outside of Scotland cannot be assigned to an SIMD quintile and so are not reported for this measure.

SIMD is only reported for providers in Scotland. Application and entry rates by SIMD are reported in the 2016 End of Cycle Report and the 2016 cycle January deadline application rate report.

Statistics reported in the tables

All placed applicants

The number of applicants placed for entry into higher education at the provider through one of their choices, including any choices made through Extra, or via Adjustment, Clearing or RPA.

All placed applicants per 10,000 population

The number of total UK domiciled 18 year old placed applicants for entry into higher education at the provider divided by the number of UK 18 year olds in the population, multiplied by 10,000. This gives the number of 18 year olds, for every 10,000 in the population, that were placed at the provider through one of their choices, including any choices made through Extra, or via Adjustment, Clearing or RPA. It is an alternative way of expressing the entry rate to a provider. By referencing the underlying population this statistic shows how the number of placed applicants is changing in relation to the available pool of potential applicants and so gives the chance that somebody from the group will be placed at a provider.

This statistic is only reported for 18 year olds.

Average offer rate

The offer rate that you might expect if the predicted grades and subject choice of applicants were the only factors that influenced whether an applicant was made an offer by the provider. The average offer rate is calculated by dividing applicants according to their specific combination of grades (for A levels the best three predicted grades are used, for BTECs, International Baccalaureate and Scottish Highers and Advanced Highers, predicted grades along with any grades already achieved upon applying are used) and subject choice. For each combination the number of main scheme offers is divided by the number of main scheme applications, to give an overall offer rate. This is then multiplied by the number of applications made by the group for which the average offer rate is being calculated (for example POLAR3 quintile 1), to give an average number of offers for that group. These average number of offers are then added together across all combinations of predicted grade and subject and divided by the number of main scheme applications from the group to give the average offer rate.

The average offer rate does not attempt to control for any other factors that may play a part in the decision to make an offer, such as the subject of the qualifications studied, their relevance to a course, or the grade in each subject; higher numbers of A levels being studied; the exact profile of grades predicted; personal statements; teacher references; interviews; or any other criteria (such as work experience or portfolios) that may be part of the admissions decision.

This statistic is only reported for 18 year olds.

Contribution of group to the average offer rate

The way in which the average offer rate is defined means that the pattern of application and offers of a group (for example POLAR3 quintile 1) will always contribute, in part, to the average offer rate for that group. When this contribution is large, the average offer rate will mainly reflect the patterns for the group, meaning that the value of the average offer rate will be similar to the offer rate, the percentage point difference statistic will be small, and any real difference between the offer rate and what might be expected given the predicted grades and subject choices of the applicants will be difficult to detect.

Values of the contribution of group to the average offer rate range between 0 and 1. The closer the value is to 1 the greater the contribution a group makes to its own average offer rate.

This statistic is only reported for 18 year olds.

Placed June deadline applicants

An applicant who has been placed for entry into higher education at the provider through a June deadline application.

Placed June deadline applicants per 10,000 population

The number of UK domiciled 18 year old placed June deadline applicants at the provider divided by the number of UK 18 year olds in the population, multiplied by 10,000. This gives the number of 18 year olds, for every 10,000 in the population, that were placed at the provider through one of their June deadline applications. It is an alternative way of expressing the entry rate to a provider, but for placed June deadline applicants only. By referencing the underlying population this statistic shows how the number of placed June deadline applicants is changing in relation to the available pool of potential 18 year old applicants and so gives the chance that somebody from the group will be placed at a provider through a June deadline application.

This statistic is only reported for 18 year olds.

June deadline applications

An application (or choice) to a course in higher education to the provider that is made by the June 30 deadline. Each applicant can make up to five choices this way. The number of June deadline applications does not include choices made through the following routes: Clearing, Extra, Adjustment and RPAs. Applications made to October deadline courses received after the October deadline are not included in these statistics.

June deadline applicants

The number of applicants that made at least one application to the provider by the June 30 deadline.

June deadline applicants per 10,000 population

The number of UK domiciled 18 year old June deadline applicants to the provider divided by the number of UK 18 year olds in the population, multiplied by 10,000. This gives the number of 18 year olds, for every 10,000 in the population, who applied by the June 30 deadline. It is equivalent to the application rate. By referencing the underlying population this statistic shows how the number of June deadline applicants is changing in relation to the available pool of potential 18 year old applicants and so gives the chance that somebody from the group will apply to a provider by the June 30 deadline.

This statistic is only reported for 18 year olds.

Offers

An offer is defined as a provider's decision in response to an application to offer a place to an applicant, often subject to the applicant satisfying academic and/or other criteria, via a June deadline application (i.e. does not cover choices made through the following routes: Clearing, Extra, Adjustment and RPAs).

Offer rate

The number of offers made divided by the number of June deadline applications. This gives the proportion of all June deadline applications to the provider that received an offer.

Percentage point difference between offer rate and average offer rate

The offer rate minus the average offer rate.

The percentage point difference can be compared to the expected range of statistical variation resulting from the calculation of the average offer rate using the Average Offer Rate Lookup Table. Where the value of the percentage point difference lies outside of this range, the percentage point difference may be considered to represent a real difference between the offer rate and the average offer rate.

Other definitions

Age

This analysis uses country-specific age definitions that align with the cut off points for school and college cohorts within the different administrations of the UK. For England and Wales, ages are defined on the 31 August, for Northern Ireland on the 1 July and for Scotland on the 28 February the following year. Defining ages in this way matches the assignment of children to school cohorts. For applicants outside of the UK a cohort cut off of 31 August has been used.

Provider

A higher education provider - a university or college.

UK domiciled

Declared area of permanent residence within England, Northern Ireland, Scotland and Wales. Applicants from the Channel Islands and Isle of Man are not included.