

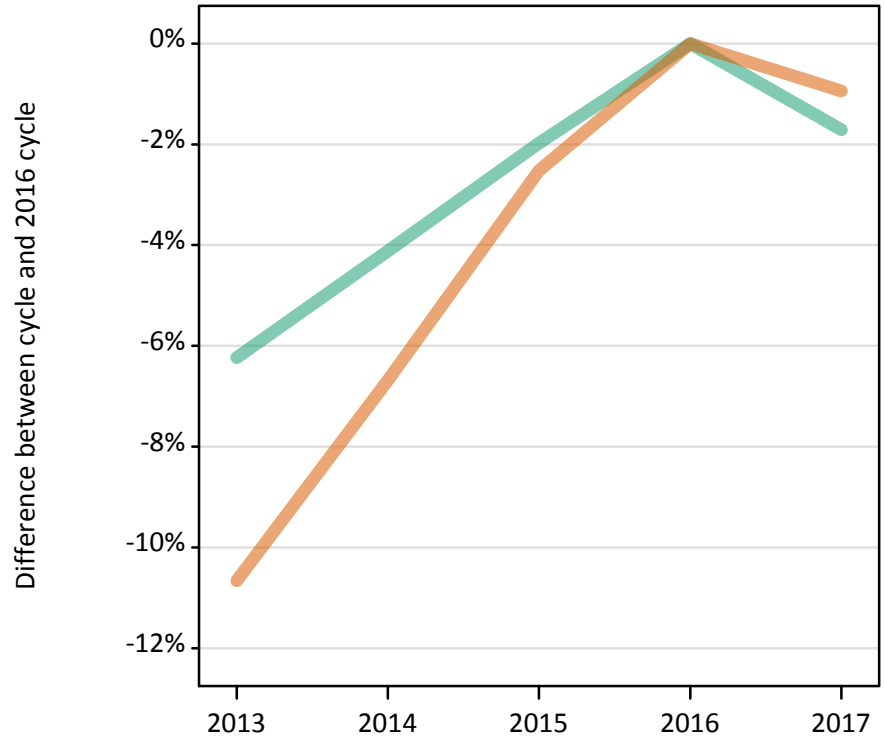
Daily Clearing Analysis: Sex

Analysis at 00:05 on Tuesday 22 August 2017 (5 days after A level results day)

S.1 Placed applicants from all domiciles by sex: 5 days after A level results day

Placed applicants: change relative to 2016 cycle totals

Men
Women



S.2 Placed applicants from all domiciles by sex: 5 days after A level results day

Applicant Status	Sex	2013	2014	2015	2016	2017
Placed	Men	193,120	197,480	201,890	205,960	202,440
	Women	240,100	250,790	261,970	268,750	266,230
	All	433,220	448,280	463,850	474,710	468,670

S.3 Placed applicants from all domiciles by sex: 5 days after A level results day

Placed applicants: change relative to 2016 cycle totals

Applicant Status	Sex	2013	2014	2015	2016	2017
Placed	Men	-6%	-4%	-2%	0%	-2%
	Women	-11%	-7%	-3%	0%	-1%
	All	-9%	-6%	-2%	0%	-1%

S.4 Placed applicants from all domiciles by sex: 5 days after A level results day

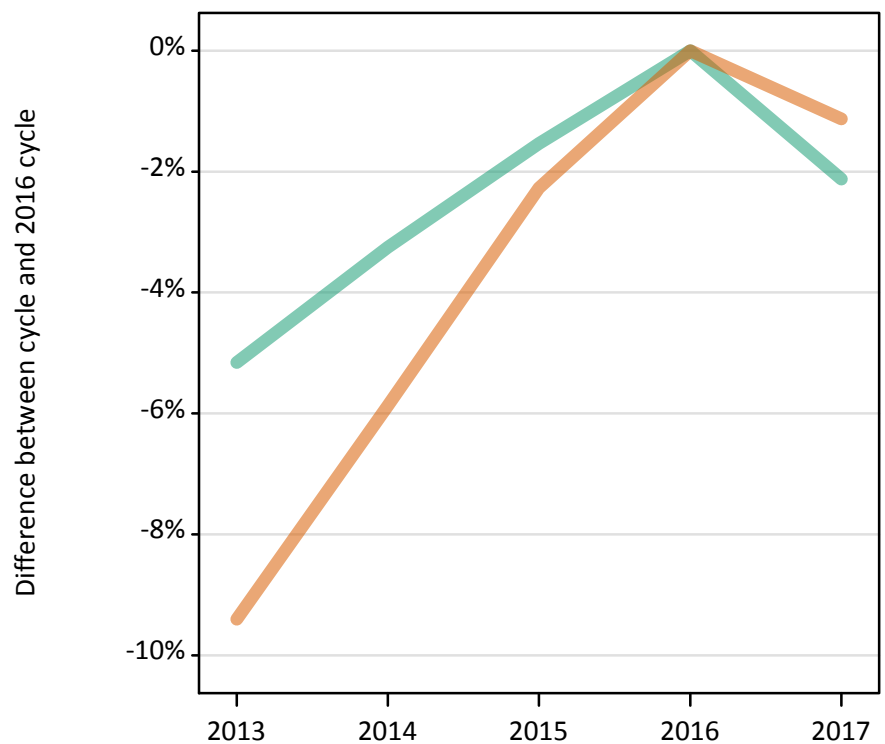
Placed applicants: absolute change relative to 2016 cycle totals

Applicant Status	Sex	2013	2014	2015	2016	2017
Placed	Men	-12,840	-8,470	-4,070	0	-3,520
	Women	-28,650	-17,960	-6,790	0	-2,520
	All	-41,490	-26,430	-10,860	0	-6,040

S.5 Placed applicants from the UK by sex: 5 days after A level results day

Placed applicants: change relative to 2016 cycle totals

Men
Women



S.6 Placed applicants from the UK by sex: 5 days after A level results day

Applicant Status	Sex	2013	2014	2015	2016	2017
Placed	Men	169,850	173,260	176,340	179,090	175,290
	Women	212,680	220,960	229,420	234,750	232,110
	All	382,540	394,220	405,760	413,840	407,400

S.7 Placed applicants from the UK by sex: 5 days after A level results day

Placed applicants: change relative to 2016 cycle totals

Applicant Status	Sex	2013	2014	2015	2016	2017
Placed	Men	-5%	-3%	-2%	0%	-2%
	Women	-9%	-6%	-2%	0%	-1%
	All	-8%	-5%	-2%	0%	-2%

S.8 Placed applicants from the UK by sex: 5 days after A level results day

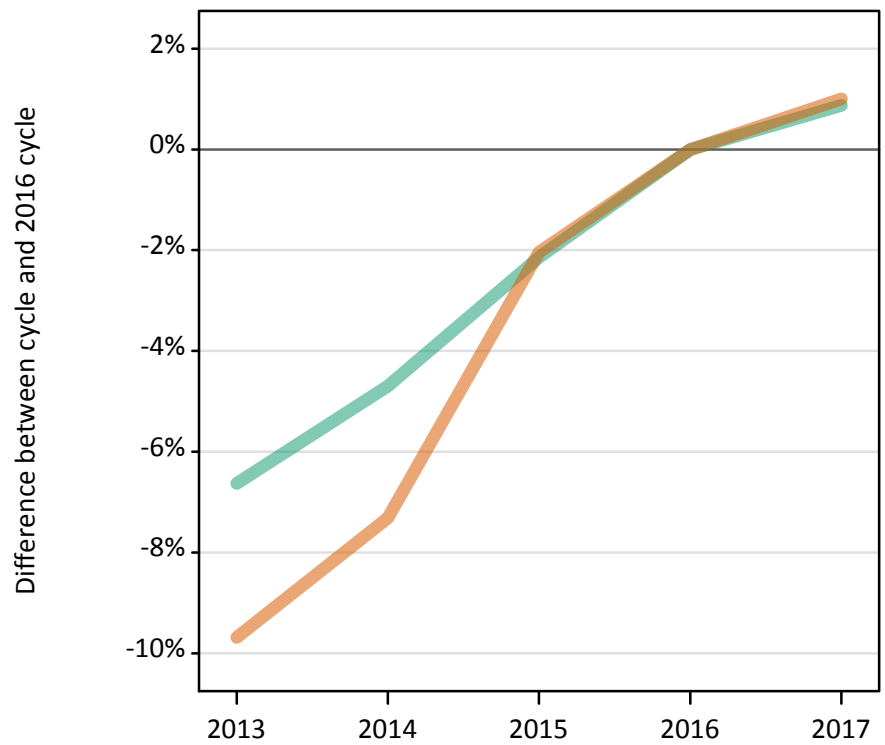
Placed applicants: absolute change relative to 2016 cycle totals

Applicant Status	Sex	2013	2014	2015	2016	2017
Placed	Men	-9,240	-5,830	-2,750	0	-3,800
	Women	-22,070	-13,790	-5,330	0	-2,640
	All	-31,310	-19,620	-8,080	0	-6,440

S.9 Placed 18 year old applicants from the UK by sex: 5 days after A level results day

Placed 18 year old applicants: change relative to 2016 cycle totals

Men
Women



S.10 Placed 18 year old applicants from the UK by sex: 5 days after A level results day

Applicant Status	Sex	2013	2014	2015	2016	2017
Placed	Men	93,960	95,900	98,470	100,630	101,510
	Women	117,330	120,410	127,260	129,910	131,210
	All	211,290	216,300	225,730	230,540	232,720

S.11 Placed 18 year old applicants from the UK by sex: 5 days after A level results day

Placed 18 year old applicants: change relative to 2016 cycle totals

Applicant Status	Sex	2013	2014	2015	2016	2017
Placed	Men	-7%	-5%	-2%	0%	1%
	Women	-10%	-7%	-2%	0%	1%
	All	-8%	-6%	-2%	0%	1%

S.12 Placed 18 year old applicants from the UK by sex: 5 days after A level results day

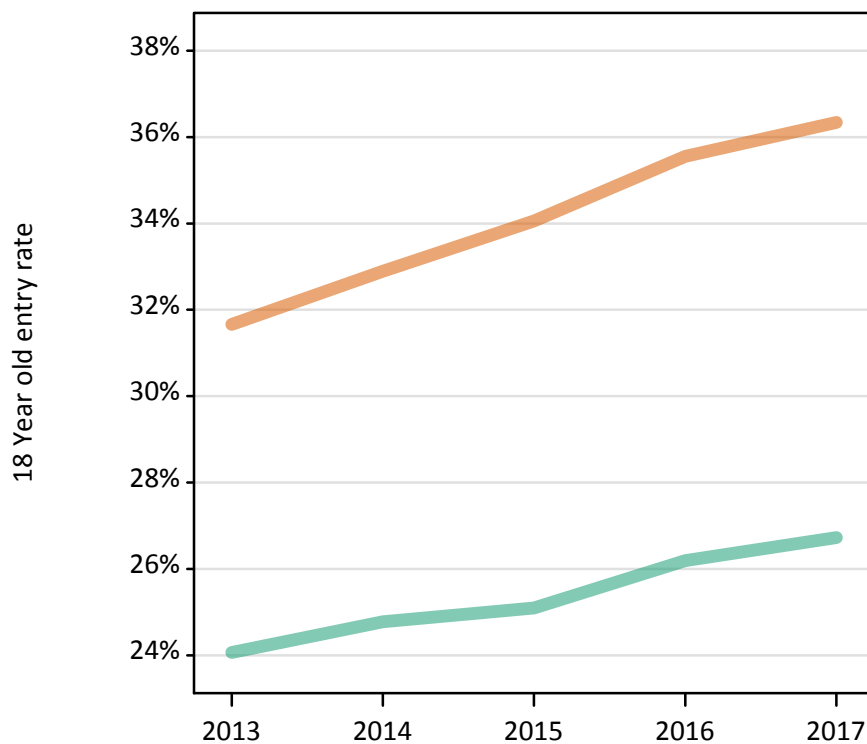
Placed 18 year old applicants: absolute change relative to 2016 cycle totals

Applicant Status	Sex	2013	2014	2015	2016	2017
Placed	Men	-6,670	-4,730	-2,160	0	880
	Women	-12,580	-9,500	-2,650	0	1,300
	All	-19,250	-14,230	-4,810	0	2,180

S.13 Placed 18 year old applicants from the UK by sex: 5 days after A level results day

Placed 18 year old applicants: entry rate

Men
Women



S.14 Placed 18 year old applicants from the UK by sex: 5 days after A level results day

Placed 18 year old applicants: entry rate

Applicant Status	Sex	2013	2014	2015	2016	2017
Placed	Men	24.1%	24.8%	25.1%	26.2%	26.7%
	Women	31.7%	32.9%	34.1%	35.6%	36.3%
	All	27.8%	28.7%	29.5%	30.8%	31.4%

S.15 Placed 18 year old applicants from the UK by sex: 5 days after A level results day

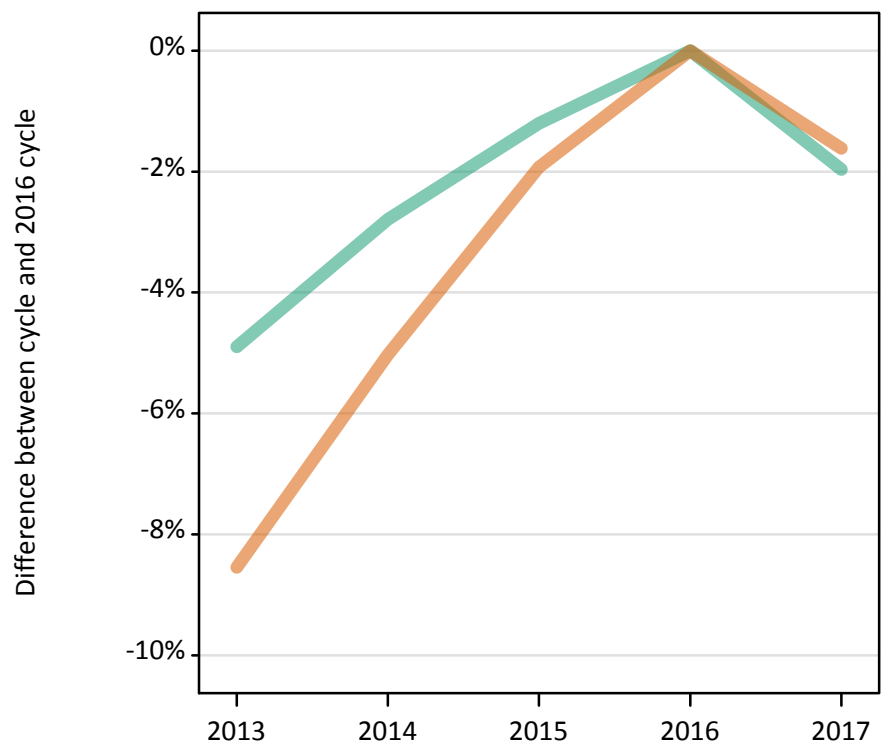
Placed 18 year old applicants: entry rate (indexed to 100 = Men)

Applicant Status	Sex	2013	2014	2015	2016	2017
Placed	Men	100	100	100	100	100
	Women	132	133	136	136	136

S.16 Placed applicants from England by sex: 5 days after A level results day

Placed applicants: change relative to 2016 cycle totals

Men
Women



S.17 Placed applicants from England by sex: 5 days after A level results day

Applicant Status	Sex	2013	2014	2015	2016	2017
Placed	Men	144,850	148,060	150,480	152,310	149,320
	Women	179,890	186,800	192,910	196,700	193,520
	All	324,750	334,870	343,390	349,010	342,840

S.18 Placed applicants from England by sex: 5 days after A level results day

Placed applicants: change relative to 2016 cycle totals

Applicant Status	Sex	2013	2014	2015	2016	2017
Placed	Men	-5%	-3%	-1%	0%	-2%
	Women	-9%	-5%	-2%	0%	-2%
	All	-7%	-4%	-2%	0%	-2%

S.19 Placed applicants from England by sex: 5 days after A level results day

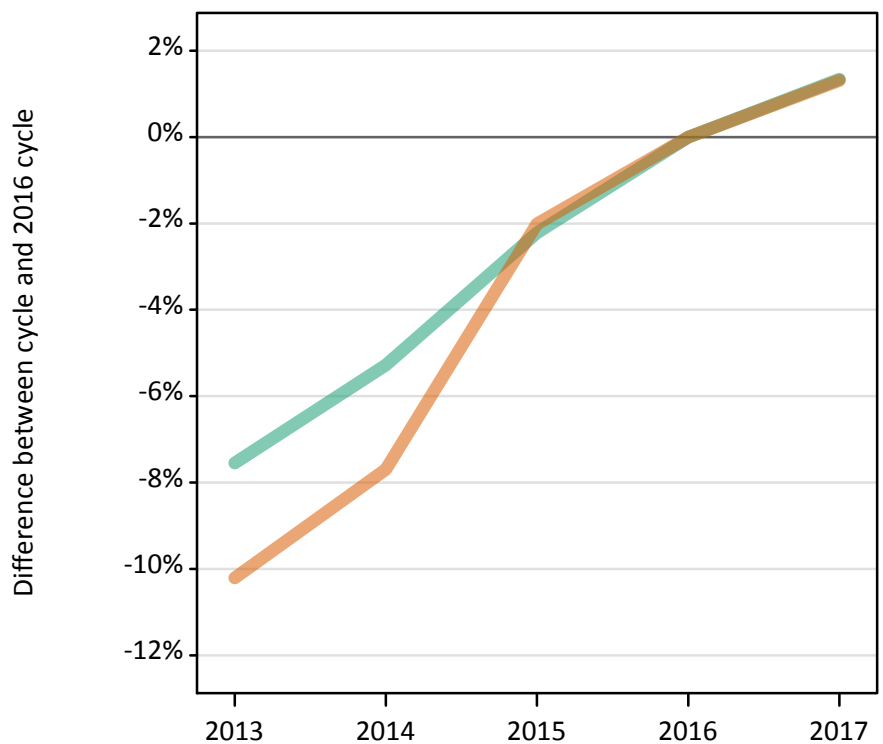
Placed applicants: absolute change relative to 2016 cycle totals

Applicant Status	Sex	2013	2014	2015	2016	2017
Placed	Men	-7,460	-4,250	-1,830	0	-2,990
	Women	-16,810	-9,900	-3,790	0	-3,180
	All	-24,260	-14,150	-5,620	0	-6,170

S.20 Placed 18 year old applicants from England by sex: 5 days after A level results day

Placed 18 year old applicants: change relative to 2016 cycle totals

Men
Women



S.21 Placed 18 year old applicants from England by sex: 5 days after A level results day

Applicant Status	Sex	2013	2014	2015	2016	2017
Placed	Men	80,360	82,330	84,990	86,920	88,090
	Women	99,360	102,140	108,440	110,660	112,110
	All	179,720	184,470	193,430	197,580	200,190

S.22 Placed 18 year old applicants from England by sex: 5 days after A level results day

Placed 18 year old applicants: change relative to 2016 cycle totals

Applicant Status	Sex	2013	2014	2015	2016	2017
Placed	Men	-8%	-5%	-2%	0%	1%
	Women	-10%	-8%	-2%	0%	1%
	All	-9%	-7%	-2%	0%	1%

S.23 Placed 18 year old applicants from England by sex: 5 days after A level results day

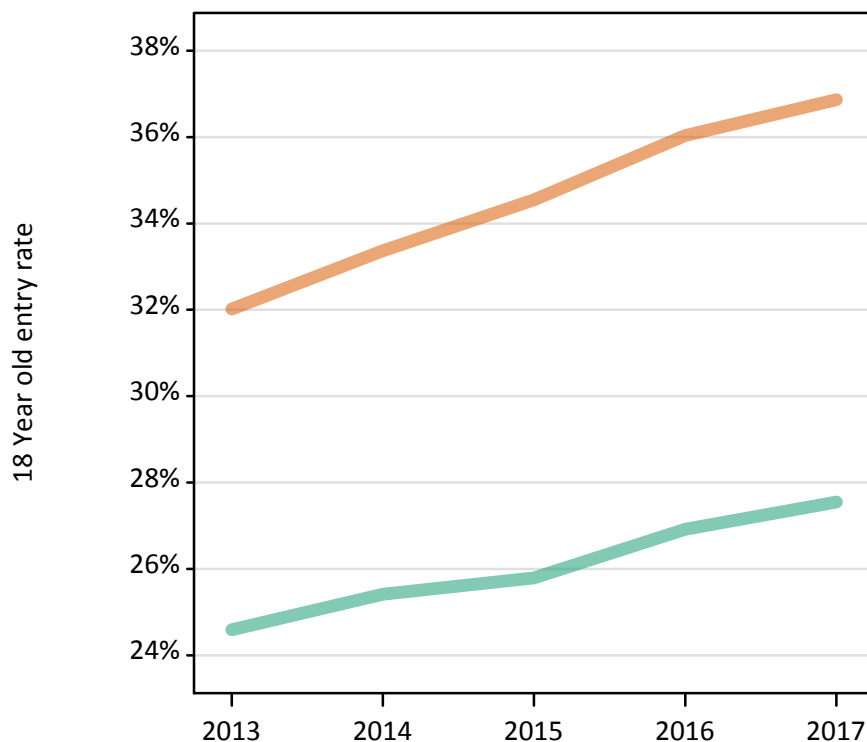
Placed 18 year old applicants: absolute change relative to 2016 cycle totals

Applicant Status	Sex	2013	2014	2015	2016	2017
Placed	Men	-6,560	-4,590	-1,930	0	1,170
	Women	-11,300	-8,520	-2,220	0	1,450
	All	-17,860	-13,110	-4,150	0	2,610

S.24 Placed 18 year old applicants from England by sex: 5 days after A level results day

Placed 18 year old applicants: entry rate

Men
Women



S.25 Placed 18 year old applicants from England by sex: 5 days after A level results day

Placed 18 year old applicants: entry rate

Applicant Status	Sex	2013	2014	2015	2016	2017
Placed	Men	24.6%	25.4%	25.8%	26.9%	27.5%
	Women	32.0%	33.4%	34.5%	36.0%	36.9%
	All	28.2%	29.3%	30.1%	31.4%	32.1%

S.26 Placed 18 year old applicants from England by sex: 5 days after A level results day

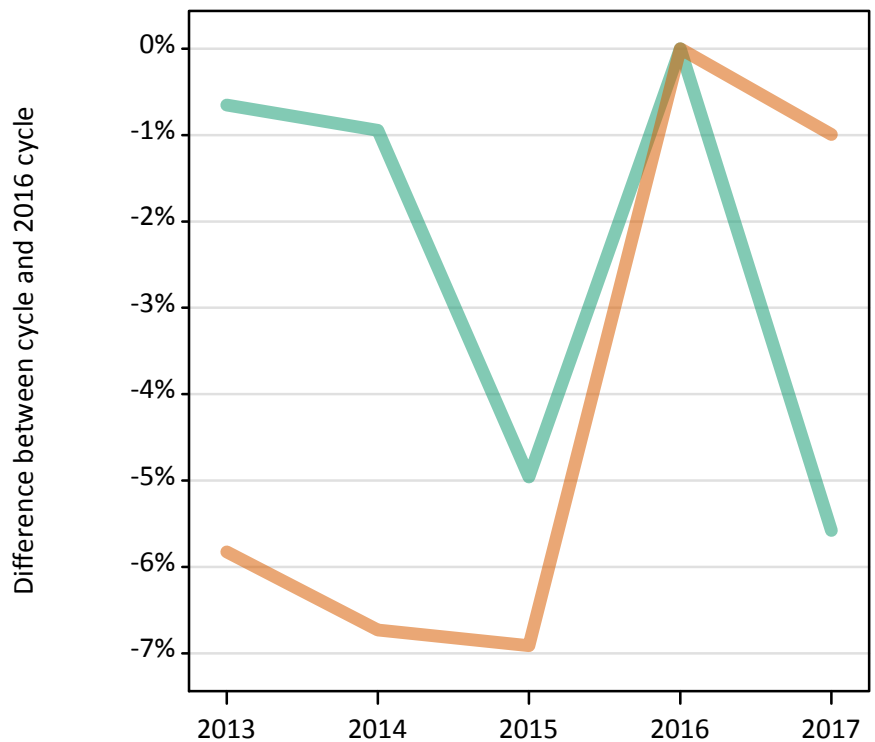
Placed 18 year old applicants: entry rate (indexed to 100 = Men)

Applicant Status	Sex	2013	2014	2015	2016	2017
Placed	Men	100	100	100	100	100
	Women	130	131	134	134	134

S.27 Placed applicants from Northern Ireland by sex: 5 days after A level results day

Placed applicants: change relative to 2016 cycle totals

Men
Women



S.28 Placed applicants from Northern Ireland by sex: 5 days after A level results day

Applicant Status	Sex	2013	2014	2015	2016	2017
Placed	Men	5,790	5,770	5,540	5,830	5,500
	Women	7,210	7,140	7,120	7,650	7,580
	All	13,000	12,910	12,660	13,480	13,080

S.29 Placed applicants from Northern Ireland by sex: 5 days after A level results day

Placed applicants: change relative to 2016 cycle totals

Applicant Status	Sex	2013	2014	2015	2016	2017
Placed	Men	-1%	-1%	-5%	0%	-6%
	Women	-6%	-7%	-7%	0%	-1%
	All	-4%	-4%	-6%	0%	-3%

S.30 Placed applicants from Northern Ireland by sex: 5 days after A level results day

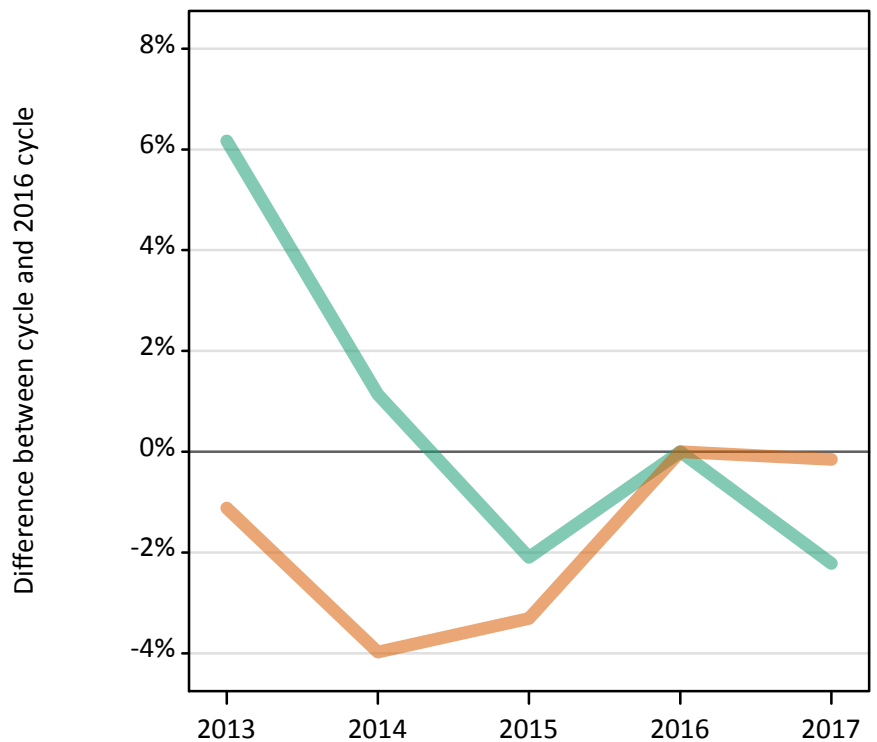
Placed applicants: absolute change relative to 2016 cycle totals

Applicant Status	Sex	2013	2014	2015	2016	2017
Placed	Men	-40	-60	-290	0	-330
	Women	-450	-520	-530	0	-80
	All	-480	-570	-820	0	-400

S.31 Placed 18 year old applicants from Northern Ireland by sex: 5 days after A level results day

Placed 18 year old applicants: change relative to 2016 cycle totals

Men
Women



S.32 Placed 18 year old applicants from Northern Ireland by sex: 5 days after A level results day

Applicant Status	Sex	2013	2014	2015	2016	2017
Placed	Men	3,550	3,380	3,270	3,340	3,270
	Women	4,600	4,470	4,500	4,650	4,640
	All	8,140	7,840	7,770	7,990	7,910

S.33 Placed 18 year old applicants from Northern Ireland by sex: 5 days after A level results day

Placed 18 year old applicants: change relative to 2016 cycle totals

Applicant Status	Sex	2013	2014	2015	2016	2017
Placed	Men	6%	1%	-2%	0%	-2%
	Women	-1%	-4%	-3%	0%	-0%
	All	2%	-2%	-3%	0%	-1%

S.34 Placed 18 year old applicants from Northern Ireland by sex: 5 days after A level results day

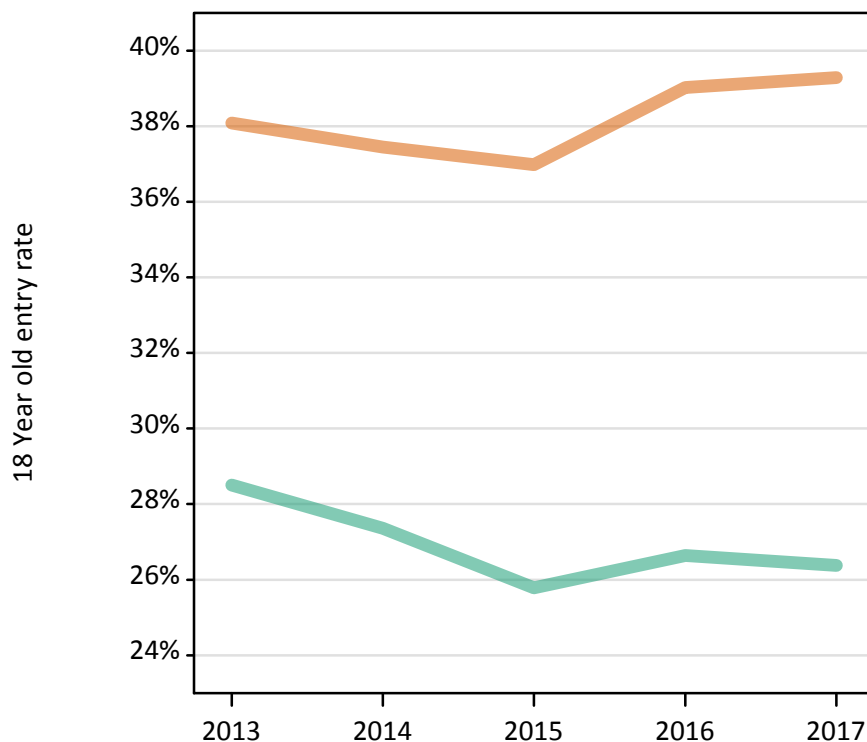
Placed 18 year old applicants: absolute change relative to 2016 cycle totals

Applicant Status	Sex	2013	2014	2015	2016	2017
Placed	Men	210	40	-70	0	-70
	Women	-50	-190	-150	0	-10
	All	150	-150	-220	0	-80

S.35 Placed 18 year old applicants from Northern Ireland by sex: 5 days after A level results day

Placed 18 year old applicants: entry rate

Men
Women



S.36 Placed 18 year old applicants from Northern Ireland by sex: 5 days after A level results day

Placed 18 year old applicants: entry rate

Applicant Status	Sex	2013	2014	2015	2016	2017
Placed	Men	28.5%	27.4%	25.8%	26.6%	26.4%
	Women	38.1%	37.4%	37.0%	39.0%	39.3%
	All	33.2%	32.3%	31.3%	32.7%	32.7%

S.37 Placed 18 year old applicants from Northern Ireland by sex: 5 days after A level results day

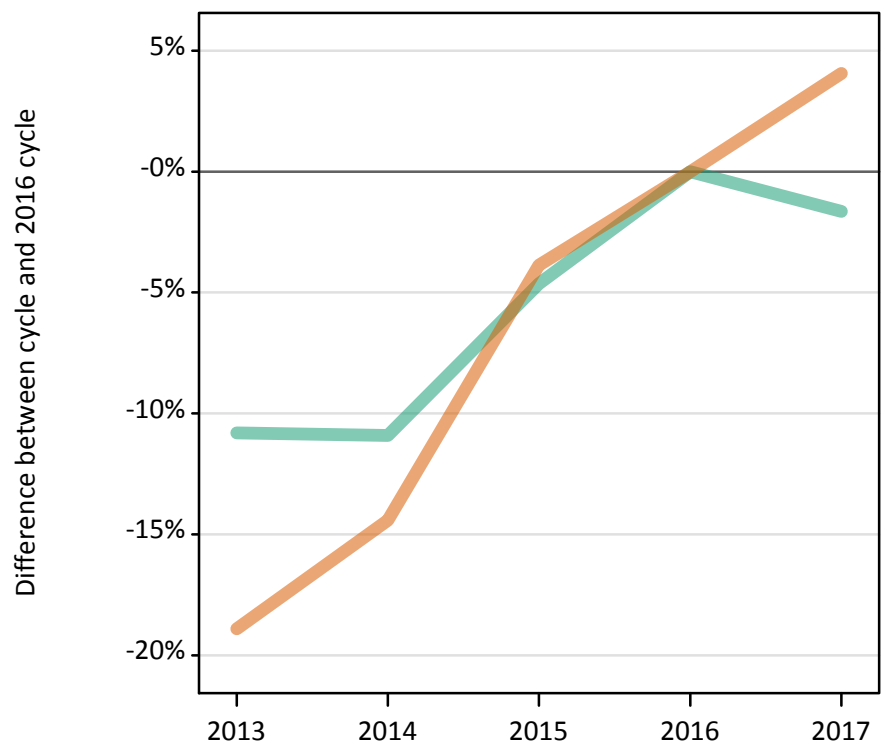
Placed 18 year old applicants: entry rate (indexed to 100 = Men)

Applicant Status	Sex	2013	2014	2015	2016	2017
Placed	Men	100	100	100	100	100
	Women	134	137	143	146	149

S.38 Placed applicants from Scotland by sex: 5 days after A level results day

Placed applicants: change relative to 2016 cycle totals

Men
Women



S.39 Placed applicants from Scotland by sex: 5 days after A level results day

Applicant Status	Sex	2013	2014	2015	2016	2017
Placed	Men	11,840	11,820	12,660	13,270	13,050
	Women	15,800	16,680	18,730	19,490	20,280
	All	27,640	28,500	31,390	32,760	33,330

S.40 Placed applicants from Scotland by sex: 5 days after A level results day

Placed applicants: change relative to 2016 cycle totals

Applicant Status	Sex	2013	2014	2015	2016	2017
Placed	Men	-11%	-11%	-5%	0%	-2%
	Women	-19%	-14%	-4%	0%	4%
	All	-16%	-13%	-4%	0%	2%

S.41 Placed applicants from Scotland by sex: 5 days after A level results day

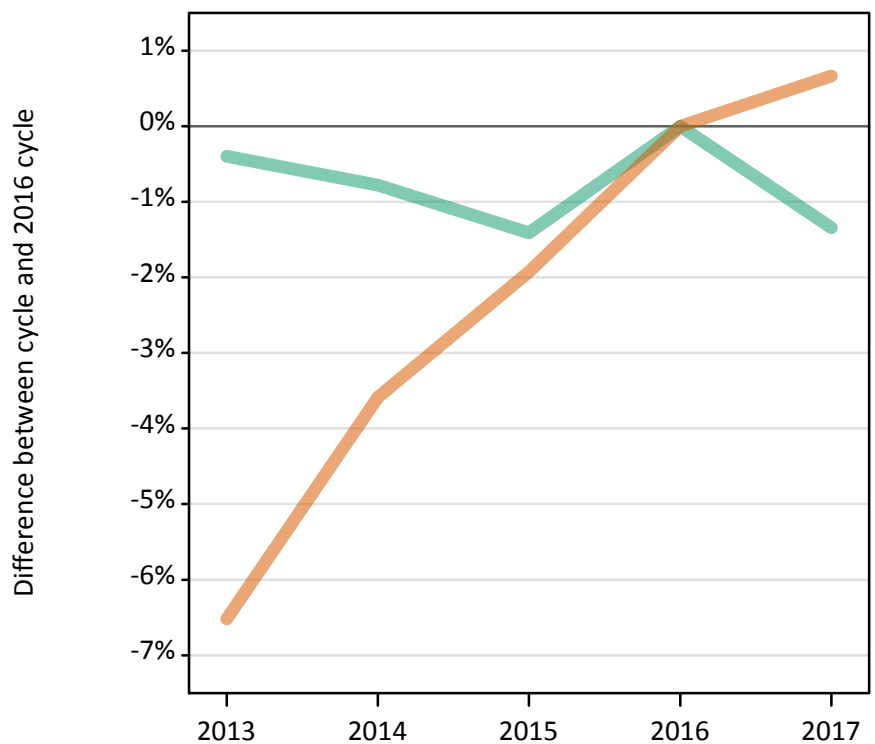
Placed applicants: absolute change relative to 2016 cycle totals

Applicant Status	Sex	2013	2014	2015	2016	2017
Placed	Men	-1,430	-1,450	-620	0	-220
	Women	-3,690	-2,810	-760	0	790
	All	-5,120	-4,260	-1,370	0	570

S.42 Placed 18 year old applicants from Scotland by sex: 5 days after A level results day

Placed 18 year old applicants: change relative to 2016 cycle totals

Men
Women



S.43 Placed 18 year old applicants from Scotland by sex: 5 days after A level results day

Applicant Status	Sex	2013	2014	2015	2016	2017
Placed	Men	6,000	5,980	5,940	6,030	5,950
	Women	8,000	8,260	8,400	8,560	8,620
	All	14,010	14,230	14,340	14,590	14,560

S.44 Placed 18 year old applicants from Scotland by sex: 5 days after A level results day

Placed 18 year old applicants: change relative to 2016 cycle totals

Applicant Status	Sex	2013	2014	2015	2016	2017
Placed	Men	-0%	-1%	-1%	0%	-1%
	Women	-7%	-4%	-2%	0%	1%
	All	-4%	-2%	-2%	0%	-0%

S.45 Placed 18 year old applicants from Scotland by sex: 5 days after A level results day

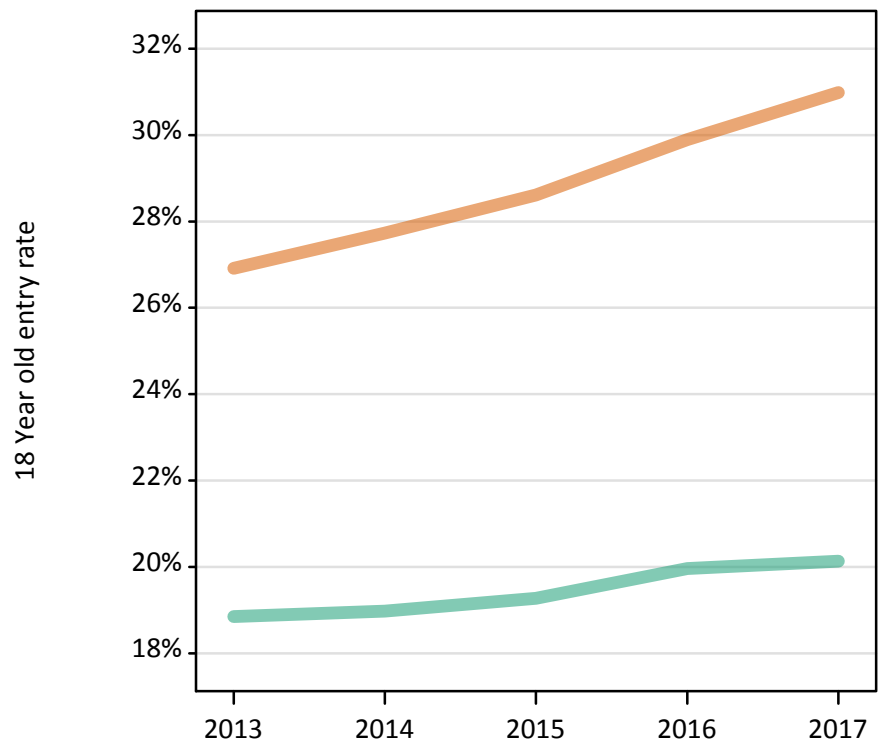
Placed 18 year old applicants: absolute change relative to 2016 cycle totals

Applicant Status	Sex	2013	2014	2015	2016	2017
Placed	Men	-20	-50	-90	0	-80
	Women	-560	-310	-170	0	60
	All	-580	-350	-250	0	-20

S.46 Placed 18 year old applicants from Scotland by sex: 5 days after A level results day

Placed 18 year old applicants: entry rate

Men
Women



S.47 Placed 18 year old applicants from Scotland by sex: 5 days after A level results day

Placed 18 year old applicants: entry rate

Applicant Status	Sex	2013	2014	2015	2016	2017
Placed	Men	18.9%	19.0%	19.3%	20.0%	20.1%
	Women	26.9%	27.7%	28.6%	29.9%	31.0%
	All	22.7%	23.2%	23.8%	24.8%	25.4%

S.48 Placed 18 year old applicants from Scotland by sex: 5 days after A level results day

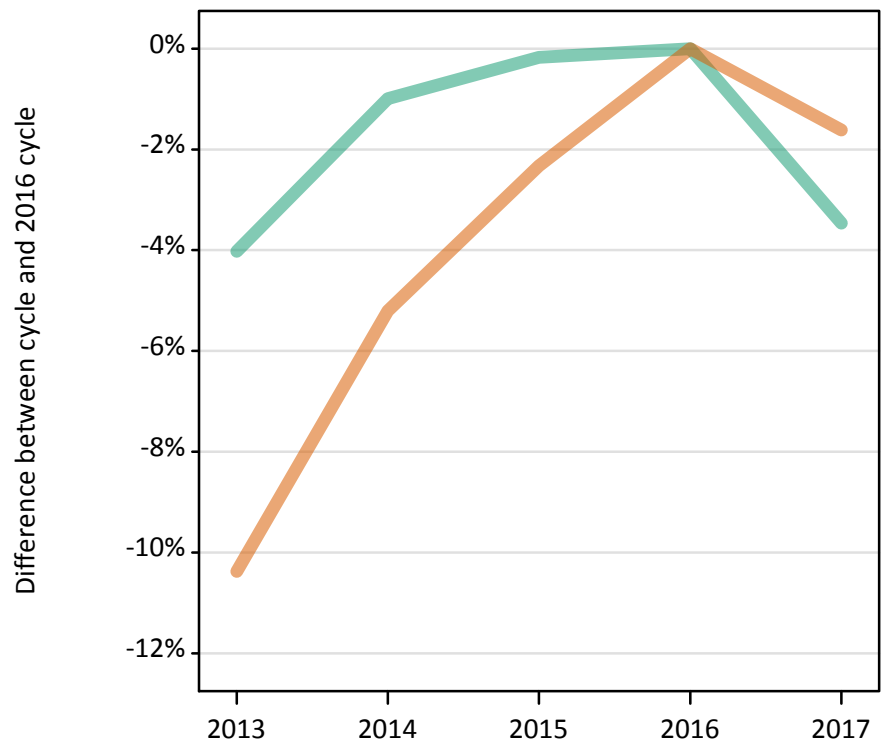
Placed 18 year old applicants: entry rate (indexed to 100 = Men)

Applicant Status	Sex	2013	2014	2015	2016	2017
Placed	Men	100	100	100	100	100
	Women	143	146	148	150	154

S.49 Placed applicants from Wales by sex: 5 days after A level results day

Placed applicants: change relative to 2016 cycle totals

Men
Women



S.50 Placed applicants from Wales by sex: 5 days after A level results day

Applicant Status	Sex	2013	2014	2015	2016	2017
Placed	Men	7,370	7,600	7,670	7,680	7,410
	Women	9,780	10,340	10,660	10,910	10,740
	All	17,150	17,950	18,320	18,590	18,150

S.51 Placed applicants from Wales by sex: 5 days after A level results day

Placed applicants: change relative to 2016 cycle totals

Applicant Status	Sex	2013	2014	2015	2016	2017
Placed	Men	-4%	-1%	-0%	0%	-3%
	Women	-10%	-5%	-2%	0%	-2%
	All	-8%	-3%	-1%	0%	-2%

S.52 Placed applicants from Wales by sex: 5 days after A level results day

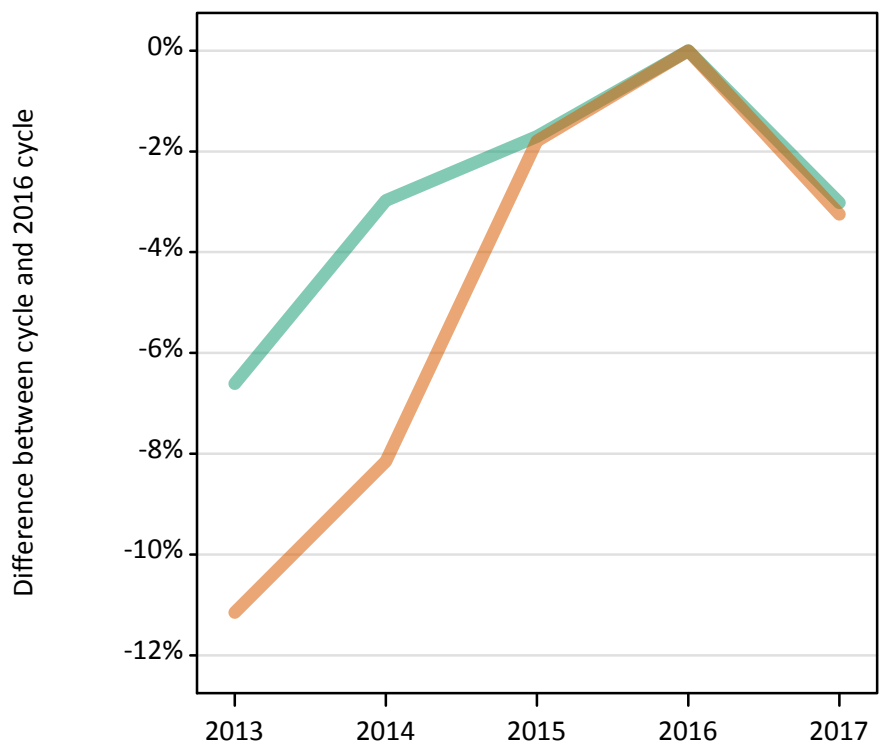
Placed applicants: absolute change relative to 2016 cycle totals

Applicant Status	Sex	2013	2014	2015	2016	2017
Placed	Men	-310	-80	-10	0	-270
	Women	-1,130	-570	-250	0	-180
	All	-1,440	-640	-270	0	-440

S.53 Placed 18 year old applicants from Wales by sex: 5 days after A level results day

Placed 18 year old applicants: change relative to 2016 cycle totals

Men
Women



S.54 Placed 18 year old applicants from Wales by sex: 5 days after A level results day

Applicant Status	Sex	2013	2014	2015	2016	2017
Placed	Men	4,060	4,210	4,270	4,340	4,210
	Women	5,360	5,540	5,930	6,040	5,840
	All	9,420	9,760	10,200	10,380	10,050

S.55 Placed 18 year old applicants from Wales by sex: 5 days after A level results day

Placed 18 year old applicants: change relative to 2016 cycle totals

Applicant Status	Sex	2013	2014	2015	2016	2017
Placed	Men	-7%	-3%	-2%	0%	-3%
	Women	-11%	-8%	-2%	0%	-3%
	All	-9%	-6%	-2%	0%	-3%

S.56 Placed 18 year old applicants from Wales by sex: 5 days after A level results day

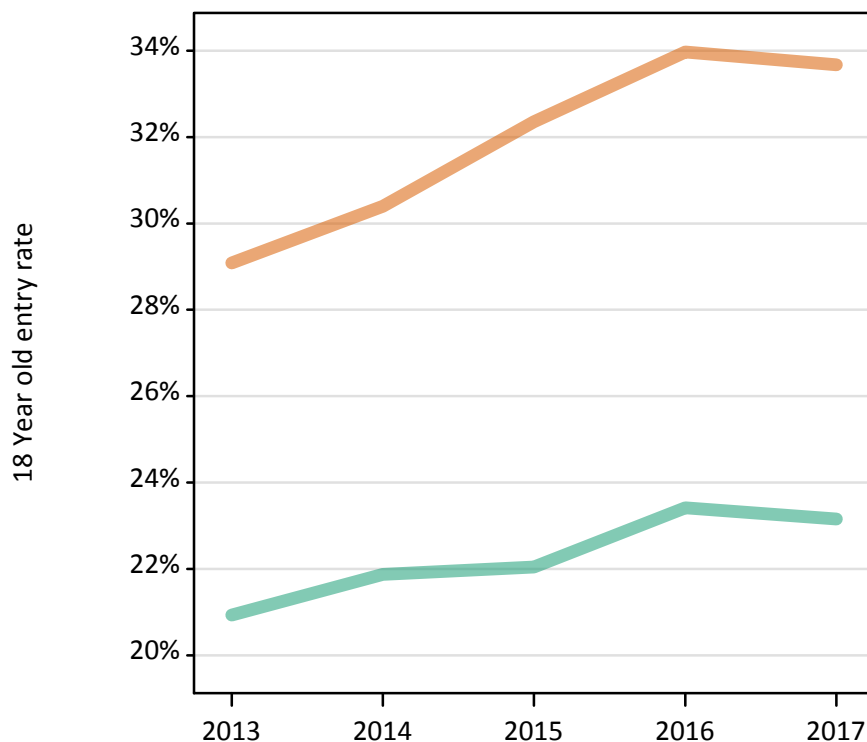
Placed 18 year old applicants: absolute change relative to 2016 cycle totals

Applicant Status	Sex	2013	2014	2015	2016	2017
Placed	Men	-290	-130	-70	0	-130
	Women	-670	-490	-110	0	-200
	All	-960	-620	-180	0	-330

S.57 Placed 18 year old applicants from Wales by sex: 5 days after A level results day

Placed 18 year old applicants: entry rate

Men
Women



S.58 Placed 18 year old applicants from Wales by sex: 5 days after A level results day

Placed 18 year old applicants: entry rate

Applicant Status	Sex	2013	2014	2015	2016	2017
Placed	Men	20.9%	21.9%	22.0%	23.4%	23.2%
	Women	29.1%	30.4%	32.4%	34.0%	33.7%
	All	24.9%	26.0%	27.1%	28.6%	28.3%

S.59 Placed 18 year old applicants from Wales by sex: 5 days after A level results day

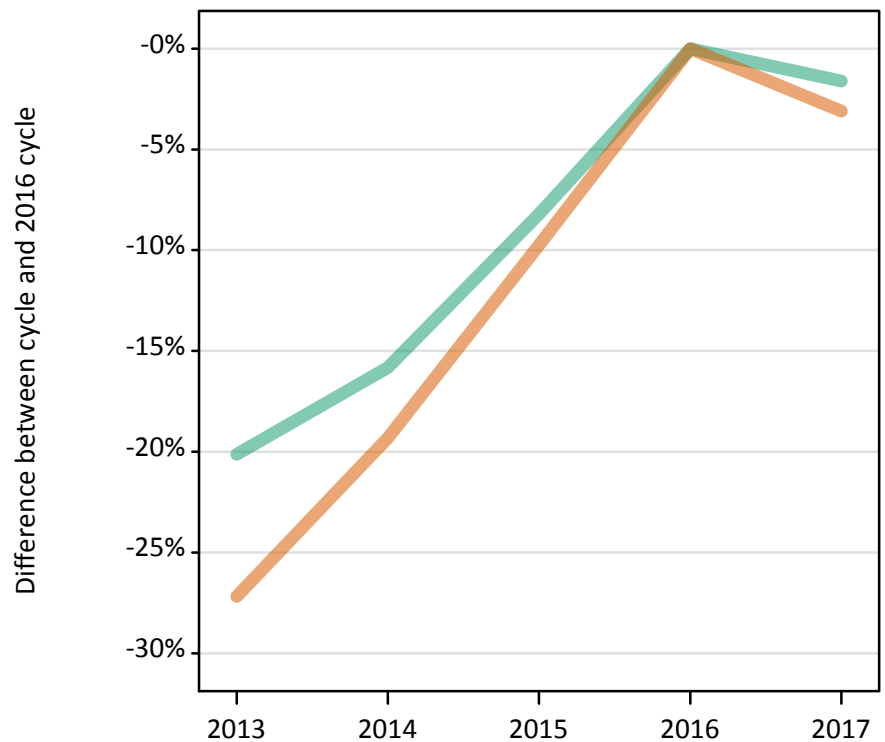
Placed 18 year old applicants: entry rate (indexed to 100 = Men)

Applicant Status	Sex	2013	2014	2015	2016	2017
Placed	Men	100	100	100	100	100
	Women	139	139	147	145	145

S.60 Placed applicants from the EU (excluding the UK) by sex: 5 days after A level results day

Placed applicants: change relative to 2016 cycle totals

Men
Women



S.61 Placed applicants from the EU (excluding the UK) by sex: 5 days after A level results day

Applicant Status	Sex	2013	2014	2015	2016	2017
Placed	Men	9,540	10,050	10,960	11,940	11,750
	Women	12,130	13,440	15,030	16,650	16,140
	All	21,670	23,490	25,990	28,600	27,890

S.62 Placed applicants from the EU (excluding the UK) by sex: 5 days after A level results day

Placed applicants: change relative to 2016 cycle totals

Applicant Status	Sex	2013	2014	2015	2016	2017
Placed	Men	-20%	-16%	-8%	0%	-2%
	Women	-27%	-19%	-10%	0%	-3%
	All	-24%	-18%	-9%	0%	-2%

S.63 Placed applicants from the EU (excluding the UK) by sex: 5 days after A level results day

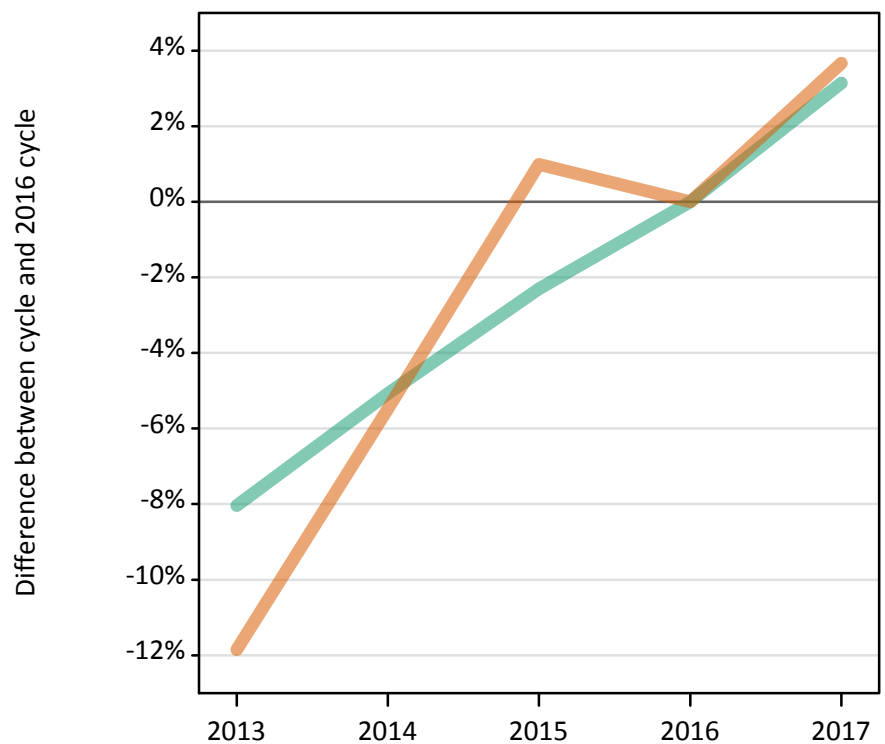
Placed applicants: absolute change relative to 2016 cycle totals

Applicant Status	Sex	2013	2014	2015	2016	2017
Placed	Men	-2,400	-1,890	-980	0	-190
	Women	-4,530	-3,220	-1,630	0	-520
	All	-6,930	-5,110	-2,610	0	-710

S.64 Placed applicants from overseas (not EU) by sex: 5 days after A level results day

Placed applicants: change relative to 2016 cycle totals

Men
Women



S.65 Placed applicants from overseas (not EU) by sex: 5 days after A level results day

Applicant Status	Sex	2013	2014	2015	2016	2017
Placed	Men	13,720	14,170	14,580	14,920	15,390
	Women	15,290	16,400	17,520	17,350	17,980
	All	29,020	30,560	32,100	32,270	33,380

S.66 Placed applicants from overseas (not EU) by sex: 5 days after A level results day

Placed applicants: change relative to 2016 cycle totals

Applicant Status	Sex	2013	2014	2015	2016	2017
Placed	Men	-8%	-5%	-2%	0%	3%
	Women	-12%	-5%	1%	0%	4%
	All	-10%	-5%	-1%	0%	3%

S.67 Placed applicants from overseas (not EU) by sex: 5 days after A level results day

Placed applicants: absolute change relative to 2016 cycle totals

Applicant Status	Sex	2013	2014	2015	2016	2017
Placed	Men	-1,200	-760	-340	0	470
	Women	-2,060	-950	170	0	640
	All	-3,260	-1,710	-170	0	1,110