

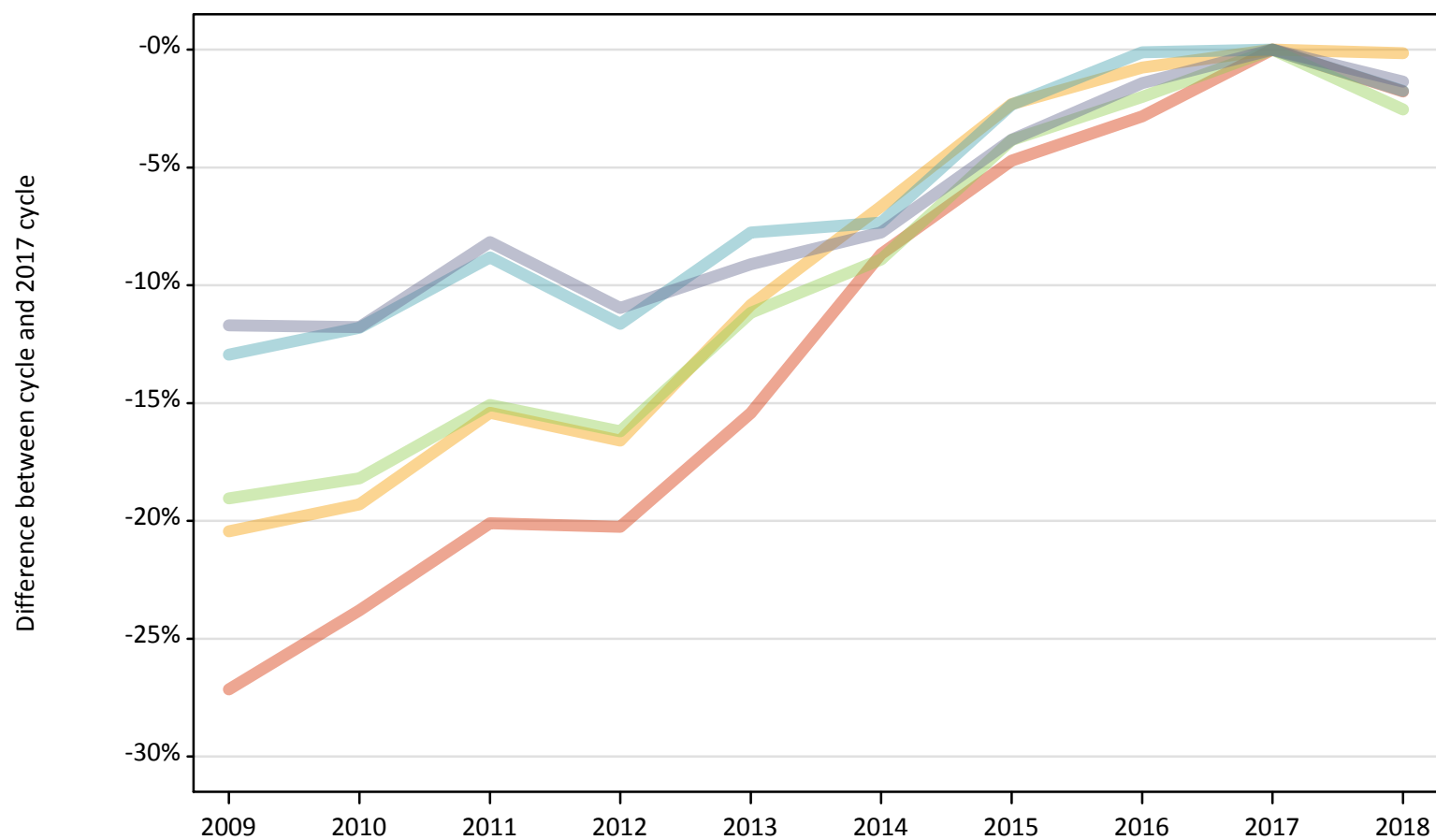
Daily Clearing Analysis: POLAR3

Analysis at 00:05 on Tuesday 21 August 2018 (5 days after A level results day)

P.1 Placed 18 year old applicants from England by POLAR3 quintile: 5 days after A level results day

Placed 18 year old applicants: change relative to 2017 cycle totals

- Quintile 1
- Quintile 2
- Quintile 3
- Quintile 4
- Quintile 5



Note: The percentage change is not plotted in the above chart for groups with fewer than 30 placed applicants in any one cycle.

P.2 Placed 18 year old applicants from England by POLAR3 quintile: 5 days after A level results day

| Applicant Status | POLAR3 | 2009 | 2010 | 2011 | 2012 | 2013 | 2014 | 2015 | 2016 | 2017 | 2018 |
|------------------|------------|--------|--------|--------|--------|--------|--------|--------|--------|--------|--------|
| Placed | Quintile 1 | 16,140 | 16,890 | 17,710 | 17,670 | 18,740 | 20,240 | 21,120 | 21,530 | 22,160 | 21,770 |
| | Quintile 2 | 24,390 | 24,740 | 25,930 | 25,570 | 27,330 | 28,620 | 29,950 | 30,420 | 30,660 | 30,610 |
| | Quintile 3 | 32,040 | 32,380 | 33,610 | 33,160 | 35,160 | 36,050 | 38,060 | 38,780 | 39,570 | 38,570 |
| | Quintile 4 | 39,840 | 40,370 | 41,730 | 40,440 | 42,220 | 42,410 | 44,700 | 45,710 | 45,770 | 44,970 |
| | Quintile 5 | 54,400 | 54,360 | 56,580 | 54,860 | 56,000 | 56,830 | 59,260 | 60,740 | 61,610 | 60,780 |

P.3 Placed 18 year old applicants from England by POLAR3 quintile: 5 days after A level results day

Placed 18 year old applicants: change relative to 2017 cycle totals

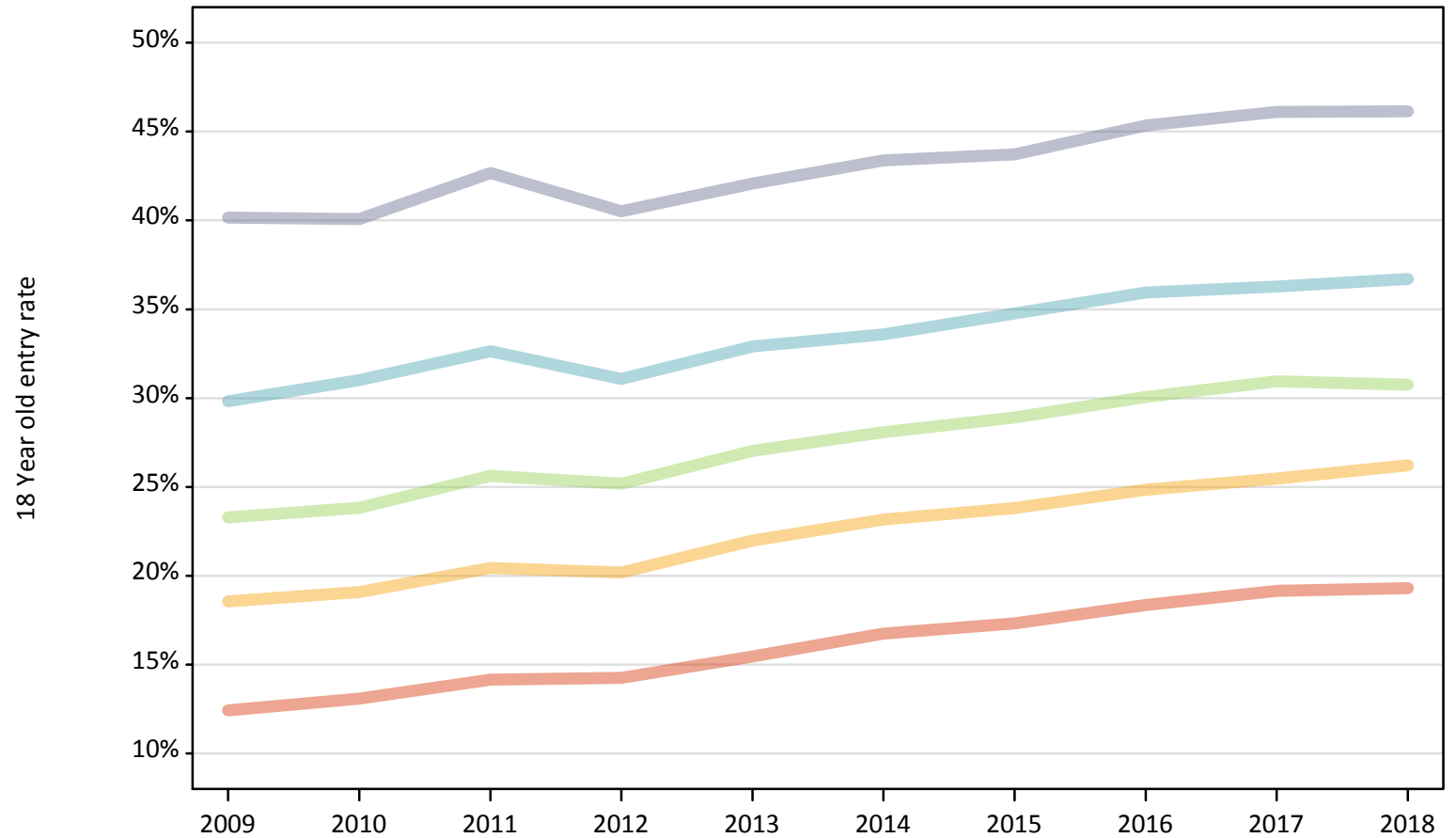
| Applicant Status | POLAR3 | 2009 | 2010 | 2011 | 2012 | 2013 | 2014 | 2015 | 2016 | 2017 | 2018 |
|------------------|------------|------|------|------|------|------|------|------|------|------|------|
| Placed | Quintile 1 | -27% | -24% | -20% | -20% | -15% | -9% | -5% | -3% | 0% | -2% |
| | Quintile 2 | -20% | -19% | -15% | -17% | -11% | -7% | -2% | -1% | 0% | -0% |
| | Quintile 3 | -19% | -18% | -15% | -16% | -11% | -9% | -4% | -2% | 0% | -3% |
| | Quintile 4 | -13% | -12% | -9% | -12% | -8% | -7% | -2% | -0% | 0% | -2% |
| | Quintile 5 | -12% | -12% | -8% | -11% | -9% | -8% | -4% | -1% | 0% | -1% |

Note: The percentage change is not recorded in the above table for groups with fewer than 10 placed applicants in that cycle or in the 2017 cycle.

P.4 Placed 18 year old applicants from England by POLAR3 quintile: 5 days after A level results day

Placed 18 year old applicants: entry rate

- Quintile 1
- Quintile 2
- Quintile 3
- Quintile 4
- Quintile 5



P.5 Placed 18 year old applicants from England by POLAR3 quintile: 5 days after A level results day

Placed 18 year old applicants: entry rate

| Applicant Status | POLAR3 | 2009 | 2010 | 2011 | 2012 | 2013 | 2014 | 2015 | 2016 | 2017 | 2018 |
|------------------|------------|-------|-------|-------|-------|-------|-------|-------|-------|-------|-------|
| Placed | Quintile 1 | 12.4% | 13.1% | 14.1% | 14.2% | 15.5% | 16.7% | 17.3% | 18.4% | 19.1% | 19.3% |
| | Quintile 2 | 18.6% | 19.1% | 20.4% | 20.2% | 22.0% | 23.2% | 23.8% | 24.8% | 25.5% | 26.2% |
| | Quintile 3 | 23.3% | 23.8% | 25.6% | 25.2% | 27.0% | 28.1% | 28.9% | 30.1% | 30.9% | 30.8% |
| | Quintile 4 | 29.8% | 31.0% | 32.6% | 31.1% | 32.9% | 33.6% | 34.8% | 35.9% | 36.3% | 36.7% |
| | Quintile 5 | 40.2% | 40.1% | 42.7% | 40.5% | 42.1% | 43.4% | 43.7% | 45.4% | 46.1% | 46.1% |

P.6 Placed 18 year old applicants from England by POLAR3 quintile: 5 days after A level results day

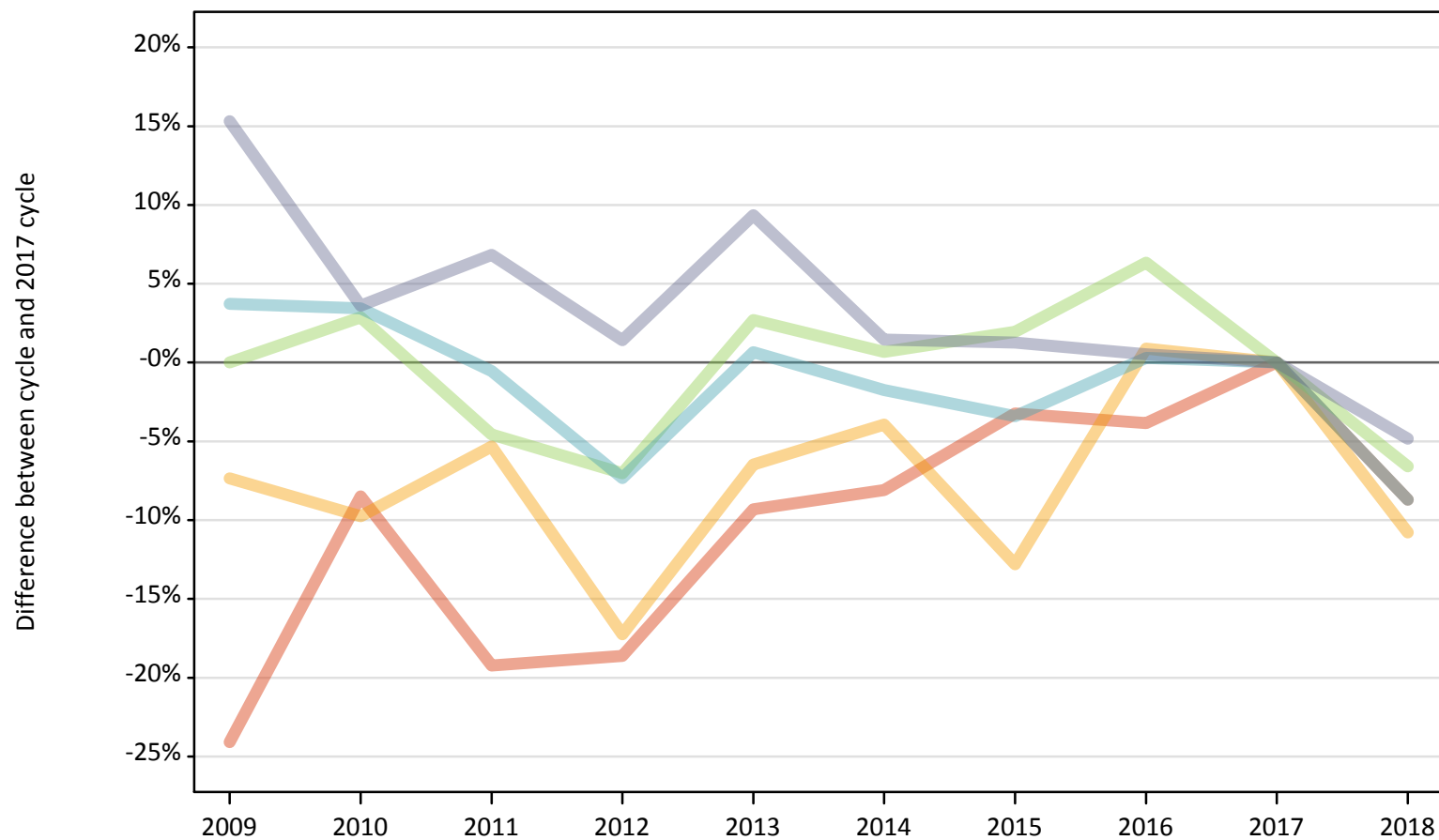
Placed 18 year old applicants: entry rate (indexed to 100 = Quintile 1)

| Applicant Status | POLAR3 | 2009 | 2010 | 2011 | 2012 | 2013 | 2014 | 2015 | 2016 | 2017 | 2018 |
|------------------|------------|------|------|------|------|------|------|------|------|------|------|
| Placed | Quintile 1 | 100 | 100 | 100 | 100 | 100 | 100 | 100 | 100 | 100 | 100 |
| | Quintile 2 | 149 | 146 | 145 | 142 | 142 | 138 | 138 | 135 | 133 | 136 |
| | Quintile 3 | 187 | 182 | 181 | 177 | 175 | 168 | 167 | 164 | 162 | 159 |
| | Quintile 4 | 240 | 237 | 231 | 218 | 213 | 201 | 201 | 196 | 190 | 190 |
| | Quintile 5 | 323 | 306 | 302 | 284 | 272 | 259 | 252 | 247 | 241 | 239 |

P.7 Placed 18 year old applicants from Northern Ireland by POLAR3 quintile: 5 days after A level results day

Placed 18 year old applicants: change relative to 2017 cycle totals

- Quintile 1
- Quintile 2
- Quintile 3
- Quintile 4
- Quintile 5



Note: The percentage change is not plotted in the above chart for groups with fewer than 30 placed applicants in any one cycle.

P.8 Placed 18 year old applicants from Northern Ireland by POLAR3 quintile: 5 days after A level results day

| Applicant Status | POLAR3 | 2009 | 2010 | 2011 | 2012 | 2013 | 2014 | 2015 | 2016 | 2017 | 2018 |
|------------------|------------|-------|-------|-------|-------|-------|-------|-------|-------|-------|-------|
| Placed | Quintile 1 | 380 | 450 | 400 | 400 | 450 | 450 | 480 | 480 | 490 | 450 |
| | Quintile 2 | 730 | 710 | 750 | 650 | 740 | 760 | 690 | 800 | 790 | 700 |
| | Quintile 3 | 1,180 | 1,220 | 1,130 | 1,100 | 1,220 | 1,190 | 1,210 | 1,260 | 1,180 | 1,110 |
| | Quintile 4 | 2,500 | 2,500 | 2,400 | 2,240 | 2,430 | 2,370 | 2,330 | 2,420 | 2,410 | 2,200 |
| | Quintile 5 | 3,480 | 3,120 | 3,220 | 3,060 | 3,300 | 3,060 | 3,050 | 3,030 | 3,020 | 2,870 |

P.9 Placed 18 year old applicants from Northern Ireland by POLAR3 quintile: 5 days after A level results day

Placed 18 year old applicants: change relative to 2017 cycle totals

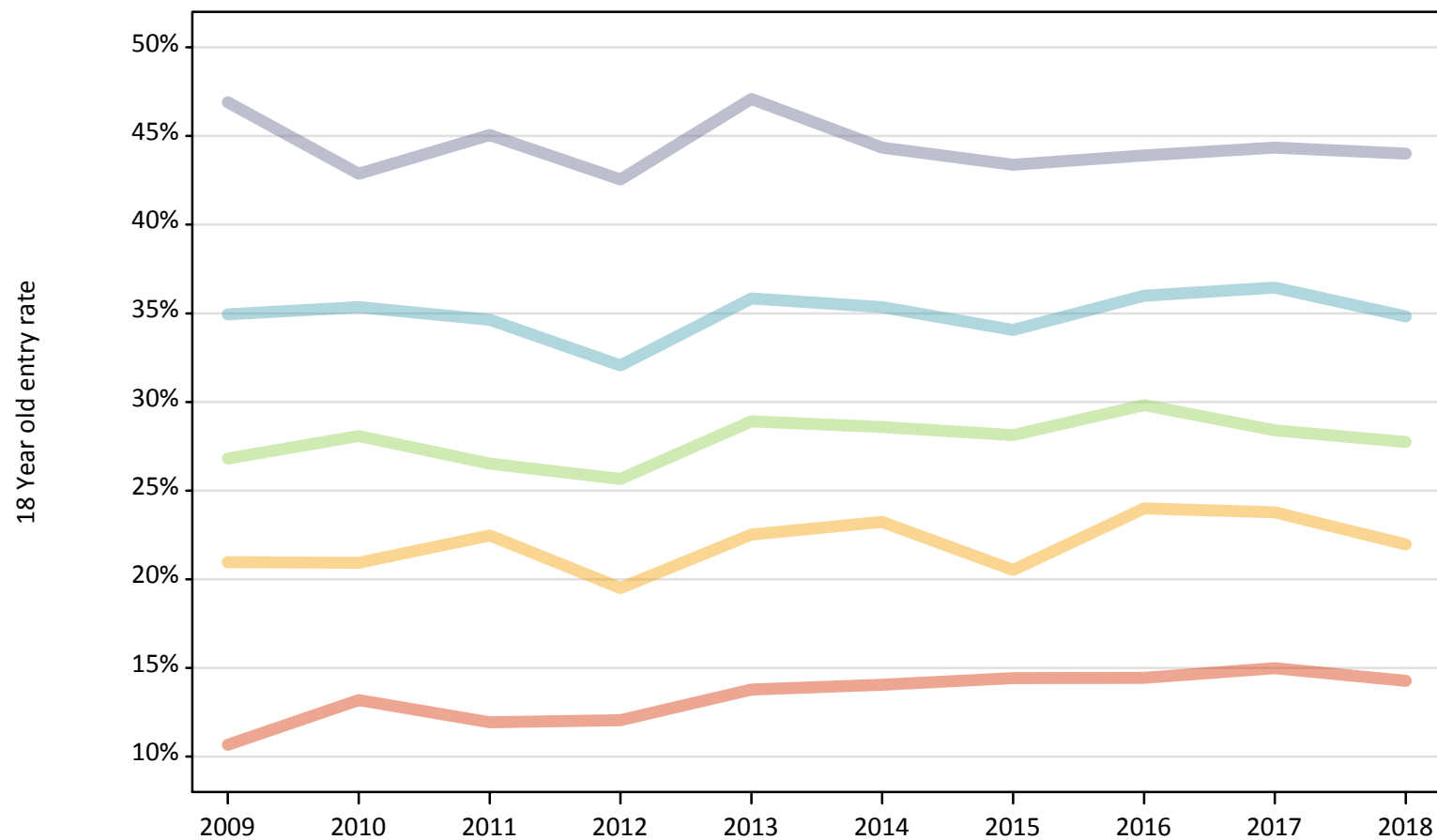
| Applicant Status | POLAR3 | 2009 | 2010 | 2011 | 2012 | 2013 | 2014 | 2015 | 2016 | 2017 | 2018 |
|------------------|------------|------|------|------|------|------|------|------|------|------|------|
| Placed | Quintile 1 | -24% | -9% | -19% | -19% | -9% | -8% | -3% | -4% | 0% | -9% |
| | Quintile 2 | -7% | -10% | -5% | -17% | -6% | -4% | -13% | 1% | 0% | -11% |
| | Quintile 3 | 0% | 3% | -5% | -7% | 3% | 1% | 2% | 6% | 0% | -7% |
| | Quintile 4 | 4% | 3% | -1% | -7% | 1% | -2% | -3% | 0% | 0% | -9% |
| | Quintile 5 | 15% | 4% | 7% | 1% | 9% | 1% | 1% | 1% | 0% | -5% |

Note: The percentage change is not recorded in the above table for groups with fewer than 10 placed applicants in that cycle or in the 2017 cycle.

P.10 Placed 18 year old applicants from Northern Ireland by POLAR3 quintile: 5 days after A level results day

Placed 18 year old applicants: entry rate

- Quintile 1
- Quintile 2
- Quintile 3
- Quintile 4
- Quintile 5



P.11 Placed 18 year old applicants from Northern Ireland by POLAR3 quintile: 5 days after A level results day

Placed 18 year old applicants: entry rate

| Applicant Status | POLAR3 | 2009 | 2010 | 2011 | 2012 | 2013 | 2014 | 2015 | 2016 | 2017 | 2018 |
|------------------|------------|-------|-------|-------|-------|-------|-------|-------|-------|-------|-------|
| Placed | Quintile 1 | 10.7% | 13.2% | 11.9% | 12.0% | 13.8% | 14.0% | 14.4% | 14.4% | 15.0% | 14.3% |
| | Quintile 2 | 21.0% | 20.9% | 22.5% | 19.5% | 22.5% | 23.2% | 20.5% | 24.0% | 23.8% | 22.0% |
| | Quintile 3 | 26.8% | 28.1% | 26.5% | 25.7% | 28.9% | 28.6% | 28.1% | 29.8% | 28.4% | 27.7% |
| | Quintile 4 | 34.9% | 35.3% | 34.6% | 32.1% | 35.8% | 35.3% | 34.1% | 36.0% | 36.5% | 34.8% |
| | Quintile 5 | 46.9% | 42.9% | 45.1% | 42.6% | 47.1% | 44.3% | 43.4% | 43.9% | 44.3% | 44.0% |

P.12 Placed 18 year old applicants from Northern Ireland by POLAR3 quintile: 5 days after A level results day

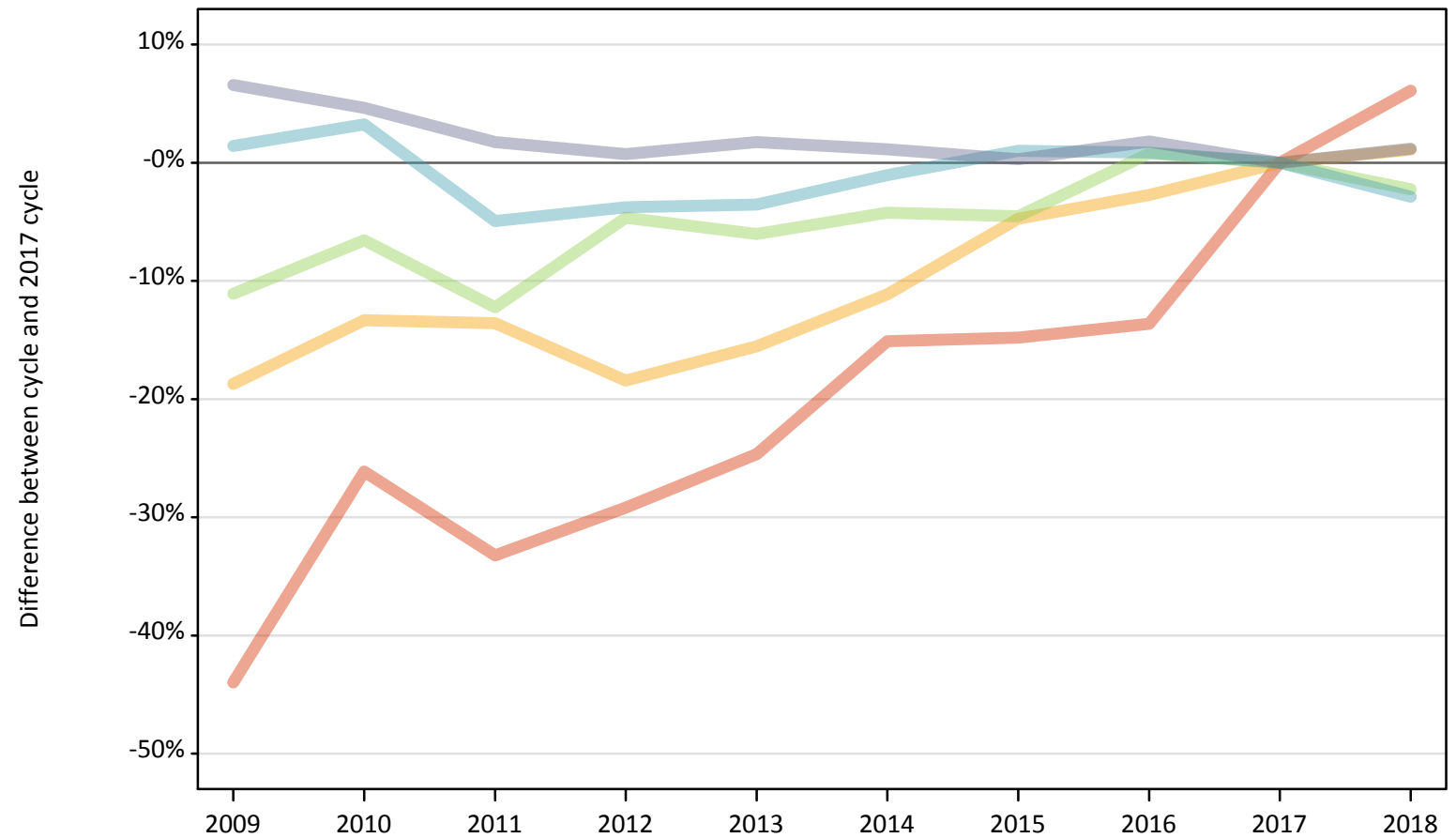
Placed 18 year old applicants: entry rate (indexed to 100 = Quintile 1)

| Applicant Status | POLAR3 | 2009 | 2010 | 2011 | 2012 | 2013 | 2014 | 2015 | 2016 | 2017 | 2018 |
|------------------|------------|------|------|------|------|------|------|------|------|------|------|
| Placed | Quintile 1 | 100 | 100 | 100 | 100 | 100 | 100 | 100 | 100 | 100 | 100 |
| | Quintile 2 | 197 | 159 | 189 | 162 | 163 | 165 | 142 | 166 | 159 | 154 |
| | Quintile 3 | 252 | 213 | 222 | 213 | 210 | 204 | 195 | 206 | 190 | 194 |
| | Quintile 4 | 328 | 268 | 291 | 266 | 260 | 252 | 236 | 249 | 243 | 244 |
| | Quintile 5 | 440 | 325 | 378 | 353 | 342 | 316 | 301 | 304 | 296 | 308 |

P.13 Placed 18 year old applicants from Scotland by POLAR3 quintile: 5 days after A level results day

Placed 18 year old applicants: change relative to 2017 cycle totals

- Quintile 1
- Quintile 2
- Quintile 3
- Quintile 4
- Quintile 5



Note: The percentage change is not plotted in the above chart for groups with fewer than 30 placed applicants in any one cycle.

P.14 Placed 18 year old applicants from Scotland by POLAR3 quintile: 5 days after A level results day

| Applicant Status | POLAR3 | 2009 | 2010 | 2011 | 2012 | 2013 | 2014 | 2015 | 2016 | 2017 | 2018 |
|------------------|------------|-------|-------|-------|-------|-------|-------|-------|-------|-------|-------|
| Placed | Quintile 1 | 390 | 510 | 460 | 490 | 520 | 590 | 590 | 600 | 690 | 730 |
| | Quintile 2 | 1,260 | 1,340 | 1,340 | 1,260 | 1,310 | 1,370 | 1,470 | 1,500 | 1,550 | 1,560 |
| | Quintile 3 | 2,020 | 2,120 | 2,000 | 2,170 | 2,140 | 2,180 | 2,170 | 2,290 | 2,270 | 2,220 |
| | Quintile 4 | 3,440 | 3,500 | 3,220 | 3,260 | 3,270 | 3,350 | 3,420 | 3,420 | 3,390 | 3,290 |
| | Quintile 5 | 7,070 | 6,950 | 6,750 | 6,690 | 6,750 | 6,710 | 6,660 | 6,760 | 6,640 | 6,720 |

P.15 Placed 18 year old applicants from Scotland by POLAR3 quintile: 5 days after A level results day

Placed 18 year old applicants: change relative to 2017 cycle totals

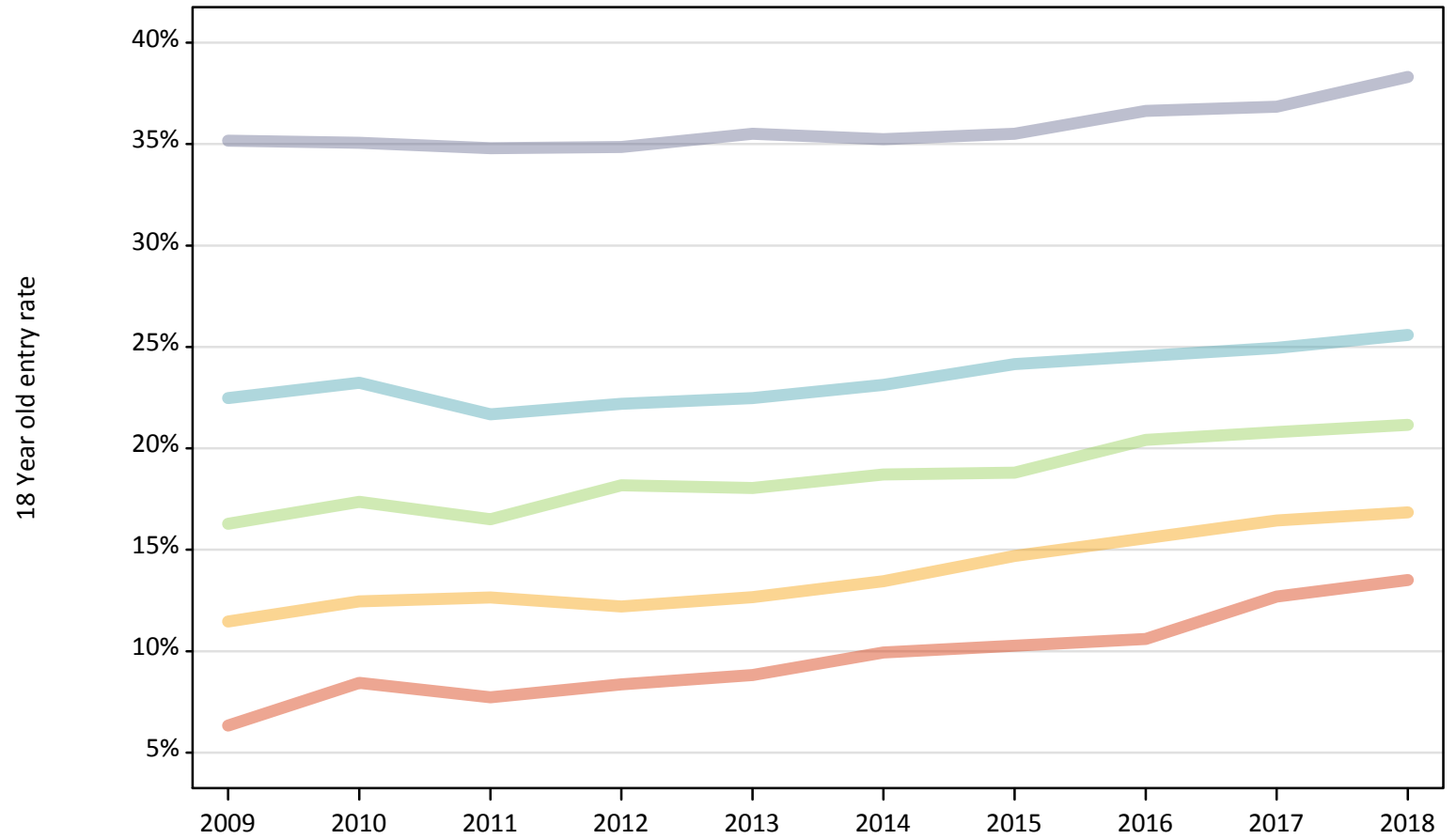
| Applicant Status | POLAR3 | 2009 | 2010 | 2011 | 2012 | 2013 | 2014 | 2015 | 2016 | 2017 | 2018 |
|------------------|------------|------|------|------|------|------|------|------|------|------|------|
| Placed | Quintile 1 | -44% | -26% | -33% | -29% | -25% | -15% | -15% | -14% | 0% | 6% |
| | Quintile 2 | -19% | -13% | -14% | -18% | -16% | -11% | -5% | -3% | 0% | 1% |
| | Quintile 3 | -11% | -7% | -12% | -5% | -6% | -4% | -5% | 1% | 0% | -2% |
| | Quintile 4 | 1% | 3% | -5% | -4% | -4% | -1% | 1% | 1% | 0% | -3% |
| | Quintile 5 | 7% | 5% | 2% | 1% | 2% | 1% | 0% | 2% | 0% | 1% |

Note: The percentage change is not recorded in the above table for groups with fewer than 10 placed applicants in that cycle or in the 2017 cycle.

P.16 Placed 18 year old applicants from Scotland by POLAR3 quintile: 5 days after A level results day

Placed 18 year old applicants: entry rate

- Quintile 1
- Quintile 2
- Quintile 3
- Quintile 4
- Quintile 5



P.17 Placed 18 year old applicants from Scotland by POLAR3 quintile: 5 days after A level results day

Placed 18 year old applicants: entry rate

| Applicant Status | POLAR3 | 2009 | 2010 | 2011 | 2012 | 2013 | 2014 | 2015 | 2016 | 2017 | 2018 |
|------------------|------------|-------|-------|-------|-------|-------|-------|-------|-------|-------|-------|
| Placed | Quintile 1 | 6.3% | 8.4% | 7.7% | 8.4% | 8.8% | 9.9% | 10.3% | 10.6% | 12.7% | 13.5% |
| | Quintile 2 | 11.5% | 12.5% | 12.6% | 12.2% | 12.7% | 13.4% | 14.7% | 15.6% | 16.4% | 16.8% |
| | Quintile 3 | 16.3% | 17.4% | 16.5% | 18.2% | 18.0% | 18.7% | 18.8% | 20.4% | 20.8% | 21.2% |
| | Quintile 4 | 22.5% | 23.2% | 21.7% | 22.2% | 22.5% | 23.1% | 24.2% | 24.6% | 24.9% | 25.6% |
| | Quintile 5 | 35.2% | 35.1% | 34.8% | 34.9% | 35.5% | 35.2% | 35.5% | 36.6% | 36.9% | 38.3% |

P.18 Placed 18 year old applicants from Scotland by POLAR3 quintile: 5 days after A level results day

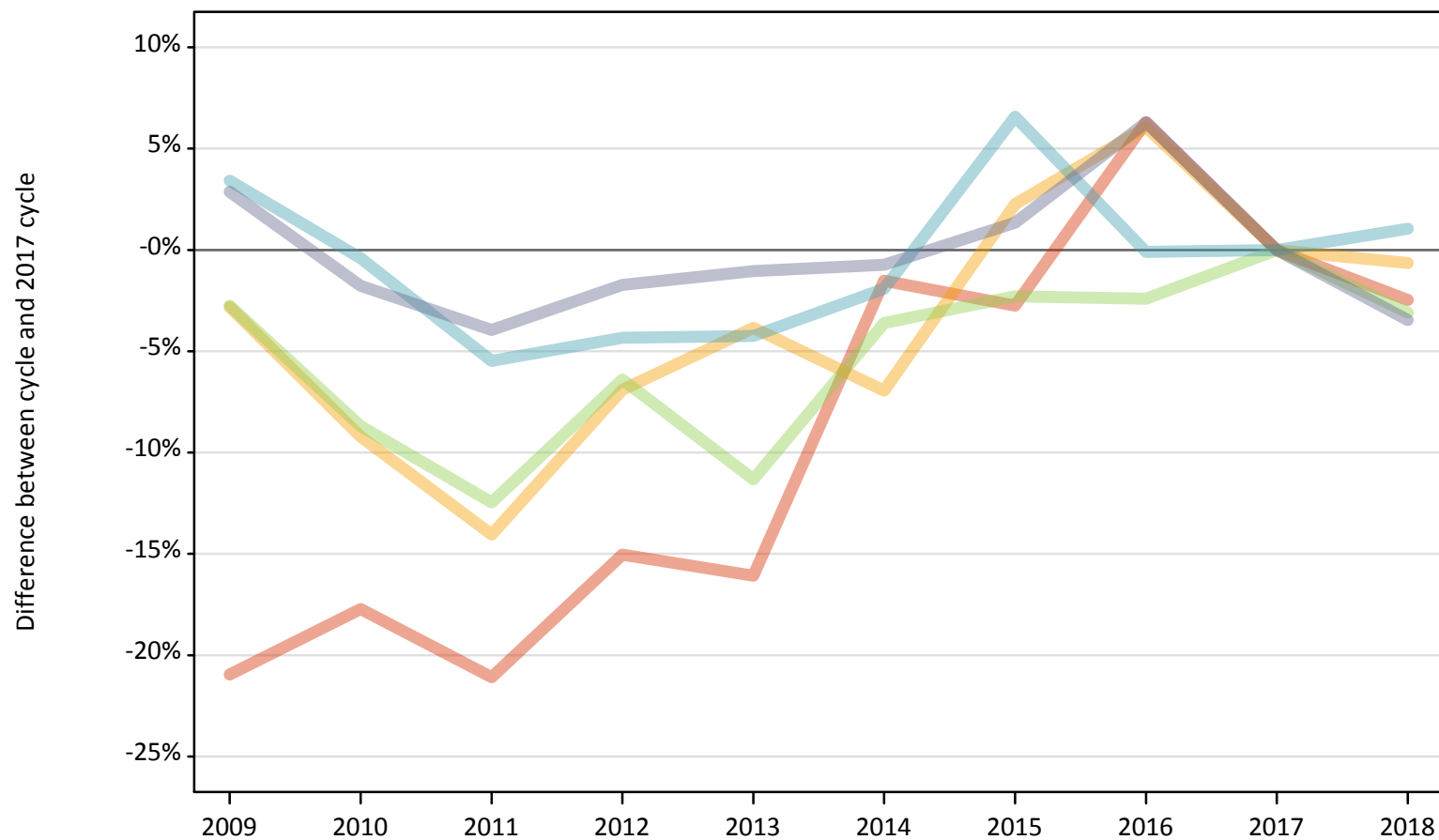
Placed 18 year old applicants: entry rate (indexed to 100 = Quintile 1)

| Applicant Status | POLAR3 | 2009 | 2010 | 2011 | 2012 | 2013 | 2014 | 2015 | 2016 | 2017 | 2018 |
|------------------|------------|------|------|------|------|------|------|------|------|------|------|
| Placed | Quintile 1 | 100 | 100 | 100 | 100 | 100 | 100 | 100 | 100 | 100 | 100 |
| | Quintile 2 | 181 | 147 | 163 | 146 | 144 | 135 | 143 | 147 | 130 | 125 |
| | Quintile 3 | 257 | 206 | 213 | 218 | 205 | 188 | 183 | 192 | 164 | 157 |
| | Quintile 4 | 355 | 275 | 280 | 266 | 255 | 233 | 235 | 231 | 197 | 190 |
| | Quintile 5 | 555 | 415 | 450 | 417 | 403 | 355 | 345 | 345 | 290 | 284 |

P.19 Placed 18 year old applicants from Wales by POLAR3 quintile: 5 days after A level results day

Placed 18 year old applicants: change relative to 2017 cycle totals

- Quintile 1
- Quintile 2
- Quintile 3
- Quintile 4
- Quintile 5



Note: The percentage change is not plotted in the above chart for groups with fewer than 30 placed applicants in any one cycle.

P.20 Placed 18 year old applicants from Wales by POLAR3 quintile: 5 days after A level results day

| Applicant Status | POLAR3 | 2009 | 2010 | 2011 | 2012 | 2013 | 2014 | 2015 | 2016 | 2017 | 2018 |
|------------------|------------|-------|-------|-------|-------|-------|-------|-------|-------|-------|-------|
| Placed | Quintile 1 | 1,150 | 1,200 | 1,150 | 1,240 | 1,220 | 1,430 | 1,420 | 1,550 | 1,460 | 1,420 |
| | Quintile 2 | 1,970 | 1,840 | 1,740 | 1,890 | 1,950 | 1,890 | 2,080 | 2,150 | 2,030 | 2,020 |
| | Quintile 3 | 1,700 | 1,600 | 1,530 | 1,640 | 1,550 | 1,690 | 1,710 | 1,710 | 1,750 | 1,700 |
| | Quintile 4 | 2,260 | 2,180 | 2,070 | 2,090 | 2,100 | 2,150 | 2,330 | 2,190 | 2,190 | 2,210 |
| | Quintile 5 | 2,680 | 2,560 | 2,500 | 2,560 | 2,580 | 2,590 | 2,640 | 2,770 | 2,610 | 2,520 |

P.21 Placed 18 year old applicants from Wales by POLAR3 quintile: 5 days after A level results day

Placed 18 year old applicants: change relative to 2017 cycle totals

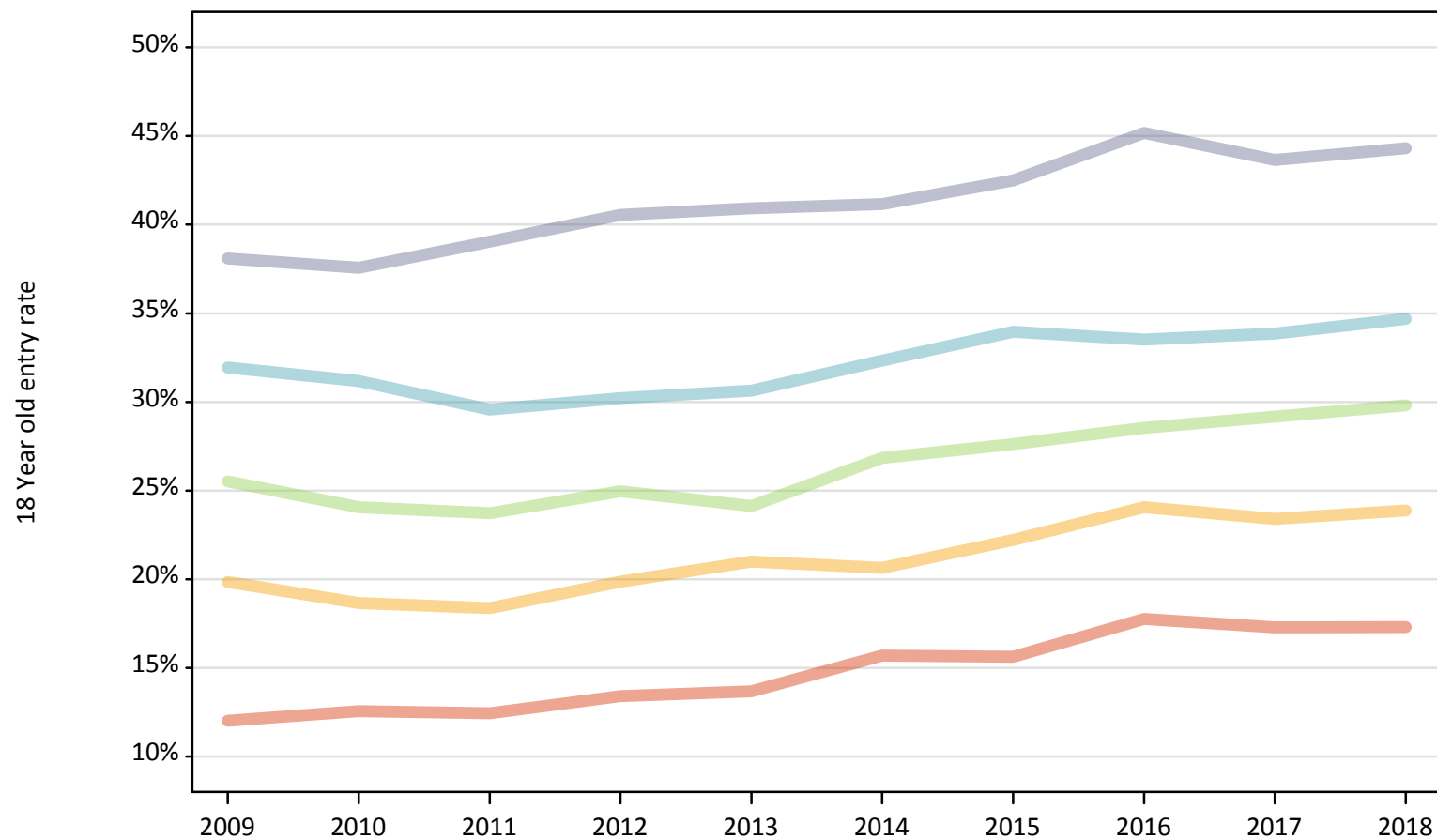
| Applicant Status | POLAR3 | 2009 | 2010 | 2011 | 2012 | 2013 | 2014 | 2015 | 2016 | 2017 | 2018 |
|------------------|------------|------|------|------|------|------|------|------|------|------|------|
| Placed | Quintile 1 | -21% | -18% | -21% | -15% | -16% | -2% | -3% | 6% | 0% | -2% |
| | Quintile 2 | -3% | -9% | -14% | -7% | -4% | -7% | 2% | 6% | 0% | -1% |
| | Quintile 3 | -3% | -9% | -12% | -6% | -11% | -4% | -2% | -2% | 0% | -3% |
| | Quintile 4 | 3% | -0% | -5% | -4% | -4% | -2% | 7% | -0% | 0% | 1% |
| | Quintile 5 | 3% | -2% | -4% | -2% | -1% | -1% | 1% | 6% | 0% | -3% |

Note: The percentage change is not recorded in the above table for groups with fewer than 10 placed applicants in that cycle or in the 2017 cycle.

P.22 Placed 18 year old applicants from Wales by POLAR3 quintile: 5 days after A level results day

Placed 18 year old applicants: entry rate

- Quintile 1
- Quintile 2
- Quintile 3
- Quintile 4
- Quintile 5



P.23 Placed 18 year old applicants from Wales by POLAR3 quintile: 5 days after A level results day

Placed 18 year old applicants: entry rate

| Applicant Status | POLAR3 | 2009 | 2010 | 2011 | 2012 | 2013 | 2014 | 2015 | 2016 | 2017 | 2018 |
|------------------|------------|-------|-------|-------|-------|-------|-------|-------|-------|-------|-------|
| Placed | Quintile 1 | 12.0% | 12.6% | 12.4% | 13.4% | 13.7% | 15.7% | 15.6% | 17.8% | 17.3% | 17.3% |
| | Quintile 2 | 19.8% | 18.7% | 18.4% | 19.9% | 21.0% | 20.6% | 22.2% | 24.1% | 23.4% | 23.9% |
| | Quintile 3 | 25.5% | 24.1% | 23.7% | 25.0% | 24.1% | 26.8% | 27.6% | 28.5% | 29.2% | 29.8% |
| | Quintile 4 | 31.9% | 31.2% | 29.6% | 30.2% | 30.6% | 32.3% | 34.0% | 33.5% | 33.9% | 34.7% |
| | Quintile 5 | 38.1% | 37.6% | 39.0% | 40.5% | 40.9% | 41.2% | 42.5% | 45.2% | 43.6% | 44.3% |

P.24 Placed 18 year old applicants from Wales by POLAR3 quintile: 5 days after A level results day

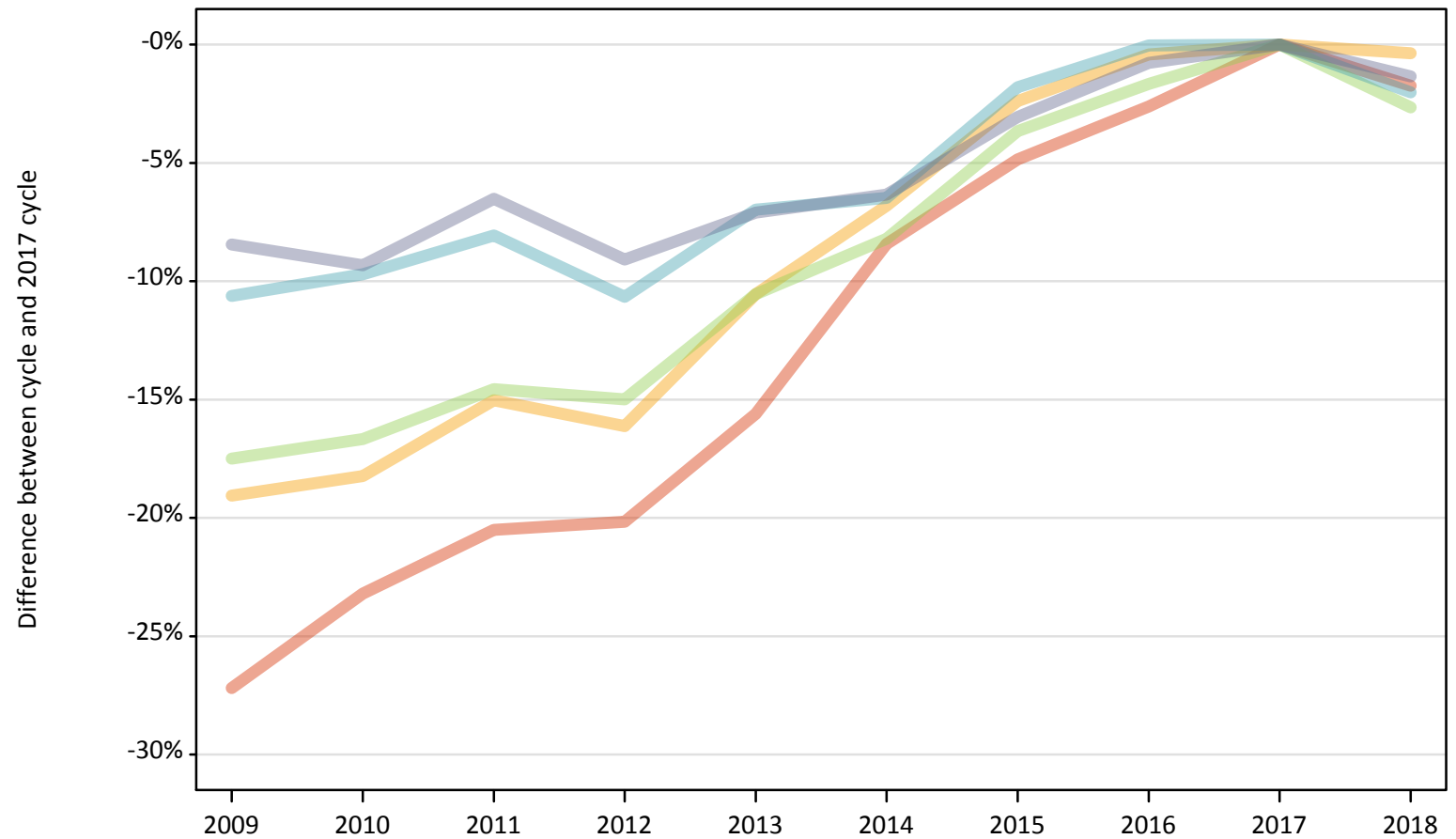
Placed 18 year old applicants: entry rate (indexed to 100 = Quintile 1)

| Applicant Status | POLAR3 | 2009 | 2010 | 2011 | 2012 | 2013 | 2014 | 2015 | 2016 | 2017 | 2018 |
|------------------|------------|------|------|------|------|------|------|------|------|------|------|
| Placed | Quintile 1 | 100 | 100 | 100 | 100 | 100 | 100 | 100 | 100 | 100 | 100 |
| | Quintile 2 | 165 | 149 | 148 | 148 | 153 | 132 | 142 | 136 | 135 | 138 |
| | Quintile 3 | 212 | 192 | 191 | 186 | 176 | 171 | 177 | 161 | 169 | 172 |
| | Quintile 4 | 266 | 248 | 238 | 225 | 224 | 206 | 217 | 189 | 196 | 201 |
| | Quintile 5 | 317 | 299 | 314 | 302 | 299 | 262 | 272 | 254 | 252 | 256 |

P.25 Placed 18 year old applicants from the UK by POLAR3 quintile: 5 days after A level results day

Placed 18 year old applicants: change relative to 2017 cycle totals

- Quintile 1
- Quintile 2
- Quintile 3
- Quintile 4
- Quintile 5



Note: The percentage change is not plotted in the above chart for groups with fewer than 30 placed applicants in any one cycle.

P.26 Placed 18 year old applicants from the UK by POLAR3 quintile: 5 days after A level results day

| Applicant Status | POLAR3 | 2009 | 2010 | 2011 | 2012 | 2013 | 2014 | 2015 | 2016 | 2017 | 2018 |
|------------------|------------|--------|--------|--------|--------|--------|--------|--------|--------|--------|--------|
| Placed | Quintile 1 | 18,060 | 19,050 | 19,710 | 19,800 | 20,930 | 22,710 | 23,600 | 24,150 | 24,800 | 24,370 |
| | Quintile 2 | 28,350 | 28,630 | 29,760 | 29,370 | 31,330 | 32,630 | 34,180 | 34,870 | 35,020 | 34,890 |
| | Quintile 3 | 36,950 | 37,320 | 38,260 | 38,070 | 40,060 | 41,100 | 43,140 | 44,040 | 44,780 | 43,590 |
| | Quintile 4 | 48,050 | 48,540 | 49,420 | 48,030 | 50,010 | 50,280 | 52,790 | 53,740 | 53,760 | 52,670 |
| | Quintile 5 | 67,640 | 66,990 | 69,060 | 67,160 | 68,630 | 69,200 | 71,610 | 73,300 | 73,870 | 72,880 |

P.27 Placed 18 year old applicants from the UK by POLAR3 quintile: 5 days after A level results day

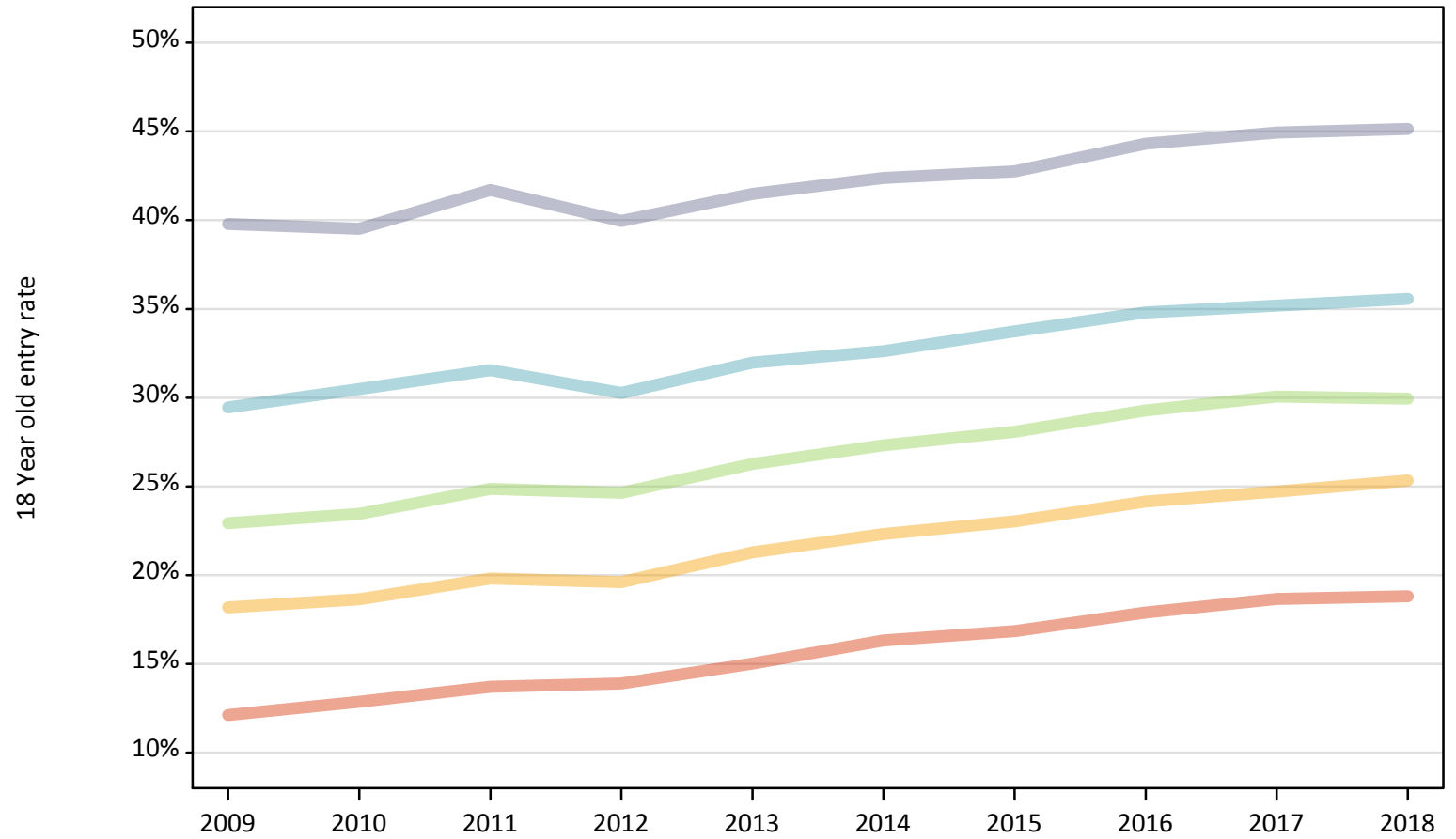
Placed 18 year old applicants: change relative to 2017 cycle totals

| Applicant Status | POLAR3 | 2009 | 2010 | 2011 | 2012 | 2013 | 2014 | 2015 | 2016 | 2017 | 2018 |
|------------------|------------|------|------|------|------|------|------|------|------|------|------|
| Placed | Quintile 1 | -27% | -23% | -21% | -20% | -16% | -8% | -5% | -3% | 0% | -2% |
| | Quintile 2 | -19% | -18% | -15% | -16% | -11% | -7% | -2% | -0% | 0% | -0% |
| | Quintile 3 | -17% | -17% | -15% | -15% | -11% | -8% | -4% | -2% | 0% | -3% |
| | Quintile 4 | -11% | -10% | -8% | -11% | -7% | -6% | -2% | -0% | 0% | -2% |
| | Quintile 5 | -8% | -9% | -7% | -9% | -7% | -6% | -3% | -1% | 0% | -1% |

Note: The percentage change is not recorded in the above table for groups with fewer than 10 placed applicants in that cycle or in the 2017 cycle.

P.28 Placed 18 year old applicants from the UK by POLAR3 quintile: 5 days after A level results day
Placed 18 year old applicants: entry rate

- Quintile 1
- Quintile 2
- Quintile 3
- Quintile 4
- Quintile 5



P.29 Placed 18 year old applicants from the UK by POLAR3 quintile: 5 days after A level results day

Placed 18 year old applicants: entry rate

| Applicant Status | POLAR3 | 2009 | 2010 | 2011 | 2012 | 2013 | 2014 | 2015 | 2016 | 2017 | 2018 |
|------------------|------------|-------|-------|-------|-------|-------|-------|-------|-------|-------|-------|
| Placed | Quintile 1 | 12.1% | 12.9% | 13.7% | 13.9% | 15.0% | 16.3% | 16.9% | 17.9% | 18.7% | 18.8% |
| | Quintile 2 | 18.2% | 18.6% | 19.8% | 19.6% | 21.3% | 22.3% | 23.0% | 24.2% | 24.7% | 25.3% |
| | Quintile 3 | 22.9% | 23.5% | 24.9% | 24.6% | 26.3% | 27.3% | 28.1% | 29.3% | 30.1% | 29.9% |
| | Quintile 4 | 29.5% | 30.5% | 31.5% | 30.3% | 32.0% | 32.6% | 33.7% | 34.8% | 35.2% | 35.6% |
| | Quintile 5 | 39.8% | 39.5% | 41.7% | 40.0% | 41.5% | 42.4% | 42.7% | 44.3% | 44.9% | 45.1% |

P.30 Placed 18 year old applicants from the UK by POLAR3 quintile: 5 days after A level results day

Placed 18 year old applicants: entry rate (indexed to 100 = Quintile 1)

| Applicant Status | POLAR3 | 2009 | 2010 | 2011 | 2012 | 2013 | 2014 | 2015 | 2016 | 2017 | 2018 |
|------------------|------------|------|------|------|------|------|------|------|------|------|------|
| Placed | Quintile 1 | 100 | 100 | 100 | 100 | 100 | 100 | 100 | 100 | 100 | 100 |
| | Quintile 2 | 150 | 145 | 144 | 141 | 142 | 137 | 137 | 135 | 132 | 135 |
| | Quintile 3 | 189 | 182 | 181 | 177 | 175 | 167 | 167 | 164 | 161 | 159 |
| | Quintile 4 | 243 | 237 | 230 | 218 | 213 | 200 | 200 | 195 | 189 | 189 |
| | Quintile 5 | 328 | 307 | 304 | 288 | 276 | 260 | 254 | 248 | 241 | 240 |