

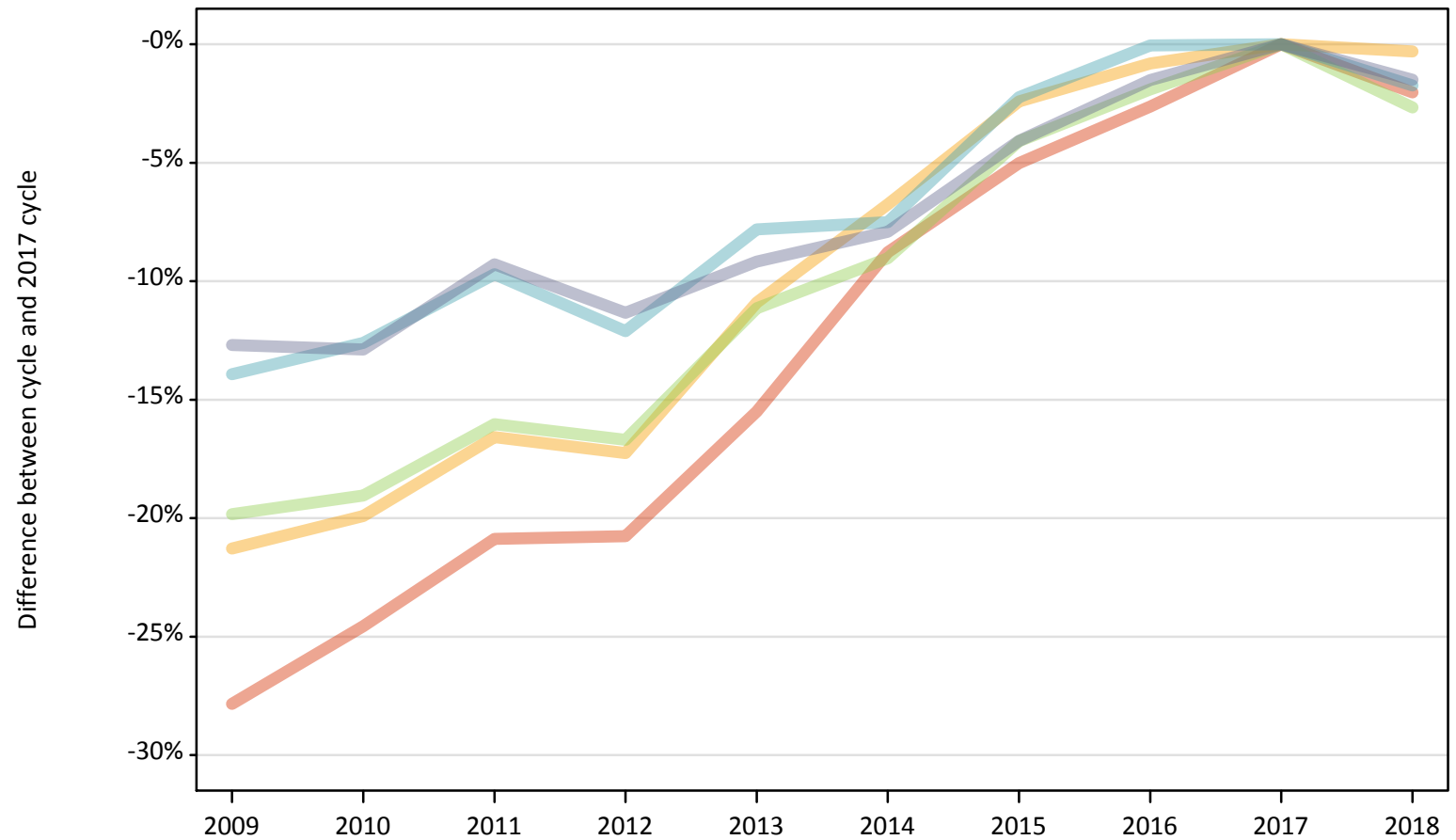
Daily Clearing Analysis: POLAR3

Analysis at 00:05 on Monday 20 August 2018 (4 days after A level results day)

P.1 Placed 18 year old applicants from England by POLAR3 quintile: 4 days after A level results day

Placed 18 year old applicants: change relative to 2017 cycle totals

- Quintile 1
- Quintile 2
- Quintile 3
- Quintile 4
- Quintile 5



Note: The percentage change is not plotted in the above chart for groups with fewer than 30 placed applicants in any one cycle.

P.2 Placed 18 year old applicants from England by POLAR3 quintile: 4 days after A level results day

Applicant Status	POLAR3	2009	2010	2011	2012	2013	2014	2015	2016	2017	2018
Placed	Quintile 1	15,780	16,500	17,300	17,330	18,480	19,950	20,770	21,290	21,870	21,420
	Quintile 2	23,810	24,220	25,230	25,030	26,950	28,200	29,510	30,000	30,240	30,150
	Quintile 3	31,240	31,540	32,720	32,450	34,620	35,440	37,370	38,220	38,960	37,920
	Quintile 4	38,810	39,400	40,710	39,630	41,560	41,700	44,080	45,070	45,090	44,310
	Quintile 5	53,050	52,930	55,110	53,870	55,180	55,950	58,280	59,840	60,760	59,850

P.3 Placed 18 year old applicants from England by POLAR3 quintile: 4 days after A level results day

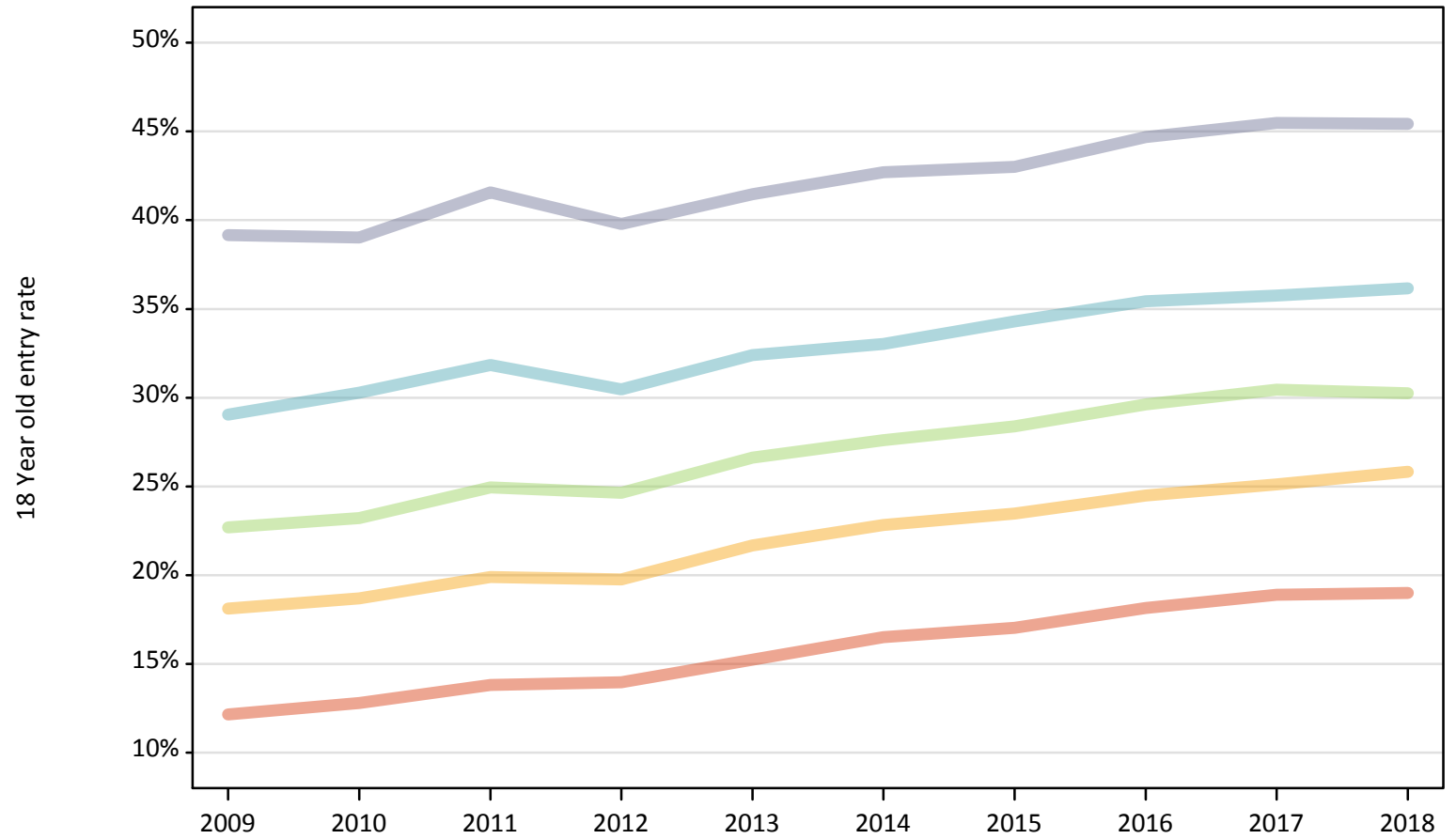
Placed 18 year old applicants: change relative to 2017 cycle totals

Applicant Status	POLAR3	2009	2010	2011	2012	2013	2014	2015	2016	2017	2018
Placed	Quintile 1	-28%	-25%	-21%	-21%	-15%	-9%	-5%	-3%	0%	-2%
	Quintile 2	-21%	-20%	-17%	-17%	-11%	-7%	-2%	-1%	0%	-0%
	Quintile 3	-20%	-19%	-16%	-17%	-11%	-9%	-4%	-2%	0%	-3%
	Quintile 4	-14%	-13%	-10%	-12%	-8%	-8%	-2%	-0%	0%	-2%
	Quintile 5	-13%	-13%	-9%	-11%	-9%	-8%	-4%	-2%	0%	-1%

Note: The percentage change is not recorded in the above table for groups with fewer than 10 placed applicants in that cycle or in the 2017 cycle.

P.4 Placed 18 year old applicants from England by POLAR3 quintile: 4 days after A level results day
Placed 18 year old applicants: entry rate

- Quintile 1
- Quintile 2
- Quintile 3
- Quintile 4
- Quintile 5



P.5 Placed 18 year old applicants from England by POLAR3 quintile: 4 days after A level results day

Placed 18 year old applicants: entry rate

Applicant Status	POLAR3	2009	2010	2011	2012	2013	2014	2015	2016	2017	2018
Placed	Quintile 1	12.2%	12.8%	13.8%	14.0%	15.2%	16.5%	17.0%	18.1%	18.9%	19.0%
	Quintile 2	18.1%	18.7%	19.9%	19.8%	21.7%	22.8%	23.5%	24.5%	25.1%	25.8%
	Quintile 3	22.7%	23.2%	24.9%	24.6%	26.6%	27.6%	28.4%	29.6%	30.5%	30.2%
	Quintile 4	29.1%	30.3%	31.8%	30.5%	32.4%	33.0%	34.3%	35.4%	35.8%	36.2%
	Quintile 5	39.2%	39.0%	41.6%	39.8%	41.5%	42.7%	43.0%	44.7%	45.5%	45.4%

P.6 Placed 18 year old applicants from England by POLAR3 quintile: 4 days after A level results day

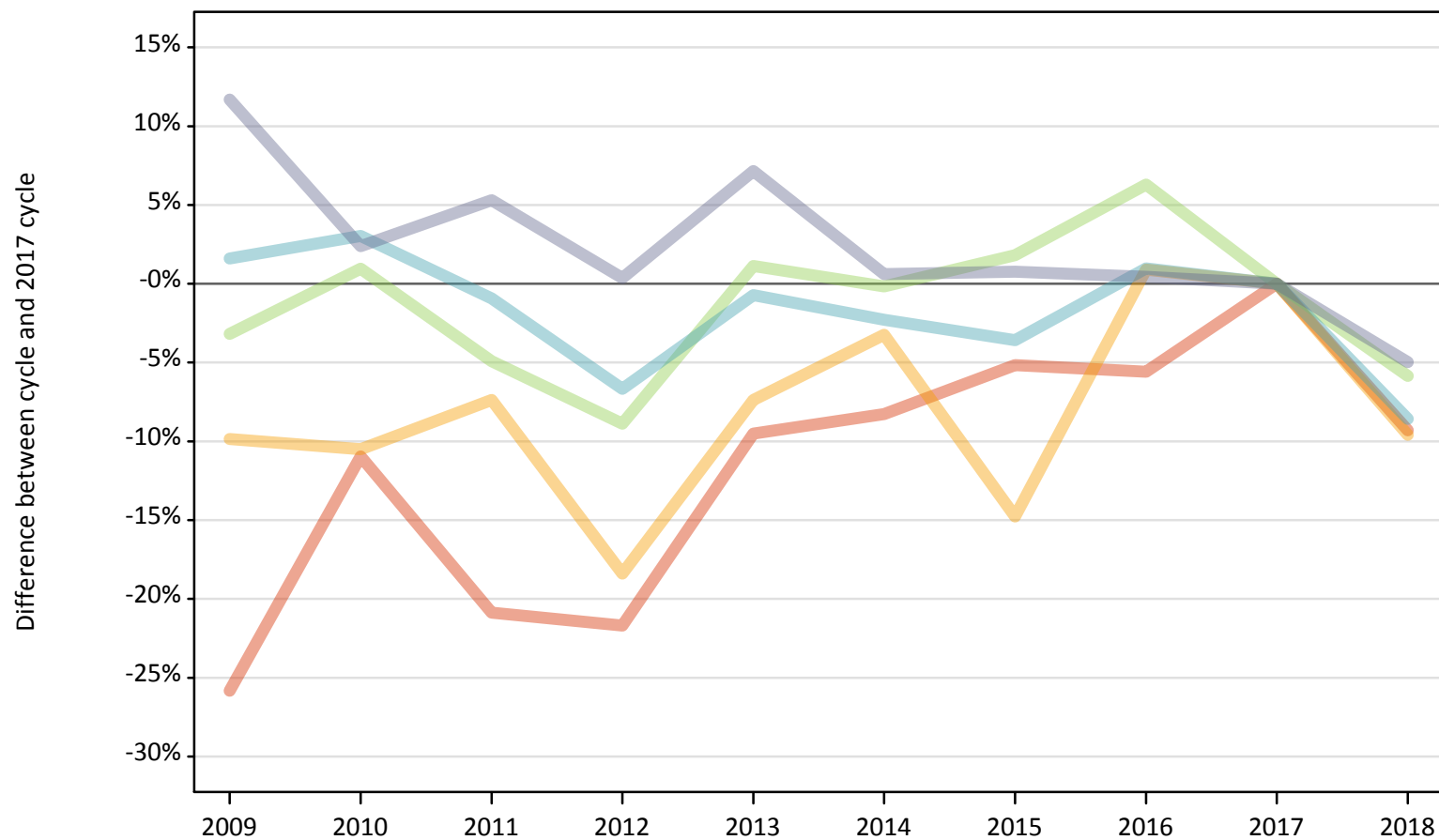
Placed 18 year old applicants: entry rate (indexed to 100 = Quintile 1)

Applicant Status	POLAR3	2009	2010	2011	2012	2013	2014	2015	2016	2017	2018
Placed	Quintile 1	100	100	100	100	100	100	100	100	100	100
	Quintile 2	149	146	144	141	142	138	138	135	133	136
	Quintile 3	187	182	181	176	175	167	167	163	161	159
	Quintile 4	239	237	230	218	213	200	201	195	189	190
	Quintile 5	322	305	301	285	272	259	252	246	241	239

P.7 Placed 18 year old applicants from Northern Ireland by POLAR3 quintile: 4 days after A level results day

Placed 18 year old applicants: change relative to 2017 cycle totals

- Quintile 1
- Quintile 2
- Quintile 3
- Quintile 4
- Quintile 5



Note: The percentage change is not plotted in the above chart for groups with fewer than 30 placed applicants in any one cycle.

P.8 Placed 18 year old applicants from Northern Ireland by POLAR3 quintile: 4 days after A level results day

Applicant Status	POLAR3	2009	2010	2011	2012	2013	2014	2015	2016	2017	2018
Placed	Quintile 1	360	430	380	380	440	440	460	460	480	440
	Quintile 2	700	690	720	630	720	750	660	780	770	700
	Quintile 3	1,120	1,170	1,100	1,060	1,170	1,160	1,180	1,230	1,160	1,090
	Quintile 4	2,410	2,440	2,350	2,210	2,350	2,320	2,280	2,390	2,370	2,170
	Quintile 5	3,320	3,050	3,130	2,990	3,190	2,990	3,000	2,990	2,980	2,830

P.9 Placed 18 year old applicants from Northern Ireland by POLAR3 quintile: 4 days after A level results day

Placed 18 year old applicants: change relative to 2017 cycle totals

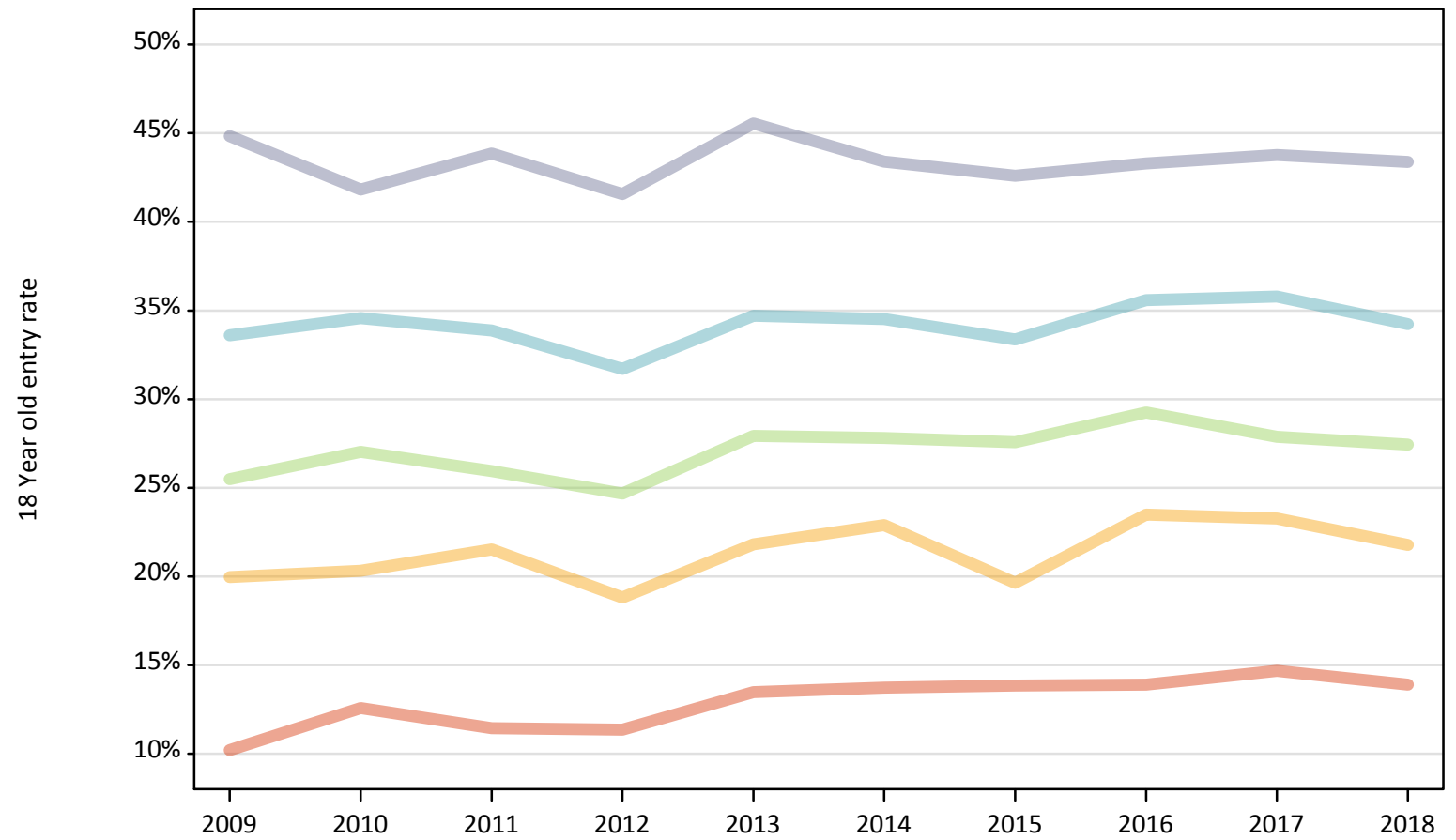
Applicant Status	POLAR3	2009	2010	2011	2012	2013	2014	2015	2016	2017	2018
Placed	Quintile 1	-26%	-11%	-21%	-22%	-10%	-8%	-5%	-6%	0%	-9%
	Quintile 2	-10%	-10%	-7%	-18%	-7%	-3%	-15%	1%	0%	-10%
	Quintile 3	-3%	1%	-5%	-9%	1%	-0%	2%	6%	0%	-6%
	Quintile 4	2%	3%	-1%	-7%	-1%	-2%	-4%	1%	0%	-9%
	Quintile 5	12%	2%	5%	0%	7%	1%	1%	0%	0%	-5%

Note: The percentage change is not recorded in the above table for groups with fewer than 10 placed applicants in that cycle or in the 2017 cycle.

P.10 Placed 18 year old applicants from Northern Ireland by POLAR3 quintile: 4 days after A level results day

Placed 18 year old applicants: entry rate

- Quintile 1
- Quintile 2
- Quintile 3
- Quintile 4
- Quintile 5



P.11 Placed 18 year old applicants from Northern Ireland by POLAR3 quintile: 4 days after A level results day

Placed 18 year old applicants: entry rate

Applicant Status	POLAR3	2009	2010	2011	2012	2013	2014	2015	2016	2017	2018
Placed	Quintile 1	10.2%	12.6%	11.4%	11.4%	13.5%	13.7%	13.9%	13.9%	14.7%	13.9%
	Quintile 2	20.0%	20.3%	21.5%	18.8%	21.8%	22.9%	19.6%	23.5%	23.3%	21.8%
	Quintile 3	25.5%	27.0%	25.9%	24.7%	27.9%	27.8%	27.6%	29.3%	27.9%	27.4%
	Quintile 4	33.6%	34.6%	33.9%	31.7%	34.7%	34.5%	33.4%	35.6%	35.8%	34.2%
	Quintile 5	44.8%	41.8%	43.8%	41.6%	45.5%	43.4%	42.6%	43.3%	43.8%	43.4%

P.12 Placed 18 year old applicants from Northern Ireland by POLAR3 quintile: 4 days after A level results day

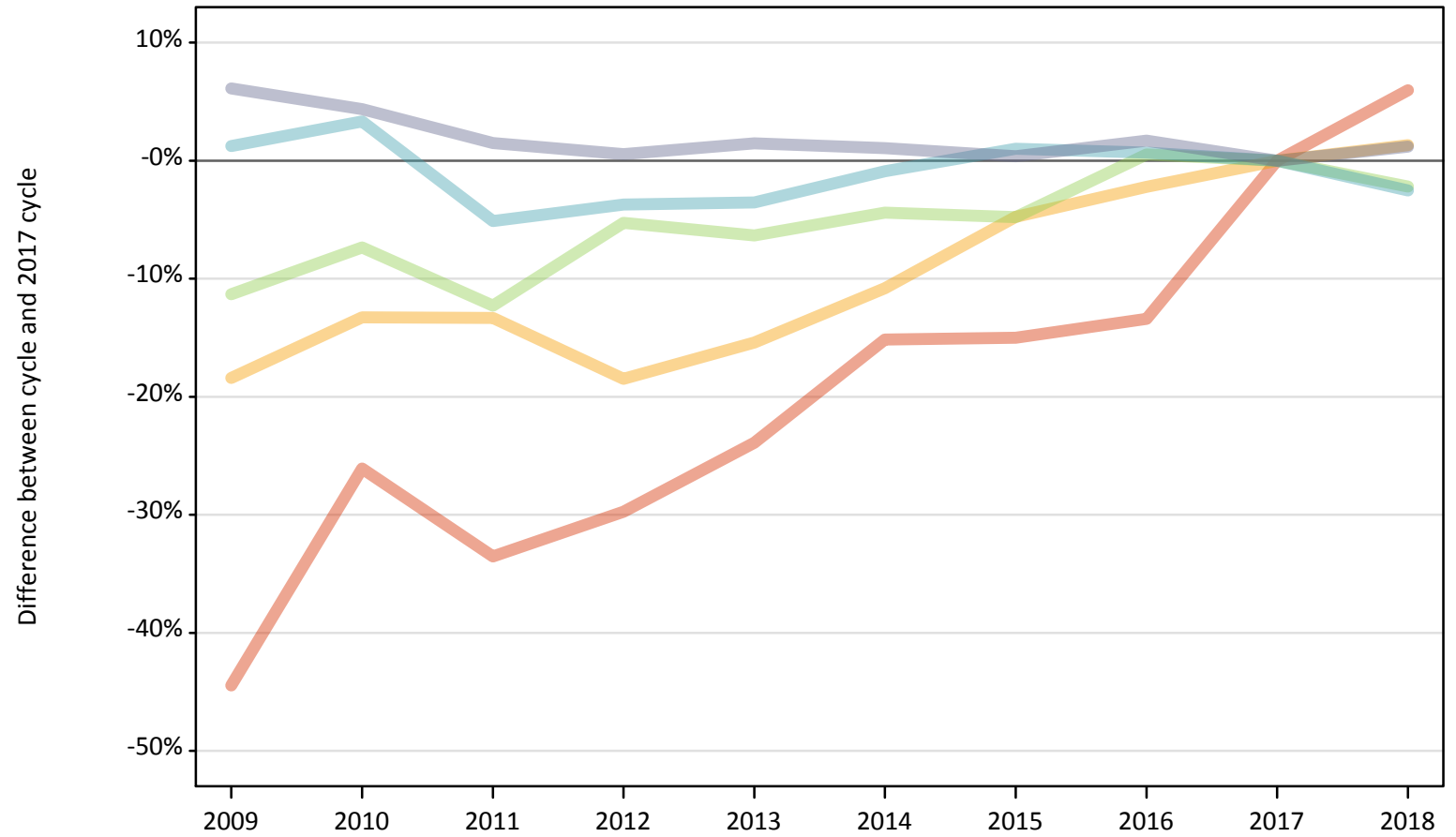
Placed 18 year old applicants: entry rate (indexed to 100 = Quintile 1)

Applicant Status	POLAR3	2009	2010	2011	2012	2013	2014	2015	2016	2017	2018
Placed	Quintile 1	100	100	100	100	100	100	100	100	100	100
	Quintile 2	196	162	188	166	162	167	142	169	158	157
	Quintile 3	250	215	227	217	207	203	199	210	190	198
	Quintile 4	329	275	296	279	258	251	241	256	244	246
	Quintile 5	439	333	383	366	338	316	308	311	298	312

P.13 Placed 18 year old applicants from Scotland by POLAR3 quintile: 4 days after A level results day

Placed 18 year old applicants: change relative to 2017 cycle totals

- Quintile 1
- Quintile 2
- Quintile 3
- Quintile 4
- Quintile 5



Note: The percentage change is not plotted in the above chart for groups with fewer than 30 placed applicants in any one cycle.

P.14 Placed 18 year old applicants from Scotland by POLAR3 quintile: 4 days after A level results day

Applicant Status	POLAR3	2009	2010	2011	2012	2013	2014	2015	2016	2017	2018
Placed	Quintile 1	380	510	460	480	520	580	580	590	690	730
	Quintile 2	1,250	1,330	1,330	1,250	1,300	1,370	1,460	1,500	1,540	1,560
	Quintile 3	2,020	2,110	1,990	2,150	2,130	2,170	2,160	2,290	2,270	2,220
	Quintile 4	3,420	3,490	3,210	3,250	3,260	3,350	3,410	3,400	3,380	3,300
	Quintile 5	7,030	6,920	6,730	6,660	6,720	6,700	6,650	6,740	6,630	6,710

P.15 Placed 18 year old applicants from Scotland by POLAR3 quintile: 4 days after A level results day

Placed 18 year old applicants: change relative to 2017 cycle totals

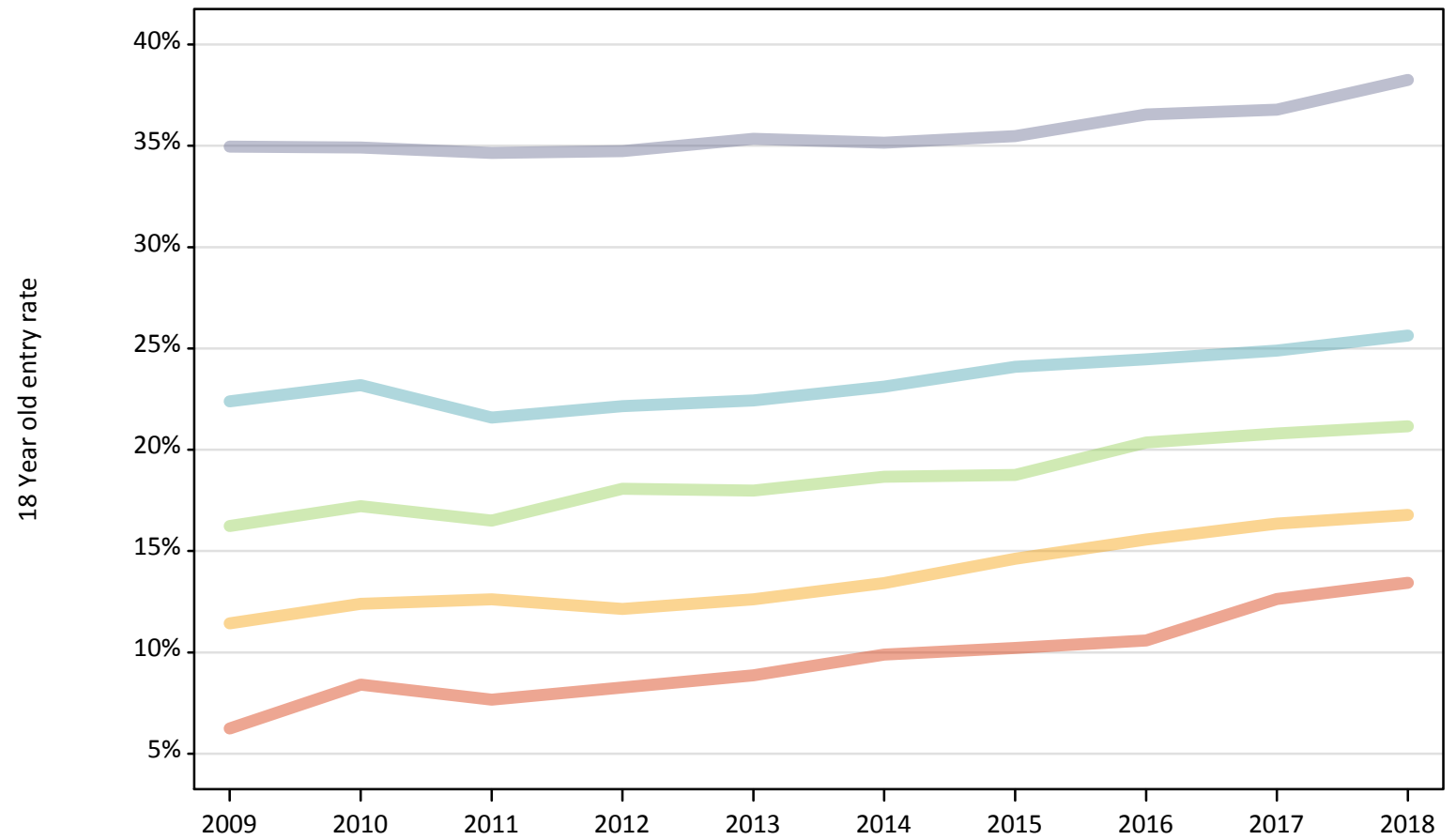
Applicant Status	POLAR3	2009	2010	2011	2012	2013	2014	2015	2016	2017	2018
Placed	Quintile 1	-44%	-26%	-34%	-30%	-24%	-15%	-15%	-13%	0%	6%
	Quintile 2	-18%	-13%	-13%	-18%	-15%	-11%	-5%	-2%	0%	1%
	Quintile 3	-11%	-7%	-12%	-5%	-6%	-4%	-5%	1%	0%	-2%
	Quintile 4	1%	3%	-5%	-4%	-4%	-1%	1%	1%	0%	-3%
	Quintile 5	6%	4%	1%	1%	1%	1%	0%	2%	0%	1%

Note: The percentage change is not recorded in the above table for groups with fewer than 10 placed applicants in that cycle or in the 2017 cycle.

P.16 Placed 18 year old applicants from Scotland by POLAR3 quintile: 4 days after A level results day

Placed 18 year old applicants: entry rate

- Quintile 1
- Quintile 2
- Quintile 3
- Quintile 4
- Quintile 5



P.17 Placed 18 year old applicants from Scotland by POLAR3 quintile: 4 days after A level results day

Placed 18 year old applicants: entry rate

Applicant Status	POLAR3	2009	2010	2011	2012	2013	2014	2015	2016	2017	2018
Placed	Quintile 1	6.3%	8.4%	7.7%	8.3%	8.9%	9.9%	10.2%	10.6%	12.6%	13.4%
	Quintile 2	11.4%	12.4%	12.6%	12.1%	12.6%	13.4%	14.6%	15.6%	16.4%	16.8%
	Quintile 3	16.2%	17.2%	16.5%	18.1%	18.0%	18.7%	18.8%	20.4%	20.8%	21.2%
	Quintile 4	22.4%	23.2%	21.6%	22.2%	22.4%	23.1%	24.1%	24.5%	24.9%	25.6%
	Quintile 5	35.0%	34.9%	34.7%	34.7%	35.4%	35.2%	35.5%	36.6%	36.8%	38.3%

P.18 Placed 18 year old applicants from Scotland by POLAR3 quintile: 4 days after A level results day

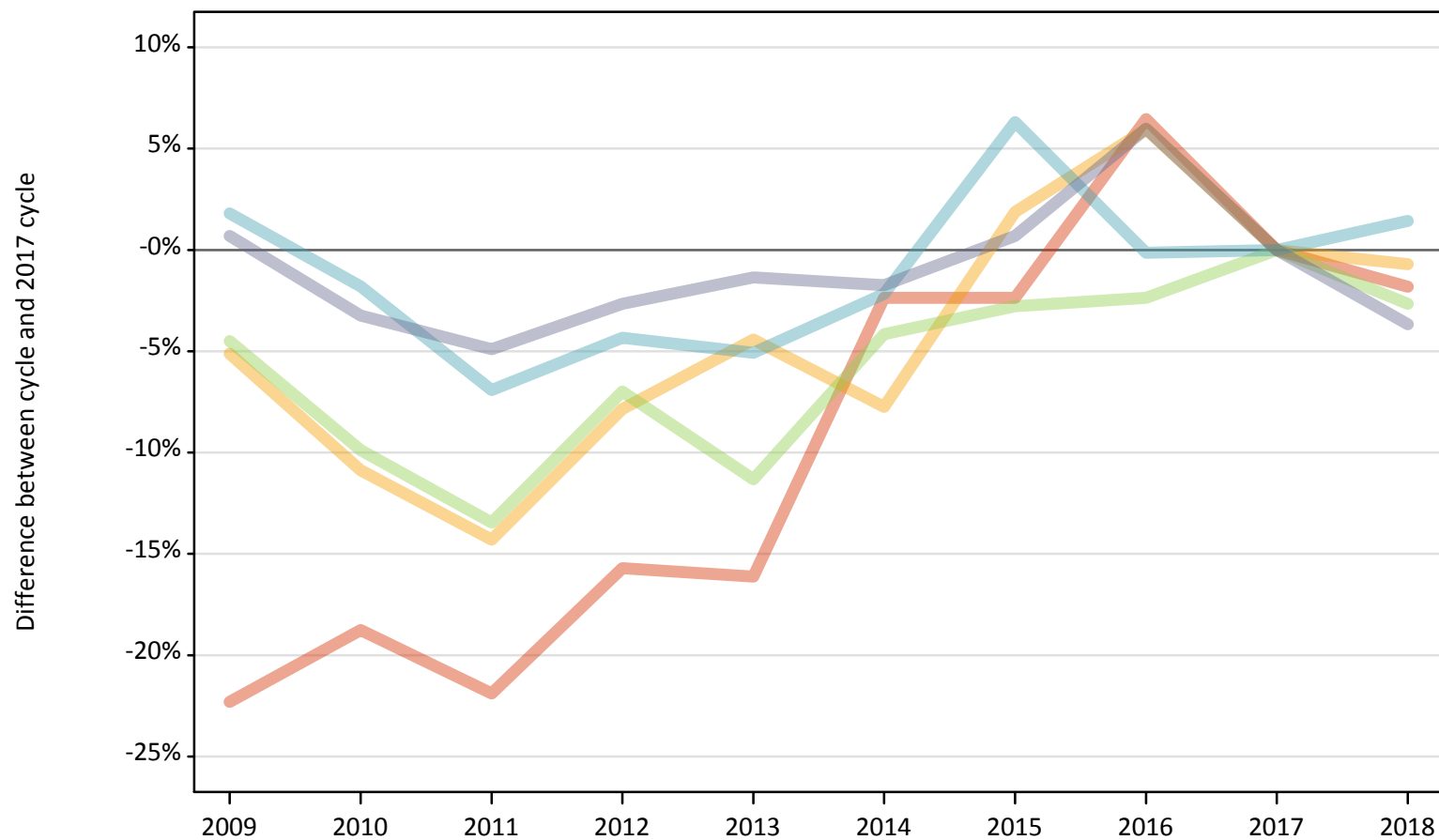
Placed 18 year old applicants: entry rate (indexed to 100 = Quintile 1)

Applicant Status	POLAR3	2009	2010	2011	2012	2013	2014	2015	2016	2017	2018
Placed	Quintile 1	100	100	100	100	100	100	100	100	100	100
	Quintile 2	183	147	165	147	142	136	143	147	129	125
	Quintile 3	260	205	215	219	203	189	184	192	165	158
	Quintile 4	358	276	282	268	253	234	236	231	197	191
	Quintile 5	559	415	452	421	399	356	347	345	291	285

P.19 Placed 18 year old applicants from Wales by POLAR3 quintile: 4 days after A level results day

Placed 18 year old applicants: change relative to 2017 cycle totals

- Quintile 1
- Quintile 2
- Quintile 3
- Quintile 4
- Quintile 5



Note: The percentage change is not plotted in the above chart for groups with fewer than 30 placed applicants in any one cycle.

P.20 Placed 18 year old applicants from Wales by POLAR3 quintile: 4 days after A level results day

Applicant Status	POLAR3	2009	2010	2011	2012	2013	2014	2015	2016	2017	2018
Placed	Quintile 1	1,120	1,170	1,120	1,210	1,210	1,410	1,410	1,530	1,440	1,410
	Quintile 2	1,910	1,800	1,730	1,860	1,930	1,860	2,050	2,140	2,020	2,000
	Quintile 3	1,650	1,560	1,500	1,610	1,540	1,660	1,680	1,690	1,730	1,690
	Quintile 4	2,210	2,130	2,020	2,080	2,060	2,120	2,310	2,170	2,170	2,200
	Quintile 5	2,610	2,510	2,470	2,520	2,560	2,550	2,610	2,750	2,590	2,500

P.21 Placed 18 year old applicants from Wales by POLAR3 quintile: 4 days after A level results day

Placed 18 year old applicants: change relative to 2017 cycle totals

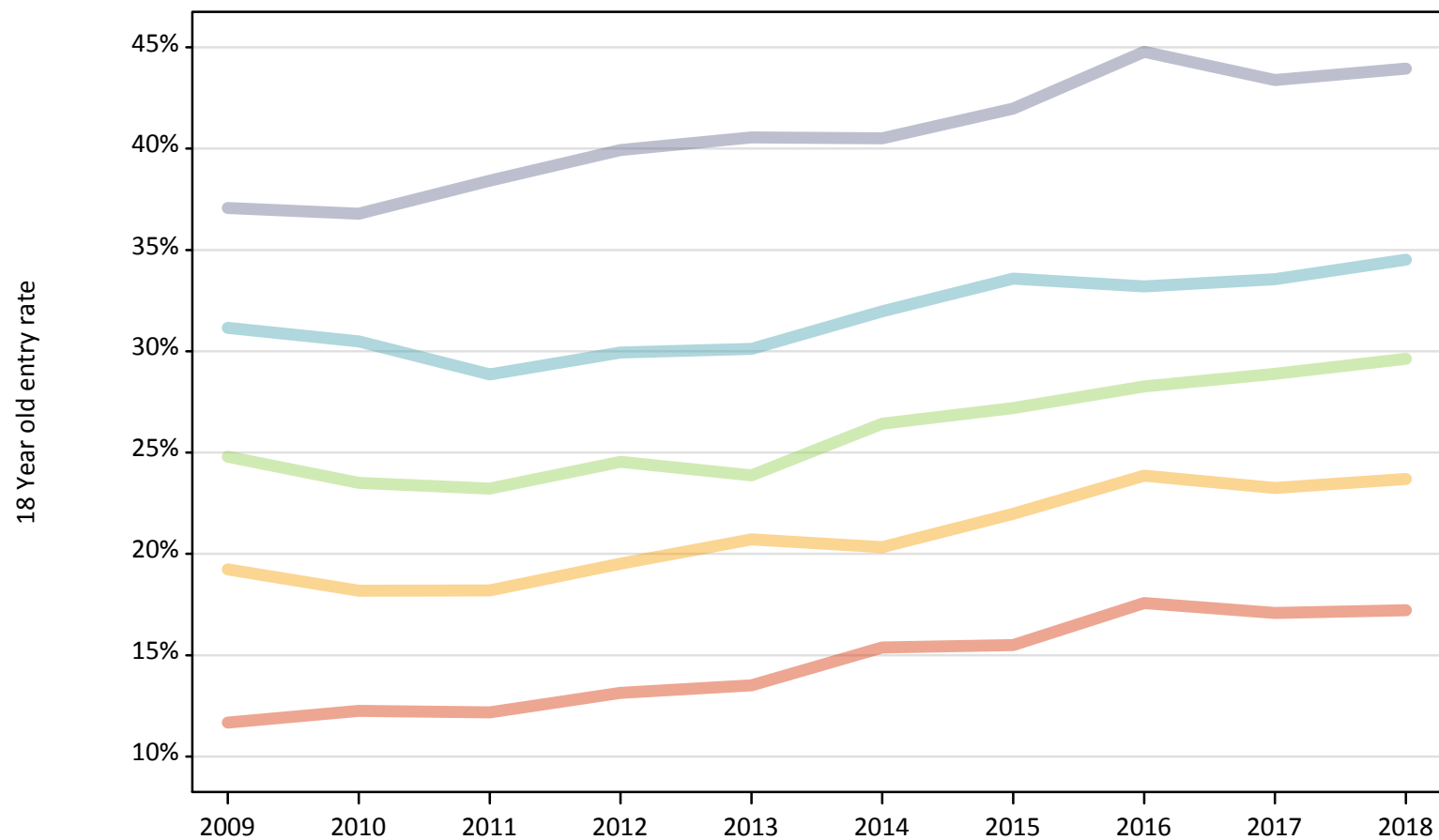
Applicant Status	POLAR3	2009	2010	2011	2012	2013	2014	2015	2016	2017	2018
Placed	Quintile 1	-22%	-19%	-22%	-16%	-16%	-2%	-2%	6%	0%	-2%
	Quintile 2	-5%	-11%	-14%	-8%	-4%	-8%	2%	6%	0%	-1%
	Quintile 3	-5%	-10%	-13%	-7%	-11%	-4%	-3%	-2%	0%	-3%
	Quintile 4	2%	-2%	-7%	-4%	-5%	-2%	6%	-0%	0%	1%
	Quintile 5	1%	-3%	-5%	-3%	-1%	-2%	1%	6%	0%	-4%

Note: The percentage change is not recorded in the above table for groups with fewer than 10 placed applicants in that cycle or in the 2017 cycle.

P.22 Placed 18 year old applicants from Wales by POLAR3 quintile: 4 days after A level results day

Placed 18 year old applicants: entry rate

- Quintile 1
- Quintile 2
- Quintile 3
- Quintile 4
- Quintile 5



P.23 Placed 18 year old applicants from Wales by POLAR3 quintile: 4 days after A level results day

Placed 18 year old applicants: entry rate

Applicant Status	POLAR3	2009	2010	2011	2012	2013	2014	2015	2016	2017	2018
Placed	Quintile 1	11.7%	12.3%	12.2%	13.1%	13.5%	15.4%	15.5%	17.6%	17.1%	17.2%
	Quintile 2	19.2%	18.2%	18.2%	19.5%	20.7%	20.3%	22.0%	23.9%	23.2%	23.7%
	Quintile 3	24.8%	23.5%	23.2%	24.5%	23.9%	26.4%	27.2%	28.3%	28.9%	29.6%
	Quintile 4	31.2%	30.5%	28.9%	29.9%	30.1%	32.0%	33.6%	33.2%	33.6%	34.5%
	Quintile 5	37.1%	36.8%	38.4%	39.9%	40.6%	40.5%	42.0%	44.8%	43.4%	44.0%

P.24 Placed 18 year old applicants from Wales by POLAR3 quintile: 4 days after A level results day

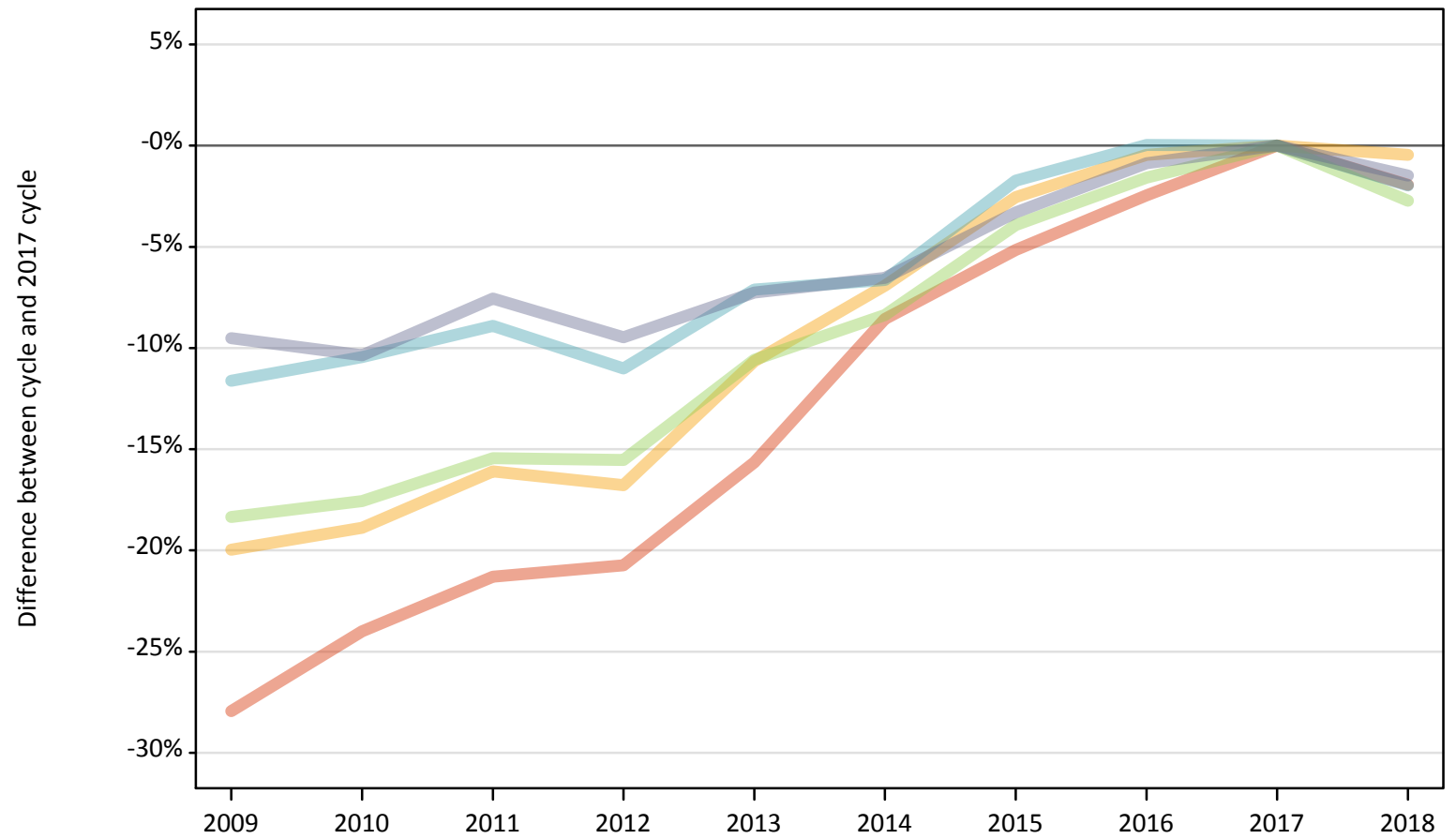
Placed 18 year old applicants: entry rate (indexed to 100 = Quintile 1)

Applicant Status	POLAR3	2009	2010	2011	2012	2013	2014	2015	2016	2017	2018
Placed	Quintile 1	100	100	100	100	100	100	100	100	100	100
	Quintile 2	165	148	149	148	153	132	142	136	136	138
	Quintile 3	212	192	191	187	177	172	176	161	169	172
	Quintile 4	267	249	237	228	223	208	217	189	196	201
	Quintile 5	318	300	316	304	300	264	271	255	254	255

P.25 Placed 18 year old applicants from the UK by POLAR3 quintile: 4 days after A level results day

Placed 18 year old applicants: change relative to 2017 cycle totals

- Quintile 1
- Quintile 2
- Quintile 3
- Quintile 4
- Quintile 5



Note: The percentage change is not plotted in the above chart for groups with fewer than 30 placed applicants in any one cycle.

P.26 Placed 18 year old applicants from the UK by POLAR3 quintile: 4 days after A level results day

Applicant Status	POLAR3	2009	2010	2011	2012	2013	2014	2015	2016	2017	2018
Placed	Quintile 1	17,640	18,600	19,260	19,400	20,650	22,380	23,220	23,880	24,480	24,000
	Quintile 2	27,670	28,040	29,000	28,770	30,890	32,180	33,690	34,410	34,570	34,410
	Quintile 3	36,030	36,380	37,310	37,280	39,460	40,430	42,400	43,430	44,130	42,920
	Quintile 4	46,850	47,470	48,290	47,170	49,240	49,490	52,090	53,030	53,010	51,970
	Quintile 5	66,010	65,400	67,440	66,040	67,650	68,190	70,540	72,320	72,950	71,880

P.27 Placed 18 year old applicants from the UK by POLAR3 quintile: 4 days after A level results day

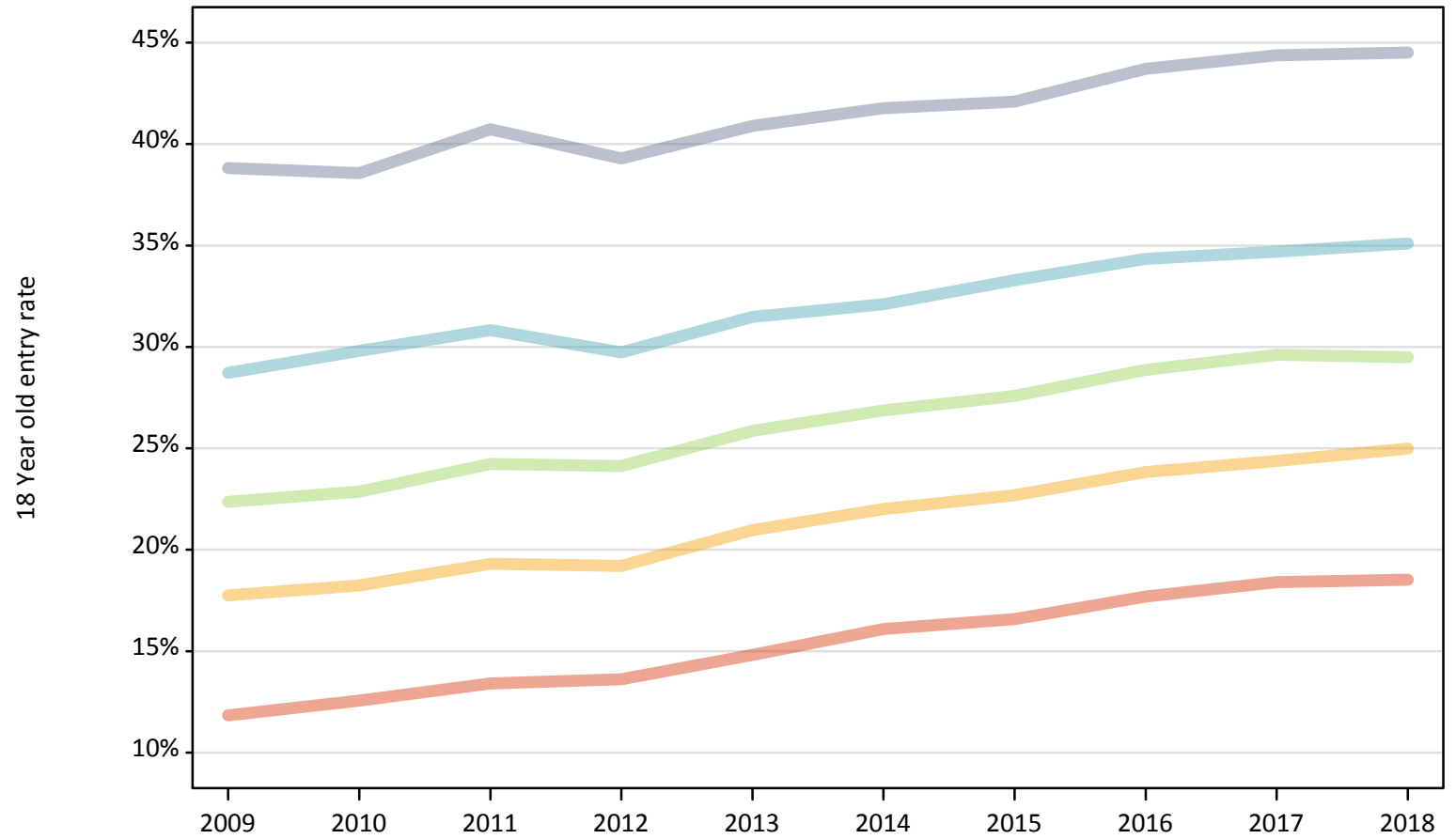
Placed 18 year old applicants: change relative to 2017 cycle totals

Applicant Status	POLAR3	2009	2010	2011	2012	2013	2014	2015	2016	2017	2018
Placed	Quintile 1	-28%	-24%	-21%	-21%	-16%	-9%	-5%	-2%	0%	-2%
	Quintile 2	-20%	-19%	-16%	-17%	-11%	-7%	-3%	-0%	0%	-0%
	Quintile 3	-18%	-18%	-15%	-16%	-11%	-8%	-4%	-2%	0%	-3%
	Quintile 4	-12%	-10%	-9%	-11%	-7%	-7%	-2%	0%	0%	-2%
	Quintile 5	-10%	-10%	-8%	-9%	-7%	-7%	-3%	-1%	0%	-1%

Note: The percentage change is not recorded in the above table for groups with fewer than 10 placed applicants in that cycle or in the 2017 cycle.

P.28 Placed 18 year old applicants from the UK by POLAR3 quintile: 4 days after A level results day
Placed 18 year old applicants: entry rate

- Quintile 1
- Quintile 2
- Quintile 3
- Quintile 4
- Quintile 5



P.29 Placed 18 year old applicants from the UK by POLAR3 quintile: 4 days after A level results day

Placed 18 year old applicants: entry rate

Applicant Status	POLAR3	2009	2010	2011	2012	2013	2014	2015	2016	2017	2018
Placed	Quintile 1	11.8%	12.6%	13.4%	13.6%	14.8%	16.1%	16.6%	17.7%	18.4%	18.5%
	Quintile 2	17.8%	18.2%	19.3%	19.2%	21.0%	22.0%	22.7%	23.8%	24.4%	25.0%
	Quintile 3	22.4%	22.9%	24.2%	24.1%	25.9%	26.9%	27.6%	28.9%	29.6%	29.5%
	Quintile 4	28.7%	29.8%	30.8%	29.7%	31.5%	32.1%	33.3%	34.3%	34.7%	35.1%
	Quintile 5	38.8%	38.6%	40.7%	39.3%	40.9%	41.8%	42.1%	43.7%	44.4%	44.5%

P.30 Placed 18 year old applicants from the UK by POLAR3 quintile: 4 days after A level results day

Placed 18 year old applicants: entry rate (indexed to 100 = Quintile 1)

Applicant Status	POLAR3	2009	2010	2011	2012	2013	2014	2015	2016	2017	2018
Placed	Quintile 1	100	100	100	100	100	100	100	100	100	100
	Quintile 2	150	145	144	141	142	137	137	135	132	135
	Quintile 3	189	182	181	177	175	167	166	163	161	159
	Quintile 4	243	237	230	218	212	200	201	194	188	189
	Quintile 5	328	307	304	289	276	260	254	247	241	240