

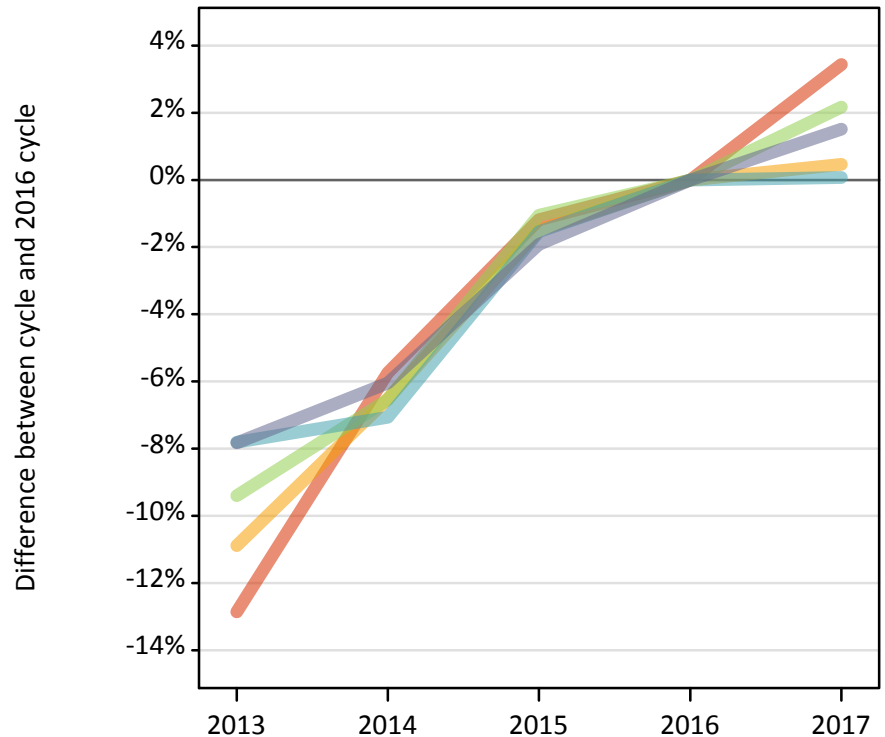
# Daily Clearing Analysis: POLAR3

**Analysis at 00:05 on Friday 1 September 2017 (15 days after A level results day)**

**P.1 Placed 18 year old applicants from England by POLAR3 quintile: 15 days after A level results day**

Placed 18 year old applicants: change relative to 2016 cycle totals

- Quintile 1
- Quintile 2
- Quintile 3
- Quintile 4
- Quintile 5



**P.2 Placed 18 year old applicants from England by POLAR3 quintile: 15 days after A level results day**

Applicant Status	POLAR3	2013	2014	2015	2016	2017
Placed	Quintile 1	19,500	21,090	22,110	22,370	23,140
	Quintile 2	28,240	29,630	31,210	31,690	31,840
	Quintile 3	36,370	37,520	39,720	40,140	41,010
	Quintile 4	43,400	43,750	46,350	47,080	47,110
	Quintile 5	57,180	58,290	60,840	62,030	62,970

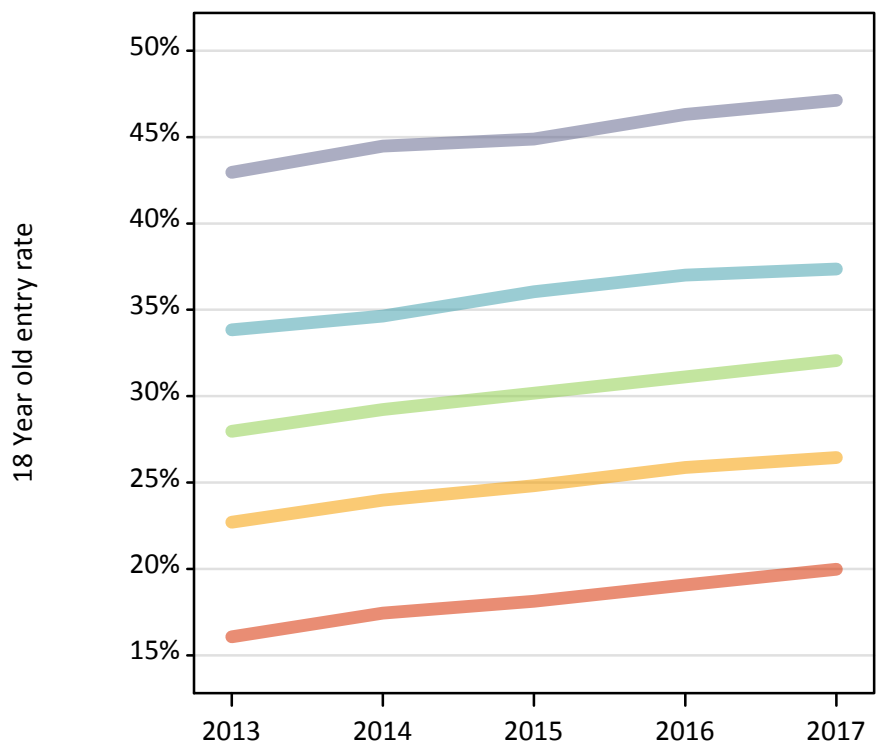
**P.3 Placed 18 year old applicants from England by POLAR3 quintile: 15 days after A level results day**

Placed 18 year old applicants: change relative to 2016 cycle totals

Applicant Status	POLAR3	2013	2014	2015	2016	2017
Placed	Quintile 1	-13%	-6%	-1%	0%	3%
	Quintile 2	-11%	-7%	-1%	0%	0%
	Quintile 3	-9%	-7%	-1%	0%	2%
	Quintile 4	-8%	-7%	-2%	0%	0%
	Quintile 5	-8%	-6%	-2%	0%	2%

**P.4 Placed 18 year old applicants from England by POLAR3 quintile: 15 days after A level results day**

Placed 18 year old applicants: entry rate



**P.5 Placed 18 year old applicants from England by POLAR3 quintile: 15 days after A level results day**

Placed 18 year old applicants: entry rate

Applicant Status	POLAR3	2013	2014	2015	2016	2017
Placed	Quintile 1	16.1%	17.4%	18.1%	19.1%	20.0%
	Quintile 2	22.7%	24.0%	24.8%	25.9%	26.4%
	Quintile 3	28.0%	29.2%	30.2%	31.1%	32.1%
	Quintile 4	33.8%	34.6%	36.1%	37.0%	37.4%
	Quintile 5	43.0%	44.5%	44.9%	46.3%	47.1%

**P.6 Placed 18 year old applicants from England by POLAR3 quintile: 15 days after A level results day**

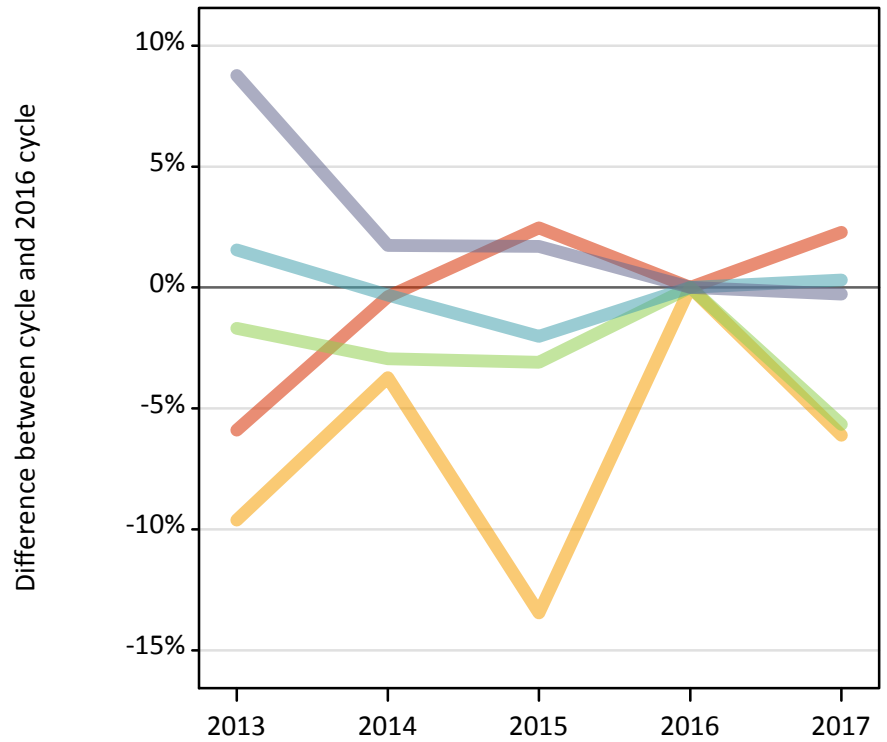
Placed 18 year old applicants: entry rate (indexed to 100 = Quintile 1)

Applicant Status	POLAR3	2013	2014	2015	2016	2017
Placed	Quintile 1	100	100	100	100	100
	Quintile 2	141	137	137	136	132
	Quintile 3	174	167	166	163	160
	Quintile 4	211	199	199	194	187
	Quintile 5	267	255	248	243	236

**P.7 Placed 18 year old applicants from Northern Ireland by POLAR3 quintile: 15 days after A level results day**

Placed 18 year old applicants: change relative to 2016 cycle totals

- Quintile 1
- Quintile 2
- Quintile 3
- Quintile 4
- Quintile 5



**P.8 Placed 18 year old applicants from Northern Ireland by POLAR3 quintile: 15 days after A level results day**

Applicant Status	POLAR3	2013	2014	2015	2016	2017
Placed	Quintile 1	500	520	540	530	540
	Quintile 2	800	850	770	880	830
	Quintile 3	1,340	1,320	1,320	1,360	1,280
	Quintile 4	2,620	2,580	2,530	2,580	2,590
	Quintile 5	3,510	3,280	3,280	3,230	3,220

**P.9 Placed 18 year old applicants from Northern Ireland by POLAR3 quintile: 15 days after A level results day**

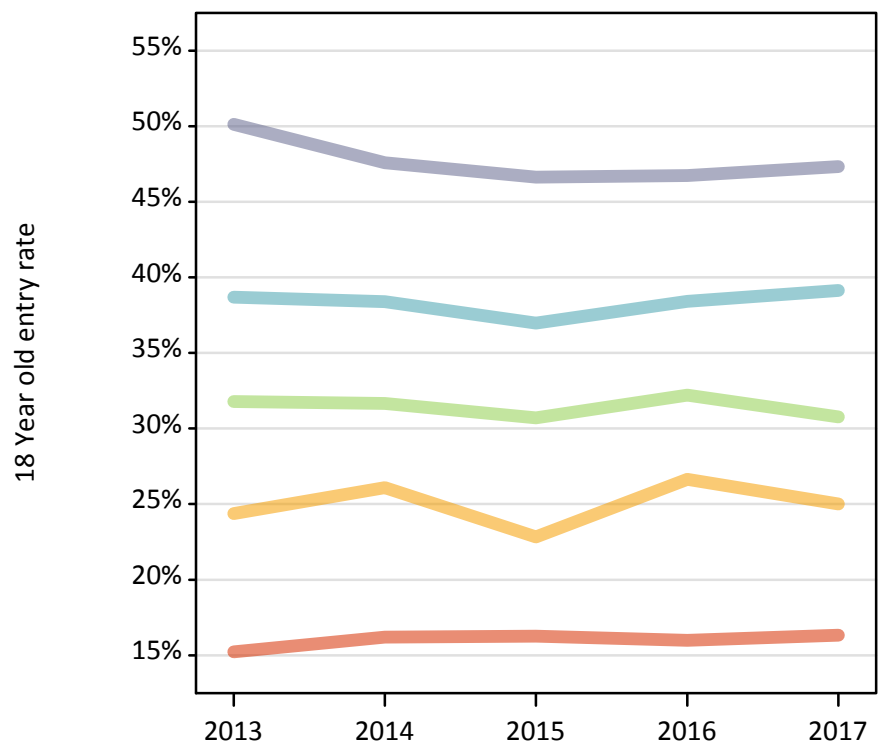
Placed 18 year old applicants: change relative to 2016 cycle totals

Applicant Status	POLAR3	2013	2014	2015	2016	2017
Placed	Quintile 1	-6%	-0%	2%	0%	2%
	Quintile 2	-10%	-4%	-13%	0%	-6%
	Quintile 3	-2%	-3%	-3%	0%	-6%
	Quintile 4	2%	-0%	-2%	0%	0%
	Quintile 5	9%	2%	2%	0%	-0%

**P.10 Placed 18 year old applicants from Northern Ireland by POLAR3 quintile: 15 days after A level results day**

Placed 18 year old applicants: entry rate

- Quintile 1
- Quintile 2
- Quintile 3
- Quintile 4
- Quintile 5



**P.11 Placed 18 year old applicants from Northern Ireland by POLAR3 quintile: 15 days after A level results day**

Placed 18 year old applicants: entry rate

Applicant Status	POLAR3	2013	2014	2015	2016	2017
Placed	Quintile 1	15.2%	16.2%	16.3%	16.0%	16.3%
	Quintile 2	24.4%	26.1%	22.8%	26.6%	25.0%
	Quintile 3	31.8%	31.7%	30.7%	32.2%	30.8%
	Quintile 4	38.7%	38.4%	37.0%	38.4%	39.1%
	Quintile 5	50.1%	47.6%	46.6%	46.7%	47.3%

**P.12 Placed 18 year old applicants from Northern Ireland by POLAR3 quintile: 15 days after A level results day**

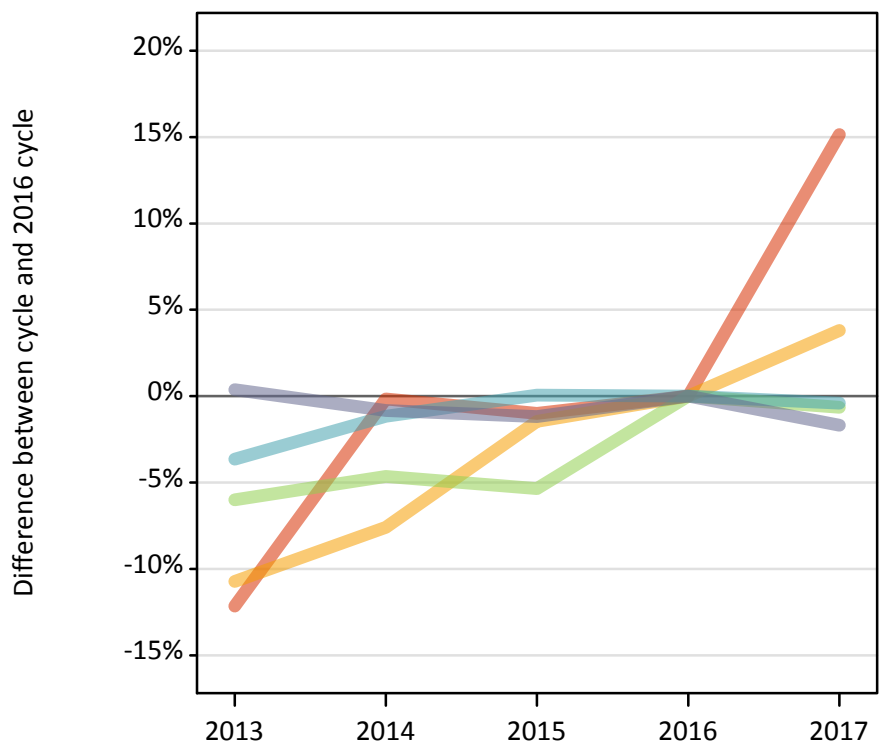
Placed 18 year old applicants: entry rate (indexed to 100 = Quintile 1)

Applicant Status	POLAR3	2013	2014	2015	2016	2017
Placed	Quintile 1	100	100	100	100	100
	Quintile 2	160	161	140	167	153
	Quintile 3	209	195	189	201	189
	Quintile 4	254	237	227	240	240
	Quintile 5	329	294	287	292	290

**P.13 Placed 18 year old applicants from Scotland by POLAR3 quintile: 15 days after A level results day**

Placed 18 year old applicants: change relative to 2016 cycle totals

- Quintile 1
- Quintile 2
- Quintile 3
- Quintile 4
- Quintile 5



**P.14 Placed 18 year old applicants from Scotland by POLAR3 quintile: 15 days after A level results day**

Applicant Status	POLAR3	2013	2014	2015	2016	2017
Placed	Quintile 1	530	600	600	600	690
	Quintile 2	1,340	1,390	1,480	1,500	1,560
	Quintile 3	2,160	2,200	2,180	2,300	2,290
	Quintile 4	3,300	3,390	3,430	3,430	3,420
	Quintile 5	6,810	6,730	6,700	6,780	6,670

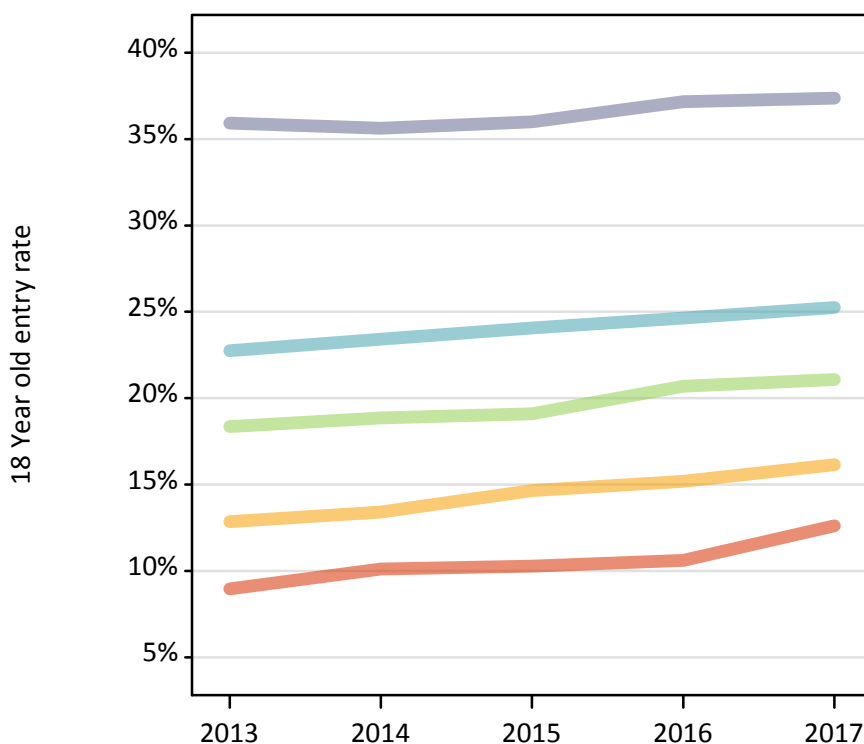
**P.15 Placed 18 year old applicants from Scotland by POLAR3 quintile: 15 days after A level results day**

Placed 18 year old applicants: change relative to 2016 cycle totals

Applicant Status	POLAR3	2013	2014	2015	2016	2017
Placed	Quintile 1	-12%	-0%	-1%	0%	15%
	Quintile 2	-11%	-8%	-1%	0%	4%
	Quintile 3	-6%	-5%	-5%	0%	-1%
	Quintile 4	-4%	-1%	0%	0%	-0%
	Quintile 5	0%	-1%	-1%	0%	-2%

**P.16 Placed 18 year old applicants from Scotland by POLAR3 quintile: 15 days after A level results day**

Placed 18 year old applicants: entry rate



**P.17 Placed 18 year old applicants from Scotland by POLAR3 quintile: 15 days after A level results day**

Placed 18 year old applicants: entry rate

Applicant Status	POLAR3	2013	2014	2015	2016	2017
Placed	Quintile 1	9.0%	10.1%	10.3%	10.6%	12.6%
	Quintile 2	12.9%	13.4%	14.6%	15.2%	16.1%
	Quintile 3	18.4%	18.8%	19.1%	20.7%	21.1%
	Quintile 4	22.8%	23.4%	24.1%	24.6%	25.3%
	Quintile 5	35.9%	35.6%	36.0%	37.2%	37.4%

**P.18 Placed 18 year old applicants from Scotland by POLAR3 quintile: 15 days after A level results day**

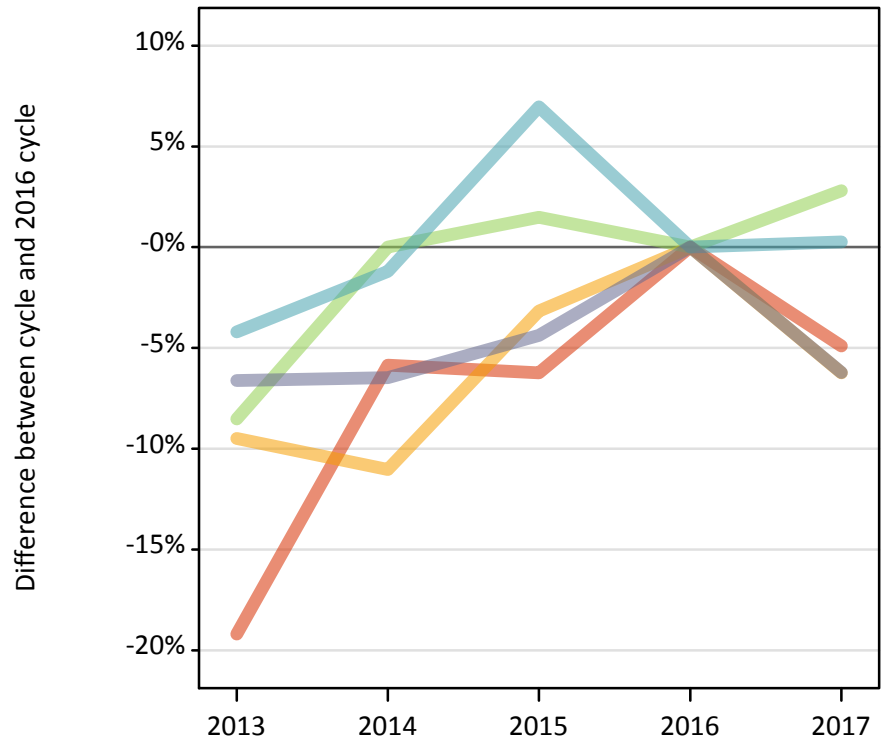
Placed 18 year old applicants: entry rate (indexed to 100 = Quintile 1)

Applicant Status	POLAR3	2013	2014	2015	2016	2017
Placed	Quintile 1	100	100	100	100	100
	Quintile 2	144	133	142	143	128
	Quintile 3	205	186	186	195	167
	Quintile 4	254	231	234	232	200
	Quintile 5	401	352	350	350	296

**P.19 Placed 18 year old applicants from Wales by POLAR3 quintile: 15 days after A level results day**

Placed 18 year old applicants: change relative to 2016 cycle totals

- Quintile 1
- Quintile 2
- Quintile 3
- Quintile 4
- Quintile 5



**P.20 Placed 18 year old applicants from Wales by POLAR3 quintile: 15 days after A level results day**

Applicant Status	POLAR3	2013	2014	2015	2016	2017
Placed	Quintile 1	1,270	1,480	1,480	1,570	1,500
	Quintile 2	2,000	1,970	2,140	2,210	2,070
	Quintile 3	1,600	1,750	1,780	1,750	1,800
	Quintile 4	2,150	2,210	2,400	2,240	2,250
	Quintile 5	2,640	2,650	2,710	2,830	2,650

**P.21 Placed 18 year old applicants from Wales by POLAR3 quintile: 15 days after A level results day**

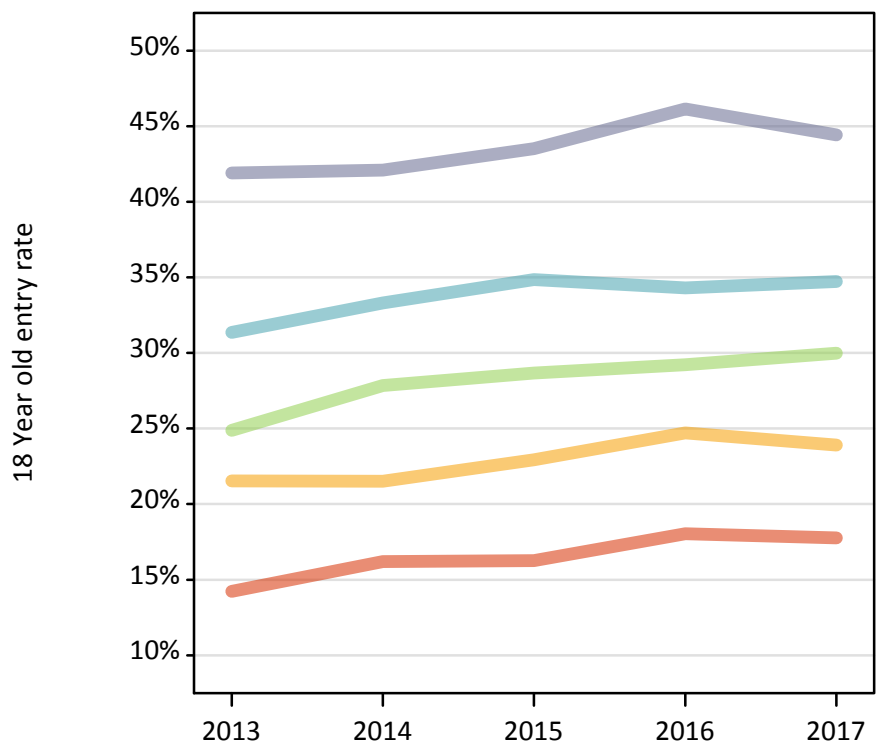
Placed 18 year old applicants: change relative to 2016 cycle totals

Applicant Status	POLAR3	2013	2014	2015	2016	2017
Placed	Quintile 1	-19%	-6%	-6%	0%	-5%
	Quintile 2	-9%	-11%	-3%	0%	-6%
	Quintile 3	-9%	0%	1%	0%	3%
	Quintile 4	-4%	-1%	7%	0%	0%
	Quintile 5	-7%	-6%	-4%	0%	-6%

**P.22 Placed 18 year old applicants from Wales by POLAR3 quintile: 15 days after A level results day**

Placed 18 year old applicants: entry rate

- Quintile 1
- Quintile 2
- Quintile 3
- Quintile 4
- Quintile 5



**P.23 Placed 18 year old applicants from Wales by POLAR3 quintile: 15 days after A level results day**

Placed 18 year old applicants: entry rate

Applicant Status	POLAR3	2013	2014	2015	2016	2017
Placed	Quintile 1	14.2%	16.2%	16.3%	18.0%	17.8%
	Quintile 2	21.5%	21.5%	22.9%	24.7%	23.9%
	Quintile 3	24.9%	27.8%	28.7%	29.2%	30.0%
	Quintile 4	31.4%	33.3%	34.9%	34.3%	34.7%
	Quintile 5	41.9%	42.1%	43.5%	46.1%	44.4%

**P.24 Placed 18 year old applicants from Wales by POLAR3 quintile: 15 days after A level results day**

Placed 18 year old applicants: entry rate (indexed to 100 = Quintile 1)

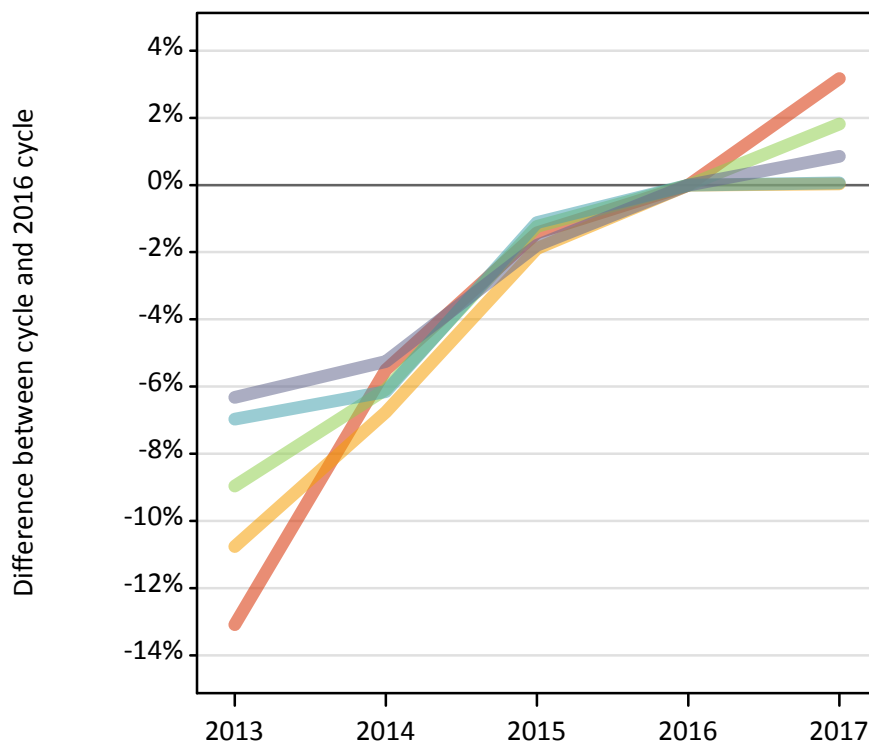
Applicant Status	POLAR3	2013	2014	2015	2016	2017
Placed	Quintile 1	100	100	100	100	100
	Quintile 2	151	133	141	137	135
	Quintile 3	175	172	176	162	169
	Quintile 4	220	206	214	190	196
	Quintile 5	295	260	268	256	250



**P.25 Placed 18 year old applicants from the UK by POLAR3 quintile: 15 days after A level results day**

Placed 18 year old applicants: change relative to 2016 cycle totals

- Quintile 1
- Quintile 2
- Quintile 3
- Quintile 4
- Quintile 5



**P.26 Placed 18 year old applicants from the UK by POLAR3 quintile: 15 days after A level results day**

Applicant Status	POLAR3	2013	2014	2015	2016	2017
Placed	Quintile 1	21,790	23,690	24,720	25,070	25,870
	Quintile 2	32,380	33,830	35,600	36,280	36,300
	Quintile 3	41,470	42,780	44,990	45,550	46,380
	Quintile 4	51,470	51,930	54,710	55,330	55,360
	Quintile 5	70,140	70,940	73,530	74,870	75,510

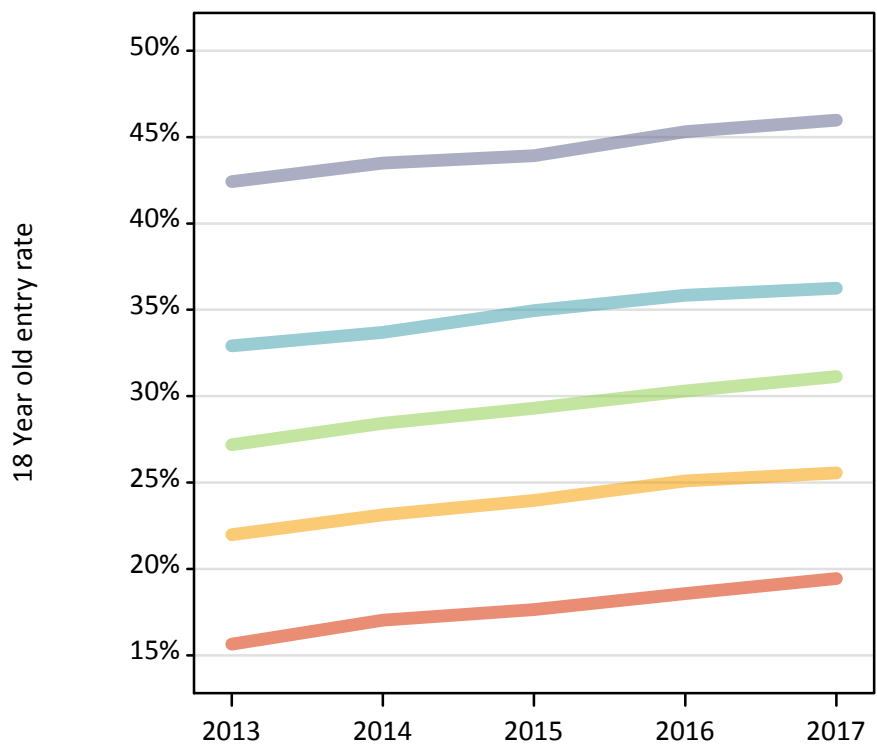
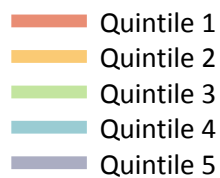
**P.27 Placed 18 year old applicants from the UK by POLAR3 quintile: 15 days after A level results day**

Placed 18 year old applicants: change relative to 2016 cycle totals

Applicant Status	POLAR3	2013	2014	2015	2016	2017
Placed	Quintile 1	-13%	-6%	-1%	0%	3%
	Quintile 2	-11%	-7%	-2%	0%	0%
	Quintile 3	-9%	-6%	-1%	0%	2%
	Quintile 4	-7%	-6%	-1%	0%	0%
	Quintile 5	-6%	-5%	-2%	0%	1%

**P.28 Placed 18 year old applicants from the UK by POLAR3 quintile: 15 days after A level results day**

Placed 18 year old applicants: entry rate



**P.29 Placed 18 year old applicants from the UK by POLAR3 quintile: 15 days after A level results day**

Placed 18 year old applicants: entry rate

Applicant Status	POLAR3	2013	2014	2015	2016	2017
Placed	Quintile 1	15.6%	17.0%	17.6%	18.6%	19.4%
	Quintile 2	22.0%	23.1%	24.0%	25.1%	25.6%
	Quintile 3	27.2%	28.4%	29.3%	30.3%	31.1%
	Quintile 4	32.9%	33.7%	34.9%	35.8%	36.2%
	Quintile 5	42.4%	43.5%	43.9%	45.3%	46.0%

**P.30 Placed 18 year old applicants from the UK by POLAR3 quintile: 15 days after A level results day**

Placed 18 year old applicants: entry rate (indexed to 100 = Quintile 1)

Applicant Status	POLAR3	2013	2014	2015	2016	2017
Placed	Quintile 1	100	100	100	100	100
	Quintile 2	141	136	136	135	131
	Quintile 3	174	167	166	163	160
	Quintile 4	210	198	198	193	186
	Quintile 5	271	255	249	244	236