

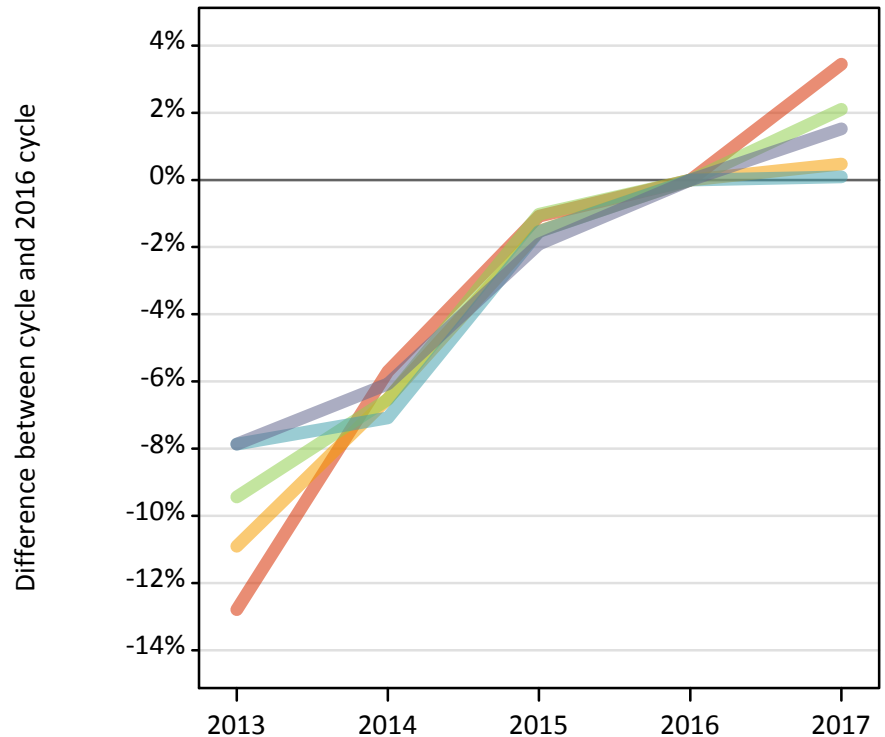
Daily Clearing Analysis: POLAR3

Analysis at 00:05 on Thursday 31 August 2017 (14 days after A level results day)

P.1 Placed 18 year old applicants from England by POLAR3 quintile: 14 days after A level results day

Placed 18 year old applicants: change relative to 2016 cycle totals

- Quintile 1
- Quintile 2
- Quintile 3
- Quintile 4
- Quintile 5



P.2 Placed 18 year old applicants from England by POLAR3 quintile: 14 days after A level results day

Applicant Status	POLAR3	2013	2014	2015	2016	2017
Placed	Quintile 1	19,450	21,030	22,060	22,300	23,070
	Quintile 2	28,170	29,560	31,140	31,620	31,770
	Quintile 3	36,290	37,450	39,660	40,070	40,910
	Quintile 4	43,320	43,680	46,290	47,010	47,060
	Quintile 5	57,130	58,240	60,820	62,010	62,950

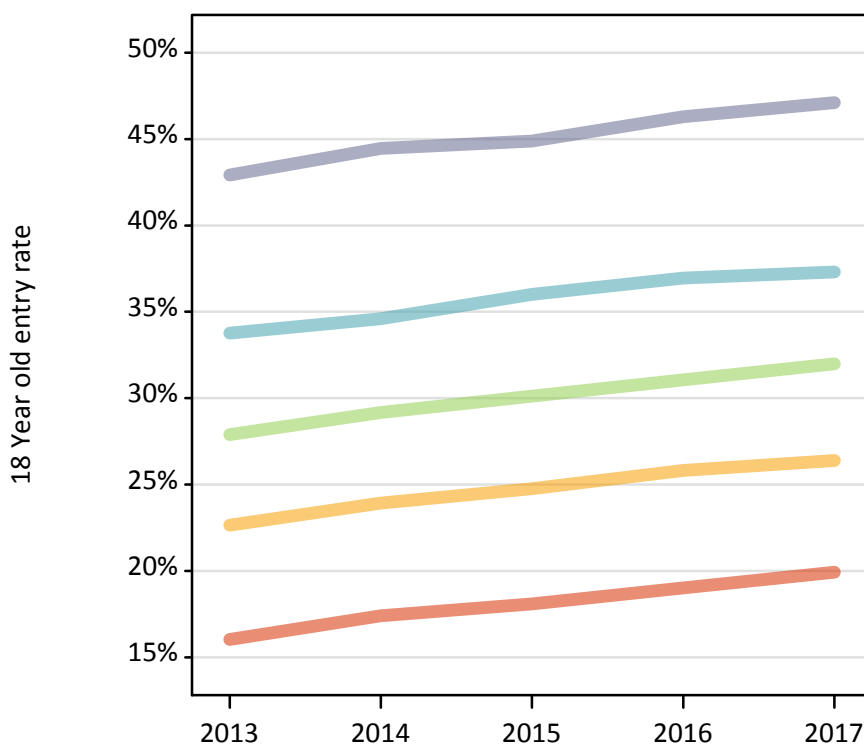
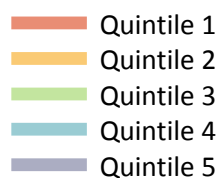
P.3 Placed 18 year old applicants from England by POLAR3 quintile: 14 days after A level results day

Placed 18 year old applicants: change relative to 2016 cycle totals

Applicant Status	POLAR3	2013	2014	2015	2016	2017
Placed	Quintile 1	-13%	-6%	-1%	0%	3%
	Quintile 2	-11%	-7%	-2%	0%	0%
	Quintile 3	-9%	-7%	-1%	0%	2%
	Quintile 4	-8%	-7%	-2%	0%	0%
	Quintile 5	-8%	-6%	-2%	0%	2%

P.4 Placed 18 year old applicants from England by POLAR3 quintile: 14 days after A level results day

Placed 18 year old applicants: entry rate



P.5 Placed 18 year old applicants from England by POLAR3 quintile: 14 days after A level results day

Placed 18 year old applicants: entry rate

Applicant Status	POLAR3	2013	2014	2015	2016	2017
Placed	Quintile 1	16.0%	17.4%	18.1%	19.0%	19.9%
	Quintile 2	22.7%	23.9%	24.8%	25.8%	26.4%
	Quintile 3	27.9%	29.2%	30.1%	31.1%	32.0%
	Quintile 4	33.8%	34.6%	36.0%	37.0%	37.3%
	Quintile 5	42.9%	44.4%	44.9%	46.3%	47.1%

P.6 Placed 18 year old applicants from England by POLAR3 quintile: 14 days after A level results day

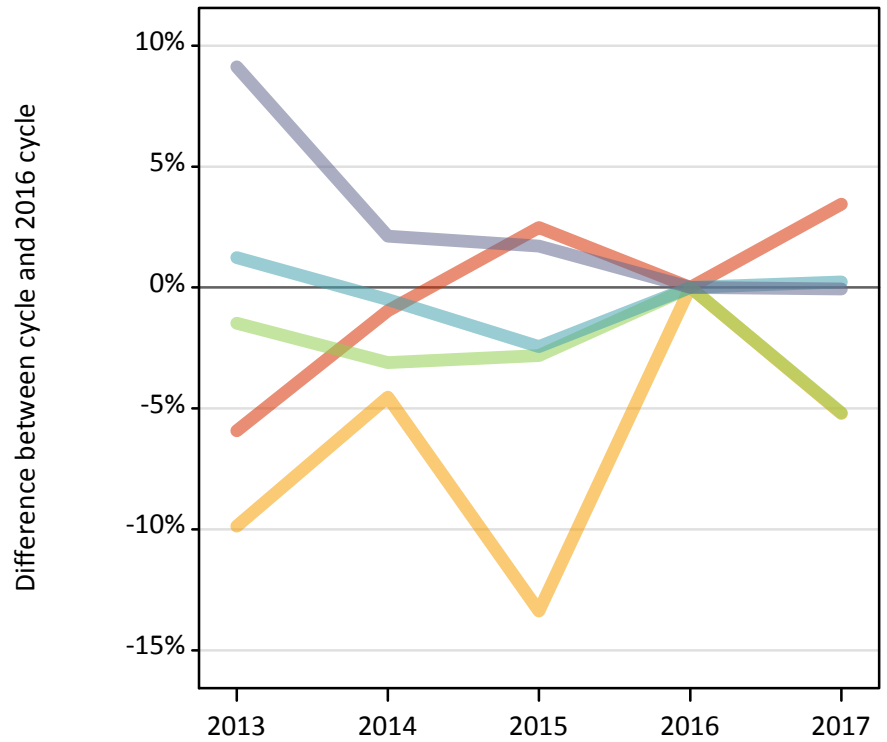
Placed 18 year old applicants: entry rate (indexed to 100 = Quintile 1)

Applicant Status	POLAR3	2013	2014	2015	2016	2017
Placed	Quintile 1	100	100	100	100	100
	Quintile 2	141	137	137	136	132
	Quintile 3	174	168	166	163	160
	Quintile 4	211	199	199	194	187
	Quintile 5	268	255	248	244	236

P.7 Placed 18 year old applicants from Northern Ireland by POLAR3 quintile: 14 days after A level results day

Placed 18 year old applicants: change relative to 2016 cycle totals

- Quintile 1
- Quintile 2
- Quintile 3
- Quintile 4
- Quintile 5



P.8 Placed 18 year old applicants from Northern Ireland by POLAR3 quintile: 14 days after A level results day

Applicant Status	POLAR3	2013	2014	2015	2016	2017
Placed	Quintile 1	490	520	540	520	540
	Quintile 2	800	840	760	880	840
	Quintile 3	1,330	1,310	1,310	1,350	1,280
	Quintile 4	2,620	2,570	2,520	2,580	2,590
	Quintile 5	3,510	3,280	3,270	3,210	3,210

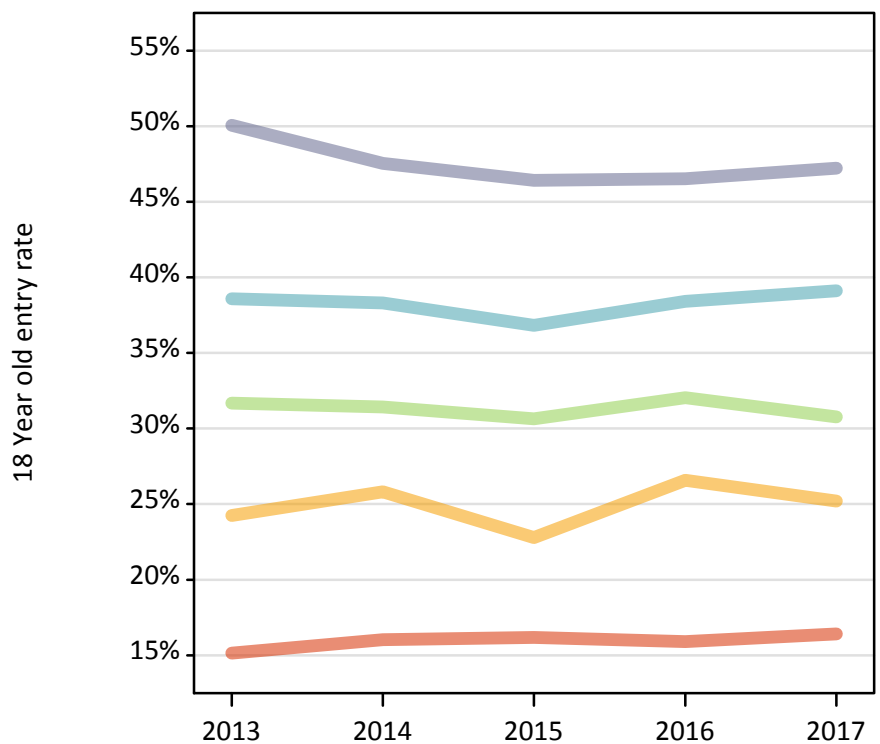
P.9 Placed 18 year old applicants from Northern Ireland by POLAR3 quintile: 14 days after A level results day

Placed 18 year old applicants: change relative to 2016 cycle totals

Applicant Status	POLAR3	2013	2014	2015	2016	2017
Placed	Quintile 1	-6%	-1%	2%	0%	3%
	Quintile 2	-10%	-5%	-13%	0%	-5%
	Quintile 3	-1%	-3%	-3%	0%	-5%
	Quintile 4	1%	-1%	-2%	0%	0%
	Quintile 5	9%	2%	2%	0%	-0%

P.10 Placed 18 year old applicants from Northern Ireland by POLAR3 quintile: 14 days after A level results day

Placed 18 year old applicants: entry rate



P.11 Placed 18 year old applicants from Northern Ireland by POLAR3 quintile: 14 days after A level results day

Placed 18 year old applicants: entry rate

Applicant Status	POLAR3	2013	2014	2015	2016	2017
Placed	Quintile 1	15.1%	16.0%	16.2%	15.9%	16.4%
	Quintile 2	24.3%	25.8%	22.8%	26.6%	25.2%
	Quintile 3	31.7%	31.4%	30.6%	32.1%	30.8%
	Quintile 4	38.6%	38.3%	36.8%	38.4%	39.1%
	Quintile 5	50.1%	47.5%	46.4%	46.5%	47.2%

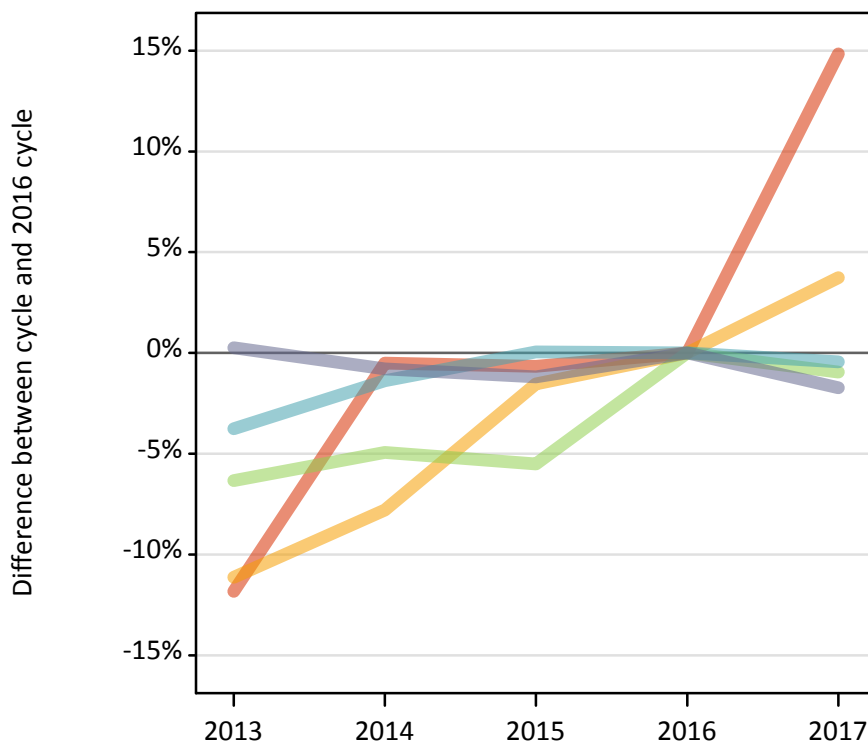
P.12 Placed 18 year old applicants from Northern Ireland by POLAR3 quintile: 14 days after A level results day

Placed 18 year old applicants: entry rate (indexed to 100 = Quintile 1)

Applicant Status	POLAR3	2013	2014	2015	2016	2017
Placed	Quintile 1	100	100	100	100	100
	Quintile 2	160	161	141	167	154
	Quintile 3	209	196	189	202	188
	Quintile 4	255	239	228	242	238
	Quintile 5	331	297	287	292	288

P.13 Placed 18 year old applicants from Scotland by POLAR3 quintile: 14 days after A level results day

Placed 18 year old applicants: change relative to 2016 cycle totals



P.14 Placed 18 year old applicants from Scotland by POLAR3 quintile: 14 days after A level results day

Applicant Status	POLAR3	2013	2014	2015	2016	2017
Placed	Quintile 1	530	600	600	600	690
	Quintile 2	1,330	1,380	1,480	1,500	1,560
	Quintile 3	2,160	2,190	2,180	2,310	2,290
	Quintile 4	3,300	3,380	3,430	3,430	3,410
	Quintile 5	6,800	6,730	6,700	6,780	6,670

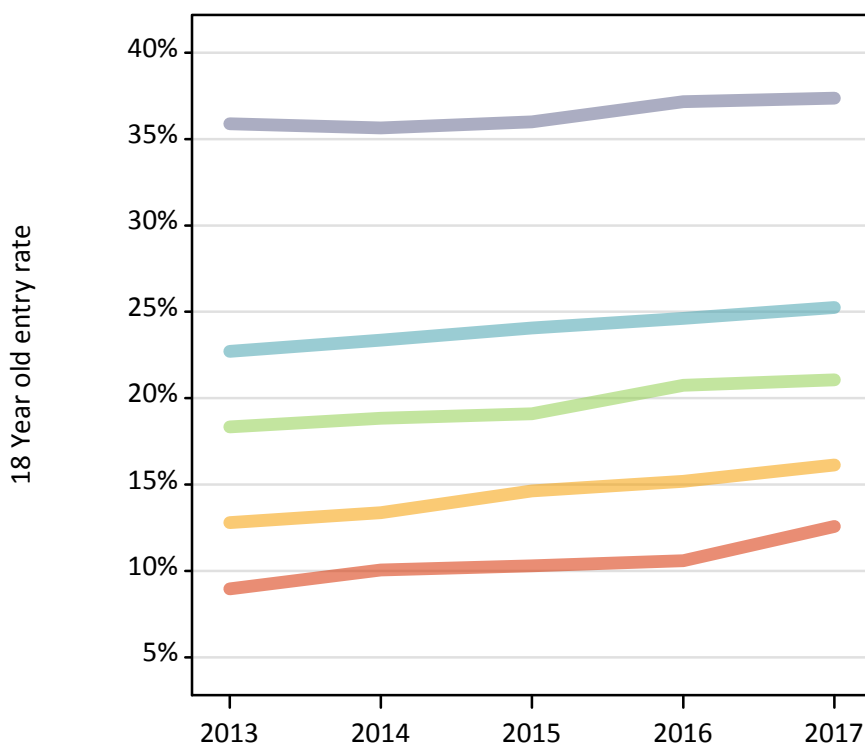
P.15 Placed 18 year old applicants from Scotland by POLAR3 quintile: 14 days after A level results day

Placed 18 year old applicants: change relative to 2016 cycle totals

Applicant Status	POLAR3	2013	2014	2015	2016	2017
Placed	Quintile 1	-12%	-1%	-1%	0%	15%
	Quintile 2	-11%	-8%	-2%	0%	4%
	Quintile 3	-6%	-5%	-6%	0%	-1%
	Quintile 4	-4%	-1%	0%	0%	-0%
	Quintile 5	0%	-1%	-1%	0%	-2%

P.16 Placed 18 year old applicants from Scotland by POLAR3 quintile: 14 days after A level results day

Placed 18 year old applicants: entry rate



P.17 Placed 18 year old applicants from Scotland by POLAR3 quintile: 14 days after A level results day

Placed 18 year old applicants: entry rate

Applicant Status	POLAR3	2013	2014	2015	2016	2017
Placed	Quintile 1	9.0%	10.1%	10.3%	10.6%	12.6%
	Quintile 2	12.8%	13.4%	14.6%	15.2%	16.1%
	Quintile 3	18.3%	18.8%	19.1%	20.7%	21.1%
	Quintile 4	22.7%	23.4%	24.1%	24.6%	25.2%
	Quintile 5	35.9%	35.6%	36.0%	37.2%	37.4%

P.18 Placed 18 year old applicants from Scotland by POLAR3 quintile: 14 days after A level results day

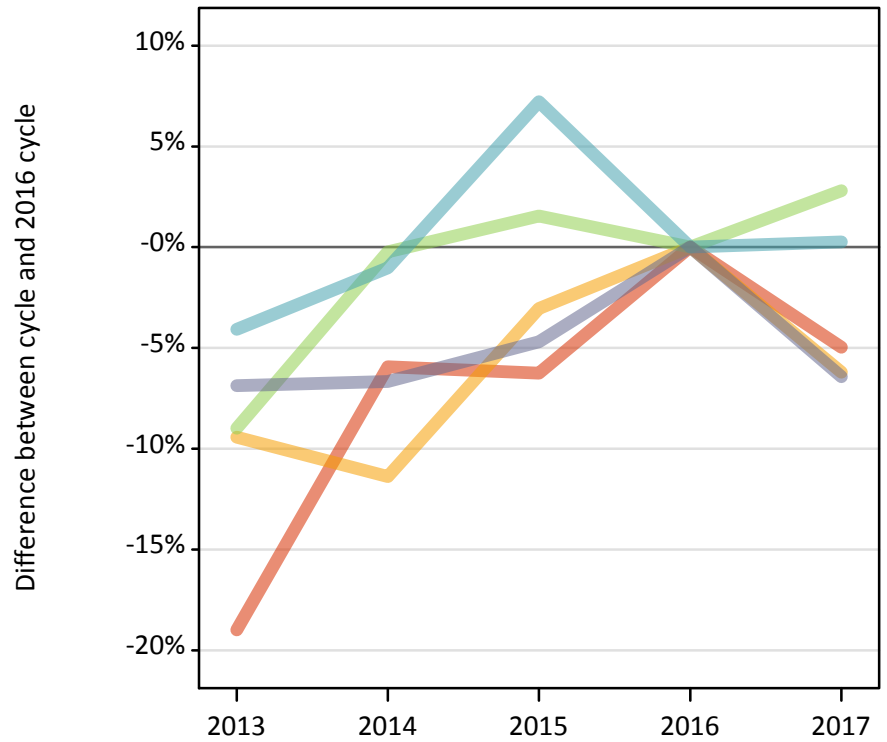
Placed 18 year old applicants: entry rate (indexed to 100 = Quintile 1)

Applicant Status	POLAR3	2013	2014	2015	2016	2017
Placed	Quintile 1	100	100	100	100	100
	Quintile 2	143	133	142	143	128
	Quintile 3	204	187	186	196	168
	Quintile 4	253	232	234	232	201
	Quintile 5	400	354	350	351	297

P.19 Placed 18 year old applicants from Wales by POLAR3 quintile: 14 days after A level results day

Placed 18 year old applicants: change relative to 2016 cycle totals

- Quintile 1
- Quintile 2
- Quintile 3
- Quintile 4
- Quintile 5



P.20 Placed 18 year old applicants from Wales by POLAR3 quintile: 14 days after A level results day

Applicant Status	POLAR3	2013	2014	2015	2016	2017
Placed	Quintile 1	1,270	1,480	1,470	1,570	1,490
	Quintile 2	2,000	1,960	2,140	2,210	2,070
	Quintile 3	1,590	1,740	1,770	1,750	1,800
	Quintile 4	2,140	2,210	2,390	2,230	2,240
	Quintile 5	2,640	2,650	2,700	2,840	2,650

P.21 Placed 18 year old applicants from Wales by POLAR3 quintile: 14 days after A level results day

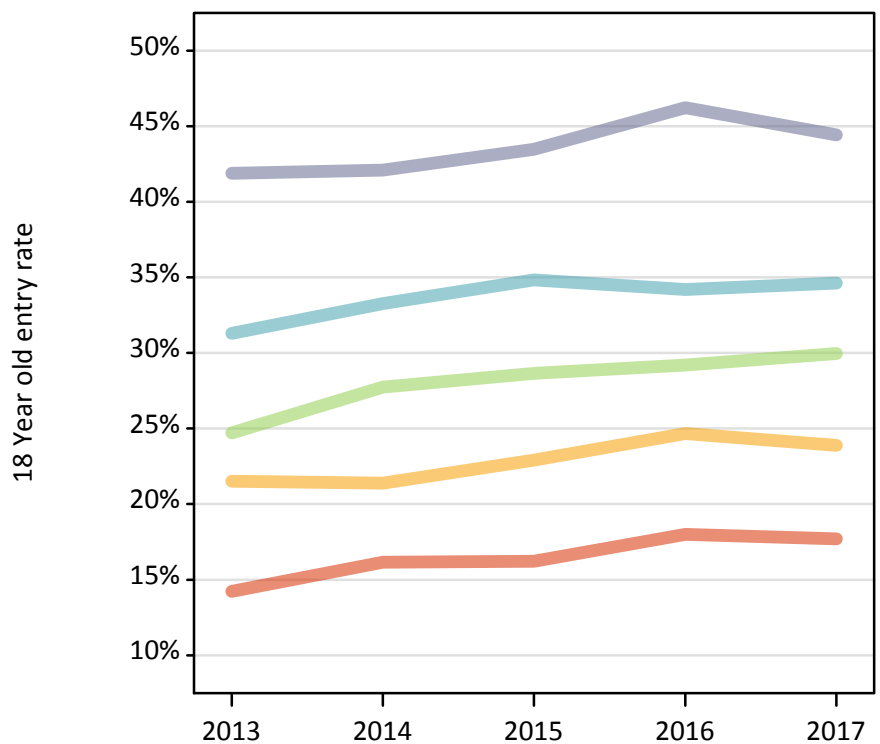
Placed 18 year old applicants: change relative to 2016 cycle totals

Applicant Status	POLAR3	2013	2014	2015	2016	2017
Placed	Quintile 1	-19%	-6%	-6%	0%	-5%
	Quintile 2	-9%	-11%	-3%	0%	-6%
	Quintile 3	-9%	-0%	2%	0%	3%
	Quintile 4	-4%	-1%	7%	0%	0%
	Quintile 5	-7%	-7%	-5%	0%	-6%

P.22 Placed 18 year old applicants from Wales by POLAR3 quintile: 14 days after A level results day

Placed 18 year old applicants: entry rate

- Quintile 1
- Quintile 2
- Quintile 3
- Quintile 4
- Quintile 5



P.23 Placed 18 year old applicants from Wales by POLAR3 quintile: 14 days after A level results day

Placed 18 year old applicants: entry rate

Applicant Status	POLAR3	2013	2014	2015	2016	2017
Placed	Quintile 1	14.2%	16.2%	16.2%	18.0%	17.7%
	Quintile 2	21.5%	21.4%	22.9%	24.7%	23.9%
	Quintile 3	24.7%	27.7%	28.7%	29.2%	30.0%
	Quintile 4	31.3%	33.3%	34.8%	34.2%	34.6%
	Quintile 5	41.9%	42.1%	43.5%	46.2%	44.4%

P.24 Placed 18 year old applicants from Wales by POLAR3 quintile: 14 days after A level results day

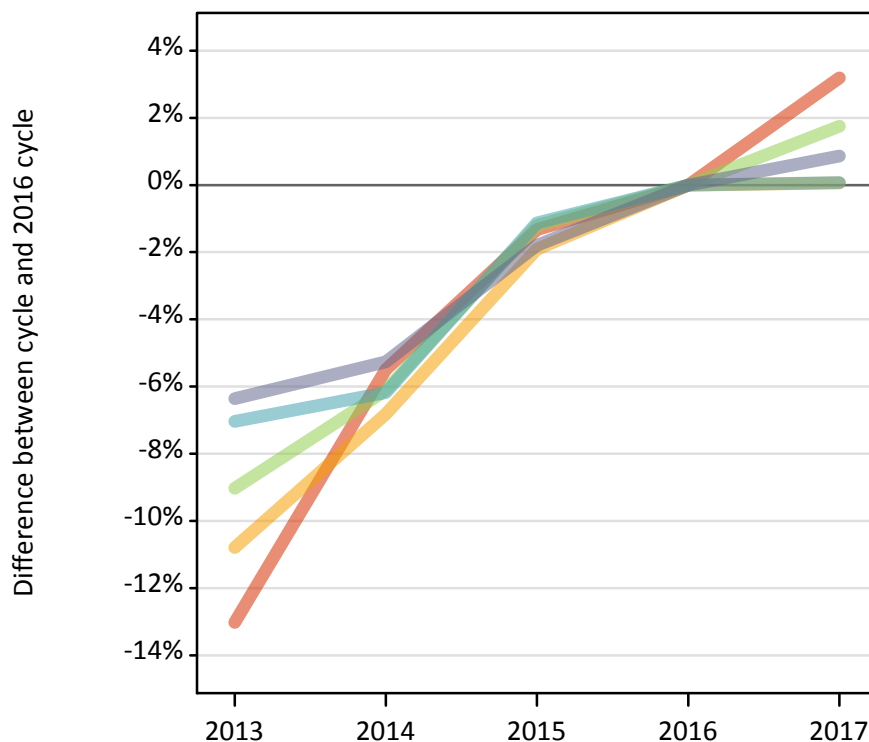
Placed 18 year old applicants: entry rate (indexed to 100 = Quintile 1)

Applicant Status	POLAR3	2013	2014	2015	2016	2017
Placed	Quintile 1	100	100	100	100	100
	Quintile 2	151	132	141	137	135
	Quintile 3	174	172	177	162	169
	Quintile 4	220	206	215	190	196
	Quintile 5	294	261	268	257	251

P.25 Placed 18 year old applicants from the UK by POLAR3 quintile: 14 days after A level results day

Placed 18 year old applicants: change relative to 2016 cycle totals

- Quintile 1
- Quintile 2
- Quintile 3
- Quintile 4
- Quintile 5



P.26 Placed 18 year old applicants from the UK by POLAR3 quintile: 14 days after A level results day

Applicant Status	POLAR3	2013	2014	2015	2016	2017
Placed	Quintile 1	21,740	23,620	24,670	25,000	25,790
	Quintile 2	32,300	33,740	35,520	36,210	36,230
	Quintile 3	41,370	42,700	44,930	45,480	46,280
	Quintile 4	51,370	51,840	54,630	55,260	55,300
	Quintile 5	70,080	70,900	73,490	74,840	75,480

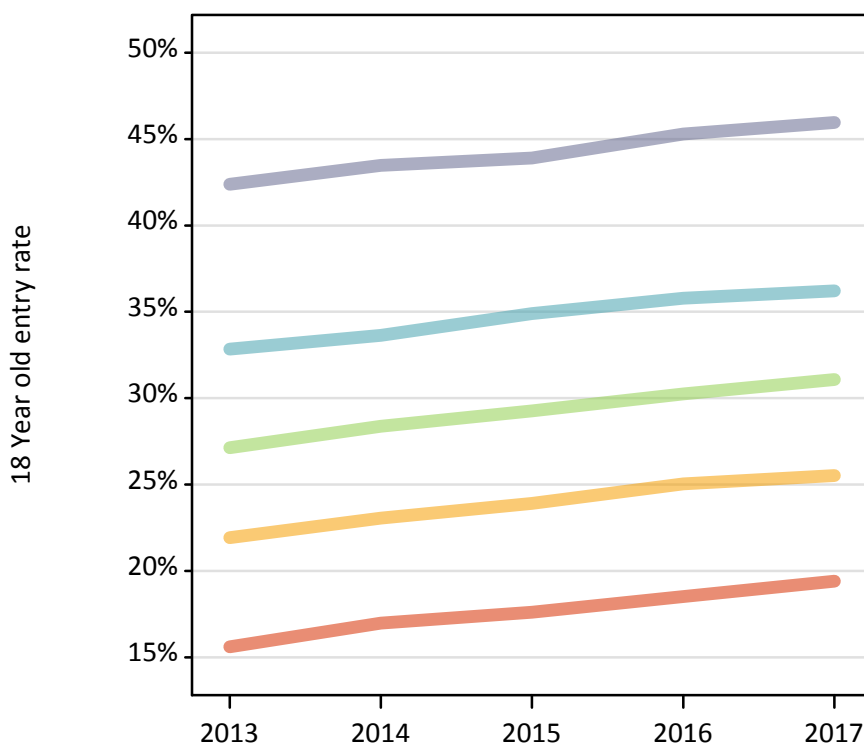
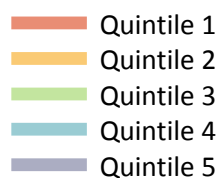
P.27 Placed 18 year old applicants from the UK by POLAR3 quintile: 14 days after A level results day

Placed 18 year old applicants: change relative to 2016 cycle totals

Applicant Status	POLAR3	2013	2014	2015	2016	2017
Placed	Quintile 1	-13%	-5%	-1%	0%	3%
	Quintile 2	-11%	-7%	-2%	0%	0%
	Quintile 3	-9%	-6%	-1%	0%	2%
	Quintile 4	-7%	-6%	-1%	0%	0%
	Quintile 5	-6%	-5%	-2%	0%	1%

P.28 Placed 18 year old applicants from the UK by POLAR3 quintile: 14 days after A level results day

Placed 18 year old applicants: entry rate



P.29 Placed 18 year old applicants from the UK by POLAR3 quintile: 14 days after A level results day

Placed 18 year old applicants: entry rate

Applicant Status	POLAR3	2013	2014	2015	2016	2017
Placed	Quintile 1	15.6%	17.0%	17.6%	18.5%	19.4%
	Quintile 2	21.9%	23.1%	23.9%	25.0%	25.5%
	Quintile 3	27.1%	28.4%	29.3%	30.3%	31.1%
	Quintile 4	32.8%	33.6%	34.9%	35.8%	36.2%
	Quintile 5	42.4%	43.5%	43.9%	45.3%	46.0%

P.30 Placed 18 year old applicants from the UK by POLAR3 quintile: 14 days after A level results day

Placed 18 year old applicants: entry rate (indexed to 100 = Quintile 1)

Applicant Status	POLAR3	2013	2014	2015	2016	2017
Placed	Quintile 1	100	100	100	100	100
	Quintile 2	141	136	136	135	132
	Quintile 3	174	167	166	163	160
	Quintile 4	211	198	198	193	187
	Quintile 5	272	256	249	245	237