

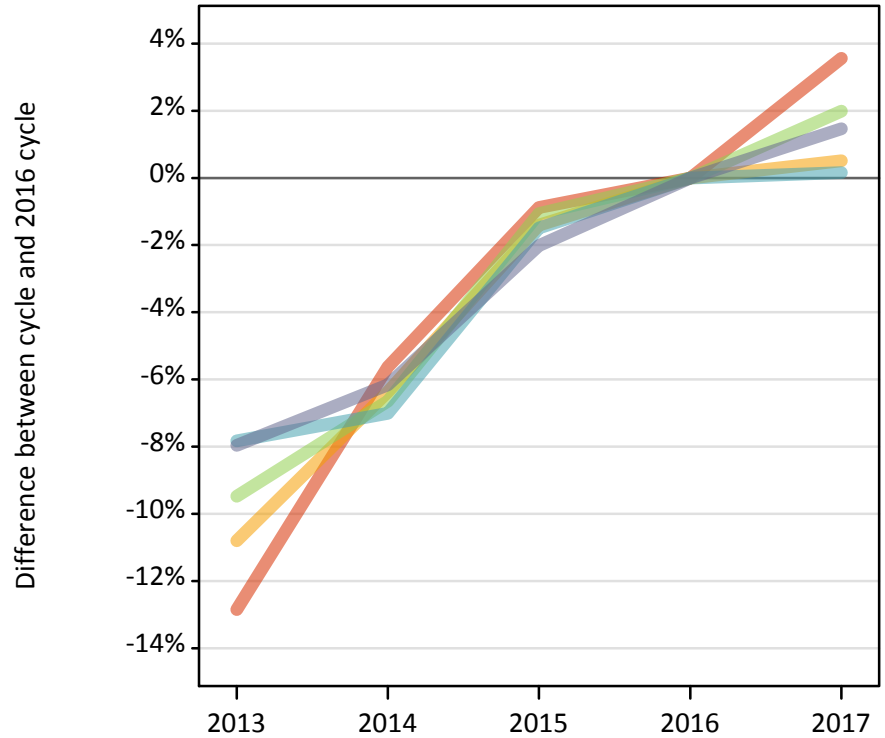
Daily Clearing Analysis: POLAR3

Analysis at 00:05 on Tuesday 29 August 2017 (12 days after A level results day)

P.1 Placed 18 year old applicants from England by POLAR3 quintile: 12 days after A level results day

Placed 18 year old applicants: change relative to 2016 cycle totals

- Quintile 1
- Quintile 2
- Quintile 3
- Quintile 4
- Quintile 5



P.2 Placed 18 year old applicants from England by POLAR3 quintile: 12 days after A level results day

| Applicant Status | POLAR3 | 2013 | 2014 | 2015 | 2016 | 2017 |
|------------------|------------|--------|--------|--------|--------|--------|
| Placed | Quintile 1 | 19,310 | 20,910 | 21,960 | 22,150 | 22,940 |
| | Quintile 2 | 28,030 | 29,420 | 30,980 | 31,420 | 31,580 |
| | Quintile 3 | 36,120 | 37,250 | 39,470 | 39,900 | 40,690 |
| | Quintile 4 | 43,190 | 43,570 | 46,150 | 46,850 | 46,920 |
| | Quintile 5 | 57,030 | 58,150 | 60,720 | 61,960 | 62,870 |

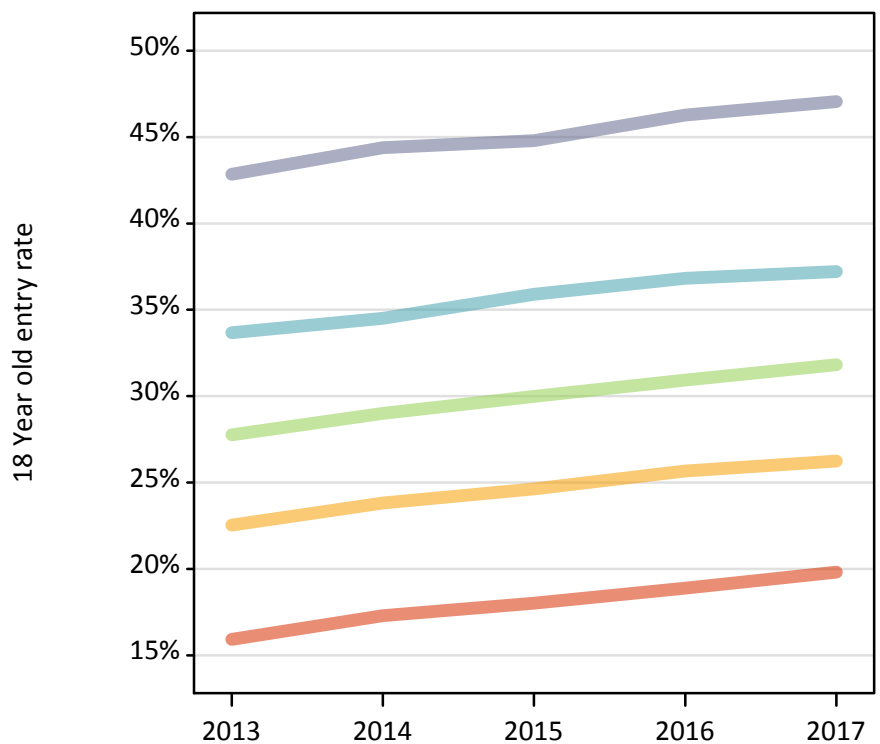
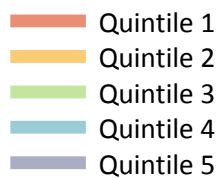
P.3 Placed 18 year old applicants from England by POLAR3 quintile: 12 days after A level results day

Placed 18 year old applicants: change relative to 2016 cycle totals

| Applicant Status | POLAR3 | 2013 | 2014 | 2015 | 2016 | 2017 |
|------------------|------------|------|------|------|------|------|
| Placed | Quintile 1 | -13% | -6% | -1% | 0% | 4% |
| | Quintile 2 | -11% | -6% | -1% | 0% | 1% |
| | Quintile 3 | -9% | -7% | -1% | 0% | 2% |
| | Quintile 4 | -8% | -7% | -1% | 0% | 0% |
| | Quintile 5 | -8% | -6% | -2% | 0% | 1% |

P.4 Placed 18 year old applicants from England by POLAR3 quintile: 12 days after A level results day

Placed 18 year old applicants: entry rate



P.5 Placed 18 year old applicants from England by POLAR3 quintile: 12 days after A level results day

Placed 18 year old applicants: entry rate

| Applicant Status | POLAR3 | 2013 | 2014 | 2015 | 2016 | 2017 |
|------------------|------------|-------|-------|-------|-------|-------|
| Placed | Quintile 1 | 15.9% | 17.3% | 18.0% | 18.9% | 19.8% |
| | Quintile 2 | 22.5% | 23.8% | 24.6% | 25.7% | 26.2% |
| | Quintile 3 | 27.8% | 29.0% | 30.0% | 30.9% | 31.8% |
| | Quintile 4 | 33.7% | 34.5% | 35.9% | 36.8% | 37.2% |
| | Quintile 5 | 42.8% | 44.4% | 44.8% | 46.3% | 47.1% |

P.6 Placed 18 year old applicants from England by POLAR3 quintile: 12 days after A level results day

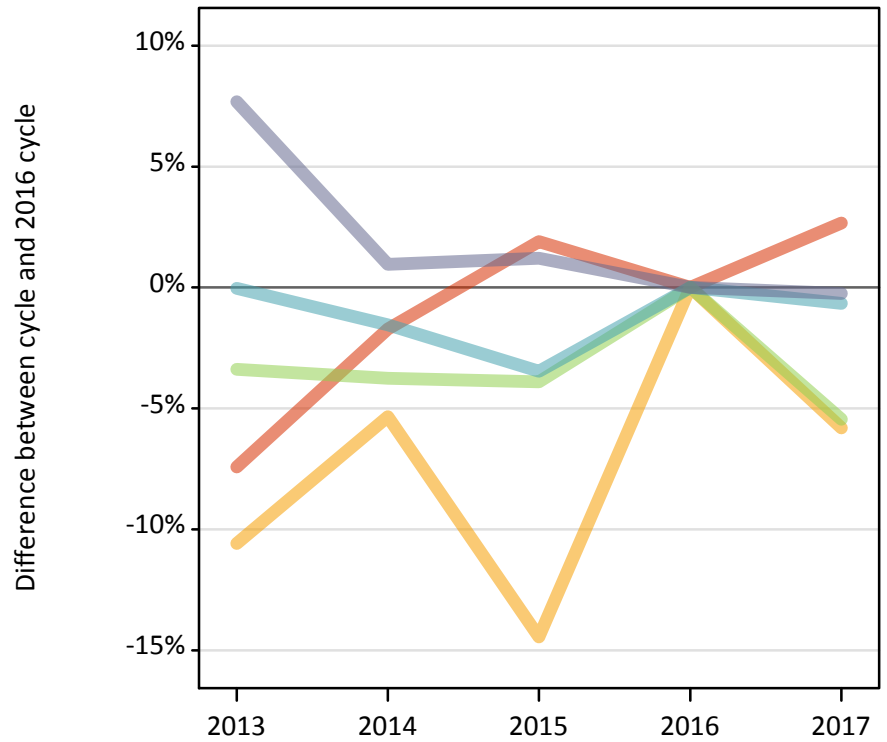
Placed 18 year old applicants: entry rate (indexed to 100 = Quintile 1)

| Applicant Status | POLAR3 | 2013 | 2014 | 2015 | 2016 | 2017 |
|------------------|------------|------|------|------|------|------|
| Placed | Quintile 1 | 100 | 100 | 100 | 100 | 100 |
| | Quintile 2 | 142 | 138 | 137 | 136 | 132 |
| | Quintile 3 | 174 | 168 | 166 | 164 | 161 |
| | Quintile 4 | 212 | 199 | 199 | 195 | 188 |
| | Quintile 5 | 269 | 256 | 249 | 245 | 237 |

P.7 Placed 18 year old applicants from Northern Ireland by POLAR3 quintile: 12 days after A level results day

Placed 18 year old applicants: change relative to 2016 cycle totals

- Quintile 1
- Quintile 2
- Quintile 3
- Quintile 4
- Quintile 5



P.8 Placed 18 year old applicants from Northern Ireland by POLAR3 quintile: 12 days after A level results day

| Applicant Status | POLAR3 | 2013 | 2014 | 2015 | 2016 | 2017 |
|------------------|------------|-------|-------|-------|-------|-------|
| Placed | Quintile 1 | 490 | 520 | 540 | 530 | 540 |
| | Quintile 2 | 790 | 830 | 750 | 880 | 830 |
| | Quintile 3 | 1,310 | 1,310 | 1,310 | 1,360 | 1,280 |
| | Quintile 4 | 2,590 | 2,560 | 2,510 | 2,600 | 2,580 |
| | Quintile 5 | 3,480 | 3,260 | 3,270 | 3,230 | 3,220 |

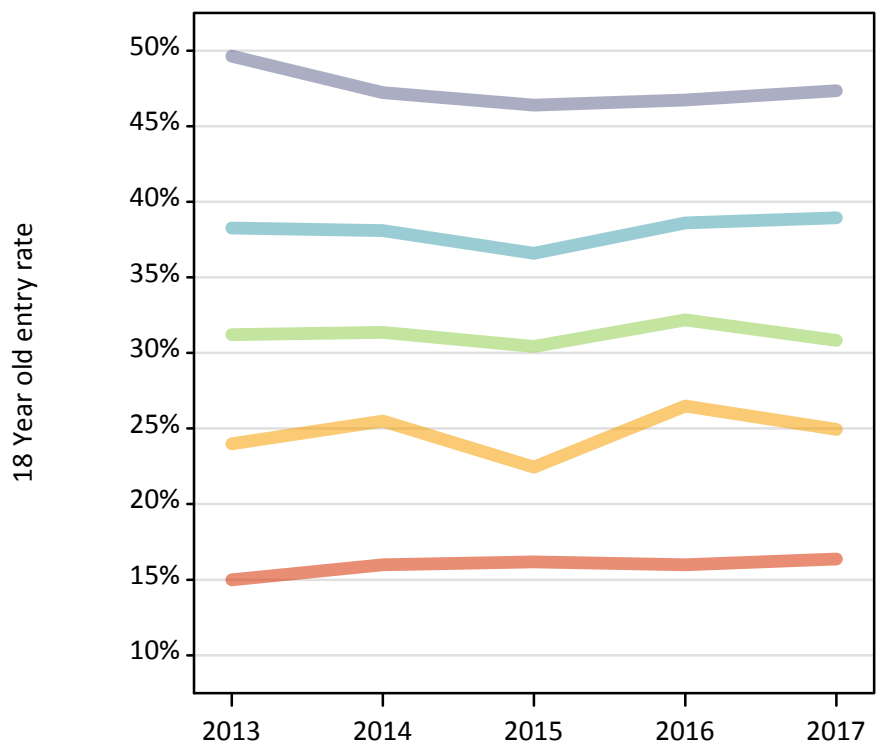
P.9 Placed 18 year old applicants from Northern Ireland by POLAR3 quintile: 12 days after A level results day

Placed 18 year old applicants: change relative to 2016 cycle totals

| Applicant Status | POLAR3 | 2013 | 2014 | 2015 | 2016 | 2017 |
|------------------|------------|------|------|------|------|------|
| Placed | Quintile 1 | -7% | -2% | 2% | 0% | 3% |
| | Quintile 2 | -11% | -5% | -14% | 0% | -6% |
| | Quintile 3 | -3% | -4% | -4% | 0% | -5% |
| | Quintile 4 | -0% | -2% | -3% | 0% | -1% |
| | Quintile 5 | 8% | 1% | 1% | 0% | -0% |

P.10 Placed 18 year old applicants from Northern Ireland by POLAR3 quintile: 12 days after A level results day

Placed 18 year old applicants: entry rate



P.11 Placed 18 year old applicants from Northern Ireland by POLAR3 quintile: 12 days after A level results day

Placed 18 year old applicants: entry rate

| Applicant Status | POLAR3 | 2013 | 2014 | 2015 | 2016 | 2017 |
|------------------|------------|-------|-------|-------|-------|-------|
| Placed | Quintile 1 | 15.0% | 16.0% | 16.2% | 16.0% | 16.4% |
| | Quintile 2 | 24.0% | 25.5% | 22.4% | 26.5% | 24.9% |
| | Quintile 3 | 31.2% | 31.4% | 30.4% | 32.2% | 30.8% |
| | Quintile 4 | 38.3% | 38.1% | 36.6% | 38.6% | 38.9% |
| | Quintile 5 | 49.6% | 47.2% | 46.4% | 46.7% | 47.3% |

P.12 Placed 18 year old applicants from Northern Ireland by POLAR3 quintile: 12 days after A level results day

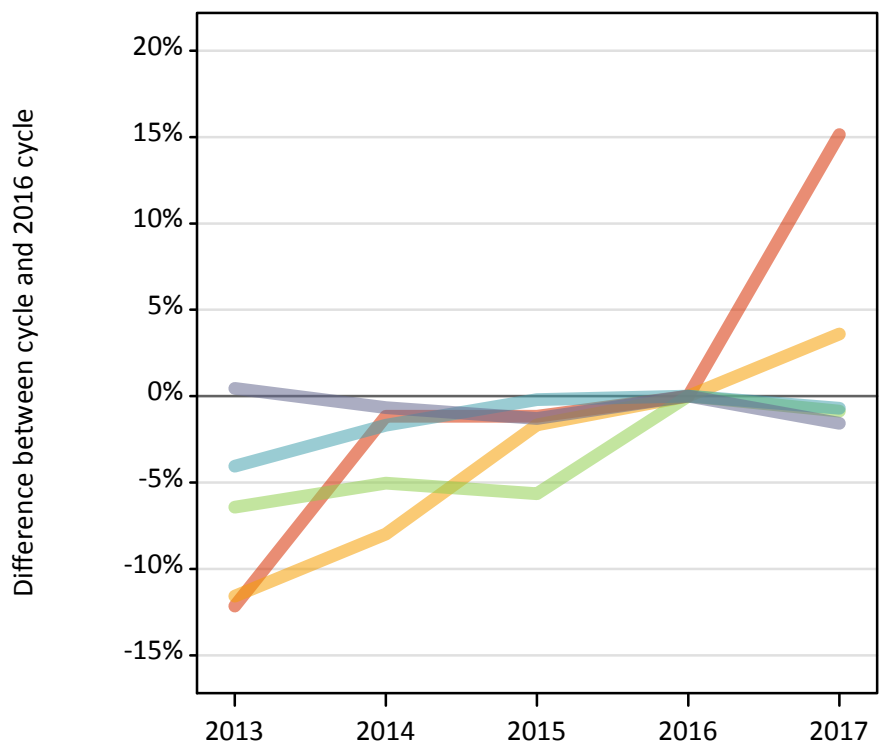
Placed 18 year old applicants: entry rate (indexed to 100 = Quintile 1)

| Applicant Status | POLAR3 | 2013 | 2014 | 2015 | 2016 | 2017 |
|------------------|------------|------|------|------|------|------|
| Placed | Quintile 1 | 100 | 100 | 100 | 100 | 100 |
| | Quintile 2 | 160 | 159 | 139 | 166 | 152 |
| | Quintile 3 | 208 | 196 | 188 | 201 | 188 |
| | Quintile 4 | 255 | 238 | 226 | 241 | 238 |
| | Quintile 5 | 331 | 295 | 287 | 292 | 289 |

P.13 Placed 18 year old applicants from Scotland by POLAR3 quintile: 12 days after A level results day

Placed 18 year old applicants: change relative to 2016 cycle totals

- Quintile 1
- Quintile 2
- Quintile 3
- Quintile 4
- Quintile 5



P.14 Placed 18 year old applicants from Scotland by POLAR3 quintile: 12 days after A level results day

| Applicant Status | POLAR3 | 2013 | 2014 | 2015 | 2016 | 2017 |
|------------------|------------|-------|-------|-------|-------|-------|
| Placed | Quintile 1 | 530 | 590 | 590 | 600 | 690 |
| | Quintile 2 | 1,330 | 1,380 | 1,480 | 1,500 | 1,560 |
| | Quintile 3 | 2,160 | 2,190 | 2,180 | 2,310 | 2,290 |
| | Quintile 4 | 3,290 | 3,380 | 3,430 | 3,430 | 3,410 |
| | Quintile 5 | 6,810 | 6,730 | 6,690 | 6,780 | 6,670 |

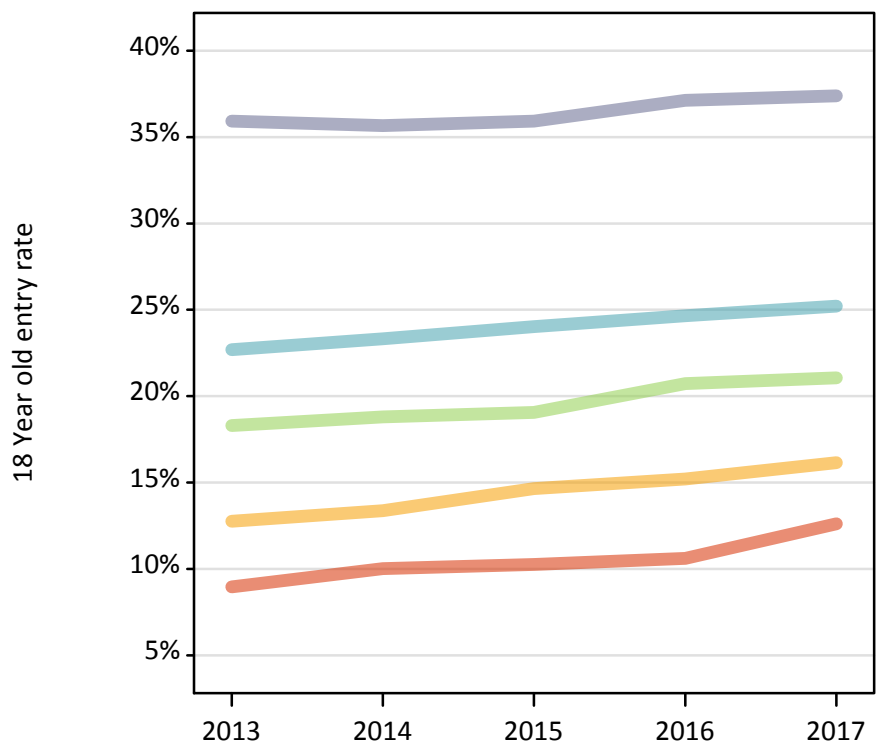
P.15 Placed 18 year old applicants from Scotland by POLAR3 quintile: 12 days after A level results day

Placed 18 year old applicants: change relative to 2016 cycle totals

| Applicant Status | POLAR3 | 2013 | 2014 | 2015 | 2016 | 2017 |
|------------------|------------|------|------|------|------|------|
| Placed | Quintile 1 | -12% | -1% | -1% | 0% | 15% |
| | Quintile 2 | -12% | -8% | -2% | 0% | 4% |
| | Quintile 3 | -6% | -5% | -6% | 0% | -1% |
| | Quintile 4 | -4% | -2% | -0% | 0% | -1% |
| | Quintile 5 | 0% | -1% | -1% | 0% | -2% |

P.16 Placed 18 year old applicants from Scotland by POLAR3 quintile: 12 days after A level results day

Placed 18 year old applicants: entry rate



P.17 Placed 18 year old applicants from Scotland by POLAR3 quintile: 12 days after A level results day

Placed 18 year old applicants: entry rate

| Applicant Status | POLAR3 | 2013 | 2014 | 2015 | 2016 | 2017 |
|------------------|------------|-------|-------|-------|-------|-------|
| Placed | Quintile 1 | 9.0% | 10.0% | 10.3% | 10.6% | 12.6% |
| | Quintile 2 | 12.8% | 13.4% | 14.6% | 15.2% | 16.1% |
| | Quintile 3 | 18.3% | 18.8% | 19.1% | 20.7% | 21.1% |
| | Quintile 4 | 22.7% | 23.3% | 24.0% | 24.7% | 25.2% |
| | Quintile 5 | 35.9% | 35.7% | 35.9% | 37.1% | 37.4% |

P.18 Placed 18 year old applicants from Scotland by POLAR3 quintile: 12 days after A level results day

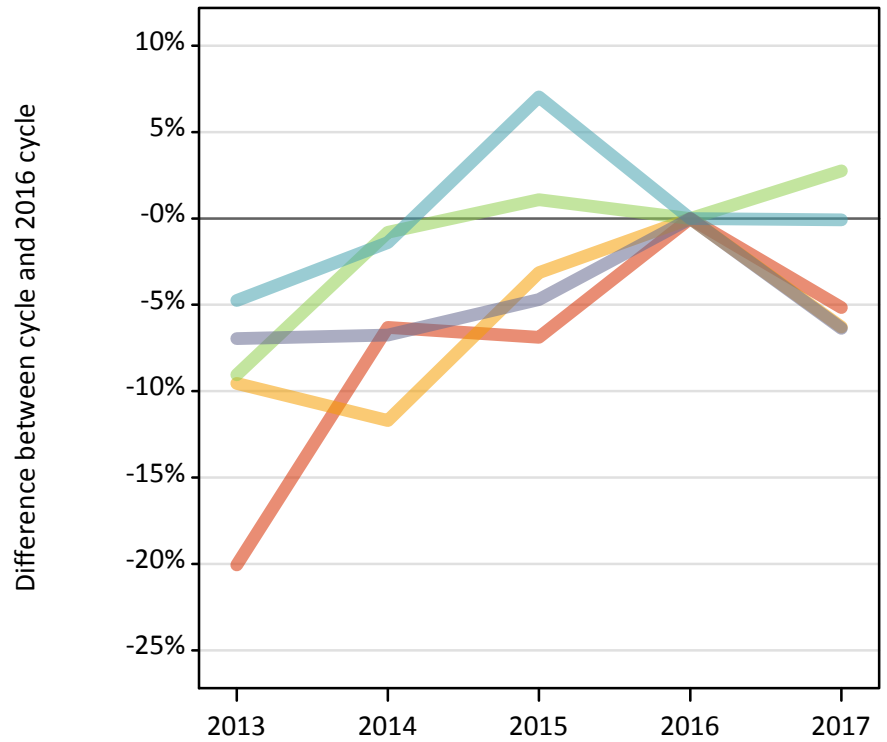
Placed 18 year old applicants: entry rate (indexed to 100 = Quintile 1)

| Applicant Status | POLAR3 | 2013 | 2014 | 2015 | 2016 | 2017 |
|------------------|------------|------|------|------|------|------|
| Placed | Quintile 1 | 100 | 100 | 100 | 100 | 100 |
| | Quintile 2 | 143 | 134 | 143 | 143 | 128 |
| | Quintile 3 | 204 | 188 | 186 | 195 | 167 |
| | Quintile 4 | 253 | 233 | 234 | 232 | 200 |
| | Quintile 5 | 401 | 356 | 350 | 350 | 296 |

P.19 Placed 18 year old applicants from Wales by POLAR3 quintile: 12 days after A level results day

Placed 18 year old applicants: change relative to 2016 cycle totals

- Quintile 1
- Quintile 2
- Quintile 3
- Quintile 4
- Quintile 5



P.20 Placed 18 year old applicants from Wales by POLAR3 quintile: 12 days after A level results day

| Applicant Status | POLAR3 | 2013 | 2014 | 2015 | 2016 | 2017 |
|------------------|------------|-------|-------|-------|-------|-------|
| Placed | Quintile 1 | 1,260 | 1,470 | 1,460 | 1,570 | 1,490 |
| | Quintile 2 | 1,990 | 1,940 | 2,130 | 2,200 | 2,060 |
| | Quintile 3 | 1,590 | 1,730 | 1,760 | 1,750 | 1,790 |
| | Quintile 4 | 2,120 | 2,200 | 2,390 | 2,230 | 2,230 |
| | Quintile 5 | 2,630 | 2,640 | 2,700 | 2,830 | 2,650 |

P.21 Placed 18 year old applicants from Wales by POLAR3 quintile: 12 days after A level results day

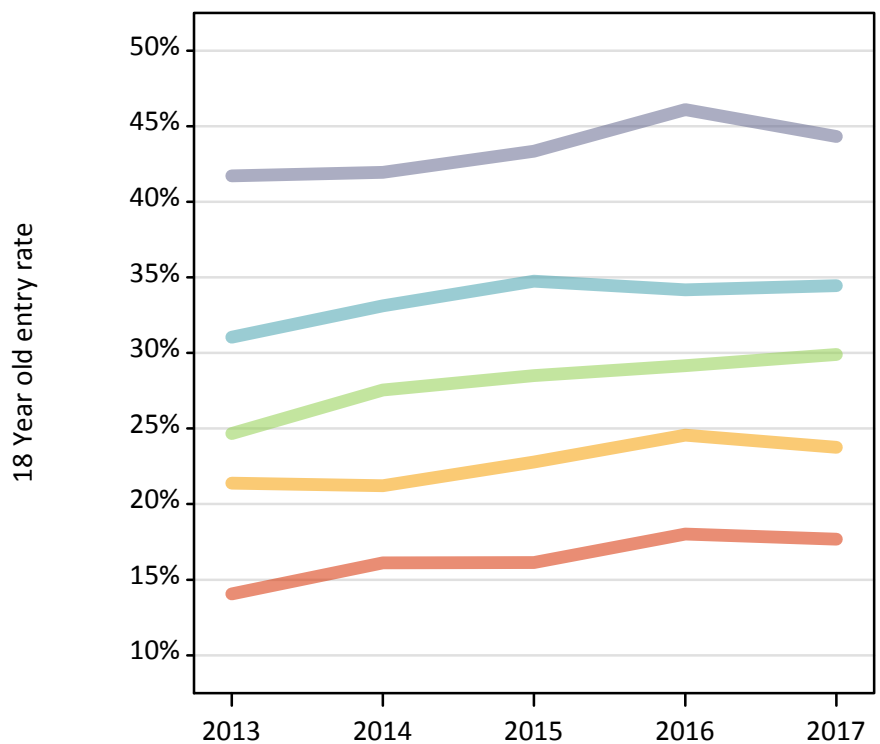
Placed 18 year old applicants: change relative to 2016 cycle totals

| Applicant Status | POLAR3 | 2013 | 2014 | 2015 | 2016 | 2017 |
|------------------|------------|------|------|------|------|------|
| Placed | Quintile 1 | -20% | -6% | -7% | 0% | -5% |
| | Quintile 2 | -10% | -12% | -3% | 0% | -6% |
| | Quintile 3 | -9% | -1% | 1% | 0% | 3% |
| | Quintile 4 | -5% | -1% | 7% | 0% | -0% |
| | Quintile 5 | -7% | -7% | -5% | 0% | -6% |

P.22 Placed 18 year old applicants from Wales by POLAR3 quintile: 12 days after A level results day

Placed 18 year old applicants: entry rate

- Quintile 1
- Quintile 2
- Quintile 3
- Quintile 4
- Quintile 5



P.23 Placed 18 year old applicants from Wales by POLAR3 quintile: 12 days after A level results day

Placed 18 year old applicants: entry rate

| Applicant Status | POLAR3 | 2013 | 2014 | 2015 | 2016 | 2017 |
|------------------|------------|-------|-------|-------|-------|-------|
| Placed | Quintile 1 | 14.1% | 16.1% | 16.1% | 18.0% | 17.7% |
| | Quintile 2 | 21.4% | 21.2% | 22.8% | 24.6% | 23.8% |
| | Quintile 3 | 24.7% | 27.5% | 28.5% | 29.2% | 29.9% |
| | Quintile 4 | 31.0% | 33.1% | 34.7% | 34.2% | 34.5% |
| | Quintile 5 | 41.7% | 41.9% | 43.3% | 46.1% | 44.3% |

P.24 Placed 18 year old applicants from Wales by POLAR3 quintile: 12 days after A level results day

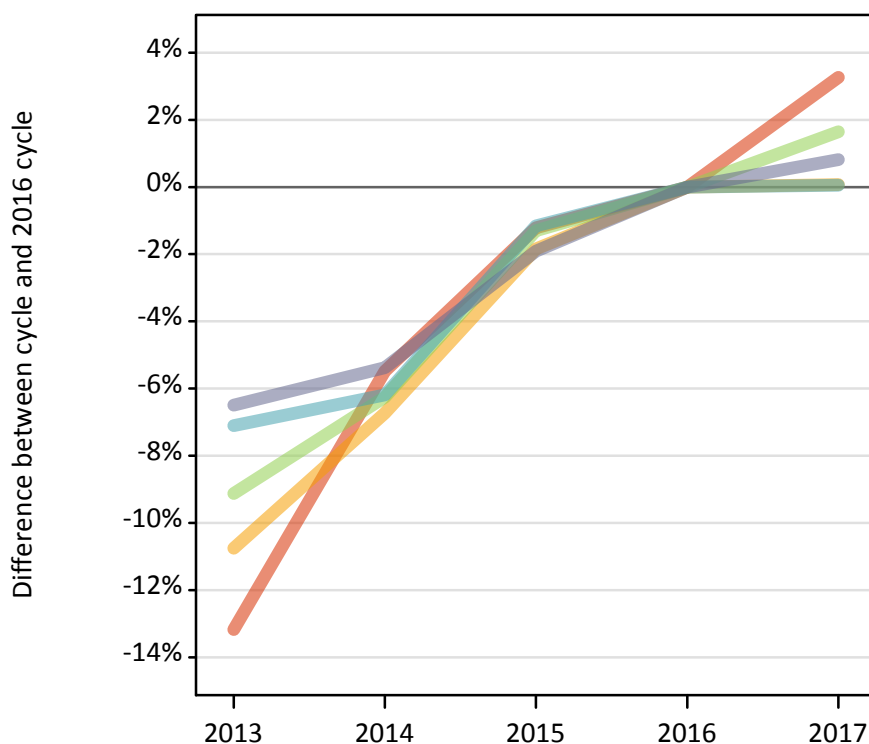
Placed 18 year old applicants: entry rate (indexed to 100 = Quintile 1)

| Applicant Status | POLAR3 | 2013 | 2014 | 2015 | 2016 | 2017 |
|------------------|------------|------|------|------|------|------|
| Placed | Quintile 1 | 100 | 100 | 100 | 100 | 100 |
| | Quintile 2 | 152 | 132 | 141 | 136 | 134 |
| | Quintile 3 | 175 | 171 | 177 | 162 | 169 |
| | Quintile 4 | 221 | 206 | 215 | 190 | 195 |
| | Quintile 5 | 297 | 260 | 269 | 256 | 251 |

P.25 Placed 18 year old applicants from the UK by POLAR3 quintile: 12 days after A level results day

Placed 18 year old applicants: change relative to 2016 cycle totals

- Quintile 1
- Quintile 2
- Quintile 3
- Quintile 4
- Quintile 5



P.26 Placed 18 year old applicants from the UK by POLAR3 quintile: 12 days after A level results day

| Applicant Status | POLAR3 | 2013 | 2014 | 2015 | 2016 | 2017 |
|------------------|------------|--------|--------|--------|--------|--------|
| Placed | Quintile 1 | 21,580 | 23,490 | 24,550 | 24,850 | 25,660 |
| | Quintile 2 | 32,130 | 33,580 | 35,340 | 36,000 | 36,030 |
| | Quintile 3 | 41,170 | 42,470 | 44,720 | 45,310 | 46,050 |
| | Quintile 4 | 51,200 | 51,700 | 54,470 | 55,110 | 55,140 |
| | Quintile 5 | 69,940 | 70,770 | 73,370 | 74,790 | 75,400 |

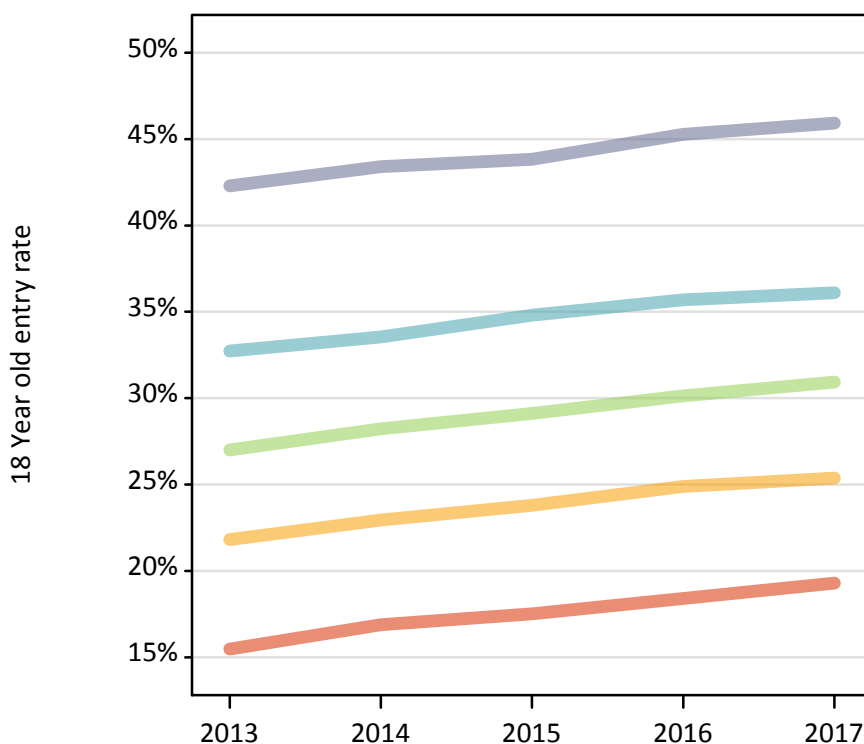
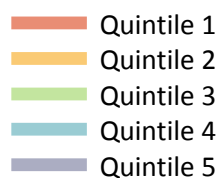
P.27 Placed 18 year old applicants from the UK by POLAR3 quintile: 12 days after A level results day

Placed 18 year old applicants: change relative to 2016 cycle totals

| Applicant Status | POLAR3 | 2013 | 2014 | 2015 | 2016 | 2017 |
|------------------|------------|------|------|------|------|------|
| Placed | Quintile 1 | -13% | -5% | -1% | 0% | 3% |
| | Quintile 2 | -11% | -7% | -2% | 0% | 0% |
| | Quintile 3 | -9% | -6% | -1% | 0% | 2% |
| | Quintile 4 | -7% | -6% | -1% | 0% | 0% |
| | Quintile 5 | -6% | -5% | -2% | 0% | 1% |

P.28 Placed 18 year old applicants from the UK by POLAR3 quintile: 12 days after A level results day

Placed 18 year old applicants: entry rate



P.29 Placed 18 year old applicants from the UK by POLAR3 quintile: 12 days after A level results day

Placed 18 year old applicants: entry rate

| Applicant Status | POLAR3 | 2013 | 2014 | 2015 | 2016 | 2017 |
|------------------|------------|-------|-------|-------|-------|-------|
| Placed | Quintile 1 | 15.5% | 16.9% | 17.5% | 18.4% | 19.3% |
| | Quintile 2 | 21.8% | 22.9% | 23.8% | 24.9% | 25.4% |
| | Quintile 3 | 27.0% | 28.2% | 29.1% | 30.1% | 30.9% |
| | Quintile 4 | 32.7% | 33.5% | 34.8% | 35.7% | 36.1% |
| | Quintile 5 | 42.3% | 43.4% | 43.8% | 45.3% | 45.9% |

P.30 Placed 18 year old applicants from the UK by POLAR3 quintile: 12 days after A level results day

Placed 18 year old applicants: entry rate (indexed to 100 = Quintile 1)

| Applicant Status | POLAR3 | 2013 | 2014 | 2015 | 2016 | 2017 |
|------------------|------------|------|------|------|------|------|
| Placed | Quintile 1 | 100 | 100 | 100 | 100 | 100 |
| | Quintile 2 | 141 | 136 | 136 | 135 | 131 |
| | Quintile 3 | 174 | 167 | 166 | 164 | 160 |
| | Quintile 4 | 211 | 199 | 199 | 194 | 187 |
| | Quintile 5 | 273 | 257 | 250 | 246 | 238 |