

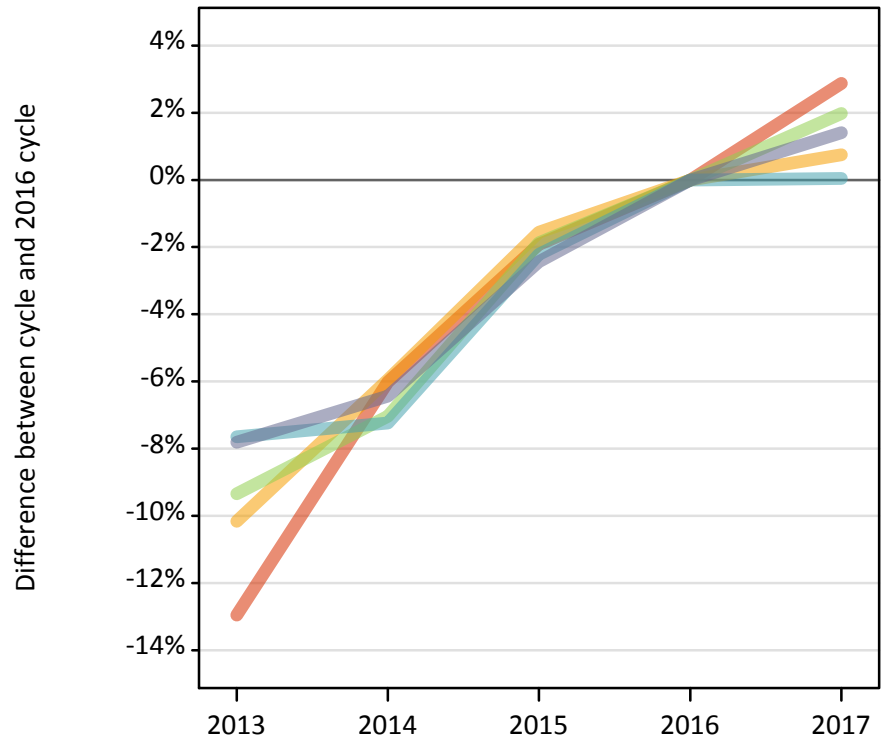
Daily Clearing Analysis: POLAR3

Analysis at 00:05 on Tuesday 22 August 2017 (5 days after A level results day)

P.1 Placed 18 year old applicants from England by POLAR3 quintile: 5 days after A level results day

Placed 18 year old applicants: change relative to 2016 cycle totals

- Quintile 1
- Quintile 2
- Quintile 3
- Quintile 4
- Quintile 5



P.2 Placed 18 year old applicants from England by POLAR3 quintile: 5 days after A level results day

Applicant Status	POLAR3	2013	2014	2015	2016	2017
Placed	Quintile 1	18,740	20,240	21,120	21,530	22,150
	Quintile 2	27,330	28,610	29,940	30,420	30,650
	Quintile 3	35,160	36,050	38,050	38,780	39,540
	Quintile 4	42,220	42,410	44,700	45,710	45,740
	Quintile 5	56,000	56,840	59,270	60,750	61,600

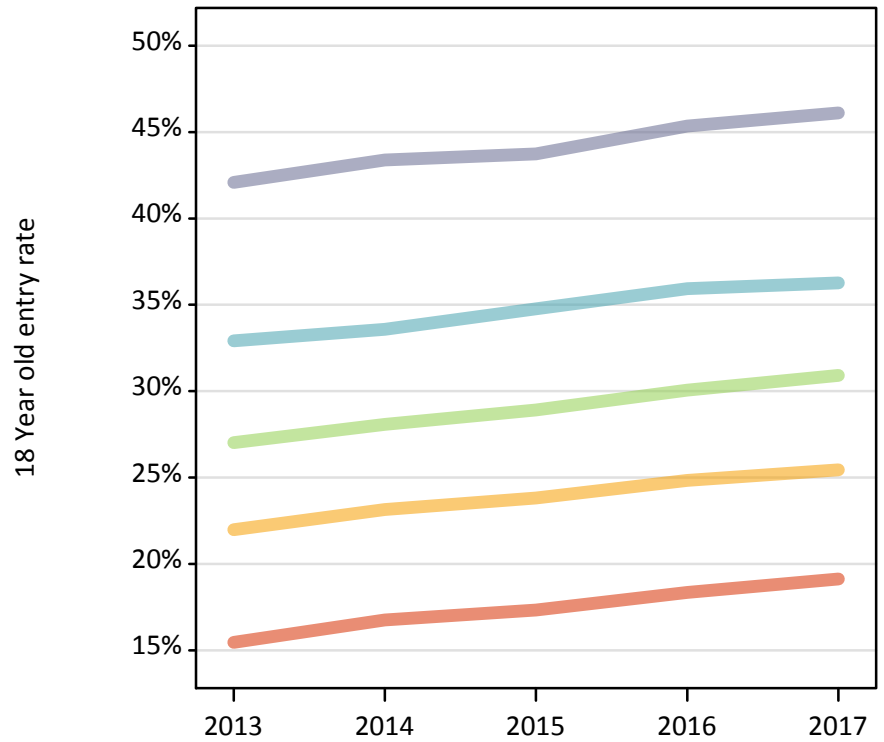
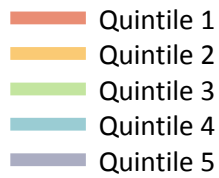
P.3 Placed 18 year old applicants from England by POLAR3 quintile: 5 days after A level results day

Placed 18 year old applicants: change relative to 2016 cycle totals

Applicant Status	POLAR3	2013	2014	2015	2016	2017
Placed	Quintile 1	-13%	-6%	-2%	0%	3%
	Quintile 2	-10%	-6%	-2%	0%	1%
	Quintile 3	-9%	-7%	-2%	0%	2%
	Quintile 4	-8%	-7%	-2%	0%	0%
	Quintile 5	-8%	-6%	-2%	0%	1%

P.4 Placed 18 year old applicants from England by POLAR3 quintile: 5 days after A level results day

Placed 18 year old applicants: entry rate



P.5 Placed 18 year old applicants from England by POLAR3 quintile: 5 days after A level results day

Placed 18 year old applicants: entry rate

Applicant Status	POLAR3	2013	2014	2015	2016	2017
Placed	Quintile 1	15.5%	16.7%	17.3%	18.4%	19.1%
	Quintile 2	22.0%	23.2%	23.8%	24.8%	25.5%
	Quintile 3	27.0%	28.1%	28.9%	30.1%	30.9%
	Quintile 4	32.9%	33.6%	34.8%	35.9%	36.3%
	Quintile 5	42.1%	43.4%	43.7%	45.4%	46.1%

P.6 Placed 18 year old applicants from England by POLAR3 quintile: 5 days after A level results day

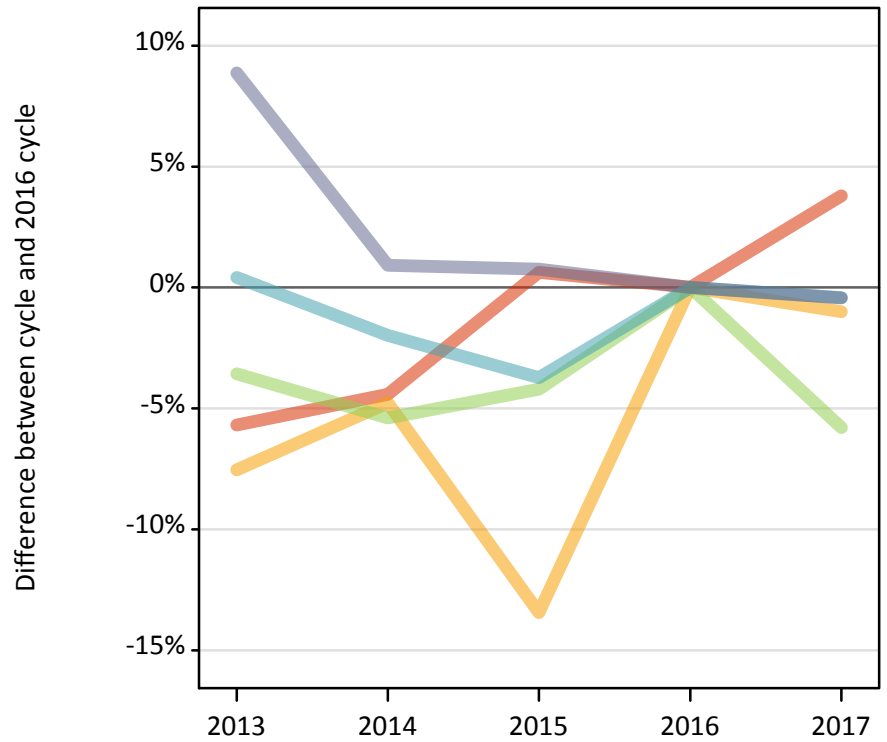
Placed 18 year old applicants: entry rate (indexed to 100 = Quintile 1)

Applicant Status	POLAR3	2013	2014	2015	2016	2017
Placed	Quintile 1	100	100	100	100	100
	Quintile 2	142	138	137	135	133
	Quintile 3	175	168	167	164	162
	Quintile 4	213	201	201	196	190
	Quintile 5	272	259	252	247	241

P.7 Placed 18 year old applicants from Northern Ireland by POLAR3 quintile: 5 days after A level results day

Placed 18 year old applicants: change relative to 2016 cycle totals

- Quintile 1
- Quintile 2
- Quintile 3
- Quintile 4
- Quintile 5



P.8 Placed 18 year old applicants from Northern Ireland by POLAR3 quintile: 5 days after A level results day

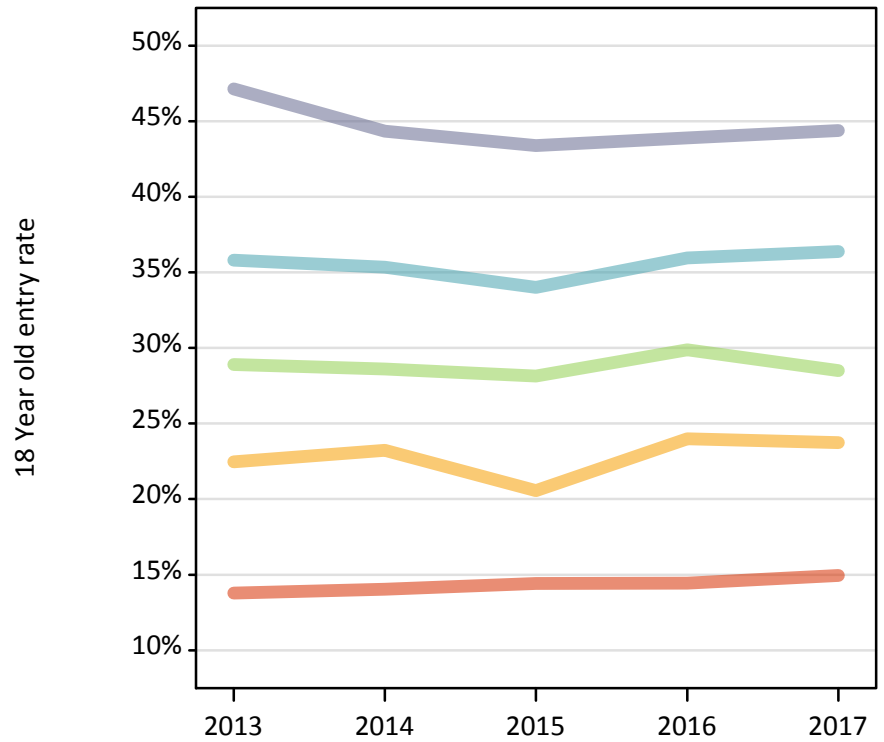
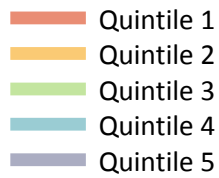
Applicant Status	POLAR3	2013	2014	2015	2016	2017
Placed	Quintile 1	450	450	480	480	490
	Quintile 2	740	760	690	800	790
	Quintile 3	1,220	1,190	1,210	1,260	1,190
	Quintile 4	2,430	2,370	2,330	2,420	2,410
	Quintile 5	3,300	3,060	3,050	3,030	3,020

P.9 Placed 18 year old applicants from Northern Ireland by POLAR3 quintile: 5 days after A level results day

Placed 18 year old applicants: change relative to 2016 cycle totals

Applicant Status	POLAR3	2013	2014	2015	2016	2017
Placed	Quintile 1	-6%	-4%	1%	0%	4%
	Quintile 2	-8%	-5%	-13%	0%	-1%
	Quintile 3	-4%	-5%	-4%	0%	-6%
	Quintile 4	0%	-2%	-4%	0%	-0%
	Quintile 5	9%	1%	1%	0%	-0%

P.10 Placed 18 year old applicants from Northern Ireland by POLAR3 quintile: 5 days after A level results day
Placed 18 year old applicants: entry rate



P.11 Placed 18 year old applicants from Northern Ireland by POLAR3 quintile: 5 days after A level results day
Placed 18 year old applicants: entry rate

Applicant Status	POLAR3	2013	2014	2015	2016	2017
Placed	Quintile 1	13.8%	14.0%	14.4%	14.4%	15.0%
	Quintile 2	22.5%	23.2%	20.6%	24.0%	23.7%
	Quintile 3	28.9%	28.6%	28.1%	29.9%	28.5%
	Quintile 4	35.8%	35.3%	34.0%	36.0%	36.4%
	Quintile 5	47.1%	44.3%	43.4%	43.9%	44.4%

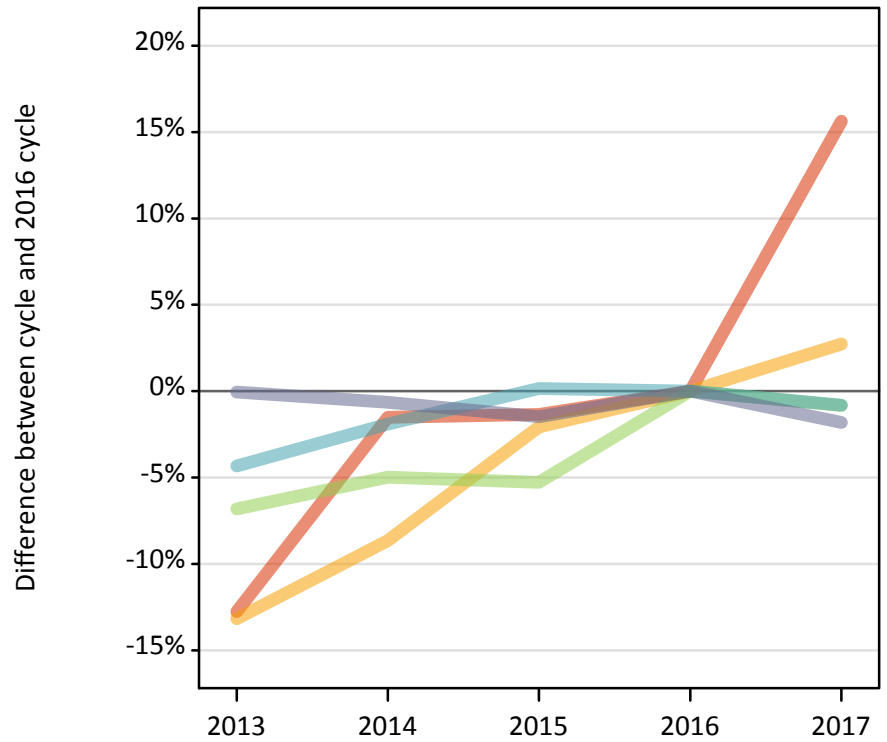
P.12 Placed 18 year old applicants from Northern Ireland by POLAR3 quintile: 5 days after A level results day
Placed 18 year old applicants: entry rate (indexed to 100 = Quintile 1)

Applicant Status	POLAR3	2013	2014	2015	2016	2017
Placed	Quintile 1	100	100	100	100	100
	Quintile 2	163	165	143	166	159
	Quintile 3	210	204	195	207	191
	Quintile 4	260	252	236	249	243
	Quintile 5	342	316	301	304	297

P.13 Placed 18 year old applicants from Scotland by POLAR3 quintile: 5 days after A level results day

Placed 18 year old applicants: change relative to 2016 cycle totals

- Quintile 1
- Quintile 2
- Quintile 3
- Quintile 4
- Quintile 5



P.14 Placed 18 year old applicants from Scotland by POLAR3 quintile: 5 days after A level results day

Applicant Status	POLAR3	2013	2014	2015	2016	2017
Placed	Quintile 1	520	590	590	600	690
	Quintile 2	1,310	1,370	1,470	1,500	1,540
	Quintile 3	2,140	2,180	2,170	2,290	2,270
	Quintile 4	3,270	3,350	3,420	3,420	3,390
	Quintile 5	6,750	6,710	6,660	6,760	6,640

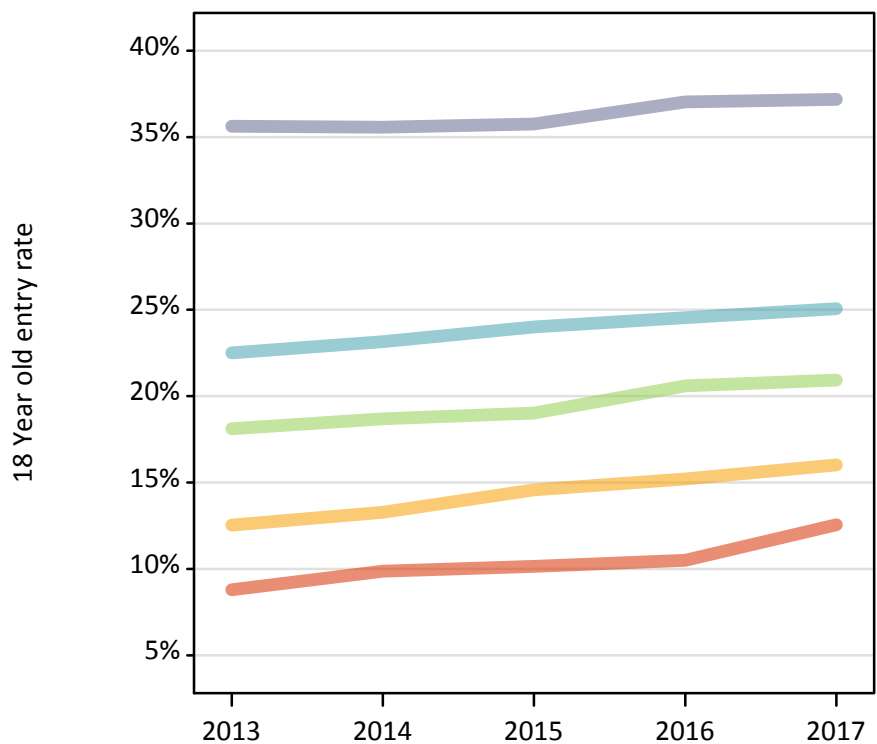
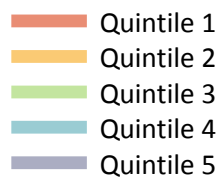
P.15 Placed 18 year old applicants from Scotland by POLAR3 quintile: 5 days after A level results day

Placed 18 year old applicants: change relative to 2016 cycle totals

Applicant Status	POLAR3	2013	2014	2015	2016	2017
Placed	Quintile 1	-13%	-2%	-1%	0%	16%
	Quintile 2	-13%	-9%	-2%	0%	3%
	Quintile 3	-7%	-5%	-5%	0%	-1%
	Quintile 4	-4%	-2%	0%	0%	-1%
	Quintile 5	-0%	-1%	-1%	0%	-2%

P.16 Placed 18 year old applicants from Scotland by POLAR3 quintile: 5 days after A level results day

Placed 18 year old applicants: entry rate



P.17 Placed 18 year old applicants from Scotland by POLAR3 quintile: 5 days after A level results day

Placed 18 year old applicants: entry rate

Applicant Status	POLAR3	2013	2014	2015	2016	2017
Placed	Quintile 1	8.8%	9.9%	10.1%	10.5%	12.5%
	Quintile 2	12.5%	13.3%	14.6%	15.2%	16.0%
	Quintile 3	18.1%	18.7%	19.0%	20.6%	20.9%
	Quintile 4	22.5%	23.2%	24.0%	24.5%	25.1%
	Quintile 5	35.6%	35.6%	35.8%	37.0%	37.2%

P.18 Placed 18 year old applicants from Scotland by POLAR3 quintile: 5 days after A level results day

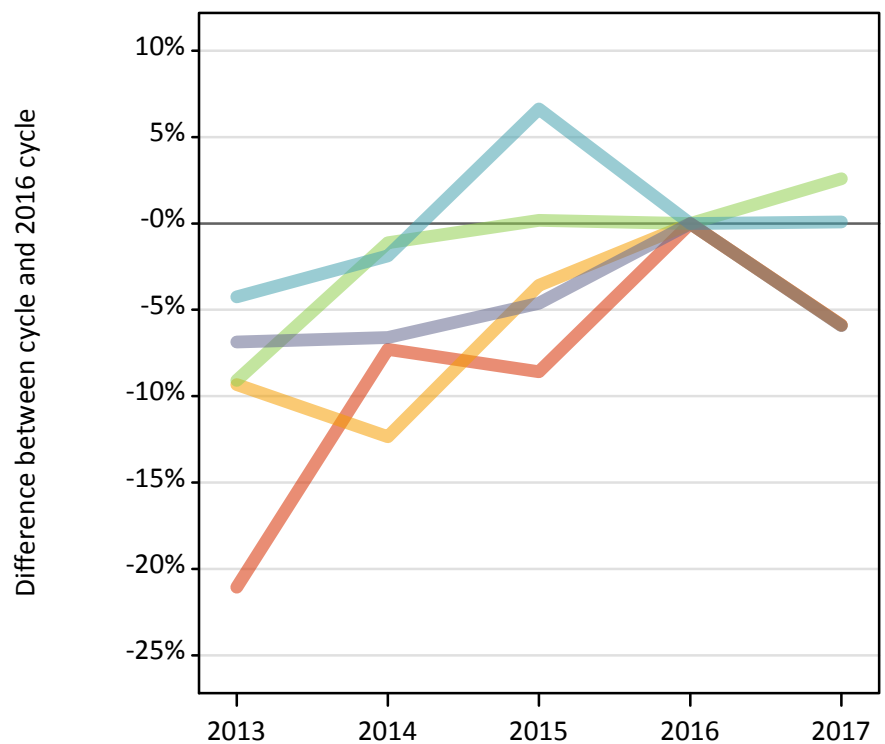
Placed 18 year old applicants: entry rate (indexed to 100 = Quintile 1)

Applicant Status	POLAR3	2013	2014	2015	2016	2017
Placed	Quintile 1	100	100	100	100	100
	Quintile 2	142	134	144	145	128
	Quintile 3	206	189	187	196	167
	Quintile 4	256	234	237	234	200
	Quintile 5	405	360	353	352	296

P.19 Placed 18 year old applicants from Wales by POLAR3 quintile: 5 days after A level results day

Placed 18 year old applicants: change relative to 2016 cycle totals

- Quintile 1
- Quintile 2
- Quintile 3
- Quintile 4
- Quintile 5



P.20 Placed 18 year old applicants from Wales by POLAR3 quintile: 5 days after A level results day

Applicant Status	POLAR3	2013	2014	2015	2016	2017
Placed	Quintile 1	1,220	1,440	1,420	1,550	1,460
	Quintile 2	1,950	1,890	2,080	2,150	2,030
	Quintile 3	1,550	1,690	1,710	1,710	1,750
	Quintile 4	2,100	2,150	2,330	2,190	2,190
	Quintile 5	2,580	2,590	2,640	2,770	2,610

P.21 Placed 18 year old applicants from Wales by POLAR3 quintile: 5 days after A level results day

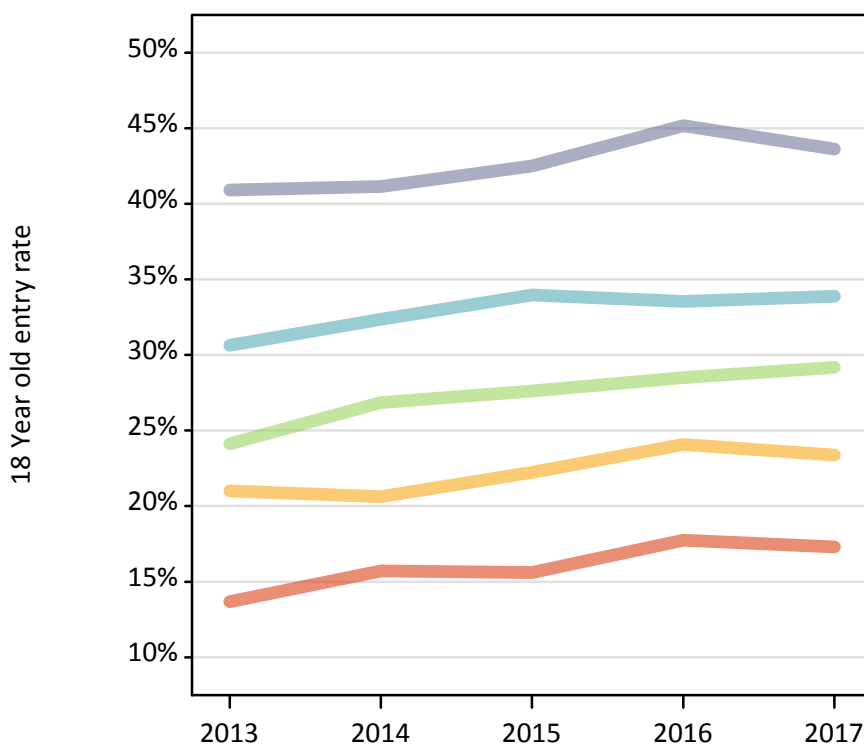
Placed 18 year old applicants: change relative to 2016 cycle totals

Applicant Status	POLAR3	2013	2014	2015	2016	2017
Placed	Quintile 1	-21%	-7%	-9%	0%	-6%
	Quintile 2	-9%	-12%	-4%	0%	-6%
	Quintile 3	-9%	-1%	0%	0%	3%
	Quintile 4	-4%	-2%	7%	0%	0%
	Quintile 5	-7%	-7%	-5%	0%	-6%

P.22 Placed 18 year old applicants from Wales by POLAR3 quintile: 5 days after A level results day

Placed 18 year old applicants: entry rate

- Quintile 1
- Quintile 2
- Quintile 3
- Quintile 4
- Quintile 5



P.23 Placed 18 year old applicants from Wales by POLAR3 quintile: 5 days after A level results day

Placed 18 year old applicants: entry rate

Applicant Status	POLAR3	2013	2014	2015	2016	2017
Placed	Quintile 1	13.7%	15.7%	15.6%	17.8%	17.3%
	Quintile 2	21.0%	20.6%	22.2%	24.1%	23.4%
	Quintile 3	24.1%	26.8%	27.6%	28.5%	29.2%
	Quintile 4	30.6%	32.3%	34.0%	33.5%	33.9%
	Quintile 5	40.9%	41.1%	42.5%	45.2%	43.6%

P.24 Placed 18 year old applicants from Wales by POLAR3 quintile: 5 days after A level results day

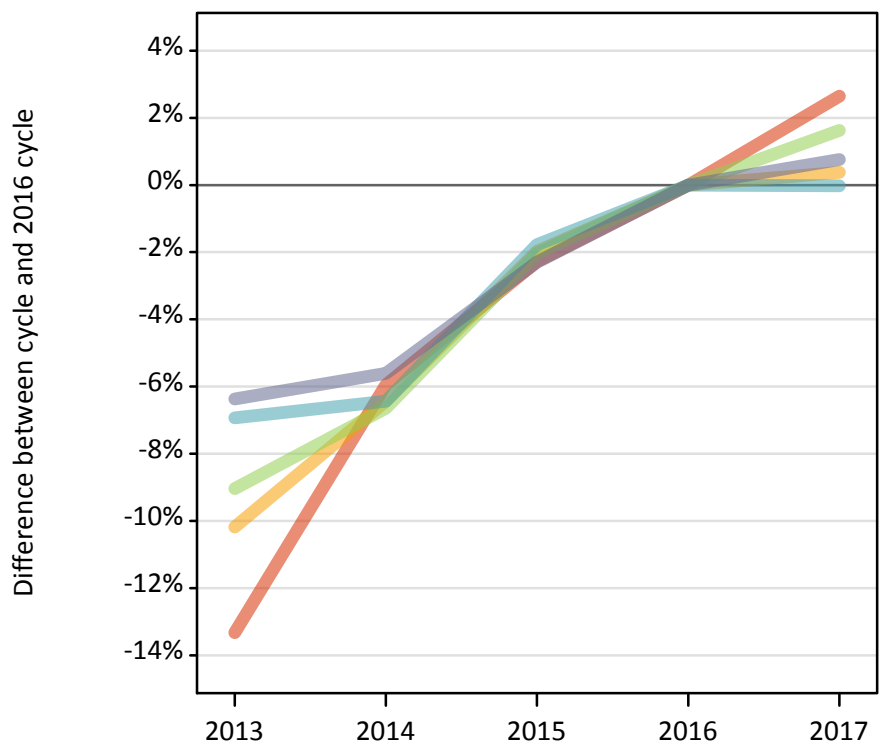
Placed 18 year old applicants: entry rate (indexed to 100 = Quintile 1)

Applicant Status	POLAR3	2013	2014	2015	2016	2017
Placed	Quintile 1	100	100	100	100	100
	Quintile 2	153	131	142	136	135
	Quintile 3	176	171	177	161	169
	Quintile 4	224	206	218	189	196
	Quintile 5	299	262	272	254	252

P.25 Placed 18 year old applicants from the UK by POLAR3 quintile: 5 days after A level results day

Placed 18 year old applicants: change relative to 2016 cycle totals

- Quintile 1
- Quintile 2
- Quintile 3
- Quintile 4
- Quintile 5



P.26 Placed 18 year old applicants from the UK by POLAR3 quintile: 5 days after A level results day

Applicant Status	POLAR3	2013	2014	2015	2016	2017
Placed	Quintile 1	20,930	22,710	23,600	24,150	24,790
	Quintile 2	31,320	32,630	34,180	34,870	35,000
	Quintile 3	40,060	41,110	43,140	44,030	44,750
	Quintile 4	50,010	50,280	52,780	53,740	53,720
	Quintile 5	68,640	69,200	71,620	73,300	73,860

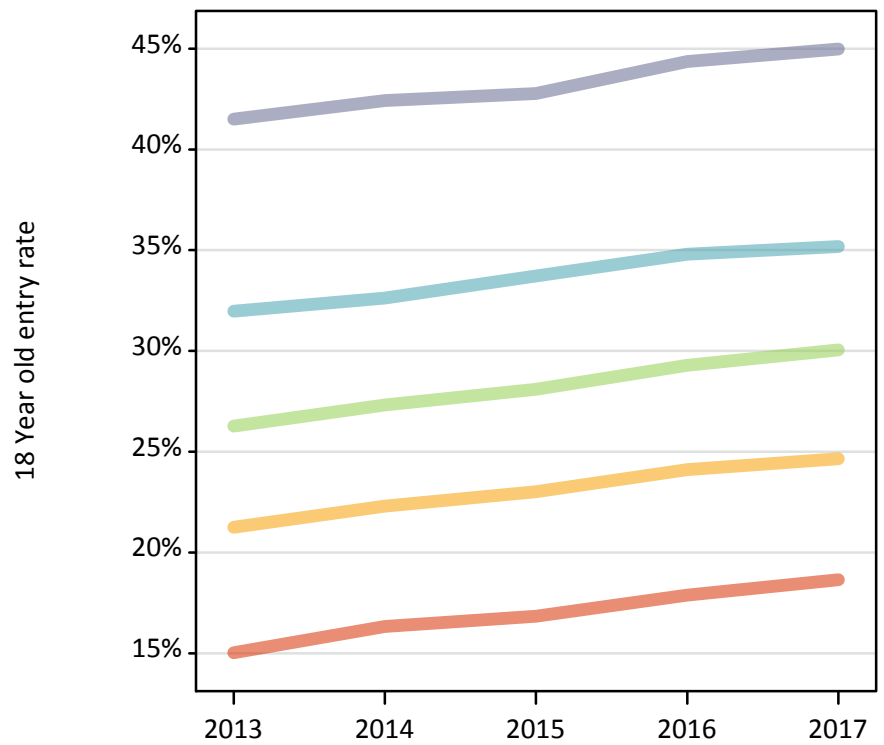
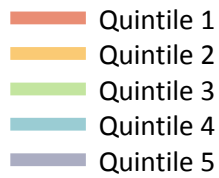
P.27 Placed 18 year old applicants from the UK by POLAR3 quintile: 5 days after A level results day

Placed 18 year old applicants: change relative to 2016 cycle totals

Applicant Status	POLAR3	2013	2014	2015	2016	2017
Placed	Quintile 1	-13%	-6%	-2%	0%	3%
	Quintile 2	-10%	-6%	-2%	0%	0%
	Quintile 3	-9%	-7%	-2%	0%	2%
	Quintile 4	-7%	-6%	-2%	0%	-0%
	Quintile 5	-6%	-6%	-2%	0%	1%

P.28 Placed 18 year old applicants from the UK by POLAR3 quintile: 5 days after A level results day

Placed 18 year old applicants: entry rate



P.29 Placed 18 year old applicants from the UK by POLAR3 quintile: 5 days after A level results day

Placed 18 year old applicants: entry rate

Applicant Status	POLAR3	2013	2014	2015	2016	2017
Placed	Quintile 1	15.0%	16.3%	16.8%	17.9%	18.6%
	Quintile 2	21.3%	22.3%	23.0%	24.1%	24.6%
	Quintile 3	26.3%	27.3%	28.1%	29.3%	30.0%
	Quintile 4	32.0%	32.6%	33.7%	34.8%	35.2%
	Quintile 5	41.5%	42.4%	42.8%	44.4%	45.0%

P.30 Placed 18 year old applicants from the UK by POLAR3 quintile: 5 days after A level results day

Placed 18 year old applicants: entry rate (indexed to 100 = Quintile 1)

Applicant Status	POLAR3	2013	2014	2015	2016	2017
Placed	Quintile 1	100	100	100	100	100
	Quintile 2	142	137	137	135	132
	Quintile 3	175	167	167	164	161
	Quintile 4	213	200	200	195	189
	Quintile 5	276	260	254	248	241