

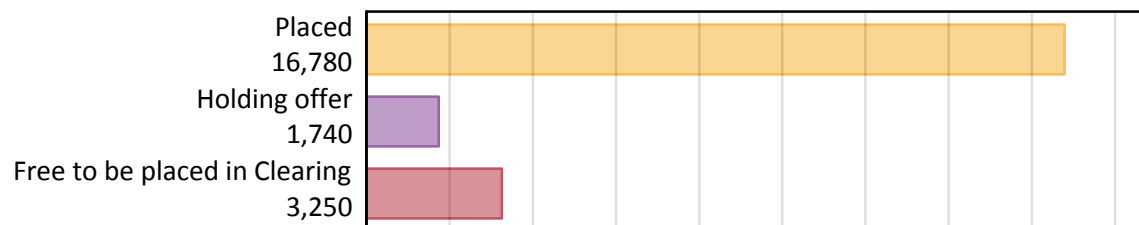
# Daily Clearing Analysis: Overview

Analysis at 00:05 on Friday 17 August 2018 (1 day after A level results day)

## A.1 Applicants by type and status from Wales, 2018 cycle

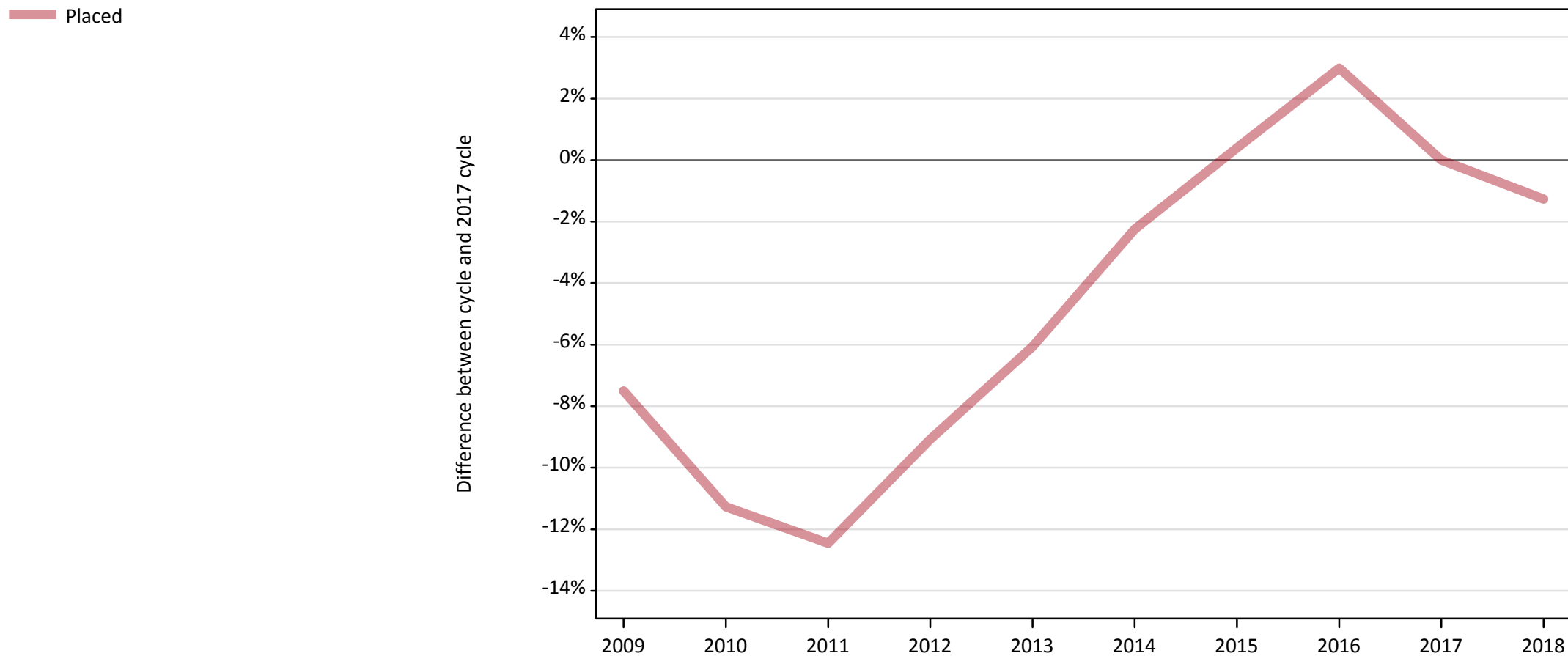
Applicant type	Status	2018
Main scheme	Placed (Clearing)	360
	Placed (Adjustment)	10
	Placed (Firm)	14,990
	Placed (Insurance)	770
	Placed (Other)	460
	Holding offer	1,740
	Free to be placed in Clearing	3,250
Direct to Clearing	Placed (Direct to Clearing)	180
	Other (Direct to Clearing)	350
All applicants	Placed	16,780

## A.2 Summary of applicants who are placed, holding offers or free to be placed in Clearing ( Wales )



### A.3 All placed applicants from Wales: 1 day after A level results day

All placed applicants: difference between cycle and 2017 cycle



Note: The percentage change is not plotted in the above chart for groups with fewer than 30 placed applicants in any one cycle.

#### A.4 All placed applicants from Wales: 1 day after A level results day

All placed applicants: applicants at 1 day after A level results day

Applicant type	Status	2009	2010	2011	2012	2013	2014	2015	2016	2017	2018
All applicants	Placed	15,720	15,080	14,880	15,460	15,970	16,620	17,070	17,510	17,000	16,780

#### A.5 All placed applicants from Wales: 1 day after A level results day

All placed applicants: difference between cycle and 2017 cycle

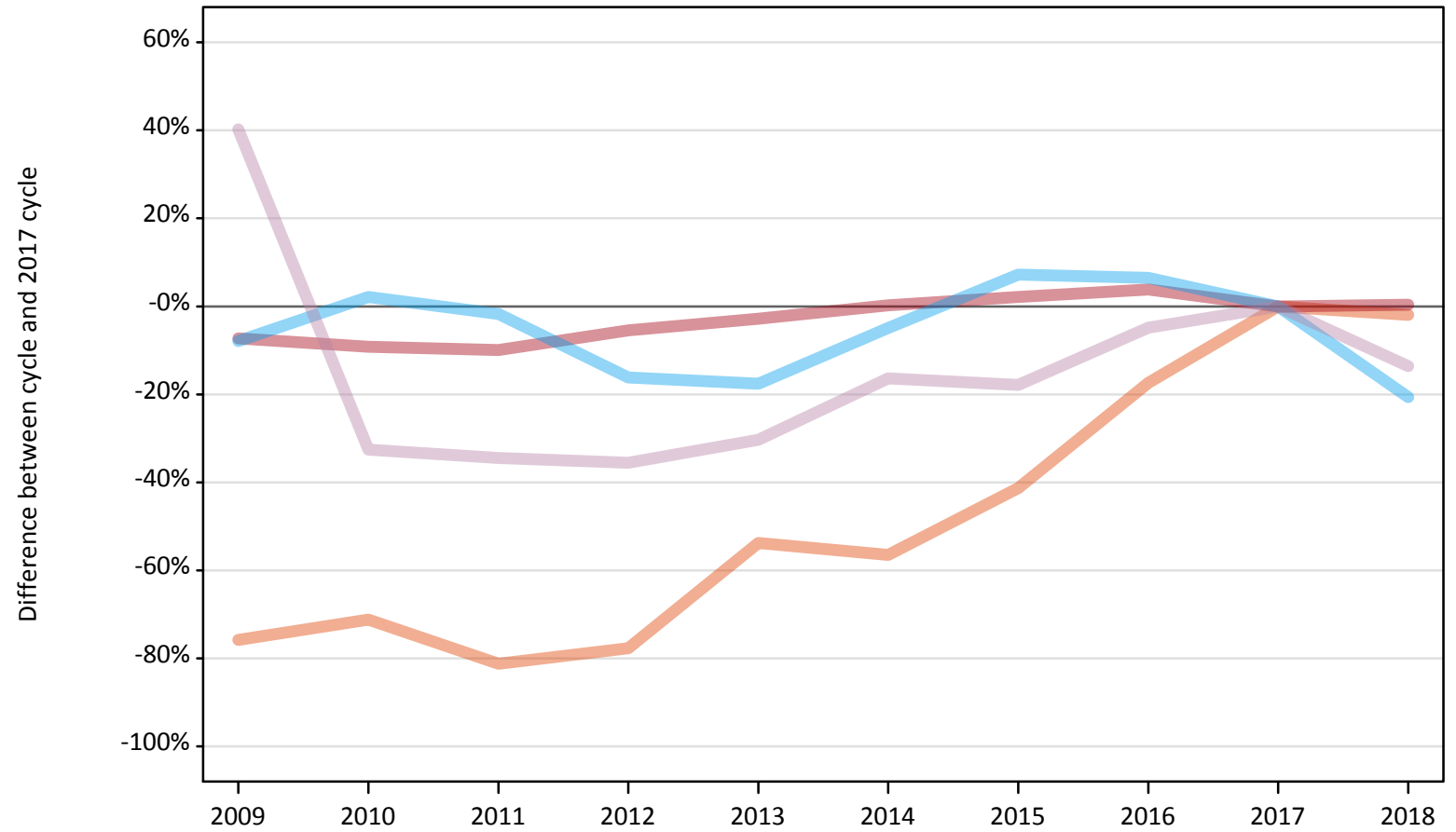
Applicant type	Status	2009	2010	2011	2012	2013	2014	2015	2016	2017	2018
All applicants	Placed	-8%	-11%	-12%	-9%	-6%	-2%	0%	3%	0%	-1%

Note: The percentage change is not recorded in the above table for groups with fewer than 10 placed applicants in that cycle or in the 2017 cycle.

## A.6 Placed main scheme applicants from Wales: 1 day after A level results day

All Main scheme placed routes (excluding Adjustment): difference between cycle and 2017 cycle

- Placed (Clearing)
- Placed (Firm)
- Placed (Insurance)
- Placed (Other)



Note: The percentage change is not plotted in the above chart for groups with fewer than 30 placed applicants in any one cycle.

### A.7 Placed main scheme applicants from Wales: 1 day after A level results day

All Main scheme placed routes (excluding Adjustment): applicants at 1 day after A level results day

Applicant type	Status	2009	2010	2011	2012	2013	2014	2015	2016	2017	2018
Main scheme	Placed (Clearing)	90	110	70	80	170	160	220	300	370	360
	Placed (Firm)	13,850	13,570	13,450	14,130	14,520	14,980	15,250	15,510	14,940	14,990
	Placed (Insurance)	900	990	960	820	800	930	1,040	1,040	970	770
	Placed (Other)	750	360	350	350	370	450	440	510	540	460

### A.8 Placed main scheme applicants from Wales: 1 day after A level results day

All Main scheme placed routes (excluding Adjustment): difference between cycle and 2017 cycle

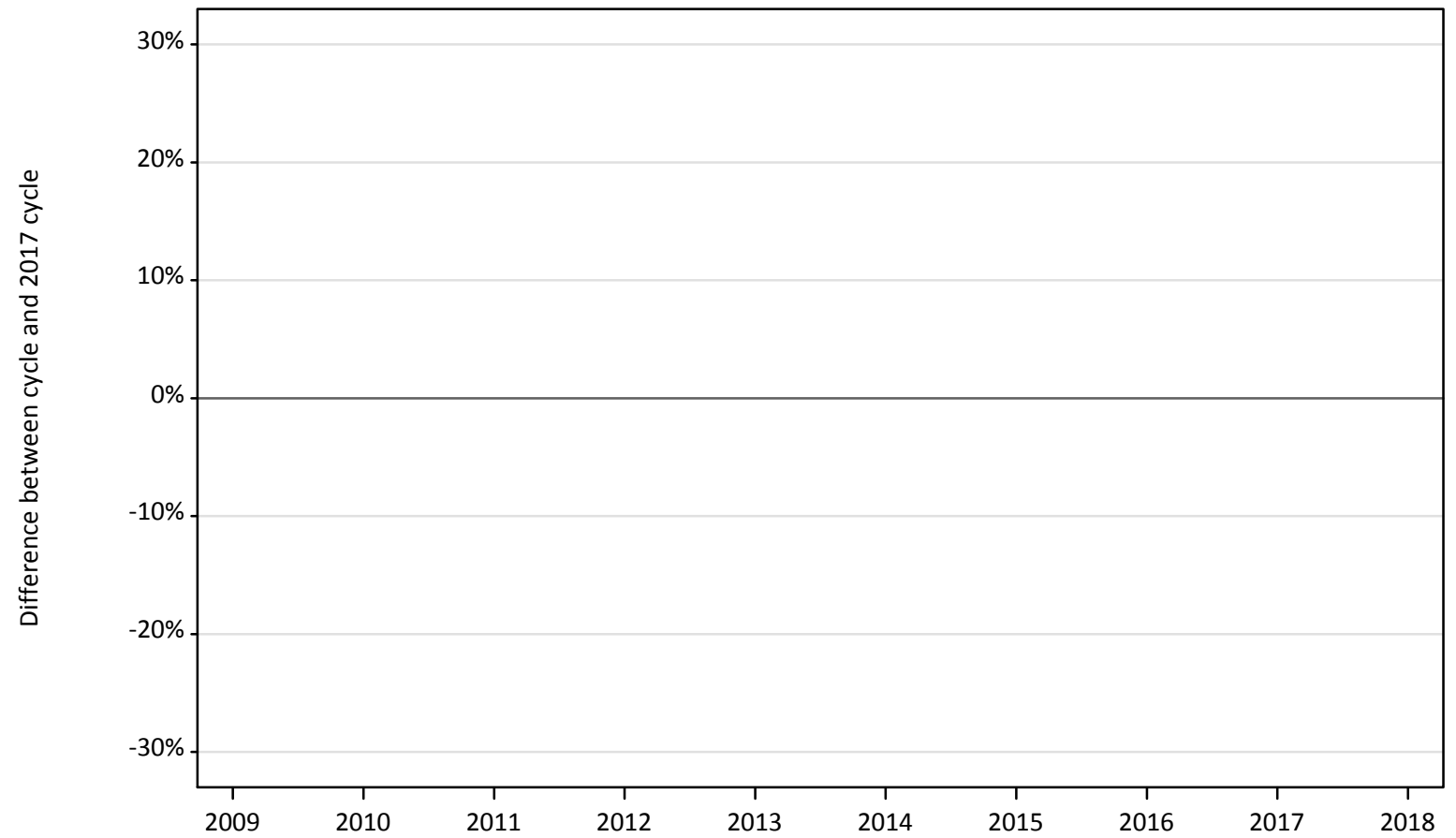
Applicant type	Status	2009	2010	2011	2012	2013	2014	2015	2016	2017	2018
Main scheme	Placed (Clearing)	-76%	-71%	-81%	-78%	-54%	-57%	-41%	-17%	0%	-2%
	Placed (Firm)	-7%	-9%	-10%	-5%	-3%	0%	2%	4%	0%	0%
	Placed (Insurance)	-8%	2%	-2%	-16%	-18%	-5%	7%	6%	0%	-21%
	Placed (Other)	40%	-33%	-34%	-36%	-30%	-16%	-18%	-5%	0%	-14%

Note: The percentage change is not recorded in the above table for groups with fewer than 10 placed applicants in that cycle or in the 2017 cycle.

## A.9 Main scheme applicants placed through adjustment: 1 day after A level results day

Placed through adjustment: difference between cycle and 2017 cycle

Placed (Adjustment)



Note: The percentage change is not plotted in the above chart for groups with fewer than 30 placed applicants in any one cycle.

### A.10 Main scheme applicants placed through adjustment: 1 day after A level results day

Placed through adjustment: applicants at 1 day after A level results day

Applicant type	Status	2009	2010	2011	2012	2013	2014	2015	2016	2017	2018
Main scheme	Placed (Adjustment)	0	0	0	0	0	10	10	10	10	10

### A.11 Main scheme applicants placed through adjustment: 1 day after A level results day

Placed through adjustment: difference between cycle and 2017 cycle

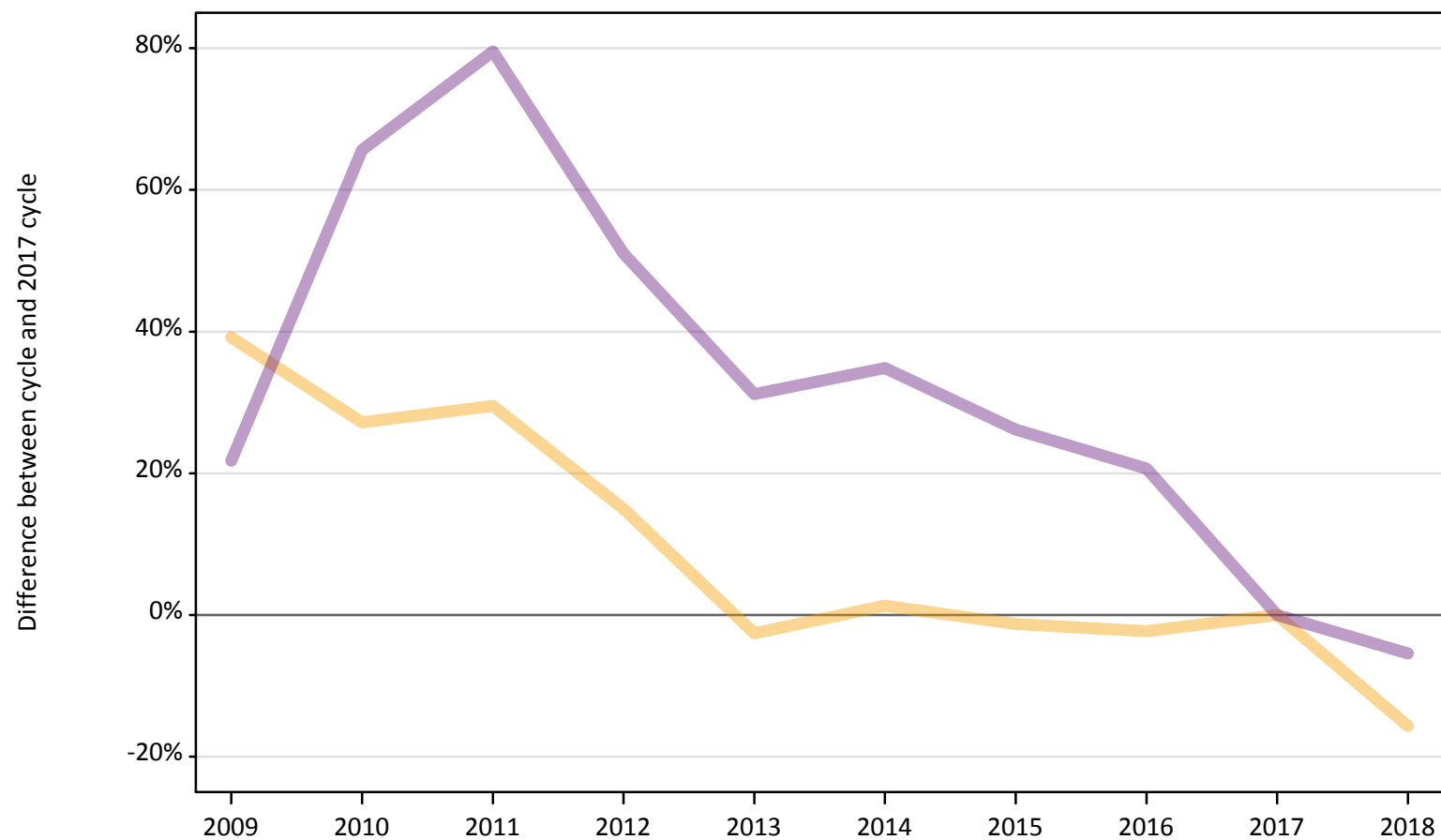
Applicant type	Status	2009	2010	2011	2012	2013	2014	2015	2016	2017	2018
Main scheme	Placed (Adjustment)						-30%	10%	-40%	0%	40%

Note: The percentage change is not recorded in the above table for groups with fewer than 10 placed applicants in that cycle or in the 2017 cycle.

## A.12 Main scheme applicants not currently placed from Wales: 1 day after A level results day

Applicants in unplaced states: difference between cycle and 2017 cycle

— Holding offer  
— Free to be placed in Clearing



Note: The percentage change is not plotted in the above chart for groups with fewer than 30 unplaced applicants in any one cycle.



### A.13 Main scheme applicants not currently placed from Wales: 1 day after A level results day

Applicants in unplaced states: applicants at 1 day after A level results day

Applicant type	Status	2009	2010	2011	2012	2013	2014	2015	2016	2017	2018
Main scheme	Holding offer	2,870	2,620	2,670	2,370	2,010	2,090	2,040	2,010	2,060	1,740
	Free to be placed in Clearing	4,190	5,700	6,170	5,190	4,510	4,640	4,340	4,150	3,440	3,250

### A.14 Main scheme applicants not currently placed from Wales: 1 day after A level results day

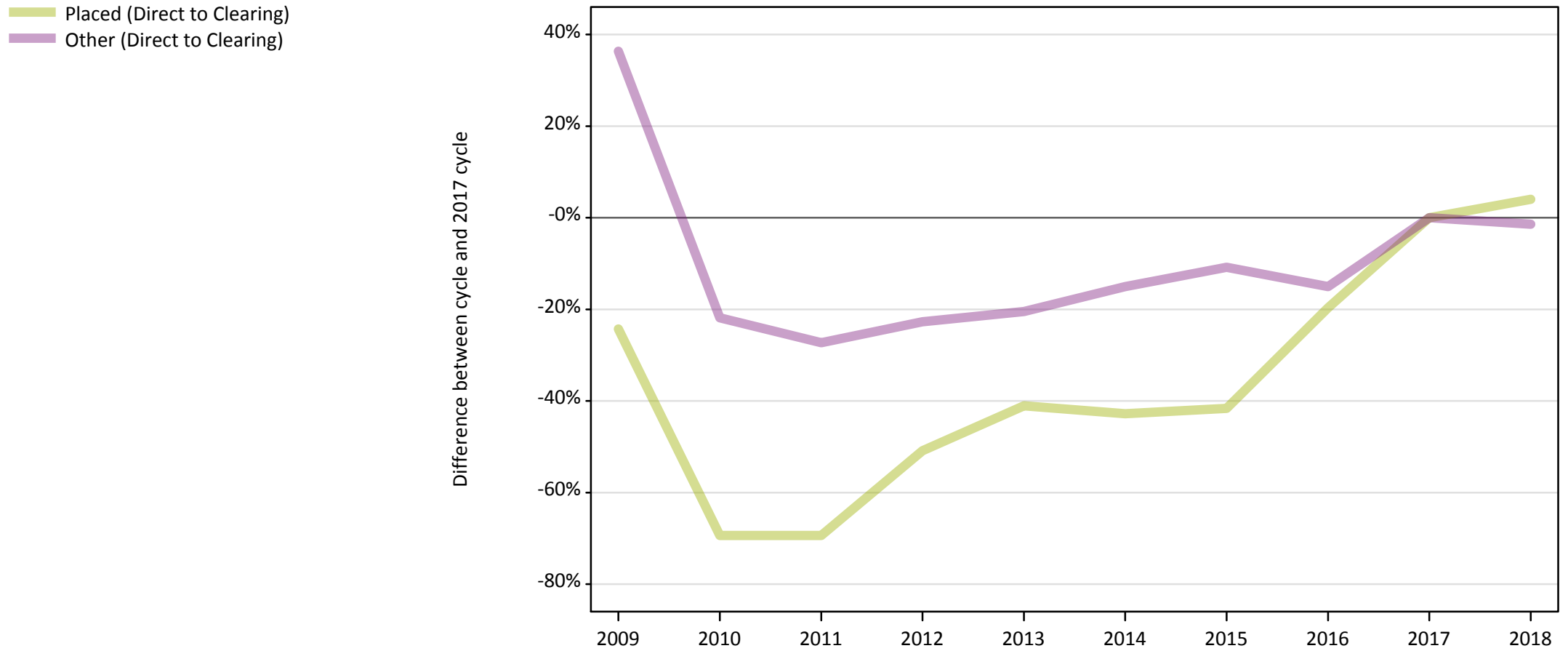
Applicants in unplaced states: difference between cycle and 2017 cycle

Applicant type	Status	2009	2010	2011	2012	2013	2014	2015	2016	2017	2018
Main scheme	Holding offer	39%	27%	30%	15%	-3%	1%	-1%	-2%	0%	-16%
	Free to be placed in Clearing	22%	66%	80%	51%	31%	35%	26%	21%	0%	-5%

Note: The percentage change is not recorded in the above table for groups with fewer than 10 unplaced applicants in that cycle or in the 2017 cycle.

### A.15 Direct to Clearing applicants from Wales: 1 day after A level results day

Direct to Clearing: difference between cycle and 2017 cycle



Note: The percentage change is not plotted in the above chart for groups with fewer than 30 placed applicants in any one cycle.

### A.16 Direct to Clearing applicants from Wales: 1 day after A level results day

Direct to Clearing 1 day after A level results day

Applicant type	Status	2009	2010	2011	2012	2013	2014	2015	2016	2017	2018
Direct to Clearing	Placed (Direct to Clearing)	130	50	50	90	100	100	100	140	170	180
	Other (Direct to Clearing)	480	280	260	270	280	300	310	300	350	350

### A.17 Direct to Clearing applicants from Wales: 1 day after A level results day

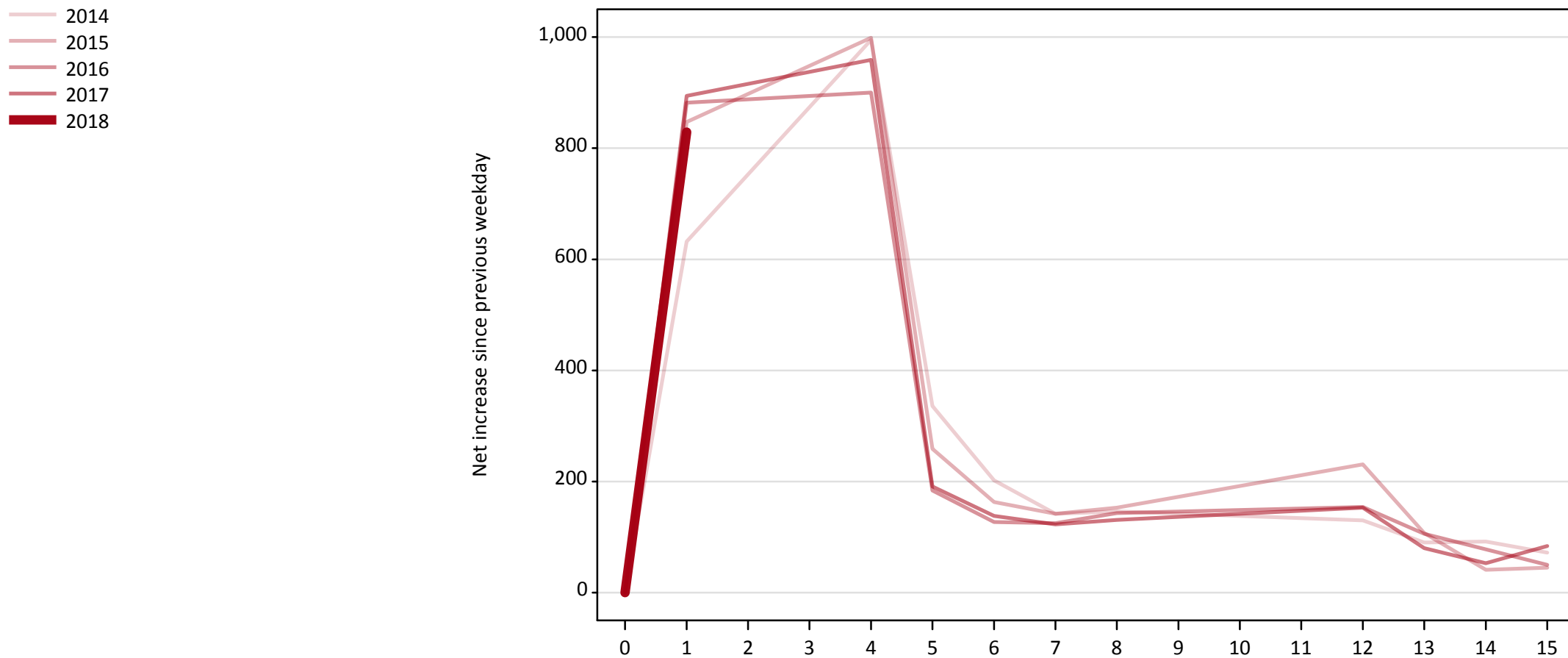
Direct to Clearing: difference between cycle and 2017 cycle

Applicant type	Status	2009	2010	2011	2012	2013	2014	2015	2016	2017	2018
Direct to Clearing	Placed (Direct to Clearing)	-24%	-69%	-69%	-51%	-41%	-43%	-42%	-20%	0%	4%
	Other (Direct to Clearing)	36%	-22%	-27%	-23%	-20%	-15%	-11%	-15%	0%	-1%

Note: The percentage change is not recorded in the above table for groups with fewer than 10 placed applicants in that cycle or in the 2017 cycle.

### A.18 All Placed: Daily net change (from Wales)

Net increase since previous weekday (2018 cycle up to 1 day after A level results day)



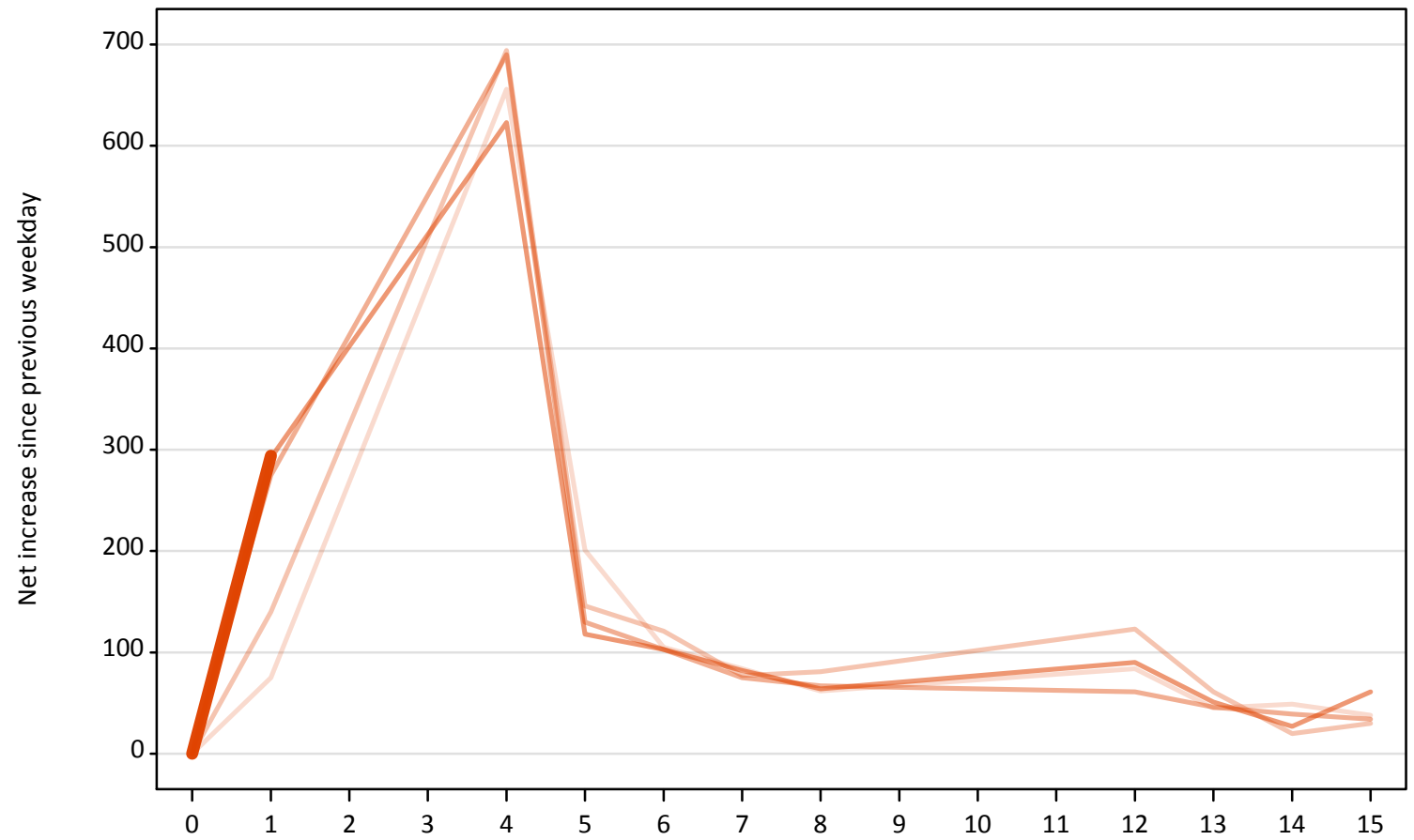
**A.19 All Placed: Daily net change (from Wales)**

Net increase since previous weekday (2018 cycle up to 1 day after A level results day)

Applicant status, days since A level results day	2014	2015	2016	2017	2018	
All Placed	0	0	0	0	0	
	1	630	850	880	890	830
	4	1,000	1,000	900	960	
	5	340	260	180	190	
	6	200	160	130	140	
	7	140	140	130	120	
	8	150	150	140	130	
	12	130	230	150	150	
	13	90	110	110	80	
	14	90	40	80	50	
	15	70	50	50	80	

**A.20 Placed through Clearing only: Daily net change (from Wales)**  
Net increase since previous weekday (2018 cycle up to 1 day after A level results day)

- 2014
- 2015
- 2016
- 2017
- 2018**



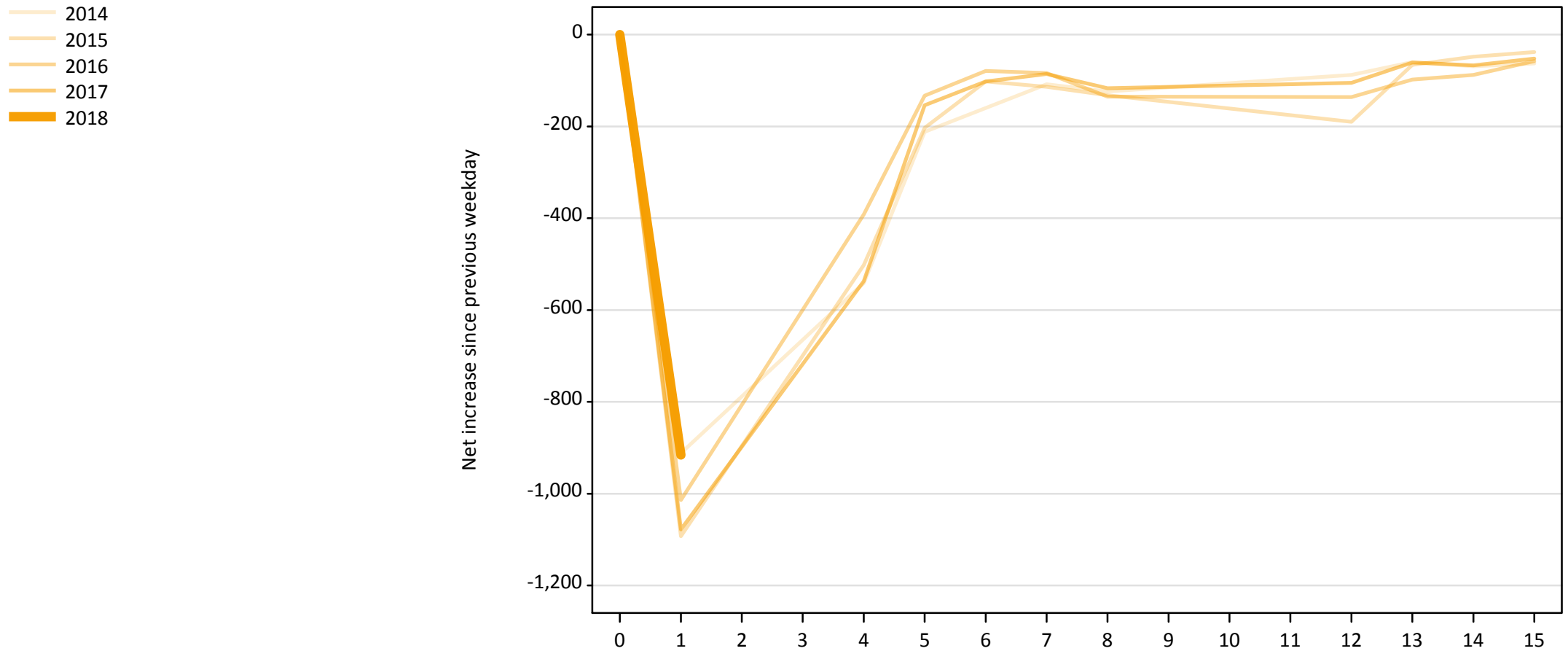
### A.21 Placed through Clearing only: Daily net change (from Wales)

Net increase since previous weekday (2018 cycle up to 1 day after A level results day)

Applicant status, days since A level results day		2014	2015	2016	2017	2018
Placed through Clearing only	0	0	0	0	0	0
	1	80	140	280	290	290
	4	660	690	690	620	
	5	200	150	130	120	
	6	110	120	100	100	
	7	80	80	80	80	
	8	60	80	70	60	
	12	80	120	60	90	
	13	50	60	50	50	
	14	50	20	40	30	
	15	40	30	30	60	

## A.22 Holding Offer: Daily net change (from Wales)

Net increase since previous weekday (2018 cycle up to 1 day after A level results day)





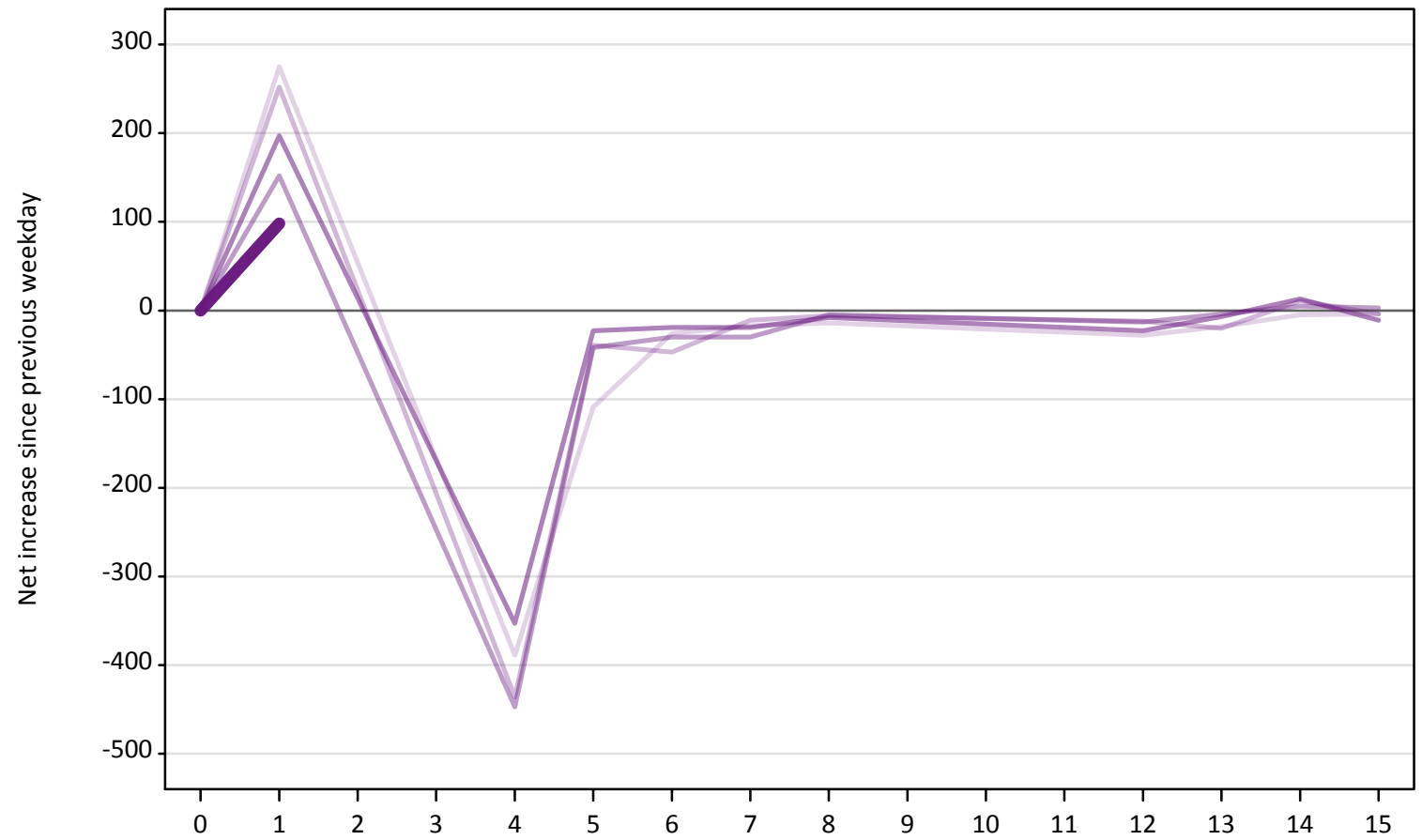
### A.23 Holding Offer: Daily net change (from Wales)

Net increase since previous weekday (2018 cycle up to 1 day after A level results day)

Applicant status, days since A level results day	2014	2015	2016	2017	2018	
Holding Offer	0	0	0	0	0	
	1	-910	-1,090	-1,010	-1,080	-920
	4	-540	-500	-390	-540	
	5	-210	-200	-130	-150	
	6	-160	-100	-80	-100	
	7	-110	-110	-80	-90	
	8	-120	-130	-140	-120	
	12	-90	-190	-140	-110	
	13	-60	-70	-100	-60	
	14	-70	-50	-90	-70	
	15	-60	-40	-60	-50	

**A.24 Free to be placed in Clearing: Daily net change (from Wales)**  
Net increase since previous weekday (2018 cycle up to 1 day after A level results day)

- 2014
- 2015
- 2016
- 2017
- 2018



**A.25 Free to be placed in Clearing: Daily net change (from Wales)**

Net increase since previous weekday (2018 cycle up to 1 day after A level results day)

Applicant status, days since A level results day		2014	2015	2016	2017	2018
Free to be placed in Clearing	0	0	0	0	0	0
	1	280	250	150	200	100
	4	-390	-440	-450	-350	
	5	-110	-40	-40	-20	
	6	-30	-50	-30	-20	
	7	-20	-10	-30	-20	
	8	-10	-10	-10	-10	
	12	-30	-10	-10	-20	
	13	-20	-20	0	-10	
	14	-10	10	10	10	
	15	0	0	0	-10	