

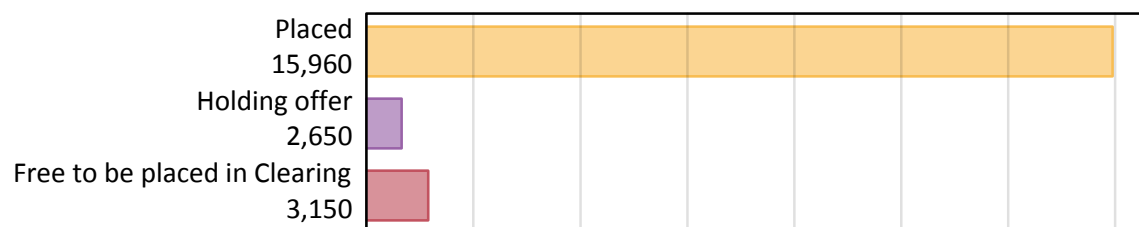
Daily Clearing Analysis: Overview

Analysis at 00:05 on Thursday 16 August 2018 (A level results day)

A.1 Applicants by type and status from Wales, 2018 cycle

Applicant type	Status	2018
Main scheme	Placed (Clearing)	100
	Placed (Adjustment)	0
	Placed (Firm)	14,570
	Placed (Insurance)	710
	Placed (Other)	430
	Holding offer	2,650
	Free to be placed in Clearing	3,150
Direct to Clearing	Placed (Direct to Clearing)	150
	Other (Direct to Clearing)	320
All applicants	Placed	15,960

A.2 Summary of applicants who are placed, holding offers or free to be placed in Clearing (Wales)



A.3 All placed applicants from Wales: A level results day
All placed applicants: difference between cycle and 2017 cycle



Note: The percentage change is not plotted in the above chart for groups with fewer than 30 placed applicants in any one cycle.

A.4 All placed applicants from Wales: A level results day

All placed applicants: applicants at A level results day

Applicant type	Status	2009	2010	2011	2012	2013	2014	2015	2016	2017	2018
All applicants	Placed	15,200	14,310	14,180	14,910	15,240	15,980	16,220	16,630	16,110	15,960

A.5 All placed applicants from Wales: A level results day

All placed applicants: difference between cycle and 2017 cycle

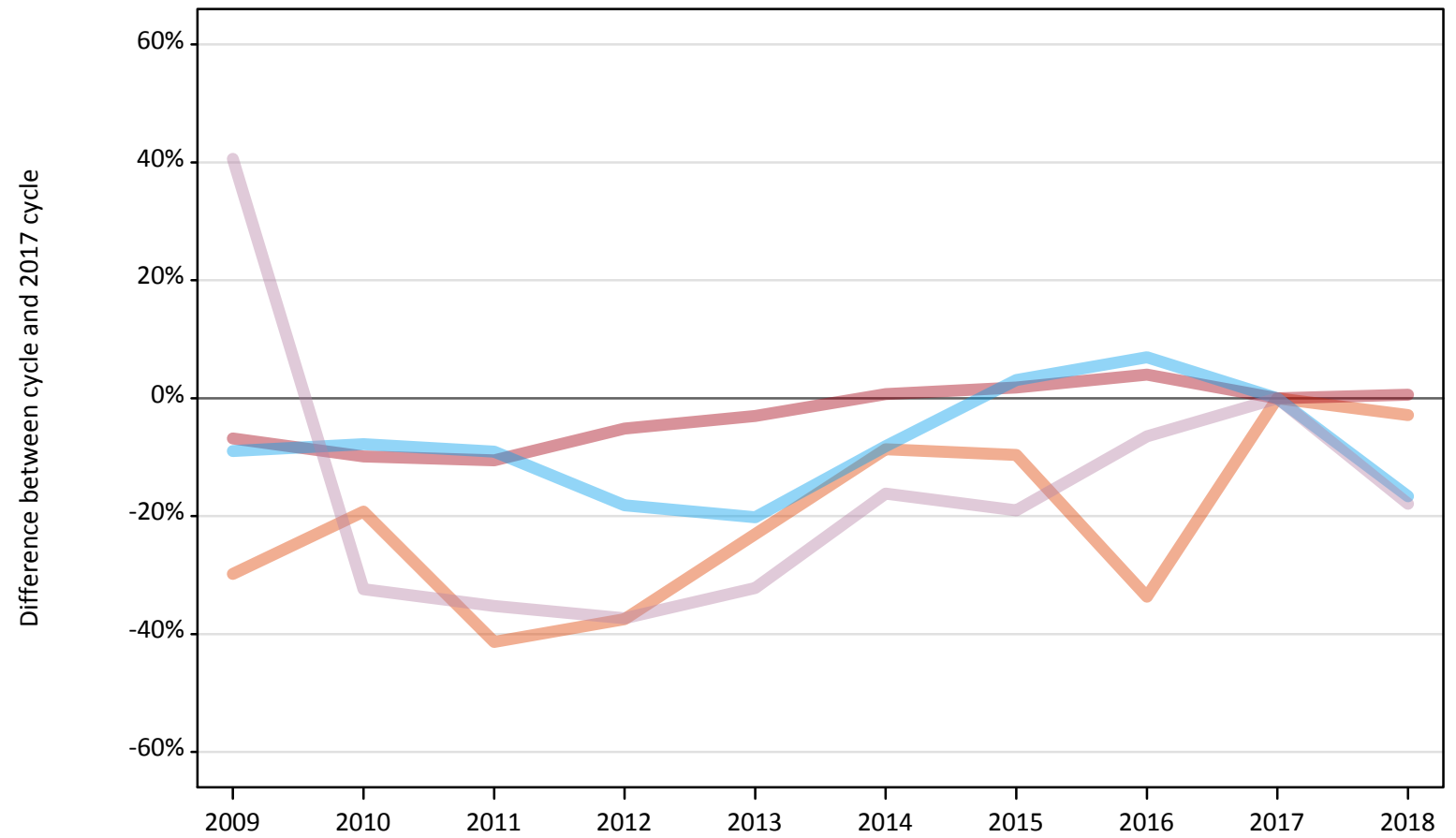
Applicant type	Status	2009	2010	2011	2012	2013	2014	2015	2016	2017	2018
All applicants	Placed	-6%	-11%	-12%	-7%	-5%	-1%	1%	3%	0%	-1%

Note: The percentage change is not recorded in the above table for groups with fewer than 10 placed applicants in that cycle or in the 2017 cycle.

A.6 Placed main scheme applicants from Wales: A level results day

All Main scheme placed routes (excluding Adjustment): difference between cycle and 2017 cycle

- Placed (Clearing)
- Placed (Firm)
- Placed (Insurance)
- Placed (Other)



Note: The percentage change is not plotted in the above chart for groups with fewer than 30 placed applicants in any one cycle.

A.7 Placed main scheme applicants from Wales: A level results day

All Main scheme placed routes (excluding Adjustment): applicants at A level results day

Applicant type	Status	2009	2010	2011	2012	2013	2014	2015	2016	2017	2018
Main scheme	Placed (Clearing)	70	80	60	70	80	100	90	70	100	100
	Placed (Firm)	13,500	13,050	12,960	13,740	14,040	14,580	14,740	15,060	14,480	14,570
	Placed (Insurance)	770	780	770	690	680	780	870	910	850	710
	Placed (Other)	740	360	340	330	360	440	430	490	530	430

A.8 Placed main scheme applicants from Wales: A level results day

All Main scheme placed routes (excluding Adjustment): difference between cycle and 2017 cycle

Applicant type	Status	2009	2010	2011	2012	2013	2014	2015	2016	2017	2018
Main scheme	Placed (Clearing)	-30%	-19%	-41%	-38%	-23%	-9%	-10%	-34%	0%	-3%
	Placed (Firm)	-7%	-10%	-11%	-5%	-3%	1%	2%	4%	0%	1%
	Placed (Insurance)	-9%	-8%	-9%	-18%	-20%	-8%	3%	7%	0%	-17%
	Placed (Other)	41%	-32%	-35%	-37%	-32%	-16%	-19%	-6%	0%	-18%

Note: The percentage change is not recorded in the above table for groups with fewer than 10 placed applicants in that cycle or in the 2017 cycle.

A.9 Main scheme applicants placed through adjustment: A level results day

Placed through adjustment: difference between cycle and 2017 cycle

[Analysis on placed by adjustment available from 18 August 2018]

A.10 Main scheme applicants placed through adjustment: A level results day

Placed through adjustment: applicants at A level results day

[Analysis on placed by adjustment available from 18 August 2018]

A.11 Main scheme applicants placed through adjustment: A level results day

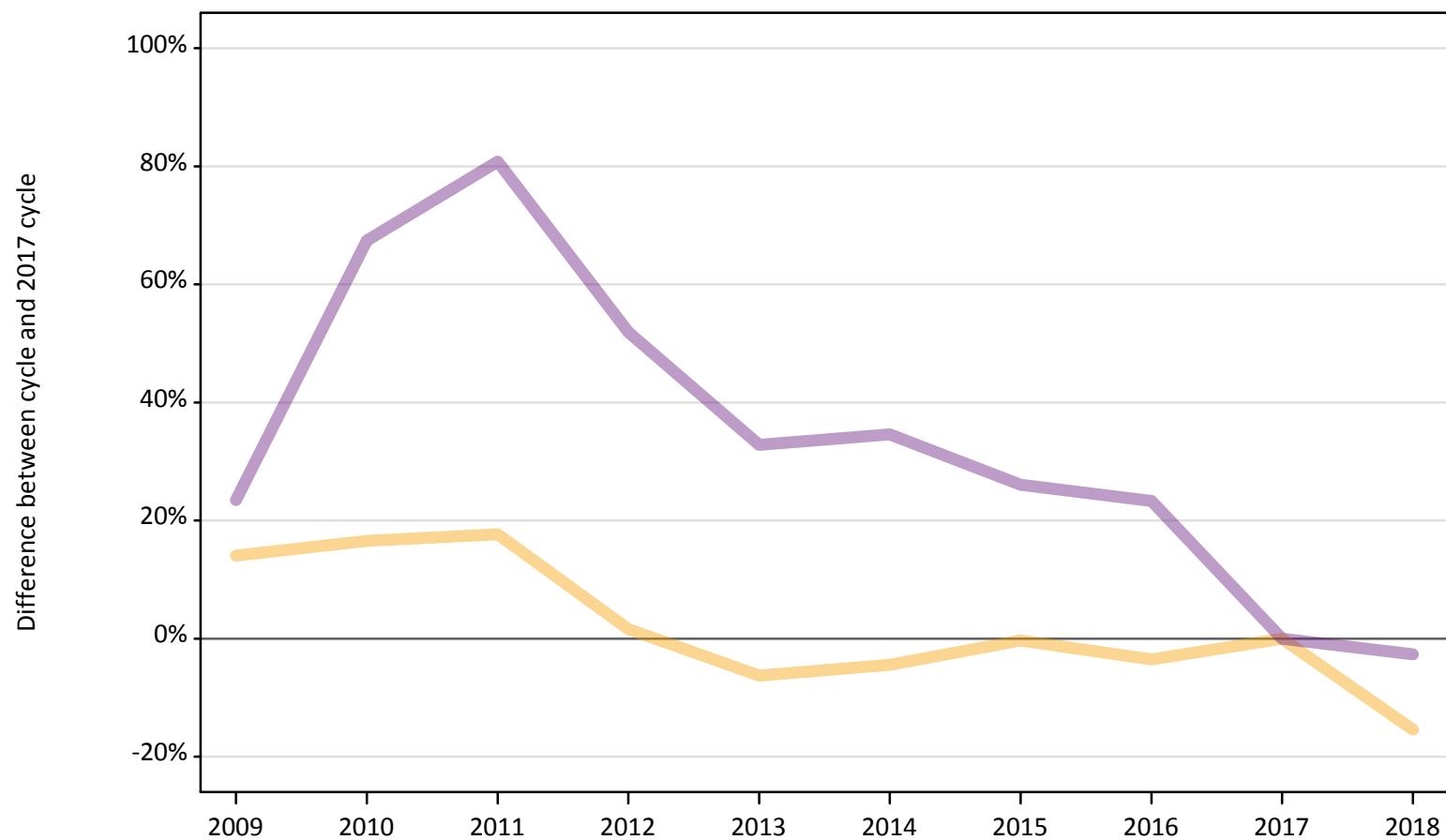
Placed through adjustment: difference between cycle and 2017 cycle

[Analysis on placed by adjustment available from 18 August 2018]

A.12 Main scheme applicants not currently placed from Wales: A level results day

Applicants in unplaced states: difference between cycle and 2017 cycle

— Holding offer
— Free to be placed in Clearing



Note: The percentage change is not plotted in the above chart for groups with fewer than 30 unplaced applicants in any one cycle.

A.13 Main scheme applicants not currently placed from Wales: A level results day

Applicants in unplaced states: applicants at A level results day

Applicant type	Status	2009	2010	2011	2012	2013	2014	2015	2016	2017	2018
Main scheme	Holding offer	3,580	3,660	3,690	3,190	2,940	3,000	3,130	3,030	3,140	2,650
	Free to be placed in Clearing	4,000	5,430	5,860	4,920	4,310	4,360	4,090	4,000	3,240	3,150

A.14 Main scheme applicants not currently placed from Wales: A level results day

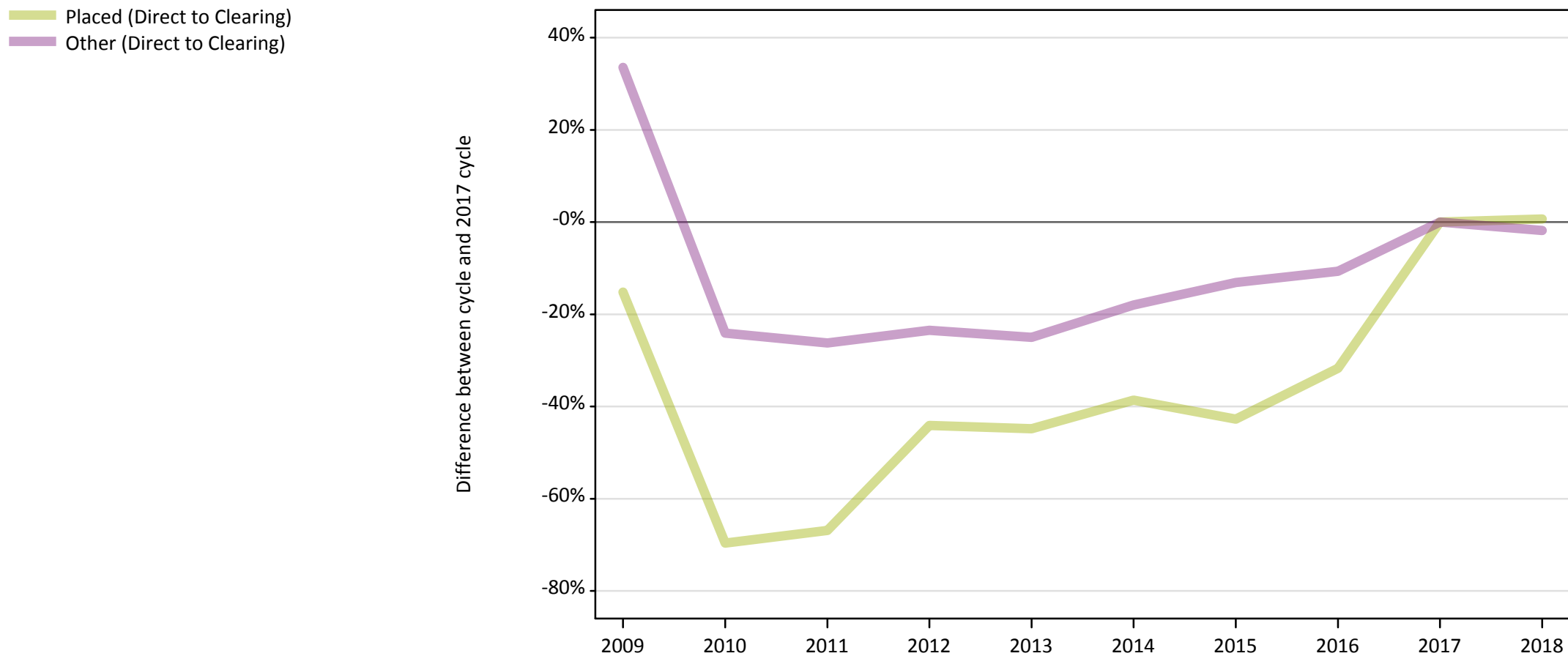
Applicants in unplaced states: difference between cycle and 2017 cycle

Applicant type	Status	2009	2010	2011	2012	2013	2014	2015	2016	2017	2018
Main scheme	Holding offer	14%	17%	18%	2%	-6%	-4%	-0%	-4%	0%	-15%
	Free to be placed in Clearing	23%	67%	81%	52%	33%	35%	26%	23%	0%	-3%

Note: The percentage change is not recorded in the above table for groups with fewer than 10 unplaced applicants in that cycle or in the 2017 cycle.

A.15 Direct to Clearing applicants from Wales: A level results day

Direct to Clearing: difference between cycle and 2017 cycle



Note: The percentage change is not plotted in the above chart for groups with fewer than 30 placed applicants in any one cycle.

A.16 Direct to Clearing applicants from Wales: A level results day

Direct to Clearing A level results day

Applicant type	Status	2009	2010	2011	2012	2013	2014	2015	2016	2017	2018
Direct to Clearing	Placed (Direct to Clearing)	120	40	50	80	80	90	80	100	150	150
	Other (Direct to Clearing)	440	250	240	250	250	270	290	290	330	320

A.17 Direct to Clearing applicants from Wales: A level results day

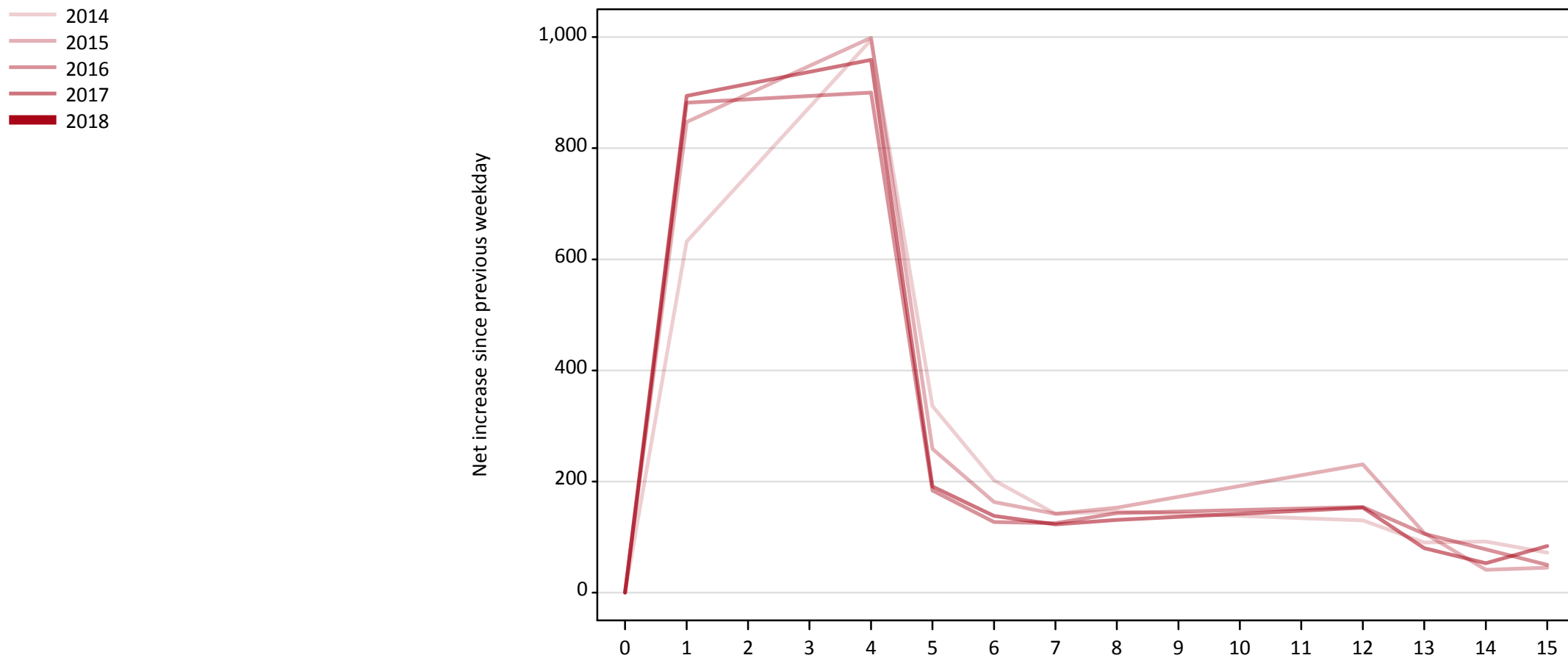
Direct to Clearing: difference between cycle and 2017 cycle

Applicant type	Status	2009	2010	2011	2012	2013	2014	2015	2016	2017	2018
Direct to Clearing	Placed (Direct to Clearing)	-15%	-70%	-67%	-44%	-45%	-39%	-43%	-32%	0%	1%
	Other (Direct to Clearing)	34%	-24%	-26%	-23%	-25%	-18%	-13%	-11%	0%	-2%

Note: The percentage change is not recorded in the above table for groups with fewer than 10 placed applicants in that cycle or in the 2017 cycle.

A.18 All Placed: Daily net change (from Wales)

Net increase since previous weekday (2018 cycle up to A level results day)



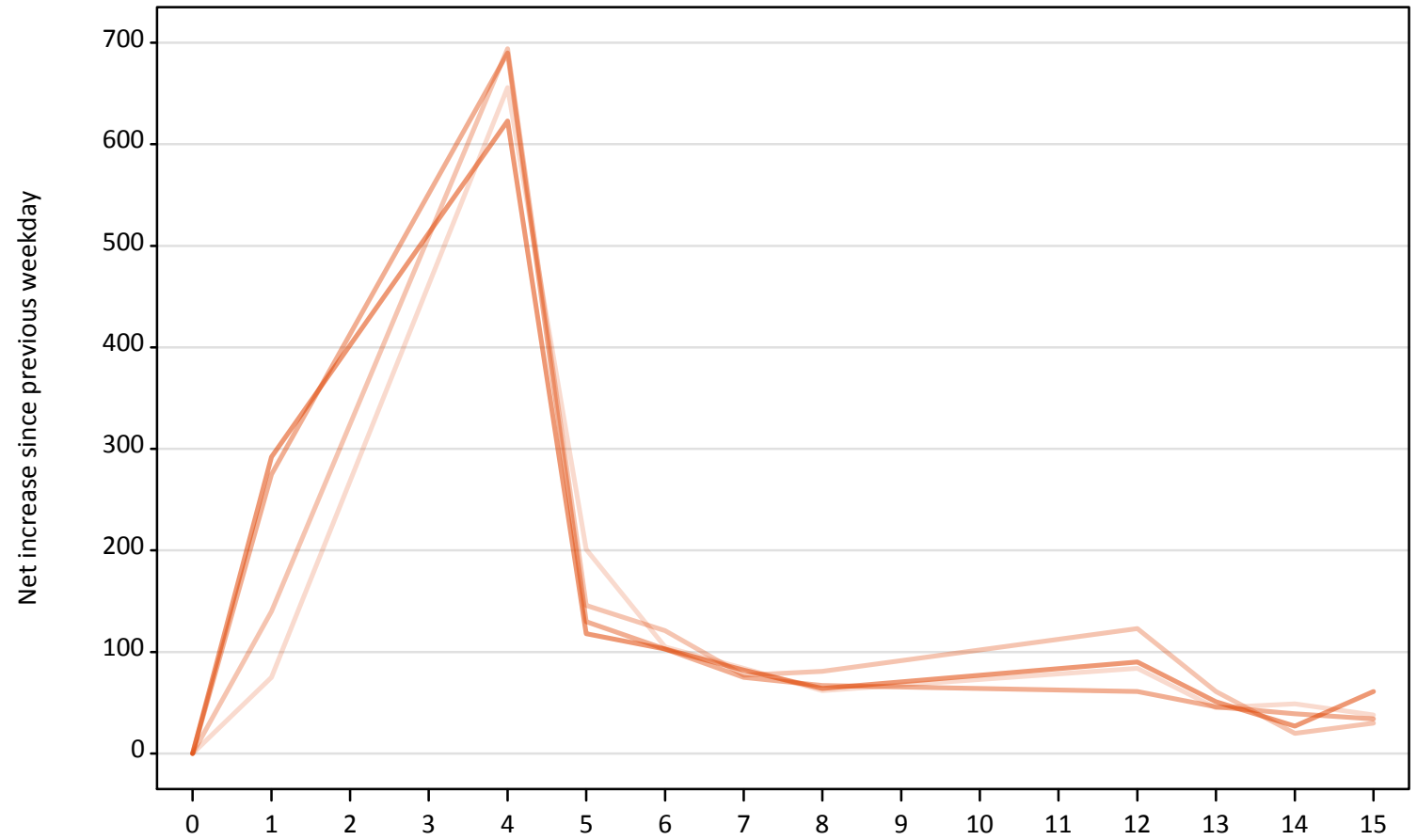
A.19 All Placed: Daily net change (from Wales)

Net increase since previous weekday (2018 cycle up to A level results day)

Applicant status, days since A level results day		2014	2015	2016	2017	2018
All Placed	0	0	0	0	0	0
	1	630	850	880	890	
	4	1,000	1,000	900	960	
	5	340	260	180	190	
	6	200	160	130	140	
	7	140	140	130	120	
	8	150	150	140	130	
	12	130	230	150	150	
	13	90	110	110	80	
	14	90	40	80	50	
	15	70	50	50	80	

A.20 Placed through Clearing only: Daily net change (from Wales)
Net increase since previous weekday (2018 cycle up to A level results day)

- 2014
- 2015
- 2016
- 2017
- 2018



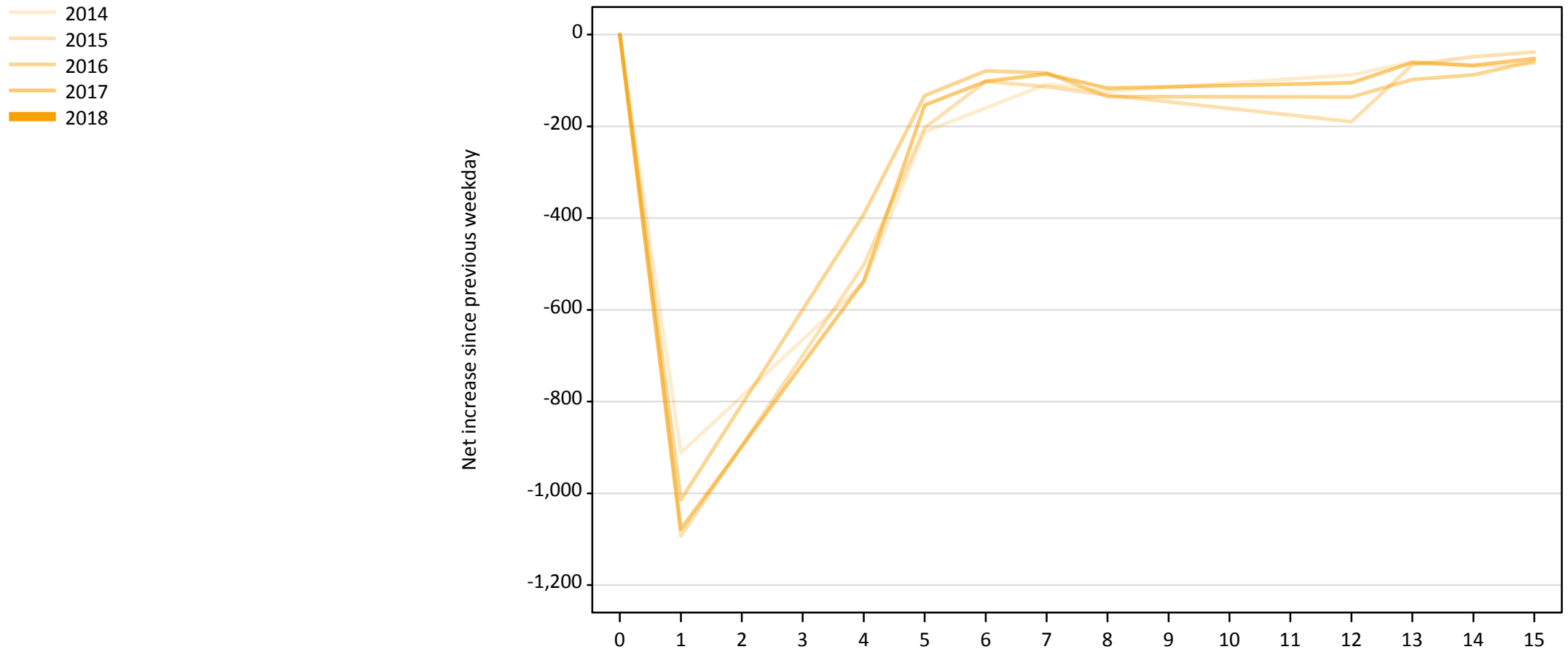
A.21 Placed through Clearing only: Daily net change (from Wales)

Net increase since previous weekday (2018 cycle up to A level results day)

Applicant status, days since A level results day		2014	2015	2016	2017	2018
Placed through Clearing only	0	0	0	0	0	0
	1	80	140	280	290	
	4	660	690	690	620	
	5	200	150	130	120	
	6	110	120	100	100	
	7	80	80	80	80	
	8	60	80	70	60	
	12	80	120	60	90	
	13	50	60	50	50	
	14	50	20	40	30	
	15	40	30	30	60	

A.22 Holding Offer: Daily net change (from Wales)

Net increase since previous weekday (2018 cycle up to A level results day)



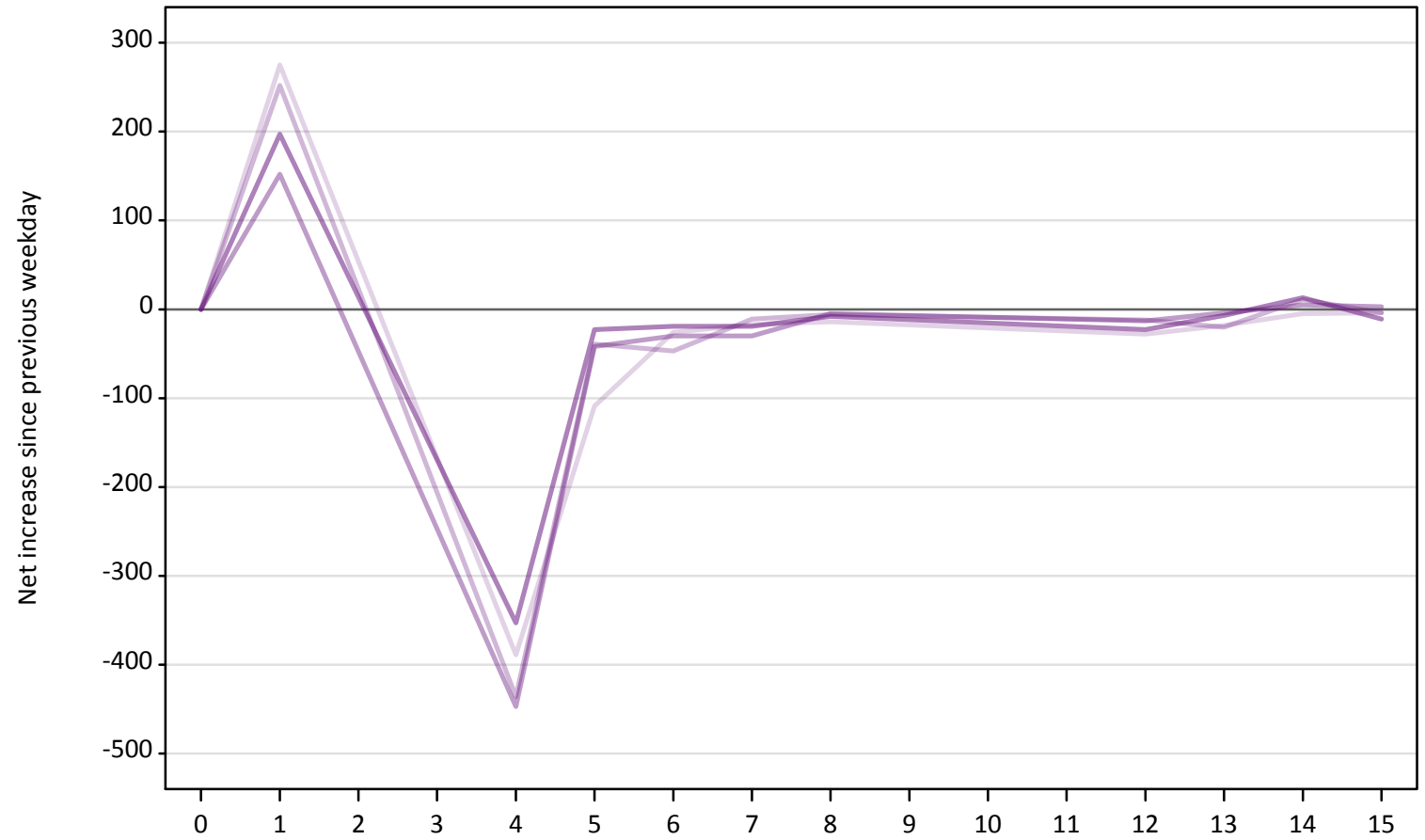
A.23 Holding Offer: Daily net change (from Wales)

Net increase since previous weekday (2018 cycle up to A level results day)

Applicant status, days since A level results day		2014	2015	2016	2017	2018
Holding Offer	0	0	0	0	0	0
	1	-910	-1,090	-1,010	-1,080	
	4	-540	-500	-390	-540	
	5	-210	-200	-130	-150	
	6	-160	-100	-80	-100	
	7	-110	-110	-80	-90	
	8	-120	-130	-140	-120	
	12	-90	-190	-140	-110	
	13	-60	-70	-100	-60	
	14	-70	-50	-90	-70	
	15	-60	-40	-60	-50	

A.24 Free to be placed in Clearing: Daily net change (from Wales)
Net increase since previous weekday (2018 cycle up to A level results day)

- 2014
- 2015
- 2016
- 2017
- 2018



A.25 Free to be placed in Clearing: Daily net change (from Wales)

Net increase since previous weekday (2018 cycle up to A level results day)

Applicant status, days since A level results day		2014	2015	2016	2017	2018
Free to be placed in Clearing	0	0	0	0	0	0
	1	280	250	150	200	
	4	-390	-440	-450	-350	
	5	-110	-40	-40	-20	
	6	-30	-50	-30	-20	
	7	-20	-10	-30	-20	
	8	-10	-10	-10	-10	
	12	-30	-10	-10	-20	
	13	-20	-20	0	-10	
	14	-10	10	10	10	
	15	0	0	0	-10	