

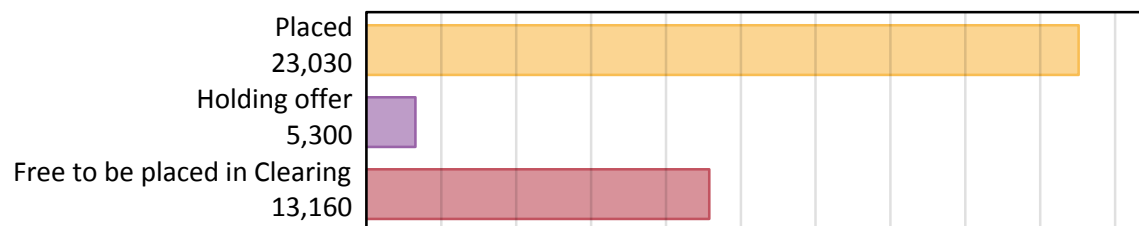
Daily Clearing Analysis: Overview

B7 Nursing analysis at 00:05 on Thursday 23 August 2018 (7 days after A level results day)

AB.1 Placed applicants to nursing from the UK, 2018 cycle

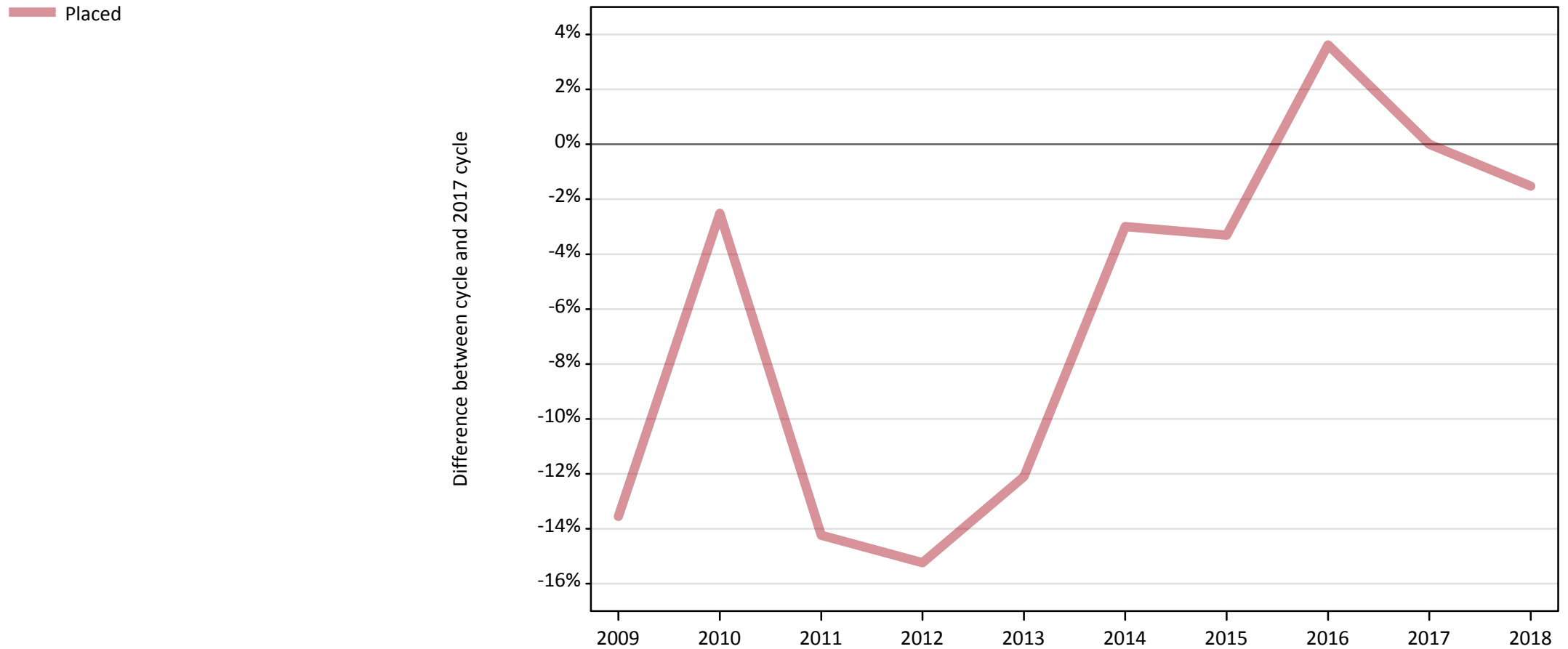
Applicant type	Status	2018
Main scheme	Placed (Clearing)	1,010
	Placed (Adjustment)	10
	Placed (Firm)	20,280
	Placed (Insurance)	450
	Placed (Other)	950
	Holding offer	5,300
	Free to be placed in Clearing	13,160
Direct to Clearing	Placed (Direct to Clearing)	330
	Other (Direct to Clearing)	440
All applicants	Placed	23,030

AB.2 Summary of nursing applicants who are placed, holding offers or free to be placed in Clearing (the UK)



AB.3 Placed applicants to nursing from the UK: 7 days after A level results day

Placed applicants to nursing: difference between cycle and 2017 cycle



Note: The percentage change is not plotted in the above chart for groups with fewer than 30 placed applicants in any one cycle.

AB.4 Placed applicants to nursing from the UK: 7 days after A level results day

Placed applicants to nursing: applicants at 7 days after A level results day

Applicant type	Status	2009	2010	2011	2012	2013	2014	2015	2016	2017	2018
All applicants	Placed	20,210	22,790	20,050	19,820	20,550	22,680	22,610	24,230	23,380	23,030

AB.5 Placed applicants to nursing from the UK: 7 days after A level results day

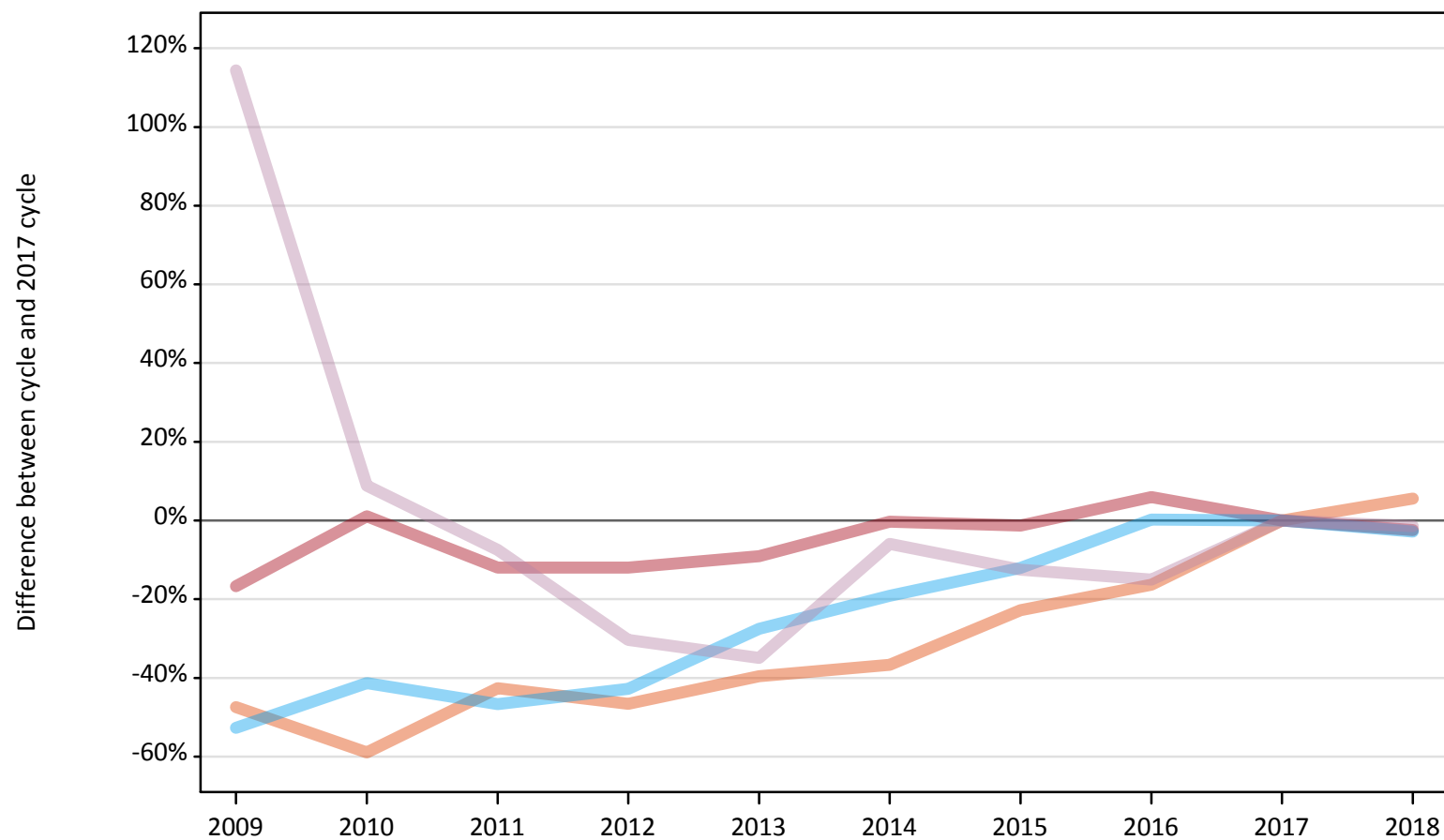
Placed applicants to nursing: difference between cycle and 2017 cycle

Applicant type	Status	2009	2010	2011	2012	2013	2014	2015	2016	2017	2018
All applicants	Placed	-14%	-3%	-14%	-15%	-12%	-3%	-3%	4%	0%	-2%

Note: The percentage change is not recorded in the above table for groups with fewer than 10 placed applicants in that cycle or in the 2017 cycle.

AB.6 Placed main scheme applicants to nursing from the UK: 7 days after A level results day
All Main scheme placed routes (excluding Adjustment): difference between cycle and 2017 cycle

- Placed (Clearing)
- Placed (Firm)
- Placed (Insurance)
- Placed (Other)



Note: The percentage change is not plotted in the above chart for groups with fewer than 30 placed applicants in any one cycle.

AB.7 Placed main scheme applicants to nursing from the UK: 7 days after A level results day

All Main scheme placed routes (excluding Adjustment): applicants at 7 days after A level results day

Applicant type	Status	2009	2010	2011	2012	2013	2014	2015	2016	2017	2018
Main scheme	Placed (Clearing)	500	390	550	510	580	610	740	800	960	1,010
	Placed (Firm)	17,310	21,020	18,300	18,300	18,900	20,730	20,520	22,020	20,790	20,280
	Placed (Insurance)	220	270	250	270	340	380	410	470	470	450
	Placed (Other)	2,060	1,050	890	670	630	900	840	820	960	950

AB.8 Placed main scheme applicants to nursing from the UK: 7 days after A level results day

All Main scheme placed routes (excluding Adjustment): difference between cycle and 2017 cycle

Applicant type	Status	2009	2010	2011	2012	2013	2014	2015	2016	2017	2018
Main scheme	Placed (Clearing)	-47%	-59%	-43%	-47%	-40%	-37%	-23%	-16%	0%	6%
	Placed (Firm)	-17%	1%	-12%	-12%	-9%	-0%	-1%	6%	0%	-2%
	Placed (Insurance)	-53%	-41%	-47%	-43%	-28%	-19%	-12%	0%	0%	-3%
	Placed (Other)	114%	9%	-8%	-30%	-35%	-6%	-13%	-15%	0%	-1%

Note: The percentage change is not recorded in the above table for groups with fewer than 10 placed applicants in that cycle or in the 2017 cycle.

AB.9 Main scheme applicants placed to nursing through adjustment: 7 days after A level results day

Placed through adjustment: difference between cycle and 2017 cycle

[This chart is not part of this report]

AB.10 Main scheme applicants placed to nursing through adjustment: 7 days after A level results day

Placed through adjustment: applicants at 7 days after A level results day

Applicant type	Status	2009	2010	2011	2012	2013	2014	2015	2016	2017	2018
Main scheme	Placed (Adjustment)	0	0	0	0	10	10	10	0	20	10

AB.11 Main scheme applicants placed to nursing through adjustment: 7 days after A level results day

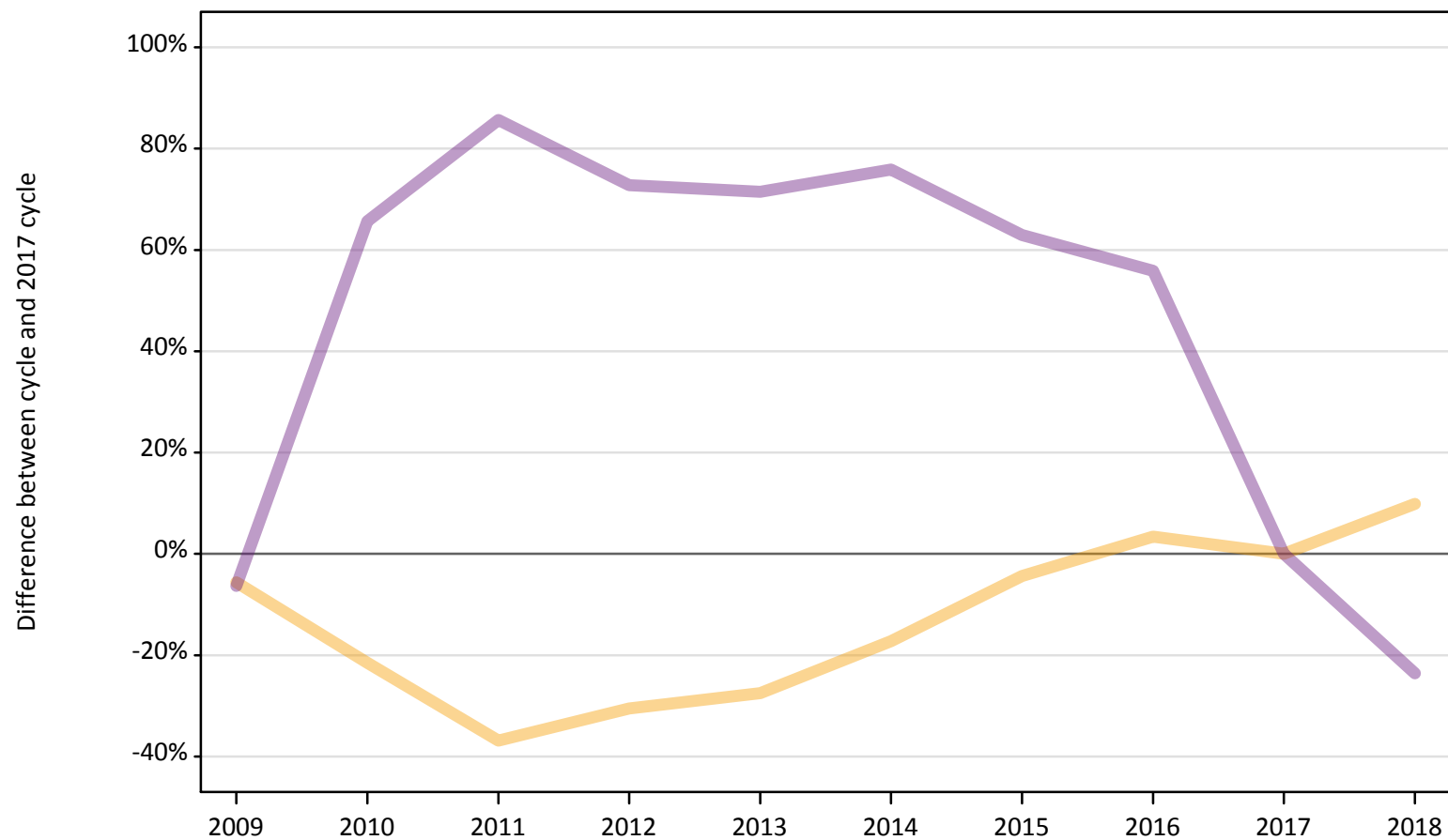
Placed through adjustment: difference between cycle and 2017 cycle

[This table is not part of this report]

AB.12 Main scheme applicants to nursing not currently placed from the UK: 7 days after A level results day

Applicants in unplaced states: difference between cycle and 2017 cycle

— Holding offer
— Free to be placed in Clearing



Note: The percentage change is not plotted in the above chart for groups with fewer than 30 unplaced applicants in any one cycle.

AB.13 Main scheme applicants to nursing not currently placed from the UK: 7 days after A level results day

Applicants in unplaced states: applicants at 7 days after A level results day

Applicant type	Status	2009	2010	2011	2012	2013	2014	2015	2016	2017	2018
Main scheme	Holding offer	4,550	3,790	3,050	3,350	3,500	3,990	4,620	4,990	4,830	5,300
	Free to be placed in Clearing	16,130	28,520	31,960	29,740	29,520	30,270	28,040	26,830	17,210	13,160

AB.14 Main scheme applicants to nursing not currently placed from the UK: 7 days after A level results day

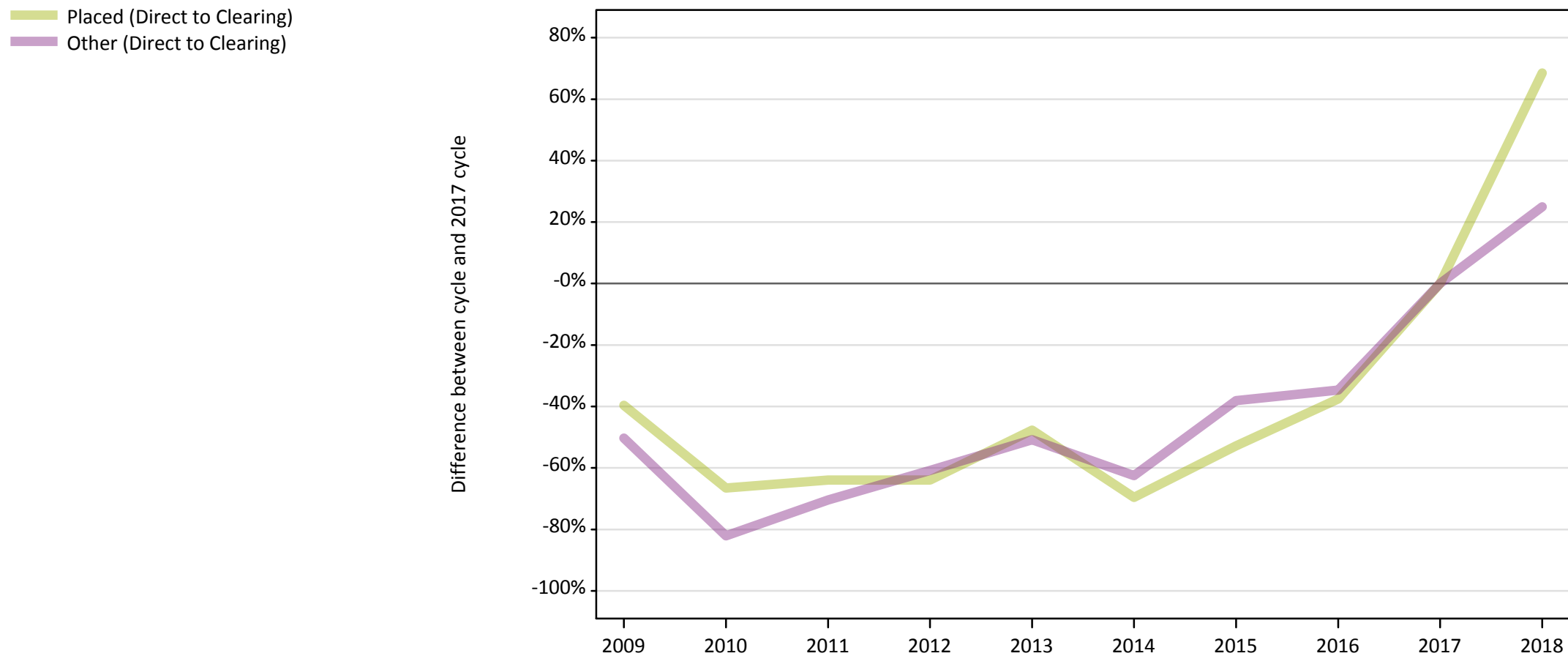
Applicants in unplaced states: difference between cycle and 2017 cycle

Applicant type	Status	2009	2010	2011	2012	2013	2014	2015	2016	2017	2018
Main scheme	Holding offer	-6%	-22%	-37%	-30%	-27%	-17%	-4%	3%	0%	10%
	Free to be placed in Clearing	-6%	66%	86%	73%	71%	76%	63%	56%	0%	-24%

Note: The percentage change is not recorded in the above table for groups with fewer than 10 unplaced applicants in that cycle or in the 2017 cycle.

AB.15 Direct to Clearing applicants from the UK: 7 days after A level results day

Direct to Clearing: difference between cycle and 2017 cycle



Note: The percentage change is not plotted in the above chart for groups with fewer than 30 placed applicants in any one cycle.

AB.16 Direct to Clearing applicants from the UK: 7 days after A level results day

Direct to Clearing 7 days after A level results day

Applicant type	Status	2009	2010	2011	2012	2013	2014	2015	2016	2017	2018
Direct to Clearing	Placed (Direct to Clearing)	120	70	70	70	100	60	90	120	200	330
	Other (Direct to Clearing)	180	60	100	140	170	130	220	230	350	440

AB.17 Direct to Clearing applicants from the UK: 7 days after A level results day

Direct to Clearing: difference between cycle and 2017 cycle

Applicant type	Status	2009	2010	2011	2012	2013	2014	2015	2016	2017	2018
Direct to Clearing	Placed (Direct to Clearing)	-40%	-66%	-64%	-64%	-48%	-70%	-53%	-38%	0%	69%
	Other (Direct to Clearing)	-50%	-82%	-70%	-61%	-51%	-63%	-38%	-35%	0%	25%

Note: The percentage change is not recorded in the above table for groups with fewer than 10 placed applicants in that cycle or in the 2017 cycle.