

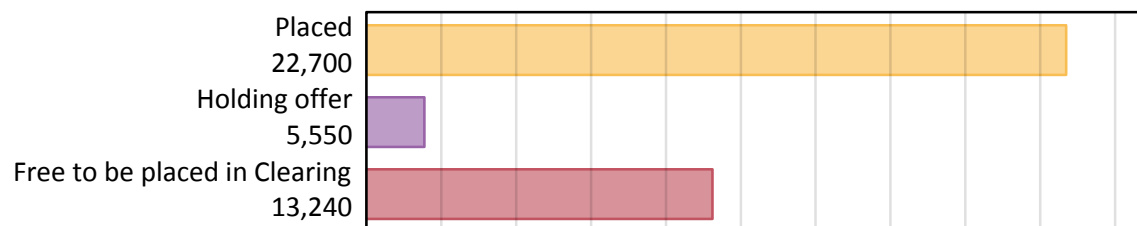
Daily Clearing Analysis: Overview

B7 Nursing analysis at 00:05 on Wednesday 22 August 2018 (6 days after A level results day)

AB.1 Placed applicants to nursing from the UK, 2018 cycle

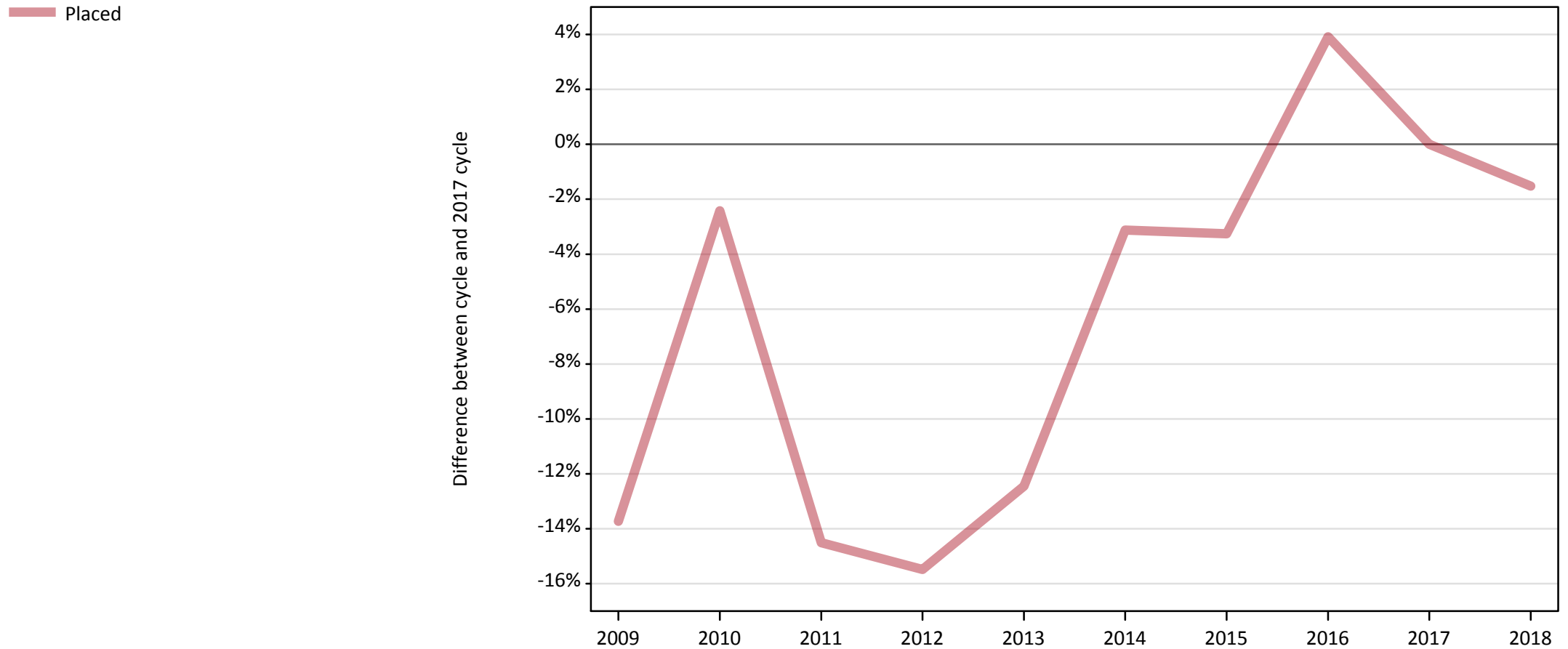
Applicant type	Status	2018
Main scheme	Placed (Clearing)	880
	Placed (Adjustment)	10
	Placed (Firm)	20,160
	Placed (Insurance)	440
	Placed (Other)	940
	Holding offer	5,550
	Free to be placed in Clearing	13,240
Direct to Clearing	Placed (Direct to Clearing)	280
	Other (Direct to Clearing)	420
All applicants	Placed	22,700

AB.2 Summary of nursing applicants who are placed, holding offers or free to be placed in Clearing (the UK)



AB.3 Placed applicants to nursing from the UK: 6 days after A level results day

Placed applicants to nursing: difference between cycle and 2017 cycle



Note: The percentage change is not plotted in the above chart for groups with fewer than 30 placed applicants in any one cycle.

AB.4 Placed applicants to nursing from the UK: 6 days after A level results day

Placed applicants to nursing: applicants at 6 days after A level results day

Applicant type	Status	2009	2010	2011	2012	2013	2014	2015	2016	2017	2018
All applicants	Placed	19,880	22,490	19,700	19,480	20,180	22,330	22,290	23,950	23,050	22,700

AB.5 Placed applicants to nursing from the UK: 6 days after A level results day

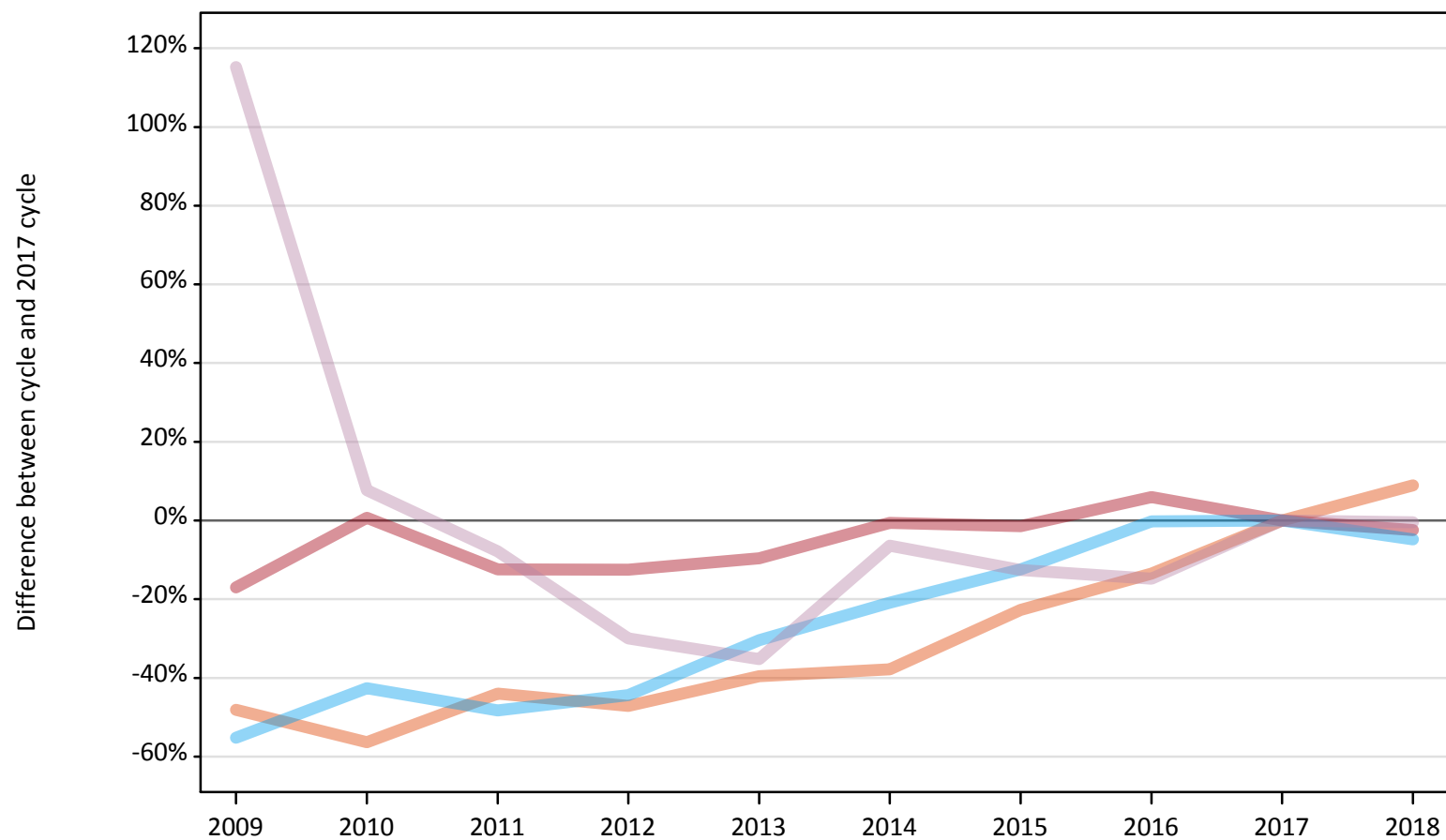
Placed applicants to nursing: difference between cycle and 2017 cycle

Applicant type	Status	2009	2010	2011	2012	2013	2014	2015	2016	2017	2018
All applicants	Placed	-14%	-2%	-15%	-15%	-12%	-3%	-3%	4%	0%	-2%

Note: The percentage change is not recorded in the above table for groups with fewer than 10 placed applicants in that cycle or in the 2017 cycle.

AB.6 Placed main scheme applicants to nursing from the UK: 6 days after A level results day
All Main scheme placed routes (excluding Adjustment): difference between cycle and 2017 cycle

- Placed (Clearing)
- Placed (Firm)
- Placed (Insurance)
- Placed (Other)



Note: The percentage change is not plotted in the above chart for groups with fewer than 30 placed applicants in any one cycle.

AB.7 Placed main scheme applicants to nursing from the UK: 6 days after A level results day

All Main scheme placed routes (excluding Adjustment): applicants at 6 days after A level results day

Applicant type	Status	2009	2010	2011	2012	2013	2014	2015	2016	2017	2018
Main scheme	Placed (Clearing)	420	350	450	430	490	500	630	700	810	880
	Placed (Firm)	17,140	20,800	18,090	18,070	18,660	20,530	20,360	21,880	20,650	20,160
	Placed (Insurance)	210	260	240	260	320	360	400	460	460	440
	Placed (Other)	2,020	1,010	870	660	610	880	820	800	940	940

AB.8 Placed main scheme applicants to nursing from the UK: 6 days after A level results day

All Main scheme placed routes (excluding Adjustment): difference between cycle and 2017 cycle

Applicant type	Status	2009	2010	2011	2012	2013	2014	2015	2016	2017	2018
Main scheme	Placed (Clearing)	-48%	-56%	-44%	-47%	-40%	-38%	-23%	-13%	0%	9%
	Placed (Firm)	-17%	1%	-12%	-13%	-10%	-1%	-1%	6%	0%	-2%
	Placed (Insurance)	-55%	-43%	-48%	-44%	-30%	-21%	-12%	-0%	0%	-5%
	Placed (Other)	115%	8%	-8%	-30%	-35%	-6%	-13%	-15%	0%	-0%

Note: The percentage change is not recorded in the above table for groups with fewer than 10 placed applicants in that cycle or in the 2017 cycle.

AB.9 Main scheme applicants placed to nursing through adjustment: 6 days after A level results day

Placed through adjustment: difference between cycle and 2017 cycle

[This chart is not part of this report]

AB.10 Main scheme applicants placed to nursing through adjustment: 6 days after A level results day

Placed through adjustment: applicants at 6 days after A level results day

Applicant type	Status	2009	2010	2011	2012	2013	2014	2015	2016	2017	2018
Main scheme	Placed (Adjustment)	0	0	0	0	10	10	10	0	20	10

AB.11 Main scheme applicants placed to nursing through adjustment: 6 days after A level results day

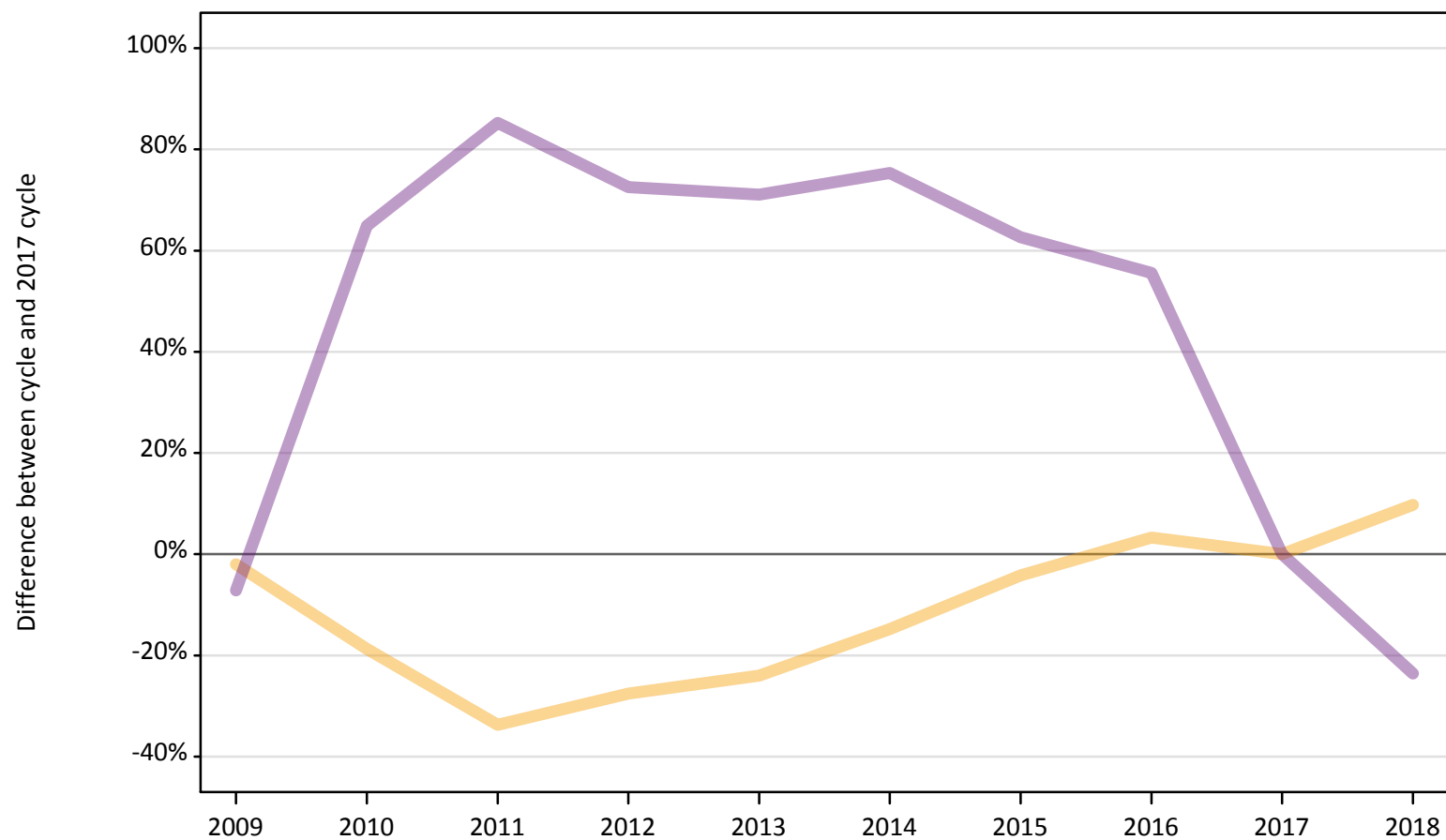
Placed through adjustment: difference between cycle and 2017 cycle

[This table is not part of this report]

AB.12 Main scheme applicants to nursing not currently placed from the UK: 6 days after A level results day

Applicants in unplaced states: difference between cycle and 2017 cycle

— Holding offer
— Free to be placed in Clearing



Note: The percentage change is not plotted in the above chart for groups with fewer than 30 unplaced applicants in any one cycle.

AB.13 Main scheme applicants to nursing not currently placed from the UK: 6 days after A level results day

Applicants in unplaced states: applicants at 6 days after A level results day

Applicant type	Status	2009	2010	2011	2012	2013	2014	2015	2016	2017	2018
Main scheme	Holding offer	4,950	4,110	3,350	3,660	3,840	4,310	4,840	5,220	5,050	5,550
	Free to be placed in Clearing	16,080	28,570	32,090	29,890	29,630	30,380	28,180	26,950	17,320	13,240

AB.14 Main scheme applicants to nursing not currently placed from the UK: 6 days after A level results day

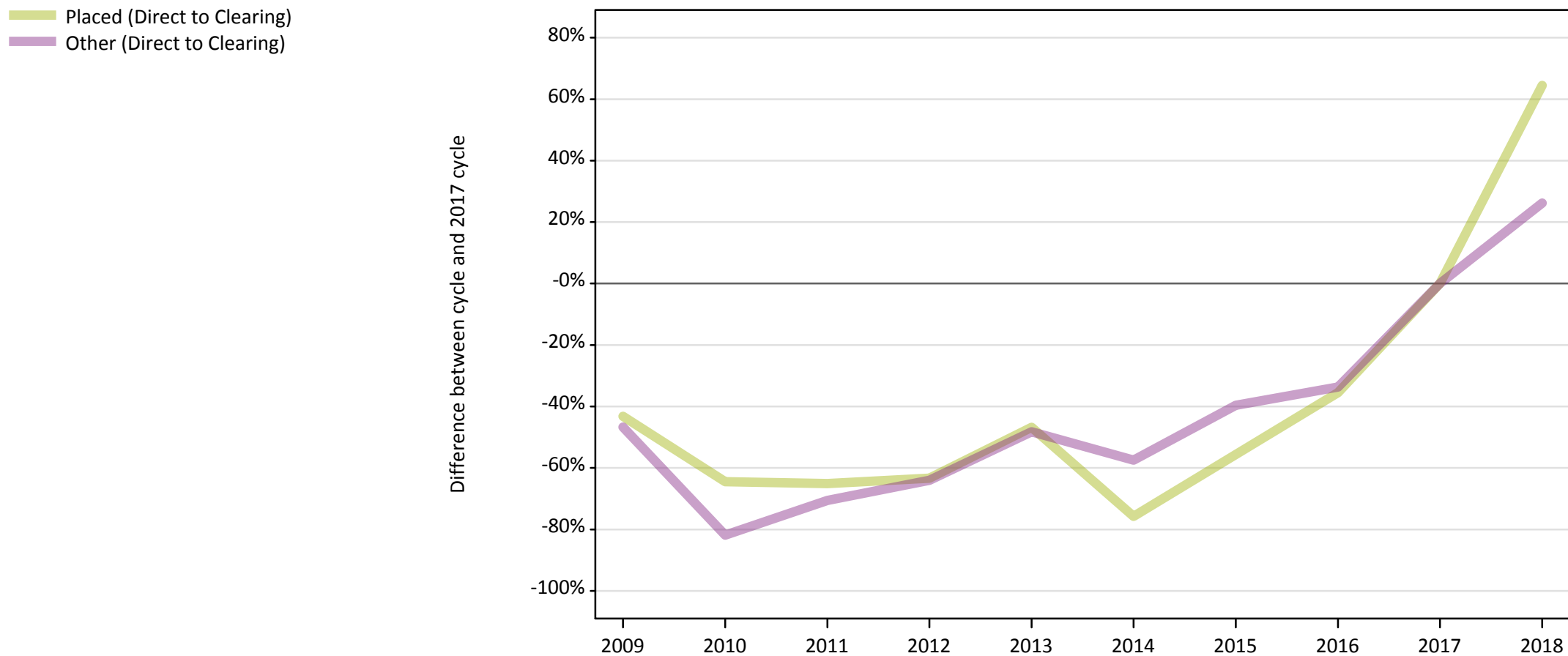
Applicants in unplaced states: difference between cycle and 2017 cycle

Applicant type	Status	2009	2010	2011	2012	2013	2014	2015	2016	2017	2018
Main scheme	Holding offer	-2%	-19%	-34%	-28%	-24%	-15%	-4%	3%	0%	10%
	Free to be placed in Clearing	-7%	65%	85%	73%	71%	75%	63%	56%	0%	-24%

Note: The percentage change is not recorded in the above table for groups with fewer than 10 unplaced applicants in that cycle or in the 2017 cycle.

AB.15 Direct to Clearing applicants from the UK: 6 days after A level results day

Direct to Clearing: difference between cycle and 2017 cycle



Note: The percentage change is not plotted in the above chart for groups with fewer than 30 placed applicants in any one cycle.

AB.16 Direct to Clearing applicants from the UK: 6 days after A level results day

Direct to Clearing 6 days after A level results day

Applicant type	Status	2009	2010	2011	2012	2013	2014	2015	2016	2017	2018
Direct to Clearing	Placed (Direct to Clearing)	100	60	60	60	90	40	80	110	170	280
	Other (Direct to Clearing)	180	60	100	120	170	140	200	220	340	420

AB.17 Direct to Clearing applicants from the UK: 6 days after A level results day

Direct to Clearing: difference between cycle and 2017 cycle

Applicant type	Status	2009	2010	2011	2012	2013	2014	2015	2016	2017	2018
Direct to Clearing	Placed (Direct to Clearing)	-43%	-64%	-65%	-63%	-47%	-76%	-56%	-36%	0%	64%
	Other (Direct to Clearing)	-47%	-82%	-71%	-64%	-48%	-57%	-40%	-34%	0%	26%

Note: The percentage change is not recorded in the above table for groups with fewer than 10 placed applicants in that cycle or in the 2017 cycle.