

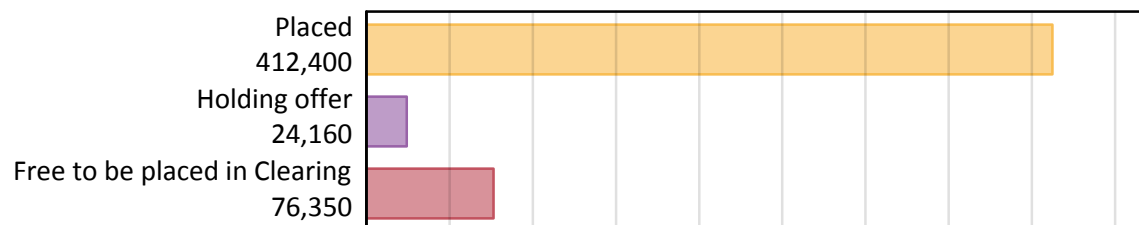
# Daily Clearing Analysis: Overview

Analysis at 00:05 on Tuesday 28 August 2018 (12 days after A level results day)

## A.1 Applicants by type and status from the UK, 2018 cycle

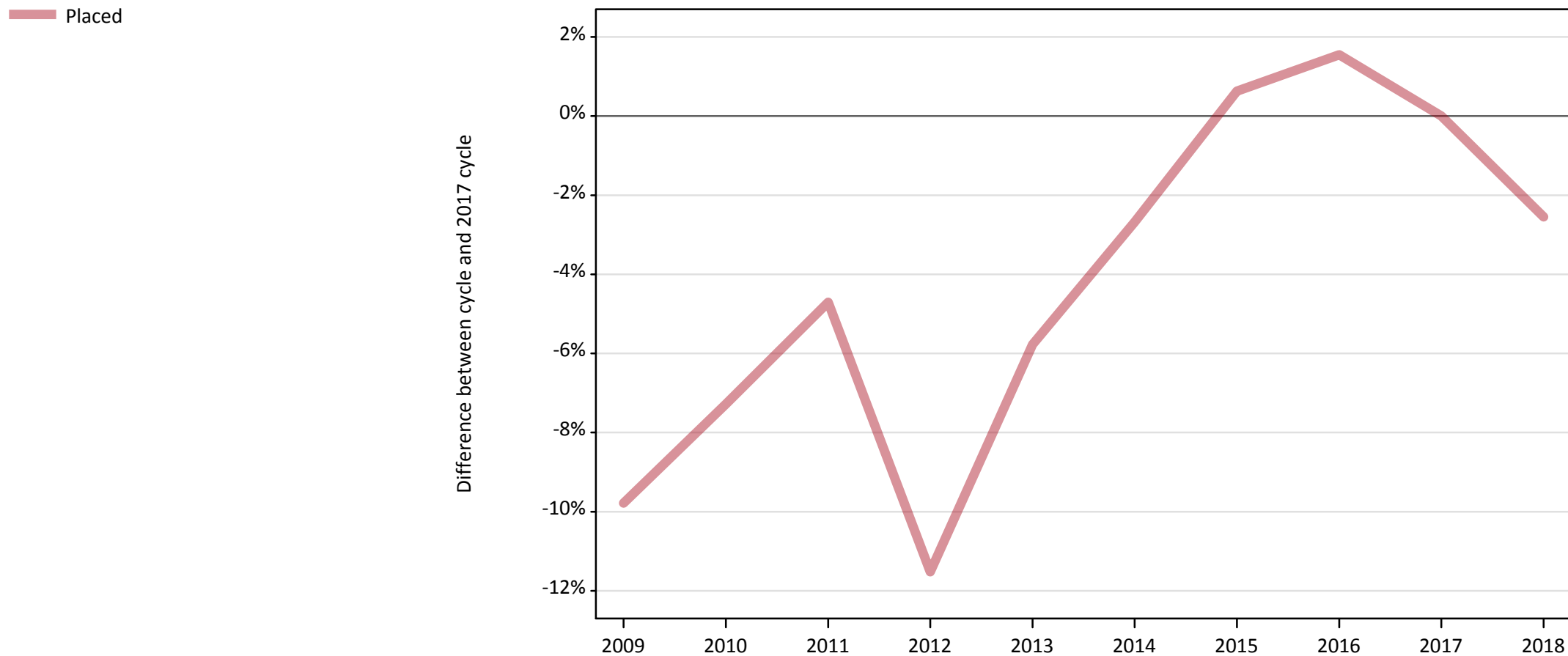
Applicant type	Status	2018
Main scheme	Placed (Clearing)	35,300
	Placed (Adjustment)	840
	Placed (Firm)	328,880
	Placed (Insurance)	27,970
	Placed (Other)	10,650
	Holding offer	24,160
	Free to be placed in Clearing	76,350
Direct to Clearing	Placed (Direct to Clearing)	8,770
	Other (Direct to Clearing)	6,710
All applicants	Placed	412,400

## A.2 Summary of applicants who are placed, holding offers or free to be placed in Clearing ( the UK )



### A.3 All placed applicants from the UK: 12 days after A level results day

All placed applicants: difference between cycle and 2017 cycle



Note: The percentage change is not plotted in the above chart for groups with fewer than 30 placed applicants in any one cycle.

#### A.4 All placed applicants from the UK: 12 days after A level results day

All placed applicants: applicants at 12 days after A level results day

Applicant type	Status	2009	2010	2011	2012	2013	2014	2015	2016	2017	2018
All applicants	Placed	381,780	392,370	403,270	374,430	398,750	411,860	425,850	429,750	423,190	412,400

#### A.5 All placed applicants from the UK: 12 days after A level results day

All placed applicants: difference between cycle and 2017 cycle

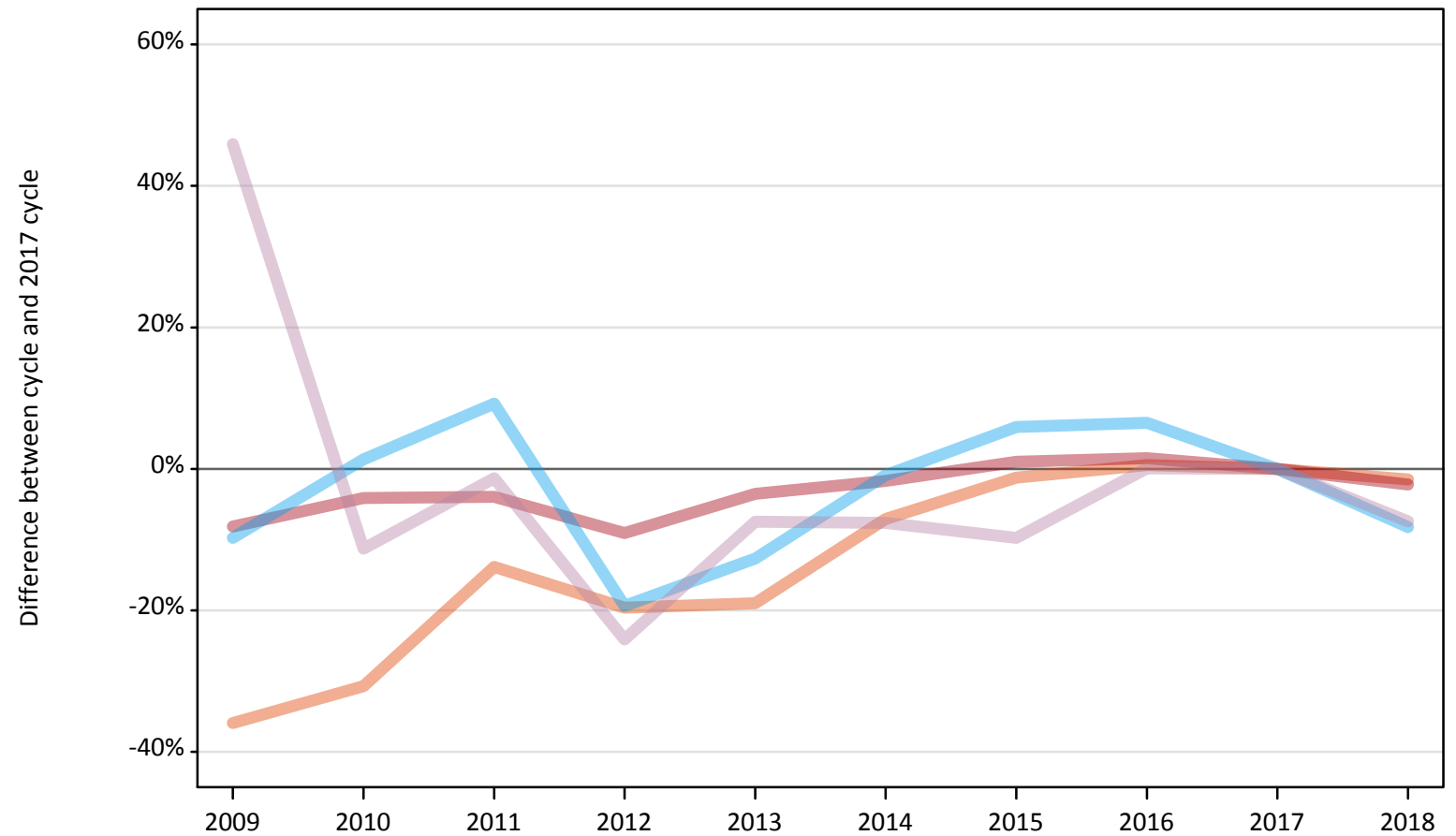
Applicant type	Status	2009	2010	2011	2012	2013	2014	2015	2016	2017	2018
All applicants	Placed	-10%	-7%	-5%	-12%	-6%	-3%	1%	2%	0%	-3%

Note: The percentage change is not recorded in the above table for groups with fewer than 10 placed applicants in that cycle or in the 2017 cycle.

## A.6 Placed main scheme applicants from the UK: 12 days after A level results day

All Main scheme placed routes (excluding Adjustment): difference between cycle and 2017 cycle

- Placed (Clearing)
- Placed (Firm)
- Placed (Insurance)
- Placed (Other)



Note: The percentage change is not plotted in the above chart for groups with fewer than 30 placed applicants in any one cycle.

### A.7 Placed main scheme applicants from the UK: 12 days after A level results day

All Main scheme placed routes (excluding Adjustment): applicants at 12 days after A level results day

Applicant type	Status	2009	2010	2011	2012	2013	2014	2015	2016	2017	2018
Main scheme	Placed (Clearing)	22,960	24,830	30,860	28,800	29,030	33,290	35,390	36,020	35,830	35,300
	Placed (Firm)	308,930	322,450	323,110	305,760	324,500	330,610	339,700	341,390	336,340	328,880
	Placed (Insurance)	27,520	30,910	33,300	24,590	26,620	30,210	32,300	32,480	30,490	27,970
	Placed (Other)	16,780	10,200	11,350	8,730	10,640	10,620	10,380	11,510	11,500	10,650

### A.8 Placed main scheme applicants from the UK: 12 days after A level results day

All Main scheme placed routes (excluding Adjustment): difference between cycle and 2017 cycle

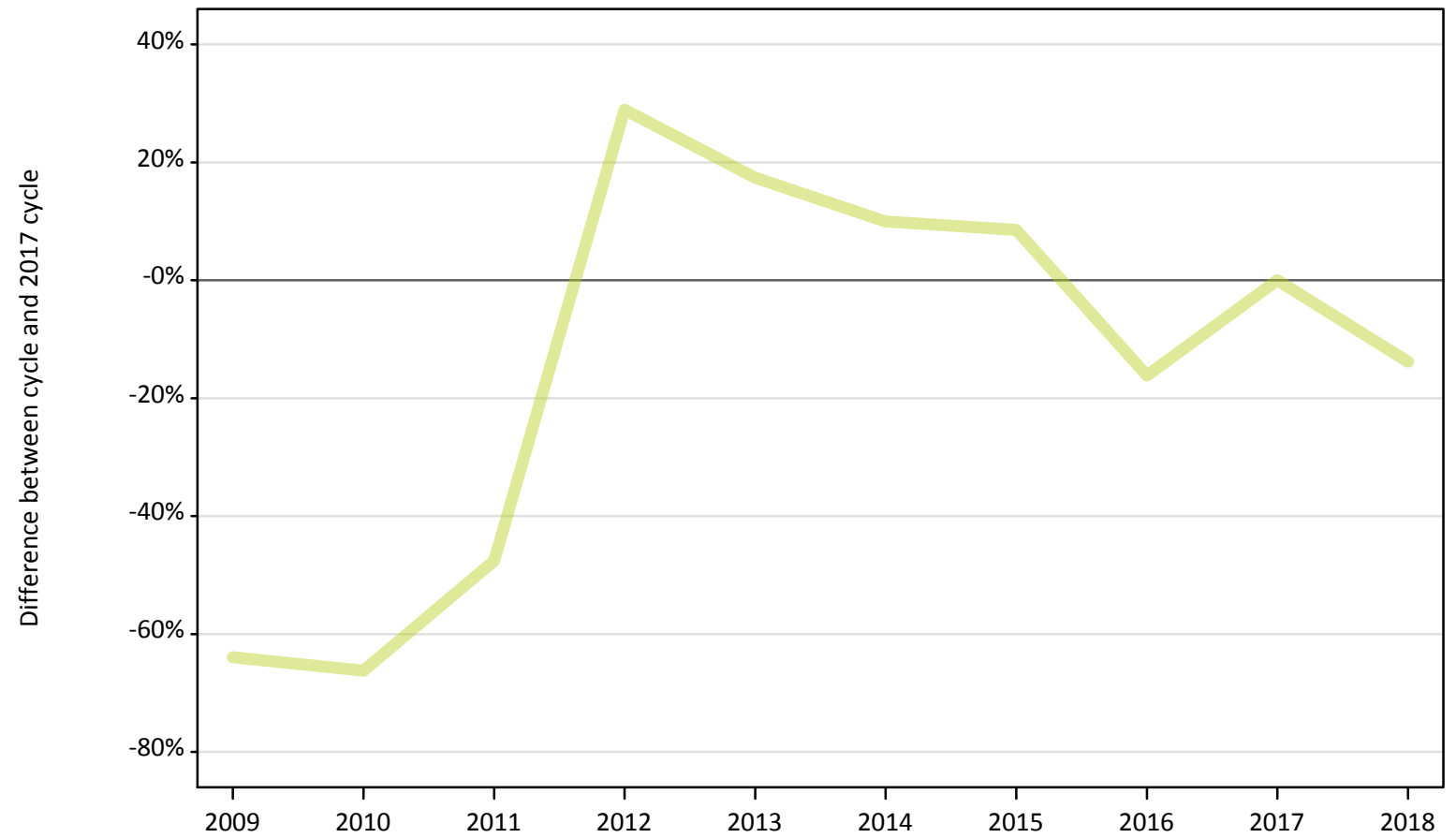
Applicant type	Status	2009	2010	2011	2012	2013	2014	2015	2016	2017	2018
Main scheme	Placed (Clearing)	-36%	-31%	-14%	-20%	-19%	-7%	-1%	1%	0%	-1%
	Placed (Firm)	-8%	-4%	-4%	-9%	-4%	-2%	1%	2%	0%	-2%
	Placed (Insurance)	-10%	1%	9%	-19%	-13%	-1%	6%	7%	0%	-8%
	Placed (Other)	46%	-11%	-1%	-24%	-7%	-8%	-10%	0%	0%	-7%

Note: The percentage change is not recorded in the above table for groups with fewer than 10 placed applicants in that cycle or in the 2017 cycle.

## A.9 Main scheme applicants placed through adjustment: 12 days after A level results day

Placed through adjustment: difference between cycle and 2017 cycle

Placed (Adjustment)



Note: The percentage change is not plotted in the above chart for groups with fewer than 30 placed applicants in any one cycle.

### A.10 Main scheme applicants placed through adjustment: 12 days after A level results day

Placed through adjustment: applicants at 12 days after A level results day

Applicant type	Status	2009	2010	2011	2012	2013	2014	2015	2016	2017	2018
Main scheme	Placed (Adjustment)	350	330	510	1,250	1,140	1,070	1,050	810	970	840

### A.11 Main scheme applicants placed through adjustment: 12 days after A level results day

Placed through adjustment: difference between cycle and 2017 cycle

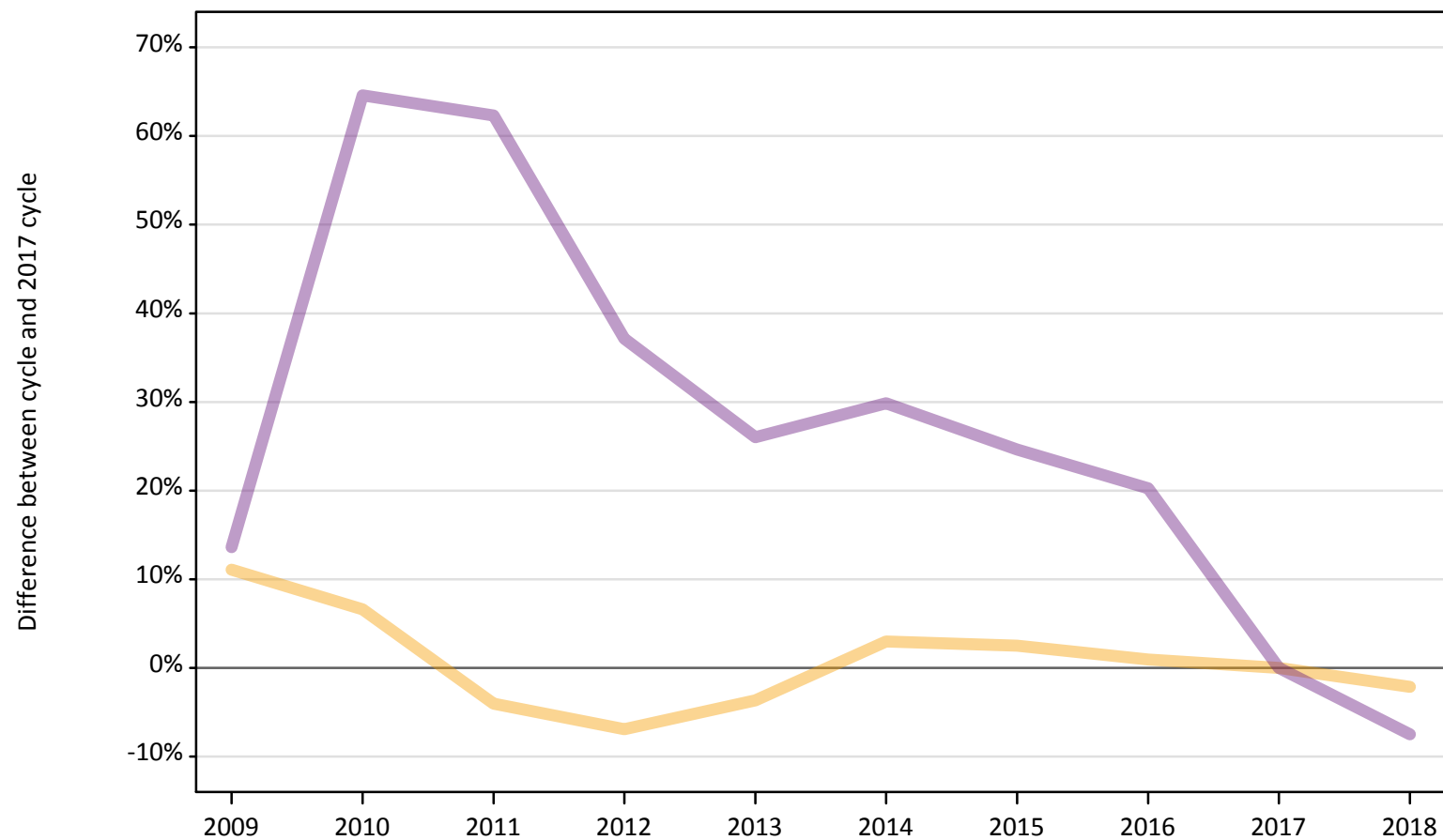
Applicant type	Status	2009	2010	2011	2012	2013	2014	2015	2016	2017	2018
Main scheme	Placed (Adjustment)	-64%	-66%	-48%	29%	17%	10%	9%	-16%	0%	-14%

Note: The percentage change is not recorded in the above table for groups with fewer than 10 placed applicants in that cycle or in the 2017 cycle.

## A.12 Main scheme applicants not currently placed from the UK: 12 days after A level results day

Applicants in unplaced states: difference between cycle and 2017 cycle

— Holding offer  
— Free to be placed in Clearing



Note: The percentage change is not plotted in the above chart for groups with fewer than 30 unplaced applicants in any one cycle.



### A.13 Main scheme applicants not currently placed from the UK: 12 days after A level results day

Applicants in unplaced states: applicants at 12 days after A level results day

Applicant type	Status	2009	2010	2011	2012	2013	2014	2015	2016	2017	2018
Main scheme	Holding offer	27,430	26,320	23,700	22,980	23,780	25,430	25,310	24,920	24,690	24,160
	Free to be placed in Clearing	93,760	135,830	133,940	113,180	104,000	107,160	102,860	99,240	82,530	76,350

### A.14 Main scheme applicants not currently placed from the UK: 12 days after A level results day

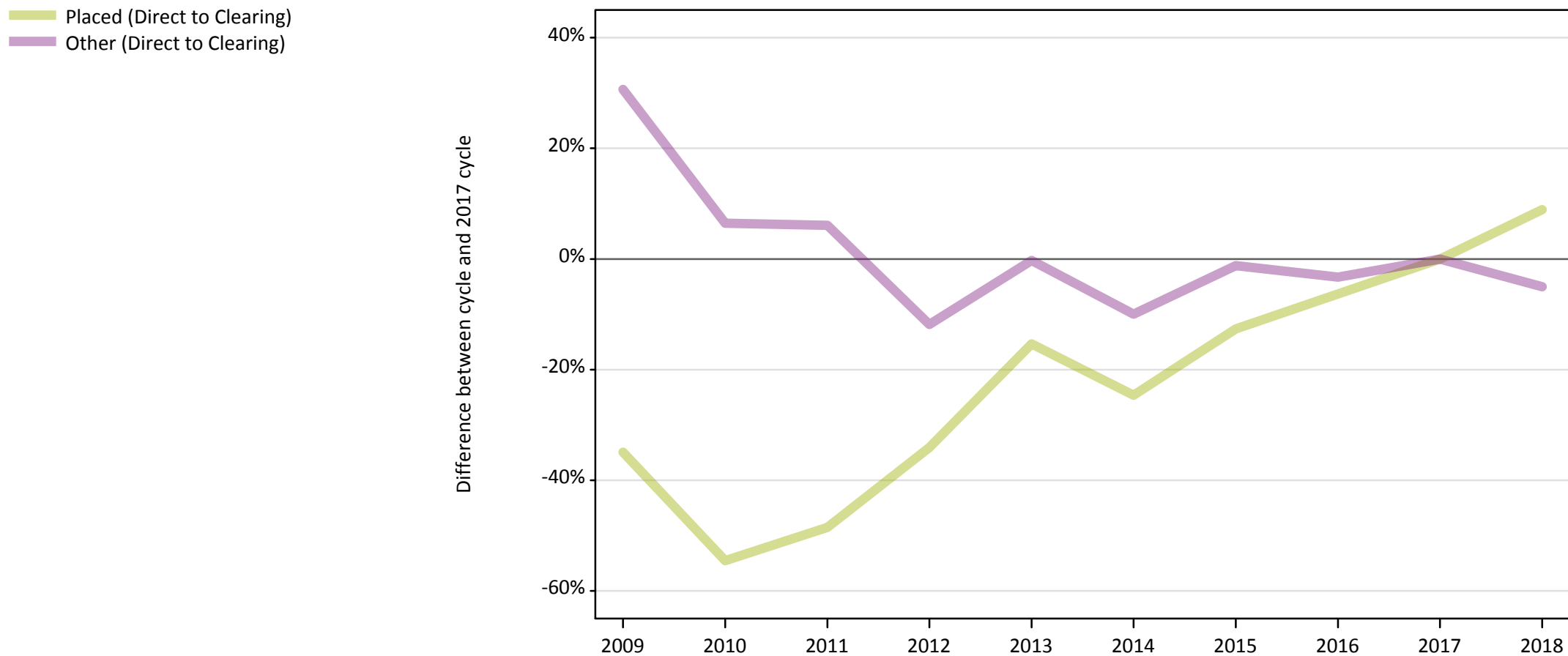
Applicants in unplaced states: difference between cycle and 2017 cycle

Applicant type	Status	2009	2010	2011	2012	2013	2014	2015	2016	2017	2018
Main scheme	Holding offer	11%	7%	-4%	-7%	-4%	3%	3%	1%	0%	-2%
	Free to be placed in Clearing	14%	65%	62%	37%	26%	30%	25%	20%	0%	-7%

Note: The percentage change is not recorded in the above table for groups with fewer than 10 unplaced applicants in that cycle or in the 2017 cycle.

### A.15 Direct to Clearing applicants from the UK: 12 days after A level results day

Direct to Clearing: difference between cycle and 2017 cycle



Note: The percentage change is not plotted in the above chart for groups with fewer than 30 placed applicants in any one cycle.

### A.16 Direct to Clearing applicants from the UK: 12 days after A level results day

Direct to Clearing 12 days after A level results day

Applicant type	Status	2009	2010	2011	2012	2013	2014	2015	2016	2017	2018
Direct to Clearing	Placed (Direct to Clearing)	5,240	3,660	4,140	5,310	6,810	6,060	7,030	7,540	8,050	8,770
	Other (Direct to Clearing)	9,220	7,520	7,490	6,220	7,040	6,360	6,980	6,830	7,060	6,710

### A.17 Direct to Clearing applicants from the UK: 12 days after A level results day

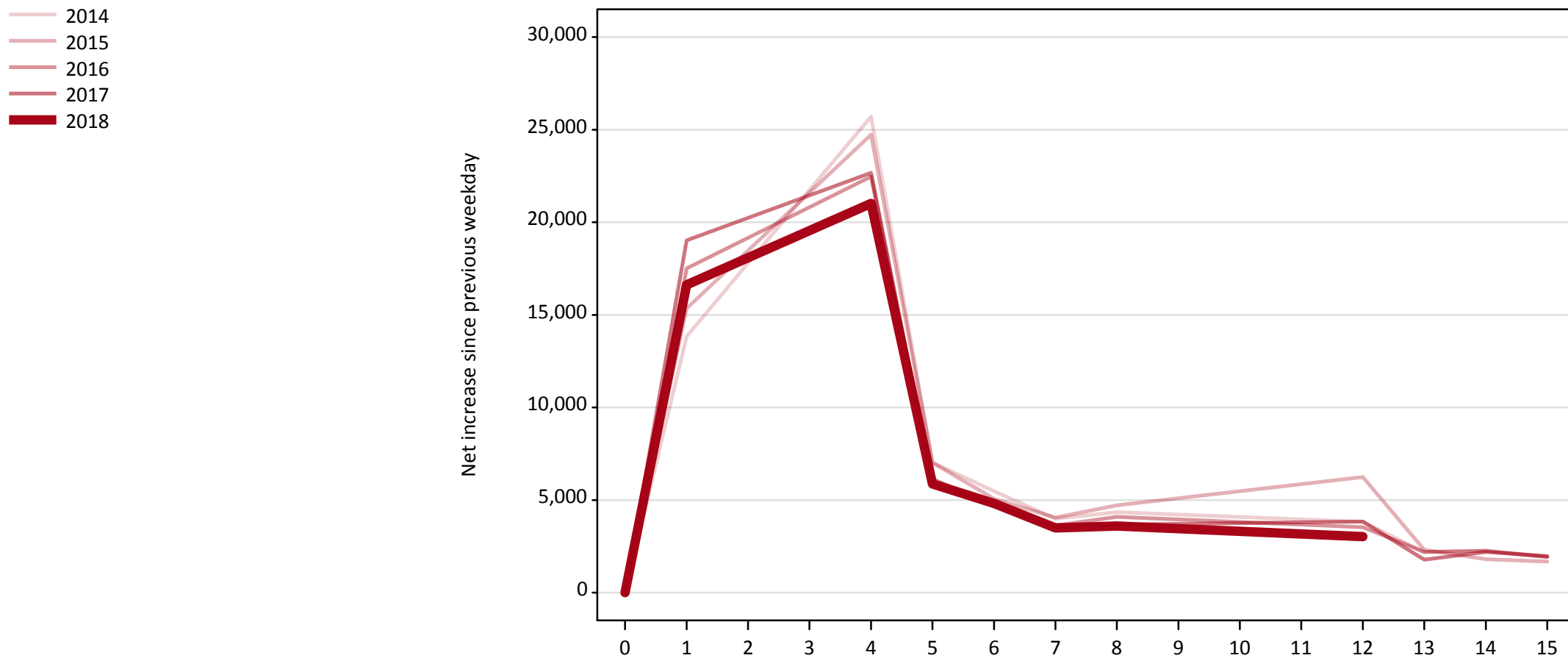
Direct to Clearing: difference between cycle and 2017 cycle

Applicant type	Status	2009	2010	2011	2012	2013	2014	2015	2016	2017	2018
Direct to Clearing	Placed (Direct to Clearing)	-35%	-55%	-49%	-34%	-15%	-25%	-13%	-6%	0%	9%
	Other (Direct to Clearing)	31%	6%	6%	-12%	-0%	-10%	-1%	-3%	0%	-5%

Note: The percentage change is not recorded in the above table for groups with fewer than 10 placed applicants in that cycle or in the 2017 cycle.

### A.18 All Placed: Daily net change (from the UK)

Net increase since previous weekday (2018 cycle up to 12 days after A level results day)

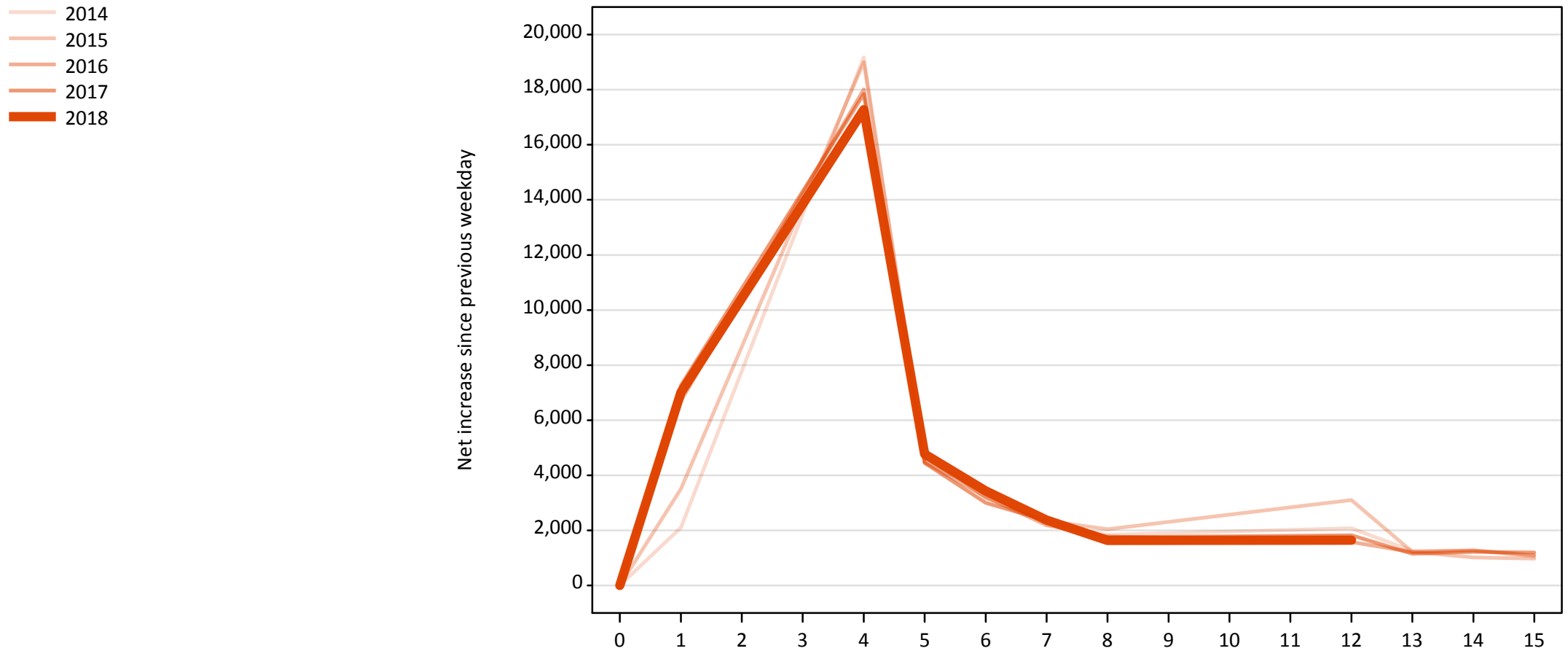


**A.19 All Placed: Daily net change (from the UK)**

Net increase since previous weekday (2018 cycle up to 12 days after A level results day)

Applicant status, days since A level results day		2014	2015	2016	2017	2018
All Placed	0	0	0	0	0	0
	1	13,840	15,350	17,510	19,030	16,620
	4	25,710	24,730	22,470	22,670	21,010
	5	7,020	7,020	6,140	5,840	5,870
	6	5,480	5,070	4,660	4,710	4,810
	7	3,990	4,060	3,630	3,570	3,500
	8	4,350	4,720	4,090	3,670	3,600
	12	3,830	6,240	3,530	3,840	3,020
	13	2,190	2,310	2,200	1,780	
	14	2,280	1,810	2,260	2,200	
	15	1,950	1,680	1,920	1,970	

**A.20 Placed through Clearing only: Daily net change (from the UK)**  
Net increase since previous weekday (2018 cycle up to 12 days after A level results day)

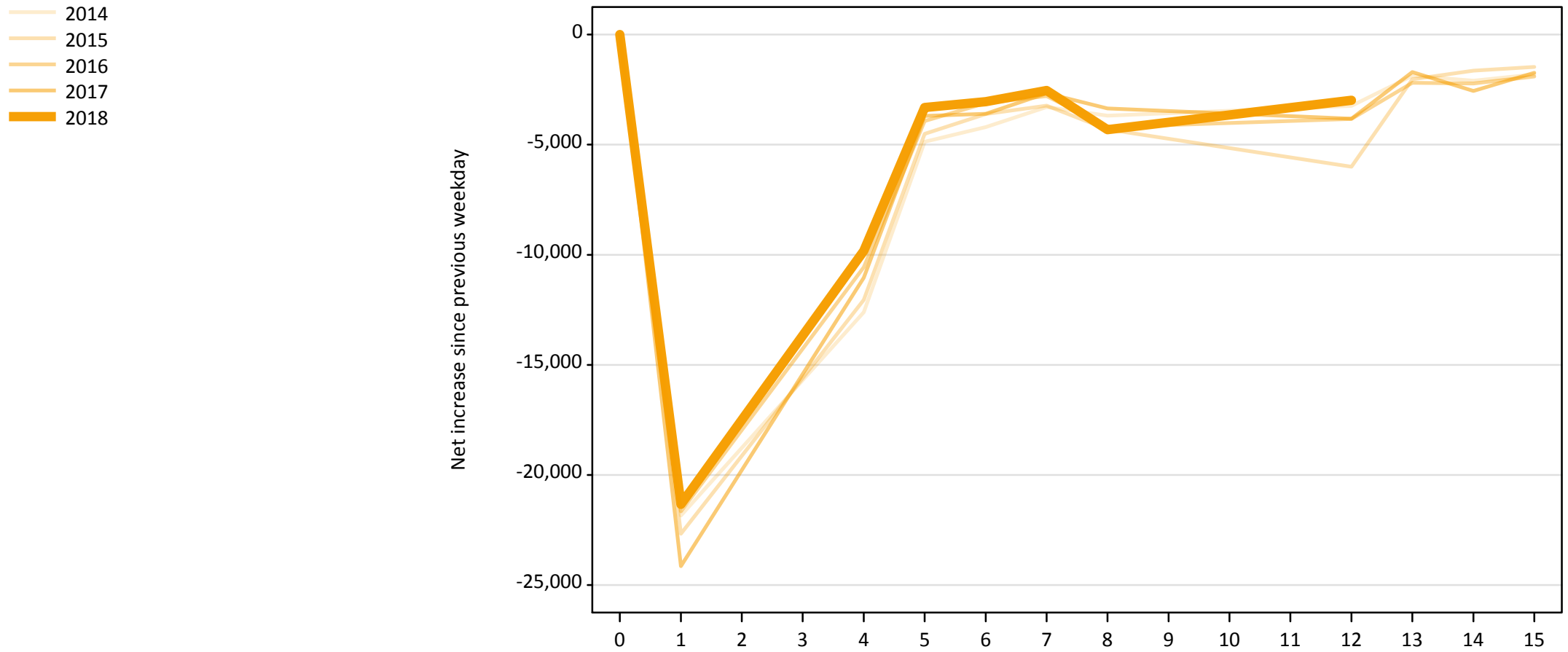


### A.21 Placed through Clearing only: Daily net change (from the UK)

Net increase since previous weekday (2018 cycle up to 12 days after A level results day)

Applicant status, days since A level results day		2014	2015	2016	2017	2018
Placed through Clearing only	0	0	0	0	0	0
	1	2,100	3,510	6,700	7,260	7,010
	4	19,170	19,000	18,010	17,840	17,270
	5	4,480	4,820	4,470	4,450	4,770
	6	3,420	3,170	3,220	3,000	3,430
	7	2,270	2,350	2,180	2,360	2,370
	8	1,840	2,040	1,780	1,740	1,640
	12	2,070	3,100	1,570	1,820	1,640
	13	1,250	1,220	1,210	1,150	
	14	1,270	1,020	1,270	1,220	
	15	1,050	980	1,090	1,200	

**A.22 Holding Offer: Daily net change (from the UK)**  
Net increase since previous weekday (2018 cycle up to 12 days after A level results day)





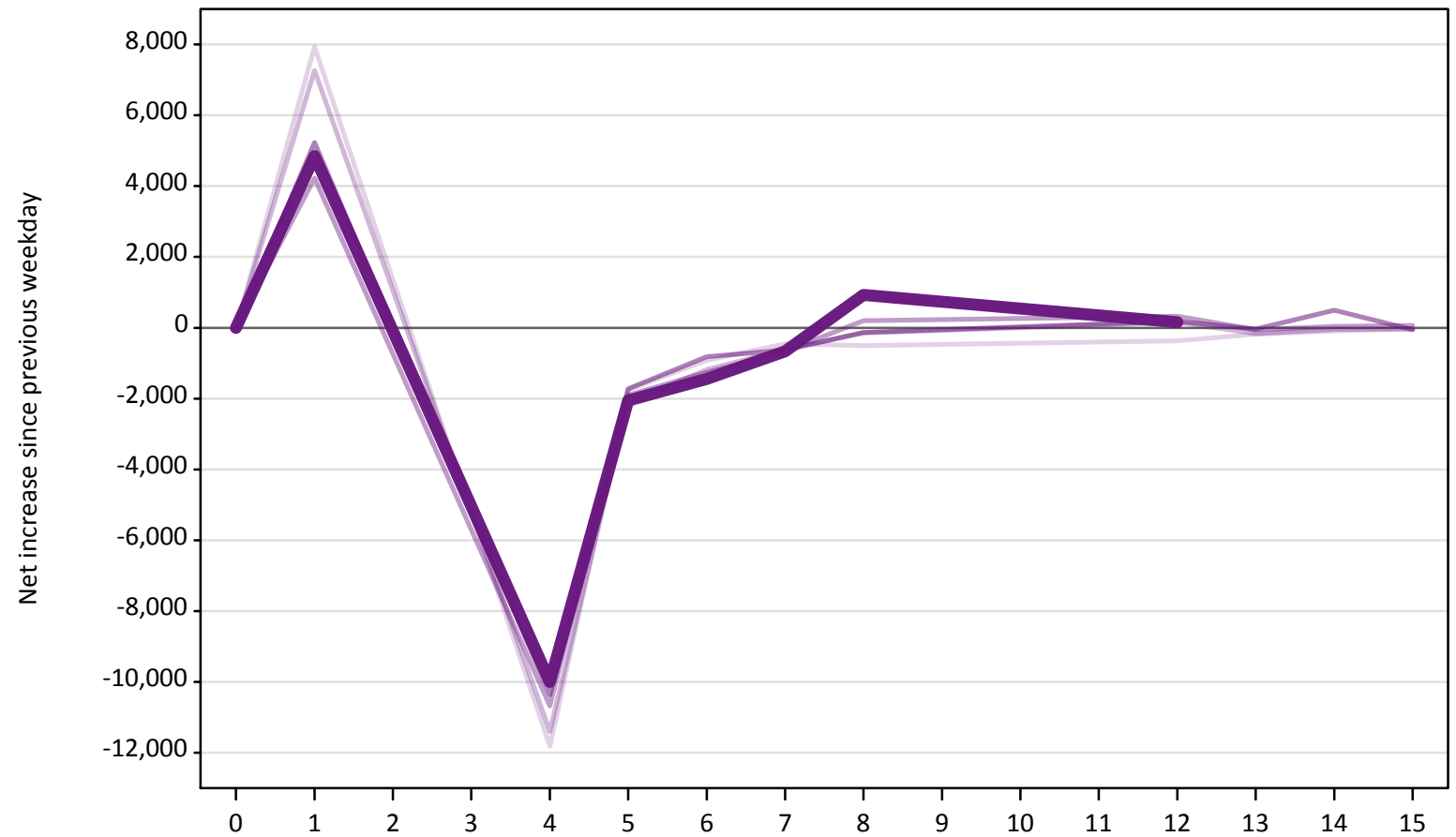
### A.23 Holding Offer: Daily net change (from the UK)

Net increase since previous weekday (2018 cycle up to 12 days after A level results day)

Applicant status, days since A level results day	2014	2015	2016	2017	2018	
Holding Offer	0	0	0	0	0	
	1	-21,840	-22,670	-21,650	-24,140	-21,330
	4	-12,610	-12,050	-10,570	-11,040	-9,830
	5	-4,870	-4,510	-3,920	-3,690	-3,320
	6	-4,210	-3,610	-3,110	-3,600	-3,040
	7	-3,290	-3,230	-2,790	-2,670	-2,540
	8	-3,690	-4,310	-4,200	-3,360	-4,320
	12	-3,240	-6,000	-3,830	-3,830	-2,980
	13	-1,870	-2,030	-2,190	-1,700	
	14	-2,100	-1,640	-2,220	-2,560	
	15	-1,810	-1,470	-1,900	-1,740	

**A.24 Free to be placed in Clearing: Daily net change (from the UK)**  
Net increase since previous weekday (2018 cycle up to 12 days after A level results day)

- 2014
- 2015
- 2016
- 2017
- 2018



**A.25 Free to be placed in Clearing: Daily net change (from the UK)**

Net increase since previous weekday (2018 cycle up to 12 days after A level results day)

Applicant status, days since A level results day		2014	2015	2016	2017	2018
Free to be placed in Clearing	0	0	0	0	0	0
	1	7,940	7,260	4,220	5,230	4,850
	4	-11,810	-11,400	-10,680	-10,370	-10,000
	5	-1,750	-2,100	-1,900	-1,730	-2,050
	6	-920	-1,180	-1,260	-820	-1,450
	7	-450	-610	-660	-630	-660
	8	-510	-150	200	-130	920
	12	-370	150	320	190	160
	13	-180	-170	-50	-40	
	14	-90	-50	40	500	
	15	-30	-40	60	-50	