

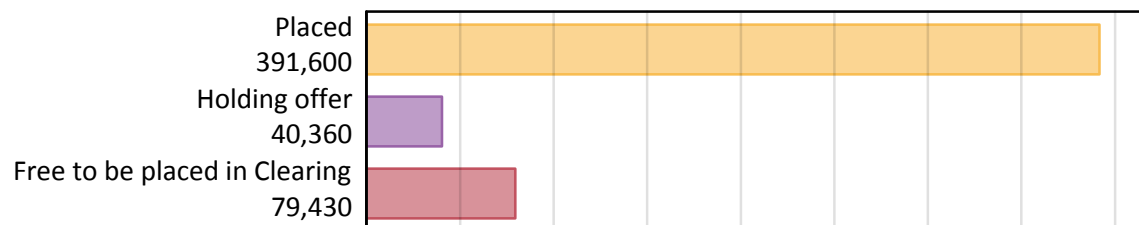
Daily Clearing Analysis: Overview

Analysis at 00:05 on Monday 20 August 2018 (4 days after A level results day)

A.1 Applicants by type and status from the UK, 2018 cycle

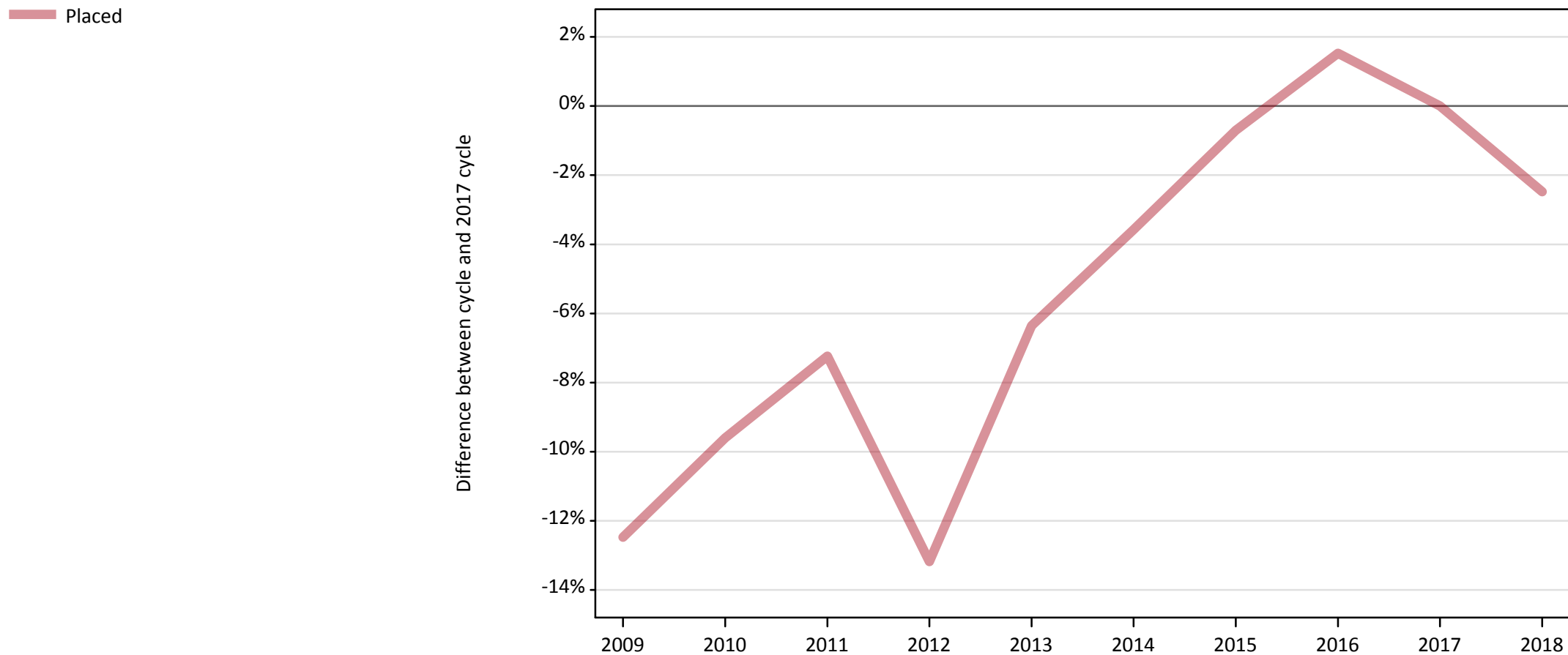
Applicant type	Status	2018
Main scheme	Placed (Clearing)	24,680
	Placed (Adjustment)	680
	Placed (Firm)	323,560
	Placed (Insurance)	26,990
	Placed (Other)	10,160
	Holding offer	40,360
	Free to be placed in Clearing	79,430
Direct to Clearing	Placed (Direct to Clearing)	5,540
	Other (Direct to Clearing)	7,220
All applicants	Placed	391,600

A.2 Summary of applicants who are placed, holding offers or free to be placed in Clearing (the UK)



A.3 All placed applicants from the UK: 4 days after A level results day

All placed applicants: difference between cycle and 2017 cycle



Note: The percentage change is not plotted in the above chart for groups with fewer than 30 placed applicants in any one cycle.

A.4 All placed applicants from the UK: 4 days after A level results day

All placed applicants: applicants at 4 days after A level results day

Applicant type	Status	2009	2010	2011	2012	2013	2014	2015	2016	2017	2018
All applicants	Placed	351,470	363,020	372,490	348,630	376,040	387,200	398,750	407,700	401,560	391,600

A.5 All placed applicants from the UK: 4 days after A level results day

All placed applicants: difference between cycle and 2017 cycle

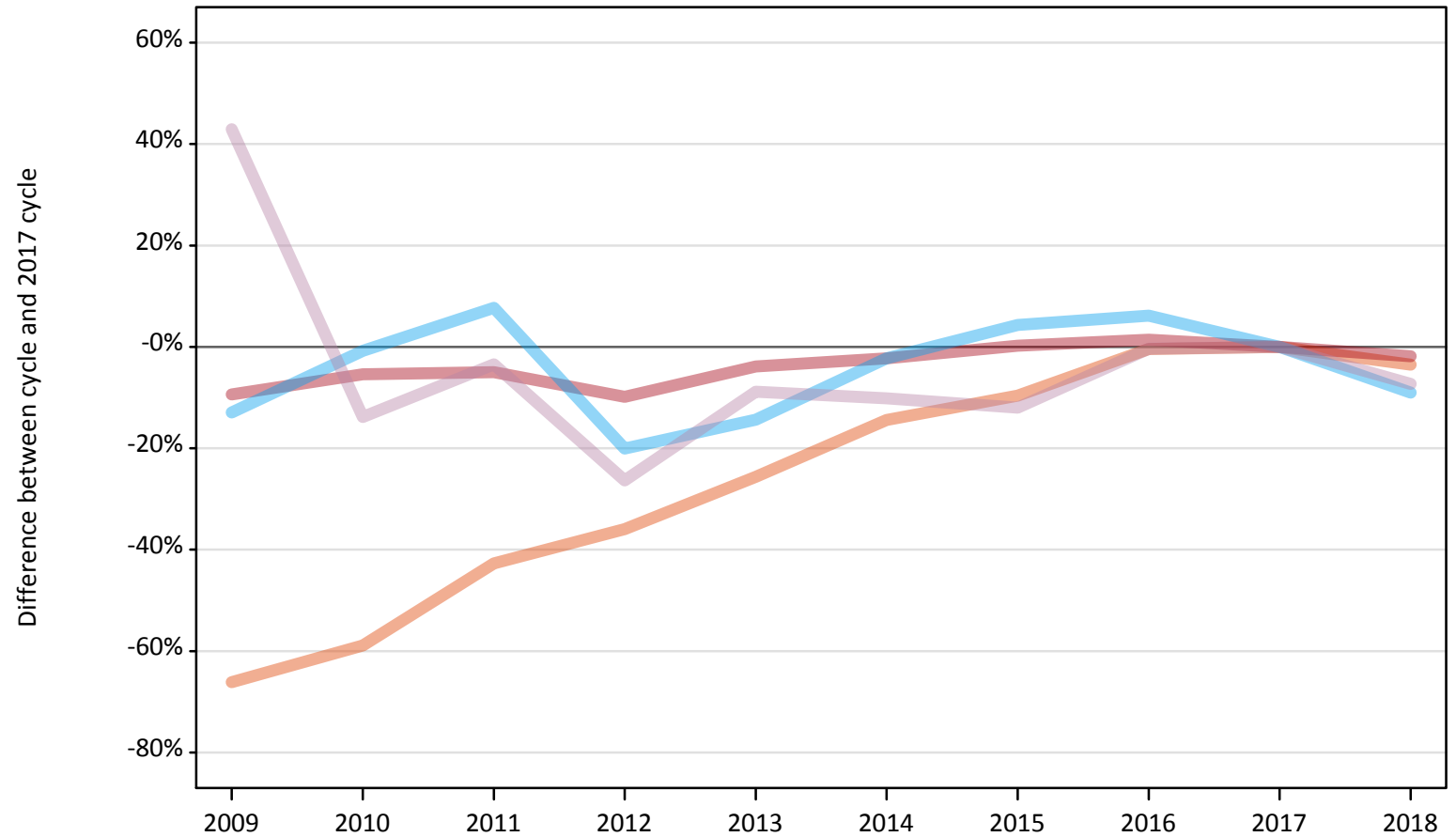
Applicant type	Status	2009	2010	2011	2012	2013	2014	2015	2016	2017	2018
All applicants	Placed	-12%	-10%	-7%	-13%	-6%	-4%	-1%	2%	0%	-2%

Note: The percentage change is not recorded in the above table for groups with fewer than 10 placed applicants in that cycle or in the 2017 cycle.

A.6 Placed main scheme applicants from the UK: 4 days after A level results day

All Main scheme placed routes (excluding Adjustment): difference between cycle and 2017 cycle

- Placed (Clearing)
- Placed (Firm)
- Placed (Insurance)
- Placed (Other)



Note: The percentage change is not plotted in the above chart for groups with fewer than 30 placed applicants in any one cycle.

A.7 Placed main scheme applicants from the UK: 4 days after A level results day

All Main scheme placed routes (excluding Adjustment): applicants at 4 days after A level results day

Applicant type	Status	2009	2010	2011	2012	2013	2014	2015	2016	2017	2018
Main scheme	Placed (Clearing)	8,670	10,510	14,660	16,380	19,030	21,890	23,120	25,480	25,580	24,680
	Placed (Firm)	298,780	311,780	313,140	297,110	316,960	322,300	330,400	334,280	329,660	323,560
	Placed (Insurance)	25,830	29,430	31,950	23,710	25,400	28,980	30,940	31,500	29,660	26,990
	Placed (Other)	15,670	9,450	10,590	8,080	10,000	9,860	9,650	10,920	10,960	10,160

A.8 Placed main scheme applicants from the UK: 4 days after A level results day

All Main scheme placed routes (excluding Adjustment): difference between cycle and 2017 cycle

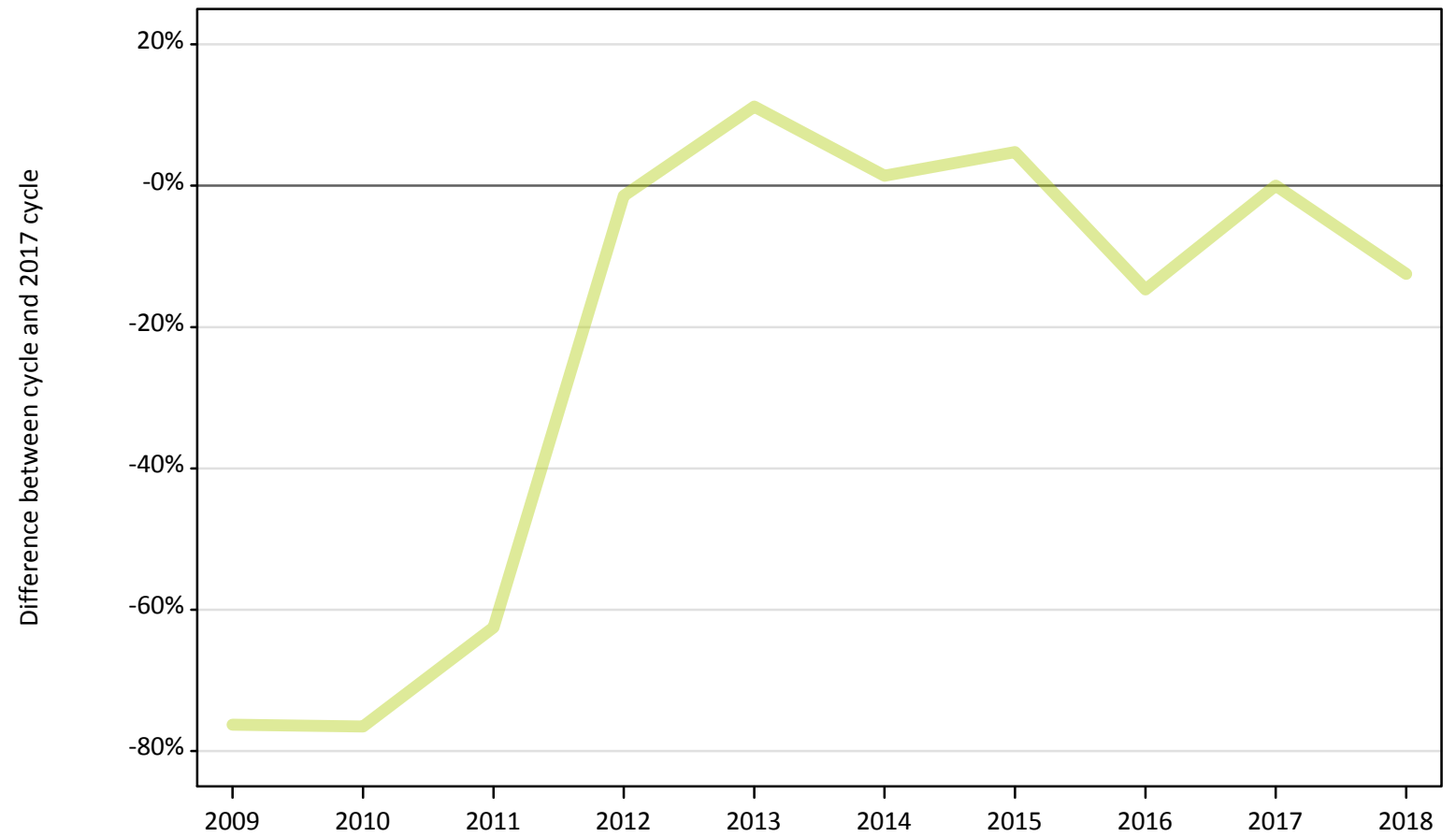
Applicant type	Status	2009	2010	2011	2012	2013	2014	2015	2016	2017	2018
Main scheme	Placed (Clearing)	-66%	-59%	-43%	-36%	-26%	-14%	-10%	-0%	0%	-4%
	Placed (Firm)	-9%	-5%	-5%	-10%	-4%	-2%	0%	1%	0%	-2%
	Placed (Insurance)	-13%	-1%	8%	-20%	-14%	-2%	4%	6%	0%	-9%
	Placed (Other)	43%	-14%	-3%	-26%	-9%	-10%	-12%	-0%	0%	-7%

Note: The percentage change is not recorded in the above table for groups with fewer than 10 placed applicants in that cycle or in the 2017 cycle.

A.9 Main scheme applicants placed through adjustment: 4 days after A level results day

Placed through adjustment: difference between cycle and 2017 cycle

Placed (Adjustment)



Note: The percentage change is not plotted in the above chart for groups with fewer than 30 placed applicants in any one cycle.

A.10 Main scheme applicants placed through adjustment: 4 days after A level results day

Placed through adjustment: applicants at 4 days after A level results day

Applicant type	Status	2009	2010	2011	2012	2013	2014	2015	2016	2017	2018
Main scheme	Placed (Adjustment)	180	180	290	770	860	790	810	660	780	680

A.11 Main scheme applicants placed through adjustment: 4 days after A level results day

Placed through adjustment: difference between cycle and 2017 cycle

Applicant type	Status	2009	2010	2011	2012	2013	2014	2015	2016	2017	2018
Main scheme	Placed (Adjustment)	-76%	-77%	-63%	-1%	11%	1%	5%	-15%	0%	-13%

Note: The percentage change is not recorded in the above table for groups with fewer than 10 placed applicants in that cycle or in the 2017 cycle.

A.12 Main scheme applicants not currently placed from the UK: 4 days after A level results day

Applicants in unplaced states: difference between cycle and 2017 cycle

— Holding offer
— Free to be placed in Clearing



Note: The percentage change is not plotted in the above chart for groups with fewer than 30 unplaced applicants in any one cycle.

A.13 Main scheme applicants not currently placed from the UK: 4 days after A level results day

Applicants in unplaced states: applicants at 4 days after A level results day

Applicant type	Status	2009	2010	2011	2012	2013	2014	2015	2016	2017	2018
Main scheme	Holding offer	49,520	49,250	44,480	43,320	42,080	44,720	46,960	42,770	41,820	40,360
	Free to be placed in Clearing	100,580	142,300	143,190	117,730	107,000	111,150	106,740	102,530	85,650	79,430

A.14 Main scheme applicants not currently placed from the UK: 4 days after A level results day

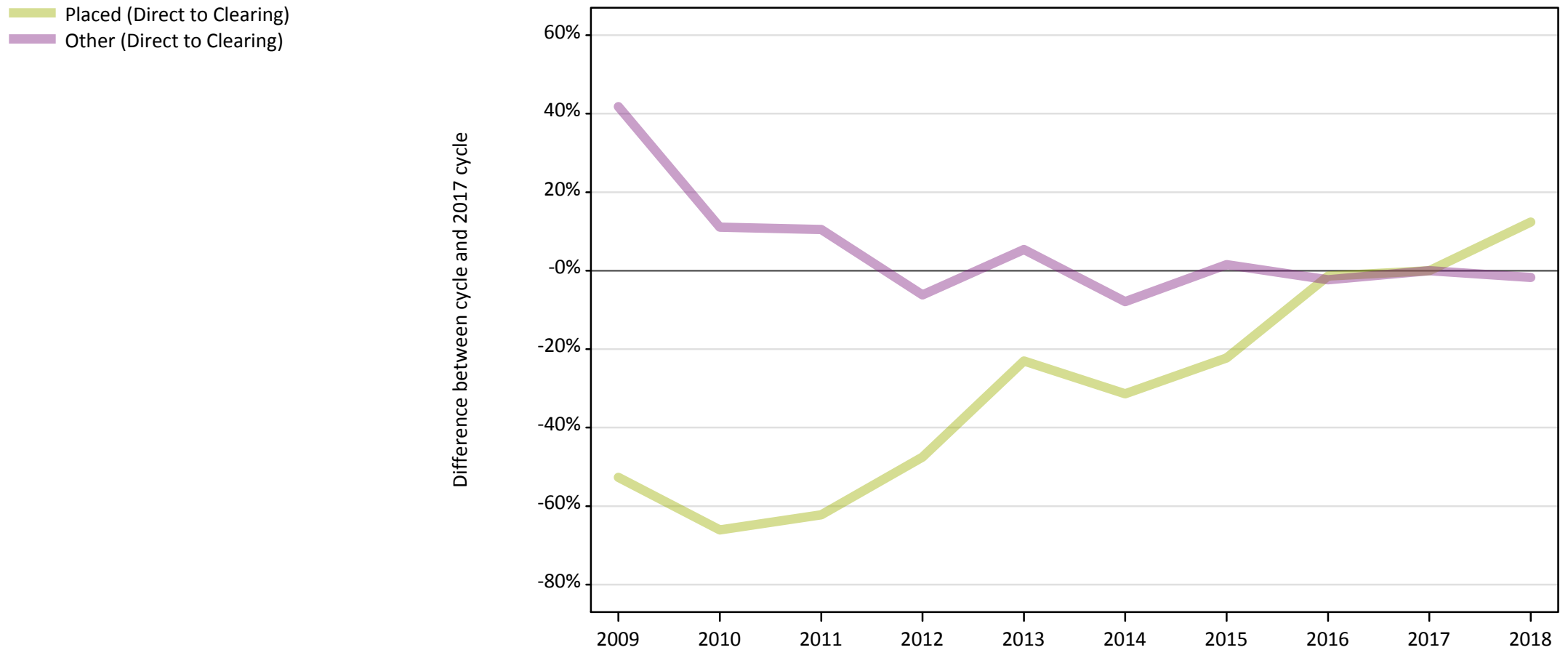
Applicants in unplaced states: difference between cycle and 2017 cycle

Applicant type	Status	2009	2010	2011	2012	2013	2014	2015	2016	2017	2018
Main scheme	Holding offer	18%	18%	6%	4%	1%	7%	12%	2%	0%	-3%
	Free to be placed in Clearing	17%	66%	67%	37%	25%	30%	25%	20%	0%	-7%

Note: The percentage change is not recorded in the above table for groups with fewer than 10 unplaced applicants in that cycle or in the 2017 cycle.

A.15 Direct to Clearing applicants from the UK: 4 days after A level results day

Direct to Clearing: difference between cycle and 2017 cycle



Note: The percentage change is not plotted in the above chart for groups with fewer than 30 placed applicants in any one cycle.

A.16 Direct to Clearing applicants from the UK: 4 days after A level results day

Direct to Clearing 4 days after A level results day

Applicant type	Status	2009	2010	2011	2012	2013	2014	2015	2016	2017	2018
Direct to Clearing	Placed (Direct to Clearing)	2,330	1,670	1,860	2,580	3,790	3,380	3,830	4,860	4,920	5,540
	Other (Direct to Clearing)	10,420	8,170	8,120	6,900	7,750	6,770	7,460	7,180	7,350	7,220

A.17 Direct to Clearing applicants from the UK: 4 days after A level results day

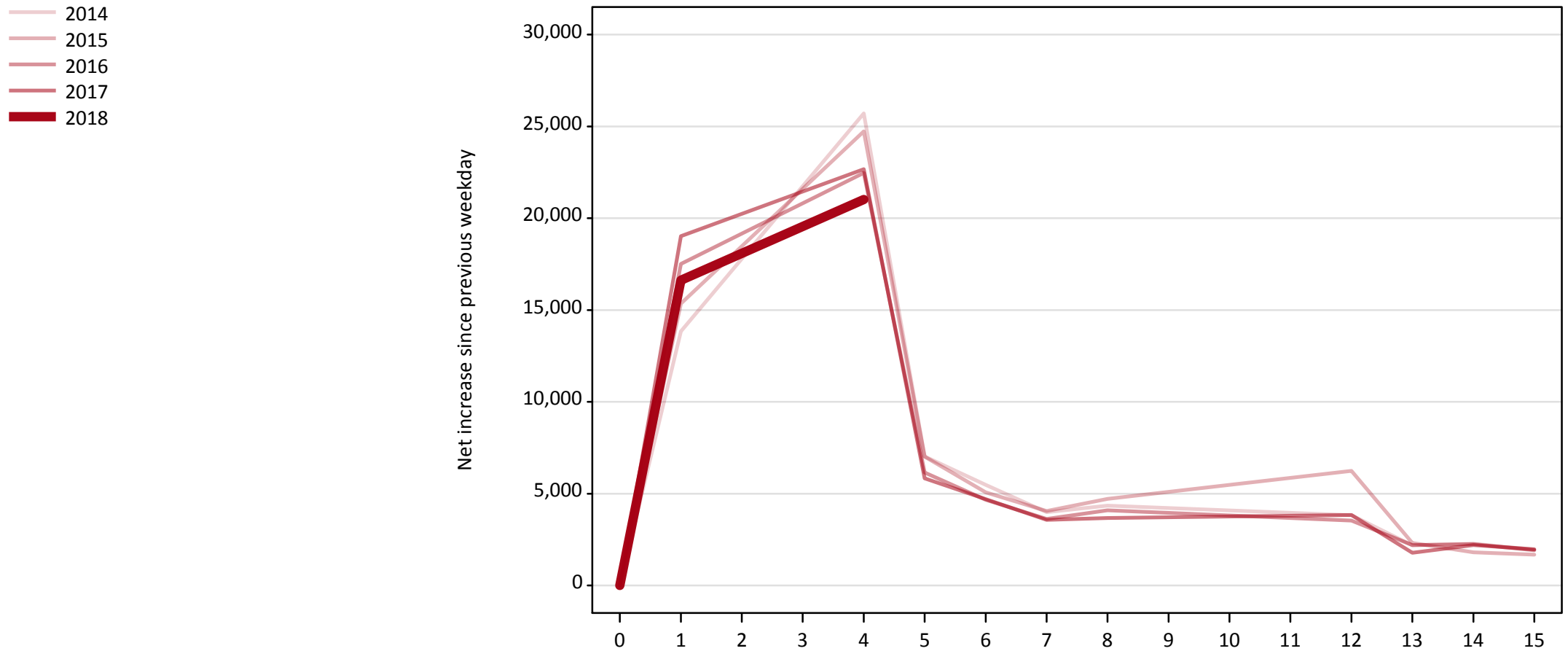
Direct to Clearing: difference between cycle and 2017 cycle

Applicant type	Status	2009	2010	2011	2012	2013	2014	2015	2016	2017	2018
Direct to Clearing	Placed (Direct to Clearing)	-53%	-66%	-62%	-48%	-23%	-31%	-22%	-1%	0%	12%
	Other (Direct to Clearing)	42%	11%	11%	-6%	5%	-8%	2%	-2%	0%	-2%

Note: The percentage change is not recorded in the above table for groups with fewer than 10 placed applicants in that cycle or in the 2017 cycle.

A.18 All Placed: Daily net change (from the UK)

Net increase since previous weekday (2018 cycle up to 4 days after A level results day)

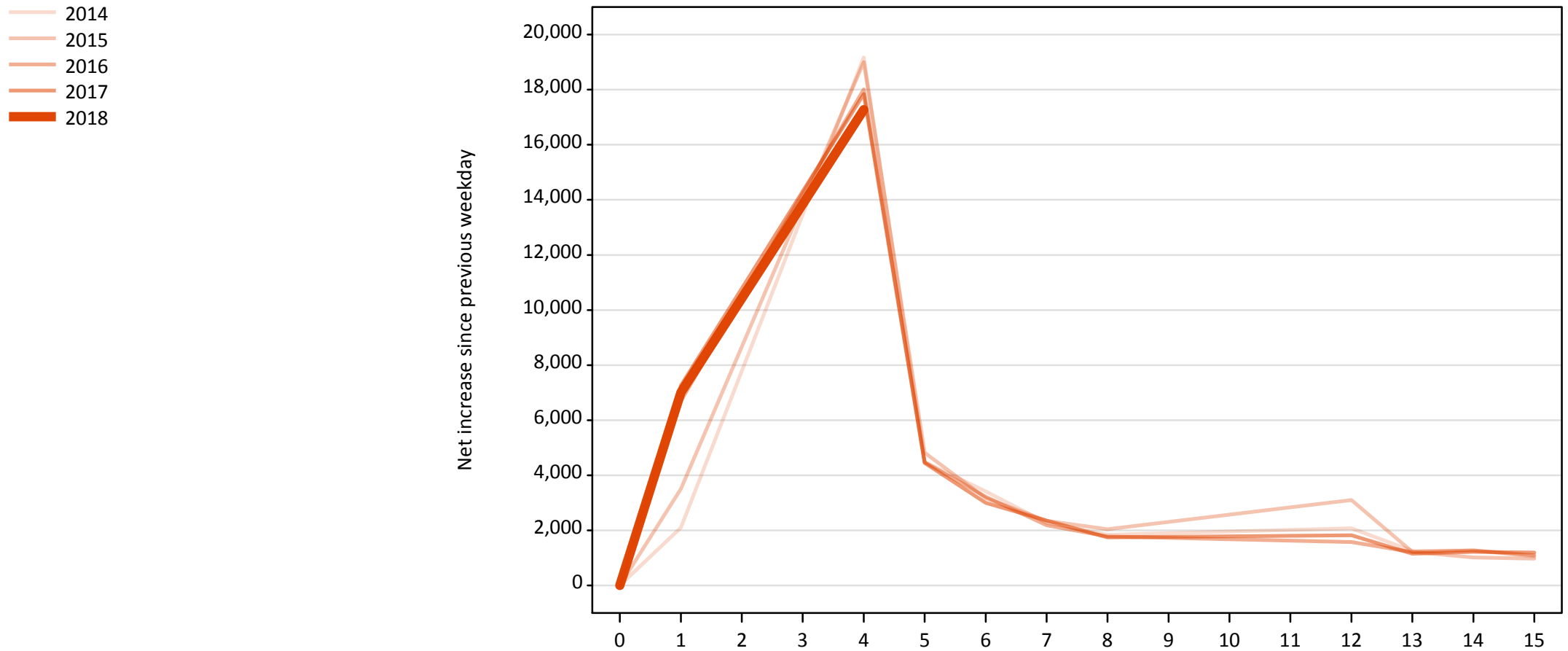


A.19 All Placed: Daily net change (from the UK)

Net increase since previous weekday (2018 cycle up to 4 days after A level results day)

Applicant status, days since A level results day	2014	2015	2016	2017	2018	
All Placed	0	0	0	0	0	
	1	13,840	15,350	17,510	19,030	16,620
	4	25,710	24,730	22,470	22,670	21,010
	5	7,020	7,020	6,140	5,840	
	6	5,480	5,070	4,660	4,710	
	7	3,990	4,060	3,630	3,570	
	8	4,350	4,720	4,090	3,670	
	12	3,830	6,240	3,530	3,840	
	13	2,190	2,310	2,200	1,780	
	14	2,280	1,810	2,260	2,200	
	15	1,950	1,680	1,920	1,970	

A.20 Placed through Clearing only: Daily net change (from the UK)
Net increase since previous weekday (2018 cycle up to 4 days after A level results day)

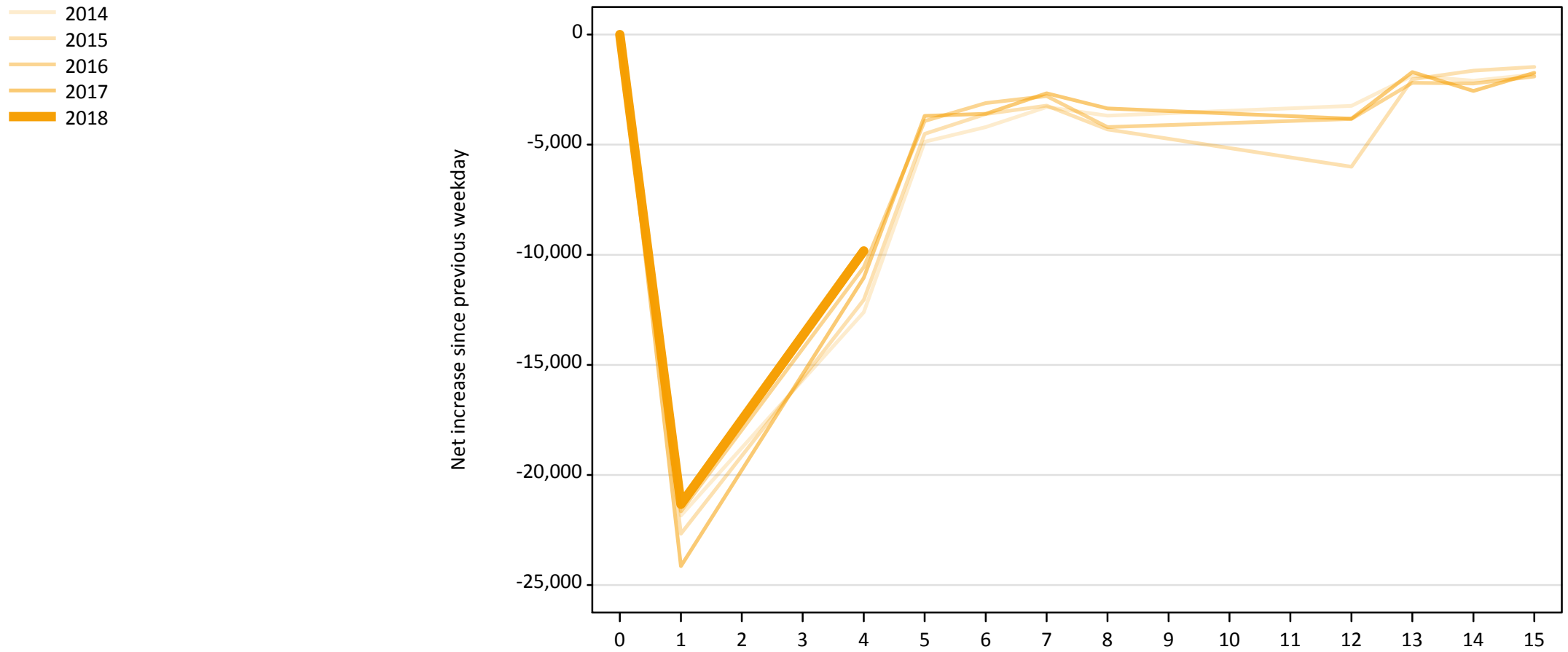


A.21 Placed through Clearing only: Daily net change (from the UK)

Net increase since previous weekday (2018 cycle up to 4 days after A level results day)

Applicant status, days since A level results day		2014	2015	2016	2017	2018
Placed through Clearing only	0	0	0	0	0	0
	1	2,100	3,510	6,700	7,260	7,010
	4	19,170	19,000	18,010	17,840	17,270
	5	4,480	4,820	4,470	4,450	
	6	3,420	3,170	3,220	3,000	
	7	2,270	2,350	2,180	2,360	
	8	1,840	2,040	1,780	1,740	
	12	2,070	3,100	1,570	1,820	
	13	1,250	1,220	1,210	1,150	
	14	1,270	1,020	1,270	1,220	
	15	1,050	980	1,090	1,200	

A.22 Holding Offer: Daily net change (from the UK)
Net increase since previous weekday (2018 cycle up to 4 days after A level results day)

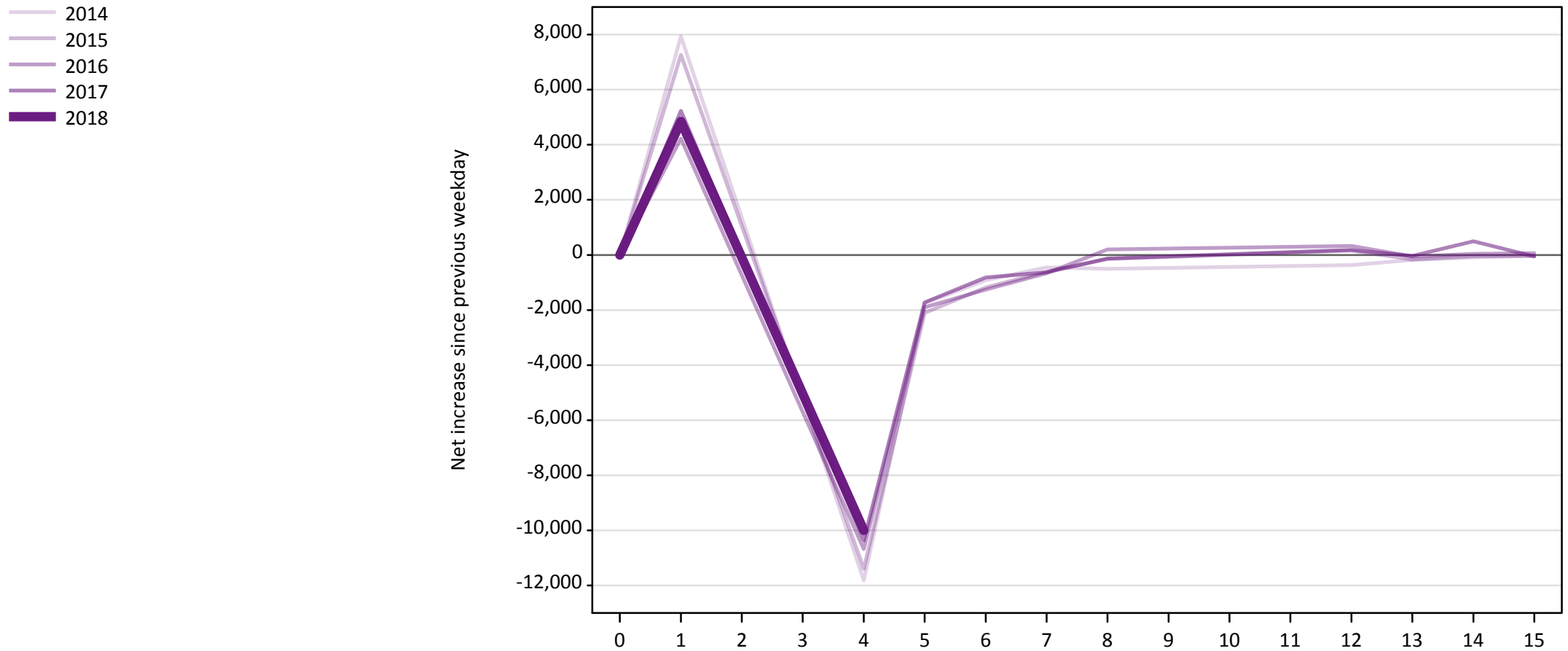


A.23 Holding Offer: Daily net change (from the UK)

Net increase since previous weekday (2018 cycle up to 4 days after A level results day)

Applicant status, days since A level results day	2014	2015	2016	2017	2018	
Holding Offer	0	0	0	0	0	
	1	-21,840	-22,670	-21,650	-24,140	-21,330
	4	-12,610	-12,050	-10,570	-11,040	-9,830
	5	-4,870	-4,510	-3,920	-3,690	
	6	-4,210	-3,610	-3,110	-3,600	
	7	-3,290	-3,230	-2,790	-2,670	
	8	-3,690	-4,310	-4,200	-3,360	
	12	-3,240	-6,000	-3,830	-3,830	
	13	-1,870	-2,030	-2,190	-1,700	
	14	-2,100	-1,640	-2,220	-2,560	
	15	-1,810	-1,470	-1,900	-1,740	

A.24 Free to be placed in Clearing: Daily net change (from the UK)
Net increase since previous weekday (2018 cycle up to 4 days after A level results day)



A.25 Free to be placed in Clearing: Daily net change (from the UK)

Net increase since previous weekday (2018 cycle up to 4 days after A level results day)

Applicant status, days since A level results day		2014	2015	2016	2017	2018
Free to be placed in Clearing	0	0	0	0	0	0
	1	7,940	7,260	4,220	5,230	4,850
	4	-11,810	-11,400	-10,680	-10,370	-10,000
	5	-1,750	-2,100	-1,900	-1,730	
	6	-920	-1,180	-1,260	-820	
	7	-450	-610	-660	-630	
	8	-510	-150	200	-130	
	12	-370	150	320	190	
	13	-180	-170	-50	-40	
	14	-90	-50	40	500	
	15	-30	-40	60	-50	