

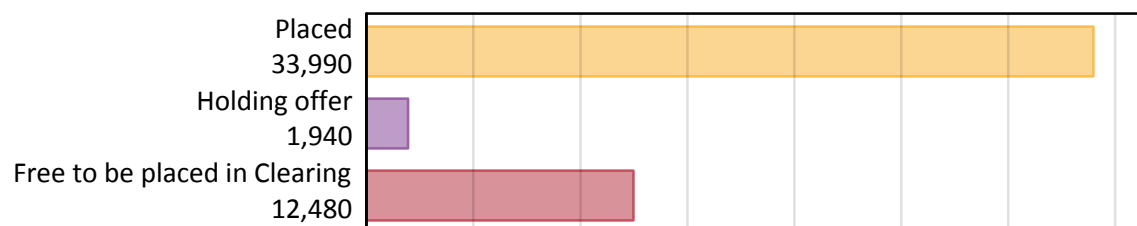
# Daily Clearing Analysis: Overview

Analysis at 00:05 on Wednesday 22 August 2018 (6 days after A level results day)

## A.1 Applicants by type and status from Scotland, 2018 cycle

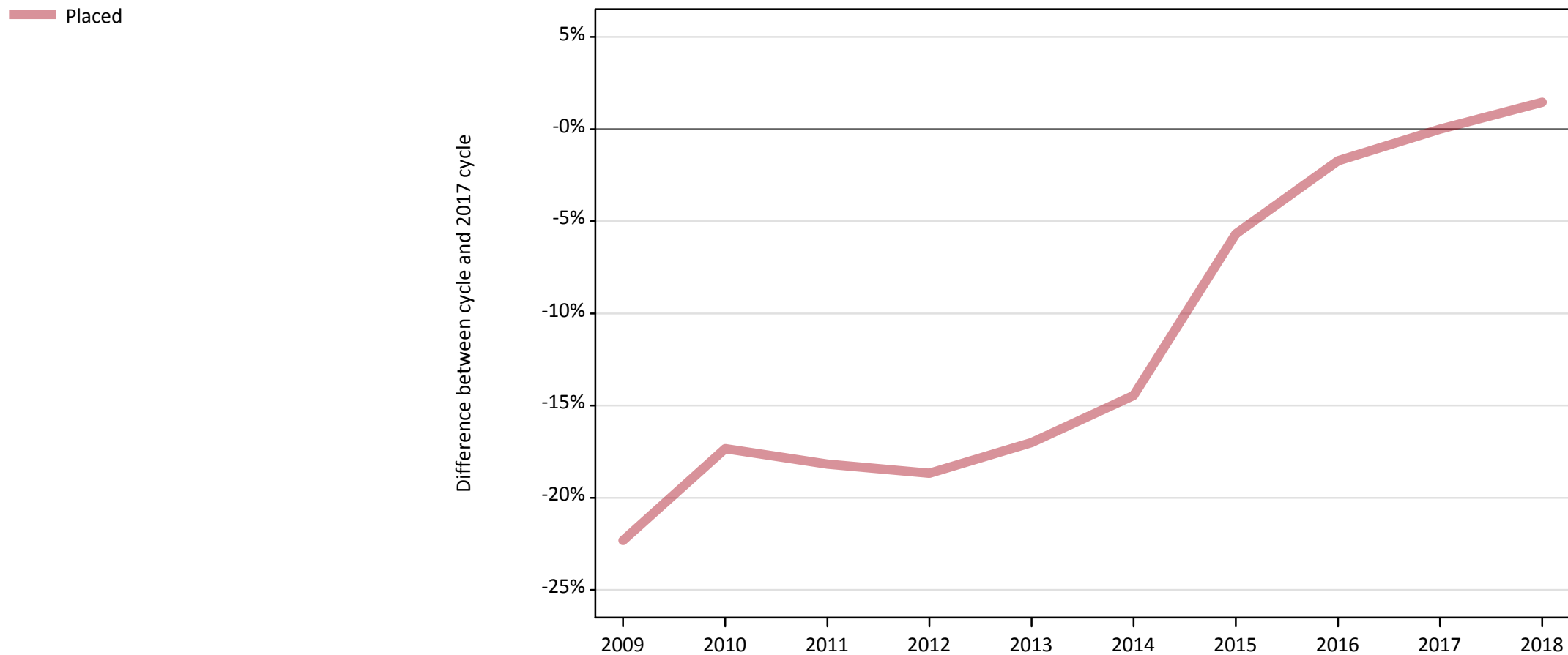
| Applicant type     | Status                        | 2018   |
|--------------------|-------------------------------|--------|
| Main scheme        | Placed (Clearing)             | 900    |
|                    | Placed (Adjustment)           | 10     |
|                    | Placed (Firm)                 | 30,860 |
|                    | Placed (Insurance)            | 1,300  |
|                    | Placed (Other)                | 640    |
|                    | Holding offer                 | 1,940  |
|                    | Free to be placed in Clearing | 12,480 |
| Direct to Clearing | Placed (Direct to Clearing)   | 280    |
|                    | Other (Direct to Clearing)    | 350    |
| All applicants     | Placed                        | 33,990 |

## A.2 Summary of applicants who are placed, holding offers or free to be placed in Clearing ( Scotland )



### A.3 All placed applicants from Scotland: 6 days after A level results day

All placed applicants: difference between cycle and 2017 cycle



Note: The percentage change is not plotted in the above chart for groups with fewer than 30 placed applicants in any one cycle.

#### A.4 All placed applicants from Scotland: 6 days after A level results day

All placed applicants: applicants at 6 days after A level results day

| Applicant type | Status | 2009   | 2010   | 2011   | 2012   | 2013   | 2014   | 2015   | 2016   | 2017   | 2018   |
|----------------|--------|--------|--------|--------|--------|--------|--------|--------|--------|--------|--------|
| All applicants | Placed | 26,030 | 27,690 | 27,410 | 27,250 | 27,800 | 28,660 | 31,600 | 32,920 | 33,500 | 33,990 |

#### A.5 All placed applicants from Scotland: 6 days after A level results day

All placed applicants: difference between cycle and 2017 cycle

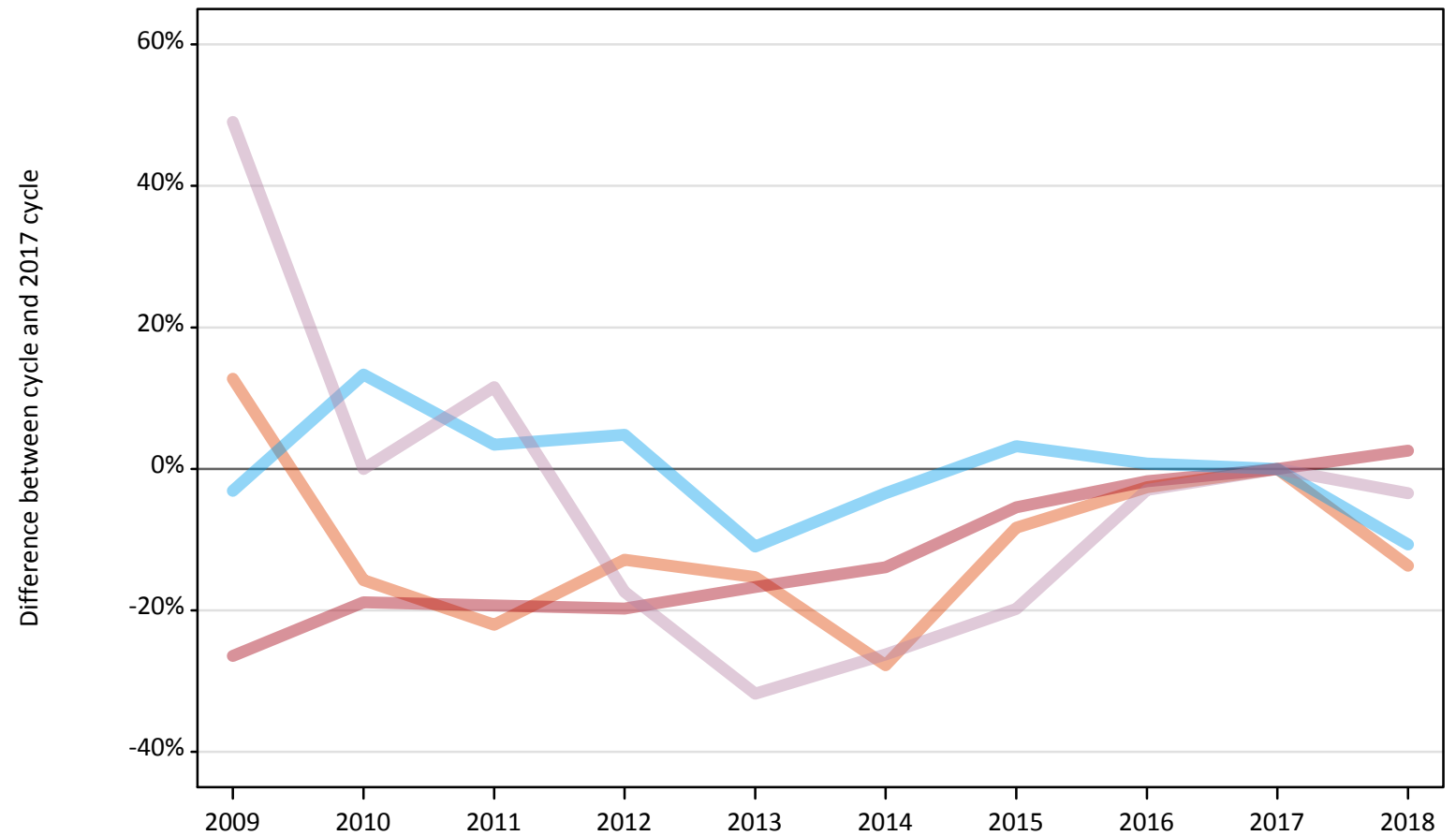
| Applicant type | Status | 2009 | 2010 | 2011 | 2012 | 2013 | 2014 | 2015 | 2016 | 2017 | 2018 |
|----------------|--------|------|------|------|------|------|------|------|------|------|------|
| All applicants | Placed | -22% | -17% | -18% | -19% | -17% | -14% | -6%  | -2%  | 0%   | 1%   |

Note: The percentage change is not recorded in the above table for groups with fewer than 10 placed applicants in that cycle or in the 2017 cycle.

## A.6 Placed main scheme applicants from Scotland: 6 days after A level results day

All Main scheme placed routes (excluding Adjustment): difference between cycle and 2017 cycle

- Placed (Clearing)
- Placed (Firm)
- Placed (Insurance)
- Placed (Other)



Note: The percentage change is not plotted in the above chart for groups with fewer than 30 placed applicants in any one cycle.

### A.7 Placed main scheme applicants from Scotland: 6 days after A level results day

All Main scheme placed routes (excluding Adjustment): applicants at 6 days after A level results day

| Applicant type | Status             | 2009   | 2010   | 2011   | 2012   | 2013   | 2014   | 2015   | 2016   | 2017   | 2018   |
|----------------|--------------------|--------|--------|--------|--------|--------|--------|--------|--------|--------|--------|
| Main scheme    | Placed (Clearing)  | 1,180  | 880    | 810    | 910    | 880    | 750    | 960    | 1,020  | 1,040  | 900    |
|                | Placed (Firm)      | 22,120 | 24,400 | 24,260 | 24,140 | 25,060 | 25,910 | 28,450 | 29,550 | 30,080 | 30,860 |
|                | Placed (Insurance) | 1,410  | 1,650  | 1,510  | 1,530  | 1,300  | 1,410  | 1,500  | 1,470  | 1,460  | 1,300  |
|                | Placed (Other)     | 990    | 670    | 740    | 550    | 460    | 490    | 540    | 650    | 670    | 640    |

### A.8 Placed main scheme applicants from Scotland: 6 days after A level results day

All Main scheme placed routes (excluding Adjustment): difference between cycle and 2017 cycle

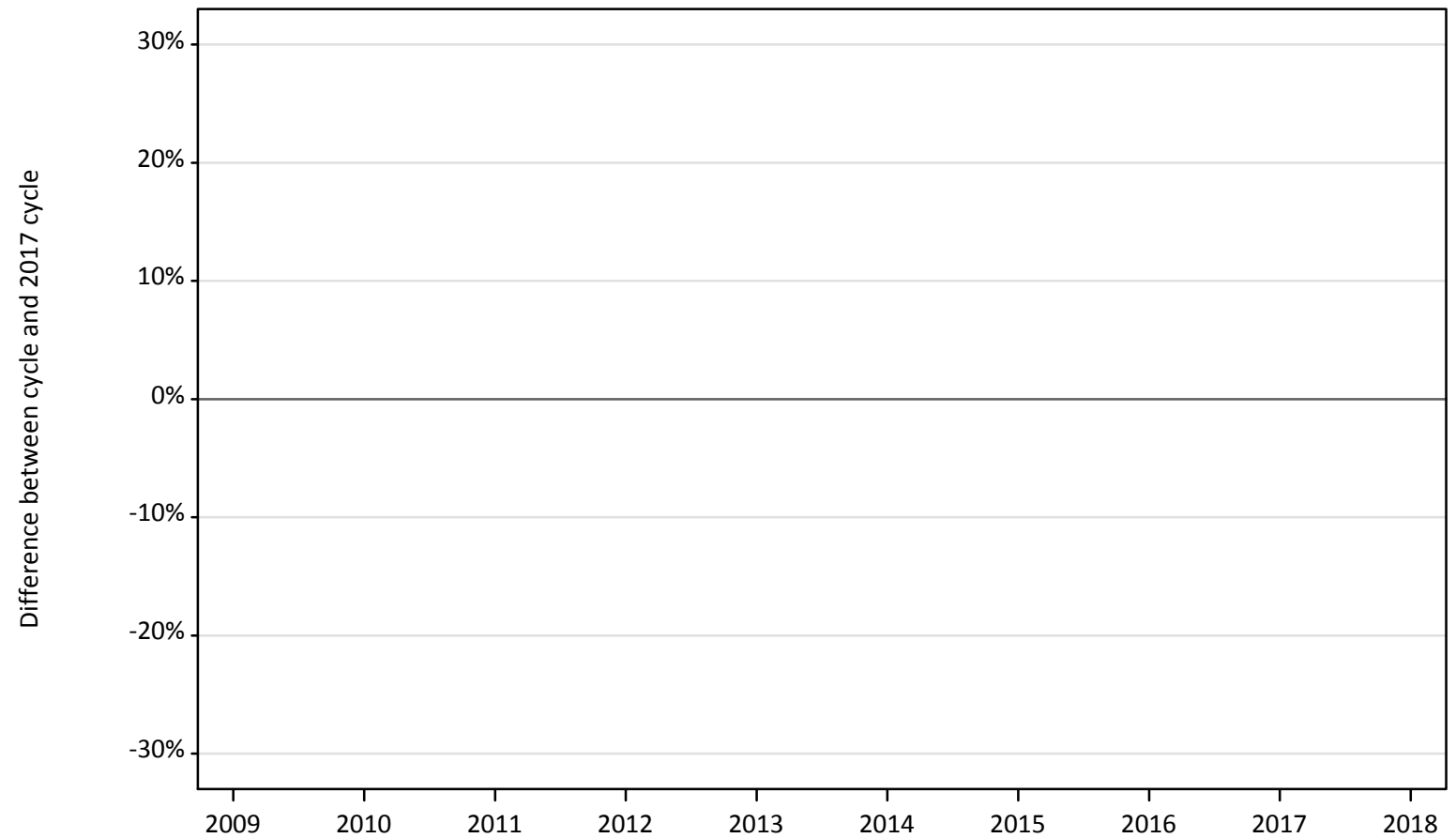
| Applicant type | Status             | 2009 | 2010 | 2011 | 2012 | 2013 | 2014 | 2015 | 2016 | 2017 | 2018 |
|----------------|--------------------|------|------|------|------|------|------|------|------|------|------|
| Main scheme    | Placed (Clearing)  | 13%  | -16% | -22% | -13% | -15% | -28% | -8%  | -3%  | 0%   | -14% |
|                | Placed (Firm)      | -26% | -19% | -19% | -20% | -17% | -14% | -5%  | -2%  | 0%   | 3%   |
|                | Placed (Insurance) | -3%  | 13%  | 3%   | 5%   | -11% | -3%  | 3%   | 1%   | 0%   | -11% |
|                | Placed (Other)     | 49%  | 0%   | 12%  | -17% | -32% | -26% | -20% | -3%  | 0%   | -3%  |

Note: The percentage change is not recorded in the above table for groups with fewer than 10 placed applicants in that cycle or in the 2017 cycle.

## A.9 Main scheme applicants placed through adjustment: 6 days after A level results day

Placed through adjustment: difference between cycle and 2017 cycle

Placed (Adjustment)



Note: The percentage change is not plotted in the above chart for groups with fewer than 30 placed applicants in any one cycle.

### A.10 Main scheme applicants placed through adjustment: 6 days after A level results day

Placed through adjustment: applicants at 6 days after A level results day

| Applicant type | Status              | 2009 | 2010 | 2011 | 2012 | 2013 | 2014 | 2015 | 2016 | 2017 | 2018 |
|----------------|---------------------|------|------|------|------|------|------|------|------|------|------|
| Main scheme    | Placed (Adjustment) | 10   | 0    | 10   | 20   | 10   | 10   | 10   | 10   | 0    | 10   |

### A.11 Main scheme applicants placed through adjustment: 6 days after A level results day

Placed through adjustment: difference between cycle and 2017 cycle

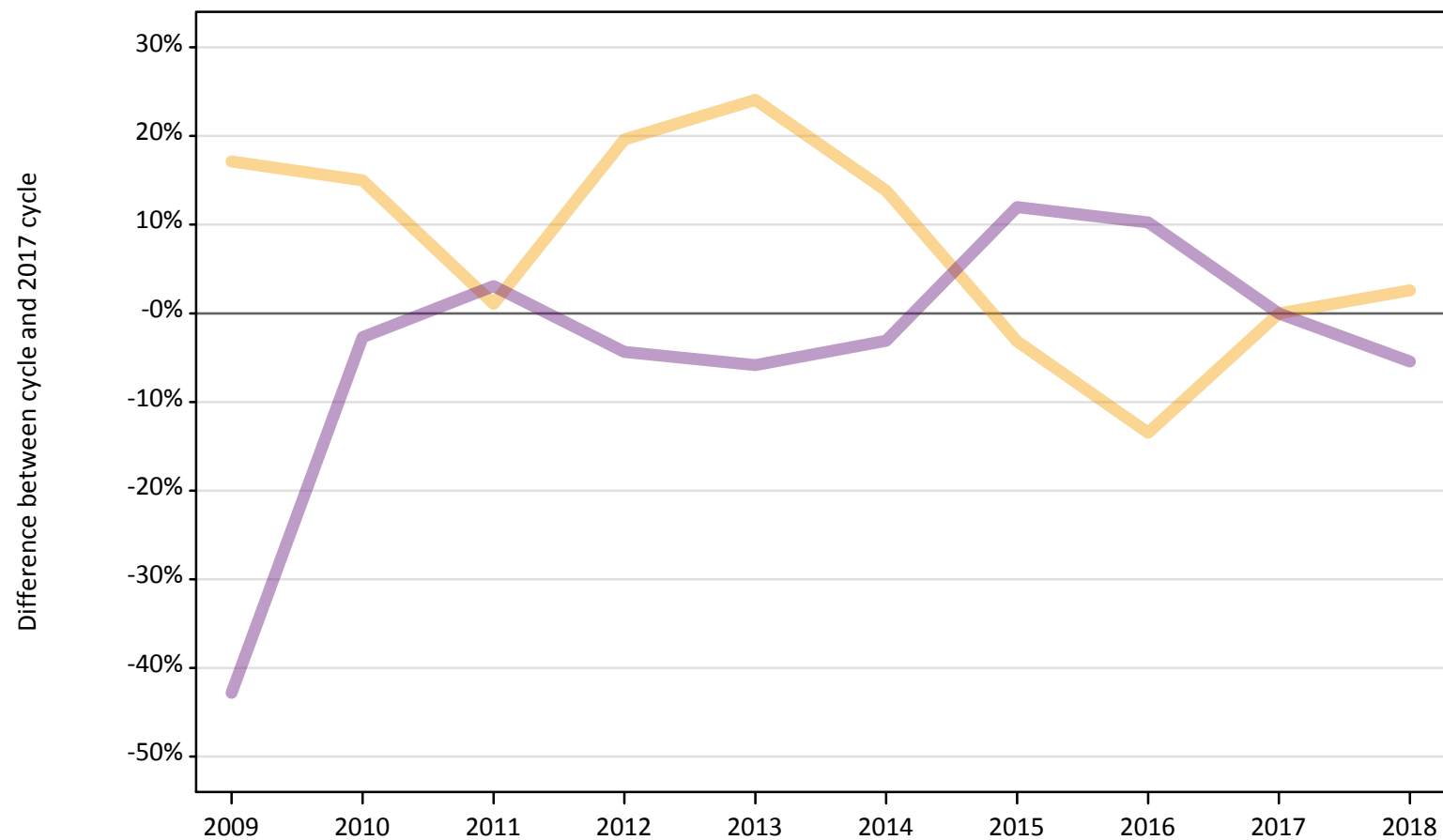
| Applicant type | Status              | 2009 | 2010 | 2011 | 2012 | 2013 | 2014 | 2015 | 2016 | 2017 | 2018 |
|----------------|---------------------|------|------|------|------|------|------|------|------|------|------|
| Main scheme    | Placed (Adjustment) |      |      |      |      |      |      |      |      |      |      |

Note: The percentage change is not recorded in the above table for groups with fewer than 10 placed applicants in that cycle or in the 2017 cycle.

## A.12 Main scheme applicants not currently placed from Scotland: 6 days after A level results day

Applicants in unplaced states: difference between cycle and 2017 cycle

— Holding offer  
— Free to be placed in Clearing



Note: The percentage change is not plotted in the above chart for groups with fewer than 30 unplaced applicants in any one cycle.



**A.13 Main scheme applicants not currently placed from Scotland: 6 days after A level results day**

Applicants in unplaced states: applicants at 6 days after A level results day

| Applicant type | Status                        | 2009  | 2010   | 2011   | 2012   | 2013   | 2014   | 2015   | 2016   | 2017   | 2018   |
|----------------|-------------------------------|-------|--------|--------|--------|--------|--------|--------|--------|--------|--------|
| Main scheme    | Holding offer                 | 2,220 | 2,180  | 1,910  | 2,260  | 2,350  | 2,160  | 1,830  | 1,640  | 1,890  | 1,940  |
|                | Free to be placed in Clearing | 7,540 | 12,840 | 13,600 | 12,620 | 12,420 | 12,780 | 14,770 | 14,540 | 13,190 | 12,480 |

**A.14 Main scheme applicants not currently placed from Scotland: 6 days after A level results day**

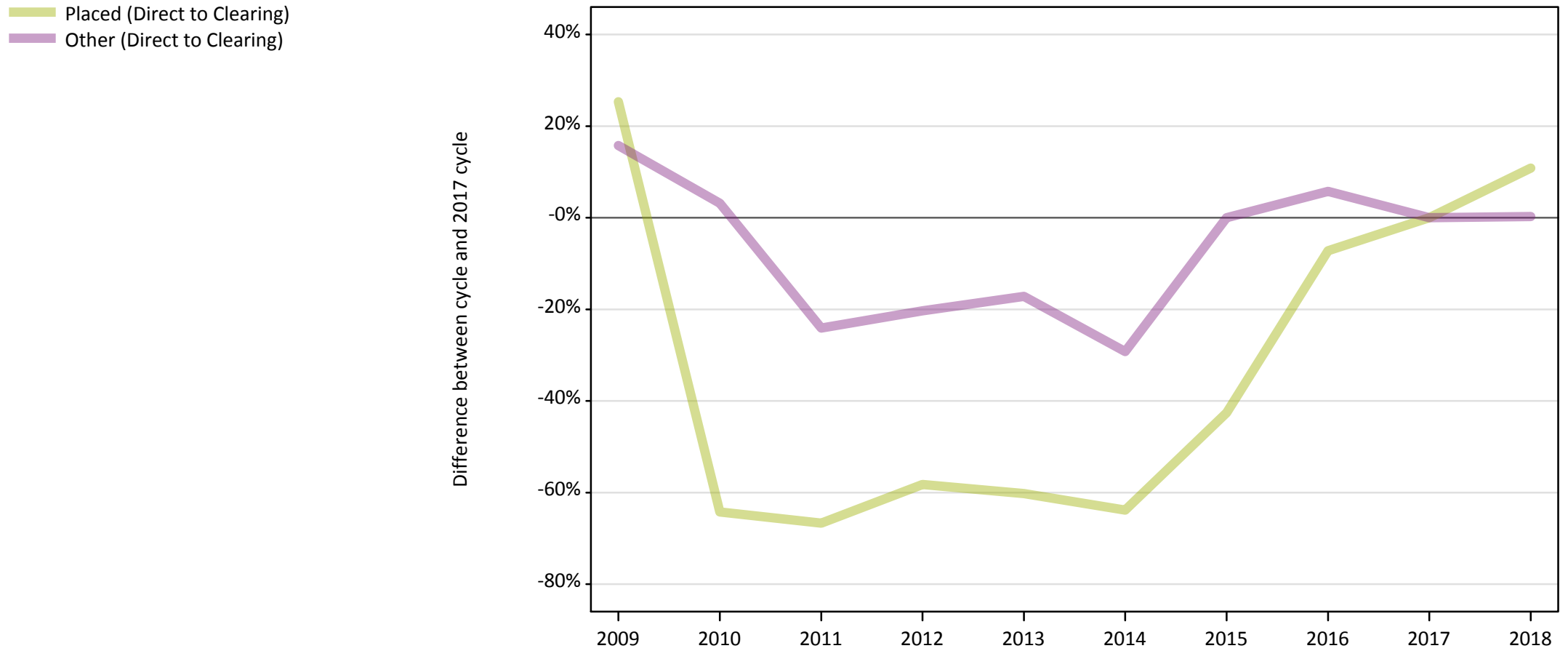
Applicants in unplaced states: difference between cycle and 2017 cycle

| Applicant type | Status                        | 2009 | 2010 | 2011 | 2012 | 2013 | 2014 | 2015 | 2016 | 2017 | 2018 |
|----------------|-------------------------------|------|------|------|------|------|------|------|------|------|------|
| Main scheme    | Holding offer                 | 17%  | 15%  | 1%   | 20%  | 24%  | 14%  | -3%  | -13% | 0%   | 3%   |
|                | Free to be placed in Clearing | -43% | -3%  | 3%   | -4%  | -6%  | -3%  | 12%  | 10%  | 0%   | -5%  |

Note: The percentage change is not recorded in the above table for groups with fewer than 10 unplaced applicants in that cycle or in the 2017 cycle.

### A.15 Direct to Clearing applicants from Scotland: 6 days after A level results day

Direct to Clearing: difference between cycle and 2017 cycle



Note: The percentage change is not plotted in the above chart for groups with fewer than 30 placed applicants in any one cycle.

### A.16 Direct to Clearing applicants from Scotland: 6 days after A level results day

Direct to Clearing 6 days after A level results day

| Applicant type     | Status                      | 2009 | 2010 | 2011 | 2012 | 2013 | 2014 | 2015 | 2016 | 2017 | 2018 |
|--------------------|-----------------------------|------|------|------|------|------|------|------|------|------|------|
| Direct to Clearing | Placed (Direct to Clearing) | 310  | 90   | 80   | 100  | 100  | 90   | 140  | 230  | 250  | 280  |
|                    | Other (Direct to Clearing)  | 400  | 360  | 270  | 280  | 290  | 250  | 350  | 370  | 350  | 350  |

### A.17 Direct to Clearing applicants from Scotland: 6 days after A level results day

Direct to Clearing: difference between cycle and 2017 cycle

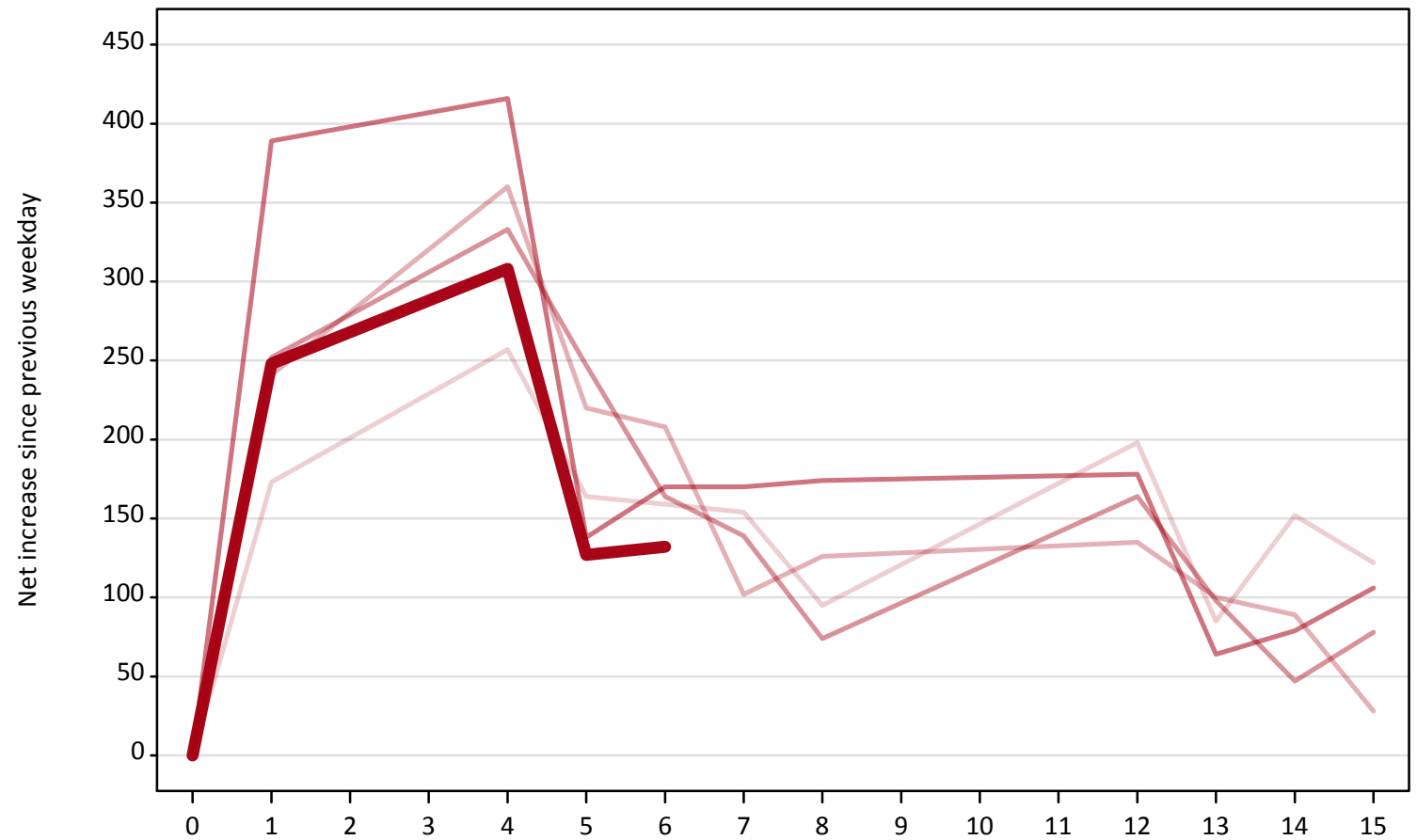
| Applicant type     | Status                      | 2009 | 2010 | 2011 | 2012 | 2013 | 2014 | 2015 | 2016 | 2017 | 2018 |
|--------------------|-----------------------------|------|------|------|------|------|------|------|------|------|------|
| Direct to Clearing | Placed (Direct to Clearing) | 25%  | -64% | -67% | -58% | -60% | -64% | -43% | -7%  | 0%   | 11%  |
|                    | Other (Direct to Clearing)  | 16%  | 3%   | -24% | -20% | -17% | -29% | 0%   | 6%   | 0%   | 0%   |

Note: The percentage change is not recorded in the above table for groups with fewer than 10 placed applicants in that cycle or in the 2017 cycle.

### A.18 All Placed: Daily net change (from Scotland)

Net increase since previous weekday (2018 cycle up to 6 days after A level results day)

- 2014
- 2015
- 2016
- 2017
- 2018**

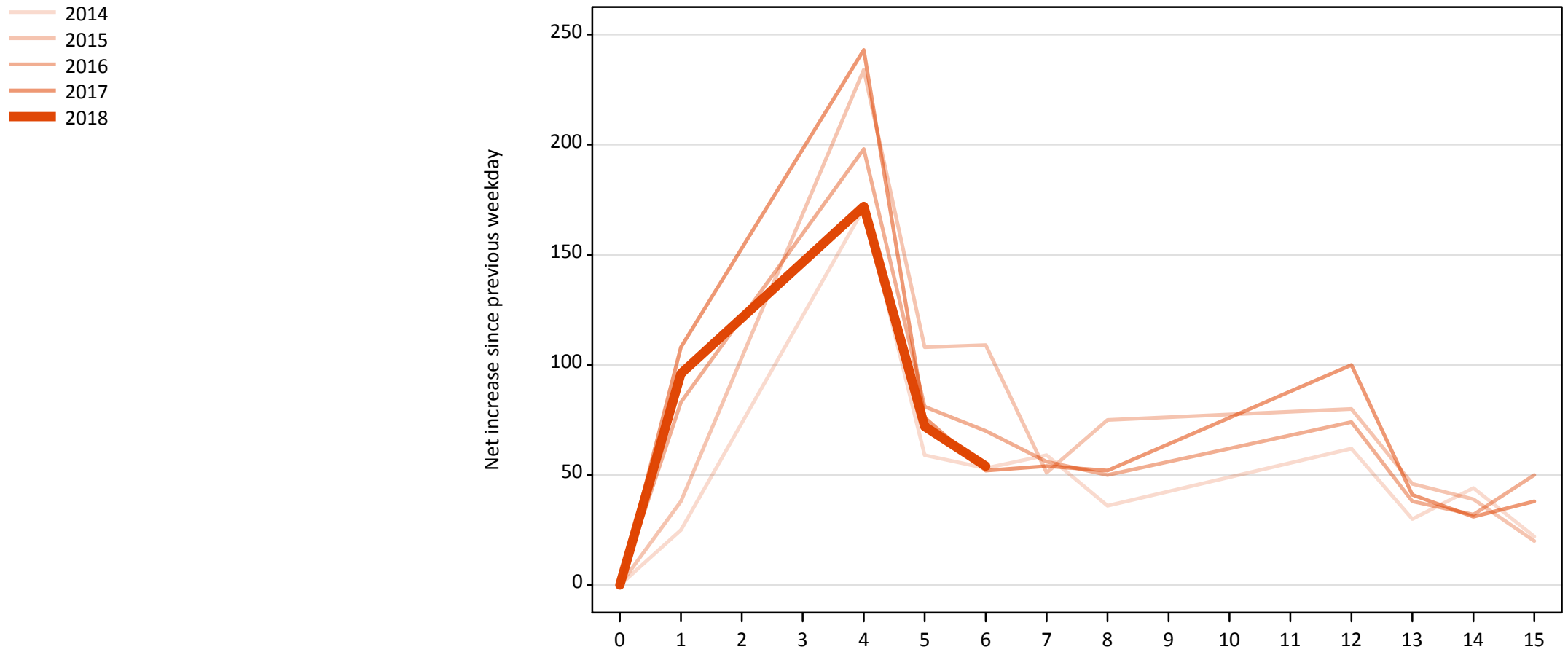


**A.19 All Placed: Daily net change (from Scotland)**

Net increase since previous weekday (2018 cycle up to 6 days after A level results day)

| Applicant status, days since A level results day |    | 2014 | 2015 | 2016 | 2017 | 2018 |
|--|----|------|------|------|------|------|
| All Placed                                       | 0  | 0    | 0    | 0    | 0    | 0    |
|  | 1  | 170  | 240  | 250  | 390  | 250  |
|  | 4  | 260  | 360  | 330  | 420  | 310  |
|  | 5  | 160  | 220  | 250  | 140  | 130  |
|  | 6  | 160  | 210  | 160  | 170  | 130  |
|  | 7  | 150  | 100  | 140  | 170  |      |
|  | 8  | 100  | 130  | 70   | 170  |      |
|  | 12 | 200  | 140  | 160  | 180  |      |
|  | 13 | 90   | 100  | 100  | 60   |      |
|  | 14 | 150  | 90   | 50   | 80   |      |
|  | 15 | 120  | 30   | 80   | 110  |      |

**A.20 Placed through Clearing only: Daily net change (from Scotland)**  
Net increase since previous weekday (2018 cycle up to 6 days after A level results day)



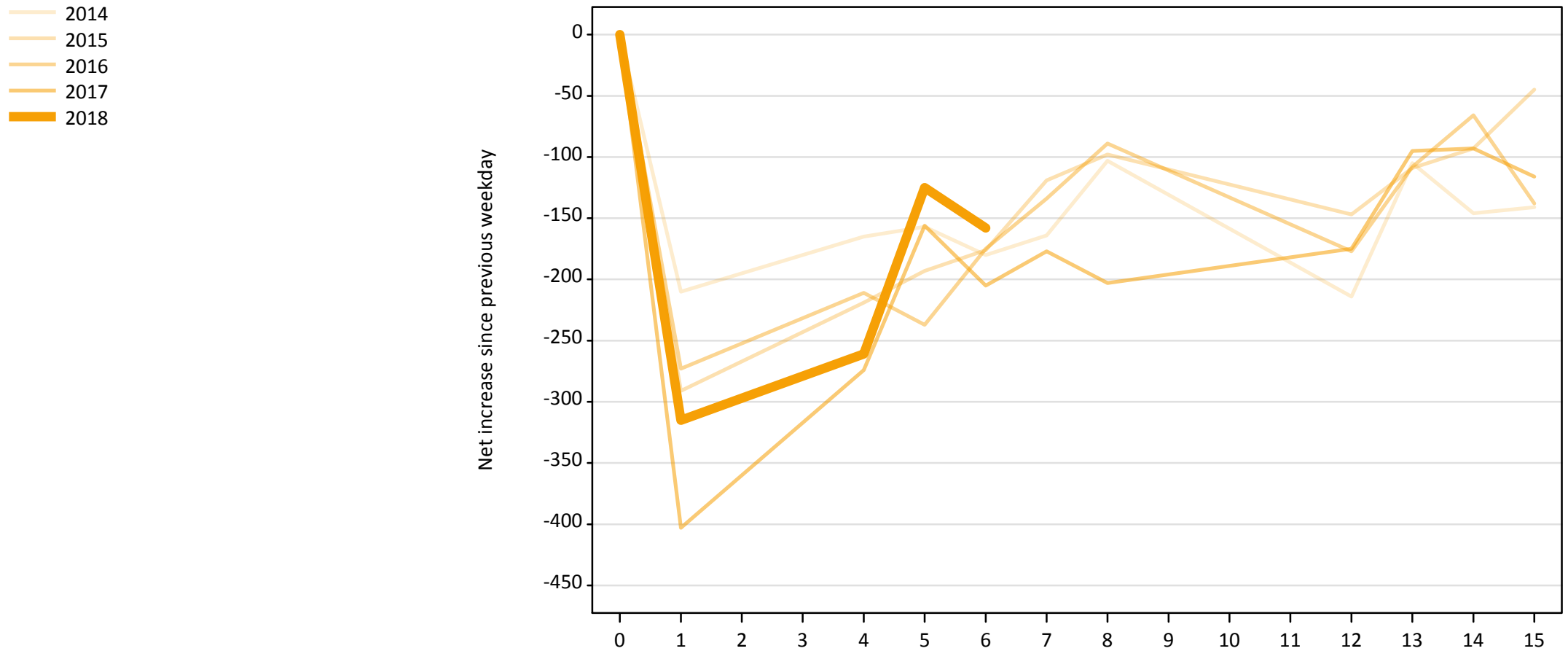
### A.21 Placed through Clearing only: Daily net change (from Scotland)

Net increase since previous weekday (2018 cycle up to 6 days after A level results day)

| Applicant status, days since A level results day |    | 2014 | 2015 | 2016 | 2017 | 2018 |
|--|----|------|------|------|------|------|
| Placed through Clearing only                     | 0  | 0    | 0    | 0    | 0    | 0    |
|  | 1  | 30   | 40   | 80   | 110  | 100  |
|  | 4  | 170  | 230  | 200  | 240  | 170  |
|  | 5  | 60   | 110  | 80   | 80   | 70   |
|  | 6  | 50   | 110  | 70   | 50   | 50   |
|  | 7  | 60   | 50   | 60   | 50   |      |
|  | 8  | 40   | 80   | 50   | 50   |      |
|  | 12 | 60   | 80   | 70   | 100  |      |
|  | 13 | 30   | 50   | 40   | 40   |      |
|  | 14 | 40   | 40   | 30   | 30   |      |
|  | 15 | 20   | 20   | 50   | 40   |      |

## A.22 Holding Offer: Daily net change (from Scotland)

Net increase since previous weekday (2018 cycle up to 6 days after A level results day)





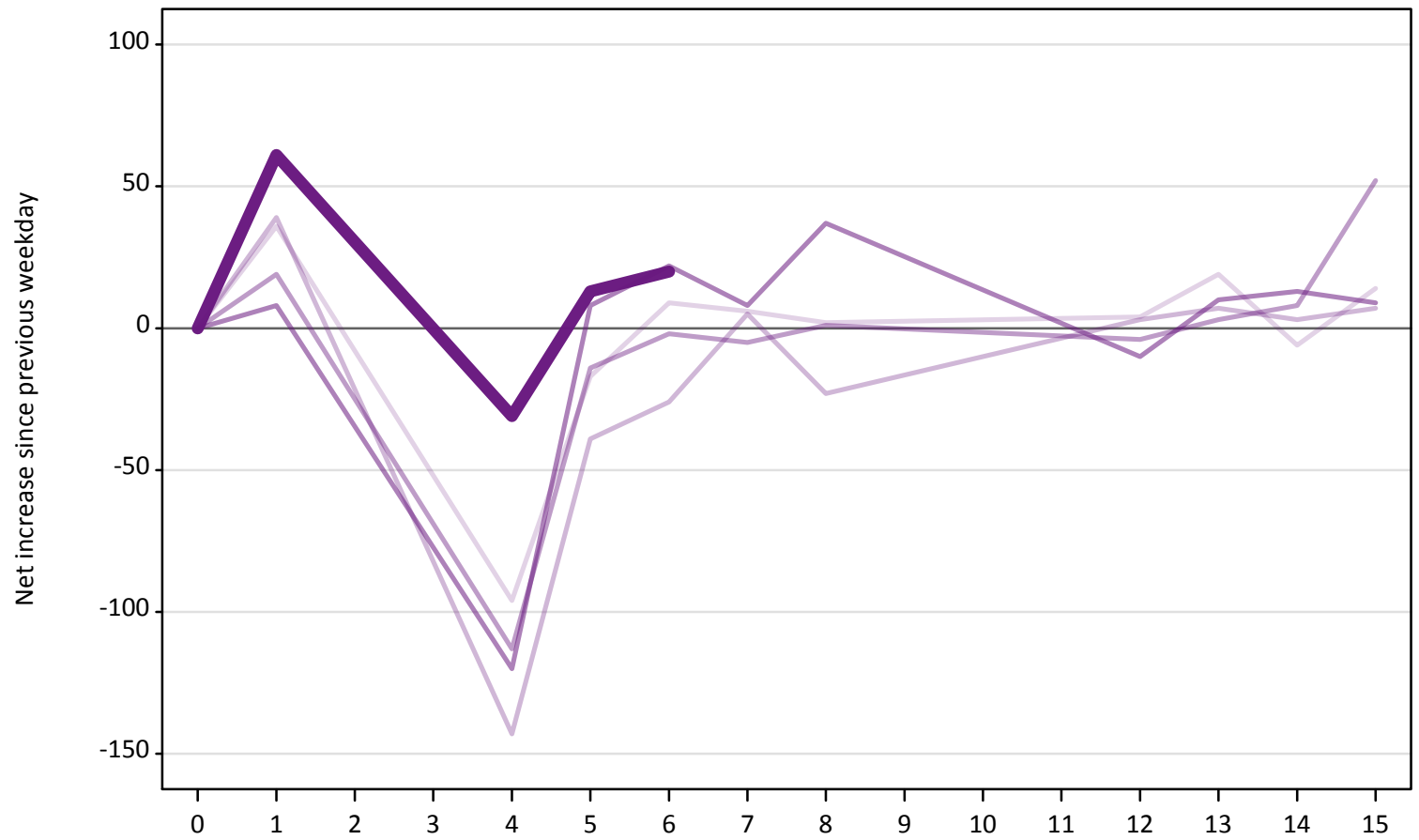
### A.23 Holding Offer: Daily net change (from Scotland)

Net increase since previous weekday (2018 cycle up to 6 days after A level results day)

| Applicant status, days since A level results day |    | 2014 | 2015 | 2016 | 2017 | 2018 |
|--|----|------|------|------|------|------|
| Holding Offer                                    | 0  | 0    | 0    | 0    | 0    | 0    |
|  | 1  | -210 | -290 | -270 | -400 | -320 |
|  | 4  | -170 | -220 | -210 | -270 | -260 |
|  | 5  | -160 | -190 | -240 | -160 | -130 |
|  | 6  | -180 | -180 | -180 | -210 | -160 |
|  | 7  | -160 | -120 | -130 | -180 |      |
|  | 8  | -100 | -100 | -90  | -200 |      |
|  | 12 | -210 | -150 | -180 | -180 |      |
|  | 13 | -110 | -110 | -110 | -100 |      |
|  | 14 | -150 | -90  | -70  | -90  |      |
|  | 15 | -140 | -50  | -140 | -120 |      |

**A.24 Free to be placed in Clearing: Daily net change (from Scotland)**  
Net increase since previous weekday (2018 cycle up to 6 days after A level results day)

- 2014
- 2015
- 2016
- 2017
- 2018



**A.25 Free to be placed in Clearing: Daily net change (from Scotland)**

Net increase since previous weekday (2018 cycle up to 6 days after A level results day)

| Applicant status, days since A level results day |    | 2014 | 2015 | 2016 | 2017 | 2018 |
|--|----|------|------|------|------|------|
| Free to be placed in Clearing                    | 0  | 0    | 0    | 0    | 0    | 0    |
|  | 1  | 40   | 40   | 20   | 10   | 60   |
|  | 4  | -100 | -140 | -110 | -120 | -30  |
|  | 5  | -20  | -40  | -10  | 10   | 10   |
|  | 6  | 10   | -30  | 0    | 20   | 20   |
|  | 7  | 10   | 10   | -10  | 10   |      |
|  | 8  | 0    | -20  | 0    | 40   |      |
|  | 12 | 0    | 0    | 0    | -10  |      |
|  | 13 | 20   | 10   | 0    | 10   |      |
|  | 14 | -10  | 0    | 10   | 10   |      |
|  | 15 | 10   | 10   | 50   | 10   |      |