

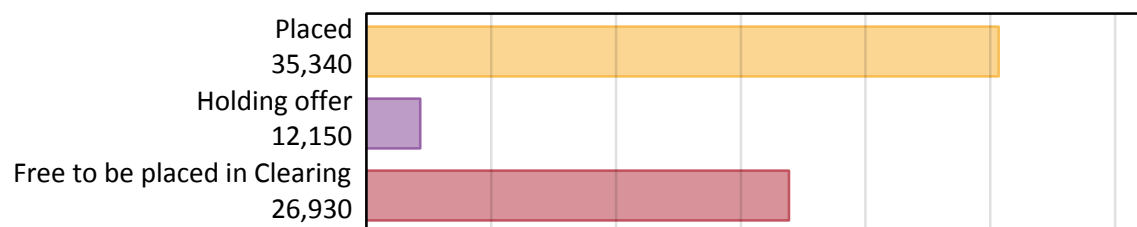
Daily Clearing Analysis: Overview

Analysis at 00:05 on Wednesday 22 August 2018 (6 days after A level results day)

A.1 Applicants by type and status from outside the EU, 2018 cycle

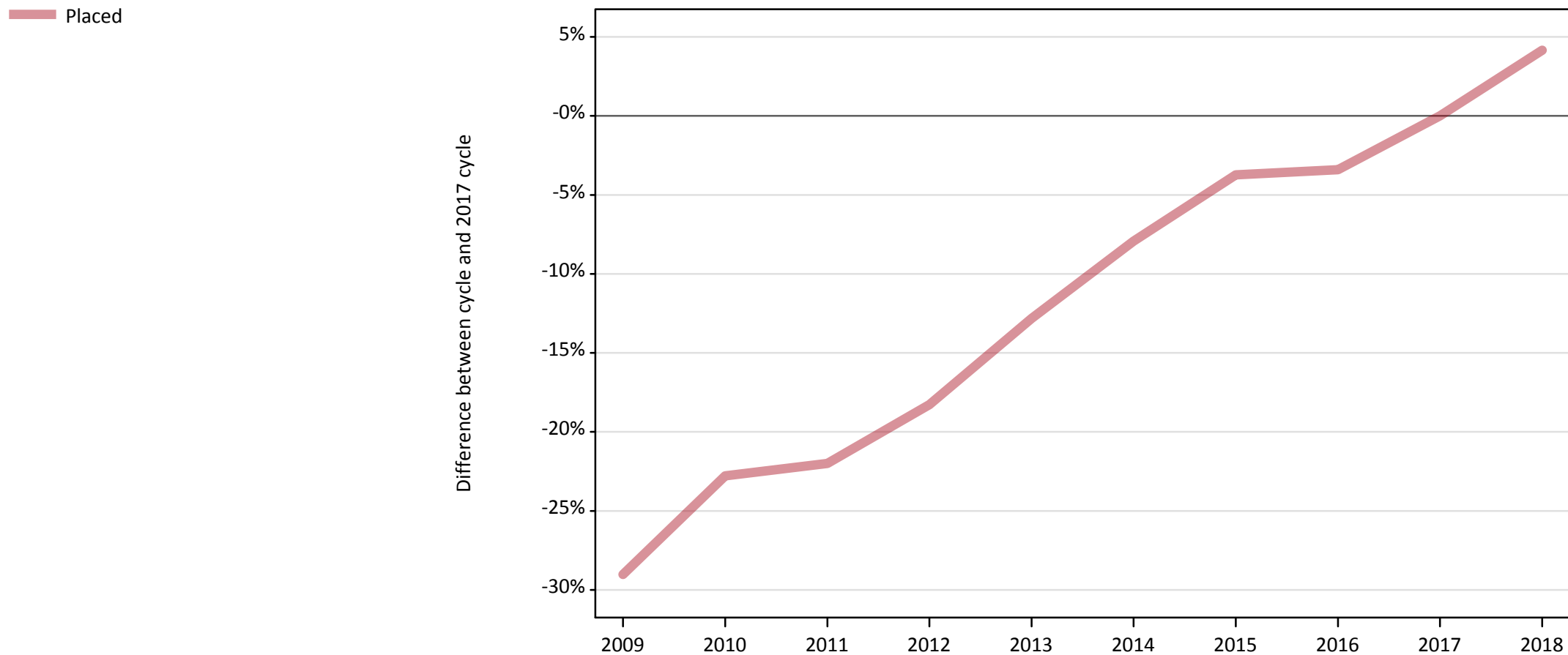
Applicant type	Status	2018
Main scheme	Placed (Clearing)	2,510
	Placed (Adjustment)	50
	Placed (Firm)	26,940
	Placed (Insurance)	3,540
	Placed (Other)	1,790
	Holding offer	12,150
	Free to be placed in Clearing	26,930
Direct to Clearing	Placed (Direct to Clearing)	510
	Other (Direct to Clearing)	740
All applicants	Placed	35,340

A.2 Summary of applicants who are placed, holding offers or free to be placed in Clearing (outside the EU)



A.3 All placed applicants from outside the EU: 6 days after A level results day

All placed applicants: difference between cycle and 2017 cycle



Note: The percentage change is not plotted in the above chart for groups with fewer than 30 placed applicants in any one cycle.

A.4 All placed applicants from outside the EU: 6 days after A level results day

All placed applicants: applicants at 6 days after A level results day

Applicant type	Status	2009	2010	2011	2012	2013	2014	2015	2016	2017	2018
All applicants	Placed	24,080	26,200	26,460	27,730	29,580	31,240	32,660	32,770	33,930	35,340

A.5 All placed applicants from outside the EU: 6 days after A level results day

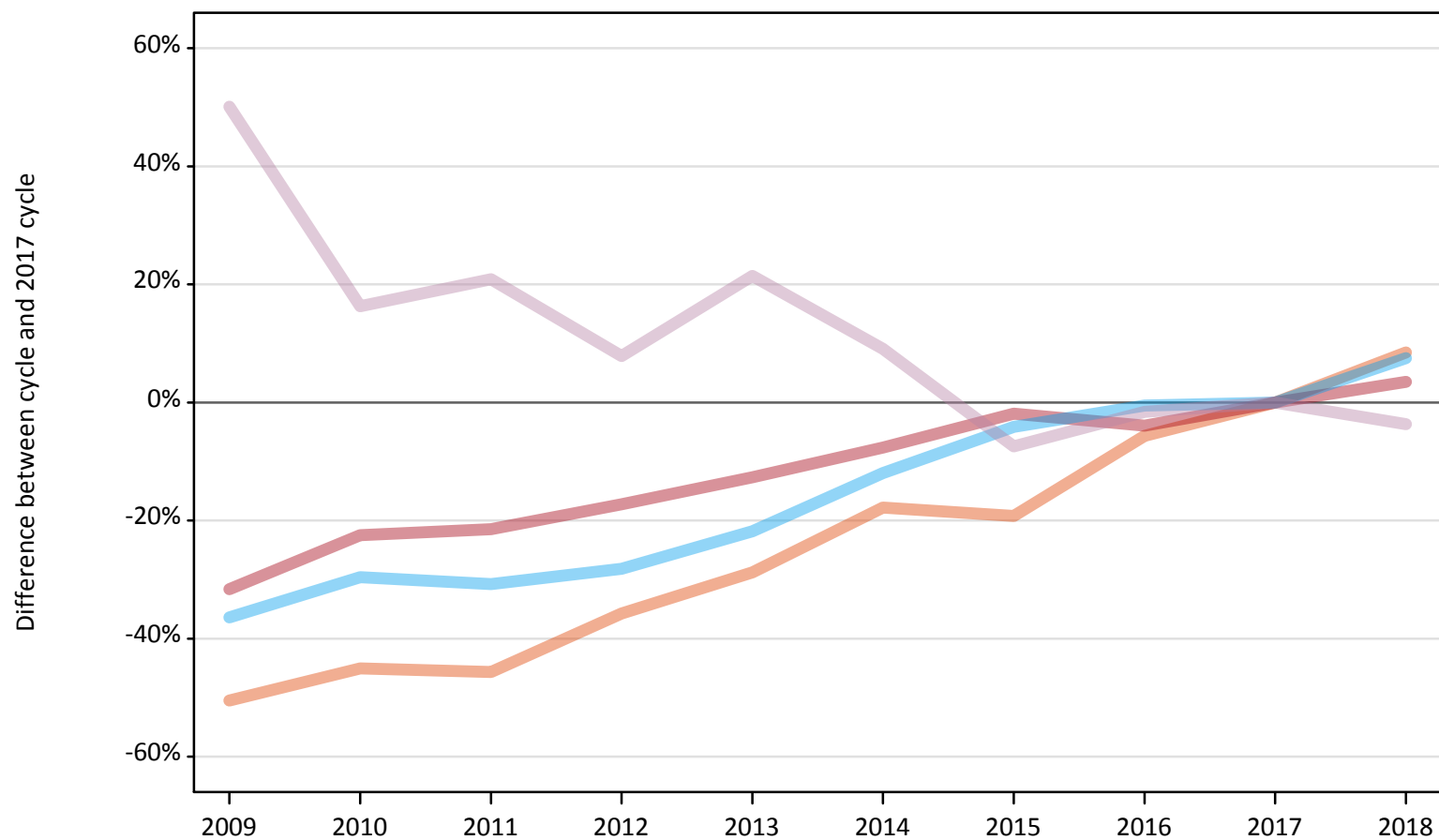
All placed applicants: difference between cycle and 2017 cycle

Applicant type	Status	2009	2010	2011	2012	2013	2014	2015	2016	2017	2018
All applicants	Placed	-29%	-23%	-22%	-18%	-13%	-8%	-4%	-3%	0%	4%

Note: The percentage change is not recorded in the above table for groups with fewer than 10 placed applicants in that cycle or in the 2017 cycle.

A.6 Placed main scheme applicants from outside the EU: 6 days after A level results day
All Main scheme placed routes (excluding Adjustment): difference between cycle and 2017 cycle

- Placed (Clearing)
- Placed (Firm)
- Placed (Insurance)
- Placed (Other)



Note: The percentage change is not plotted in the above chart for groups with fewer than 30 placed applicants in any one cycle.

A.7 Placed main scheme applicants from outside the EU: 6 days after A level results day

All Main scheme placed routes (excluding Adjustment): applicants at 6 days after A level results day

Applicant type	Status	2009	2010	2011	2012	2013	2014	2015	2016	2017	2018
Main scheme	Placed (Clearing)	1,150	1,270	1,260	1,490	1,650	1,900	1,870	2,190	2,320	2,510
	Placed (Firm)	17,810	20,180	20,450	21,550	22,740	24,050	25,540	25,020	26,040	26,940
	Placed (Insurance)	2,090	2,320	2,280	2,370	2,570	2,900	3,160	3,280	3,290	3,540
	Placed (Other)	2,790	2,160	2,250	2,000	2,260	2,030	1,720	1,830	1,860	1,790

A.8 Placed main scheme applicants from outside the EU: 6 days after A level results day

All Main scheme placed routes (excluding Adjustment): difference between cycle and 2017 cycle

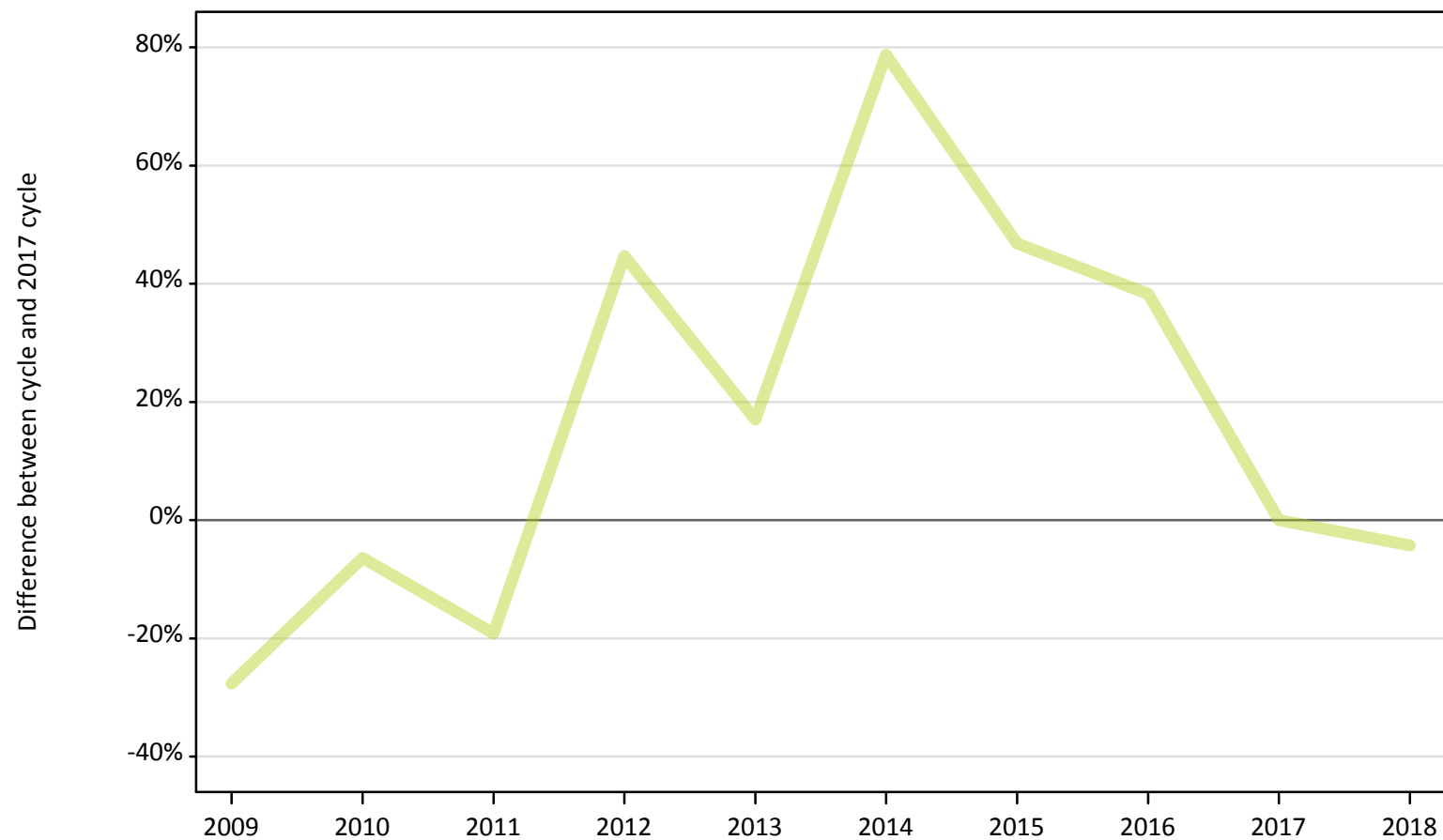
Applicant type	Status	2009	2010	2011	2012	2013	2014	2015	2016	2017	2018
Main scheme	Placed (Clearing)	-50%	-45%	-46%	-36%	-29%	-18%	-19%	-6%	0%	8%
	Placed (Firm)	-32%	-22%	-21%	-17%	-13%	-8%	-2%	-4%	0%	3%
	Placed (Insurance)	-36%	-30%	-31%	-28%	-22%	-12%	-4%	-1%	0%	8%
	Placed (Other)	50%	16%	21%	8%	21%	9%	-7%	-2%	0%	-4%

Note: The percentage change is not recorded in the above table for groups with fewer than 10 placed applicants in that cycle or in the 2017 cycle.

A.9 Main scheme applicants placed through adjustment: 6 days after A level results day

Placed through adjustment: difference between cycle and 2017 cycle

Placed (Adjustment)



Note: The percentage change is not plotted in the above chart for groups with fewer than 30 placed applicants in any one cycle.

A.10 Main scheme applicants placed through adjustment: 6 days after A level results day

Placed through adjustment: applicants at 6 days after A level results day

Applicant type	Status	2009	2010	2011	2012	2013	2014	2015	2016	2017	2018
Main scheme	Placed (Adjustment)	30	40	40	70	60	80	70	70	50	50

A.11 Main scheme applicants placed through adjustment: 6 days after A level results day

Placed through adjustment: difference between cycle and 2017 cycle

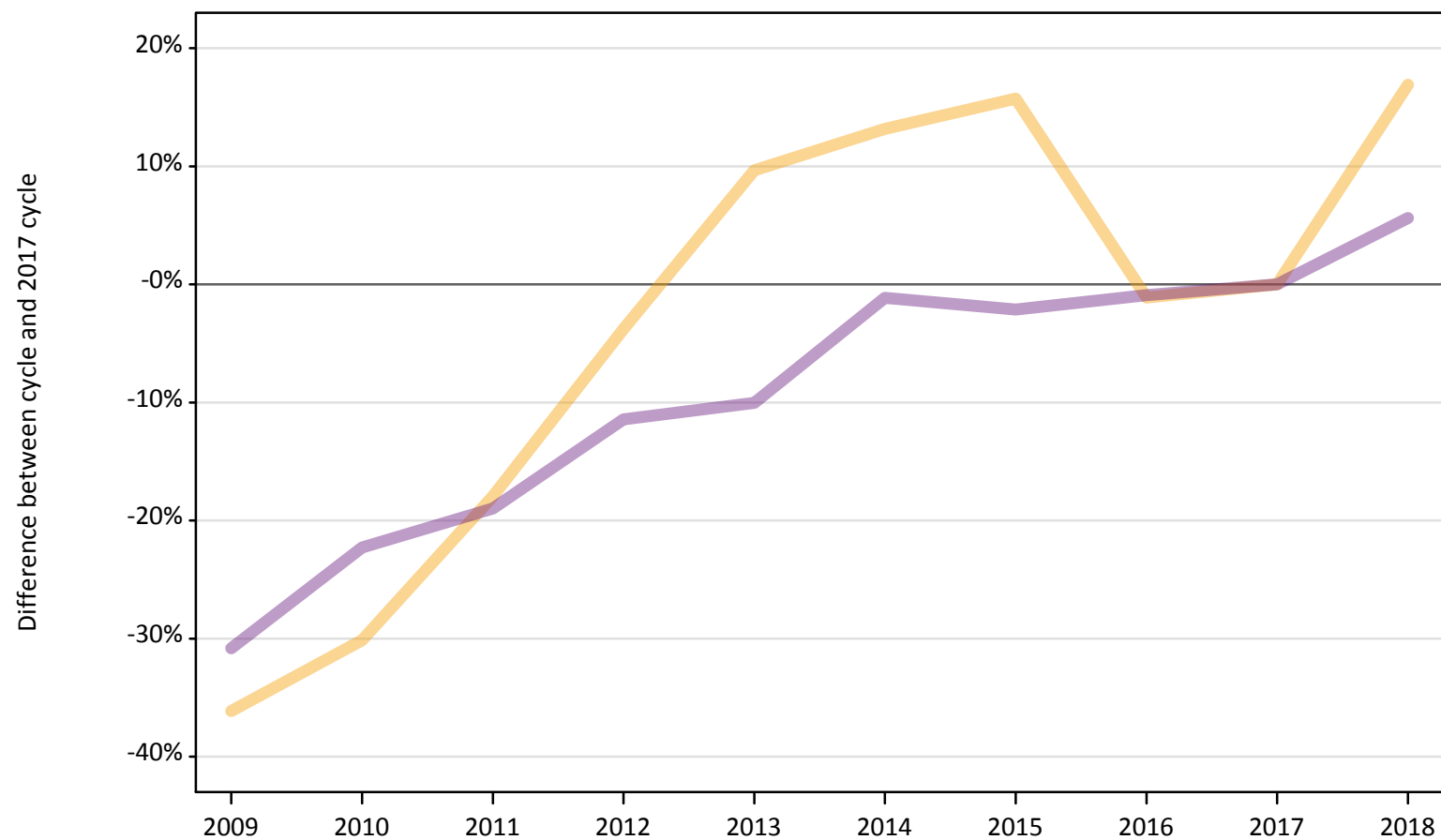
Applicant type	Status	2009	2010	2011	2012	2013	2014	2015	2016	2017	2018
Main scheme	Placed (Adjustment)	-28%	-6%	-19%	45%	17%	79%	47%	38%	0%	-4%

Note: The percentage change is not recorded in the above table for groups with fewer than 10 placed applicants in that cycle or in the 2017 cycle.

A.12 Main scheme applicants not currently placed from outside the EU: 6 days after A level results day

Applicants in unplaced states: difference between cycle and 2017 cycle

— Holding offer
— Free to be placed in Clearing



Note: The percentage change is not plotted in the above chart for groups with fewer than 30 unplaced applicants in any one cycle.

A.13 Main scheme applicants not currently placed from outside the EU: 6 days after A level results day

Applicants in unplaced states: applicants at 6 days after A level results day

Applicant type	Status	2009	2010	2011	2012	2013	2014	2015	2016	2017	2018
Main scheme	Holding offer	6,640	7,260	8,530	10,000	11,400	11,760	12,030	10,280	10,390	12,150
	Free to be placed in Clearing	17,640	19,820	20,660	22,580	22,940	25,210	24,960	25,260	25,500	26,930

A.14 Main scheme applicants not currently placed from outside the EU: 6 days after A level results day

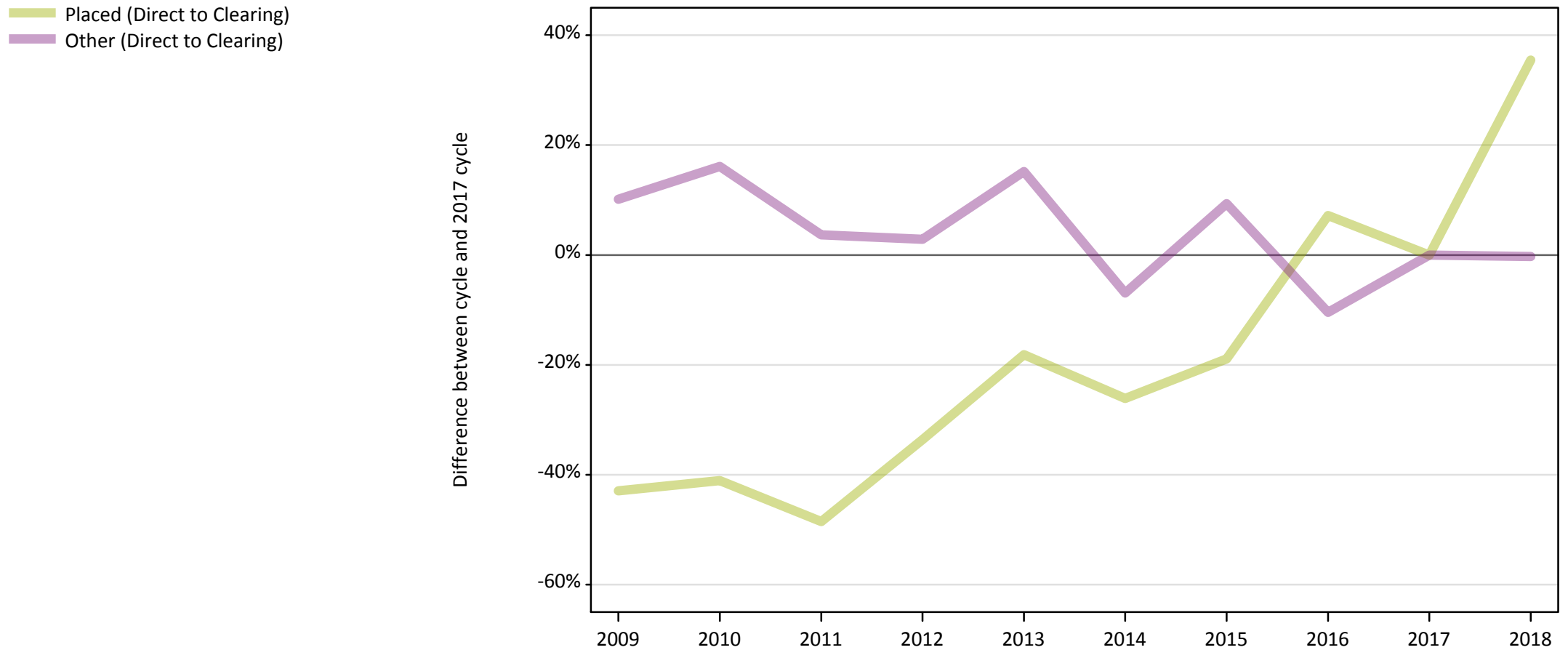
Applicants in unplaced states: difference between cycle and 2017 cycle

Applicant type	Status	2009	2010	2011	2012	2013	2014	2015	2016	2017	2018
Main scheme	Holding offer	-36%	-30%	-18%	-4%	10%	13%	16%	-1%	0%	17%
	Free to be placed in Clearing	-31%	-22%	-19%	-11%	-10%	-1%	-2%	-1%	0%	6%

Note: The percentage change is not recorded in the above table for groups with fewer than 10 unplaced applicants in that cycle or in the 2017 cycle.

A.15 Direct to Clearing applicants from outside the EU: 6 days after A level results day

Direct to Clearing: difference between cycle and 2017 cycle



Note: The percentage change is not plotted in the above chart for groups with fewer than 30 placed applicants in any one cycle.

A.16 Direct to Clearing applicants from outside the EU: 6 days after A level results day

Direct to Clearing 6 days after A level results day

Applicant type	Status	2009	2010	2011	2012	2013	2014	2015	2016	2017	2018
Direct to Clearing	Placed (Direct to Clearing)	210	220	190	250	310	280	300	400	380	510
	Other (Direct to Clearing)	810	860	770	760	850	690	810	660	740	740

A.17 Direct to Clearing applicants from outside the EU: 6 days after A level results day

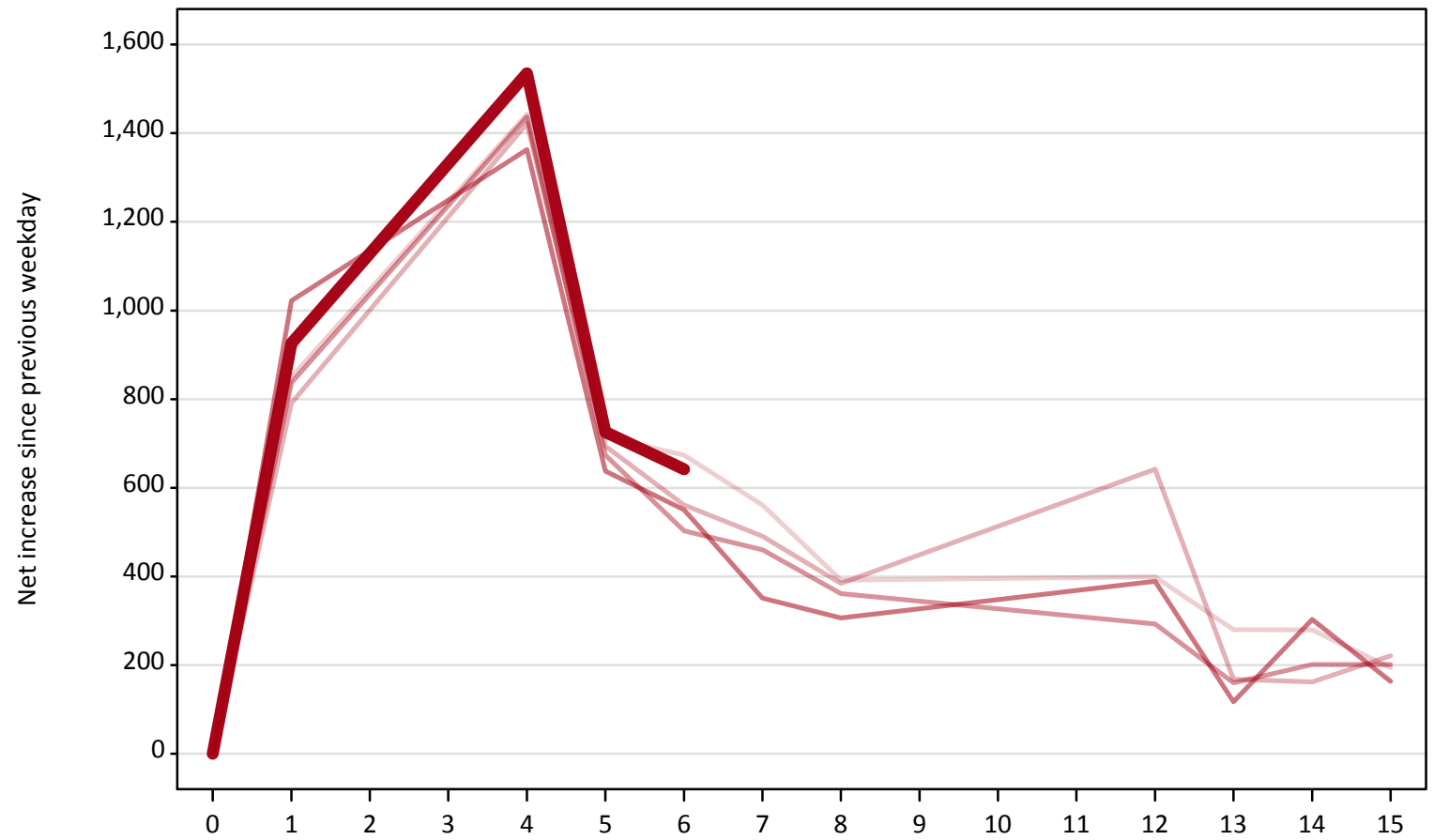
Direct to Clearing: difference between cycle and 2017 cycle

Applicant type	Status	2009	2010	2011	2012	2013	2014	2015	2016	2017	2018
Direct to Clearing	Placed (Direct to Clearing)	-43%	-41%	-49%	-34%	-18%	-26%	-19%	7%	0%	35%
	Other (Direct to Clearing)	10%	16%	4%	3%	15%	-7%	9%	-10%	0%	-0%

Note: The percentage change is not recorded in the above table for groups with fewer than 10 placed applicants in that cycle or in the 2017 cycle.

A.18 All Placed: Daily net change (from outside the EU)
Net increase since previous weekday (2018 cycle up to 6 days after A level results day)

- 2014
- 2015
- 2016
- 2017
- 2018**



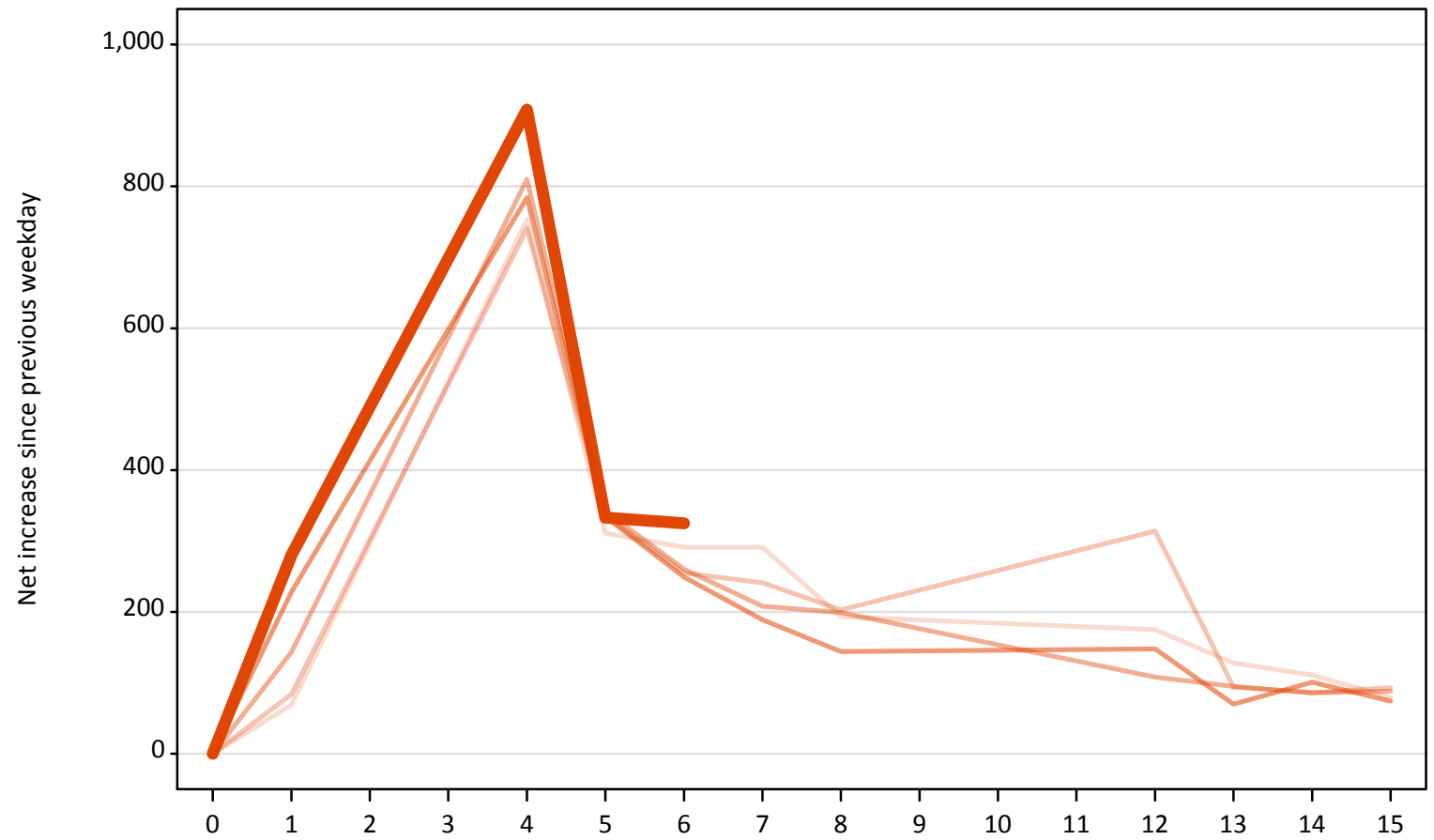
A.19 All Placed: Daily net change (from outside the EU)

Net increase since previous weekday (2018 cycle up to 6 days after A level results day)

Applicant status, days since A level results day		2014	2015	2016	2017	2018
All Placed	0	0	0	0	0	0
	1	850	790	840	1,020	930
	4	1,440	1,420	1,440	1,360	1,540
	5	710	690	670	640	730
	6	670	560	500	550	640
	7	560	490	460	350	
	8	390	380	360	310	
	12	400	640	290	390	
	13	280	170	160	120	
	14	280	160	200	300	
	15	190	220	200	160	

A.20 Placed through Clearing only: Daily net change (from outside the EU)
Net increase since previous weekday (2018 cycle up to 6 days after A level results day)

- 2014
- 2015
- 2016
- 2017
- 2018



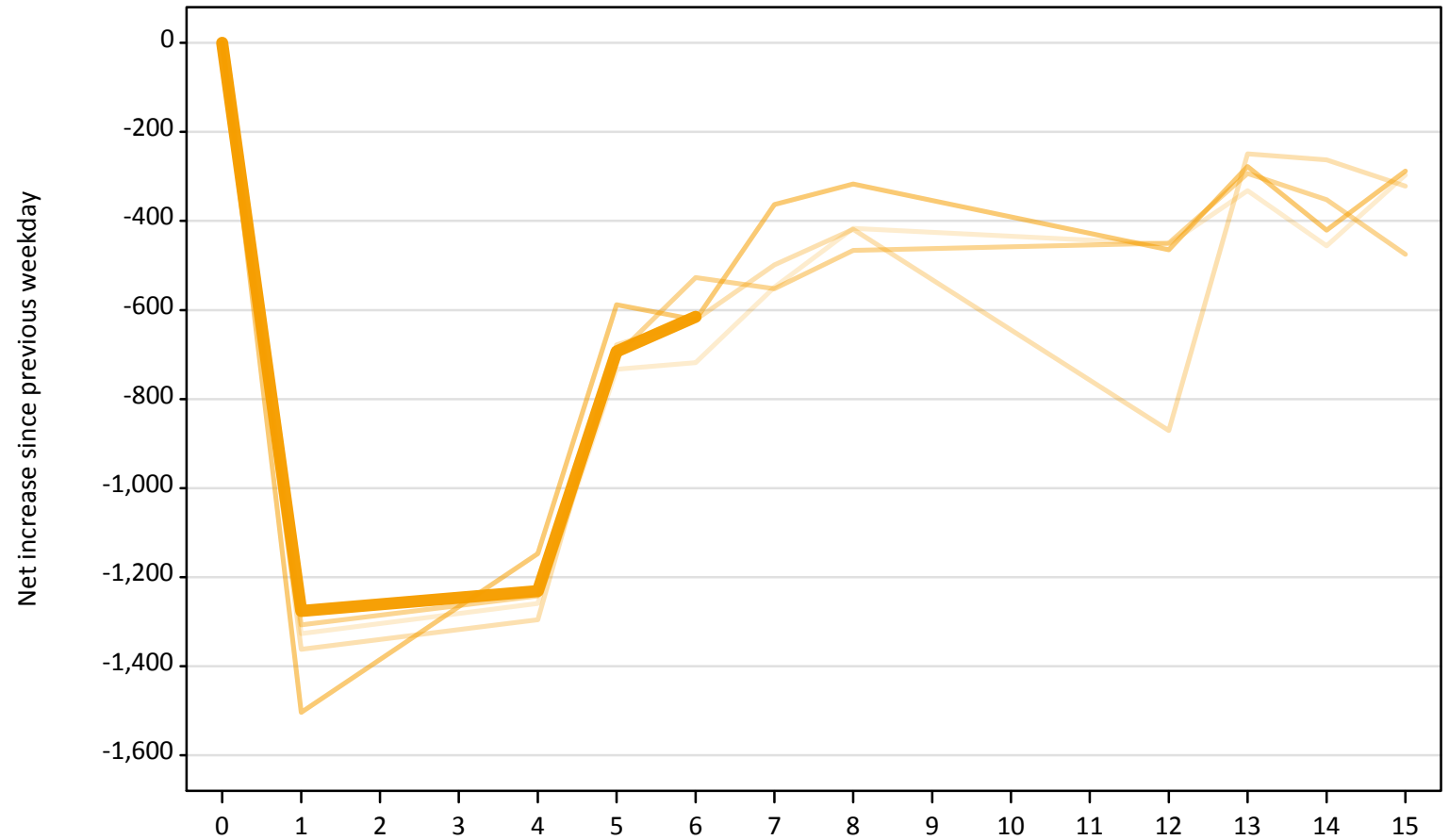
A.21 Placed through Clearing only: Daily net change (from outside the EU)

Net increase since previous weekday (2018 cycle up to 6 days after A level results day)

Applicant status, days since A level results day		2014	2015	2016	2017	2018
Placed through Clearing only	0	0	0	0	0	0
	1	70	80	140	230	280
	4	750	740	810	780	910
	5	310	340	340	330	330
	6	290	260	260	250	330
	7	290	240	210	190	
	8	190	200	200	140	
	12	180	310	110	150	
	13	130	90	100	70	
	14	110	90	90	100	
	15	80	90	90	70	

A.22 Holding Offer: Daily net change (from outside the EU)
Net increase since previous weekday (2018 cycle up to 6 days after A level results day)

- 2014
- 2015
- 2016
- 2017
- 2018**



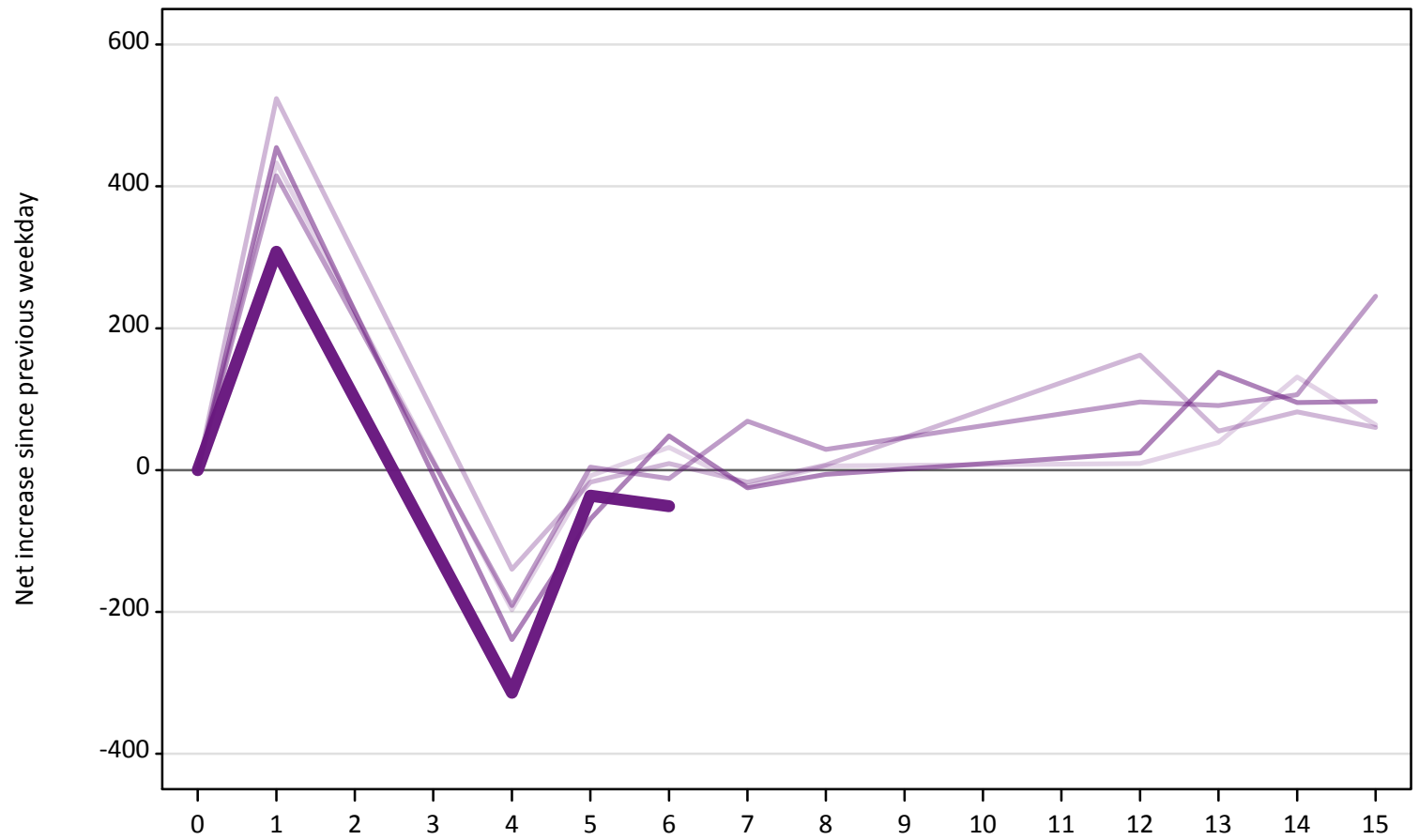
A.23 Holding Offer: Daily net change (from outside the EU)

Net increase since previous weekday (2018 cycle up to 6 days after A level results day)

Applicant status, days since A level results day		2014	2015	2016	2017	2018
Holding Offer	0	0	0	0	0	0
	1	-1,330	-1,360	-1,310	-1,500	-1,280
	4	-1,260	-1,300	-1,240	-1,150	-1,230
	5	-730	-680	-700	-590	-690
	6	-720	-620	-530	-620	-620
	7	-550	-500	-550	-360	
	8	-420	-420	-470	-320	
	12	-450	-870	-450	-470	
	13	-330	-250	-290	-280	
	14	-460	-260	-350	-420	
	15	-300	-320	-480	-290	

A.24 Free to be placed in Clearing: Daily net change (from outside the EU)
Net increase since previous weekday (2018 cycle up to 6 days after A level results day)

- 2014
- 2015
- 2016
- 2017
- 2018



A.25 Free to be placed in Clearing: Daily net change (from outside the EU)

Net increase since previous weekday (2018 cycle up to 6 days after A level results day)

Applicant status, days since A level results day		2014	2015	2016	2017	2018
Free to be placed in Clearing	0	0	0	0	0	0
	1	430	520	420	460	310
	4	-200	-140	-190	-240	-310
	5	-10	-20	0	-70	-40
	6	30	10	-10	50	-50
	7	-20	-20	70	-30	
	8	10	10	30	-10	
	12	10	160	100	20	
	13	40	60	90	140	
	14	130	80	110	100	
	15	60	60	250	100	