

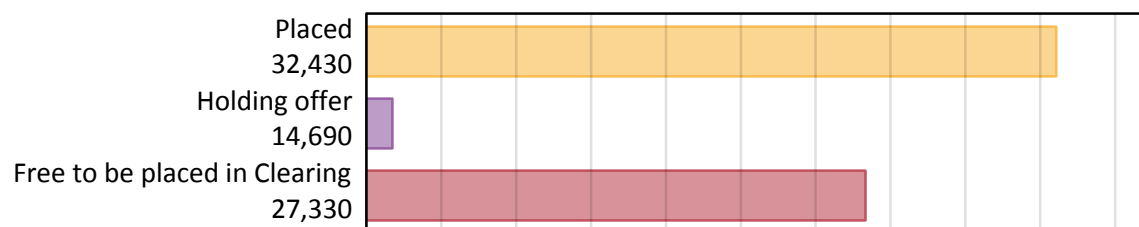
# Daily Clearing Analysis: Overview

Analysis at 00:05 on Friday 17 August 2018 (1 day after A level results day)

## A.1 Applicants by type and status from outside the EU, 2018 cycle

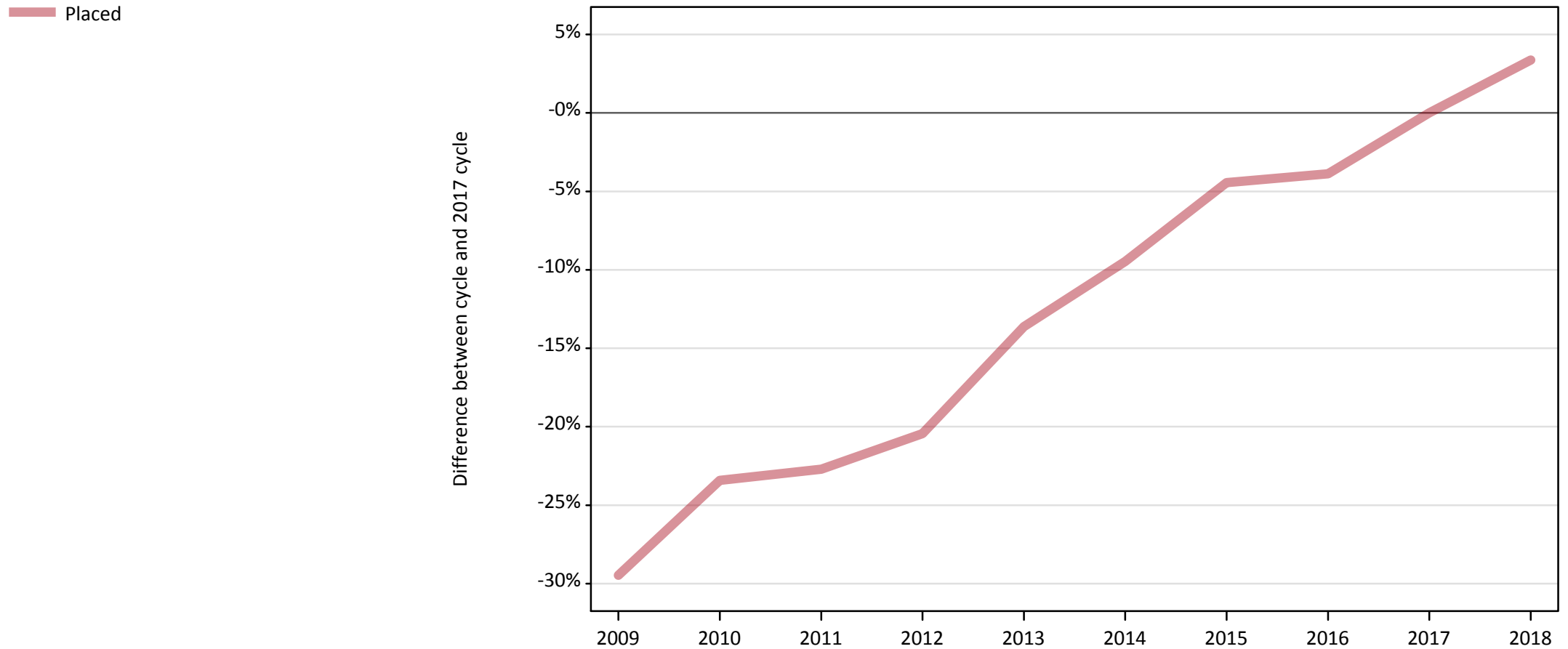
Applicant type	Status	2018
Main scheme	Placed (Clearing)	1,110
	Placed (Adjustment)	10
	Placed (Firm)	26,160
	Placed (Insurance)	3,150
	Placed (Other)	1,660
	Holding offer	14,690
	Free to be placed in Clearing	27,330
Direct to Clearing	Placed (Direct to Clearing)	350
	Other (Direct to Clearing)	770
All applicants	Placed	32,430

## A.2 Summary of applicants who are placed, holding offers or free to be placed in Clearing ( outside the EU )



### A.3 All placed applicants from outside the EU: 1 day after A level results day

All placed applicants: difference between cycle and 2017 cycle



Note: The percentage change is not plotted in the above chart for groups with fewer than 30 placed applicants in any one cycle.

#### A.4 All placed applicants from outside the EU: 1 day after A level results day

All placed applicants: applicants at 1 day after A level results day

Applicant type	Status	2009	2010	2011	2012	2013	2014	2015	2016	2017	2018
All applicants	Placed	22,130	24,030	24,250	24,960	27,100	28,410	29,980	30,160	31,380	32,430

#### A.5 All placed applicants from outside the EU: 1 day after A level results day

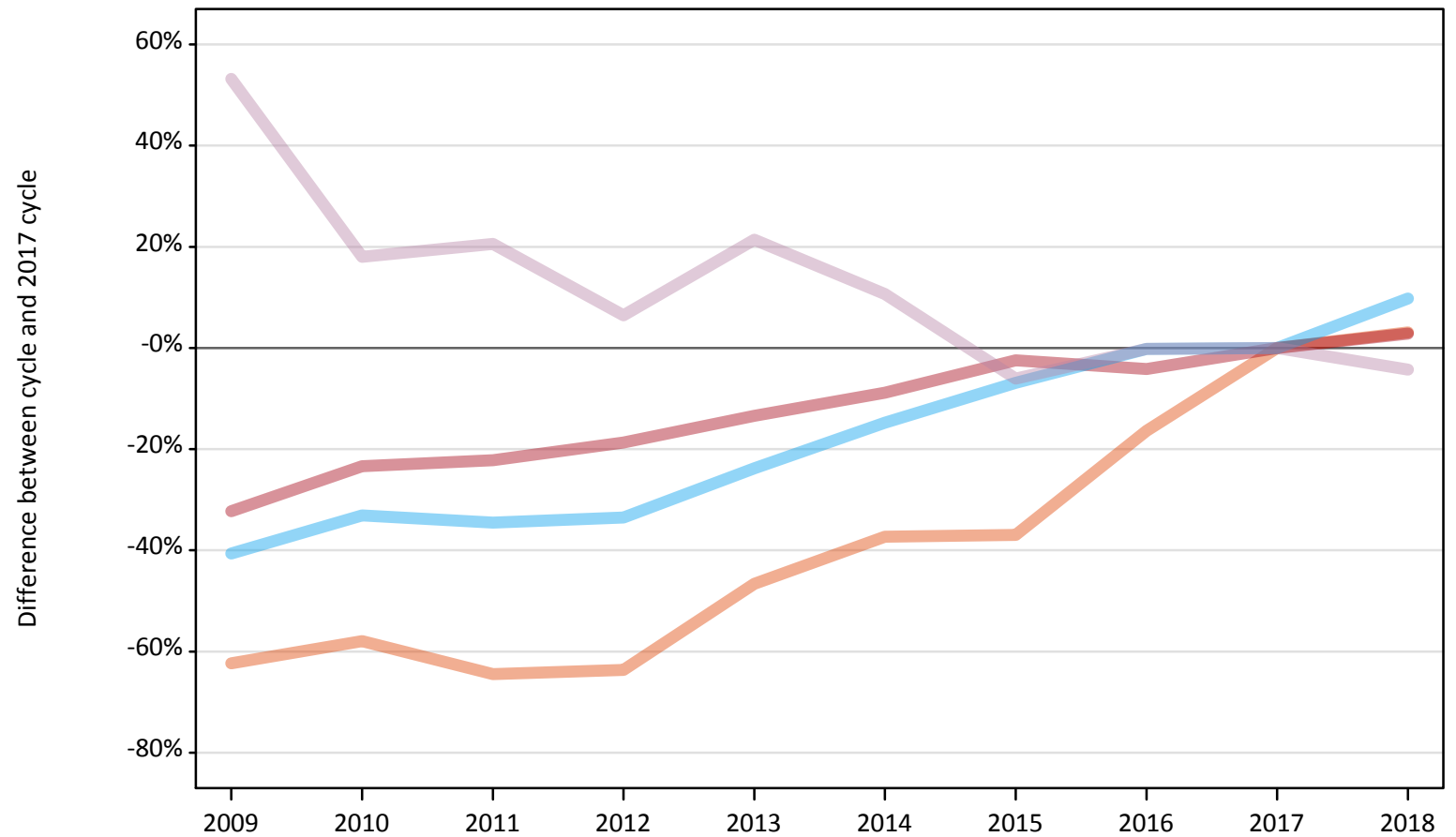
All placed applicants: difference between cycle and 2017 cycle

Applicant type	Status	2009	2010	2011	2012	2013	2014	2015	2016	2017	2018
All applicants	Placed	-29%	-23%	-23%	-20%	-14%	-9%	-4%	-4%	0%	3%

Note: The percentage change is not recorded in the above table for groups with fewer than 10 placed applicants in that cycle or in the 2017 cycle.

**A.6 Placed main scheme applicants from outside the EU: 1 day after A level results day**  
All Main scheme placed routes (excluding Adjustment): difference between cycle and 2017 cycle

- Placed (Clearing)
- Placed (Firm)
- Placed (Insurance)
- Placed (Other)



Note: The percentage change is not plotted in the above chart for groups with fewer than 30 placed applicants in any one cycle.

### A.7 Placed main scheme applicants from outside the EU: 1 day after A level results day

All Main scheme placed routes (excluding Adjustment): applicants at 1 day after A level results day

Applicant type	Status	2009	2010	2011	2012	2013	2014	2015	2016	2017	2018
Main scheme	Placed (Clearing)	410	450	380	390	570	670	680	900	1,080	1,110
	Placed (Firm)	17,240	19,500	19,800	20,690	22,040	23,190	24,830	24,380	25,440	26,160
	Placed (Insurance)	1,700	1,920	1,880	1,910	2,180	2,440	2,670	2,860	2,870	3,150
	Placed (Other)	2,660	2,050	2,090	1,850	2,110	1,920	1,630	1,730	1,740	1,660

### A.8 Placed main scheme applicants from outside the EU: 1 day after A level results day

All Main scheme placed routes (excluding Adjustment): difference between cycle and 2017 cycle

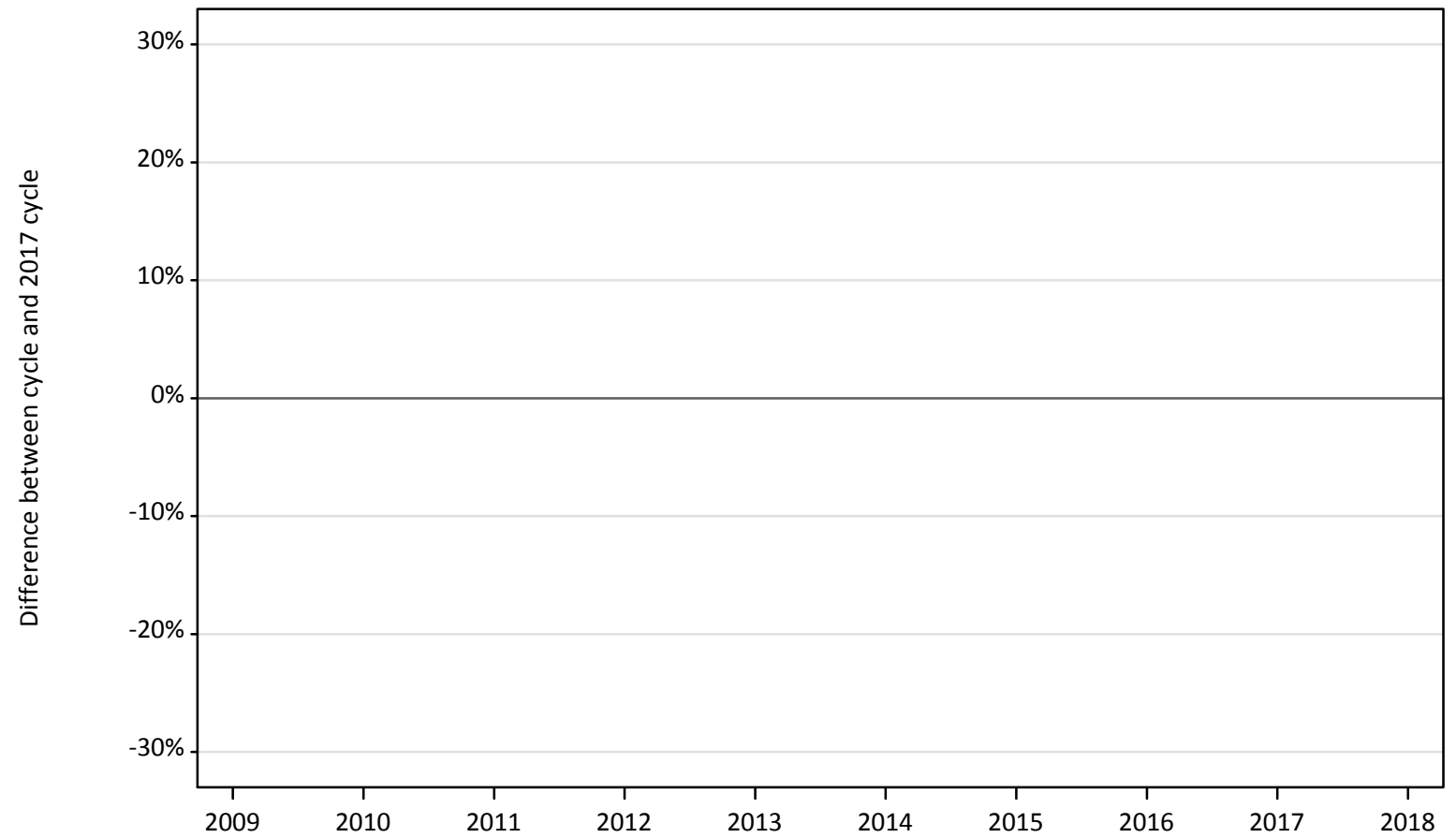
Applicant type	Status	2009	2010	2011	2012	2013	2014	2015	2016	2017	2018
Main scheme	Placed (Clearing)	-62%	-58%	-64%	-64%	-47%	-37%	-37%	-16%	0%	3%
	Placed (Firm)	-32%	-23%	-22%	-19%	-13%	-9%	-2%	-4%	0%	3%
	Placed (Insurance)	-41%	-33%	-35%	-33%	-24%	-15%	-7%	-0%	0%	10%
	Placed (Other)	53%	18%	21%	6%	21%	11%	-6%	-0%	0%	-4%

Note: The percentage change is not recorded in the above table for groups with fewer than 10 placed applicants in that cycle or in the 2017 cycle.

## A.9 Main scheme applicants placed through adjustment: 1 day after A level results day

Placed through adjustment: difference between cycle and 2017 cycle

Placed (Adjustment)



Note: The percentage change is not plotted in the above chart for groups with fewer than 30 placed applicants in any one cycle.

### A.10 Main scheme applicants placed through adjustment: 1 day after A level results day

Placed through adjustment: applicants at 1 day after A level results day

Applicant type	Status	2009	2010	2011	2012	2013	2014	2015	2016	2017	2018
Main scheme	Placed (Adjustment)	0	0	0	0	10	30	10	10	10	10

### A.11 Main scheme applicants placed through adjustment: 1 day after A level results day

Placed through adjustment: difference between cycle and 2017 cycle

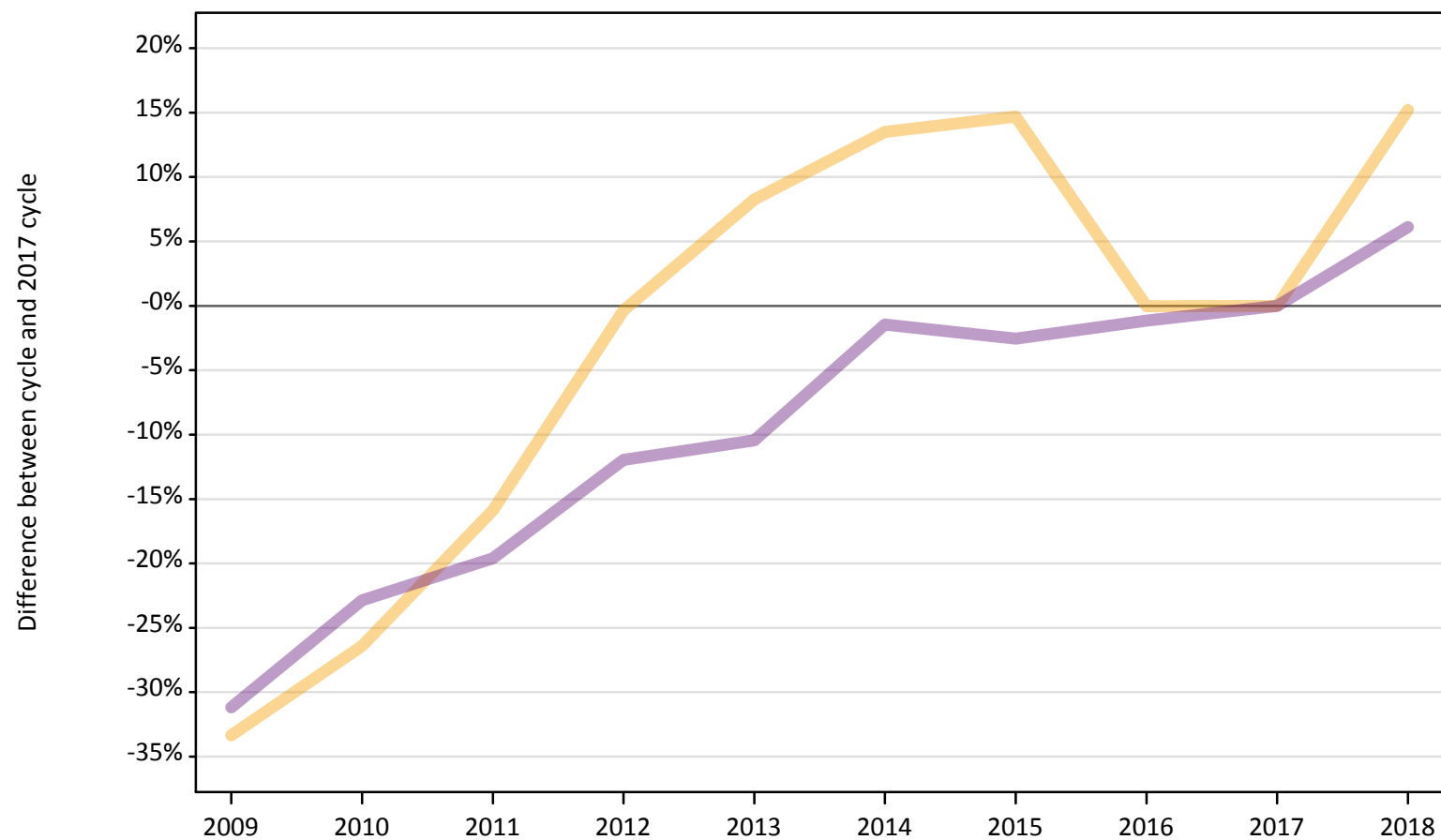
Applicant type	Status	2009	2010	2011	2012	2013	2014	2015	2016	2017	2018
Main scheme	Placed (Adjustment)					20%	190%	30%	0%	0%	-10%

Note: The percentage change is not recorded in the above table for groups with fewer than 10 placed applicants in that cycle or in the 2017 cycle.

## A.12 Main scheme applicants not currently placed from outside the EU: 1 day after A level results day

Applicants in unplaced states: difference between cycle and 2017 cycle

— Holding offer  
— Free to be placed in Clearing



Note: The percentage change is not plotted in the above chart for groups with fewer than 30 unplaced applicants in any one cycle.



**A.13 Main scheme applicants not currently placed from outside the EU: 1 day after A level results day**

Applicants in unplaced states: applicants at 1 day after A level results day

Applicant type	Status	2009	2010	2011	2012	2013	2014	2015	2016	2017	2018
Main scheme	Holding offer	8,500	9,380	10,730	12,700	13,800	14,470	14,620	12,750	12,750	14,690
	Free to be placed in Clearing	17,720	19,870	20,710	22,670	23,070	25,380	25,100	25,460	25,760	27,330

**A.14 Main scheme applicants not currently placed from outside the EU: 1 day after A level results day**

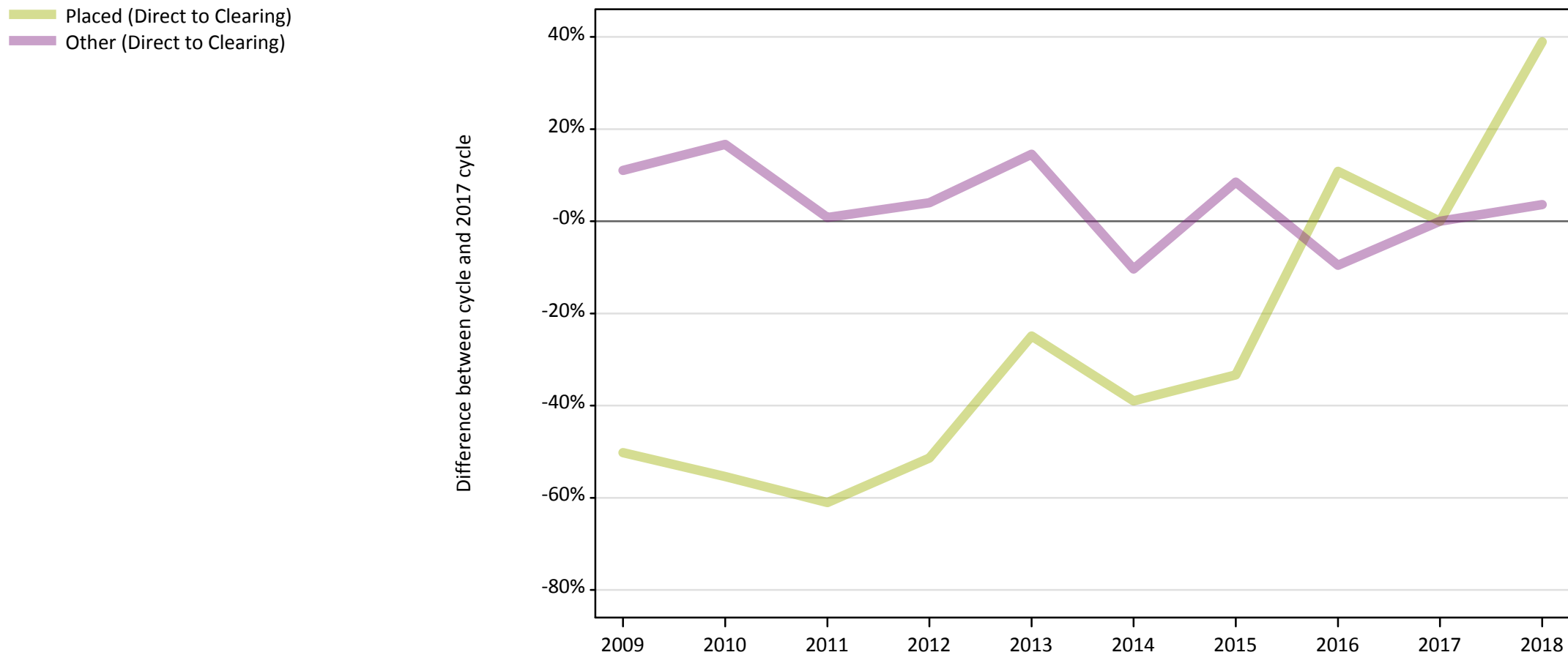
Applicants in unplaced states: difference between cycle and 2017 cycle

Applicant type	Status	2009	2010	2011	2012	2013	2014	2015	2016	2017	2018
Main scheme	Holding offer	-33%	-26%	-16%	-0%	8%	13%	15%	-0%	0%	15%
	Free to be placed in Clearing	-31%	-23%	-20%	-12%	-10%	-1%	-3%	-1%	0%	6%

Note: The percentage change is not recorded in the above table for groups with fewer than 10 unplaced applicants in that cycle or in the 2017 cycle.

### A.15 Direct to Clearing applicants from outside the EU: 1 day after A level results day

Direct to Clearing: difference between cycle and 2017 cycle



Note: The percentage change is not plotted in the above chart for groups with fewer than 30 placed applicants in any one cycle.

### A.16 Direct to Clearing applicants from outside the EU: 1 day after A level results day

Direct to Clearing 1 day after A level results day

Applicant type	Status	2009	2010	2011	2012	2013	2014	2015	2016	2017	2018
Direct to Clearing	Placed (Direct to Clearing)	120	110	100	120	190	150	170	280	250	350
	Other (Direct to Clearing)	830	870	750	770	850	670	810	670	740	770

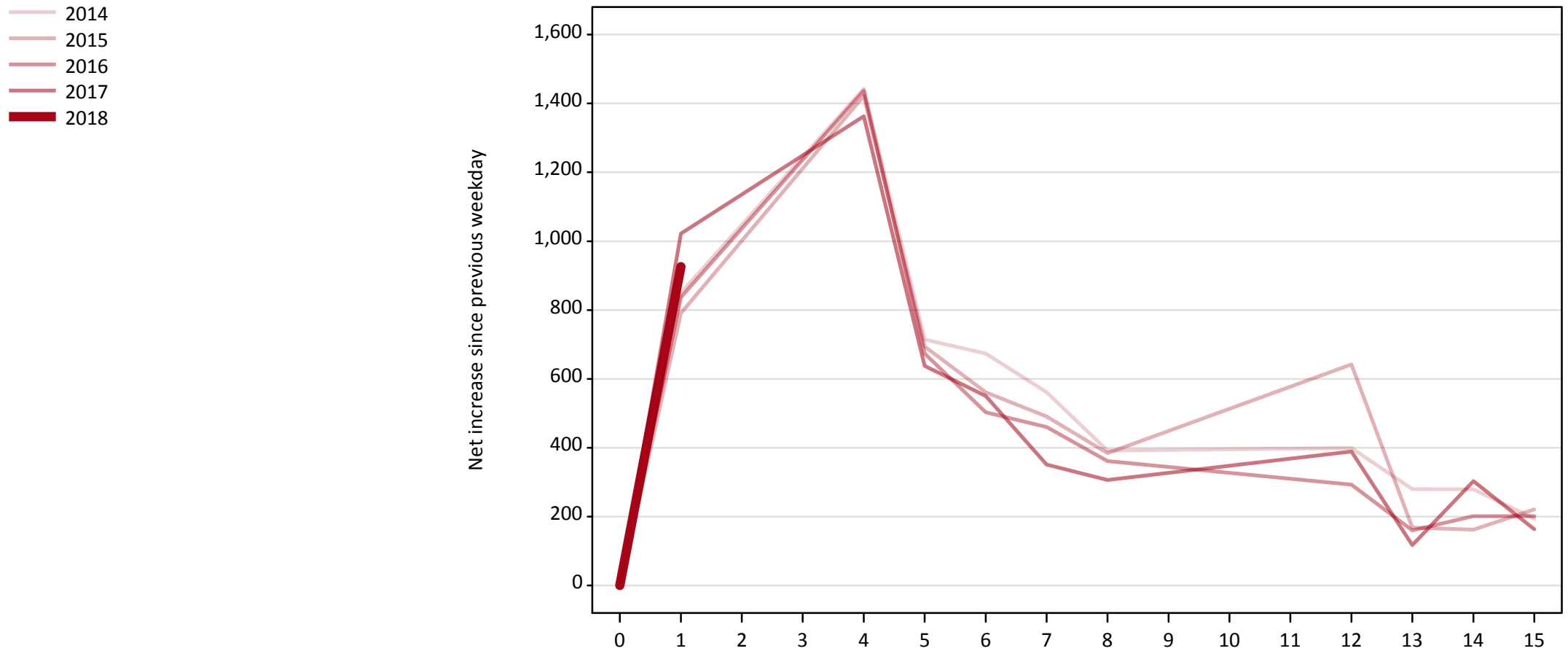
### A.17 Direct to Clearing applicants from outside the EU: 1 day after A level results day

Direct to Clearing: difference between cycle and 2017 cycle

Applicant type	Status	2009	2010	2011	2012	2013	2014	2015	2016	2017	2018
Direct to Clearing	Placed (Direct to Clearing)	-50%	-55%	-61%	-51%	-25%	-39%	-33%	11%	0%	39%
	Other (Direct to Clearing)	11%	17%	1%	4%	15%	-10%	8%	-10%	0%	4%

Note: The percentage change is not recorded in the above table for groups with fewer than 10 placed applicants in that cycle or in the 2017 cycle.

**A.18 All Placed: Daily net change (from outside the EU)**  
Net increase since previous weekday (2018 cycle up to 1 day after A level results day)



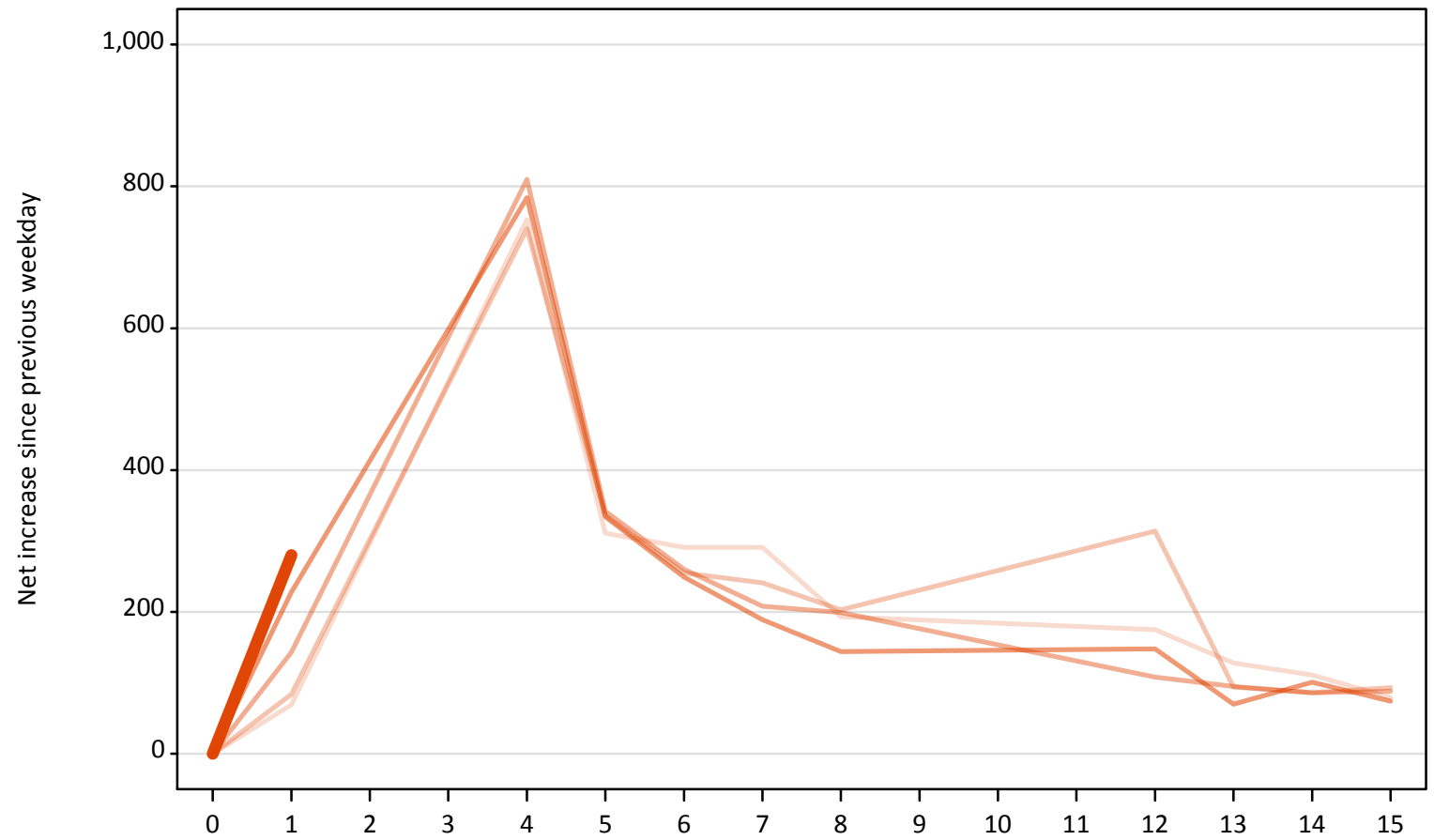
**A.19 All Placed: Daily net change (from outside the EU)**

Net increase since previous weekday (2018 cycle up to 1 day after A level results day)

Applicant status, days since A level results day		2014	2015	2016	2017	2018
All Placed	0	0	0	0	0	0
	1	850	790	840	1,020	930
	4	1,440	1,420	1,440	1,360	
	5	710	690	670	640	
	6	670	560	500	550	
	7	560	490	460	350	
	8	390	380	360	310	
	12	400	640	290	390	
	13	280	170	160	120	
	14	280	160	200	300	
	15	190	220	200	160	

**A.20 Placed through Clearing only: Daily net change (from outside the EU)**  
Net increase since previous weekday (2018 cycle up to 1 day after A level results day)

- 2014
- 2015
- 2016
- 2017
- 2018**

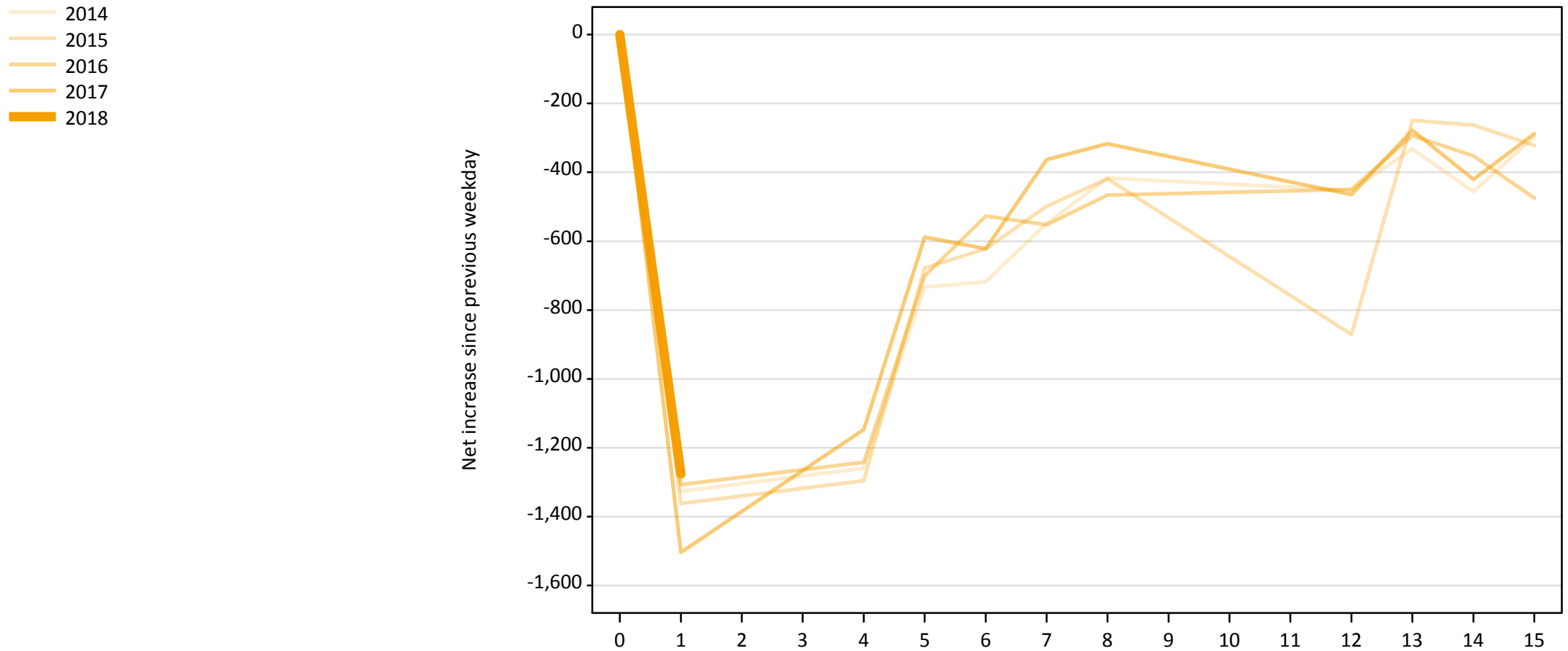


### A.21 Placed through Clearing only: Daily net change (from outside the EU)

Net increase since previous weekday (2018 cycle up to 1 day after A level results day)

Applicant status, days since A level results day		2014	2015	2016	2017	2018
Placed through Clearing only	0	0	0	0	0	0
	1	70	80	140	230	280
	4	750	740	810	780	
	5	310	340	340	330	
	6	290	260	260	250	
	7	290	240	210	190	
	8	190	200	200	140	
	12	180	310	110	150	
	13	130	90	100	70	
	14	110	90	90	100	
	15	80	90	90	70	

**A.22 Holding Offer: Daily net change (from outside the EU)**  
Net increase since previous weekday (2018 cycle up to 1 day after A level results day)





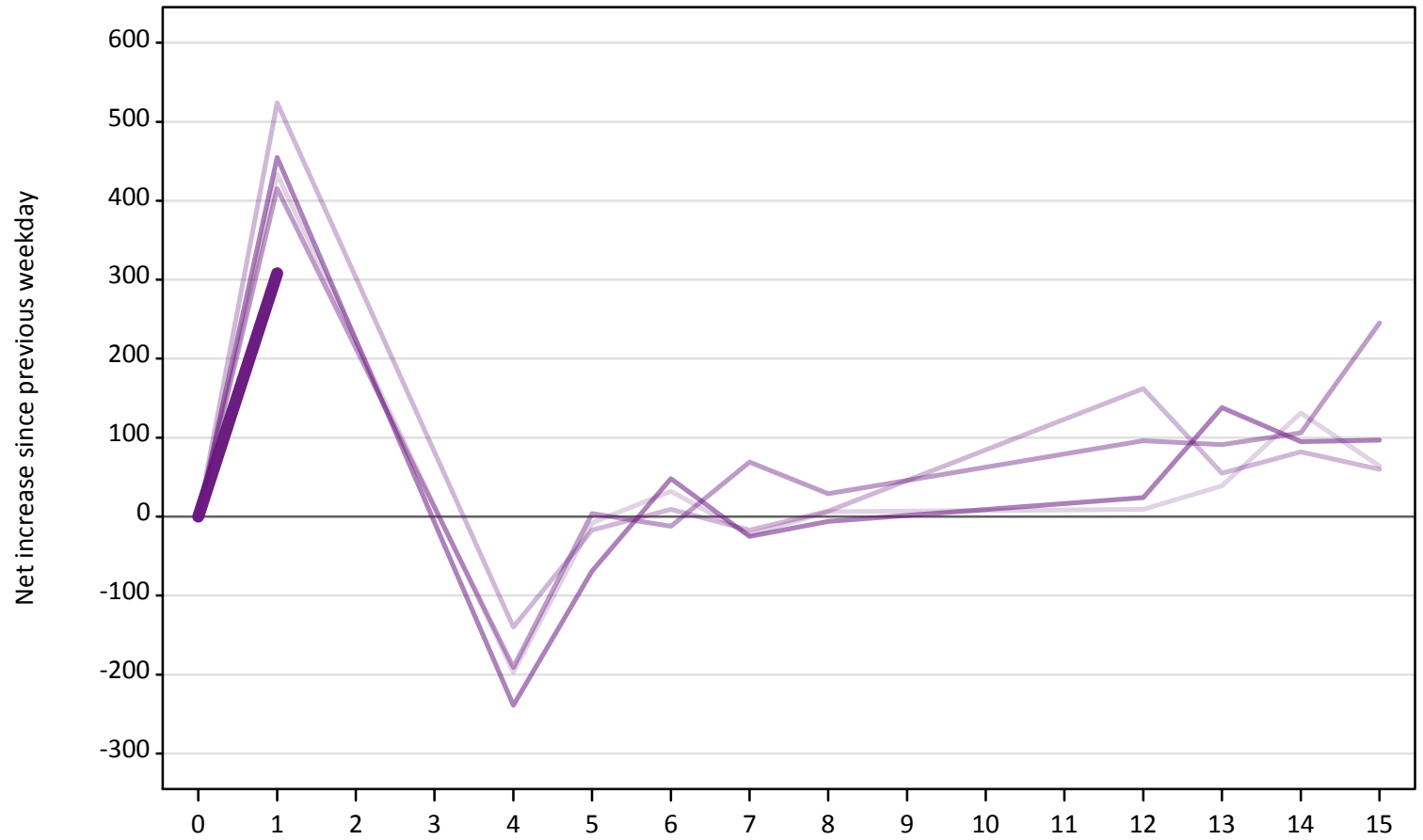
### A.23 Holding Offer: Daily net change (from outside the EU)

Net increase since previous weekday (2018 cycle up to 1 day after A level results day)

Applicant status, days since A level results day		2014	2015	2016	2017	2018
Holding Offer	0	0	0	0	0	0
	1	-1,330	-1,360	-1,310	-1,500	-1,280
	4	-1,260	-1,300	-1,240	-1,150	
	5	-730	-680	-700	-590	
	6	-720	-620	-530	-620	
	7	-550	-500	-550	-360	
	8	-420	-420	-470	-320	
	12	-450	-870	-450	-470	
	13	-330	-250	-290	-280	
	14	-460	-260	-350	-420	
	15	-300	-320	-480	-290	

**A.24 Free to be placed in Clearing: Daily net change (from outside the EU)**  
Net increase since previous weekday (2018 cycle up to 1 day after A level results day)

- 2014
- 2015
- 2016
- 2017
- 2018



**A.25 Free to be placed in Clearing: Daily net change (from outside the EU)**

Net increase since previous weekday (2018 cycle up to 1 day after A level results day)

Applicant status, days since A level results day		2014	2015	2016	2017	2018
Free to be placed in Clearing	0	0	0	0	0	0
	1	430	520	420	460	310
	4	-200	-140	-190	-240	
	5	-10	-20	0	-70	
	6	30	10	-10	50	
	7	-20	-20	70	-30	
	8	10	10	30	-10	
	12	10	160	100	20	
	13	40	60	90	140	
	14	130	80	110	100	
	15	60	60	250	100	