

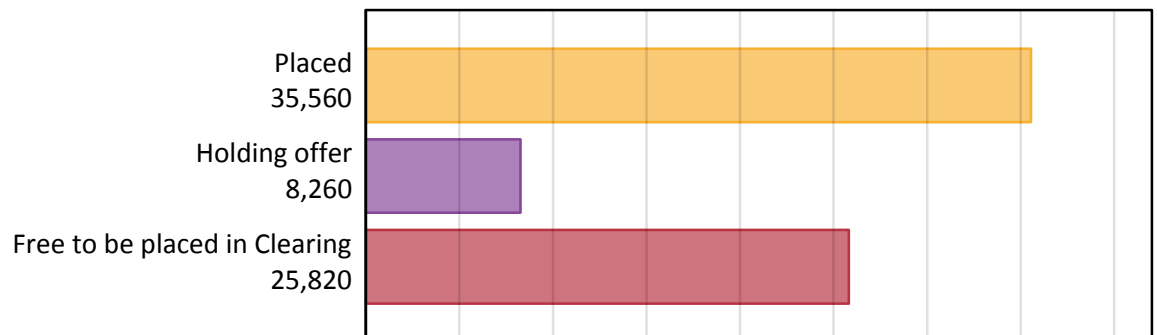
Daily Clearing Analysis: Overview

Analysis at 00:05 on Friday 1 September 2017 (15 days after A level results day)

A.1 Applicants by type and status from outside the EU, 2017 cycle

Applicant type	Status	2017
Main scheme	Placed (Clearing)	2,920
	Placed (Adjustment)	50
	Placed (Firm)	26,600
	Placed (Insurance)	3,490
	Placed (Other)	2,000
	Holding offer	8,260
	Free to be placed in Clearing	25,820
Direct to Clearing	Placed (Direct to Clearing)	500
	Other (Direct to Clearing)	750
All applicants	Placed	35,560

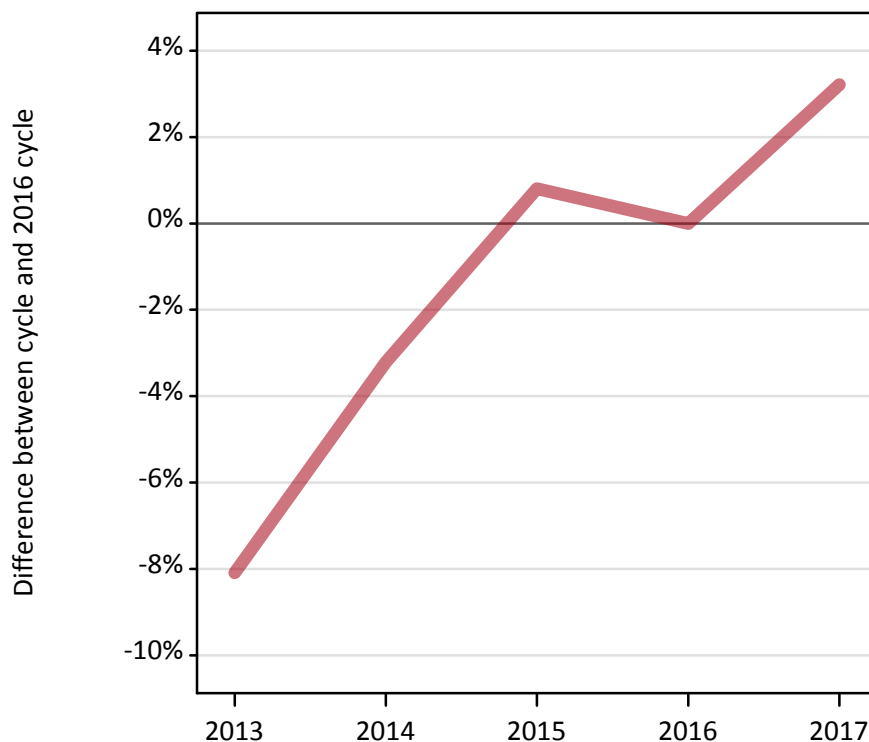
A.2 Summary of applicants who are placed, holding offers or free to be placed in Clearing (outside the EU)



A.3 All placed applicants from outside the EU: 15 days after A level results day

All placed applicants: difference between cycle and 2016 cycle

Placed



A.4 All placed applicants from outside the EU: 15 days after A level results day

All placed applicants: applicants at 15 days after A level results day

Applicant type	Status	2013	2014	2015	2016	2017
All applicants	Placed	31,660	33,340	34,730	34,450	35,560

A.5 All placed applicants from outside the EU: 15 days after A level results day

All placed applicants: difference between cycle and 2016 cycle

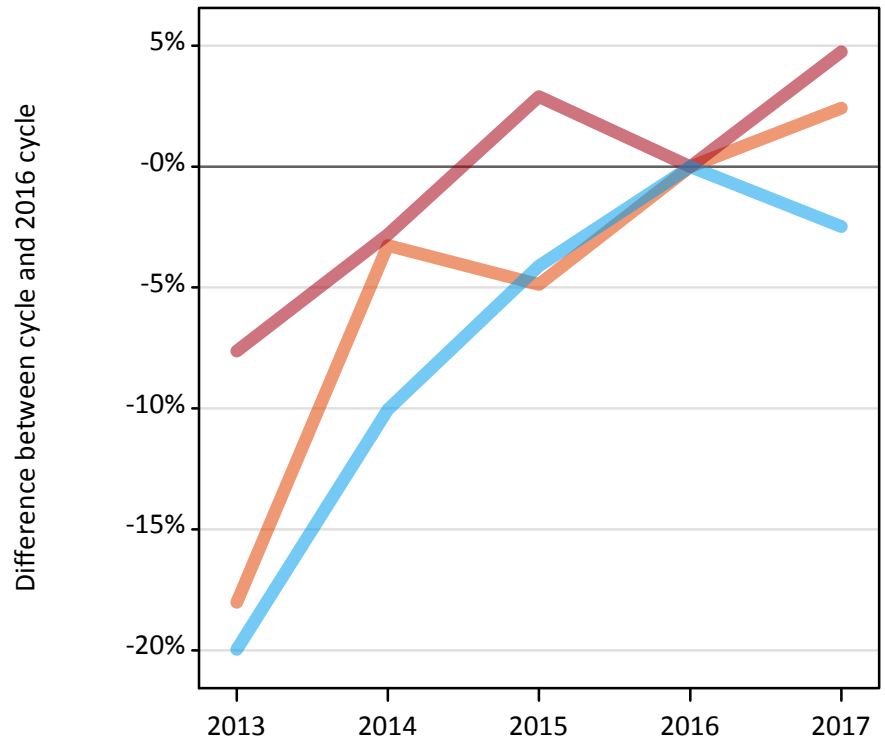
Applicant type	Status	2013	2014	2015	2016	2017
All applicants	Placed	-8%	-3%	1%	0%	3%

Note: Percentage changes are not plotted for lines with, on average, fewer than 30 applicants per year. As a result, lines for some, or all, of the states may be missing.

A.6 Placed main scheme applicants from outside the EU: 15 days after A level results day

Selected placed routes: difference between cycle and 2016 cycle

- Placed (Clearing)
- Placed (Firm)
- Placed (Insurance)



A.7 Placed main scheme applicants from outside the EU: 15 days after A level results day

All Main scheme placed routes (excluding Adjustment): applicants at 15 days after A level results day

Applicant type	Status	2013	2014	2015	2016	2017
Main scheme	Placed (Clearing)	2,340	2,760	2,710	2,850	2,920
	Placed (Firm)	23,460	24,680	26,130	25,390	26,600
	Placed (Insurance)	2,870	3,220	3,440	3,580	3,490
	Placed (Other)	2,500	2,200	1,890	2,040	2,000

A.8 Placed main scheme applicants from outside the EU: 15 days after A level results day

Selected placed routes: difference between cycle and 2016 cycle

Applicant type	Status	2013	2014	2015	2016	2017
Main scheme	Placed (Clearing)	-18%	-3%	-5%	0%	2%
	Placed (Firm)	-8%	-3%	3%	0%	5%
	Placed (Insurance)	-20%	-10%	-4%	0%	-2%

Note: Percentage changes are not plotted for lines with, on average, fewer than 30 applicants per year. As a result, lines for some, or all, of the states may be missing.

A.9 Main scheme applicants placed through adjustment: 15 days after A level results day

Placed through adjustment: difference between cycle and 2016 cycle

Placed (Adjustment)



A.10 Main scheme applicants placed through adjustment: 15 days after A level results day

Placed through adjustment: applicants at 15 days after A level results day

Applicant type	Status	2013	2014	2015	2016	2017
Main scheme	Placed (Adjustment)	60	90	70	70	50

A.11 Main scheme applicants placed through adjustment: 15 days after A level results day

Placed through adjustment: difference between cycle and 2016 cycle

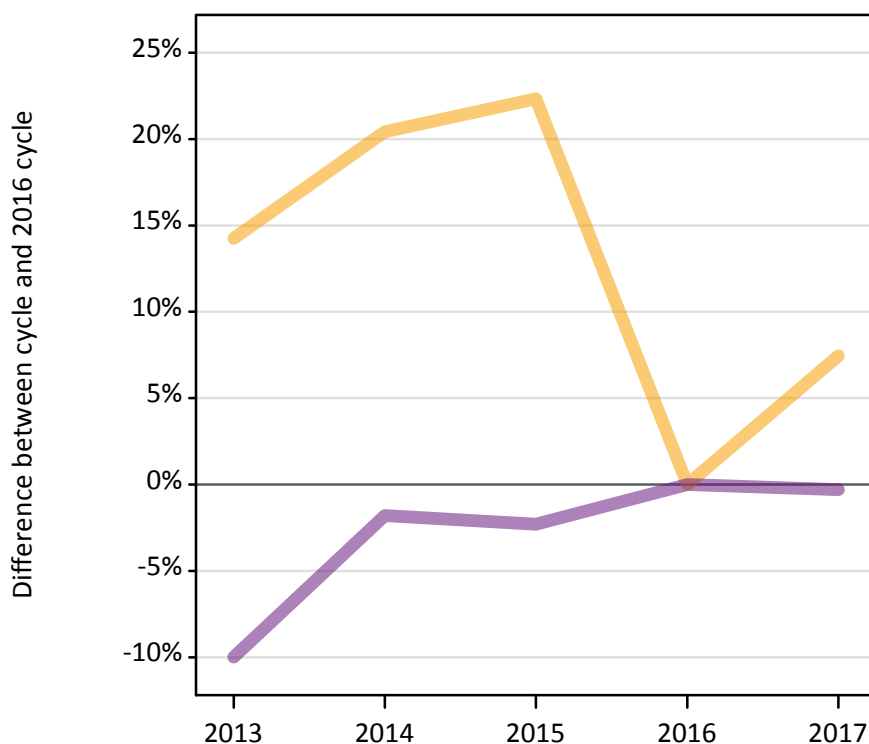
Applicant type	Status	2013	2014	2015	2016	2017
Main scheme	Placed (Adjustment)	-9%	30%	9%	0%	-26%

Note: Percentage changes are not plotted for lines with, on average, fewer than 30 applicants per year. As a result, lines for some, or all, of the states may be missing.

A.12 Main scheme applicants not currently placed from outside the EU: 15 days after A level results day

Applicants in unplaced states: difference between cycle and 2016 cycle

— Holding offer
— Free to be placed in Clearing



A.13 Main scheme applicants not currently placed from outside the EU: 15 days after A level results day

Applicants in unplaced states: applicants at 15 days after A level results day

Applicant type	Status	2013	2014	2015	2016	2017
Main scheme	Holding offer	8,780	9,260	9,400	7,690	8,260
	Free to be placed in Clearing	23,310	25,440	25,300	25,900	25,820

A.14 Main scheme applicants not currently placed from outside the EU: 15 days after A level results day

Applicants in unplaced states: difference between cycle and 2016 cycle

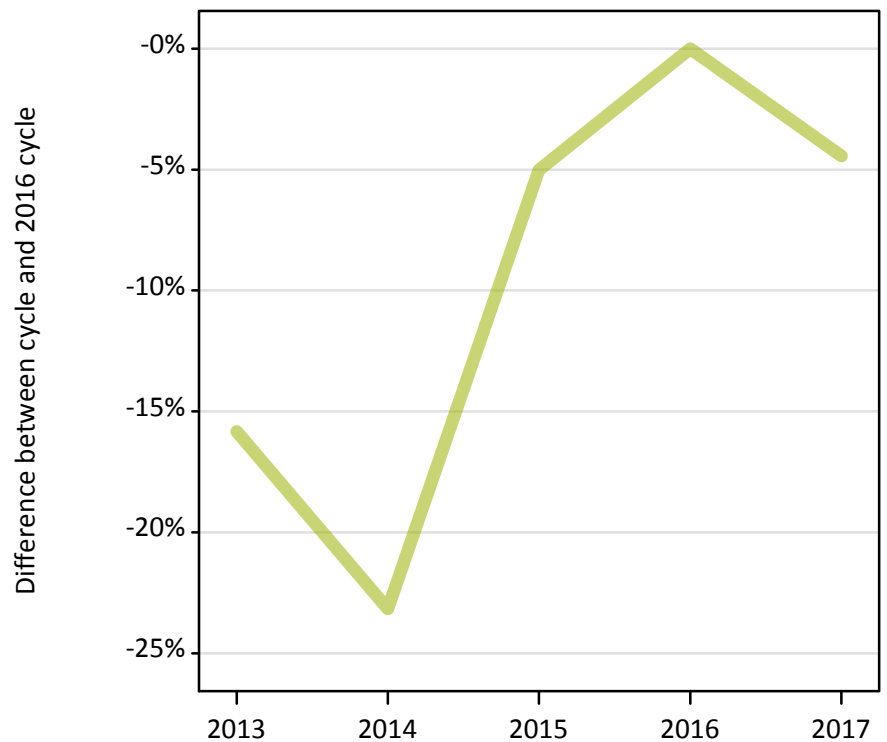
Applicant type	Status	2013	2014	2015	2016	2017
Main scheme	Holding offer	14%	20%	22%	0%	7%
	Free to be placed in Clearing	-10%	-2%	-2%	0%	-0%

Note: Percentage changes are not plotted for lines with, on average, fewer than 30 applicants per year. As a result, lines for some, or all, of the states may be missing.

A.15 Direct to Clearing applicants from outside the EU: 15 days after A level results day

Placed (Direct to Clearing): difference between cycle and 2016 cycle

Placed (Direct to Clearing)



A.16 Direct to Clearing applicants from outside the EU: 15 days after A level results day

Direct to Clearing 15 days after A level results day

Applicant type	Status	2013	2014	2015	2016	2017
Direct to Clearing	Placed (Direct to Clearing)	440	400	490	520	500
	Other (Direct to Clearing)	850	720	810	680	750

A.17 Direct to Clearing applicants from outside the EU: 15 days after A level results day

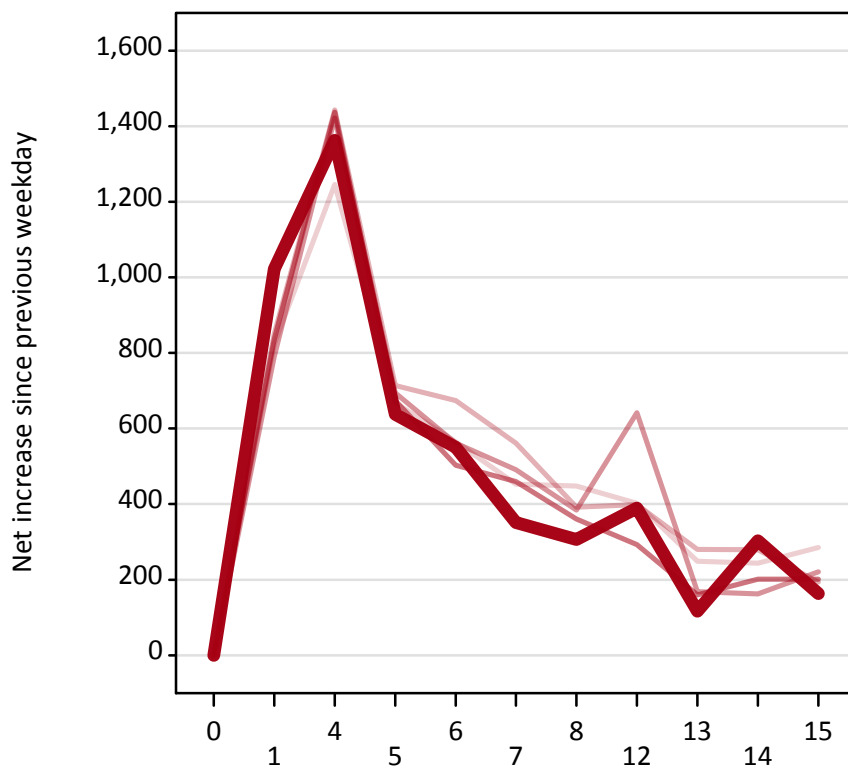
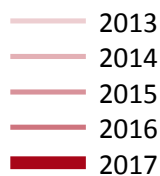
Placed (Direct to Clearing): difference between cycle and 2016 cycle

Applicant type	Status	2013	2014	2015	2016	2017
Direct to Clearing	Placed (Direct to Clearing)	-16%	-23%	-5%	0%	-4%

Note: Percentage changes are not plotted for lines with, on average, fewer than 30 applicants per year. As a result, lines for some, or all, of the states may be missing.

A.18 All Placed: Daily net change (from outside the EU)

Net increase since previous weekday (2017 cycle up to 15 days after A level results day)



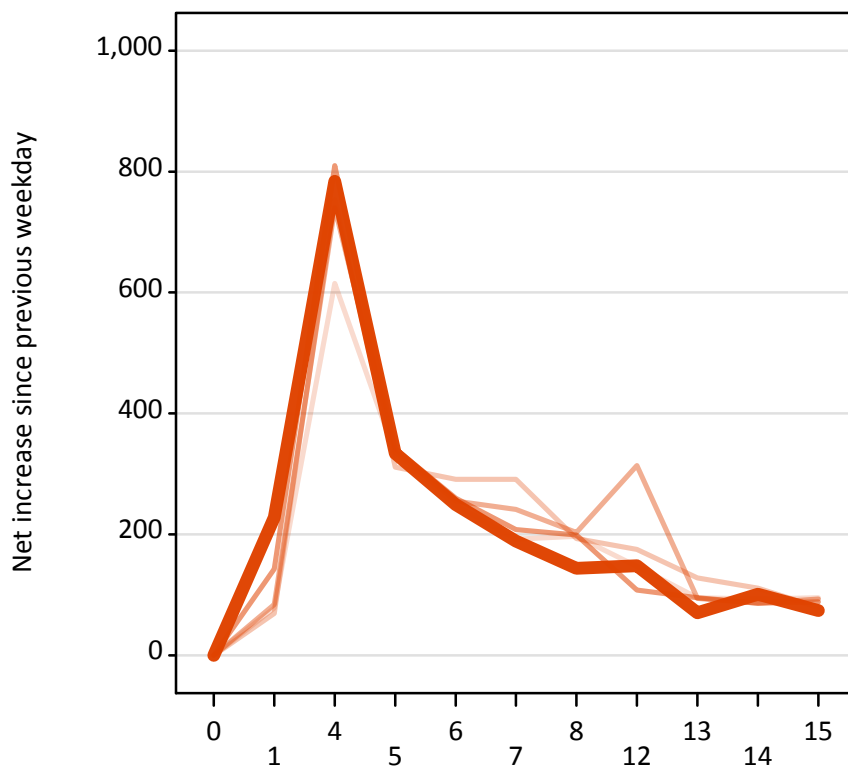
A.19 All Placed: Daily net change (from outside the EU)

Net increase since previous weekday (2017 cycle up to 15 days after A level results day)

Applicant status, days since A level results day		2013	2014	2015	2016	2017
All Placed	0	0	0	0	0	0
	1	820	850	790	840	1,020
	4	1,250	1,440	1,420	1,440	1,360
	5	670	710	690	670	640
	6	570	670	560	500	550
	7	450	560	490	460	350
	8	450	390	380	360	310
	12	400	400	640	290	390
	13	250	280	170	160	120
	14	240	280	160	200	300
	15	290	190	220	200	160

A.20 Placed through Clearing only: Daily net change (from outside the EU)

Net increase since previous weekday (2017 cycle up to 15 days after A level results day)



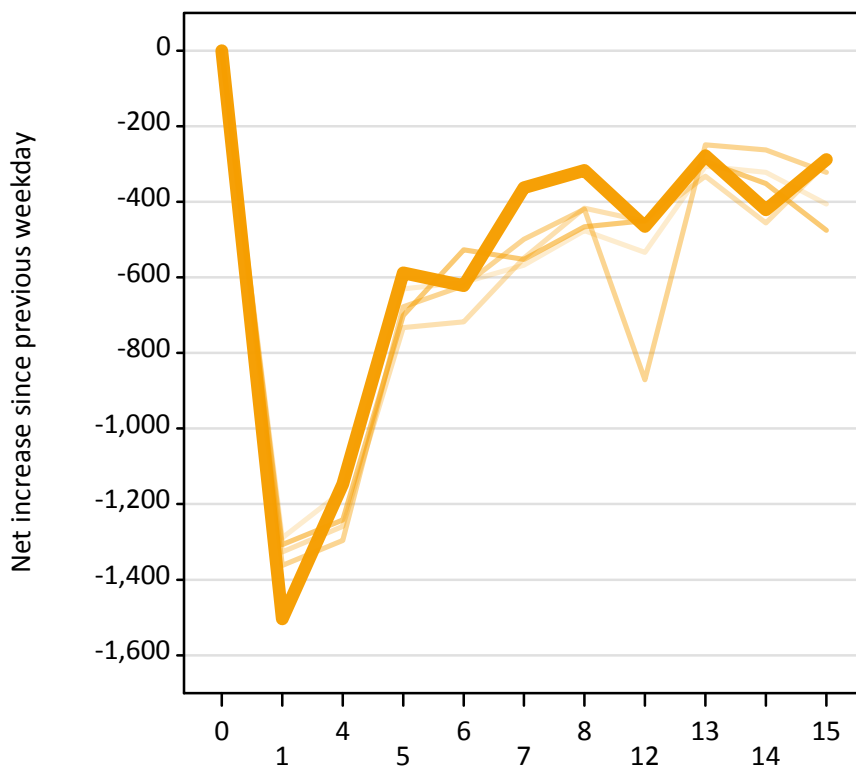
A.21 Placed through Clearing only: Daily net change (from outside the EU)

Net increase since previous weekday (2017 cycle up to 15 days after A level results day)

Applicant status, days since A level results day		2013	2014	2015	2016	2017
Placed through Clearing only	0	0	0	0	0	0
	1	80	70	80	140	230
	4	620	750	740	810	780
	5	330	310	340	340	330
	6	250	290	260	260	250
	7	190	290	240	210	190
	8	200	190	200	200	140
	12	150	180	310	110	150
	13	100	130	90	100	70
	14	90	110	90	90	100
	15	100	80	90	90	70

A.22 Holding Offer: Daily net change (from outside the EU)

Net increase since previous weekday (2017 cycle up to 15 days after A level results day)



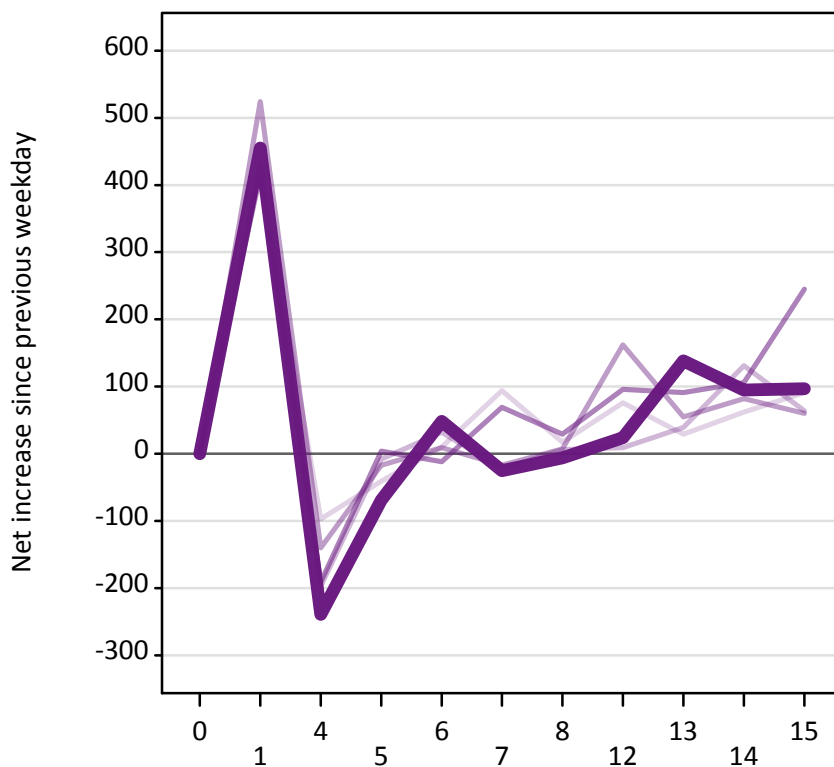
A.23 Holding Offer: Daily net change (from outside the EU)

Net increase since previous weekday (2017 cycle up to 15 days after A level results day)

Applicant status, days since A level results day		2013	2014	2015	2016	2017
Holding Offer	0	0	0	0	0	0
	1	-1,290	-1,330	-1,360	-1,310	-1,500
	4	-1,170	-1,260	-1,300	-1,240	-1,150
	5	-630	-730	-680	-700	-590
	6	-610	-720	-620	-530	-620
	7	-570	-550	-500	-550	-360
	8	-480	-420	-420	-470	-320
	12	-530	-450	-870	-450	-470
	13	-310	-330	-250	-290	-280
	14	-320	-460	-260	-350	-420
	15	-410	-300	-320	-480	-290

A.24 Free to be placed in Clearing: Daily net change (from outside the EU)

Net increase since previous weekday (2017 cycle up to 15 days after A level results day)



A.25 Free to be placed in Clearing: Daily net change (from outside the EU)

Net increase since previous weekday (2017 cycle up to 15 days after A level results day)

Applicant status, days since A level results day		2013	2014	2015	2016	2017
Free to be placed in Clearing	0	0	0	0	0	0
	1	430	430	520	420	460
	4	-100	-200	-140	-190	-240
	5	-40	-10	-20	0	-70
	6	10	30	10	-10	50
	7	90	-20	-20	70	-30
	8	20	10	10	30	-10
	12	80	10	160	100	20
	13	30	40	60	90	140
	14	60	130	80	110	100
	15	90	60	60	250	100