

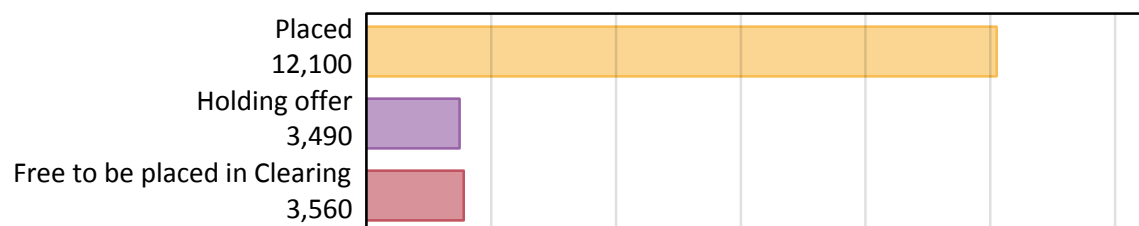
Daily Clearing Analysis: Overview

Analysis at 00:05 on Monday 20 August 2018 (4 days after A level results day)

A.1 Applicants by type and status from Northern Ireland, 2018 cycle

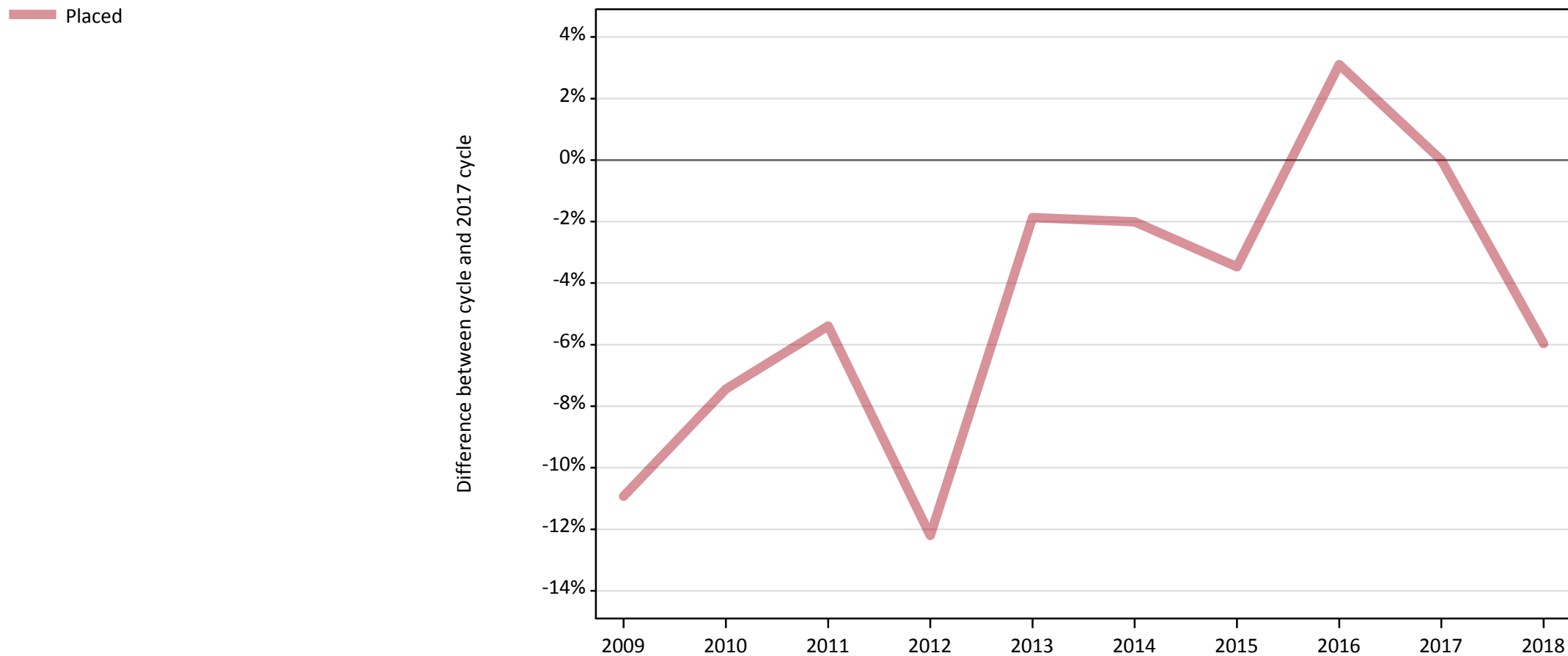
| Applicant type | Status | 2018 |
|--------------------|-------------------------------|--------|
| Main scheme | Placed (Clearing) | 350 |
| | Placed (Adjustment) | 20 |
| | Placed (Firm) | 10,680 |
| | Placed (Insurance) | 900 |
| | Placed (Other) | 120 |
| | Holding offer | 3,490 |
| | Free to be placed in Clearing | 3,560 |
| Direct to Clearing | Placed (Direct to Clearing) | 30 |
| | Other (Direct to Clearing) | 80 |
| All applicants | Placed | 12,100 |

A.2 Summary of applicants who are placed, holding offers or free to be placed in Clearing (Northern Ireland)



A.3 All placed applicants from Northern Ireland: 4 days after A level results day

All placed applicants: difference between cycle and 2017 cycle



Note: The percentage change is not plotted in the above chart for groups with fewer than 30 placed applicants in any one cycle.

A.4 All placed applicants from Northern Ireland: 4 days after A level results day

All placed applicants: applicants at 4 days after A level results day

| Applicant type | Status | 2009 | 2010 | 2011 | 2012 | 2013 | 2014 | 2015 | 2016 | 2017 | 2018 |
|----------------|--------|--------|--------|--------|--------|--------|--------|--------|--------|--------|--------|
| All applicants | Placed | 11,460 | 11,910 | 12,180 | 11,300 | 12,630 | 12,610 | 12,420 | 13,270 | 12,870 | 12,100 |

A.5 All placed applicants from Northern Ireland: 4 days after A level results day

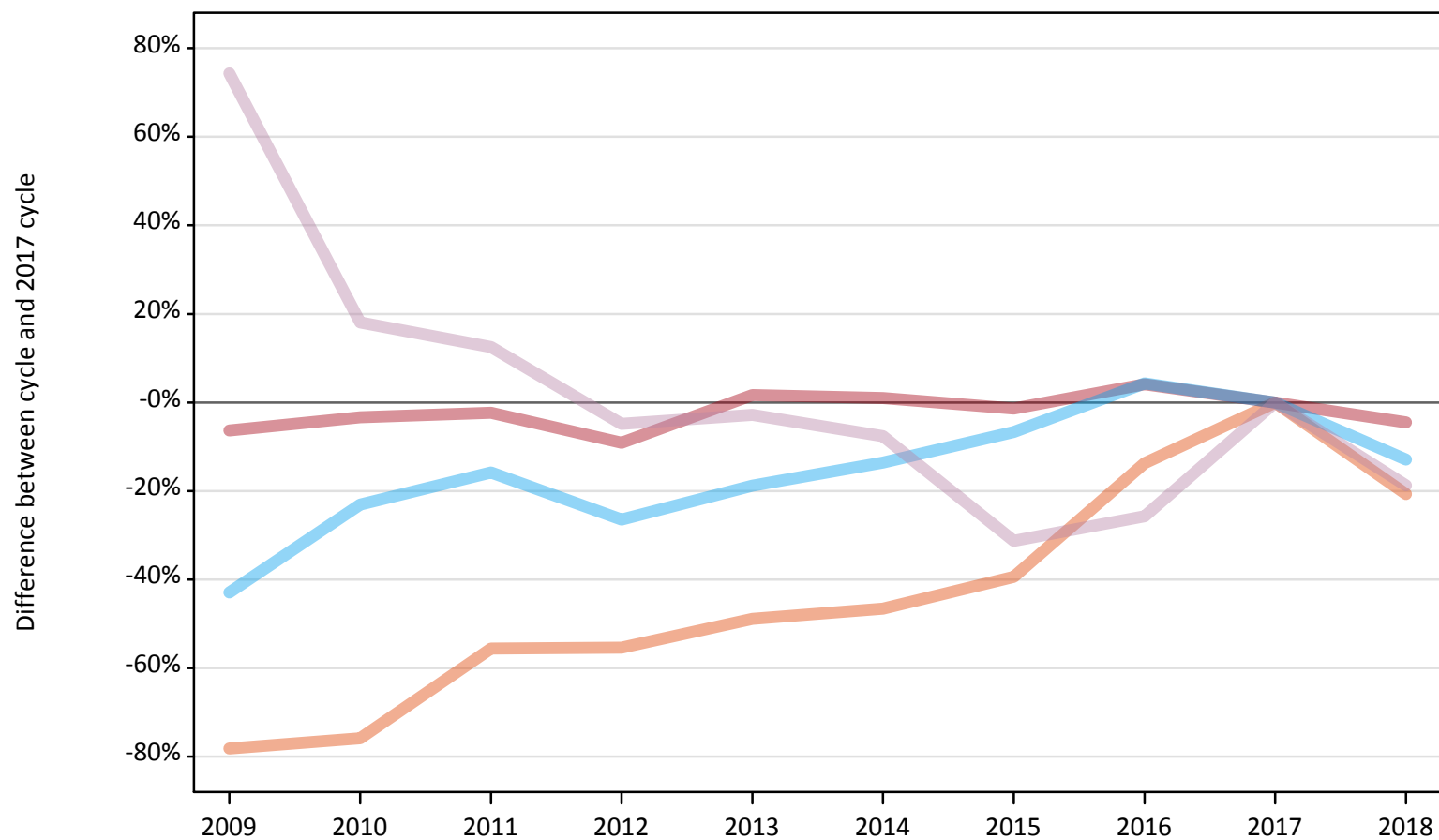
All placed applicants: difference between cycle and 2017 cycle

| Applicant type | Status | 2009 | 2010 | 2011 | 2012 | 2013 | 2014 | 2015 | 2016 | 2017 | 2018 |
|----------------|--------|------|------|------|------|------|------|------|------|------|------|
| All applicants | Placed | -11% | -7% | -5% | -12% | -2% | -2% | -3% | 3% | 0% | -6% |

Note: The percentage change is not recorded in the above table for groups with fewer than 10 placed applicants in that cycle or in the 2017 cycle.

A.6 Placed main scheme applicants from Northern Ireland: 4 days after A level results day
All Main scheme placed routes (excluding Adjustment): difference between cycle and 2017 cycle

- Placed (Clearing)
- Placed (Firm)
- Placed (Insurance)
- Placed (Other)



Note: The percentage change is not plotted in the above chart for groups with fewer than 30 placed applicants in any one cycle.

A.7 Placed main scheme applicants from Northern Ireland: 4 days after A level results day

All Main scheme placed routes (excluding Adjustment): applicants at 4 days after A level results day

| Applicant type | Status | 2009 | 2010 | 2011 | 2012 | 2013 | 2014 | 2015 | 2016 | 2017 | 2018 |
|----------------|--------------------|--------|--------|--------|--------|--------|--------|--------|--------|--------|--------|
| Main scheme | Placed (Clearing) | 100 | 110 | 200 | 200 | 230 | 240 | 270 | 380 | 440 | 350 |
| | Placed (Firm) | 10,480 | 10,810 | 10,920 | 10,170 | 11,380 | 11,300 | 11,030 | 11,650 | 11,190 | 10,680 |
| | Placed (Insurance) | 590 | 800 | 870 | 760 | 840 | 900 | 970 | 1,080 | 1,040 | 900 |
| | Placed (Other) | 250 | 170 | 160 | 140 | 140 | 130 | 100 | 110 | 140 | 120 |

A.8 Placed main scheme applicants from Northern Ireland: 4 days after A level results day

All Main scheme placed routes (excluding Adjustment): difference between cycle and 2017 cycle

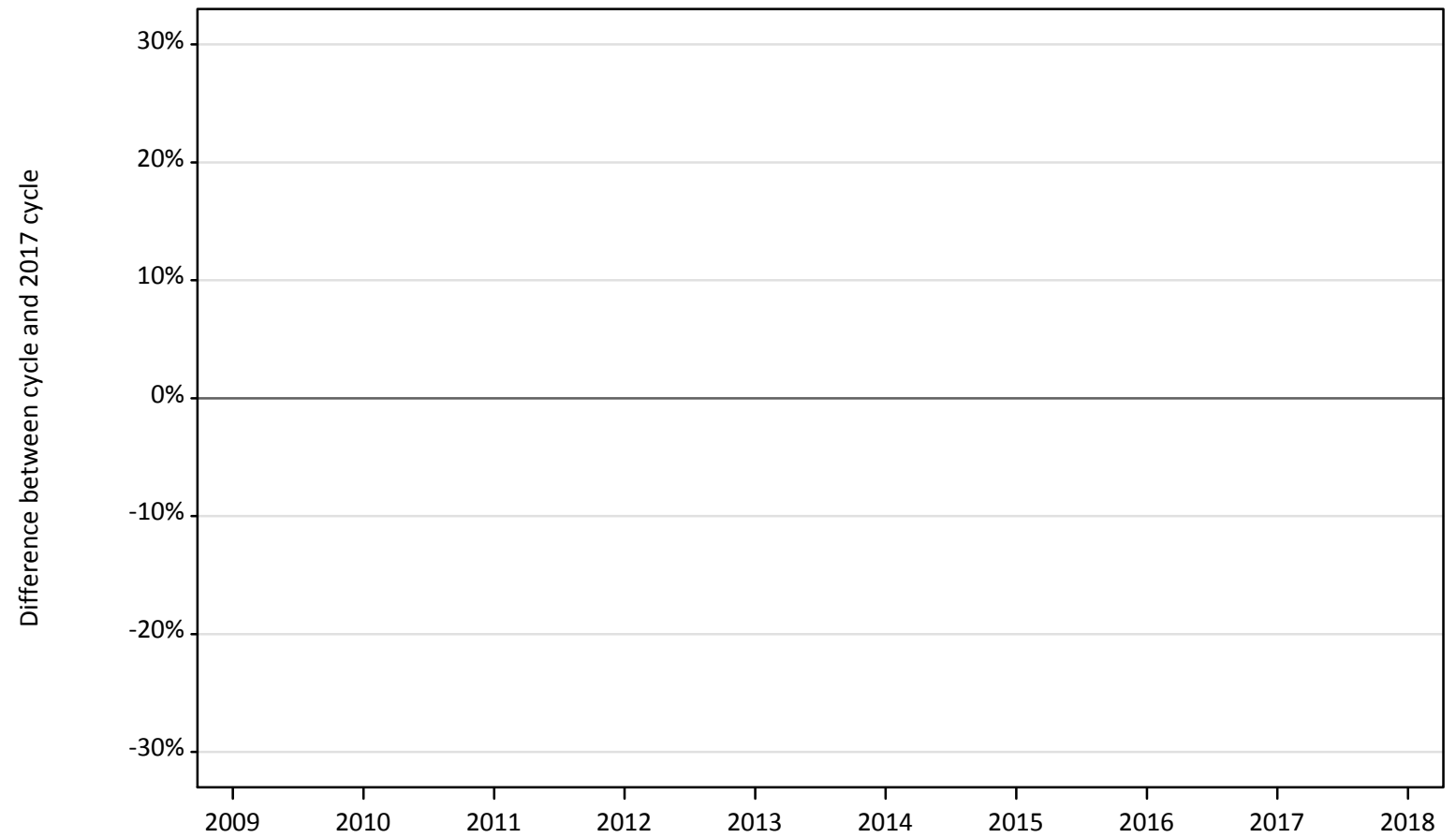
| Applicant type | Status | 2009 | 2010 | 2011 | 2012 | 2013 | 2014 | 2015 | 2016 | 2017 | 2018 |
|----------------|--------------------|------|------|------|------|------|------|------|------|------|------|
| Main scheme | Placed (Clearing) | -78% | -76% | -56% | -55% | -49% | -47% | -39% | -14% | 0% | -21% |
| | Placed (Firm) | -6% | -3% | -2% | -9% | 2% | 1% | -1% | 4% | 0% | -5% |
| | Placed (Insurance) | -43% | -23% | -16% | -26% | -19% | -14% | -7% | 4% | 0% | -13% |
| | Placed (Other) | 74% | 18% | 13% | -5% | -3% | -8% | -31% | -26% | 0% | -19% |

Note: The percentage change is not recorded in the above table for groups with fewer than 10 placed applicants in that cycle or in the 2017 cycle.

A.9 Main scheme applicants placed through adjustment: 4 days after A level results day

Placed through adjustment: difference between cycle and 2017 cycle

Placed (Adjustment)



Note: The percentage change is not plotted in the above chart for groups with fewer than 30 placed applicants in any one cycle.

A.10 Main scheme applicants placed through adjustment: 4 days after A level results day

Placed through adjustment: applicants at 4 days after A level results day

| Applicant type | Status | 2009 | 2010 | 2011 | 2012 | 2013 | 2014 | 2015 | 2016 | 2017 | 2018 |
|----------------|---------------------|------|------|------|------|------|------|------|------|------|------|
| Main scheme | Placed (Adjustment) | 10 | 10 | 10 | 20 | 20 | 20 | 30 | 20 | 30 | 20 |

A.11 Main scheme applicants placed through adjustment: 4 days after A level results day

Placed through adjustment: difference between cycle and 2017 cycle

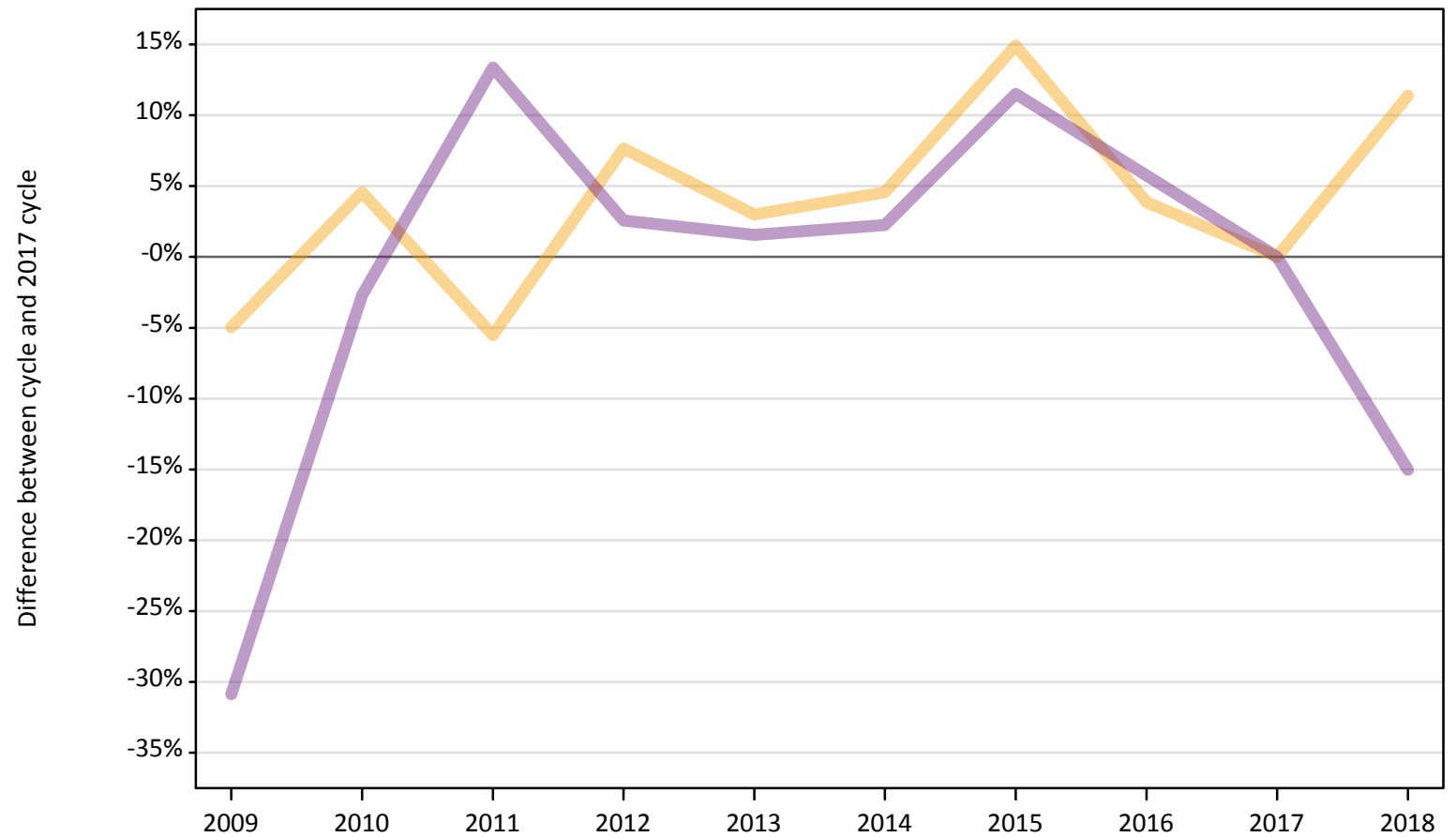
| Applicant type | Status | 2009 | 2010 | 2011 | 2012 | 2013 | 2014 | 2015 | 2016 | 2017 | 2018 |
|----------------|---------------------|------|------|------|------|------|------|------|------|------|------|
| Main scheme | Placed (Adjustment) | -70% | -63% | -74% | -26% | -22% | -22% | 11% | -30% | 0% | -41% |

Note: The percentage change is not recorded in the above table for groups with fewer than 10 placed applicants in that cycle or in the 2017 cycle.

A.12 Main scheme applicants not currently placed from Northern Ireland: 4 days after A level results day

Applicants in unplaced states: difference between cycle and 2017 cycle

— Holding offer
— Free to be placed in Clearing



Note: The percentage change is not plotted in the above chart for groups with fewer than 30 unplaced applicants in any one cycle.

A.13 Main scheme applicants not currently placed from Northern Ireland: 4 days after A level results day

Applicants in unplaced states: applicants at 4 days after A level results day

| Applicant type | Status | 2009 | 2010 | 2011 | 2012 | 2013 | 2014 | 2015 | 2016 | 2017 | 2018 |
|----------------|-------------------------------|-------|-------|-------|-------|-------|-------|-------|-------|-------|-------|
| Main scheme | Holding offer | 2,980 | 3,280 | 2,960 | 3,380 | 3,230 | 3,280 | 3,600 | 3,260 | 3,140 | 3,490 |
| | Free to be placed in Clearing | 2,890 | 4,070 | 4,750 | 4,290 | 4,250 | 4,280 | 4,670 | 4,430 | 4,190 | 3,560 |

A.14 Main scheme applicants not currently placed from Northern Ireland: 4 days after A level results day

Applicants in unplaced states: difference between cycle and 2017 cycle

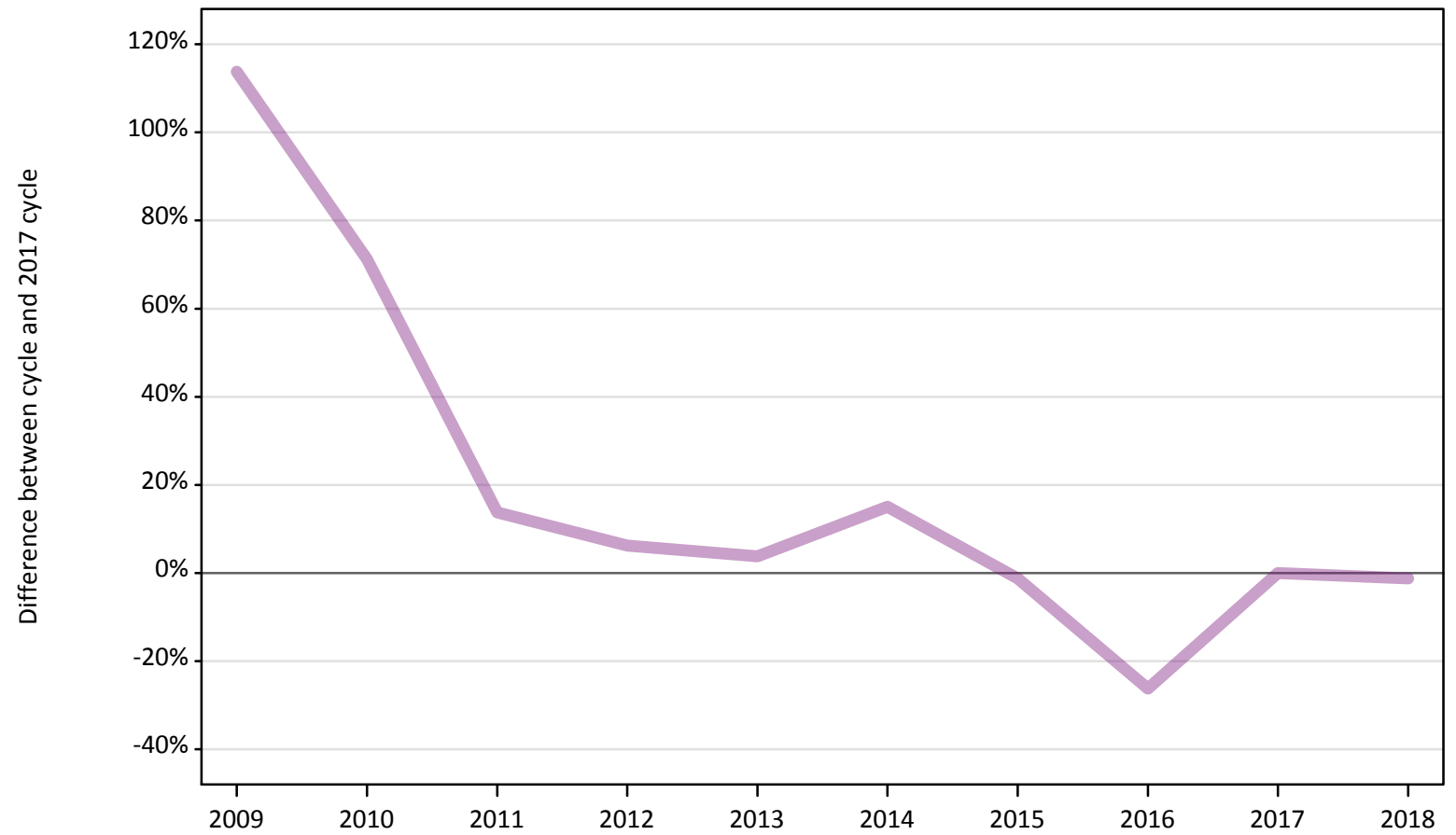
| Applicant type | Status | 2009 | 2010 | 2011 | 2012 | 2013 | 2014 | 2015 | 2016 | 2017 | 2018 |
|----------------|-------------------------------|------|------|------|------|------|------|------|------|------|------|
| Main scheme | Holding offer | -5% | 5% | -6% | 8% | 3% | 5% | 15% | 4% | 0% | 11% |
| | Free to be placed in Clearing | -31% | -3% | 13% | 3% | 2% | 2% | 12% | 6% | 0% | -15% |

Note: The percentage change is not recorded in the above table for groups with fewer than 10 unplaced applicants in that cycle or in the 2017 cycle.

A.15 Direct to Clearing applicants from Northern Ireland: 4 days after A level results day

Direct to Clearing: difference between cycle and 2017 cycle

- Placed (Direct to Clearing)
- Other (Direct to Clearing)



Note: The percentage change is not plotted in the above chart for groups with fewer than 30 placed applicants in any one cycle.

A.16 Direct to Clearing applicants from Northern Ireland: 4 days after A level results day

Direct to Clearing 4 days after A level results day

| Applicant type | Status | 2009 | 2010 | 2011 | 2012 | 2013 | 2014 | 2015 | 2016 | 2017 | 2018 |
|--------------------|-----------------------------|------|------|------|------|------|------|------|------|------|------|
| Direct to Clearing | Placed (Direct to Clearing) | 40 | 20 | 10 | 20 | 20 | 30 | 20 | 30 | 30 | 30 |
| | Other (Direct to Clearing) | 170 | 140 | 90 | 90 | 80 | 90 | 80 | 60 | 80 | 80 |

A.17 Direct to Clearing applicants from Northern Ireland: 4 days after A level results day

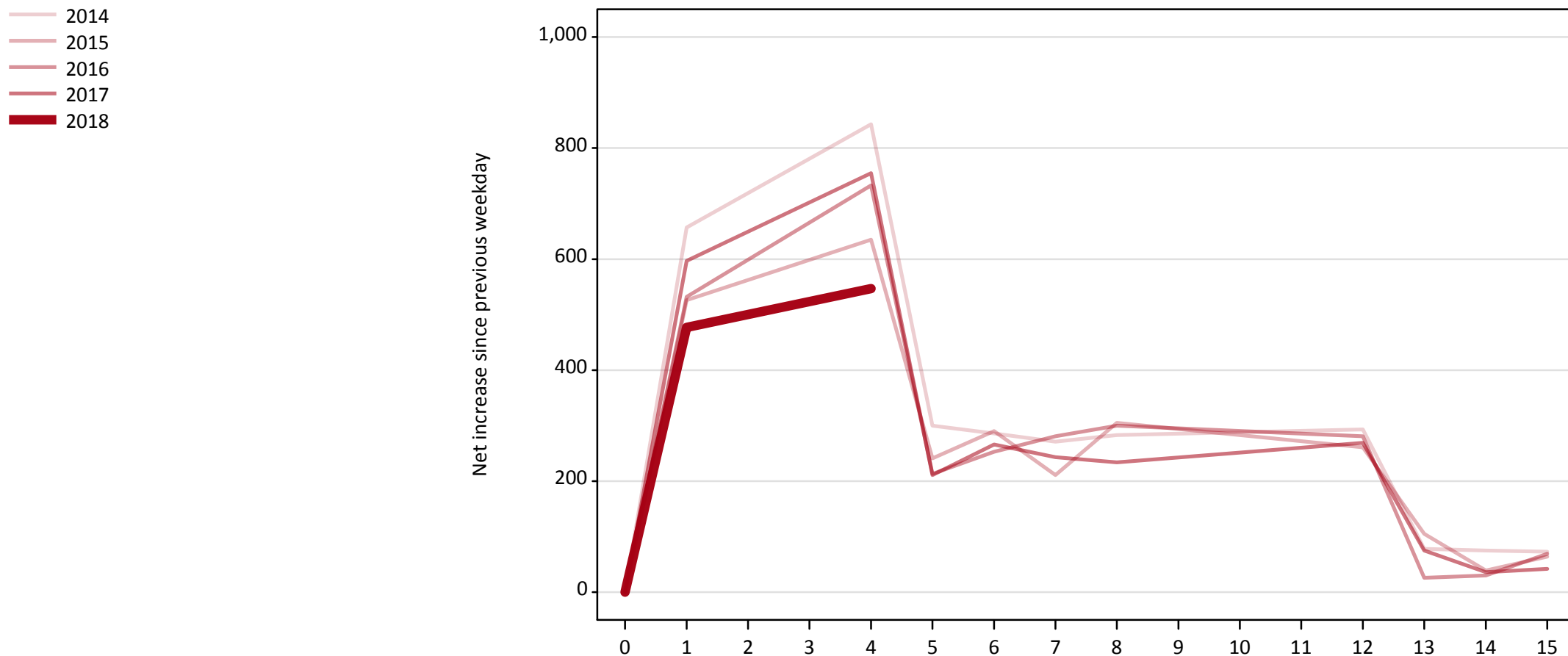
Direct to Clearing: difference between cycle and 2017 cycle

| Applicant type | Status | 2009 | 2010 | 2011 | 2012 | 2013 | 2014 | 2015 | 2016 | 2017 | 2018 |
|--------------------|-----------------------------|------|------|------|------|------|------|------|------|------|------|
| Direct to Clearing | Placed (Direct to Clearing) | 13% | -44% | -56% | -50% | -28% | -19% | -28% | -3% | 0% | 3% |
| | Other (Direct to Clearing) | 114% | 71% | 14% | 6% | 4% | 15% | -1% | -26% | 0% | -1% |

Note: The percentage change is not recorded in the above table for groups with fewer than 10 placed applicants in that cycle or in the 2017 cycle.

A.18 All Placed: Daily net change (from Northern Ireland)

Net increase since previous weekday (2018 cycle up to 4 days after A level results day)



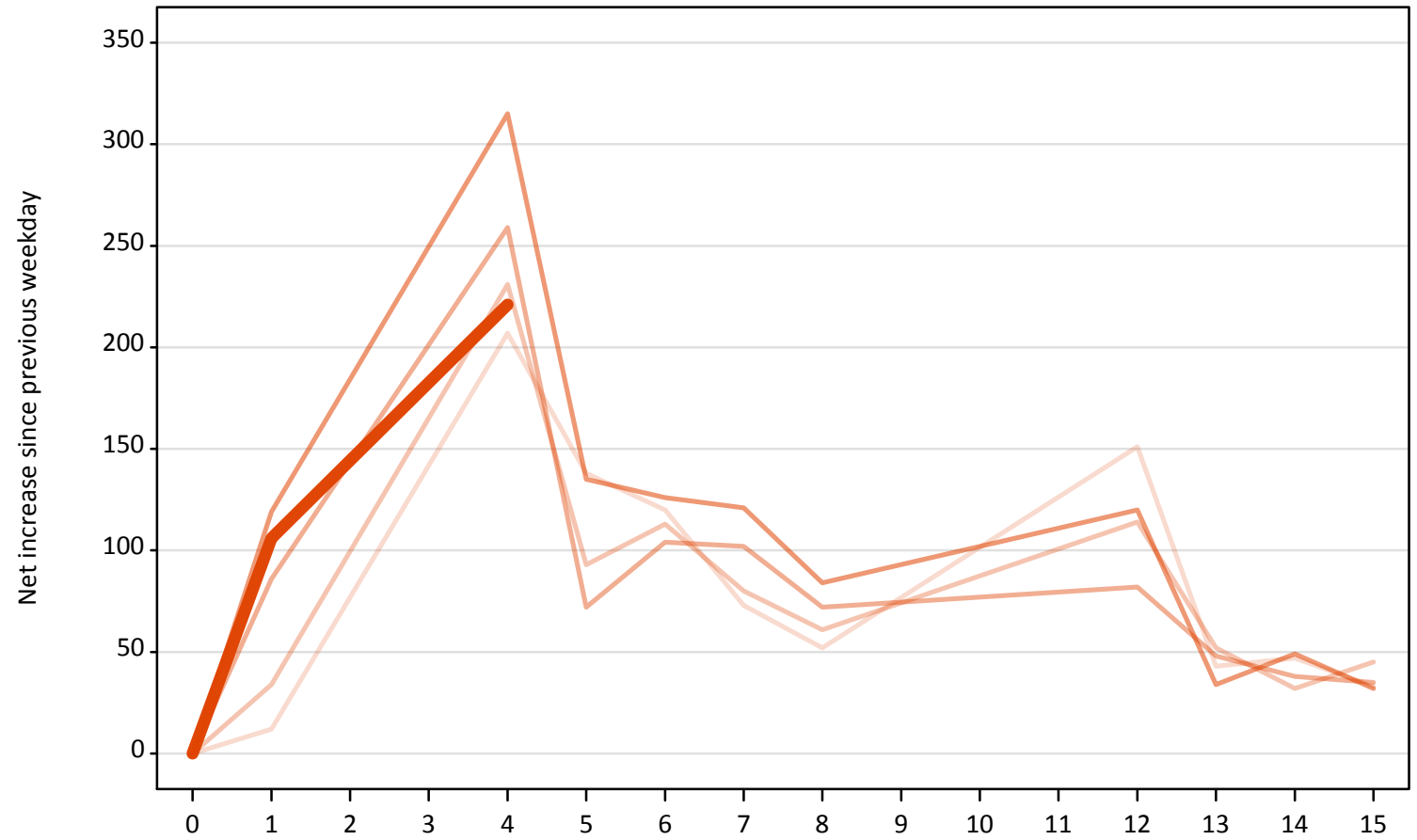
A.19 All Placed: Daily net change (from Northern Ireland)

Net increase since previous weekday (2018 cycle up to 4 days after A level results day)

| Applicant status, days since A level results day | | 2014 | 2015 | 2016 | 2017 | 2018 |
|--|----|------|------|------|------|------|
| All Placed | 0 | 0 | 0 | 0 | 0 | 0 |
| | 1 | 660 | 530 | 530 | 600 | 480 |
| | 4 | 840 | 640 | 730 | 760 | 550 |
| | 5 | 300 | 240 | 210 | 210 | |
| | 6 | 290 | 290 | 250 | 270 | |
| | 7 | 270 | 210 | 280 | 240 | |
| | 8 | 280 | 310 | 300 | 230 | |
| | 12 | 290 | 260 | 280 | 270 | |
| | 13 | 80 | 110 | 30 | 80 | |
| | 14 | 80 | 40 | 30 | 40 | |
| | 15 | 70 | 60 | 70 | 40 | |

A.20 Placed through Clearing only: Daily net change (from Northern Ireland)
Net increase since previous weekday (2018 cycle up to 4 days after A level results day)

- 2014
- 2015
- 2016
- 2017
- 2018**

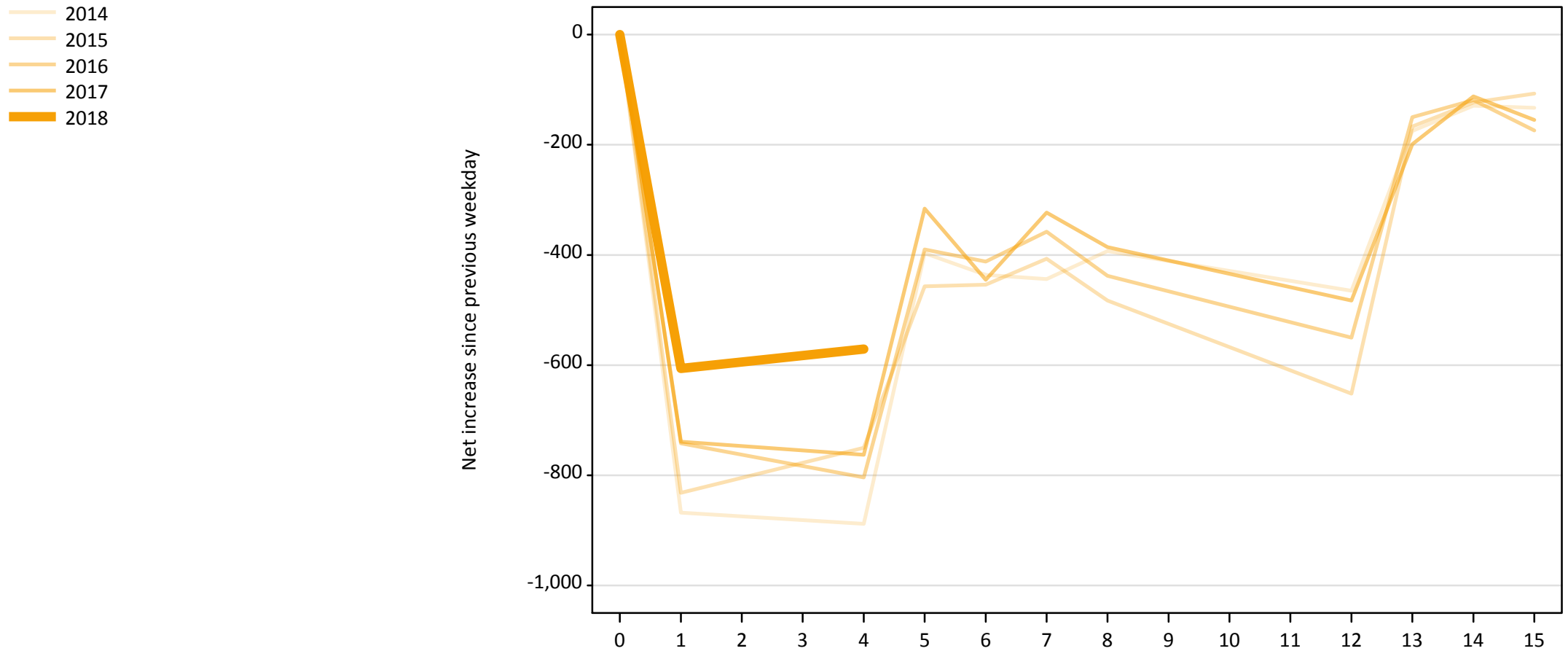


A.21 Placed through Clearing only: Daily net change (from Northern Ireland)

Net increase since previous weekday (2018 cycle up to 4 days after A level results day)

| Applicant status, days since A level results day | | 2014 | 2015 | 2016 | 2017 | 2018 |
|--|----|------|------|------|------|------|
| Placed through Clearing only | 0 | 0 | 0 | 0 | 0 | 0 |
| | 1 | 10 | 30 | 90 | 120 | 110 |
| | 4 | 210 | 230 | 260 | 320 | 220 |
| | 5 | 140 | 90 | 70 | 140 | |
| | 6 | 120 | 110 | 100 | 130 | |
| | 7 | 70 | 80 | 100 | 120 | |
| | 8 | 50 | 60 | 70 | 80 | |
| | 12 | 150 | 110 | 80 | 120 | |
| | 13 | 40 | 50 | 50 | 30 | |
| | 14 | 50 | 30 | 40 | 50 | |
| | 15 | 30 | 50 | 40 | 30 | |

A.22 Holding Offer: Daily net change (from Northern Ireland)
Net increase since previous weekday (2018 cycle up to 4 days after A level results day)



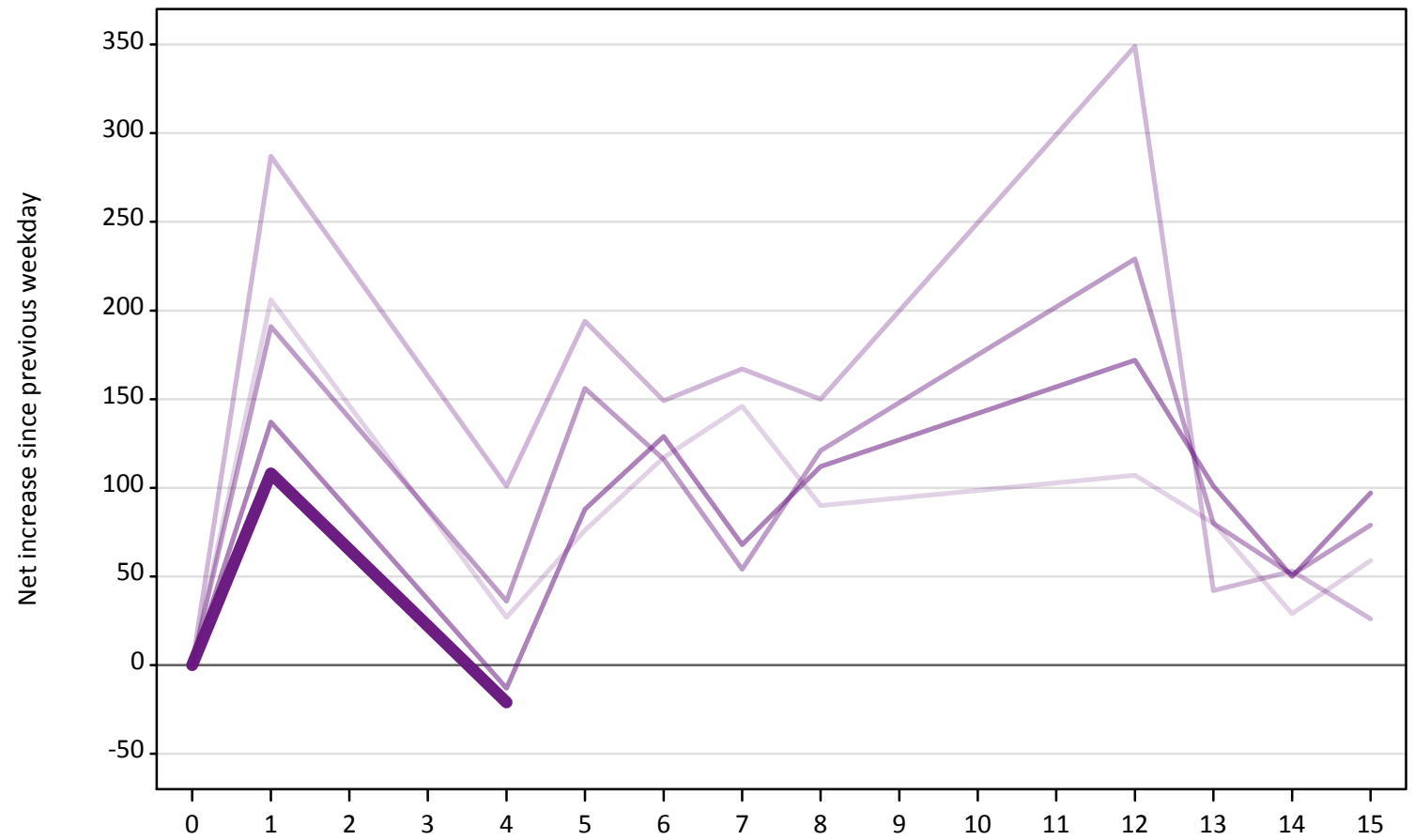
A.23 Holding Offer: Daily net change (from Northern Ireland)

Net increase since previous weekday (2018 cycle up to 4 days after A level results day)

| Applicant status, days since A level results day | | 2014 | 2015 | 2016 | 2017 | 2018 |
|--|----|------|------|------|------|------|
| Holding Offer | 0 | 0 | 0 | 0 | 0 | 0 |
| | 1 | -870 | -830 | -740 | -740 | -610 |
| | 4 | -890 | -750 | -800 | -760 | -570 |
| | 5 | -400 | -460 | -390 | -320 | |
| | 6 | -440 | -450 | -410 | -450 | |
| | 7 | -440 | -410 | -360 | -320 | |
| | 8 | -390 | -480 | -440 | -390 | |
| | 12 | -470 | -650 | -550 | -480 | |
| | 13 | -180 | -170 | -150 | -200 | |
| | 14 | -130 | -120 | -120 | -110 | |
| | 15 | -130 | -110 | -170 | -160 | |

A.24 Free to be placed in Clearing: Daily net change (from Northern Ireland)
Net increase since previous weekday (2018 cycle up to 4 days after A level results day)

- 2014
- 2015
- 2016
- 2017
- 2018



A.25 Free to be placed in Clearing: Daily net change (from Northern Ireland)
 Net increase since previous weekday (2018 cycle up to 4 days after A level results day)

| Applicant status, days since A level results day | | 2014 | 2015 | 2016 | 2017 | 2018 |
|--|----|------|------|------|------|------|
| Free to be placed in Clearing | 0 | 0 | 0 | 0 | 0 | 0 |
| | 1 | 210 | 290 | 190 | 140 | 110 |
| | 4 | 30 | 100 | 40 | -10 | -20 |
| | 5 | 80 | 190 | 160 | 90 | |
| | 6 | 120 | 150 | 120 | 130 | |
| | 7 | 150 | 170 | 50 | 70 | |
| | 8 | 90 | 150 | 120 | 110 | |
| | 12 | 110 | 350 | 230 | 170 | |
| | 13 | 80 | 40 | 80 | 100 | |
| | 14 | 30 | 50 | 50 | 50 | |
| | 15 | 60 | 30 | 80 | 100 | |