

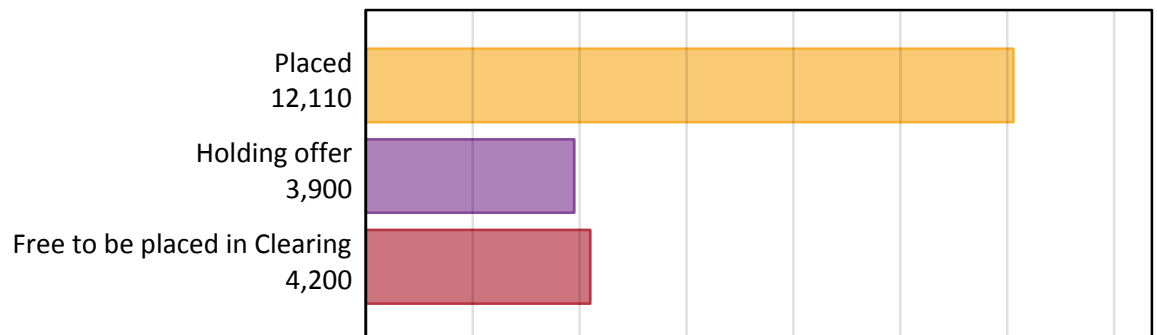
# Daily Clearing Analysis: Overview

Analysis at 00:05 on Friday 18 August 2017 (1 day after A level results day)

## A.1 Applicants by type and status from Northern Ireland, 2017 cycle

Applicant type	Status	2017
Main scheme	Placed (Clearing)	140
	Placed (Adjustment)	10
	Placed (Firm)	10,960
	Placed (Insurance)	840
	Placed (Other)	140
	Holding offer	3,900
	Free to be placed in Clearing	4,200
Direct to Clearing	Placed (Direct to Clearing)	20
	Other (Direct to Clearing)	70
All applicants	Placed	12,110

## A.2 Summary of applicants who are placed, holding offers or free to be placed in Clearing ( Northern Ireland )



### A.3 All placed applicants from Northern Ireland: 1 day after A level results day

All placed applicants: difference between cycle and 2016 cycle

Placed



### A.4 All placed applicants from Northern Ireland: 1 day after A level results day

All placed applicants: applicants at 1 day after A level results day

Applicant type	Status	2013	2014	2015	2016	2017
All applicants	Placed	11,800	11,770	11,790	12,540	12,110

### A.5 All placed applicants from Northern Ireland: 1 day after A level results day

All placed applicants: difference between cycle and 2016 cycle

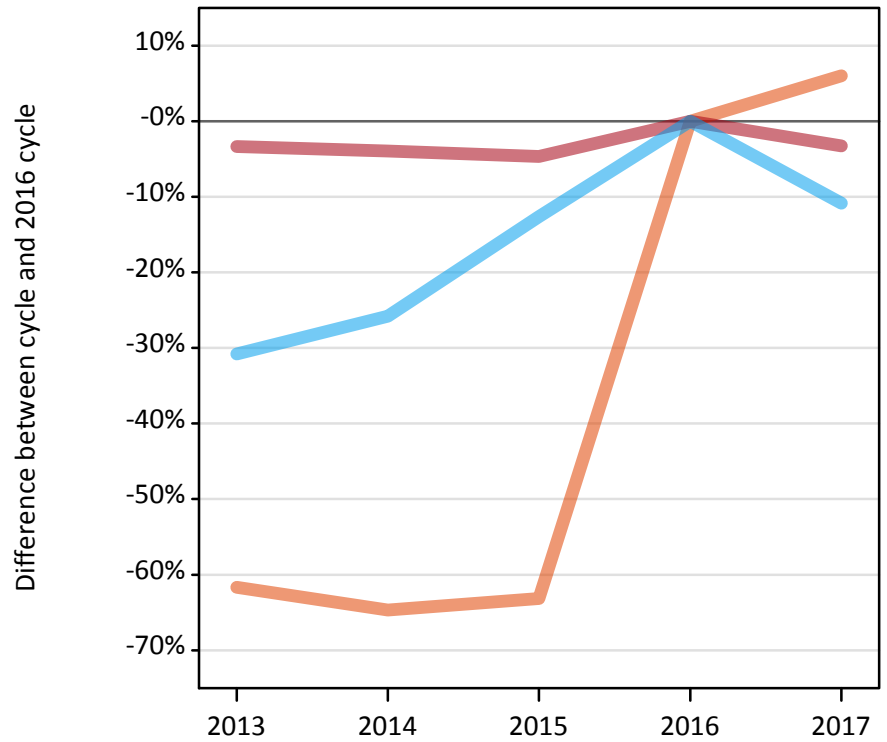
Applicant type	Status	2013	2014	2015	2016	2017
All applicants	Placed	-6%	-6%	-6%	0%	-3%

Note: Percentage changes are not plotted for lines with, on average, fewer than 30 applicants per year. As a result, lines for some, or all, of the states may be missing.

### A.6 Placed main scheme applicants from Northern Ireland: 1 day after A level results day

Selected placed routes: difference between cycle and 2016 cycle

- Placed (Clearing)
- Placed (Firm)
- Placed (Insurance)



### A.7 Placed main scheme applicants from Northern Ireland: 1 day after A level results day

All Main scheme placed routes (excluding Adjustment): applicants at 1 day after A level results day

Applicant type	Status	2013	2014	2015	2016	2017
Main scheme	Placed (Clearing)	50	50	50	130	140
	Placed (Firm)	10,950	10,880	10,800	11,330	10,960
	Placed (Insurance)	650	700	820	940	840
	Placed (Other)	140	130	100	110	140

### A.8 Placed main scheme applicants from Northern Ireland: 1 day after A level results day

Selected placed routes: difference between cycle and 2016 cycle

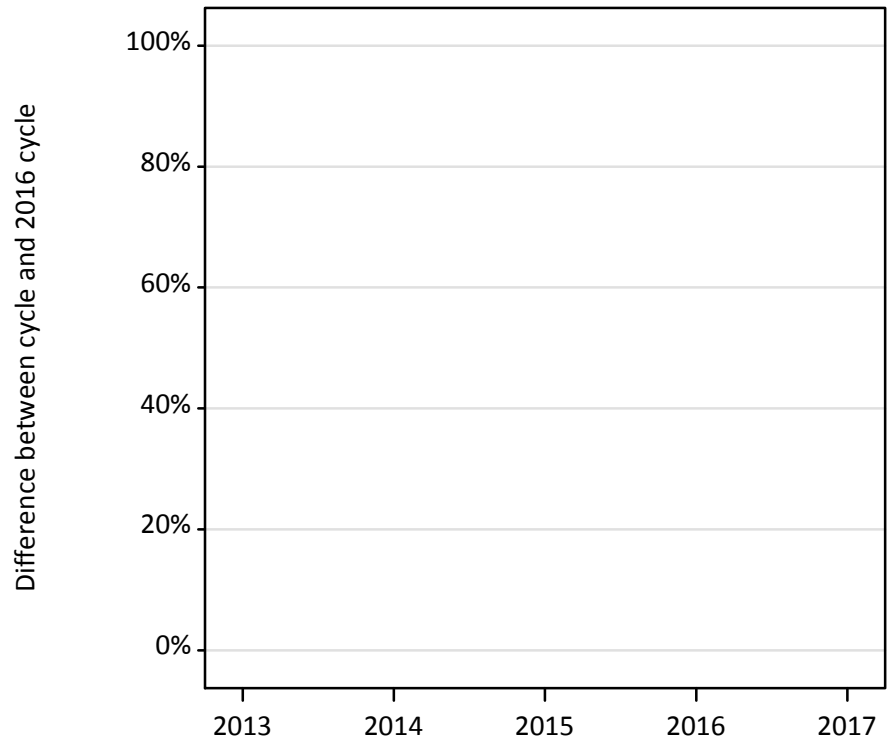
Applicant type	Status	2013	2014	2015	2016	2017
Main scheme	Placed (Clearing)	-62%	-65%	-63%	0%	6%
	Placed (Firm)	-3%	-4%	-5%	0%	-3%
	Placed (Insurance)	-31%	-26%	-13%	0%	-11%

Note: Percentage changes are not plotted for lines with, on average, fewer than 30 applicants per year. As a result, lines for some, or all, of the states may be missing.

### A.9 Main scheme applicants placed through adjustment: 1 day after A level results day

Placed through adjustment: difference between cycle and 2016 cycle

Placed (Adjustment)



### A.10 Main scheme applicants placed through adjustment: 1 day after A level results day

Placed through adjustment: applicants at 1 day after A level results day

Applicant type	Status	2013	2014	2015	2016	2017
Main scheme	Placed (Adjustment)	10	10	10	10	10

### A.11 Main scheme applicants placed through adjustment: 1 day after A level results day

Placed through adjustment: difference between cycle and 2016 cycle

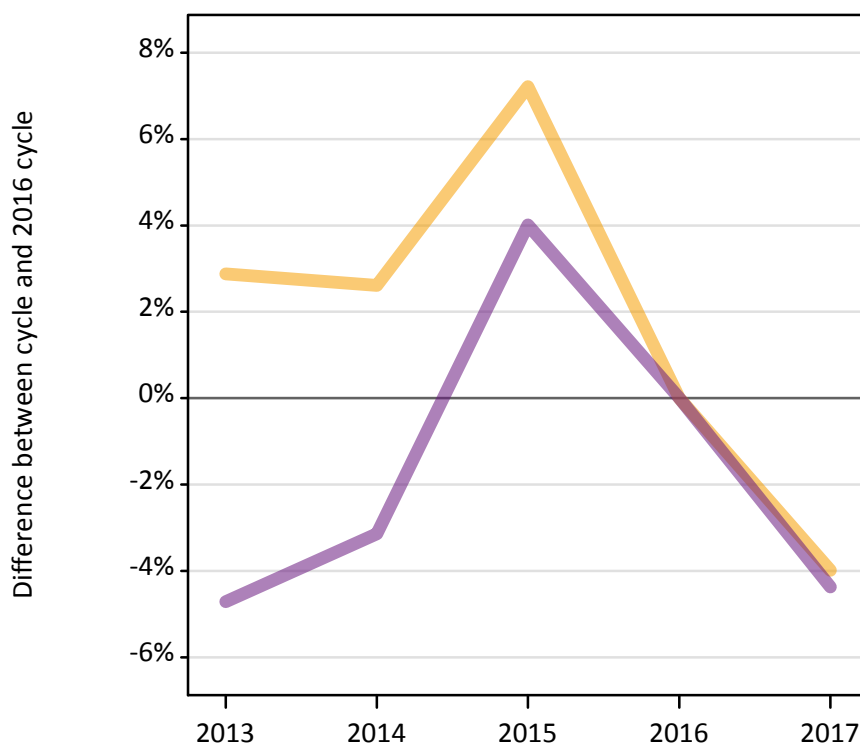
Applicant type	Status	2013	2014	2015	2016	2017
Main scheme	Placed (Adjustment)	-14%	-14%	57%	0%	100%

Note: Percentage changes are not plotted for lines with, on average, fewer than 30 applicants per year. As a result, lines for some, or all, of the states may be missing.

### A.12 Main scheme applicants not currently placed from Northern Ireland: 1 day after A level results day

Applicants in unplaced states: difference between cycle and 2016 cycle

— Holding offer  
— Free to be placed in Clearing



### A.13 Main scheme applicants not currently placed from Northern Ireland: 1 day after A level results day

Applicants in unplaced states: applicants at 1 day after A level results day

Applicant type	Status	2013	2014	2015	2016	2017
Main scheme	Holding offer	4,180	4,170	4,350	4,060	3,900
	Free to be placed in Clearing	4,180	4,250	4,570	4,390	4,200

### A.14 Main scheme applicants not currently placed from Northern Ireland: 1 day after A level results day

Applicants in unplaced states: difference between cycle and 2016 cycle

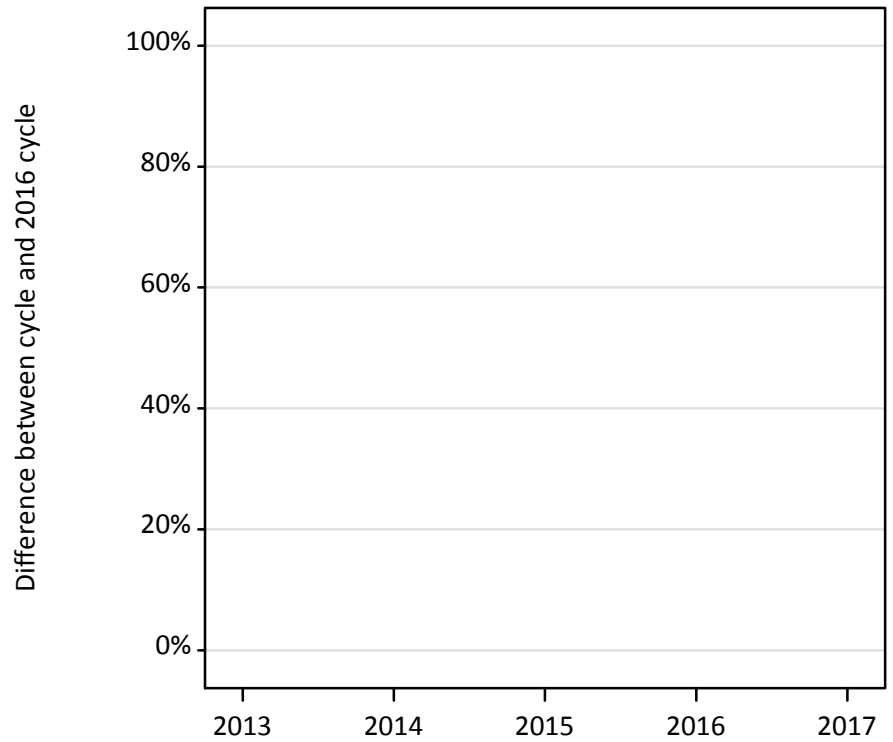
Applicant type	Status	2013	2014	2015	2016	2017
Main scheme	Holding offer	3%	3%	7%	0%	-4%
	Free to be placed in Clearing	-5%	-3%	4%	0%	-4%

Note: Percentage changes are not plotted for lines with, on average, fewer than 30 applicants per year. As a result, lines for some, or all, of the states may be missing.

### A.15 Direct to Clearing applicants from Northern Ireland: 1 day after A level results day

Placed (Direct to Clearing): difference between cycle and 2016 cycle

Placed (Direct to Clearing)



### A.16 Direct to Clearing applicants from Northern Ireland: 1 day after A level results day

Direct to Clearing 1 day after A level results day

Applicant type	Status	2013	2014	2015	2016	2017
Direct to Clearing	Placed (Direct to Clearing)	10	10	10	20	20
	Other (Direct to Clearing)	80	90	80	60	70

### A.17 Direct to Clearing applicants from Northern Ireland: 1 day after A level results day

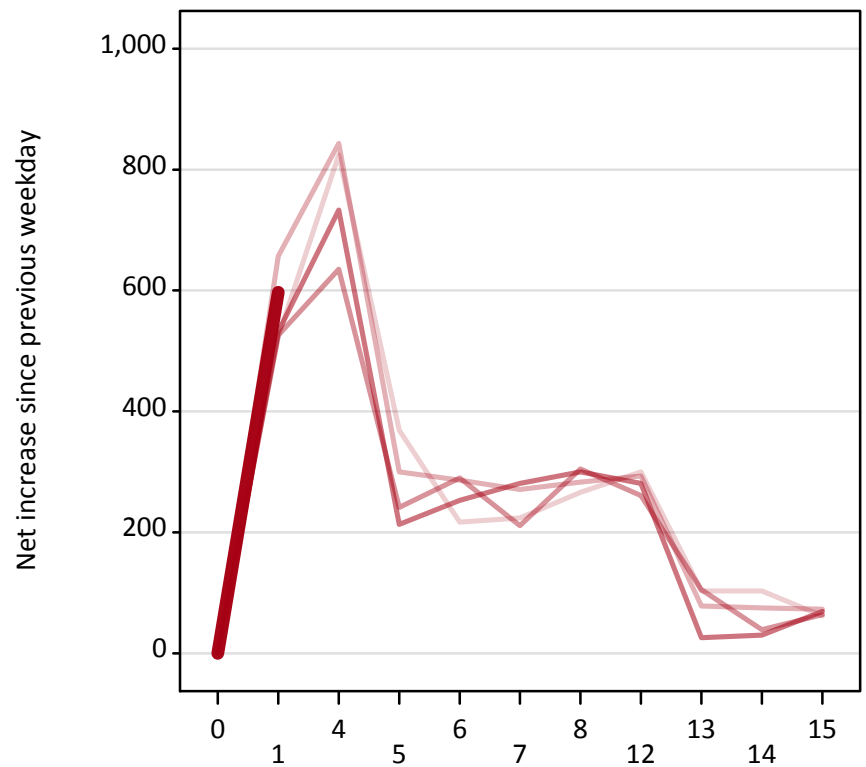
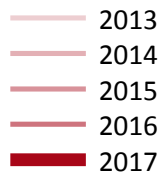
Placed (Direct to Clearing): difference between cycle and 2016 cycle

Applicant type	Status	2013	2014	2015	2016	2017
Direct to Clearing	Placed (Direct to Clearing)	-41%	-59%	-45%	0%	-9%

Note: Percentage changes are not plotted for lines with, on average, fewer than 30 applicants per year. As a result, lines for some, or all, of the states may be missing.

### A.18 All Placed: Daily net change (from Northern Ireland)

Net increase since previous weekday (2017 cycle up to 1 day after A level results day)



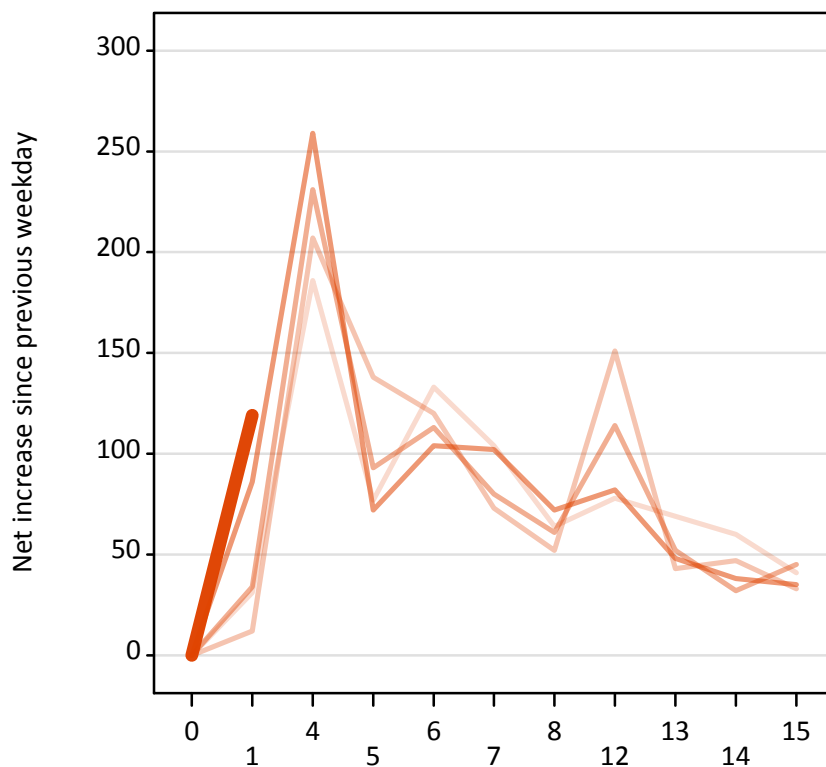
### A.19 All Placed: Daily net change (from Northern Ireland)

Net increase since previous weekday (2017 cycle up to 1 day after A level results day)

Applicant status, days since A level results day		2013	2014	2015	2016	2017
All Placed	0	0	0	0	0	0
	1	520	660	530	530	600
	4	820	840	640	730	
	5	370	300	240	210	
	6	220	290	290	250	
	7	220	270	210	280	
	8	270	280	310	300	
	12	300	290	260	280	
	13	100	80	110	30	
	14	100	80	40	30	
	15	60	70	60	70	

### A.20 Placed through Clearing only: Daily net change (from Northern Ireland)

Net increase since previous weekday (2017 cycle up to 1 day after A level results day)



### A.21 Placed through Clearing only: Daily net change (from Northern Ireland)

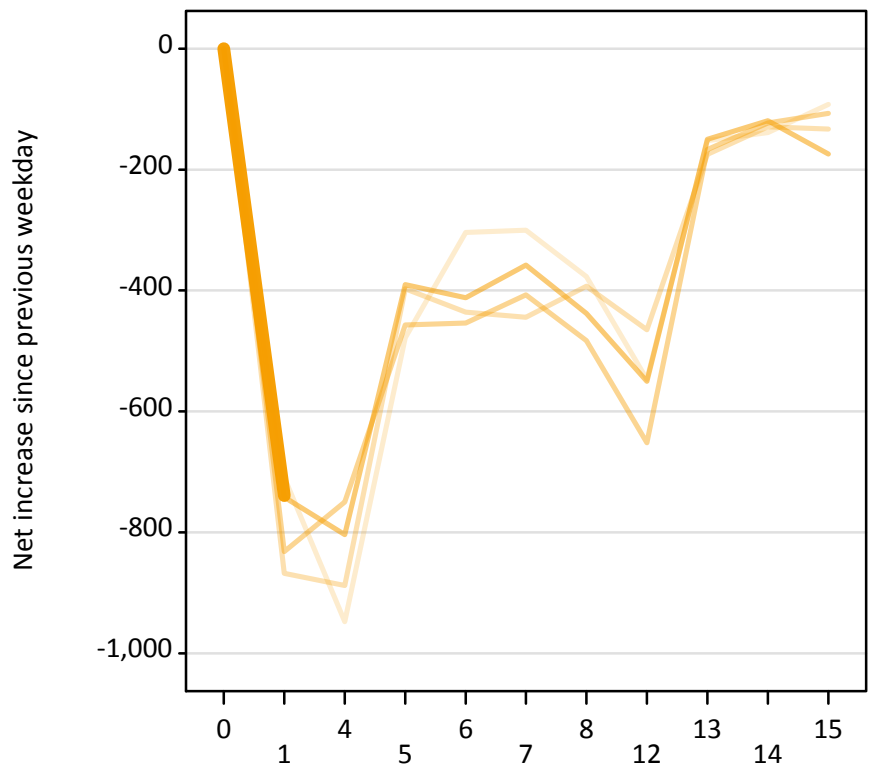
Net increase since previous weekday (2017 cycle up to 1 day after A level results day)

Applicant status, days since A level results day		2013	2014	2015	2016	2017
Placed through Clearing only	0	0	0	0	0	0
	1	30	10	30	90	120
	4	190	210	230	260	
	5	80	140	90	70	
	6	130	120	110	100	
	7	100	70	80	100	
	8	60	50	60	70	
	12	80	150	110	80	
	13	70	40	50	50	
	14	60	50	30	40	
	15	40	30	50	40	



### A.22 Holding Offer: Daily net change (from Northern Ireland)

Net increase since previous weekday (2017 cycle up to 1 day after A level results day)



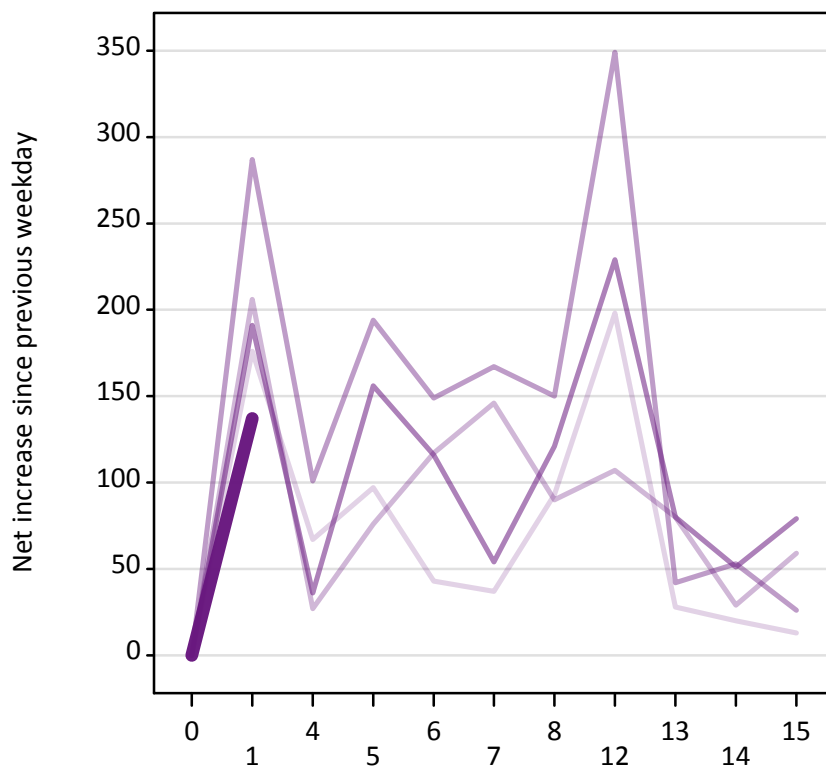
### A.23 Holding Offer: Daily net change (from Northern Ireland)

Net increase since previous weekday (2017 cycle up to 1 day after A level results day)

Applicant status, days since A level results day		2013	2014	2015	2016	2017
Holding Offer	0	0	0	0	0	0
	1	-710	-870	-830	-740	-740
	4	-950	-890	-750	-800	
	5	-480	-400	-460	-390	
	6	-300	-440	-450	-410	
	7	-300	-440	-410	-360	
	8	-380	-390	-480	-440	
	12	-550	-470	-650	-550	
	13	-150	-180	-170	-150	
	14	-140	-130	-120	-120	
	15	-90	-130	-110	-170	

### A.24 Free to be placed in Clearing: Daily net change (from Northern Ireland)

Net increase since previous weekday (2017 cycle up to 1 day after A level results day)



### A.25 Free to be placed in Clearing: Daily net change (from Northern Ireland)

Net increase since previous weekday (2017 cycle up to 1 day after A level results day)

Applicant status, days since A level results day		2013	2014	2015	2016	2017
Free to be placed in Clearing	0	0	0	0	0	0
	1	180	210	290	190	140
	4	70	30	100	40	
	5	100	80	190	160	
	6	40	120	150	120	
	7	40	150	170	50	
	8	90	90	150	120	
	12	200	110	350	230	
	13	30	80	40	80	
	14	20	30	50	50	
	15	10	60	30	80	