

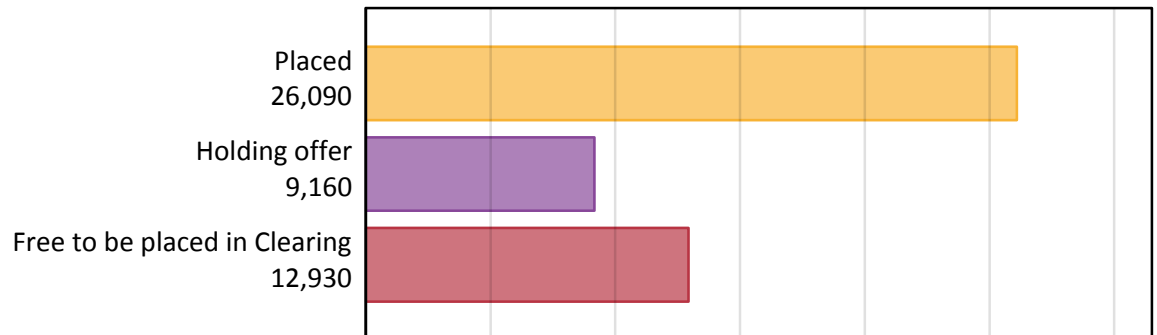
# Daily Clearing Analysis: Overview

Analysis at 00:05 on Thursday 17 August 2017 (A level results day)

## A.1 Applicants by type and status from the EU - excluding UK, 2017 cycle

Applicant type	Status	2017
Main scheme	Placed (Clearing)	510
	Placed (Adjustment)	0
	Placed (Firm)	22,680
	Placed (Insurance)	1,720
	Placed (Other)	1,020
	Holding offer	9,160
	Free to be placed in Clearing	12,930
Direct to Clearing	Placed (Direct to Clearing)	160
	Other (Direct to Clearing)	350
All applicants	Placed	26,090

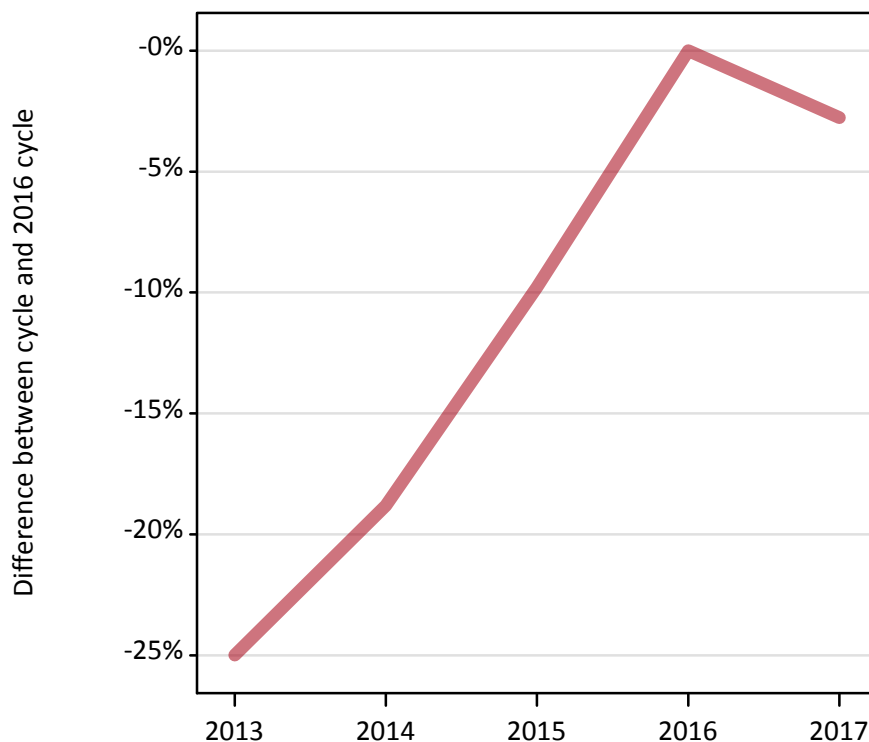
## A.2 Summary of applicants who are placed, holding offers or free to be placed in Clearing ( the EU - excluding UK )



### A.3 All placed applicants from the EU - excluding UK: A level results day

All placed applicants: difference between cycle and 2016 cycle

Placed



### A.4 All placed applicants from the EU - excluding UK: A level results day

All placed applicants: applicants at A level results day

Applicant type	Status	2013	2014	2015	2016	2017
All applicants	Placed	20,130	21,790	24,210	26,830	26,090

### A.5 All placed applicants from the EU - excluding UK: A level results day

All placed applicants: difference between cycle and 2016 cycle

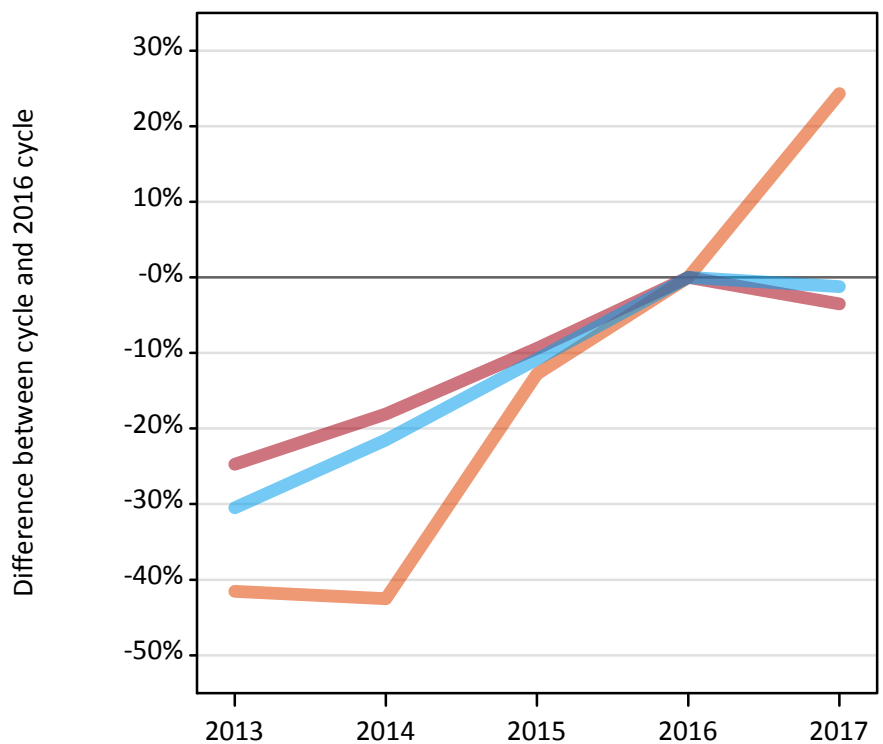
Applicant type	Status	2013	2014	2015	2016	2017
All applicants	Placed	-25%	-19%	-10%	0%	-3%

Note: Percentage changes are not plotted for lines with, on average, fewer than 30 applicants per year. As a result, lines for some, or all, of the states may be missing.

### A.6 Placed main scheme applicants from the EU - excluding UK: A level results day

Selected placed routes: difference between cycle and 2016 cycle

- Placed (Clearing)
- Placed (Firm)
- Placed (Insurance)



### A.7 Placed main scheme applicants from the EU - excluding UK: A level results day

All Main scheme placed routes (excluding Adjustment): applicants at A level results day

Applicant type	Status	2013	2014	2015	2016	2017
Main scheme	Placed (Clearing)	240	230	360	410	510
	Placed (Firm)	17,690	19,250	21,290	23,500	22,680
	Placed (Insurance)	1,210	1,370	1,560	1,750	1,720
	Placed (Other)	880	860	900	1,060	1,020

### A.8 Placed main scheme applicants from the EU - excluding UK: A level results day

Selected placed routes: difference between cycle and 2016 cycle

Applicant type	Status	2013	2014	2015	2016	2017
Main scheme	Placed (Clearing)	-42%	-43%	-13%	0%	24%
	Placed (Firm)	-25%	-18%	-9%	0%	-3%
	Placed (Insurance)	-30%	-21%	-11%	0%	-1%

Note: Percentage changes are not plotted for lines with, on average, fewer than 30 applicants per year. As a result, lines for some, or all, of the states may be missing.

### **A.9 Main scheme applicants placed through adjustment: A level results day**

Placed through adjustment: difference between cycle and 2016 cycle

**[Analysis on placed by adjustment available from 18 August 2017]**

### **A.10 Main scheme applicants placed through adjustment: A level results day**

Placed through adjustment: applicants at A level results day

**[Analysis on placed by adjustment available from 18 August 2017]**

### **A.11 Main scheme applicants placed through adjustment: A level results day**

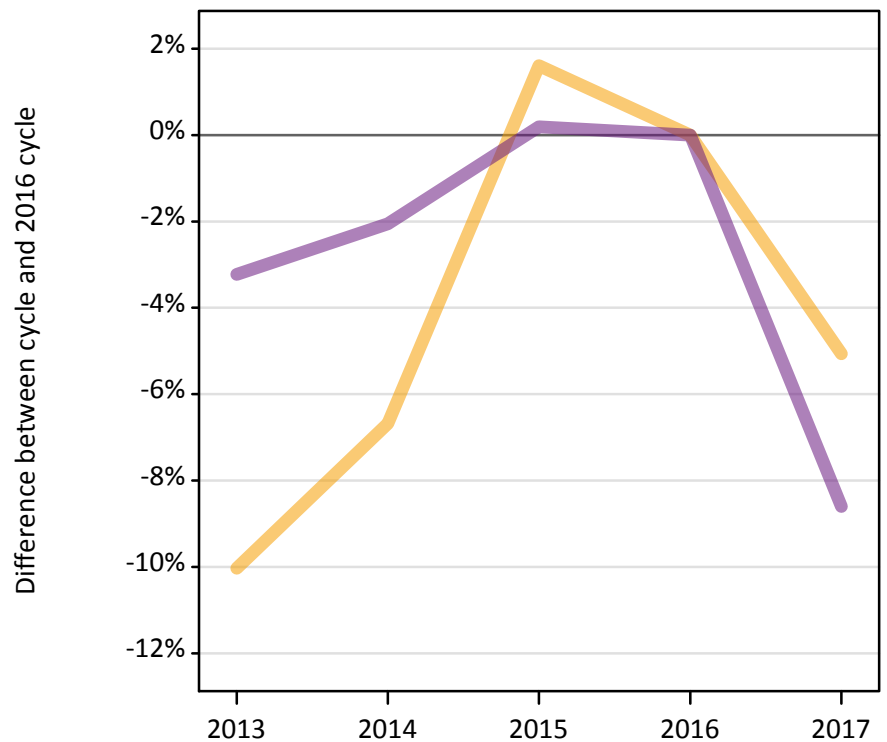
Placed through adjustment: difference between cycle and 2016 cycle

**[Analysis on placed by adjustment available from 18 August 2017]**

### A.12 Main scheme applicants not currently placed from the EU - excluding UK: A level results day

Applicants in unplaced states: difference between cycle and 2016 cycle

— Holding offer  
— Free to be placed in Clearing



### A.13 Main scheme applicants not currently placed from the EU - excluding UK: A level results day

Applicants in unplaced states: applicants at A level results day

Applicant type	Status	2013	2014	2015	2016	2017
Main scheme	Holding offer	8,680	9,010	9,810	9,650	9,160
	Free to be placed in Clearing	13,690	13,850	14,170	14,150	12,930

### A.14 Main scheme applicants not currently placed from the EU - excluding UK: A level results day

Applicants in unplaced states: difference between cycle and 2016 cycle

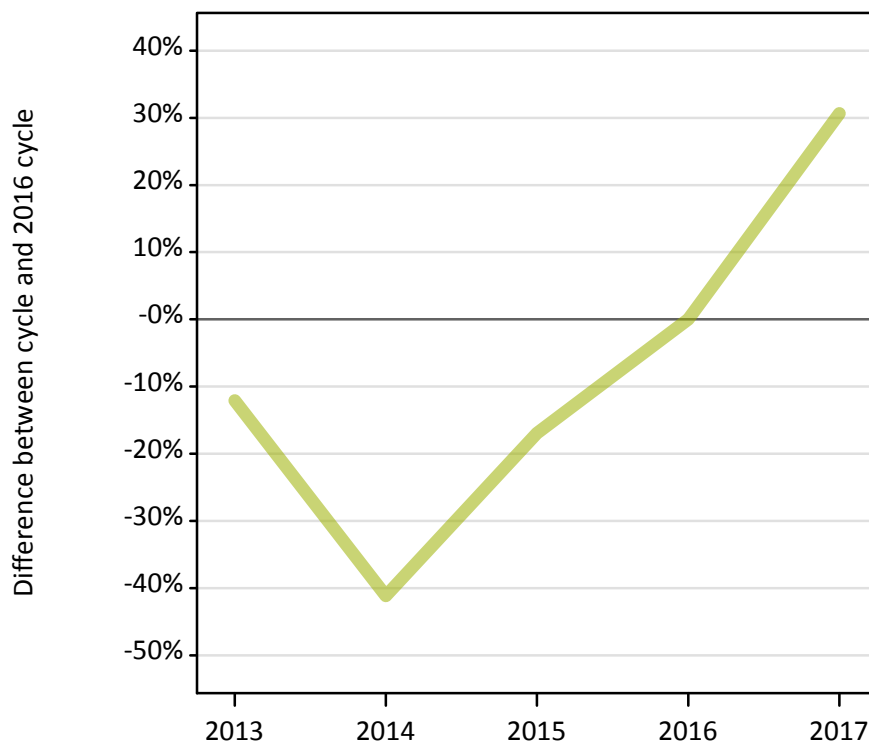
Applicant type	Status	2013	2014	2015	2016	2017
Main scheme	Holding offer	-10%	-7%	2%	0%	-5%
	Free to be placed in Clearing	-3%	-2%	0%	0%	-9%

Note: Percentage changes are not plotted for lines with, on average, fewer than 30 applicants per year. As a result, lines for some, or all, of the states may be missing.

### A.15 Direct to Clearing applicants from the EU - excluding UK: A level results day

Placed (Direct to Clearing): difference between cycle and 2016 cycle

Placed (Direct to Clearing)



### A.16 Direct to Clearing applicants from the EU - excluding UK: A level results day

Direct to Clearing A level results day

Applicant type	Status	2013	2014	2015	2016	2017
Direct to Clearing	Placed (Direct to Clearing)	110	70	100	120	160
	Other (Direct to Clearing)	380	360	390	320	350

### A.17 Direct to Clearing applicants from the EU - excluding UK: A level results day

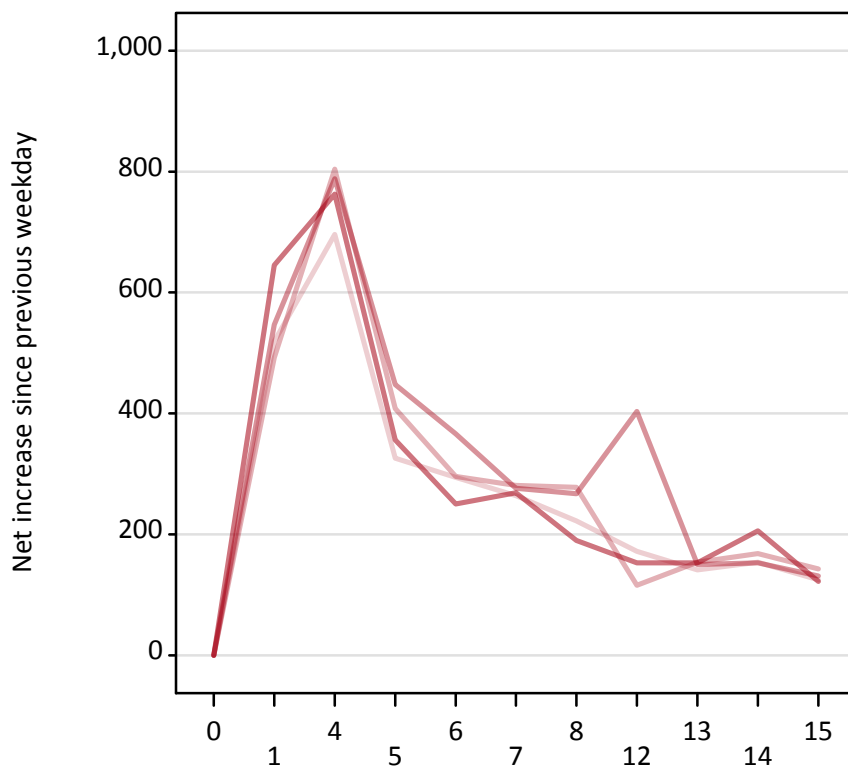
Placed (Direct to Clearing): difference between cycle and 2016 cycle

Applicant type	Status	2013	2014	2015	2016	2017
Direct to Clearing	Placed (Direct to Clearing)	-12%	-41%	-17%	0%	31%

Note: Percentage changes are not plotted for lines with, on average, fewer than 30 applicants per year. As a result, lines for some, or all, of the states may be missing.

### A.18 All Placed: Daily net change (from the EU - excluding UK)

Net increase since previous weekday (2017 cycle up to A level results day)



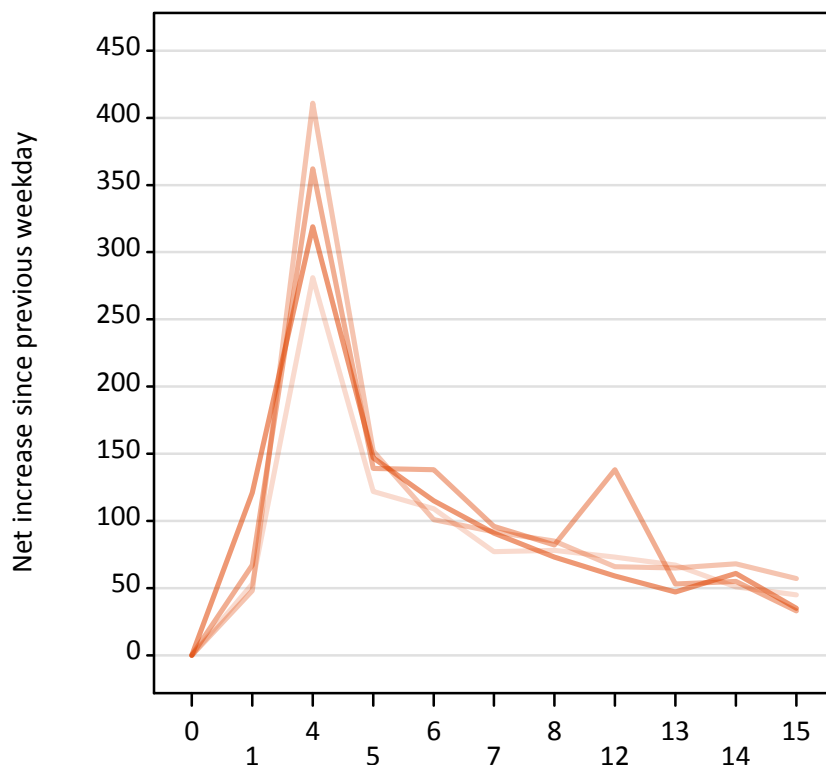
### A.19 All Placed: Daily net change (from the EU - excluding UK)

Net increase since previous weekday (2017 cycle up to A level results day)

Applicant status, days since A level results day		2013	2014	2015	2016	2017
All Placed	0	0	0	0	0	0
	1	520	490	550	650	
	4	700	800	790	760	
	5	330	410	450	360	
	6	290	300	370	250	
	7	260	280	280	270	
	8	220	280	270	190	
	12	170	120	400	150	
	13	140	150	150	150	
	14	150	170	150	210	
	15	130	140	130	120	

### A.20 Placed through Clearing only: Daily net change (from the EU - excluding UK)

Net increase since previous weekday (2017 cycle up to A level results day)



### A.21 Placed through Clearing only: Daily net change (from the EU - excluding UK)

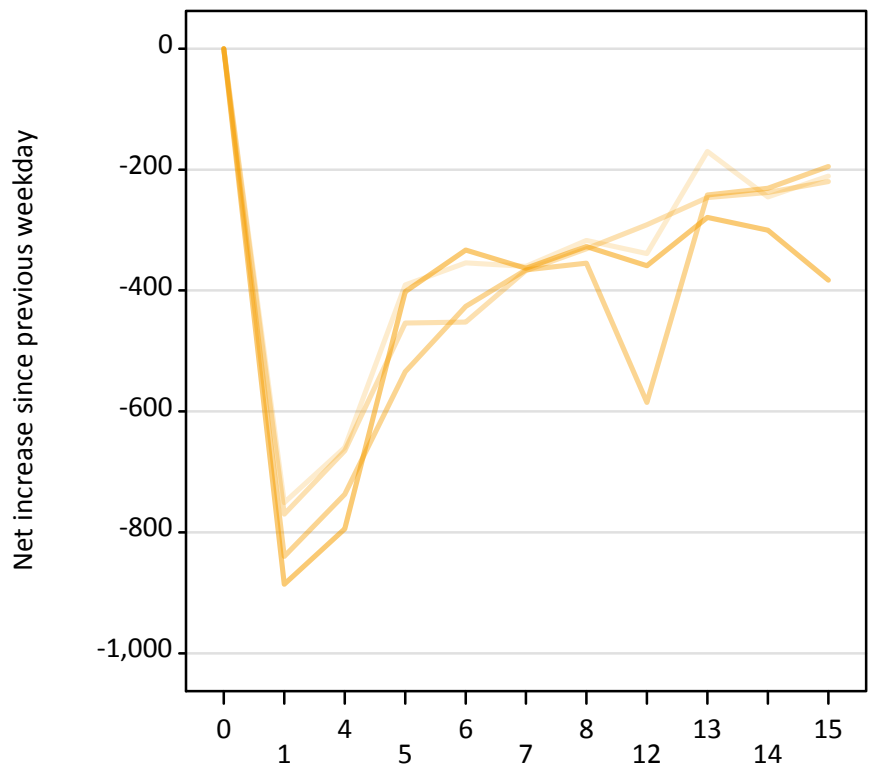
Net increase since previous weekday (2017 cycle up to A level results day)

Applicant status, days since A level results day		2013	2014	2015	2016	2017
Placed through Clearing only	0	0	0	0	0	0
	1	50	50	70	120	
	4	280	410	360	320	
	5	120	150	140	150	
	6	110	100	140	120	
	7	80	90	100	90	
	8	80	90	80	70	
	12	70	70	140	60	
	13	70	70	50	50	
	14	50	70	60	60	
	15	50	60	30	40	



### A.22 Holding Offer: Daily net change (from the EU - excluding UK)

Net increase since previous weekday (2017 cycle up to A level results day)



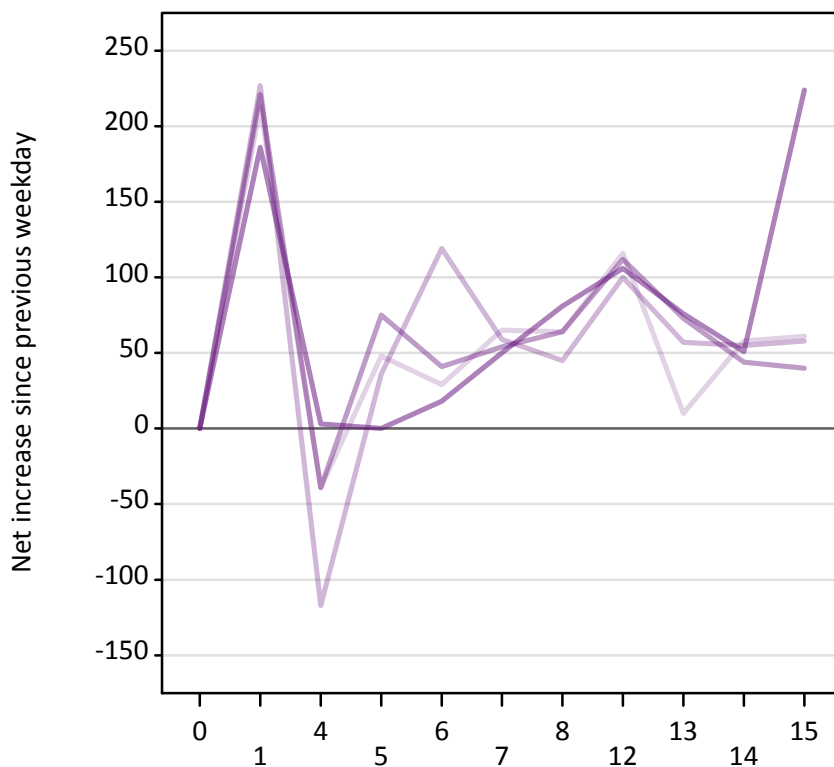
### A.23 Holding Offer: Daily net change (from the EU - excluding UK)

Net increase since previous weekday (2017 cycle up to A level results day)

Applicant status, days since A level results day		2013	2014	2015	2016	2017
Holding Offer	0	0	0	0	0	0
	1	-750	-770	-840	-890	
	4	-660	-670	-740	-790	
	5	-390	-450	-530	-400	
	6	-350	-450	-430	-330	
	7	-360	-370	-370	-360	
	8	-320	-330	-360	-330	
	12	-340	-290	-590	-360	
	13	-170	-250	-240	-280	
	14	-250	-240	-230	-300	
	15	-210	-220	-200	-380	

### A.24 Free to be placed in Clearing: Daily net change (from the EU - excluding UK)

Net increase since previous weekday (2017 cycle up to A level results day)



### A.25 Free to be placed in Clearing: Daily net change (from the EU - excluding UK)

Net increase since previous weekday (2017 cycle up to A level results day)

Applicant status, days since A level results day		2013	2014	2015	2016	2017
Free to be placed in Clearing	0	0	0	0	0	0
	1	210	230	220	190	
	4	-40	-120	-40	0	
	5	50	40	80	0	
	6	30	120	40	20	
	7	70	60	50	50	
	8	60	50	60	80	
	12	120	100	110	110	
	13	10	60	70	80	
	14	60	60	40	50	
	15	60	60	40	220	