

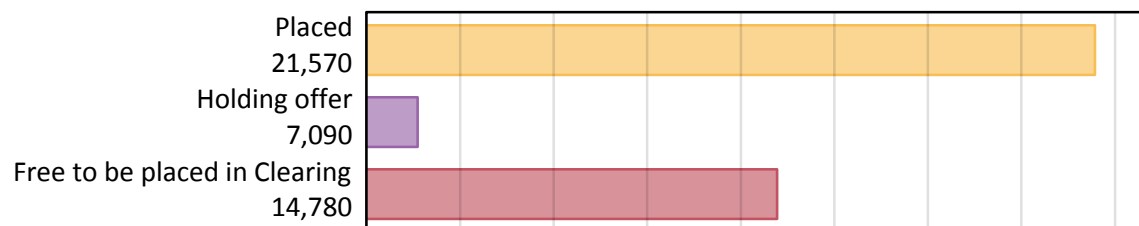
# Daily Clearing Analysis: Overview

## B7 Nursing analysis at 00:05 on Friday 17 August 2018 (1 day after A level results day)

### AB.1 Placed applicants to nursing from all domiciles, 2018 cycle

Applicant type	Status	2018
Main scheme	Placed (Clearing)	360
	Placed (Adjustment)	0
	Placed (Firm)	19,830
	Placed (Insurance)	390
	Placed (Other)	890
	Holding offer	7,090
	Free to be placed in Clearing	14,780
Direct to Clearing	Placed (Direct to Clearing)	110
	Other (Direct to Clearing)	350
All applicants	Placed	21,570

### AB.2 Summary of nursing applicants who are placed, holding offers or free to be placed in Clearing ( all domiciles )



### AB.3 Placed applicants to nursing from all domiciles: 1 day after A level results day

Placed applicants to nursing: difference between cycle and 2017 cycle



Note: The percentage change is not plotted in the above chart for groups with fewer than 30 placed applicants in any one cycle.

#### AB.4 Placed applicants to nursing from all domiciles: 1 day after A level results day

Placed applicants to nursing: applicants at 1 day after A level results day

Applicant type	Status	2009	2010	2011	2012	2013	2014	2015	2016	2017	2018
All applicants	Placed	19,180	21,830	18,820	18,600	19,280	21,460	21,320	23,310	22,110	21,570

#### AB.5 Placed applicants to nursing from all domiciles: 1 day after A level results day

Placed applicants to nursing: difference between cycle and 2017 cycle

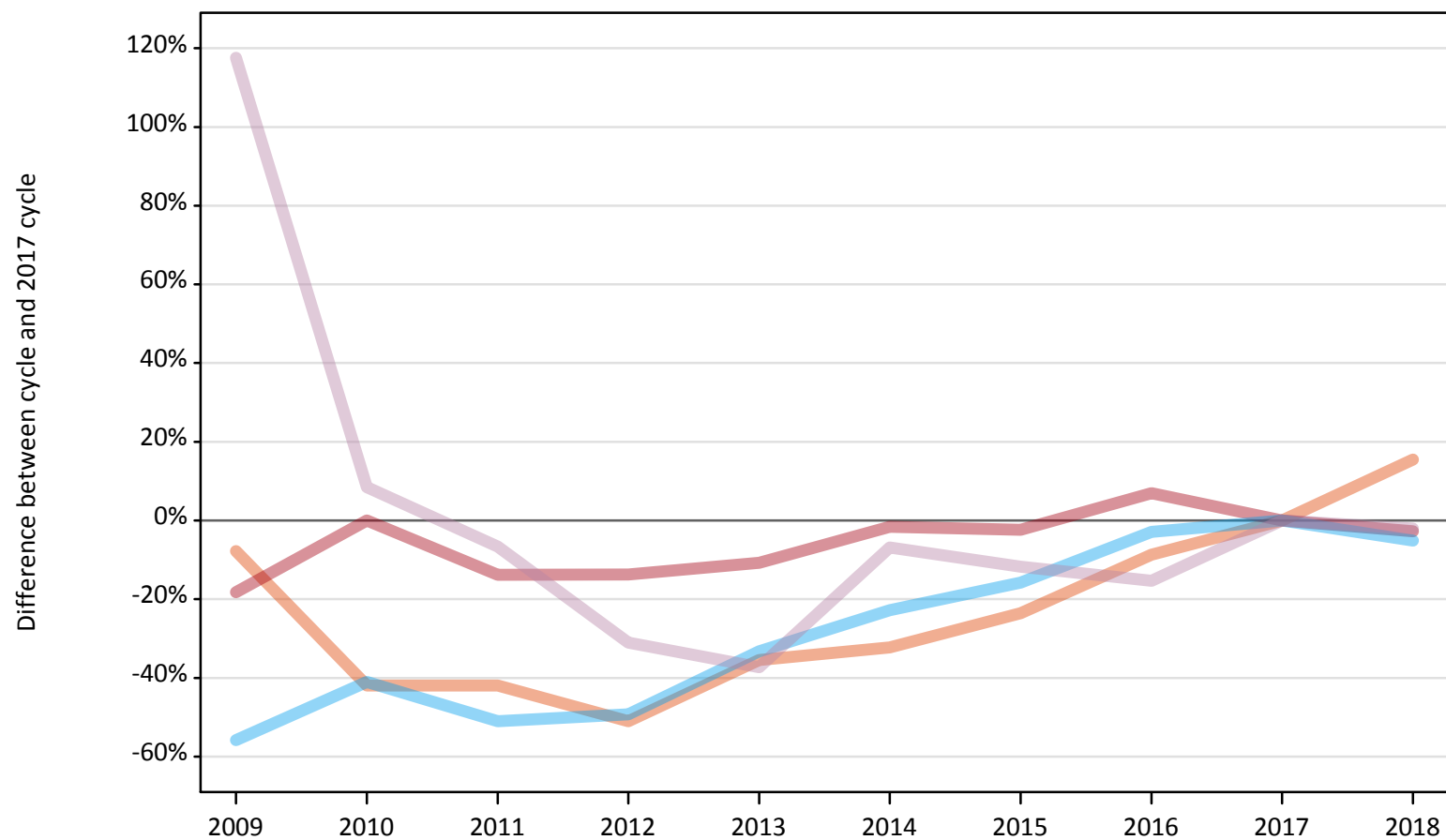
Applicant type	Status	2009	2010	2011	2012	2013	2014	2015	2016	2017	2018
All applicants	Placed	-13%	-1%	-15%	-16%	-13%	-3%	-4%	5%	0%	-2%

Note: The percentage change is not recorded in the above table for groups with fewer than 10 placed applicants in that cycle or in the 2017 cycle.

## AB.6 Placed main scheme applicants to nursing from all domiciles: 1 day after A level results day

All Main scheme placed routes (excluding Adjustment): difference between cycle and 2017 cycle

- Placed (Clearing)
- Placed (Firm)
- Placed (Insurance)
- Placed (Other)



Note: The percentage change is not plotted in the above chart for groups with fewer than 30 placed applicants in any one cycle.

**AB.7 Placed main scheme applicants to nursing from all domiciles: 1 day after A level results day**

All Main scheme placed routes (excluding Adjustment): applicants at 1 day after A level results day

Applicant type	Status	2009	2010	2011	2012	2013	2014	2015	2016	2017	2018
Main scheme	Placed (Clearing)	290	180	180	150	200	210	240	280	310	360
	Placed (Firm)	16,680	20,390	17,570	17,590	18,200	20,060	19,900	21,800	20,390	19,830
	Placed (Insurance)	180	240	200	210	280	320	350	400	410	390
	Placed (Other)	1,980	990	850	630	570	850	800	770	910	890

**AB.8 Placed main scheme applicants to nursing from all domiciles: 1 day after A level results day**

All Main scheme placed routes (excluding Adjustment): difference between cycle and 2017 cycle

Applicant type	Status	2009	2010	2011	2012	2013	2014	2015	2016	2017	2018
Main scheme	Placed (Clearing)	-8%	-42%	-42%	-51%	-35%	-32%	-24%	-9%	0%	15%
	Placed (Firm)	-18%	-0%	-14%	-14%	-11%	-2%	-2%	7%	0%	-3%
	Placed (Insurance)	-56%	-41%	-51%	-49%	-33%	-23%	-16%	-3%	0%	-5%
	Placed (Other)	118%	8%	-7%	-31%	-37%	-7%	-12%	-15%	0%	-2%

Note: The percentage change is not recorded in the above table for groups with fewer than 10 placed applicants in that cycle or in the 2017 cycle.

**AB.9 Main scheme applicants placed to nursing through adjustment: 1 day after A level results day**

Placed through adjustment: difference between cycle and 2017 cycle

**[This chart is not part of this report]**

**AB.10 Main scheme applicants placed to nursing through adjustment: 1 day after A level results day**

Placed through adjustment: applicants at 1 day after A level results day

Applicant type	Status	2009	2010	2011	2012	2013	2014	2015	2016	2017	2018
Main scheme	Placed (Adjustment)	0	0	0	0	0	0	0	0	0	0

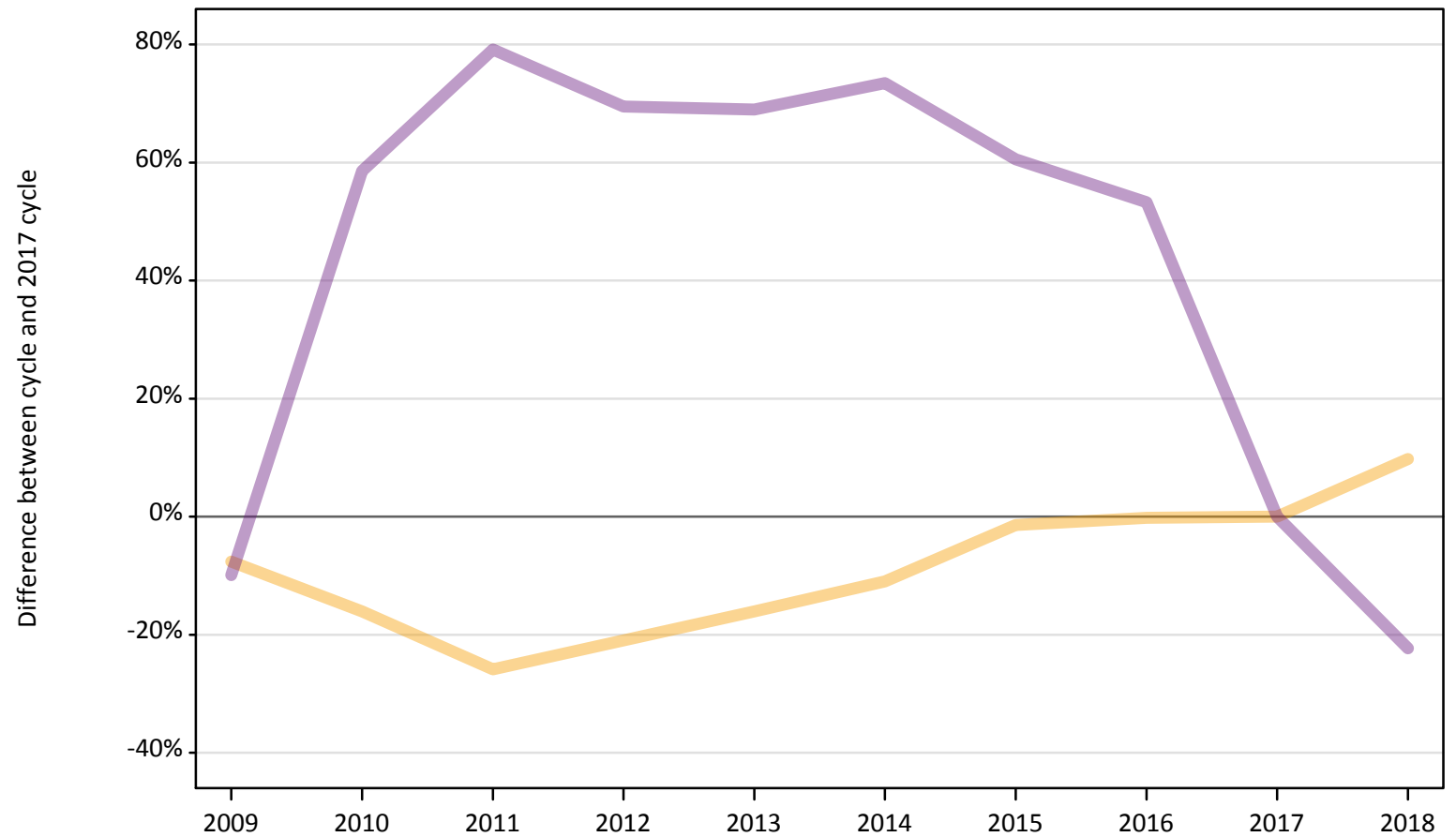
**AB.11 Main scheme applicants placed to nursing through adjustment: 1 day after A level results day**

Placed through adjustment: difference between cycle and 2017 cycle

**[This table is not part of this report]**

**AB.12 Main scheme applicants to nursing not currently placed from all domiciles: 1 day after A level results day**  
Applicants in unplaced states: difference between cycle and 2017 cycle

— Holding offer  
— Free to be placed in Clearing



Note: The percentage change is not plotted in the above chart for groups with fewer than 30 unplaced applicants in any one cycle.

**AB.13 Main scheme applicants to nursing not currently placed from all domiciles: 1 day after A level results day**

Applicants in unplaced states: applicants at 1 day after A level results day

Applicant type	Status	2009	2010	2011	2012	2013	2014	2015	2016	2017	2018
Main scheme	Holding offer	5,970	5,420	4,790	5,110	5,420	5,750	6,370	6,450	6,460	7,090
	Free to be placed in Clearing	17,140	30,170	34,090	32,260	32,160	33,000	30,550	29,170	19,030	14,780

**AB.14 Main scheme applicants to nursing not currently placed from all domiciles: 1 day after A level results day**

Applicants in unplaced states: difference between cycle and 2017 cycle

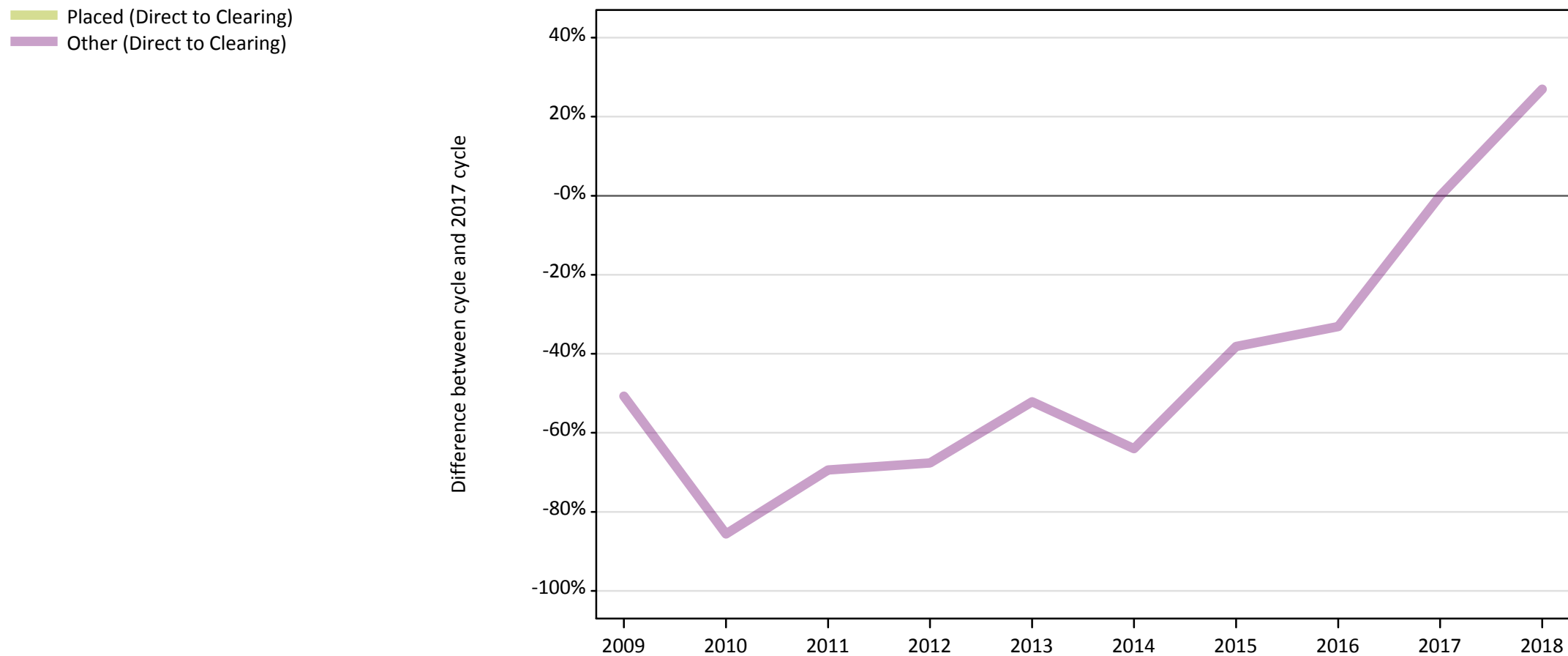
Applicant type	Status	2009	2010	2011	2012	2013	2014	2015	2016	2017	2018
Main scheme	Holding offer	-8%	-16%	-26%	-21%	-16%	-11%	-1%	-0%	0%	10%
	Free to be placed in Clearing	-10%	59%	79%	70%	69%	73%	61%	53%	0%	-22%

Note: The percentage change is not recorded in the above table for groups with fewer than 10 unplaced applicants in that cycle or in the 2017 cycle.



## AB.15 Direct to Clearing applicants from all domiciles: 1 day after A level results day

Direct to Clearing: difference between cycle and 2017 cycle



Note: The percentage change is not plotted in the above chart for groups with fewer than 30 placed applicants in any one cycle.

**AB.16 Direct to Clearing applicants from all domiciles: 1 day after A level results day**

Direct to Clearing 1 day after A level results day

Applicant type	Status	2009	2010	2011	2012	2013	2014	2015	2016	2017	2018
Direct to Clearing	Placed (Direct to Clearing)	50	30	10	30	40	20	30	60	80	110
	Other (Direct to Clearing)	140	40	90	90	130	100	170	190	280	350

**AB.17 Direct to Clearing applicants from all domiciles: 1 day after A level results day**

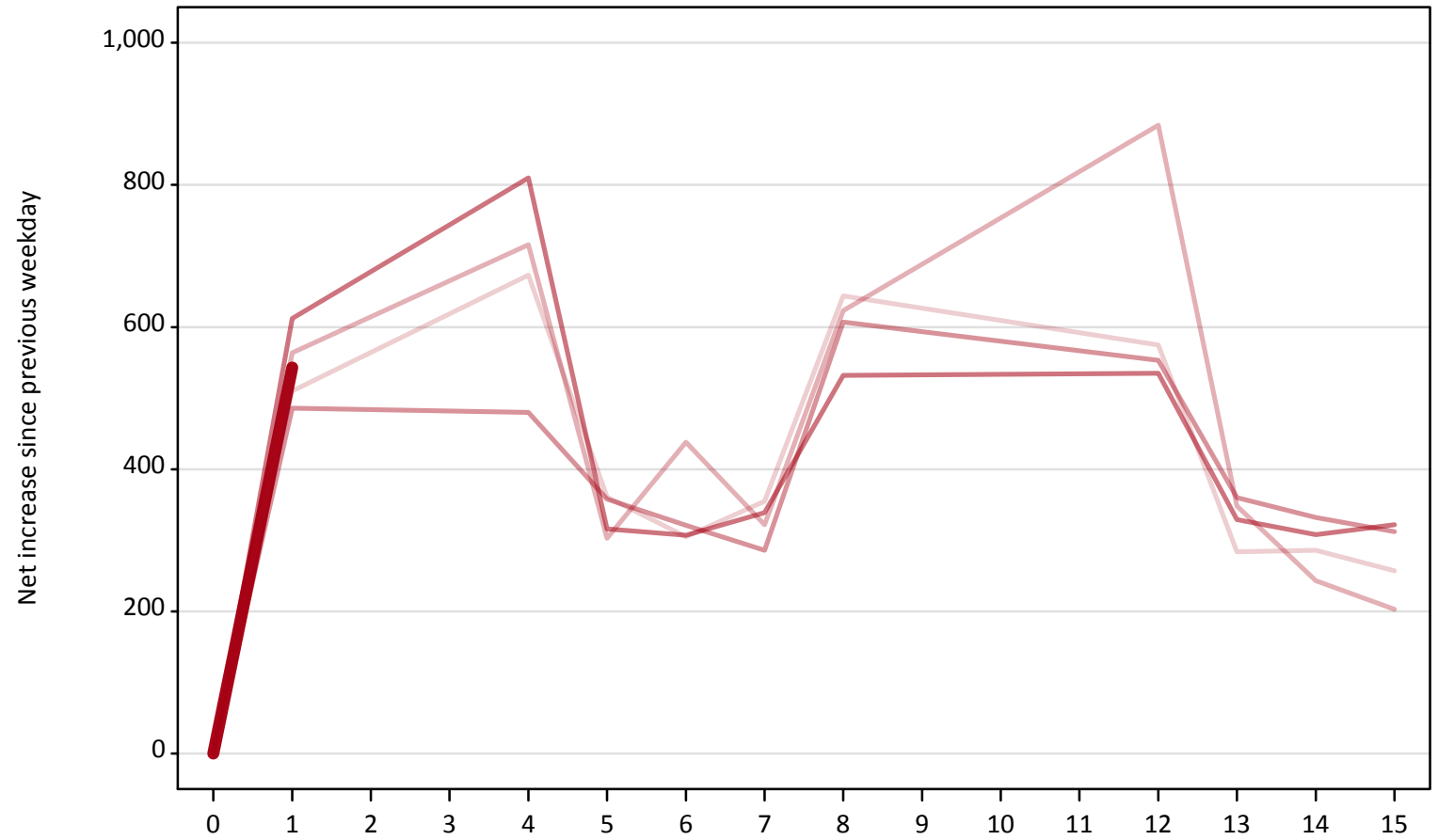
Direct to Clearing: difference between cycle and 2017 cycle

Applicant type	Status	2009	2010	2011	2012	2013	2014	2015	2016	2017	2018
Direct to Clearing	Placed (Direct to Clearing)	-40%	-67%	-84%	-69%	-56%	-75%	-58%	-32%	0%	30%
	Other (Direct to Clearing)	-51%	-86%	-69%	-68%	-52%	-64%	-38%	-33%	0%	27%

Note: The percentage change is not recorded in the above table for groups with fewer than 10 placed applicants in that cycle or in the 2017 cycle.

**AB.18 All Placed: Daily net change (from all domiciles)**  
Net increase since previous weekday (2018 cycle up to 1 day after A level results day)

- 2014
- 2015
- 2016
- 2017
- 2018**



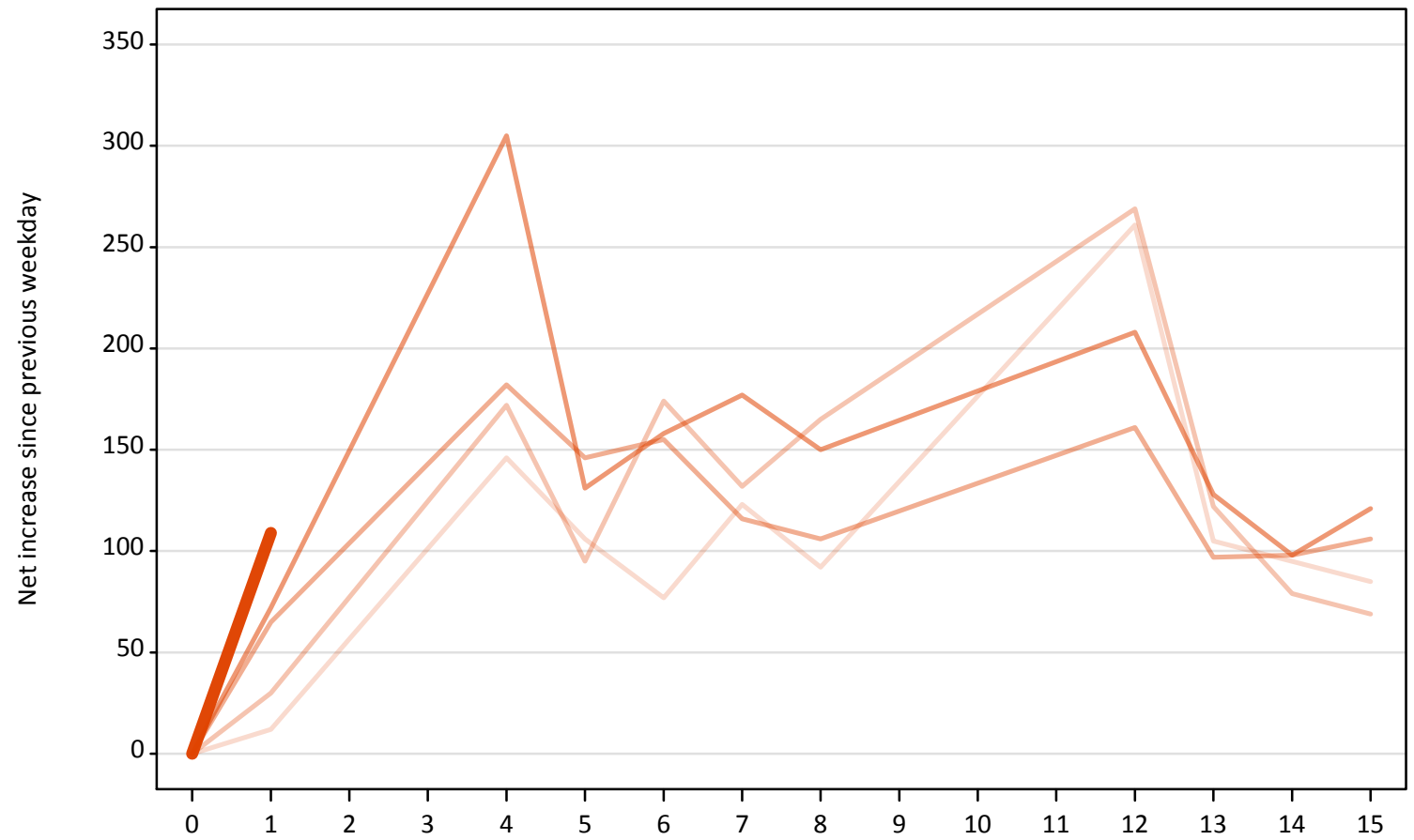
**AB.19 All Placed: Daily net change (from all domiciles)**

Net increase since previous weekday (2018 cycle up to 1 day after A level results day)

Applicant status, days since A level results day		2014	2015	2016	2017	2018
All Placed	0	0	0	0	0	0
	1	510	560	490	610	540
	4	670	720	480	810	
	5	360	300	360	320	
	6	310	440	320	310	
	7	360	320	290	340	
	8	640	620	610	530	
	12	580	880	550	540	
	13	280	350	360	330	
	14	290	240	330	310	
	15	260	200	310	320	

**AB.20 Placed through Clearing only: Daily net change (from all domiciles)**  
Net increase since previous weekday (2018 cycle up to 1 day after A level results day)

- 2014
- 2015
- 2016
- 2017
- 2018**



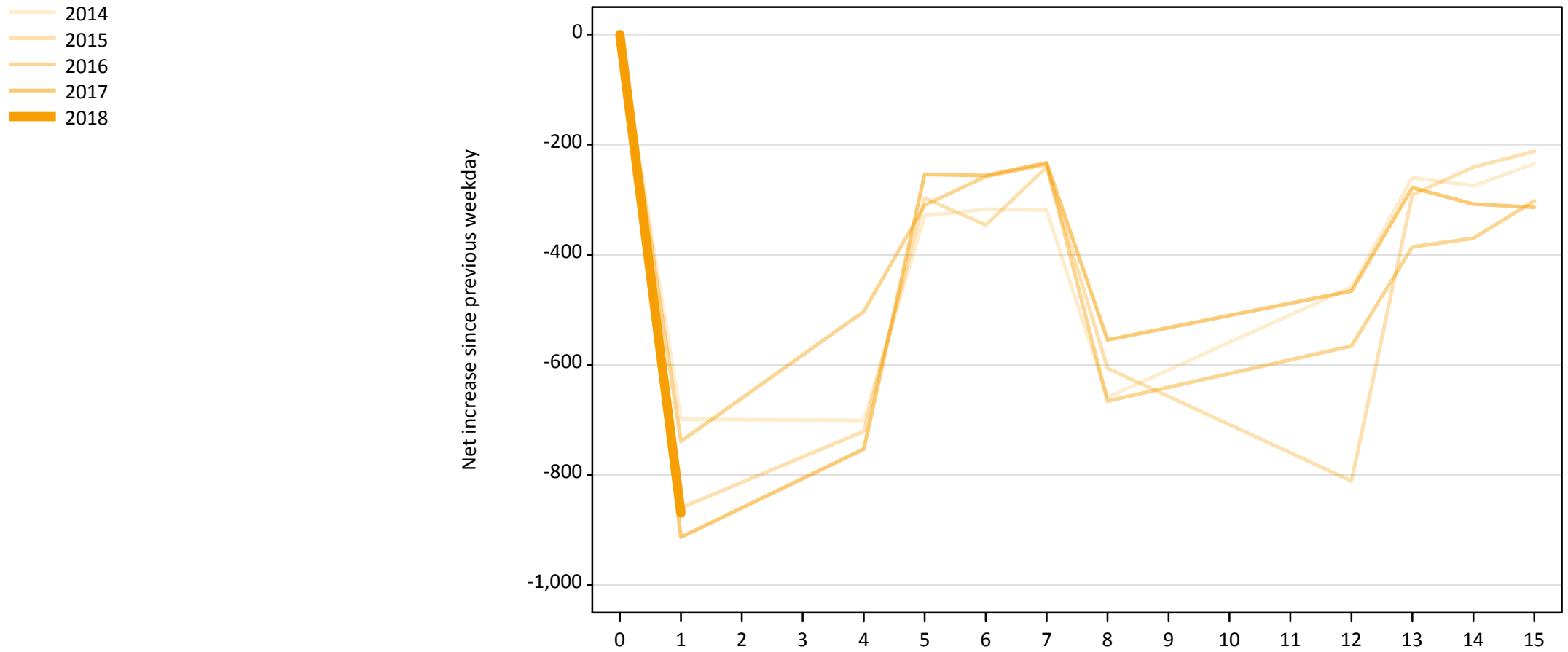
**AB.21 Placed through Clearing only: Daily net change (from all domiciles)**

Net increase since previous weekday (2018 cycle up to 1 day after A level results day)

Applicant status, days since A level results day		2014	2015	2016	2017	2018
Placed through Clearing only	0	0	0	0	0	0
	1	10	30	70	70	110
	4	150	170	180	310	
	5	110	100	150	130	
	6	80	170	160	160	
	7	120	130	120	180	
	8	90	170	110	150	
	12	260	270	160	210	
	13	110	120	100	130	
	14	100	80	100	100	
	15	90	70	110	120	

## AB.22 Holding Offer: Daily net change (from all domiciles)

Net increase since previous weekday (2018 cycle up to 1 day after A level results day)



**AB.23 Holding Offer: Daily net change (from all domiciles)**

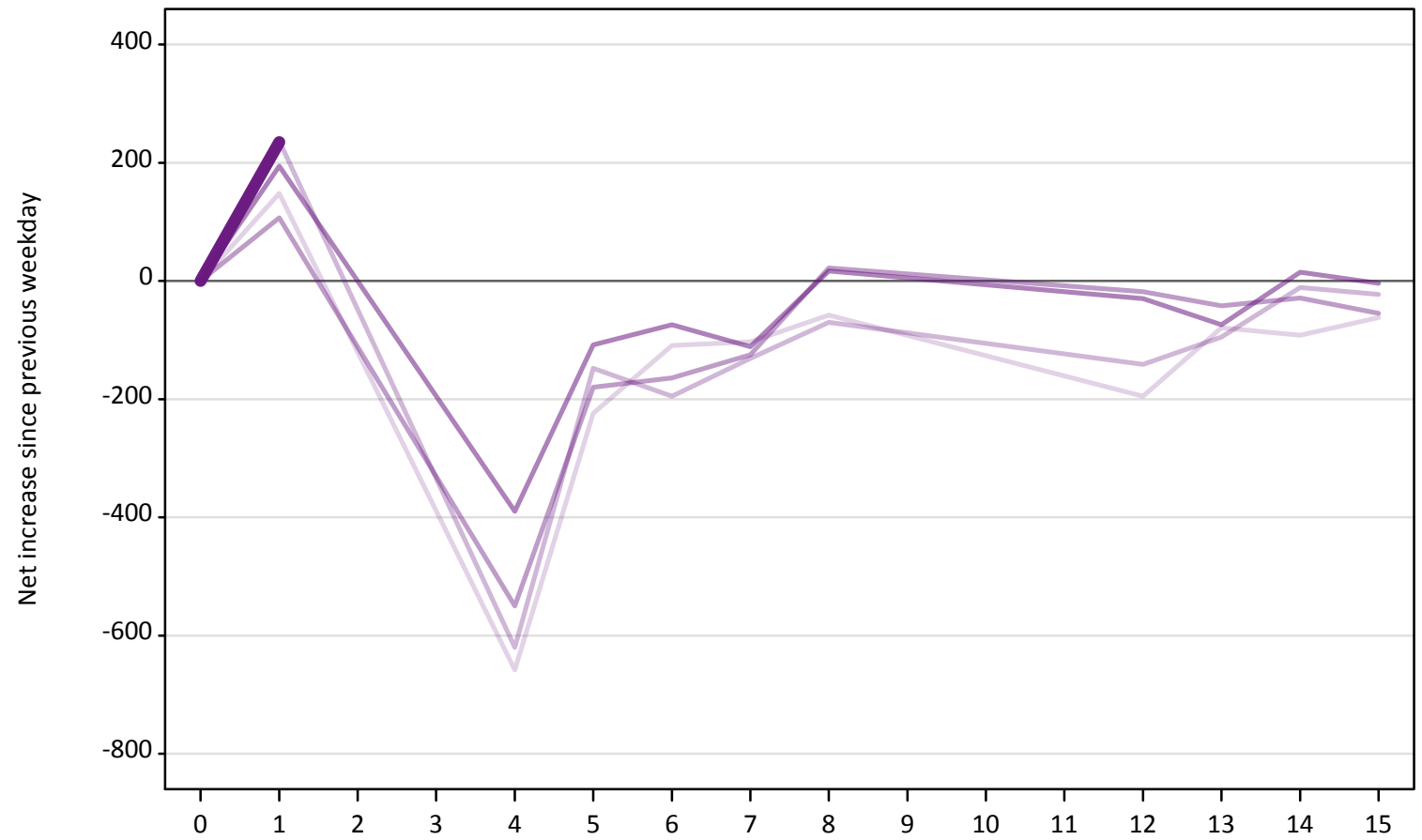
Net increase since previous weekday (2018 cycle up to 1 day after A level results day)

Applicant status, days since A level results day		2014	2015	2016	2017	2018
Holding Offer	0	0	0	0	0	0
	1	-700	-860	-740	-910	-870
	4	-700	-720	-500	-750	
	5	-330	-300	-310	-250	
	6	-320	-350	-260	-260	
	7	-320	-240	-240	-230	
	8	-660	-610	-670	-560	
	12	-460	-810	-570	-470	
	13	-260	-290	-390	-280	
	14	-280	-240	-370	-310	
	15	-240	-210	-300	-310	



**AB.24 Free to be placed in Clearing: Daily net change (from all domiciles)**  
Net increase since previous weekday (2018 cycle up to 1 day after A level results day)

- 2014
- 2015
- 2016
- 2017
- 2018



**AB.25 Free to be placed in Clearing: Daily net change (from all domiciles)**  
 Net increase since previous weekday (2018 cycle up to 1 day after A level results day)

Applicant status, days since A level results day		2014	2015	2016	2017	2018
Free to be placed in Clearing	0	0	0	0	0	0
	1	150	240	110	190	240
	4	-660	-620	-550	-390	
	5	-220	-150	-180	-110	
	6	-110	-200	-160	-70	
	7	-100	-130	-130	-110	
	8	-60	-70	20	20	
	12	-200	-140	-20	-30	
	13	-80	-100	-40	-70	
	14	-90	-10	-30	20	
	15	-60	-20	-60	0	