

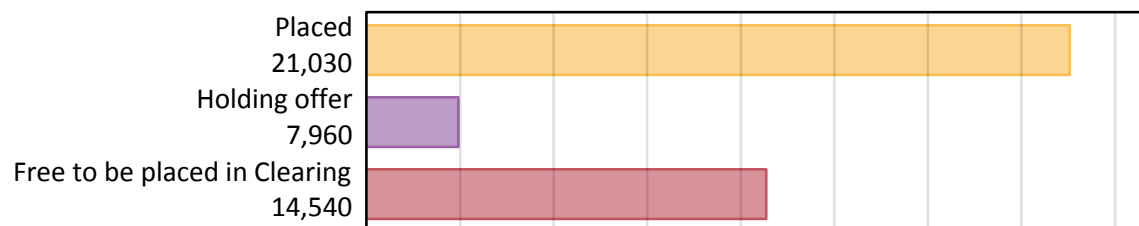
Daily Clearing Analysis: Overview

B7 Nursing analysis at 00:05 on Thursday 16 August 2018 (A level results day)

AB.1 Placed applicants to nursing from all domiciles, 2018 cycle

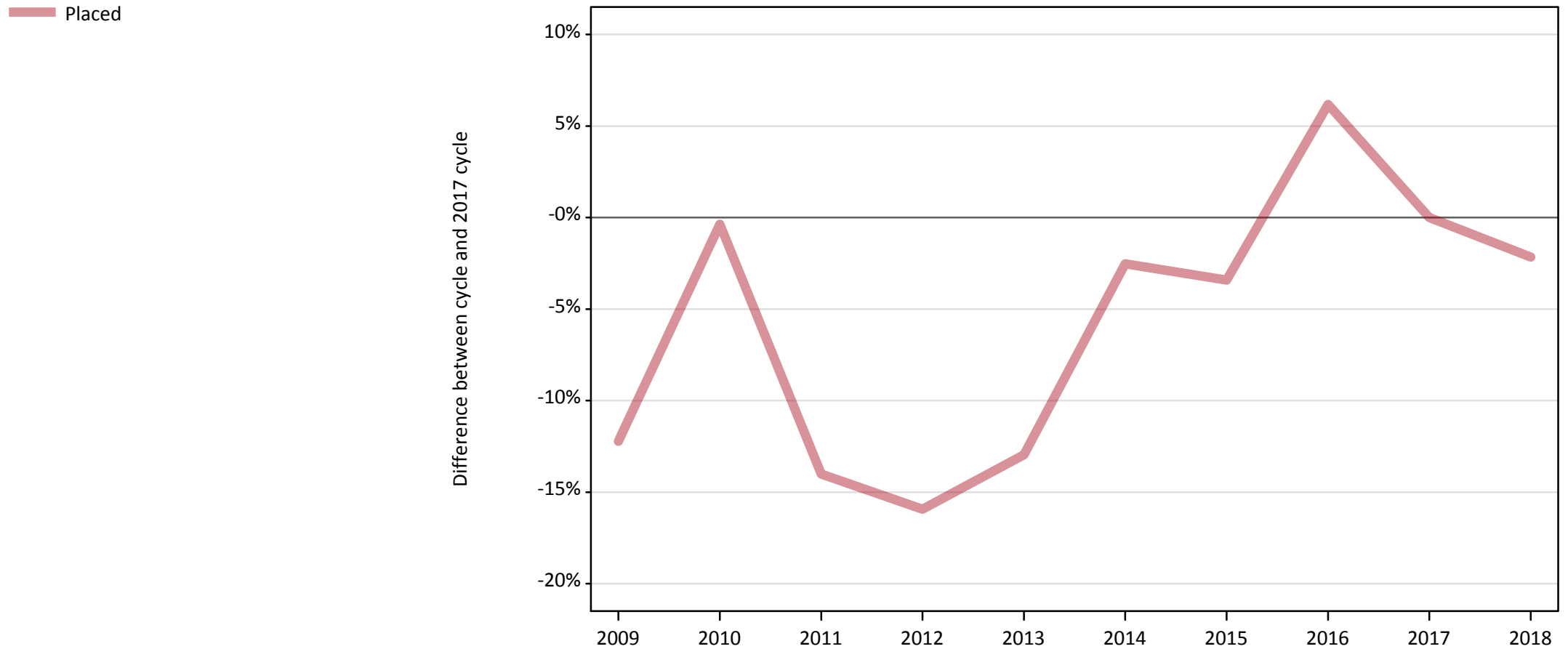
Applicant type	Status	2018
Main scheme	Placed (Clearing)	260
	Placed (Adjustment)	0
	Placed (Firm)	19,490
	Placed (Insurance)	310
	Placed (Other)	880
	Holding offer	7,960
	Free to be placed in Clearing	14,540
Direct to Clearing	Placed (Direct to Clearing)	90
	Other (Direct to Clearing)	260
All applicants	Placed	21,030

AB.2 Summary of nursing applicants who are placed, holding offers or free to be placed in Clearing (all domiciles)



AB.3 Placed applicants to nursing from all domiciles: A level results day

Placed applicants to nursing: difference between cycle and 2017 cycle



Note: The percentage change is not plotted in the above chart for groups with fewer than 30 placed applicants in any one cycle.

AB.4 Placed applicants to nursing from all domiciles: A level results day

Placed applicants to nursing: applicants at A level results day

Applicant type	Status	2009	2010	2011	2012	2013	2014	2015	2016	2017	2018
All applicants	Placed	18,870	21,410	18,480	18,070	18,710	20,950	20,760	22,820	21,490	21,030

AB.5 Placed applicants to nursing from all domiciles: A level results day

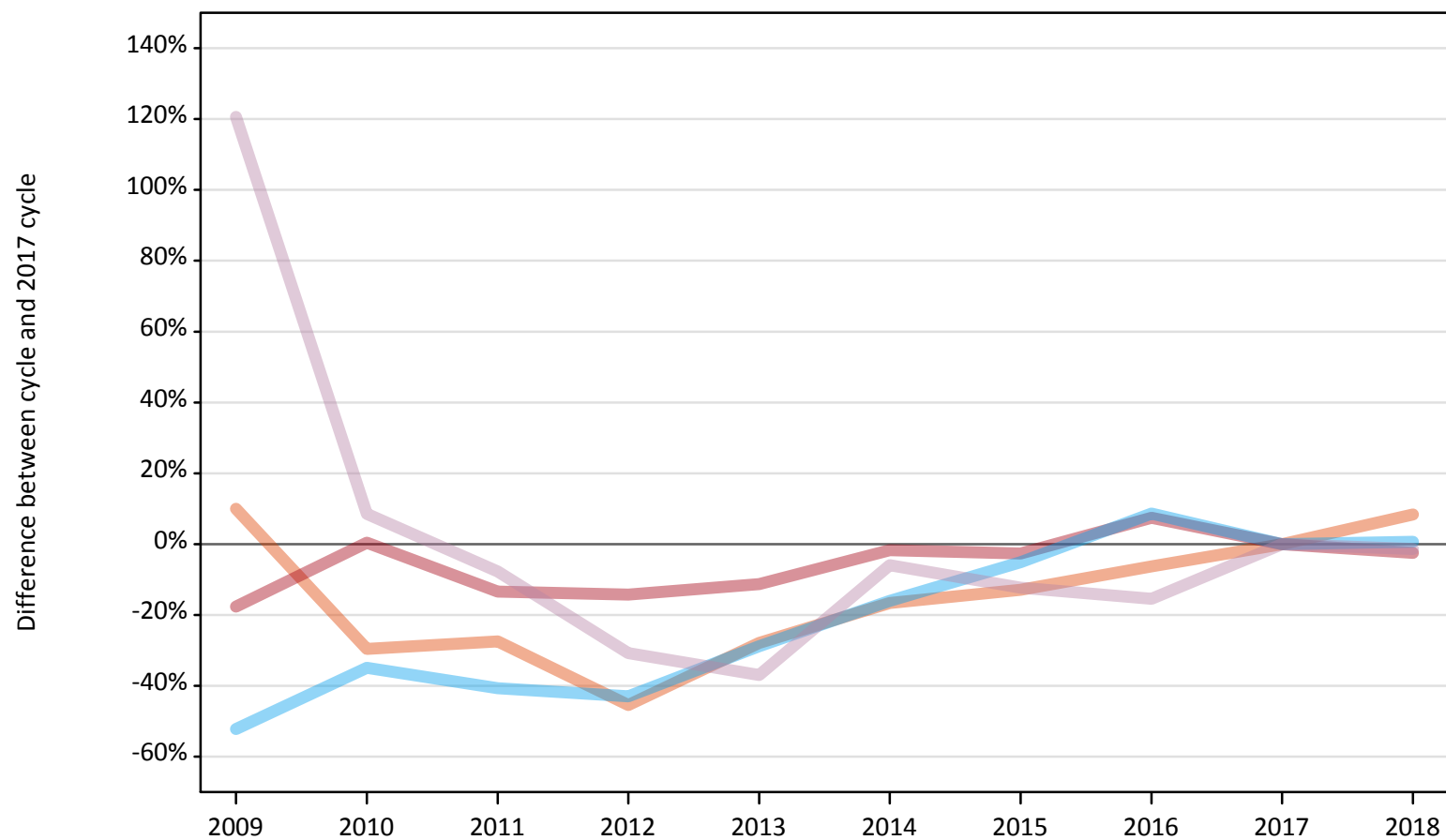
Placed applicants to nursing: difference between cycle and 2017 cycle

Applicant type	Status	2009	2010	2011	2012	2013	2014	2015	2016	2017	2018
All applicants	Placed	-12%	-0%	-14%	-16%	-13%	-3%	-3%	6%	0%	-2%

Note: The percentage change is not recorded in the above table for groups with fewer than 10 placed applicants in that cycle or in the 2017 cycle.

AB.6 Placed main scheme applicants to nursing from all domiciles: A level results day
All Main scheme placed routes (excluding Adjustment): difference between cycle and 2017 cycle

- Placed (Clearing)
- Placed (Firm)
- Placed (Insurance)
- Placed (Other)



Note: The percentage change is not plotted in the above chart for groups with fewer than 30 placed applicants in any one cycle.

AB.7 Placed main scheme applicants to nursing from all domiciles: A level results day

All Main scheme placed routes (excluding Adjustment): applicants at A level results day

Applicant type	Status	2009	2010	2011	2012	2013	2014	2015	2016	2017	2018
Main scheme	Placed (Clearing)	260	170	170	130	170	200	210	230	240	260
	Placed (Firm)	16,450	20,050	17,290	17,120	17,720	19,630	19,440	21,460	19,970	19,490
	Placed (Insurance)	150	200	190	180	220	260	300	340	310	310
	Placed (Other)	1,960	960	820	620	560	840	780	750	890	880

AB.8 Placed main scheme applicants to nursing from all domiciles: A level results day

All Main scheme placed routes (excluding Adjustment): difference between cycle and 2017 cycle

Applicant type	Status	2009	2010	2011	2012	2013	2014	2015	2016	2017	2018
Main scheme	Placed (Clearing)	10%	-30%	-28%	-45%	-28%	-17%	-13%	-6%	0%	8%
	Placed (Firm)	-18%	0%	-13%	-14%	-11%	-2%	-3%	7%	0%	-2%
	Placed (Insurance)	-52%	-35%	-41%	-43%	-29%	-16%	-5%	9%	0%	1%
	Placed (Other)	121%	9%	-8%	-31%	-37%	-6%	-12%	-15%	0%	-1%

Note: The percentage change is not recorded in the above table for groups with fewer than 10 placed applicants in that cycle or in the 2017 cycle.

AB.9 Main scheme applicants placed to nursing through adjustment: A level results day

Placed through adjustment: difference between cycle and 2017 cycle

[This chart is not part of this report]

AB.10 Main scheme applicants placed to nursing through adjustment: A level results day

Placed through adjustment: applicants at A level results day

[Analysis on placed by adjustment available from 18 August 2018]

AB.11 Main scheme applicants placed to nursing through adjustment: A level results day

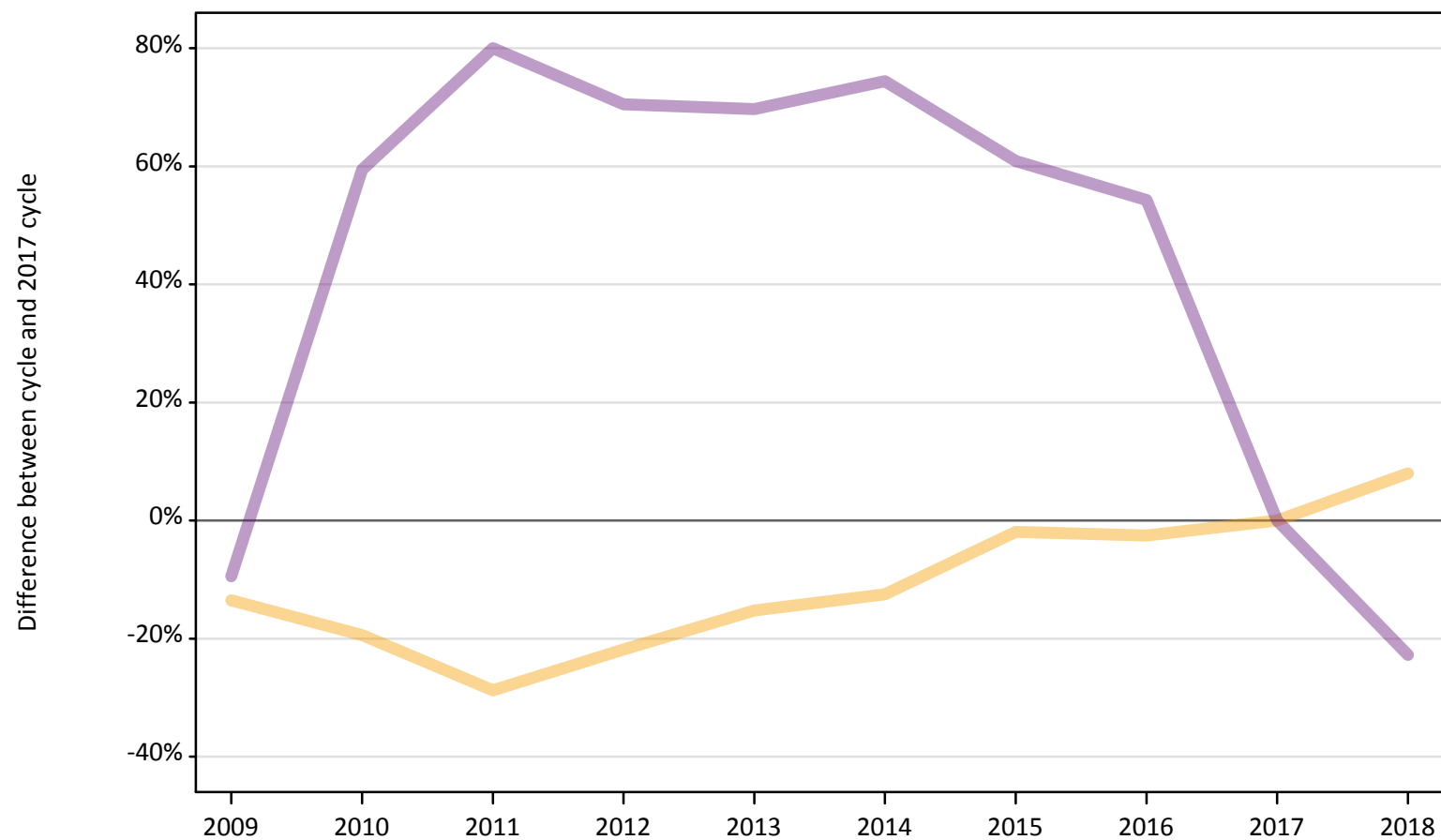
Placed through adjustment: difference between cycle and 2017 cycle

[This table is not part of this report]

AB.12 Main scheme applicants to nursing not currently placed from all domiciles: A level results day

Applicants in unplaced states: difference between cycle and 2017 cycle

— Holding offer
— Free to be placed in Clearing



Note: The percentage change is not plotted in the above chart for groups with fewer than 30 unplaced applicants in any one cycle.

AB.13 Main scheme applicants to nursing not currently placed from all domiciles: A level results day

Applicants in unplaced states: applicants at A level results day

Applicant type	Status	2009	2010	2011	2012	2013	2014	2015	2016	2017	2018
Main scheme	Holding offer	6,380	5,940	5,250	5,760	6,250	6,450	7,230	7,190	7,370	7,960
	Free to be placed in Clearing	17,050	30,030	33,900	32,110	31,960	32,850	30,310	29,060	18,830	14,540

AB.14 Main scheme applicants to nursing not currently placed from all domiciles: A level results day

Applicants in unplaced states: difference between cycle and 2017 cycle

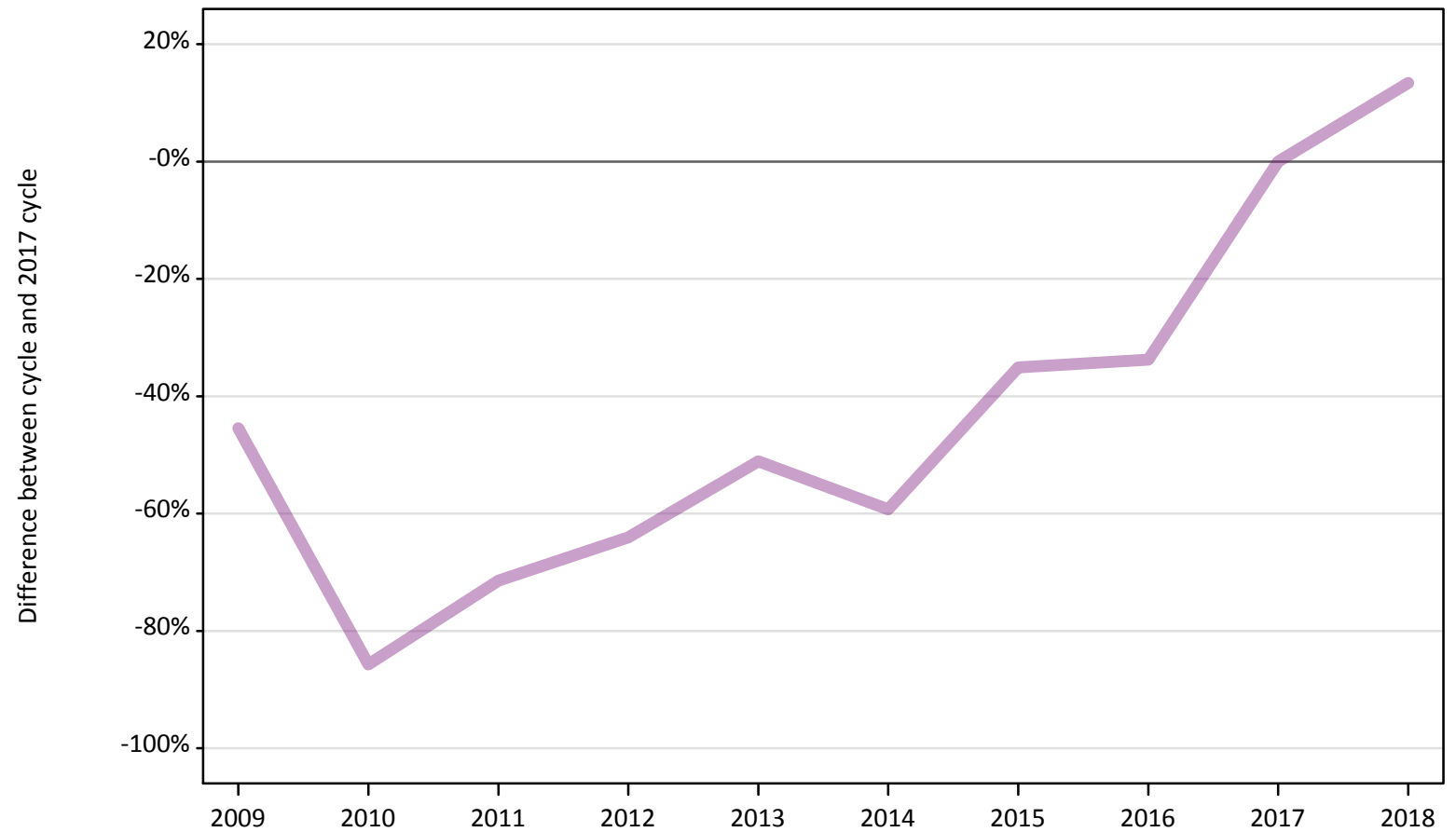
Applicant type	Status	2009	2010	2011	2012	2013	2014	2015	2016	2017	2018
Main scheme	Holding offer	-14%	-19%	-29%	-22%	-15%	-13%	-2%	-3%	0%	8%
	Free to be placed in Clearing	-9%	59%	80%	70%	70%	74%	61%	54%	0%	-23%

Note: The percentage change is not recorded in the above table for groups with fewer than 10 unplaced applicants in that cycle or in the 2017 cycle.

AB.15 Direct to Clearing applicants from all domiciles: A level results day

Direct to Clearing: difference between cycle and 2017 cycle

- Placed (Direct to Clearing)
- Other (Direct to Clearing)



Note: The percentage change is not plotted in the above chart for groups with fewer than 30 placed applicants in any one cycle.

AB.16 Direct to Clearing applicants from all domiciles: A level results day

Direct to Clearing A level results day

Applicant type	Status	2009	2010	2011	2012	2013	2014	2015	2016	2017	2018
Direct to Clearing	Placed (Direct to Clearing)	50	20	10	20	30	20	30	50	80	90
	Other (Direct to Clearing)	130	30	70	80	110	90	150	150	230	260

AB.17 Direct to Clearing applicants from all domiciles: A level results day

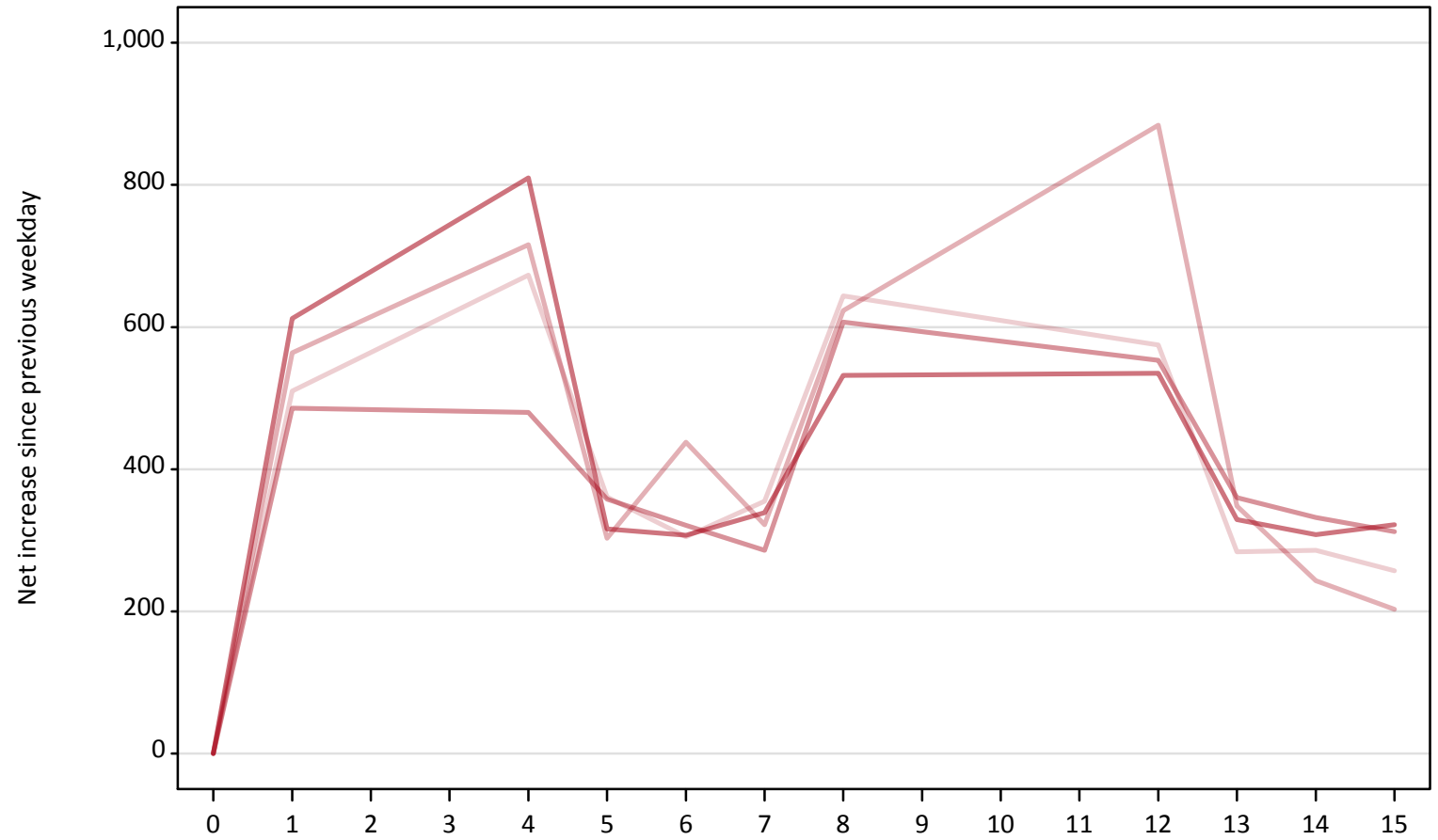
Direct to Clearing: difference between cycle and 2017 cycle

Applicant type	Status	2009	2010	2011	2012	2013	2014	2015	2016	2017	2018
Direct to Clearing	Placed (Direct to Clearing)	-39%	-70%	-84%	-72%	-58%	-77%	-59%	-39%	0%	19%
	Other (Direct to Clearing)	-45%	-86%	-71%	-64%	-51%	-59%	-35%	-34%	0%	13%

Note: The percentage change is not recorded in the above table for groups with fewer than 10 placed applicants in that cycle or in the 2017 cycle.

AB.18 All Placed: Daily net change (from all domiciles)
Net increase since previous weekday (2018 cycle up to A level results day)

- 2014
- 2015
- 2016
- 2017
- 2018



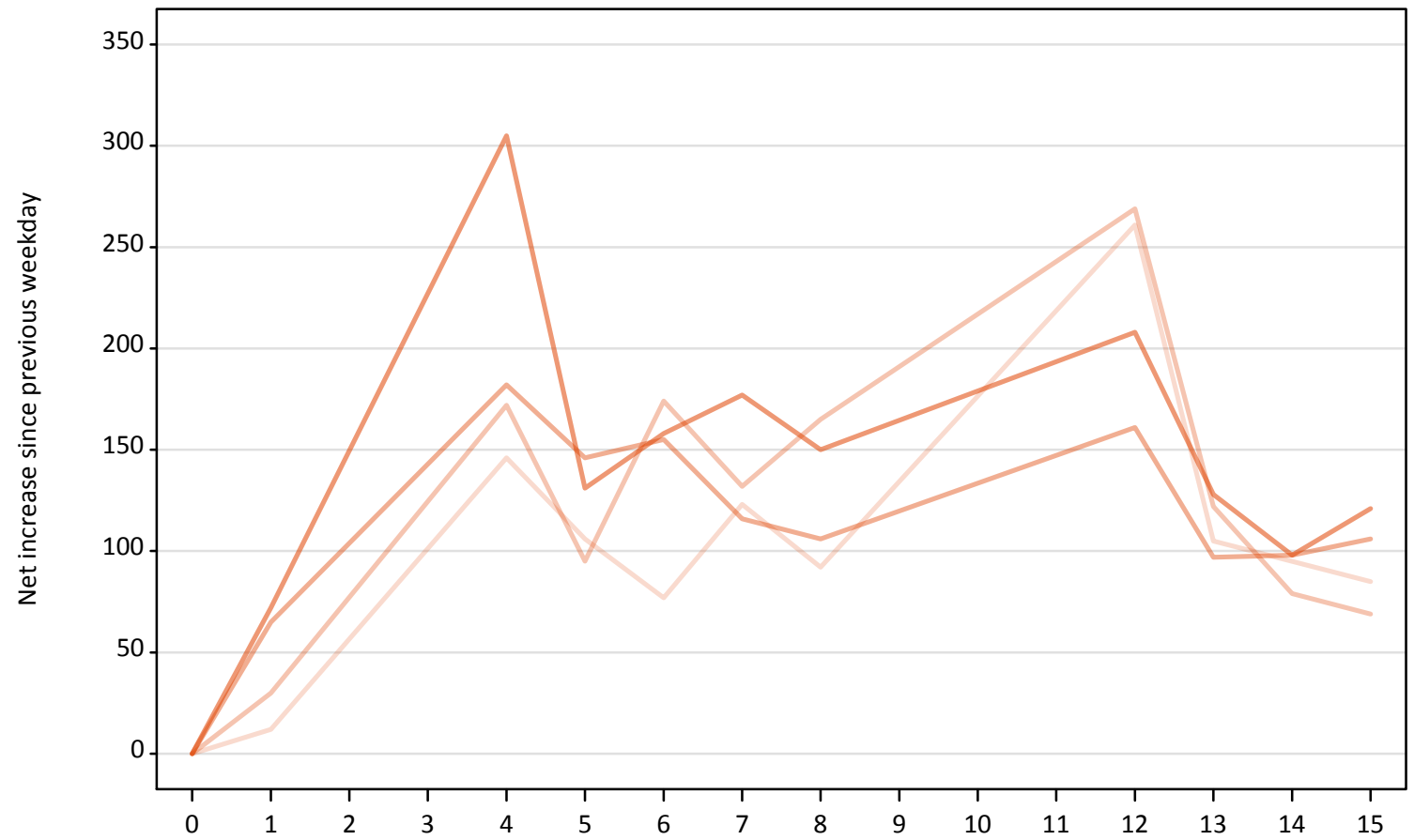
AB.19 All Placed: Daily net change (from all domiciles)

Net increase since previous weekday (2018 cycle up to A level results day)

Applicant status, days since A level results day		2014	2015	2016	2017	2018
All Placed	0	0	0	0	0	0
	1	510	560	490	610	
	4	670	720	480	810	
	5	360	300	360	320	
	6	310	440	320	310	
	7	360	320	290	340	
	8	640	620	610	530	
	12	580	880	550	540	
	13	280	350	360	330	
	14	290	240	330	310	
	15	260	200	310	320	

AB.20 Placed through Clearing only: Daily net change (from all domiciles)
Net increase since previous weekday (2018 cycle up to A level results day)

- 2014
- 2015
- 2016
- 2017
- 2018



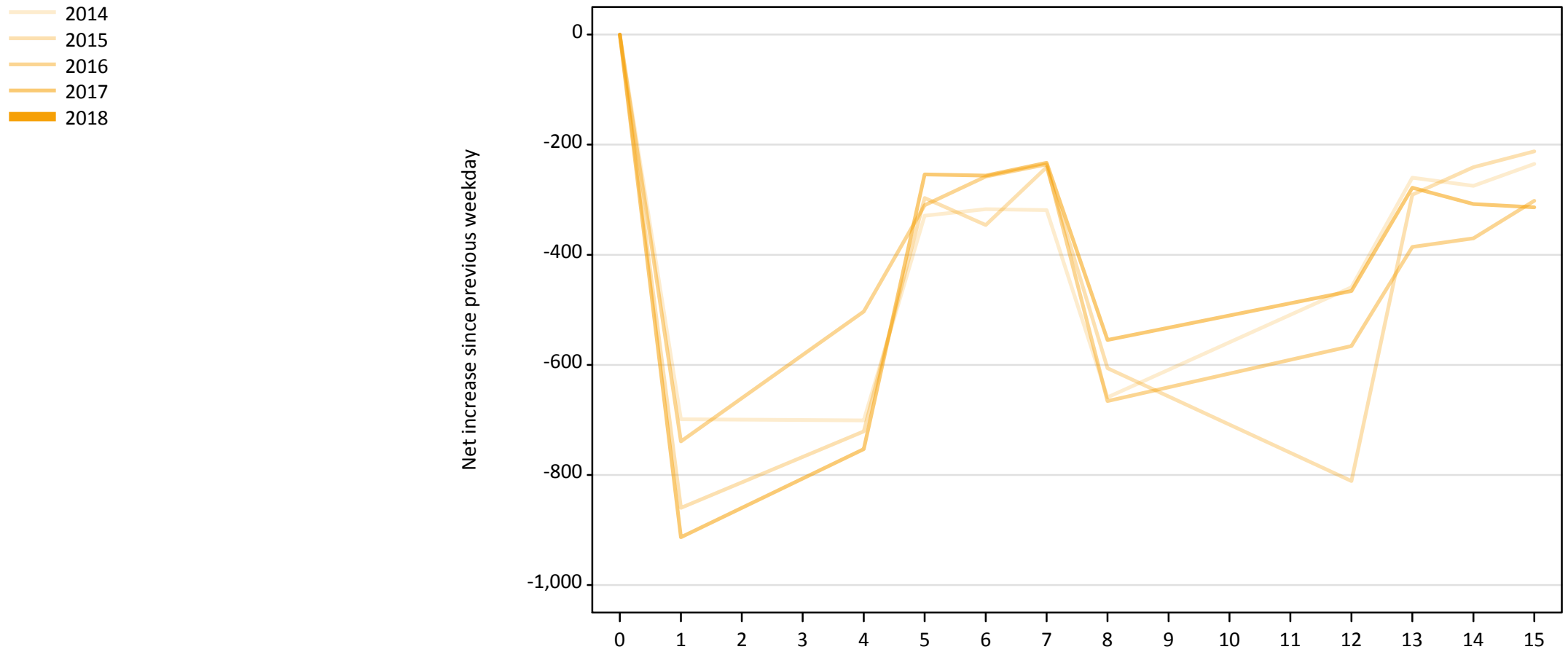
AB.21 Placed through Clearing only: Daily net change (from all domiciles)

Net increase since previous weekday (2018 cycle up to A level results day)

Applicant status, days since A level results day		2014	2015	2016	2017	2018
Placed through Clearing only	0	0	0	0	0	0
	1	10	30	70	70	
	4	150	170	180	310	
	5	110	100	150	130	
	6	80	170	160	160	
	7	120	130	120	180	
	8	90	170	110	150	
	12	260	270	160	210	
	13	110	120	100	130	
	14	100	80	100	100	
	15	90	70	110	120	

AB.22 Holding Offer: Daily net change (from all domiciles)

Net increase since previous weekday (2018 cycle up to A level results day)



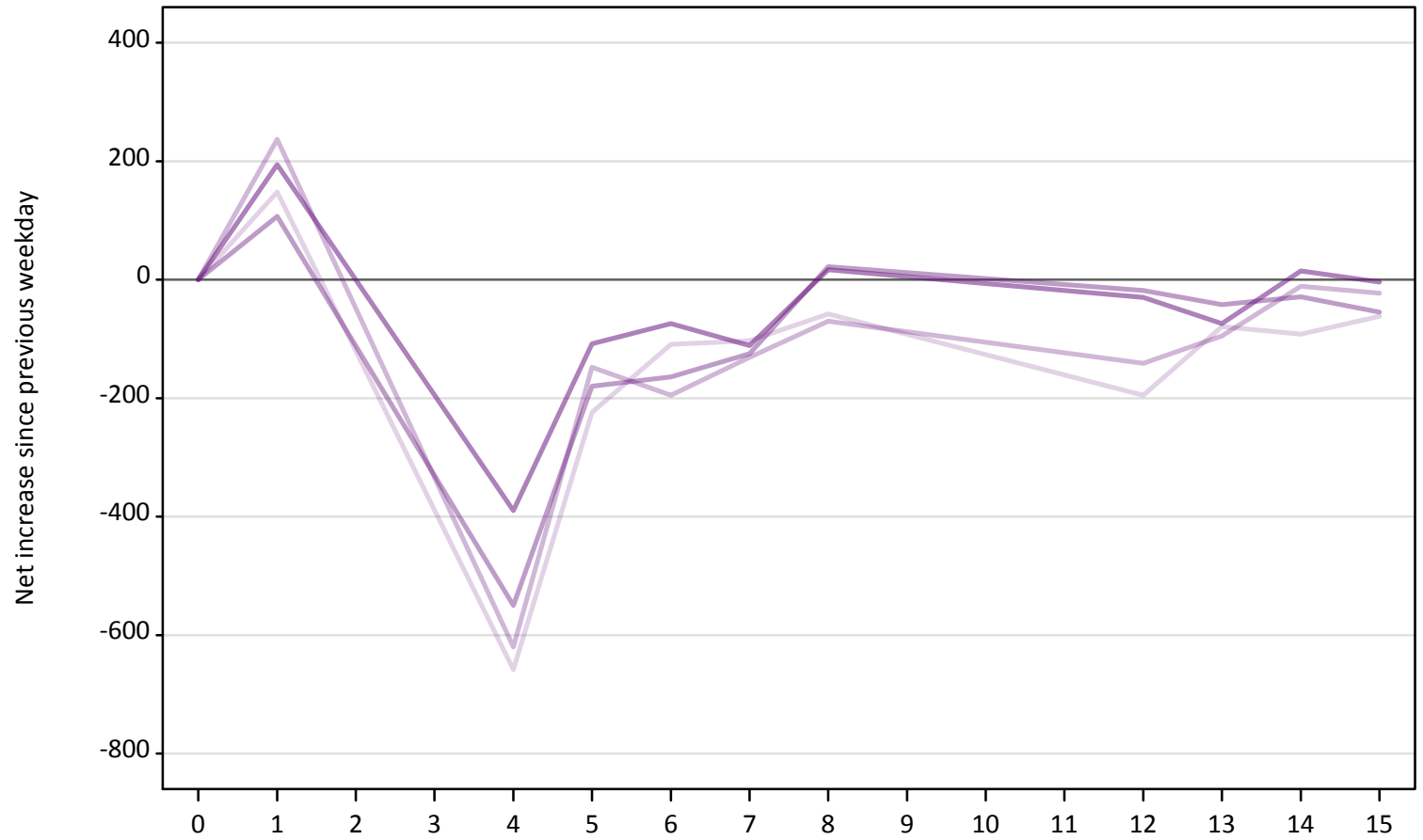
AB.23 Holding Offer: Daily net change (from all domiciles)

Net increase since previous weekday (2018 cycle up to A level results day)

Applicant status, days since A level results day	2014	2015	2016	2017	2018
Holding Offer	0	0	0	0	0
	1	-700	-860	-740	-910
	4	-700	-720	-500	-750
	5	-330	-300	-310	-250
	6	-320	-350	-260	-260
	7	-320	-240	-240	-230
	8	-660	-610	-670	-560
	12	-460	-810	-570	-470
	13	-260	-290	-390	-280
	14	-280	-240	-370	-310
	15	-240	-210	-300	-310

AB.24 Free to be placed in Clearing: Daily net change (from all domiciles)
Net increase since previous weekday (2018 cycle up to A level results day)

- 2014
- 2015
- 2016
- 2017
- 2018



AB.25 Free to be placed in Clearing: Daily net change (from all domiciles)

Net increase since previous weekday (2018 cycle up to A level results day)

Applicant status, days since A level results day		2014	2015	2016	2017	2018
Free to be placed in Clearing	0	0	0	0	0	0
	1	150	240	110	190	
	4	-660	-620	-550	-390	
	5	-220	-150	-180	-110	
	6	-110	-200	-160	-70	
	7	-100	-130	-130	-110	
	8	-60	-70	20	20	
	12	-200	-140	-20	-30	
	13	-80	-100	-40	-70	
	14	-90	-10	-30	20	
	15	-60	-20	-60	0	