

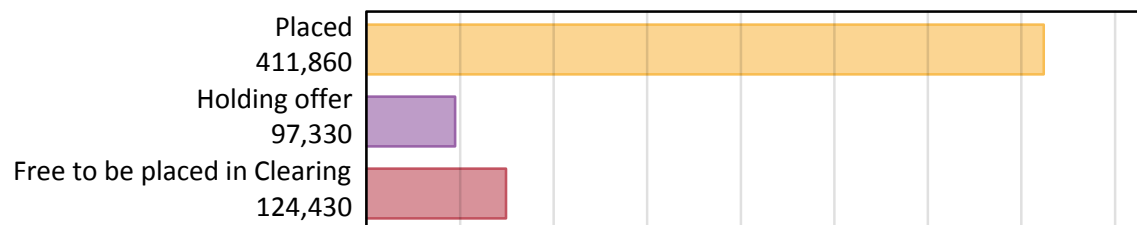
# Daily Clearing Analysis: Overview

Analysis at 00:05 on Thursday 16 August 2018 (A level results day)

## A.1 Applicants by type and status from all domiciles, 2018 cycle

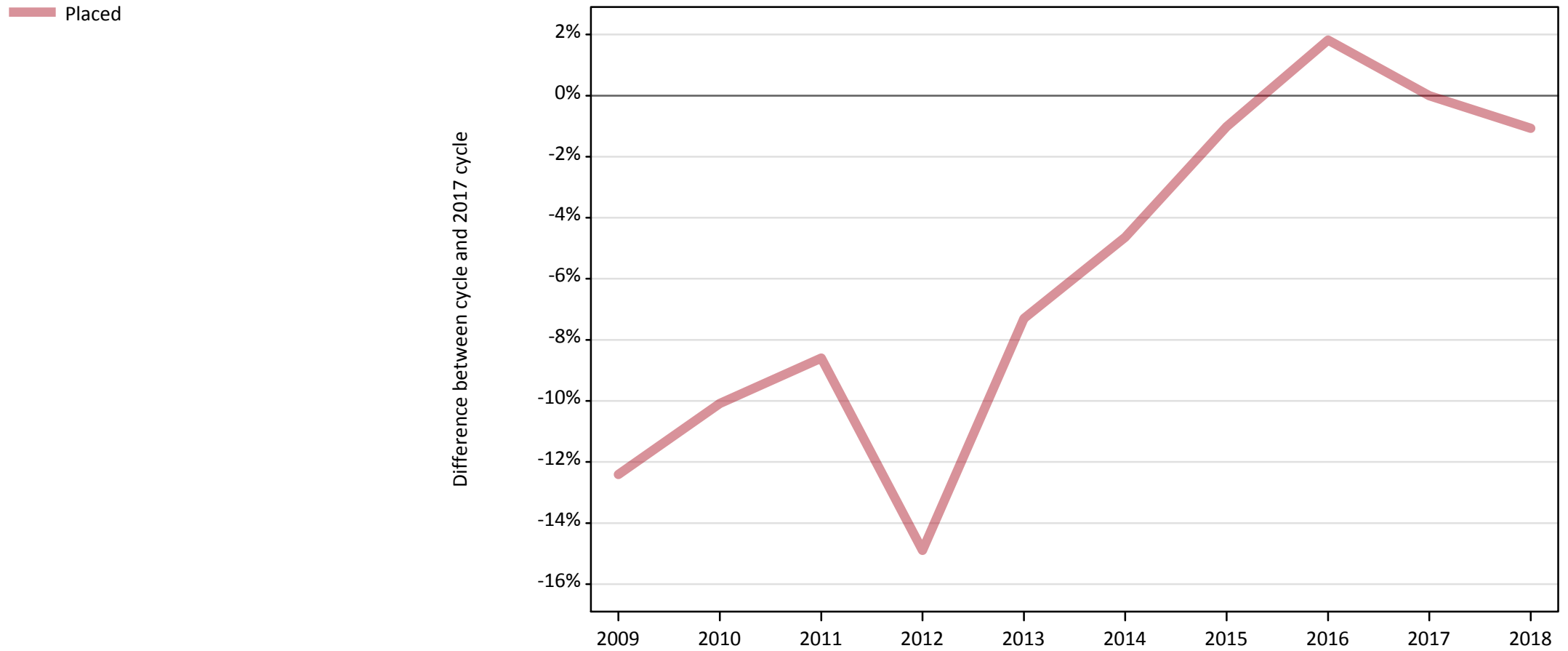
Applicant type	Status	2018
Main scheme	Placed (Clearing)	4,260
	Placed (Adjustment)	0
	Placed (Firm)	363,080
	Placed (Insurance)	28,550
	Placed (Other)	12,510
	Holding offer	97,330
	Free to be placed in Clearing	124,430
Direct to Clearing	Placed (Direct to Clearing)	3,470
	Other (Direct to Clearing)	7,970
All applicants	Placed	411,860

## A.2 Summary of applicants who are placed, holding offers or free to be placed in Clearing ( all domiciles )



### A.3 All placed applicants from all domiciles: A level results day

All placed applicants: difference between cycle and 2017 cycle



Note: The percentage change is not plotted in the above chart for groups with fewer than 30 placed applicants in any one cycle.

#### A.4 All placed applicants from all domiciles: A level results day

All placed applicants: applicants at A level results day

Applicant type	Status	2009	2010	2011	2012	2013	2014	2015	2016	2017	2018
All applicants	Placed	364,640	374,330	380,520	354,310	385,910	396,990	412,080	423,880	416,310	411,860

#### A.5 All placed applicants from all domiciles: A level results day

All placed applicants: difference between cycle and 2017 cycle

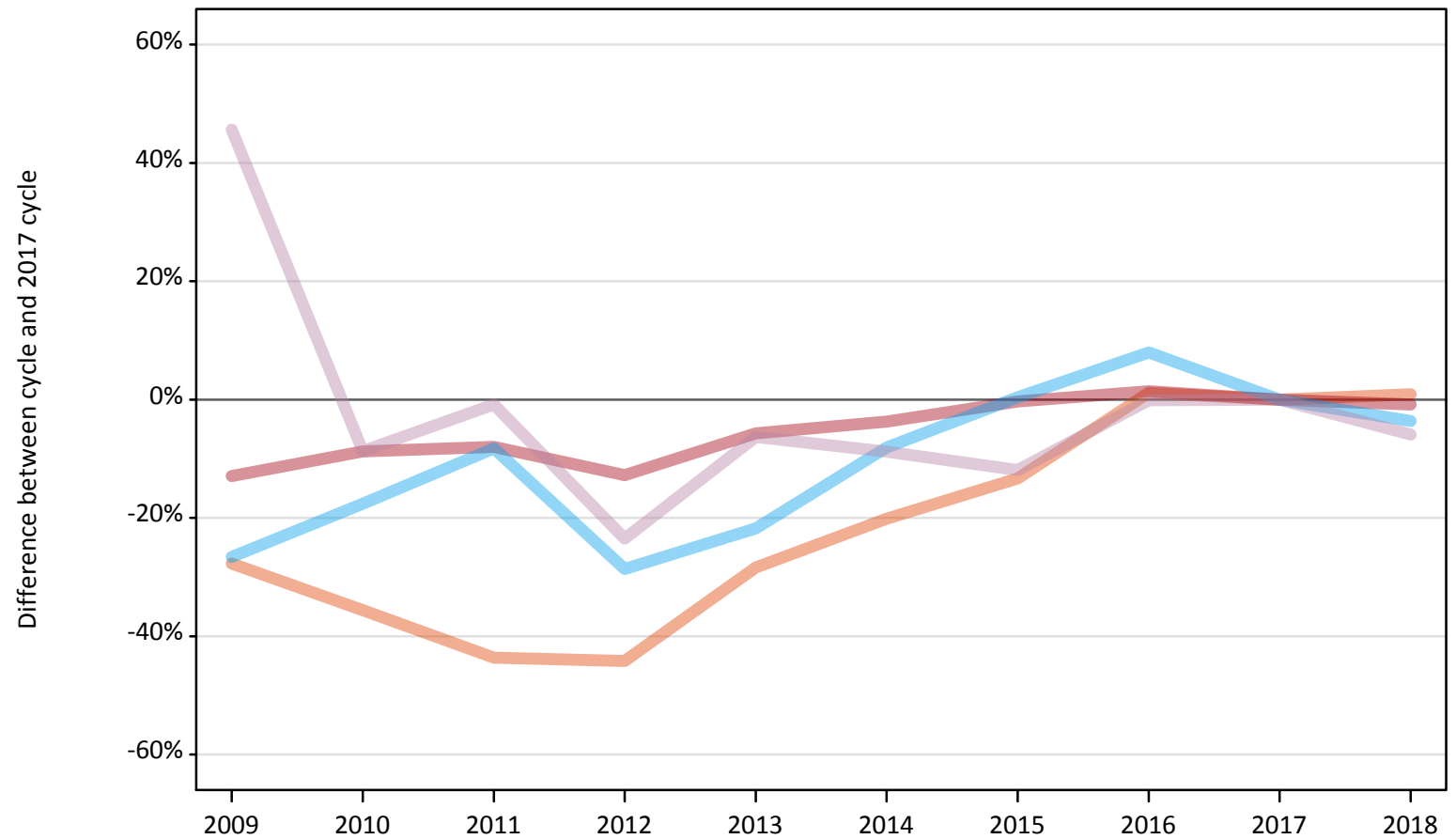
Applicant type	Status	2009	2010	2011	2012	2013	2014	2015	2016	2017	2018
All applicants	Placed	-12%	-10%	-9%	-15%	-7%	-5%	-1%	2%	0%	-1%

Note: The percentage change is not recorded in the above table for groups with fewer than 10 placed applicants in that cycle or in the 2017 cycle.

## A.6 Placed main scheme applicants from all domiciles: A level results day

All Main scheme placed routes (excluding Adjustment): difference between cycle and 2017 cycle

- Placed (Clearing)
- Placed (Firm)
- Placed (Insurance)
- Placed (Other)



Note: The percentage change is not plotted in the above chart for groups with fewer than 30 placed applicants in any one cycle.

### A.7 Placed main scheme applicants from all domiciles: A level results day

All Main scheme placed routes (excluding Adjustment): applicants at A level results day

Applicant type	Status	2009	2010	2011	2012	2013	2014	2015	2016	2017	2018
Main scheme	Placed (Clearing)	3,050	2,720	2,380	2,350	3,020	3,370	3,660	4,270	4,220	4,260
	Placed (Firm)	318,940	334,120	336,870	319,460	345,300	352,590	364,990	371,430	366,220	363,080
	Placed (Insurance)	21,740	24,400	27,190	21,140	23,180	27,230	29,740	31,990	29,630	28,550
	Placed (Other)	19,350	12,130	13,180	10,170	12,450	12,120	11,700	13,280	13,290	12,510

### A.8 Placed main scheme applicants from all domiciles: A level results day

All Main scheme placed routes (excluding Adjustment): difference between cycle and 2017 cycle

Applicant type	Status	2009	2010	2011	2012	2013	2014	2015	2016	2017	2018
Main scheme	Placed (Clearing)	-28%	-36%	-44%	-44%	-28%	-20%	-13%	1%	0%	1%
	Placed (Firm)	-13%	-9%	-8%	-13%	-6%	-4%	-0%	1%	0%	-1%
	Placed (Insurance)	-27%	-18%	-8%	-29%	-22%	-8%	0%	8%	0%	-4%
	Placed (Other)	46%	-9%	-1%	-24%	-6%	-9%	-12%	-0%	0%	-6%

Note: The percentage change is not recorded in the above table for groups with fewer than 10 placed applicants in that cycle or in the 2017 cycle.

**A.9 Main scheme applicants placed through adjustment: A level results day**

Placed through adjustment: difference between cycle and 2017 cycle

**[Analysis on placed by adjustment available from 18 August 2018]**

**A.10 Main scheme applicants placed through adjustment: A level results day**

Placed through adjustment: applicants at A level results day

**[Analysis on placed by adjustment available from 18 August 2018]**

**A.11 Main scheme applicants placed through adjustment: A level results day**

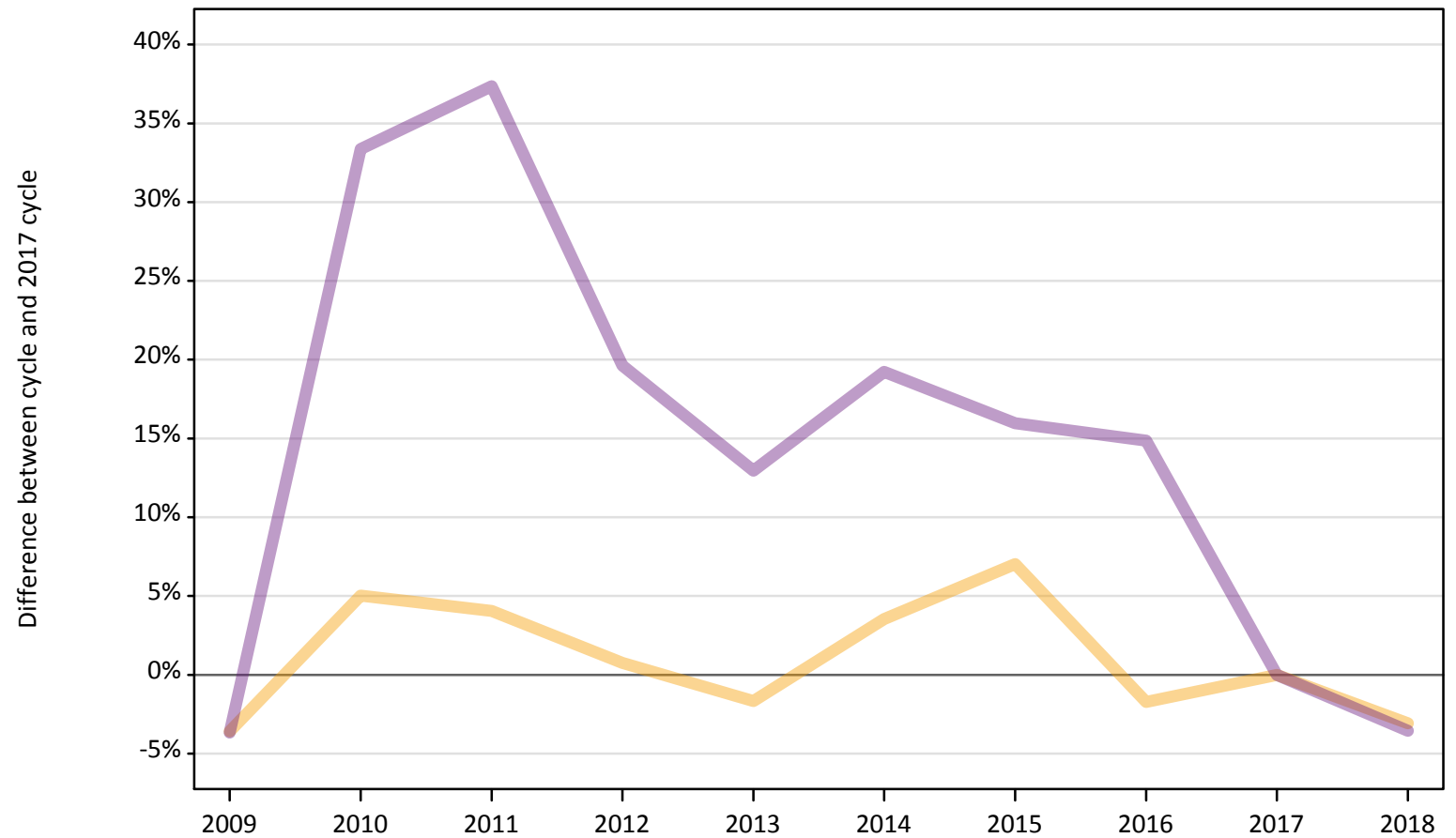
Placed through adjustment: difference between cycle and 2017 cycle

**[Analysis on placed by adjustment available from 18 August 2018]**

### A.12 Main scheme applicants not currently placed from all domiciles: A level results day

Applicants in unplaced states: difference between cycle and 2017 cycle

- Holding offer
- Free to be placed in Clearing



Note: The percentage change is not plotted in the above chart for groups with fewer than 30 unplaced applicants in any one cycle.

### A.13 Main scheme applicants not currently placed from all domiciles: A level results day

Applicants in unplaced states: applicants at A level results day

Applicant type	Status	2009	2010	2011	2012	2013	2014	2015	2016	2017	2018
Main scheme	Holding offer	96,800	105,470	104,490	101,160	98,740	103,970	107,470	98,690	100,410	97,330
	Free to be placed in Clearing	124,280	172,070	177,200	154,350	145,730	153,830	149,630	148,180	129,020	124,430

### A.14 Main scheme applicants not currently placed from all domiciles: A level results day

Applicants in unplaced states: difference between cycle and 2017 cycle

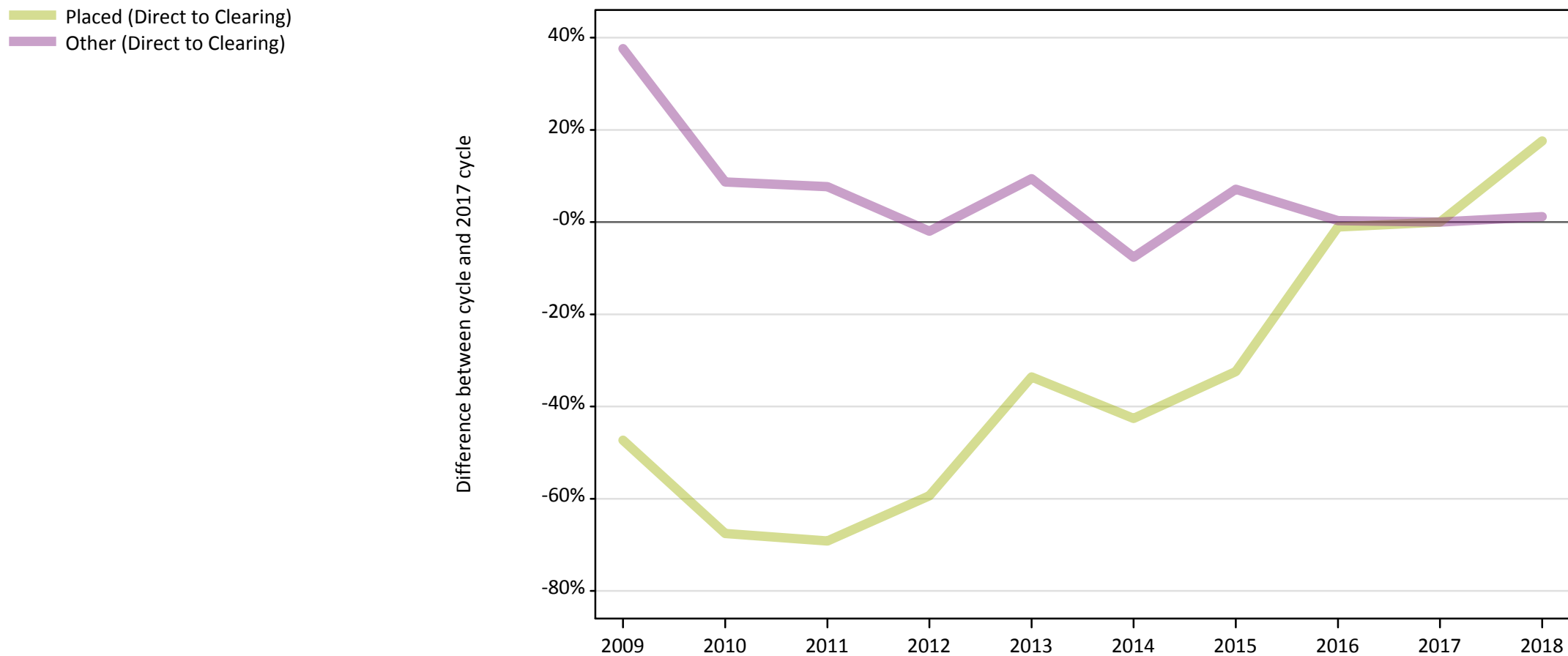
Applicant type	Status	2009	2010	2011	2012	2013	2014	2015	2016	2017	2018
Main scheme	Holding offer	-4%	5%	4%	1%	-2%	4%	7%	-2%	0%	-3%
	Free to be placed in Clearing	-4%	33%	37%	20%	13%	19%	16%	15%	0%	-4%

Note: The percentage change is not recorded in the above table for groups with fewer than 10 unplaced applicants in that cycle or in the 2017 cycle.



### A.15 Direct to Clearing applicants from all domiciles: A level results day

Direct to Clearing: difference between cycle and 2017 cycle



Note: The percentage change is not plotted in the above chart for groups with fewer than 30 placed applicants in any one cycle.

### A.16 Direct to Clearing applicants from all domiciles: A level results day

Direct to Clearing A level results day

Applicant type	Status	2009	2010	2011	2012	2013	2014	2015	2016	2017	2018
Direct to Clearing	Placed (Direct to Clearing)	1,550	960	910	1,200	1,960	1,690	1,990	2,920	2,950	3,470
	Other (Direct to Clearing)	10,840	8,560	8,490	7,720	8,620	7,280	8,440	7,900	7,880	7,970

### A.17 Direct to Clearing applicants from all domiciles: A level results day

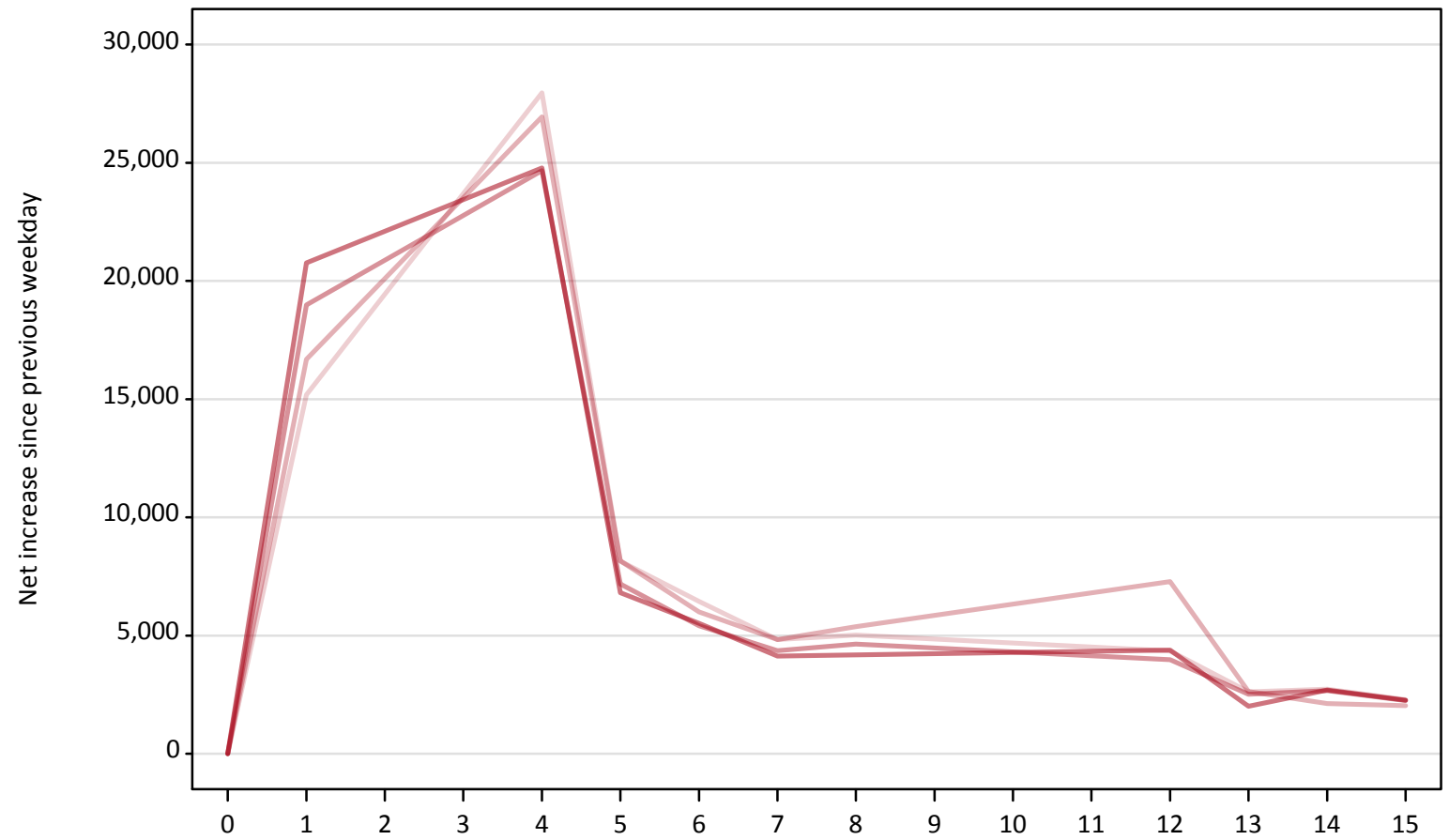
Direct to Clearing: difference between cycle and 2017 cycle

Applicant type	Status	2009	2010	2011	2012	2013	2014	2015	2016	2017	2018
Direct to Clearing	Placed (Direct to Clearing)	-47%	-68%	-69%	-59%	-34%	-43%	-32%	-1%	0%	18%
	Other (Direct to Clearing)	38%	9%	8%	-2%	9%	-8%	7%	0%	0%	1%

Note: The percentage change is not recorded in the above table for groups with fewer than 10 placed applicants in that cycle or in the 2017 cycle.

**A.18 All Placed: Daily net change (from all domiciles)**  
Net increase since previous weekday (2018 cycle up to A level results day)

- 2014
- 2015
- 2016
- 2017
- 2018

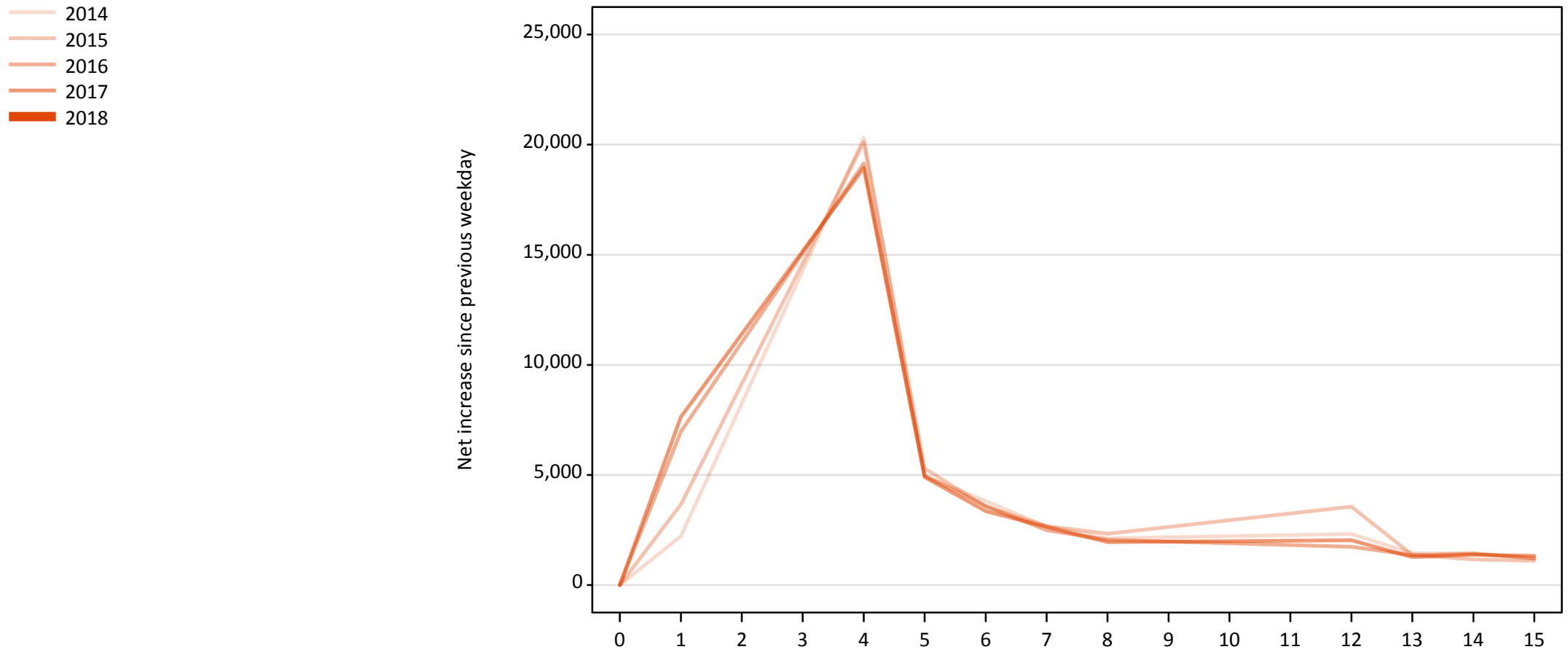


**A.19 All Placed: Daily net change (from all domiciles)**

Net increase since previous weekday (2018 cycle up to A level results day)

Applicant status, days since A level results day		2014	2015	2016	2017	2018
All Placed	0	0	0	0	0	0
	1	15,180	16,680	18,990	20,770	
	4	27,960	26,940	24,670	24,790	
	5	8,140	8,160	7,170	6,810	
	6	6,450	6,000	5,410	5,510	
	7	4,830	4,830	4,350	4,140	
	8	5,020	5,370	4,640	4,190	
	12	4,340	7,280	3,980	4,380	
	13	2,620	2,630	2,510	2,010	
	14	2,730	2,120	2,660	2,700	
	15	2,280	2,030	2,250	2,260	

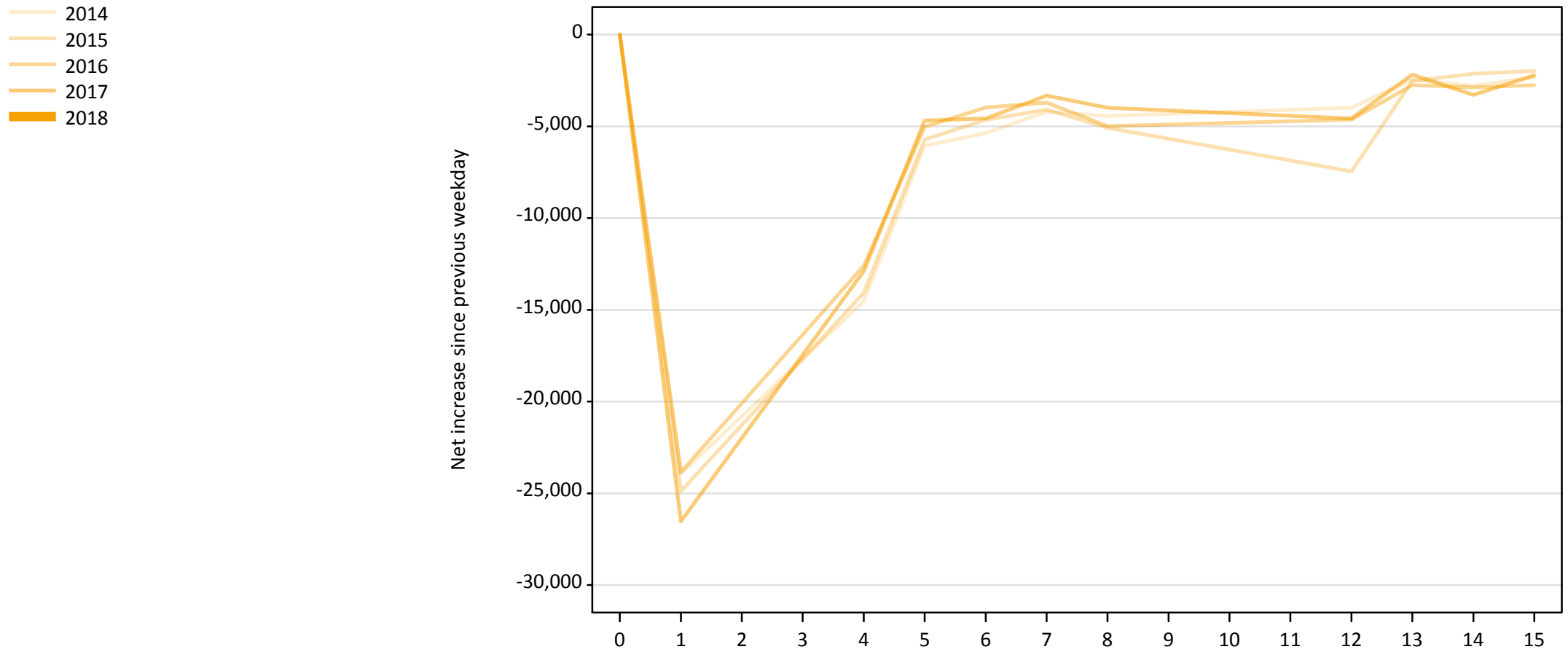
**A.20 Placed through Clearing only: Daily net change (from all domiciles)**  
Net increase since previous weekday (2018 cycle up to A level results day)



**A.21 Placed through Clearing only: Daily net change (from all domiciles)**  
 Net increase since previous weekday (2018 cycle up to A level results day)

Applicant status, days since A level results day		2014	2015	2016	2017	2018
Placed through Clearing only	0	0	0	0	0	0
	1	2,220	3,660	6,970	7,640	
	4	20,340	20,110	19,140	18,940	
	5	4,950	5,290	4,960	4,910	
	6	3,810	3,560	3,590	3,360	
	7	2,650	2,680	2,480	2,640	
	8	2,120	2,330	2,050	1,950	
	12	2,310	3,550	1,740	2,030	
	13	1,450	1,370	1,350	1,270	
	14	1,450	1,160	1,420	1,370	
	15	1,190	1,100	1,210	1,320	

**A.22 Holding Offer: Daily net change (from all domiciles)**  
Net increase since previous weekday (2018 cycle up to A level results day)



### A.23 Holding Offer: Daily net change (from all domiciles)

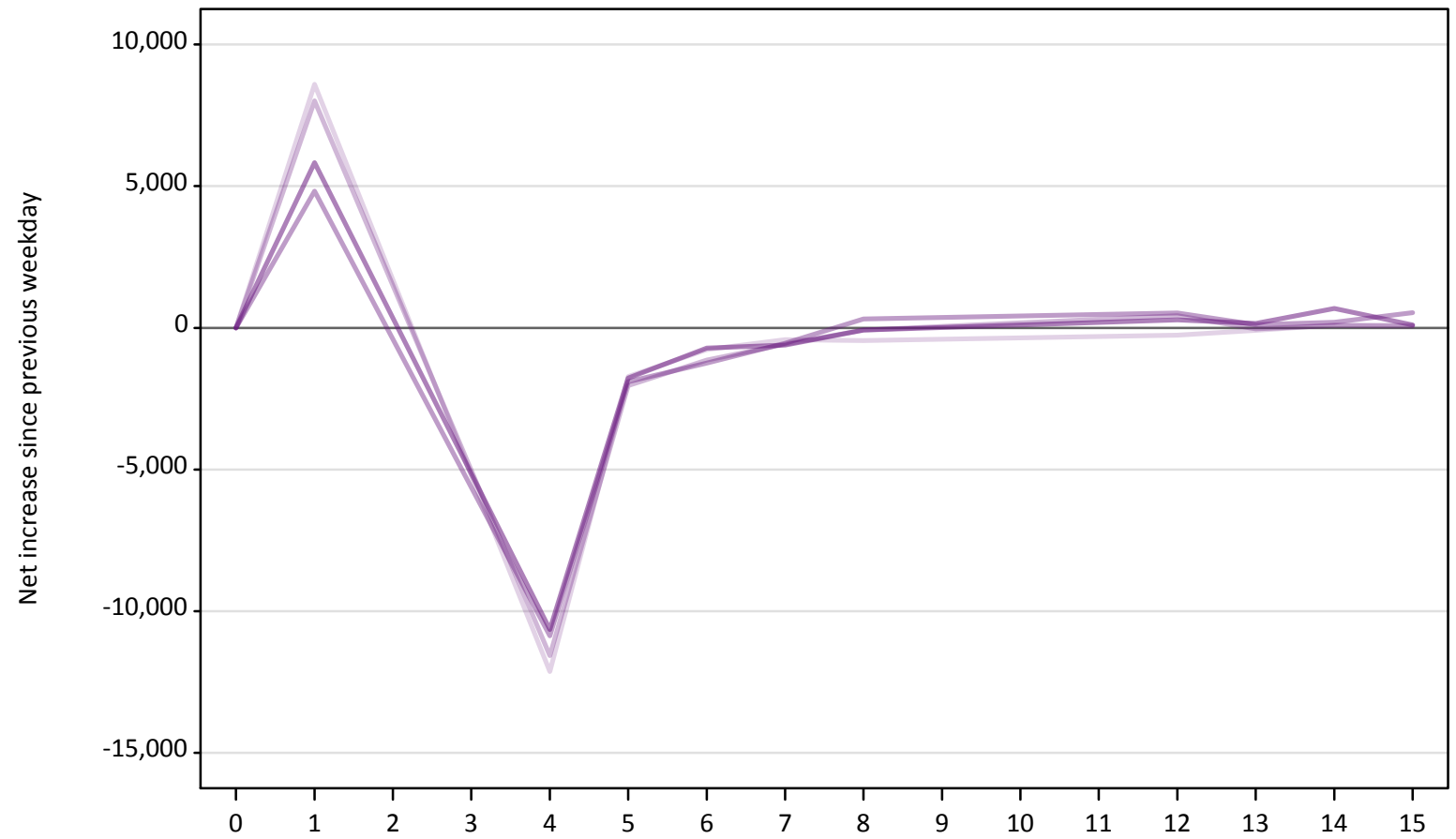
Net increase since previous weekday (2018 cycle up to A level results day)

Applicant status, days since A level results day		2014	2015	2016	2017	2018
Holding Offer	0	0	0	0	0	0
	1	-23,940	-24,880	-23,840	-26,530	
	4	-14,530	-14,080	-12,600	-12,900	
	5	-6,060	-5,720	-5,030	-4,680	
	6	-5,380	-4,650	-3,970	-4,580	
	7	-4,210	-4,090	-3,700	-3,330	
	8	-4,430	-5,080	-4,990	-3,990	
	12	-3,980	-7,460	-4,640	-4,580	
	13	-2,450	-2,520	-2,760	-2,180	
	14	-2,790	-2,130	-2,880	-3,280	
	15	-2,330	-1,980	-2,760	-2,230	



**A.24 Free to be placed in Clearing: Daily net change (from all domiciles)**  
Net increase since previous weekday (2018 cycle up to A level results day)

- 2014
- 2015
- 2016
- 2017
- 2018



**A.25 Free to be placed in Clearing: Daily net change (from all domiciles)**  
 Net increase since previous weekday (2018 cycle up to A level results day)

Applicant status, days since A level results day		2014	2015	2016	2017	2018
Free to be placed in Clearing	0	0	0	0	0	0
	1	8,600	8,010	4,820	5,830	
	4	-12,130	-11,570	-10,870	-10,650	
	5	-1,720	-2,040	-1,900	-1,780	
	6	-770	-1,130	-1,250	-710	
	7	-420	-570	-540	-610	
	8	-450	-80	310	-80	
	12	-260	430	530	280	
	13	-90	-40	120	150	
	14	100	80	200	680	
	15	90	60	530	100	