

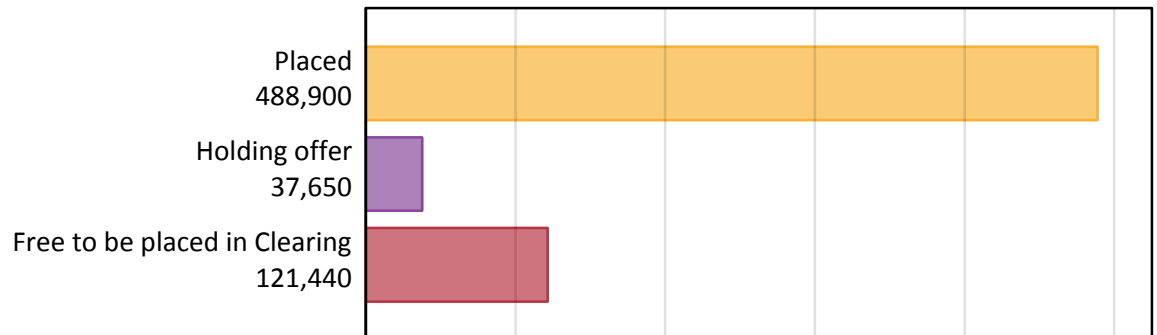
Daily Clearing Analysis: Overview

Analysis at 00:05 on Wednesday 30 August 2017 (13 days after A level results day)

A.1 Applicants by type and status from all domiciles, 2017 cycle

Applicant type	Status	2017
Main scheme	Placed (Clearing)	40,620
	Placed (Adjustment)	1,060
	Placed (Firm)	387,250
	Placed (Insurance)	35,980
	Placed (Other)	14,710
	Holding offer	37,650
	Free to be placed in Clearing	121,440
Direct to Clearing	Placed (Direct to Clearing)	9,280
	Other (Direct to Clearing)	8,100
All applicants	Placed	488,900

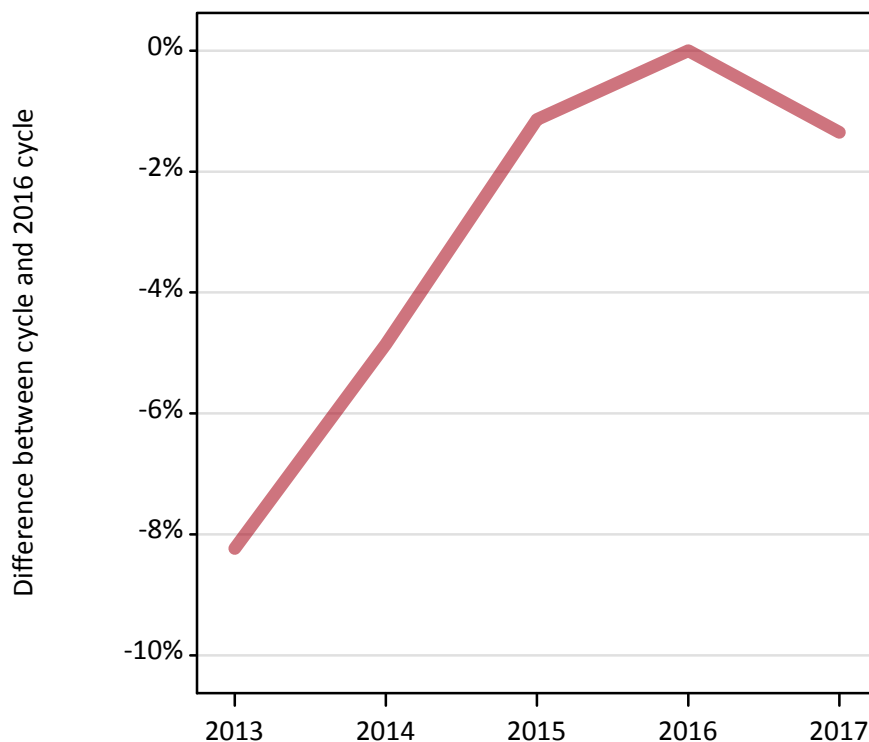
A.2 Summary of applicants who are placed, holding offers or free to be placed in Clearing (all domiciles)



A.3 All placed applicants from all domiciles: 13 days after A level results day

All placed applicants: difference between cycle and 2016 cycle

Placed



A.4 All placed applicants from all domiciles: 13 days after A level results day

All placed applicants: applicants at 13 days after A level results day

Applicant type	Status	2013	2014	2015	2016	2017
All applicants	Placed	454,790	471,530	489,960	495,610	488,900

A.5 All placed applicants from all domiciles: 13 days after A level results day

All placed applicants: difference between cycle and 2016 cycle

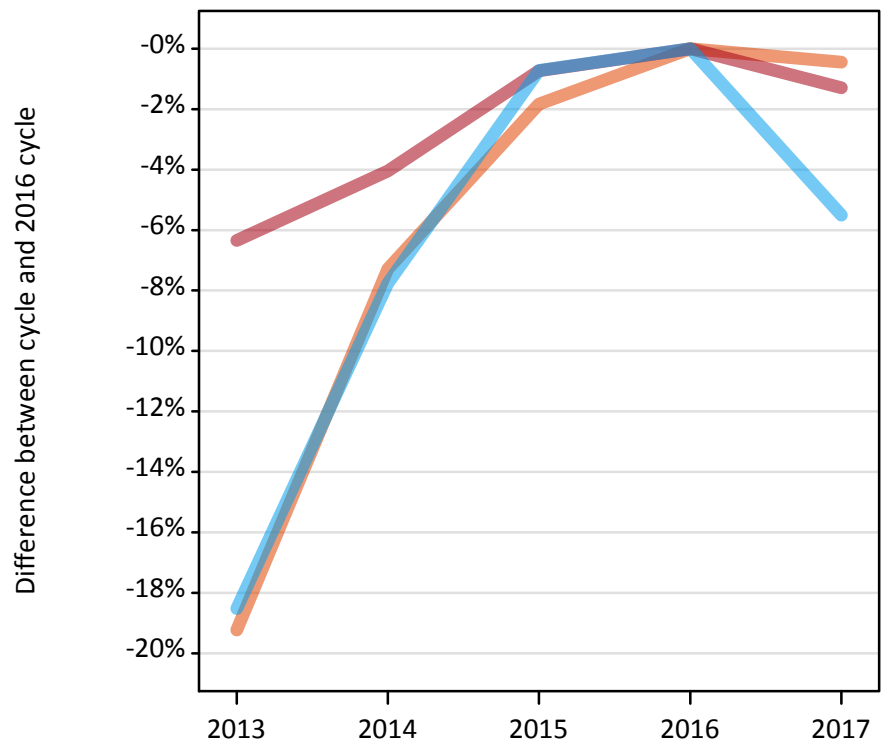
Applicant type	Status	2013	2014	2015	2016	2017
All applicants	Placed	-8%	-5%	-1%	0%	-1%

Note: Percentage changes are not plotted for lines with, on average, fewer than 30 applicants per year. As a result, lines for some, or all, of the states may be missing.

A.6 Placed main scheme applicants from all domiciles: 13 days after A level results day

Selected placed routes: difference between cycle and 2016 cycle

- Placed (Clearing)
- Placed (Firm)
- Placed (Insurance)



A.7 Placed main scheme applicants from all domiciles: 13 days after A level results day

All Main scheme placed routes (excluding Adjustment): applicants at 13 days after A level results day

Applicant type	Status	2013	2014	2015	2016	2017
Main scheme	Placed (Clearing)	32,960	37,830	40,060	40,800	40,620
	Placed (Firm)	367,420	376,410	389,410	392,300	387,250
	Placed (Insurance)	31,030	35,120	37,800	38,080	35,980
	Placed (Other)	14,230	13,910	13,380	14,840	14,710

A.8 Placed main scheme applicants from all domiciles: 13 days after A level results day

Selected placed routes: difference between cycle and 2016 cycle

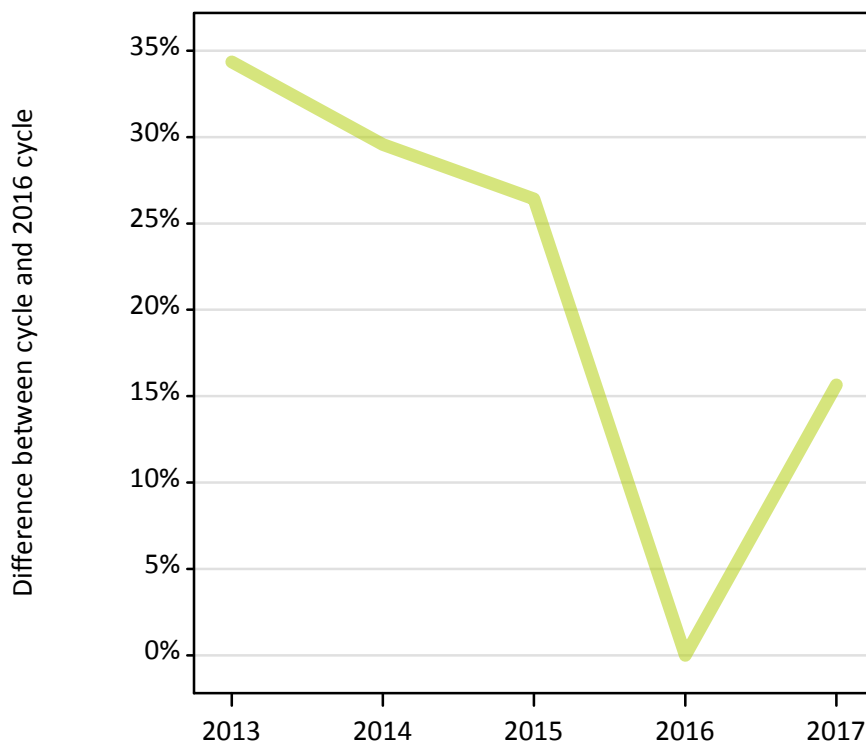
Applicant type	Status	2013	2014	2015	2016	2017
Main scheme	Placed (Clearing)	-19%	-7%	-2%	0%	-0%
	Placed (Firm)	-6%	-4%	-1%	0%	-1%
	Placed (Insurance)	-19%	-8%	-1%	0%	-6%

Note: Percentage changes are not plotted for lines with, on average, fewer than 30 applicants per year. As a result, lines for some, or all, of the states may be missing.

A.9 Main scheme applicants placed through adjustment: 13 days after A level results day

Placed through adjustment: difference between cycle and 2016 cycle

Placed (Adjustment)



A.10 Main scheme applicants placed through adjustment: 13 days after A level results day

Placed through adjustment: applicants at 13 days after A level results day

Applicant type	Status	2013	2014	2015	2016	2017
Main scheme	Placed (Adjustment)	1,240	1,190	1,160	920	1,060

A.11 Main scheme applicants placed through adjustment: 13 days after A level results day

Placed through adjustment: difference between cycle and 2016 cycle

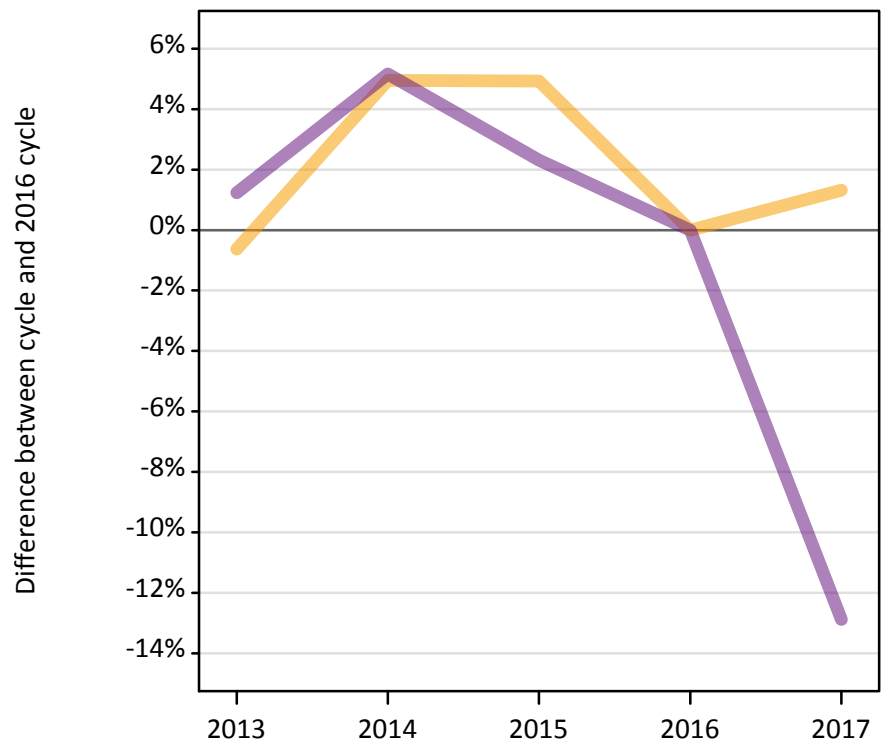
Applicant type	Status	2013	2014	2015	2016	2017
Main scheme	Placed (Adjustment)	34%	30%	26%	0%	16%

Note: Percentage changes are not plotted for lines with, on average, fewer than 30 applicants per year. As a result, lines for some, or all, of the states may be missing.

A.12 Main scheme applicants not currently placed from all domiciles: 13 days after A level results day

Applicants in unplaced states: difference between cycle and 2016 cycle

— Holding offer
— Free to be placed in Clearing



A.13 Main scheme applicants not currently placed from all domiciles: 13 days after A level results day

Applicants in unplaced states: applicants at 13 days after A level results day

Applicant type	Status	2013	2014	2015	2016	2017
Main scheme	Holding offer	36,920	39,000	38,990	37,160	37,650
	Free to be placed in Clearing	141,110	146,590	142,620	139,400	121,440

A.14 Main scheme applicants not currently placed from all domiciles: 13 days after A level results day

Applicants in unplaced states: difference between cycle and 2016 cycle

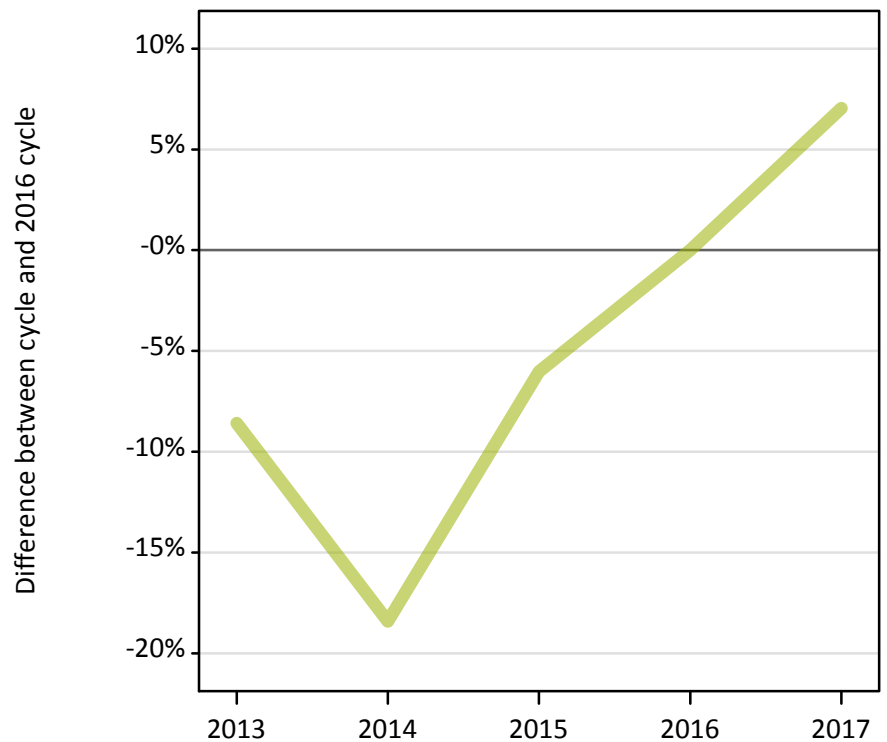
Applicant type	Status	2013	2014	2015	2016	2017
Main scheme	Holding offer	-1%	5%	5%	0%	1%
	Free to be placed in Clearing	1%	5%	2%	0%	-13%

Note: Percentage changes are not plotted for lines with, on average, fewer than 30 applicants per year. As a result, lines for some, or all, of the states may be missing.

A.15 Direct to Clearing applicants from all domiciles: 13 days after A level results day

Placed (Direct to Clearing): difference between cycle and 2016 cycle

Placed (Direct to Clearing)



A.16 Direct to Clearing applicants from all domiciles: 13 days after A level results day

Direct to Clearing 13 days after A level results day

Applicant type	Status	2013	2014	2015	2016	2017
Direct to Clearing	Placed (Direct to Clearing)	7,920	7,070	8,150	8,670	9,280
	Other (Direct to Clearing)	8,180	7,370	8,140	7,790	8,100

A.17 Direct to Clearing applicants from all domiciles: 13 days after A level results day

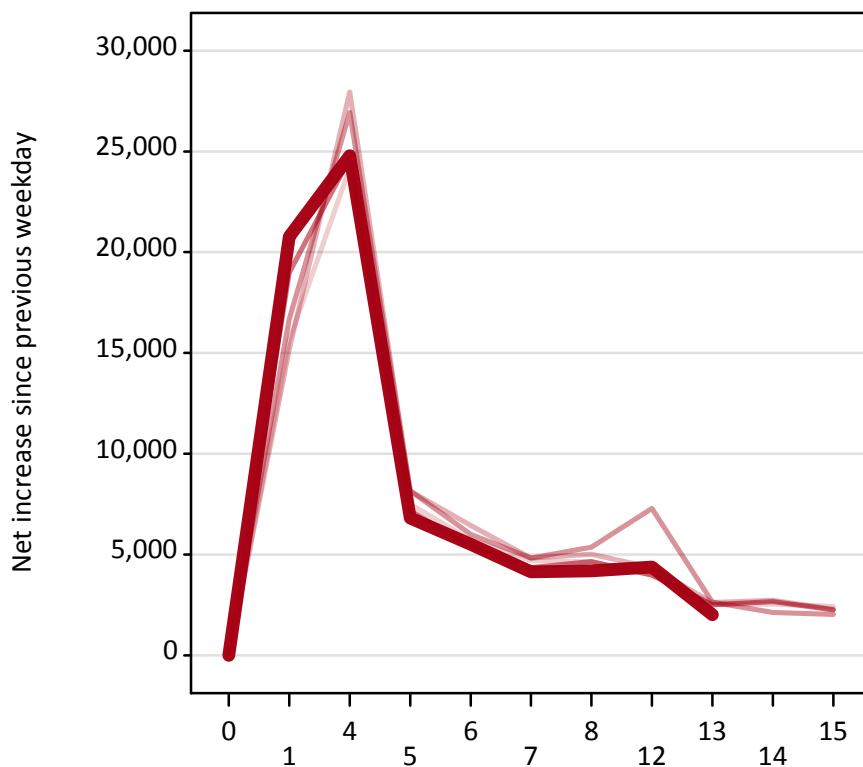
Placed (Direct to Clearing): difference between cycle and 2016 cycle

Applicant type	Status	2013	2014	2015	2016	2017
Direct to Clearing	Placed (Direct to Clearing)	-9%	-18%	-6%	0%	7%

Note: Percentage changes are not plotted for lines with, on average, fewer than 30 applicants per year. As a result, lines for some, or all, of the states may be missing.

A.18 All Placed: Daily net change (from all domiciles)

Net increase since previous weekday (2017 cycle up to 13 days after A level results day)



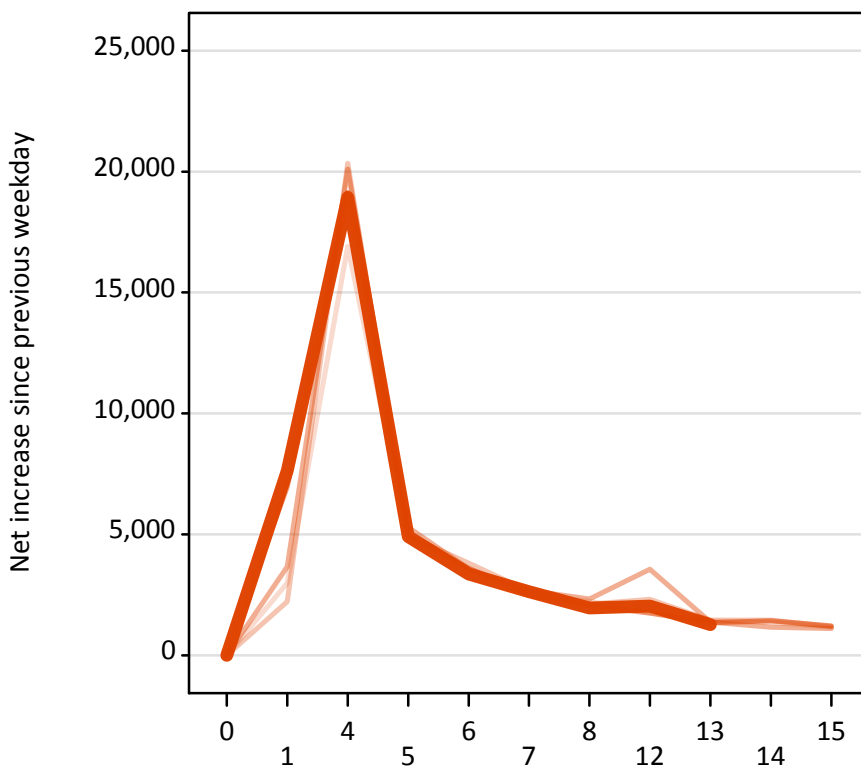
A.19 All Placed: Daily net change (from all domiciles)

Net increase since previous weekday (2017 cycle up to 13 days after A level results day)

Applicant status, days since A level results day		2013	2014	2015	2016	2017
All Placed	0	0	0	0	0	0
	1	15,640	15,180	16,680	18,990	20,770
	4	24,180	27,960	26,940	24,670	24,790
	5	7,490	8,140	8,160	7,170	6,810
	6	5,720	6,450	6,000	5,410	5,510
	7	4,690	4,830	4,830	4,350	4,140
	8	4,640	5,020	5,370	4,640	4,190
	12	3,980	4,340	7,280	3,980	4,380
	13	2,540	2,620	2,630	2,510	2,010
	14	2,540	2,730	2,120	2,660	
	15	2,420	2,280	2,030	2,250	

A.20 Placed through Clearing only: Daily net change (from all domiciles)

Net increase since previous weekday (2017 cycle up to 13 days after A level results day)



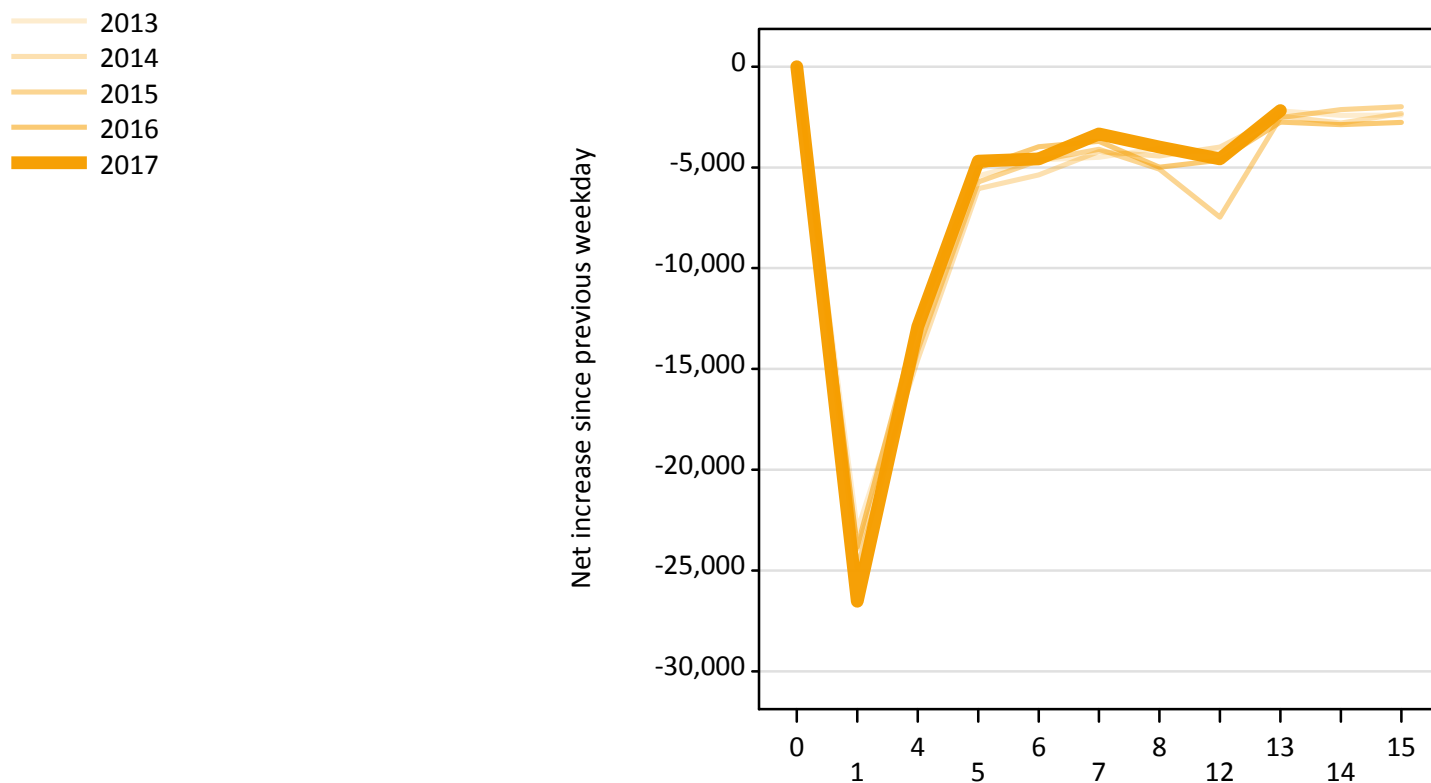
A.21 Placed through Clearing only: Daily net change (from all domiciles)

Net increase since previous weekday (2017 cycle up to 13 days after A level results day)

Applicant status, days since A level results day		2013	2014	2015	2016	2017
Placed through Clearing only	0	0	0	0	0	0
	1	2,990	2,220	3,660	6,970	7,640
	4	16,910	20,340	20,110	19,140	18,940
	5	4,810	4,950	5,290	4,960	4,910
	6	3,320	3,810	3,560	3,590	3,360
	7	2,470	2,650	2,680	2,480	2,640
	8	2,240	2,120	2,330	2,050	1,950
	12	1,760	2,310	3,550	1,740	2,030
	13	1,410	1,450	1,370	1,350	1,270
	14	1,350	1,450	1,160	1,420	
	15	1,170	1,190	1,100	1,210	

A.22 Holding Offer: Daily net change (from all domiciles)

Net increase since previous weekday (2017 cycle up to 13 days after A level results day)



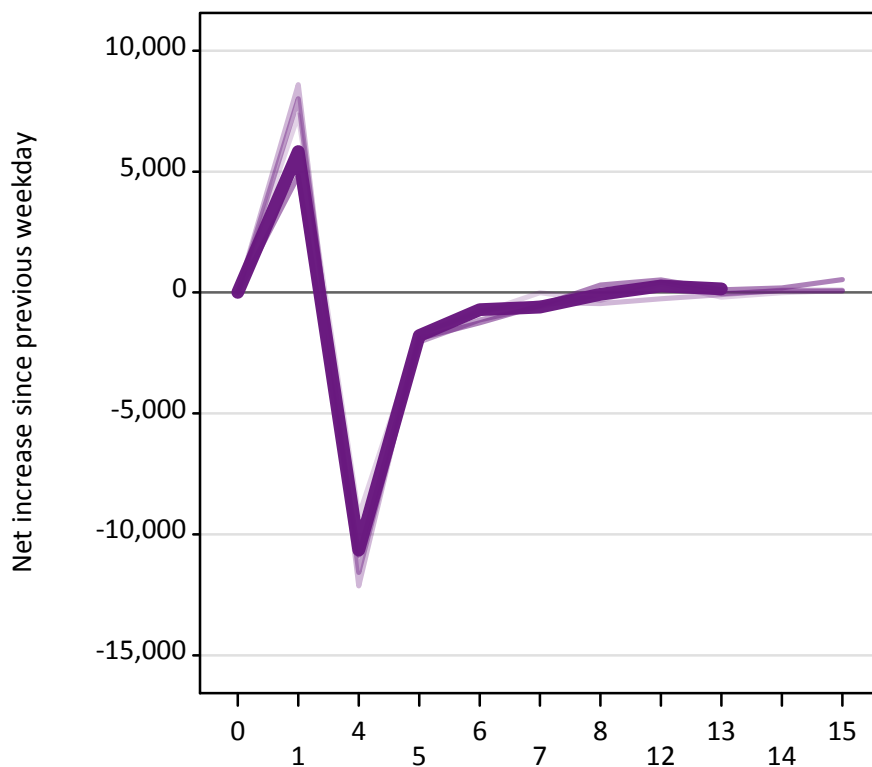
A.23 Holding Offer: Daily net change (from all domiciles)

Net increase since previous weekday (2017 cycle up to 13 days after A level results day)

Applicant status, days since A level results day		2013	2014	2015	2016	2017
Holding Offer	0	0	0	0	0	0
	1	-23,020	-23,940	-24,880	-23,840	-26,530
	4	-13,720	-14,530	-14,080	-12,600	-12,900
	5	-5,420	-6,060	-5,720	-5,030	-4,680
	6	-4,630	-5,380	-4,650	-3,970	-4,580
	7	-4,500	-4,210	-4,090	-3,700	-3,330
	8	-4,050	-4,430	-5,080	-4,990	-3,990
	12	-4,290	-3,980	-7,460	-4,640	-4,580
	13	-2,190	-2,450	-2,520	-2,760	-2,180
	14	-2,410	-2,790	-2,130	-2,880	
	15	-2,400	-2,330	-1,980	-2,760	

A.24 Free to be placed in Clearing: Daily net change (from all domiciles)

Net increase since previous weekday (2017 cycle up to 13 days after A level results day)



A.25 Free to be placed in Clearing: Daily net change (from all domiciles)

Net increase since previous weekday (2017 cycle up to 13 days after A level results day)

Applicant status, days since A level results day		2013	2014	2015	2016	2017
Free to be placed in Clearing	0	0	0	0	0	0
	1	7,340	8,600	8,010	4,820	5,830
	4	-9,230	-12,130	-11,570	-10,870	-10,650
	5	-1,690	-1,720	-2,040	-1,900	-1,780
	6	-860	-770	-1,130	-1,250	-710
	7	0	-420	-570	-540	-610
	8	-330	-450	-80	310	-80
	12	360	-260	430	530	280
	13	-200	-90	-40	120	150
	14	-10	100	80	200	
	15	90	90	60	530	