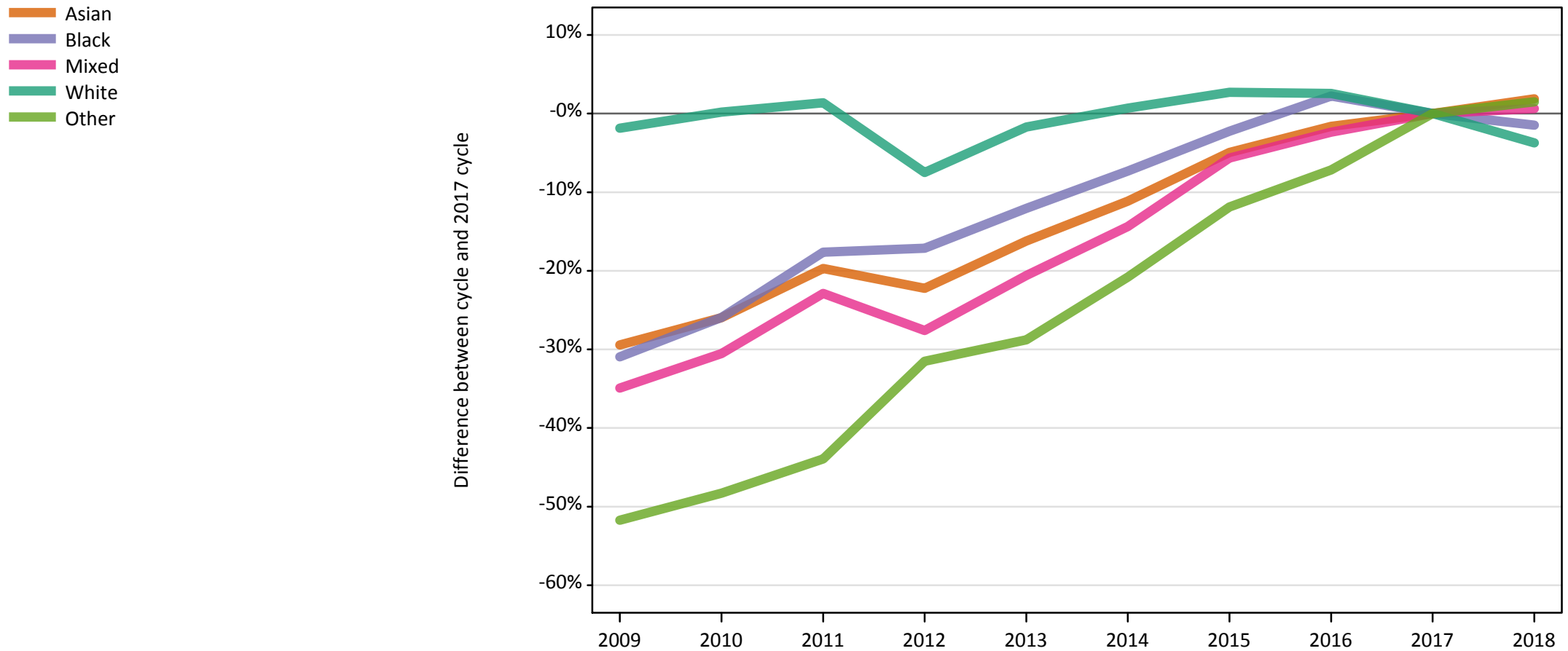


Daily Clearing Analysis: Ethnicity

Analysis at 00:05 on Wednesday 29 August 2018 (13 days after A level results day)

E.1 Placed applicants from UK by ethnic group: 13 days after A level results day

Placed applicants: change relative to 2017 cycle totals



Note: The percentage change is not plotted in the above chart for groups with fewer than 30 placed applicants in any one cycle.

E.2 Placed applicants from UK by ethnic group: 13 days after A level results day

Applicant Status	Ethnic group	2009	2010	2011	2012	2013	2014	2015	2016	2017	2018
Placed	Asian	35,240	36,980	40,100	38,840	41,840	44,370	47,480	49,130	49,940	50,880
	Black	20,860	22,380	24,880	25,030	26,570	28,000	29,530	30,890	30,210	29,760
	Mixed	12,230	13,050	14,490	13,600	14,920	16,090	17,730	18,340	18,790	18,910
	White	309,370	315,830	319,570	291,610	309,840	317,430	323,760	323,290	315,200	303,490
	Other	3,500	3,750	4,070	4,970	5,170	5,750	6,400	6,740	7,260	7,370

E.3 Placed applicants from UK by ethnic group: 13 days after A level results day

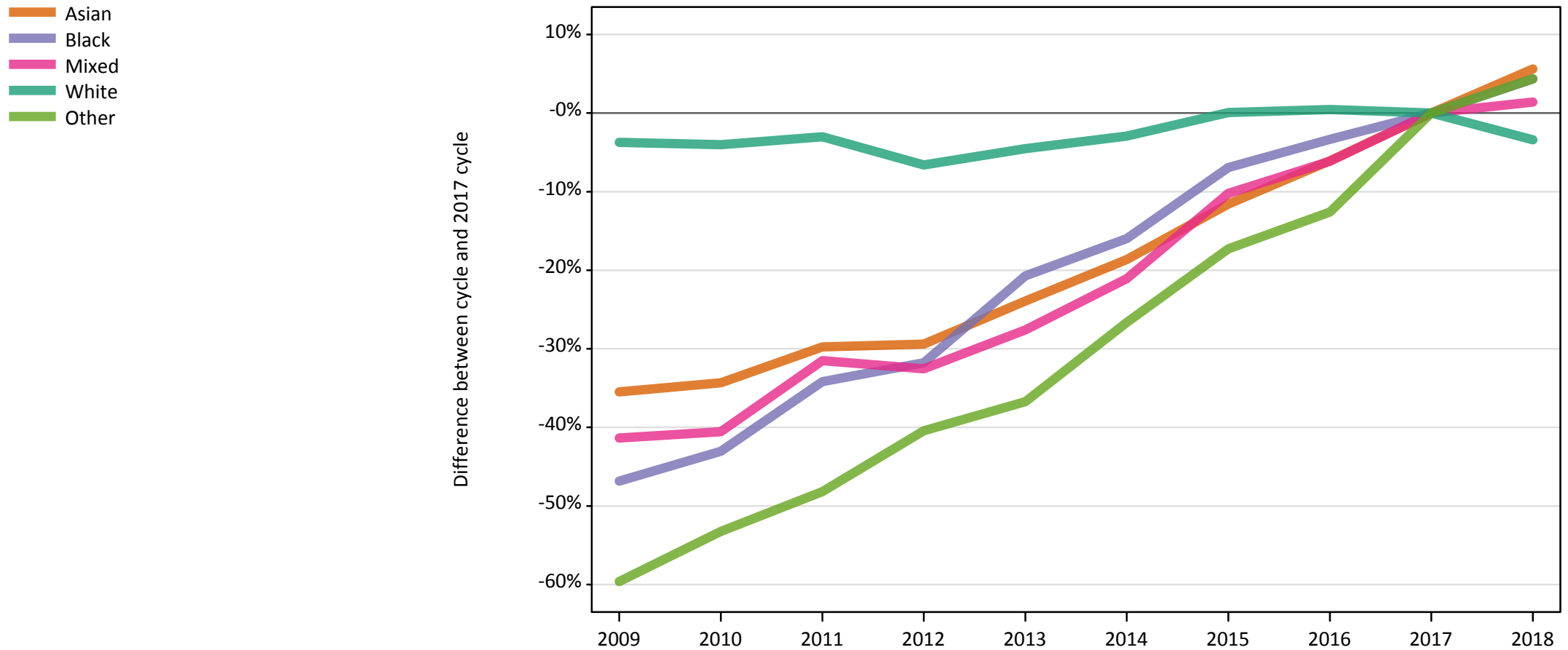
Placed applicants: change relative to 2017 cycle totals

Applicant Status	Ethnic group	2009	2010	2011	2012	2013	2014	2015	2016	2017	2018
Placed	Asian	-29%	-26%	-20%	-22%	-16%	-11%	-5%	-2%	0%	2%
	Black	-31%	-26%	-18%	-17%	-12%	-7%	-2%	2%	0%	-1%
	Mixed	-35%	-31%	-23%	-28%	-21%	-14%	-6%	-2%	0%	1%
	White	-2%	0%	1%	-7%	-2%	1%	3%	3%	0%	-4%
	Other	-52%	-48%	-44%	-31%	-29%	-21%	-12%	-7%	0%	1%

Note: The percentage change is not recorded in the above table for groups with fewer than 10 placed applicants in that cycle or in the 2017 cycle.

E.4 Placed 18 year old applicants from UK by ethnic group: 13 days after A level results day

Placed 18 year old applicants: change relative to 2017 cycle totals



Note: The percentage change is not plotted in the above chart for groups with fewer than 30 placed applicants in any one cycle.

E.5 Placed 18 year old applicants from UK by ethnic group: 13 days after A level results day

Applicant Status	Ethnic group	2009	2010	2011	2012	2013	2014	2015	2016	2017	2018
Placed	Asian	18,640	18,970	20,290	20,390	21,980	23,500	25,540	27,130	28,890	30,510
	Black	6,470	6,920	8,000	8,300	9,640	10,220	11,320	11,760	12,160	12,690
	Mixed	6,140	6,220	7,170	7,060	7,580	8,260	9,390	9,820	10,460	10,610
	White	175,920	175,360	177,180	170,640	174,420	177,380	182,840	183,570	182,710	176,520
	Other	1,440	1,660	1,840	2,120	2,250	2,610	2,940	3,110	3,550	3,710

E.6 Placed 18 year old applicants from UK by ethnic group: 13 days after A level results day

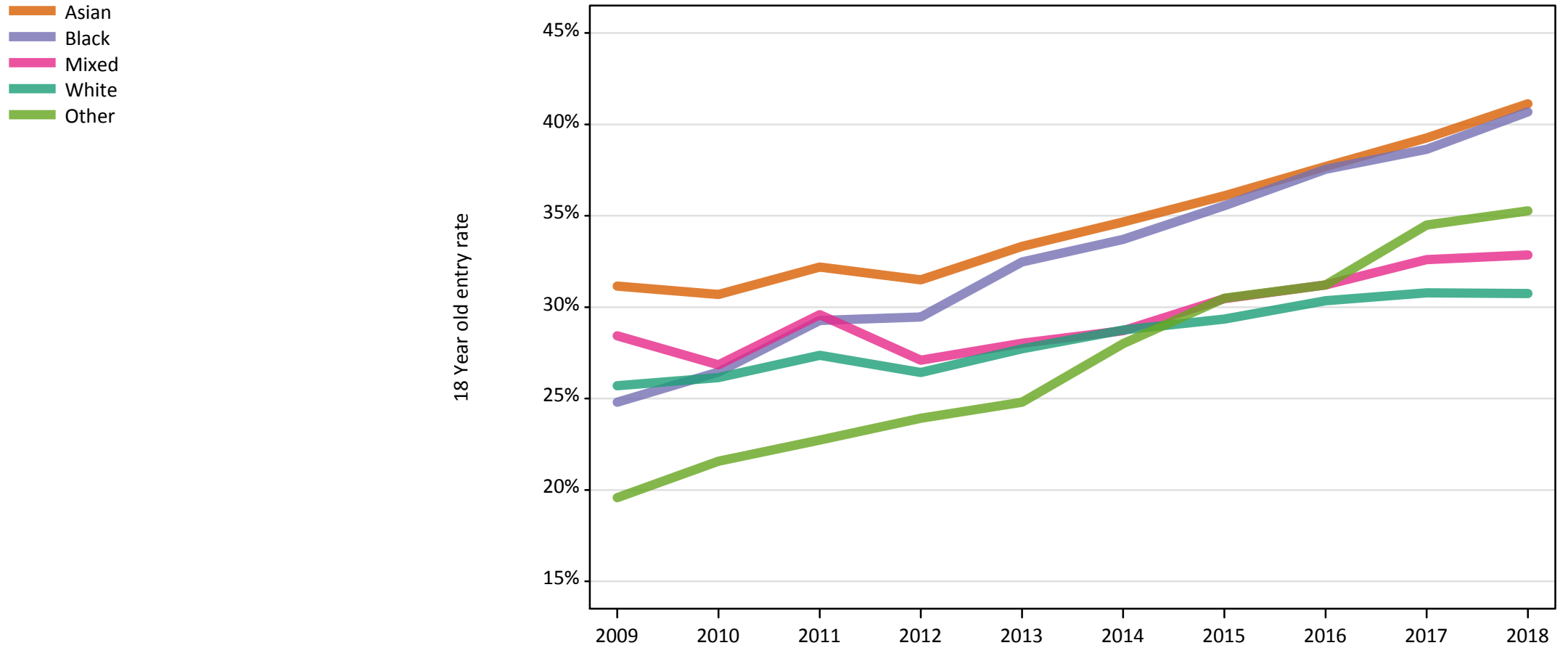
Placed 18 year old applicants: change relative to 2017 cycle totals

Applicant Status	Ethnic group	2009	2010	2011	2012	2013	2014	2015	2016	2017	2018
Placed	Asian	-35%	-34%	-30%	-29%	-24%	-19%	-12%	-6%	0%	6%
	Black	-47%	-43%	-34%	-32%	-21%	-16%	-7%	-3%	0%	4%
	Mixed	-41%	-41%	-32%	-33%	-28%	-21%	-10%	-6%	0%	1%
	White	-4%	-4%	-3%	-7%	-5%	-3%	0%	0%	0%	-3%
	Other	-60%	-53%	-48%	-40%	-37%	-27%	-17%	-13%	0%	4%

Note: The percentage change is not recorded in the above table for groups with fewer than 10 placed applicants in that cycle or in the 2017 cycle.

E.7 Placed 18 year old applicants from UK by ethnic group: 13 days after A level results day

Placed 18 year old applicants: entry rate



E.8 Placed 18 year old applicants from UK by ethnic group: 13 days after A level results day

Placed 18 year old applicants: entry rate

Applicant Status	Ethnic group	2009	2010	2011	2012	2013	2014	2015	2016	2017	2018
Placed	Asian	31.1%	30.7%	32.2%	31.5%	33.3%	34.7%	36.1%	37.7%	39.3%	41.1%
	Black	24.8%	26.4%	29.3%	29.5%	32.5%	33.7%	35.5%	37.5%	38.6%	40.7%
	Mixed	28.4%	26.8%	29.6%	27.1%	28.0%	28.7%	30.5%	31.2%	32.6%	32.9%
	White	25.7%	26.1%	27.4%	26.4%	27.7%	28.8%	29.3%	30.3%	30.8%	30.7%
	Other	19.6%	21.6%	22.7%	23.9%	24.8%	28.0%	30.5%	31.2%	34.5%	35.3%

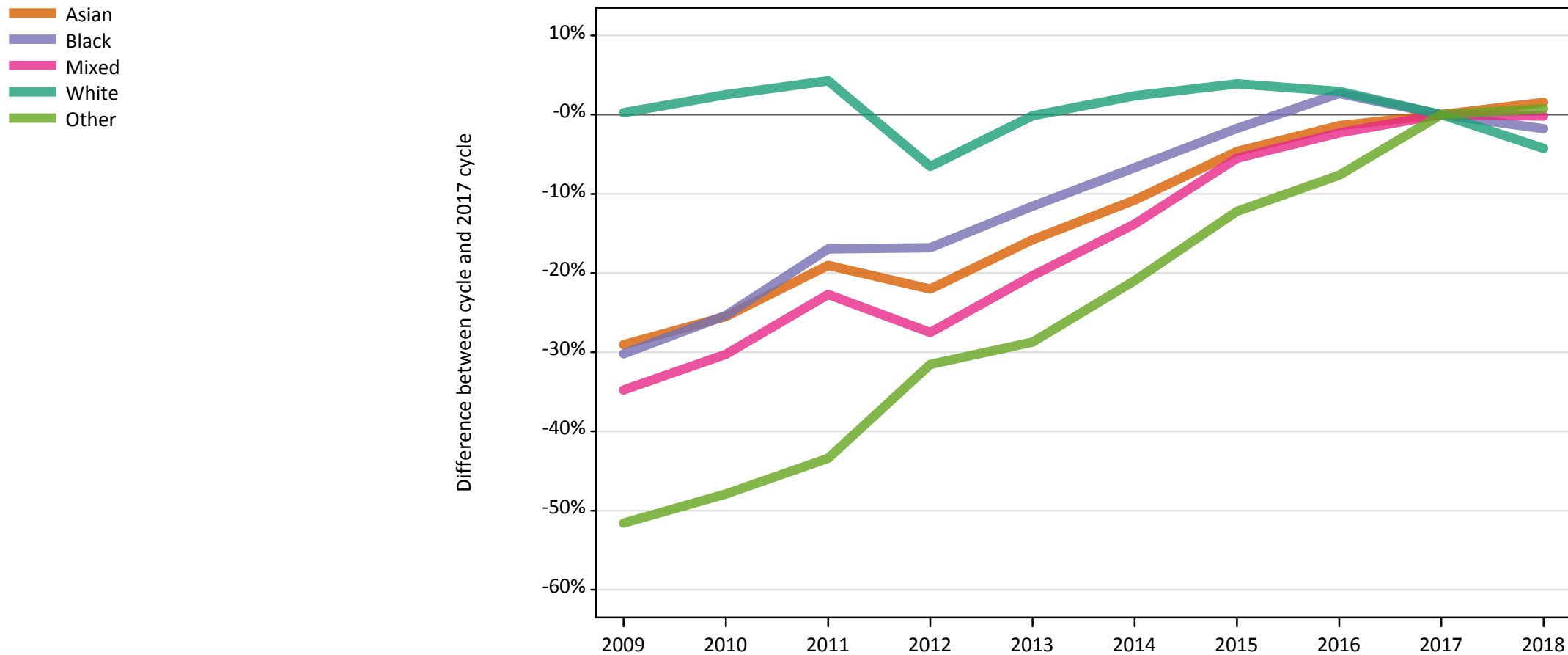
E.9 Placed 18 year old applicants from UK by ethnic group: 13 days after A level results day

Placed 18 year old applicants: entry rate (indexed to 100 = White ethnic group)

Applicant Status	Ethnic group	2009	2010	2011	2012	2013	2014	2015	2016	2017	2018
Placed	Asian	121	117	118	119	120	121	123	124	128	134
	Black	96	101	107	111	117	117	121	124	126	132
	Mixed	111	103	108	103	101	100	104	103	106	107
	White	100	100	100	100	100	100	100	100	100	100
	Other	76	83	83	91	89	97	104	103	112	115

E.10 Placed applicants from England by ethnic group: 13 days after A level results day

Placed applicants: change relative to 2017 cycle totals



Note: The percentage change is not plotted in the above chart for groups with fewer than 30 placed applicants in any one cycle.

E.11 Placed applicants from England by ethnic group: 13 days after A level results day

Applicant Status	Ethnic group	2009	2010	2011	2012	2013	2014	2015	2016	2017	2018
Placed	Asian	33,690	35,370	38,430	37,020	39,970	42,350	45,260	46,810	47,470	48,200
	Black	20,480	21,900	24,370	24,410	25,950	27,380	28,830	30,120	29,340	28,820
	Mixed	11,470	12,260	13,590	12,740	14,000	15,150	16,610	17,170	17,580	17,550
	White	254,160	259,920	264,350	236,880	253,180	259,540	263,400	260,970	253,490	242,690
	Other	3,350	3,610	3,920	4,740	4,940	5,470	6,080	6,400	6,930	6,980

E.12 Placed applicants from England by ethnic group: 13 days after A level results day

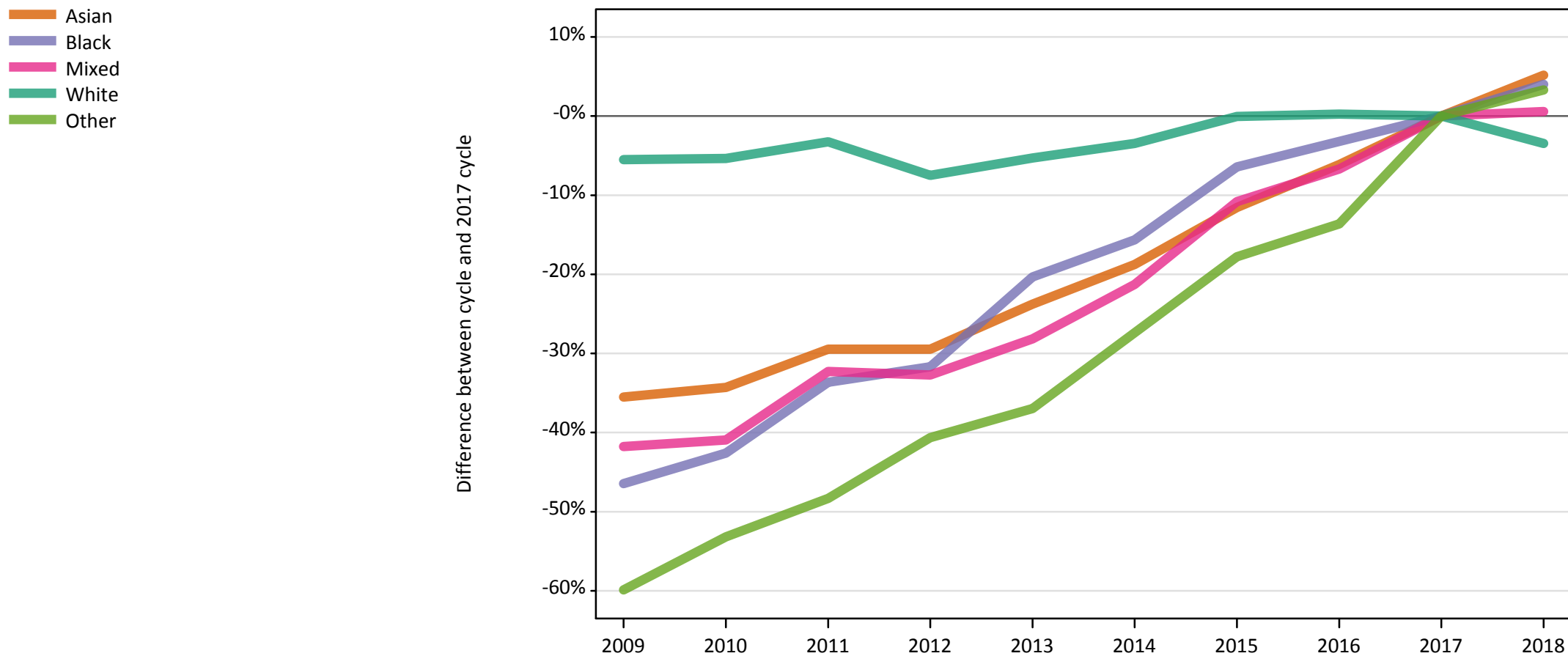
Placed applicants: change relative to 2017 cycle totals

Applicant Status	Ethnic group	2009	2010	2011	2012	2013	2014	2015	2016	2017	2018
Placed	Asian	-29%	-25%	-19%	-22%	-16%	-11%	-5%	-1%	0%	2%
	Black	-30%	-25%	-17%	-17%	-12%	-7%	-2%	3%	0%	-2%
	Mixed	-35%	-30%	-23%	-28%	-20%	-14%	-5%	-2%	0%	-0%
	White	0%	3%	4%	-7%	-0%	2%	4%	3%	0%	-4%
	Other	-52%	-48%	-43%	-32%	-29%	-21%	-12%	-8%	0%	1%

Note: The percentage change is not recorded in the above table for groups with fewer than 10 placed applicants in that cycle or in the 2017 cycle.

E.13 Placed 18 year old applicants from England by ethnic group: 13 days after A level results day

Placed 18 year old applicants: change relative to 2017 cycle totals



Note: The percentage change is not plotted in the above chart for groups with fewer than 30 placed applicants in any one cycle.

E.14 Placed 18 year old applicants from England by ethnic group: 13 days after A level results day

Applicant Status	Ethnic group	2009	2010	2011	2012	2013	2014	2015	2016	2017	2018
Placed	Asian	17,860	18,200	19,540	19,540	21,110	22,500	24,500	25,990	27,690	29,120
	Black	6,380	6,840	7,910	8,140	9,490	10,050	11,150	11,540	11,920	12,400
	Mixed	5,760	5,840	6,700	6,660	7,110	7,790	8,820	9,230	9,890	9,950
	White	143,250	143,470	146,680	140,250	143,590	146,360	151,540	151,990	151,600	146,350
	Other	1,370	1,600	1,770	2,030	2,160	2,490	2,820	2,960	3,430	3,540

E.15 Placed 18 year old applicants from England by ethnic group: 13 days after A level results day

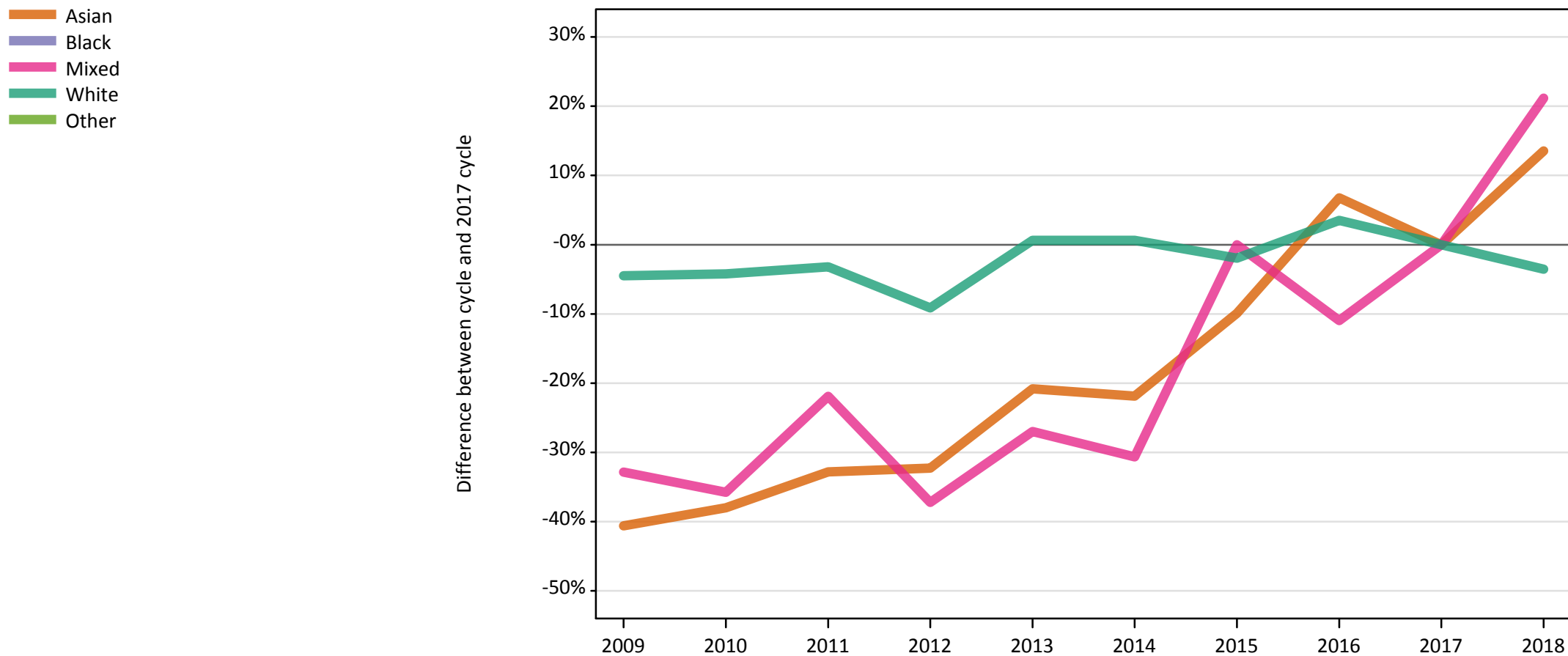
Placed 18 year old applicants: change relative to 2017 cycle totals

Applicant Status	Ethnic group	2009	2010	2011	2012	2013	2014	2015	2016	2017	2018
Placed	Asian	-35%	-34%	-29%	-29%	-24%	-19%	-12%	-6%	0%	5%
	Black	-46%	-43%	-34%	-32%	-20%	-16%	-6%	-3%	0%	4%
	Mixed	-42%	-41%	-32%	-33%	-28%	-21%	-11%	-7%	0%	1%
	White	-6%	-5%	-3%	-7%	-5%	-3%	-0%	0%	0%	-3%
	Other	-60%	-53%	-48%	-41%	-37%	-27%	-18%	-14%	0%	3%

Note: The percentage change is not recorded in the above table for groups with fewer than 10 placed applicants in that cycle or in the 2017 cycle.

E.16 Placed applicants from Northern Ireland by ethnic group: 13 days after A level results day

Placed applicants: change relative to 2017 cycle totals



Note: The percentage change is not plotted in the above chart for groups with fewer than 30 placed applicants in any one cycle.

E.17 Placed applicants from Northern Ireland by ethnic group: 13 days after A level results day

Applicant Status	Ethnic group	2009	2010	2011	2012	2013	2014	2015	2016	2017	2018
Placed	Asian	110	120	130	130	150	150	170	210	190	220
	Black	10	20	20	30	30	50	40	60	60	50
	Mixed	90	90	110	90	100	100	140	120	140	170
	White	13,090	13,130	13,270	12,450	13,790	13,790	13,440	14,180	13,700	13,220
	Other	10	20	10	10	10	20	10	20	20	20

E.18 Placed applicants from Northern Ireland by ethnic group: 13 days after A level results day

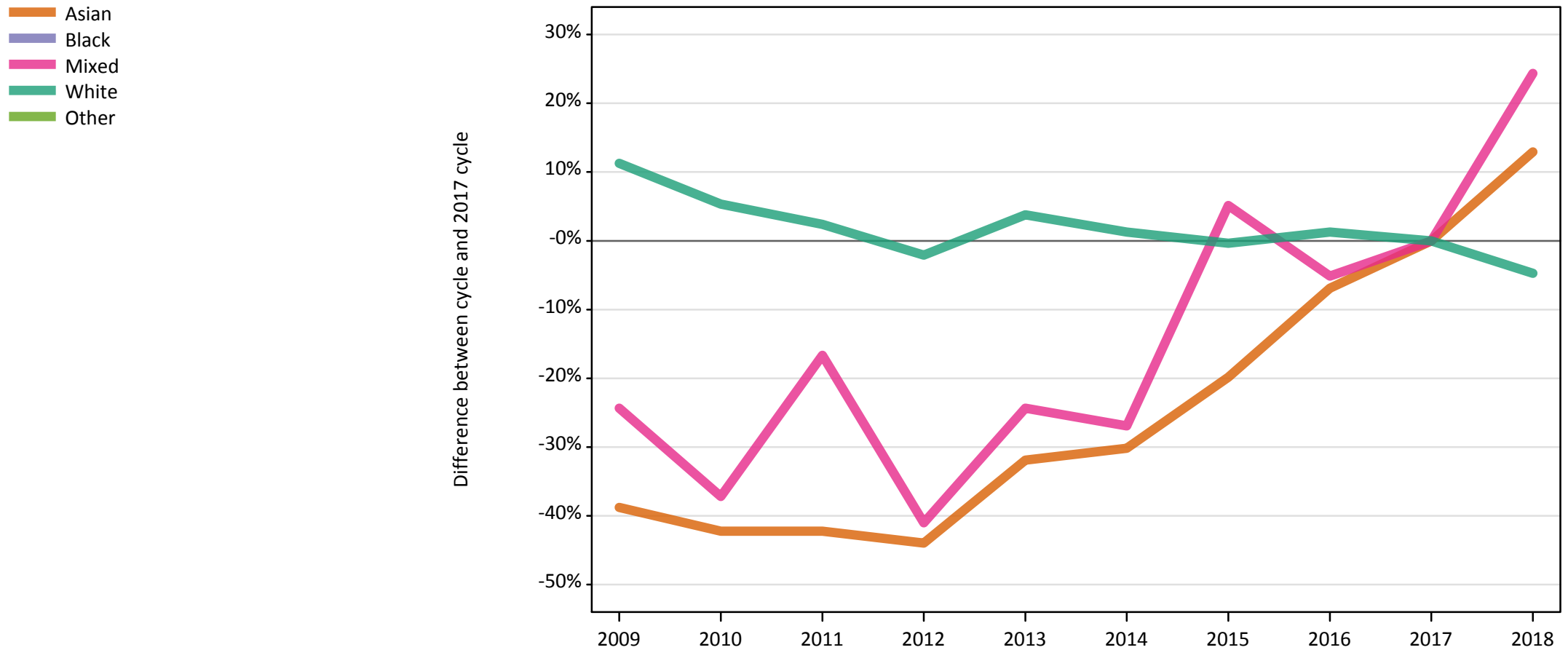
Placed applicants: change relative to 2017 cycle totals

Applicant Status	Ethnic group	2009	2010	2011	2012	2013	2014	2015	2016	2017	2018
Placed	Asian	-41%	-38%	-33%	-32%	-21%	-22%	-10%	7%	0%	14%
	Black	-75%	-68%	-67%	-54%	-42%	-16%	-39%	-4%	0%	-5%
	Mixed	-33%	-36%	-22%	-37%	-27%	-31%	0%	-11%	0%	21%
	White	-4%	-4%	-3%	-9%	1%	1%	-2%	4%	0%	-4%
	Other	-67%	-29%	-54%	-42%	-50%	-8%	-50%	-8%	0%	-4%

Note: The percentage change is not recorded in the above table for groups with fewer than 10 placed applicants in that cycle or in the 2017 cycle.

E.19 Placed 18 year old applicants from Northern Ireland by ethnic group: 13 days after A level results day

Placed 18 year old applicants: change relative to 2017 cycle totals



Note: The percentage change is not plotted in the above chart for groups with fewer than 30 placed applicants in any one cycle.

E.20 Placed 18 year old applicants from Northern Ireland by ethnic group: 13 days after A level results day

Applicant Status	Ethnic group	2009	2010	2011	2012	2013	2014	2015	2016	2017	2018
Placed	Asian	70	70	70	70	80	80	90	110	120	130
	Black	10	0	10	10	20	20	10	20	20	10
	Mixed	60	50	70	50	60	60	80	70	80	100
	White	9,170	8,680	8,440	8,070	8,550	8,340	8,210	8,340	8,240	7,850
	Other	0	10	10	10	0	10	0	10	10	10

E.21 Placed 18 year old applicants from Northern Ireland by ethnic group: 13 days after A level results day

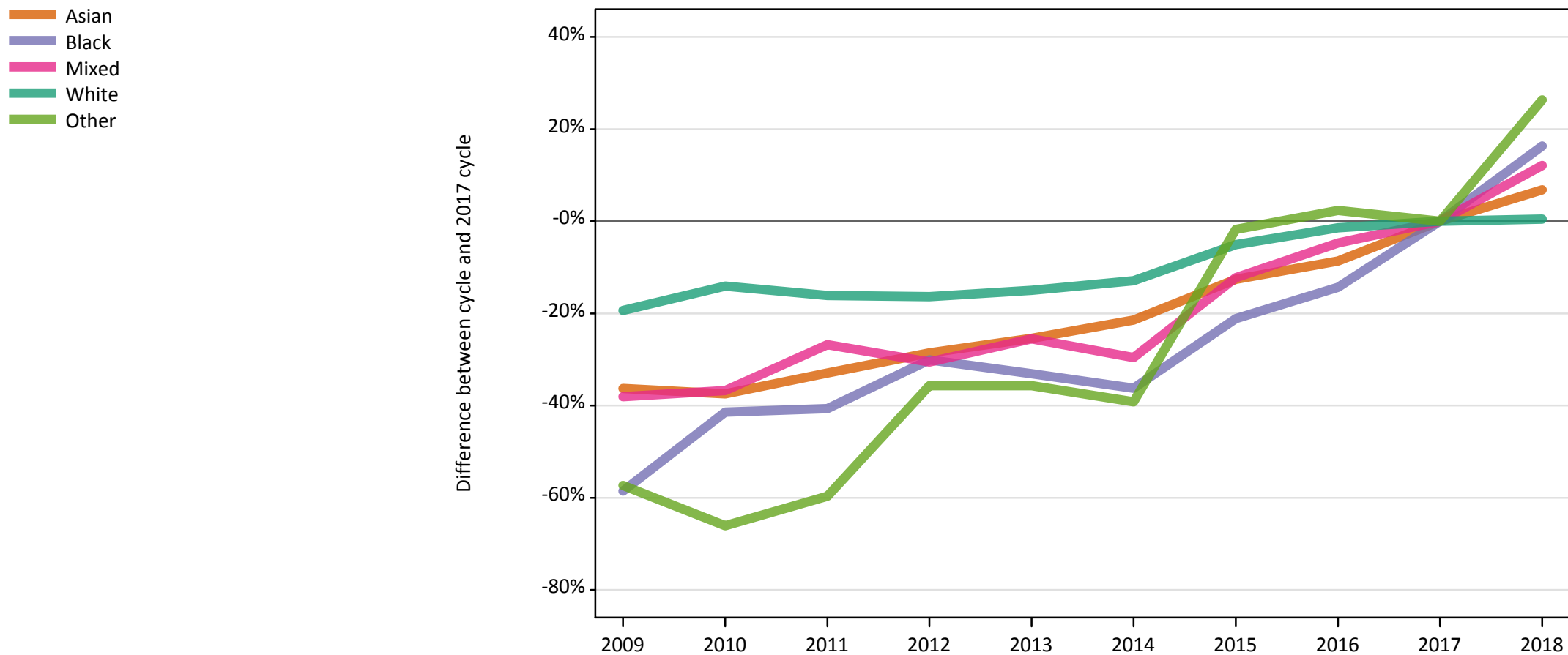
Placed 18 year old applicants: change relative to 2017 cycle totals

Applicant Status	Ethnic group	2009	2010	2011	2012	2013	2014	2015	2016	2017	2018
Placed	Asian	-39%	-42%	-42%	-44%	-32%	-30%	-20%	-7%	0%	13%
	Black	-68%		-53%	-53%	-16%	-5%	-42%	-5%	0%	-26%
	Mixed	-24%	-37%	-17%	-41%	-24%	-27%	5%	-5%	0%	24%
	White	11%	5%	2%	-2%	4%	1%	-0%	1%	0%	-5%
	Other		-30%	-50%	-50%		20%		0%	0%	30%

Note: The percentage change is not recorded in the above table for groups with fewer than 10 placed applicants in that cycle or in the 2017 cycle.

E.22 Placed applicants from Scotland by ethnic group: 13 days after A level results day

Placed applicants: change relative to 2017 cycle totals



Note: The percentage change is not plotted in the above chart for groups with fewer than 30 placed applicants in any one cycle.

E.23 Placed applicants from Scotland by ethnic group: 13 days after A level results day

Applicant Status	Ethnic group	2009	2010	2011	2012	2013	2014	2015	2016	2017	2018
Placed	Asian	970	950	1,020	1,080	1,130	1,190	1,330	1,390	1,520	1,620
	Black	210	290	300	350	340	320	400	430	500	580
	Mixed	380	390	450	430	460	430	540	580	610	690
	White	25,040	26,670	26,040	25,960	26,380	27,030	29,460	30,610	31,040	31,180
	Other	70	60	70	110	110	100	170	180	170	220

E.24 Placed applicants from Scotland by ethnic group: 13 days after A level results day

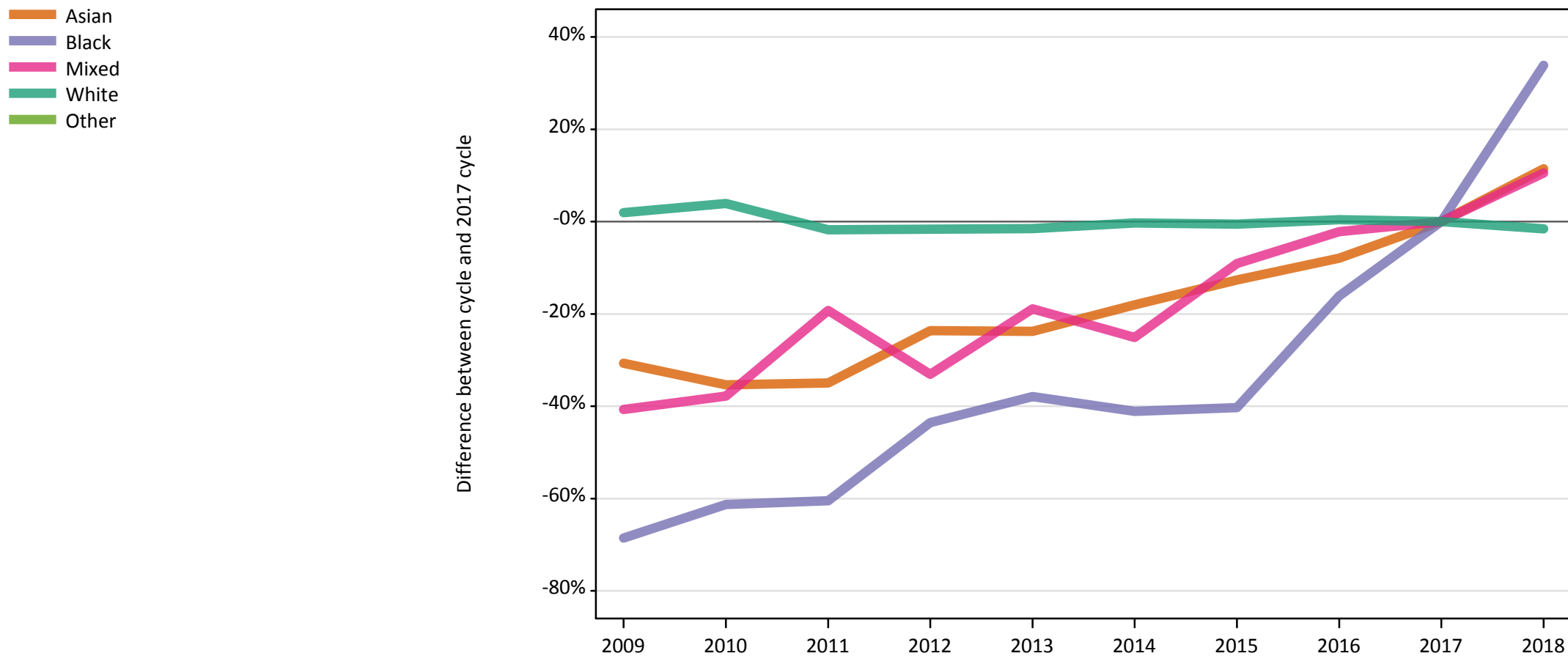
Placed applicants: change relative to 2017 cycle totals

Applicant Status	Ethnic group	2009	2010	2011	2012	2013	2014	2015	2016	2017	2018
Placed	Asian	-36%	-37%	-33%	-29%	-25%	-21%	-13%	-9%	0%	7%
	Black	-59%	-41%	-41%	-30%	-33%	-36%	-21%	-14%	0%	16%
	Mixed	-38%	-37%	-27%	-31%	-25%	-30%	-12%	-5%	0%	12%
	White	-19%	-14%	-16%	-16%	-15%	-13%	-5%	-1%	0%	0%
	Other	-57%	-66%	-60%	-36%	-36%	-39%	-2%	2%	0%	26%

Note: The percentage change is not recorded in the above table for groups with fewer than 10 placed applicants in that cycle or in the 2017 cycle.

E.25 Placed 18 year old applicants from Scotland by ethnic group: 13 days after A level results day

Placed 18 year old applicants: change relative to 2017 cycle totals



Note: The percentage change is not plotted in the above chart for groups with fewer than 30 placed applicants in any one cycle.

E.26 Placed 18 year old applicants from Scotland by ethnic group: 13 days after A level results day

Applicant Status	Ethnic group	2009	2010	2011	2012	2013	2014	2015	2016	2017	2018
Placed	Asian	470	440	440	520	520	560	600	630	680	760
	Black	40	50	50	70	80	70	70	100	120	170
	Mixed	160	170	220	180	220	210	250	270	280	300
	White	13,700	13,970	13,200	13,230	13,240	13,400	13,370	13,500	13,440	13,230
	Other	30	20	30	40	40	40	60	60	60	80

E.27 Placed 18 year old applicants from Scotland by ethnic group: 13 days after A level results day

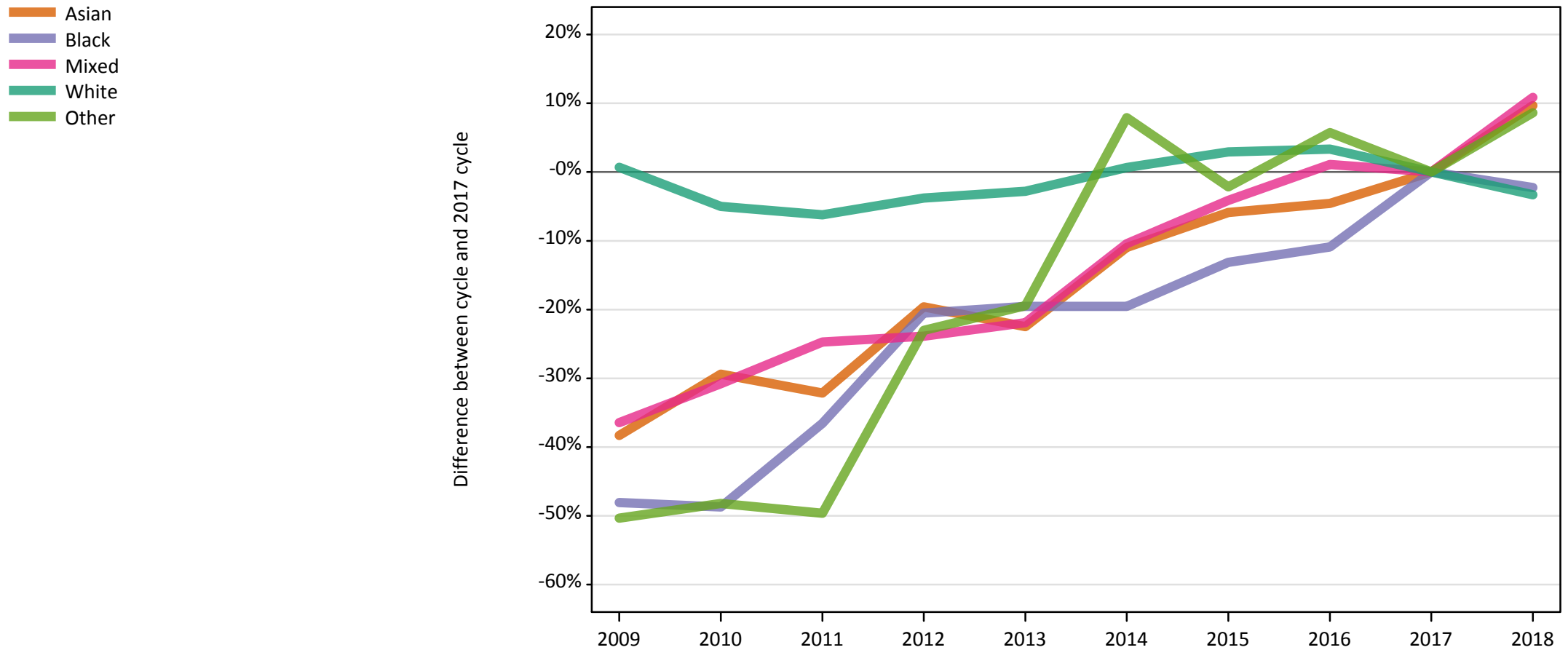
Placed 18 year old applicants: change relative to 2017 cycle totals

Applicant Status	Ethnic group	2009	2010	2011	2012	2013	2014	2015	2016	2017	2018
Placed	Asian	-31%	-35%	-35%	-24%	-24%	-18%	-13%	-8%	0%	11%
	Black	-69%	-61%	-60%	-44%	-38%	-41%	-40%	-16%	0%	34%
	Mixed	-41%	-38%	-19%	-33%	-19%	-25%	-9%	-2%	0%	11%
	White	2%	4%	-2%	-2%	-2%	-0%	-1%	0%	0%	-2%
	Other	-56%	-73%	-49%	-43%	-33%	-41%	-3%	0%	0%	24%

Note: The percentage change is not recorded in the above table for groups with fewer than 10 placed applicants in that cycle or in the 2017 cycle.

E.28 Placed applicants from Wales by ethnic group: 13 days after A level results day

Placed applicants: change relative to 2017 cycle totals



Note: The percentage change is not plotted in the above chart for groups with fewer than 30 placed applicants in any one cycle.

E.29 Placed applicants from Wales by ethnic group: 13 days after A level results day

Applicant Status	Ethnic group	2009	2010	2011	2012	2013	2014	2015	2016	2017	2018
Placed	Asian	470	540	520	620	590	680	720	730	770	840
	Black	160	160	200	250	250	250	270	280	310	310
	Mixed	290	320	350	350	360	410	440	470	460	510
	White	17,080	16,110	15,910	16,320	16,490	17,070	17,460	17,530	16,960	16,400
	Other	70	70	70	110	110	150	140	150	140	150

E.30 Placed applicants from Wales by ethnic group: 13 days after A level results day

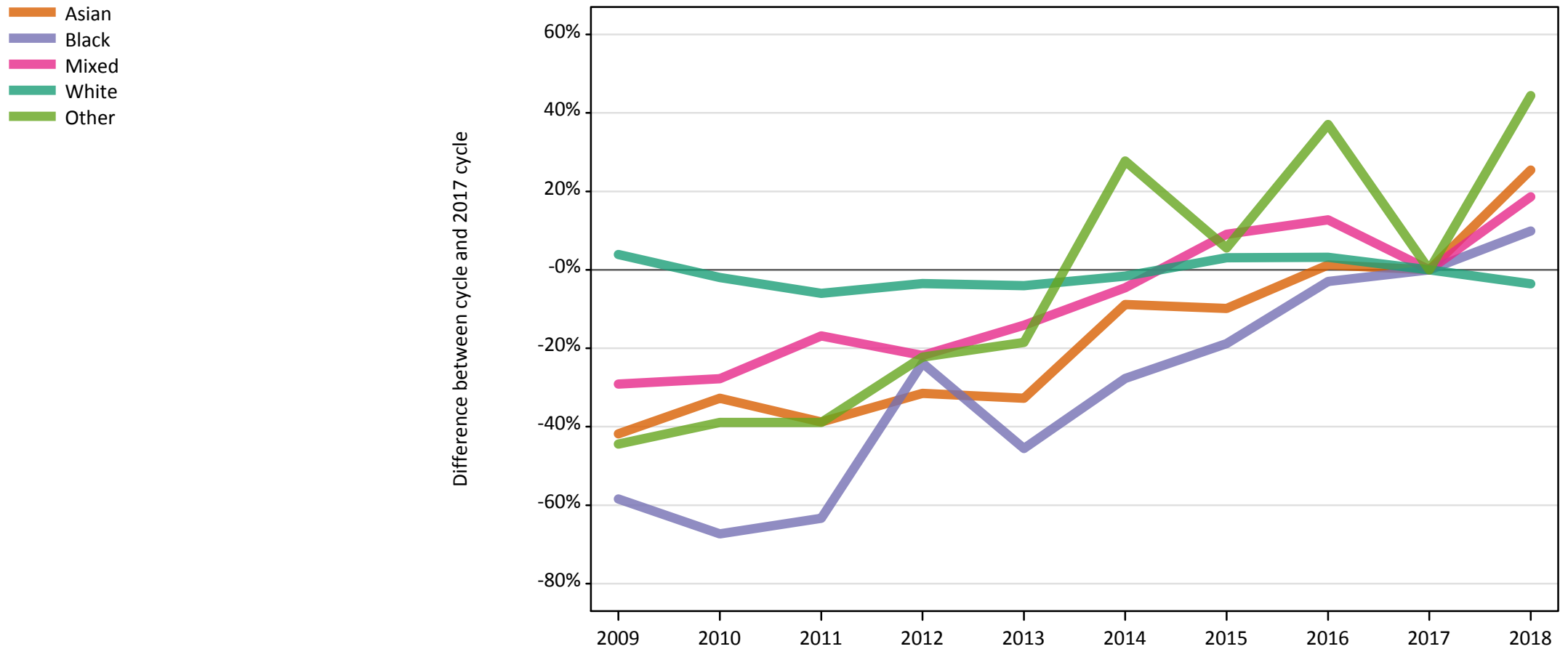
Placed applicants: change relative to 2017 cycle totals

Applicant Status	Ethnic group	2009	2010	2011	2012	2013	2014	2015	2016	2017	2018
Placed	Asian	-38%	-29%	-32%	-20%	-22%	-11%	-6%	-5%	0%	10%
	Black	-48%	-49%	-37%	-21%	-20%	-20%	-13%	-11%	0%	-2%
	Mixed	-36%	-31%	-25%	-24%	-22%	-10%	-4%	1%	0%	11%
	White	1%	-5%	-6%	-4%	-3%	1%	3%	3%	0%	-3%
	Other	-50%	-48%	-50%	-23%	-19%	8%	-2%	6%	0%	9%

Note: The percentage change is not recorded in the above table for groups with fewer than 10 placed applicants in that cycle or in the 2017 cycle.

E.31 Placed 18 year old applicants from Wales by ethnic group: 13 days after A level results day

Placed 18 year old applicants: change relative to 2017 cycle totals



Note: The percentage change is not plotted in the above chart for groups with fewer than 30 placed applicants in any one cycle.

E.32 Placed 18 year old applicants from Wales by ethnic group: 13 days after A level results day

Applicant Status	Ethnic group	2009	2010	2011	2012	2013	2014	2015	2016	2017	2018
Placed	Asian	230	270	240	270	270	360	360	400	400	500
	Black	40	30	40	80	60	70	80	100	100	110
	Mixed	160	160	180	170	190	210	240	250	220	260
	White	9,800	9,250	8,870	9,100	9,050	9,280	9,720	9,740	9,430	9,100
	Other	30	30	30	40	40	70	60	70	50	80

E.33 Placed 18 year old applicants from Wales by ethnic group: 13 days after A level results day

Placed 18 year old applicants: change relative to 2017 cycle totals

Applicant Status	Ethnic group	2009	2010	2011	2012	2013	2014	2015	2016	2017	2018
Placed	Asian	-42%	-33%	-39%	-31%	-33%	-9%	-10%	1%	0%	25%
	Black	-58%	-67%	-63%	-24%	-46%	-28%	-19%	-3%	0%	10%
	Mixed	-29%	-28%	-17%	-22%	-14%	-5%	9%	13%	0%	19%
	White	4%	-2%	-6%	-4%	-4%	-2%	3%	3%	0%	-4%
	Other	-44%	-39%	-39%	-22%	-19%	28%	6%	37%	0%	44%

Note: The percentage change is not recorded in the above table for groups with fewer than 10 placed applicants in that cycle or in the 2017 cycle.