

Daily Clearing Analysis: Country

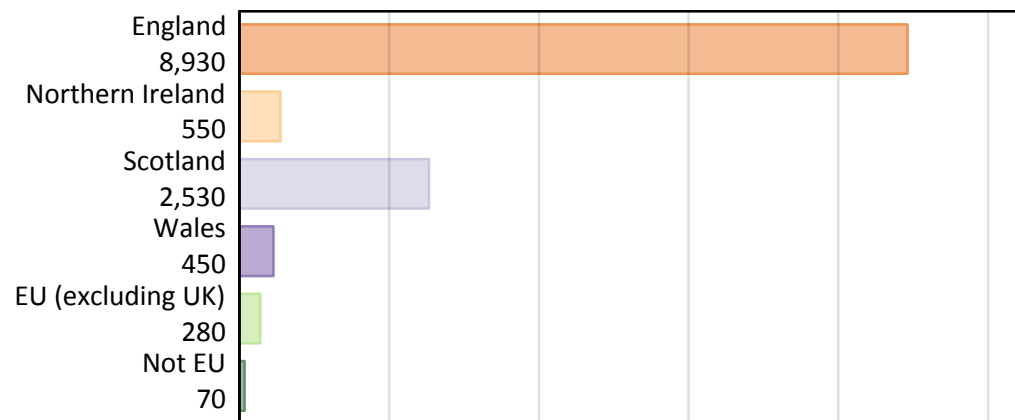
B7 Nursing analysis at 00:05 on Tuesday 7 August 2018 (SQA results day)

BB.1 Placed applicants to nursing by country of provider and domicile, 2018 cycle

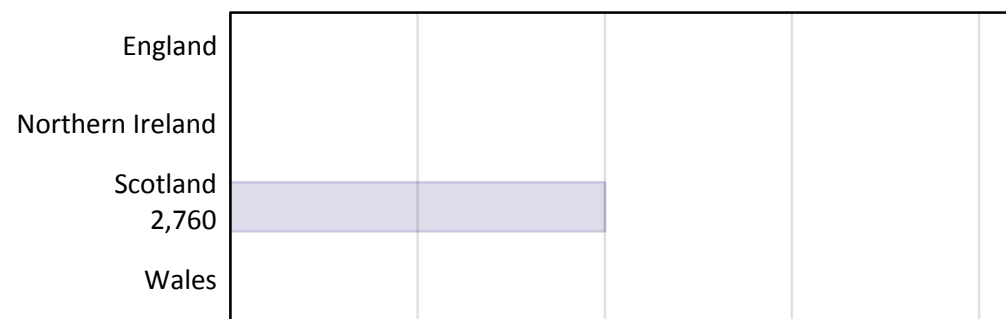
Domicile of applicant	Country of Provider				
	England	Northern Ireland	Scotland	Wales	UK
England			40		8,930
Northern Ireland			40		550
Scotland			2,520		2,530
Wales			0		450
EU (excluding UK)			150		280
Not EU			10		70
All			2,760		12,790

Note that figures for England, Northern Ireland, and Wales are not reported here.

BB.2 Placed applicants to nursing by domicile group



BB.3 Placed applicants to nursing by country of provider

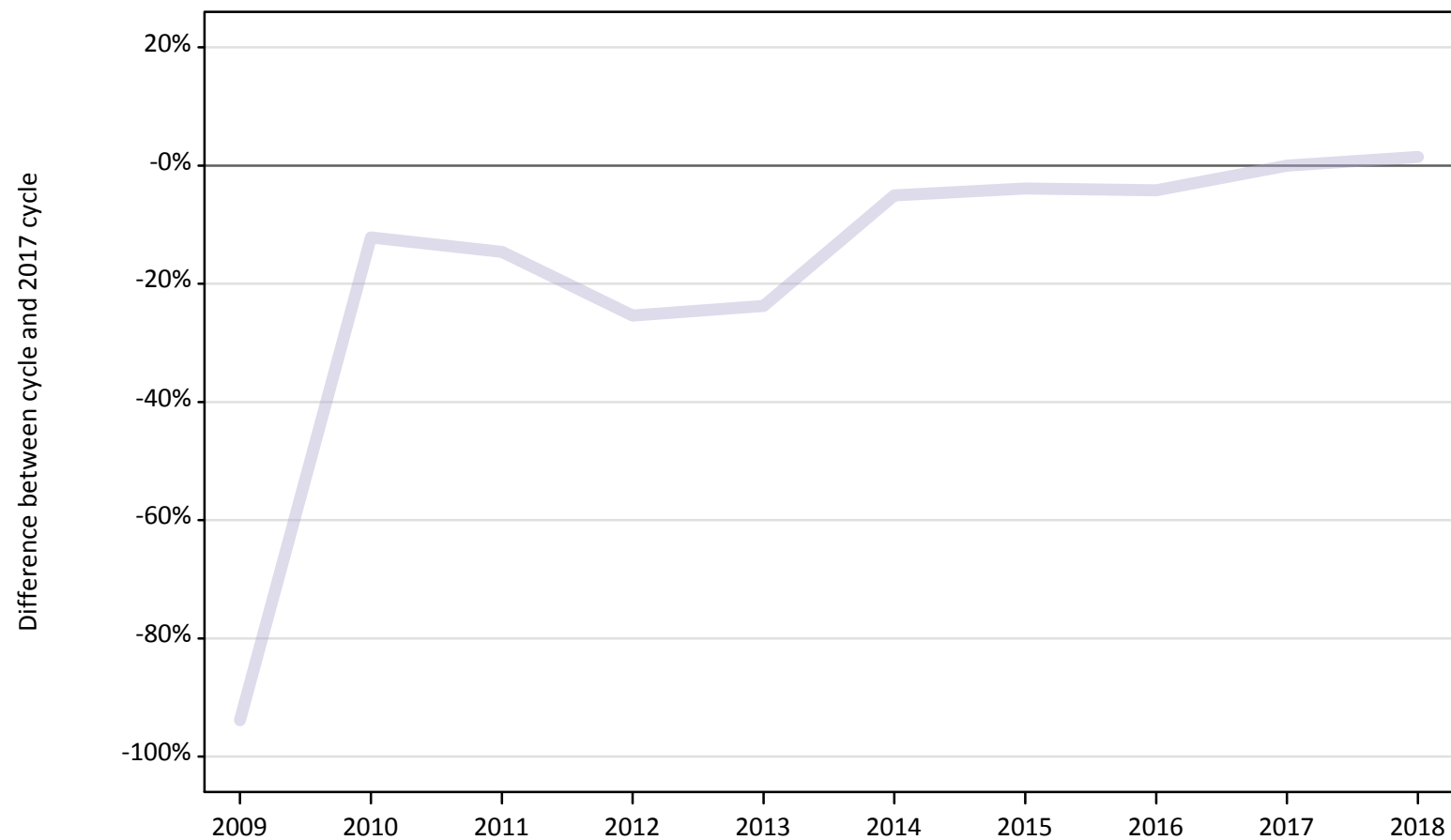


Note that figures for England, Northern Ireland, and Wales are not reported here.

BB.4 Placed applicants to nursing at SQA results day: providers in Scotland

Selected applicant domiciles: difference between cycle and 2017 cycle (at SQA results day)

- England
- Northern Ireland
- Scotland
- Wales
- EU (excluding UK)
- Not EU



Note: The percentage change is not plotted in the above chart for groups with fewer than 30 placed applicants in any one cycle.

BB.5 Placed applicants to nursing at SQA results day: providers in Scotland

Placed applicants to nursing by domicile (at SQA results day)

Domicile of applicant	2009	2010	2011	2012	2013	2014	2015	2016	2017	2018
England	10	50	60	50	50	60	70	90	50	40
Northern Ireland	0	50	50	40	50	70	50	80	50	40
Scotland	150	2,190	2,130	1,860	1,900	2,360	2,390	2,380	2,490	2,520
Wales	0	0	0	0	0	0	0	0	0	0
EU (excluding UK)	10	60	60	50	90	60	60	60	120	150
Not EU	10	10	20	10	10	0	10	10	10	10

BB.6 Placed applicants to nursing at SQA results day: providers in Scotland

Selected applicant domiciles: difference between cycle and 2017 cycle (at SQA results day)

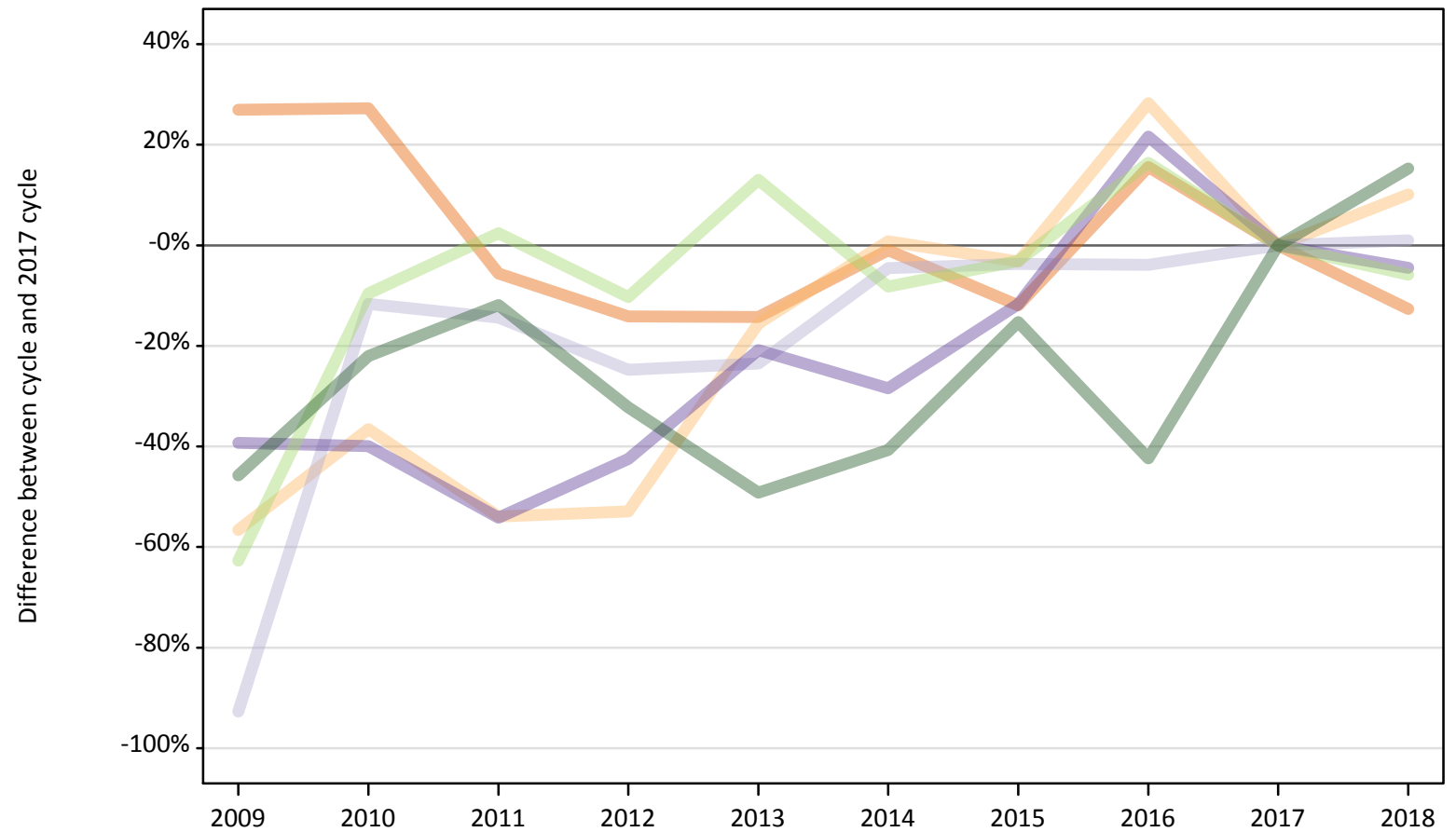
Domicile of applicant	2009	2010	2011	2012	2013	2014	2015	2016	2017	2018
England	-81%	-2%	10%	-13%	2%	13%	27%	63%	0%	-21%
Northern Ireland		-4%	-6%	-27%	-4%	37%	6%	49%	0%	-29%
Scotland	-94%	-12%	-15%	-25%	-24%	-5%	-4%	-4%	0%	1%
Wales										
EU (excluding UK)	-95%	-53%	-46%	-55%	-25%	-50%	-53%	-46%	0%	24%
Not EU	-40%	30%	60%	-10%	-40%		40%	0%	0%	0%

Note: The percentage change is not recorded in the above table for groups with fewer than 10 placed applicants in that cycle or in the 2017 cycle.

BB.7 Placed applicants to nursing at SQA results day: providers in the UK

Selected applicant domiciles: difference between cycle and 2017 cycle (at SQA results day)

- England
- Northern Ireland
- Scotland
- Wales
- EU (excluding UK)
- Not EU



Note: The percentage change is not plotted in the above chart for groups with fewer than 30 placed applicants in any one cycle.

BB.8 Placed applicants to nursing at SQA results day: providers in the UK

Placed applicants to nursing by domicile (at SQA results day)

Domicile of applicant	2009	2010	2011	2012	2013	2014	2015	2016	2017	2018
England	12,970	13,010	9,650	8,770	8,760	10,120	9,000	11,810	10,220	8,930
Northern Ireland	220	310	230	230	420	500	480	640	500	550
Scotland	180	2,210	2,140	1,880	1,920	2,390	2,410	2,410	2,500	2,530
Wales	290	280	220	270	370	340	420	570	470	450
EU (excluding UK)	110	260	300	260	330	270	280	340	290	280
Not EU	30	50	50	40	30	40	50	30	60	70

BB.9 Placed applicants to nursing at SQA results day: providers in the UK

Selected applicant domiciles: difference between cycle and 2017 cycle (at SQA results day)

Domicile of applicant	2009	2010	2011	2012	2013	2014	2015	2016	2017	2018
England	27%	27%	-6%	-14%	-14%	-1%	-12%	16%	0%	-13%
Northern Ireland	-57%	-37%	-54%	-53%	-16%	1%	-3%	28%	0%	10%
Scotland	-93%	-12%	-14%	-25%	-23%	-5%	-4%	-4%	0%	1%
Wales	-39%	-40%	-54%	-42%	-21%	-28%	-12%	22%	0%	-4%
EU (excluding UK)	-63%	-10%	2%	-10%	13%	-8%	-3%	16%	0%	-6%
Not EU	-46%	-22%	-12%	-32%	-49%	-41%	-15%	-42%	0%	15%

Note: The percentage change is not recorded in the above table for groups with fewer than 10 placed applicants in that cycle or in the 2017 cycle.