

Daily Clearing Analysis: Country

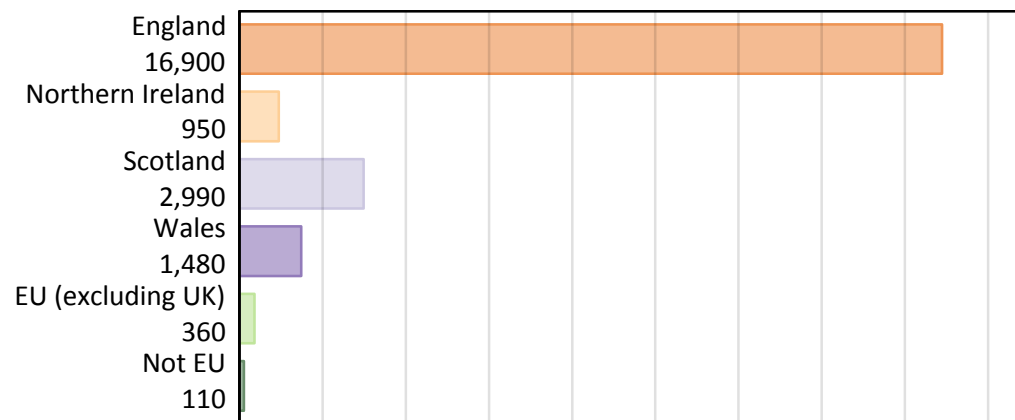
B7 Nursing analysis at 00:05 on Tuesday 21 August 2018 (5 days after A level results day)

BB.1 Placed applicants to nursing by country of provider and domicile, 2018 cycle

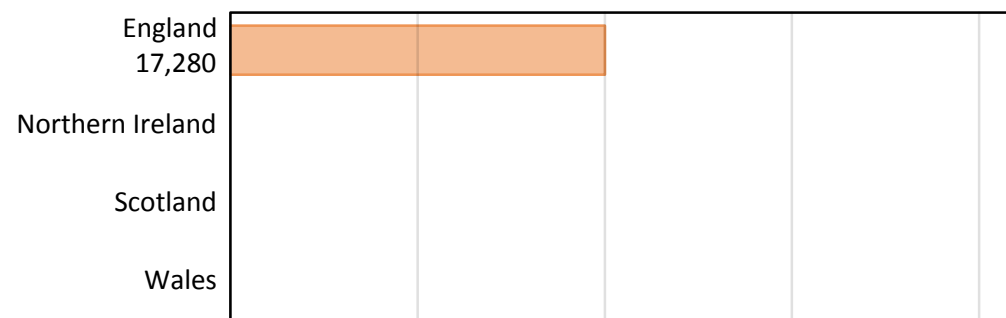
Domicile of applicant	Country of provider				
	England	Northern Ireland	Scotland	Wales	UK
England	16,580				16,900
Northern Ireland	170				950
Scotland	20				2,990
Wales	290				1,480
EU (excluding UK)	140				360
Not EU	90				110
All	17,280				22,770

Note that figures for providers in Northern Ireland, Scotland, and Wales are not reported here.

BB.2 Placed applicants to nursing by domicile group



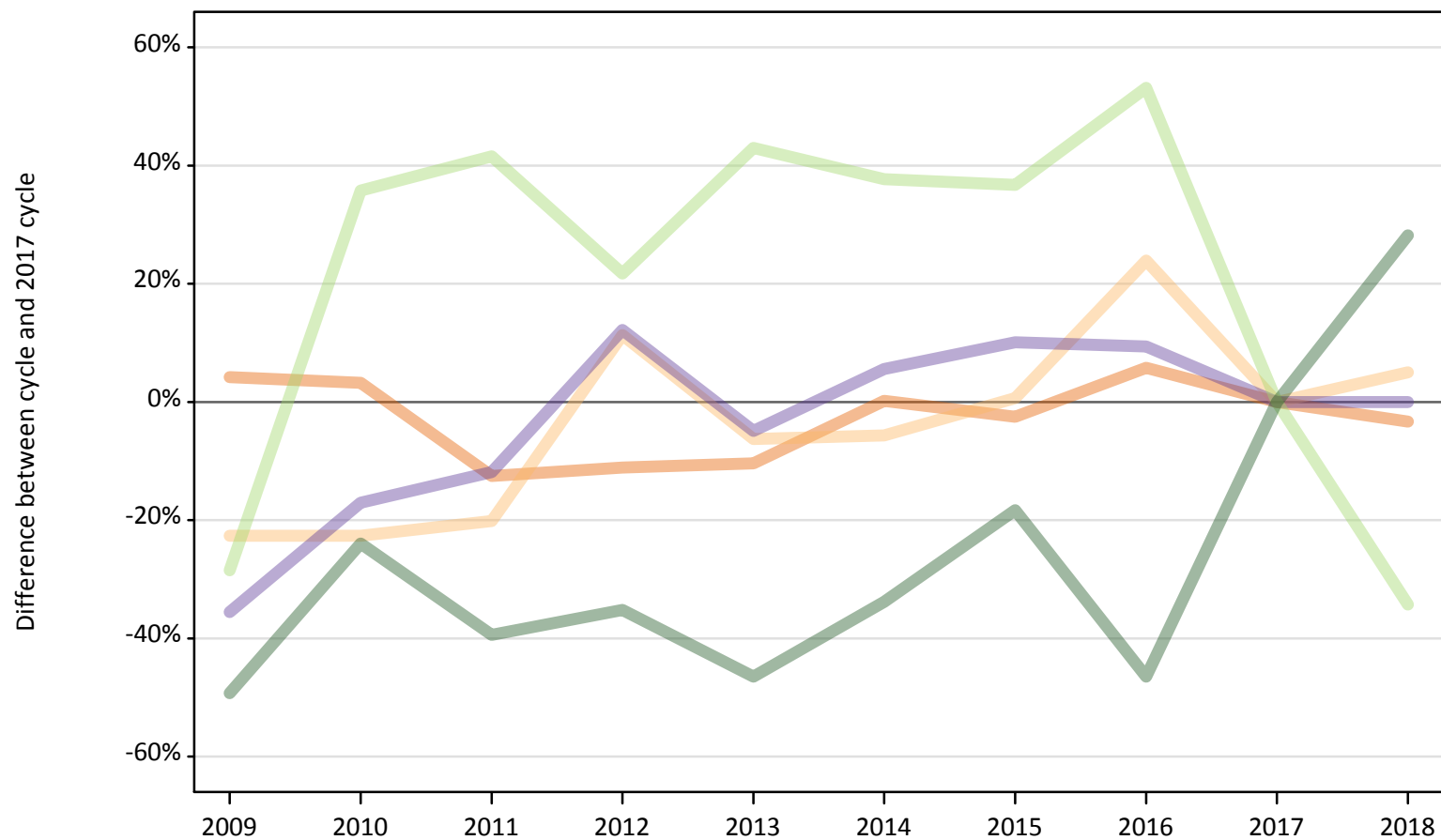
BB.3 Placed applicants to nursing by country of provider



Note that figures for providers in Northern Ireland, Scotland, and Wales are not reported here.

BB.4 Placed applicants to nursing at 5 days after A level results day: providers in England
 Selected applicant domiciles: difference between cycle and 2017 cycle (at 5 days after A level results day)

- England
- Northern Ireland
- Scotland
- Wales
- EU (excluding UK)
- Not EU



Note: The percentage change is not plotted in the above chart for groups with fewer than 30 placed applicants in any one cycle.

BB.5 Placed applicants to nursing at 5 days after A level results day: providers in England

Placed applicants to nursing by domicile (at 5 days after A level results day)

Domicile of applicant	2009	2010	2011	2012	2013	2014	2015	2016	2017	2018
England	17,880	17,710	15,010	15,250	15,370	17,180	16,720	18,140	17,150	16,580
Northern Ireland	120	120	130	180	150	150	160	200	160	170
Scotland	40	30	30	40	20	40	30	30	20	20
Wales	190	240	250	320	270	300	320	310	290	290
EU (excluding UK)	150	280	290	250	300	290	280	320	210	140
Not EU	40	50	40	50	40	50	60	40	70	90

BB.6 Placed applicants to nursing at 5 days after A level results day: providers in England

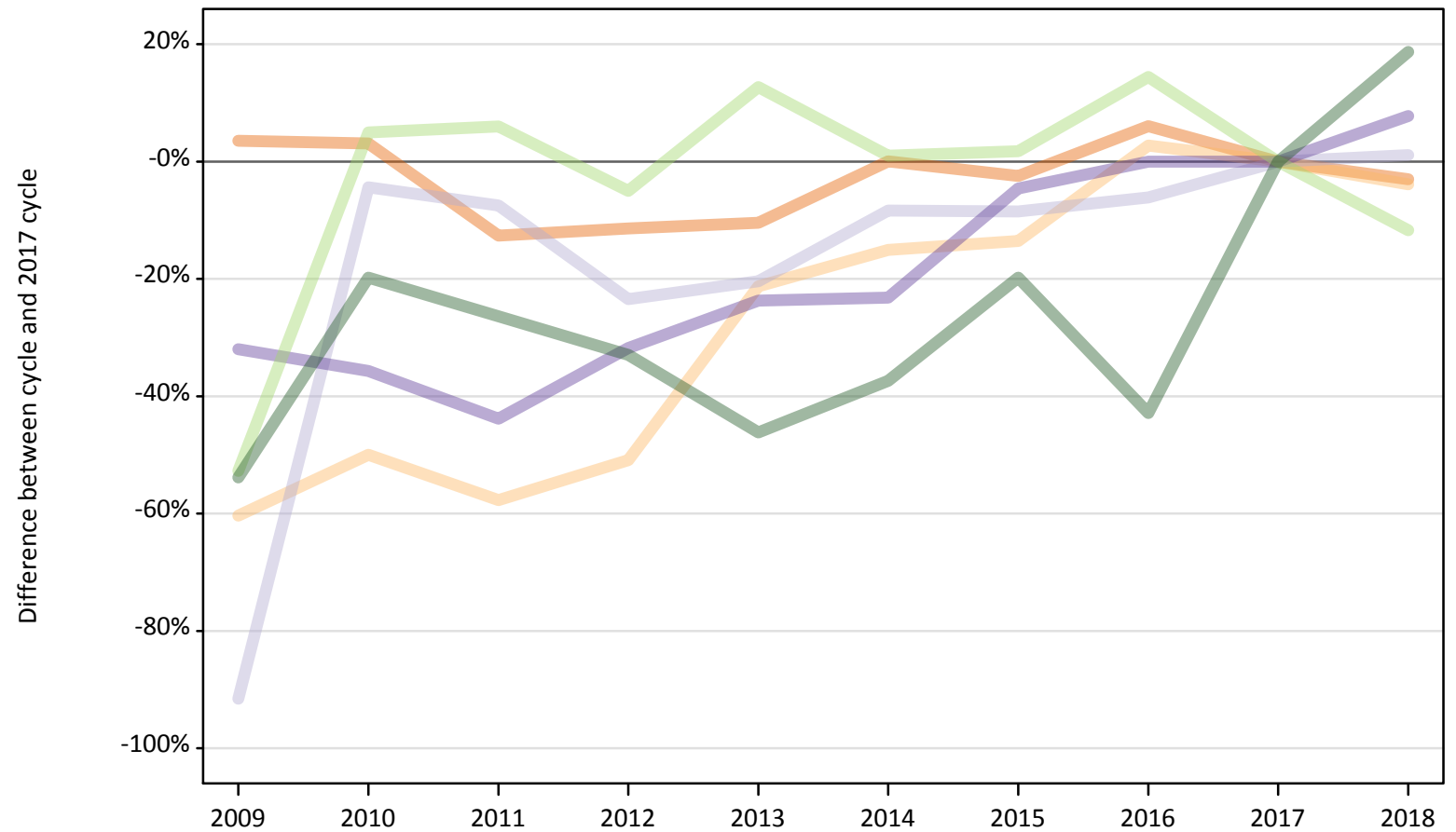
Selected applicant domiciles: difference between cycle and 2017 cycle (at 5 days after A level results day)

Domicile of applicant	2009	2010	2011	2012	2013	2014	2015	2016	2017	2018
England	4%	3%	-13%	-11%	-10%	0%	-3%	6%	0%	-3%
Northern Ireland	-23%	-23%	-20%	11%	-6%	-6%	1%	24%	0%	5%
Scotland	90%	57%	38%	90%	-5%	76%	24%	38%	0%	-24%
Wales	-36%	-17%	-12%	12%	-5%	6%	10%	9%	0%	0%
EU (excluding UK)	-29%	36%	42%	22%	43%	38%	37%	53%	0%	-34%
Not EU	-49%	-24%	-39%	-35%	-46%	-34%	-18%	-46%	0%	28%

Note: The percentage change is not recorded in the above table for groups with fewer than 10 placed applicants in that cycle or in the 2017 cycle.

BB.7 Placed applicants to nursing at 5 days after A level results day: providers in the UK
 Selected applicant domiciles: difference between cycle and 2017 cycle (at 5 days after A level results day)

- England
- Northern Ireland
- Scotland
- Wales
- EU (excluding UK)
- Not EU



Note: The percentage change is not plotted in the above chart for groups with fewer than 30 placed applicants in any one cycle.

BB.8 Placed applicants to nursing at 5 days after A level results day: providers in the UK

Placed applicants to nursing by domicile (at 5 days after A level results day)

Domicile of applicant	2009	2010	2011	2012	2013	2014	2015	2016	2017	2018
England	18,040	17,960	15,230	15,440	15,610	17,430	17,000	18,480	17,430	16,900
Northern Ireland	390	490	420	480	780	840	850	1,010	980	950
Scotland	250	2,820	2,730	2,260	2,350	2,710	2,700	2,770	2,950	2,990
Wales	940	880	770	940	1,050	1,060	1,310	1,380	1,380	1,480
EU (excluding UK)	190	420	430	380	450	410	410	460	400	360
Not EU	40	70	70	60	50	60	70	50	90	110

BB.9 Placed applicants to nursing at 5 days after A level results day: providers in the UK

Selected applicant domiciles: difference between cycle and 2017 cycle (at 5 days after A level results day)

Domicile of applicant	2009	2010	2011	2012	2013	2014	2015	2016	2017	2018
England	4%	3%	-13%	-11%	-10%	0%	-2%	6%	0%	-3%
Northern Ireland	-60%	-50%	-58%	-51%	-21%	-15%	-14%	3%	0%	-4%
Scotland	-92%	-4%	-7%	-23%	-20%	-8%	-8%	-6%	0%	1%
Wales	-32%	-36%	-44%	-32%	-24%	-23%	-5%	0%	0%	8%
EU (excluding UK)	-53%	5%	6%	-5%	13%	1%	2%	14%	0%	-12%
Not EU	-54%	-20%	-26%	-33%	-46%	-37%	-20%	-43%	0%	19%

Note: The percentage change is not recorded in the above table for groups with fewer than 10 placed applicants in that cycle or in the 2017 cycle.