

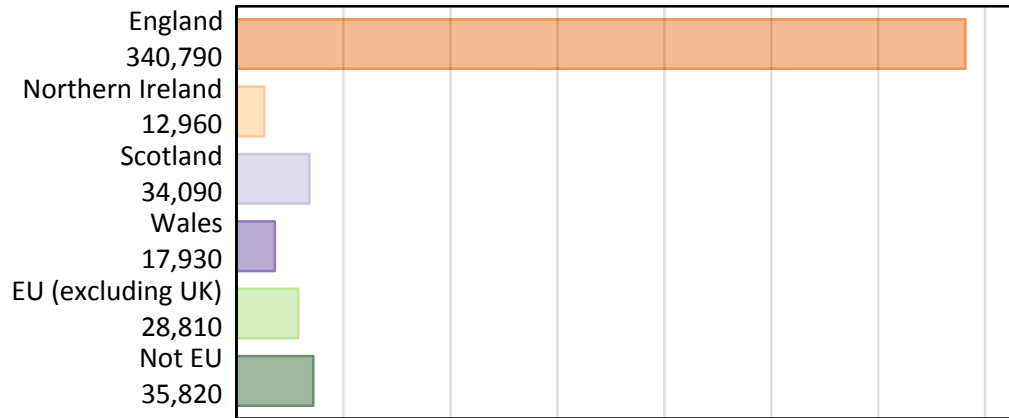
# Daily Clearing Analysis: Country

Analysis at 00:05 on Thursday 23 August 2018 (7 days after A level results day)

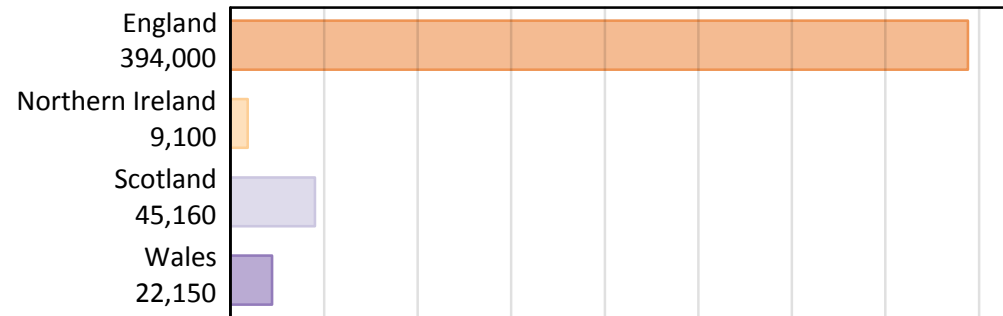
## B.1 Placed applicants by country of provider and domicile, 2018 cycle

Domicile of applicant	Country of provider				
	England	Northern Ireland	Scotland	Wales	UK
England	326,170	310	4,580	9,740	340,790
Northern Ireland	3,720	8,120	980	140	12,960
Scotland	1,450	30	32,580	40	34,090
Wales	7,610	10	140	10,170	17,930
EU (excluding UK)	23,350	380	4,000	1,080	28,810
Not EU	31,700	260	2,890	970	35,820
All	394,000	9,100	45,160	22,150	470,410

### B.2 Placed applicants by domicile group



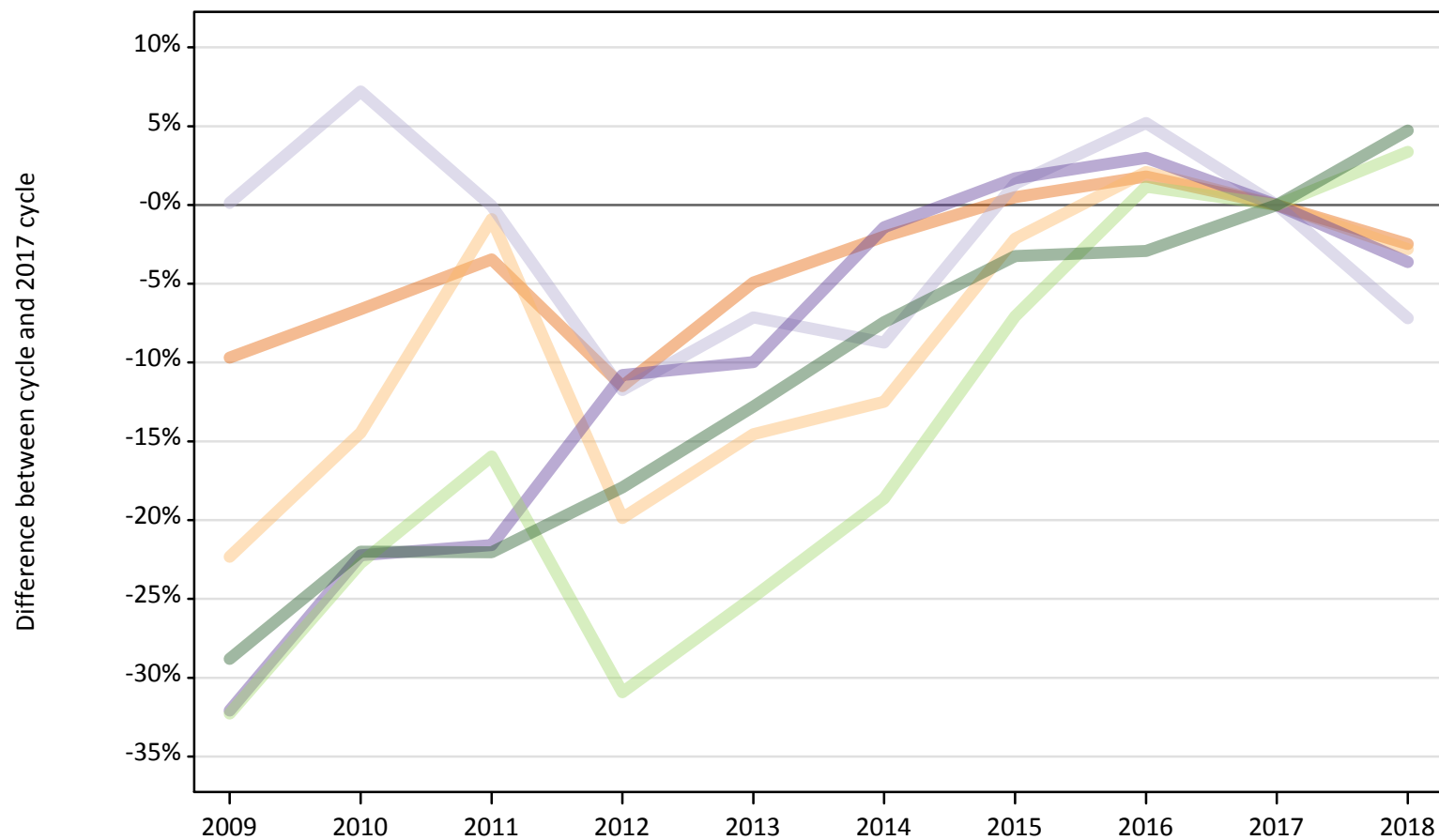
### B.3 Placed applicants by country of provider



### B.4 Placed applicants at 7 days after A level results day: providers in England

Selected applicant domiciles: difference between cycle and 2017 cycle (at 7 days after A level results day)

- England
- Northern Ireland
- Scotland
- Wales
- EU (excluding UK)
- Not EU



Note: The percentage change is not plotted in the above chart for groups with fewer than 30 placed applicants in any one cycle.

### B.5 Placed applicants at 7 days after A level results day: providers in England

Placed applicants by domicile (at 7 days after A level results day)

Domicile of applicant	2009	2010	2011	2012	2013	2014	2015	2016	2017	2018
England	302,030	312,310	322,920	296,020	318,010	327,740	336,120	340,520	334,450	326,170
Northern Ireland	2,970	3,270	3,790	3,060	3,270	3,350	3,740	3,900	3,820	3,720
Scotland	1,560	1,670	1,560	1,370	1,450	1,420	1,580	1,640	1,560	1,450
Wales	5,360	6,140	6,190	7,050	7,110	7,790	8,030	8,130	7,900	7,610
EU (excluding UK)	15,300	17,460	18,990	15,610	16,980	18,390	21,000	22,850	22,590	23,350
Not EU	21,550	23,610	23,590	24,840	26,390	28,010	29,280	29,380	30,270	31,700

### B.6 Placed applicants at 7 days after A level results day: providers in England

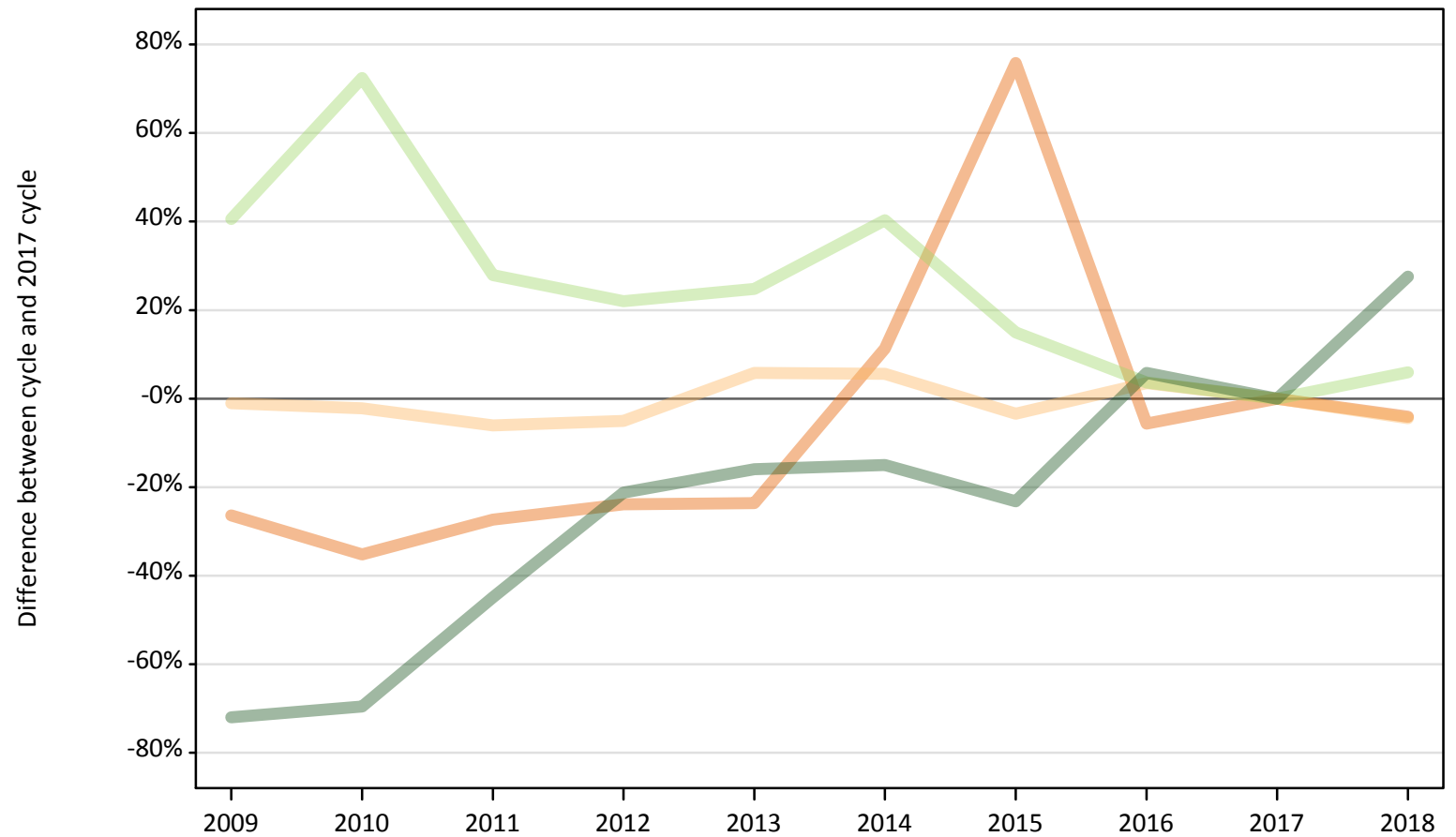
Selected applicant domiciles: difference between cycle and 2017 cycle (at 7 days after A level results day)

Domicile of applicant	2009	2010	2011	2012	2013	2014	2015	2016	2017	2018
England	-10%	-7%	-3%	-11%	-5%	-2%	0%	2%	0%	-2%
Northern Ireland	-22%	-14%	-1%	-20%	-15%	-12%	-2%	2%	0%	-3%
Scotland	0%	7%	-0%	-12%	-7%	-9%	1%	5%	0%	-7%
Wales	-32%	-22%	-22%	-11%	-10%	-1%	2%	3%	0%	-4%
EU (excluding UK)	-32%	-23%	-16%	-31%	-25%	-19%	-7%	1%	0%	3%
Not EU	-29%	-22%	-22%	-18%	-13%	-7%	-3%	-3%	0%	5%

Note: The percentage change is not recorded in the above table for groups with fewer than 10 placed applicants in that cycle or in the 2017 cycle.

**B.7 Placed applicants at 7 days after A level results day: providers in Northern Ireland**  
Selected applicant domiciles: difference between cycle and 2017 cycle (at 7 days after A level results day)

- England
- Northern Ireland
- Scotland
- Wales
- EU (excluding UK)
- Not EU



Note: The percentage change is not plotted in the above chart for groups with fewer than 30 placed applicants in any one cycle.

**B.8 Placed applicants at 7 days after A level results day: providers in Northern Ireland**

Placed applicants by domicile (at 7 days after A level results day)

Domicile of applicant	2009	2010	2011	2012	2013	2014	2015	2016	2017	2018
England	230	210	230	240	240	350	560	300	320	310
Northern Ireland	8,410	8,310	7,980	8,070	8,990	8,970	8,210	8,790	8,500	8,120
Scotland	20	20	20	30	10	20	20	20	30	30
Wales	10	10	10	0	0	10	10	10	10	10
EU (excluding UK)	500	610	450	430	440	500	410	370	360	380
Not EU	60	60	110	160	170	180	160	220	210	260

**B.9 Placed applicants at 7 days after A level results day: providers in Northern Ireland**

Selected applicant domiciles: difference between cycle and 2017 cycle (at 7 days after A level results day)

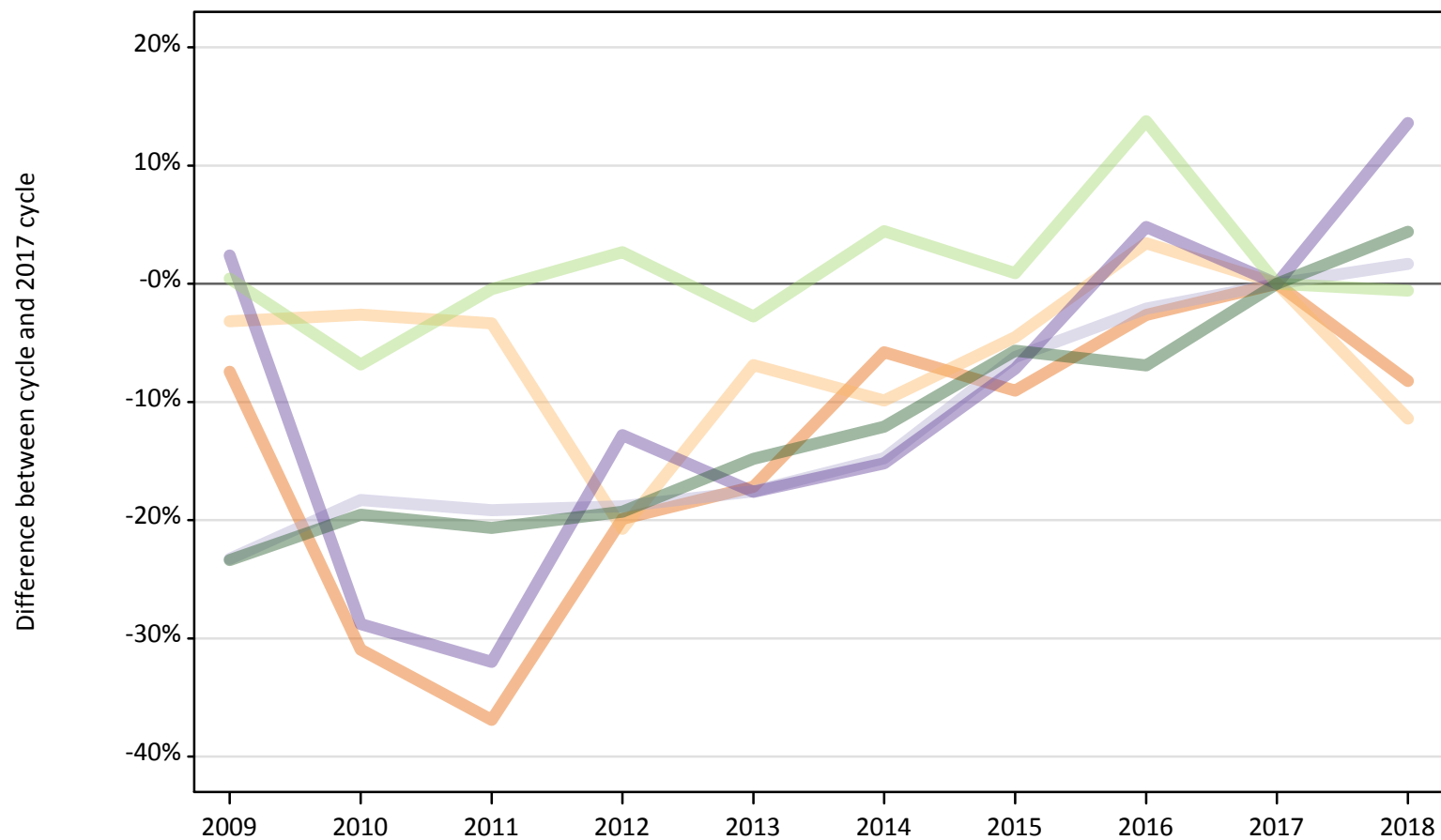
Domicile of applicant	2009	2010	2011	2012	2013	2014	2015	2016	2017	2018
England	-26%	-35%	-27%	-24%	-24%	11%	76%	-6%	0%	-4%
Northern Ireland	-1%	-2%	-6%	-5%	6%	6%	-3%	4%	0%	-4%
Scotland	-48%	-23%	-42%	-13%	-61%	-45%	-39%	-42%	0%	-16%
Wales	-7%	-57%	-50%			-50%	-21%	-29%	0%	-29%
EU (excluding UK)	41%	72%	28%	22%	25%	40%	15%	4%	0%	6%
Not EU	-72%	-70%	-45%	-21%	-16%	-15%	-23%	6%	0%	28%

Note: The percentage change is not recorded in the above table for groups with fewer than 10 placed applicants in that cycle or in the 2017 cycle.

### B.10 Placed applicants at 7 days after A level results day: providers in Scotland

Selected applicant domiciles: difference between cycle and 2017 cycle (at 7 days after A level results day)

- England
- Northern Ireland
- Scotland
- Wales
- EU (excluding UK)
- Not EU



Note: The percentage change is not plotted in the above chart for groups with fewer than 30 placed applicants in any one cycle.

**B.11 Placed applicants at 7 days after A level results day: providers in Scotland**

Placed applicants by domicile (at 7 days after A level results day)

Domicile of applicant	2009	2010	2011	2012	2013	2014	2015	2016	2017	2018
England	4,620	3,440	3,150	3,990	4,130	4,700	4,540	4,850	4,990	4,580
Northern Ireland	1,070	1,080	1,070	880	1,030	1,000	1,050	1,140	1,100	980
Scotland	24,580	26,170	25,900	26,010	26,410	27,310	30,060	31,370	32,040	32,580
Wales	130	90	90	110	100	110	120	130	130	140
EU (excluding UK)	4,040	3,750	4,000	4,130	3,910	4,200	4,060	4,570	4,020	4,000
Not EU	2,120	2,230	2,200	2,230	2,360	2,430	2,610	2,580	2,770	2,890

**B.12 Placed applicants at 7 days after A level results day: providers in Scotland**

Selected applicant domiciles: difference between cycle and 2017 cycle (at 7 days after A level results day)

Domicile of applicant	2009	2010	2011	2012	2013	2014	2015	2016	2017	2018
England	-7%	-31%	-37%	-20%	-17%	-6%	-9%	-3%	0%	-8%
Northern Ireland	-3%	-3%	-3%	-21%	-7%	-10%	-5%	3%	0%	-11%
Scotland	-23%	-18%	-19%	-19%	-18%	-15%	-6%	-2%	0%	2%
Wales	2%	-29%	-32%	-13%	-18%	-15%	-7%	5%	0%	14%
EU (excluding UK)	0%	-7%	-0%	3%	-3%	4%	1%	14%	0%	-1%
Not EU	-23%	-20%	-21%	-19%	-15%	-12%	-6%	-7%	0%	4%

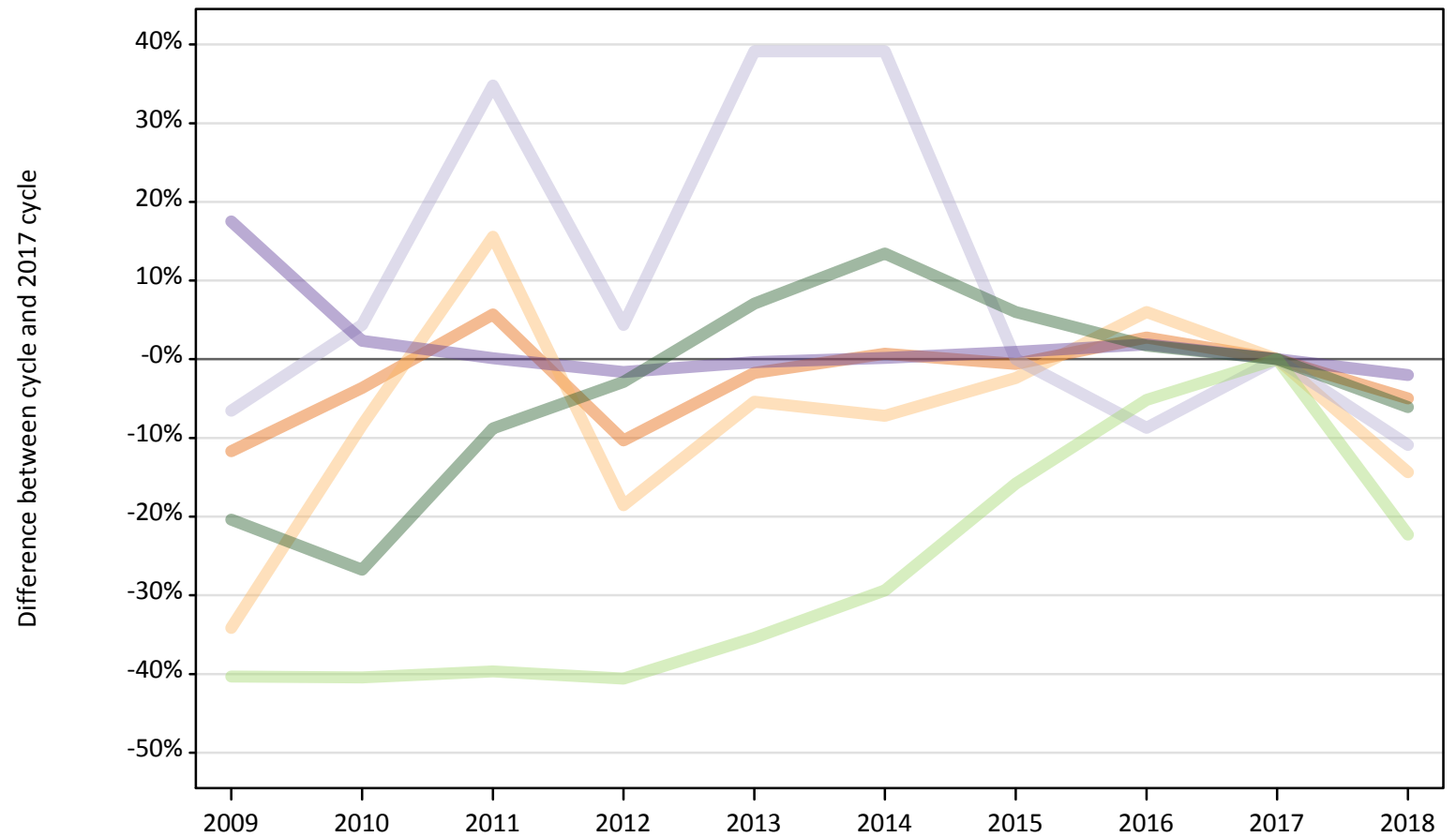
Note: The percentage change is not recorded in the above table for groups with fewer than 10 placed applicants in that cycle or in the 2017 cycle.



### B.13 Placed applicants at 7 days after A level results day: providers in Wales

Selected applicant domiciles: difference between cycle and 2017 cycle (at 7 days after A level results day)

- England
- Northern Ireland
- Scotland
- Wales
- EU (excluding UK)
- Not EU



Note: The percentage change is not plotted in the above chart for groups with fewer than 30 placed applicants in any one cycle.

**B.14 Placed applicants at 7 days after A level results day: providers in Wales**

Placed applicants by domicile (at 7 days after A level results day)

Domicile of applicant	2009	2010	2011	2012	2013	2014	2015	2016	2017	2018
England	9,060	9,880	10,840	9,200	10,070	10,330	10,190	10,530	10,250	9,740
Northern Ireland	110	150	190	140	160	160	160	180	170	140
Scotland	40	50	60	50	60	60	50	40	50	40
Wales	12,190	10,620	10,390	10,210	10,340	10,390	10,470	10,570	10,370	10,170
EU (excluding UK)	830	830	840	830	900	980	1,170	1,320	1,390	1,080
Not EU	820	760	940	1,010	1,110	1,170	1,100	1,050	1,040	970

**B.15 Placed applicants at 7 days after A level results day: providers in Wales**

Selected applicant domiciles: difference between cycle and 2017 cycle (at 7 days after A level results day)

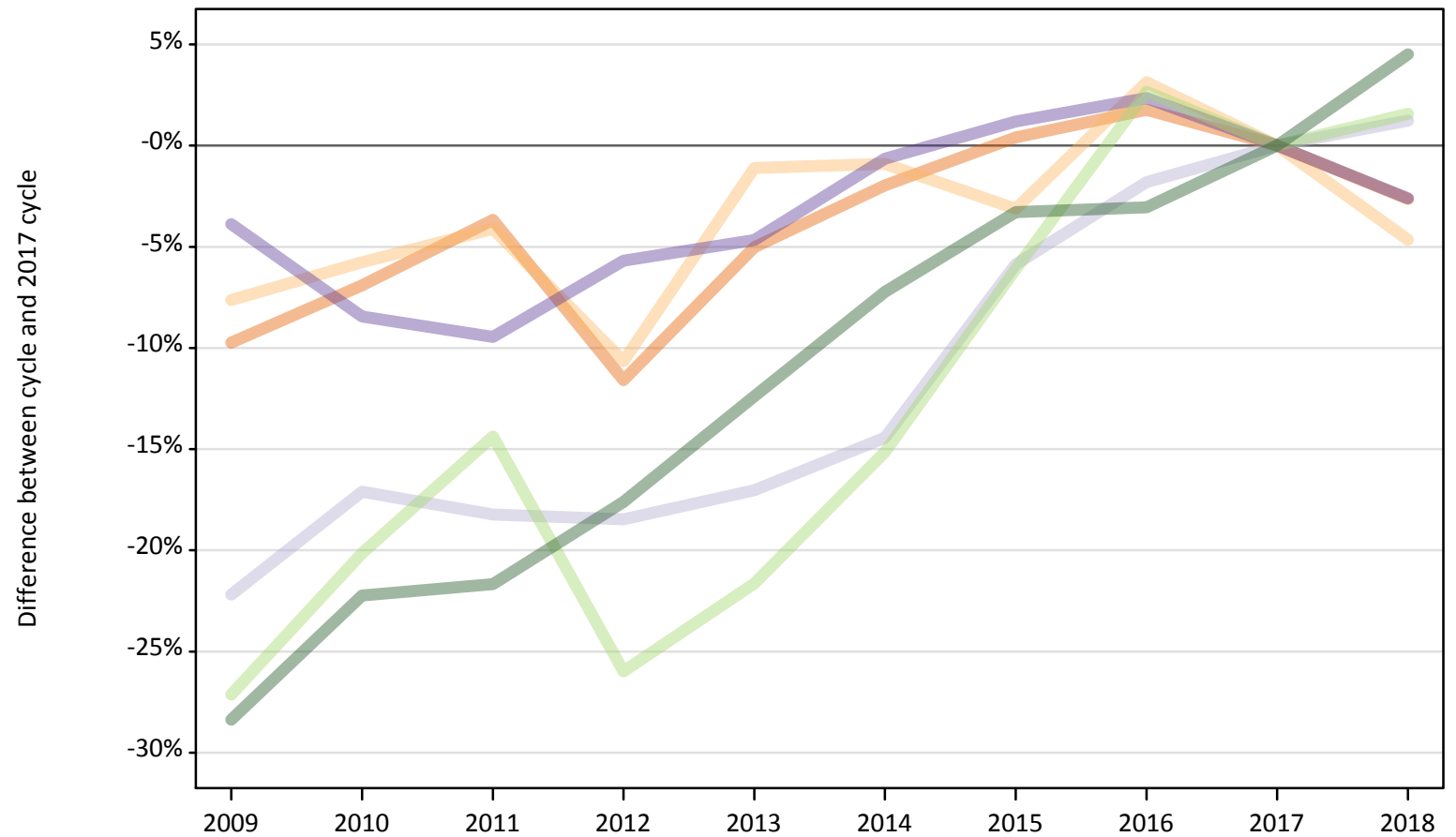
Domicile of applicant	2009	2010	2011	2012	2013	2014	2015	2016	2017	2018
England	-12%	-4%	6%	-10%	-2%	1%	-1%	3%	0%	-5%
Northern Ireland	-34%	-8%	16%	-19%	-5%	-7%	-2%	6%	0%	-14%
Scotland	-7%	4%	35%	4%	39%	39%	0%	-9%	0%	-11%
Wales	18%	2%	0%	-2%	-0%	0%	1%	2%	0%	-2%
EU (excluding UK)	-40%	-40%	-40%	-41%	-35%	-29%	-16%	-5%	0%	-22%
Not EU	-20%	-27%	-9%	-3%	7%	13%	6%	2%	0%	-6%

Note: The percentage change is not recorded in the above table for groups with fewer than 10 placed applicants in that cycle or in the 2017 cycle.

### B.16 Placed applicants at 7 days after A level results day: providers in the UK

Selected applicant domiciles: difference between cycle and 2017 cycle (at 7 days after A level results day)

- England
- Northern Ireland
- Scotland
- Wales
- EU (excluding UK)
- Not EU



Note: The percentage change is not plotted in the above chart for groups with fewer than 30 placed applicants in any one cycle.

**B.17 Placed applicants at 7 days after A level results day: providers in the UK**

Placed applicants by domicile (at 7 days after A level results day)

Domicile of applicant	2009	2010	2011	2012	2013	2014	2015	2016	2017	2018
England	315,940	325,830	337,140	309,450	332,450	343,110	351,400	356,210	350,000	340,790
Northern Ireland	12,550	12,810	13,030	12,140	13,440	13,470	13,160	14,020	13,590	12,960
Scotland	26,200	27,910	27,540	27,460	27,940	28,810	31,700	33,060	33,670	34,090
Wales	17,700	16,860	16,670	17,360	17,550	18,290	18,630	18,840	18,410	17,930
EU (excluding UK)	20,670	22,650	24,280	20,990	22,230	24,070	26,630	29,120	28,360	28,810
Not EU	24,550	26,660	26,850	28,240	30,030	31,800	33,150	33,230	34,280	35,820

**B.18 Placed applicants at 7 days after A level results day: providers in the UK**

Selected applicant domiciles: difference between cycle and 2017 cycle (at 7 days after A level results day)

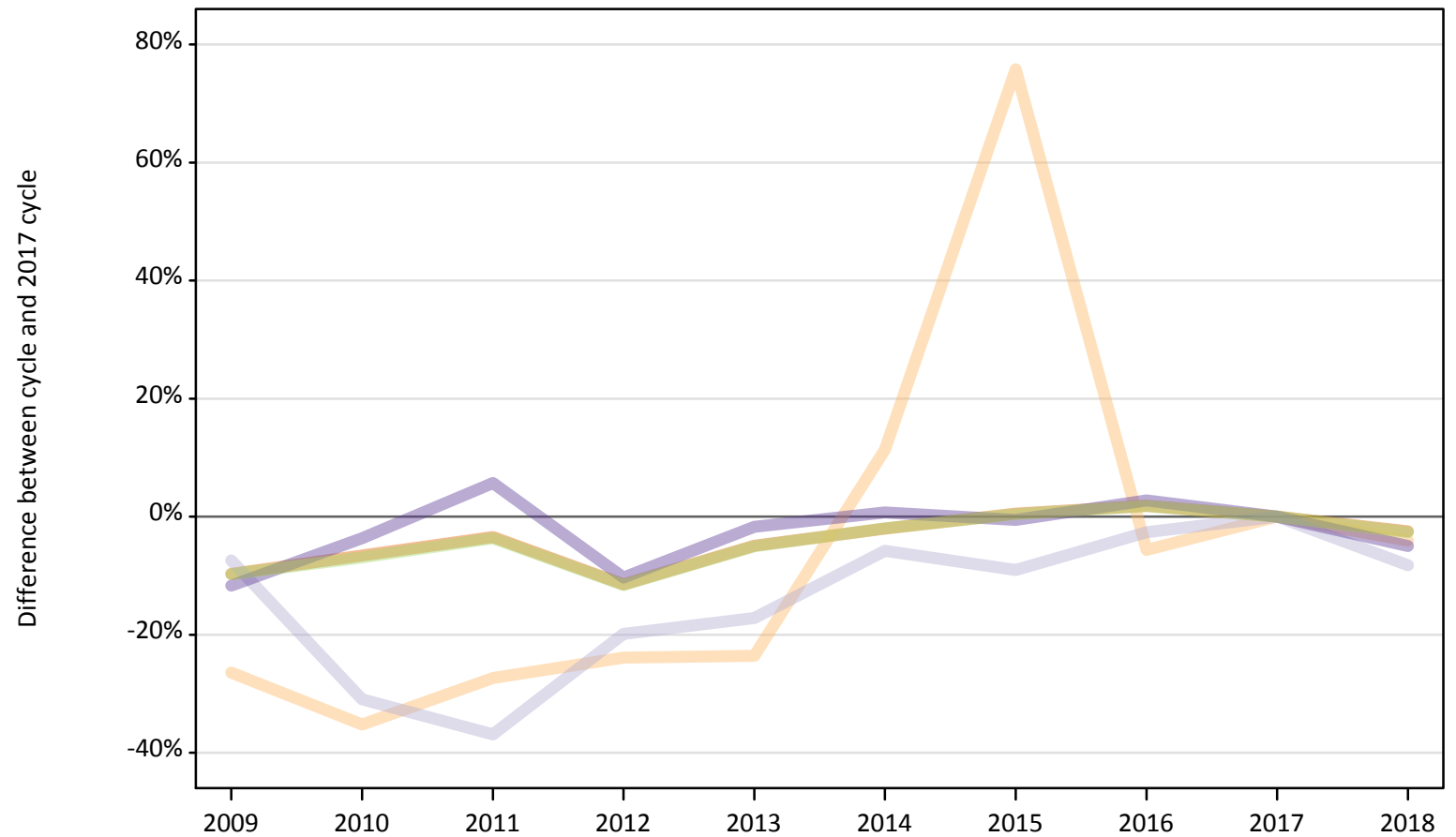
Domicile of applicant	2009	2010	2011	2012	2013	2014	2015	2016	2017	2018
England	-10%	-7%	-4%	-12%	-5%	-2%	0%	2%	0%	-3%
Northern Ireland	-8%	-6%	-4%	-11%	-1%	-1%	-3%	3%	0%	-5%
Scotland	-22%	-17%	-18%	-18%	-17%	-14%	-6%	-2%	0%	1%
Wales	-4%	-8%	-9%	-6%	-5%	-1%	1%	2%	0%	-3%
EU (excluding UK)	-27%	-20%	-14%	-26%	-22%	-15%	-6%	3%	0%	2%
Not EU	-28%	-22%	-22%	-18%	-12%	-7%	-3%	-3%	0%	5%

Note: The percentage change is not recorded in the above table for groups with fewer than 10 placed applicants in that cycle or in the 2017 cycle.

### B.19 Placed applicants at 7 days after A level results day: domiciled in England

Selected provider countries: difference between cycle and 2017 cycle (at 7 days after A level results day)

- England
- Northern Ireland
- Scotland
- Wales
- UK



Note: The percentage change is not plotted in the above chart for groups with fewer than 30 placed applicants in any one cycle.

## B.20 Placed applicants at 7 days after A level results day: domiciled in England

Placed applicants by provider country (at 7 days after A level results day)

Country of provider	2009	2010	2011	2012	2013	2014	2015	2016	2017	2018
England	302,030	312,310	322,920	296,020	318,010	327,740	336,120	340,520	334,450	326,170
Northern Ireland	230	210	230	240	240	350	560	300	320	310
Scotland	4,620	3,440	3,150	3,990	4,130	4,700	4,540	4,850	4,990	4,580
Wales	9,060	9,880	10,840	9,200	10,070	10,330	10,190	10,530	10,250	9,740
UK	315,940	325,830	337,140	309,450	332,450	343,110	351,400	356,210	350,000	340,790

## B.21 Placed applicants at 7 days after A level results day: domiciled in England

Selected provider countries: difference between cycle and 2017 cycle (at 7 days after A level results day)

Country of provider	2009	2010	2011	2012	2013	2014	2015	2016	2017	2018
England	-10%	-7%	-3%	-11%	-5%	-2%	0%	2%	0%	-2%
Northern Ireland	-26%	-35%	-27%	-24%	-24%	11%	76%	-6%	0%	-4%
Scotland	-7%	-31%	-37%	-20%	-17%	-6%	-9%	-3%	0%	-8%
Wales	-12%	-4%	6%	-10%	-2%	1%	-1%	3%	0%	-5%
UK	-10%	-7%	-4%	-12%	-5%	-2%	0%	2%	0%	-3%

Note: The percentage change is not recorded in the above table for groups with fewer than 10 placed applicants in that cycle or in the 2017 cycle.

**B.22 Placed applicants at 7 days after A level results day: domiciled in Northern Ireland**  
Selected provider countries: difference between cycle and 2017 cycle (at 7 days after A level results day)

- England
- Northern Ireland
- Scotland
- Wales
- UK



Note: The percentage change is not plotted in the above chart for groups with fewer than 30 placed applicants in any one cycle.

### B.23 Placed applicants at 7 days after A level results day: domiciled in Northern Ireland

Placed applicants by provider country (at 7 days after A level results day)

Country of provider	2009	2010	2011	2012	2013	2014	2015	2016	2017	2018
England	2,970	3,270	3,790	3,060	3,270	3,350	3,740	3,900	3,820	3,720
Northern Ireland	8,410	8,310	7,980	8,070	8,990	8,970	8,210	8,790	8,500	8,120
Scotland	1,070	1,080	1,070	880	1,030	1,000	1,050	1,140	1,100	980
Wales	110	150	190	140	160	160	160	180	170	140
UK	12,550	12,810	13,030	12,140	13,440	13,470	13,160	14,020	13,590	12,960

### B.24 Placed applicants at 7 days after A level results day: domiciled in Northern Ireland

Selected provider countries: difference between cycle and 2017 cycle (at 7 days after A level results day)

Country of provider	2009	2010	2011	2012	2013	2014	2015	2016	2017	2018
England	-22%	-14%	-1%	-20%	-15%	-12%	-2%	2%	0%	-3%
Northern Ireland	-1%	-2%	-6%	-5%	6%	6%	-3%	4%	0%	-4%
Scotland	-3%	-3%	-3%	-21%	-7%	-10%	-5%	3%	0%	-11%
Wales	-34%	-8%	16%	-19%	-5%	-7%	-2%	6%	0%	-14%
UK	-8%	-6%	-4%	-11%	-1%	-1%	-3%	3%	0%	-5%

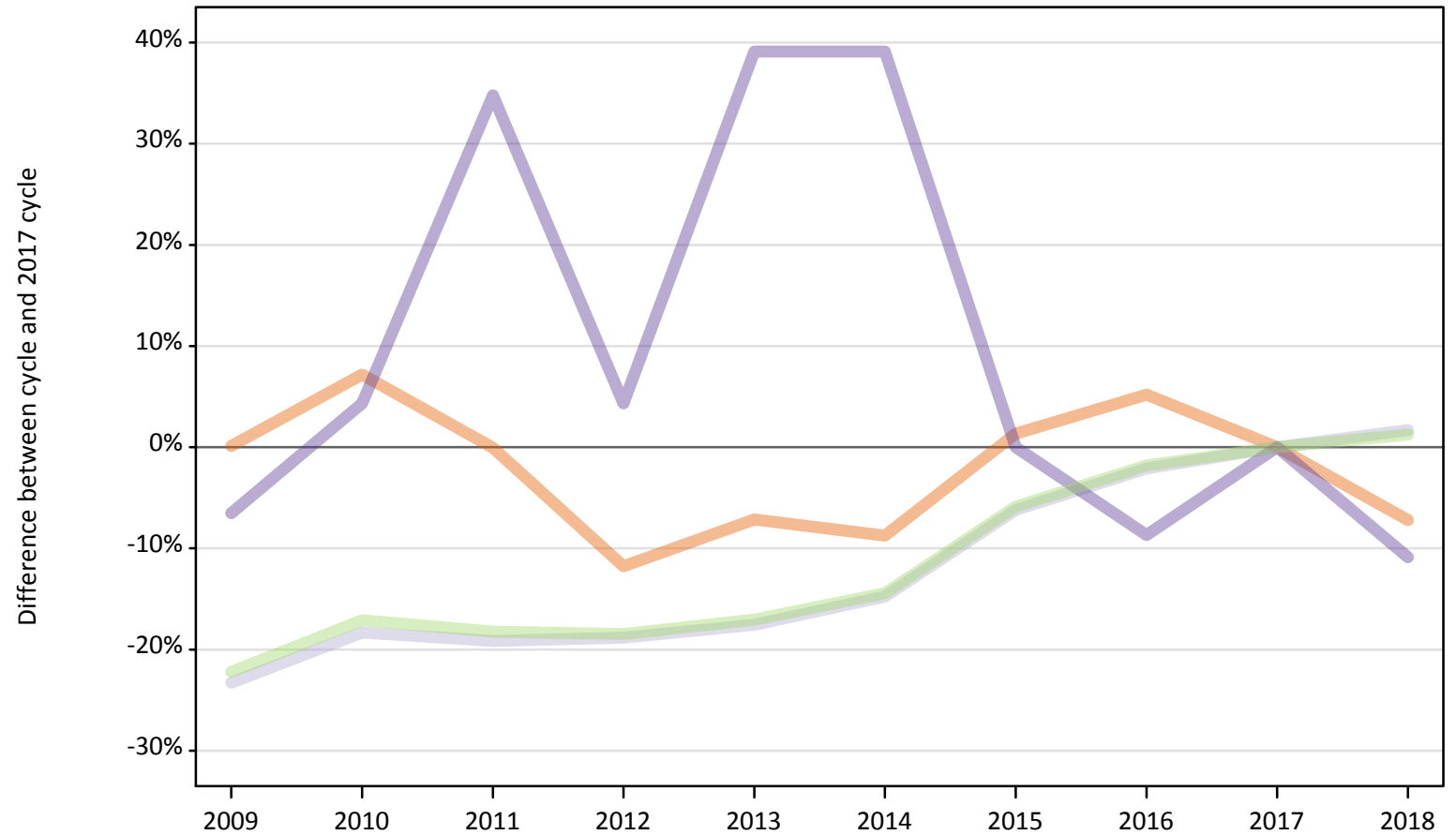
Note: The percentage change is not recorded in the above table for groups with fewer than 10 placed applicants in that cycle or in the 2017 cycle.



### B.25 Placed applicants at 7 days after A level results day: domiciled in Scotland

Selected provider countries: difference between cycle and 2017 cycle (at 7 days after A level results day)

- England
- Northern Ireland
- Scotland
- Wales
- UK



Note: The percentage change is not plotted in the above chart for groups with fewer than 30 placed applicants in any one cycle.

**B.26 Placed applicants at 7 days after A level results day: domiciled in Scotland**

Placed applicants by provider country (at 7 days after A level results day)

Country of provider	2009	2010	2011	2012	2013	2014	2015	2016	2017	2018
England	1,560	1,670	1,560	1,370	1,450	1,420	1,580	1,640	1,560	1,450
Northern Ireland	20	20	20	30	10	20	20	20	30	30
Scotland	24,580	26,170	25,900	26,010	26,410	27,310	30,060	31,370	32,040	32,580
Wales	40	50	60	50	60	60	50	40	50	40
UK	26,200	27,910	27,540	27,460	27,940	28,810	31,700	33,060	33,670	34,090

**B.27 Placed applicants at 7 days after A level results day: domiciled in Scotland**

Selected provider countries: difference between cycle and 2017 cycle (at 7 days after A level results day)

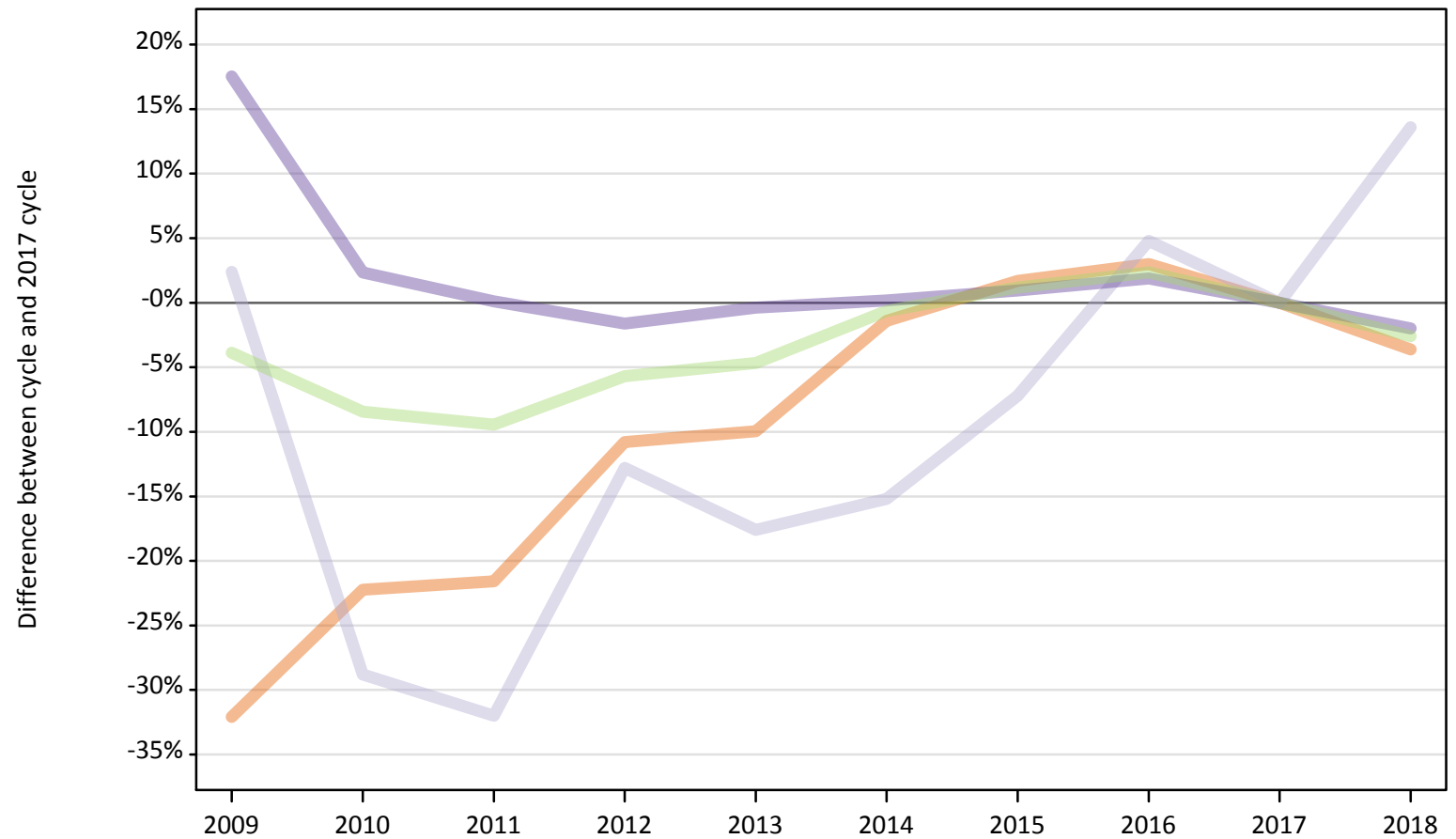
Country of provider	2009	2010	2011	2012	2013	2014	2015	2016	2017	2018
England	0%	7%	-0%	-12%	-7%	-9%	1%	5%	0%	-7%
Northern Ireland	-48%	-23%	-42%	-13%	-61%	-45%	-39%	-42%	0%	-16%
Scotland	-23%	-18%	-19%	-19%	-18%	-15%	-6%	-2%	0%	2%
Wales	-7%	4%	35%	4%	39%	39%	0%	-9%	0%	-11%
UK	-22%	-17%	-18%	-18%	-17%	-14%	-6%	-2%	0%	1%

Note: The percentage change is not recorded in the above table for groups with fewer than 10 placed applicants in that cycle or in the 2017 cycle.

### B.28 Placed applicants at 7 days after A level results day: domiciled in Wales

Selected provider countries: difference between cycle and 2017 cycle (at 7 days after A level results day)

- England
- Northern Ireland
- Scotland
- Wales
- UK



Note: The percentage change is not plotted in the above chart for groups with fewer than 30 placed applicants in any one cycle.

**B.29 Placed applicants at 7 days after A level results day: domiciled in Wales**

Placed applicants by provider country (at 7 days after A level results day)

Country of provider	2009	2010	2011	2012	2013	2014	2015	2016	2017	2018
England	5,360	6,140	6,190	7,050	7,110	7,790	8,030	8,130	7,900	7,610
Northern Ireland	10	10	10	0	0	10	10	10	10	10
Scotland	130	90	90	110	100	110	120	130	130	140
Wales	12,190	10,620	10,390	10,210	10,340	10,390	10,470	10,570	10,370	10,170
UK	17,700	16,860	16,670	17,360	17,550	18,290	18,630	18,840	18,410	17,930

**B.30 Placed applicants at 7 days after A level results day: domiciled in Wales**

Selected provider countries: difference between cycle and 2017 cycle (at 7 days after A level results day)

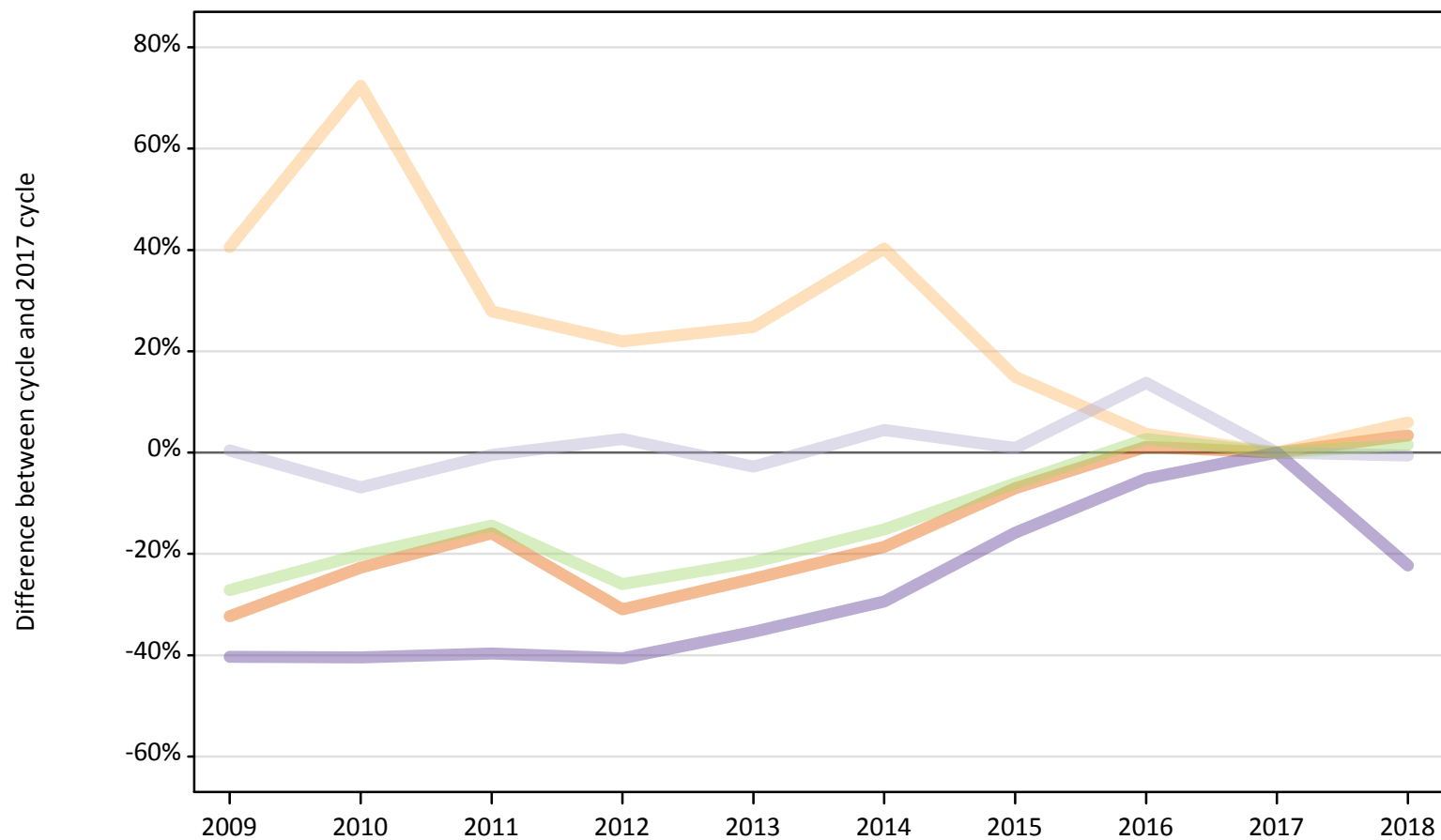
Country of provider	2009	2010	2011	2012	2013	2014	2015	2016	2017	2018
England	-32%	-22%	-22%	-11%	-10%	-1%	2%	3%	0%	-4%
Northern Ireland	-7%	-57%	-50%			-50%	-21%	-29%	0%	-29%
Scotland	2%	-29%	-32%	-13%	-18%	-15%	-7%	5%	0%	14%
Wales	18%	2%	0%	-2%	-0%	0%	1%	2%	0%	-2%
UK	-4%	-8%	-9%	-6%	-5%	-1%	1%	2%	0%	-3%

Note: The percentage change is not recorded in the above table for groups with fewer than 10 placed applicants in that cycle or in the 2017 cycle.

### B.31 Placed applicants at 7 days after A level results day: domiciled in EU (excluding UK)

Selected provider countries: difference between cycle and 2017 cycle (at 7 days after A level results day)

- England
- Northern Ireland
- Scotland
- Wales
- UK



Note: The percentage change is not plotted in the above chart for groups with fewer than 30 placed applicants in any one cycle.

### B.32 Placed applicants at 7 days after A level results day: domiciled in EU (excluding UK)

Placed applicants by provider country (at 7 days after A level results day)

Country of provider	2009	2010	2011	2012	2013	2014	2015	2016	2017	2018
England	15,300	17,460	18,990	15,610	16,980	18,390	21,000	22,850	22,590	23,350
Northern Ireland	500	610	450	430	440	500	410	370	360	380
Scotland	4,040	3,750	4,000	4,130	3,910	4,200	4,060	4,570	4,020	4,000
Wales	830	830	840	830	900	980	1,170	1,320	1,390	1,080
UK	20,670	22,650	24,280	20,990	22,230	24,070	26,630	29,120	28,360	28,810

### B.33 Placed applicants at 7 days after A level results day: domiciled in EU (excluding UK)

Selected provider countries: difference between cycle and 2017 cycle (at 7 days after A level results day)

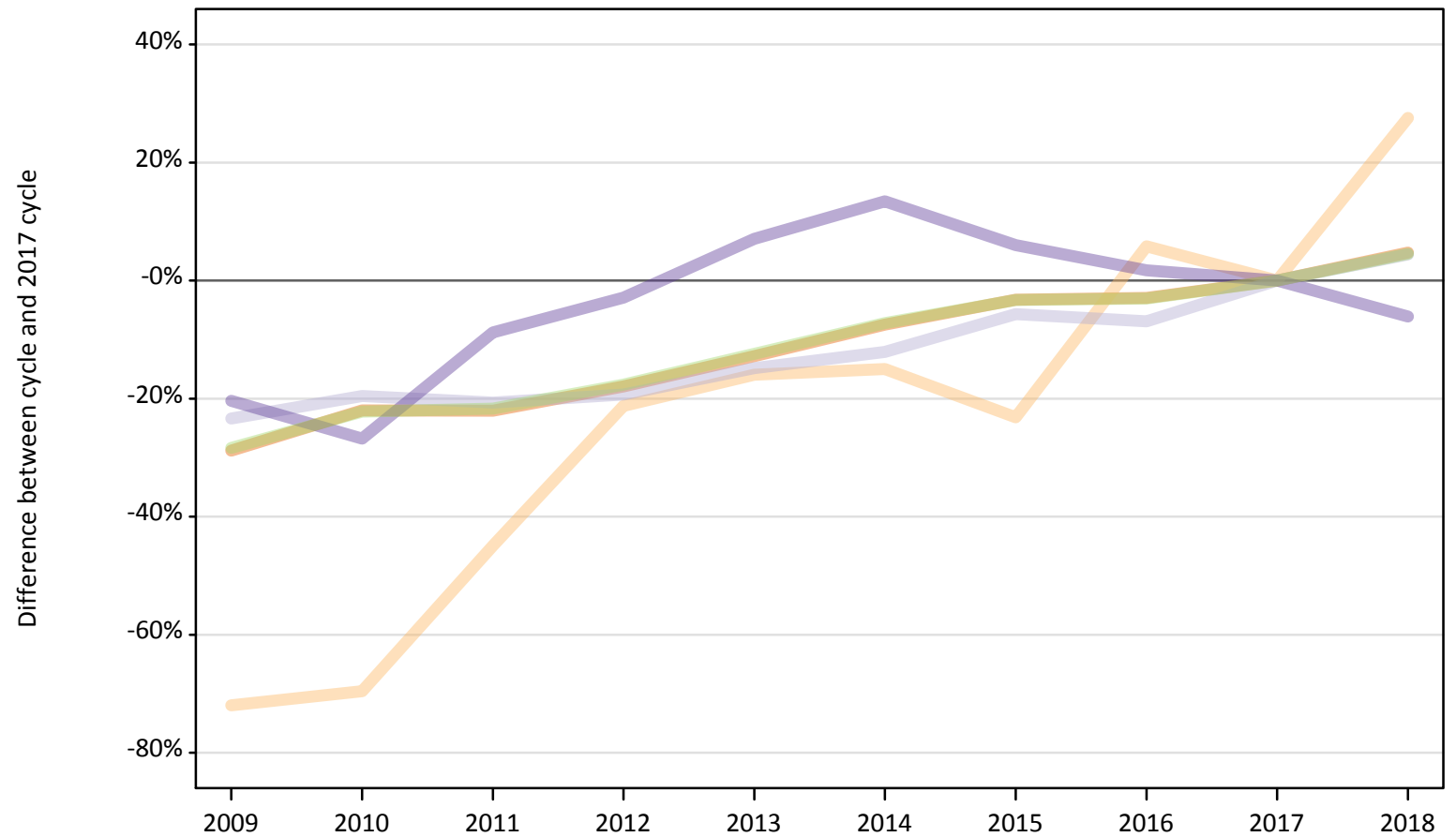
Country of provider	2009	2010	2011	2012	2013	2014	2015	2016	2017	2018
England	-32%	-23%	-16%	-31%	-25%	-19%	-7%	1%	0%	3%
Northern Ireland	41%	72%	28%	22%	25%	40%	15%	4%	0%	6%
Scotland	0%	-7%	-0%	3%	-3%	4%	1%	14%	0%	-1%
Wales	-40%	-40%	-40%	-41%	-35%	-29%	-16%	-5%	0%	-22%
UK	-27%	-20%	-14%	-26%	-22%	-15%	-6%	3%	0%	2%

Note: The percentage change is not recorded in the above table for groups with fewer than 10 placed applicants in that cycle or in the 2017 cycle.

### B.34 Placed applicants at 7 days after A level results day: domiciled in Not EU

Selected provider countries: difference between cycle and 2017 cycle (at 7 days after A level results day)

- England
- Northern Ireland
- Scotland
- Wales
- UK



Note: The percentage change is not plotted in the above chart for groups with fewer than 30 placed applicants in any one cycle.

### B.35 Placed applicants at 7 days after A level results day: domiciled in Not EU

Placed applicants by provider country (at 7 days after A level results day)

Country of provider	2009	2010	2011	2012	2013	2014	2015	2016	2017	2018
England	21,550	23,610	23,590	24,840	26,390	28,010	29,280	29,380	30,270	31,700
Northern Ireland	60	60	110	160	170	180	160	220	210	260
Scotland	2,120	2,230	2,200	2,230	2,360	2,430	2,610	2,580	2,770	2,890
Wales	820	760	940	1,010	1,110	1,170	1,100	1,050	1,040	970
UK	24,550	26,660	26,850	28,240	30,030	31,800	33,150	33,230	34,280	35,820

### B.36 Placed applicants at 7 days after A level results day: domiciled in Not EU

Selected provider countries: difference between cycle and 2017 cycle (at 7 days after A level results day)

Country of provider	2009	2010	2011	2012	2013	2014	2015	2016	2017	2018
England	-29%	-22%	-22%	-18%	-13%	-7%	-3%	-3%	0%	5%
Northern Ireland	-72%	-70%	-45%	-21%	-16%	-15%	-23%	6%	0%	28%
Scotland	-23%	-20%	-21%	-19%	-15%	-12%	-6%	-7%	0%	4%
Wales	-20%	-27%	-9%	-3%	7%	13%	6%	2%	0%	-6%
UK	-28%	-22%	-22%	-18%	-12%	-7%	-3%	-3%	0%	5%

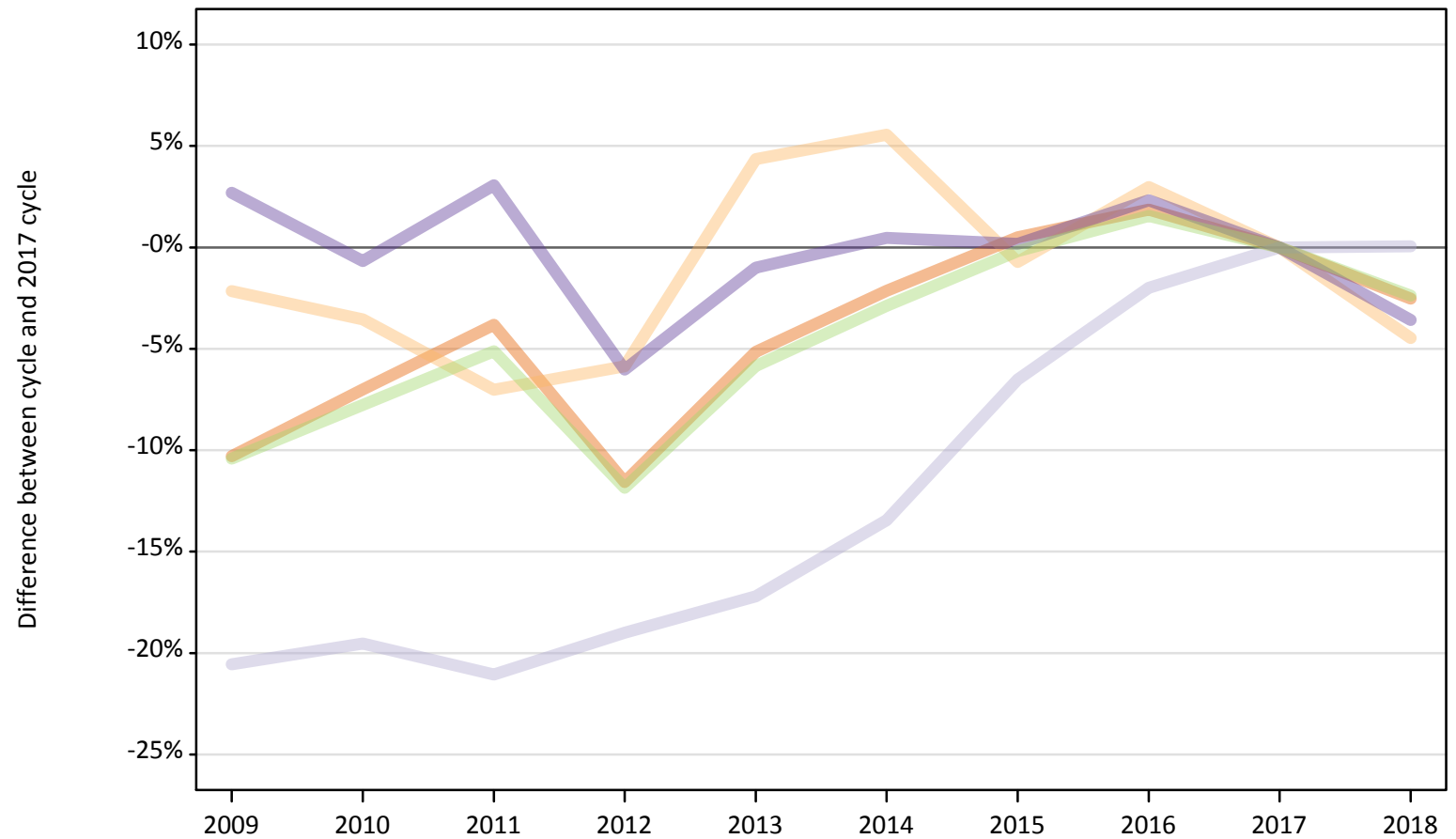
Note: The percentage change is not recorded in the above table for groups with fewer than 10 placed applicants in that cycle or in the 2017 cycle.



### B.37 Placed applicants at 7 days after A level results day: domiciled in UK

Selected provider countries: difference between cycle and 2017 cycle (at 7 days after A level results day)

- England
- Northern Ireland
- Scotland
- Wales
- UK



Note: The percentage change is not plotted in the above chart for groups with fewer than 30 placed applicants in any one cycle.

**B.38 Placed applicants at 7 days after A level results day: domiciled in UK**

Placed applicants by provider country (at 7 days after A level results day)

Country of provider	2009	2010	2011	2012	2013	2014	2015	2016	2017	2018
England	311,920	323,390	334,460	307,500	329,830	340,290	349,470	354,190	347,720	338,940
Northern Ireland	8,670	8,550	8,240	8,340	9,250	9,350	8,800	9,120	8,860	8,460
Scotland	30,390	30,780	30,200	30,980	31,670	33,110	35,760	37,490	38,250	38,270
Wales	21,400	20,700	21,480	19,590	20,630	20,940	20,870	21,320	20,840	20,090
UK	372,390	383,410	394,370	366,410	391,380	403,690	414,900	422,130	415,680	405,770

**B.39 Placed applicants at 7 days after A level results day: domiciled in UK**

Selected provider countries: difference between cycle and 2017 cycle (at 7 days after A level results day)

Country of provider	2009	2010	2011	2012	2013	2014	2015	2016	2017	2018
England	-10%	-7%	-4%	-12%	-5%	-2%	1%	2%	0%	-3%
Northern Ireland	-2%	-4%	-7%	-6%	4%	6%	-1%	3%	0%	-4%
Scotland	-21%	-20%	-21%	-19%	-17%	-13%	-7%	-2%	0%	0%
Wales	3%	-1%	3%	-6%	-1%	0%	0%	2%	0%	-4%
UK	-10%	-8%	-5%	-12%	-6%	-3%	-0%	2%	0%	-2%

Note: The percentage change is not recorded in the above table for groups with fewer than 10 placed applicants in that cycle or in the 2017 cycle.