

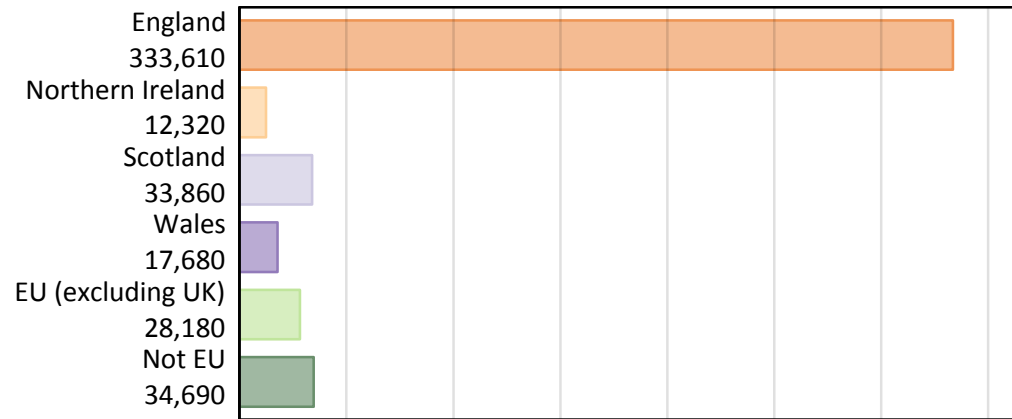
Daily Clearing Analysis: Country

Analysis at 00:05 on Tuesday 21 August 2018 (5 days after A level results day)

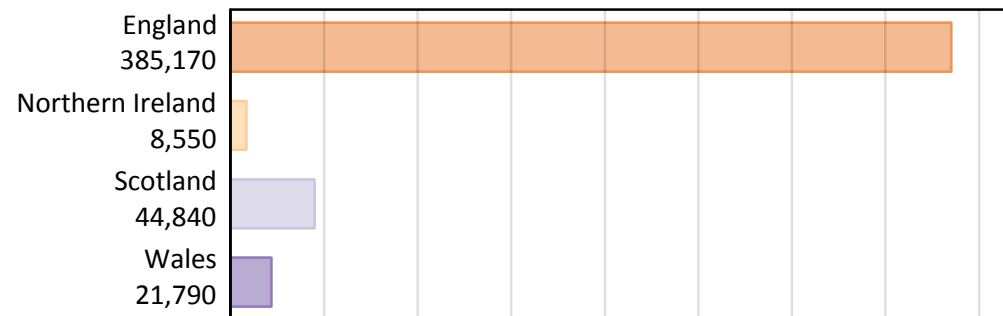
B.1 Placed applicants by country of provider and domicile, 2018 cycle

Domicile of applicant	Country of provider				
	England	Northern Ireland	Scotland	Wales	UK
England	319,160	290	4,550	9,610	333,610
Northern Ireland	3,610	7,610	950	140	12,320
Scotland	1,430	30	32,370	40	33,860
Wales	7,530	10	140	10,000	17,680
EU (excluding UK)	22,800	360	3,970	1,060	28,180
Not EU	30,640	260	2,860	940	34,690
All	385,170	8,550	44,840	21,790	460,340

B.2 Placed applicants by domicile group



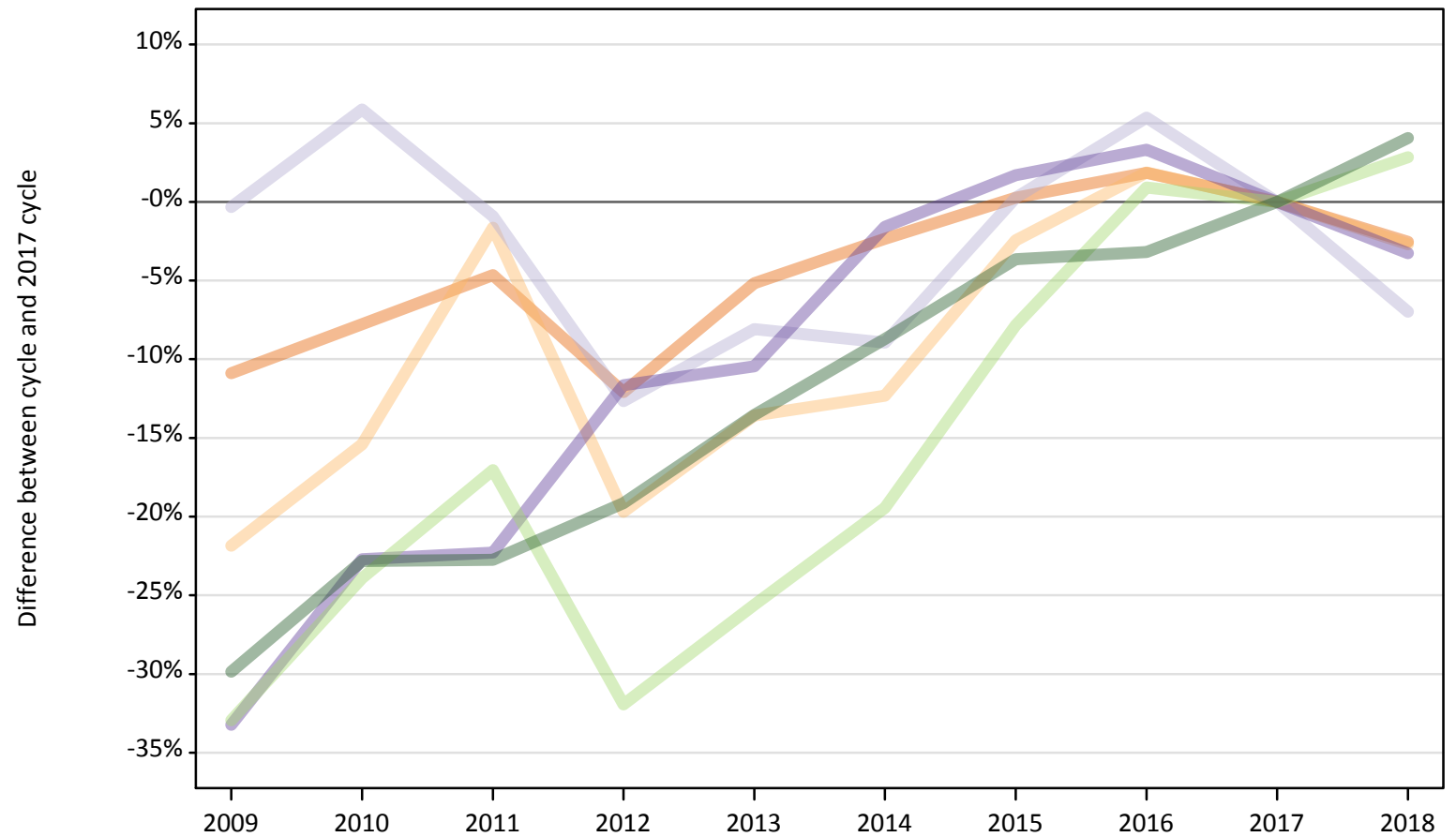
B.3 Placed applicants by country of provider



B.4 Placed applicants at 5 days after A level results day: providers in England

Selected applicant domiciles: difference between cycle and 2017 cycle (at 5 days after A level results day)

- England
- Northern Ireland
- Scotland
- Wales
- EU (excluding UK)
- Not EU



Note: The percentage change is not plotted in the above chart for groups with fewer than 30 placed applicants in any one cycle.

B.5 Placed applicants at 5 days after A level results day: providers in England

Placed applicants by domicile (at 5 days after A level results day)

Domicile of applicant	2009	2010	2011	2012	2013	2014	2015	2016	2017	2018
England	291,780	302,060	312,210	287,850	310,520	319,760	328,330	333,520	327,440	319,160
Northern Ireland	2,900	3,140	3,650	2,980	3,210	3,260	3,620	3,780	3,710	3,610
Scotland	1,530	1,620	1,520	1,340	1,410	1,400	1,540	1,610	1,530	1,430
Wales	5,200	6,020	6,050	6,880	6,970	7,660	7,920	8,050	7,790	7,530
EU (excluding UK)	14,870	16,870	18,390	15,090	16,490	17,860	20,430	22,370	22,170	22,800
Not EU	20,660	22,730	22,750	23,810	25,460	26,880	28,370	28,510	29,450	30,640

B.6 Placed applicants at 5 days after A level results day: providers in England

Selected applicant domiciles: difference between cycle and 2017 cycle (at 5 days after A level results day)

Domicile of applicant	2009	2010	2011	2012	2013	2014	2015	2016	2017	2018
England	-11%	-8%	-5%	-12%	-5%	-2%	0%	2%	0%	-3%
Northern Ireland	-22%	-15%	-2%	-20%	-14%	-12%	-2%	2%	0%	-3%
Scotland	-0%	6%	-1%	-13%	-8%	-9%	0%	5%	0%	-7%
Wales	-33%	-23%	-22%	-12%	-10%	-2%	2%	3%	0%	-3%
EU (excluding UK)	-33%	-24%	-17%	-32%	-26%	-19%	-8%	1%	0%	3%
Not EU	-30%	-23%	-23%	-19%	-14%	-9%	-4%	-3%	0%	4%

Note: The percentage change is not recorded in the above table for groups with fewer than 10 placed applicants in that cycle or in the 2017 cycle.

B.7 Placed applicants at 5 days after A level results day: providers in Northern Ireland
Selected applicant domiciles: difference between cycle and 2017 cycle (at 5 days after A level results day)

- England
- Northern Ireland
- Scotland
- Wales
- EU (excluding UK)
- Not EU



Note: The percentage change is not plotted in the above chart for groups with fewer than 30 placed applicants in any one cycle.

B.8 Placed applicants at 5 days after A level results day: providers in Northern Ireland

Placed applicants by domicile (at 5 days after A level results day)

Domicile of applicant	2009	2010	2011	2012	2013	2014	2015	2016	2017	2018
England	210	190	220	230	240	340	550	290	300	290
Northern Ireland	7,830	7,850	7,610	7,610	8,620	8,520	7,850	8,400	8,100	7,610
Scotland	20	20	20	30	10	20	20	20	30	30
Wales	10	10	10	0	0	10	10	10	10	10
EU (excluding UK)	460	590	440	410	450	490	390	350	350	360
Not EU	50	60	110	160	170	170	150	210	200	260

B.9 Placed applicants at 5 days after A level results day: providers in Northern Ireland

Selected applicant domiciles: difference between cycle and 2017 cycle (at 5 days after A level results day)

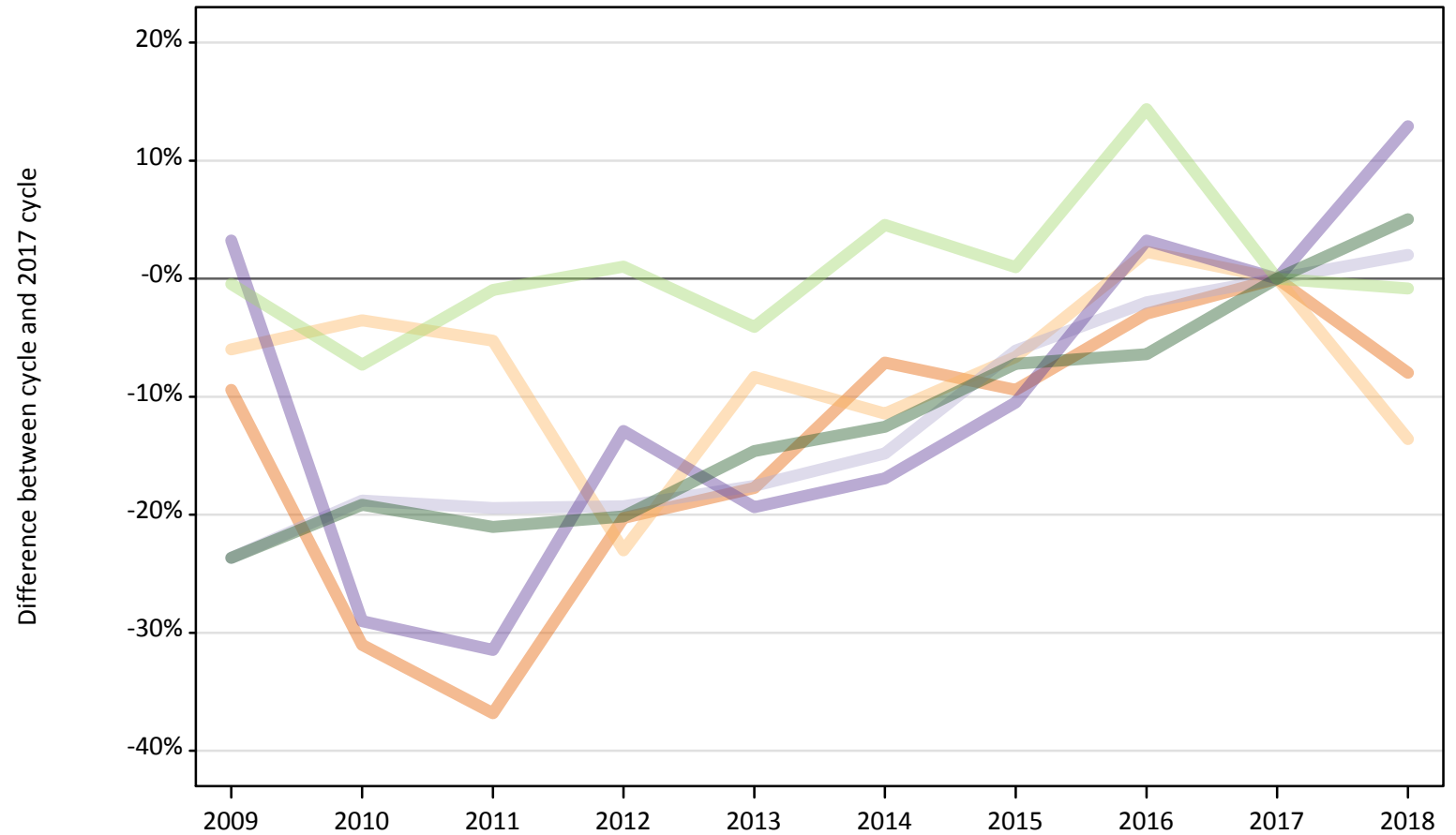
Domicile of applicant	2009	2010	2011	2012	2013	2014	2015	2016	2017	2018
England	-30%	-36%	-27%	-23%	-21%	14%	82%	-4%	0%	-3%
Northern Ireland	-3%	-3%	-6%	-6%	6%	5%	-3%	4%	0%	-6%
Scotland	-41%	-24%	-41%	-7%	-59%	-45%	-41%	-45%	0%	-14%
Wales	-21%	-57%	-50%			-50%	-21%	-29%	0%	-29%
EU (excluding UK)	31%	67%	24%	17%	28%	37%	11%	-0%	0%	2%
Not EU	-73%	-70%	-46%	-22%	-18%	-14%	-27%	4%	0%	28%

Note: The percentage change is not recorded in the above table for groups with fewer than 10 placed applicants in that cycle or in the 2017 cycle.

B.10 Placed applicants at 5 days after A level results day: providers in Scotland

Selected applicant domiciles: difference between cycle and 2017 cycle (at 5 days after A level results day)

- England
- Northern Ireland
- Scotland
- Wales
- EU (excluding UK)
- Not EU



Note: The percentage change is not plotted in the above chart for groups with fewer than 30 placed applicants in any one cycle.

B.11 Placed applicants at 5 days after A level results day: providers in Scotland

Placed applicants by domicile (at 5 days after A level results day)

Domicile of applicant	2009	2010	2011	2012	2013	2014	2015	2016	2017	2018
England	4,480	3,410	3,130	3,950	4,070	4,600	4,480	4,800	4,950	4,550
Northern Ireland	1,040	1,060	1,050	850	1,010	980	1,030	1,130	1,100	950
Scotland	24,220	25,760	25,560	25,610	26,160	27,030	29,790	31,090	31,730	32,370
Wales	130	90	90	110	100	100	110	130	120	140
EU (excluding UK)	3,980	3,710	3,960	4,040	3,840	4,180	4,040	4,570	4,000	3,970
Not EU	2,080	2,200	2,150	2,170	2,320	2,380	2,520	2,540	2,720	2,860

B.12 Placed applicants at 5 days after A level results day: providers in Scotland

Selected applicant domiciles: difference between cycle and 2017 cycle (at 5 days after A level results day)

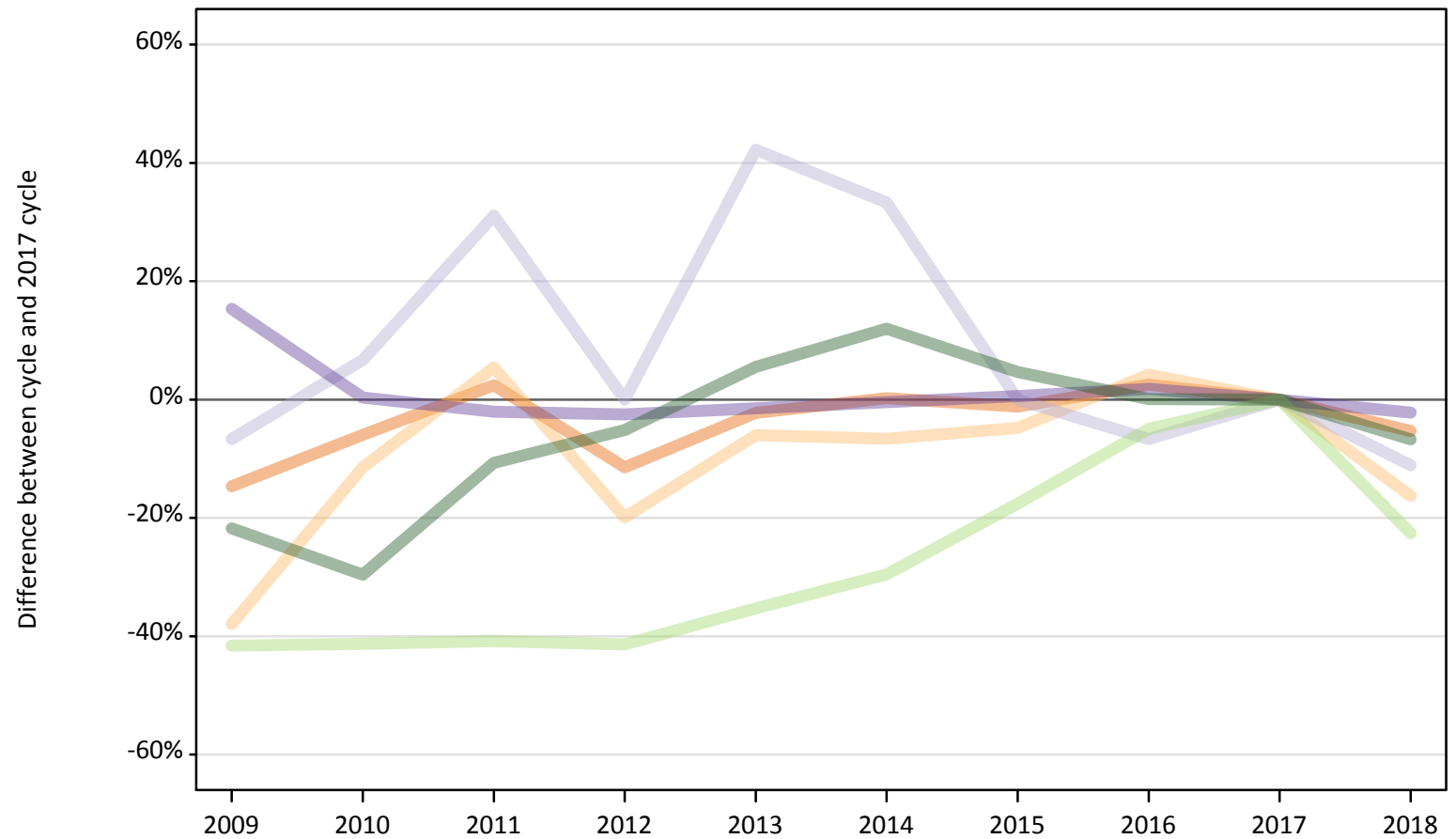
Domicile of applicant	2009	2010	2011	2012	2013	2014	2015	2016	2017	2018
England	-9%	-31%	-37%	-20%	-18%	-7%	-9%	-3%	0%	-8%
Northern Ireland	-6%	-4%	-5%	-23%	-8%	-11%	-7%	2%	0%	-14%
Scotland	-24%	-19%	-19%	-19%	-18%	-15%	-6%	-2%	0%	2%
Wales	3%	-29%	-31%	-13%	-19%	-17%	-10%	3%	0%	13%
EU (excluding UK)	-0%	-7%	-1%	1%	-4%	5%	1%	14%	0%	-1%
Not EU	-24%	-19%	-21%	-20%	-15%	-13%	-7%	-6%	0%	5%

Note: The percentage change is not recorded in the above table for groups with fewer than 10 placed applicants in that cycle or in the 2017 cycle.

B.13 Placed applicants at 5 days after A level results day: providers in Wales

Selected applicant domiciles: difference between cycle and 2017 cycle (at 5 days after A level results day)

- England
- Northern Ireland
- Scotland
- Wales
- EU (excluding UK)
- Not EU



Note: The percentage change is not plotted in the above chart for groups with fewer than 30 placed applicants in any one cycle.

B.14 Placed applicants at 5 days after A level results day: providers in Wales

Placed applicants by domicile (at 5 days after A level results day)

Domicile of applicant	2009	2010	2011	2012	2013	2014	2015	2016	2017	2018
England	8,660	9,540	10,390	8,980	9,920	10,170	10,030	10,400	10,150	9,610
Northern Ireland	100	150	180	130	160	160	160	170	170	140
Scotland	40	50	60	50	60	60	50	40	50	40
Wales	11,790	10,260	10,010	9,970	10,070	10,170	10,280	10,410	10,220	10,000
EU (excluding UK)	800	800	810	800	890	960	1,130	1,300	1,370	1,060
Not EU	790	710	900	960	1,070	1,130	1,060	1,010	1,010	940

B.15 Placed applicants at 5 days after A level results day: providers in Wales

Selected applicant domiciles: difference between cycle and 2017 cycle (at 5 days after A level results day)

Domicile of applicant	2009	2010	2011	2012	2013	2014	2015	2016	2017	2018
England	-15%	-6%	2%	-11%	-2%	0%	-1%	3%	0%	-5%
Northern Ireland	-38%	-11%	5%	-20%	-6%	-7%	-5%	4%	0%	-16%
Scotland	-7%	7%	31%	0%	42%	33%	0%	-7%	0%	-11%
Wales	15%	0%	-2%	-3%	-1%	-0%	1%	2%	0%	-2%
EU (excluding UK)	-42%	-41%	-41%	-41%	-35%	-30%	-18%	-5%	0%	-23%
Not EU	-22%	-30%	-11%	-5%	6%	12%	5%	0%	0%	-7%

Note: The percentage change is not recorded in the above table for groups with fewer than 10 placed applicants in that cycle or in the 2017 cycle.

B.16 Placed applicants at 5 days after A level results day: providers in the UK

Selected applicant domiciles: difference between cycle and 2017 cycle (at 5 days after A level results day)

- England
- Northern Ireland
- Scotland
- Wales
- EU (excluding UK)
- Not EU



Note: The percentage change is not plotted in the above chart for groups with fewer than 30 placed applicants in any one cycle.

B.17 Placed applicants at 5 days after A level results day: providers in the UK

Placed applicants by domicile (at 5 days after A level results day)

Domicile of applicant	2009	2010	2011	2012	2013	2014	2015	2016	2017	2018
England	305,130	315,200	325,950	301,010	324,750	334,870	343,390	349,010	342,840	333,610
Northern Ireland	11,870	12,200	12,480	11,570	13,000	12,910	12,660	13,480	13,080	12,320
Scotland	25,810	27,450	27,150	27,020	27,640	28,500	31,390	32,760	33,330	33,860
Wales	17,130	16,370	16,160	16,960	17,150	17,950	18,320	18,590	18,150	17,680
EU (excluding UK)	20,110	21,970	23,600	20,350	21,670	23,490	25,990	28,600	27,890	28,180
Not EU	23,580	25,700	25,910	27,090	29,020	30,560	32,100	32,270	33,380	34,690

B.18 Placed applicants at 5 days after A level results day: providers in the UK

Selected applicant domiciles: difference between cycle and 2017 cycle (at 5 days after A level results day)

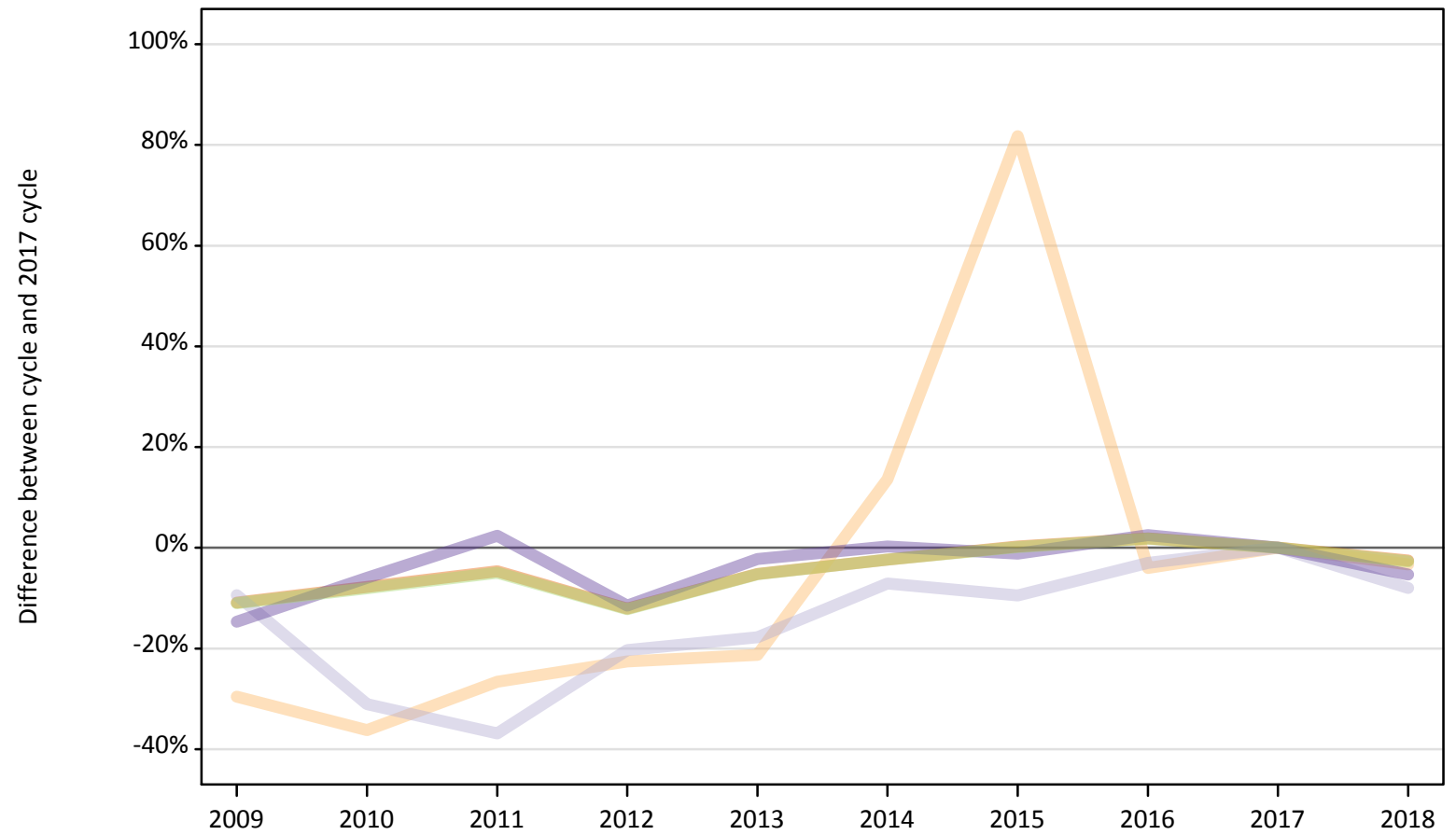
Domicile of applicant	2009	2010	2011	2012	2013	2014	2015	2016	2017	2018
England	-11%	-8%	-5%	-12%	-5%	-2%	0%	2%	0%	-3%
Northern Ireland	-9%	-7%	-5%	-12%	-1%	-1%	-3%	3%	0%	-6%
Scotland	-23%	-18%	-19%	-19%	-17%	-14%	-6%	-2%	0%	2%
Wales	-6%	-10%	-11%	-7%	-6%	-1%	1%	2%	0%	-3%
EU (excluding UK)	-28%	-21%	-15%	-27%	-22%	-16%	-7%	3%	0%	1%
Not EU	-29%	-23%	-22%	-19%	-13%	-8%	-4%	-3%	0%	4%

Note: The percentage change is not recorded in the above table for groups with fewer than 10 placed applicants in that cycle or in the 2017 cycle.

B.19 Placed applicants at 5 days after A level results day: domiciled in England

Selected provider countries: difference between cycle and 2017 cycle (at 5 days after A level results day)

- England
- Northern Ireland
- Scotland
- Wales
- UK



Note: The percentage change is not plotted in the above chart for groups with fewer than 30 placed applicants in any one cycle.

B.20 Placed applicants at 5 days after A level results day: domiciled in England

Placed applicants by provider country (at 5 days after A level results day)

Country of provider	2009	2010	2011	2012	2013	2014	2015	2016	2017	2018
England	291,780	302,060	312,210	287,850	310,520	319,760	328,330	333,520	327,440	319,160
Northern Ireland	210	190	220	230	240	340	550	290	300	290
Scotland	4,480	3,410	3,130	3,950	4,070	4,600	4,480	4,800	4,950	4,550
Wales	8,660	9,540	10,390	8,980	9,920	10,170	10,030	10,400	10,150	9,610
UK	305,130	315,200	325,950	301,010	324,750	334,870	343,390	349,010	342,840	333,610

B.21 Placed applicants at 5 days after A level results day: domiciled in England

Selected provider countries: difference between cycle and 2017 cycle (at 5 days after A level results day)

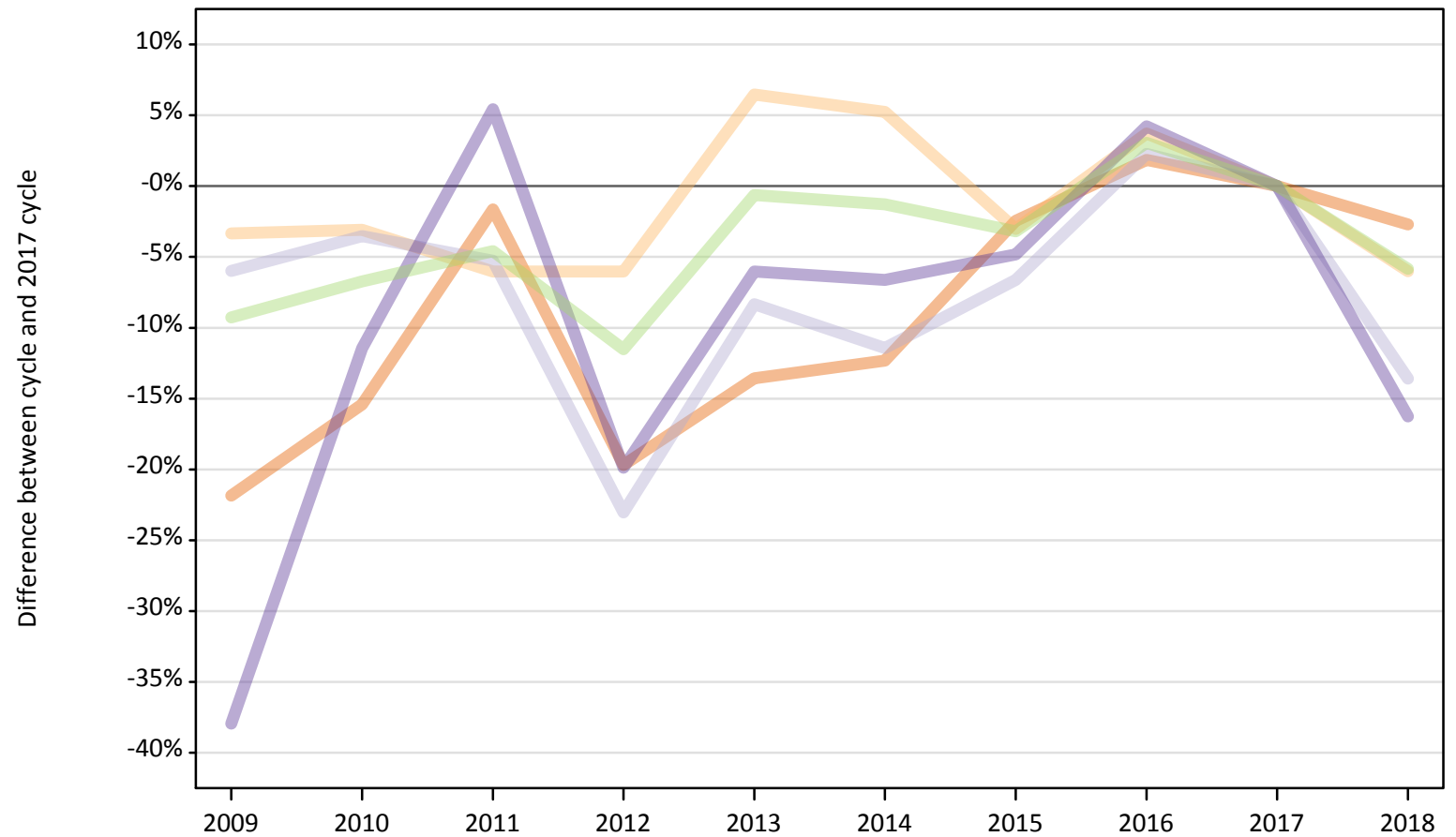
Country of provider	2009	2010	2011	2012	2013	2014	2015	2016	2017	2018
England	-11%	-8%	-5%	-12%	-5%	-2%	0%	2%	0%	-3%
Northern Ireland	-30%	-36%	-27%	-23%	-21%	14%	82%	-4%	0%	-3%
Scotland	-9%	-31%	-37%	-20%	-18%	-7%	-9%	-3%	0%	-8%
Wales	-15%	-6%	2%	-11%	-2%	0%	-1%	3%	0%	-5%
UK	-11%	-8%	-5%	-12%	-5%	-2%	0%	2%	0%	-3%

Note: The percentage change is not recorded in the above table for groups with fewer than 10 placed applicants in that cycle or in the 2017 cycle.

B.22 Placed applicants at 5 days after A level results day: domiciled in Northern Ireland

Selected provider countries: difference between cycle and 2017 cycle (at 5 days after A level results day)

- England
- Northern Ireland
- Scotland
- Wales
- UK



Note: The percentage change is not plotted in the above chart for groups with fewer than 30 placed applicants in any one cycle.

B.23 Placed applicants at 5 days after A level results day: domiciled in Northern Ireland

Placed applicants by provider country (at 5 days after A level results day)

Country of provider	2009	2010	2011	2012	2013	2014	2015	2016	2017	2018
England	2,900	3,140	3,650	2,980	3,210	3,260	3,620	3,780	3,710	3,610
Northern Ireland	7,830	7,850	7,610	7,610	8,620	8,520	7,850	8,400	8,100	7,610
Scotland	1,040	1,060	1,050	850	1,010	980	1,030	1,130	1,100	950
Wales	100	150	180	130	160	160	160	170	170	140
UK	11,870	12,200	12,480	11,570	13,000	12,910	12,660	13,480	13,080	12,320

B.24 Placed applicants at 5 days after A level results day: domiciled in Northern Ireland

Selected provider countries: difference between cycle and 2017 cycle (at 5 days after A level results day)

Country of provider	2009	2010	2011	2012	2013	2014	2015	2016	2017	2018
England	-22%	-15%	-2%	-20%	-14%	-12%	-2%	2%	0%	-3%
Northern Ireland	-3%	-3%	-6%	-6%	6%	5%	-3%	4%	0%	-6%
Scotland	-6%	-4%	-5%	-23%	-8%	-11%	-7%	2%	0%	-14%
Wales	-38%	-11%	5%	-20%	-6%	-7%	-5%	4%	0%	-16%
UK	-9%	-7%	-5%	-12%	-1%	-1%	-3%	3%	0%	-6%

Note: The percentage change is not recorded in the above table for groups with fewer than 10 placed applicants in that cycle or in the 2017 cycle.

B.25 Placed applicants at 5 days after A level results day: domiciled in Scotland

Selected provider countries: difference between cycle and 2017 cycle (at 5 days after A level results day)

- England
- Northern Ireland
- Scotland
- Wales
- UK



Note: The percentage change is not plotted in the above chart for groups with fewer than 30 placed applicants in any one cycle.

B.26 Placed applicants at 5 days after A level results day: domiciled in Scotland

Placed applicants by provider country (at 5 days after A level results day)

Country of provider	2009	2010	2011	2012	2013	2014	2015	2016	2017	2018
England	1,530	1,620	1,520	1,340	1,410	1,400	1,540	1,610	1,530	1,430
Northern Ireland	20	20	20	30	10	20	20	20	30	30
Scotland	24,220	25,760	25,560	25,610	26,160	27,030	29,790	31,090	31,730	32,370
Wales	40	50	60	50	60	60	50	40	50	40
UK	25,810	27,450	27,150	27,020	27,640	28,500	31,390	32,760	33,330	33,860

B.27 Placed applicants at 5 days after A level results day: domiciled in Scotland

Selected provider countries: difference between cycle and 2017 cycle (at 5 days after A level results day)

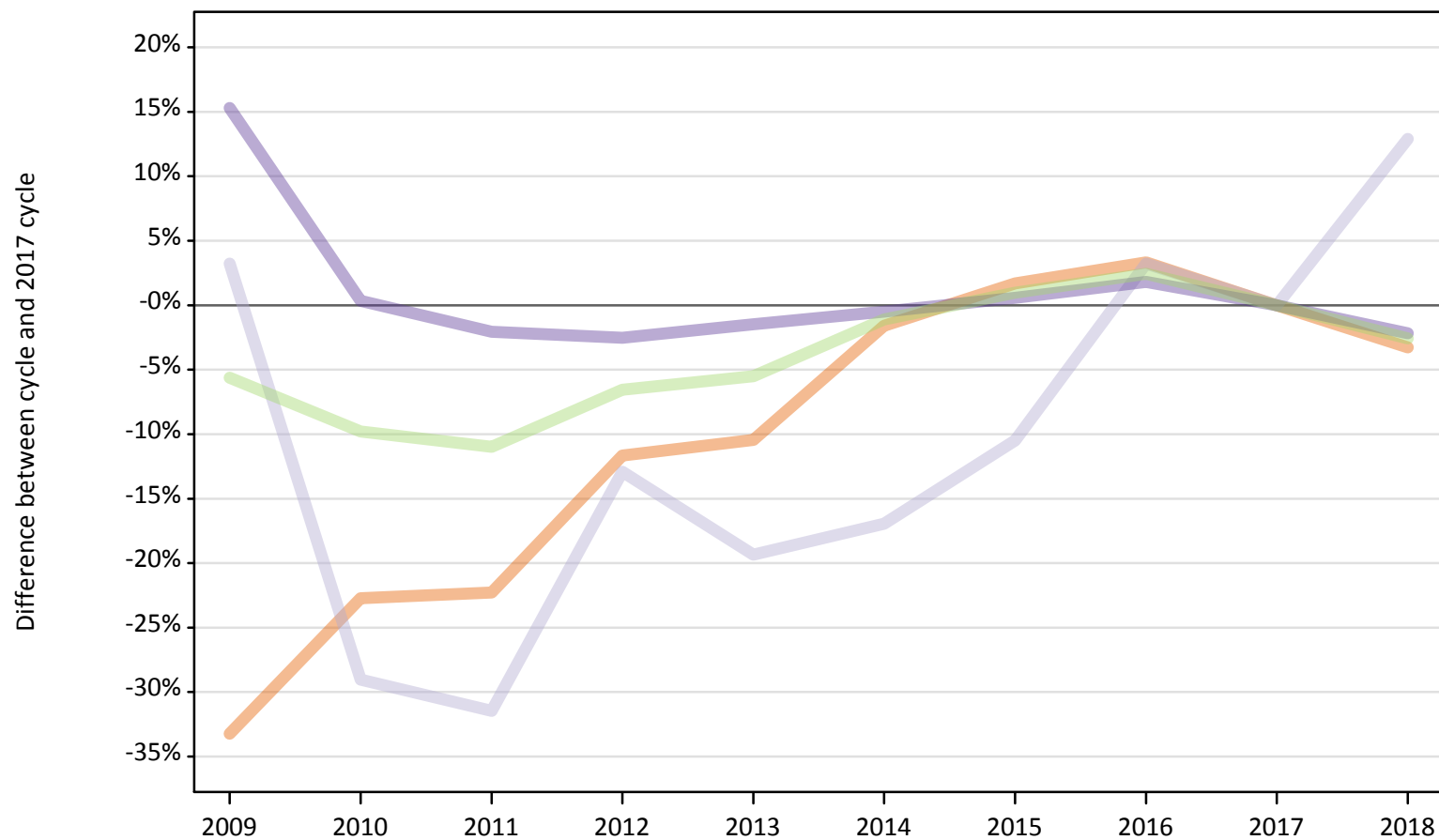
Country of provider	2009	2010	2011	2012	2013	2014	2015	2016	2017	2018
England	-0%	6%	-1%	-13%	-8%	-9%	0%	5%	0%	-7%
Northern Ireland	-41%	-24%	-41%	-7%	-59%	-45%	-41%	-45%	0%	-14%
Scotland	-24%	-19%	-19%	-19%	-18%	-15%	-6%	-2%	0%	2%
Wales	-7%	7%	31%	0%	42%	33%	0%	-7%	0%	-11%
UK	-23%	-18%	-19%	-19%	-17%	-14%	-6%	-2%	0%	2%

Note: The percentage change is not recorded in the above table for groups with fewer than 10 placed applicants in that cycle or in the 2017 cycle.

B.28 Placed applicants at 5 days after A level results day: domiciled in Wales

Selected provider countries: difference between cycle and 2017 cycle (at 5 days after A level results day)

- England
- Northern Ireland
- Scotland
- Wales
- UK



Note: The percentage change is not plotted in the above chart for groups with fewer than 30 placed applicants in any one cycle.

B.29 Placed applicants at 5 days after A level results day: domiciled in Wales

Placed applicants by provider country (at 5 days after A level results day)

Country of provider	2009	2010	2011	2012	2013	2014	2015	2016	2017	2018
England	5,200	6,020	6,050	6,880	6,970	7,660	7,920	8,050	7,790	7,530
Northern Ireland	10	10	10	0	0	10	10	10	10	10
Scotland	130	90	90	110	100	100	110	130	120	140
Wales	11,790	10,260	10,010	9,970	10,070	10,170	10,280	10,410	10,220	10,000
UK	17,130	16,370	16,160	16,960	17,150	17,950	18,320	18,590	18,150	17,680

B.30 Placed applicants at 5 days after A level results day: domiciled in Wales

Selected provider countries: difference between cycle and 2017 cycle (at 5 days after A level results day)

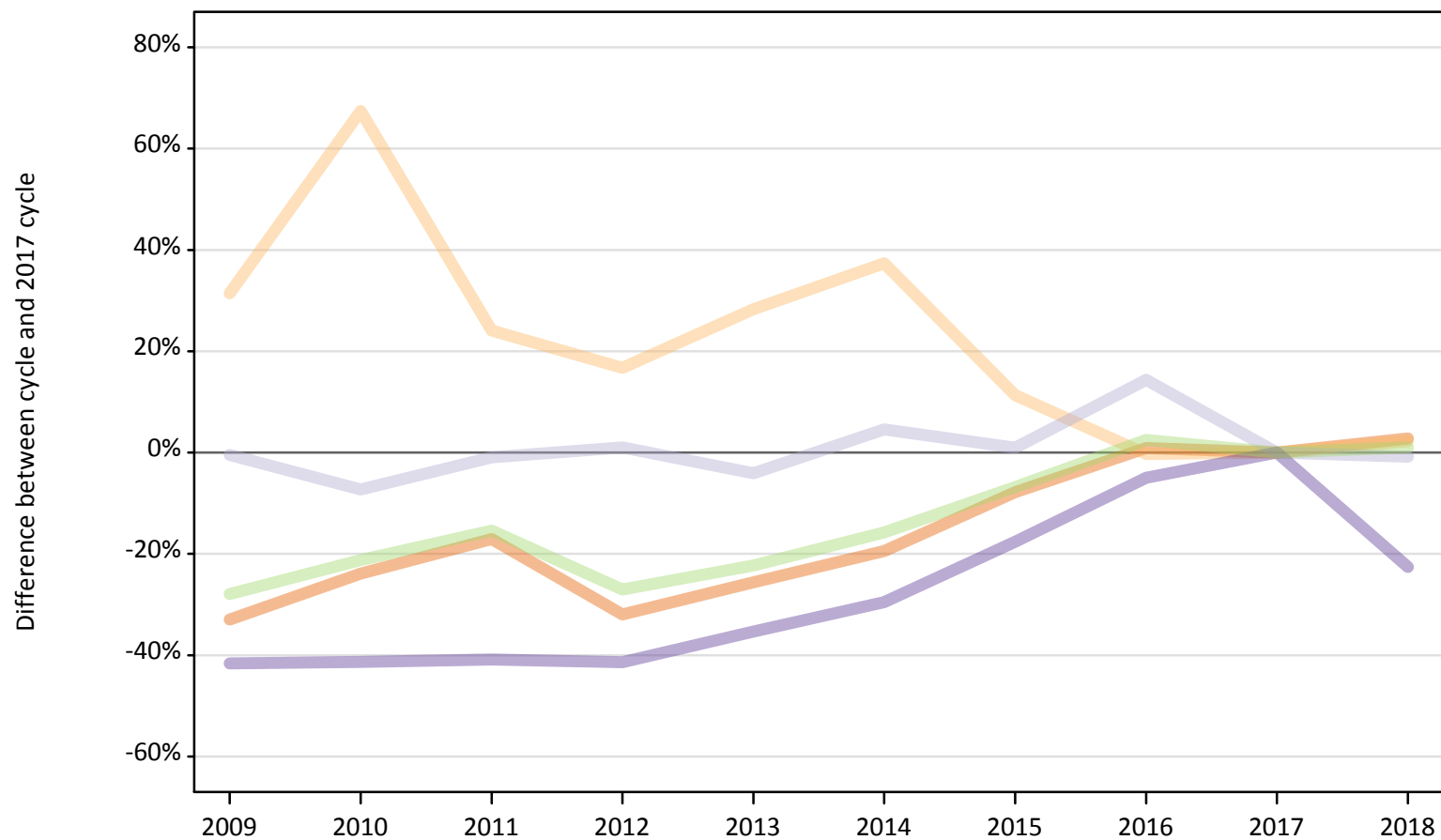
Country of provider	2009	2010	2011	2012	2013	2014	2015	2016	2017	2018
England	-33%	-23%	-22%	-12%	-10%	-2%	2%	3%	0%	-3%
Northern Ireland	-21%	-57%	-50%			-50%	-21%	-29%	0%	-29%
Scotland	3%	-29%	-31%	-13%	-19%	-17%	-10%	3%	0%	13%
Wales	15%	0%	-2%	-3%	-1%	-0%	1%	2%	0%	-2%
UK	-6%	-10%	-11%	-7%	-6%	-1%	1%	2%	0%	-3%

Note: The percentage change is not recorded in the above table for groups with fewer than 10 placed applicants in that cycle or in the 2017 cycle.

B.31 Placed applicants at 5 days after A level results day: domiciled in EU (excluding UK)

Selected provider countries: difference between cycle and 2017 cycle (at 5 days after A level results day)

- England
- Northern Ireland
- Scotland
- Wales
- UK



Note: The percentage change is not plotted in the above chart for groups with fewer than 30 placed applicants in any one cycle.

B.32 Placed applicants at 5 days after A level results day: domiciled in EU (excluding UK)

Placed applicants by provider country (at 5 days after A level results day)

Country of provider	2009	2010	2011	2012	2013	2014	2015	2016	2017	2018
England	14,870	16,870	18,390	15,090	16,490	17,860	20,430	22,370	22,170	22,800
Northern Ireland	460	590	440	410	450	490	390	350	350	360
Scotland	3,980	3,710	3,960	4,040	3,840	4,180	4,040	4,570	4,000	3,970
Wales	800	800	810	800	890	960	1,130	1,300	1,370	1,060
UK	20,110	21,970	23,600	20,350	21,670	23,490	25,990	28,600	27,890	28,180

B.33 Placed applicants at 5 days after A level results day: domiciled in EU (excluding UK)

Selected provider countries: difference between cycle and 2017 cycle (at 5 days after A level results day)

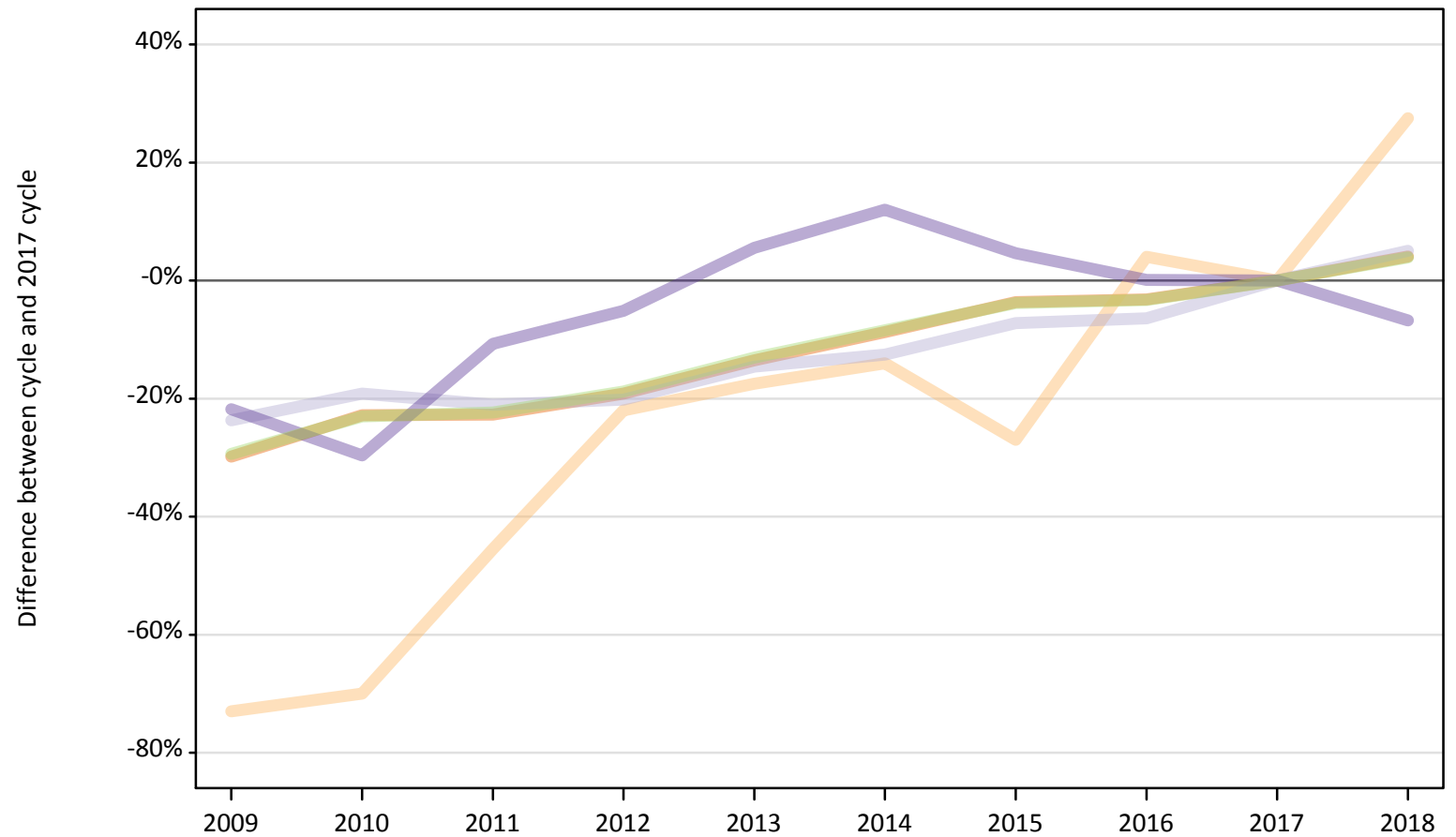
Country of provider	2009	2010	2011	2012	2013	2014	2015	2016	2017	2018
England	-33%	-24%	-17%	-32%	-26%	-19%	-8%	1%	0%	3%
Northern Ireland	31%	67%	24%	17%	28%	37%	11%	-0%	0%	2%
Scotland	-0%	-7%	-1%	1%	-4%	5%	1%	14%	0%	-1%
Wales	-42%	-41%	-41%	-41%	-35%	-30%	-18%	-5%	0%	-23%
UK	-28%	-21%	-15%	-27%	-22%	-16%	-7%	3%	0%	1%

Note: The percentage change is not recorded in the above table for groups with fewer than 10 placed applicants in that cycle or in the 2017 cycle.

B.34 Placed applicants at 5 days after A level results day: domiciled in Not EU

Selected provider countries: difference between cycle and 2017 cycle (at 5 days after A level results day)

- England
- Northern Ireland
- Scotland
- Wales
- UK



Note: The percentage change is not plotted in the above chart for groups with fewer than 30 placed applicants in any one cycle.

B.35 Placed applicants at 5 days after A level results day: domiciled in Not EU

Placed applicants by provider country (at 5 days after A level results day)

Country of provider	2009	2010	2011	2012	2013	2014	2015	2016	2017	2018
England	20,660	22,730	22,750	23,810	25,460	26,880	28,370	28,510	29,450	30,640
Northern Ireland	50	60	110	160	170	170	150	210	200	260
Scotland	2,080	2,200	2,150	2,170	2,320	2,380	2,520	2,540	2,720	2,860
Wales	790	710	900	960	1,070	1,130	1,060	1,010	1,010	940
UK	23,580	25,700	25,910	27,090	29,020	30,560	32,100	32,270	33,380	34,690

B.36 Placed applicants at 5 days after A level results day: domiciled in Not EU

Selected provider countries: difference between cycle and 2017 cycle (at 5 days after A level results day)

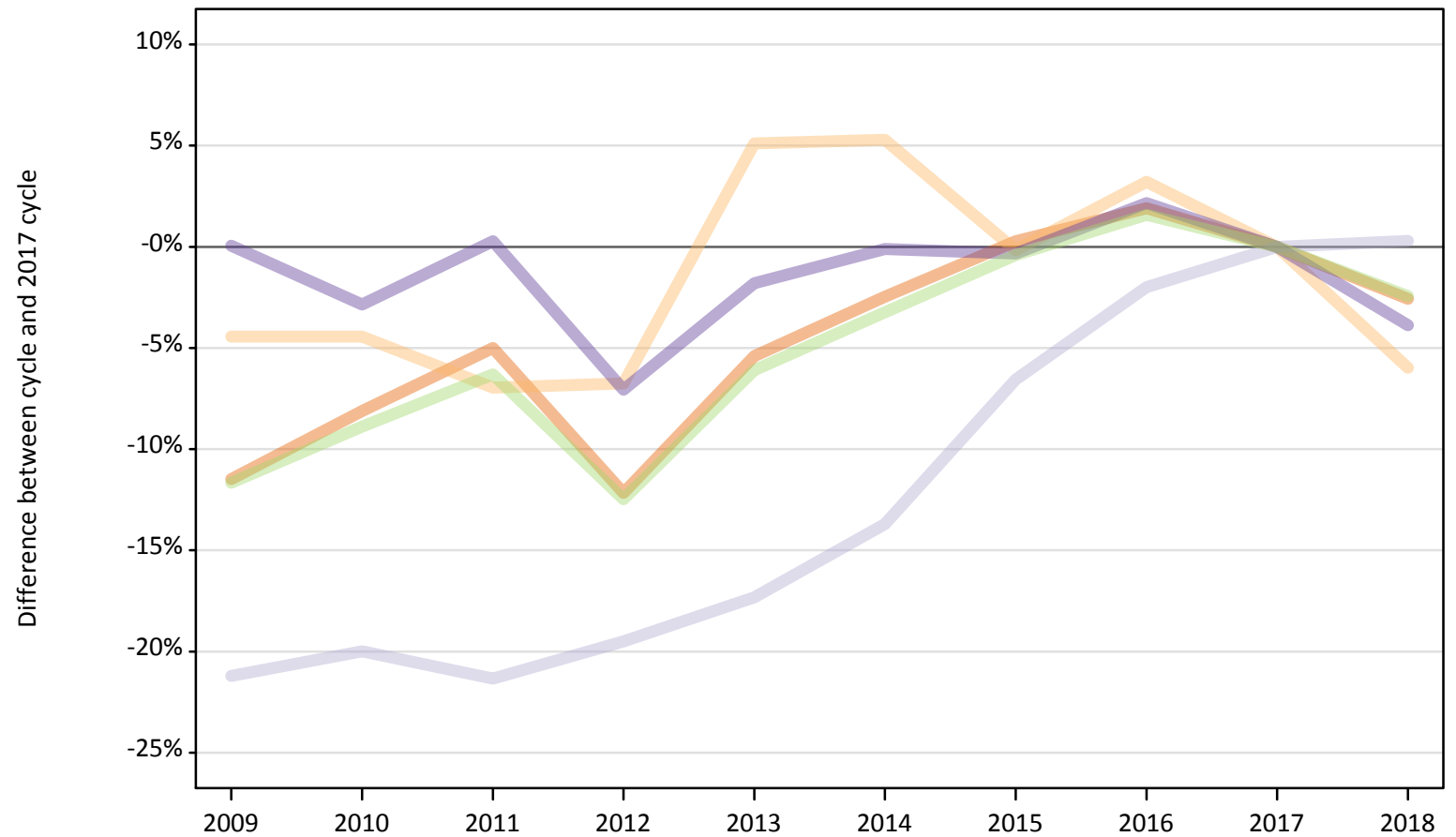
Country of provider	2009	2010	2011	2012	2013	2014	2015	2016	2017	2018
England	-30%	-23%	-23%	-19%	-14%	-9%	-4%	-3%	0%	4%
Northern Ireland	-73%	-70%	-46%	-22%	-18%	-14%	-27%	4%	0%	28%
Scotland	-24%	-19%	-21%	-20%	-15%	-13%	-7%	-6%	0%	5%
Wales	-22%	-30%	-11%	-5%	6%	12%	5%	0%	0%	-7%
UK	-29%	-23%	-22%	-19%	-13%	-8%	-4%	-3%	0%	4%

Note: The percentage change is not recorded in the above table for groups with fewer than 10 placed applicants in that cycle or in the 2017 cycle.

B.37 Placed applicants at 5 days after A level results day: domiciled in UK

Selected provider countries: difference between cycle and 2017 cycle (at 5 days after A level results day)

- England
- Northern Ireland
- Scotland
- Wales
- UK



Note: The percentage change is not plotted in the above chart for groups with fewer than 30 placed applicants in any one cycle.

B.38 Placed applicants at 5 days after A level results day: domiciled in UK

Placed applicants by provider country (at 5 days after A level results day)

Country of provider	2009	2010	2011	2012	2013	2014	2015	2016	2017	2018
England	301,400	312,840	323,430	299,050	322,110	332,070	341,410	346,960	340,480	331,730
Northern Ireland	8,070	8,070	7,860	7,870	8,880	8,890	8,430	8,710	8,440	7,940
Scotland	29,870	30,330	29,820	30,510	31,340	32,710	35,410	37,150	37,900	38,020
Wales	20,590	19,990	20,640	19,130	20,210	20,560	20,510	21,030	20,580	19,780
UK	359,930	371,230	381,740	356,560	382,540	394,220	405,760	413,840	407,400	397,470

B.39 Placed applicants at 5 days after A level results day: domiciled in UK

Selected provider countries: difference between cycle and 2017 cycle (at 5 days after A level results day)

Country of provider	2009	2010	2011	2012	2013	2014	2015	2016	2017	2018
England	-11%	-8%	-5%	-12%	-5%	-2%	0%	2%	0%	-3%
Northern Ireland	-4%	-4%	-7%	-7%	5%	5%	-0%	3%	0%	-6%
Scotland	-21%	-20%	-21%	-20%	-17%	-14%	-7%	-2%	0%	0%
Wales	0%	-3%	0%	-7%	-2%	-0%	-0%	2%	0%	-4%
UK	-12%	-9%	-6%	-12%	-6%	-3%	-0%	2%	0%	-2%

Note: The percentage change is not recorded in the above table for groups with fewer than 10 placed applicants in that cycle or in the 2017 cycle.