

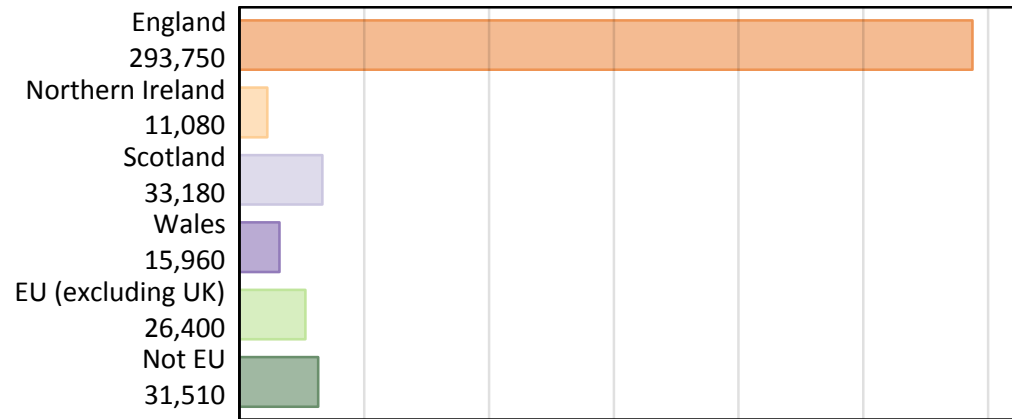
Daily Clearing Analysis: Country

Analysis at 00:05 on Thursday 16 August 2018 (A level results day)

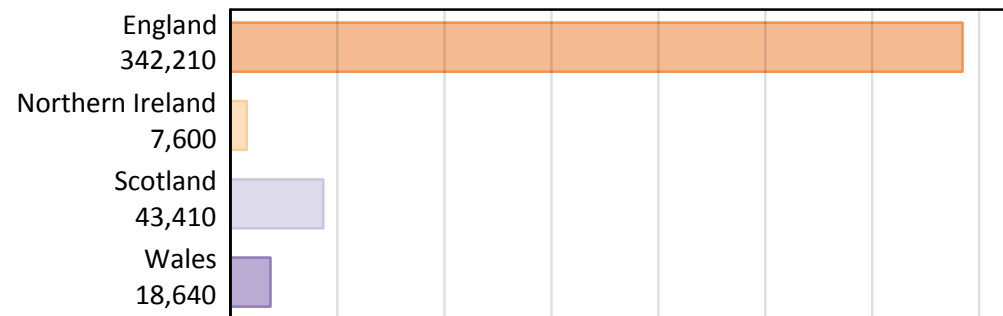
B.1 Placed applicants by country of provider and domicile, 2018 cycle

Domicile of applicant	Country of provider				
	England	Northern Ireland	Scotland	Wales	UK
England	281,640	220	4,080	7,820	293,750
Northern Ireland	3,280	6,820	860	130	11,080
Scotland	1,300	20	31,810	40	33,180
Wales	6,950	10	130	8,870	15,960
EU (excluding UK)	21,240	310	3,860	990	26,400
Not EU	27,790	230	2,680	810	31,510
All	342,210	7,600	43,410	18,640	411,860

B.2 Placed applicants by domicile group



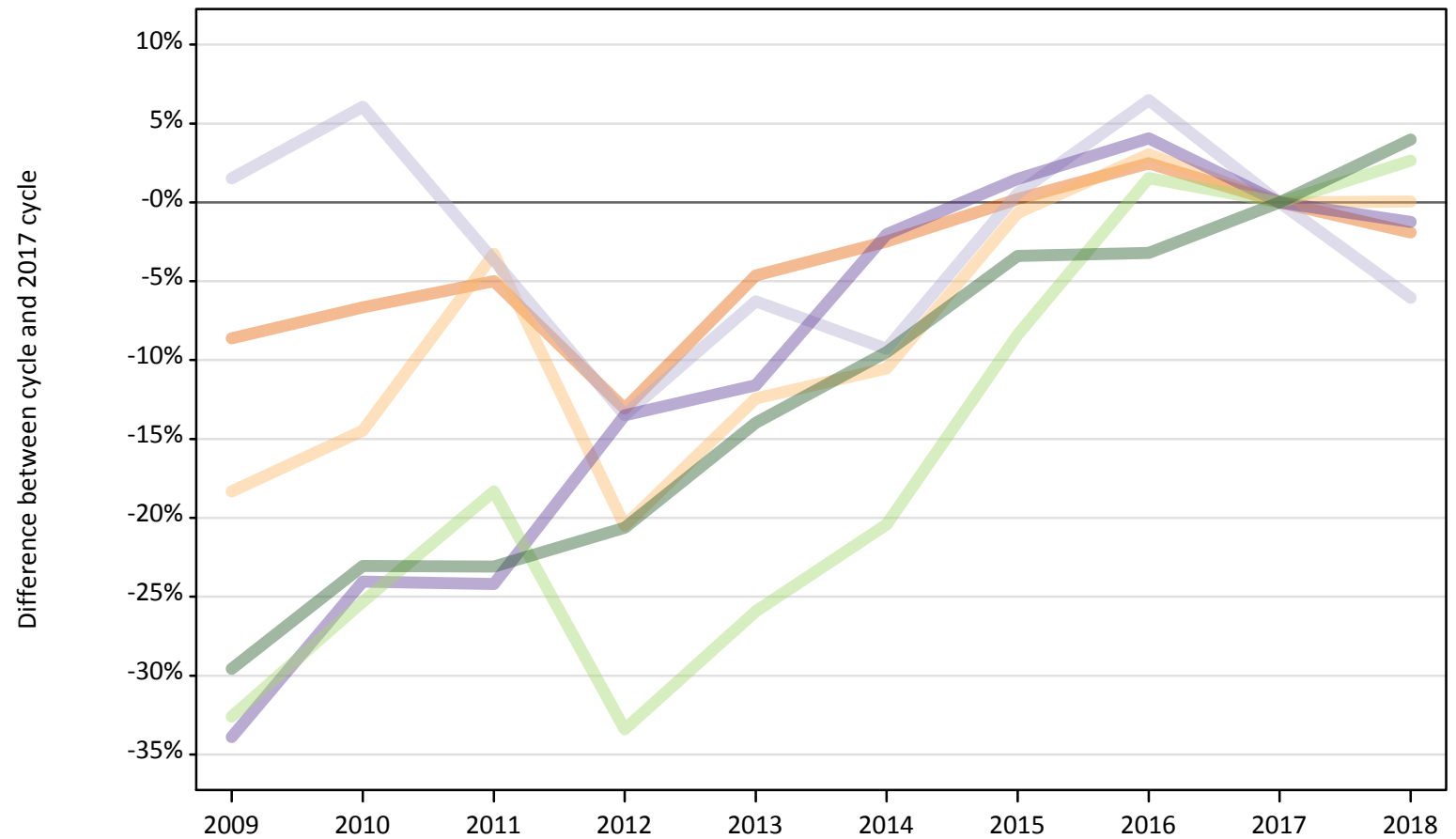
B.3 Placed applicants by country of provider



B.4 Placed applicants at A level results day: providers in England

Selected applicant domiciles: difference between cycle and 2017 cycle (at A level results day)

- England
- Northern Ireland
- Scotland
- Wales
- EU (excluding UK)
- Not EU



Note: The percentage change is not plotted in the above chart for groups with fewer than 30 placed applicants in any one cycle.

B.5 Placed applicants at A level results day: providers in England

Placed applicants by domicile (at A level results day)

Domicile of applicant	2009	2010	2011	2012	2013	2014	2015	2016	2017	2018
England	262,340	267,970	272,770	249,570	273,810	279,980	287,690	294,210	287,100	281,640
Northern Ireland	2,680	2,800	3,170	2,600	2,870	2,930	3,250	3,380	3,280	3,280
Scotland	1,410	1,470	1,340	1,200	1,300	1,260	1,400	1,480	1,390	1,300
Wales	4,650	5,350	5,340	6,090	6,230	6,900	7,150	7,330	7,040	6,950
EU (excluding UK)	13,950	15,450	16,900	13,780	15,330	16,470	18,960	21,010	20,690	21,240
Not EU	18,830	20,570	20,560	21,220	22,990	24,190	25,820	25,870	26,730	27,790

B.6 Placed applicants at A level results day: providers in England

Selected applicant domiciles: difference between cycle and 2017 cycle (at A level results day)

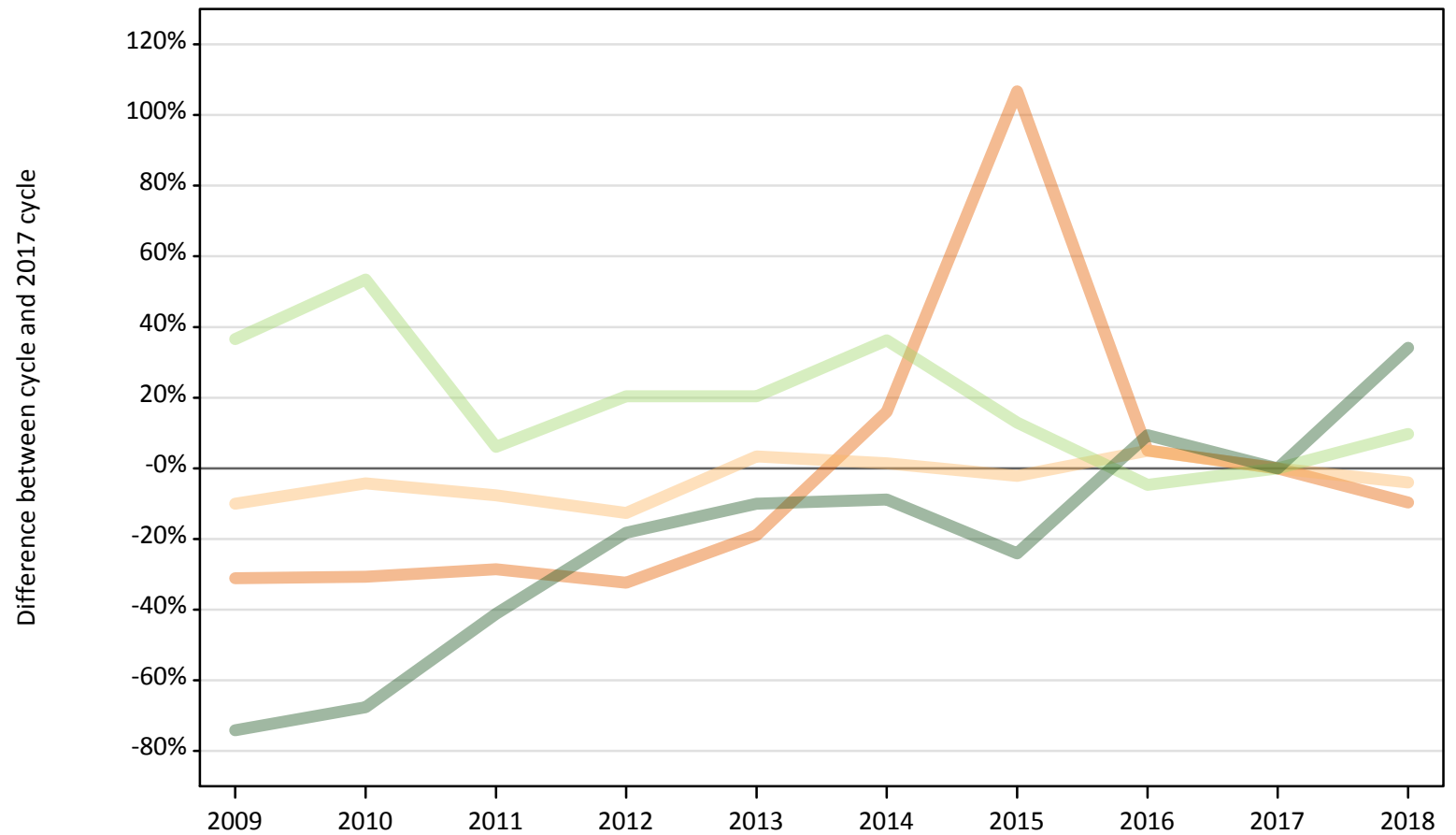
Domicile of applicant	2009	2010	2011	2012	2013	2014	2015	2016	2017	2018
England	-9%	-7%	-5%	-13%	-5%	-2%	0%	2%	0%	-2%
Northern Ireland	-18%	-14%	-3%	-20%	-12%	-11%	-1%	3%	0%	0%
Scotland	2%	6%	-4%	-13%	-6%	-9%	1%	6%	0%	-6%
Wales	-34%	-24%	-24%	-14%	-12%	-2%	1%	4%	0%	-1%
EU (excluding UK)	-33%	-25%	-18%	-33%	-26%	-20%	-8%	2%	0%	3%
Not EU	-30%	-23%	-23%	-21%	-14%	-9%	-3%	-3%	0%	4%

Note: The percentage change is not recorded in the above table for groups with fewer than 10 placed applicants in that cycle or in the 2017 cycle.

B.7 Placed applicants at A level results day: providers in Northern Ireland

Selected applicant domiciles: difference between cycle and 2017 cycle (at A level results day)

- England
- Northern Ireland
- Scotland
- Wales
- EU (excluding UK)
- Not EU



Note: The percentage change is not plotted in the above chart for groups with fewer than 30 placed applicants in any one cycle.

B.8 Placed applicants at A level results day: providers in Northern Ireland

Placed applicants by domicile (at A level results day)

Domicile of applicant	2009	2010	2011	2012	2013	2014	2015	2016	2017	2018
England	160	170	170	160	190	280	490	250	240	220
Northern Ireland	6,390	6,790	6,550	6,200	7,330	7,200	6,940	7,450	7,100	6,820
Scotland	20	20	20	20	10	20	20	10	30	20
Wales	10	10	10	0	0	10	10	10	10	10
EU (excluding UK)	380	430	300	340	340	380	320	270	280	310
Not EU	40	60	100	140	150	160	130	190	170	230

B.9 Placed applicants at A level results day: providers in Northern Ireland

Selected applicant domiciles: difference between cycle and 2017 cycle (at A level results day)

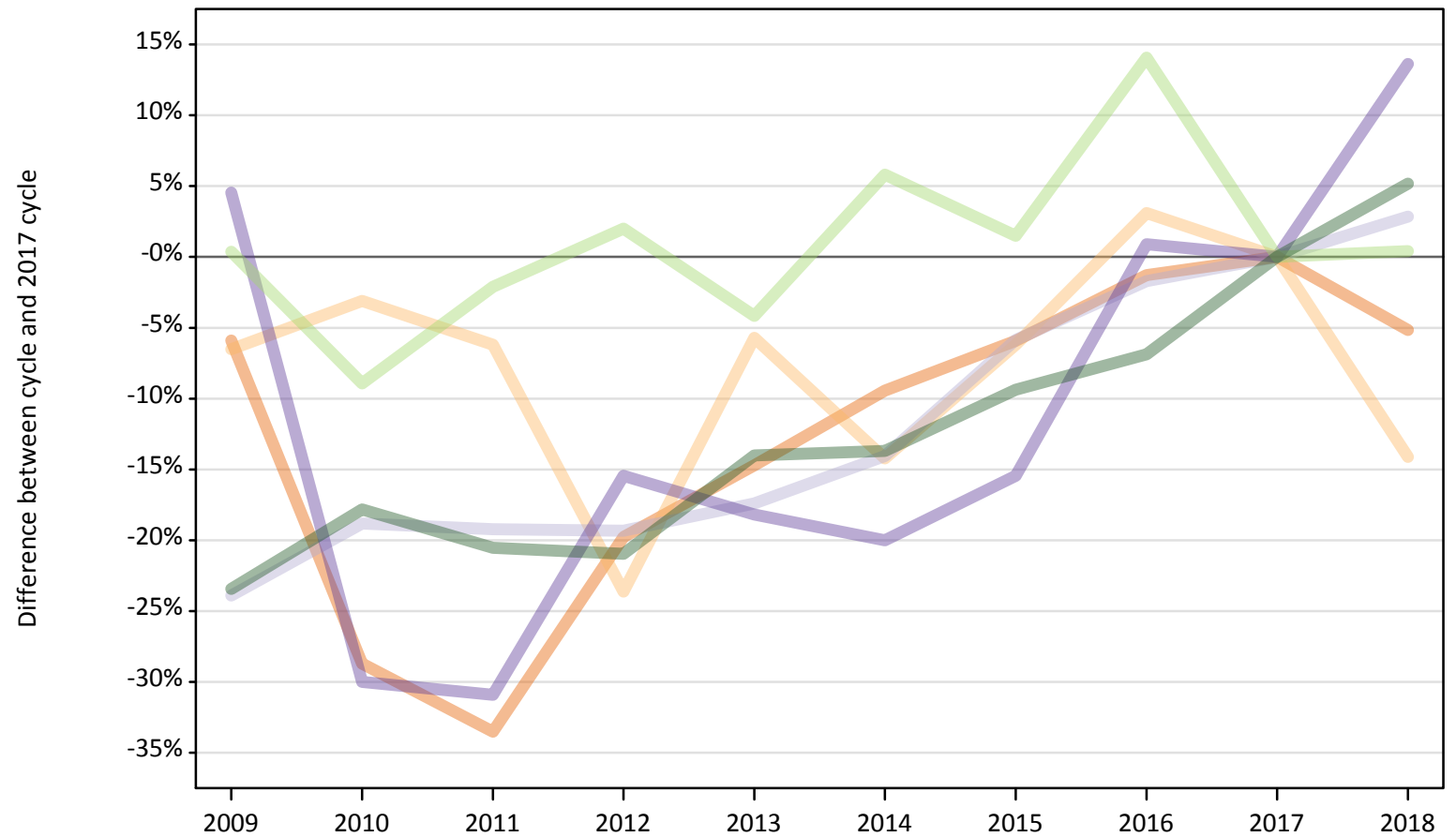
Domicile of applicant	2009	2010	2011	2012	2013	2014	2015	2016	2017	2018
England	-31%	-31%	-29%	-32%	-19%	16%	107%	5%	0%	-10%
Northern Ireland	-10%	-4%	-8%	-13%	3%	1%	-2%	5%	0%	-4%
Scotland	-46%	-36%	-39%	-18%	-57%	-46%	-46%	-57%	0%	-18%
Wales	-17%	-50%	-50%			-58%	-25%	-50%	0%	-17%
EU (excluding UK)	37%	53%	6%	20%	20%	36%	13%	-5%	0%	10%
Not EU	-74%	-68%	-41%	-18%	-10%	-9%	-24%	9%	0%	34%

Note: The percentage change is not recorded in the above table for groups with fewer than 10 placed applicants in that cycle or in the 2017 cycle.

B.10 Placed applicants at A level results day: providers in Scotland

Selected applicant domiciles: difference between cycle and 2017 cycle (at A level results day)

- England
- Northern Ireland
- Scotland
- Wales
- EU (excluding UK)
- Not EU



Note: The percentage change is not plotted in the above chart for groups with fewer than 30 placed applicants in any one cycle.

B.11 Placed applicants at A level results day: providers in Scotland

Placed applicants by domicile (at A level results day)

Domicile of applicant	2009	2010	2011	2012	2013	2014	2015	2016	2017	2018
England	4,050	3,070	2,860	3,450	3,670	3,900	4,050	4,250	4,300	4,080
Northern Ireland	930	970	940	760	940	860	940	1,030	1,000	860
Scotland	23,540	25,110	24,980	24,950	25,550	26,590	29,120	30,400	30,930	31,810
Wales	120	80	80	90	90	90	90	110	110	130
EU (excluding UK)	3,860	3,500	3,760	3,920	3,680	4,070	3,900	4,380	3,840	3,860
Not EU	1,950	2,090	2,020	2,010	2,190	2,200	2,310	2,370	2,550	2,680

B.12 Placed applicants at A level results day: providers in Scotland

Selected applicant domiciles: difference between cycle and 2017 cycle (at A level results day)

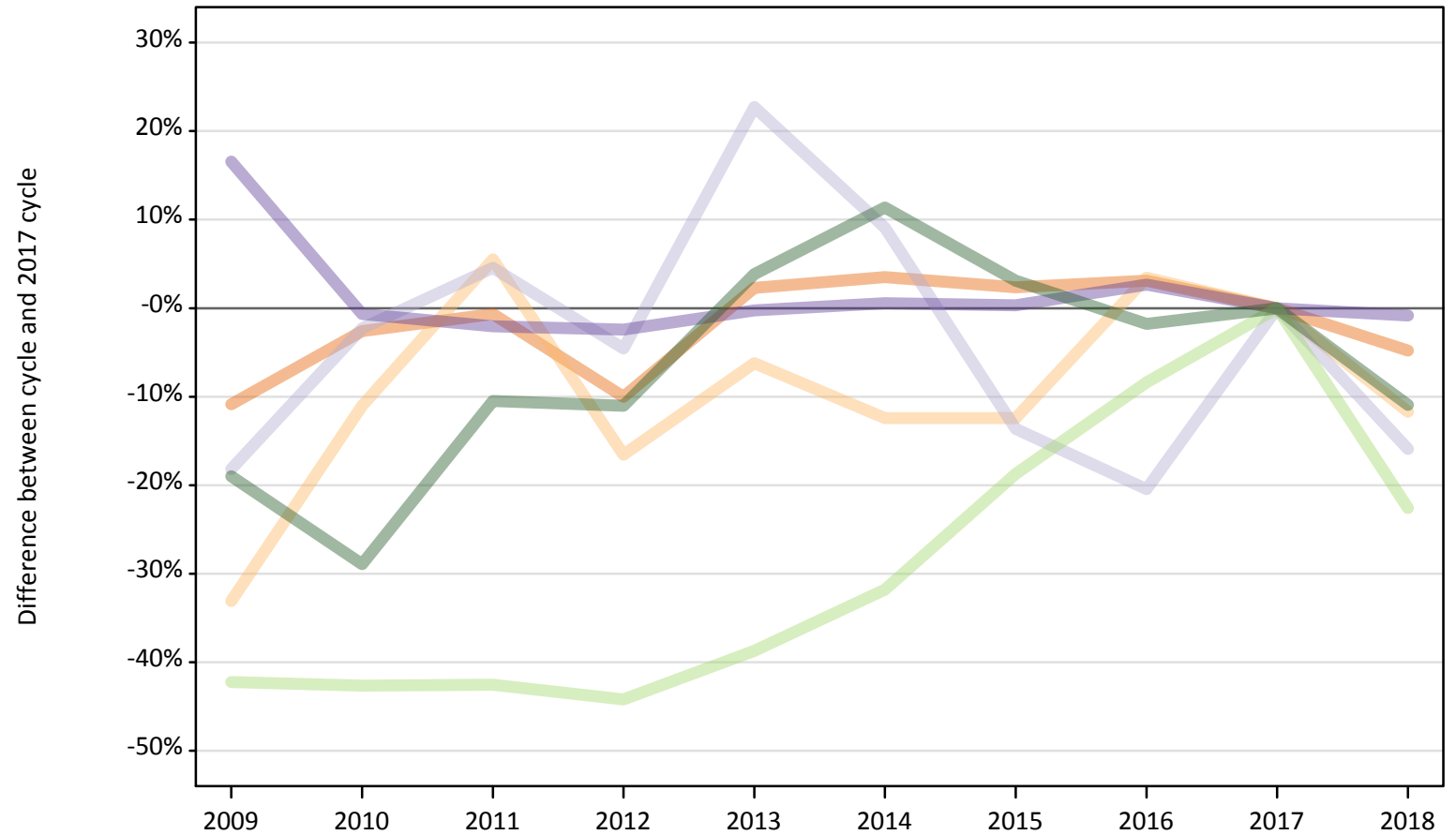
Domicile of applicant	2009	2010	2011	2012	2013	2014	2015	2016	2017	2018
England	-6%	-29%	-34%	-20%	-15%	-9%	-6%	-1%	0%	-5%
Northern Ireland	-7%	-3%	-6%	-24%	-6%	-14%	-6%	3%	0%	-14%
Scotland	-24%	-19%	-19%	-19%	-17%	-14%	-6%	-2%	0%	3%
Wales	5%	-30%	-31%	-15%	-18%	-20%	-15%	1%	0%	14%
EU (excluding UK)	0%	-9%	-2%	2%	-4%	6%	1%	14%	0%	0%
Not EU	-23%	-18%	-21%	-21%	-14%	-14%	-9%	-7%	0%	5%

Note: The percentage change is not recorded in the above table for groups with fewer than 10 placed applicants in that cycle or in the 2017 cycle.

B.13 Placed applicants at A level results day: providers in Wales

Selected applicant domiciles: difference between cycle and 2017 cycle (at A level results day)

- England
- Northern Ireland
- Scotland
- Wales
- EU (excluding UK)
- Not EU



Note: The percentage change is not plotted in the above chart for groups with fewer than 30 placed applicants in any one cycle.

B.14 Placed applicants at A level results day: providers in Wales

Placed applicants by domicile (at A level results day)

Domicile of applicant	2009	2010	2011	2012	2013	2014	2015	2016	2017	2018
England	7,320	8,000	8,160	7,390	8,400	8,500	8,410	8,470	8,210	7,820
Northern Ireland	100	130	150	120	140	130	130	150	150	130
Scotland	40	40	50	40	50	50	40	40	40	40
Wales	10,420	8,880	8,760	8,720	8,920	8,990	8,970	9,180	8,940	8,870
EU (excluding UK)	740	730	730	710	780	870	1,040	1,170	1,280	990
Not EU	730	640	810	810	940	1,010	930	890	910	810

B.15 Placed applicants at A level results day: providers in Wales

Selected applicant domiciles: difference between cycle and 2017 cycle (at A level results day)

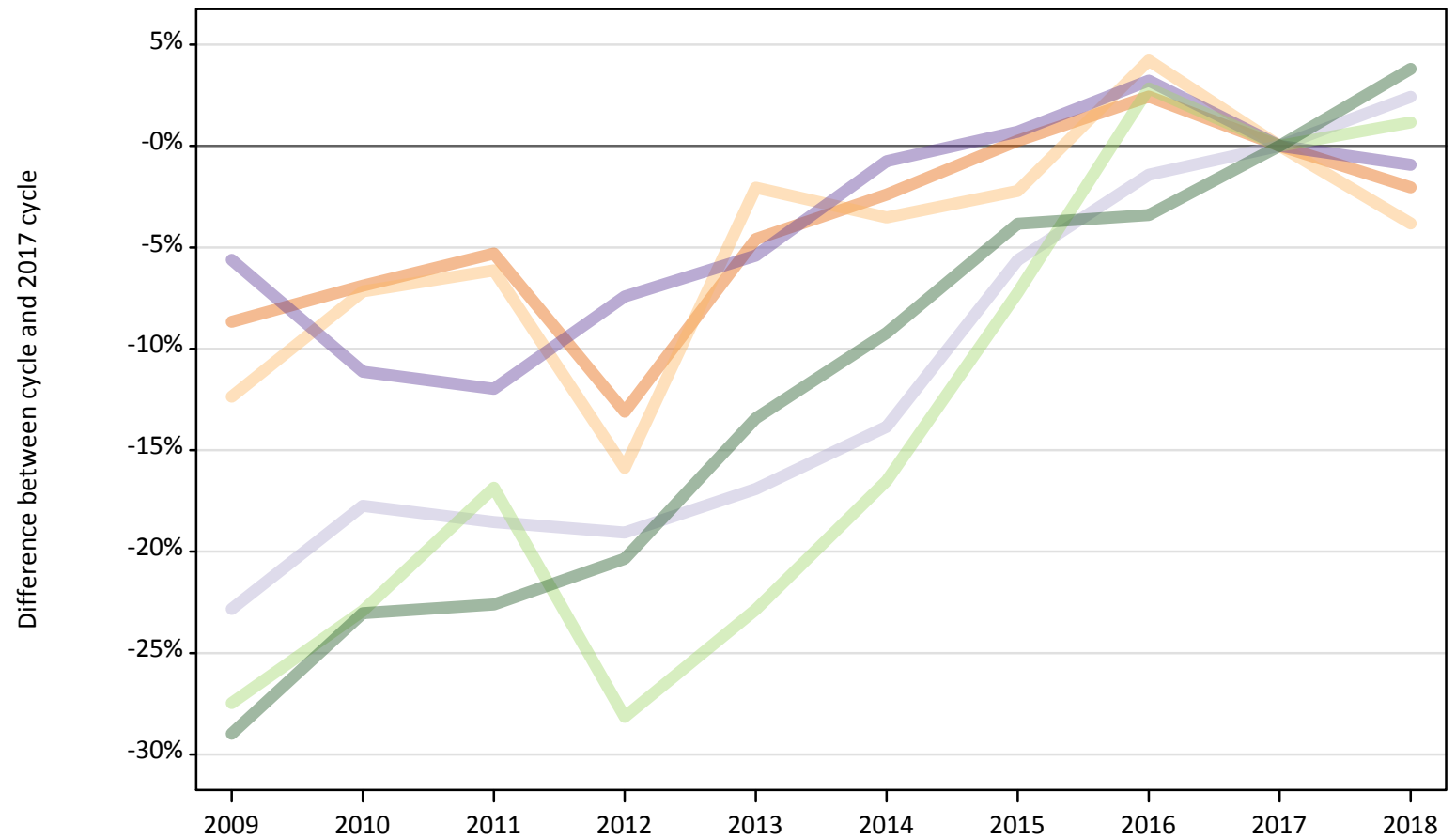
Domicile of applicant	2009	2010	2011	2012	2013	2014	2015	2016	2017	2018
England	-11%	-3%	-1%	-10%	2%	3%	2%	3%	0%	-5%
Northern Ireland	-33%	-11%	6%	-17%	-6%	-12%	-12%	3%	0%	-12%
Scotland	-18%	-2%	5%	-5%	23%	9%	-14%	-20%	0%	-16%
Wales	17%	-1%	-2%	-2%	-0%	1%	0%	3%	0%	-1%
EU (excluding UK)	-42%	-43%	-43%	-44%	-39%	-32%	-19%	-8%	0%	-23%
Not EU	-19%	-29%	-10%	-11%	4%	11%	3%	-2%	0%	-11%

Note: The percentage change is not recorded in the above table for groups with fewer than 10 placed applicants in that cycle or in the 2017 cycle.

B.16 Placed applicants at A level results day: providers in the UK

Selected applicant domiciles: difference between cycle and 2017 cycle (at A level results day)

- England
- Northern Ireland
- Scotland
- Wales
- EU (excluding UK)
- Not EU



Note: The percentage change is not plotted in the above chart for groups with fewer than 30 placed applicants in any one cycle.

B.17 Placed applicants at A level results day: providers in the UK

Placed applicants by domicile (at A level results day)

Domicile of applicant	2009	2010	2011	2012	2013	2014	2015	2016	2017	2018
England	273,870	279,200	283,960	260,570	286,070	292,650	300,630	307,170	299,850	293,750
Northern Ireland	10,090	10,690	10,810	9,690	11,280	11,110	11,260	12,000	11,520	11,080
Scotland	25,000	26,640	26,380	26,220	26,910	27,910	30,570	31,930	32,390	33,180
Wales	15,200	14,310	14,180	14,910	15,240	15,980	16,220	16,630	16,110	15,960
EU (excluding UK)	18,920	20,110	21,690	18,750	20,130	21,790	24,210	26,830	26,090	26,400
Not EU	21,560	23,360	23,490	24,180	26,280	27,560	29,190	29,320	30,350	31,510

B.18 Placed applicants at A level results day: providers in the UK

Selected applicant domiciles: difference between cycle and 2017 cycle (at A level results day)

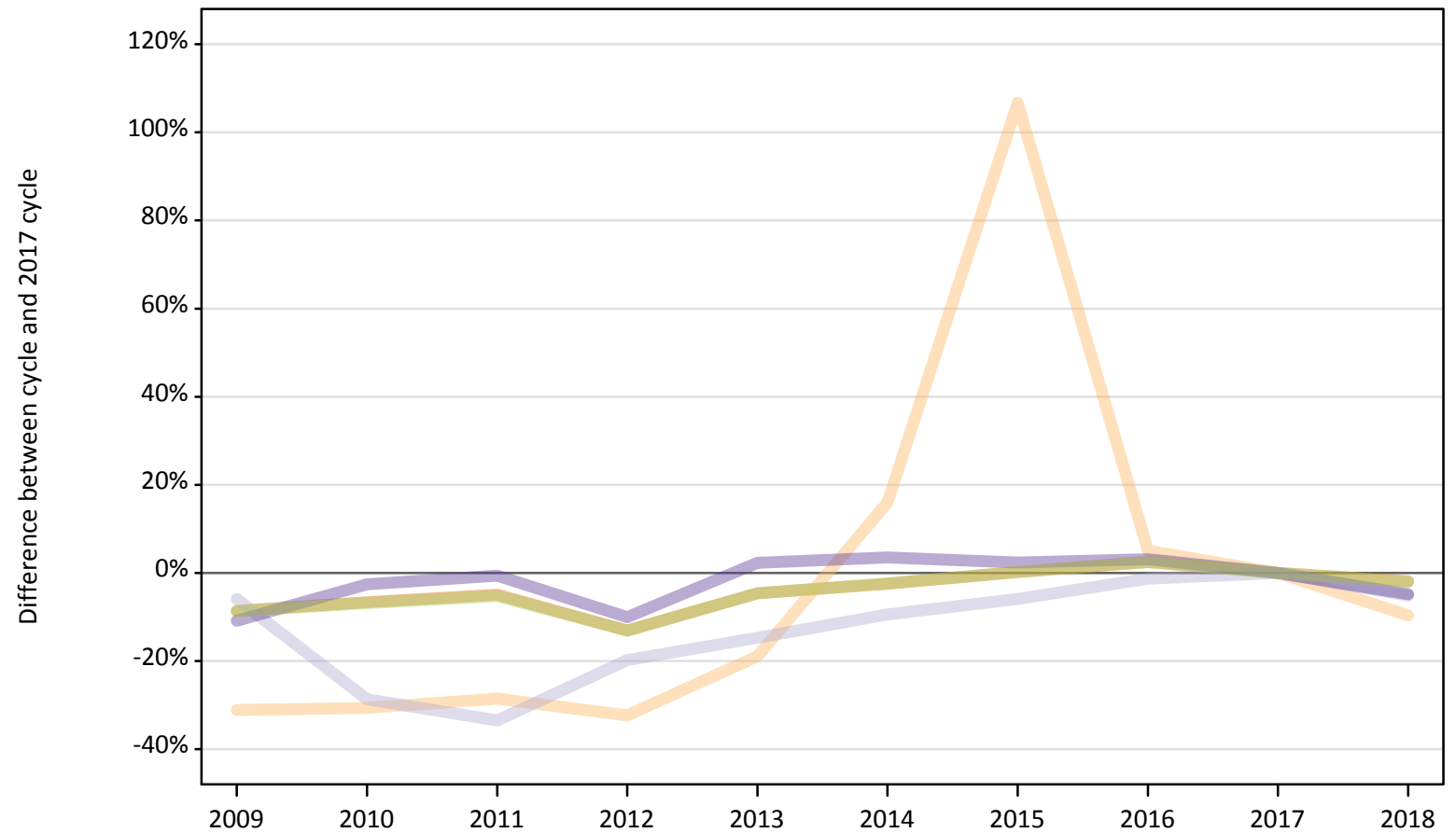
Domicile of applicant	2009	2010	2011	2012	2013	2014	2015	2016	2017	2018
England	-9%	-7%	-5%	-13%	-5%	-2%	0%	2%	0%	-2%
Northern Ireland	-12%	-7%	-6%	-16%	-2%	-4%	-2%	4%	0%	-4%
Scotland	-23%	-18%	-19%	-19%	-17%	-14%	-6%	-1%	0%	2%
Wales	-6%	-11%	-12%	-7%	-5%	-1%	1%	3%	0%	-1%
EU (excluding UK)	-27%	-23%	-17%	-28%	-23%	-17%	-7%	3%	0%	1%
Not EU	-29%	-23%	-23%	-20%	-13%	-9%	-4%	-3%	0%	4%

Note: The percentage change is not recorded in the above table for groups with fewer than 10 placed applicants in that cycle or in the 2017 cycle.

B.19 Placed applicants at A level results day: domiciled in England

Selected provider countries: difference between cycle and 2017 cycle (at A level results day)

- England
- Northern Ireland
- Scotland
- Wales
- UK



Note: The percentage change is not plotted in the above chart for groups with fewer than 30 placed applicants in any one cycle.

B.20 Placed applicants at A level results day: domiciled in England

Placed applicants by provider country (at A level results day)

Country of provider	2009	2010	2011	2012	2013	2014	2015	2016	2017	2018
England	262,340	267,970	272,770	249,570	273,810	279,980	287,690	294,210	287,100	281,640
Northern Ireland	160	170	170	160	190	280	490	250	240	220
Scotland	4,050	3,070	2,860	3,450	3,670	3,900	4,050	4,250	4,300	4,080
Wales	7,320	8,000	8,160	7,390	8,400	8,500	8,410	8,470	8,210	7,820
UK	273,870	279,200	283,960	260,570	286,070	292,650	300,630	307,170	299,850	293,750

B.21 Placed applicants at A level results day: domiciled in England

Selected provider countries: difference between cycle and 2017 cycle (at A level results day)

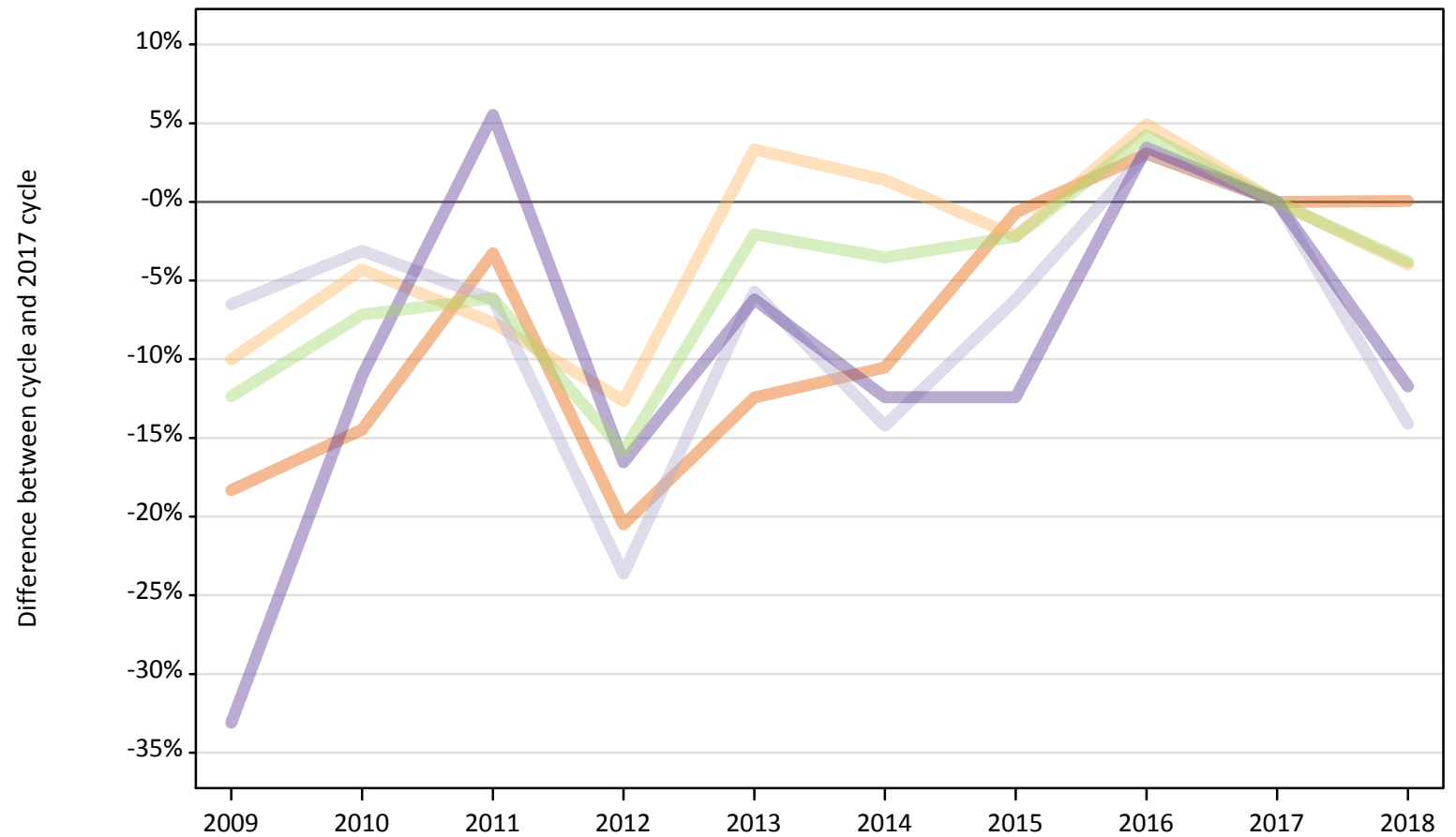
Country of provider	2009	2010	2011	2012	2013	2014	2015	2016	2017	2018
England	-9%	-7%	-5%	-13%	-5%	-2%	0%	2%	0%	-2%
Northern Ireland	-31%	-31%	-29%	-32%	-19%	16%	107%	5%	0%	-10%
Scotland	-6%	-29%	-34%	-20%	-15%	-9%	-6%	-1%	0%	-5%
Wales	-11%	-3%	-1%	-10%	2%	3%	2%	3%	0%	-5%
UK	-9%	-7%	-5%	-13%	-5%	-2%	0%	2%	0%	-2%

Note: The percentage change is not recorded in the above table for groups with fewer than 10 placed applicants in that cycle or in the 2017 cycle.

B.22 Placed applicants at A level results day: domiciled in Northern Ireland

Selected provider countries: difference between cycle and 2017 cycle (at A level results day)

- England
- Northern Ireland
- Scotland
- Wales
- UK



Note: The percentage change is not plotted in the above chart for groups with fewer than 30 placed applicants in any one cycle.

B.23 Placed applicants at A level results day: domiciled in Northern Ireland

Placed applicants by provider country (at A level results day)

Country of provider	2009	2010	2011	2012	2013	2014	2015	2016	2017	2018
England	2,680	2,800	3,170	2,600	2,870	2,930	3,250	3,380	3,280	3,280
Northern Ireland	6,390	6,790	6,550	6,200	7,330	7,200	6,940	7,450	7,100	6,820
Scotland	930	970	940	760	940	860	940	1,030	1,000	860
Wales	100	130	150	120	140	130	130	150	150	130
UK	10,090	10,690	10,810	9,690	11,280	11,110	11,260	12,000	11,520	11,080

B.24 Placed applicants at A level results day: domiciled in Northern Ireland

Selected provider countries: difference between cycle and 2017 cycle (at A level results day)

Country of provider	2009	2010	2011	2012	2013	2014	2015	2016	2017	2018
England	-18%	-14%	-3%	-20%	-12%	-11%	-1%	3%	0%	0%
Northern Ireland	-10%	-4%	-8%	-13%	3%	1%	-2%	5%	0%	-4%
Scotland	-7%	-3%	-6%	-24%	-6%	-14%	-6%	3%	0%	-14%
Wales	-33%	-11%	6%	-17%	-6%	-12%	-12%	3%	0%	-12%
UK	-12%	-7%	-6%	-16%	-2%	-4%	-2%	4%	0%	-4%

Note: The percentage change is not recorded in the above table for groups with fewer than 10 placed applicants in that cycle or in the 2017 cycle.

B.25 Placed applicants at A level results day: domiciled in Scotland

Selected provider countries: difference between cycle and 2017 cycle (at A level results day)

- England
- Northern Ireland
- Scotland
- Wales
- UK



Note: The percentage change is not plotted in the above chart for groups with fewer than 30 placed applicants in any one cycle.

B.26 Placed applicants at A level results day: domiciled in Scotland

Placed applicants by provider country (at A level results day)

Country of provider	2009	2010	2011	2012	2013	2014	2015	2016	2017	2018
England	1,410	1,470	1,340	1,200	1,300	1,260	1,400	1,480	1,390	1,300
Northern Ireland	20	20	20	20	10	20	20	10	30	20
Scotland	23,540	25,110	24,980	24,950	25,550	26,590	29,120	30,400	30,930	31,810
Wales	40	40	50	40	50	50	40	40	40	40
UK	25,000	26,640	26,380	26,220	26,910	27,910	30,570	31,930	32,390	33,180

B.27 Placed applicants at A level results day: domiciled in Scotland

Selected provider countries: difference between cycle and 2017 cycle (at A level results day)

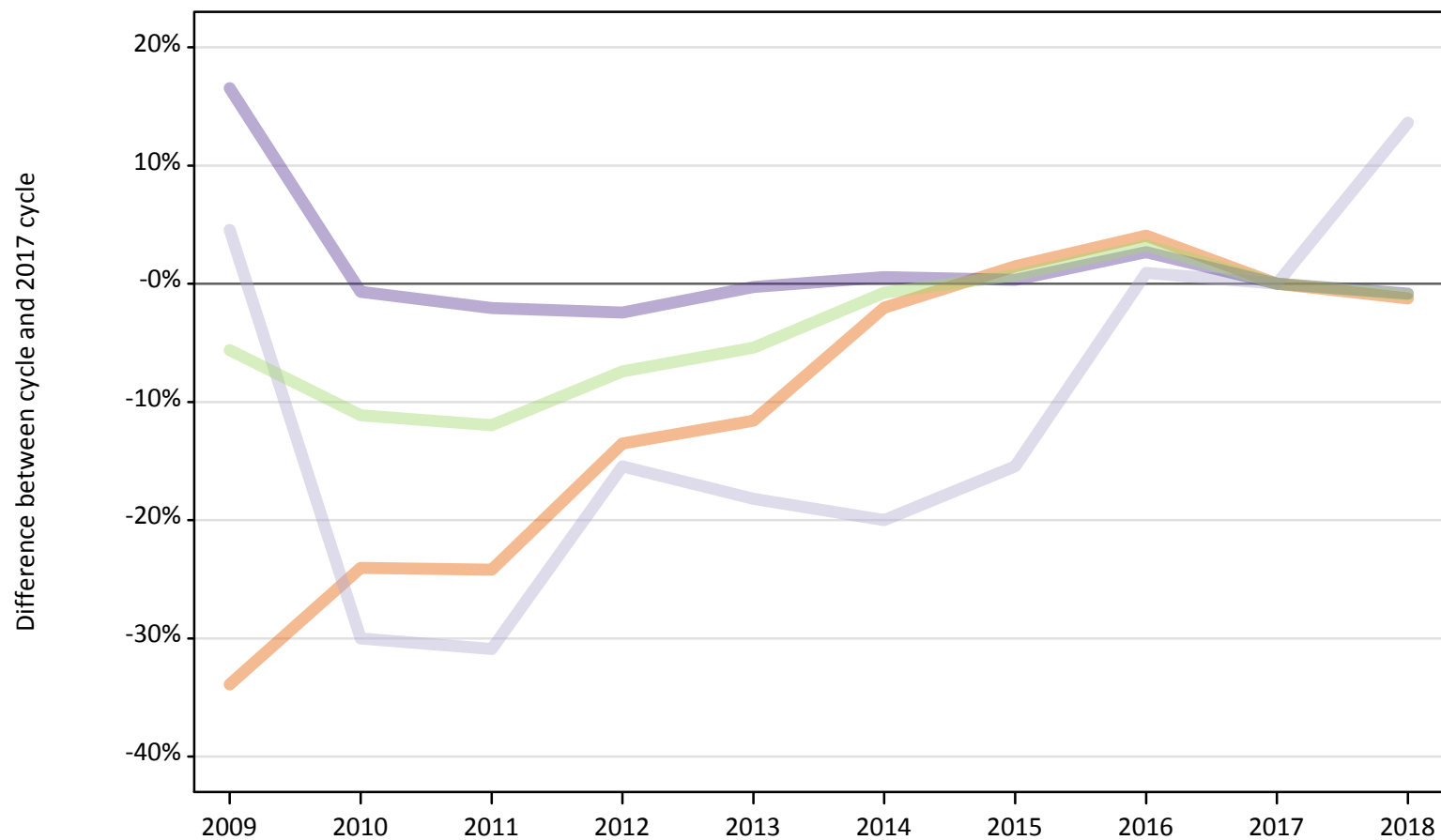
Country of provider	2009	2010	2011	2012	2013	2014	2015	2016	2017	2018
England	2%	6%	-4%	-13%	-6%	-9%	1%	6%	0%	-6%
Northern Ireland	-46%	-36%	-39%	-18%	-57%	-46%	-46%	-57%	0%	-18%
Scotland	-24%	-19%	-19%	-19%	-17%	-14%	-6%	-2%	0%	3%
Wales	-18%	-2%	5%	-5%	23%	9%	-14%	-20%	0%	-16%
UK	-23%	-18%	-19%	-19%	-17%	-14%	-6%	-1%	0%	2%

Note: The percentage change is not recorded in the above table for groups with fewer than 10 placed applicants in that cycle or in the 2017 cycle.

B.28 Placed applicants at A level results day: domiciled in Wales

Selected provider countries: difference between cycle and 2017 cycle (at A level results day)

- England
- Northern Ireland
- Scotland
- Wales
- UK



Note: The percentage change is not plotted in the above chart for groups with fewer than 30 placed applicants in any one cycle.

B.29 Placed applicants at A level results day: domiciled in Wales

Placed applicants by provider country (at A level results day)

Country of provider	2009	2010	2011	2012	2013	2014	2015	2016	2017	2018
England	4,650	5,350	5,340	6,090	6,230	6,900	7,150	7,330	7,040	6,950
Northern Ireland	10	10	10	0	0	10	10	10	10	10
Scotland	120	80	80	90	90	90	90	110	110	130
Wales	10,420	8,880	8,760	8,720	8,920	8,990	8,970	9,180	8,940	8,870
UK	15,200	14,310	14,180	14,910	15,240	15,980	16,220	16,630	16,110	15,960

B.30 Placed applicants at A level results day: domiciled in Wales

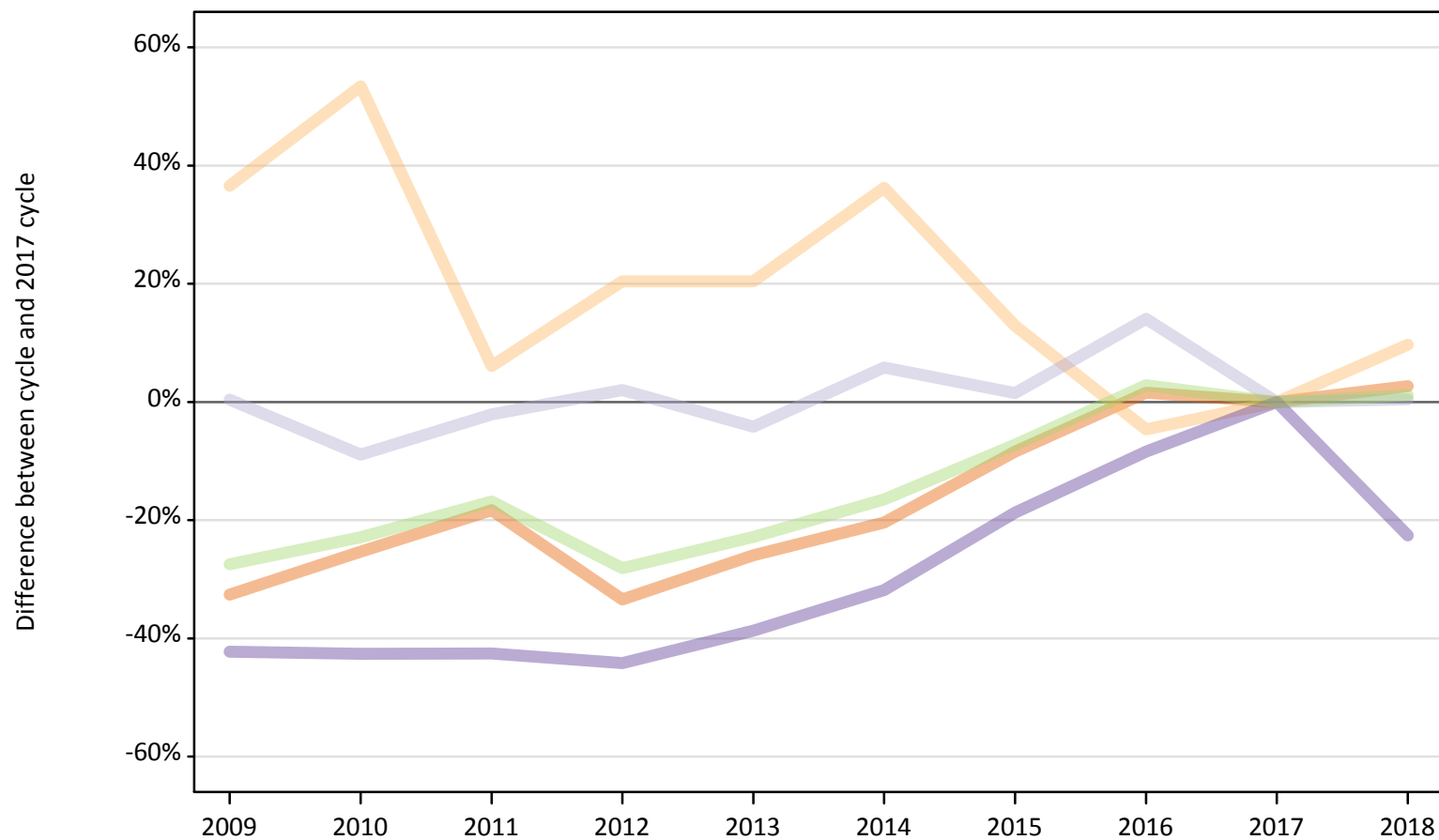
Selected provider countries: difference between cycle and 2017 cycle (at A level results day)

Country of provider	2009	2010	2011	2012	2013	2014	2015	2016	2017	2018
England	-34%	-24%	-24%	-14%	-12%	-2%	1%	4%	0%	-1%
Northern Ireland	-17%	-50%	-50%			-58%	-25%	-50%	0%	-17%
Scotland	5%	-30%	-31%	-15%	-18%	-20%	-15%	1%	0%	14%
Wales	17%	-1%	-2%	-2%	-0%	1%	0%	3%	0%	-1%
UK	-6%	-11%	-12%	-7%	-5%	-1%	1%	3%	0%	-1%

Note: The percentage change is not recorded in the above table for groups with fewer than 10 placed applicants in that cycle or in the 2017 cycle.

B.31 Placed applicants at A level results day: domiciled in EU (excluding UK)
Selected provider countries: difference between cycle and 2017 cycle (at A level results day)

- England
- Northern Ireland
- Scotland
- Wales
- UK



Note: The percentage change is not plotted in the above chart for groups with fewer than 30 placed applicants in any one cycle.

B.32 Placed applicants at A level results day: domiciled in EU (excluding UK)

Placed applicants by provider country (at A level results day)

Country of provider	2009	2010	2011	2012	2013	2014	2015	2016	2017	2018
England	13,950	15,450	16,900	13,780	15,330	16,470	18,960	21,010	20,690	21,240
Northern Ireland	380	430	300	340	340	380	320	270	280	310
Scotland	3,860	3,500	3,760	3,920	3,680	4,070	3,900	4,380	3,840	3,860
Wales	740	730	730	710	780	870	1,040	1,170	1,280	990
UK	18,920	20,110	21,690	18,750	20,130	21,790	24,210	26,830	26,090	26,400

B.33 Placed applicants at A level results day: domiciled in EU (excluding UK)

Selected provider countries: difference between cycle and 2017 cycle (at A level results day)

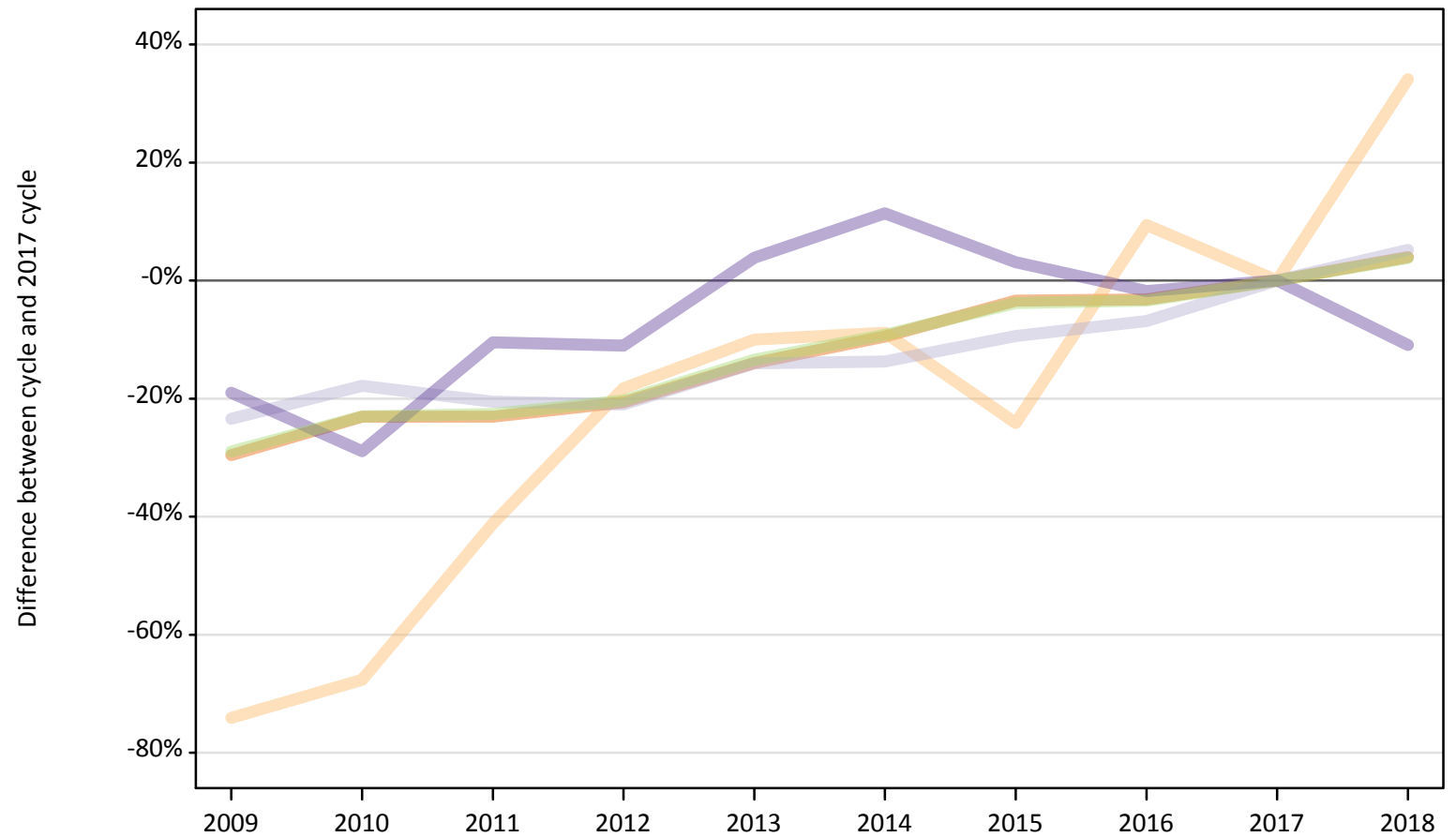
Country of provider	2009	2010	2011	2012	2013	2014	2015	2016	2017	2018
England	-33%	-25%	-18%	-33%	-26%	-20%	-8%	2%	0%	3%
Northern Ireland	37%	53%	6%	20%	20%	36%	13%	-5%	0%	10%
Scotland	0%	-9%	-2%	2%	-4%	6%	1%	14%	0%	0%
Wales	-42%	-43%	-43%	-44%	-39%	-32%	-19%	-8%	0%	-23%
UK	-27%	-23%	-17%	-28%	-23%	-17%	-7%	3%	0%	1%

Note: The percentage change is not recorded in the above table for groups with fewer than 10 placed applicants in that cycle or in the 2017 cycle.

B.34 Placed applicants at A level results day: domiciled in Not EU

Selected provider countries: difference between cycle and 2017 cycle (at A level results day)

- England
- Northern Ireland
- Scotland
- Wales
- UK



Note: The percentage change is not plotted in the above chart for groups with fewer than 30 placed applicants in any one cycle.

B.35 Placed applicants at A level results day: domiciled in Not EU

Placed applicants by provider country (at A level results day)

Country of provider	2009	2010	2011	2012	2013	2014	2015	2016	2017	2018
England	18,830	20,570	20,560	21,220	22,990	24,190	25,820	25,870	26,730	27,790
Northern Ireland	40	60	100	140	150	160	130	190	170	230
Scotland	1,950	2,090	2,020	2,010	2,190	2,200	2,310	2,370	2,550	2,680
Wales	730	640	810	810	940	1,010	930	890	910	810
UK	21,560	23,360	23,490	24,180	26,280	27,560	29,190	29,320	30,350	31,510

B.36 Placed applicants at A level results day: domiciled in Not EU

Selected provider countries: difference between cycle and 2017 cycle (at A level results day)

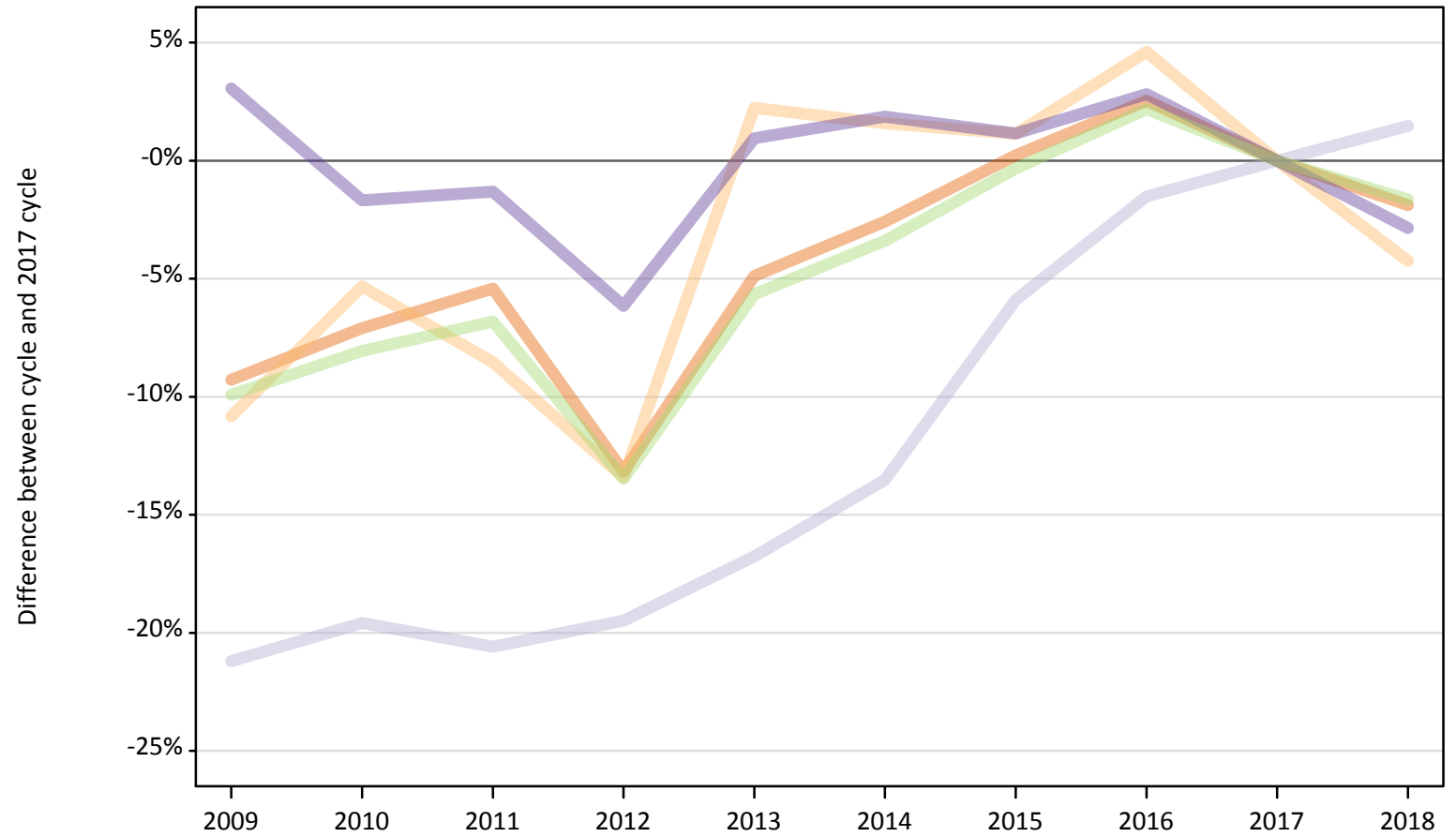
Country of provider	2009	2010	2011	2012	2013	2014	2015	2016	2017	2018
England	-30%	-23%	-23%	-21%	-14%	-9%	-3%	-3%	0%	4%
Northern Ireland	-74%	-68%	-41%	-18%	-10%	-9%	-24%	9%	0%	34%
Scotland	-23%	-18%	-21%	-21%	-14%	-14%	-9%	-7%	0%	5%
Wales	-19%	-29%	-10%	-11%	4%	11%	3%	-2%	0%	-11%
UK	-29%	-23%	-23%	-20%	-13%	-9%	-4%	-3%	0%	4%

Note: The percentage change is not recorded in the above table for groups with fewer than 10 placed applicants in that cycle or in the 2017 cycle.

B.37 Placed applicants at A level results day: domiciled in UK

Selected provider countries: difference between cycle and 2017 cycle (at A level results day)

- England
- Northern Ireland
- Scotland
- Wales
- UK



Note: The percentage change is not plotted in the above chart for groups with fewer than 30 placed applicants in any one cycle.

B.38 Placed applicants at A level results day: domiciled in UK

Placed applicants by provider country (at A level results day)

Country of provider	2009	2010	2011	2012	2013	2014	2015	2016	2017	2018
England	271,070	277,600	282,620	259,470	284,210	291,070	299,480	306,390	298,810	293,180
Northern Ireland	6,580	6,980	6,750	6,390	7,540	7,490	7,460	7,720	7,380	7,060
Scotland	28,630	29,220	28,860	29,260	30,250	31,430	34,200	35,790	36,340	36,870
Wales	17,870	17,050	17,120	16,280	17,510	17,670	17,540	17,830	17,340	16,850
UK	324,160	330,850	335,330	311,390	339,500	347,650	358,680	367,730	359,860	353,960

B.39 Placed applicants at A level results day: domiciled in UK

Selected provider countries: difference between cycle and 2017 cycle (at A level results day)

Country of provider	2009	2010	2011	2012	2013	2014	2015	2016	2017	2018
England	-9%	-7%	-5%	-13%	-5%	-3%	0%	3%	0%	-2%
Northern Ireland	-11%	-5%	-9%	-13%	2%	2%	1%	5%	0%	-4%
Scotland	-21%	-20%	-21%	-19%	-17%	-14%	-6%	-2%	0%	1%
Wales	3%	-2%	-1%	-6%	1%	2%	1%	3%	0%	-3%
UK	-10%	-8%	-7%	-13%	-6%	-3%	-0%	2%	0%	-2%

Note: The percentage change is not recorded in the above table for groups with fewer than 10 placed applicants in that cycle or in the 2017 cycle.