

Daily Clearing Analysis: Age

B7 Nursing analysis at 00:05 on Thursday 23 August 2018 (7 days after A level results day)

CB.1 Placed applicants to nursing by country of domicile and age group, 2018 cycle (7 days after A level results day)

Domicile of applicant	Age group				
	17 and under	18	19	20 to 24	25 and over
England	10	4,410	2,110	4,030	6,920
Northern Ireland	0	320	170	250	220
Scotland	10	550	300	760	1,430
Wales	0	340	180	400	630
UK	20	5,620	2,750	5,430	9,200

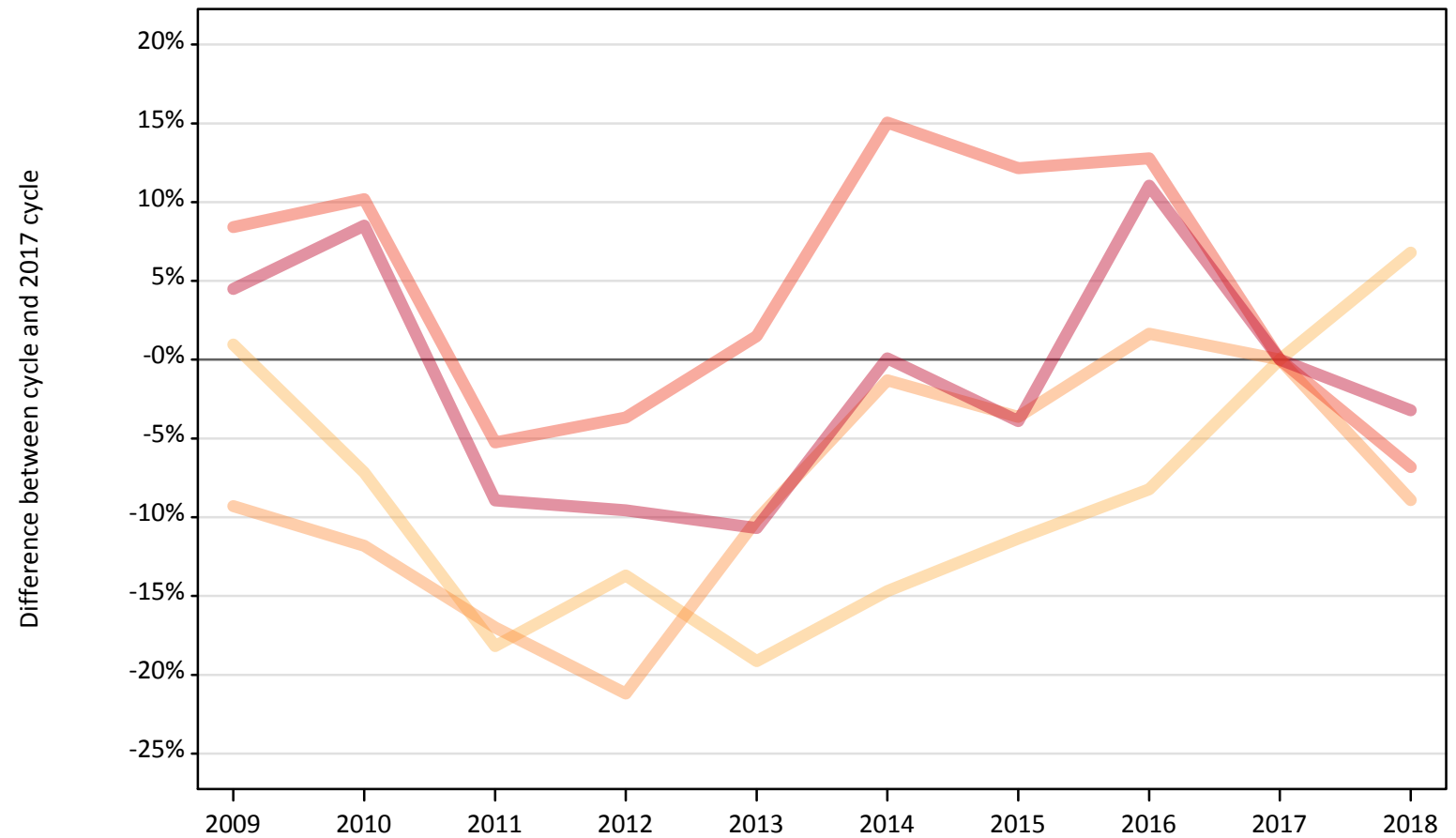
CB.2 Proportion of 18 year old population placed to nursing by country of domicile, 2018 cycle (7 days after A level results day)

Domicile of applicant	Age group	2018
England	18	0.7%
Northern Ireland	18	1.4%
Scotland	18	1.0%
Wales	18	1.0%

CB.3 Placed applicants to nursing from England by age group at 7 days after A level results day

Selected age groups: difference between cycle and 2017 cycle

- 17 and under
- 18
- 19
- 20 to 24
- 25 and over



Note: The percentage change is not plotted in the above chart for groups with fewer than 30 placed applicants in any one cycle.

CB.4 Placed applicants to nursing from England by age group at 7 days after A level results day

All age groups

Domicile of applicant	Age group	2009	2010	2011	2012	2013	2014	2015	2016	2017	2018
England	17 and under	150	80	30	0	0	10	0	0	10	10
	18	4,170	3,840	3,380	3,570	3,340	3,530	3,660	3,790	4,130	4,410
	19	2,100	2,040	1,920	1,820	2,080	2,280	2,230	2,350	2,310	2,110
	20 to 24	4,690	4,770	4,100	4,170	4,390	4,980	4,850	4,880	4,330	4,030
	25 and over	7,470	7,760	6,510	6,460	6,380	7,150	6,870	7,940	7,150	6,920

CB.5 Placed applicants to nursing from England by age group at 7 days after A level results day

Selected age groups: difference between cycle and 2017 cycle

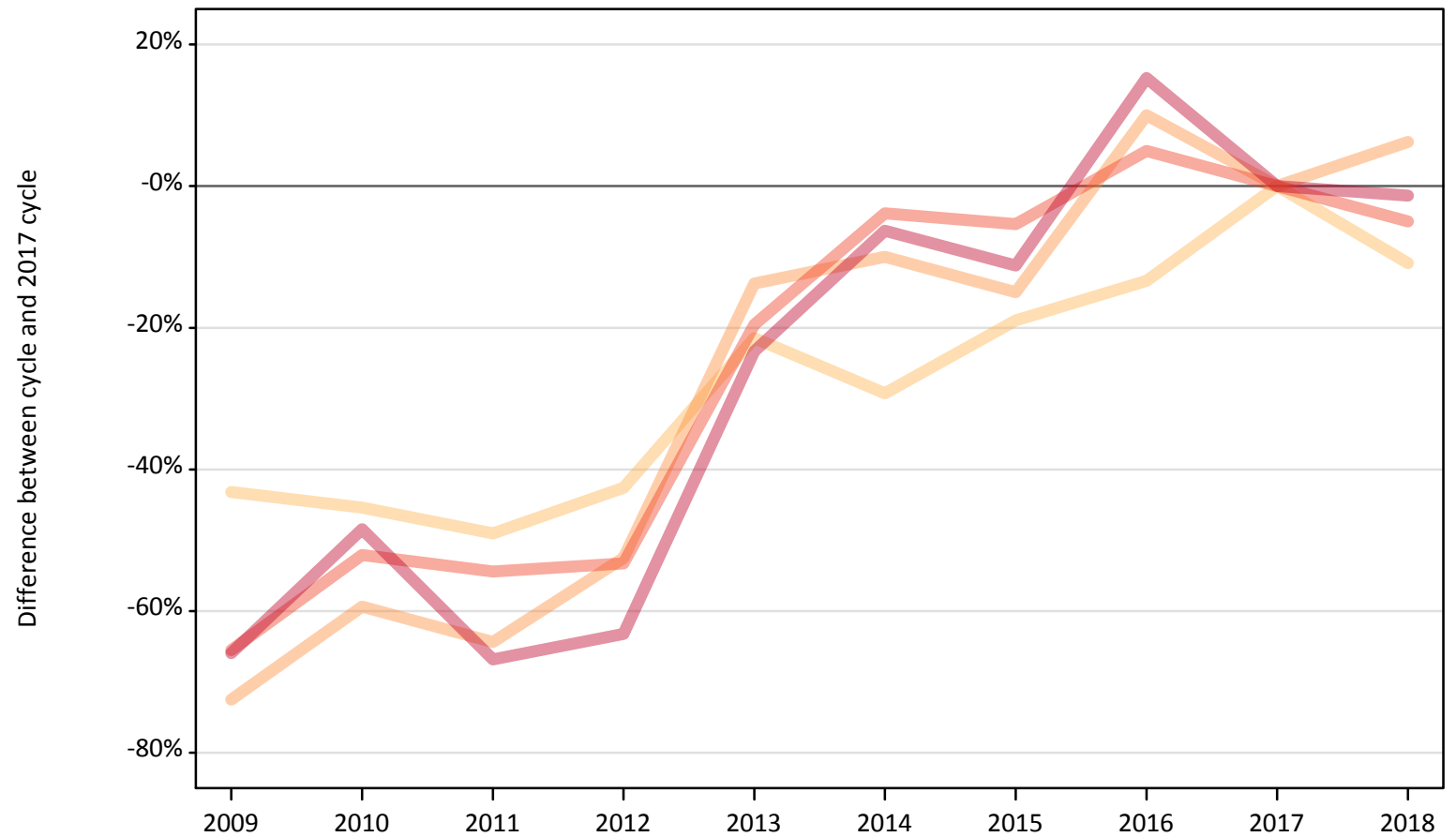
Domicile of applicant	Age group	2009	2010	2011	2012	2013	2014	2015	2016	2017	2018
England	17 and under	2367%	1183%	317%			-17%			0%	-17%
	18	1%	-7%	-18%	-14%	-19%	-15%	-11%	-8%	0%	7%
	19	-9%	-12%	-17%	-21%	-10%	-1%	-4%	2%	0%	-9%
	20 to 24	8%	10%	-5%	-4%	2%	15%	12%	13%	0%	-7%
	25 and over	4%	9%	-9%	-10%	-11%	0%	-4%	11%	0%	-3%

Note: The percentage change is not recorded in the above table for groups with fewer than 10 placed applicants in that cycle or in the 2017 cycle.

CB.6 Placed applicants to nursing from Northern Ireland by age group at 7 days after A level results day

Selected age groups: difference between cycle and 2017 cycle

- 17 and under
- 18
- 19
- 20 to 24
- 25 and over



Note: The percentage change is not plotted in the above chart for groups with fewer than 30 placed applicants in any one cycle.

CB.7 Placed applicants to nursing from Northern Ireland by age group at 7 days after A level results day

All age groups

Domicile of applicant	Age group	2009	2010	2011	2012	2013	2014	2015	2016	2017	2018
Northern Ireland	17 and under	0	0	0	0	0	0	0	0	0	0
	18	200	200	180	210	280	250	290	310	360	320
	19	40	70	60	80	140	140	140	180	160	170
	20 to 24	90	130	120	120	210	250	250	270	260	250
	25 and over	80	120	70	80	170	210	200	260	220	220

CB.8 Placed applicants to nursing from Northern Ireland by age group at 7 days after A level results day

Selected age groups: difference between cycle and 2017 cycle

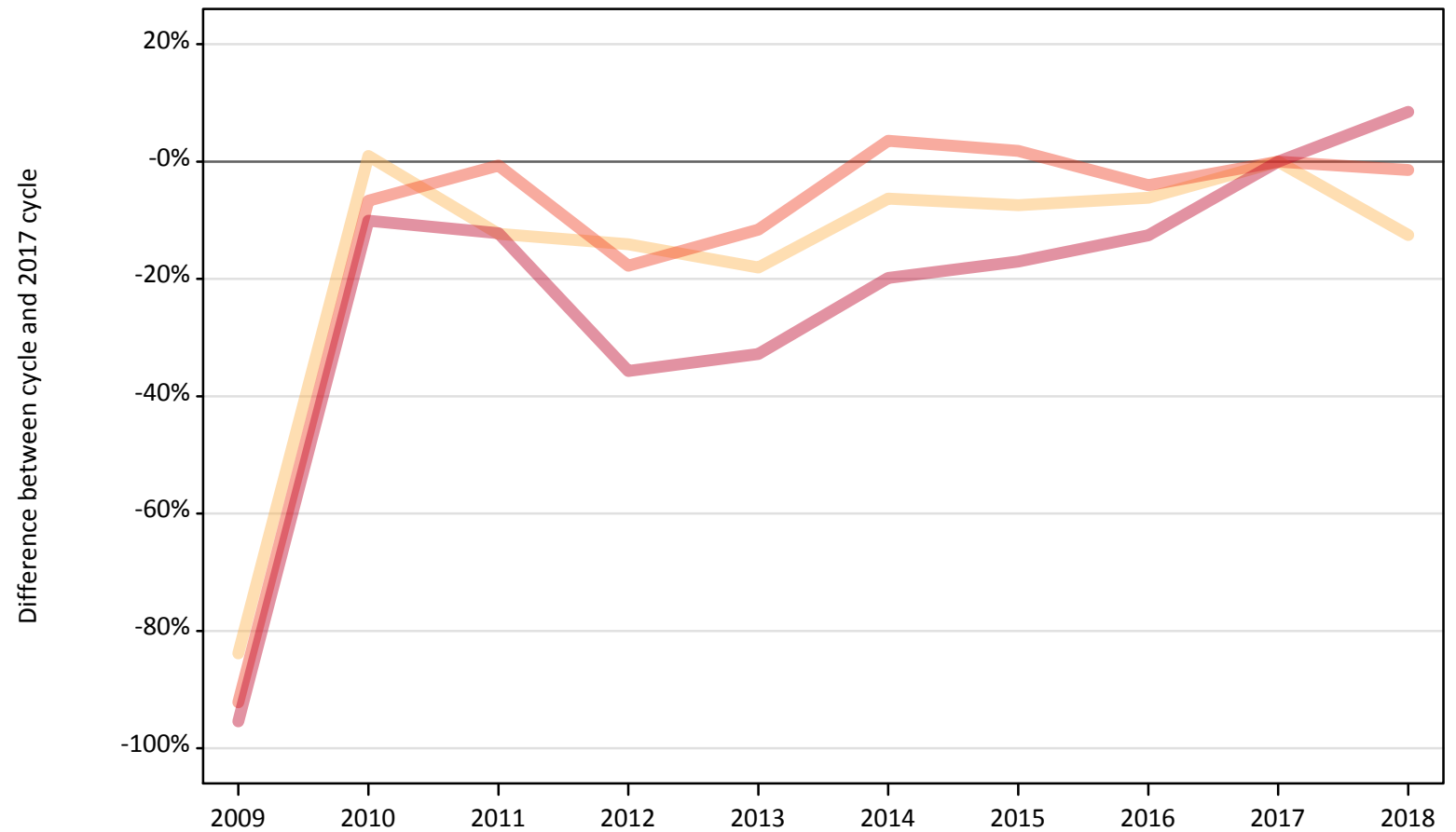
Domicile of applicant	Age group	2009	2010	2011	2012	2013	2014	2015	2016	2017	2018
Northern Ireland	17 and under										
	18	-43%	-45%	-49%	-43%	-21%	-29%	-19%	-13%	0%	-11%
	19	-73%	-59%	-64%	-53%	-14%	-10%	-15%	10%	0%	6%
	20 to 24	-66%	-52%	-54%	-53%	-20%	-4%	-5%	5%	0%	-5%
	25 and over	-66%	-48%	-67%	-63%	-23%	-6%	-11%	15%	0%	-1%

Note: The percentage change is not recorded in the above table for groups with fewer than 10 placed applicants in that cycle or in the 2017 cycle.

CB.9 Placed applicants to nursing from Scotland by age group at 7 days after A level results day

Selected age groups: difference between cycle and 2017 cycle

- 17 and under
- 18
- 19
- 20 to 24
- 25 and over



Note: The percentage change is not plotted in the above chart for groups with fewer than 30 placed applicants in any one cycle.

CB.10 Placed applicants to nursing from Scotland by age group at 7 days after A level results day

All age groups

Domicile of applicant	Age group	2009	2010	2011	2012	2013	2014	2015	2016	2017	2018
Scotland	17 and under	0	40	20	20	20	20	10	20	20	10
	18	100	640	550	540	520	590	590	590	630	550
	19	30	310	290	280	290	320	300	330	300	300
	20 to 24	60	720	760	630	680	790	780	740	770	760
	25 and over	60	1,190	1,160	850	890	1,060	1,090	1,150	1,320	1,430

CB.11 Placed applicants to nursing from Scotland by age group at 7 days after A level results day

Selected age groups: difference between cycle and 2017 cycle

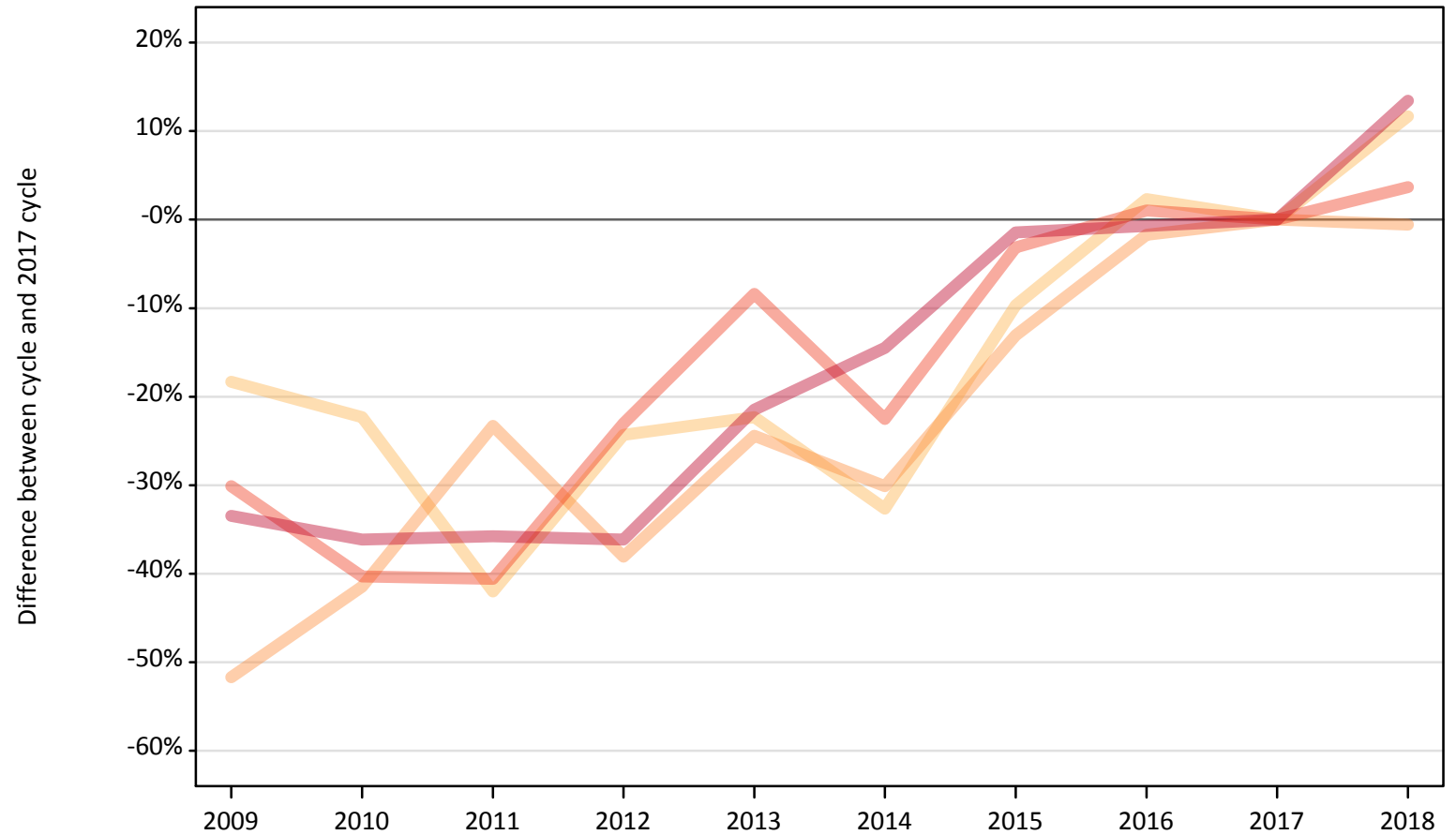
Domicile of applicant	Age group	2009	2010	2011	2012	2013	2014	2015	2016	2017	2018
Scotland	17 and under		95%	10%	5%	-5%	-19%	-43%	-24%	0%	-33%
	18	-84%	1%	-12%	-14%	-18%	-6%	-7%	-6%	0%	-13%
	19	-91%	5%	-2%	-6%	-1%	8%	1%	10%	0%	1%
	20 to 24	-92%	-7%	-1%	-18%	-12%	4%	2%	-4%	0%	-1%
	25 and over	-95%	-10%	-12%	-36%	-33%	-20%	-17%	-13%	0%	8%

Note: The percentage change is not recorded in the above table for groups with fewer than 10 placed applicants in that cycle or in the 2017 cycle.

CB.12 Placed applicants to nursing from Wales by age group at 7 days after A level results day

Selected age groups: difference between cycle and 2017 cycle

- 17 and under
- 18
- 19
- 20 to 24
- 25 and over



Note: The percentage change is not plotted in the above chart for groups with fewer than 30 placed applicants in any one cycle.

CB.13 Placed applicants to nursing from Wales by age group at 7 days after A level results day

All age groups

Domicile of applicant	Age group	2009	2010	2011	2012	2013	2014	2015	2016	2017	2018
Wales	17 and under	0	0	0	0	0	0	0	0	0	0
	18	250	230	170	230	230	200	270	310	300	340
	19	90	100	140	110	130	120	150	170	180	180
	20 to 24	270	230	230	290	350	300	370	390	380	400
	25 and over	370	360	360	360	440	480	550	560	560	630

CB.14 Placed applicants to nursing from Wales by age group at 7 days after A level results day

Selected age groups: difference between cycle and 2017 cycle

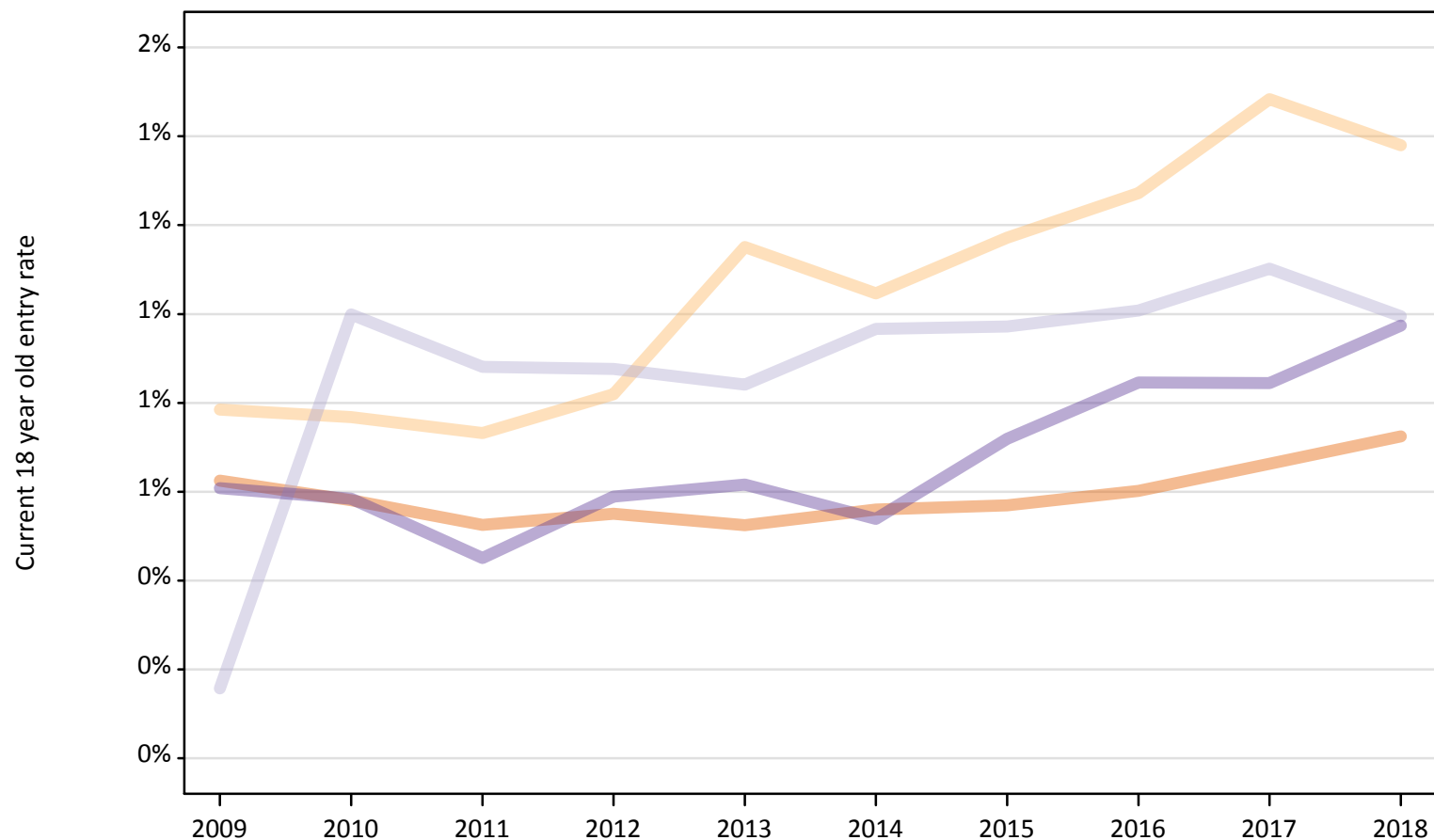
Domicile of applicant	Age group	2009	2010	2011	2012	2013	2014	2015	2016	2017	2018
Wales	17 and under										
	18	-18%	-22%	-42%	-24%	-22%	-33%	-10%	2%	0%	12%
	19	-52%	-41%	-23%	-38%	-24%	-30%	-13%	-2%	0%	-1%
	20 to 24	-30%	-40%	-41%	-23%	-8%	-23%	-3%	1%	0%	4%
	25 and over	-33%	-36%	-36%	-36%	-21%	-14%	-1%	-1%	0%	13%

Note: The percentage change is not recorded in the above table for groups with fewer than 10 placed applicants in that cycle or in the 2017 cycle.

CB.15 Entry rates to nursing for 18 year olds by UK country of domicile: 7 days after A level results day

Placed 18 year old applicants as a proportion of the 18 year old population

- England
- Northern Ireland
- Scotland
- Wales



CB.16 Entry rates to nursing for 18 year olds by UK country of domicile: 7 days after A level results day

Placed 18 year old applicants as a proportion of the 18 year old population

Domicile of applicant	Age group	2009	2010	2011	2012	2013	2014	2015	2016	2017	2018
England	18	0.6%	0.6%	0.5%	0.6%	0.5%	0.6%	0.6%	0.6%	0.7%	0.7%
Northern Ireland	18	0.8%	0.8%	0.7%	0.8%	1.2%	1.0%	1.2%	1.3%	1.5%	1.4%
Scotland	18	0.2%	1.0%	0.9%	0.9%	0.8%	1.0%	1.0%	1.0%	1.1%	1.0%
Wales	18	0.6%	0.6%	0.5%	0.6%	0.6%	0.5%	0.7%	0.8%	0.8%	1.0%