

Daily Clearing Analysis: Age

B7 Nursing analysis at 00:05 on Monday 20 August 2018 (4 days after A level results day)

CB.1 Placed applicants to nursing by country of domicile and age group, 2018 cycle (4 days after A level results day)

Domicile of applicant	Age group				
	17 and under	18	19	20 to 24	25 and over
England	0	4,160	1,990	3,840	6,600
Northern Ireland	0	320	170	240	220
Scotland	10	540	300	740	1,360
Wales	0	320	170	370	600
UK	20	5,350	2,620	5,190	8,780

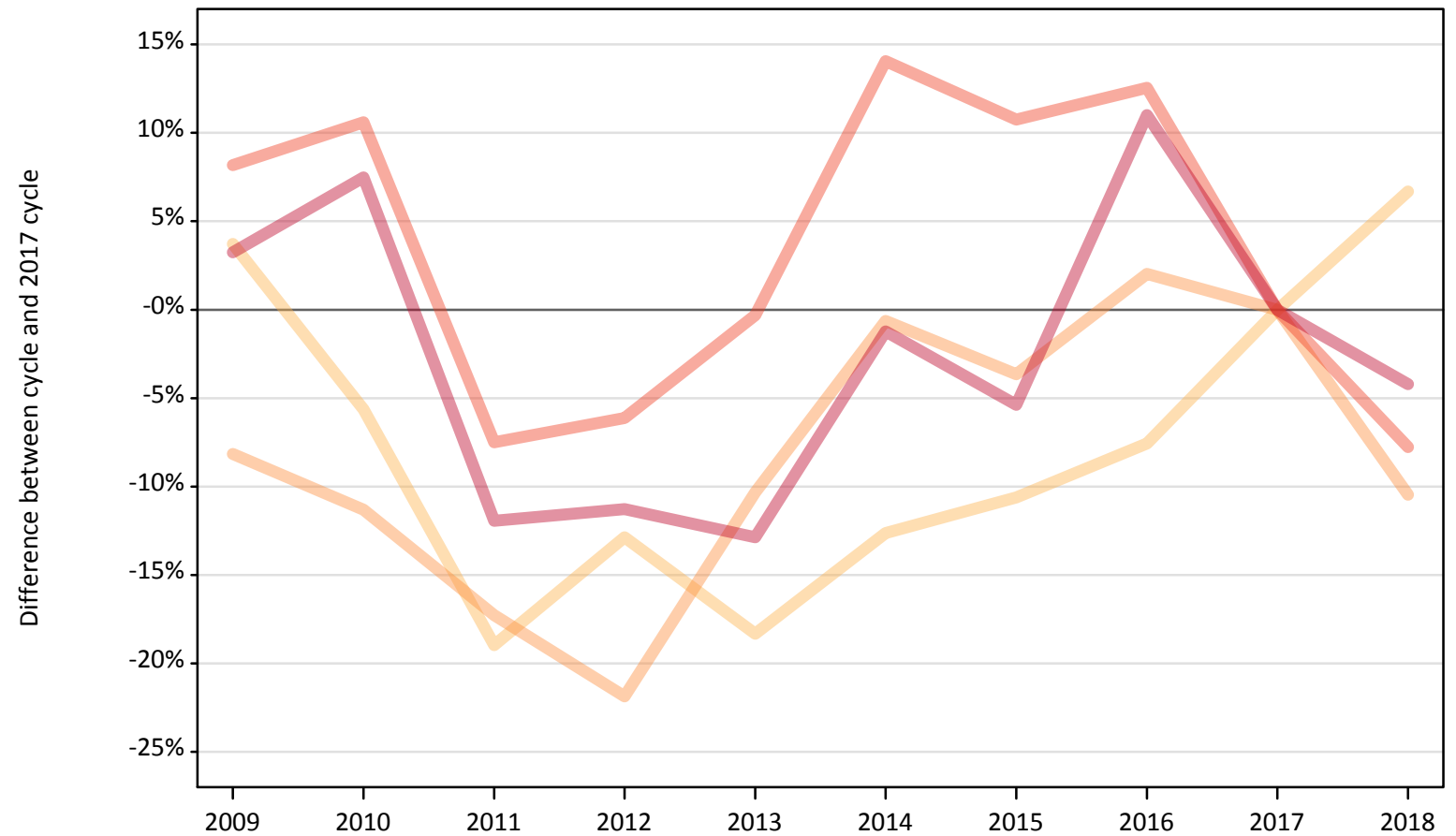
CB.2 Proportion of 18 year old population placed to nursing by country of domicile, 2018 cycle (4 days after A level results day)

Domicile of applicant	Age group	2018
England	18	0.7%
Northern Ireland	18	1.4%
Scotland	18	1.0%
Wales	18	0.9%

CB.3 Placed applicants to nursing from England by age group at 4 days after A level results day

Selected age groups: difference between cycle and 2017 cycle

- 17 and under
- 18
- 19
- 20 to 24
- 25 and over



Note: The percentage change is not plotted in the above chart for groups with fewer than 30 placed applicants in any one cycle.

CB.4 Placed applicants to nursing from England by age group at 4 days after A level results day

All age groups

Domicile of applicant	Age group	2009	2010	2011	2012	2013	2014	2015	2016	2017	2018
England	17 and under	140	70	20	0	0	10	0	0	10	0
	18	4,050	3,680	3,160	3,400	3,190	3,410	3,490	3,610	3,900	4,160
	19	2,040	1,970	1,840	1,730	1,990	2,200	2,140	2,260	2,220	1,990
	20 to 24	4,500	4,600	3,850	3,910	4,150	4,750	4,610	4,680	4,160	3,840
	25 and over	7,110	7,400	6,070	6,110	6,000	6,800	6,520	7,650	6,890	6,600

CB.5 Placed applicants to nursing from England by age group at 4 days after A level results day

Selected age groups: difference between cycle and 2017 cycle

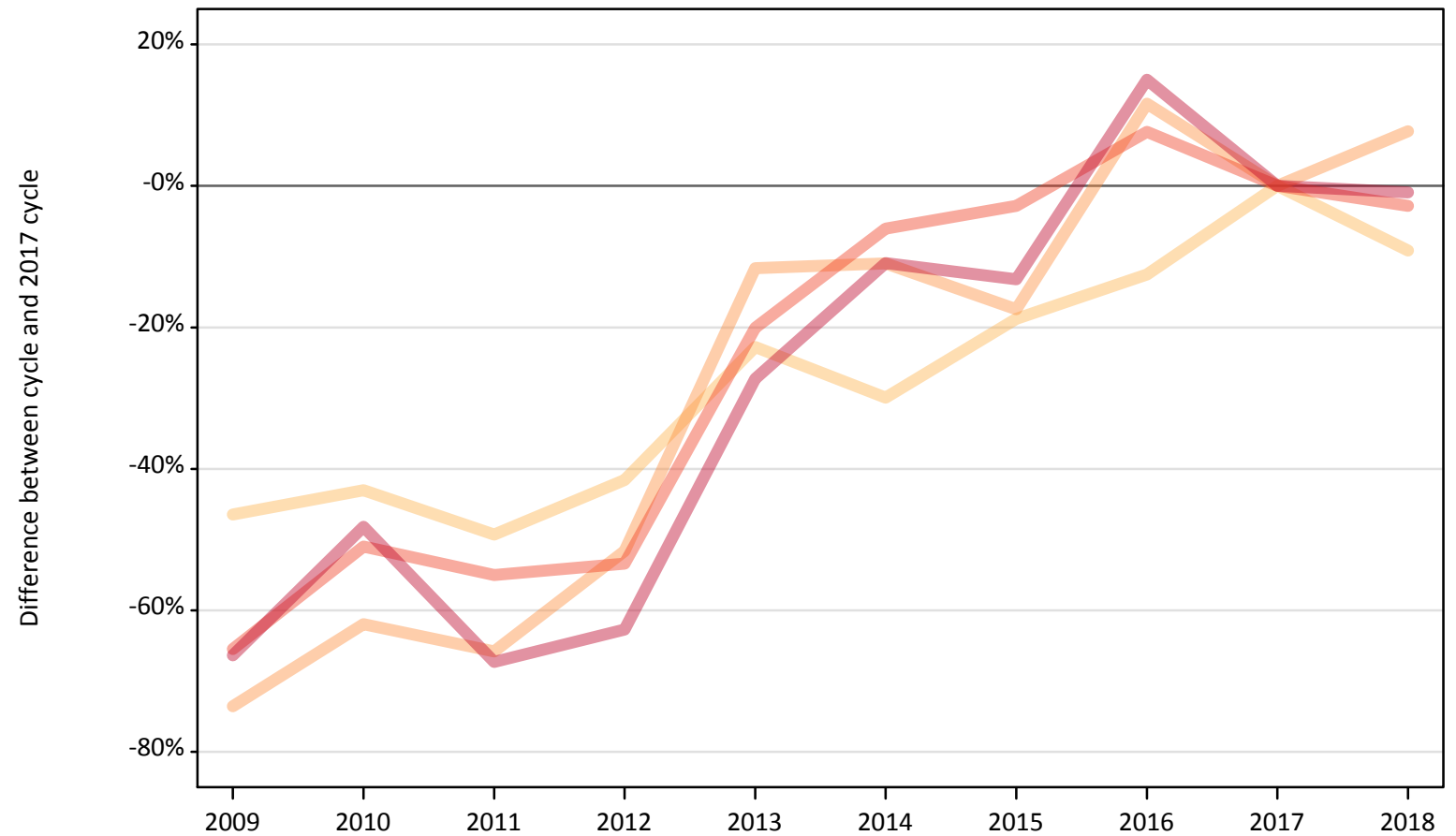
Domicile of applicant	Age group	2009	2010	2011	2012	2013	2014	2015	2016	2017	2018
England	17 and under	2267%	1117%	300%			0%			0%	
	18	4%	-6%	-19%	-13%	-18%	-13%	-11%	-8%	0%	7%
	19	-8%	-11%	-17%	-22%	-10%	-1%	-4%	2%	0%	-10%
	20 to 24	8%	11%	-7%	-6%	-0%	14%	11%	13%	0%	-8%
	25 and over	3%	7%	-12%	-11%	-13%	-1%	-5%	11%	0%	-4%

Note: The percentage change is not recorded in the above table for groups with fewer than 10 placed applicants in that cycle or in the 2017 cycle.

CB.6 Placed applicants to nursing from Northern Ireland by age group at 4 days after A level results day

Selected age groups: difference between cycle and 2017 cycle

- 17 and under
- 18
- 19
- 20 to 24
- 25 and over



Note: The percentage change is not plotted in the above chart for groups with fewer than 30 placed applicants in any one cycle.

CB.7 Placed applicants to nursing from Northern Ireland by age group at 4 days after A level results day

All age groups

Domicile of applicant	Age group	2009	2010	2011	2012	2013	2014	2015	2016	2017	2018
Northern Ireland	17 and under	0	0	0	0	0	0	0	0	0	0
	18	190	200	180	210	270	250	290	310	350	320
	19	40	60	50	80	140	140	130	170	160	170
	20 to 24	90	120	110	120	200	230	240	270	250	240
	25 and over	70	110	70	80	160	200	190	250	220	220

CB.8 Placed applicants to nursing from Northern Ireland by age group at 4 days after A level results day

Selected age groups: difference between cycle and 2017 cycle

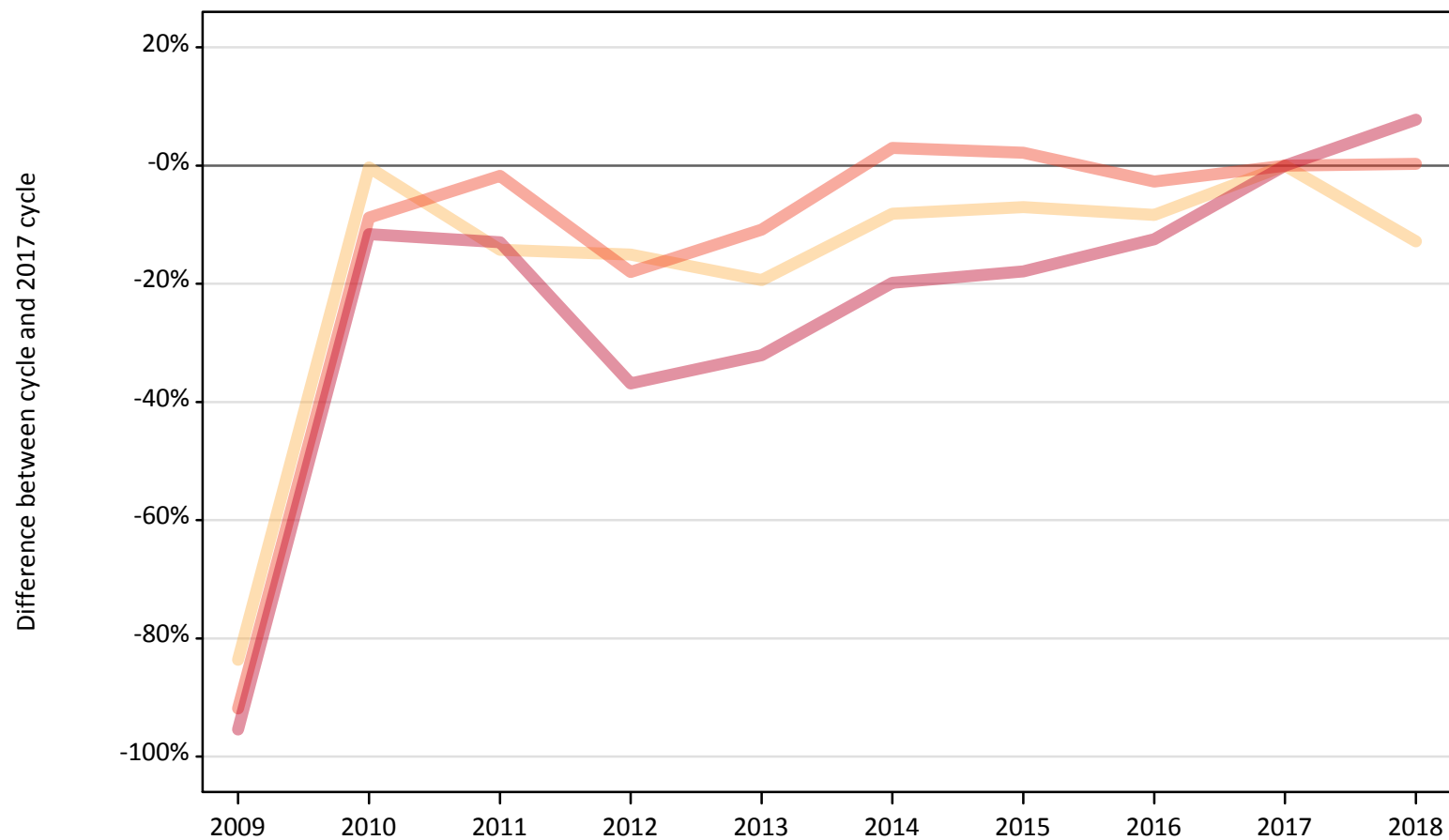
Domicile of applicant	Age group	2009	2010	2011	2012	2013	2014	2015	2016	2017	2018
Northern Ireland	17 and under										
	18	-46%	-43%	-49%	-42%	-23%	-30%	-19%	-13%	0%	-9%
	19	-74%	-62%	-66%	-52%	-12%	-11%	-17%	12%	0%	8%
	20 to 24	-65%	-51%	-55%	-53%	-20%	-6%	-3%	8%	0%	-3%
	25 and over	-66%	-48%	-67%	-63%	-27%	-11%	-13%	15%	0%	-1%

Note: The percentage change is not recorded in the above table for groups with fewer than 10 placed applicants in that cycle or in the 2017 cycle.

CB.9 Placed applicants to nursing from Scotland by age group at 4 days after A level results day

Selected age groups: difference between cycle and 2017 cycle

- 17 and under
- 18
- 19
- 20 to 24
- 25 and over



Note: The percentage change is not plotted in the above chart for groups with fewer than 30 placed applicants in any one cycle.

CB.10 Placed applicants to nursing from Scotland by age group at 4 days after A level results day

All age groups

Domicile of applicant	Age group	2009	2010	2011	2012	2013	2014	2015	2016	2017	2018
Scotland	17 and under	0	40	20	20	20	20	10	20	20	10
	18	100	620	540	530	500	570	580	570	620	540
	19	30	290	280	270	290	310	300	320	290	300
	20 to 24	60	670	730	610	660	760	750	720	740	740
	25 and over	60	1,120	1,100	800	860	1,020	1,040	1,110	1,270	1,360

CB.11 Placed applicants to nursing from Scotland by age group at 4 days after A level results day

Selected age groups: difference between cycle and 2017 cycle

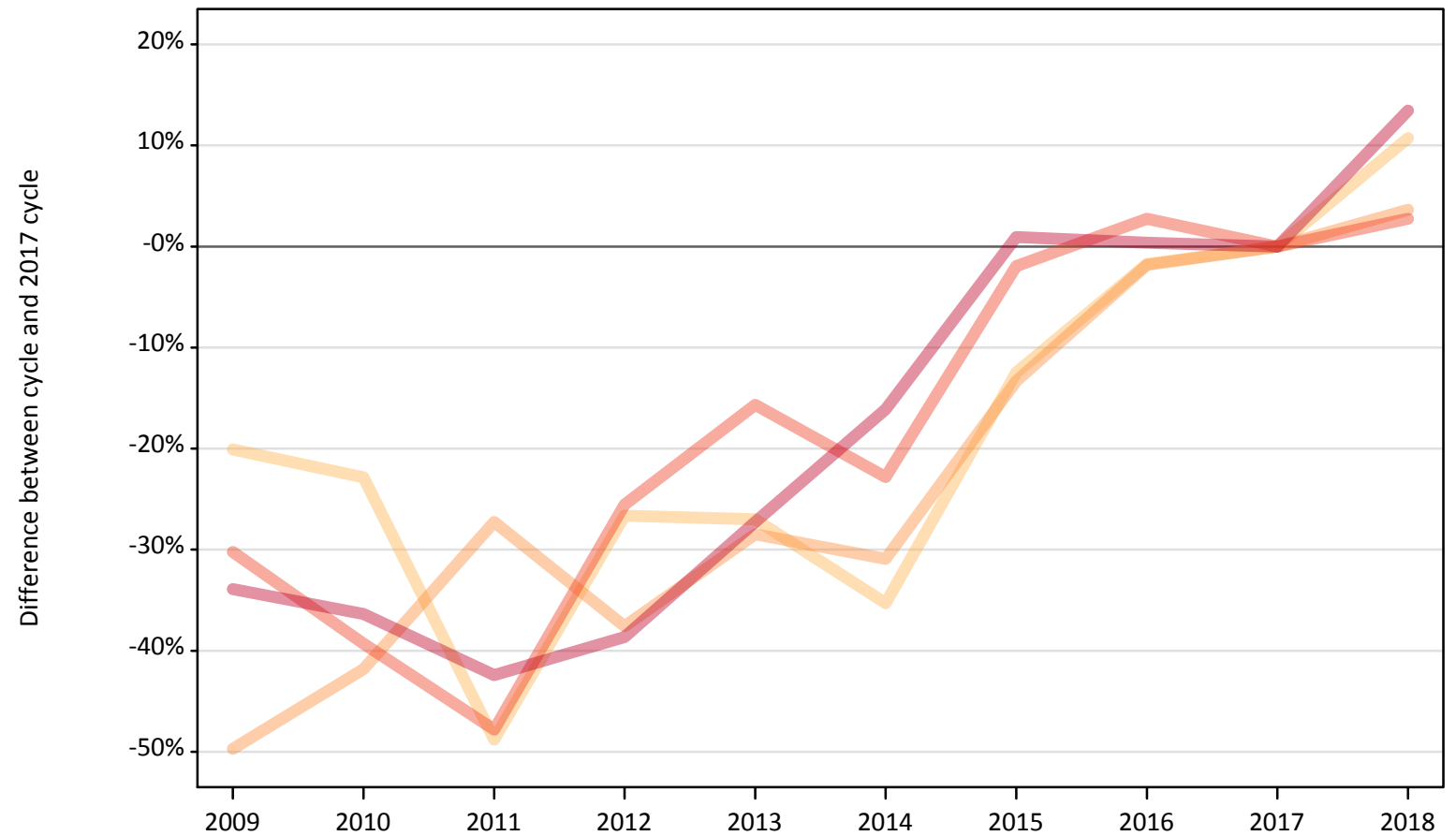
Domicile of applicant	Age group	2009	2010	2011	2012	2013	2014	2015	2016	2017	2018
Scotland	17 and under		105%	21%	5%	0%	-11%	-37%	-16%	0%	-26%
	18	-84%	-0%	-14%	-15%	-19%	-8%	-7%	-8%	0%	-13%
	19	-91%	-0%	-3%	-7%	0%	8%	2%	9%	0%	2%
	20 to 24	-92%	-9%	-2%	-18%	-11%	3%	2%	-3%	0%	0%
	25 and over	-95%	-12%	-13%	-37%	-32%	-20%	-18%	-12%	0%	8%

Note: The percentage change is not recorded in the above table for groups with fewer than 10 placed applicants in that cycle or in the 2017 cycle.

CB.12 Placed applicants to nursing from Wales by age group at 4 days after A level results day

Selected age groups: difference between cycle and 2017 cycle

- 17 and under
- 18
- 19
- 20 to 24
- 25 and over



Note: The percentage change is not plotted in the above chart for groups with fewer than 30 placed applicants in any one cycle.

CB.13 Placed applicants to nursing from Wales by age group at 4 days after A level results day

All age groups

Domicile of applicant	Age group	2009	2010	2011	2012	2013	2014	2015	2016	2017	2018
Wales	17 and under	0	0	0	0	0	0	0	0	0	0
	18	230	220	150	210	210	190	250	280	290	320
	19	80	100	120	100	120	110	140	160	170	170
	20 to 24	250	220	190	270	310	280	360	370	360	370
	25 and over	350	340	300	320	380	440	530	530	530	600

CB.14 Placed applicants to nursing from Wales by age group at 4 days after A level results day

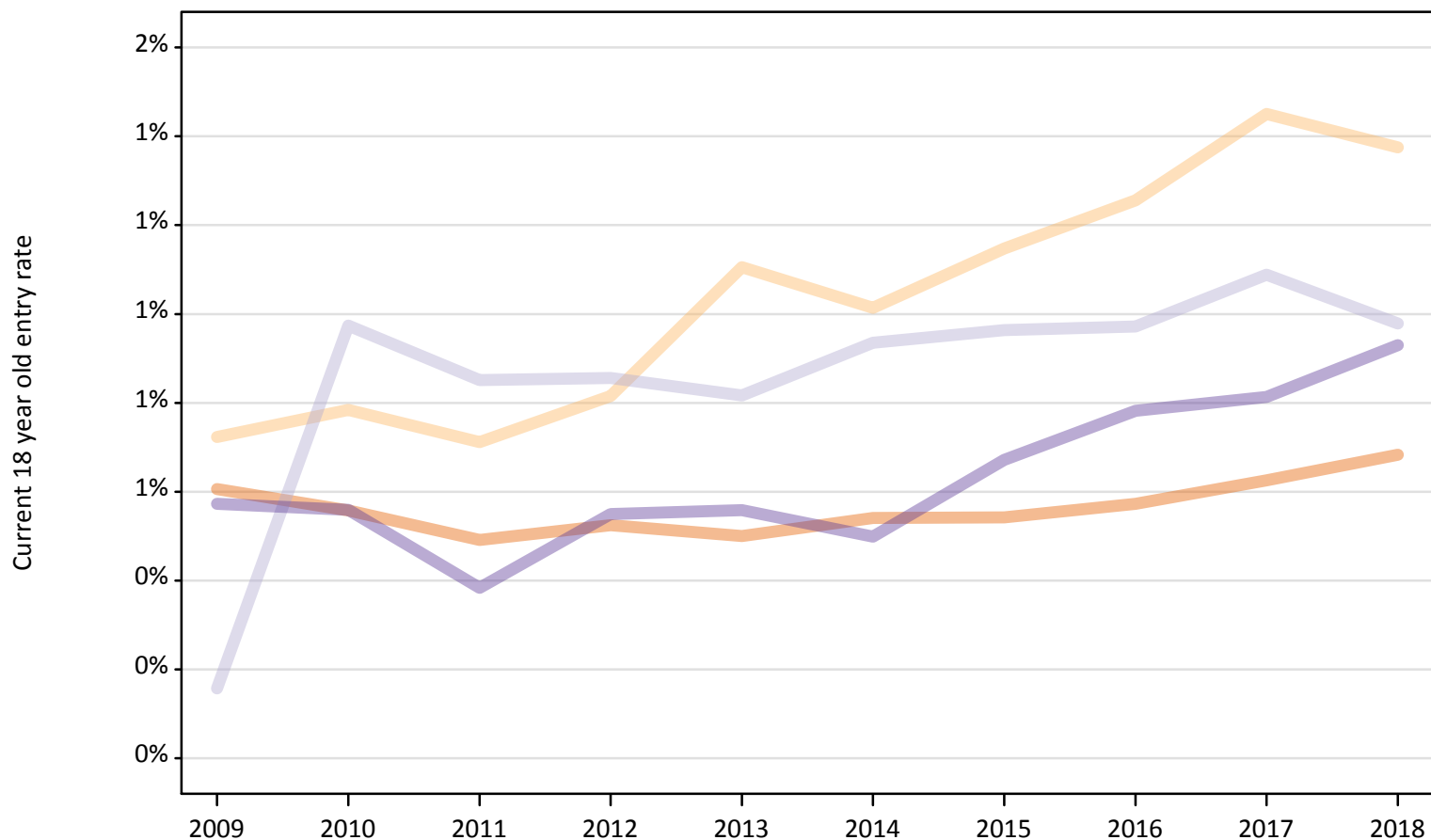
Selected age groups: difference between cycle and 2017 cycle

Domicile of applicant	Age group	2009	2010	2011	2012	2013	2014	2015	2016	2017	2018
Wales	17 and under										
	18	-20%	-23%	-49%	-27%	-27%	-35%	-12%	-2%	0%	11%
	19	-50%	-42%	-27%	-38%	-28%	-31%	-13%	-2%	0%	4%
	20 to 24	-30%	-39%	-48%	-26%	-16%	-23%	-2%	3%	0%	3%
	25 and over	-34%	-36%	-42%	-39%	-27%	-16%	1%	0%	0%	13%

Note: The percentage change is not recorded in the above table for groups with fewer than 10 placed applicants in that cycle or in the 2017 cycle.

CB.15 Entry rates to nursing for 18 year olds by UK country of domicile: 4 days after A level results day

Placed 18 year old applicants as a proportion of the 18 year old population



CB.16 Entry rates to nursing for 18 year olds by UK country of domicile: 4 days after A level results day

Placed 18 year old applicants as a proportion of the 18 year old population

Domicile of applicant	Age group	2009	2010	2011	2012	2013	2014	2015	2016	2017	2018
England	18	0.6%	0.6%	0.5%	0.5%	0.5%	0.5%	0.5%	0.6%	0.6%	0.7%
Northern Ireland	18	0.7%	0.8%	0.7%	0.8%	1.1%	1.0%	1.1%	1.3%	1.5%	1.4%
Scotland	18	0.2%	1.0%	0.9%	0.9%	0.8%	0.9%	1.0%	1.0%	1.1%	1.0%
Wales	18	0.6%	0.6%	0.4%	0.5%	0.6%	0.5%	0.7%	0.8%	0.8%	0.9%