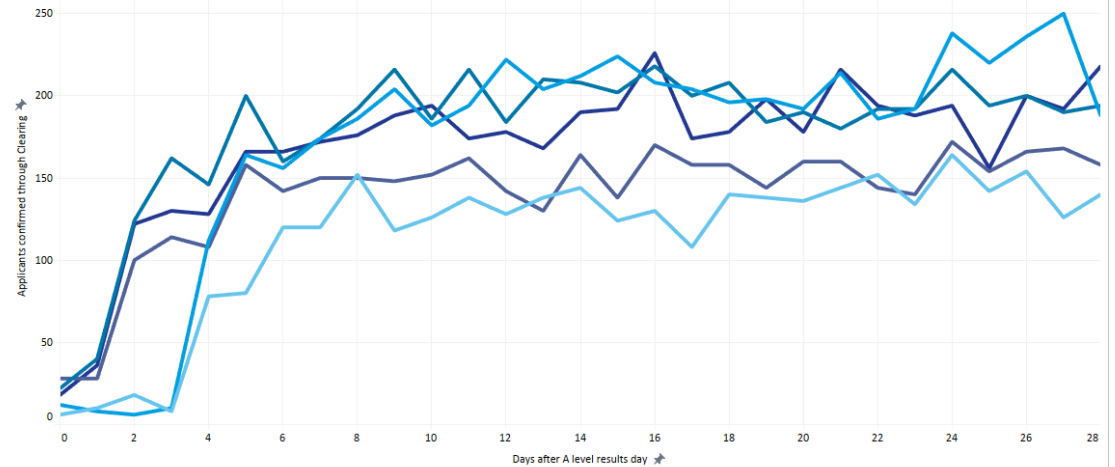


Clearing Insights Tool – March 2019

Recruitment & Lost Applicants:

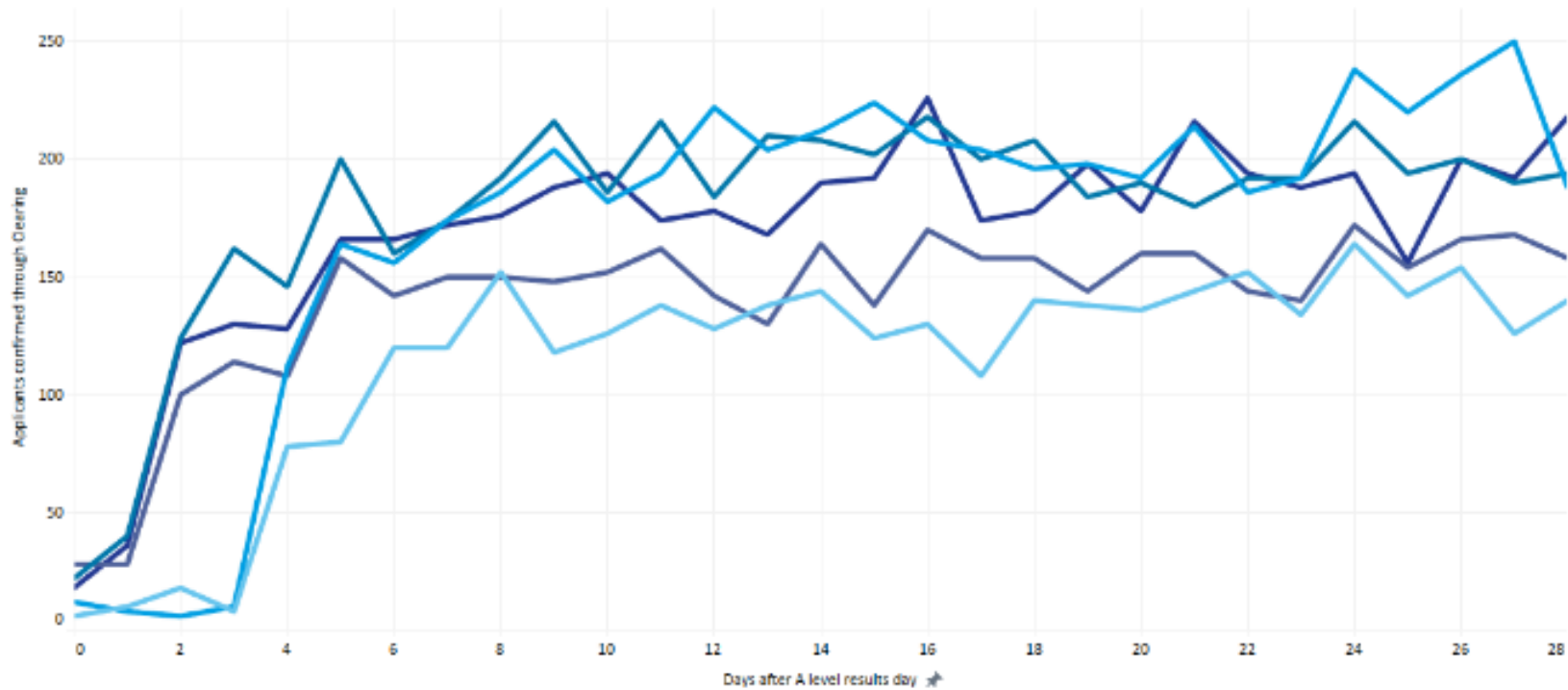
Recruitment

The selections on the right mean that this chart is showing the number of applicants who were confirmed at You every day throughout Clearing. The different coloured lines are showing a comparison between Years. The chart is filtered so that all lines are showing applicants who applied for any subject, from any domicile, and applied through any scheme.



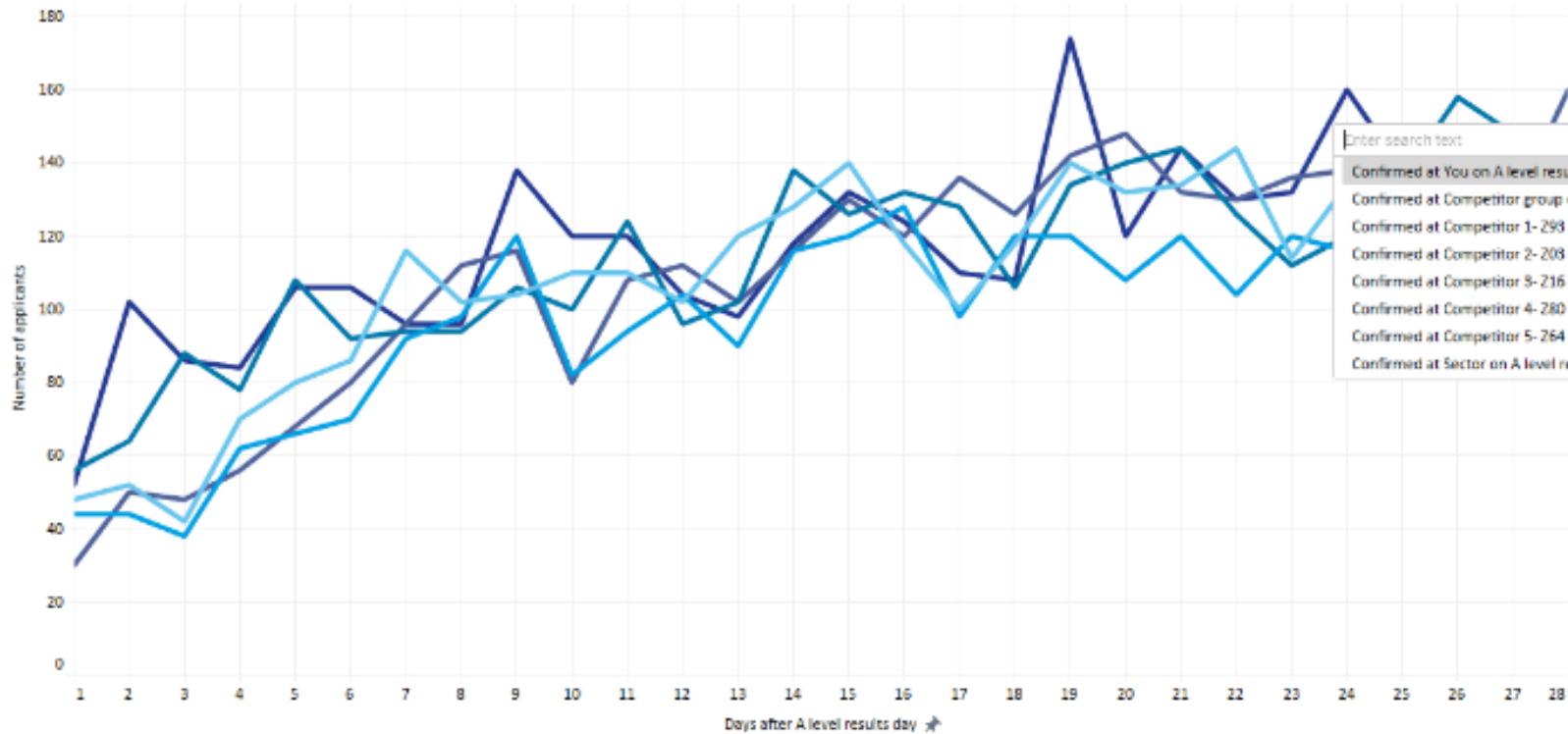
Recruitment

The selections on the right mean that this chart is showing the number of applicants who were confirmed at You every day throughout Clearing. The different coloured lines are showing a comparison between Years. The chart is filtered so that all lines are showing applicants who applied for any subject, from any domicile, and applied through any scheme.



Lost applicants

The selections on the right mean that this chart is showing the number of applicants who were confirmed at You on A level results day, through either their firm or insurance choice and at a course in any subject group, but who were no longer confirmed there and had any new status by the day shown. The different coloured lines are showing a comparison between Years.



How would you like to see the data?

Chart

What would you like to compare?

Years

Selections to filter to

Confirmed at You on A level re...

Enter search text:

- Confirmed at You on A level results day
- Confirmed at Competitor group on A level results day
- Confirmed at Competitor 1- 293 Sample Provider on A level results day
- Confirmed at Competitor 2- 208 Sample Provider on A level results day
- Confirmed at Competitor 3- 216 Sample Provider on A level results day
- Confirmed at Competitor 4- 280 Sample Provider on A level results day
- Confirmed at Competitor 5- 264 Sample Provider on A level results day
- Confirmed at Sector on A level results day

Use the legend below to select one or more categories to show on the chart.

- 2013
- 2014
- 2015
- 2016
- 2017

Net gains:

Net gains

Your total gains and losses over the last 5 years

	2013	2014	2015	2016	2017
Gain	56	58	60	48	90
Loss	190	192	124	160	142
Net	-74	-74	-64	-112	-52

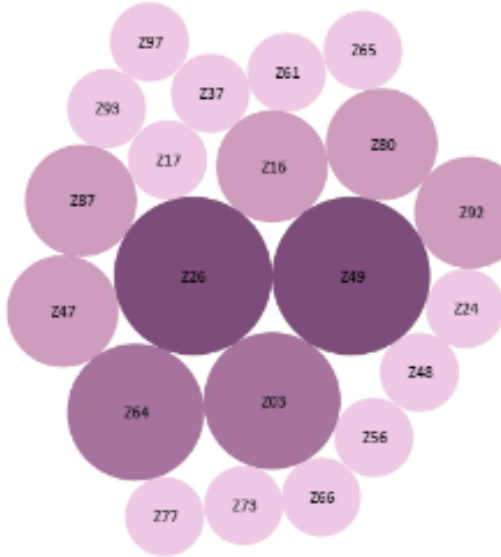
Click the bubbles to the right to see a yearly comparison for that provider.

		2013	2014	2015	2016	2017
Z02 - Sample Provider	Gain		2		2	
	Loss		0		0	
	Net		2		2	
Z03 - Sample Provider	Gain	0		2	0	2
	Loss		2		0	2
	Net	-2		2	-2	-1
Z11 - Sample Provider	Gain	0	0	2		2
	Loss		2		0	0
	Net	-2	-2	2		2
Z12 - Sample Provider	Gain					2
	Loss					0
	Net					2
Z13 - Sample Provider	Gain		2	4		
	Loss		0	2		
	Net		2	2		
Z14 - Sample Provider	Gain	2				
	Loss		2			

You

90

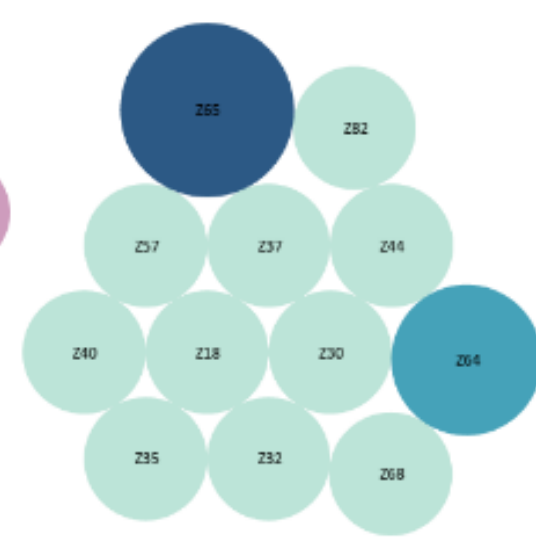
For the applicants who were confirmed with you on A level results day 2017, where were they ultimately confirmed on Day 28? (Top 10 providers)



Competitor group

1,730

For the applicants who were ultimately confirmed with you on Day 28, where were they confirmed on A level results day 2017? (Top 10 providers)



Year: 2017

Statistic: 2013, 2014, 2015, 2016, 2017

Choose a year to view: 2017

A level results day acceptance route: All

Day 28 acceptance route: All

Subject group of place at you: All subjects

Number of providers to show: 10

Both the size and colour of the bubbles indicate the number of applicants who fall into that bubble (lost or gained). Larger and darker bubbles indicate more applicants while smaller and lighter bubbles indicate fewer applicants.

Net gains

Your total gains and losses over the last 5 years

	2013	2014	2015	2016	2017
Gain	56	58	60	48	90
Loss	190	192	124	160	142
Net	-74	-74	-64	-112	-52

Click the bubbles to the right to see a yearly comparison for that provider.

		2013	2014	2015	2016	2017
Z02 - Sample Provider	Gain		2		2	
	Loss		0		0	
	Net		2		2	
Z03 - Sample Provider	Gain	0		2	0	2
	Loss		2		0	2
	Net	-2		2	-2	-1
Z11 - Sample Provider	Gain	0	0	2		2
	Loss		2		0	0
	Net	-2	-2	2		2
Z12 - Sample Provider	Gain					2
	Loss					0
	Net					2
Z13 - Sample Provider	Gain		2	4		
	Loss		0	2		
	Net		2	2		
Z14 - Sample Provider	Gain	2				
	Loss		2			

You

90

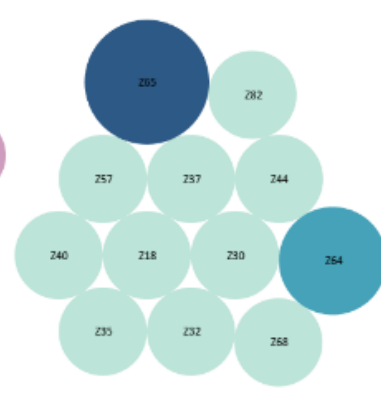
For the applicants who were confirmed with you on A level results day 2017, where were they ultimately confirmed on Day 28? (Top 10 providers)



Competitor group

1,730

For the applicants who were ultimately confirmed with you on Day 28, where were they confirmed on A level results day 2017? (Top 10 providers)



Year: 2017

Statistic: Gain

Choose a year to view: 2017

A level results day acceptance route: All

Day 28 acceptance route: All

Subject group of place at you: All subjects

Filter search text

- All subjects
- Subject group 1
- Subject group 2
- Subject group 3
- Subject group 4
- Subject group 5

bubbles indicate more applicants while smaller and lighter bubbles indicate fewer applicants.

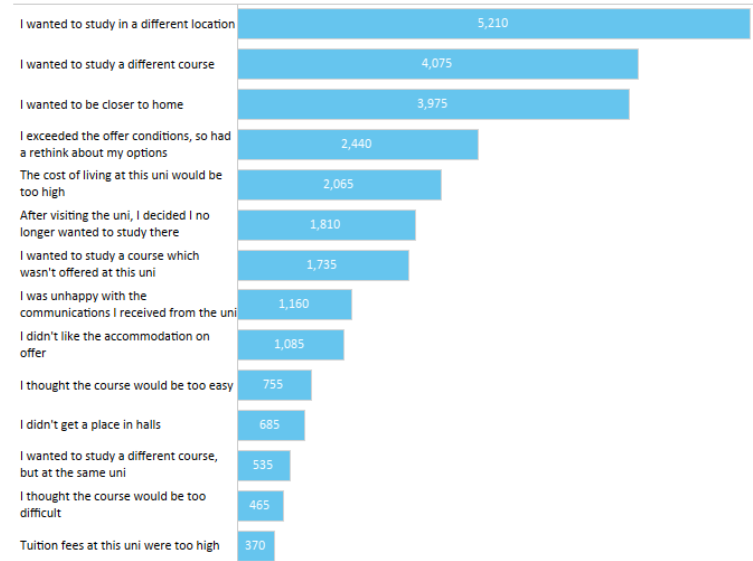
Survey Results

Survey results (Sector-wide)

Choose question to look at:

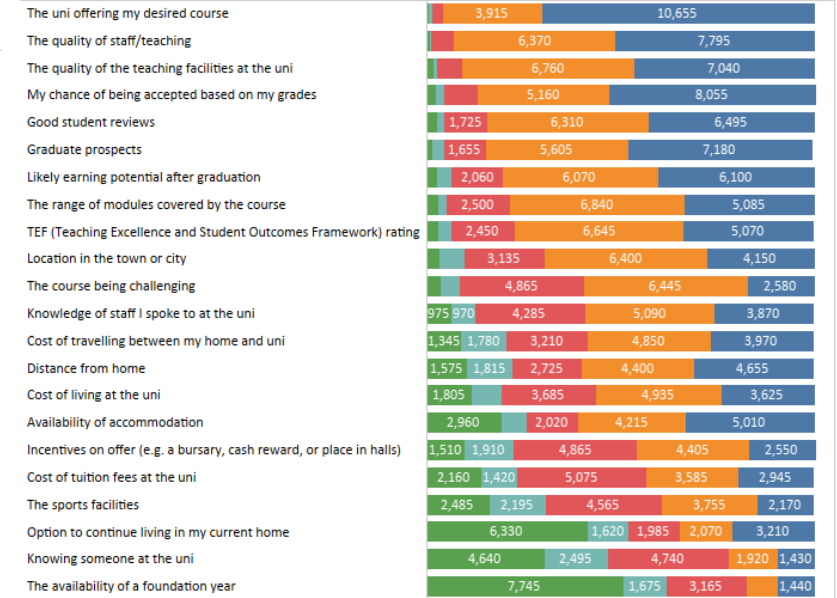
Why did you change your mind?

Why did you change your mind about the university or college you were originally placed at? Please select all that apply.



How important were the following factors when choosing your place in Clearing?

Bars are stacked from 'Not at all important' to 'Very important'

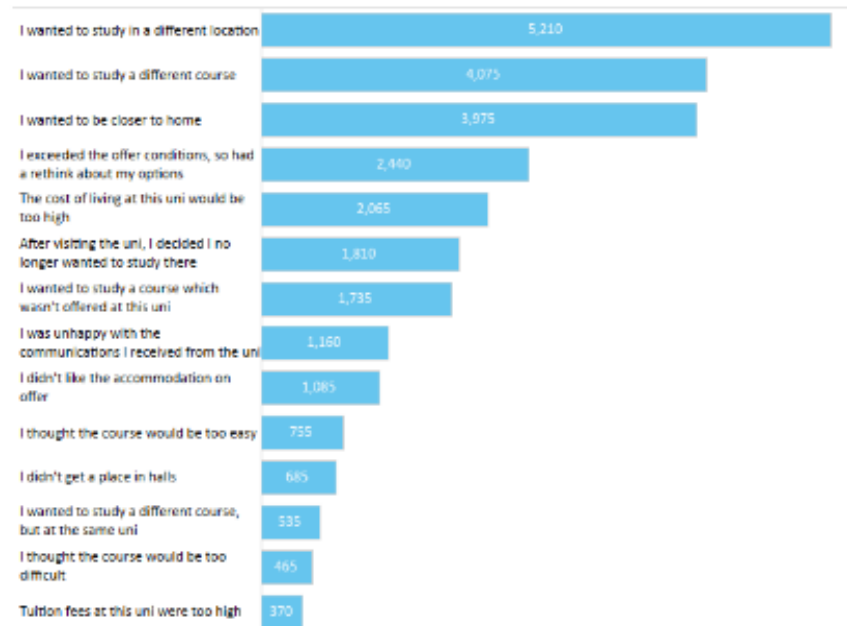


Survey results (Sector-wide)

Choose question to look at:

Why did you change your mind?

Why did you change your mind about the university or college you were originally placed at? Please select all that apply.

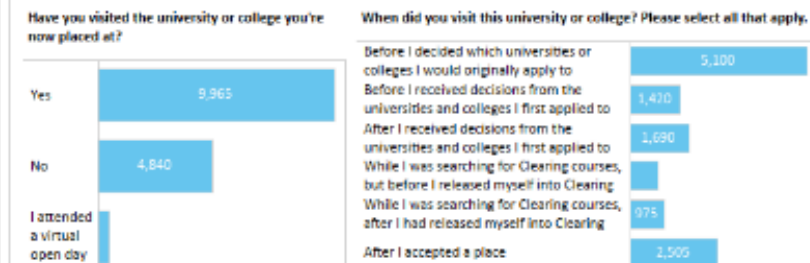
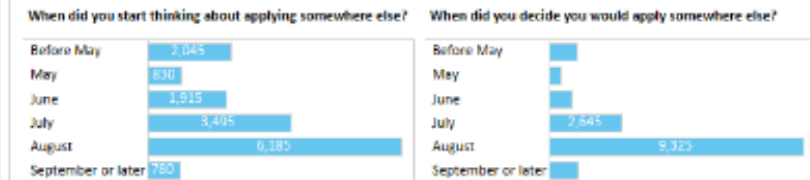
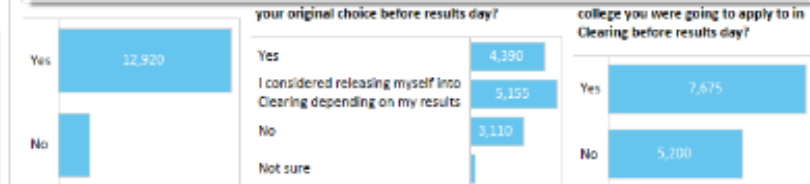


1. Use the filter to choose the statistic shown in all the charts

Weighted number of respondents

Weighted number of respondents

Weighted proportion of respondents

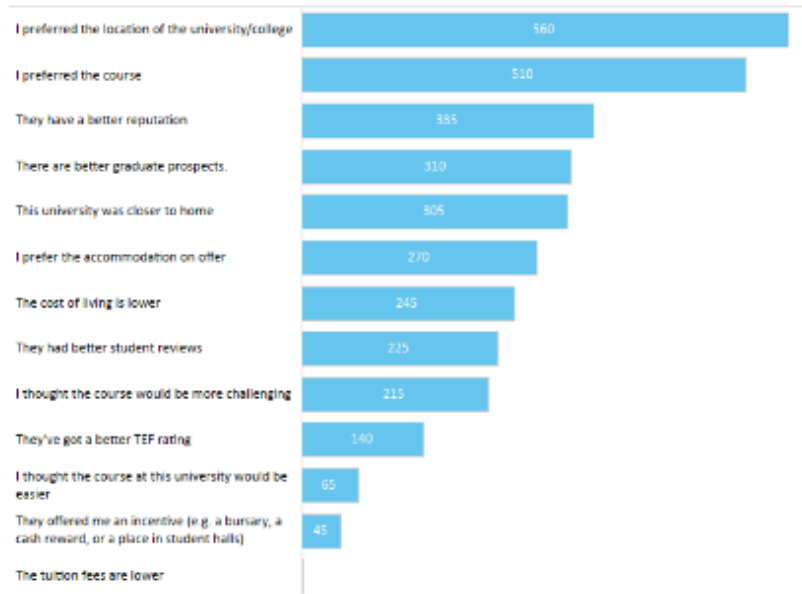


Survey results (Sector-wide)

Choose question to look at:

Which factors influenced your decision...

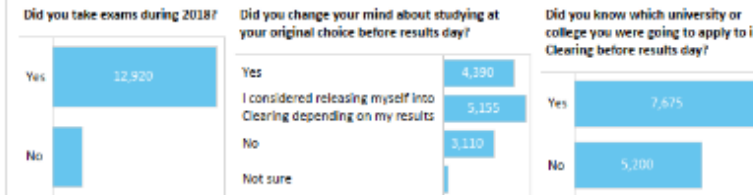
Which factors influenced your decision to choose the university you are going to, over the university you were originally placed at? Please select all that apply.



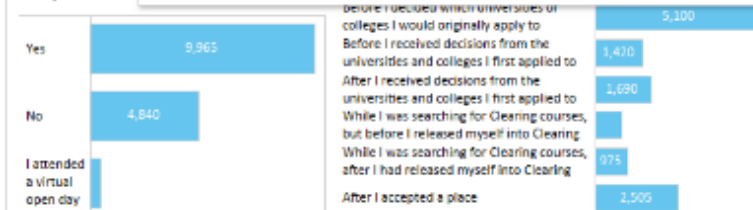
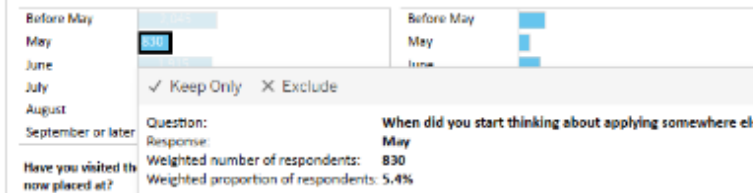
1. Use the filter to choose the statistic shown in all the charts

Weighted number of respondents

2. Use the charts below to filter the responses shown in the chart on the left.



When did you start thinking about applying somewhere else? When did you decide you would apply somewhere else?



Survey results (Sector-wide)

Look at responses or net importance? Choose question to look at:

Detailed responses

How important were the following...

How important were the following factors when choosing your place in Clearing?

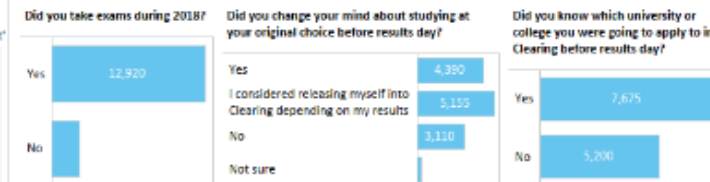
Bars are stacked from 'Not at all important' to 'Very important'



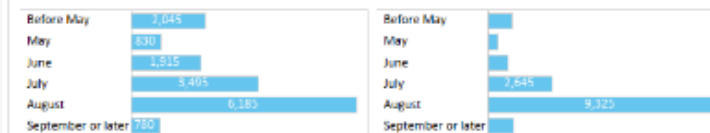
1. Use the filter to choose the statistic shown in all the charts

Weighted number of respondents

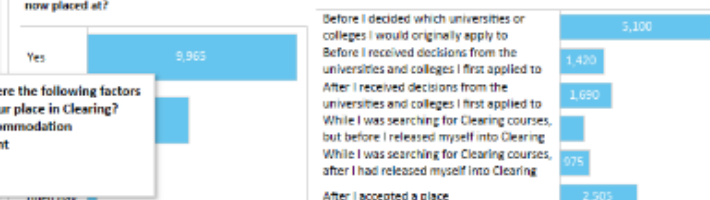
2. Use the charts below to filter the responses shown in the chart on the left.



When did you start thinking about applying somewhere else? When did you decide you would apply somewhere else?



Have you visited the university or college you're now placed at? When did you visit this university or college? Please select all that apply.

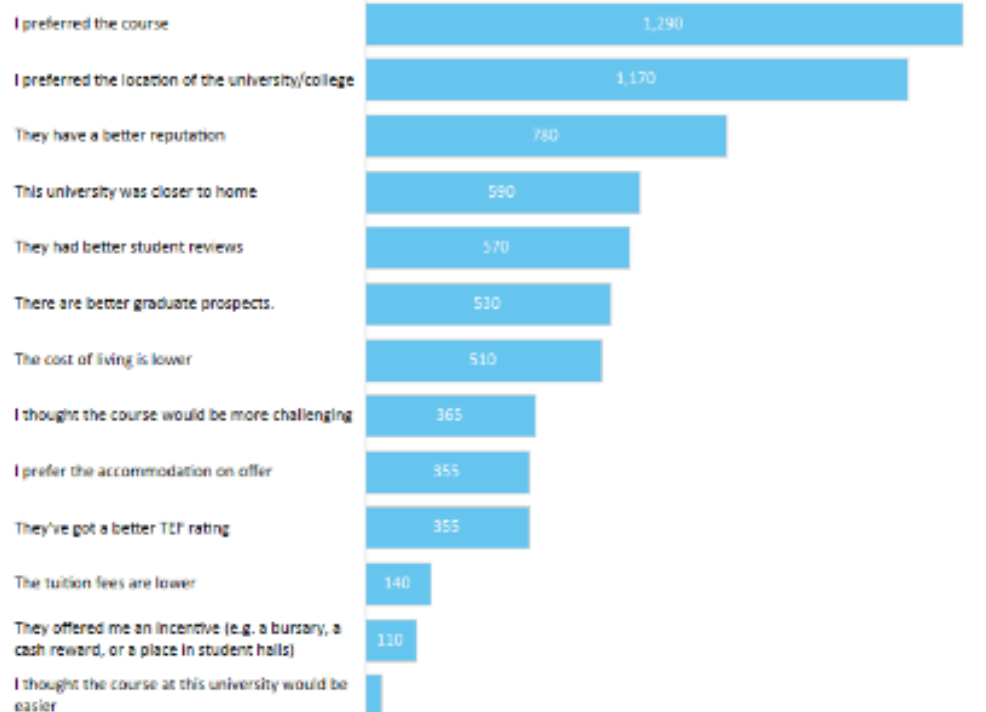


Survey results (Sector-wide)

Choose question to look at:

Which factors influenced your decision...

Which factors influenced your decision to choose the university you are going to, over the university you were originally placed at? Please select all that apply.

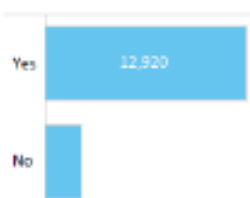


1. Use the filter to choose the statistic shown in all the charts

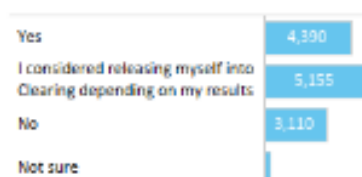
Weighted number of respondents

2. Use the charts below to filter the responses shown in the chart on the left.

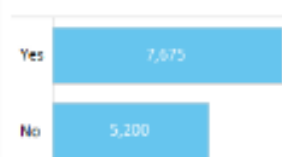
Did you take exams during 2018?



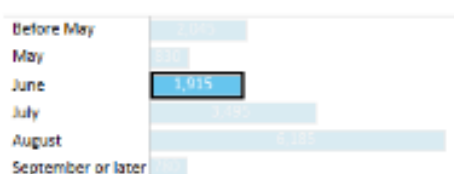
Did you change your mind about studying at your original choice before results day?



Did you know which university or college you were going to apply to in Clearing before results day?



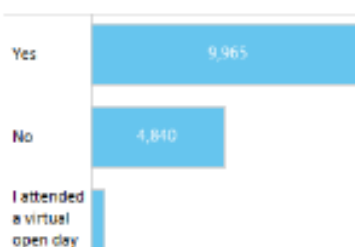
When did you start thinking about applying somewhere else?



When did you decide you would apply somewhere else?



Have you visited the university or college you're now placed at?



When did you visit this university or college? Please select all that apply.

