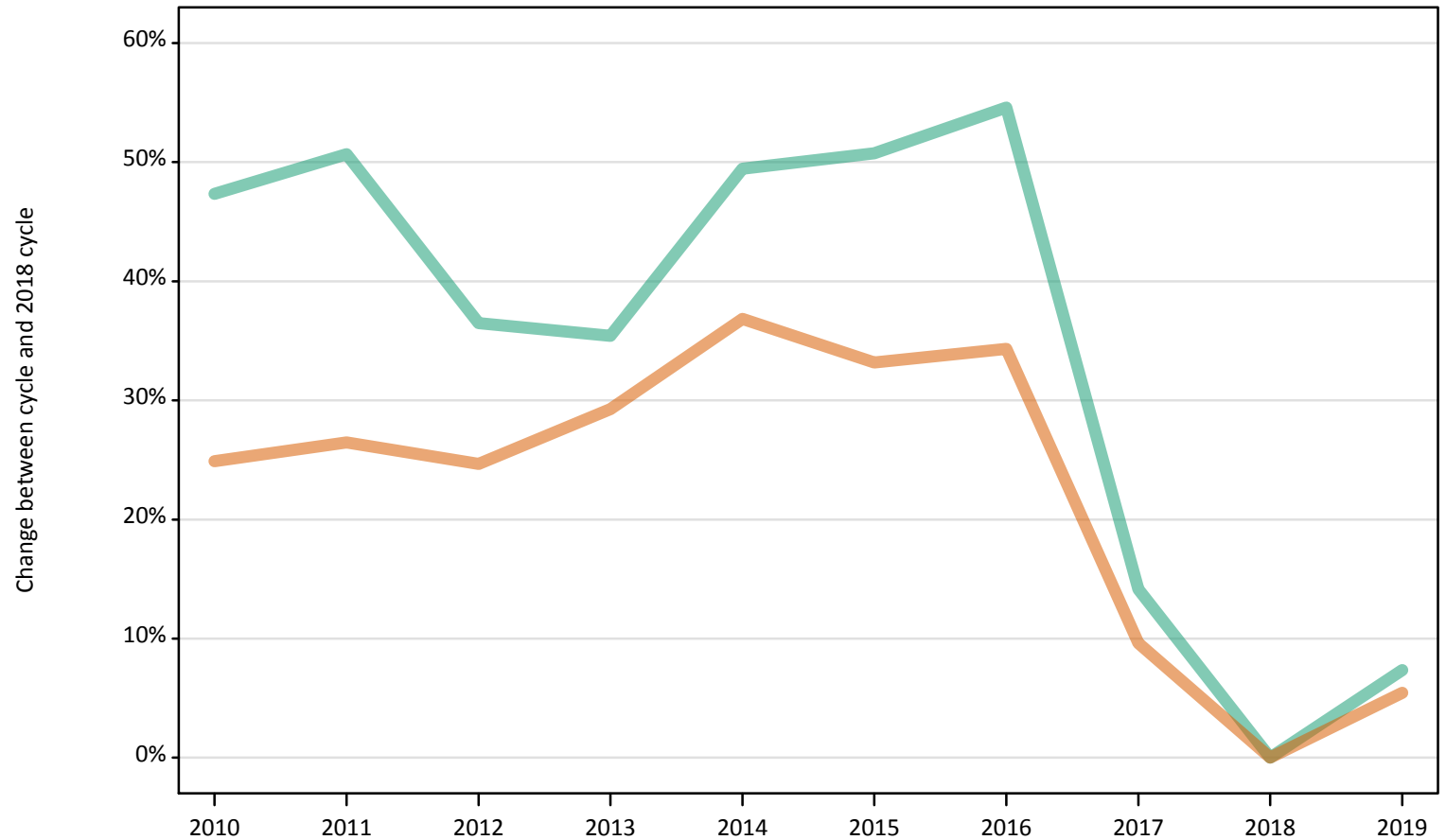


Nursing applicants by sex and age at the 30 June deadline

IB.2.1 Nursing applicants by sex: All domiciles Difference between cycle and 2018 cycle

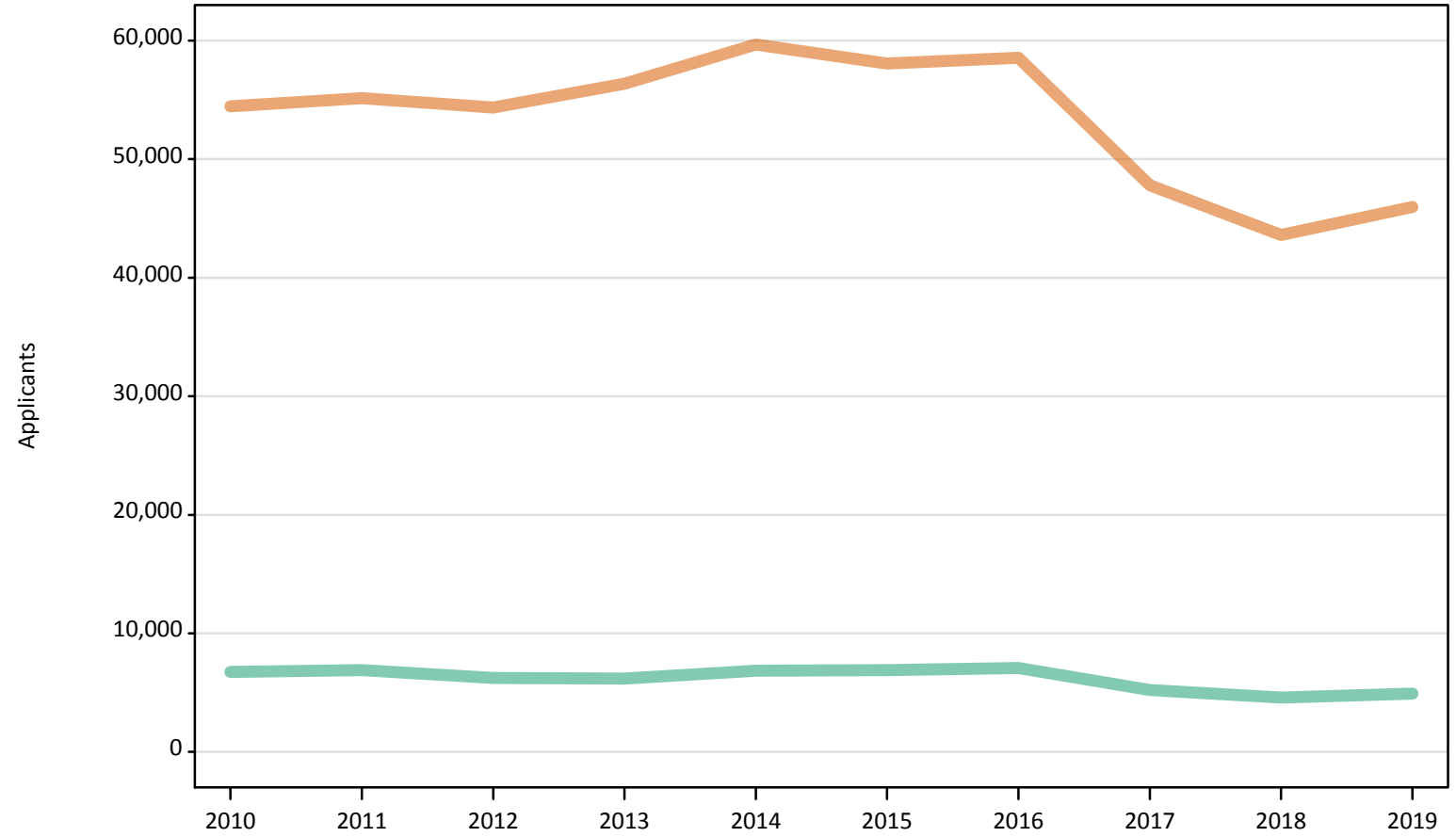
Men
Women



Note: The percentage change is not plotted in the above chart for groups with fewer than 500 applicants in any one cycle.

IB.2.2 Nursing applicants by sex: All domiciles

Men
Women



IB.2.3 Nursing applicants by age and sex: All domiciles

Age group and sex		2010	2011	2012	2013	2014	2015	2016	2017	2018	2019
Under 18	Women	450	270	140	150	160	130	140	130	110	160
	Men	40	10	10	10	10	20	10	10	10	10
18	Women	10,740	10,900	11,480	11,770	11,930	12,340	12,090	11,110	10,790	11,840
	Men	590	590	550	540	580	570	570	500	550	650
19	Women	6,050	6,450	6,060	6,810	7,120	6,770	6,910	5,780	5,340	5,830
	Men	440	480	430	450	480	490	460	380	360	410
20-24	Women	14,660	14,830	14,820	15,470	16,570	15,540	14,790	11,910	10,510	10,410
	Men	1,530	1,570	1,430	1,400	1,560	1,470	1,380	1,020	930	1,000
25-29	Women	8,180	8,370	8,200	8,610	9,320	8,980	9,200	6,860	5,860	6,060
	Men	1,230	1,170	1,050	1,140	1,170	1,140	1,140	820	690	690
30-34	Women	5,390	5,650	5,440	5,580	5,810	5,530	5,860	4,500	4,070	4,210
	Men	970	1,010	890	880	910	890	970	620	500	500
35 and over	Women	8,970	8,650	8,220	7,970	8,740	8,770	9,570	7,510	6,910	7,450
	Men	1,950	2,060	1,880	1,780	2,130	2,320	2,550	1,870	1,540	1,640
All ages	Women	54,440	55,130	54,350	56,350	59,650	58,060	58,550	47,790	43,590	45,970
	Men	6,740	6,890	6,240	6,190	6,840	6,900	7,070	5,220	4,570	4,910

IB.2.4 Nursing applicants by age and sex: All domiciles

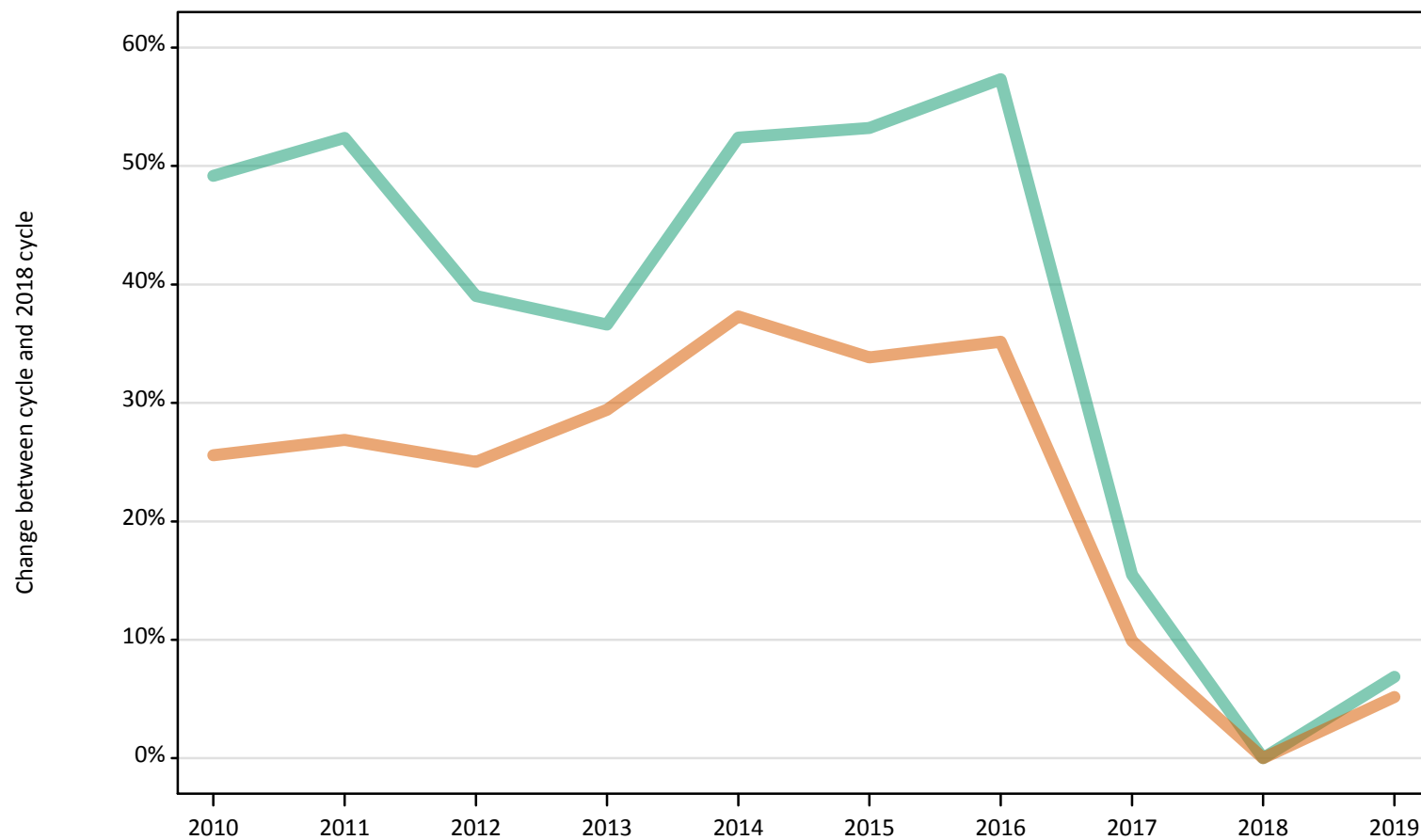
Difference between cycle and 2018 cycle

Age group and sex		2010	2011	2012	2013	2014	2015	2016	2017	2018	2019
Under 18	Women	301%	142%	25%	33%	42%	14%	21%	17%	0%	46%
	Men	414%	100%	57%	29%	29%	143%	-14%	29%	0%	86%
18	Women	-0%	1%	6%	9%	11%	14%	12%	3%	0%	10%
	Men	7%	8%	-0%	-3%	5%	3%	4%	-9%	0%	18%
19	Women	13%	21%	14%	28%	33%	27%	30%	8%	0%	9%
	Men	21%	32%	19%	26%	33%	36%	27%	6%	0%	14%
20-24	Women	39%	41%	41%	47%	58%	48%	41%	13%	0%	-1%
	Men	65%	70%	54%	51%	69%	59%	49%	10%	0%	8%
25-29	Women	40%	43%	40%	47%	59%	53%	57%	17%	0%	3%
	Men	78%	70%	53%	65%	70%	65%	65%	19%	0%	0%
30-34	Women	33%	39%	34%	37%	43%	36%	44%	11%	0%	3%
	Men	92%	100%	77%	74%	80%	77%	92%	22%	0%	-0%
35 and over	Women	30%	25%	19%	15%	26%	27%	39%	9%	0%	8%
	Men	27%	34%	22%	16%	38%	51%	65%	21%	0%	7%
All ages	Women	25%	26%	25%	29%	37%	33%	34%	10%	0%	5%
	Men	47%	51%	36%	35%	49%	51%	55%	14%	0%	7%

Note: The percentage change is not recorded in the above table for groups with fewer than 10 applicants in that cycle or in the 2018 cycle.

IB.2.5 Nursing applicants by sex: UK Difference between cycle and 2018 cycle

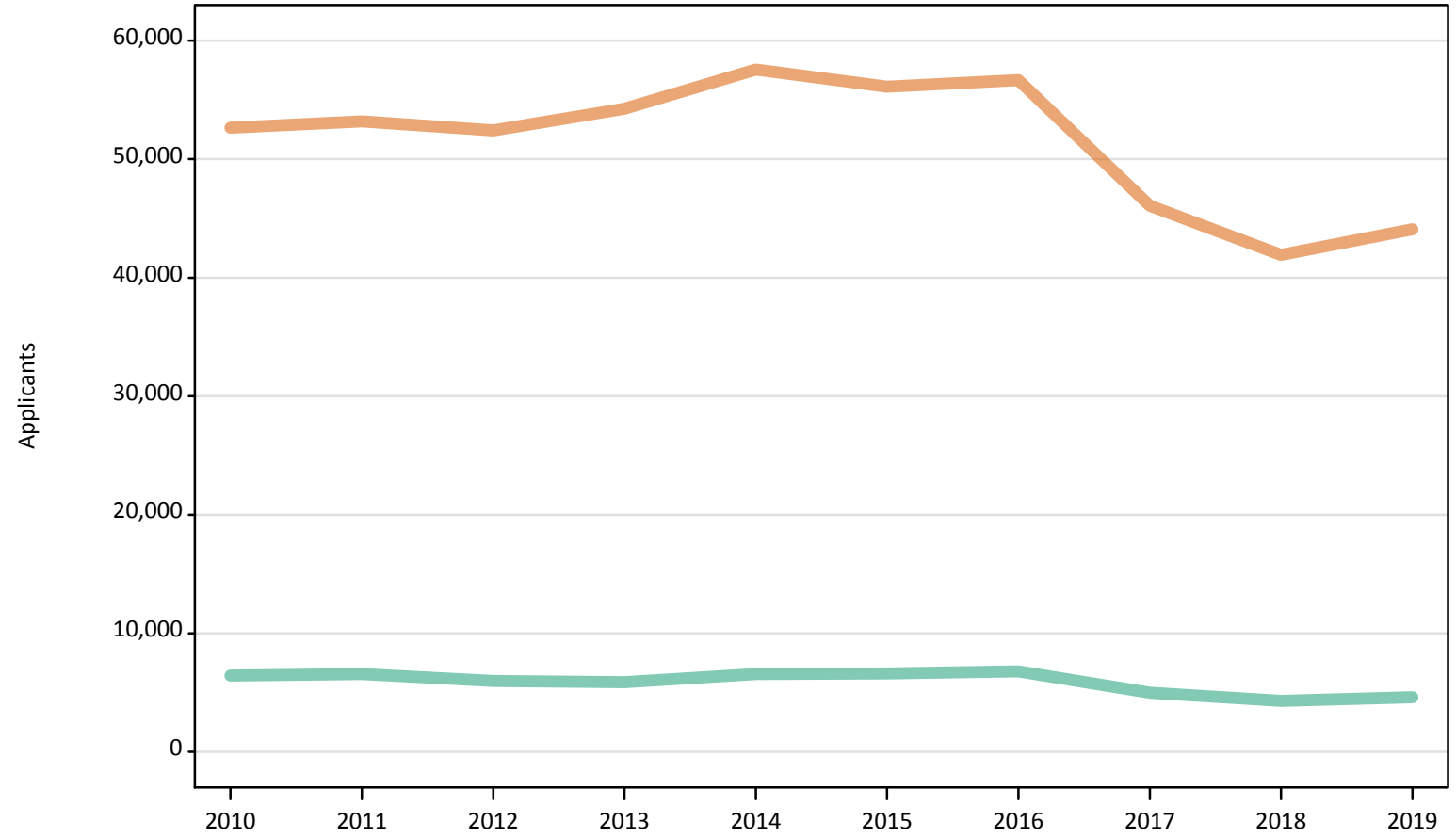
Men
Women



Note: The percentage change is not plotted in the above chart for groups with fewer than 500 applicants in any one cycle.

IB.2.6 Nursing applicants by sex: UK

Men
Women



IB.2.7 Nursing applicants by age and sex: UK

Age group and sex		2010	2011	2012	2013	2014	2015	2016	2017	2018	2019
Under 18	Women	370	180	60	60	70	60	60	60	50	70
	Men	40	10	10	0	0	10	0	0	10	0
18	Women	10,390	10,530	11,060	11,300	11,520	11,960	11,670	10,770	10,460	11,470
	Men	570	570	520	500	550	540	530	470	520	620
19	Women	5,670	6,080	5,670	6,390	6,680	6,360	6,500	5,420	4,980	5,430
	Men	410	440	410	420	440	450	420	350	330	380
20-24	Women	14,110	14,220	14,210	14,800	15,890	14,920	14,210	11,350	9,990	9,860
	Men	1,430	1,470	1,350	1,310	1,480	1,380	1,310	950	860	920
25-29	Women	7,960	8,090	7,970	8,350	9,070	8,720	8,990	6,680	5,690	5,880
	Men	1,160	1,100	1,010	1,080	1,130	1,100	1,100	790	650	630
30-34	Women	5,270	5,550	5,340	5,480	5,720	5,440	5,780	4,400	3,950	4,110
	Men	920	960	860	850	890	860	940	590	460	460
35 and over	Women	8,880	8,540	8,110	7,880	8,620	8,660	9,460	7,400	6,810	7,290
	Men	1,910	2,020	1,850	1,740	2,090	2,270	2,490	1,830	1,490	1,590
All ages	Women	52,640	53,190	52,420	54,260	57,550	56,110	56,660	46,070	41,920	44,090
	Men	6,440	6,570	6,000	5,890	6,570	6,610	6,790	4,980	4,310	4,610

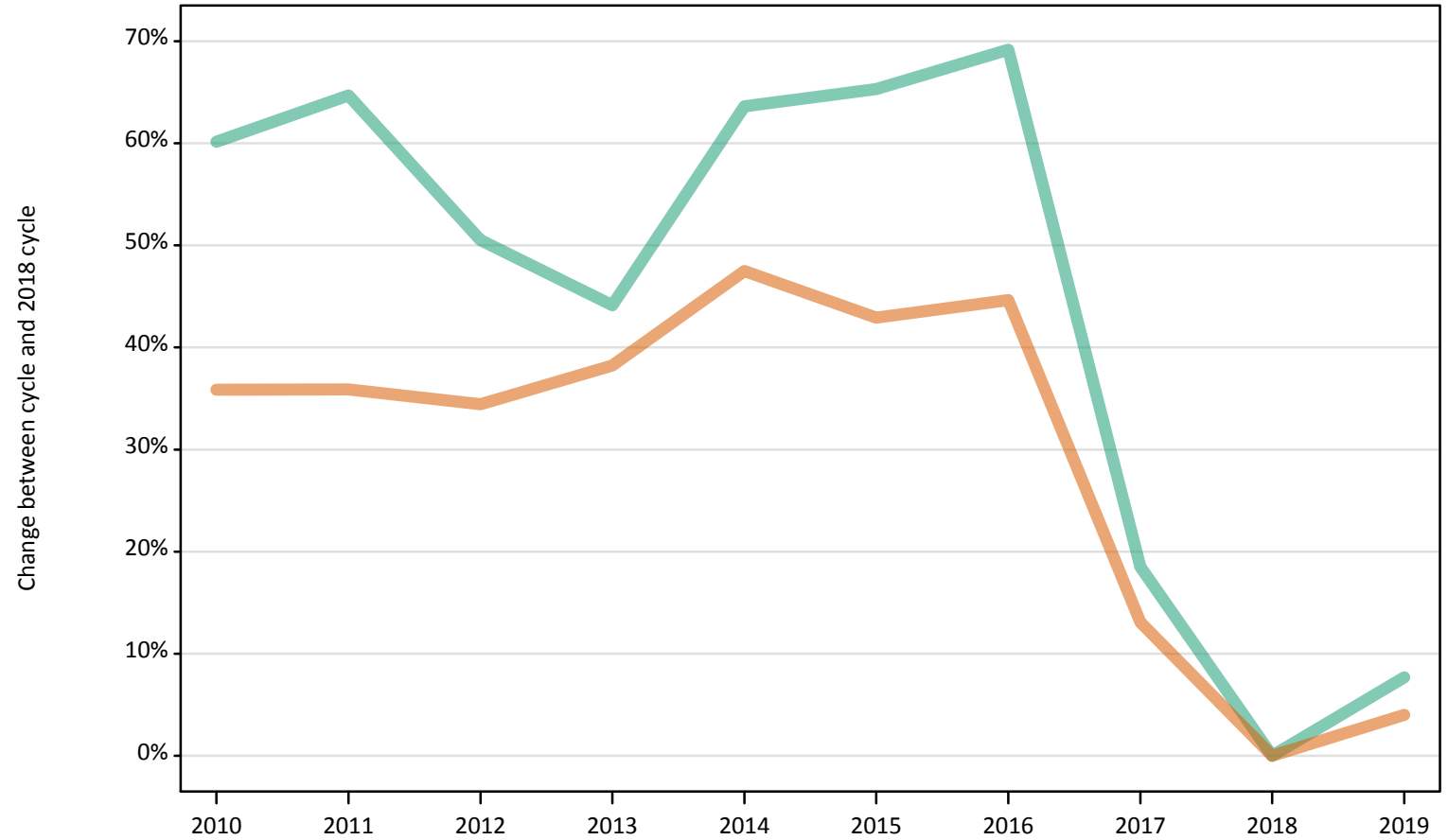
IB.2.8 Nursing applicants by age and sex: UK
 Difference between cycle and 2018 cycle

Age group and sex		2010	2011	2012	2013	2014	2015	2016	2017	2018	2019
Under 18	Women	645%	269%	20%	27%	39%	22%	29%	31%	0%	39%
	Men	600%	20%	40%			20%			0%	
18	Women	-1%	1%	6%	8%	10%	14%	12%	3%	0%	10%
	Men	10%	11%	0%	-3%	6%	5%	3%	-9%	0%	21%
19	Women	14%	22%	14%	28%	34%	28%	31%	9%	0%	9%
	Men	23%	34%	23%	27%	35%	38%	27%	6%	0%	15%
20-24	Women	41%	42%	42%	48%	59%	49%	42%	14%	0%	-1%
	Men	66%	70%	57%	51%	71%	60%	51%	10%	0%	7%
25-29	Women	40%	42%	40%	47%	59%	53%	58%	17%	0%	3%
	Men	80%	71%	56%	67%	75%	70%	71%	22%	0%	-3%
30-34	Women	33%	40%	35%	39%	45%	38%	46%	11%	0%	4%
	Men	100%	108%	87%	84%	92%	87%	103%	27%	0%	0%
35 and over	Women	30%	25%	19%	16%	27%	27%	39%	9%	0%	7%
	Men	28%	36%	24%	16%	40%	52%	67%	23%	0%	7%
All ages	Women	26%	27%	25%	29%	37%	34%	35%	10%	0%	5%
	Men	49%	52%	39%	37%	52%	53%	57%	15%	0%	7%

Note: The percentage change is not recorded in the above table for groups with fewer than 10 applicants in that cycle or in the 2018 cycle.

IB.2.9 Nursing applicants by sex: England
Difference between cycle and 2018 cycle

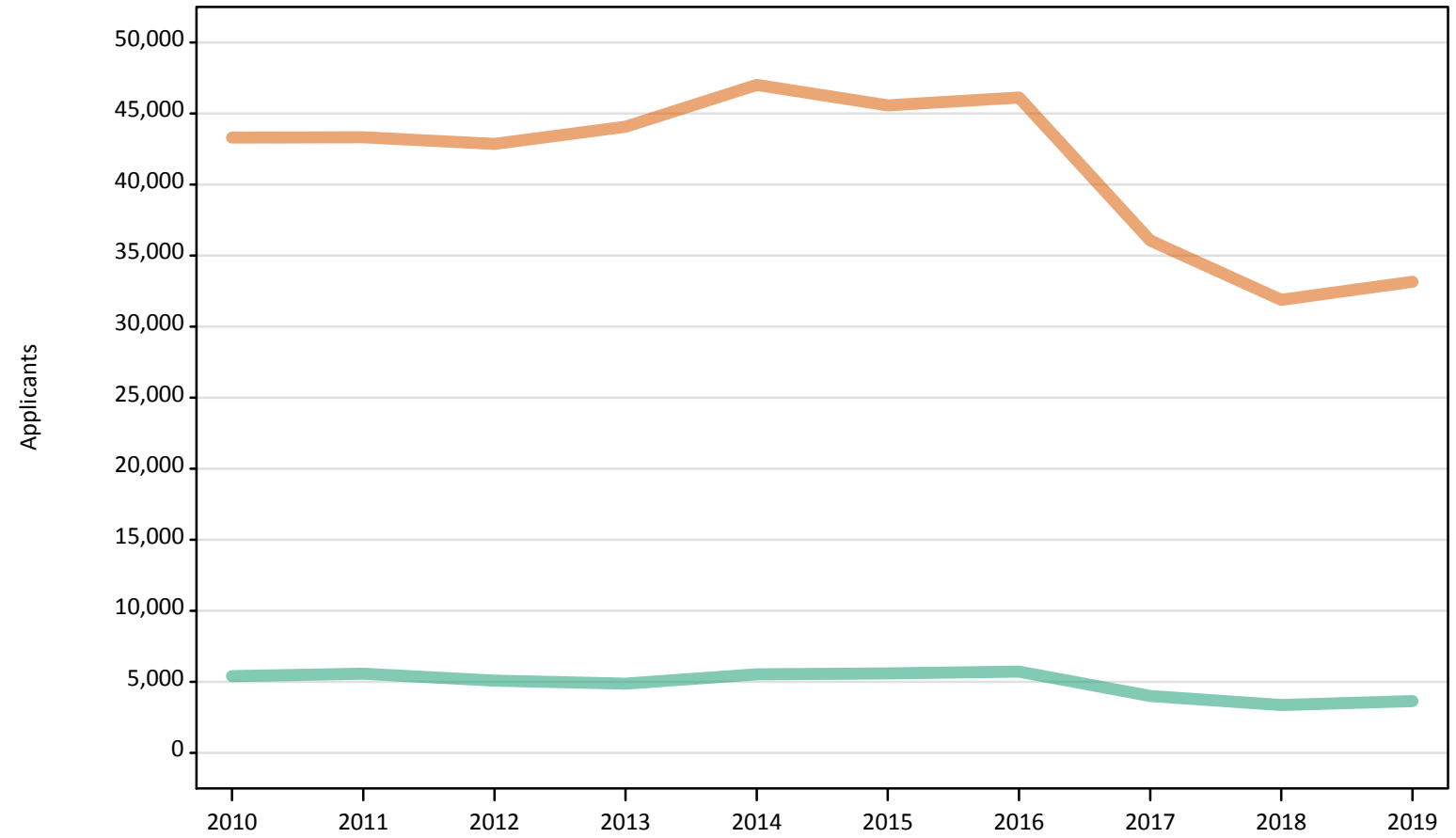
Men
Women



Note: The percentage change is not plotted in the above chart for groups with fewer than 500 applicants in any one cycle.

IB.2.10 Nursing applicants by sex: England

Men
Women



IB.2.11 Nursing applicants by age and sex: England

Age group and sex		2010	2011	2012	2013	2014	2015	2016	2017	2018	2019
Under 18	Women	260	120	20	20	20	20	10	10	10	10
	Men	30	10	0	0	0	0	0	0	0	0
18	Women	7,850	7,950	8,430	8,680	8,920	9,240	9,080	8,210	7,970	8,740
	Men	430	430	390	340	390	390	380	330	380	460
19	Women	4,610	4,930	4,530	5,170	5,470	5,210	5,270	4,280	3,850	4,100
	Men	340	370	330	330	350	380	310	270	250	290
20-24	Women	11,760	11,550	11,670	11,960	12,970	12,080	11,450	8,870	7,550	7,420
	Men	1,190	1,200	1,110	1,050	1,200	1,130	1,060	710	640	710
25-29	Women	6,660	6,700	6,600	6,840	7,370	7,030	7,330	5,110	4,160	4,310
	Men	950	910	830	860	930	900	890	590	460	460
30-34	Women	4,510	4,700	4,590	4,610	4,800	4,520	4,770	3,400	2,940	2,960
	Men	800	830	750	730	750	740	800	470	350	350
35 and over	Women	7,660	7,370	7,020	6,780	7,470	7,470	8,190	6,170	5,400	5,630
	Men	1,690	1,830	1,690	1,570	1,910	2,060	2,280	1,640	1,300	1,390
All ages	Women	43,310	43,320	42,850	44,060	47,020	45,560	46,110	36,060	31,880	33,160
	Men	5,420	5,570	5,090	4,880	5,540	5,590	5,720	4,010	3,380	3,640

IB.2.12 Nursing applicants by age and sex: England

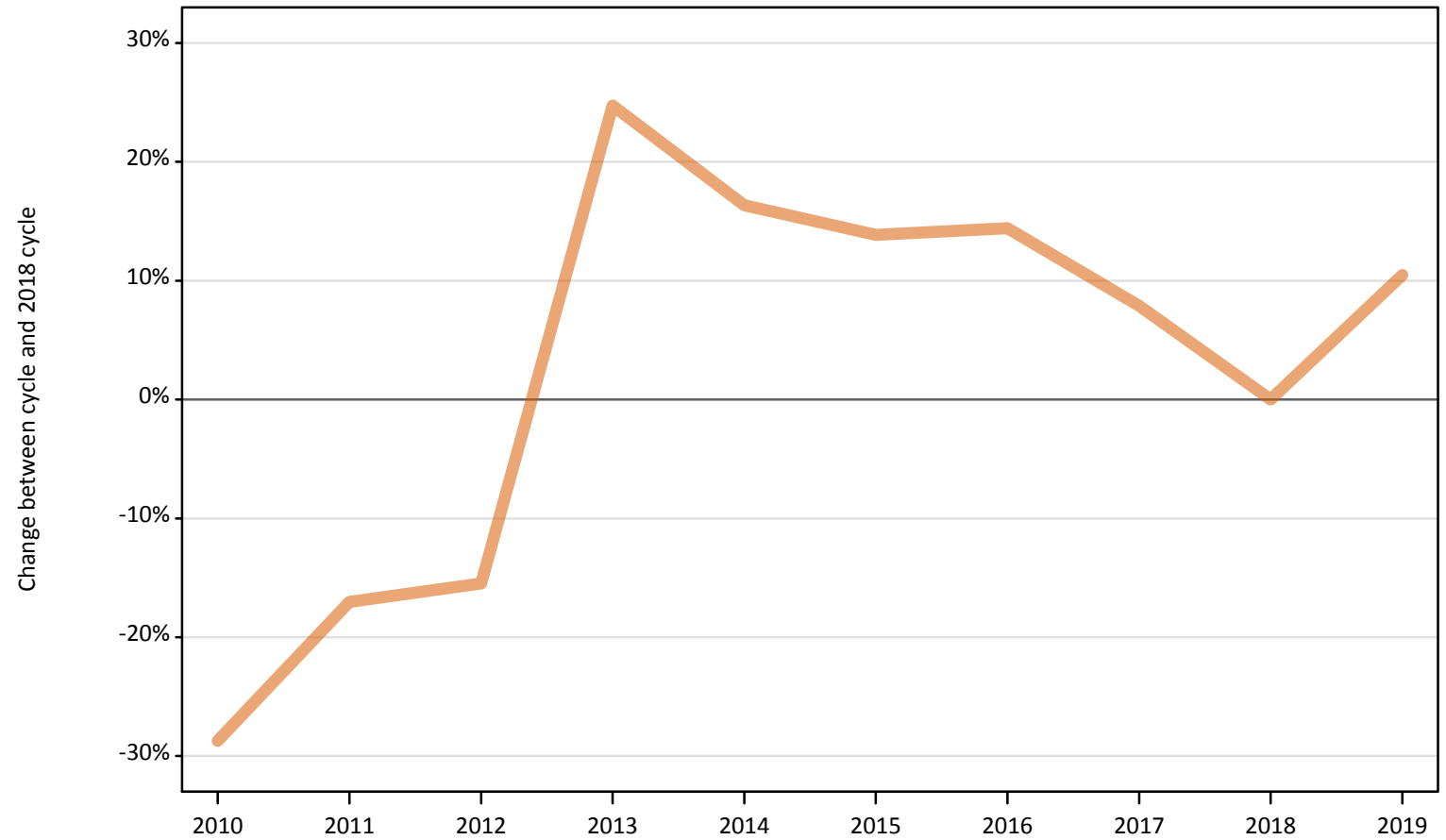
Difference between cycle and 2018 cycle

Age group and sex		2010	2011	2012	2013	2014	2015	2016	2017	2018	2019
Under 18	Women	1892%	823%	23%	46%	31%	23%	8%	0%	0%	-23%
	Men										
18	Women	-1%	-0%	6%	9%	12%	16%	14%	3%	0%	10%
	Men	11%	12%	1%	-12%	1%	1%	-1%	-15%	0%	18%
19	Women	20%	28%	18%	34%	42%	35%	37%	11%	0%	6%
	Men	36%	49%	35%	32%	42%	55%	27%	11%	0%	19%
20-24	Women	56%	53%	55%	58%	72%	60%	52%	18%	0%	-2%
	Men	85%	87%	72%	63%	87%	75%	65%	11%	0%	10%
25-29	Women	60%	61%	59%	65%	77%	69%	76%	23%	0%	4%
	Men	105%	96%	79%	85%	100%	93%	92%	27%	0%	-2%
30-34	Women	53%	60%	56%	57%	63%	53%	62%	16%	0%	0%
	Men	131%	141%	116%	111%	118%	114%	130%	36%	0%	1%
35 and over	Women	42%	37%	30%	26%	38%	38%	52%	14%	0%	4%
	Men	31%	41%	30%	21%	47%	59%	76%	26%	0%	7%
All ages	Women	36%	36%	34%	38%	47%	43%	45%	13%	0%	4%
	Men	60%	65%	51%	44%	64%	65%	69%	19%	0%	8%

Note: The percentage change is not recorded in the above table for groups with fewer than 10 applicants in that cycle or in the 2018 cycle.

IB.2.13 Nursing applicants by sex: Northern Ireland
Difference between cycle and 2018 cycle

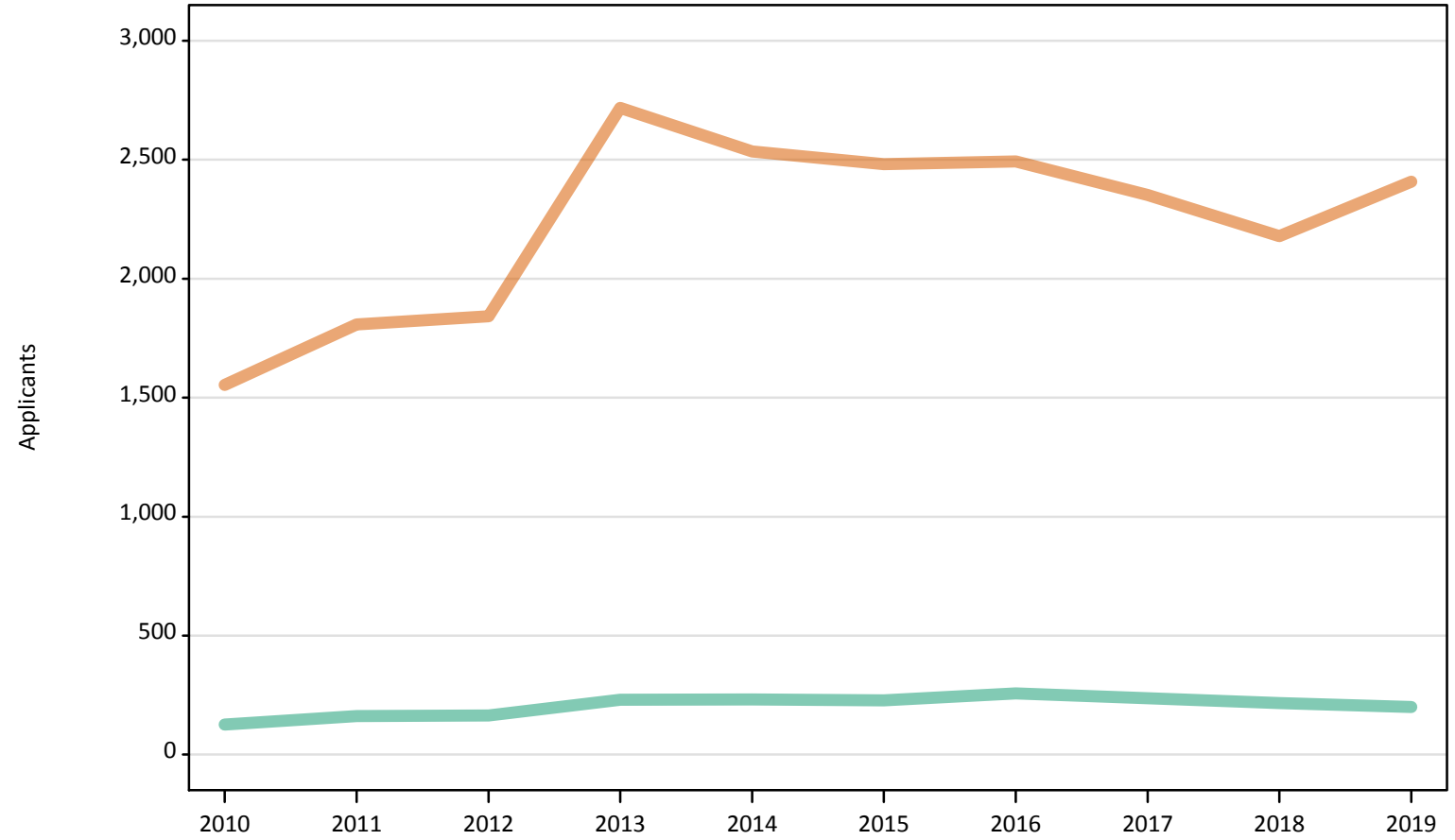
Men
Women



Note: The percentage change is not plotted in the above chart for groups with fewer than 500 applicants in any one cycle.

IB.2.14 Nursing applicants by sex: Northern Ireland

Men
Women



IB.2.15 Nursing applicants by age and sex: Northern Ireland

Age group and sex		2010	2011	2012	2013	2014	2015	2016	2017	2018	2019
Under 18	Women	0	0	0	0	0	0	0	0	0	0
	Men	0	0	0	0	0	0	0	0	0	0
18	Women	770	840	890	930	830	850	840	830	820	900
	Men	20	50	50	60	60	50	50	70	70	70
19	Women	200	270	280	400	370	330	370	360	320	390
	Men	10	10	30	30	30	30	40	40	40	30
20-24	Women	330	420	420	750	700	680	640	600	530	520
	Men	40	50	40	50	70	50	60	60	50	50
25-29	Women	130	150	140	300	320	310	300	240	230	230
	Men	20	20	20	40	40	40	50	40	30	20
30-34	Women	50	60	60	160	170	160	170	150	130	170
	Men	10	20	10	20	20	20	20	20	20	20
35 and over	Women	70	70	60	170	140	160	170	170	150	190
	Men	20	10	10	20	20	30	30	20	10	20
All ages	Women	1,550	1,810	1,840	2,720	2,540	2,480	2,490	2,350	2,180	2,410
	Men	130	160	170	230	230	230	260	240	220	200

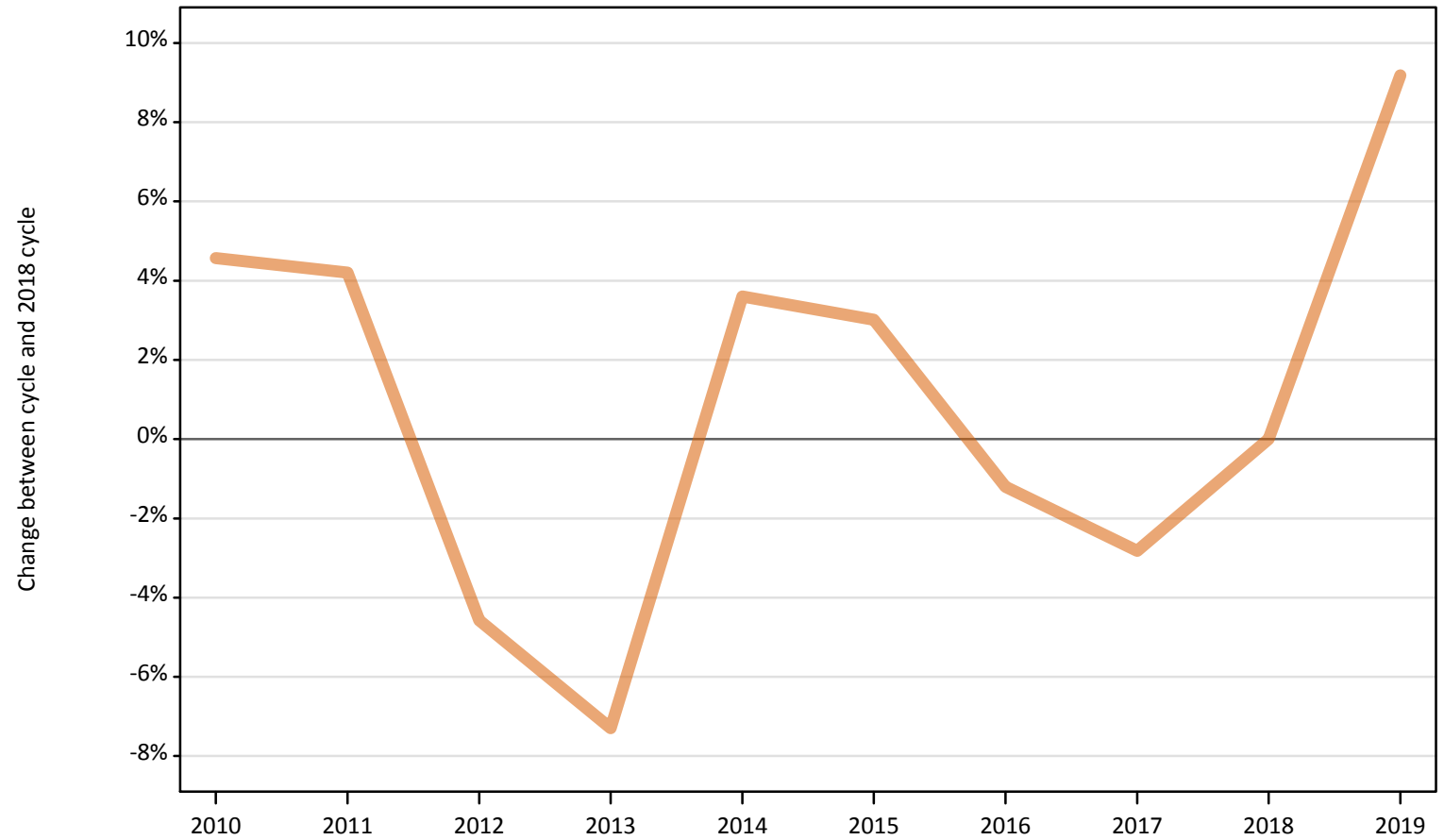
IB.2.16 Nursing applicants by age and sex: Northern Ireland
Difference between cycle and 2018 cycle

Age group and sex		2010	2011	2012	2013	2014	2015	2016	2017	2018	2019
Under 18	Women										
	Men										
18	Women	-6%	2%	8%	13%	1%	3%	1%	0%	0%	9%
	Men	-69%	-27%	-37%	-14%	-15%	-24%	-28%	-4%	0%	-8%
19	Women	-37%	-17%	-13%	27%	17%	5%	17%	13%	0%	22%
	Men	-67%	-64%	-17%	-14%	-19%	-11%	17%	-3%	0%	-25%
20-24	Women	-37%	-20%	-20%	43%	33%	29%	23%	14%	0%	-1%
	Men	-27%	-12%	-24%	4%	29%	4%	24%	22%	0%	0%
25-29	Women	-44%	-36%	-39%	30%	41%	33%	32%	7%	0%	0%
	Men	-25%	-21%	-18%	57%	39%	25%	64%	25%	0%	-18%
30-34	Women	-62%	-55%	-55%	25%	31%	22%	28%	16%	0%	31%
	Men	-35%	0%	-18%	18%	-6%	29%	35%	24%	0%	0%
35 and over	Women	-54%	-52%	-63%	11%	-7%	2%	11%	11%	0%	28%
	Men	57%	-7%	-7%	50%	50%	129%	129%	21%	0%	21%
All ages	Women	-29%	-17%	-15%	25%	16%	14%	14%	8%	0%	10%
	Men	-42%	-25%	-24%	6%	7%	5%	18%	10%	0%	-8%

Note: The percentage change is not recorded in the above table for groups with fewer than 10 applicants in that cycle or in the 2018 cycle.

IB.2.17 Nursing applicants by sex: Scotland
Difference between cycle and 2018 cycle

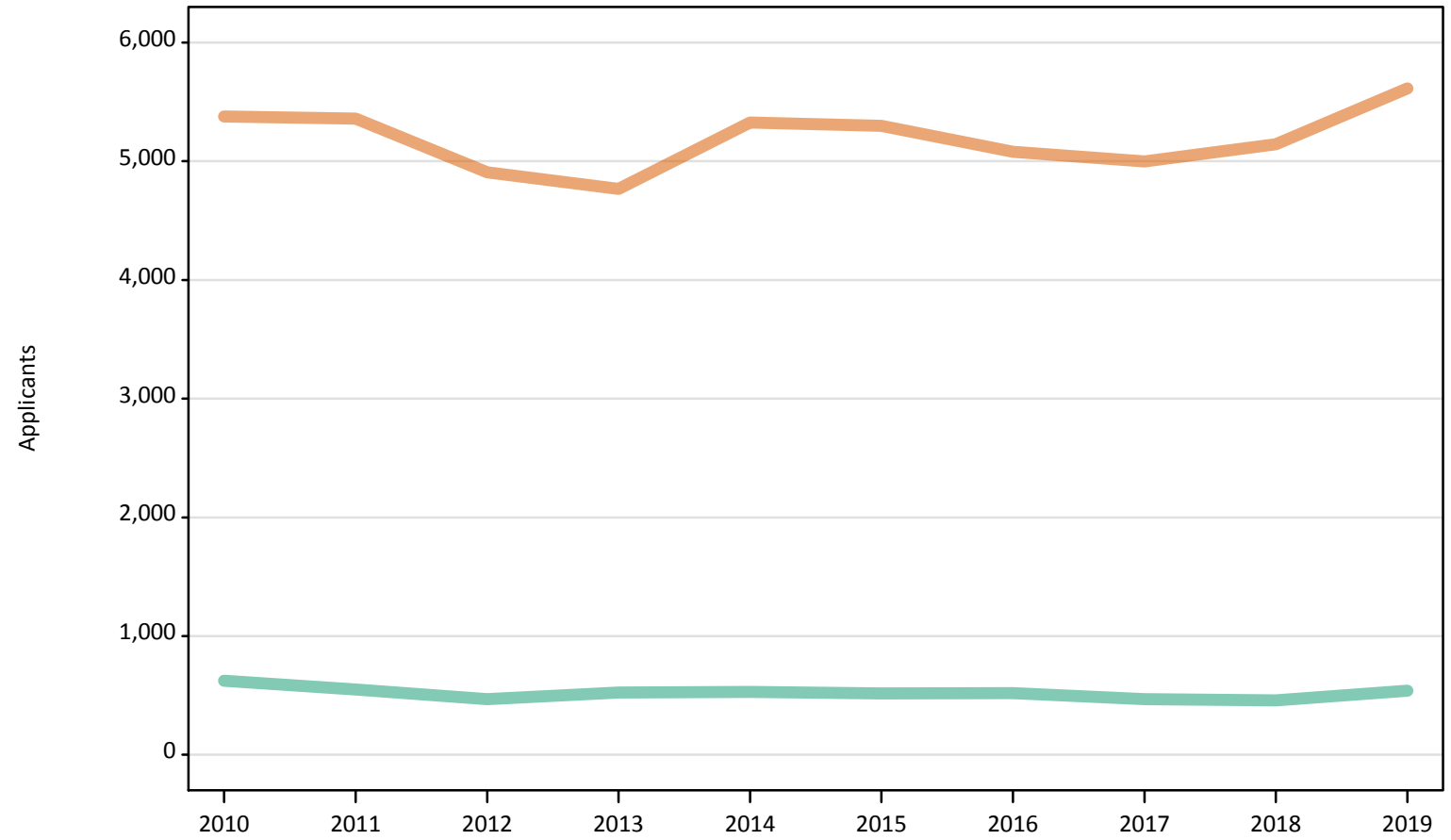
Men
Women



Note: The percentage change is not plotted in the above chart for groups with fewer than 500 applicants in any one cycle.

IB.2.18 Nursing applicants by sex: Scotland

Men
Women



IB.2.19 Nursing applicants by age and sex: Scotland

Age group and sex		2010	2011	2012	2013	2014	2015	2016	2017	2018	2019
Under 18	Women	100	60	40	40	50	40	40	50	40	50
	Men	0	0	0	0	0	0	0	0	0	0
18	Women	1,180	1,180	1,170	1,110	1,190	1,220	1,100	1,120	1,080	1,230
	Men	80	60	60	70	70	70	70	40	40	70
19	Women	590	550	560	520	550	510	520	460	480	550
	Men	40	40	30	50	40	20	40	30	20	30
20-24	Women	1,400	1,500	1,300	1,310	1,470	1,360	1,250	1,190	1,230	1,220
	Men	140	140	120	120	130	130	120	110	100	120
25-29	Women	790	780	770	740	880	900	870	860	850	870
	Men	130	110	90	110	100	110	100	100	110	100
30-34	Women	480	530	420	430	490	540	540	570	560	660
	Men	90	80	70	70	70	60	80	70	60	70
35 and over	Women	850	750	660	610	700	730	760	760	900	1,040
	Men	140	120	100	110	120	130	110	120	130	140
All ages	Women	5,380	5,360	4,910	4,770	5,330	5,300	5,080	5,000	5,140	5,610
	Men	620	550	470	520	530	520	520	470	460	540

IB.2.20 Nursing applicants by age and sex: Scotland

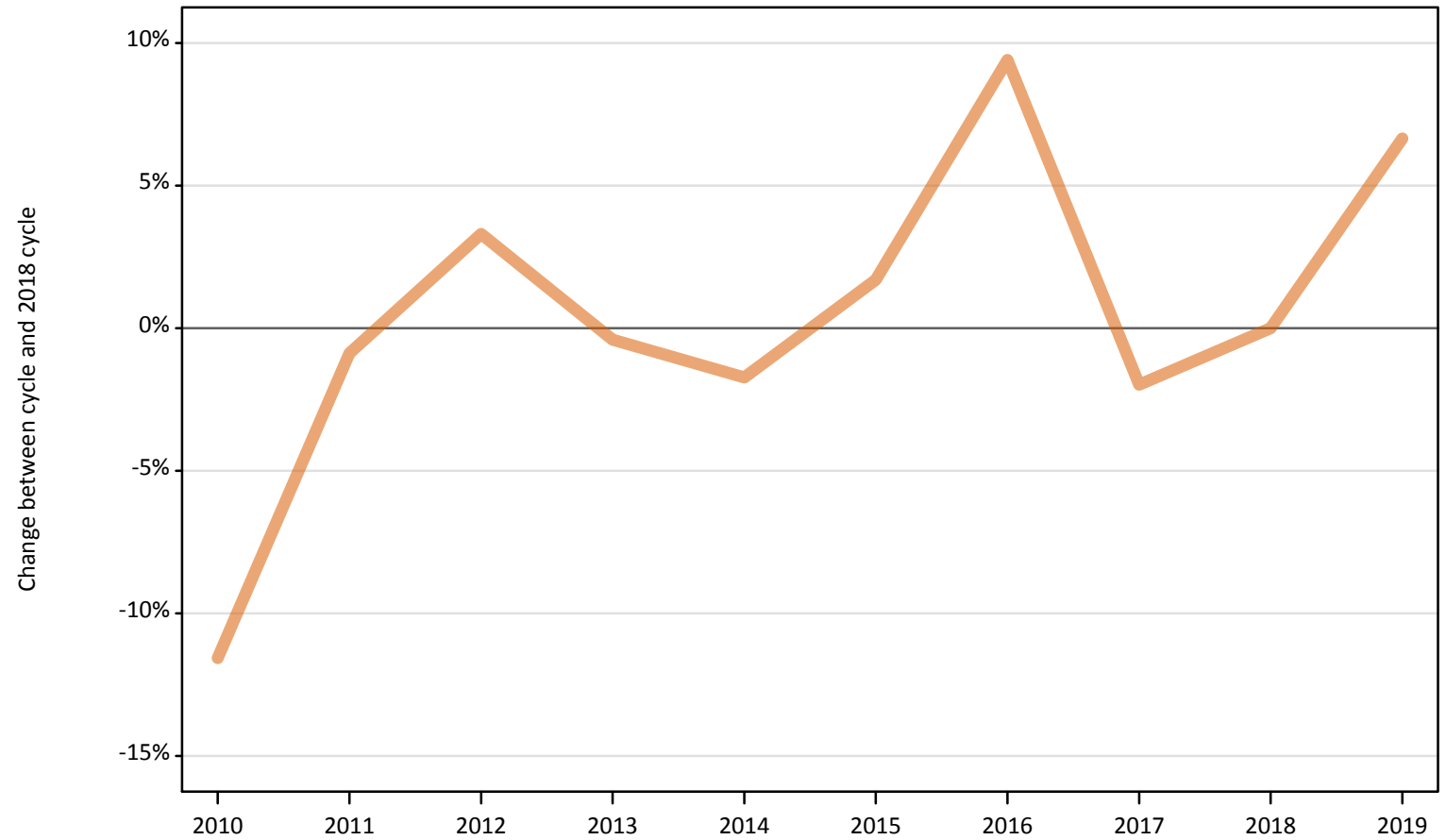
Difference between cycle and 2018 cycle

Age group and sex		2010	2011	2012	2013	2014	2015	2016	2017	2018	2019
Under 18	Women	171%	69%	14%	9%	43%	17%	20%	34%	0%	54%
	Men										
18	Women	9%	9%	8%	2%	10%	12%	1%	3%	0%	13%
	Men	116%	68%	63%	92%	87%	79%	84%	11%	0%	89%
19	Women	22%	13%	15%	8%	13%	6%	8%	-4%	0%	13%
	Men	67%	46%	8%	88%	75%	-4%	67%	4%	0%	38%
20-24	Women	14%	22%	6%	6%	19%	11%	2%	-3%	0%	-1%
	Men	42%	37%	18%	22%	29%	32%	18%	13%	0%	21%
25-29	Women	-7%	-8%	-10%	-13%	3%	6%	2%	1%	0%	2%
	Men	25%	3%	-15%	1%	-7%	0%	-3%	-3%	0%	-6%
30-34	Women	-15%	-6%	-26%	-23%	-12%	-5%	-4%	1%	0%	17%
	Men	41%	32%	3%	6%	16%	-3%	25%	3%	0%	17%
35 and over	Women	-6%	-16%	-27%	-32%	-22%	-19%	-16%	-15%	0%	16%
	Men	7%	-4%	-17%	-15%	-8%	-1%	-13%	-6%	0%	10%
All ages	Women	5%	4%	-5%	-7%	4%	3%	-1%	-3%	0%	9%
	Men	36%	20%	2%	14%	16%	13%	14%	2%	0%	18%

Note: The percentage change is not recorded in the above table for groups with fewer than 10 applicants in that cycle or in the 2018 cycle.

IB.2.21 Nursing applicants by sex: Wales
Difference between cycle and 2018 cycle

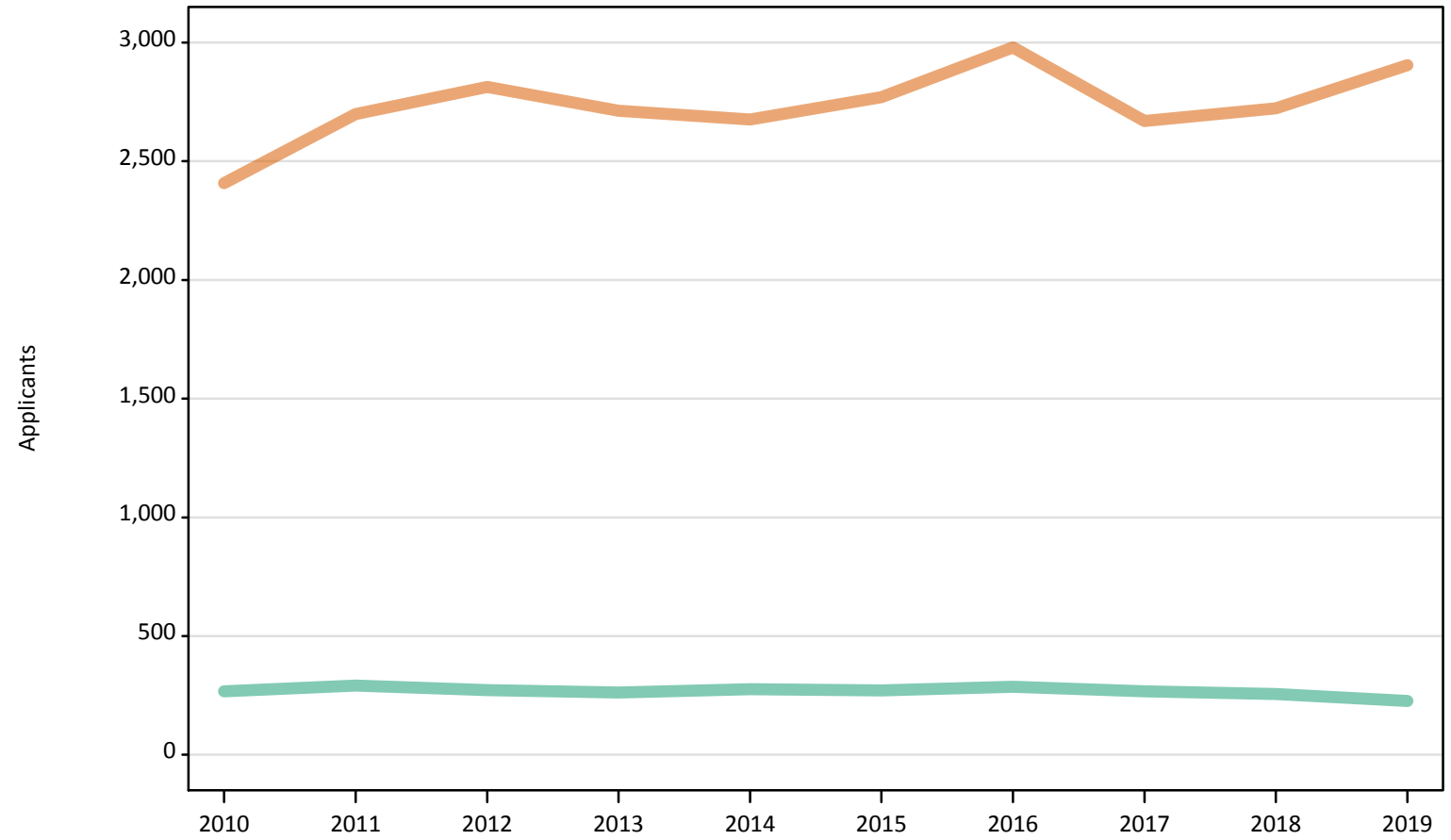
Men
Women



Note: The percentage change is not plotted in the above chart for groups with fewer than 500 applicants in any one cycle.

IB.2.22 Nursing applicants by sex: Wales

Men
Women



IB.2.23 Nursing applicants by age and sex: Wales

Age group and sex		2010	2011	2012	2013	2014	2015	2016	2017	2018	2019
Under 18	Women	10	0	0	0	0	0	0	0	0	0
	Men	0	0	0	0	0	0	0	0	0	0
18	Women	590	550	570	580	580	650	660	610	580	600
	Men	40	30	20	30	30	30	30	40	20	30
19	Women	270	340	310	290	300	300	340	320	330	390
	Men	20	20	20	20	20	20	30	20	20	30
20-24	Women	620	740	820	790	750	800	860	690	680	700
	Men	70	90	90	80	80	70	70	70	70	50
25-29	Women	380	460	460	470	500	480	480	470	460	470
	Men	60	60	60	60	60	60	60	60	50	50
30-34	Women	240	260	270	270	250	230	290	290	320	320
	Men	30	30	40	30	40	40	40	30	40	30
35 and over	Women	310	340	380	310	300	310	350	300	360	430
	Men	60	60	40	40	40	50	70	60	60	50
All ages	Women	2,410	2,700	2,810	2,710	2,680	2,770	2,980	2,670	2,720	2,900
	Men	270	290	270	260	280	270	290	270	260	230

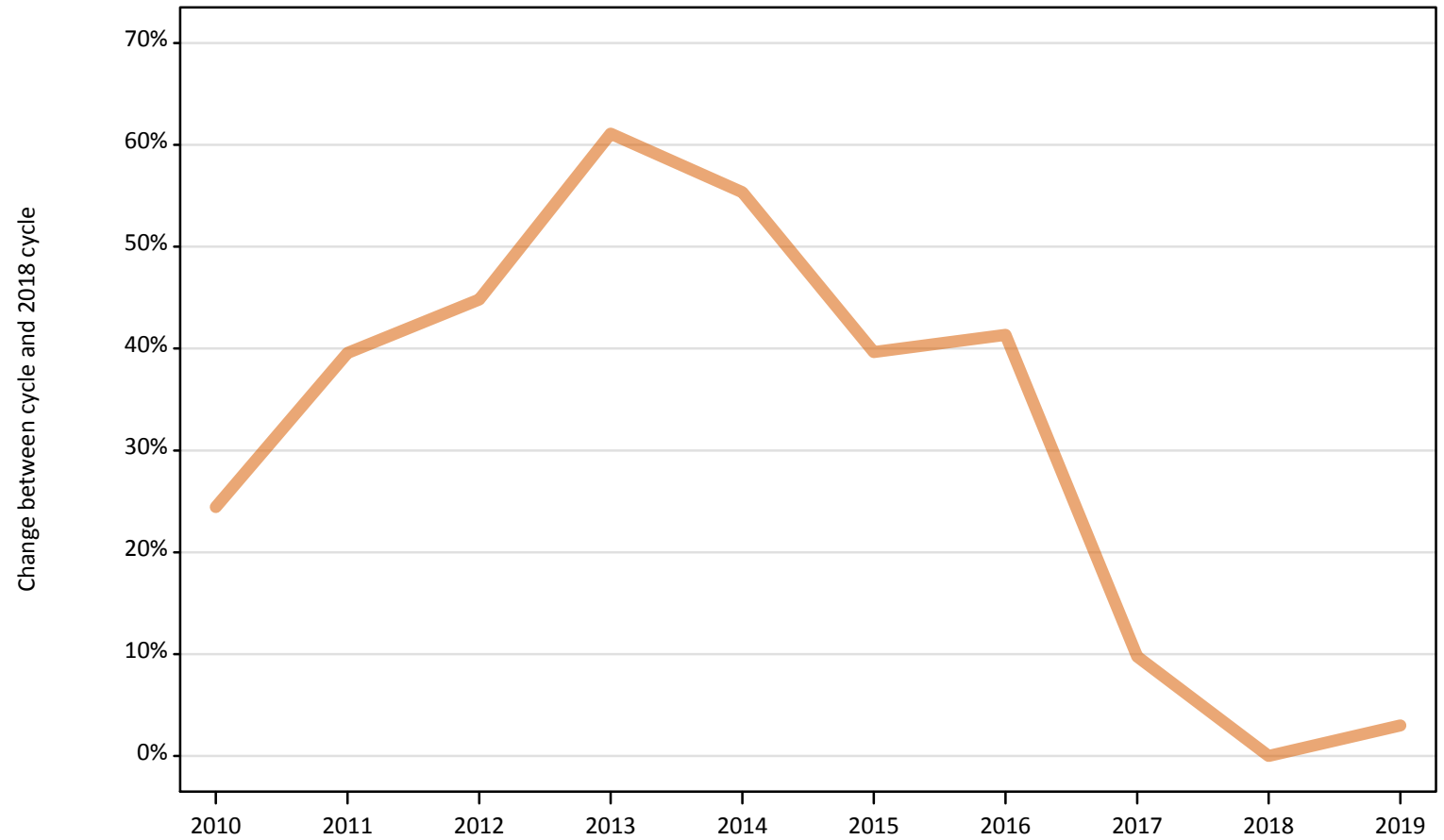
IB.2.24 Nursing applicants by age and sex: Wales
 Difference between cycle and 2018 cycle

Age group and sex		2010	2011	2012	2013	2014	2015	2016	2017	2018	2019
Under 18	Women										
	Men										
18	Women	1%	-5%	-2%	-1%	-1%	11%	13%	5%	0%	3%
	Men	77%	27%	5%	14%	36%	36%	18%	59%	0%	41%
19	Women	-17%	5%	-6%	-10%	-9%	-6%	4%	-3%	0%	20%
	Men	-22%	4%	-30%	-22%	-4%	-35%	9%	-30%	0%	13%
20-24	Women	-9%	9%	21%	15%	10%	17%	26%	1%	0%	2%
	Men	-7%	20%	27%	14%	10%	1%	-8%	-7%	0%	-34%
25-29	Women	-17%	1%	2%	2%	9%	5%	6%	2%	0%	3%
	Men	22%	33%	39%	39%	28%	33%	33%	35%	0%	0%
30-34	Women	-24%	-18%	-14%	-13%	-20%	-26%	-7%	-10%	0%	1%
	Men	-27%	-22%	0%	-8%	16%	14%	14%	-19%	0%	-32%
35 and over	Women	-15%	-5%	4%	-14%	-17%	-15%	-5%	-17%	0%	18%
	Men	5%	12%	-26%	-28%	-23%	-11%	19%	2%	0%	-9%
All ages	Women	-12%	-1%	3%	-0%	-2%	2%	9%	-2%	0%	7%
	Men	4%	14%	6%	3%	8%	6%	12%	4%	0%	-11%

Note: The percentage change is not recorded in the above table for groups with fewer than 10 applicants in that cycle or in the 2018 cycle.

IB.2.25 Nursing applicants by sex: EU (excluding UK)
Difference between cycle and 2018 cycle

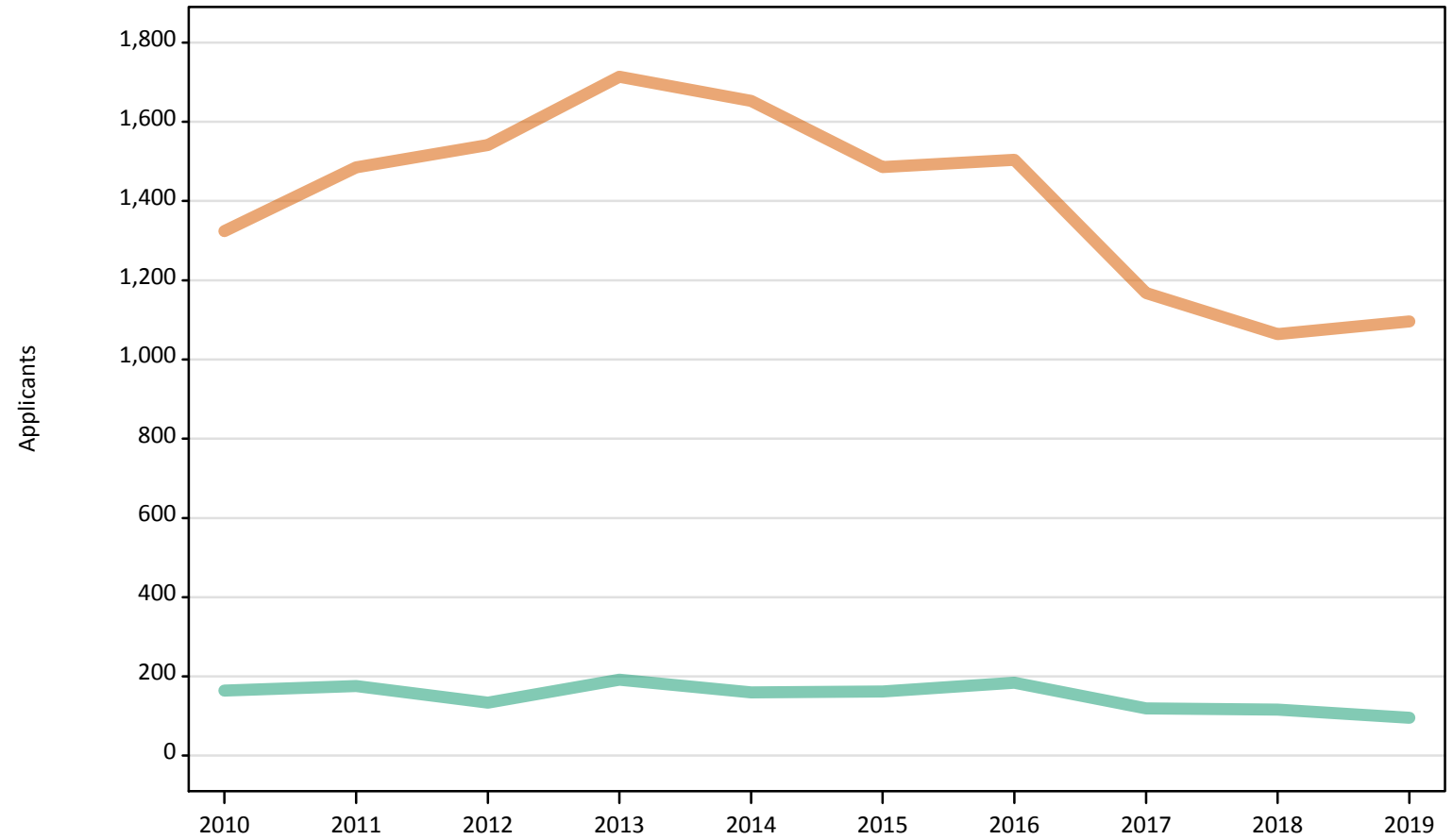
Men
Women



Note: The percentage change is not plotted in the above chart for groups with fewer than 500 applicants in any one cycle.

IB.2.26 Nursing applicants by sex: EU (excluding UK)

Men
Women



IB.2.27 Nursing applicants by age and sex: EU (excluding UK)

Age group and sex		2010	2011	2012	2013	2014	2015	2016	2017	2018	2019
Under 18	Women	80	80	70	80	80	60	60	50	50	70
	Men	0	10	0	10	0	10	0	0	0	10
18	Women	320	340	350	400	350	310	360	250	240	250
	Men	20	20	20	30	20	20	30	20	20	20
19	Women	330	330	350	380	390	360	370	300	280	310
	Men	20	30	20	30	30	30	30	20	30	20
20-24	Women	380	470	490	550	540	490	470	400	350	360
	Men	50	60	40	60	50	50	60	40	40	30
25-29	Women	130	170	160	180	180	160	140	80	70	40
	Men	30	30	20	30	20	20	20	10	10	20
30-34	Women	50	50	50	60	50	40	40	30	30	20
	Men	20	20	10	20	10	10	10	10	10	0
35 and over	Women	40	50	70	60	70	60	60	50	40	50
	Men	20	20	20	30	20	30	30	20	20	10
All ages	Women	1,320	1,490	1,540	1,710	1,650	1,490	1,500	1,170	1,060	1,100
	Men	160	180	130	190	160	160	180	120	120	100

IB.2.28 Nursing applicants by age and sex: EU (excluding UK)

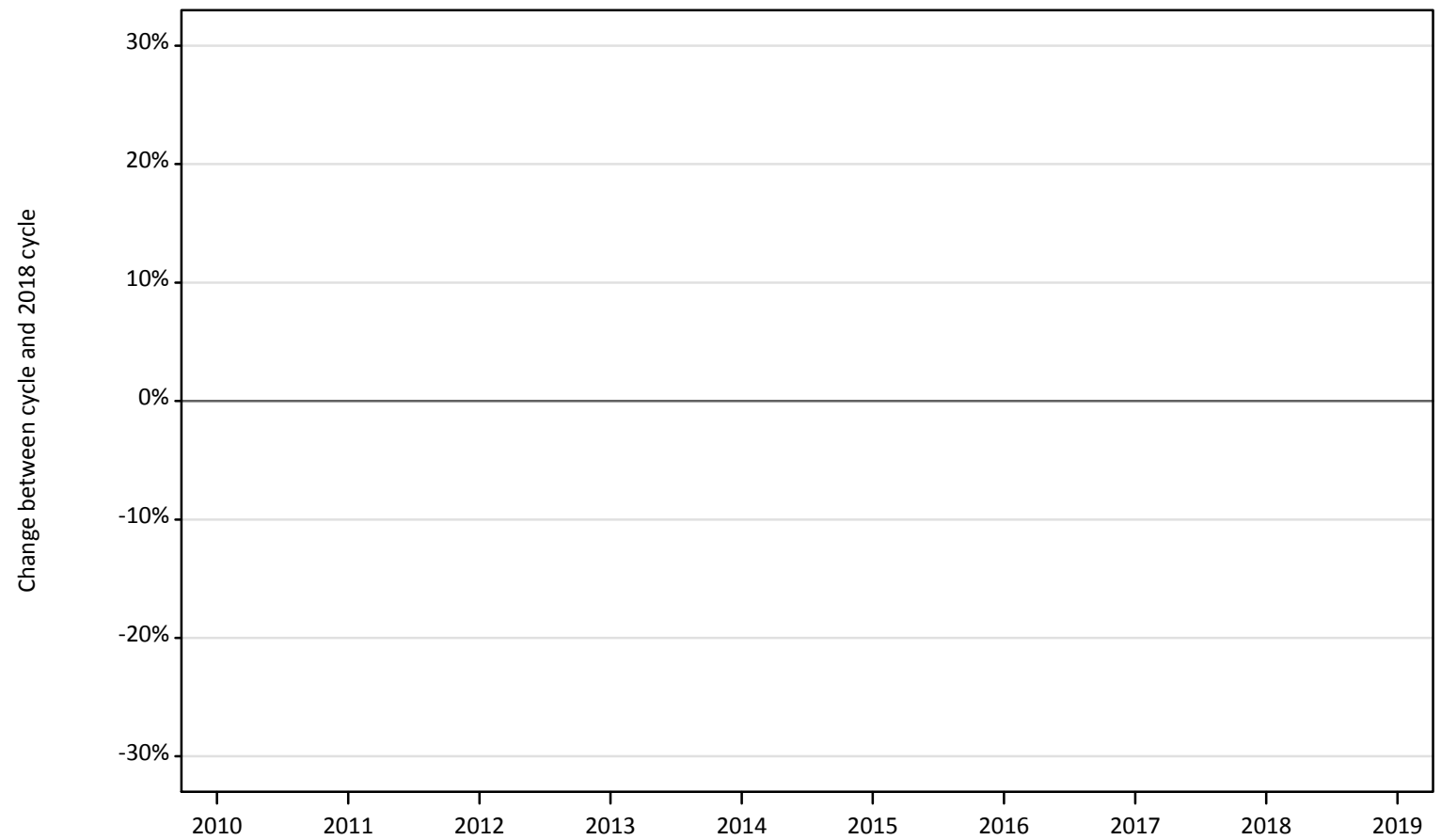
Difference between cycle and 2018 cycle

Age group and sex		2010	2011	2012	2013	2014	2015	2016	2017	2018	2019
Under 18	Women	52%	58%	46%	54%	58%	16%	24%	6%	0%	42%
	Men										
18	Women	35%	44%	48%	71%	49%	31%	52%	7%	0%	5%
	Men	5%	-21%	26%	47%	21%	5%	63%	11%	0%	-21%
19	Women	18%	16%	24%	36%	39%	27%	32%	6%	0%	9%
	Men	-4%	8%	-32%	16%	12%	16%	16%	-8%	0%	-24%
20-24	Women	9%	32%	39%	56%	52%	40%	32%	14%	0%	2%
	Men	47%	58%	19%	64%	50%	33%	53%	6%	0%	-19%
25-29	Women	75%	142%	124%	151%	147%	128%	99%	17%	0%	-39%
	Men	145%	127%	73%	127%	118%	45%	82%	-9%	0%	55%
30-34	Women	71%	61%	65%	97%	65%	32%	32%	3%	0%	-32%
	Men	110%	110%	40%	50%	0%	20%	20%	-50%	0%	
35 and over	Women	-12%	19%	67%	45%	64%	48%	48%	10%	0%	10%
	Men	20%	53%	7%	107%	27%	93%	127%	20%	0%	-47%
All ages	Women	24%	40%	45%	61%	55%	40%	41%	10%	0%	3%
	Men	41%	52%	16%	66%	38%	40%	59%	3%	0%	-17%

Note: The percentage change is not recorded in the above table for groups with fewer than 10 applicants in that cycle or in the 2018 cycle.

IB.2.29 Nursing applicants by sex: Not EU
Difference between cycle and 2018 cycle

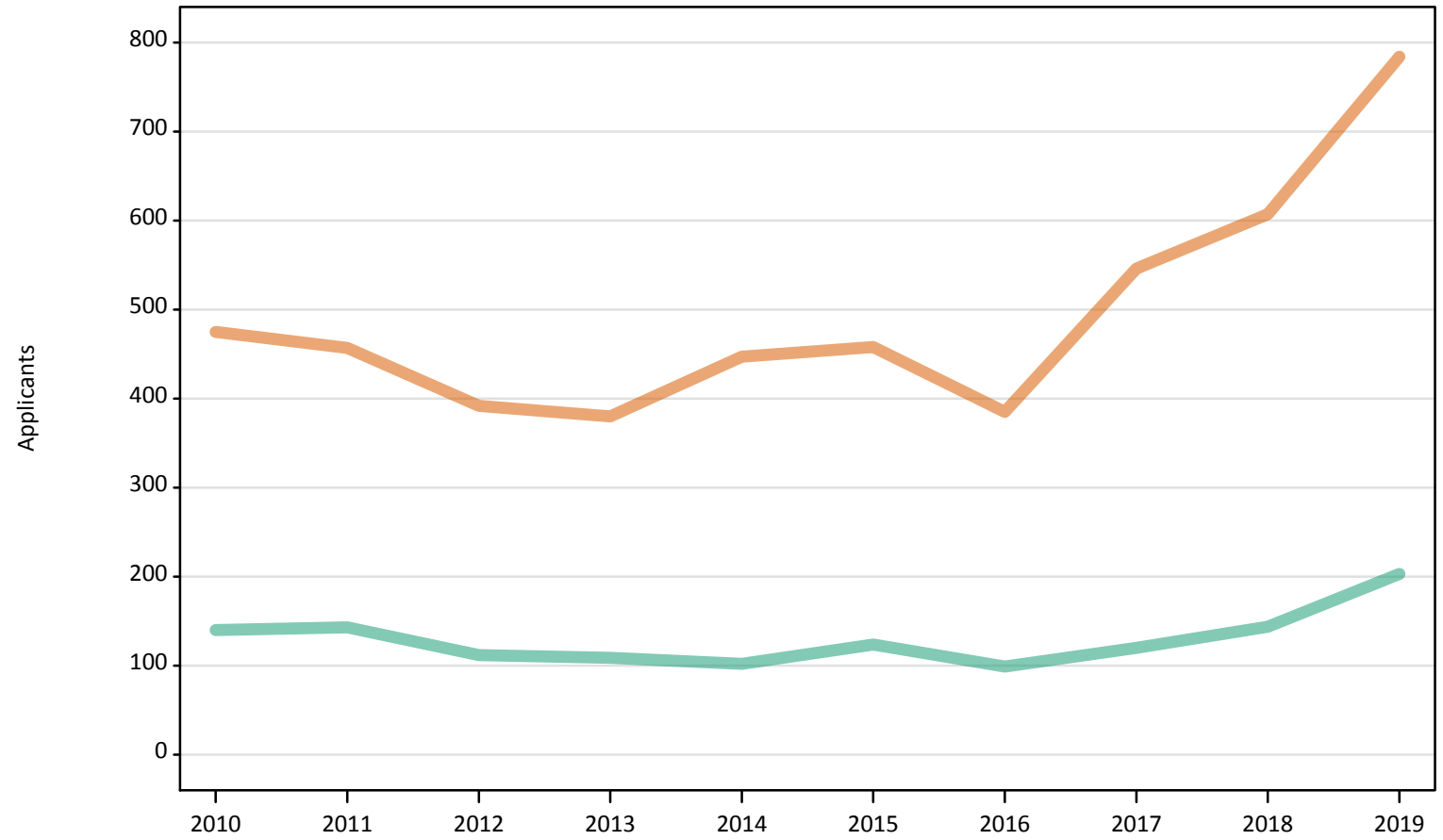
Men
Women



Note: The percentage change is not plotted in the above chart for groups with fewer than 500 applicants in any one cycle.

IB.2.30 Nursing applicants by sex: Not EU

Men
Women



IB.2.31 Nursing applicants by age and sex: Not EU

Age group and sex		2010	2011	2012	2013	2014	2015	2016	2017	2018	2019
Under 18	Women	10	10	10	10	10	10	10	10	10	20
	Men	0	0	0	0	0	0	0	0	0	10
18	Women	40	40	70	70	60	70	60	90	100	130
	Men	0	0	10	10	10	10	10	10	20	10
19	Women	50	50	40	40	50	50	40	60	80	100
	Men	10	10	10	10	10	10	10	10	10	10
20-24	Women	160	140	120	120	150	130	120	150	170	200
	Men	40	50	30	30	30	40	20	30	30	50
25-29	Women	100	110	70	80	80	100	70	90	100	140
	Men	40	40	30	40	20	20	20	20	30	50
30-34	Women	70	50	40	40	40	50	40	70	90	80
	Men	20	30	20	10	10	20	20	30	30	40
35 and over	Women	50	60	40	30	50	50	50	70	60	120
	Men	30	20	20	10	20	20	20	20	30	40
All ages	Women	480	460	390	380	450	460	390	550	610	780
	Men	140	140	110	110	100	120	100	120	140	200

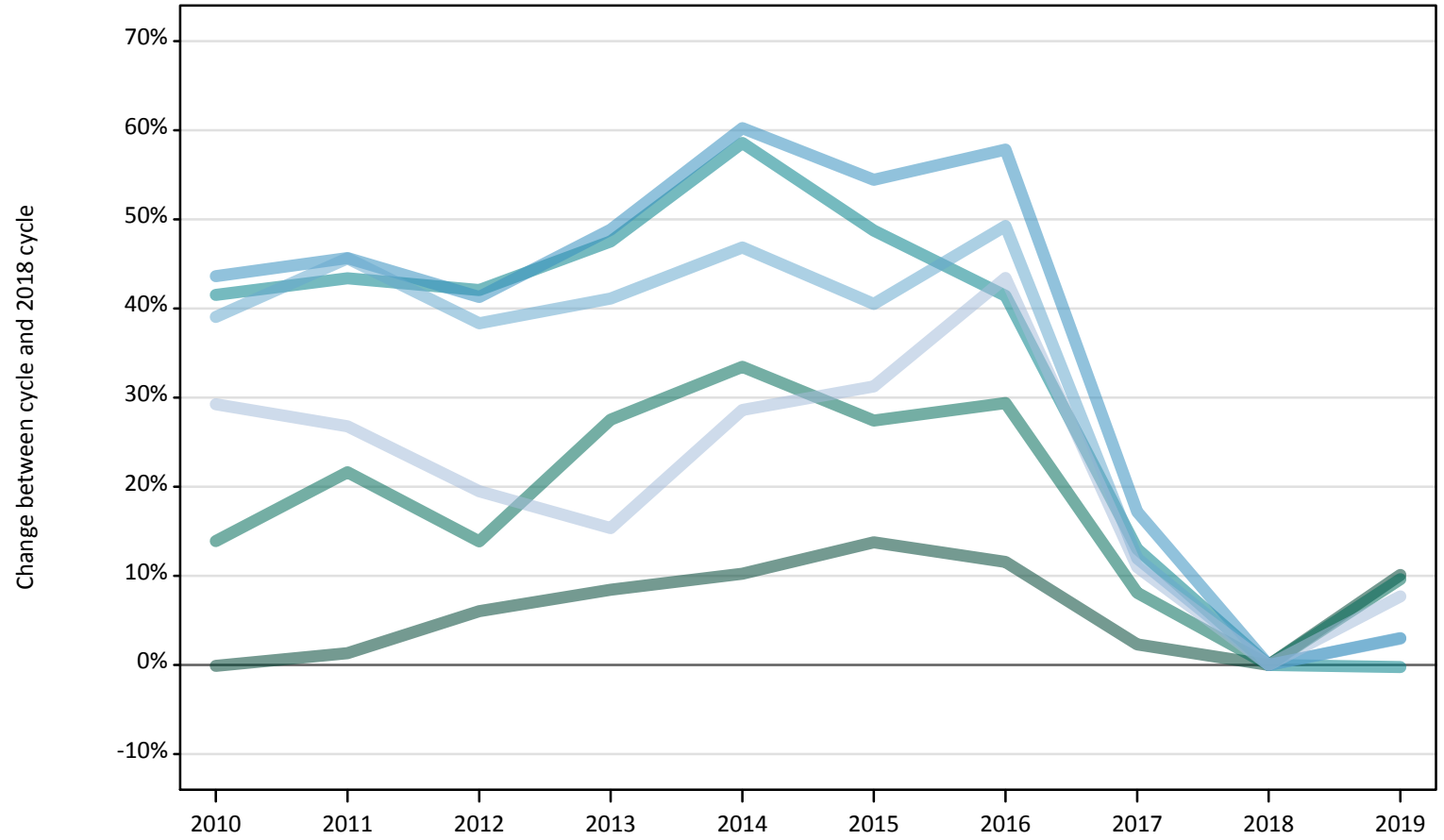
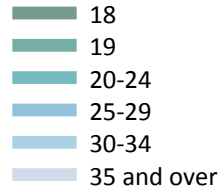
IB.2.32 Nursing applicants by age and sex: Not EU

Difference between cycle and 2018 cycle

Age group and sex		2010	2011	2012	2013	2014	2015	2016	2017	2018	2019
Under 18	Women	-38%	-15%	-38%	-23%	-8%	-23%	-23%	8%	0%	85%
	Men										
18	Women	-63%	-63%	-26%	-34%	-40%	-28%	-44%	-12%	0%	26%
	Men			-44%	-44%	-50%	-38%	-38%	-31%	0%	-25%
19	Women	-36%	-39%	-49%	-53%	-34%	-33%	-53%	-18%	0%	33%
	Men	33%	17%	0%	-17%	17%	50%	83%	67%	0%	133%
20-24	Women	-6%	-17%	-32%	-31%	-12%	-23%	-33%	-12%	0%	14%
	Men	65%	81%	27%	31%	19%	46%	-19%	15%	0%	85%
25-29	Women	1%	9%	-26%	-15%	-19%	-3%	-28%	-5%	0%	39%
	Men	25%	31%	-16%	16%	-34%	-25%	-47%	-25%	0%	41%
30-34	Women	-22%	-39%	-52%	-56%	-53%	-42%	-51%	-20%	0%	-6%
	Men	-31%	-13%	-50%	-63%	-56%	-38%	-50%	-22%	0%	13%
35 and over	Women	-15%	-3%	-35%	-55%	-13%	-23%	-13%	11%	0%	92%
	Men	-17%	-50%	-40%	-60%	-43%	-33%	-27%	-40%	0%	43%
All ages	Women	-22%	-25%	-35%	-37%	-26%	-25%	-37%	-10%	0%	29%
	Men	-3%	-1%	-22%	-24%	-29%	-14%	-31%	-17%	0%	41%

Note: The percentage change is not recorded in the above table for groups with fewer than 10 applicants in that cycle or in the 2018 cycle.

IB.2.33 Nursing applicants by age: All domiciles
Difference between cycle and 2018 cycle



Note: The percentage change is not plotted in the above chart for groups with fewer than 500 applicants in any one cycle.

IB.2.34 Nursing applicants by age: All domiciles

Domicile and age group		2010	2011	2012	2013	2014	2015	2016	2017	2018	2019
All domiciles	Under 18	490	290	150	160	170	150	140	140	120	180
	18	11,330	11,500	12,030	12,300	12,510	12,910	12,660	11,610	11,340	12,490
	19	6,490	6,930	6,490	7,270	7,600	7,260	7,370	6,160	5,700	6,250
	20-24	16,190	16,400	16,250	16,870	18,140	17,010	16,170	12,930	11,440	11,410
	25-29	9,410	9,540	9,260	9,750	10,500	10,120	10,340	7,680	6,550	6,750
	30-34	6,360	6,660	6,330	6,450	6,720	6,430	6,830	5,120	4,570	4,710
	35 and over	10,920	10,710	10,100	9,750	10,870	11,090	12,120	9,380	8,450	9,100
	All ages	61,180	62,020	60,590	62,550	66,490	64,950	65,620	53,010	48,170	50,880

IB.2.35 Nursing applicants by age: All domiciles

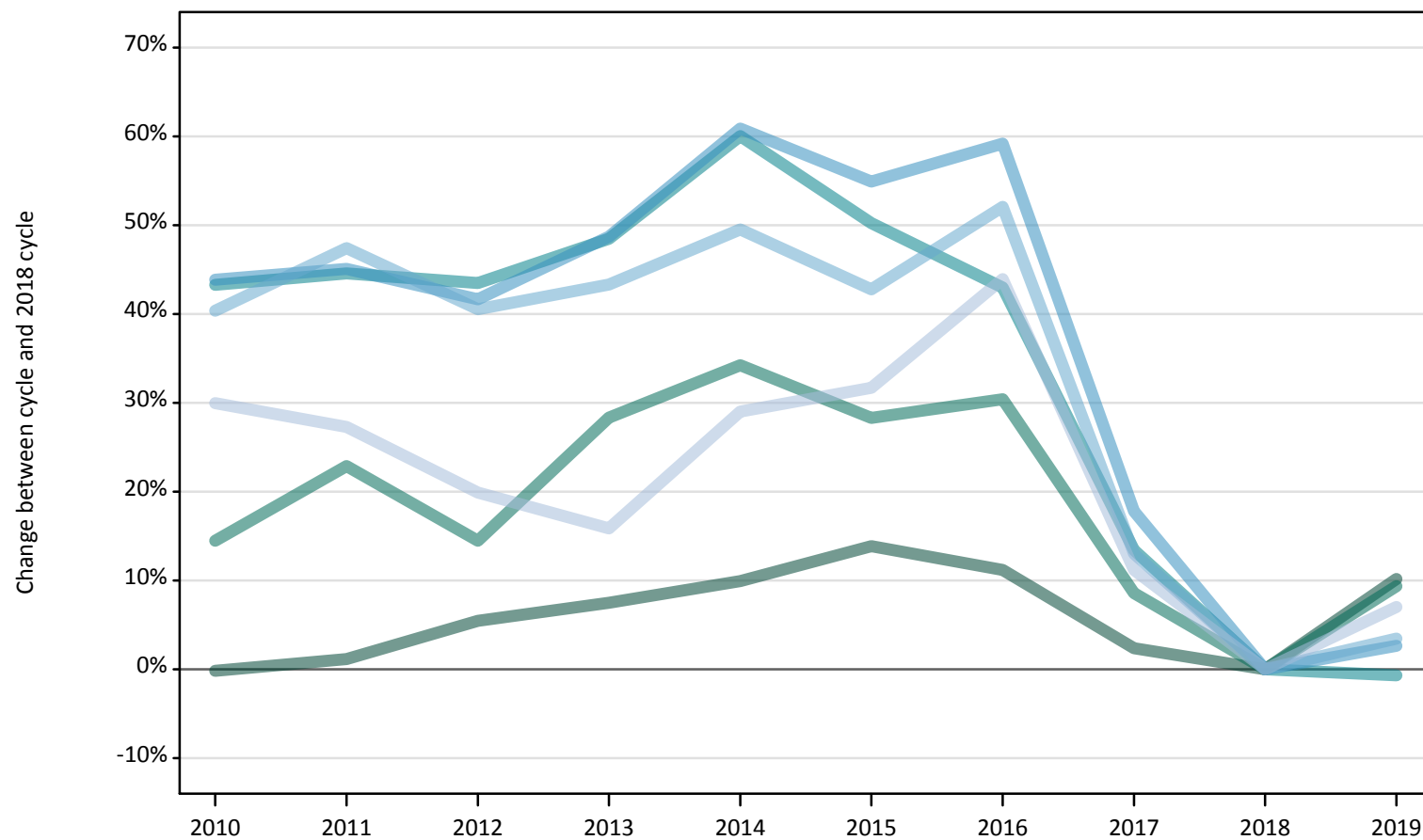
Difference between cycle and 2018 cycle

Domicile and age group		2010	2011	2012	2013	2014	2015	2016	2017	2018	2019
All domiciles	Under 18	308%	139%	27%	33%	41%	22%	18%	18%	0%	48%
	18	-0%	1%	6%	8%	10%	14%	12%	2%	0%	10%
	19	14%	22%	14%	28%	33%	27%	29%	8%	0%	10%
	20-24	42%	43%	42%	48%	59%	49%	41%	13%	0%	-0%
	25-29	44%	46%	41%	49%	60%	54%	58%	17%	0%	3%
	30-34	39%	46%	38%	41%	47%	40%	49%	12%	0%	3%
	35 and over	29%	27%	19%	15%	29%	31%	43%	11%	0%	8%
	All ages	27%	29%	26%	30%	38%	35%	36%	10%	0%	6%

Note: The percentage change is not recorded in the above table for groups with fewer than 10 applicants in that cycle or in the 2018 cycle.

IB.2.36 Nursing applicants by age: UK
Difference between cycle and 2018 cycle

- 18
- 19
- 20-24
- 25-29
- 30-34
- 35 and over



Note: The percentage change is not plotted in the above chart for groups with fewer than 500 applicants in any one cycle.

IB.2.37 Nursing applicants by age: UK

Domicile and age group		2010	2011	2012	2013	2014	2015	2016	2017	2018	2019
UK	Under 18	400	190	70	70	70	70	60	70	50	70
	18	10,960	11,100	11,570	11,800	12,070	12,490	12,200	11,240	10,970	12,090
	19	6,080	6,520	6,080	6,810	7,130	6,810	6,920	5,760	5,310	5,810
	20-24	15,550	15,690	15,570	16,110	17,360	16,300	15,520	12,310	10,850	10,780
	25-29	9,120	9,190	8,980	9,420	10,190	9,820	10,090	7,470	6,340	6,510
	30-34	6,200	6,510	6,210	6,330	6,600	6,300	6,710	4,990	4,420	4,570
	35 and over	10,790	10,560	9,950	9,620	10,710	10,930	11,940	9,230	8,300	8,880
	All ages	59,080	59,760	58,410	60,150	64,130	62,720	63,450	51,050	46,240	48,700

IB.2.38 Nursing applicants by age: UK

Difference between cycle and 2018 cycle

Domicile and age group		2010	2011	2012	2013	2014	2015	2016	2017	2018	2019
UK	Under 18	641%	246%	22%	22%	31%	22%	19%	24%	0%	31%
	18	-0%	1%	5%	8%	10%	14%	11%	2%	0%	10%
	19	14%	23%	14%	28%	34%	28%	30%	9%	0%	9%
	20-24	43%	45%	43%	48%	60%	50%	43%	13%	0%	-1%
	25-29	44%	45%	42%	49%	61%	55%	59%	18%	0%	3%
	30-34	40%	47%	41%	43%	50%	43%	52%	13%	0%	3%
	35 and over	30%	27%	20%	16%	29%	32%	44%	11%	0%	7%
	All ages	28%	29%	26%	30%	39%	36%	37%	10%	0%	5%

Note: The percentage change is not recorded in the above table for groups with fewer than 10 applicants in that cycle or in the 2018 cycle.

IB.2.39 Nursing applicants by age: England

Difference between cycle and 2018 cycle

- 18
- 19
- 20-24
- 25-29
- 30-34
- 35 and over



Note: The percentage change is not plotted in the above chart for groups with fewer than 500 applicants in any one cycle.

IB.2.40 Nursing applicants by age: England

Domicile and age group		2010	2011	2012	2013	2014	2015	2016	2017	2018	2019
England	Under 18	290	130	20	20	20	20	10	20	20	10
	18	8,280	8,380	8,810	9,020	9,310	9,630	9,470	8,540	8,350	9,200
	19	4,950	5,300	4,870	5,500	5,820	5,590	5,580	4,550	4,100	4,390
	20-24	12,950	12,760	12,780	13,010	14,170	13,200	12,510	9,590	8,190	8,120
	25-29	7,610	7,610	7,430	7,700	8,300	7,930	8,220	5,700	4,620	4,770
	30-34	5,300	5,530	5,340	5,340	5,550	5,250	5,570	3,870	3,290	3,300
	35 and over	9,350	9,200	8,700	8,350	9,380	9,530	10,470	7,810	6,690	7,010
	All ages	48,720	48,890	47,950	48,940	52,550	51,160	51,840	40,060	35,260	36,810

IB.2.41 Nursing applicants by age: England

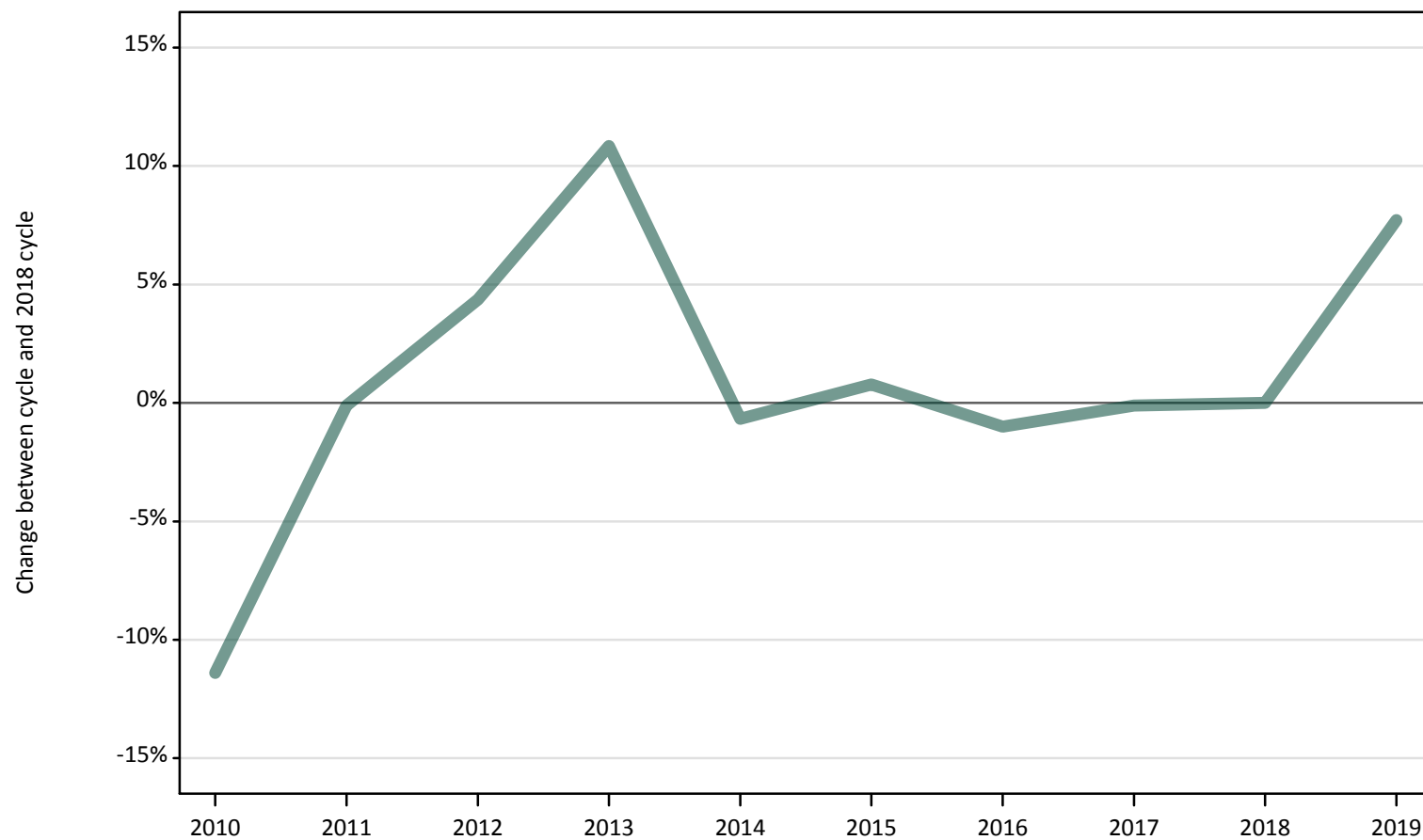
Difference between cycle and 2018 cycle

Domicile and age group		2010	2011	2012	2013	2014	2015	2016	2017	2018	2019
England	Under 18	1600%	641%	12%	18%	6%	12%	-18%	-12%	0%	-35%
	18	-1%	0%	5%	8%	11%	15%	13%	2%	0%	10%
	19	21%	29%	19%	34%	42%	36%	36%	11%	0%	7%
	20-24	58%	56%	56%	59%	73%	61%	53%	17%	0%	-1%
	25-29	65%	65%	61%	67%	80%	72%	78%	23%	0%	3%
	30-34	61%	68%	62%	62%	69%	60%	69%	18%	0%	0%
	35 and over	40%	37%	30%	25%	40%	42%	56%	17%	0%	5%
	All ages	38%	39%	36%	39%	49%	45%	47%	14%	0%	4%

Note: The percentage change is not recorded in the above table for groups with fewer than 10 applicants in that cycle or in the 2018 cycle.

IB.2.42 Nursing applicants by age: Northern Ireland
Difference between cycle and 2018 cycle

- 18
- 19
- 20-24
- 25-29
- 30-34
- 35 and over



Note: The percentage change is not plotted in the above chart for groups with fewer than 500 applicants in any one cycle.

IB.2.43 Nursing applicants by age: Northern Ireland

Domicile and age group		2010	2011	2012	2013	2014	2015	2016	2017	2018	2019
Northern Ireland	Under 18	10	0	0	0	0	0	0	0	0	0
	18	790	890	930	990	890	900	890	890	900	960
	19	210	280	310	440	400	370	410	390	350	420
	20-24	370	470	460	800	770	730	710	660	580	570
	25-29	150	170	160	340	360	340	350	280	260	250
	30-34	60	80	70	180	190	180	190	170	150	190
	35 and over	90	90	70	190	160	190	200	190	170	210
	All ages	1,680	1,970	2,010	2,950	2,770	2,710	2,750	2,590	2,400	2,610

IB.2.44 Nursing applicants by age: Northern Ireland

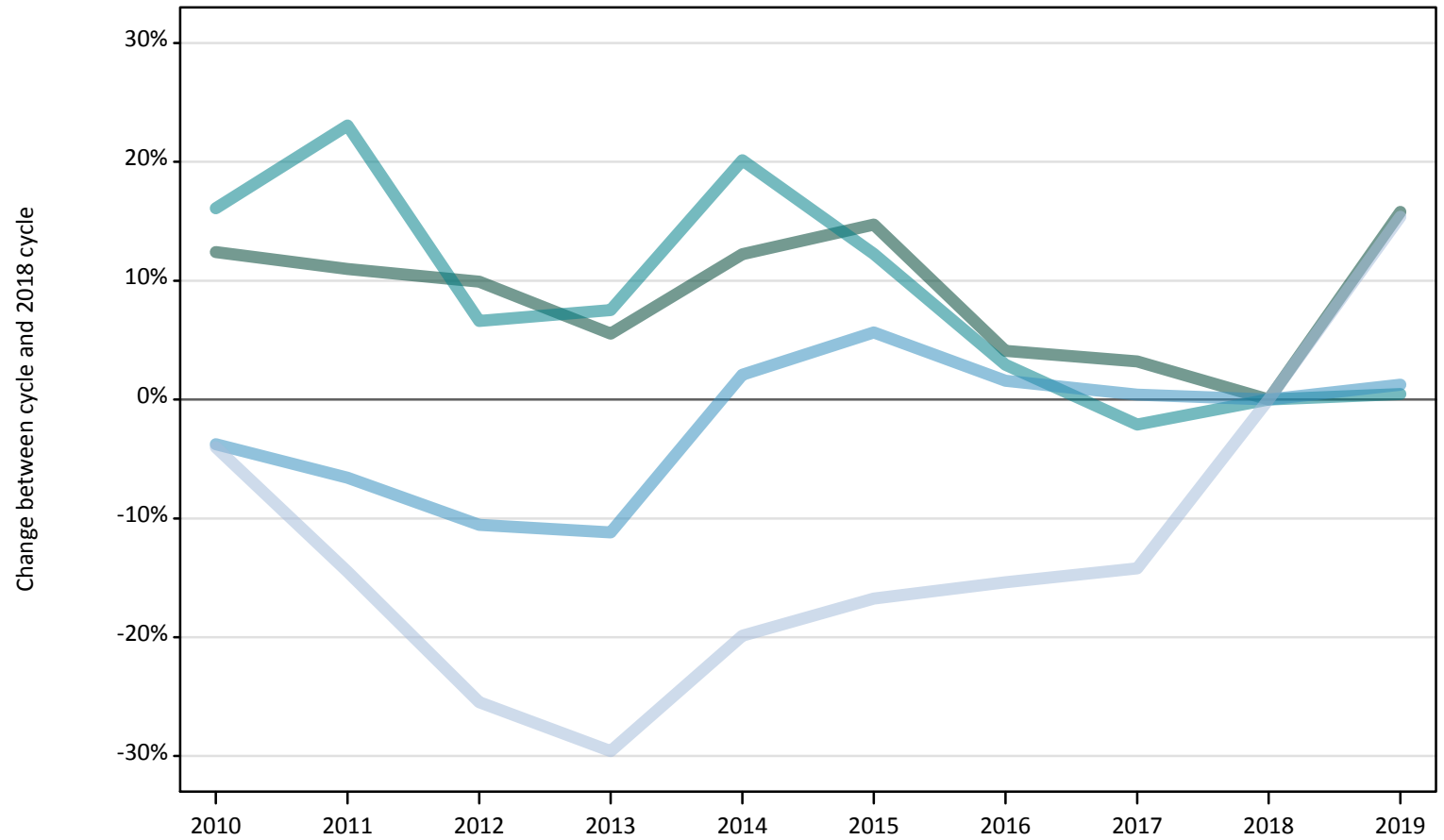
Difference between cycle and 2018 cycle

Domicile and age group		2010	2011	2012	2013	2014	2015	2016	2017	2018	2019
Northern Ireland	Under 18										
	18	-11%	-0%	4%	11%	-1%	1%	-1%	-0%	0%	8%
	19	-40%	-21%	-14%	23%	13%	3%	17%	11%	0%	18%
	20-24	-36%	-19%	-20%	40%	33%	27%	23%	15%	0%	-1%
	25-29	-42%	-34%	-37%	33%	41%	32%	35%	9%	0%	-2%
	30-34	-59%	-48%	-51%	24%	27%	22%	29%	17%	0%	27%
	35 and over	-45%	-48%	-58%	14%	-2%	13%	21%	11%	0%	27%
	All ages	-30%	-18%	-16%	23%	15%	13%	15%	8%	0%	9%

Note: The percentage change is not recorded in the above table for groups with fewer than 10 applicants in that cycle or in the 2018 cycle.

IB.2.45 Nursing applicants by age: Scotland
Difference between cycle and 2018 cycle

- 18
- 19
- 20-24
- 25-29
- 30-34
- 35 and over



Note: The percentage change is not plotted in the above chart for groups with fewer than 500 applicants in any one cycle.

IB.2.46 Nursing applicants by age: Scotland

Domicile and age group		2010	2011	2012	2013	2014	2015	2016	2017	2018	2019
Scotland	Under 18	100	60	40	40	50	40	40	50	40	60
	18	1,260	1,240	1,230	1,180	1,260	1,290	1,170	1,160	1,120	1,300
	19	630	580	580	570	590	530	560	490	510	580
	20-24	1,550	1,640	1,420	1,430	1,600	1,490	1,370	1,300	1,330	1,340
	25-29	920	890	860	850	980	1,010	970	960	960	970
	30-34	570	620	480	500	570	600	620	630	630	740
	35 and over	980	870	760	720	820	850	860	880	1,020	1,180
	All ages	6,000	5,910	5,380	5,290	5,860	5,820	5,600	5,470	5,600	6,160

IB.2.47 Nursing applicants by age: Scotland

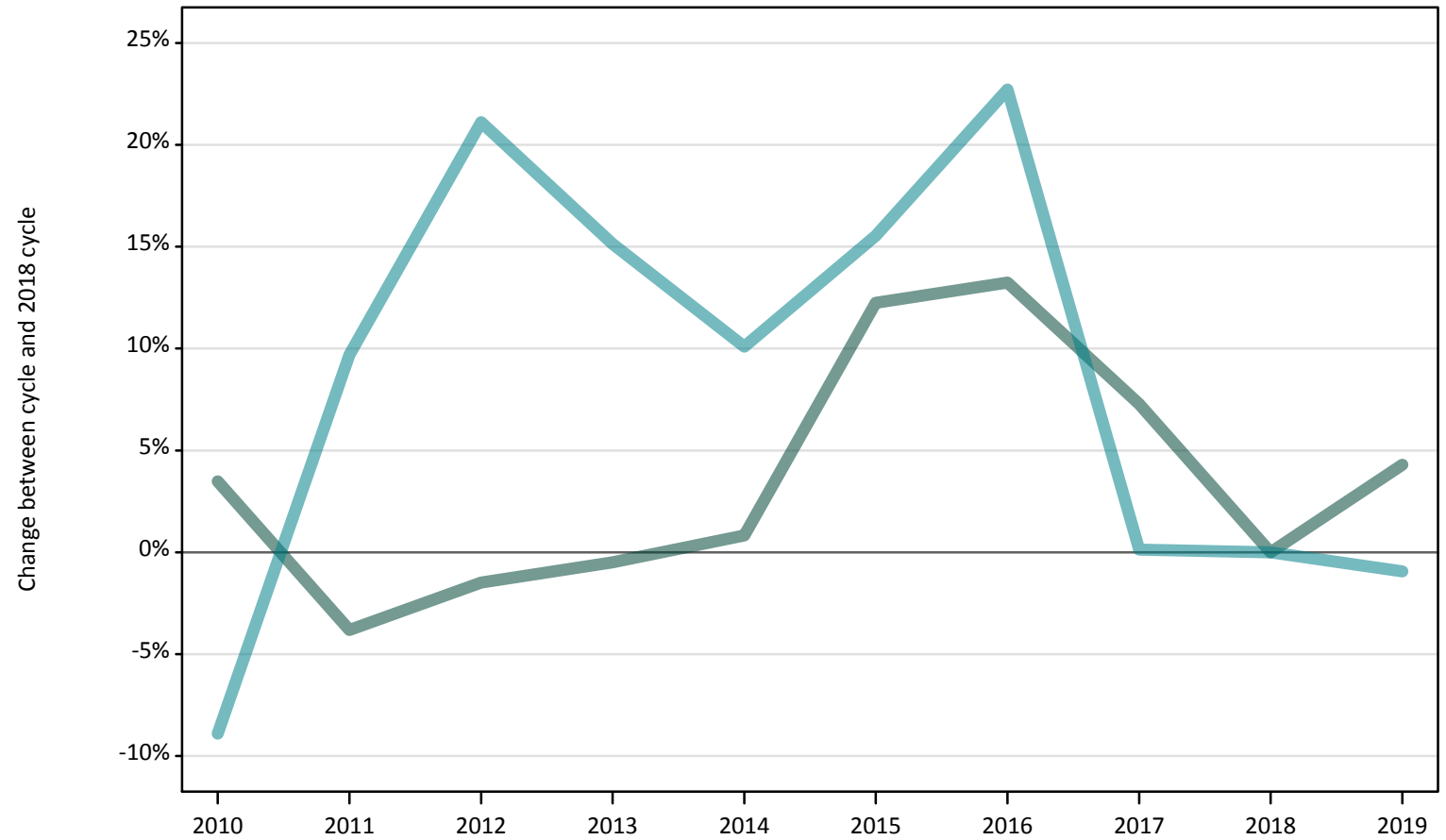
Difference between cycle and 2018 cycle

Domicile and age group		2010	2011	2012	2013	2014	2015	2016	2017	2018	2019
Scotland	Under 18	172%	64%	19%	14%	42%	22%	19%	33%	0%	56%
	18	12%	11%	10%	6%	12%	15%	4%	3%	0%	16%
	19	24%	15%	14%	12%	16%	5%	11%	-4%	0%	15%
	20-24	16%	23%	7%	8%	20%	12%	3%	-2%	0%	0%
	25-29	-4%	-7%	-11%	-11%	2%	6%	2%	0%	0%	1%
	30-34	-10%	-2%	-23%	-20%	-10%	-5%	-1%	1%	0%	17%
	35 and over	-4%	-14%	-25%	-30%	-20%	-17%	-15%	-14%	0%	15%
	All ages	7%	5%	-4%	-6%	5%	4%	0%	-2%	0%	10%

Note: The percentage change is not recorded in the above table for groups with fewer than 10 applicants in that cycle or in the 2018 cycle.

IB.2.48 Nursing applicants by age: Wales
Difference between cycle and 2018 cycle

- 18
- 19
- 20-24
- 25-29
- 30-34
- 35 and over



Note: The percentage change is not plotted in the above chart for groups with fewer than 500 applicants in any one cycle.

IB.2.49 Nursing applicants by age: Wales

Domicile and age group		2010	2011	2012	2013	2014	2015	2016	2017	2018	2019
Wales	Under 18	10	0	0	0	0	0	0	0	0	0
	18	630	580	600	600	610	680	680	650	600	630
	19	290	360	320	310	320	320	360	330	350	420
	20-24	690	830	910	870	830	870	920	750	750	750
	25-29	430	520	530	530	550	540	550	530	500	520
	30-34	270	290	310	310	300	280	340	320	350	340
	35 and over	370	410	420	350	350	360	410	360	420	480
	All ages	2,680	2,990	3,090	2,980	2,950	3,040	3,270	2,940	2,980	3,130

IB.2.50 Nursing applicants by age: Wales

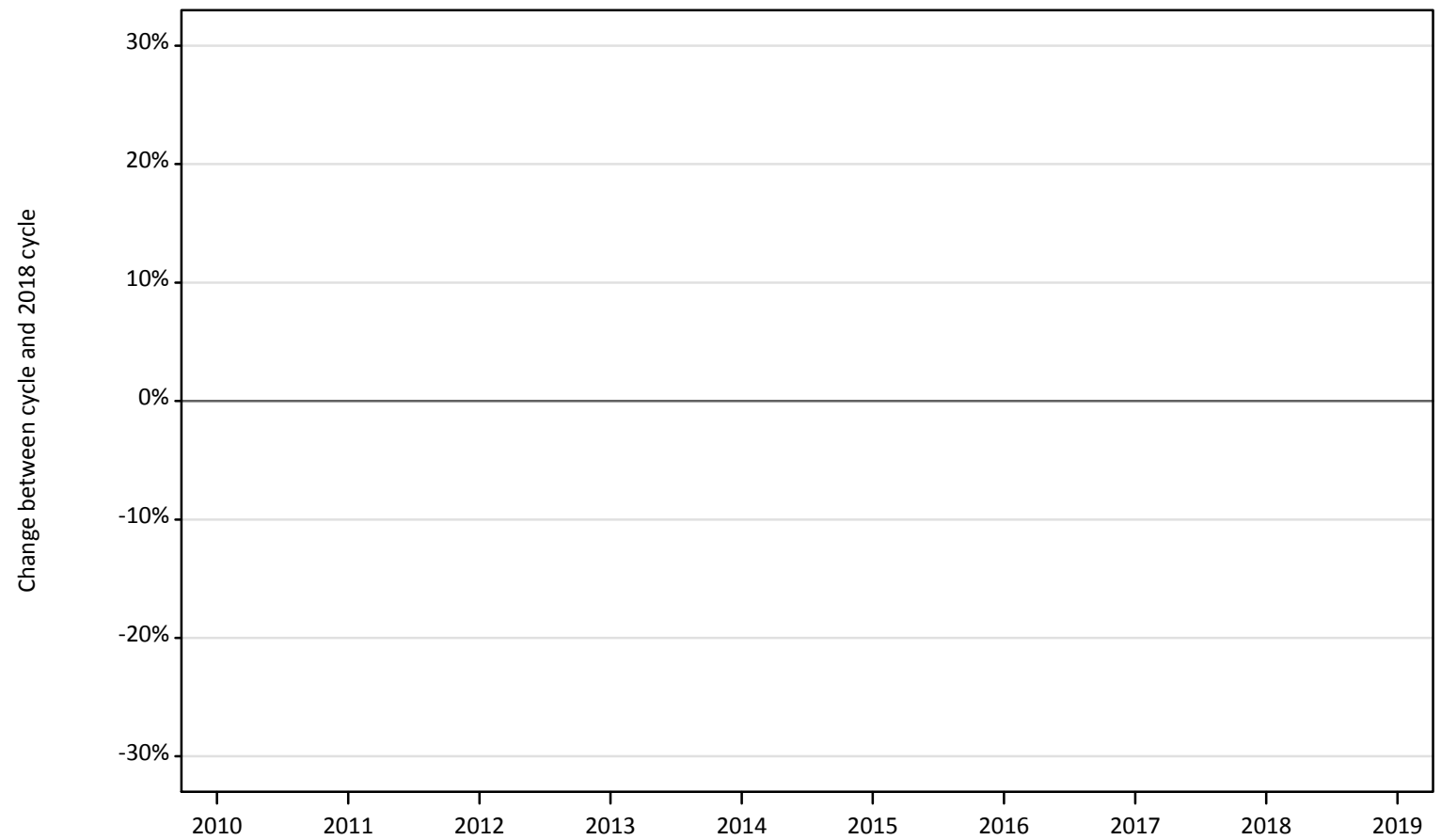
Difference between cycle and 2018 cycle

Domicile and age group		2010	2011	2012	2013	2014	2015	2016	2017	2018	2019
Wales	Under 18										
	18	3%	-4%	-1%	-0%	1%	12%	13%	7%	0%	4%
	19	-18%	5%	-7%	-10%	-9%	-8%	4%	-5%	0%	19%
	20-24	-9%	10%	21%	15%	10%	16%	23%	0%	0%	-1%
	25-29	-14%	4%	5%	6%	10%	8%	9%	5%	0%	3%
	30-34	-24%	-18%	-12%	-13%	-16%	-22%	-5%	-11%	0%	-3%
	35 and over	-12%	-3%	-0%	-16%	-17%	-15%	-1%	-14%	0%	15%
	All ages	-10%	0%	4%	-0%	-1%	2%	10%	-1%	0%	5%

Note: The percentage change is not recorded in the above table for groups with fewer than 10 applicants in that cycle or in the 2018 cycle.

IB.2.51 Nursing applicants by age: EU (excluding UK)
Difference between cycle and 2018 cycle

- 18
- 19
- 20-24
- 25-29
- 30-34
- 35 and over



Note: The percentage change is not plotted in the above chart for groups with fewer than 500 applicants in any one cycle.

IB.2.52 Nursing applicants by age: EU (excluding UK)

Domicile and age group		2010	2011	2012	2013	2014	2015	2016	2017	2018	2019
EU (excluding UK)	Under 18	80	90	70	80	80	70	70	60	50	80
	18	340	360	370	430	370	330	390	270	260	260
	19	360	350	370	410	420	390	400	320	310	330
	20-24	440	520	530	610	590	540	520	440	390	390
	25-29	150	200	180	210	200	180	160	90	80	60
	30-34	70	70	70	80	60	50	50	40	40	20
	35 and over	60	70	90	90	90	90	100	60	60	50
	All ages	1,490	1,660	1,680	1,910	1,810	1,650	1,690	1,290	1,180	1,190

IB.2.53 Nursing applicants by age: EU (excluding UK)

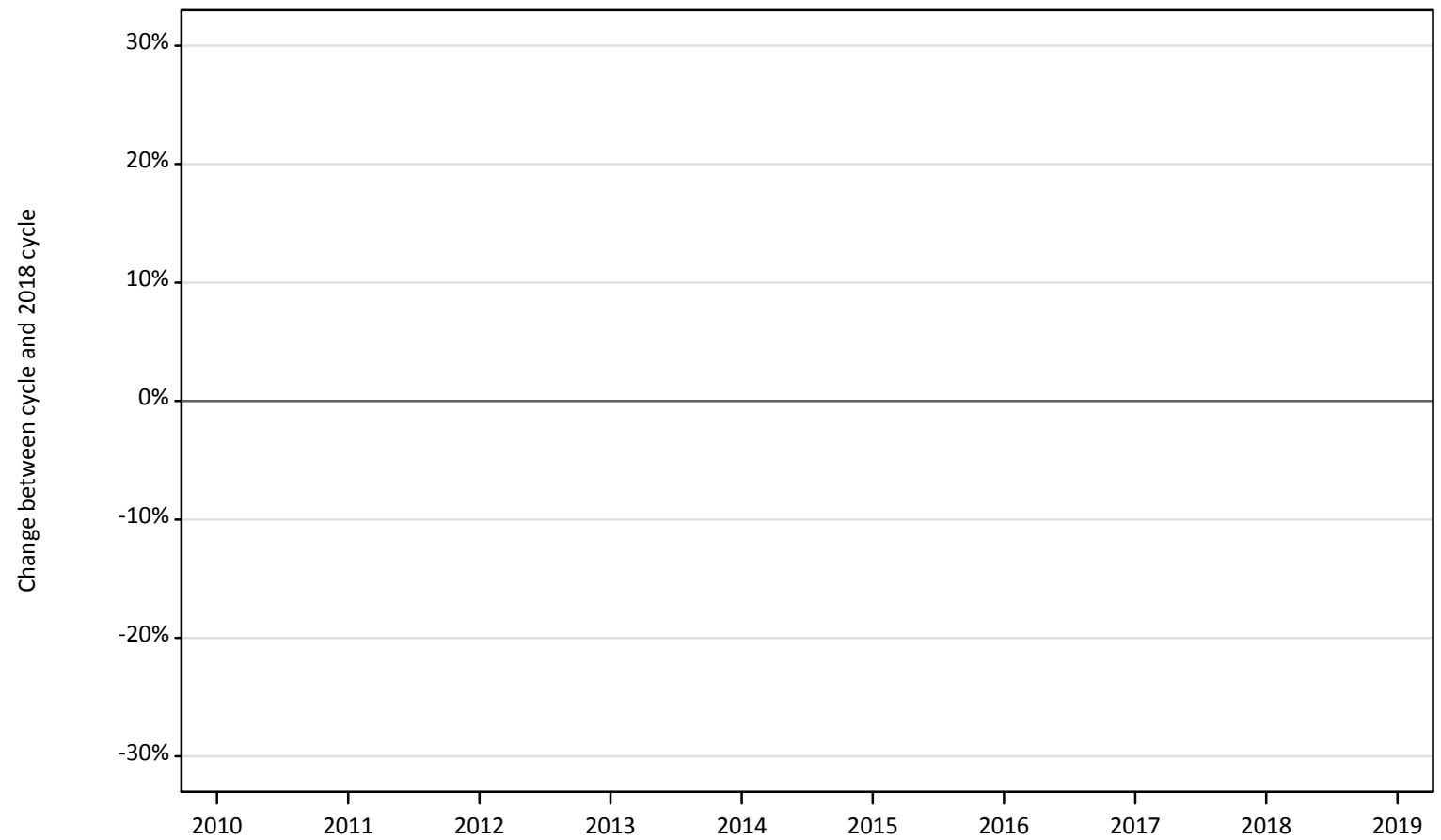
Difference between cycle and 2018 cycle

Domicile and age group		2010	2011	2012	2013	2014	2015	2016	2017	2018	2019
EU (excluding UK)	Under 18	54%	74%	48%	64%	62%	32%	30%	14%	0%	52%
	18	33%	40%	47%	69%	47%	29%	53%	7%	0%	3%
	19	16%	15%	19%	34%	37%	26%	31%	5%	0%	6%
	20-24	12%	35%	37%	57%	52%	39%	34%	13%	0%	0%
	25-29	84%	140%	117%	148%	143%	117%	96%	13%	0%	-27%
	30-34	80%	73%	59%	85%	49%	29%	29%	-10%	0%	-41%
	35 and over	-4%	28%	51%	61%	54%	60%	68%	12%	0%	-5%
	All ages	26%	41%	42%	62%	54%	40%	43%	9%	0%	1%

Note: The percentage change is not recorded in the above table for groups with fewer than 10 applicants in that cycle or in the 2018 cycle.

IB.2.54 Nursing applicants by age: Not EU
Difference between cycle and 2018 cycle

- 18
- 19
- 20-24
- 25-29
- 30-34
- 35 and over



Note: The percentage change is not plotted in the above chart for groups with fewer than 500 applicants in any one cycle.

IB.2.55 Nursing applicants by age: Not EU

Domicile and age group		2010	2011	2012	2013	2014	2015	2016	2017	2018	2019
Not EU	Under 18	10	10	10	10	20	10	10	20	20	30
	18	40	40	80	80	70	80	70	100	120	140
	19	60	50	50	40	60	60	50	70	80	120
	20-24	210	190	150	150	180	170	140	180	200	240
	25-29	140	150	100	120	100	120	90	120	130	180
	30-34	90	80	60	50	50	70	60	90	120	120
	35 and over	80	80	60	40	70	70	80	90	90	160
	All ages	620	600	500	490	550	580	480	670	750	990

IB.2.56 Nursing applicants by age: Not EU

Difference between cycle and 2018 cycle

Domicile and age group		2010	2011	2012	2013	2014	2015	2016	2017	2018	2019
Not EU	Under 18	-47%	-27%	-27%	-33%	7%	-13%	-20%	7%	0%	93%
	18	-66%	-65%	-28%	-35%	-41%	-29%	-43%	-15%	0%	19%
	19	-30%	-35%	-45%	-50%	-30%	-27%	-43%	-12%	0%	40%
	20-24	4%	-4%	-24%	-23%	-8%	-14%	-31%	-9%	0%	23%
	25-29	7%	15%	-24%	-8%	-23%	-8%	-33%	-10%	0%	40%
	30-34	-25%	-32%	-51%	-58%	-54%	-41%	-50%	-21%	0%	-1%
	35 and over	-15%	-18%	-37%	-57%	-23%	-26%	-17%	-5%	0%	76%
	All ages	-18%	-20%	-33%	-35%	-27%	-23%	-36%	-11%	0%	31%

Note: The percentage change is not recorded in the above table for groups with fewer than 10 applicants in that cycle or in the 2018 cycle.

IB.2.57 Technical notes and definitions

Applicants have been able to submit applications for all 2019 courses since early September.

Applicants who submit their applications to UCAS by the January deadline are considered 'on time' applicants for the large majority of courses offered through UCAS. Some art and design courses have a later deadline of 24 March. By definition all main scheme applications have been received by the 30 June deadline.

Subject group 'B7' covers courses related to nursing. These additional tables include applicants who made at least one choice to a 'B7' course by the January deadline. The primary deadline applicant statistics, which include applicants to all courses, are available on the UCAS website.

Counts of the number of applicants reported have been rounded to the nearest 10 applicants, this may result in instances where totals do not equal the sum of the components. Proportional changes have been rounded to the nearest whole percentage point.

In 2014, the Croatia classification changed from Not EU to EU (excluding UK). In order to present an accurate time series, Croatia has been consistently classified as EU (excluding UK). This will result in differences with data published prior to 2019.

Age

This statistical release uses country-specific age definitions which align with the cut off points for school/college cohorts within the different administrations of the UK. For England and Wales ages are defined on the 31 August, for Northern Ireland on the 1 July and for Scotland on the 28 February the following year. Defining ages in this way matches the assignment of children to school cohorts. For applicants outside of the UK the cohort cut off for England and Wales has been used.

Applicant

A person who has made an application in the UCAS system during the cycle reported (including applications for deferred entry). Records of prior acceptance (RPAs) are excluded.

Application

An application to a course at a provider made by an applicant in the UCAS main scheme. Applicants may make up to five main scheme applications.

Country of provider

An applicant may be counted once for each provider country they have applied to in the main scheme. If an applicant has applied to providers in multiple countries then the applicant is counted once within each country of provider applied to.

Domicile

Declared area of permanent residence. The Channel Islands and the Isle of Man have been assigned as 'Not EU'.

Ethnic group

High level grouping of ethnic origin as declared by the applicant: 'Asian', 'Black', 'Mixed', 'White', 'Other', 'Unknown'.

First time applicant

An applicant that did not apply to the UCAS scheme in the previous cycle.

Main scheme

The main UCAS application scheme through which up to five providers/courses can be applied to. This opens in September and closes to new applications on 30 June the following year.

Reapplicant

An applicant that applied to the UCAS scheme in the previous cycle.

Sex

As declared by the applicant.

IMD 2015

The Index of Multiple Deprivation for 2015 identifies small area concentrations of multiple deprivation across all of England, providing a relative measure of deprivation amongst small areas (data zones). When reporting by IMD 2015, the IMD 2015 is used to group areas in each year in the times series.

NIMDM 2017

The Northern Ireland Multiple Deprivation Measure for 2017 identifies small area concentrations of multiple deprivation across all of Northern Ireland, providing a relative measure of deprivation amongst small areas (data zones). When reporting by NIMDM 2017, the NIMDM 2017 is used to group areas in each year in the times series.

SIMD 2012

The Scottish Index of Multiple Deprivation for 2012 identifies small area concentrations of multiple deprivation across all of Scotland, providing a relative measure of deprivation among small areas (data zones). When reporting by SIMD 2012, the SIMD 2012 is used to group areas in each year in the times series.

SIMD 2016

The Scottish Index of Multiple Deprivation for 2016 identifies small area concentrations of multiple deprivation across all of Scotland, providing a relative measure of deprivation among small areas (data zones). When reporting by SIMD 2016, the SIMD 2016 is used to group areas in each year in the times series.

SIMD 2012/2016

Combination of the SIMD measures created in 2012 and 2016. SIMD 2012 is applied to all years before 2017, and SIMD 2016 is applied to years 2017 and onwards.

WIMD 2014

The Welsh Index of Multiple Deprivation identifies small area concentrations of multiple deprivation across all of Wales, providing a relative measure of deprivation among small areas (data zones). In this report, the WIMD 2014 has been used to group areas in each year in the times series.

POLAR4

Developed by HEFCE and classifies small areas across the UK into five groups, according to their level of young participation in HE. Each of these groups represents around 20 per cent of young people, and is ranked from quintile 1 (areas with the lowest young participation rates, considered as the most disadvantaged) to quintile 5 (highest young participation rates, considered most advantaged).

Tariff Group of provider

Providers are grouped as higher, medium or lower tariff based on their average levels of attainment of their accepted applicants (summarised through UCAS Tariff points) in recent cycles. Each group of providers accounted for around a third of all UK 18 year old acceptances in recent cycles.

Subject group

The JACS3 classification used to classify courses into subject groups. With the introduction of HECoS for the 2019 cycle, new courses that were classified using HECoS instead of JACS have been allocated modelled JACS3 values.

Subject group (HECoS)

The CAH classification used to categorise HECoS course subject codes into subject groups. A course may be associated with up to 5 individual subject codes and their respective percentage weight. For this analysis, application totals for subject groups have been calculated by apportioning course applications as weighted by subject group.