

# Daily Clearing Analysis: Age

**Analysis at 00:05 on Wednesday 29 August 2018 (13 days after A level results day)**

**C.1 Placed applicants by country of domicile and age group, 2018 cycle (13 days after A level results day)**

Domicile of applicant	Age group				
	17 and under	18	19	20 to 24	25 and over
England	680	202,780	67,370	47,670	29,000
Northern Ireland	30	8,120	2,360	2,410	800
Scotland	510	14,610	4,560	8,280	6,590
Wales	30	10,100	3,310	2,750	2,160
UK	1,240	235,620	77,600	61,110	38,550

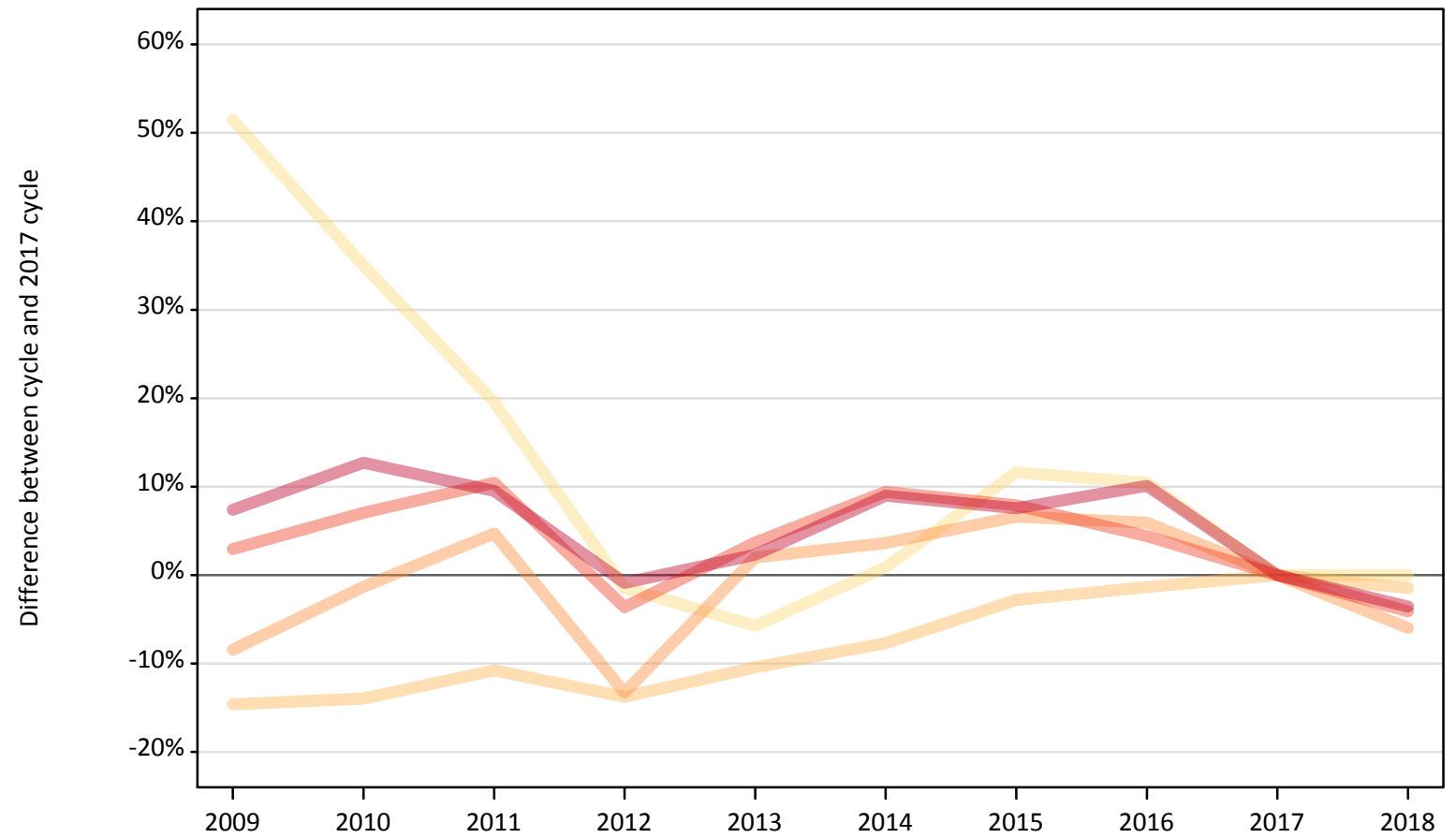
**C.2 Proportion of 18 year old population placed by country of domicile, 2018 cycle (13 days after A level results day)**

Domicile of applicant	Age group	2018
England	18	33.3%
Northern Ireland	18	35.0%
Scotland	18	26.3%
Wales	18	29.4%

### C.3 Placed applicants from England by age group at 13 days after A level results day

Selected age groups: difference between cycle and 2017 cycle

- 17 and under
- 18
- 19
- 20 to 24
- 25 and over



Note: The percentage change is not plotted in the above chart for groups with fewer than 30 placed applicants in any one cycle.

#### C.4 Placed applicants from England by age group at 13 days after A level results day

All age groups

Domicile of applicant	Age group	2009	2010	2011	2012	2013	2014	2015	2016	2017	2018
England	17 and under	1,030	920	810	670	640	690	760	750	680	680
	18	175,770	177,050	183,600	177,510	184,310	189,980	200,030	203,020	205,810	202,780
	19	65,600	70,700	75,040	62,140	73,090	74,240	76,380	75,900	71,660	67,370
	20 to 24	51,180	53,220	54,910	47,920	51,560	54,400	53,640	51,920	49,720	47,670
	25 and over	32,290	33,890	32,930	29,800	30,760	32,770	32,340	33,100	30,070	29,000

#### C.5 Placed applicants from England by age group at 13 days after A level results day

Selected age groups: difference between cycle and 2017 cycle

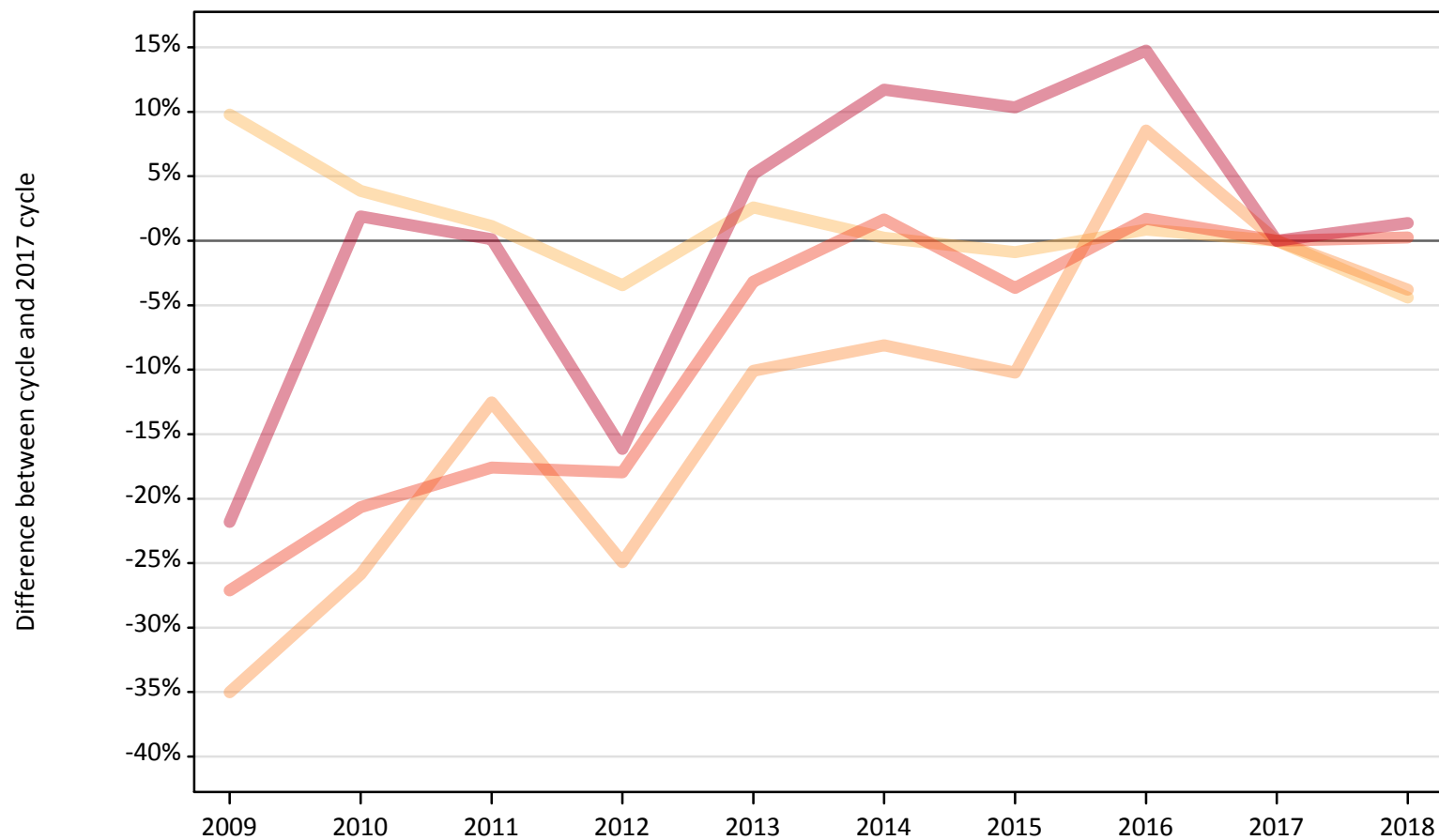
Domicile of applicant	Age group	2009	2010	2011	2012	2013	2014	2015	2016	2017	2018
England	17 and under	51%	35%	20%	-1%	-6%	1%	12%	10%	0%	0%
	18	-15%	-14%	-11%	-14%	-10%	-8%	-3%	-1%	0%	-1%
	19	-8%	-1%	5%	-13%	2%	4%	7%	6%	0%	-6%
	20 to 24	3%	7%	10%	-4%	4%	9%	8%	4%	0%	-4%
	25 and over	7%	13%	10%	-1%	2%	9%	8%	10%	0%	-4%

Note: The percentage change is not recorded in the above table for groups with fewer than 10 placed applicants in that cycle or in the 2017 cycle.

## C.6 Placed applicants from Northern Ireland by age group at 13 days after A level results day

Selected age groups: difference between cycle and 2017 cycle

- 17 and under
- 18
- 19
- 20 to 24
- 25 and over



Note: The percentage change is not plotted in the above chart for groups with fewer than 30 placed applicants in any one cycle.

### C.7 Placed applicants from Northern Ireland by age group at 13 days after A level results day

All age groups

Domicile of applicant	Age group	2009	2010	2011	2012	2013	2014	2015	2016	2017	2018
Northern Ireland	17 and under	50	40	40	40	20	20	20	30	20	30
	18	9,330	8,820	8,590	8,200	8,710	8,510	8,420	8,570	8,500	8,120
	19	1,600	1,820	2,150	1,840	2,210	2,260	2,210	2,670	2,460	2,360
	20 to 24	1,750	1,910	1,980	1,970	2,330	2,450	2,320	2,450	2,410	2,410
	25 and over	620	810	790	670	830	890	880	910	790	800

### C.8 Placed applicants from Northern Ireland by age group at 13 days after A level results day

Selected age groups: difference between cycle and 2017 cycle

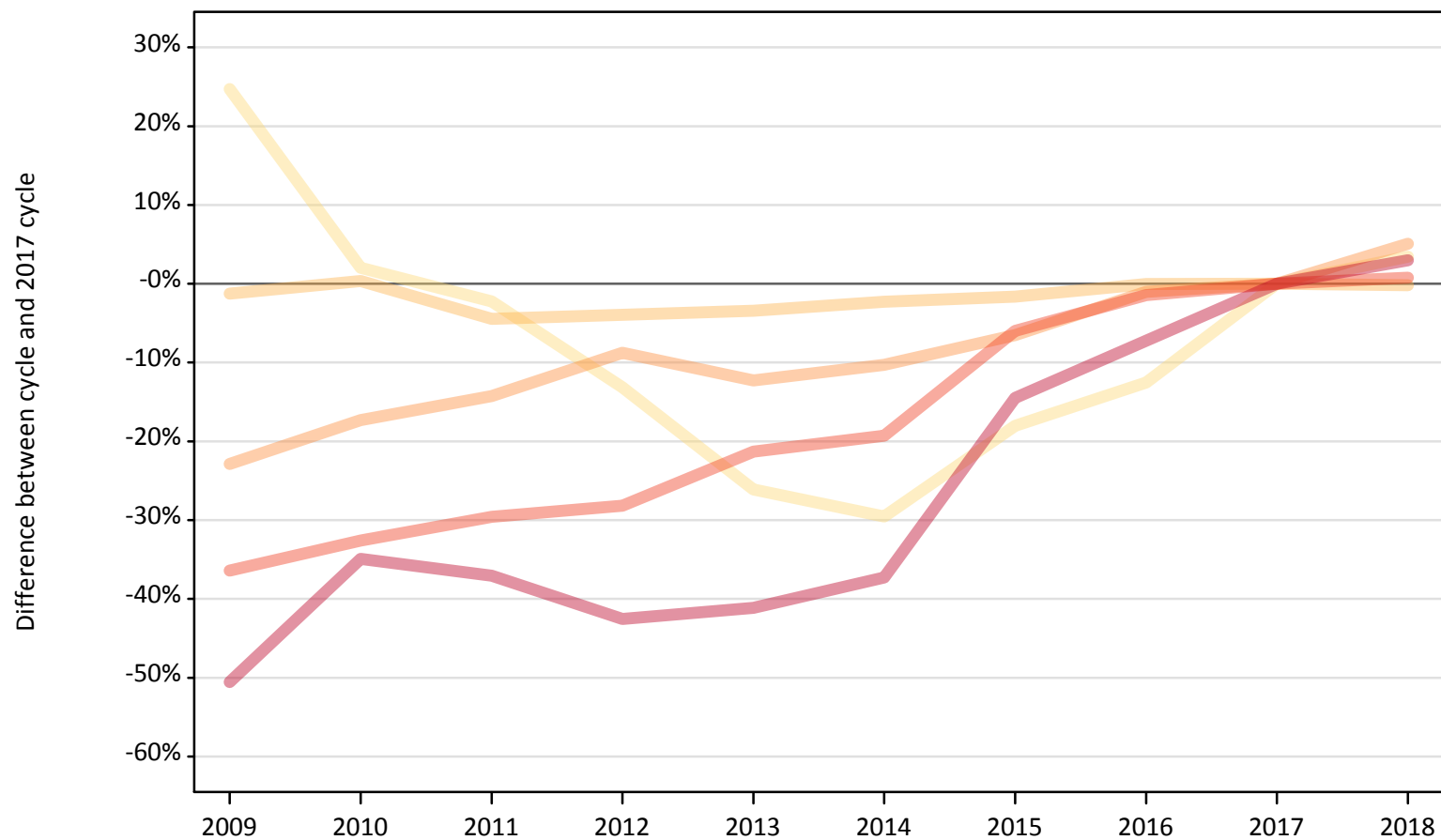
Domicile of applicant	Age group	2009	2010	2011	2012	2013	2014	2015	2016	2017	2018
Northern Ireland	17 and under	189%	117%	106%	133%	22%	11%	0%	72%	0%	39%
	18	10%	4%	1%	-3%	3%	0%	-1%	1%	0%	-4%
	19	-35%	-26%	-13%	-25%	-10%	-8%	-10%	9%	0%	-4%
	20 to 24	-27%	-21%	-18%	-18%	-3%	2%	-4%	2%	0%	0%
	25 and over	-22%	2%	0%	-16%	5%	12%	10%	15%	0%	1%

Note: The percentage change is not recorded in the above table for groups with fewer than 10 placed applicants in that cycle or in the 2017 cycle.

### C.9 Placed applicants from Scotland by age group at 13 days after A level results day

Selected age groups: difference between cycle and 2017 cycle

- 17 and under
- 18
- 19
- 20 to 24
- 25 and over



Note: The percentage change is not plotted in the above chart for groups with fewer than 30 placed applicants in any one cycle.

### C.10 Placed applicants from Scotland by age group at 13 days after A level results day

All age groups

Domicile of applicant	Age group	2009	2010	2011	2012	2013	2014	2015	2016	2017	2018
Scotland	17 and under	620	500	480	430	370	350	410	430	490	510
	18	14,460	14,690	13,990	14,060	14,140	14,310	14,400	14,640	14,640	14,610
	19	3,350	3,590	3,720	3,960	3,810	3,900	4,060	4,300	4,340	4,560
	20 to 24	5,230	5,540	5,780	5,900	6,470	6,630	7,720	8,100	8,210	8,280
	25 and over	3,170	4,160	4,030	3,680	3,770	4,010	5,470	5,940	6,400	6,590

### C.11 Placed applicants from Scotland by age group at 13 days after A level results day

Selected age groups: difference between cycle and 2017 cycle

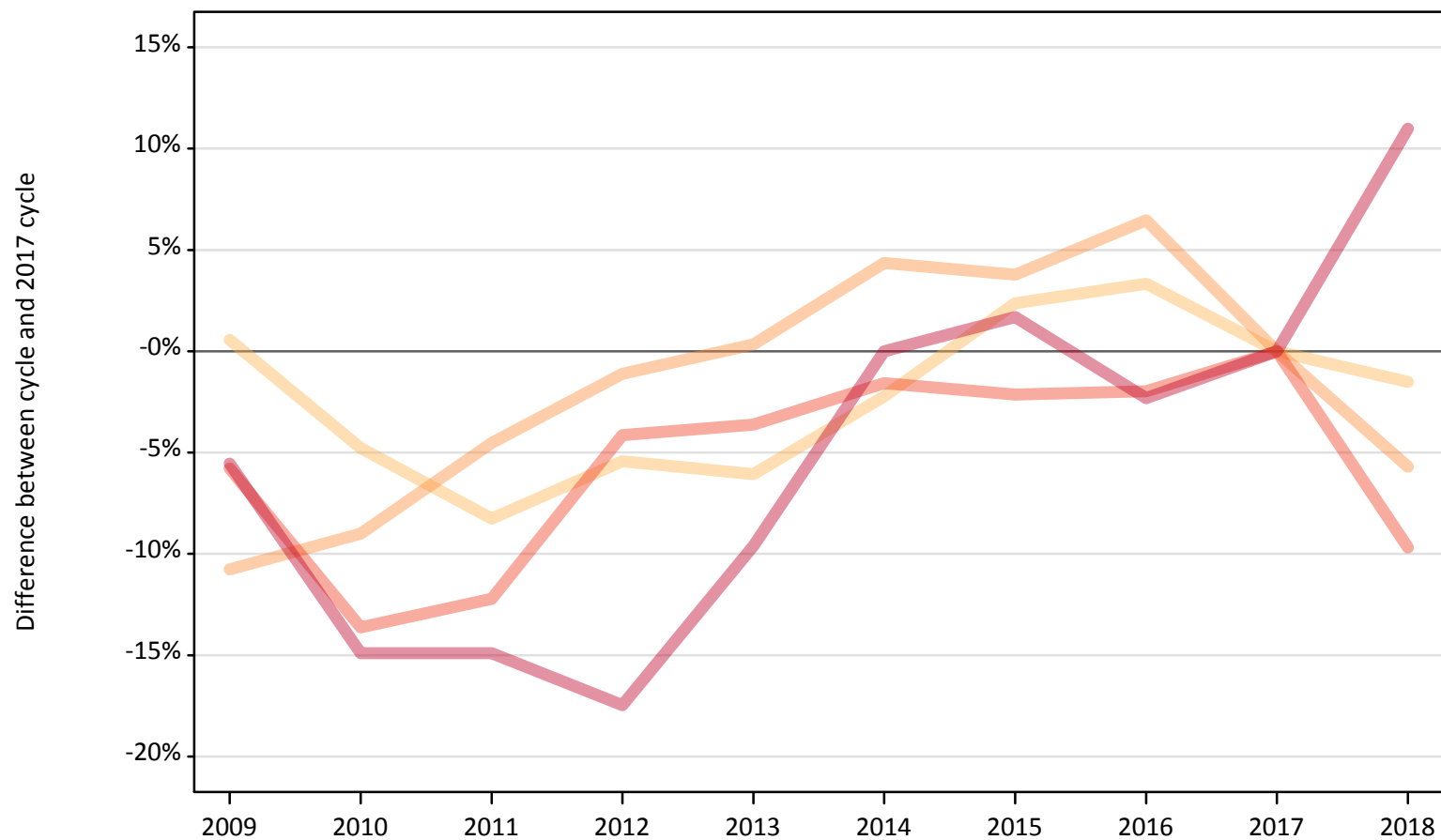
Domicile of applicant	Age group	2009	2010	2011	2012	2013	2014	2015	2016	2017	2018
Scotland	17 and under	25%	2%	-2%	-13%	-26%	-30%	-18%	-13%	0%	3%
	18	-1%	0%	-4%	-4%	-3%	-2%	-2%	-0%	0%	-0%
	19	-23%	-17%	-14%	-9%	-12%	-10%	-7%	-1%	0%	5%
	20 to 24	-36%	-33%	-30%	-28%	-21%	-19%	-6%	-1%	0%	1%
	25 and over	-51%	-35%	-37%	-43%	-41%	-37%	-14%	-7%	0%	3%

Note: The percentage change is not recorded in the above table for groups with fewer than 10 placed applicants in that cycle or in the 2017 cycle.

### C.12 Placed applicants from Wales by age group at 13 days after A level results day

Selected age groups: difference between cycle and 2017 cycle

- 17 and under
- 18
- 19
- 20 to 24
- 25 and over



Note: The percentage change is not plotted in the above chart for groups with fewer than 30 placed applicants in any one cycle.



### C.13 Placed applicants from Wales by age group at 13 days after A level results day

All age groups

Domicile of applicant	Age group	2009	2010	2011	2012	2013	2014	2015	2016	2017	2018
Wales	17 and under	50	30	30	20	30	20	20	20	20	30
	18	10,310	9,760	9,410	9,700	9,630	10,030	10,500	10,600	10,250	10,100
	19	3,130	3,200	3,350	3,470	3,520	3,670	3,650	3,740	3,510	3,310
	20 to 24	2,870	2,630	2,670	2,920	2,940	3,000	2,980	2,990	3,050	2,750
	25 and over	1,840	1,660	1,660	1,610	1,760	1,950	1,980	1,900	1,950	2,160

### C.14 Placed applicants from Wales by age group at 13 days after A level results day

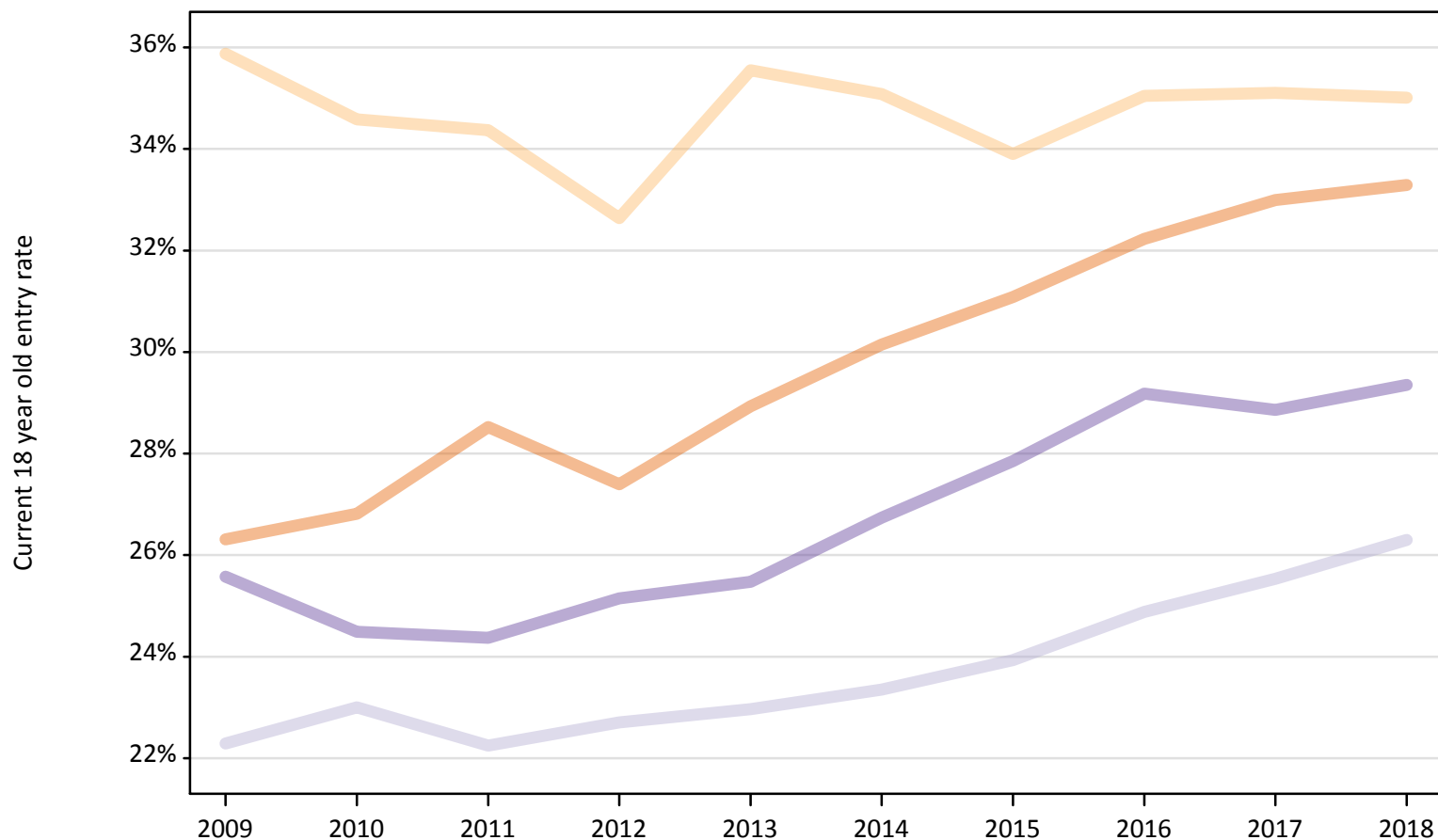
Selected age groups: difference between cycle and 2017 cycle

Domicile of applicant	Age group	2009	2010	2011	2012	2013	2014	2015	2016	2017	2018
Wales	17 and under	181%	113%	106%	31%	88%	38%	13%	50%	0%	56%
	18	1%	-5%	-8%	-5%	-6%	-2%	2%	3%	0%	-2%
	19	-11%	-9%	-5%	-1%	0%	4%	4%	6%	0%	-6%
	20 to 24	-6%	-14%	-12%	-4%	-4%	-2%	-2%	-2%	0%	-10%
	25 and over	-6%	-15%	-15%	-17%	-10%	0%	2%	-2%	0%	11%

Note: The percentage change is not recorded in the above table for groups with fewer than 10 placed applicants in that cycle or in the 2017 cycle.

### C.15 Entry rates for 18 year olds by UK country of domicile: 13 days after A level results day

Placed 18 year old applicants as a proportion of the 18 year old population



### C.16 Entry rates for 18 year olds by UK country of domicile: 13 days after A level results day

Placed 18 year old applicants as a proportion of the 18 year old population

Domicile of applicant	Age group	2009	2010	2011	2012	2013	2014	2015	2016	2017	2018
England	18	26.3%	26.8%	28.5%	27.4%	28.9%	30.1%	31.1%	32.2%	33.0%	33.3%
Northern Ireland	18	35.9%	34.6%	34.4%	32.6%	35.6%	35.1%	33.9%	35.0%	35.1%	35.0%
Scotland	18	22.3%	23.0%	22.3%	22.7%	23.0%	23.3%	23.9%	24.9%	25.5%	26.3%
Wales	18	25.6%	24.5%	24.4%	25.2%	25.5%	26.7%	27.9%	29.2%	28.9%	29.4%