

Daily Clearing Analysis: Age

B7 Nursing analysis at 00:05 on Thursday 16 August 2018 (A level results day)

CB.1 Placed applicants to nursing by country of domicile and age group, 2018 cycle (A level results day)

Domicile of applicant	Age group				
	17 and under	18	19	20 to 24	25 and over
England	0	3,720	1,860	3,640	6,260
Northern Ireland	0	310	160	230	220
Scotland	20	530	290	720	1,320
Wales	0	290	140	350	550
UK	20	4,850	2,460	4,940	8,350

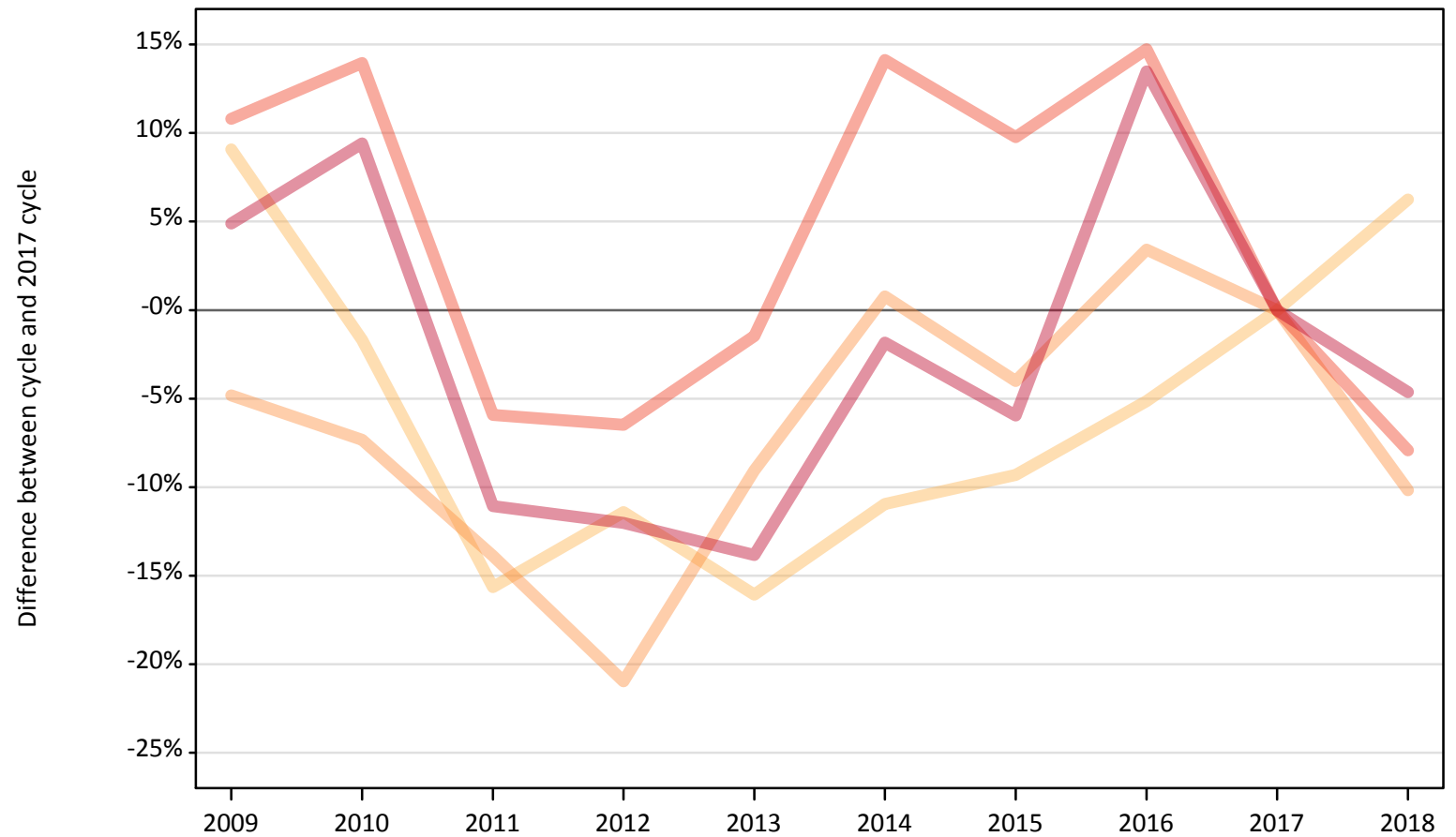
CB.2 Proportion of 18 year old population placed to nursing by country of domicile, 2018 cycle (A level results day)

Domicile of applicant	Age group	2018
England	18	0.6%
Northern Ireland	18	1.3%
Scotland	18	1.0%
Wales	18	0.8%

CB.3 Placed applicants to nursing from England by age group at A level results day

Selected age groups: difference between cycle and 2017 cycle

- 17 and under
- 18
- 19
- 20 to 24
- 25 and over



Note: The percentage change is not plotted in the above chart for groups with fewer than 30 placed applicants in any one cycle.

CB.4 Placed applicants to nursing from England by age group at A level results day

All age groups

Domicile of applicant	Age group	2009	2010	2011	2012	2013	2014	2015	2016	2017	2018
England	17 and under	140	70	20	0	0	10	0	0	10	0
	18	3,820	3,450	2,960	3,100	2,940	3,120	3,180	3,320	3,500	3,720
	19	1,980	1,920	1,790	1,640	1,890	2,090	1,990	2,150	2,080	1,860
	20 to 24	4,380	4,500	3,720	3,690	3,890	4,510	4,340	4,530	3,950	3,640
	25 and over	6,890	7,190	5,840	5,780	5,660	6,450	6,180	7,450	6,570	6,260

CB.5 Placed applicants to nursing from England by age group at A level results day

Selected age groups: difference between cycle and 2017 cycle

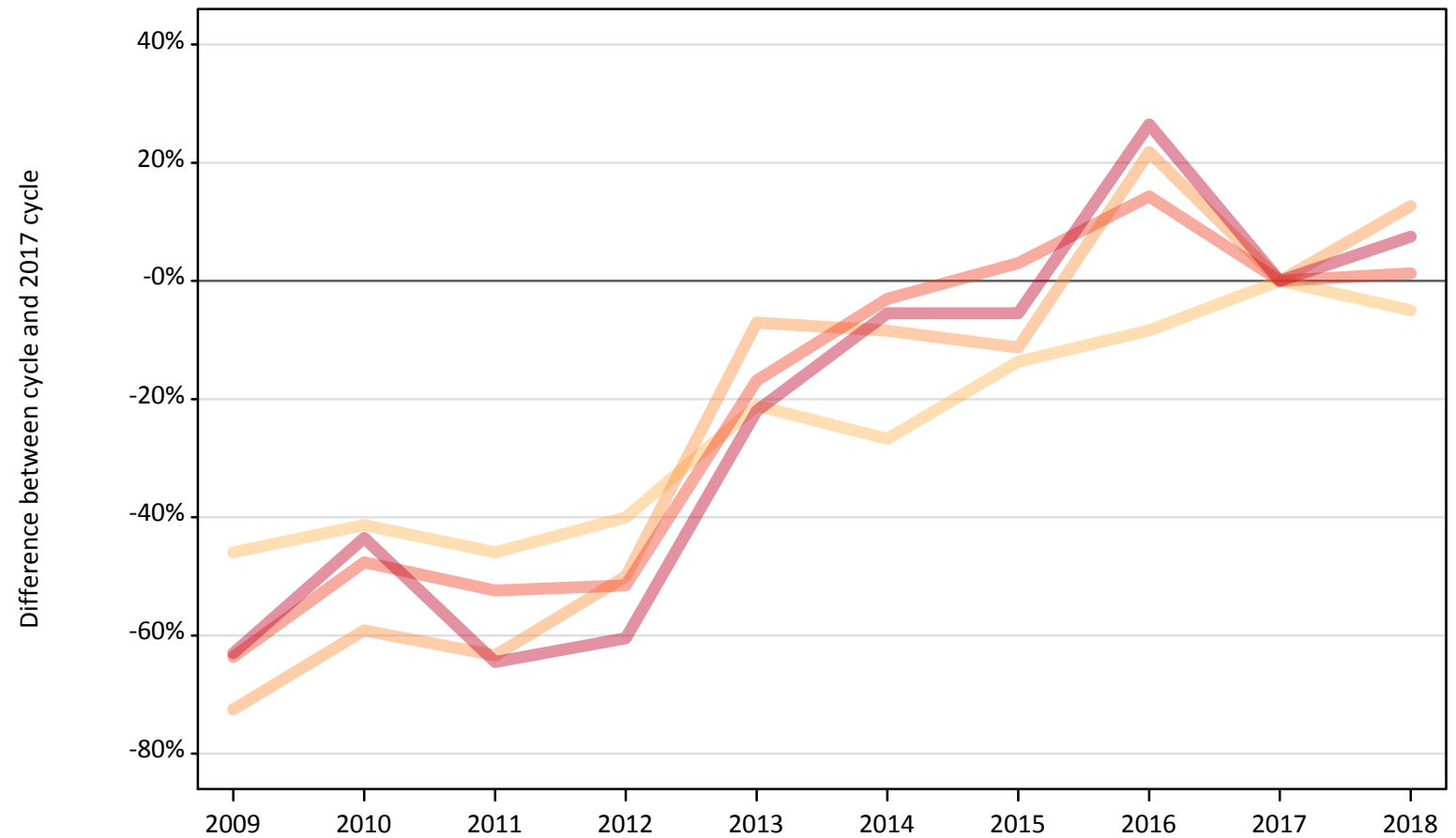
Domicile of applicant	Age group	2009	2010	2011	2012	2013	2014	2015	2016	2017	2018
England	17 and under	2267%	1083%	300%			-17%			0%	
	18	9%	-2%	-16%	-11%	-16%	-11%	-9%	-5%	0%	6%
	19	-5%	-7%	-14%	-21%	-9%	1%	-4%	3%	0%	-10%
	20 to 24	11%	14%	-6%	-6%	-1%	14%	10%	15%	0%	-8%
	25 and over	5%	9%	-11%	-12%	-14%	-2%	-6%	13%	0%	-5%

Note: The percentage change is not recorded in the above table for groups with fewer than 10 placed applicants in that cycle or in the 2017 cycle.

CB.6 Placed applicants to nursing from Northern Ireland by age group at A level results day

Selected age groups: difference between cycle and 2017 cycle

- 17 and under
- 18
- 19
- 20 to 24
- 25 and over



Note: The percentage change is not plotted in the above chart for groups with fewer than 30 placed applicants in any one cycle.

CB.7 Placed applicants to nursing from Northern Ireland by age group at A level results day

All age groups

Domicile of applicant	Age group	2009	2010	2011	2012	2013	2014	2015	2016	2017	2018
Northern Ireland	17 and under	0	0	0	0	0	0	0	0	0	0
	18	170	190	170	190	250	240	280	300	320	310
	19	40	60	50	70	130	130	130	170	140	160
	20 to 24	80	120	110	110	190	220	240	260	230	230
	25 and over	70	110	70	80	160	190	190	250	200	220

CB.8 Placed applicants to nursing from Northern Ireland by age group at A level results day

Selected age groups: difference between cycle and 2017 cycle

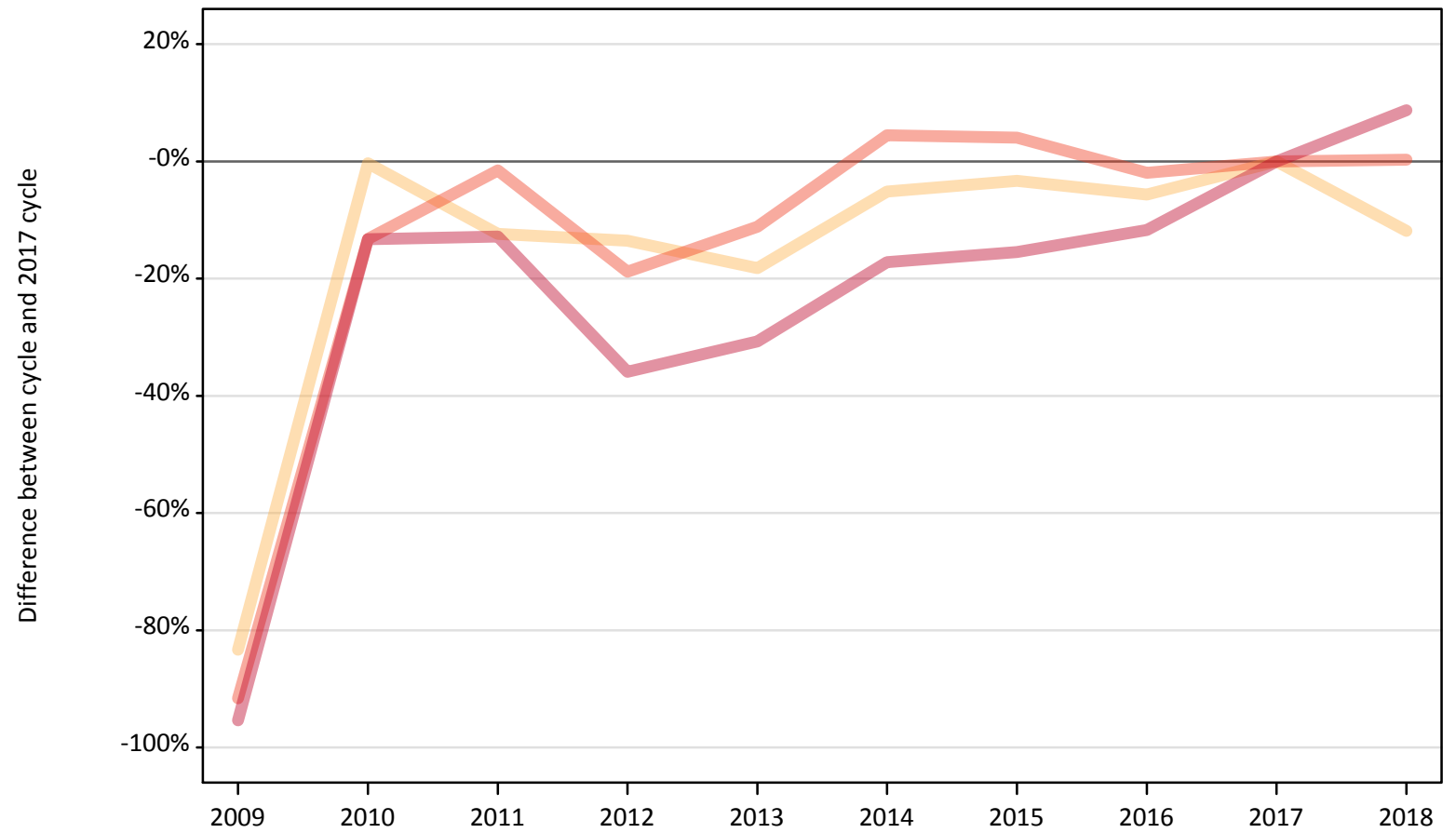
Domicile of applicant	Age group	2009	2010	2011	2012	2013	2014	2015	2016	2017	2018
Northern Ireland	17 and under										
	18	-46%	-41%	-46%	-40%	-21%	-27%	-14%	-8%	0%	-5%
	19	-73%	-59%	-63%	-50%	-7%	-8%	-11%	22%	0%	13%
	20 to 24	-64%	-48%	-52%	-52%	-17%	-3%	3%	14%	0%	1%
	25 and over	-63%	-44%	-65%	-61%	-22%	-6%	-6%	27%	0%	8%

Note: The percentage change is not recorded in the above table for groups with fewer than 10 placed applicants in that cycle or in the 2017 cycle.

CB.9 Placed applicants to nursing from Scotland by age group at A level results day

Selected age groups: difference between cycle and 2017 cycle

- 17 and under
- 18
- 19
- 20 to 24
- 25 and over



Note: The percentage change is not plotted in the above chart for groups with fewer than 30 placed applicants in any one cycle.

CB.10 Placed applicants to nursing from Scotland by age group at A level results day

All age groups

Domicile of applicant	Age group	2009	2010	2011	2012	2013	2014	2015	2016	2017	2018
Scotland	17 and under	0	40	20	20	20	20	10	20	20	20
	18	100	600	530	520	490	570	580	570	600	530
	19	30	260	270	260	280	310	290	310	280	290
	20 to 24	60	620	710	580	640	750	750	700	720	720
	25 and over	60	1,050	1,060	780	840	1,010	1,030	1,070	1,210	1,320

CB.11 Placed applicants to nursing from Scotland by age group at A level results day

Selected age groups: difference between cycle and 2017 cycle

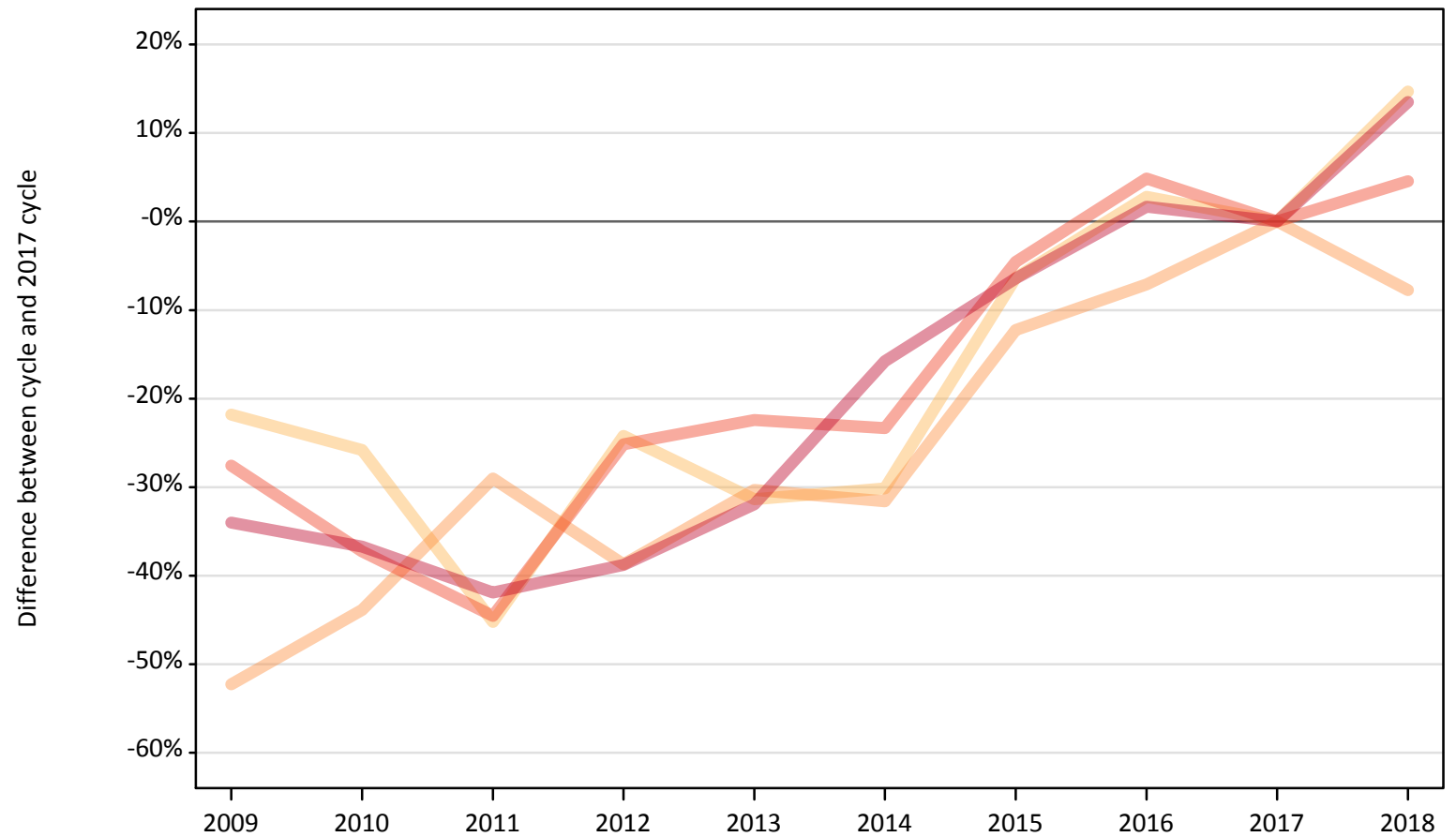
Domicile of applicant	Age group	2009	2010	2011	2012	2013	2014	2015	2016	2017	2018
Scotland	17 and under		95%	16%	5%	-5%	-11%	-37%	-16%	0%	-21%
	18	-83%	-0%	-12%	-14%	-18%	-5%	-3%	-6%	0%	-12%
	19	-91%	-4%	-2%	-4%	1%	12%	7%	12%	0%	5%
	20 to 24	-92%	-13%	-2%	-19%	-11%	4%	4%	-2%	0%	0%
	25 and over	-95%	-13%	-13%	-36%	-31%	-17%	-15%	-12%	0%	9%

Note: The percentage change is not recorded in the above table for groups with fewer than 10 placed applicants in that cycle or in the 2017 cycle.

CB.12 Placed applicants to nursing from Wales by age group at A level results day

Selected age groups: difference between cycle and 2017 cycle

- 17 and under
- 18
- 19
- 20 to 24
- 25 and over



Note: The percentage change is not plotted in the above chart for groups with fewer than 30 placed applicants in any one cycle.

CB.13 Placed applicants to nursing from Wales by age group at A level results day

All age groups

Domicile of applicant	Age group	2009	2010	2011	2012	2013	2014	2015	2016	2017	2018
Wales	17 and under	0	0	0	0	0	0	0	0	0	0
	18	200	190	140	190	170	180	240	260	250	290
	19	70	90	110	100	110	110	140	140	160	140
	20 to 24	240	210	180	250	260	250	320	350	330	350
	25 and over	320	310	280	300	330	410	450	490	480	550

CB.14 Placed applicants to nursing from Wales by age group at A level results day

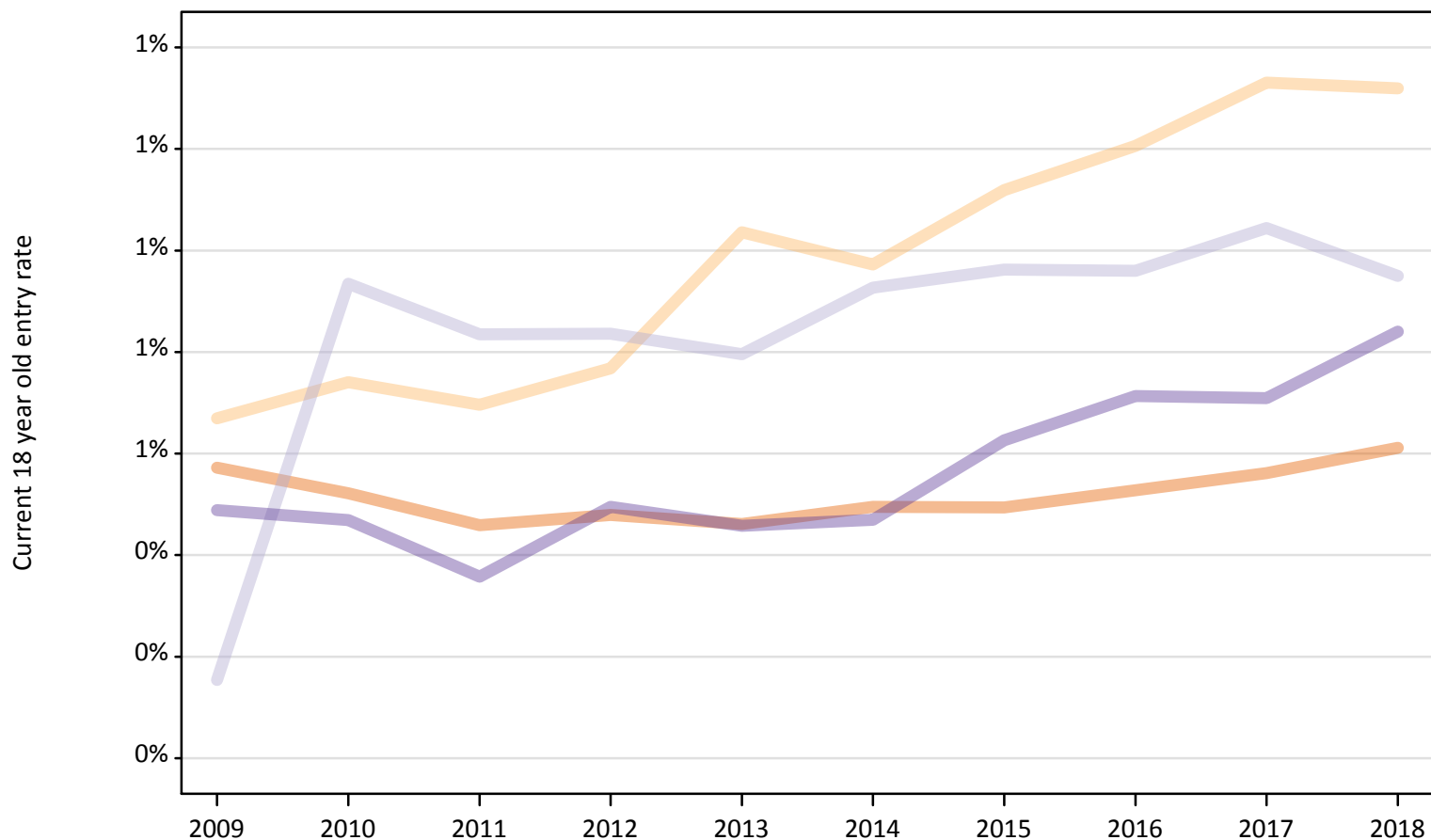
Selected age groups: difference between cycle and 2017 cycle

Domicile of applicant	Age group	2009	2010	2011	2012	2013	2014	2015	2016	2017	2018
Wales	17 and under										
	18	-22%	-26%	-45%	-24%	-31%	-30%	-6%	3%	0%	15%
	19	-52%	-44%	-29%	-39%	-30%	-32%	-12%	-7%	0%	-8%
	20 to 24	-28%	-37%	-45%	-25%	-22%	-23%	-5%	5%	0%	5%
	25 and over	-34%	-37%	-42%	-39%	-32%	-16%	-6%	2%	0%	13%

Note: The percentage change is not recorded in the above table for groups with fewer than 10 placed applicants in that cycle or in the 2017 cycle.

CB.15 Entry rates to nursing for 18 year olds by UK country of domicile: A level results day

Placed 18 year old applicants as a proportion of the 18 year old population



CB.16 Entry rates to nursing for 18 year olds by UK country of domicile: A level results day

Placed 18 year old applicants as a proportion of the 18 year old population

Domicile of applicant	Age group	2009	2010	2011	2012	2013	2014	2015	2016	2017	2018
England	18	0.6%	0.5%	0.5%	0.5%	0.5%	0.5%	0.5%	0.5%	0.6%	0.6%
Northern Ireland	18	0.7%	0.7%	0.7%	0.8%	1.0%	1.0%	1.1%	1.2%	1.3%	1.3%
Scotland	18	0.2%	0.9%	0.8%	0.8%	0.8%	0.9%	1.0%	1.0%	1.0%	1.0%
Wales	18	0.5%	0.5%	0.4%	0.5%	0.5%	0.5%	0.6%	0.7%	0.7%	0.8%