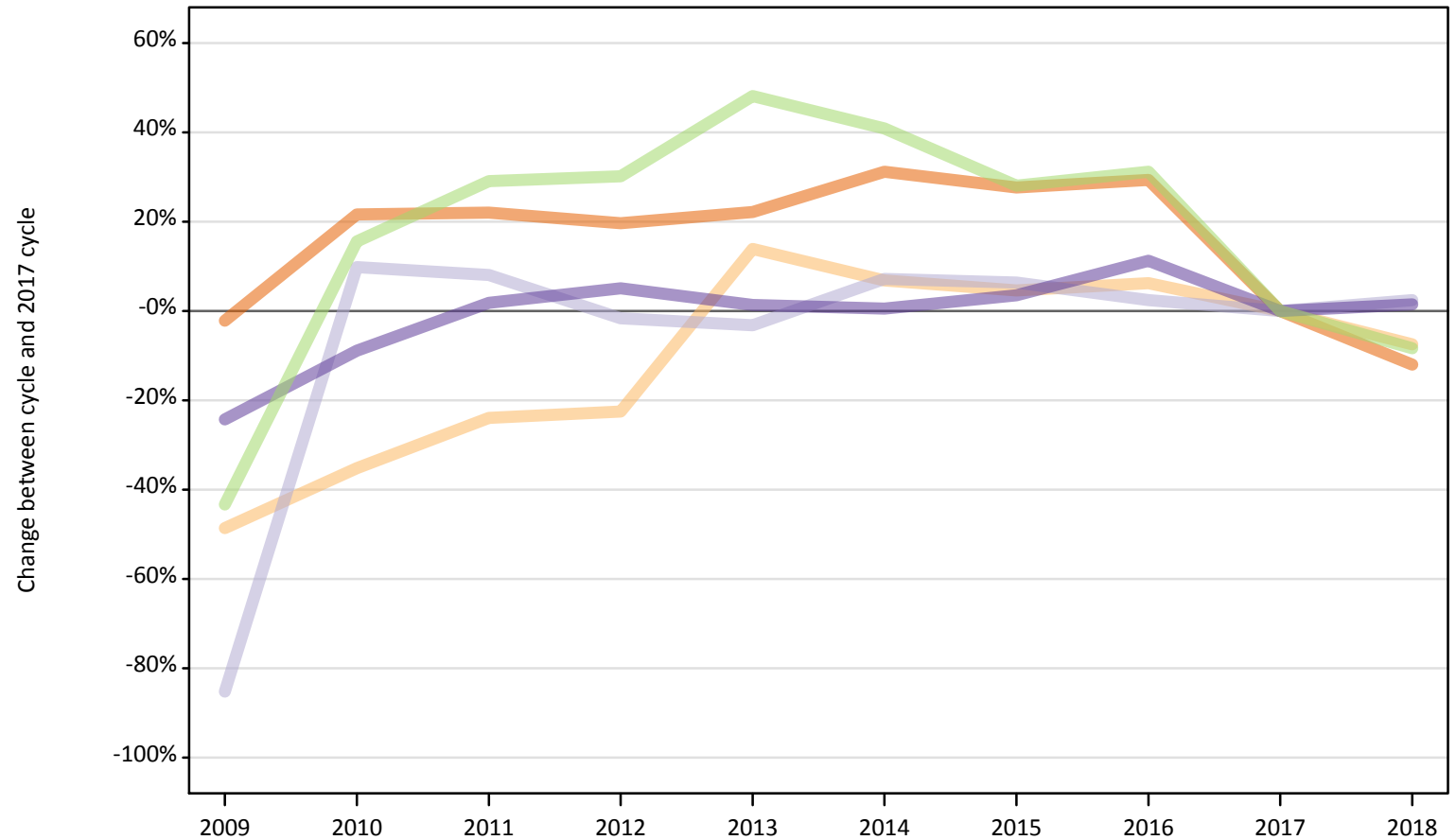


# June Deadline Analysis: Overview

## Nursing applicants at the 30 June deadline

### IB.1 Nursing applicants by domicile group Difference between cycle and 2017 cycle

- England
- Northern Ireland
- Scotland
- Wales
- EU (excluding UK)
- Not EU



Note: The percentage change is not plotted in the above chart for groups with fewer than 500 applicants in any one cycle.

## IB.2 Nursing applicants by domicile group

Domicile of applicant	2009	2010	2011	2012	2013	2014	2015	2016	2017	2018
England	39,190	48,720	48,890	47,950	48,940	52,550	51,160	51,840	40,060	35,260
Northern Ireland	1,330	1,680	1,970	2,010	2,950	2,770	2,710	2,750	2,590	2,400
Scotland	810	6,000	5,910	5,380	5,290	5,860	5,820	5,600	5,470	5,600
Wales	2,220	2,680	2,990	3,090	2,980	2,950	3,040	3,270	2,940	2,980
UK	43,560	59,080	59,760	58,410	60,150	64,130	62,720	63,450	51,050	46,240
EU (excluding UK)	730	1,490	1,660	1,680	1,910	1,810	1,650	1,690	1,290	1,180
Not EU	640	620	600	500	490	550	580	480	670	750
All domiciles	44,920	61,180	62,020	60,590	62,550	66,490	64,950	65,620	53,010	48,170

## IB.3 Nursing applicants by domicile group

Difference between cycle and 2017 cycle

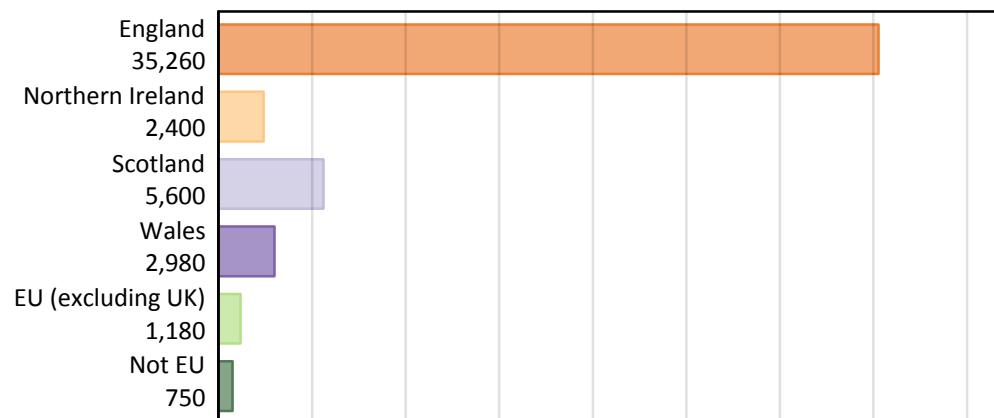
Domicile of applicant	2009	2010	2011	2012	2013	2014	2015	2016	2017	2018
England	-2%	22%	22%	20%	22%	31%	28%	29%	0%	-12%
Northern Ireland	-49%	-35%	-24%	-22%	14%	7%	5%	6%	0%	-7%
Scotland	-85%	10%	8%	-2%	-3%	7%	6%	2%	0%	2%
Wales	-24%	-9%	2%	5%	1%	1%	4%	11%	0%	1%
UK	-15%	16%	17%	14%	18%	26%	23%	24%	0%	-9%
EU (excluding UK)	-43%	16%	29%	30%	48%	41%	28%	31%	0%	-8%
Not EU	-4%	-8%	-10%	-24%	-27%	-18%	-13%	-27%	0%	13%
All domiciles	-15%	15%	17%	14%	18%	25%	23%	24%	0%	-9%

Note: The percentage change is not recorded in the above table for groups with fewer than 10 applicants in that cycle or in the 2017 cycle.

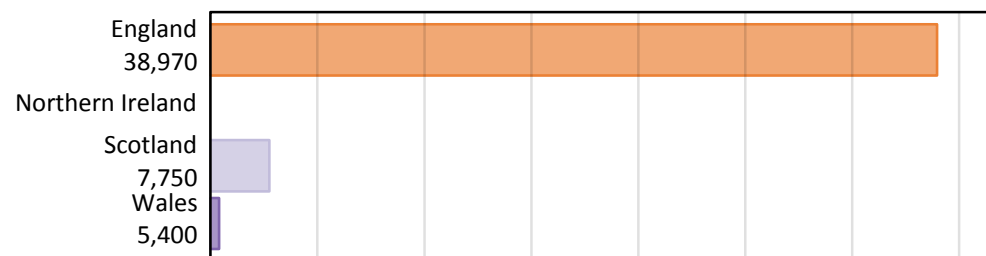
#### IB.4 Nursing applicants by country of domicile and provider, 2018 cycle

Domicile of applicant	Country of provider				
	England	Northern Ireland	Scotland	Wales	UK
England	35,090		730	2,330	35,260
Northern Ireland	920		620	60	2,400
Scotland	130		5,570	20	5,600
Wales	1,390		20	2,820	2,980
UK	37,520		6,930	5,230	46,240
EU (excluding UK)	760		680	120	1,180
Not EU	690		140	60	750
All domiciles	38,970		7,750	5,400	48,170

#### IB.5 Nursing applicants by domicile group, 2018 cycle



#### IB.6 Nursing applicants by country of provider, 2018 cycle



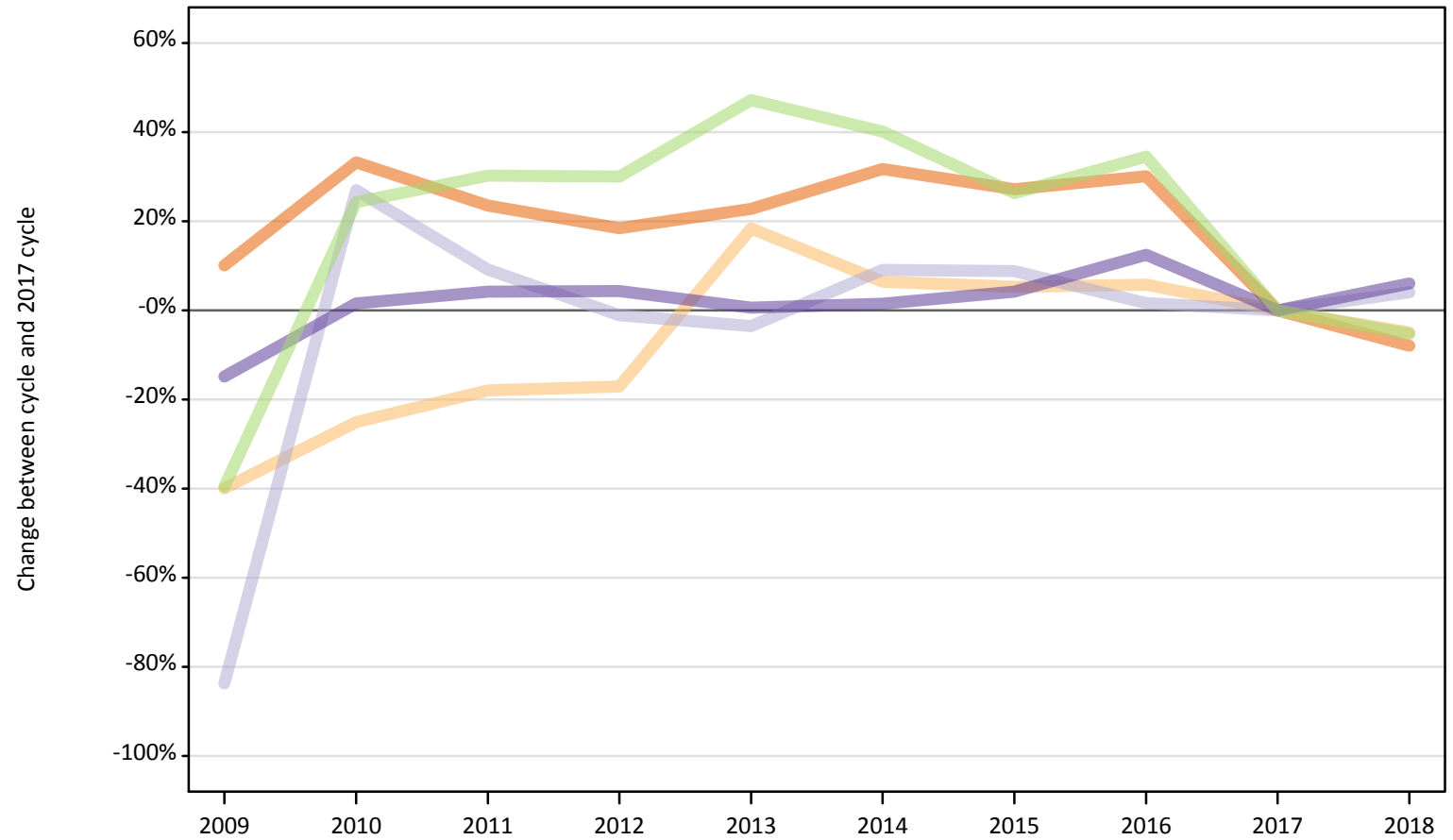
## IB.7 Nursing applicants by country of domicile and provider

Domicile of applicant	Country of Provider	2009	2010	2011	2012	2013	2014	2015	2016	2017	2018
England	England	39,080	48,550	48,760	47,820	48,790	52,410	51,040	51,730	39,930	35,090
	Northern Ireland										
	Scotland	300	740	800	850	990	1,050	1,040	1,000	800	730
	Wales	1,550	2,040	2,560	2,630	2,800	2,800	2,750	2,730	2,440	2,330
	UK	39,190	48,720	48,890	47,950	48,940	52,550	51,160	51,840	40,060	35,260
Northern Ireland	England	630	720	970	1,090	1,060	1,080	1,060	1,140	980	920
	Northern Ireland										
	Scotland	240	440	610	700	760	760	740	760	760	620
	Wales	50	80	90	110	80	60	70	90	90	60
	UK	1,330	1,680	1,970	2,010	2,950	2,770	2,710	2,750	2,590	2,400
Scotland	England	110	220	230	260	250	240	220	260	160	130
	Northern Ireland										
	Scotland	730	5,960	5,870	5,320	5,250	5,810	5,780	5,550	5,440	5,570
	Wales	10	20	10	20	20	20	20	20	10	20
	UK	810	6,000	5,910	5,380	5,290	5,860	5,820	5,600	5,470	5,600
Wales	England	830	1,060	1,320	1,570	1,620	1,780	1,840	1,810	1,550	1,390
	Northern Ireland										
	Scotland	10	20	30	30	30	40	20	30	30	20
	Wales	2,040	2,430	2,790	2,860	2,760	2,600	2,720	2,950	2,710	2,820
	UK	2,220	2,680	2,990	3,090	2,980	2,950	3,040	3,270	2,940	2,980

Domicile of applicant	Country of Provider	2009	2010	2011	2012	2013	2014	2015	2016	2017	2018
UK	England	40,640	50,560	51,280	50,740	51,710	55,510	54,160	54,940	42,620	37,520
	Northern Ireland										
	Scotland	1,280	7,150	7,300	6,890	7,030	7,660	7,570	7,330	7,030	6,930
	Wales	3,640	4,570	5,450	5,610	5,650	5,480	5,560	5,790	5,250	5,230
	UK	43,560	59,080	59,760	58,410	60,150	64,130	62,720	63,450	51,050	46,240
EU (excluding UK)	England	610	1,180	1,340	1,340	1,490	1,450	1,360	1,430	940	760
	Northern Ireland										
	Scotland	200	650	760	760	820	800	640	660	680	680
	Wales	150	250	310	180	290	190	190	180	140	120
	UK	730	1,490	1,660	1,680	1,910	1,810	1,650	1,690	1,290	1,180
Not EU	England	600	550	520	440	430	470	500	420	600	690
	Northern Ireland										
	Scotland	50	110	130	100	100	140	150	110	120	140
	Wales	50	40	70	50	50	70	80	50	80	60
	UK	640	620	600	500	490	550	580	480	670	750
All domiciles	England	41,850	52,290	53,150	52,520	53,630	57,420	56,010	56,790	44,160	38,970
	Northern Ireland										
	Scotland	1,530	7,910	8,200	7,750	7,950	8,590	8,370	8,100	7,820	7,750
	Wales	3,840	4,860	5,840	5,840	5,990	5,730	5,830	6,010	5,460	5,400
	UK	44,920	61,180	62,020	60,590	62,550	66,490	64,950	65,620	53,010	48,170

**IB.8 Nursing first-time applicants by domicile group**  
Difference between cycle and 2017 cycle

- England
- Northern Ireland
- Scotland
- Wales
- EU (excluding UK)
- Not EU



Note: The percentage change is not plotted in the above chart for groups with fewer than 500 applicants in any one cycle.

### IB.9 Nursing first-time applicants by country of domicile

Domicile of applicant	2009	2010	2011	2012	2013	2014	2015	2016	2017	2018
England	35,530	42,990	39,860	38,230	39,630	42,510	41,060	42,000	32,280	29,730
Northern Ireland	1,230	1,530	1,680	1,700	2,420	2,180	2,150	2,160	2,050	1,940
Scotland	740	5,720	4,920	4,460	4,340	4,910	4,900	4,580	4,500	4,690
Wales	2,040	2,440	2,500	2,500	2,410	2,440	2,500	2,700	2,400	2,550
UK	39,540	52,680	48,960	46,880	48,810	52,040	50,620	51,440	41,230	38,900
EU (excluding UK)	680	1,390	1,460	1,460	1,650	1,570	1,420	1,510	1,120	1,060
Not EU	600	570	540	460	450	490	520	440	610	710
All domiciles	40,810	54,640	50,960	48,800	50,910	54,100	52,560	53,380	42,960	40,670

### IB.10 Nursing first-time applicants by country of domicile

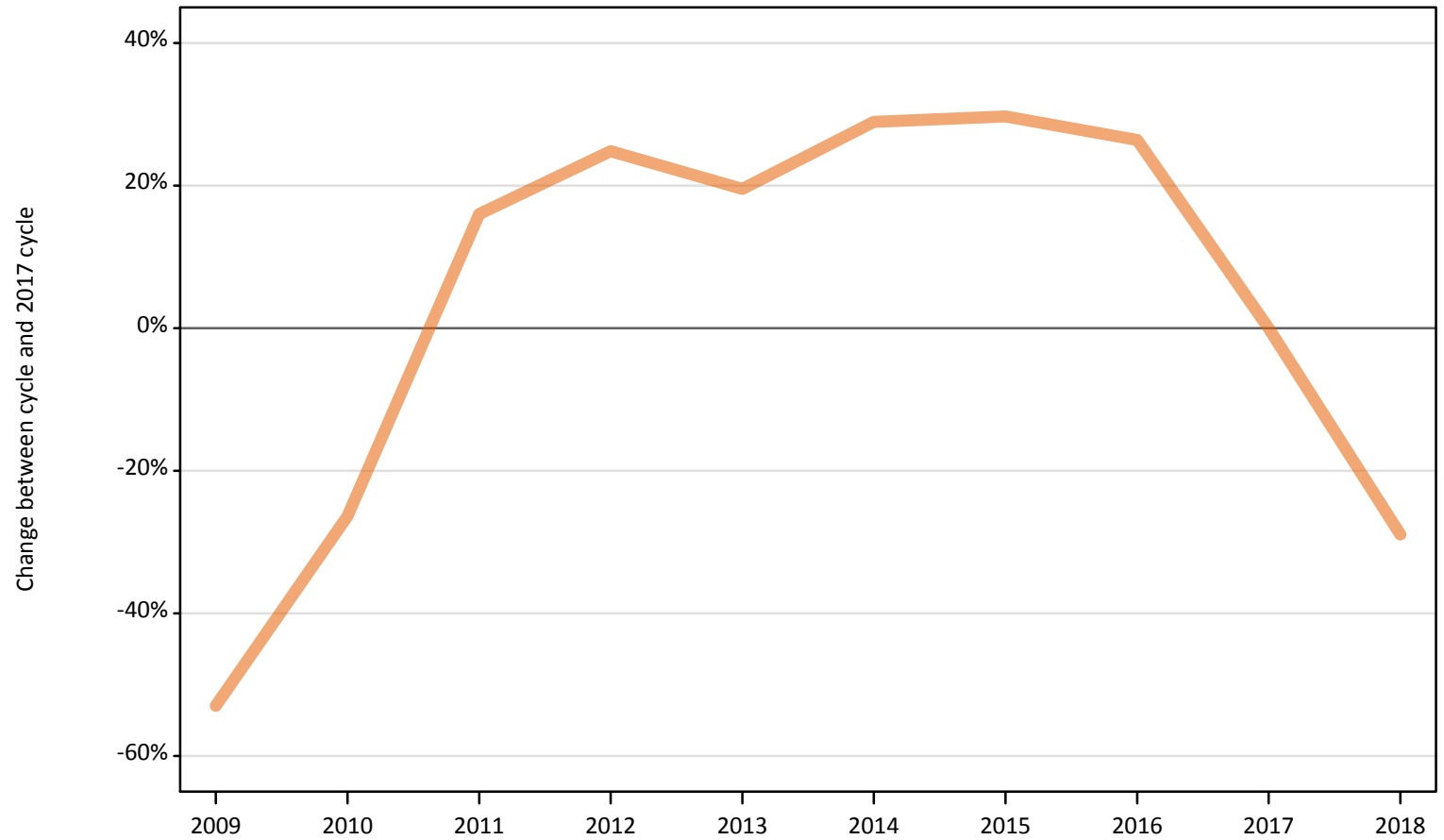
Difference between cycle and 2017 cycle

Domicile of applicant	2009	2010	2011	2012	2013	2014	2015	2016	2017	2018
England	10%	33%	23%	18%	23%	32%	27%	30%	0%	-8%
Northern Ireland	-40%	-25%	-18%	-17%	18%	6%	5%	6%	0%	-5%
Scotland	-84%	27%	9%	-1%	-4%	9%	9%	2%	0%	4%
Wales	-15%	2%	4%	4%	1%	1%	4%	13%	0%	6%
UK	-4%	28%	19%	14%	18%	26%	23%	25%	0%	-6%
EU (excluding UK)	-40%	24%	30%	30%	47%	40%	26%	34%	0%	-5%
Not EU	-3%	-8%	-13%	-26%	-28%	-20%	-15%	-29%	0%	15%
All domiciles	-5%	27%	19%	14%	18%	26%	22%	24%	0%	-5%

Note: The percentage change is not recorded in the above table for groups with fewer than 10 applicants in that cycle or in the 2017 cycle.

**IB.11 Nursing reapplicants by domicile group**  
Difference between cycle and 2017 cycle

- England
- Northern Ireland
- Scotland
- Wales
- EU (excluding UK)
- Not EU



Note: The percentage change is not plotted in the above chart for groups with fewer than 500 applicants in any one cycle.



## IB.12 Nursing reapplicants by country of domicile

Domicile of applicant	2009	2010	2011	2012	2013	2014	2015	2016	2017	2018
England	3,660	5,730	9,030	9,720	9,310	10,040	10,100	9,840	7,790	5,530
Northern Ireland	100	150	290	310	530	590	560	590	540	450
Scotland	80	280	990	920	950	950	910	1,020	960	910
Wales	180	240	490	580	560	520	540	570	540	430
UK	4,020	6,400	10,800	11,530	11,340	12,090	12,110	12,020	9,830	7,330
EU (excluding UK)	50	90	200	220	260	240	230	180	170	120
Not EU	40	50	60	50	40	60	60	50	50	50
All domiciles	4,110	6,550	11,070	11,800	11,640	12,390	12,400	12,240	10,040	7,500

## IB.13 Nursing reapplicants by country of domicile

Difference between cycle and 2017 cycle

Domicile of applicant	2009	2010	2011	2012	2013	2014	2015	2016	2017	2018
England	-53%	-26%	16%	25%	20%	29%	30%	26%	0%	-29%
Northern Ireland	-81%	-73%	-46%	-43%	-3%	9%	2%	8%	0%	-17%
Scotland	-92%	-71%	3%	-4%	-1%	-2%	-5%	7%	0%	-5%
Wales	-66%	-56%	-9%	8%	5%	-4%	1%	6%	0%	-19%
UK	-59%	-35%	10%	17%	15%	23%	23%	22%	0%	-25%
EU (excluding UK)	-68%	-43%	21%	31%	55%	46%	40%	8%	0%	-29%
Not EU	-19%	-4%	21%	-8%	-15%	12%	13%	-6%	0%	-12%
All domiciles	-59%	-35%	10%	17%	16%	23%	23%	22%	0%	-25%

Note: The percentage change is not recorded in the above table for groups with fewer than 10 applicants in that cycle or in the 2017 cycle.

**IB.14 Nursing applicants by country of domicile and age group**  
 Selected age groups split by first-time applicants and reapplicants

Domicile of applicant		2009	2010	2011	2012	2013	2014	2015	2016	2017	2018
England	18	7,150	8,280	8,380	8,810	9,020	9,310	9,630	9,470	8,540	8,350
	19	4,170	4,950	5,300	4,870	5,500	5,820	5,590	5,580	4,550	4,100
	19 First-time applicant	3,280	3,700	3,410	3,090	3,550	3,850	3,700	3,660	3,140	2,840
	19 Reapplicant	900	1,240	1,890	1,770	1,950	1,970	1,890	1,930	1,410	1,260
Northern Ireland	18	740	790	890	930	990	890	900	890	890	900
	19	160	210	280	310	440	400	370	410	390	350
	19 First-time applicant	110	140	130	140	170	190	160	170	160	160
	19 Reapplicant	50	70	150	170	270	210	200	250	240	200
Scotland	18	320	1,260	1,240	1,230	1,180	1,260	1,290	1,170	1,160	1,120
	19	100	630	580	580	570	590	530	560	490	510
	19 First-time applicant	70	490	290	290	280	300	260	260	230	250
	19 Reapplicant	40	140	300	290	290	290	270	310	260	260
Wales	18	510	630	580	600	600	610	680	680	650	600
	19	220	290	360	320	310	320	320	360	330	350
	19 First-time applicant	180	220	230	190	190	200	190	210	190	240
	19 Reapplicant	50	70	140	140	120	120	130	150	150	110

### IB.15 Nursing applicants by country of domicile and age group

Difference between cycle and 2017 cycle for selected age groups split by first-time applicants and reapplicants

Domicile of applicant		2009	2010	2011	2012	2013	2014	2015	2016	2017	2018
England	18	-16%	-3%	-2%	3%	6%	9%	13%	11%	0%	-2%
	19	-8%	9%	16%	7%	21%	28%	23%	23%	0%	-10%
	19 First-time applicant	4%	18%	9%	-1%	13%	23%	18%	17%	0%	-9%
	19 Reapplicant	-37%	-12%	34%	25%	38%	39%	34%	36%	0%	-11%
Northern Ireland	18	-17%	-11%	0%	4%	11%	-1%	1%	-1%	0%	0%
	19	-60%	-46%	-29%	-22%	10%	2%	-7%	5%	0%	-10%
	19 First-time applicant	-31%	-11%	-17%	-11%	8%	22%	3%	8%	0%	0%
	19 Reapplicant	-78%	-69%	-38%	-30%	12%	-12%	-14%	3%	0%	-17%
Scotland	18	-73%	9%	8%	6%	2%	9%	11%	1%	0%	-3%
	19	-80%	29%	20%	19%	17%	21%	9%	16%	0%	4%
	19 First-time applicant	-71%	118%	28%	29%	26%	34%	16%	15%	0%	11%
	19 Reapplicant	-87%	-47%	12%	10%	9%	10%	3%	16%	0%	-2%
Wales	18	-22%	-4%	-10%	-8%	-7%	-6%	5%	6%	0%	-7%
	19	-33%	-13%	10%	-2%	-6%	-4%	-4%	9%	0%	5%
	19 First-time applicant	-5%	17%	23%	1%	3%	6%	2%	14%	0%	30%
	19 Reapplicant	-68%	-51%	-6%	-6%	-16%	-17%	-10%	3%	0%	-27%

Note: The percentage change is not recorded in the above table for groups with fewer than 10 applicants in that cycle or in the 2017 cycle.

## IB.16 Technical notes and definitions

Applicants have been able to submit applications for all 2018 courses since early September.

Applicants who submit their applications to UCAS by the January deadline are considered 'on time' applicants for the large majority of courses offered through UCAS. Some art and design courses have a later deadline of 24 March. By definition all main scheme applications have been received by the 30 June deadline.

Subject group 'B7' covers courses related to nursing. These additional tables include applicants who made at least one choice to a 'B7' course by the January deadline. The primary deadline applicant statistics, which include applicants to all courses, are available on the UCAS website.

Applicants to courses in Northern Ireland are not shown to avoid revealing outcomes for individual providers.

Counts of the number of applicants reported have been rounded to the nearest 10 applicants, this may result in instances where totals do not equal the sum of the components. Proportional changes have been rounded to the nearest whole percentage point.

In 2009, the Canary Islands classification changed from Not EU to EU (excluding UK). In order to present an accurate time series, the Canary Islands have been consistently classified as EU (excluding UK). This will result in differences with data published prior to 2010.

### Age

This statistical release uses country-specific age definitions which align with the cut off points for school/college cohorts within the different administrations of the UK. For England and Wales ages are defined on the 31 August, for Northern Ireland on the 1 July and for Scotland on the 28 February the following year. Defining ages in this way matches the assignment of children to school cohorts. For applicants outside of the UK the cohort cut off for England and Wales has been used.

### Applicant

A person who has made an application in the UCAS system during the cycle reported (including applications for deferred entry). Records of prior acceptance (RPAs) are excluded.

### Application

An application to a course at a provider made by an applicant in the UCAS main scheme. Applicants may make up to five main scheme applications.

### Country of provider

An applicant may be counted once for each provider country they have applied to in the main scheme. If an applicant has applied to providers in multiple countries then the applicant is counted once within each country of provider applied to.

### Domicile

Declared area of permanent residence. The Channel Islands and the Isle of Man have been assigned as 'Not EU'.

### Ethnic group

High level grouping of ethnic origin as declared by the applicant: 'Asian', 'Black', 'Mixed', 'White', 'Other', 'Unknown'.

### First time applicant

An applicant that did not apply to the UCAS scheme in the previous cycle.

### Main scheme

The main UCAS application scheme through which up to five providers/courses can be applied to. This opens in September and closes to new applications on 30 June the following year.

### Reapplicant

An applicant that applied to the UCAS scheme in the previous cycle.

### Sex

As declared by the applicant.

### SIMD 2016

Scottish Index of Multiple Deprivation identifies small area concentrations of multiple deprivation across all of Scotland, providing a relative measure of deprivation among small areas (data zones). In this report, the SIMD 2016 has been used to group areas in each year in the times series.

### POLAR3

Developed by HEFCE and classifies small areas across the UK into five groups, according to their level of young participation in HE. Each of these groups represents around 20 per cent of young people, and is ranked from quintile 1 (areas with the lowest young participation rates, considered as the most disadvantaged) to quintile 5 (highest young participation rates, considered most advantaged).

### POLAR4

Developed by HEFCE and classifies small areas across the UK into five groups, according to their level of young participation in HE. Each of these groups represents around 20 per cent of young people, and is ranked from quintile 1 (areas with the lowest young participation rates, considered as the most disadvantaged) to quintile 5 (highest young participation rates, considered most advantaged). POLAR4 is the most recent version of the POLAR classification, and is available for the first time in UCAS? reporting since its launch in 2017.

### Tariff Group of provider

Providers are grouped as higher, medium or lower tariff based on their average levels of attainment of their accepted applicants (summarised through UCAS Tariff points) in recent cycles. Each group of providers accounted for around a third of all UK 18 year old acceptances in recent cycles.

### Subject group

The JACS3 classification used to classify courses into subject groups.